

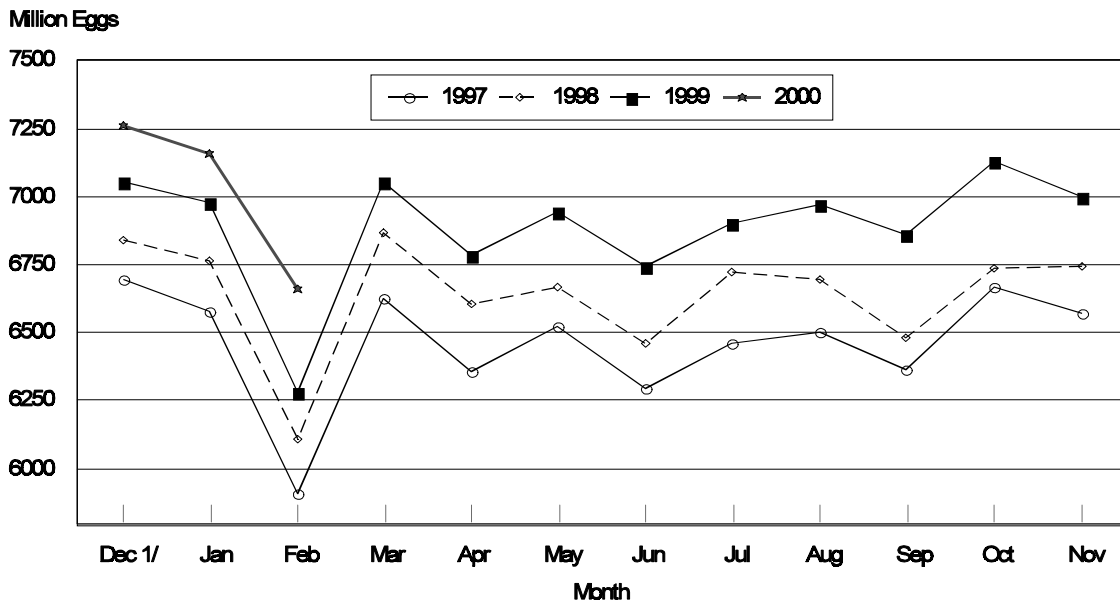
Released March 21, 2000, by the National Agricultural Statistics Service (NASS), Agricultural Statistics Board, U.S. Department of Agriculture. For information on "Chickens and Eggs" call Tom Kruchten at (202) 690-4870. For information on Hatch call Jody Roberts, office hours 7:30 a.m. to 4:00 p.m. ET.

February Egg Production Up 6 Percent

U.S. egg production totaled 6.66 billion during February 2000, up 6 percent from the 6.28 billion produced in 1999. Production included 5.63 billion table eggs and 1.03 billion hatching eggs, of which 969 million were broiler-type and 60.0 million were egg-type. The total number of layers during February 2000 averaged 330 million, up 2 percent from the total average number of layers during February 1999. February egg production per 100 layers was 2,019 eggs, up 4 percent from 1,946 eggs in February 1999.

February 2000 contained 21 weekdays, one holiday and four Saturdays, compared to 20 weekdays, one holiday and four Saturdays in 1999, as 2000 is a leap year.

All Egg Production By Months United States, 1997 - 2000



1/ Previous Year

All layers in the U.S. on March 1, 2000, totaled 331 million, up 2 percent from a year ago. The 331 million layers consisted of 271 million layers producing table or commercial type eggs, 56.8 million layers producing broiler-type hatching eggs, and 2.71 million layers producing egg-type hatching eggs. Rate of lay per day on March 1, 2000, averaged 69.5 eggs per 100 layers, down slightly from the 69.6 a year ago.

Laying flocks in the 30 major egg producing States produced 6.26 billion eggs during February, up 5 percent from February 1999. The average number of layers during February, at 310 million, was up 2 percent from a year earlier.

Individual State estimates are available for the 30 major egg producing States. These States are listed on page 8 of this release and account for approximately 94 percent of the total U.S. egg production. Production for the other States are grouped into an "Other States" category and combined with the 30 States published individually to obtain a U.S. estimate. Individual State estimates for "Other States" are available annually in the "**Chickens and Eggs Summary**" report.

Egg-Type Chicks Hatched Down Slightly

Egg-type chicks **hatched** during February totaled 35.5 million, down slightly from February 1999. **Eggs in incubators** totaled 36.1 million on March 1, 2000, up 2 percent from a year ago.

Domestic placements of **egg-type pullet chicks for future hatchery supply flocks** by leading breeders totaled 251,000 during February 2000, down 6 percent from February 1999.

Broiler Hatch Up 6 Percent

The February 2000 **hatch** of broiler-type chicks, at 701 million, was up 6 percent from February of the previous year. There were 621 million **eggs in incubators** on March 1, 2000, down slightly from a year earlier.

Leading breeders placed 7.00 million **broiler-type pullet chicks for future domestic hatchery supply flocks** during February 2000, up 2 percent from February 1999.

**All Layers: Average Number on Hand During the Month,
United States, 1997-00**

Month	1997	1998	1999	2000
	<i>1,000 Layers</i>	<i>1,000 Layers</i>	<i>1,000 Layers</i>	<i>1,000 Layers</i>
Dec ¹	304,463	311,898	321,960	328,806
Jan	304,289	311,906	322,326	328,557
Feb	304,000	313,285	322,797	329,892
Mar	304,285	314,141	322,758	
Apr	303,618	311,957	321,515	
May	302,241	309,655	320,498	
Jun	300,537	309,206	320,441	
Jul	299,605	308,967	319,811	
Aug	300,211	309,291	320,173	
Sep	303,661	311,358	322,394	
Oct	306,807	313,377	325,272	
Nov	309,670	319,625	328,221	

¹ December preceding year.

**Eggs: Production During the Month by Type,
United States, 1999-00**

Month	Total Eggs		Table Eggs		Hatching Eggs	
	1999	2000	1999	2000	1999	2000
	<i>Million Eggs</i>	<i>Million Eggs</i>	<i>Million Eggs</i>	<i>Million Eggs</i>	<i>Million Eggs</i>	<i>Million Eggs</i>
Dec ¹	7,051	7,264	5,979	6,185	1,072	1,079
Jan	6,979	7,155	5,898	6,068	1,081	1,087
Feb	6,281	6,662	5,295	5,633	986	1,029
Mar	7,052		5,943		1,109	
Apr	6,784		5,708		1,076	
May	6,941		5,824		1,117	
Jun	6,742		5,652		1,090	
Jul	6,903		5,797		1,106	
Aug	6,971		5,876		1,095	
Sep	6,860		5,797		1,063	
Oct	7,131		6,039		1,092	
Nov	7,001		5,953		1,048	
During Year	82,696	21,081	69,761	17,886	12,935	3,195

¹ December preceding year.

**Layers and Eggs: Layers on Hand and Eggs Produced by Type,
and Forced Molt, United States, January-February 1999-00**

Item	Unit	1999	2000	2000 as % of 1999
Layers During Jan	1,000			
All Layers		322,326	328,557	102
Table Egg Type		263,381	270,009	103
Hatching Egg Type		58,945	58,548	99
Broiler-Type Hatching		56,210	55,834	99
Egg-Type Hatching		2,735	2,714	99
Eggs per 100 Layers During Jan	Number			
All Layers		2,165	2,178	101
Table Egg Type		2,239	2,247	100
Hatching Egg Type		1,834	1,857	101
Broiler-Type Hatching		1,806	1,830	101
Egg-Type Hatching		2,413	2,395	99
Eggs Produced During Jan	Million			
All Layers		6,979	7,155	103
Table Egg Type		5,898	6,068	103
Hatching Egg Type		1,081	1,087	101
Broiler-Type Hatching		1,015	1,022	101
Egg-Type Hatching		66	65	98
Layers on Feb 1	1,000			
All Layers		322,382	328,767	102
Table Egg Type		263,360	270,075	103
Hatching Egg Type		59,022	58,692	99
Broiler-Type Hatching		56,266	55,998	100
Egg-Type Hatching		2,756	2,694	98
Eggs per 100 Layers on Feb 1	Number			
All Layers		69.1	69.4	100
Table Egg Type		71.3	71.5	100
Hatching Egg Type		59.3	59.7	101
Broiler-Type Hatching		58.4	58.9	101
Egg-Type Hatching		76.3	76.1	100
Forced Molt Layers on Feb 1	Percent			
Percent Being Molted		4.9	5.0	102
Percent with Molt Completed		22.1	21.4	97
Layers Sold for Slaughter During Jan	1,000	16,701	16,754	100
Layers Rendered, Died, Destroyed, Composted or Disappeared For Any Reason During Jan	1,000	3,657	4,163	114
Pullets Less Than 20 Weeks of Age, Feb 1	1,000	94,253	95,816	102
Pullets Added During Jan ¹	1,000	21,239	22,181	104

¹ Pullet chicks one day old added to pullet flocks.

**Layers and Eggs: Layers on Hand and Eggs Produced by Type,
and Forced Molt, United States, February-March 1999-00**

Item	Unit	1999 ¹	2000	2000 as % of 1999
Layers During Feb	1,000			
All Layers		322,797	329,892	102
Table Egg Type		263,516	270,768	103
Hatching Egg Type		59,281	59,124	100
Broiler-Type Hatching		56,467	56,417	100
Egg-Type Hatching		2,814	2,707	96
Eggs per 100 Layers During Feb	Number			
All Layers		1,946	2,019	104
Table Egg Type		2,009	2,080	104
Hatching Egg Type		1,663	1,740	105
Broiler-Type Hatching		1,640	1,718	105
Egg-Type Hatching		2,132	2,216	104
Eggs Produced During Feb	Million			
All Layers		6,281	6,662	106
Table Egg Type		5,295	5,633	106
Hatching Egg Type		986	1,029	104
Broiler-Type Hatching		926	969	105
Egg-Type Hatching		60	60	100
Layers on Mar 1	1,000			
All Layers		323,161	330,976	102
Table Egg Type		263,644	271,442	103
Hatching Egg Type		59,517	59,534	100
Broiler-Type Hatching		56,653	56,823	100
Egg-Type Hatching		2,864	2,711	95
Eggs per 100 Layers on Mar 1	Number			
All Layers		69.6	69.5	100
Table Egg Type		71.9	71.6	100
Hatching Egg Type		59.4	60.0	101
Broiler-Type Hatching		58.6	59.2	101
Egg-Type Hatching		75.1	77.9	104
Forced Molt Layers, Mar 1	Percent			
Percent Being Molted		3.3	3.6	109
Percent with Molt Completed		21.8	22.1	101
Layers Sold for Slaughter During Feb	1,000	14,875	16,414	110
Layers Rendered, Died, Destroyed, Composted or Disappeared For Any Reason During Feb	1,000	3,249	3,893	120
Pullets Less Than 20 Weeks of Age, Mar 1	1,000	95,279	92,490	97
Pullets Added During Feb ²	1,000	21,591	20,324	94

¹ Revised.

² Pullet chicks one day old added to pullet flocks.

Layers and Eggs: Layers on Hand and Eggs Produced by Type, and Forced Molt, 30 Selected States, January-February, 1999-00 ¹

Item	Unit	1999	2000	2000 as % of 1999
Layers During Jan	1,000			
All Layers		304,409	308,962	101
Table Egg Type		249,843	254,855	102
Hatching Egg Type		54,566	54,107	99
Broiler-Type Hatching		51,953	51,495	99
Egg-Type Hatching		2,613	2,612	100
Eggs per 100 Layers During Jan	Number			
All Layers		2,165	2,176	101
Table Egg Type		2,237	2,244	100
Hatching Egg Type		1,834	1,852	101
Broiler-Type Hatching		1,805	1,823	101
Egg-Type Hatching		2,411	2,412	100
Eggs Produced During Jan	Million			
All Layers		6,590	6,722	102
Table Egg Type		5,589	5,720	102
Hatching Egg Type		1,001	1,002	100
Broiler-Type Hatching		938	939	100
Egg-Type Hatching		63	63	100
Layers on Feb 1	1,000			
All Layers		304,423	309,168	102
Table Egg Type		249,752	254,947	102
Hatching Egg Type		54,671	54,221	99
Broiler-Type Hatching		52,037	51,623	99
Egg-Type Hatching		2,634	2,598	99
Eggs per 100 Layers on Feb 1	Number			
All Layers		69.3	69.3	100
Table Egg Type		71.5	71.3	100
Hatching Egg Type		59.4	59.5	100
Broiler-Type Hatching		58.6	58.7	100
Egg-Type Hatching		76.3	76.0	100
Forced Molt Layers on Feb 1	Percent			
Percent Being Molted		4.8	4.9	102
Percent with Molt Completed		22.1	21.4	97
Layers Sold for Slaughter During Jan	1,000	15,575	15,841	102
Layers Rendered, Died, Destroyed, Composted or Disappeared For Any Reason During Jan	1,000	3,463	3,946	114
Pullets Less Than 20 Weeks of Age, Feb 1	1,000	88,765	89,893	101
Pullets Added During Jan ²	1,000	20,449	21,272	104

¹ The 30 States are listed in the table on page 8.

² Pullet chicks one day old added to pullet flocks.

Layers and Eggs: Layers on Hand and Eggs Produced by Type, and Forced Molt, 30 Selected States, February-March, 1999-00¹

Item	Unit	1999 ²	2000	2000 as % of 1999
Layers During Feb	1,000			
All Layers		304,733	310,130	102
Table Egg Type		249,894	255,588	102
Hatching Egg Type		54,839	54,542	99
Broiler-Type Hatching		52,145	51,930	100
Egg-Type Hatching		2,694	2,612	97
Eggs per 100 Layers During Feb	1,000			
All Layers		1,947	2,017	104
Table Egg Type		2,008	2,077	103
Hatching Egg Type		1,669	1,736	104
Broiler-Type Hatching		1,645	1,712	104
Egg-Type Hatching		2,116	2,221	105
Eggs Produced During Feb	Million			
All Layers		5,934	6,256	105
Table Egg Type		5,019	5,309	106
Hatching Egg Type		915	947	103
Broiler-Type Hatching		858	889	104
Egg-Type Hatching		57	58	102
Layers on Mar 1	1,000			
All Layers		305,003	311,063	102
Table Egg Type		250,015	256,218	102
Hatching Egg Type		54,988	54,845	100
Broiler-Type Hatching		52,241	52,228	100
Egg-Type Hatching		2,747	2,617	95
Eggs per 100 Layers on Mar 1	Number			
All Layers		69.6	69.7	100
Table Egg Type		71.8	71.8	100
Hatching Egg Type		59.6	59.8	100
Broiler-Type Hatching		58.8	58.9	100
Egg-Type Hatching		75.4	77.8	103
Forced Molt Layers, Mar 1	Percent			
Percent Being Molted		3.3	3.5	106
Percent with Molt Completed		21.5	22.4	104
Layers Sold for Slaughter During Feb	1,000	14,281	15,569	109
Layers Rendered, Died, Destroyed, Composted or Disappeared For Any Reason During Feb	1,000	3,112	3,724	120
Pullets Less Than 20 Weeks of Age, Mar 1	1,000	89,819	86,730	97
Pullets Added During Feb ³	1,000	20,852	19,132	92

¹ The 30 States are listed in the table on page 8.

² Revised.

³ Pullet chicks one day old added to pullet flocks.

**Layers and Eggs: Layers on Hand and Eggs Produced by State
and United States, During January 1999-00**

State	Table Egg Layers in Flocks 30,000 and Above		All Layers ¹		Eggs per 100 for All Layers ¹	
	1999	2000	1999	2000	1999	2000
	<i>1,000</i>	<i>1,000</i>	<i>1,000</i>	<i>1,000</i>	<i>Number</i>	<i>Number</i>
AL	3,616	3,344	10,561	10,483	1,932	1,927
AR	4,556	5,081	15,048	15,509	1,901	1,954
CA	25,834	23,816	26,606	24,517	2,180	2,219
CO	2,937	3,295	3,478	3,774	2,128	2,332
CT	2,943	2,980	3,126	3,114	2,303	2,344
FL	10,223	9,946	10,968	10,641	2,298	2,190
GA	12,028	11,809	21,540	20,975	2,080	2,122
HI	587	552	614	580	2,068	2,103
IL	2,644	3,261	2,891	3,511	2,179	2,193
IN	21,154	21,963	21,859	22,639	2,246	2,288
IA	24,183	26,585	25,104	27,407	2,175	2,255
ME	4,947	4,226	5,064	4,333	2,468	2,400
MD	3,160	3,027	3,611	3,460	2,354	2,370
MI	5,490	5,901	5,770	6,178	2,203	2,171
MN	11,448	12,010	12,168	12,710	2,153	2,179
MS	1,738	1,780	6,809	6,605	1,997	1,998
MO	5,152	4,599	6,576	6,001	2,205	2,183
NE	10,612	11,726	10,762	11,876	2,146	2,097
NY	3,370	3,713	3,616	3,899	2,406	2,360
NC	3,667	3,584	11,471	11,456	1,944	1,912
OH	29,700	31,421	30,410	32,120	2,243	2,235
OK	2,014	1,962	3,974	4,006	1,963	1,947
OR	2,883	2,795	3,039	2,974	2,264	2,354
PA	21,294	21,278	22,701	22,739	2,335	2,238
SC	3,739	3,680	4,773	4,606	1,948	2,084
SD	1,928	1,882	2,169	2,142	2,305	2,241
TX	13,601	13,727	17,587	17,853	2,098	2,151
VA	1,488	1,641	3,592	3,718	1,893	1,937
WA	4,820	4,625	4,940	4,745	2,356	2,306
WI	3,090	3,749	3,582	4,391	2,289	2,368
30 Sts	244,846	249,958	304,409	308,962	2,165	2,176
Oth Sts ²	12,484	14,117	17,917	19,595	2,171	2,210
US	257,330	264,075	322,326	328,557	2,165	2,178

¹ Includes all layers and eggs produced in both table egg and hatching egg flocks regardless of size.

² Estimates for individual States are not available.

**Layers and Eggs: Layers on Hand and Eggs Produced by State
and United States, During February 1999-00**

State	Table Egg Layers in Flocks 30,000 and Above		All Layers ¹		Eggs per 100 for All Layers ¹	
	1999	2000	1999	2000	1999	2000
	<i>1,000</i>	<i>1,000</i>	<i>1,000</i>	<i>1,000</i>	<i>Number</i>	<i>Number</i>
AL	3,669	3,341	10,612	10,684	1,772	1,788
AR	4,732	5,008	15,275	15,483	1,709	1,847
CA	25,508	23,644	26,238	24,343	1,963	2,054
CO	2,999	3,366	3,536	3,844	1,867	2,133
CT	2,927	3,009	3,105	3,143	2,061	2,164
FL	10,226	9,878	10,973	10,560	2,096	2,008
GA	12,143	11,963	21,687	21,139	1,872	1,954
HI	600	567	629	596	1,876	1,946
IL	2,527	3,348	2,783	3,607	2,048	2,079
IN	21,364	22,063	22,095	22,755	2,010	2,114
IA	23,769	26,678	24,696	27,485	2,017	2,132
ME	4,739	4,128	4,860	4,236	2,222	2,219
MD	3,176	3,012	3,580	3,415	2,151	2,138
MI	5,613	5,992	5,898	6,271	1,952	2,011
MN	11,493	12,053	12,216	12,766	1,940	2,084
MS	1,853	1,796	6,991	6,725	1,831	1,859
MO	5,155	4,721	6,558	6,123	1,998	2,090
NE	10,694	11,698	10,844	11,848	1,964	1,916
NY	3,472	3,690	3,722	3,874	2,149	2,220
NC	3,634	3,593	11,440	11,487	1,766	1,785
OH	29,919	31,483	30,627	32,158	1,907	2,009
OK	1,987	1,964	3,990	4,079	1,754	1,814
OR	2,807	2,856	2,973	3,035	2,082	2,208
PA	21,376	21,780	22,790	23,250	2,089	2,103
SC	3,872	3,693	4,917	4,624	1,851	1,925
SD	1,928	1,900	2,168	2,160	2,076	2,037
TX	13,357	13,609	17,384	17,756	1,910	1,949
VA	1,531	1,541	3,691	3,598	1,761	1,779
WA	4,805	4,612	4,925	4,732	2,099	2,206
WI	3,026	3,717	3,530	4,354	2,096	2,205
30 Sts	244,901	250,703	304,733	310,130	1,947	2,017
Oth Sts ²	12,577	14,149	18,064	19,762	1,921	2,054
US	257,478	264,852	322,797	329,892	1,946	2,019

¹ Includes all layers and eggs produced in both table egg and hatching egg flocks regardless of size.

² Estimates for individual States are not available.

**Egg Production: By Type, State, and United States,
January 1999-00**

State	Total Production		Table Eggs ¹		Hatching Eggs ¹	
	1999	2000	1999	2000	1999	2000
	<i>Million Eggs</i>	<i>Million Eggs</i>	<i>Million Eggs</i>	<i>Million Eggs</i>	<i>Million Eggs</i>	<i>Million Eggs</i>
AL	204	202	82	73	122	129
AR	286	303	100	117	186	186
CA	580	544				
CO	74	88				
CT	72	73				
FL	252	233	238	221	14	12
GA	448	445	266	265	182	180
HI	12.7	12.2	12.7	12.2	0	0
IL	63	77	59	73	4	4
IN	491	518	479	506	12	12
IA	546	618				
ME	125	104				
MD	85	82	78	74	7	8
MI	130	134				
MN	262	277	252	268	10	9
MS	136	132	42	42	94	90
MO	145	131				
NE	231	249	231	249	0	0
NY	87	92				
NC	223	219	88	88	135	131
OH	682	718				
OK	78	78	46	46	32	32
OR	69	70	68	68	1	2
PA	530	509	513	491	17	18
SC	93	96	79	80	14	16
SD	50	48	50	48	0	0
TX	369	384				
VA	68	72	32	36	36	36
WA	116	109				
WI	82	104				
30 Sts	6,590	6,722	5,589	5,720	1,001	1,002
Oth Sts ²	389	433	309	348	80	85
US	6,979	7,155	5,898	6,068	1,081	1,087

¹ Data by type of flock not shown for some States to avoid disclosing individual operations.

² Estimates for individual States are not available.

**Egg Production: By Type, State, and United States,
February 1999-00**

State	Total Production		Table Eggs ¹		Hatching Eggs ¹	
	1999	2000	1999	2000	1999	2000
	<i>Million Eggs</i>	<i>Million Eggs</i>	<i>Million Eggs</i>	<i>Million Eggs</i>	<i>Million Eggs</i>	<i>Million Eggs</i>
AL	188	191	76	67	112	124
AR	261	286	93	109	168	177
CA	515	500				
CO	66	82				
CT	64	68				
FL	230	212	217	200	13	12
GA	406	413	241	245	165	168
HI	11.8	11.6	11.8	11.6	0	0
IL	57	75	53	71	4	4
IN	444	481	433	469	11	12
IA	498	586				
ME	108	94				
MD	77	73	71	67	6	6
MI	115	126				
MN	237	266	227	257	10	9
MS	128	125	41	39	87	86
MO	131	128				
NE	213	227	213	227	0	0
NY	80	86				
NC	202	205	78	82	124	123
OH	584	646				
OK	70	74	41	43	29	31
OR	62	67	61	65	1	2
PA	476	489	460	472	16	17
SC	91	89	76	73	15	16
SD	45	44	45	44	0	0
TX	332	346				
VA	65	64	32	31	33	33
WA	103	104				
WI	74	96				
30 Sts	5,934	6,256	5,019	5,309	915	947
Oth Sts ²	347	406	276	324	71	82
US	6,281	6,662	5,295	5,633	986	1,029

¹ Data by type of flock not shown for some States to avoid disclosing individual operations.

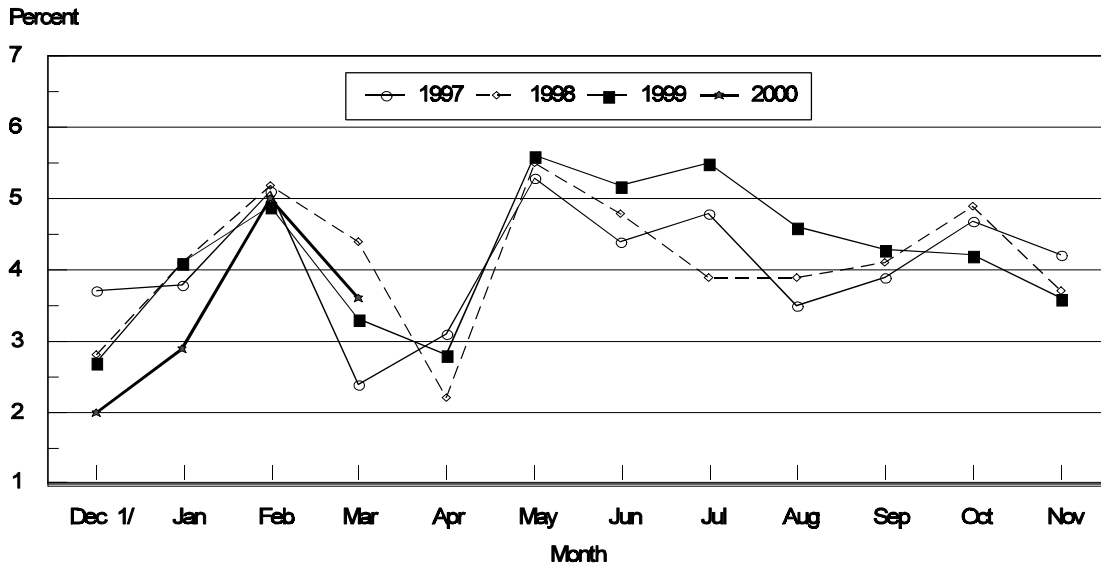
² Estimates for individual States are not available.

**Forced Molt: Percent of All Layers by Month,
United States, 1999-00 ¹**

Month	Percent Being Molted		Percent with Molt Completed	
	1999	2000	1999	2000
	<i>Percent</i>	<i>Percent</i>	<i>Percent</i>	<i>Percent</i>
Jan	4.1	2.9	22.5	22.9
Feb	4.9	5.0	22.1	21.4
Mar	3.3	3.6	21.8	22.1
Apr	2.8		21.7	
May	5.6		21.7	
Jun	5.2		21.9	
Jul	5.5		22.1	
Aug	4.6		23.0	
Sep	4.3		22.2	
Oct	4.2		22.8	
Nov	3.6		23.1	
Dec	2.0		24.4	

¹ As of first of month.

**All Layers : United States
Percent Being Molted, 1997 - 2000
First of Month**



1/ Previous Year

**Forced Molt: Percent of All Layers by State
and United States, March 1999-00 ¹**

State	Percent Being Molted		Percent with Molt Completed	
	1999	2000	1999	2000
	<i>Percent</i>	<i>Percent</i>	<i>Percent</i>	<i>Percent</i>
AL	1.5	4.5	13.0	8.5
AR	1.5	6.0	9.5	9.0
CA	7.5	5.0	36.5	42.5
CO	1.5	2.5	34.5	20.5
CT	0.0	2.5	10.0	11.0
FL	8.0	6.0	30.5	36.0
GA	3.0	3.5	20.0	15.0
HI	10.5	6.5	38.0	46.5
IL	8.5	14.0	17.5	12.5
IN	3.0	2.5	30.0	29.0
IA	3.0	4.5	28.5	33.5
ME	0.0	0.0	1.5	0.0
MD	2.0	0.0	36.5	42.0
MI	2.5	2.0	18.5	27.0
MN	3.0	3.0	35.5	30.0
MS	2.5	3.0	3.0	12.0
MO	3.0	1.0	20.0	25.5
NE	1.0	3.5	15.0	26.5
NY	1.0	1.5	5.5	4.5
NC	1.0	1.5	8.0	8.0
OH	2.0	1.5	16.0	14.0
OK	1.0	1.0	7.0	9.5
OR	3.0	4.0	41.5	38.5
PA	4.5	3.5	17.5	20.0
SC	1.0	7.0	19.0	32.5
SD	2.5	3.5	27.0	27.5
TX	5.5	3.0	17.0	13.0
VA	0.5	4.5	9.0	15.0
WA	8.5	6.5	46.0	39.5
WI	0.0	4.0	27.0	24.0
30 Sts	3.3	3.5	21.5	22.4
Oth Sts ²	3.5	5.3	27.7	17.9
US	3.3	3.6	21.8	22.1

¹ As of first of month.

² Estimates for individual States are not available.

**Hatchery Production: Eggs in Incubators, Chicks Hatched,
and Placements by Type, United States, February-March 1999-00**

Item	1999	2000	2000 as % of 1999
	<i>1,000</i>	<i>1,000</i>	<i>Percent</i>
Egg-Type			
Eggs in Incubators on Mar 1	35,347	36,078	102
Chicks Hatched During Feb	35,648	35,491	100
Chicks Hatched Jan thru Feb	71,301	69,616	98
Pullets Hatched During Feb for Intended Placements in Hatchery Supply Flocks	267	251	94
7-18 Month Earlier ¹	3,120	2,945	94
Broiler-Type			
Eggs in Incubators on Mar 1	623,749	620,879	100
Chicks Hatched During Feb	661,739	700,967	106
Chicks Hatched Jan thru Feb	1,397,087	1,450,342	104
Pullets Hatched During Feb for Intended Placements in Hatchery Supply Flocks	6,882	7,001	102
7-15 Months Earlier ²	59,937	64,255	107

¹ 2000 includes pullet chicks hatched Aug 1998 through Jul 1999.

² 2000 includes pullet chicks hatched Nov 1998 through Jul 1999.

**Egg-Type Eggs in Incubators: By Region and United States,
March 1, 1999-00**

Geographic Division	1999	2000	2000 as % of 1999
	<i>1,000</i>	<i>1,000</i>	<i>Percent</i>
North Atlantic	7,021	6,406	91
E North Central	8,197	7,953	97
W North Central	7,032	7,581	108
South Atlantic	3,978	3,304	83
South Central	3,939	4,505	114
West	5,180	6,329	122
US	35,347	36,078	102

Regional Listing:

North Atlantic = CT, ME, MA, NH, NJ, NY, PA, RI, VT.

E North Central = IL, IN, MI, OH, WI.

W North Central = IA, KS, MN, MO, NE, ND, SD.

South Atlantic = DE, FL, GA, MD, NC, SC, VA, WV.

South Central = AL, AR, KY, LA, MS, OK, TN, TX.

West = AK, AZ, CA, CO, HI, ID, MT, NM, NV, OR, UT, WA, WY.

**Egg-Type Chicks Hatched: By State and United States,
February 1999-00**

State	February			Jan-Feb		
	1999	2000	2000 as % of 1999	1999	2000	2000 as % of 1999
	<i>1,000</i>	<i>1,000</i>	<i>Percent</i>	<i>1,000</i>	<i>1,000</i>	<i>Percent</i>
AR	952	628	66	1,559	1,124	72
FL	986	1,004	102	2,277	2,078	91
GA	1,984	1,879	95	4,178	4,043	97
IN	6,268	6,397	102	13,327	13,437	101
IA	4,838	4,643	96	8,812	9,111	103
KS	426	268	63	721	512	71
MN	2,057	1,656	81	3,833	3,425	89
MO	321	321	100	631	631	100
PA	5,591	4,609	82	10,593	9,552	90
Oth Sts ¹	12,225	14,086	115	25,370	25,703	101
US	35,648	35,491	100	71,301	69,616	98

¹ Not published separately to avoid disclosing data for individual operations.

Egg-Type Chicks Hatched: By Month, United States, 1998-00

Month	By Months				Cumulative			
	1998	1999	2000	2000 as % of 1999	1998	1999	2000	2000 as % of 1999
	<i>1,000</i>	<i>1,000</i>	<i>1,000</i>	<i>Percent</i>	<i>1,000</i>	<i>1,000</i>	<i>1,000</i>	<i>Percent</i>
Jan	37,159	35,653	34,125	96	37,159	35,653	34,125	96
Feb	34,593	35,648	35,491	100	71,752	71,301	69,616	98
Mar	40,590	41,325			112,342	112,626		
Apr	39,043	42,043			151,385	154,669		
May	39,192	40,590			190,577	195,259		
Jun	39,302	40,569			229,879	235,828		
Jul	35,558	34,269			265,437	270,097		
Aug	33,380	35,453			298,817	305,550		
Sep	37,943	38,841			336,760	344,391		
Oct	34,649	38,559			371,409	382,950		
Nov	31,251	33,078			402,660	416,028		
Dec	35,733	32,730			438,393	448,758		

**Intended Placements: Egg-Type Pullet Chicks for Hatchery Supply
Flocks by Month and Total, United States, 1998-00 ¹**

Month	Pullet Chicks Hatched			2000 as % of 1999	Cumulative Potential Placements Relative to Current Supply Flocks 7-18 Months Earlier ²		
	1998	1999	2000		1998	1999	2000
	<i>1,000</i>	<i>1,000</i>	<i>1,000</i>	<i>Percent</i>	<i>1,000</i>	<i>1,000</i>	<i>1,000</i>
Jan	189	166	212	128	2,823	3,029	3,012
Feb	250	267	251	94	2,764	3,120	2,945
Mar	225	257			2,863	3,020	3,078
Apr	333	287			3,034	2,942	2,981
May	192	283			3,057	3,044	2,877
Jun	354	187			2,976	3,132	2,942
Jul	298	231			2,968	3,108	2,934
Aug	185	318			2,949	3,085	2,980
Sep	324	227			2,977	3,102	2,964
Oct	358	254			2,993	3,134	
Nov	217	282			3,010	3,088	
Dec	183	175			2,929	3,179	
Total	3,108	2,934					

¹ Reported by leading breeders. Coverage may not be 100 percent. Includes expected pullet chicks from eggs sold during the preceding month at the rate of 125 pullet chicks per 30 dozen case of eggs.

² For February 2000, includes breeder pullet chicks hatched Aug 1998 through Jul 1999. The 7-18 months represent the first laying cycle. Molting and additional laying cycles will increase the cumulative potential placements.

**Broiler-Type Eggs in Incubators: By Region
and United States, March 1, 1999-00**

Geographic Division	1999	2000	2000 as % of 1999
	<i>1,000</i>	<i>1,000</i>	<i>Percent</i>
North Atlantic	12,284	11,047	90
E North Central	7,302	8,010	110
W North Central	22,791	21,026	92
South Atlantic	239,001	234,584	98
South Central	317,469	322,832	102
West	24,902	23,380	94
US	623,749	620,879	100

**Broiler-Type Chicks Hatched: By State
and United States, February 1999-00**

State	February			Jan-Feb		
	1999	2000	2000 as % of 1999	1999	2000	2000 as % of 1999
	<i>1,000</i>	<i>1,000</i>	<i>Percent</i>	<i>1,000</i>	<i>1,000</i>	<i>Percent</i>
AL	87,409	96,844	111	184,679	199,594	108
AR	97,638	103,038	106	205,835	214,542	104
DE	13,660	14,678	107	29,235	30,079	103
FL	8,738	8,893	102	18,634	18,424	99
GA	100,054	104,672	105	212,642	217,461	102
MD	27,908	27,842	100	58,964	58,918	100
MS	58,341	61,003	105	124,004	126,082	102
NC	56,808	57,013	100	119,270	120,583	101
PA	11,618	12,004	103	24,743	25,311	102
SC	14,233	15,595	110	30,656	32,861	107
TX	43,312	48,704	112	91,698	100,158	109
VA	21,611	21,882	101	45,399	45,519	100
CA TN & WV	34,873	37,346	107	74,238	77,239	104
15 Sts ¹	576,203	609,514	106	1,219,997	1,266,771	104
Oth Sts ²	85,536	91,453	107	177,090	183,571	104
US	661,739	700,967	106	1,397,087	1,450,342	104

¹ States in the weekly hatchery production estimating program.

² Not published separately to avoid disclosing data for individual operations.

Broiler Chicks Hatched: By Month, United States, 1998-00

Month	By Months				Cumulative			
	1998	1999	2000	2000 as % of 1999	1998	1999	2000	2000 as % of 1999
	<i>1,000</i>	<i>1,000</i>	<i>1,000</i>	<i>Percent</i>	<i>1,000</i>	<i>1,000</i>	<i>1,000</i>	<i>Percent</i>
Jan	711,373	735,348	749,375	102	711,373	735,348	749,375	102
Feb	645,180	661,739	700,967	106	1,356,553	1,397,087	1,450,342	104
Mar	730,316	755,179			2,086,869	2,152,266		
Apr	708,260	734,340			2,795,129	2,886,606		
May	739,319	766,161			3,534,448	3,652,767		
Jun	717,967	744,447			4,252,415	4,397,214		
Jul	722,715	750,547			4,975,130	5,147,761		
Aug	715,650	741,253			5,690,780	5,889,014		
Sep	695,281	699,664			6,386,061	6,588,678		
Oct	693,189	697,787			7,079,250	7,286,465		
Nov	678,003	673,736			7,757,253	7,960,201		
Dec	737,840	747,905			8,495,093	8,708,106		

**Intended Placements: Broiler-Type Pullet Chicks for Hatchery
Supply Flocks by Month and Total, 1998-00 ¹**

Month	Pullet Chicks Hatched			2000 as % of 1999	Cumulative Potential Placements Relative to Current Supply Flocks 7-15 Months Earlier ²		
	1998	1999	2000		1998	1999	2000
	<i>1,000</i>	<i>1,000</i>	<i>1,000</i>	<i>Percent</i>	<i>1,000</i>	<i>1,000</i>	<i>1,000</i>
US Place- ments							
Jan	6,765	7,059	6,861	97	56,552	59,403	64,050
Feb	6,328	6,882	7,001	102	57,494	59,937	64,255
Mar	6,776	7,195			57,677	60,699	64,608
Apr	6,687	7,038			58,228	61,775	64,574
May	7,062	7,736			58,085	61,893	64,636
Jun	6,932	7,041			58,516	62,877	64,738
Jul	6,788	7,088			58,325	63,005	64,542
Aug	7,109	7,665			59,054	63,377	64,365
Sep	7,328	6,870			58,320	63,197	63,630
Oct	6,883	7,121			59,088	63,460	
Nov	7,312	6,984			58,608	63,710	
Dec	6,904	6,999			58,973	64,337	
Annual Total	82,874	85,678					
Total Place- ments ³							
Jan	8,613	8,679	8,069	93			
Feb	8,273	8,473	8,302	98			
Mar	8,760	8,863					
Apr	8,300	8,572					
May	8,957	9,463					
Jun	8,757	8,333					
Jul	8,423	8,342					
Aug	8,686	8,983					
Sep	8,985	8,044					
Oct	8,756	8,223					
Nov	9,412	8,228					
Dec	8,830	8,299					
Annual Total	104,752	102,502					

¹ Reported by leading breeders. Coverage may not be 100 percent. Includes expected pullet chicks from eggs sold during the preceding month at the rate of 125 pullet chicks per 30 dozen case of eggs.

² For Feb 2000, includes breeder pullet chicks hatched Nov 1998 through Jul 1999.

³ U.S. production of intended placements worldwide.

Procedures and Reliability

Data Sources: Primary data for the "**Chickens and Eggs**" report are from weekly and/or monthly questionnaires sent to producers. An attempt is made to collect information for layer and egg estimates from each known contractor and independent producer who has over 30,000 table egg layers. Coverage for operations with less than 30,000 table egg layers are estimated each month based on data reported in December. Approximately 900 contractors, independent egg producers, and started pullet operations are contacted each month. All known hatcheries, approximately 360, are contacted for information on a weekly and/or monthly basis.

Revisions: The previous month's estimates are subject to revision if late reports or corrected data indicates a different level. Additionally, revisions needed after the monthly report will be made at the end of the marketing year and published in the annual summaries of "**Chickens and Eggs Summary**" and "**Hatchery Production**".

Procedures and Reliability: Operations are mailed a questionnaire and given adequate time to respond by mail. Those that do not respond are phoned. Great care is exercised to ensure that all operations are accounted for during each survey period. However, there are usually missing reports that must be accounted for in the estimates.

Sound statistical methodology is employed to derive estimates from the reported data. All data are checked for unusual values. All operations' data are compared to their own past operating profiles and also to trends from other operations. Data for missing operations are estimated based on similar operations or historical data. Survey data are subject to non-sampling errors such as omissions and mistakes in reporting and in processing. While these errors cannot be measured directly, they are minimized by reviewing all data for consistency and reasonableness.

Egg-type chicks hatched are comprised of all chicks of egg-type domesticated breeds including males and chicks destined for hatchery supply flocks and research purposes. The relationship of chicks hatched to chicken inventory and poultry marketings is carefully monitored. The disposition of egg-type chicks hatched prior to placement into the laying flock can vary significantly, which can make comparisons to changes in layer inventory inconsistent over time.

Intended placement data reported by leading breeders include pullet chicks expected from eggs sold the preceding month. The breeders in this report account for a large percentage of replacement pullets for hatchery supply flocks. Production of replacement pullets by these breeders indicates the number of pullets available to hatchery egg supply flocks several months before the pullets will actually move into the flocks. Beginning with the January 1996 publication the broiler-type cumulative potential placements went from 7-14 months earlier to 7-15 months earlier. The egg-type cumulative potential placements of 7-18 months represent the first laying cycle. Molting and additional laying cycles will increase the cumulative potential placements of egg-type hatching flocks.

The next "Chickens and Eggs" report will be released at 3 p.m. ET on April 24, 2000.

The United States Department of Agriculture (USDA) prohibits discrimination in all its programs on the basis of race, color, national origin, gender, religion, age, disability, political beliefs, sexual orientation, and marital or family status. (Not all prohibited bases apply to all programs.) Persons with disabilities who require alternative means for communication of program information (braille, large print, audiotape, etc.) should contact the USDA's TARGET Center at 202-720-2600 (voice and TDD).

To file a complaint of discrimination, write USDA, Director, Office of Civil Rights, Room 326-W, Whitten Building, 14th and Independence Avenue, SW, Washington, D.C., 20250-9410, or call 202-720-5964 (voice or TDD). USDA is an equal opportunity provider and employer.

ACCESS TO REPORTS!!

For your convenience, there are several ways to obtain NASS reports, data products, and services:

INTERNET ACCESS

All NASS reports are available free of charge on the worldwide Internet. For access, connect to the Internet and go to the NASS Home Page at: <http://www.usda.gov/nass/>. Select "Today's Reports" or Publications and then Reports by Calendar or Publications and then Search, by Title or Subject.

E-MAIL SUBSCRIPTION

There are two options for subscribing via e-mail. All NASS reports are available by subscription free of charge direct to your e-mail address. 1) Starting with the NASS Home Page at <http://www.usda.gov/nass/>, click on **Publications**, then click on the **Subscribe by E-mail** button which takes you to the page describing e-mail delivery of reports. Finally, click on **Go to the Subscription Page** and follow the instructions. 2) If you do NOT have Internet access, send an e-mail message to: usda-reports@usda.mannlib.cornell.edu. In the body of the message type the word: **list**.

AUTOFAX ACCESS

NASSFax service is available for some reports from your fax machine. Please call 202-720-2000, using the handset attached to your fax. Respond to the voice prompts. Document 0411 is a list of available reports.

PRINTED REPORTS OR DATA PRODUCTS

CALL OUR TOLL-FREE ORDER DESK: 800-999-6779 (U.S. and Canada)
Other areas, please call 703-834-0125 FAX: 703-834-0110
(Visa, MasterCard, check, or money order acceptable for payment.)

ASSISTANCE

For **assistance** with general agricultural statistics or further information about NASS or its products or services, contact the **Agricultural Statistics Hotline** at **800-727-9540**, 7:30 a.m. to 4:00 p.m. ET, or e-mail: nass@nass.usda.gov.