

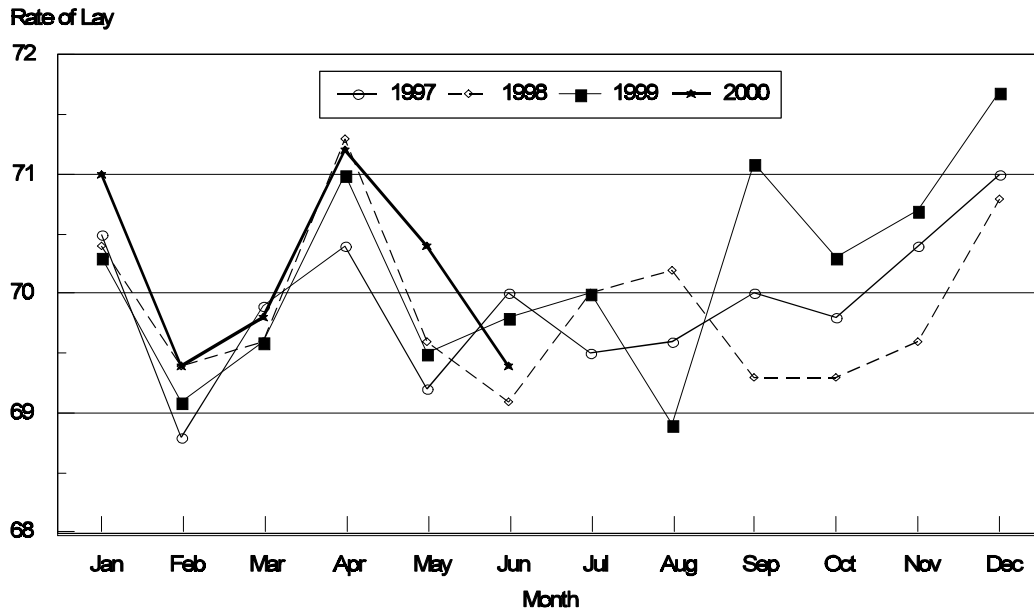
Released June 23, 2000, by the National Agricultural Statistics Service (NASS), Agricultural Statistics Board, U.S. Department of Agriculture. For information on Chickens and Eggs call Tom Kruchten at (202) 690-4870. For information on Hatch call Jody Roberts at (202) 690-8632, office hours 7:30 a.m. to 4:00 p.m. ET.

May Egg Production Up 2 Percent

U.S. egg production totaled 7.11 billion during May 2000, up 2 percent from the 6.94 billion produced in 1999. Production included 5.97 billion table eggs and 1.14 billion hatching eggs, of which 1.07 billion were broiler-type and 68.0 million were egg-type. The total number of layers during May 2000 averaged 327 million, up 2 percent from the total average number of layers during May 1999. May egg production per 100 layers was 2,176 eggs, up slightly from 2,166 eggs in May 1999.

May 2000 contained 23 weekdays, one holiday and four Saturdays, compared to 22 weekdays, one holiday and five Saturdays in May 1999.

All Layers: 1st of Month Rate of Lay
United States, 1997 - 2000
Eggs Per 100 Layers



All layers in the U.S. on June 1, 2000 totaled 325 million, up 2 percent from a year ago. The 325 million layers consisted of 266 million layers producing table or commercial type eggs, 56.8 million layers producing broiler-type hatching eggs, and 2.83 million layers producing egg-type hatching eggs. Rate of lay per day on June 1, 2000, averaged 69.4 eggs per 100 layers, down 1 percent from the 69.8 a year ago.

Laying flocks in the 30 major egg producing States produced 6.66 billion eggs during May, up 2 percent from May 1999. The average number of layers during May, at 306 million, was up 1 percent from a year earlier.

Individual State estimates are available for the 30 major egg producing States. These States are listed on page 8 of this release and account for approximately 94 percent of the total U.S. egg production. Production for the other States are grouped into an "Other States" category and combined with the 30 States published individually to obtain a U.S. estimate. Individual State estimates' for "Other States" are available annually in the "**Chickens and Eggs Summary**" report.

Egg-Type Chicks Hatched Up Slightly

Egg-type chicks **hatched** during May totaled 40.9 million, up slightly from May 1999. **Eggs in incubators** totaled 33.4 million on June 1, 2000, down 11 percent from a year ago.

Domestic placements of **egg-type pullet chicks for future hatchery supply flocks** by leading breeders totaled 343,000 during May 2000, up 21 percent from May 1999.

Broiler Hatch Up 1 Percent

The May 2000 **hatch** of broiler-type chicks, at 775 million, was up 1 percent from May of the previous year. There were 639 million **eggs in incubators** on June 1, 2000, up slightly from a year earlier.

Leading breeders placed 7.44 million **broiler-type pullet chicks for future domestic hatchery supply flocks** during May 2000, down 4 percent from May 1999.

**All Layers: Average Number on Hand During the Month,
United States, 1997-00**

Month	1997	1998	1999	2000
	<i>1,000 Layers</i>	<i>1,000 Layers</i>	<i>1,000 Layers</i>	<i>1,000 Layers</i>
Dec ¹	304,463	311,898	321,960	328,824
Jan	304,289	311,906	322,326	328,557
Feb	304,000	313,285	322,797	329,824
Mar	304,285	314,141	322,758	330,927
Apr	303,618	311,957	321,515	329,243
May	302,241	309,655	320,498	326,554
Jun	300,537	309,206	320,441	
Jul	299,605	308,967	319,811	
Aug	300,211	309,291	320,173	
Sep	303,661	311,358	322,394	
Oct	306,807	315,222	325,272	
Nov	309,670	319,625	328,253	

¹ December preceding year.

**Eggs: Production During the Month by Type,
United States, 1999-00**

Month	Total Eggs		Table Eggs		Hatching Eggs	
	1999	2000	1999	2000	1999	2000
	<i>Million Eggs</i>	<i>Million Eggs</i>	<i>Million Eggs</i>	<i>Million Eggs</i>	<i>Million Eggs</i>	<i>Million Eggs</i>
Dec ¹	7,051	7,279	5,979	6,198	1,072	1,081
Jan	6,979	7,155	5,898	6,068	1,081	1,087
Feb	6,281	6,659	5,295	5,632	986	1,027
Mar	7,052	7,235	5,943	6,111	1,109	1,124
Apr	6,784	7,013	5,708	5,911	1,076	1,102
May	6,941	7,107	5,824	5,971	1,117	1,136
Jun	6,742		5,652		1,090	
Jul	6,903		5,797		1,106	
Aug	6,971		5,876		1,095	
Sep	6,860		5,797		1,063	
Oct	7,131		6,039		1,092	
Nov	7,016		5,967		1,049	
During Year	82,711	42,448	69,775	35,891	12,936	6,557

¹ December preceding year.

**Layers and Eggs: Layers on Hand and Eggs Produced by Type,
and Forced Molt, United States, April-May 1999-00**

Item	Unit	1999	2000	2000 as % of 1999
Layers During Apr	1,000			
All Layers		321,515	329,243	102
Table Egg Type		261,596	268,708	103
Hatching Egg Type		59,919	60,535	101
Broiler-Type Hatching		57,060	57,643	101
Egg-Type Hatching		2,859	2,892	101
Eggs per 100 Layers During Apr	Number			
All Layers		2,110	2,130	101
Table Egg Type		2,182	2,200	101
Hatching Egg Type		1,796	1,820	101
Broiler-Type Hatching		1,768	1,796	102
Egg-Type Hatching		2,343	2,317	99
Eggs Produced During Apr	Million			
All Layers		6,784	7,013	103
Table Egg Type		5,708	5,911	104
Hatching Egg Type		1,076	1,102	102
Broiler-Type Hatching		1,009	1,035	103
Egg-Type Hatching		67	67	100
Layers on May 1	1,000			
All Layers		320,783	327,617	102
Table Egg Type		261,246	266,748	102
Hatching Egg Type		59,537	60,869	102
Broiler-Type Hatching		56,766	57,934	102
Egg-Type Hatching		2,771	2,935	106
Eggs per 100 Layers on May 1	Number			
All Layers		69.5	70.6	102
Table Egg Type		71.7	73.0	102
Hatching Egg Type		59.8	60.3	101
Broiler-Type Hatching		58.9	59.6	101
Egg-Type Hatching		78.3	74.8	96
Forced Molt Layers on May 1	Percent			
Percent Being Molted		5.6	4.0	71
Percent with Molt Completed		21.7	22.3	103
Layers Sold for Slaughter During Apr	1,000	18,210	16,216	89
Layers Rendered, Died, Destroyed, Composted or Disappeared For Any Reason During Apr	1,000	4,083	4,330	106
Pullets Less Than 20 Weeks of Age, May 1	1,000	98,231	97,159	99
Pullets Added During Apr ¹	1,000	25,112	22,186	88

¹ Pullet chicks one day old added to pullet flocks.

**Layers and Eggs: Layers on Hand and Eggs Produced by Type,
and Forced Molt, United States, May-June 1999-00**

Item	Unit	1999 ¹	2000	2000 as % of 1999
Layers During May	1,000			
All Layers		320,498	326,554	102
Table Egg Type		260,930	266,272	102
Hatching Egg Type		59,568	60,282	101
Broiler-Type Hatching		56,745	57,394	101
Egg-Type Hatching		2,823	2,888	102
Eggs per 100 Layers During May	Number			
All Layers		2,166	2,176	100
Table Egg Type		2,232	2,242	100
Hatching Egg Type		1,875	1,884	100
Broiler-Type Hatching		1,847	1,861	101
Egg-Type Hatching		2,444	2,355	96
Eggs Produced During May	Million			
All Layers		6,941	7,107	102
Table Egg Type		5,824	5,971	103
Hatching Egg Type		1,117	1,136	102
Broiler-Type Hatching		1,048	1,068	102
Egg-Type Hatching		69	68	99
Layers on Jun 1	1,000			
All Layers		320,211	325,448	102
Table Egg Type		260,634	265,776	102
Hatching Egg Type		59,577	59,672	100
Broiler-Type Hatching		56,708	56,841	100
Egg-Type Hatching		2,869	2,831	99
Eggs per 100 Layers on Jun 1	Number			
All Layers		69.8	69.4	99
Table Egg Type		71.9	71.3	99
Hatching Egg Type		60.5	60.9	101
Broiler-Type Hatching		59.7	60.1	101
Egg-Type Hatching		78.2	76.7	98
Forced Molt Layers, Jun 1	Percent			
Percent Being Molted		5.2	5.8	112
Percent with Molt Completed		21.9	20.4	93
Layers Sold for Slaughter During May	1,000	17,407	18,336	105
Layers Rendered, Died, Destroyed, Composted or Disappeared For Any Reason During May	1,000	3,707	5,159	139
Pullets Less Than 20 Weeks of Age, Jun 1	1,000	99,099	98,180	99
Pullets Added During May ²	1,000	22,695	24,756	109

¹ Revised.

² Pullet chicks one day old added to pullet flocks.

**Layers and Eggs: Layers on Hand and Eggs Produced by Type, and Forced
Molt, 30 Selected States, April-May, 1999-00¹**

Item	Unit	1999	2000	2000 as % of 1999
Layers During Apr	1,000			
All Layers		303,070	308,956	102
Table Egg Type		247,700	253,289	102
Hatching Egg Type		55,370	55,667	101
Broiler-Type Hatching		52,629	52,897	101
Egg-Type Hatching		2,741	2,770	101
Eggs per 100 Layers During Apr	Number			
All Layers		2,111	2,127	101
Table Egg Type		2,182	2,197	101
Hatching Egg Type		1,797	1,809	101
Broiler-Type Hatching		1,769	1,783	101
Egg-Type Hatching		2,335	2,310	99
Eggs Produced During Apr	Million			
All Layers		6,399	6,573	103
Table Egg Type		5,404	5,566	103
Hatching Egg Type		995	1,007	101
Broiler-Type Hatching		931	943	101
Egg-Type Hatching		64	64	100
Layers on May 1	1,000			
All Layers		302,579	307,394	102
Table Egg Type		247,557	251,436	102
Hatching Egg Type		55,022	55,958	102
Broiler-Type Hatching		52,367	53,127	101
Egg-Type Hatching		2,655	2,831	107
Eggs per 100 Layers on May 1	Number			
All Layers		69.6	70.6	101
Table Egg Type		71.7	72.9	102
Hatching Egg Type		59.9	60.0	100
Broiler-Type Hatching		59.0	59.2	100
Egg-Type Hatching		78.4	74.3	95
Forced Molt Layers on May 1	Percent			
Percent Being Molted		5.5	4.0	73
Percent with Molt Completed		21.8	22.4	103
Layers Sold for Slaughter During Apr	1,000	17,174	15,438	90
Layers Rendered, Died, Destroyed, Composted or Disappeared For Any Reason During Apr	1,000	3,929	4,132	105
Pullets Less Than 20 Weeks of Age, May 1	1,000	92,896	91,295	98
Pullets Added During Apr ²	1,000	24,190	20,907	86

¹ The 30 States are listed in the table on page 8.

² Pullet chicks one day old added to pullet flocks.

**Layers and Eggs: Layers on Hand and Eggs Produced by Type, and Forced
Molt, 30 Selected States, May-June, 1999-00 ¹**

Item	Unit	1999 ²	2000	2000 as % of 1999
Layers During May	1,000			
All Layers		302,208	306,395	101
Table Egg Type		247,144	251,066	102
Hatching Egg Type		55,064	55,329	100
Broiler-Type Hatching		52,354	52,545	100
Egg-Type Hatching		2,710	2,784	103
Eggs per 100 Layers During May	1,000			
All Layers		2,166	2,174	100
Table Egg Type		2,231	2,240	100
Hatching Egg Type		1,874	1,874	100
Broiler-Type Hatching		1,845	1,850	100
Egg-Type Hatching		2,435	2,335	96
Eggs Produced During May	Million			
All Layers		6,547	6,662	102
Table Egg Type		5,515	5,625	102
Hatching Egg Type		1,032	1,037	100
Broiler-Type Hatching		966	972	101
Egg-Type Hatching		66	65	98
Layers on Jun 1	1,000			
All Layers		301,806	305,366	101
Table Egg Type		246,717	250,683	102
Hatching Egg Type		55,089	54,683	99
Broiler-Type Hatching		52,329	51,954	99
Egg-Type Hatching		2,760	2,729	99
Eggs per 100 Layers on Jun 1	Number			
All Layers		70.1	69.6	99
Table Egg Type		72.2	71.6	99
Hatching Egg Type		60.5	60.6	100
Broiler-Type Hatching		59.6	59.8	100
Egg-Type Hatching		78.1	76.4	98
Forced Molt Layers, Jun 1	Percent			
Percent Being Molted		5.2	5.8	112
Percent with Molt Completed		22.0	20.3	92
Layers Sold for Slaughter During May	1,000	16,549	17,371	105
Layers Rendered, Died, Destroyed, Composted or Disappeared For Any Reason During May	1,000	3,538	4,813	136
Pullets Less Than 20 Weeks of Age, Jun 1	1,000	93,757	92,098	98
Pullets Added During May ³	1,000	21,486	23,417	109

¹ The 30 States are listed in the table on page 8.

² Revised.

³ Pullet chicks one day old added to pullet flocks.

**Layers and Eggs: Layers on Hand and Eggs Produced by State
and United States, During April 1999-00**

State	Table Egg Layers in Flocks 30,000 and Above		All Layers ¹		Eggs per 100 for All Layers ¹	
	1999	2000	1999	2000	1999	2000
	<i>1,000</i>	<i>1,000</i>	<i>1,000</i>	<i>1,000</i>	<i>Number</i>	<i>Number</i>
AL	3,695	3,019	10,656	10,531	1,914	1,890
AR	4,473	4,956	15,069	15,654	1,891	1,885
CA	24,433	23,388	25,129	23,973	2,089	2,152
CO	2,919	3,468	3,458	3,970	2,140	2,166
CT	2,952	2,927	3,134	3,061	2,170	2,221
FL	10,008	9,878	10,719	10,585	2,090	2,135
GA	11,201	11,582	20,913	20,946	2,018	2,077
HI	613	586	643	615	2,037	2,033
IL	3,049	3,383	3,337	3,654	2,158	2,189
IN	21,198	22,383	21,934	23,071	2,156	2,224
IA	24,470	26,851	25,398	27,685	2,205	2,236
ME	4,577	4,152	4,694	4,240	2,407	2,311
MD	3,069	2,937	3,454	3,335	2,200	2,129
MI	5,385	6,037	5,656	6,321	2,161	2,139
MN	11,590	11,715	12,303	12,446	2,073	2,105
MS	1,475	1,861	6,628	7,010	1,946	1,954
MO	5,296	4,709	6,713	6,022	2,145	2,142
NE	10,902	11,592	11,052	11,742	2,081	2,129
NY	3,373	3,772	3,655	3,989	2,298	2,306
NC	3,588	3,149	11,504	11,042	1,878	1,829
OH	30,119	30,963	30,829	31,633	2,271	2,165
OK	1,980	1,957	4,151	4,127	1,927	1,914
OR	2,713	2,848	2,878	3,023	2,154	2,183
PA	21,159	21,428	22,590	23,116	2,249	2,241
SC	3,901	4,019	4,967	4,986	2,033	2,006
SD	1,930	1,932	2,174	2,192	2,254	2,144
TX	13,446	12,960	17,477	17,172	2,031	2,137
VA	1,404	1,416	3,559	3,502	1,911	2,027
WA	4,619	4,706	4,739	4,826	2,224	2,267
WI	3,177	3,830	3,657	4,487	2,215	2,318
30 Sts	242,714	248,404	303,070	308,956	2,111	2,127
Oth Sts ²	12,852	14,390	18,445	20,287	2,087	2,169
US	255,566	262,794	321,515	329,243	2,110	2,130

¹ Includes all layers and eggs produced in both table egg and hatching egg flocks regardless of size.

² Estimates for individual States are not available.

**Layers and Eggs: Layers on Hand and Eggs Produced by State
and United States, During May 1999-00**

State	Table Egg Layers in Flocks 30,000 and Above		All Layers ¹		Eggs per 100 for All Layers ¹	
	1999	2000	1999	2000	1999	2000
	<i>1,000</i>	<i>1,000</i>	<i>1,000</i>	<i>1,000</i>	<i>Number</i>	<i>Number</i>
AL	3,636	2,789	10,641	10,327	1,973	1,917
AR	4,414	5,084	14,863	15,496	1,951	1,968
CA	24,385	23,155	25,098	23,729	2,120	2,170
CO	2,874	3,445	3,413	3,946	2,227	2,205
CT	2,876	2,917	3,083	3,051	2,173	2,294
FL	9,881	9,630	10,580	10,324	2,127	2,102
GA	11,243	11,193	20,858	20,408	2,033	2,058
HI	600	579	630	607	2,079	2,076
IL	2,997	3,257	3,258	3,532	2,271	2,237
IN	21,180	22,270	21,907	22,947	2,237	2,284
IA	24,711	27,004	25,627	27,847	2,244	2,341
ME	4,533	4,064	4,646	4,127	2,454	2,416
MD	2,994	2,893	3,410	3,295	2,258	2,185
MI	5,387	5,855	5,659	6,136	2,142	2,122
MN	11,635	11,740	12,348	12,473	2,154	2,237
MS	1,387	1,835	6,517	6,987	1,949	1,975
MO	5,228	4,825	6,619	6,108	2,266	2,210
NE	11,089	11,717	11,239	11,867	2,127	2,107
NY	3,311	3,687	3,589	3,906	2,340	2,355
NC	3,355	3,231	11,258	11,141	1,936	1,885
OH	30,174	30,698	30,887	31,389	2,360	2,227
OK	1,991	1,956	4,129	4,118	1,986	1,991
OR	2,634	2,762	2,799	2,932	2,251	2,285
PA	21,036	20,848	22,449	22,552	2,285	2,306
SC	4,126	4,037	5,203	5,031	2,114	2,067
SD	1,975	1,930	2,224	2,190	2,338	2,329
TX	13,271	12,888	17,333	17,208	2,100	2,144
VA	1,402	1,363	3,531	3,424	1,954	2,074
WA	4,633	4,826	4,753	4,946	2,281	2,313
WI	3,165	3,703	3,657	4,351	2,297	2,275
30 Sts	242,123	246,181	302,208	306,395	2,166	2,174
Oth Sts ²	12,741	14,176	18,290	20,159	2,154	2,207
US	254,864	260,357	320,498	326,554	2,166	2,176

¹ Includes all layers and eggs produced in both table egg and hatching egg flocks regardless of size.

² Estimates for individual States are not available.

**Egg Production: By Type, State, and United States,
April 1999-00**

State	Total Production		Table Eggs ¹		Hatching Eggs ¹	
	1999	2000	1999	2000	1999	2000
	<i>Million Eggs</i>	<i>Million Eggs</i>	<i>Million Eggs</i>	<i>Million Eggs</i>	<i>Million Eggs</i>	<i>Million Eggs</i>
AL	204	199	83	68	121	131
AR	285	295	99	107	186	188
CA	525	516				
CO	74	86				
CT	68	68				
FL	224	226	212	214	12	12
GA	422	435	244	257	178	178
HI	13.1	12.5	13.1	12.5	0	0
IL	72	80	68	76	4	4
IN	473	513	461	500	12	13
IA	560	619				
ME	113	98				
MD	76	71	71	65	5	6
MI	122	135				
MN	255	262	245	252	10	10
MS	129	137	36	45	93	92
MO	144	129				
NE	230	250	230	250	0	0
NY	84	92				
NC	216	202	82	74	134	128
OH	700	685				
OK	80	79	45	44	35	35
OR	62	66	61	64	1	2
PA	508	518	491	497	17	21
SC	101	100	83	83	18	17
SD	49	47	49	47	0	0
TX	355	367				
VA	68	71	32	33	36	38
WA	105	109				
WI	81	104				
30 Sts	6,399	6,573	5,404	5,566	995	1,007
Oth Sts ²	385	440	304	345	81	95
US	6,784	7,013	5,708	5,911	1,076	1,102

¹ Data by type of flock not shown for some States to avoid disclosing individual operations.

² Estimates for individual States are not available.

**Egg Production: By Type, State, and United States,
May 1999-00**

State	Total Production		Table Eggs ¹		Hatching Eggs ¹	
	1999	2000	1999	2000	1999	2000
	<i>Million Eggs</i>	<i>Million Eggs</i>	<i>Million Eggs</i>	<i>Million Eggs</i>	<i>Million Eggs</i>	<i>Million Eggs</i>
AL	210	198	84	63	126	135
AR	290	305	100	114	190	191
CA	532	515				
CO	76	87				
CT	67	70				
FL	225	217	213	205	12	12
GA	424	420	237	237	187	183
HI	13.1	12.6	13.1	12.6	0	0
IL	74	79	70	74	4	5
IN	490	524	478	511	12	13
IA	575	652				
ME	114	100				
MD	77	72	71	65	6	7
MI	121	130				
MN	266	279	255	269	11	10
MS	127	138	33	44	94	94
MO	150	135				
NE	239	250	239	250	0	0
NY	84	92				
NC	218	210	79	78	139	132
OH	729	699				
OK	82	82	46	46	36	36
OR	63	67	62	66	1	1
PA	513	520	495	497	18	23
SC	110	104	91	86	19	18
SD	52	51	52	51	0	0
TX	364	369				
VA	69	71	31	32	38	39
WA	108	114				
WI	84	99				
30 Sts	6,547	6,662	5,515	5,625	1,032	1,037
Oth Sts ²	394	445	309	346	85	99
US	6,941	7,107	5,824	5,971	1,117	1,136

¹ Data by type of flock not shown for some States to avoid disclosing individual operations.

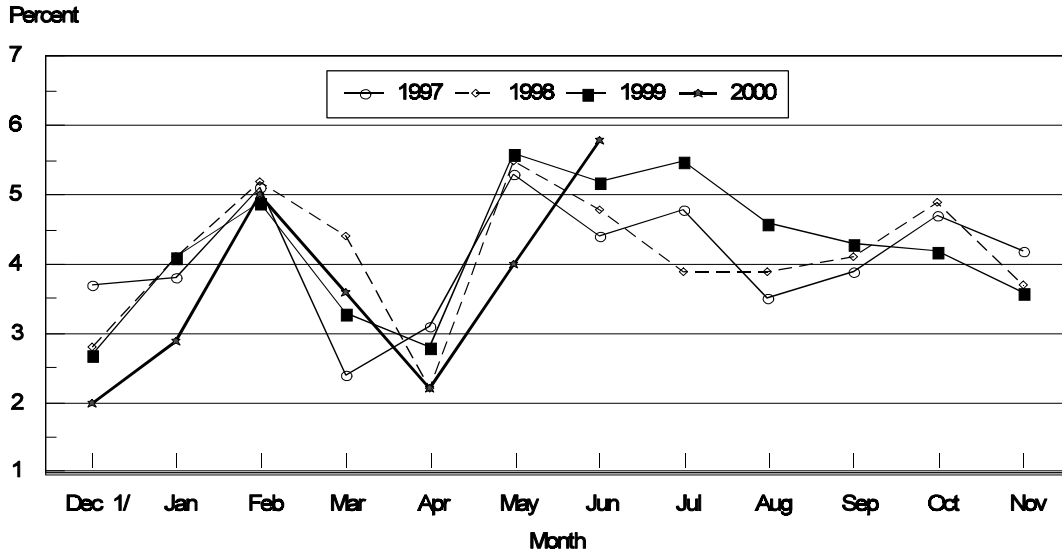
² Estimates for individual States are not available.

**Forced Molt: Percent of All Layers by Month,
United States, 1999-00 ¹**

Month	Percent Being Molted		Percent with Molt Completed	
	1999	2000	1999	2000
	<i>Percent</i>	<i>Percent</i>	<i>Percent</i>	<i>Percent</i>
Jan	4.1	2.9	22.5	22.9
Feb	4.9	5.0	22.1	21.4
Mar	3.3	3.7	21.8	22.1
Apr	2.8	2.2	21.7	22.5
May	5.6	4.0	21.7	22.3
Jun	5.2	5.8	21.9	20.4
Jul	5.5		22.1	
Aug	4.6		23.0	
Sep	4.3		22.2	
Oct	4.2		22.8	
Nov	3.6		23.1	
Dec	2.0		24.4	

¹ As of first of month.

**All Layers : United States
Percent Being Molted, 1997 - 2000
First of Month**



1/ Previous Year

**Forced Molt: Percent of All Layers by State
and United States, June 1999-00 ¹**

State	Percent Being Molted		Percent with Molt Completed	
	1999	2000	1999	2000
	<i>Percent</i>	<i>Percent</i>	<i>Percent</i>	<i>Percent</i>
AL	5.0	5.0	12.0	5.5
AR	1.5	2.5	11.0	6.0
CA	10.5	11.0	41.0	34.0
CO	4.0	2.5	28.0	19.0
CT	5.5	2.0	3.5	11.0
FL	13.0	8.0	32.0	36.0
GA	5.5	9.0	15.5	13.5
HI	7.0	9.5	44.0	49.0
IL	8.5	12.0	31.0	16.5
IN	3.0	3.0	31.0	29.5
IA	4.0	4.5	28.0	24.5
ME	0.0	0.0	1.0	0.0
MD	7.5	10.0	37.0	32.5
MI	4.0	10.0	22.0	19.5
MN	4.5	6.5	34.5	31.0
MS	3.5	5.5	8.0	2.0
MO	1.5	2.5	23.0	21.5
NE	8.0	7.5	21.5	22.0
NY	0.0	2.0	4.0	5.5
NC	3.5	2.0	7.5	8.0
OH	3.5	5.5	12.5	15.0
OK	3.0	1.0	5.5	11.0
OR	8.0	3.0	33.5	36.5
PA	7.5	6.5	17.0	18.5
SC	1.0	7.0	27.0	28.5
SD	7.5	2.0	26.5	27.0
TX	7.0	6.0	22.0	18.0
VA	0.0	0.5	13.0	13.0
WA	4.5	9.0	47.0	42.5
WI	5.0	8.5	22.0	22.5
30 Sts	5.2	5.8	22.0	20.3
Oth Sts ²	4.3	5.2	19.6	22.0
US	5.2	5.8	21.9	20.4

¹ As of first of month.

² Estimates for individual States are not available.

**Hatchery Production: Eggs in Incubators, Chicks Hatched,
and Placements by Type, United States, May-June 1999-00**

Item	1999	2000	2000 as % of 1999
	<i>1,000</i>	<i>1,000</i>	<i>Percent</i>
Egg-Type			
Eggs in Incubators on Jun 1	37,553	33,444	89
Chicks Hatched During May	40,726	40,879	100
Chicks Hatched Jan thru May	195,457	186,676	96
Pullets Hatched During May for Intended Placements in Hatchery Supply Flocks	283	343	121
7-18 Month Earlier ¹	3,044	2,900	95
Broiler-Type			
Eggs in Incubators on Jun 1	637,956	638,871	100
Chicks Hatched During May	766,422	775,181	101
Chicks Hatched Jan thru May	3,655,332	3,725,390	102
Pullets Hatched During May for Intended Placements in Hatchery Supply Flocks	7,736	7,435	96
7-15 Months Earlier ²	61,893	64,725	105

¹ 2000 includes pullet chicks hatched Nov 1998 through Oct 1999.

² 2000 includes pullet chicks hatched Feb 1999 through Oct 1999.

**Egg-Type Eggs in Incubators: By Region and United States,
June 1, 1999-00**

Geographic Division	1999	2000	2000 as % of 1999
	<i>1,000</i>	<i>1,000</i>	<i>Percent</i>
North Atlantic	7,113	5,591	79
E North Central	9,415	7,867	84
W North Central	7,451	7,649	103
South Atlantic	4,153	3,053	74
South Central	4,284	4,276	100
West	5,137	5,008	97
US	37,553	33,444	89

Regional Listing:

North Atlantic = CT, ME, MA, NH, NJ, NY, PA, RI, VT.

E North Central = IL, IN, MI, OH, WI.

W North Central = IA, KS, MN, MO, NE, ND, SD.

South Atlantic = DE, FL, GA, MD, NC, SC, VA, WV.

South Central = AL, AR, KY, LA, MS, OK, TN, TX.

West = AK, AZ, CA, CO, HI, ID, MT, NM, NV, OR, UT, WA, WY.

**Egg-Type Chicks Hatched: By State and United States,
May 1999-00**

State	May			Jan-May		
	1999	2000	2000 as % of 1999	1999	2000	2000 as % of 1999
	<i>1,000</i>	<i>1,000</i>	<i>Percent</i>	<i>1,000</i>	<i>1,000</i>	<i>Percent</i>
AR	1,013	873	86	4,085	3,678	90
FL	996	1,110	111	5,497	5,168	94
GA	2,319	1,884	81	10,351	9,714	94
IN	8,111	6,124	76	37,101	30,837	83
IA	5,567	6,822	123	25,175	27,575	110
KS	348	375	108	1,698	1,506	89
MN	1,856	1,799	97	9,914	9,037	91
MO	403	403	100	1,803	1,803	100
PA	5,088	5,455	107	28,318	26,455	93
Oth Sts ¹	15,025	16,034	107	71,515	70,903	99
US	40,726	40,879	100	195,457	186,676	96

¹ Not published separately to avoid disclosing data for individual operations.

Egg-Type Chicks Hatched: By Month, United States, 1998-00

Month	By Months				Cumulative			
	1998	1999	2000	2000 as % of 1999	1998	1999	2000	2000 as % of 1999
	<i>1,000</i>	<i>1,000</i>	<i>1,000</i>	<i>Percent</i>	<i>1,000</i>	<i>1,000</i>	<i>1,000</i>	<i>Percent</i>
Jan	37,168	35,242	34,125	97	37,168	35,242	34,125	97
Feb	34,597	36,367	35,491	98	71,765	71,609	69,616	97
Mar	40,604	41,172	39,560	96	112,369	112,781	109,176	97
Apr	39,057	41,950	36,621	87	151,426	154,731	145,797	94
May	39,206	40,726	40,879	100	190,632	195,457	186,676	96
Jun	39,323	41,474			229,955	236,931		
Jul	35,576	34,275			265,531	271,206		
Aug	33,398	35,454			298,929	306,660		
Sep	37,959	39,287			336,888	345,947		
Oct	34,667	39,044			371,555	384,991		
Nov	31,217	32,892			402,772	417,883		
Dec	35,501	33,045			438,273	450,928		

**Intended Placements: Egg-Type Pullet Chicks for Hatchery Supply
Flocks by Month and Total, United States, 1998-00¹**

Month	Pullet Chicks Hatched			2000 as % of 1999	Cumulative Potential Placements Relative to Current Supply Flocks 7-18 Months Earlier ²		
	1998	1999	2000		1998	1999	2000
	<i>1,000</i>	<i>1,000</i>	<i>1,000</i>	<i>Percent</i>	<i>1,000</i>	<i>1,000</i>	<i>1,000</i>
Jan	189	166	212	128	2,823	3,029	3,012
Feb	250	267	251	94	2,764	3,120	2,945
Mar	225	257	286	111	2,863	3,020	3,078
Apr	333	287	309	108	3,034	2,942	2,981
May	192	283	343	121	3,057	3,044	2,900
Jun	354	187			2,976	3,132	2,945
Jul	298	231			2,968	3,108	2,937
Aug	185	318			2,949	3,085	2,983
Sep	324	227			2,977	3,102	2,967
Oct	358	277			2,993	3,134	2,996
Nov	217	262			3,010	3,088	3,018
Dec	183	175			2,929	3,179	3,078
Total	3,108	2,937					

¹ Reported by leading breeders. Coverage may not be 100 percent. Includes expected pullet chicks from eggs sold during the preceding month at the rate of 125 pullet chicks per 30 dozen case of eggs.

² For May 2000, includes breeder pullet chicks hatched Nov 1998 through Oct 1999. The 7-18 months represent the first laying cycle. Molting and additional laying cycles will increase the cumulative potential placements.

**Broiler-Type Eggs in Incubators: By Region
and United States, June 1, 1999-00**

Geographic Division	1999	2000	2000 as % of 1999
	<i>1,000</i>	<i>1,000</i>	<i>Percent</i>
North Atlantic	11,726	11,766	100
E North Central	9,157	8,134	89
W North Central	22,651	20,772	92
South Atlantic	241,305	239,918	99
South Central	326,915	333,139	102
West	26,202	25,142	96
US	637,956	638,871	100

**Broiler-Type Chicks Hatched: By State
and United States, May 1999-00**

State	May			Jan-May		
	1999	2000	2000 as % of 1999	1999	2000	2000 as % of 1999
	<i>1,000</i>	<i>1,000</i>	<i>Percent</i>	<i>1,000</i>	<i>1,000</i>	<i>Percent</i>
AL	100,070	105,961	106	477,143	512,713	107
AR	111,701	111,715	100	535,555	542,459	101
DE	16,475	15,578	95	78,906	76,565	97
FL	9,734	10,143	104	49,179	48,168	98
GA	114,469	114,878	100	551,669	555,794	101
MD	32,551	31,456	97	154,426	152,662	99
MS	66,416	67,683	102	320,497	324,944	101
NC	66,160	67,874	103	312,942	315,812	101
PA	13,100	13,390	102	64,150	64,471	101
SC	17,015	16,588	97	80,672	83,515	104
TX	50,053	55,293	110	240,262	261,218	109
VA	24,992	24,922	100	119,062	118,743	100
CA TN & WV	42,274	42,336	100	198,610	201,218	101
15 Sts ¹	665,010	677,817	102	3,183,073	3,258,282	102
Oth Sts ²	101,412	97,364	96	472,259	467,108	99
US	766,422	775,181	101	3,655,332	3,725,390	102

¹ States in the weekly hatchery production estimating program.

² Not published separately to avoid disclosing data for individual operations.

Broiler Chicks Hatched: By Month, United States, 1998-00

Month	By Months				Cumulative			
	1998	1999	2000	2000 as % of 1999	1998	1999	2000	2000 as % of 1999
	<i>1,000</i>	<i>1,000</i>	<i>1,000</i>	<i>Percent</i>	<i>1,000</i>	<i>1,000</i>	<i>1,000</i>	<i>Percent</i>
Jan	711,373	735,768	749,375	102	711,373	735,768	749,375	102
Feb	645,180	662,604	700,967	106	1,356,553	1,398,372	1,450,342	104
Mar	730,316	755,804	756,351	100	2,086,869	2,154,176	2,206,693	102
Apr	708,260	734,734	743,516	101	2,795,129	2,888,910	2,950,209	102
May	739,319	766,422	775,181	101	3,534,448	3,655,332	3,725,390	102
Jun	717,967	744,372			4,252,415	4,399,704		
Jul	722,715	751,627			4,975,130	5,151,331		
Aug	715,650	741,716			5,690,780	5,893,047		
Sep	695,281	700,016			6,386,061	6,593,063		
Oct	693,204	697,434			7,079,265	7,290,497		
Nov	674,851	676,769			7,754,116	7,967,266		
Dec	737,822	748,438			8,491,938	8,715,704		

**Intended Placements: Broiler-Type Pullet Chicks for Hatchery
Supply Flocks by Month and Total, 1998-00 ¹**

Month	Pullet Chicks Hatched			2000 as % of 1999	Cumulative Potential Placements Relative to Current Supply Flocks 7-15 Months Earlier ²		
	1998	1999	2000		1998	1999	2000
	<i>1,000</i>	<i>1,000</i>	<i>1,000</i>	<i>Percent</i>	<i>1,000</i>	<i>1,000</i>	<i>1,000</i>
US Place- ments							
Jan	6,765	7,059	6,861	97	56,552	59,403	64,139
Feb	6,328	6,882	7,001	102	57,494	59,937	64,344
Mar	6,776	7,284	7,310	100	57,677	60,699	64,697
Apr	6,687	7,038	6,764	96	58,228	61,775	64,663
May	7,062	7,736	7,435	96	58,085	61,893	64,725
Jun	6,932	7,041			58,516	62,877	64,827
Jul	6,788	7,088			58,325	63,005	64,536
Aug	7,109	7,665			59,054	63,377	64,359
Sep	7,328	6,870			58,320	63,197	63,624
Oct	6,883	7,121			59,088	63,549	63,893
Nov	7,312	6,984			58,608	63,799	63,569
Dec	6,904	6,993			58,973	64,426	63,339
Annual Total	82,874	85,761					
Total Place- ments ³							
Jan	8,613	8,679	8,069	93			
Feb	8,273	8,473	8,302	98			
Mar	8,760	8,863	8,798	99			
Apr	8,300	8,572	8,522	99			
May	8,957	9,463	8,917	94			
Jun	8,757	8,333					
Jul	8,423	8,342					
Aug	8,686	8,983					
Sep	8,985	8,044					
Oct	8,756	8,223					
Nov	9,412	8,220					
Dec	8,830	8,299					
Annual Total	104,752	102,494					

¹ Reported by leading breeders. Coverage may not be 100 percent. Includes expected pullet chicks from eggs sold during the preceding month at the rate of 125 pullet chicks per 30 dozen case of eggs.

² For May 2000, includes breeder pullet chicks hatched Feb 1999 through Oct 1999.

³ U.S. production of intended placements worldwide.

Procedures and Reliability

Data Sources: Primary data for the "**Chickens and Eggs**" report are from weekly and/or monthly questionnaires sent to producers. An attempt is made to collect information for layer and egg estimates from each known contractor and independent producer who has over 30,000 table egg layers. Coverage for operations with less than 30,000 table egg layers are estimated each month based on data reported in December. Approximately 900 contractors, independent egg producers, and started pullet operations are contacted each month. All known hatcheries, approximately 330, are contacted for information on a weekly and/or monthly basis.

Revisions: The previous month's estimates are subject to revision if late reports or corrected data indicates a different level. Additionally, revisions needed after the monthly report will be made at the end of the marketing year and published in the annual summaries of "**Chickens and Eggs Summary**" and "**Hatchery Production**".

Procedures and Reliability: Operations are mailed a questionnaire and given adequate time to respond by mail. Those that do not respond are phoned. Great care is exercised to ensure that all operations are accounted for during each survey period. However, there are usually missing reports that must be accounted for in the estimates.

Sound statistical methodology is employed to derive estimates from the reported data. All data are checked for unusual values. All operations' data are compared to their own past operating profiles and also to trends from other operations. Data for missing operations are estimated based on similar operations or historical data. Survey data are subject to non-sampling errors such as omissions and mistakes in reporting and in processing. While these errors cannot be measured directly, they are minimized by reviewing all data for consistency and reasonableness.

Egg-type chicks hatched are comprised of all chicks of egg-type domesticated breeds including males and chicks destined for hatchery supply flocks and research purposes. The relationship of chicks hatched to chicken inventory and poultry marketings is carefully monitored. The disposition of egg-type chicks hatched prior to placement into the laying flock can vary significantly, which can make comparisons to changes in layer inventory inconsistent over time.

Intended placement data reported by leading breeders include pullet chicks expected from eggs sold the preceding month. The breeders in this report account for a large percentage of replacement pullets for hatchery supply flocks. Production of replacement pullets by these breeders indicates the number of pullets available to hatchery egg supply flocks several months before the pullets will actually move into the flocks. Beginning with the January 1996 publication the broiler-type cumulative potential placements went from 7-14 months earlier to 7-15 months earlier. The egg-type cumulative potential placements of 7-18 months represent the first laying cycle. Molting and additional laying cycles will increase the cumulative potential placements of egg-type hatching flocks.

The next "Chickens and Eggs" report will be released at 3 p.m. ET on July 24, 2000.

The United States Department of Agriculture (USDA) prohibits discrimination in all its programs on the basis of race, color, national origin, gender, religion, age, disability, political beliefs, sexual orientation, and marital or family status. (Not all prohibited bases apply to all programs.) Persons with disabilities who require alternative means for communication of program information (braille, large print, audiotape, etc.) should contact the USDA's TARGET Center at 202-720-2600 (voice and TDD).

To file a complaint of discrimination, write USDA, Director, Office of Civil Rights, Room 326-W, Whitten Building, 14th and Independence Avenue, SW, Washington, D.C., 20250-9410, or call 202-720-5964 (voice or TDD). USDA is an equal opportunity provider and employer.

ACCESS TO REPORTS!!

For your convenience, there are several ways to obtain NASS reports, data products, and services:

INTERNET ACCESS

All NASS reports are available free of charge on the worldwide Internet. For access, connect to the Internet and go to the NASS Home Page at: <http://www.usda.gov/nass/>. Select "Today's Reports" or Publications and then Reports by Calendar or Publications and then Search, by Title or Subject.

E-MAIL SUBSCRIPTION

There are two options for subscribing via e-mail. All NASS reports are available by subscription free of charge direct to your e-mail address. 1) Starting with the NASS Home Page at <http://www.usda.gov/nass/>, click on **Publications**, then click on the **Subscribe by E-mail** button which takes you to the page describing e-mail delivery of reports. Finally, click on **Go to the Subscription Page** and follow the instructions. 2) If you do NOT have Internet access, send an e-mail message to: usda-reports@usda.mannlib.cornell.edu. In the body of the message type the word: **list**.

AUTOFAX ACCESS

NASSFax service is available for some reports from your fax machine. Please call 202-720-2000, using the handset attached to your fax. Respond to the voice prompts. Document 0411 is a list of available reports.

PRINTED REPORTS OR DATA PRODUCTS

CALL OUR TOLL-FREE ORDER DESK: 800-999-6779 (U.S. and Canada)
Other areas, please call 703-834-0125 FAX: 703-834-0110
(Visa, MasterCard, check, or money order acceptable for payment.)

ASSISTANCE

For **assistance** with general agricultural statistics or further information about NASS or its products or services, contact the **Agricultural Statistics Hotline** at **800-727-9540**, 7:30 a.m. to 4:00 p.m. ET, or e-mail: nass@nass.usda.gov.