

# Chickens and Eggs

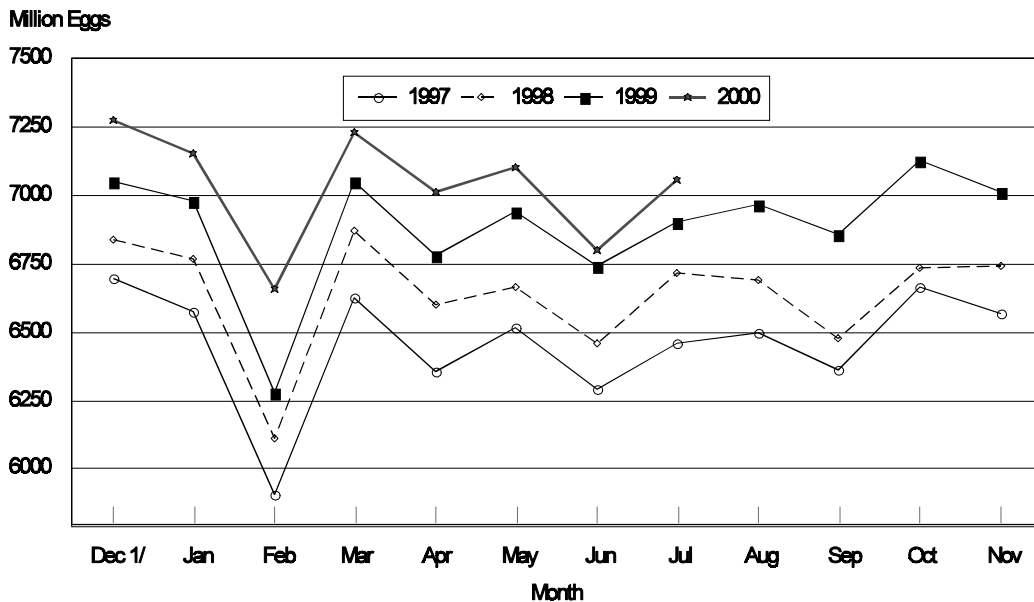
Released August 22, 2000, by the National Agricultural Statistics Service (NASS), Agricultural Statistics Board, U.S. Department of Agriculture. For information on Chickens and Eggs call Tom Kruchten at (202) 690-4870. For information on Hatch call Jody Roberts at (202) 690-8632, office hours 7:30 a.m. to 4:00 p.m. ET.

## July Egg Production Up 2 Percent

U.S. egg production totaled 7.06 billion during July 2000, up 2 percent from the 6.90 billion produced in 1999. Production included 5.95 billion table eggs and 1.10 billion hatching eggs, of which 1.04 billion were broiler-type and 65.0 million were egg-type. The total number of layers during July 2000 averaged 326 million, up 2 percent from the total average number of layers during July 1999. July egg production per 100 layers was 2,167 eggs, up slightly from 2,158 eggs in July 1999.

July 2000 contained 21 weekdays and five Saturdays, compared to 22 weekdays and five Saturdays in July 1999.

## All Egg Production By Months United States, 1997 - 2000



1/ Previous Year

All layers in the U.S. on August 1, 2000, totaled 326 million, up 2 percent from a year ago. The 326 million layers consisted of 267 million layers producing table or commercial type eggs, 56.3 million layers producing broiler-type hatching eggs, and 2.77 million layers producing egg-type hatching eggs. Rate of lay per day on August 1, 2000, averaged 70.0 eggs per 100 layers, up 1 percent from the 69.2 a year ago.

Laying flocks in the 30 major egg producing States produced 6.63 billion eggs during July, up 2 percent from July 1999. The average number of layers during July, at 306 million, was up 2 percent from a year earlier.

Individual State estimates are available for the 30 major egg producing States. These States are listed on page 8 of this release and account for approximately 94 percent of the total U.S. egg production. Production for the other States are grouped into an "Other States" category and combined with the 30 States published individually to obtain a U.S. estimate. Individual State estimates' for "Other States" are available annually in the "**Chickens and Eggs Summary**" report.

### **Egg-Type Chicks Hatched Down 3 Percent**

Egg-type chicks **hatched** during July totaled 33.1 million, down 3 percent from July 1999. **Eggs in incubators** totaled 30 million on August 1, 2000, up 2 percent from a year ago.

Domestic placements of **egg-type pullet chicks for future hatchery supply flocks** by leading breeders totaled 352,000 during July 2000, up 52 percent from July 1999.

### **Broiler Hatch Down 2 Percent**

The July 2000 **hatch** of broiler-type chicks, at 740 million, was down 2 percent from July of the previous year. There were 614 million **eggs in incubators** on August 1, 2000, down 2 percent from a year earlier.

Leading breeders placed 6.31 million **broiler-type pullet chicks for future domestic hatchery supply flocks** during July 2000, down 11 percent from July 1999.

**All Layers: Average Number on Hand During the Month,  
United States, 1997-00**

Month	1997	1998	1999	2000
	<i>1,000 Layers</i>	<i>1,000 Layers</i>	<i>1,000 Layers</i>	<i>1,000 Layers</i>
Dec <sup>1</sup>	304,463	311,898	321,960	328,824
Jan	304,289	311,906	322,326	328,557
Feb	304,000	313,285	322,797	329,824
Mar	304,285	314,141	322,758	330,927
Apr	303,618	311,957	321,515	329,243
May	302,241	309,655	320,498	326,426
Jun	300,537	309,206	320,441	325,121
Jul	299,605	308,967	319,811	325,670
Aug	300,211	309,291	320,173	
Sep	303,661	311,358	322,394	
Oct	306,807	315,222	325,272	
Nov	309,670	319,625	328,253	

<sup>1</sup> December preceding year.

**Eggs: Production During the Month by Type,  
United States, 1999-00**

Month	Total Eggs		Table Eggs		Hatching Eggs	
	1999	2000	1999	2000	1999	2000
	<i>Million Eggs</i>	<i>Million Eggs</i>	<i>Million Eggs</i>	<i>Million Eggs</i>	<i>Million Eggs</i>	<i>Million Eggs</i>
Dec <sup>1</sup>	7,051	7,279	5,979	6,198	1,072	1,081
Jan	6,979	7,155	5,898	6,068	1,081	1,087
Feb	6,281	6,659	5,295	5,632	986	1,027
Mar	7,052	7,235	5,943	6,111	1,109	1,124
Apr	6,784	7,013	5,708	5,911	1,076	1,102
May	6,941	7,105	5,824	5,971	1,117	1,134
Jun	6,742	6,799	5,652	5,720	1,090	1,079
Jul	6,903	7,056	5,797	5,952	1,106	1,104
Aug	6,971		5,876		1,095	
Sep	6,860		5,797		1,063	
Oct	7,131		6,039		1,092	
Nov	7,016		5,967		1,049	
During Year	82,711	56,301	69,775	47,563	12,936	8,738

<sup>1</sup> December preceding year.

**Layers and Eggs: Layers on Hand and Eggs Produced by Type,  
and Forced Molt, United States, June-July 1999-00**

Item	Unit	1999	2000	2000 as % of 1999
Layers During Jun	1,000			
All Layers		320,441	325,121	101
Table Egg Type		260,581	265,842	102
Hatching Egg Type		59,860	59,279	99
Broiler-Type Hatching		57,019	56,499	99
Egg-Type Hatching		2,841	2,780	98
Eggs per 100 Layers During Jun	Number			
All Layers		2,104	2,091	99
Table Egg Type		2,169	2,152	99
Hatching Egg Type		1,821	1,820	100
Broiler-Type Hatching		1,794	1,797	100
Egg-Type Hatching		2,358	2,304	98
Eggs Produced During Jun	Million			
All Layers		6,742	6,799	101
Table Egg Type		5,652	5,720	101
Hatching Egg Type		1,090	1,079	99
Broiler-Type Hatching		1,023	1,015	99
Egg-Type Hatching		67	64	96
Layers on Jul 1	1,000			
All Layers		320,672	325,048	101
Table Egg Type		260,547	265,906	102
Hatching Egg Type		60,125	59,142	98
Broiler-Type Hatching		57,318	56,413	98
Egg-Type Hatching		2,807	2,729	97
Eggs per 100 Layers on Jul 1	Number			
All Layers		69.8	69.6	100
Table Egg Type		72.0	71.7	100
Hatching Egg Type		60.5	60.4	100
Broiler-Type Hatching		59.7	59.6	100
Egg-Type Hatching		77.1	76.8	100
Forced Molt Layers on Jul 1	Percent			
Percent Being Molted		5.5	4.8	87
Percent with Molt Completed		22.1	21.9	99
Layers Sold for Slaughter During Jun	1,000	17,607	16,903	96
Layers Rendered, Died, Destroyed, Composted or Disappeared For Any Reason During Jun	1,000	3,900	4,226	108
Pullets Less Than 20 Weeks of Age, Jul 1	1,000	99,662	100,129	100
Pullets Added During Jun <sup>1</sup>	1,000	23,263	23,078	99

<sup>1</sup> Pullet chicks one day old added to pullet flocks.

**Layers and Eggs: Layers on Hand and Eggs Produced by Type,  
and Forced Molt, United States, July-August 1999-00**

Item	Unit	1999 <sup>1</sup>	2000	2000 as % of 1999
Layers During Jul	1,000			
All Layers		319,811	325,670	102
Table Egg Type		260,259	266,583	102
Hatching Egg Type		59,552	59,087	99
Broiler-Type Hatching		56,742	56,339	99
Egg-Type Hatching		2,810	2,748	98
Eggs per 100 Layers During Jul	Number			
All Layers		2,158	2,167	100
Table Egg Type		2,227	2,233	100
Hatching Egg Type		1,857	1,868	101
Broiler-Type Hatching		1,831	1,845	101
Egg-Type Hatching		2,384	2,368	99
Eggs Produced During Jul	Million			
All Layers		6,903	7,056	102
Table Egg Type		5,797	5,952	103
Hatching Egg Type		1,106	1,104	100
Broiler-Type Hatching		1,039	1,039	100
Egg-Type Hatching		67	65	97
Layers on Aug 1	1,000			
All Layers		318,944	326,288	102
Table Egg Type		259,992	267,258	103
Hatching Egg Type		58,952	59,030	100
Broiler-Type Hatching		56,149	56,264	100
Egg-Type Hatching		2,803	2,766	99
Eggs per 100 Layers on Aug 1	Number			
All Layers		69.2	70.0	101
Table Egg Type		71.4	72.2	101
Hatching Egg Type		59.4	60.2	101
Broiler-Type Hatching		58.5	59.4	102
Egg-Type Hatching		76.0	75.9	100
Forced Molt Layers, Aug 1	Percent			
Percent Being Molted		4.6	4.3	93
Percent with Molt Completed		23.0	21.8	95
Layers Sold for Slaughter During Jul	1,000	18,080	15,988	88
Layers Rendered, Died, Destroyed, Composted or Disappeared For Any Reason During Jul	1,000	5,376	4,242	79
Pullets Less Than 20 Weeks of Age, Aug 1	1,000	99,815	99,364	100
Pullets Added During Jul <sup>2</sup>	1,000	22,724	22,840	101

<sup>1</sup> Revised.

<sup>2</sup> Pullet chicks one day old added to pullet flocks.

**Layers and Eggs: Layers on Hand and Eggs Produced by Type, and Forced  
Molt, 30 Selected States, June-July, 1999-00 <sup>1</sup>**

Item	Unit	1999	2000	2000 as % of 1999
Layers During Jun	1,000			
All Layers		301,919	305,253	101
Table Egg Type		246,561	250,775	102
Hatching Egg Type		55,358	54,478	98
Broiler-Type Hatching		52,631	51,791	98
Egg-Type Hatching		2,727	2,687	99
Eggs per 100 Layers During Jun	Number			
All Layers		2,104	2,089	99
Table Egg Type		2,168	2,150	99
Hatching Egg Type		1,821	1,808	99
Broiler-Type Hatching		1,794	1,782	99
Egg-Type Hatching		2,347	2,307	98
Eggs Produced During Jun	Million			
All Layers		6,353	6,376	100
Table Egg Type		5,345	5,391	101
Hatching Egg Type		1,008	985	98
Broiler-Type Hatching		944	923	98
Egg-Type Hatching		64	62	97
Layers on Jul 1	1,000			
All Layers		302,000	305,145	101
Table Egg Type		246,387	250,851	102
Hatching Egg Type		55,613	54,294	98
Broiler-Type Hatching		52,924	51,664	98
Egg-Type Hatching		2,689	2,630	98
Eggs per 100 Layers on Jul 1	Number			
All Layers		70.1	69.5	99
Table Egg Type		72.2	71.6	99
Hatching Egg Type		60.7	59.9	99
Broiler-Type Hatching		59.8	59.0	99
Egg-Type Hatching		77.5	76.5	99
Forced Molt Layers on Jul 1	Percent			
Percent Being Molted		5.5	4.7	85
Percent with Molt Completed		22.3	21.8	98
Layers Sold for Slaughter During Jun	1,000	16,816	15,869	94
Layers Rendered, Died, Destroyed, Composted or Disappeared For Any Reason During Jun	1,000	3,724	4,207	113
Pullets Less Than 20 Weeks of Age, Jul 1	1,000	93,912	94,032	100
Pullets Added During Jun <sup>2</sup>	1,000	22,086	22,141	100

<sup>1</sup> The 30 States are listed in the table on page 8.

<sup>2</sup> Pullet chicks one day old added to pullet flocks.

**Layers and Eggs: Layers on Hand and Eggs Produced by Type, and Forced Molt, 30 Selected States, July-August, 1999-00 <sup>1</sup>**

Item	Unit	1999 <sup>2</sup>	2000	2000 as % of 1999
Layers During Jul	1,000			
All Layers		300,958	305,694	102
Table Egg Type		245,954	251,501	102
Hatching Egg Type		55,004	54,193	99
Broiler-Type Hatching		52,313	51,533	99
Egg-Type Hatching		2,691	2,660	99
Eggs per 100 Layers During Jul	1,000			
All Layers		2,158	2,169	101
Table Egg Type		2,225	2,235	100
Hatching Egg Type		1,860	1,862	100
Broiler-Type Hatching		1,833	1,836	100
Egg-Type Hatching		2,378	2,368	100
Eggs Produced During Jul	Million			
All Layers		6,495	6,631	102
Table Egg Type		5,472	5,622	103
Hatching Egg Type		1,023	1,009	99
Broiler-Type Hatching		959	946	99
Egg-Type Hatching		64	63	98
Layers on Aug 1	1,000			
All Layers		299,880	306,211	102
Table Egg Type		245,506	252,136	103
Hatching Egg Type		54,374	54,075	99
Broiler-Type Hatching		51,688	51,394	99
Egg-Type Hatching		2,686	2,681	100
Eggs per 100 Layers on Aug 1	Number			
All Layers		69.1	70.3	102
Table Egg Type		71.3	72.6	102
Hatching Egg Type		59.5	59.7	100
Broiler-Type Hatching		58.6	58.9	101
Egg-Type Hatching		75.8	75.7	100
Forced Molt Layers, Aug 1	Percent			
Percent Being Molted		4.7	4.2	89
Percent with Molt Completed		23.2	21.7	94
Layers Sold for Slaughter During Jul	1,000	17,545	14,827	85
Layers Rendered, Died, Destroyed, Composted or Disappeared For Any Reason During Jul	1,000	5,106	3,930	77
Pullets Less Than 20 Weeks of Age, Aug 1	1,000	94,115	93,389	99
Pullets Added During Jul <sup>3</sup>	1,000	21,936	21,535	98

<sup>1</sup> The 30 States are listed in the table on page 8.

<sup>2</sup> Revised.

<sup>3</sup> Pullet chicks one day old added to pullet flocks.

**Layers and Eggs: Layers on Hand and Eggs Produced by State  
and United States, During June 1999-00**

State	Table Egg Layers in Flocks 30,000 and Above		All Layers <sup>1</sup>		Eggs per 100 for All Layers <sup>1</sup>	
	1999	2000	1999	2000	1999	2000
	<i>1,000</i>	<i>1,000</i>	<i>1,000</i>	<i>1,000</i>	<i>Number</i>	<i>Number</i>
AL	3,558	2,779	10,703	10,426	1,897	1,842
AR	4,657	5,012	15,165	15,269	1,886	1,912
CA	24,340	23,133	25,048	23,735	2,124	2,111
CO	2,866	3,304	3,412	3,786	2,140	2,192
CT	2,799	2,991	3,006	3,125	2,129	2,208
FL	9,649	9,470	10,349	10,138	2,068	2,062
GA	11,238	11,487	20,976	20,480	1,988	1,963
HI	593	585	622	610	2,010	1,934
IL	2,932	3,286	3,180	3,552	2,327	2,111
IN	21,374	21,979	22,117	22,643	2,211	2,217
IA	24,642	27,028	25,596	27,863	2,141	2,232
ME	4,465	4,121	4,577	4,187	2,294	2,142
MD	2,946	2,866	3,352	3,266	2,118	1,929
MI	5,519	6,046	5,799	6,325	2,019	2,073
MN	11,673	11,905	12,373	12,631	2,093	2,161
MS	1,460	1,755	6,598	6,747	1,895	1,927
MO	4,951	4,981	6,319	6,254	2,231	2,175
NE	11,107	11,902	11,257	12,052	2,088	1,975
NY	3,268	3,704	3,531	3,913	2,294	2,300
NC	3,412	3,237	11,259	11,151	1,865	1,811
OH	29,702	30,279	30,418	30,972	2,239	2,137
OK	1,977	1,952	4,155	4,068	1,925	1,893
OR	2,645	2,717	2,814	2,887	2,239	2,182
PA	21,052	20,944	22,437	22,491	2,179	2,210
SC	4,073	4,122	5,139	5,126	2,082	1,970
SD	1,968	1,933	2,218	2,193	2,209	2,234
TX	13,303	12,527	17,395	16,749	2,098	2,078
VA	1,520	1,393	3,654	3,388	1,998	2,037
WA	4,567	4,834	4,687	4,954	2,249	2,229
WI	3,272	3,622	3,763	4,272	2,206	2,060
30 Sts	241,528	245,894	301,919	305,253	2,104	2,089
Oth Sts <sup>2</sup>	12,974	14,049	18,522	19,897	2,100	2,151
US	254,502	259,930	320,441	325,121	2,104	2,091

<sup>1</sup> Includes all layers and eggs produced in both table egg and hatching egg flocks regardless of size.

<sup>2</sup> Estimates for individual States are not available.



**Layers and Eggs: Layers on Hand and Eggs Produced by State  
and United States, During July 1999-00**

State	Table Egg Layers in Flocks 30,000 and Above		All Layers <sup>1</sup>		Eggs per 100 for All Layers <sup>1</sup>	
	1999	2000	1999	2000	1999	2000
	<i>1,000</i>	<i>1,000</i>	<i>1,000</i>	<i>1,000</i>	<i>Number</i>	<i>Number</i>
AL	3,499	2,881	10,749	10,575	1,926	1,891
AR	4,967	4,956	15,466	15,162	1,920	1,972
CA	23,979	23,035	24,672	23,661	2,197	2,210
CO	2,908	3,206	3,448	3,632	2,175	2,313
CT	2,801	3,088	2,982	3,222	2,314	2,328
FL	9,621	9,523	10,347	10,165	2,146	2,174
GA	11,032	11,887	20,742	20,986	2,044	2,035
HI	575	580	604	603	2,020	2,023
IL	2,839	3,376	3,080	3,655	2,338	2,161
IN	21,248	21,884	21,989	22,567	2,274	2,282
IA	24,952	26,831	25,935	27,634	2,155	2,294
ME	4,424	4,243	4,537	4,314	2,336	2,174
MD	2,760	2,614	3,127	3,003	2,175	1,998
MI	5,582	6,100	5,863	6,379	2,219	2,228
MN	11,590	11,903	12,270	12,621	2,184	2,179
MS	1,560	1,713	6,686	6,606	1,944	2,013
MO	4,744	4,918	6,094	6,188	2,199	2,262
NE	11,104	11,921	11,254	12,071	2,133	2,063
NY	3,267	3,722	3,514	3,919	2,362	2,424
NC	3,508	3,160	11,236	10,980	1,913	1,867
OH	29,749	30,494	30,448	31,178	2,246	2,268
OK	1,975	1,956	4,111	4,040	1,946	1,955
OR	2,681	2,736	2,846	2,908	2,319	2,235
PA	21,086	21,517	22,462	23,061	2,239	2,294
SC	3,920	4,193	4,968	5,177	2,134	2,028
SD	1,940	1,938	2,190	2,198	2,329	2,229
TX	13,052	12,216	17,071	16,426	2,185	2,161
VA	1,572	1,503	3,674	3,465	2,096	2,020
WA	4,606	4,792	4,726	4,912	2,336	2,329
WI	3,378	3,738	3,867	4,386	2,353	2,189
30 Sts	240,919	246,624	300,958	305,694	2,158	2,169
Oth Sts <sup>2</sup>	13,259	14,061	18,853	19,996	2,164	2,195
US	254,178	260,675	319,811	325,670	2,158	2,167

<sup>1</sup> Includes all layers and eggs produced in both table egg and hatching egg flocks regardless of size.

<sup>2</sup> Estimates for individual States are not available.

**Egg Production: By Type, State, and United States,  
June 1999-00**

State	Total Production		Table Eggs <sup>1</sup>		Hatching Eggs <sup>1</sup>	
	1999	2000	1999	2000	1999	2000
	<i>Million Eggs</i>	<i>Million Eggs</i>	<i>Million Eggs</i>	<i>Million Eggs</i>	<i>Million Eggs</i>	<i>Million Eggs</i>
AL	203	192	77	59	126	133
AR	286	292	101	110	185	182
CA	532	501				
CO	73	83				
CT	64	69				
FL	214	209	202	197	12	12
GA	417	402	232	230	185	172
HI	12.5	11.8	12.5	11.8	0	0
IL	74	75	70	71	4	4
IN	489	502	477	490	12	12
IA	548	622				
ME	105	90				
MD	71	63	65	57	6	6
MI	117	131				
MN	259	273	249	263	10	10
MS	125	130	33	41	92	89
MO	141	136				
NE	235	238	235	238	0	0
NY	81	90				
NC	210	202	77	76	133	126
OH	681	662				
OK	80	77	44	44	36	33
OR	63	63	62	62	1	1
PA	489	497	472	477	17	20
SC	107	101	89	83	18	18
SD	49	49	49	49	0	0
TX	365	348				
VA	73	69	35	32	38	37
WA	105	110				
WI	83	88				
30 Sts	6,353	6,376	5,345	5,391	1,008	985
Oth Sts <sup>2</sup>	389	428	307	333	82	95
US	6,742	6,799	5,652	5,720	1,090	1,079

<sup>1</sup> Data by type of flock not shown for some States to avoid disclosing individual operations.

<sup>2</sup> Estimates for individual States are not available.

**Egg Production: By Type, State, and United States,  
July 1999-00**

State	Total Production		Table Eggs <sup>1</sup>		Hatching Eggs <sup>1</sup>	
	1999	2000	1999	2000	1999	2000
	<i>Million Eggs</i>	<i>Million Eggs</i>	<i>Million Eggs</i>	<i>Million Eggs</i>	<i>Million Eggs</i>	<i>Million Eggs</i>
AL	207	200	77	62	130	138
AR	297	299	108	114	189	185
CA	542	523				
CO	75	84				
CT	69	75				
FL	222	221	209	209	13	12
GA	424	427	235	249	189	178
HI	12.2	12.2	12.2	12.2	0	0
IL	72	79	68	75	4	4
IN	500	515	487	502	13	13
IA	559	634				
ME	106	94				
MD	68	60	62	54	6	6
MI	130	142				
MN	268	275	258	265	10	10
MS	130	133	36	42	94	91
MO	134	140				
NE	240	249	240	249	0	0
NY	83	95				
NC	215	205	81	78	134	127
OH	684	707				
OK	80	79	45	45	35	34
OR	66	65	65	64	1	1
PA	503	529	487	508	16	21
SC	106	105	88	87	18	18
SD	51	49	51	49	0	0
TX	373	355				
VA	77	70	38	34	39	36
WA	110	114				
WI	91	96				
30 Sts	6,495	6,631	5,472	5,622	1,023	1,009
Oth Sts <sup>2</sup>	408	439	325	338	83	101
US	6,903	7,056	5,797	5,952	1,106	1,104

<sup>1</sup> Data by type of flock not shown for some States to avoid disclosing individual operations.

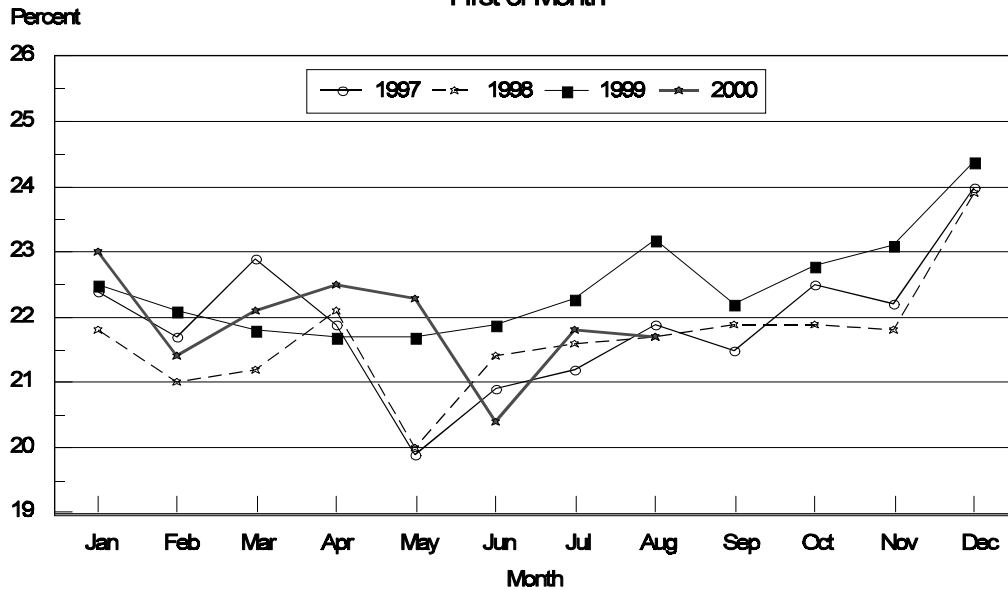
<sup>2</sup> Estimates for individual States are not available.

**Forced Molt: Percent of All Layers by Month,  
United States, 1999-00<sup>1</sup>**

Month	Percent Being Molted		Percent with Molt Completed	
	1999	2000	1999	2000
	<i>Percent</i>	<i>Percent</i>	<i>Percent</i>	<i>Percent</i>
Jan	4.1	2.9	22.5	22.9
Feb	4.9	5.0	22.1	21.4
Mar	3.3	3.7	21.8	22.1
Apr	2.8	2.2	21.7	22.5
May	5.6	4.0	21.7	22.3
Jun	5.2	5.8	21.9	20.4
Jul	5.5	4.8	22.1	21.9
Aug	4.6	4.3	23.0	21.8
Sep	4.3		22.2	
Oct	4.2		22.8	
Nov	3.6		23.1	
Dec	2.0		24.4	

<sup>1</sup> As of first of month.

**All Layers: United States  
Percent Molt Completed, 1997 - 2000  
First of Month**



**Forced Molt: Percent of All Layers by State  
and United States, August 1999-00 <sup>1</sup>**

State	Percent Being Molted		Percent with Molt Completed	
	1999	2000	1999	2000
	<i>Percent</i>	<i>Percent</i>	<i>Percent</i>	<i>Percent</i>
AL	2.5	0.5	11.0	9.0
AR	2.5	2.0	11.5	10.0
CA	10.0	6.0	42.5	39.5
CO	1.5	1.5	26.5	20.0
CT	0.0	0.0	9.0	15.0
FL	7.0	6.0	39.0	31.0
GA	6.0	5.0	14.5	18.5
HI	9.0	6.5	45.5	54.0
IL	2.5	13.0	29.0	27.5
IN	1.0	5.0	29.5	23.5
IA	7.0	4.0	30.0	27.5
ME	0.0	0.0	0.0	0.0
MD	9.0	0.0	38.5	34.0
MI	2.5	2.5	28.5	26.5
MN	6.0	1.5	34.0	29.0
MS	2.0	1.0	12.5	7.5
MO	14.5	0.0	16.5	21.5
NE	8.0	7.5	25.5	24.0
NY	3.5	1.0	3.0	7.0
NC	1.5	0.5	9.0	8.5
OH	2.0	9.0	15.5	13.5
OK	1.0	1.0	8.0	9.0
OR	2.5	4.0	29.5	32.5
PA	6.5	2.5	20.0	21.0
SC	7.0	3.0	22.5	36.5
SD	4.5	2.0	31.5	27.0
TX	3.0	1.5	24.5	18.5
VA	4.0	8.5	10.5	15.5
WA	4.0	6.0	44.5	42.5
WI	1.0	12.5	22.5	25.5
30 Sts	4.7	4.2	23.2	21.7
Oth Sts <sup>2</sup>	3.1	6.6	20.1	23.6
US	4.6	4.3	23.0	21.8

<sup>1</sup> As of first of month.

<sup>2</sup> Estimates for individual States are not available.

**Hatchery Production: Eggs in Incubators, Chicks Hatched,  
and Placements by Type, United States, July-August 1999-00**

Item	1999	2000	2000 as % of 1999
	<i>1,000</i>	<i>1,000</i>	<i>Percent</i>
<b>Egg-Type</b>			
Eggs in Incubators on Aug 1	29,354	29,953	102
Chicks Hatched During Jul	34,275	33,091	97
Chicks Hatched Jan thru Jul	271,206	256,342	95
Pullets Hatched During Jul for Intended Placements in Hatchery Supply Flocks	231	352	152
7-18 Month Earlier <sup>1</sup>	3,108	2,937	94
<b>Broiler-Type</b>			
Eggs in Incubators on Aug 1	626,501	614,200	98
Chicks Hatched During Jul	751,627	739,892	98
Chicks Hatched Jan thru Jul	5,151,331	5,213,290	101
Pullets Hatched During Jul for Intended Placements in Hatchery Supply Flocks	7,088	6,310	89
7-15 Months Earlier <sup>2</sup>	63,005	64,536	102

<sup>1</sup> 2000 includes pullet chicks hatched Jan 1999 through Dec 1999.

<sup>2</sup> 2000 includes pullet chicks hatched Apr 1999 through Dec 1999.

**Egg-Type Eggs in Incubators: By Region and United States,  
August 1, 1999-00**

Geographic Division	1999	2000	2000 as % of 1999
	<i>1,000</i>	<i>1,000</i>	<i>Percent</i>
North Atlantic	4,963	5,954	120
E North Central	7,943	5,927	75
W North Central	4,700	6,681	142
South Atlantic	2,938	3,402	116
South Central	4,394	3,982	91
West	4,416	4,007	91
US	29,354	29,953	102

Regional Listing:

North Atlantic = CT, ME, MA, NH, NJ, NY, PA, RI, VT.

E North Central = IL, IN, MI, OH, WI.

W North Central = IA, KS, MN, MO, NE, ND, SD.

South Atlantic = DE, FL, GA, MD, NC, SC, VA, WV.

South Central = AL, AR, KY, LA, MS, OK, TN, TX.

West = AK, AZ, CA, CO, HI, ID, MT, NM, NV, OR, UT, WA, WY.

**Egg-Type Chicks Hatched: By State and United States,  
July 1999-00**

State	July			Jan-Jul		
	1999	2000	2000 as % of 1999	1999	2000	2000 as % of 1999
	<i>1,000</i>	<i>1,000</i>	<i>Percent</i>	<i>1,000</i>	<i>1,000</i>	<i>Percent</i>
AR	773	920	119	5,667	5,415	96
FL	1,060	1,010	95	7,562	7,149	95
GA	1,708	1,587	93	13,777	13,217	96
IN	5,675	4,782	84	50,721	41,929	83
IA	3,948	5,593	142	34,758	39,413	113
KS	212	326	154	2,230	1,964	88
MN	1,637	1,652	101	13,314	12,790	96
MO	336	336	100	2,499	2,499	100
PA	4,918	4,772	97	39,190	36,134	92
Oth Sts <sup>1</sup>	14,008	12,113	86	101,488	95,832	94
US	34,275	33,091	97	271,206	256,342	95

<sup>1</sup> Not published separately to avoid disclosing data for individual operations.

**Egg-Type Chicks Hatched: By Month, United States, 1998-00**

Month	By Months				Cumulative			
	1998	1999	2000	2000 as % of 1999	1998	1999	2000	2000 as % of 1999
	<i>1,000</i>	<i>1,000</i>	<i>1,000</i>	<i>Percent</i>	<i>1,000</i>	<i>1,000</i>	<i>1,000</i>	<i>Percent</i>
Jan	37,168	35,242	34,125	97	37,168	35,242	34,125	97
Feb	34,597	36,367	35,491	98	71,765	71,609	69,616	97
Mar	40,604	41,172	39,560	96	112,369	112,781	109,176	97
Apr	39,057	41,950	36,621	87	151,426	154,731	145,797	94
May	39,206	40,726	40,879	100	190,632	195,457	186,676	96
Jun	39,323	41,474	36,575	88	229,955	236,931	223,251	94
Jul	35,576	34,275	33,091	97	265,531	271,206	256,342	95
Aug	33,398	35,454			298,929	306,660		
Sep	37,959	39,287			336,888	345,947		
Oct	34,667	39,044			371,555	384,991		
Nov	31,217	32,892			402,772	417,883		
Dec	35,501	33,045			438,273	450,928		

**Intended Placements: Egg-Type Pullet Chicks for Hatchery Supply  
Flocks by Month and Total, United States, 1998-00<sup>1</sup>**

Month	Pullet Chicks Hatched			2000 as % of 1999	Cumulative Potential Placements Relative to Current Supply Flocks 7-18 Months Earlier <sup>2</sup>		
	1998	1999	2000		1999	2000	2001
	<i>1,000</i>	<i>1,000</i>	<i>1,000</i>	<i>Percent</i>	<i>1,000</i>	<i>1,000</i>	<i>1,000</i>
Jan	189	166	212	128	3,029	3,012	3,114
Feb	250	267	251	94	3,120	2,945	3,235
Mar	225	257	286	111	3,020	3,078	
Apr	333	287	309	108	2,942	2,981	
May	192	283	343	121	3,044	2,900	
Jun	354	187	223	119	3,132	2,945	
Jul	298	231	352	152	3,108	2,937	
Aug	185	318			3,085	2,983	
Sep	324	227			3,102	2,967	
Oct	358	277			3,134	2,996	
Nov	217	262			3,088	3,018	
Dec	183	175			3,179	3,078	
Total	3,108	2,937					

<sup>1</sup> Reported by leading breeders. Coverage may not be 100 percent. Includes expected pullet chicks from eggs sold during the preceding month at the rate of 125 pullet chicks per 30 dozen case of eggs.

<sup>2</sup> For July 2000, includes breeder pullet chicks hatched Jan 1999 through Dec 1999. The 7-18 months represent the first laying cycle. Molting and additional laying cycles will increase the cumulative potential placements.

**Broiler-Type Eggs in Incubators: By Region  
and United States, August 1, 1999-00**

Geographic Division	1999	2000	2000 as % of 1999
	<i>1,000</i>	<i>1,000</i>	<i>Percent</i>
North Atlantic	11,876	11,572	97
E North Central	8,903	7,903	89
W North Central	22,363	20,010	89
South Atlantic	236,703	229,378	97
South Central	322,450	322,575	100
West	24,206	22,762	94
US	626,501	614,200	98



**Broiler-Type Chicks Hatched: By State  
and United States, July 1999-00**

State	July			Jan-Jul		
	1999	2000	2000 as % of 1999	1999	2000	2000 as % of 1999
	<i>1,000</i>	<i>1,000</i>	<i>Percent</i>	<i>1,000</i>	<i>1,000</i>	<i>Percent</i>
AL	98,986	102,003	103	673,573	717,681	107
AR	109,626	110,177	101	754,633	762,870	101
DE	16,467	15,114	92	111,248	107,124	96
FL	9,986	9,822	98	68,641	67,886	99
GA	113,234	109,013	96	776,443	776,306	100
MD	31,801	31,310	98	217,551	213,883	98
MS	66,012	65,099	99	451,324	456,652	101
NC	64,124	63,718	99	441,990	443,682	100
PA	13,306	12,808	96	90,246	90,140	100
SC	17,130	16,957	99	114,524	117,142	102
TX	48,791	50,721	104	336,742	362,762	108
VA	24,502	24,191	99	167,580	167,269	100
CA TN & WV	41,637	40,894	98	280,749	282,445	101
15 Sts <sup>1</sup>	655,602	651,827	99	4,485,244	4,565,842	102
Oth Sts <sup>2</sup>	96,025	88,065	92	666,087	647,448	97
US	751,627	739,892	98	5,151,331	5,213,290	101

<sup>1</sup> States in the weekly hatchery production estimating program.

<sup>2</sup> Not published separately to avoid disclosing data for individual operations.

**Broiler Chicks Hatched: By Month, United States, 1998-00**

Month	By Months				Cumulative			
	1998	1999	2000	2000 as % of 1999	1998	1999	2000	2000 as % of 1999
	<i>1,000</i>	<i>1,000</i>	<i>1,000</i>	<i>Percent</i>	<i>1,000</i>	<i>1,000</i>	<i>1,000</i>	<i>Percent</i>
Jan	711,373	735,768	749,375	102	711,373	735,768	749,375	102
Feb	645,180	662,604	700,967	106	1,356,553	1,398,372	1,450,342	104
Mar	730,316	755,804	756,351	100	2,086,869	2,154,176	2,206,693	102
Apr	708,260	734,734	743,516	101	2,795,129	2,888,910	2,950,209	102
May	739,319	766,422	775,181	101	3,534,448	3,655,332	3,725,390	102
Jun	717,967	744,372	748,008	100	4,252,415	4,399,704	4,473,398	102
Jul	722,715	751,627	739,892	98	4,975,130	5,151,331	5,213,290	101
Aug	715,650	741,716			5,690,780	5,893,047		
Sep	695,281	700,016			6,386,061	6,593,063		
Oct	693,204	697,434			7,079,265	7,290,497		
Nov	674,851	676,769			7,754,116	7,967,266		
Dec	737,822	748,438			8,491,938	8,715,704		

**Intended Placements: Broiler-Type Pullet Chicks for Hatchery  
Supply Flocks by Month and Total, 1998-00 <sup>1</sup>**

Month	Pullet Chicks Hatched			2000 as % of 1999	Cumulative Potential Placements Relative to Current Supply Flocks 7-15 Months Earlier <sup>2</sup>		
	1998	1999	2000		1999	2000	2001
	<i>1,000</i>	<i>1,000</i>	<i>1,000</i>	<i>Percent</i>	<i>1,000</i>	<i>1,000</i>	<i>1,000</i>
US Place- ments							
Jan	6,765	7,059	6,861	97	59,403	64,139	63,298
Feb	6,328	6,882	7,001	102	59,937	64,344	62,487
Mar	6,776	7,284	7,310	100	60,699	64,697	
Apr	6,687	7,038	6,764	96	61,775	64,663	
May	7,062	7,736	7,435	96	61,893	64,725	
Jun	6,932	7,041	6,829	97	62,877	64,827	
Jul	6,788	7,088	6,310	89	63,005	64,536	
Aug	7,109	7,665			63,377	64,359	
Sep	7,328	6,870			63,197	63,624	
Oct	6,883	7,121			63,549	63,893	
Nov	7,312	6,984			63,799	63,569	
Dec	6,904	6,993			64,426	63,339	
Annual Total	82,874	85,761					
Total Place- ments <sup>3</sup>							
Jan	8,613	8,679	8,069	93			
Feb	8,273	8,473	8,302	98			
Mar	8,760	8,863	8,798	99			
Apr	8,300	8,572	8,522	99			
May	8,957	9,463	8,917	94			
Jun	8,757	8,333	8,201	98			
Jul	8,423	8,342	7,621	91			
Aug	8,686	8,983					
Sep	8,985	8,044					
Oct	8,756	8,223					
Nov	9,412	8,220					
Dec	8,830	8,299					
Annual Total	104,752	102,494					

<sup>1</sup> Reported by leading breeders. Coverage may not be 100 percent. Includes expected pullet chicks from eggs sold during the preceding month at the rate of 125 pullet chicks per 30 dozen case of eggs.

<sup>2</sup> For Jul 2000, includes breeder pullet chicks hatched Apr 1999 through Dec 1999.

<sup>3</sup> U.S. production of intended placements worldwide.

## Procedures and Reliability

**Data Sources:** Primary data for the "**Chickens and Eggs**" report are from weekly and/or monthly questionnaires sent to producers. An attempt is made to collect information for layer and egg estimates from each known contractor and independent producer who has over 30,000 table egg layers. Coverage for operations with less than 30,000 table egg layers are estimated each month based on data reported in December. Approximately 900 contractors, independent egg producers, and started pullet operations are contacted each month. All known hatcheries, approximately 330, are contacted for information on a weekly and/or monthly basis.

**Revisions:** The previous month's estimates are subject to revision if late reports or corrected data indicates a different level. Additionally, revisions needed after the monthly report will be made at the end of the marketing year and published in the annual summaries of "**Chickens and Eggs Summary**" and "**Hatchery Production**".

**Procedures and Reliability:** Operations are mailed a questionnaire and given adequate time to respond by mail. Those that do not respond are phoned. Great care is exercised to ensure that all operations are accounted for during each survey period. However, there are usually missing reports that must be accounted for in the estimates.

Sound statistical methodology is employed to derive estimates from the reported data. All data are checked for unusual values. All operations' data are compared to their own past operating profiles and also to trends from other operations. Data for missing operations are estimated based on similar operations or historical data. Survey data are subject to non-sampling errors such as omissions and mistakes in reporting and in processing. While these errors cannot be measured directly, they are minimized by reviewing all data for consistency and reasonableness.

Egg-type chicks hatched are comprised of all chicks of egg-type domesticated breeds including males and chicks destined for hatchery supply flocks and research purposes. The relationship of chicks hatched to chicken inventory and poultry marketings is carefully monitored. The disposition of egg-type chicks hatched prior to placement into the laying flock can vary significantly, which can make comparisons to changes in layer inventory inconsistent over time.

Intended placement data reported by leading breeders include pullet chicks expected from eggs sold the preceding month. The breeders in this report account for a large percentage of replacement pullets for hatchery supply flocks. Production of replacement pullets by these breeders indicates the number of pullets available to hatchery egg supply flocks several months before the pullets will actually move into the flocks. Beginning with the January 1996 publication the broiler-type cumulative potential placements went from 7-14 months earlier to 7-15 months earlier. The egg-type cumulative potential placements of 7-18 months represent the first laying cycle. Molting and additional laying cycles will increase the cumulative potential placements of egg-type hatching flocks.

The next "Chickens and Eggs" report will be released at 3 p.m. on September 22, 2000.

The United States Department of Agriculture (USDA) prohibits discrimination in all its programs on the basis of race, color, national origin, gender, religion, age, disability, political beliefs, sexual orientation, and marital or family status. (Not all prohibited bases apply to all programs.) Persons with disabilities who require alternative means for communication of program information (braille, large print, audiotape, etc.) should contact the USDA's TARGET Center at 202-720-2600 (voice and TDD).

To file a complaint of discrimination, write USDA, Director, Office of Civil Rights, Room 326-W, Whitten Building, 14th and Independence Avenue, SW, Washington, D.C., 20250-9410, or call 202-720-5964 (voice or TDD). USDA is an equal opportunity provider and employer.

## **ACCESS TO REPORTS!!**

---

For your convenience, there are several ways to obtain NASS reports, data products, and services:

### **INTERNET ACCESS**

All NASS reports are available free of charge on the worldwide Internet. For access, connect to the Internet and go to the NASS Home Page at: <http://www.usda.gov/nass/>. Select "Today's Reports" or Publications and then Reports by Calendar or Publications and then Search, by Title or Subject.

### **E-MAIL SUBSCRIPTION**

There are two options for subscribing via e-mail. All NASS reports are available by subscription free of charge direct to your e-mail address. 1) Starting with the NASS Home Page at <http://www.usda.gov/nass/>, click on **Publications**, then click on the **Subscribe by E-mail** button which takes you to the page describing e-mail delivery of reports. Finally, click on **Go to the Subscription Page** and follow the instructions. 2) If you do NOT have Internet access, send an e-mail message to: [usda-reports@usda.mannlib.cornell.edu](mailto:usda-reports@usda.mannlib.cornell.edu). In the body of the message type the word: **list**.

### **AUTOFAX ACCESS**

NASSFax service is available for some reports from your fax machine. Please call 202-720-2000, using the handset attached to your fax. Respond to the voice prompts. Document 0411 is a list of available reports.

-----

### **PRINTED REPORTS OR DATA PRODUCTS**

**CALL OUR TOLL-FREE ORDER DESK: 800-999-6779 (U.S. and Canada)**  
**Other areas, please call 703-834-0125      FAX: 703-834-0110**  
**(Visa, MasterCard, check, or money order acceptable for payment.)**

-----

### **ASSISTANCE**

For **assistance** with general agricultural statistics or further information about NASS or its products or services, contact the **Agricultural Statistics Hotline** at **800-727-9540**, 7:30 a.m. to 4:00 p.m. ET, or e-mail: [nass@nass.usda.gov](mailto:nass@nass.usda.gov).

USDA to Hold Public Forum  
October 16, 2000

Holiday Inn Mart Plaza  
Chicago, Illinois

The National Agricultural Statistics Service will be organizing an open forum for Data Users. The purpose will be to provide updates on pending changes in the various statistical and information programs, and to seek comments and input from data users. The other USDA agencies to be represented will include the Agricultural Marketing Service, the Economic Research Service, the Foreign Agricultural Service, and the World Agricultural Outlook Board. The Foreign Trade Division from the Census Bureau and The National Weather Service will also be included in the meeting.

For registration details, see the NASS home page at <http://www.usda.gov/nass/> or contact Karlyn McCutcheon (NASS) at (202) 690-8141 or at [hq\\_dapp@nass.usda.gov](mailto:hq_dapp@nass.usda.gov)