

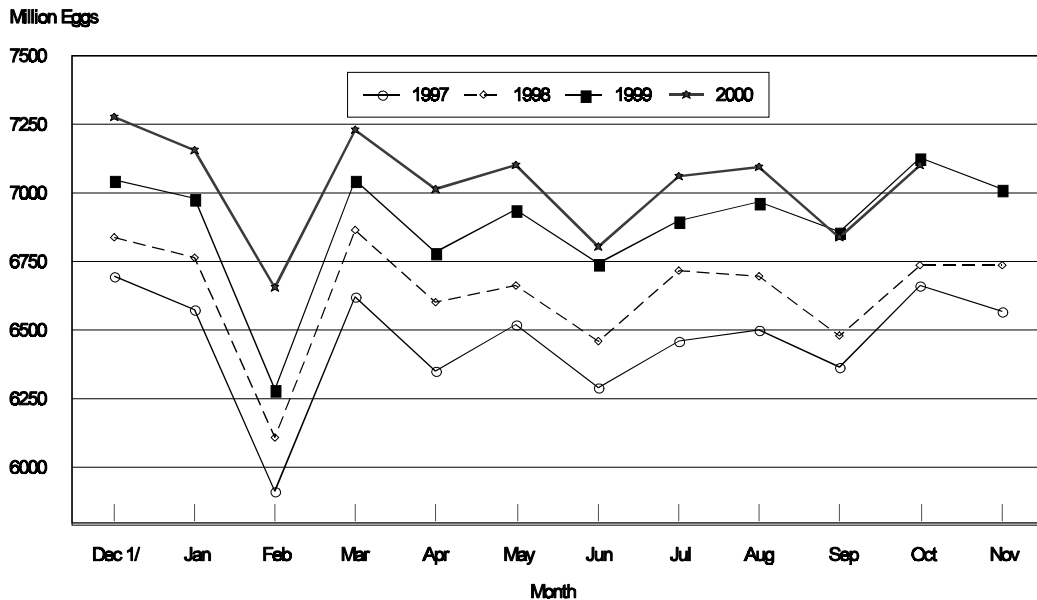
Released November 21, 2000, by the National Agricultural Statistics Service (NASS), Agricultural Statistics Board, U.S. Department of Agriculture. For information on "Chickens and Eggs" call Tom Kruchten at (202) 690-4870. For information on Hatch call Jody Robert at (202) 690-8632, office hours 7:30 a.m. to 4:00 p.m. ET.

## October Egg Production Down Slightly

U.S. egg production totaled 7.11 billion during October 2000, down slightly from the 7.13 billion produced in 1999. Production included 6.04 billion table eggs and 1.07 billion hatching eggs, of which 1.01 billion were broiler-type and 60.0 million were egg-type. The total number of layers during October 2000 averaged 327 million, up 1 percent from the total average number of layers during October 1999. October egg production per 100 layers was 2,172 eggs, down 1 percent from 2,192 eggs in October 1999.

October 2000 contained 22 weekdays and four Saturdays, compared to 21 weekdays and five Saturdays in October 1999.

**All Egg Production By Months**  
United States, 1997 - 2000



1/ Previous Year

All layers in the U.S. on November 1, 2000, totaled 328 million, up slightly from a year ago. The 328 million layers consisted of 272 million layers producing table or commercial type eggs, 53.7 million layers producing broiler-type hatching eggs, and 2.51 million layers producing egg-type hatching eggs. Rate of lay per day on November 1, 2000, averaged 70.3 eggs per 100 layers, down 1 percent from the 70.7 eggs a year ago.

Laying flocks in the 30 major egg producing States produced 6.66 billion eggs during October, down 1 percent from October 1999. The average number of layers during October, at 307 million, was up slightly from a year earlier.

Individual State estimates are available for the 30 major egg producing States. These States are listed on page 8 of this release and account for approximately 94 percent of the total U.S. egg production. Production for the other States are grouped into an "Other States" category and combined with the 30 States published individually to obtain a U.S. estimate. Individual State estimates for "Other States" are available annually in the "**Chickens and Eggs Summary**" report.

### **Egg-Type Chicks Hatched Down 10 Percent**

Egg-type chicks **hatched** during October totaled 35.2 million, down 10 percent from October 1999. **Eggs in incubators** totaled 29 million on November 1, 2000, down 8 percent from a year ago.

Domestic placements of **egg-type pullet chicks for future hatchery supply flocks** by leading breeders totaled 283,000 during October 2000, up 2 percent from October 1999.

### **Broiler Hatch Up 2 Percent**

The October 2000 **hatch** of broiler-type chicks, at 711 million, was up 2 percent from October of the previous year. There were 563 million **eggs in incubators** on November 1, 2000, down 2 percent from a year earlier.

Leading breeders placed 6.69 million **broiler-type pullet chicks for future domestic hatchery supply flocks** during October 2000, down 6 percent from October 1999.

**All Layers: Average Number on Hand During the Month,  
United States, 1997-00**

Month	1997	1998	1999	2000
	<i>1,000 Layers</i>	<i>1,000 Layers</i>	<i>1,000 Layers</i>	<i>1,000 Layers</i>
Dec <sup>1</sup>	304,463	311,898	321,960	328,824
Jan	304,289	311,906	322,326	328,557
Feb	304,000	313,285	322,797	329,824
Mar	304,285	314,141	322,758	330,927
Apr	303,618	311,957	321,515	329,243
May	302,241	309,655	320,498	326,426
Jun	300,537	309,206	320,441	325,150
Jul	299,605	308,967	319,811	325,678
Aug	300,211	309,291	320,173	325,428
Sep	303,661	311,358	322,394	325,470
Oct	306,807	315,222	325,272	327,145
Nov	309,670	319,625	328,253	

<sup>1</sup> December preceding year.

**Eggs: Production During the Month by Type,  
United States, 1999-00**

Month	Total Eggs		Table Eggs		Hatching Eggs	
	1999	2000	1999	2000	1999	2000
	<i>Million Eggs</i>	<i>Million Eggs</i>	<i>Million Eggs</i>	<i>Million Eggs</i>	<i>Million Eggs</i>	<i>Million Eggs</i>
Dec <sup>1</sup>	7,051	7,279	5,979	6,198	1,072	1,081
Jan	6,979	7,155	5,898	6,068	1,081	1,087
Feb	6,281	6,659	5,295	5,632	986	1,027
Mar	7,052	7,235	5,943	6,111	1,109	1,124
Apr	6,784	7,013	5,708	5,911	1,076	1,102
May	6,941	7,105	5,824	5,971	1,117	1,134
Jun	6,742	6,804	5,652	5,724	1,090	1,080
Jul	6,903	7,063	5,797	5,953	1,106	1,110
Aug	6,971	7,099	5,876	6,009	1,095	1,090
Sep	6,860	6,837	5,797	5,803	1,063	1,034
Oct	7,131	7,106	6,039	6,038	1,092	1,068
Nov	7,016		5,967		1,049	
During Year	82,711	77,355	69,775	65,418	12,936	11,937

<sup>1</sup> December preceding year.

**Layers and Eggs: Layers on Hand and Eggs Produced by Type,  
and Forced Molt, United States, September-October 1999-00**

Item	Unit	1999	2000	2000 as % of 1999
Layers During Sep	1,000			
All Layers		322,394	325,470	101
Table Egg Type		264,136	268,832	102
Hatching Egg Type		58,258	56,638	97
Broiler-Type Hatching		55,554	53,909	97
Egg-Type Hatching		2,704	2,729	101
Eggs per 100 Layers During Sep	Number			
All Layers		2,128	2,101	99
Table Egg Type		2,195	2,159	98
Hatching Egg Type		1,825	1,826	100
Broiler-Type Hatching		1,804	1,805	100
Egg-Type Hatching		2,256	2,235	99
Eggs Produced During Sep	Million			
All Layers		6,860	6,837	100
Table Egg Type		5,797	5,803	100
Hatching Egg Type		1,063	1,034	97
Broiler-Type Hatching		1,002	973	97
Egg-Type Hatching		61	61	100
Layers on Oct 1	1,000			
All Layers		323,365	326,199	101
Table Egg Type		265,367	270,010	102
Hatching Egg Type		57,998	56,189	97
Broiler-Type Hatching		55,283	53,520	97
Egg-Type Hatching		2,715	2,669	98
Eggs per 100 Layers on Oct 1	Number			
All Layers		70.6	69.4	98
Table Egg Type		72.8	71.3	98
Hatching Egg Type		60.7	60.8	100
Broiler-Type Hatching		60.0	60.1	100
Egg-Type Hatching		75.9	74.7	98
Forced Molt Layers on Oct 1	Percent			
Percent Being Molted		4.2	5.7	136
Percent with Molt Completed		22.8	22.5	99
Layers Sold for Slaughter During Sep	1,000	16,877	15,015	89
Layers Rendered, Died, Destroyed, Composted or Disappeared For Any Reason During Sep	1,000	3,608	4,421	123
Pullets Less Than 20 Weeks of Age, Oct 1	1,000	96,954	94,379	97
Pullets Added During Sep <sup>1</sup>	1,000	22,123	21,638	98

<sup>1</sup> Pullet chicks one day old added to pullet flocks.

**Layers and Eggs: Layers on Hand and Eggs Produced by Type,  
and Forced Molt, United States, October-November 1999-00**

Item	Unit	1999 <sup>1</sup>	2000	2000 as % of 1999
Layers During Oct	1,000			
All Layers		325,272	327,145	101
Table Egg Type		267,321	270,928	101
Hatching Egg Type		57,951	56,217	97
Broiler-Type Hatching		55,285	53,625	97
Egg-Type Hatching		2,666	2,592	97
Eggs per 100 Layers During Oct	Number			
All Layers		2,192	2,172	99
Table Egg Type		2,259	2,229	99
Hatching Egg Type		1,884	1,900	101
Broiler-Type Hatching		1,861	1,880	101
Egg-Type Hatching		2,363	2,315	98
Eggs Produced During Oct	Million			
All Layers		7,131	7,106	100
Table Egg Type		6,039	6,038	100
Hatching Egg Type		1,092	1,068	98
Broiler-Type Hatching		1,029	1,008	98
Egg-Type Hatching		63	60	95
Layers on Nov 1	1,000			
All Layers		327,135	327,920	100
Table Egg Type		269,254	271,697	101
Hatching Egg Type		57,881	56,223	97
Broiler-Type Hatching		55,273	53,718	97
Egg-Type Hatching		2,608	2,505	96
Eggs per 100 Layers on Nov 1	Number			
All Layers		70.7	70.3	99
Table Egg Type		72.8	72.1	99
Hatching Egg Type		60.8	61.7	101
Broiler-Type Hatching		60.1	61.0	101
Egg-Type Hatching		75.4	76.3	101
Forced Molt Layers, Nov 1	Percent			
Percent Being Molted		3.6	4.0	111
Percent with Molt Completed		23.1	23.2	100
Layers Sold for Slaughter During Oct	1,000	15,318	15,290	100
Layers Rendered, Died, Destroyed, Composted or Disappeared For Any Reason During Oct	1,000	3,351	3,246	97
Pullets Less Than 20 Weeks of Age, Nov 1	1,000	96,928	93,629	97
Pullets Added During Oct <sup>2</sup>	1,000	23,619	21,465	91

<sup>1</sup> Revised.

<sup>2</sup> Pullet chicks one day old added to pullet flocks.

**Layers and Eggs: Layers on Hand and Eggs Produced by Type, and Forced Molt, 30 Selected States, September-October, 1999-00 <sup>1</sup>**

Item	Unit	1999	2000	2000 as % of 1999
Layers During Sep	1,000			
All Layers		303,046	305,384	101
Table Egg Type		249,269	253,282	102
Hatching Egg Type		53,777	52,102	97
Broiler-Type Hatching		51,173	49,481	97
Egg-Type Hatching		2,604	2,621	101
Eggs per 100 Layers During Sep	Number			
All Layers		2,127	2,097	99
Table Egg Type		2,194	2,156	98
Hatching Egg Type		1,817	1,810	100
Broiler-Type Hatching		1,794	1,787	100
Egg-Type Hatching		2,266	2,251	99
Eggs Produced During Sep	Million			
All Layers		6,445	6,404	99
Table Egg Type		5,468	5,461	100
Hatching Egg Type		977	943	97
Broiler-Type Hatching		918	884	96
Egg-Type Hatching		59	59	100
Layers on Oct 1	1,000			
All Layers		303,856	306,168	101
Table Egg Type		250,275	254,476	102
Hatching Egg Type		53,581	51,692	96
Broiler-Type Hatching		50,963	49,125	96
Egg-Type Hatching		2,618	2,567	98
Eggs per 100 Layers on Oct 1	Number			
All Layers		70.6	69.3	98
Table Egg Type		72.8	71.1	98
Hatching Egg Type		60.4	60.2	100
Broiler-Type Hatching		59.6	59.5	100
Egg-Type Hatching		76.1	74.8	98
Forced Molt Layers on Oct 1	Percent			
Percent Being Molted		4.2	5.8	138
Percent with Molt Completed		22.9	22.3	97
Layers Sold for Slaughter During Sep	1,000	16,066	14,276	89
Layers Rendered, Died, Destroyed, Composted or Disappeared For Any Reason During Sep	1,000	3,443	4,242	123
Pullets Less Than 20 Weeks of Age, Oct 1	1,000	90,963	88,423	97
Pullets Added During Sep <sup>2</sup>	1,000	20,782	20,889	101

<sup>1</sup> The 30 States are listed in the table on page 8.

<sup>2</sup> Pullet chicks one day old added to pullet flocks.

**Layers and Eggs: Layers on Hand and Eggs Produced by Type, and Forced Molt, 30 Selected States, October-November, 1999-00 <sup>1</sup>**

Item	Unit	1999 <sup>2</sup>	2000	2000 as % of 1999
Layers During Oct	1,000			
All Layers		305,746	306,936	100
Table Egg Type		252,232	255,263	101
Hatching Egg Type		53,514	51,673	97
Broiler-Type Hatching		50,942	49,180	97
Egg-Type Hatching		2,572	2,493	97
Eggs per 100 Layers During Oct	1,000			
All Layers		2,189	2,168	99
Table Egg Type		2,255	2,226	99
Hatching Egg Type		1,878	1,883	100
Broiler-Type Hatching		1,853	1,861	100
Egg-Type Hatching		2,372	2,327	98
Eggs Produced During Oct	Million			
All Layers		6,694	6,655	99
Table Egg Type		5,689	5,682	100
Hatching Egg Type		1,005	973	97
Broiler-Type Hatching		944	915	97
Egg-Type Hatching		61	58	95
Layers on Nov 1	1,000			
All Layers		307,599	307,545	100
Table Egg Type		254,172	255,910	101
Hatching Egg Type		53,427	51,635	97
Broiler-Type Hatching		50,908	49,224	97
Egg-Type Hatching		2,519	2,411	96
Eggs per 100 Layers on Nov 1	Number			
All Layers		70.5	70.5	100
Table Egg Type		72.6	72.3	100
Hatching Egg Type		60.7	61.3	101
Broiler-Type Hatching		60.0	60.6	101
Egg-Type Hatching		75.7	75.9	100
Forced Molt Layers, Nov 1	Percent			
Percent Being Molted		3.7	4.1	111
Percent with Molt Completed		23.1	23.0	100
Layers Sold for Slaughter During Oct	1,000	14,485	14,170	98
Layers Rendered, Died, Destroyed, Composted or Disappeared For Any Reason During Oct	1,000	3,185	3,113	98
Pullets Less Than 20 Weeks of Age, Nov 1	1,000	90,762	87,783	97
Pullets Added During Oct <sup>3</sup>	1,000	22,512	20,006	89

<sup>1</sup> The 30 States are listed in the table on page 8.

<sup>2</sup> Revised.

<sup>3</sup> Pullet chicks one day old added to pullet flocks.

**Layers and Eggs: Layers on Hand and Eggs Produced by State  
and United States, During September 1999-00**

State	Table Egg Layers in Flocks 30,000 and Above		All Layers <sup>1</sup>		Eggs per 100 for All Layers <sup>1</sup>	
	1999	2000	1999	2000	1999	2000
	<i>1,000</i>	<i>1,000</i>	<i>1,000</i>	<i>1,000</i>	<i>Number</i>	<i>Number</i>
AL	3,487	3,009	10,711	10,316	1,858	1,871
AR	4,933	5,164	15,205	15,016	1,907	1,871
CA	24,692	23,202	25,396	23,812	2,170	2,150
CO	3,112	2,951	3,643	3,440	2,223	2,180
CT	2,863	3,030	3,039	3,164	2,205	2,244
FL	9,862	9,759	10,584	10,401	2,116	2,134
GA	11,406	11,615	20,689	20,359	2,020	1,979
HI	571	579	599	604	1,987	1,821
IL	3,371	3,241	3,640	3,479	2,308	2,213
IN	21,260	21,804	21,955	22,490	2,200	2,170
IA	25,293	26,844	26,258	27,640	2,236	2,178
ME	4,551	4,115	4,670	4,170	2,313	2,098
MD	2,648	2,649	2,992	2,941	2,072	2,142
MI	5,571	5,799	5,847	6,073	2,206	2,157
MN	11,738	11,803	12,416	12,518	2,102	2,133
MS	1,719	1,881	6,815	6,614	1,864	1,875
MO	4,800	4,934	6,205	6,235	2,192	2,197
NE	11,240	11,964	11,390	12,029	2,090	2,137
NY	3,391	3,872	3,659	4,086	2,268	2,276
NC	3,549	3,496	10,929	10,877	1,894	1,793
OH	30,086	30,030	30,739	30,671	2,193	2,158
OK	1,989	1,934	4,024	3,943	1,938	1,927
OR	2,690	2,871	2,844	3,046	2,141	2,134
PA	21,131	22,403	22,477	23,908	2,251	2,213
SC	3,772	4,049	4,790	5,067	2,150	2,171
SD	1,894	1,940	2,135	2,200	2,295	2,273
TX	13,176	13,405	17,169	17,490	2,114	2,041
VA	1,505	1,426	3,626	3,346	1,903	1,823
WA	4,635	4,656	4,755	4,776	2,259	2,102
WI	3,356	4,050	3,845	4,673	2,289	2,226
30 Sts	244,291	248,475	303,046	305,384	2,127	2,097
Oth Sts <sup>2</sup>	13,818	14,522	19,348	20,086	2,145	2,156
US	258,109	262,997	322,394	325,470	2,128	2,101

<sup>1</sup> Includes all layers and eggs produced in both table egg and hatching egg flocks regardless of size.

<sup>2</sup> Estimates for individual States are not available.



**Layers and Eggs: Layers on Hand and Eggs Produced by State  
and United States, During October 1999-00**

State	Table Egg Layers in Flocks 30,000 and Above		All Layers <sup>1</sup>		Eggs per 100 for All Layers <sup>1</sup>	
	1999	2000	1999	2000	1999	2000
	<i>1,000</i>	<i>1,000</i>	<i>1,000</i>	<i>1,000</i>	<i>Number</i>	<i>Number</i>
AL	3,568	2,981	10,608	10,178	1,961	1,975
AR	4,917	5,122	15,340	14,874	1,949	1,997
CA	25,024	23,352	25,716	23,960	2,220	2,199
CO	3,155	2,928	3,678	3,409	2,365	2,259
CT	2,911	2,996	3,082	3,130	2,336	2,364
FL	10,041	10,112	10,724	10,784	2,201	2,235
GA	11,745	11,806	21,031	20,636	2,121	2,035
HI	565	589	594	612	2,037	1,846
IL	3,396	3,245	3,683	3,483	2,417	2,297
IN	21,360	21,847	22,038	22,536	2,246	2,241
IA	25,273	27,591	26,257	28,398	2,289	2,218
ME	4,490	4,012	4,623	4,079	2,379	2,349
MD	2,858	2,781	3,241	3,121	2,160	2,275
MI	5,822	5,836	6,089	6,110	2,201	2,226
MN	11,618	11,668	12,286	12,393	2,165	2,187
MS	1,770	1,845	6,881	6,540	1,933	1,972
MO	4,588	5,204	6,020	6,487	2,292	2,112
NE	11,427	11,846	11,577	11,911	2,159	2,183
NY	3,417	3,907	3,687	4,119	2,387	2,355
NC	3,686	3,580	11,114	10,984	1,943	1,875
OH	30,593	29,422	31,186	30,009	2,238	2,189
OK	1,954	1,885	3,931	3,830	2,010	1,984
OR	2,732	2,872	2,895	3,039	2,245	2,270
PA	21,508	22,853	22,809	24,292	2,315	2,305
SC	3,805	4,046	4,817	5,011	2,138	2,235
SD	1,893	1,964	2,134	2,224	2,343	2,338
TX	13,287	13,782	17,268	17,847	2,166	2,118
VA	1,595	1,505	3,543	3,322	2,032	1,987
WA	4,691	4,786	4,811	4,899	2,274	2,188
WI	3,593	4,096	4,083	4,719	2,327	2,373
30 Sts	247,282	250,459	305,746	306,936	2,189	2,168
Oth Sts <sup>2</sup>	14,038	14,637	19,526	20,209	2,238	2,232
US	261,320	265,096	325,272	327,145	2,192	2,172

<sup>1</sup> Includes all layers and eggs produced in both table egg and hatching egg flocks regardless of size.

<sup>2</sup> Estimates for individual States are not available.

**Egg Production: By Type, State, and United States,  
September 1999-00**

State	Total Production		Table Eggs <sup>1</sup>		Hatching Eggs <sup>1</sup>	
	1999	2000	1999	2000	1999	2000
	<i>Million Eggs</i>	<i>Million Eggs</i>	<i>Million Eggs</i>	<i>Million Eggs</i>	<i>Million Eggs</i>	<i>Million Eggs</i>
AL	199	193	72	61	127	132
AR	290	281	105	107	185	174
CA	551	512				
CO	81	75				
CT	67	71				
FL	224	222	212	211	12	11
GA	418	403	242	238	176	165
HI	11.9	11.0	11.9	11.0	0	0
IL	84	77	81	73	3	4
IN	483	488	472	476	11	12
IA	587	602				
ME	108	88				
MD	62	63	56	58	6	5
MI	129	131				
MN	261	267	251	258	10	9
MS	127	124	38	40	89	84
MO	136	137				
NE	238	257	238	257	0	0
NY	83	93				
NC	207	195	82	79	125	116
OH	674	662				
OK	78	76	45	44	33	32
OR	61	65	60	63	1	2
PA	506	529	491	510	15	19
SC	103	110	86	92	17	18
SD	49	50	49	50	0	0
TX	363	357				
VA	69	61	33	30	36	31
WA	107	100				
WI	88	104				
30 Sts	6,445	6,404	5,468	5,461	977	943
Oth Sts <sup>2</sup>	415	433	329	342	86	91
US	6,860	6,837	5,797	5,803	1,063	1,034

<sup>1</sup> Data by type of flock not shown for some States to avoid disclosing individual operations.

<sup>2</sup> Estimates for individual States are not available.

**Egg Production: By Type, State, and United States,  
October 1999-00**

State	Total Production		Table Eggs <sup>1</sup>		Hatching Eggs <sup>1</sup>	
	1999	2000	1999	2000	1999	2000
	<i>Million Eggs</i>	<i>Million Eggs</i>	<i>Million Eggs</i>	<i>Million Eggs</i>	<i>Million Eggs</i>	<i>Million Eggs</i>
AL	208	201	79	67	129	134
AR	299	297	109	114	190	183
CA	571	527				
CO	87	77				
CT	72	74				
FL	236	241	224	229	12	12
GA	446	420	261	246	185	174
HI	12.1	11.3	12.1	11.3	0	0
IL	89	80	85	76	4	4
IN	495	505	484	492	11	13
IA	601	630				
ME	110	96				
MD	70	71	64	65	6	6
MI	134	136				
MN	266	271	257	261	9	10
MS	133	129	40	43	93	86
MO	138	137				
NE	250	260	250	260	0	0
NY	88	97				
NC	216	206	89	85	127	121
OH	698	657				
OK	79	76	46	45	33	31
OR	65	69	64	68	1	1
PA	528	560	513	542	15	18
SC	103	112	85	94	18	18
SD	50	52	50	52	0	0
TX	374	378				
VA	72	66	37	34	35	32
WA	109	107				
WI	95	112				
30 Sts	6,694	6,655	5,689	5,682	1,005	973
Oth Sts <sup>2</sup>	437	451	350	356	87	95
US	7,131	7,106	6,039	6,038	1,092	1,068

<sup>1</sup> Data by type of flock not shown for some States to avoid disclosing individual operations.

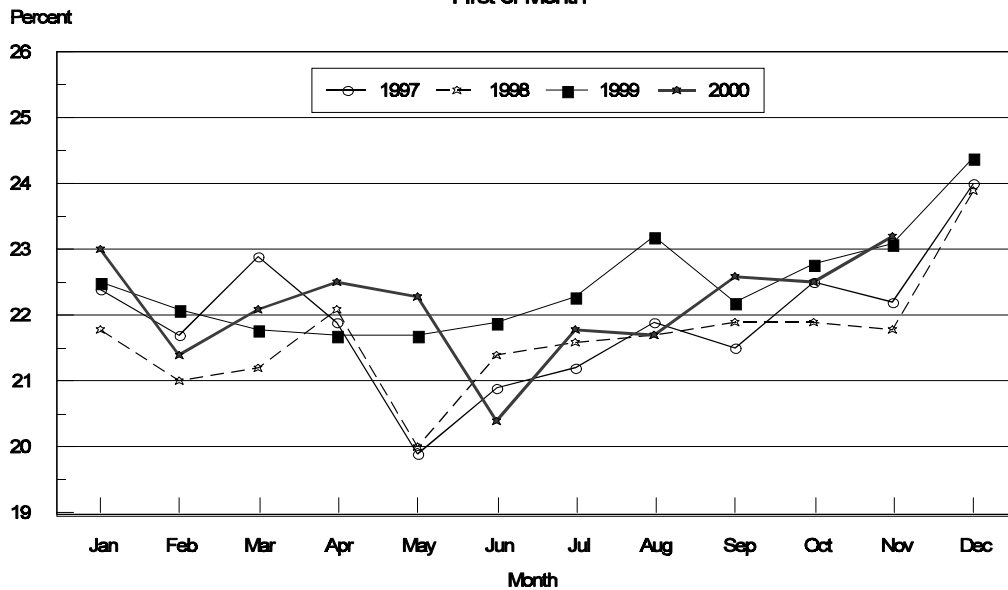
<sup>2</sup> Estimates for individual States are not available.

**Forced Molt: Percent of All Layers by Month,  
United States, 1999-00 <sup>1</sup>**

Month	Percent Being Molted		Percent with Molt Completed	
	1999	2000	1999	2000
	<i>Percent</i>	<i>Percent</i>	<i>Percent</i>	<i>Percent</i>
Jan	4.1	2.9	22.5	22.9
Feb	4.9	5.0	22.1	21.4
Mar	3.3	3.7	21.8	22.1
Apr	2.8	2.2	21.7	22.5
May	5.6	4.0	21.7	22.3
Jun	5.2	5.8	21.9	20.4
Jul	5.5	4.8	22.1	21.9
Aug	4.6	4.3	23.0	21.8
Sep	4.3	4.6	22.2	22.6
Oct	4.2	5.7	22.8	22.5
Nov	3.6	4.0	23.1	23.2
Dec	2.0		24.4	

<sup>1</sup> As of first of month.

**All Layers: United States  
Percent Molt Completed, 1997 - 2000  
First of Month**



**Forced Molt: Percent of All Layers by State  
and United States, November 1999-00 <sup>1</sup>**

State	Percent Being Molted		Percent with Molt Completed	
	1999	2000	1999	2000
	<i>Percent</i>	<i>Percent</i>	<i>Percent</i>	<i>Percent</i>
AL	2.0	0.0	11.0	10.0
AR	2.5	3.0	9.5	12.0
CA	8.0	7.5	42.5	37.0
CO	0.0	0.0	26.0	22.5
CT	0.0	2.0	12.5	12.0
FL	4.5	2.0	41.5	31.0
GA	1.0	4.0	16.0	21.5
HI	6.0	6.0	41.0	46.5
IL	0.5	2.5	21.5	40.5
IN	5.0	2.0	26.5	26.5
IA	4.0	5.5	32.5	27.5
ME	0.0	0.0	0.0	0.0
MD	6.5	8.0	39.0	34.5
MI	2.5	7.0	22.0	38.0
MN	3.0	4.5	35.5	34.0
MS	1.0	1.5	12.5	12.0
MO	3.0	4.5	26.0	25.0
NE	7.5	7.5	27.5	23.0
NY	0.0	2.5	3.5	5.5
NC	2.0	1.5	8.0	8.5
OH	3.0	9.5	12.5	17.0
OK	3.5	1.0	8.0	7.0
OR	4.0	4.5	35.5	36.5
PA	6.0	1.5	20.0	15.0
SC	6.5	0.0	25.5	28.0
SD	2.5	3.5	31.0	28.0
TX	2.0	1.5	23.0	22.5
VA	1.0	3.0	14.0	19.0
WA	5.5	10.5	42.5	39.5
WI	2.5	0.5	20.5	36.0
30 Sts	3.7	4.1	23.1	23.0
Oth Sts <sup>2</sup>	2.9	2.3	22.1	26.3
US	3.6	4.0	23.1	23.2

<sup>1</sup> As of first of month.

<sup>2</sup> Estimates for individual States are not available.

**Hatchery Production: Eggs in Incubators, Chicks Hatched,  
and Placements by Type, United States, October-November 1999-00**

Item	1999	2000	2000 as % of 1999
	<i>1,000</i>	<i>1,000</i>	<i>Percent</i>
<b>Egg-Type</b>			
Eggs in Incubators on Nov 1	31,011	28,644	92
Chicks Hatched During Oct	39,044	35,231	90
Chicks Hatched Jan thru Oct	384,991	362,180	94
Pullets Hatched During Oct for Intended Placements in Hatchery Supply Flocks	277	283	102
7-18 Month Earlier <sup>1</sup>	3,134	2,996	96
<b>Broiler-Type</b>			
Eggs in Incubators on Nov 1	572,876	563,263	98
Chicks Hatched During Oct	697,434	711,012	102
Chicks Hatched Jan thru Oct	7,290,497	7,369,134	101
Pullets Hatched During Oct for Intended Placements in Hatchery Supply Flocks	7,121	6,694	94
7-15 Months Earlier <sup>2</sup>	63,549	63,893	101

<sup>1</sup> 2000 includes pullet chicks hatched Apr 1999 through Mar 2000.

<sup>2</sup> 2000 includes pullet chicks hatched Jul 1999 through Mar 2000.

**Egg-Type Eggs in Incubators: By Region and United States,  
November 1, 1999-00**

Geographic Division	1999	2000	2000 as % of 1999
	<i>1,000</i>	<i>1,000</i>	<i>Percent</i>
North Atlantic	5,530	5,787	105
E North Central	8,624	5,913	69
W North Central	5,815	5,826	100
South Atlantic	3,141	3,123	99
South Central	3,724	3,744	101
West	4,177	4,251	102
<b>US</b>	<b>31,011</b>	<b>28,644</b>	<b>92</b>

**Regional Listing:**

North Atlantic = CT, ME, MA, NH, NJ, NY, PA, RI, VT.

E North Central = IL, IN, MI, OH, WI.

W North Central = IA, KS, MN, MO, NE, ND, SD.

South Atlantic = DE, FL, GA, MD, NC, SC, VA, WV.

South Central = AL, AR, KY, LA, MS, OK, TN, TX.

West = AK, AZ, CA, CO, HI, ID, MT, NM, NV, OR, UT, WA, WY.

**Egg-Type Chicks Hatched: By State and United States,  
October 1999-00**

State	October			Jan-Oct		
	1999	2000	2000 as % of 1999	1999	2000	2000 as % of 1999
	<i>1,000</i>	<i>1,000</i>	<i>Percent</i>	<i>1,000</i>	<i>1,000</i>	<i>Percent</i>
AR	819	890	109	8,207	8,254	101
FL	1,084	1,012	93	10,792	10,055	93
GA	2,044	1,916	94	19,651	19,308	98
IN	7,180	5,782	81	71,448	59,274	83
IA	4,473	5,168	116	48,357	54,102	112
KS	194	312	161	3,061	2,928	96
MN	1,828	1,342	73	18,280	17,140	94
MO	306	306	100	3,456	3,456	100
PA	6,490	5,668	87	55,621	53,190	96
Oth Sts <sup>1</sup>	14,626	12,835	88	146,118	134,473	92
US	39,044	35,231	90	384,991	362,180	94

<sup>1</sup> Not published separately to avoid disclosing data for individual operations.

**Egg-Type Chicks Hatched: By Month, United States, 1998-00**

Month	By Months				Cumulative			
	1998	1999	2000	2000 as % of 1999	1998	1999	2000	2000 as % of 1999
	<i>1,000</i>	<i>1,000</i>	<i>1,000</i>	<i>Percent</i>	<i>1,000</i>	<i>1,000</i>	<i>1,000</i>	<i>Percent</i>
Jan	37,168	35,242	34,125	97	37,168	35,242	34,125	97
Feb	34,597	36,367	35,491	98	71,765	71,609	69,616	97
Mar	40,604	41,172	39,560	96	112,369	112,781	109,176	97
Apr	39,057	41,950	36,621	87	151,426	154,731	145,797	94
May	39,206	40,726	40,879	100	190,632	195,457	186,676	96
Jun	39,323	41,474	36,575	88	229,955	236,931	223,251	94
Jul	35,576	34,275	33,091	97	265,531	271,206	256,342	95
Aug	33,398	35,454	34,317	97	298,929	306,660	290,659	95
Sep	37,959	39,287	36,290	92	336,888	345,947	326,949	95
Oct	34,667	39,044	35,231	90	371,555	384,991	362,180	94
Nov	31,217	32,892			402,772	417,883		
Dec	35,501	33,045			438,273	450,928		

**Intended Placements: Egg-Type Pullet Chicks for Hatchery Supply  
Flocks by Month and Total, United States, 1998-00<sup>1</sup>**

Month	Pullet Chicks Hatched			2000 as % of 1999	Cumulative Potential Placements Relative to Current Supply Flocks 7-18 Months Earlier <sup>2</sup>		
	1998	1999	2000		1999	2000	2001
	<i>1,000</i>	<i>1,000</i>	<i>1,000</i>	<i>Percent</i>	<i>1,000</i>	<i>1,000</i>	<i>1,000</i>
Jan	189	166	212	128	3,029	3,012	3,114
Feb	250	267	251	94	3,120	2,945	3,235
Mar	225	257	286	111	3,020	3,078	3,192
Apr	333	287	309	108	2,942	2,981	3,242
May	192	283	343	121	3,044	2,900	3,248
Jun	354	187	223	119	3,132	2,945	
Jul	298	231	352	152	3,108	2,937	
Aug	185	318	275	86	3,085	2,983	
Sep	324	227	277	122	3,102	2,967	
Oct	358	277	283	102	3,134	2,996	
Nov	217	262			3,088	3,018	
Dec	183	175			3,179	3,078	
Total	3,108	2,937					

<sup>1</sup> Reported by leading breeders. Coverage may not be 100 percent. Includes expected pullet chicks from eggs sold during the preceding month at the rate of 125 pullet chicks per 30 dozen case of eggs.

<sup>2</sup> For October 2000, includes breeder pullet chicks hatched Apr 1999 through Mar 2000. The 7-18 months represent the first laying cycle. Molting and additional laying cycles will increase the cumulative potential placements.

**Broiler-Type Eggs in Incubators: By Region  
and United States, November 1, 1999-00**

Geographic Division	1999	2000	2000 as % of 1999
	<i>1,000</i>	<i>1,000</i>	<i>Percent</i>
North Atlantic	10,398	9,795	94
E North Central	7,563	6,644	88
W North Central	18,389	18,357	100
South Atlantic	220,114	213,788	97
South Central	293,837	292,025	99
West	22,575	22,654	100
US	572,876	563,263	98



**Broiler-Type Chicks Hatched: By State  
and United States, October 1999-00**

State	October			Jan-Oct		
	1999	2000	2000 as % of 1999	1999	2000	2000 as % of 1999
	<i>1,000</i>	<i>1,000</i>	<i>Percent</i>	<i>1,000</i>	<i>1,000</i>	<i>Percent</i>
AL	92,854	99,676	107	956,375	1,019,771	107
AR	102,741	103,120	100	1,068,440	1,078,941	101
DE	14,504	14,004	97	157,138	149,139	95
FL	9,169	9,215	101	96,545	95,733	99
GA	105,417	107,333	102	1,097,878	1,095,156	100
MD	27,449	28,185	103	303,714	299,924	99
MS	62,322	63,467	102	640,303	649,739	101
NC	59,962	61,291	102	626,083	628,567	100
PA	11,944	12,683	106	127,181	127,434	100
SC	16,124	16,751	104	163,213	166,387	102
TX	48,337	51,171	106	478,984	513,664	107
VA	21,568	22,232	103	236,323	235,634	100
CA TN & WV	36,765	35,416	96	396,751	393,356	99
15 Sts <sup>1</sup>	609,156	624,544	103	6,348,928	6,453,445	102
Oth Sts <sup>2</sup>	88,278	86,468	98	941,569	915,689	97
US	697,434	711,012	102	7,290,497	7,369,134	101

<sup>1</sup> States in the weekly hatchery production estimating program.

<sup>2</sup> Not published separately to avoid disclosing data for individual operations.

**Broiler Chicks Hatched: By Month, United States, 1998-00**

Month	By Months				Cumulative			
	1998	1999	2000	2000 as % of 1999	1998	1999	2000	2000 as % of 1999
	<i>1,000</i>	<i>1,000</i>	<i>1,000</i>	<i>Percent</i>	<i>1,000</i>	<i>1,000</i>	<i>1,000</i>	<i>Percent</i>
Jan	711,373	735,768	749,375	102	711,373	735,768	749,375	102
Feb	645,180	662,604	700,967	106	1,356,553	1,398,372	1,450,342	104
Mar	730,316	755,804	756,351	100	2,086,869	2,154,176	2,206,693	102
Apr	708,260	734,734	743,516	101	2,795,129	2,888,910	2,950,209	102
May	739,319	766,422	775,181	101	3,534,448	3,655,332	3,725,390	102
Jun	717,967	744,372	748,008	100	4,252,415	4,399,704	4,473,398	102
Jul	722,715	751,627	739,892	98	4,975,130	5,151,331	5,213,290	101
Aug	715,650	741,716	739,931	100	5,690,780	5,893,047	5,953,221	101
Sep	695,281	700,016	704,901	101	6,386,061	6,593,063	6,658,122	101
Oct	693,204	697,434	711,012	102	7,079,265	7,290,497	7,369,134	101
Nov	674,851	676,769			7,754,116	7,967,266		
Dec	737,822	748,438			8,491,938	8,715,704		

**Intended Placements: Broiler-Type Pullet Chicks for Hatchery  
Supply Flocks by Month and Total, 1998-00 <sup>1</sup>**

Month	Pullet Chicks Hatched			2000 as % of 1999	Cumulative Potential Placements Relative to Current Supply Flocks 7-15 Months Earlier <sup>2</sup>		
	1998	1999	2000		1999	2000	2001
	<i>1,000</i>	<i>1,000</i>	<i>1,000</i>	<i>Percent</i>	<i>1,000</i>	<i>1,000</i>	<i>1,000</i>
US Place- ments							
Jan	6,765	7,059	6,861	97	59,403	64,139	63,298
Feb	6,328	6,882	7,001	102	59,937	64,344	62,487
Mar	6,776	7,284	7,310	100	60,699	64,697	62,791
Apr	6,687	7,038	6,764	96	61,775	64,663	62,267
May	7,062	7,736	7,435	96	61,893	64,725	62,100
Jun	6,932	7,041	6,829	97	62,877	64,827	
Jul	6,788	7,088	6,310	89	63,005	64,536	
Aug	7,109	7,665	7,288	95	63,377	64,359	
Sep	7,328	6,870	6,469	94	63,197	63,624	
Oct	6,883	7,121	6,694	94	63,549	63,893	
Nov	7,312	6,984			63,799	63,569	
Dec	6,904	6,993			64,426	63,339	
Annual Total	82,874	85,761					
Total Place- ments <sup>3</sup>							
Jan	8,613	8,679	8,069	93			
Feb	8,273	8,473	8,302	98			
Mar	8,760	8,863	8,798	99			
Apr	8,300	8,572	8,522	99			
May	8,957	9,463	8,917	94			
Jun	8,757	8,333	8,201	98			
Jul	8,423	8,342	7,621	91			
Aug	8,686	8,983	8,657	96			
Sep	8,985	8,044	8,042	100			
Oct	8,756	8,223	8,260	100			
Nov	9,412	8,220					
Dec	8,830	8,299					
Annual Total	104,752	102,494					

<sup>1</sup> Reported by leading breeders. Coverage may not be 100 percent. Includes expected pullet chicks from eggs sold during the preceding month at the rate of 125 pullet chicks per 30 dozen case of eggs.

<sup>2</sup> For Oct 2000, includes breeder pullet chicks hatched Jul 1999 through Mar 2000.

<sup>3</sup> U.S. production of intended placements worldwide.

## Procedures and Reliability

**Data Sources:** Primary data for the "**Chickens and Eggs**" report are from weekly and/or monthly questionnaires sent to producers. An attempt is made to collect information for layer and egg estimates from each known contractor and independent producer who has over 30,000 table egg layers. Coverage for operations with less than 30,000 table egg layers are estimated each month based on data reported in December. Approximately 900 contractors, independent egg producers, and started pullet operations are contacted each month. All known hatcheries, approximately 330, are contacted for information on a weekly and/or monthly basis.

**Revisions:** The previous month's estimates are subject to revision if late reports or corrected data indicates a different level. Additionally, revisions needed after the monthly report will be made at the end of the marketing year and published in the annual summaries of "**Chickens and Eggs Summary**" and "**Hatchery Production**".

**Procedures and Reliability:** Operations are mailed a questionnaire and given adequate time to respond by mail. Those that do not respond are phoned. Great care is exercised to ensure that all operations are accounted for during each survey period. However, there are usually missing reports that must be accounted for in the estimates.

Sound statistical methodology is employed to derive estimates from the reported data. All data are checked for unusual values. All operations' data are compared to their own past operating profiles and also to trends from other operations. Data for missing operations are estimated based on similar operations or historical data. Survey data are subject to non-sampling errors such as omissions and mistakes in reporting and in processing. While these errors cannot be measured directly, they are minimized by reviewing all data for consistency and reasonableness.

Egg-type chicks hatched are comprised of all chicks of egg-type domesticated breeds including males and chicks destined for hatchery supply flocks and research purposes. The relationship of chicks hatched to chicken inventory and poultry marketings is carefully monitored. The disposition of egg-type chicks hatched prior to placement into the laying flock can vary significantly, which can make comparisons to changes in layer inventory inconsistent over time.

Intended placement data reported by leading breeders include pullet chicks expected from eggs sold the preceding month. The breeders in this report account for a large percentage of replacement pullets for hatchery supply flocks. Production of replacement pullets by these breeders indicates the number of pullets available to hatchery egg supply flocks several months before the pullets will actually move into the flocks. Beginning with the January 1996 publication the broiler-type cumulative potential placements went from 7-14 months earlier to 7-15 months earlier. The egg-type cumulative potential placements of 7-18 months represent the first laying cycle. Molting and additional laying cycles will increase the cumulative potential placements of egg-type hatching flocks.

The next "Chickens and Eggs" report will be released at 3 p.m. on December 22, 2000.

The United States Department of Agriculture (USDA) prohibits discrimination in all its programs on the basis of race, color, national origin, gender, religion, age, disability, political beliefs, sexual orientation, and marital or family status. (Not all prohibited bases apply to all programs.) Persons with disabilities who require alternative means for communication of program information (braille, large print, audiotape, etc.) should contact the USDA's TARGET Center at 202-720-2600 (voice and TDD).

To file a complaint of discrimination, write USDA, Director, Office of Civil Rights, Room 326-W, Whitten Building, 14th and Independence Avenue, SW, Washington, D.C., 20250-9410, or call 202-720-5964 (voice or TDD). USDA is an equal opportunity provider and employer.

## **ACCESS TO REPORTS!!**

---

For your convenience, there are several ways to obtain NASS reports, data products, and services:

### **INTERNET ACCESS**

All NASS reports are available free of charge on the worldwide Internet. For access, connect to the Internet and go to the NASS Home Page at: <http://www.usda.gov/nass/>. Select "Today's Reports" or Publications and then Reports by Calendar or Publications and then Search, by Title or Subject.

### **E-MAIL SUBSCRIPTION**

There are two options for subscribing via e-mail. All NASS reports are available by subscription free of charge direct to your e-mail address. 1) Starting with the NASS Home Page at <http://www.usda.gov/nass/>, click on **Publications**, then click on the **Subscribe by E-mail** button which takes you to the page describing e-mail delivery of reports. Finally, click on **Go to the Subscription Page** and follow the instructions. 2) If you do NOT have Internet access, send an e-mail message to: [usda-reports@usda.mannlib.cornell.edu](mailto:usda-reports@usda.mannlib.cornell.edu). In the body of the message type the word: **list**.

### **AUTOFAX ACCESS**

NASSFax service is available for some reports from your fax machine. Please call 202-720-2000, using the handset attached to your fax. Respond to the voice prompts. Document 0411 is a list of available reports.

-----

### **PRINTED REPORTS OR DATA PRODUCTS**

**CALL OUR TOLL-FREE ORDER DESK: 800-999-6779 (U.S. and Canada)**  
**Other areas, please call 703-834-0125      FAX: 703-834-0110**  
**(Visa, MasterCard, check, or money order acceptable for payment.)**

-----

### **ASSISTANCE**

For **assistance** with general agricultural statistics or further information about NASS or its products or services, contact the **Agricultural Statistics Hotline** at **800-727-9540**, 7:30 a.m. to 4:00 p.m. ET, or e-mail: [nass@nass.usda.gov](mailto:nass@nass.usda.gov).