

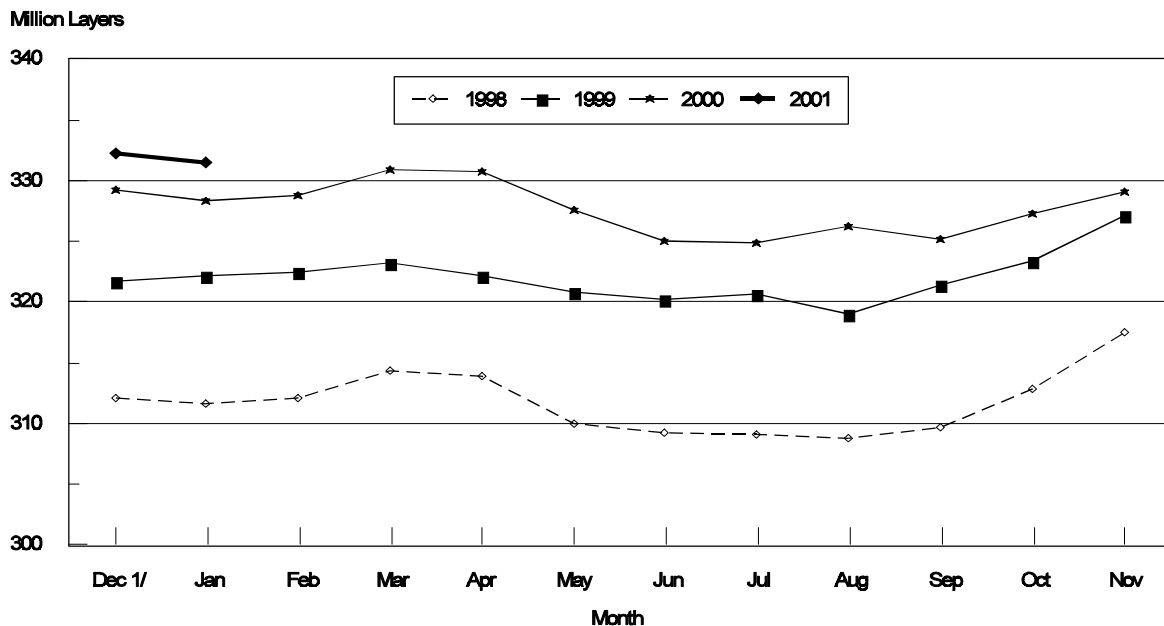
Released January 30, 2001, by the National Agricultural Statistics Service (NASS), Agricultural Statistics Board, U.S. Department of Agriculture. For information on "Chickens and Eggs" call Tom Kruchten at (202) 690-4870. For information on Hatch call Jody Roberts at (202) 690-8632, office hours 7:30 a.m. to 4:00 p.m. ET.

December Egg Production Down Slightly

U.S. egg production totaled 7.28 billion during December 2000, down slightly from last year. Production included 6.20 billion table eggs and 1.08 billion hatching eggs, of which 1.02 billion were broiler-type and 63.0 million were egg-type. The total number of layers during December 2000 averaged 332 million, up 1 percent from the total average number of layers during December 1999. December egg production per 100 layers was 2,192 eggs, down 1 percent from 2,214 eggs in December 1999.

December 2000 contained 21 weekdays, 1 holiday and five Saturdays, compared to 23 weekdays, 1 holiday and 4 Saturdays in December 1999.

All Layers: 1st of Month United States, 1998 - 2001



All layers in the U.S. on January 1, 2001, totaled 332 million, up 1 percent from a year ago. The 332 million layers consisted of 274 million layers producing table or commercial type eggs, 55.2 million layers producing broiler-type hatching eggs, and 2.85 million layers producing egg-type hatching eggs. Rate of lay per day on January 1, 2001, averaged 70.3 eggs per 100 layers, down 1 percent from the 71.0 eggs a year ago.

Laying flocks in the 30 major egg producing States produced 6.81 billion eggs during December 2000, down 1 percent from December 1999. The average number of layers during December, at 311 million, was up 1 percent from a year earlier.

Individual State estimates are available for the 30 major egg producing States. These States are listed on page 8 of this release and account for approximately 94 percent of the total U.S. egg production. Production for the other States are grouped into an "Other States" category and combined with the 30 States published individually to obtain a U.S. estimate. Individual State estimates for "Other States" are available annually in the "**Chickens and Eggs Summary**" report.

Egg-Type Chicks Hatched Up 6 Percent

Egg-type chicks **hatched** during December totaled 35 million, up 6 percent from December 1999. **Eggs in incubators** totaled 33.9 million on January 1, 2001, up 11 percent from a year ago.

Domestic placements of **egg-type pullet chicks for future hatchery supply flocks** by leading breeders totaled 324,000 during December 2000, up 85 percent from December 1999.

Broiler Hatch Down 1 Percent

The December 2000 **hatch** of broiler-type chicks, at 739 million, was down 1 percent from December of the previous year. There were 611 million **eggs in incubators** on January 1, 2001, down 2 percent from a year earlier.

Leading breeders placed 6.43 million **broiler-type pullet chicks for future domestic hatchery supply flocks** during December 2000, down 8 percent from December 1999.

**All Layers: Average Number on Hand During the Month,
United States, 1998-01**

Month	1998	1999	2000	2001
	<i>1,000 Layers</i>	<i>1,000 Layers</i>	<i>1,000 Layers</i>	<i>1,000 Layers</i>
Dec ¹	311,898	321,972	328,828	331,908
Jan	311,906	322,356	328,557	
Feb	313,285	322,827	329,843	
Mar	314,141	322,782	330,862	
Apr	311,957	321,539	329,223	
May	309,655	320,510	326,326	
Jun	309,206	320,441	324,957	
Jul	308,967	319,819	325,563	
Aug	309,291	320,188	325,753	
Sep	311,358	322,409	326,237	
Oct	315,222	325,287	328,178	
Nov	319,625	328,268	330,678	

¹ December preceding year.

**Eggs: Production During the Month by Type,
United States, 2000-01**

Month	Total Eggs		Table Eggs		Hatching Eggs	
	2000	2001	2000	2001	2000	2001
	<i>Million Eggs</i>	<i>Million Eggs</i>	<i>Million Eggs</i>	<i>Million Eggs</i>	<i>Million Eggs</i>	<i>Million Eggs</i>
Dec ¹	7,279	7,275	6,198	6,196	1,081	1,079
Jan	7,157		6,070		1,087	
Feb	6,648		5,625		1,023	
Mar	7,234		6,110		1,124	
Apr	7,013		5,911		1,102	
May	7,104		5,970		1,134	
Jun	6,801		5,722		1,079	
Jul	7,061		5,952		1,109	
Aug	7,104		6,015		1,089	
Sep	6,854		5,820		1,034	
Oct	7,130		6,063		1,067	
Nov	7,027		5,989		1,038	
During Year	84,412	7,275	71,445	6,196	12,967	1,079

¹ December preceding year.

**Layers and Eggs: Layers on Hand and Eggs Produced by Type,
and Forced Molt, United States, November-December 1999-00**

Item	Unit	1999	2000	2000 as % of 1999
Layers During Nov	1,000			
All Layers		328,268	330,678	101
Table Egg Type		270,042	274,461	102
Hatching Egg Type		58,226	56,217	97
Broiler-Type Hatching		55,535	53,662	97
Egg-Type Hatching		2,691	2,555	95
Eggs per 100 Layers During Nov	Number			
All Layers		2,138	2,125	99
Table Egg Type		2,210	2,182	99
Hatching Egg Type		1,803	1,846	102
Broiler-Type Hatching		1,781	1,826	103
Egg-Type Hatching		2,267	2,270	100
Eggs Produced During Nov	Million			
All Layers		7,017	7,027	100
Table Egg Type		5,967	5,989	100
Hatching Egg Type		1,050	1,038	99
Broiler-Type Hatching		989	980	99
Egg-Type Hatching		61	58	95
Layers on Dec 1	1,000			
All Layers		329,320	332,205	101
Table Egg Type		270,795	275,867	102
Hatching Egg Type		58,525	56,338	96
Broiler-Type Hatching		55,778	53,745	96
Egg-Type Hatching		2,747	2,593	94
Eggs per 100 Layers on Dec 1	Number			
All Layers		71.7	71.0	99
Table Egg Type		74.4	73.0	98
Hatching Egg Type		59.2	61.0	103
Broiler-Type Hatching		58.4	60.3	103
Egg-Type Hatching		75.4	74.9	99
Forced Molt Layers on Dec 1	Percent			
Percent Being Molted		2.0	2.9	145
Percent with Molt Completed		24.4	25.8	106
Layers Sold for Slaughter During Nov	1,000	16,187	15,939	98
Layers Rendered, Died, Destroyed, Composted or Disappeared For Any Reason During Nov	1,000	3,831	3,450	90
Pullets Less Than 20 Weeks of Age, Dec 1	1,000	97,362	94,408	97
Pullets Added During Nov ¹	1,000	23,726	22,949	97

¹ Pullet chicks one day old added to pullet flocks.

**Layers and Eggs: Layers on Hand and Eggs Produced by Type,
and Forced Molt, United States, December-January 1999-01**

Item	Unit	1999	2000	2000 as % of 1999
Layers During Dec	1,000			
All Layers		328,828	331,908	101
Table Egg Type		270,371	274,725	102
Hatching Egg Type		58,457	57,183	98
Broiler-Type Hatching		55,722	54,456	98
Egg-Type Hatching		2,735	2,727	100
Eggs per 100 Layers During Dec	Number			
All Layers		2,214	2,192	99
Table Egg Type		2,292	2,255	98
Hatching Egg Type		1,849	1,887	102
Broiler-Type Hatching		1,825	1,866	102
Egg-Type Hatching		2,340	2,310	99
Eggs Produced During Dec	Million			
All Layers		7,279	7,275	100
Table Egg Type		6,198	6,196	100
Hatching Egg Type		1,081	1,079	100
Broiler-Type Hatching		1,017	1,016	100
Egg-Type Hatching		64	63	98
		2000	2001	2001 as % of 2000
Layers on Jan 1	1,000			
All Layers		328,307	331,564	101
Table Egg Type		269,919	273,557	101
Hatching Egg Type		58,388	58,007	99
Broiler-Type Hatching		55,658	55,156	99
Egg-Type Hatching		2,730	2,851	104
Eggs per 100 Layers on Jan 1	Number			
All Layers		71.0	70.3	99
Table Egg Type		73.5	72.4	99
Hatching Egg Type		59.7	60.3	101
Broiler-Type Hatching		58.9	59.6	101
Egg-Type Hatching		77.3	75.2	97
Forced Molt Layers on Jan 1	Percent			
Percent Being Molted		2.9	3.4	117
Percent with Molt Completed		22.9	24.1	105
Layers Sold for Slaughter During Dec	1,000	16,549	16,257	98
Layers Rendered, Died, Destroyed, Composted or Disappeared For Any Reason During Dec		1,820	3,862	212
Pullets Less Than 20 Weeks of Age, Jan 1	1,000	97,767	92,641	95
Pullets Added During Dec ¹	1,000	20,088	22,159	110

¹ Pullet chicks one day old added to pullet flocks.

Layers and Eggs: Layers on Hand and Eggs Produced by Type, and Forced Molt, 30 Selected States, November-December, 1999-00 ¹

Item	Unit	1999	2000	2000 as % of 1999
Layers During Nov	1,000			
All Layers		308,680	309,986	100
Table Egg Type		254,911	258,405	101
Hatching Egg Type		53,769	51,581	96
Broiler-Type Hatching		51,181	49,120	96
Egg-Type Hatching		2,588	2,461	95
Eggs per 100 Layers During Nov	Number			
All Layers		2,137	2,122	99
Table Egg Type		2,205	2,180	99
Hatching Egg Type		1,817	1,836	101
Broiler-Type Hatching		1,794	1,814	101
Egg-Type Hatching		2,280	2,275	100
Eggs Produced During Nov	Million			
All Layers		6,597	6,579	100
Table Egg Type		5,620	5,632	100
Hatching Egg Type		977	947	97
Broiler-Type Hatching		918	891	97
Egg-Type Hatching		59	56	95
Layers on Dec 1	1,000			
All Layers		309,701	311,214	100
Table Egg Type		255,628	259,554	102
Hatching Egg Type		54,073	51,660	96
Broiler-Type Hatching		51,440	49,158	96
Egg-Type Hatching		2,633	2,502	95
Eggs per 100 Layers on Dec 1	Number			
All Layers		71.8	70.9	99
Table Egg Type		74.3	72.9	98
Hatching Egg Type		60.1	60.8	101
Broiler-Type Hatching		59.3	60.1	101
Egg-Type Hatching		75.7	74.7	99
Forced Molt Layers on Dec 1	Percent			
Percent Being Molted		2.1	3.0	143
Percent with Molt Completed		24.7	25.9	105
Layers Sold for Slaughter During Nov	1,000	15,273	14,876	97
Layers Rendered, Died, Destroyed, Composted or Disappeared For Any Reason During Nov	1,000	3,668	3,265	89
Pullets Less Than 20 Weeks of Age, Dec 1	1,000	91,042	88,352	97
Pullets Added During Nov ²	1,000	22,381	21,786	97

¹ The 30 States are listed in the table on page 8.

² Pullet chicks one day old added to pullet flocks.

**Layers and Eggs: Layers on Hand and Eggs Produced by Type,
and Forced Molt, 30 Selected States, December-January 1999-01 ¹**

Item	Unit	1999	2000	2000 as % of 1999
Layers During Dec	1,000			
All Layers		309,223	310,953	101
Table Egg Type		255,198	258,388	101
Hatching Egg Type		54,025	52,565	97
Broiler-Type Hatching		51,402	49,929	97
Egg-Type Hatching		2,623	2,636	100
Eggs per 100 Layers During Dec	Number			
All Layers		2,215	2,190	99
Table Egg Type		2,290	2,252	98
Hatching Egg Type		1,864	1,883	101
Broiler-Type Hatching		1,838	1,861	101
Egg-Type Hatching		2,364	2,314	98
Eggs Produced During Dec	Million			
All Layers		6,850	6,809	99
Table Egg Type		5,843	5,819	100
Hatching Egg Type		1,007	990	98
Broiler-Type Hatching		945	929	98
Egg-Type Hatching		62	61	98
		2000	2001	2001 as % of 2000
Layers on Jan 1	1,000			
All Layers		308,729	310,656	101
Table Egg Type		254,748	257,202	101
Hatching Egg Type		53,981	53,454	99
Broiler-Type Hatching		51,358	50,692	99
Egg-Type Hatching		2,623	2,762	105
Eggs per 100 Layers on Jan 1	Number			
All Layers		71.0	70.2	99
Table Egg Type		73.4	72.3	99
Hatching Egg Type		59.7	60.3	101
Broiler-Type Hatching		58.8	59.5	101
Egg-Type Hatching		77.4	75.4	97
Forced Molt Layers on Jan 1	Percent			
Percent Being Molted		2.8	3.5	125
Percent with Molt Completed		23.2	24.1	104
Layers Sold for Slaughter During Dec	1,000	15,894	15,257	96
Layers Rendered, Died, Destroyed, Composted or Disappeared For Any Reason During Dec	1,000	1,833	3,711	202
Pullets Less Than 20 Weeks of Age, Jan 1	1,000	91,630	85,897	94
Pullets Added During Dec ²	1,000	19,324	20,677	107

¹ The 30 States are listed in the table on page 8.

² Pullet chicks one day old added to pullet flocks.

**Layers and Eggs: Layers on Hand and Eggs Produced by State
and United States, During November 1999-00**

State	Table Egg Layers in Flocks 30,000 and Above		All Layers ¹		Eggs per 100 for All Layers ¹	
	1999	2000	1999	2000	1999	2000
	<i>1,000</i>	<i>1,000</i>	<i>1,000</i>	<i>1,000</i>	<i>Number</i>	<i>Number</i>
AL	3,595	2,948	10,533	10,100	1,937	1,901
AR	4,990	5,388	15,550	14,931	1,878	1,969
CA	24,815	23,544	25,502	24,148	2,141	2,145
CO	3,254	2,929	3,773	3,380	2,253	2,219
CT	2,934	3,024	3,087	3,135	2,332	2,360
FL	10,097	10,148	10,727	10,754	2,144	2,176
GA	11,833	11,778	21,065	20,754	2,098	2,029
HI	569	596	598	621	1,940	1,820
IL	3,258	3,276	3,601	3,539	2,305	2,176
IN	21,886	22,006	22,546	22,730	2,209	2,173
IA	25,686	29,905	26,601	30,686	2,210	2,196
ME	4,477	3,933	4,611	4,011	2,321	2,167
MD	3,004	2,935	3,438	3,327	2,269	2,044
MI	5,923	5,946	6,189	6,209	2,197	2,174
MN	11,960	11,645	12,631	12,378	2,114	2,109
MS	1,759	1,789	6,845	6,536	1,928	1,974
MO	4,636	5,350	6,111	6,626	2,242	2,098
NE	11,620	11,736	11,770	11,819	2,116	2,090
NY	3,502	3,893	3,732	4,158	2,304	2,285
NC	3,647	3,628	11,338	11,058	1,870	1,881
OH	30,817	28,805	31,400	29,367	2,188	2,111
OK	1,962	1,861	3,945	3,809	1,926	1,917
OR	2,741	2,786	2,917	2,954	2,228	2,302
PA	21,631	22,957	22,965	24,353	2,216	2,287
SC	3,906	4,274	4,881	5,183	2,090	2,161
SD	1,904	1,985	2,125	2,215	2,212	2,257
TX	13,786	14,221	17,796	18,422	2,152	2,074
VA	1,580	1,554	3,462	3,334	1,993	2,070
WA	4,604	4,821	4,724	4,909	2,231	2,200
WI	3,639	3,935	4,217	4,540	2,324	2,357
30 Sts	250,015	253,596	308,680	309,986	2,137	2,122
Oth Sts ²	14,080	14,981	19,588	20,692	2,144	2,165
US	264,095	268,577	328,268	330,678	2,138	2,125

¹ Includes all layers and eggs produced in both table egg and hatching egg flocks regardless of size.

² Estimates for individual States are not available.

**Layers and Eggs: Layers on Hand and Eggs Produced by State
and United States, During December 1999-00**

State	Table Egg Layers in Flocks 30,000 and Above		All Layers ¹		Eggs per 100 for All Layers ¹	
	1999	2000	1999	2000	1999	2000
	<i>1,000</i>	<i>1,000</i>	<i>1,000</i>	<i>1,000</i>	<i>Number</i>	<i>Number</i>
AL	3,462	3,030	10,443	10,247	1,982	1,923
AR	5,151	5,537	15,782	15,250	1,926	1,977
CA	24,282	23,161	24,931	23,826	2,250	2,187
CO	3,314	2,886	3,830	3,370	2,298	2,315
CT	2,954	3,114	3,088	3,201	2,429	2,468
FL	10,036	10,166	10,683	10,753	2,284	2,232
GA	11,800	11,737	21,002	20,775	2,181	2,108
HI	552	588	580	616	2,086	1,899
IL	3,121	3,091	3,432	3,387	2,331	2,155
IN	22,107	22,377	22,743	23,129	2,335	2,235
IA	26,399	30,336	27,242	31,106	2,247	2,324
ME	4,359	3,796	4,472	3,870	2,393	2,295
MD	3,036	2,898	3,493	3,293	2,405	2,126
MI	5,929	5,904	6,206	6,155	2,257	2,307
MN	12,138	11,753	12,831	12,473	2,198	2,157
MS	1,765	1,797	6,675	6,652	2,022	2,029
MO	4,724	5,265	6,182	6,578	2,232	2,250
NE	11,700	11,732	11,850	11,832	2,186	2,147
NY	3,657	3,902	3,851	4,212	2,337	2,350
NC	3,587	3,554	11,429	11,093	1,934	1,981
OH	30,778	28,852	31,454	29,459	2,283	2,186
OK	1,967	1,897	3,961	3,923	1,944	1,937
OR	2,737	2,751	2,916	2,919	2,366	2,330
PA	21,306	22,482	22,720	23,931	2,271	2,328
SC	3,846	4,387	4,764	5,287	2,204	2,156
SD	1,899	1,987	2,129	2,187	2,208	2,338
TX	13,830	14,333	17,899	18,624	2,252	2,185
VA	1,580	1,484	3,559	3,366	2,023	2,020
WA	4,616	4,896	4,736	4,969	2,310	2,254
WI	3,686	3,873	4,340	4,470	2,419	2,416
30 Sts	250,318	253,566	309,223	310,953	2,215	2,190
Oth Sts ²	14,127	15,217	19,605	20,955	2,193	2,219
US	264,445	268,783	328,828	331,908	2,214	2,192

¹ Includes all layers and eggs produced in both table egg and hatching egg flocks regardless of size.

² Estimates for individual States are not available.

**Egg Production: By Type, State, and United States,
November 1999-00**

State	Total Production		Table Eggs ¹		Hatching Eggs ¹	
	1999	2000	1999	2000	1999	2000
	<i>Million Eggs</i>	<i>Million Eggs</i>	<i>Million Eggs</i>	<i>Million Eggs</i>	<i>Million Eggs</i>	<i>Million Eggs</i>
AL	204	192	80	64	124	128
AR	292	294	108	118	184	176
CA	546	518				
CO	85	75				
CT	72	74				
FL	230	234	219	224	11	10
GA	442	421	263	252	179	169
HI	11.6	11.3	11.6	11.3	0	0
IL	83	77	78	73	5	4
IN	498	494	486	481	12	13
IA	588	674				
ME	107	87				
MD	78	68	71	61	7	7
MI	136	135				
MN	267	261	259	252	8	9
MS	132	129	41	43	91	86
MO	137	139				
NE	249	247	249	247	0	0
NY	86	95				
NC	212	208	87	85	125	123
OH	687	620				
OK	76	73	44	43	32	30
OR	65	68	64	67	1	1
PA	509	557	493	541	16	16
SC	102	112	85	95	17	17
SD	47	50	47	50	0	0
TX	383	382				
VA	69	69	36	38	33	31
WA	105	108				
WI	98	107				
30 Sts	6,597	6,579	5,620	5,632	977	947
Oth Sts ²	420	448	347	357	73	91
US	7,017	7,027	5,967	5,989	1,050	1,038

¹ Data by type of flock not shown for some States to avoid disclosing individual operations.

² Estimates for individual States are not available.

**Egg Production: By Type, State, and United States,
December 1999-00**

State	Total Production		Table Eggs ¹		Hatching Eggs ¹	
	1999	2000	1999	2000	1999	2000
	<i>Million Eggs</i>	<i>Million Eggs</i>	<i>Million Eggs</i>	<i>Million Eggs</i>	<i>Million Eggs</i>	<i>Million Eggs</i>
AL	207	197	79	62	128	135
AR	304	301	116	124	188	177
CA	561	521				
CO	88	78				
CT	75	79				
FL	244	240	233	228	11	12
GA	458	438	276	263	182	175
HI	12.1	11.7	12.1	11.7	0	0
IL	80	73	75	68	5	5
IN	531	517	519	503	12	14
IA	612	723				
ME	107	89				
MD	84	70	76	63	8	7
MI	140	142				
MN	282	269	273	259	9	10
MS	135	135	43	44	92	91
MO	138	148				
NE	259	254	259	254	0	0
NY	90	99				
NC	221	219	90	86	131	133
OH	718	644				
OK	77	76	45	44	32	32
OR	69	68	67	67	2	1
PA	516	557	498	539	18	18
SC	105	114	88	97	17	17
SD	47	51	47	51	0	0
TX	403	407				
VA	72	68	37	36	35	32
WA	109	112				
WI	105	108				
30 Sts	6,850	6,809	5,843	5,819	1,007	990
Oth Sts ²	430	465	355	377	74	89
US	7,279	7,275	6,198	6,196	1,081	1,079

¹ Data by type of flock not shown for some States to avoid disclosing individual operations.

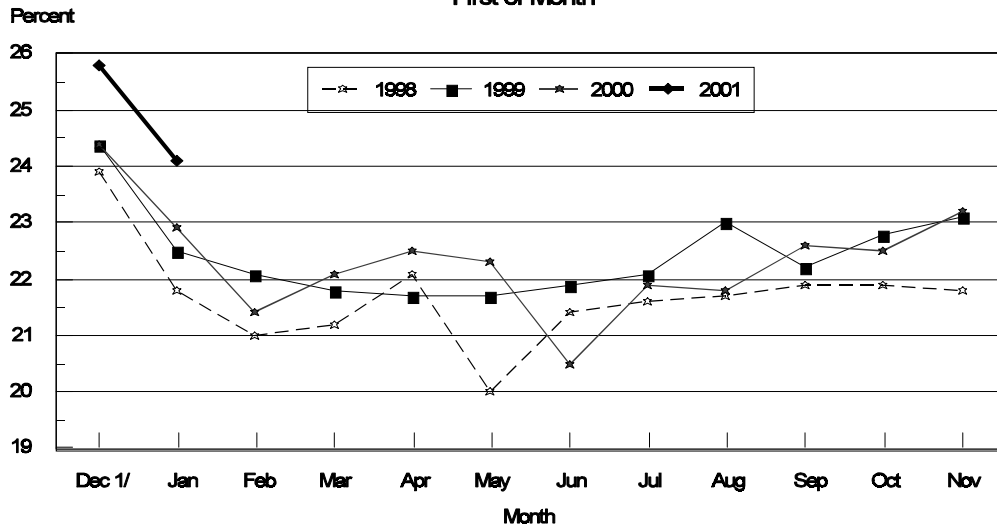
² Estimates for individual States are not available.

**Forced Molt: Percent of All Layers by Month,
United States, 2000-01¹**

Month	Percent Being Molted		Percent with Molt Completed	
	2000	2001	2000	2001
	<i>Percent</i>	<i>Percent</i>	<i>Percent</i>	<i>Percent</i>
Jan	2.9	3.4	22.9	24.1
Feb	5.0		21.4	
Mar	3.7		22.1	
Apr	2.2		22.5	
May	4.0		22.3	
Jun	5.8		20.5	
Jul	4.8		21.9	
Aug	4.3		21.8	
Sep	4.6		22.6	
Oct	5.7		22.5	
Nov	4.0		23.2	
Dec	2.9		25.8	

¹ As of first of month.

**All Layers: United States
Percent Molt Completed, 1998 - 2001
First of Month**



1/ Previous year

**Forced Molt: Percent of All Layers by State
and United States, January 2000-01 ¹**

State	Percent Being Molted		Percent with Molt Completed	
	2000 <i>Percent</i>	2001 <i>Percent</i>	2000 <i>Percent</i>	2001 <i>Percent</i>
AL	1.5	2.5	13.0	8.5
AR	1.0	1.0	8.0	13.0
CA	4.0	9.0	39.0	38.9
CO	0.0	2.5	24.0	12.5
CT	0.0	0.0	11.5	1.0
FL	3.0	2.0	42.0	35.0
GA	3.0	2.0	15.5	22.5
HI	6.5	6.5	47.0	44.5
IL	1.5	7.0	8.5	33.0
IN	2.0	4.0	32.0	33.5
IA	5.0	3.5	33.0	31.5
ME	0.0	0.0	0.0	0.0
MD	3.0	0.0	37.0	36.0
MI	6.5	2.5	29.5	27.5
MN	1.5	2.0	29.0	31.0
MS	2.0	0.0	17.5	11.5
MO	0.0	3.5	25.0	9.0
NE	6.0	10.0	27.5	21.5
NY	1.0	2.5	4.0	4.5
NC	1.0	0.0	10.5	8.5
OH	0.5	3.0	13.0	26.5
OK	1.5	1.0	10.0	7.0
OR	6.5	6.5	32.5	36.5
PA	4.5	5.5	21.0	18.5
SC	5.5	3.5	27.5	21.5
SD	4.0	4.0	28.0	31.5
TX	2.5	0.5	21.0	20.5
VA	5.5	6.5	14.5	15.5
WA	4.5	7.5	44.0	42.0
WI	6.0	0.0	19.0	31.0
30 Sts	2.8	3.5	23.2	24.1
Oth Sts ²	4.5	2.3	18.9	24.7
US	2.9	3.4	22.9	24.1

¹ As of first of month.

² Estimates for individual States are not available.

**Hatchery Production: Eggs in Incubators, Chicks Hatched,
and Placements by Type, United States, December-January 2000-01**

Item	2000	2001	2001 as % of 2000
	<i>1,000</i>	<i>1,000</i>	<i>Percent</i>
Egg-Type			
Eggs in Incubators on Jan 1	30,465	33,922	111
Chicks Hatched During Dec ¹	33,045	35,008	106
Chicks Hatched Jan thru Dec ¹	450,928	429,834	95
Pullets Hatched During Jan for Intended Placements in Hatchery Supply Flocks 7-18 Month Earlier ²	175 3,179	324 3,078	185 97
Broiler-Type			
Eggs in Incubators on Jan 1	623,774	610,712	98
Chicks Hatched During Dec ¹	748,438	738,796	99
Chicks Hatched Jan thru Dec ¹	8,715,704	8,782,152	101
Pullets Hatched During Jan for Intended Placements in Hatchery Supply Flocks 7-15 Months Earlier ³	6,993 64,426	6,429 63,339	92 98

¹ Previous year.

² 2000 includes pullet chicks hatched Jun 1999 through May 2000.

³ 2000 includes pullet chicks hatched Sep 1999 through May 2000.

**Egg-Type Eggs in Incubators: By Region and United States,
January 1, 2000-01**

Geographic Division	2000	2001	2001 as % of 2000
	<i>1,000</i>	<i>1,000</i>	<i>Percent</i>
North Atlantic	5,792	5,767	100
E North Central	7,715	7,869	102
W North Central	5,735	6,818	119
South Atlantic	3,352	3,646	109
South Central	3,028	5,232	173
West	4,843	4,590	95
US	30,465	33,922	111

Regional Listing:

North Atlantic = CT, ME, MA, NH, NJ, NY, PA, RI, VT.

E North Central = IL, IN, MI, OH, WI.

W North Central = IA, KS, MN, MO, NE, ND, SD.

South Atlantic = DE, FL, GA, MD, NC, SC, VA, WV.

South Central = AL, AR, KY, LA, MS, OK, TN, TX.

West = AK, AZ, CA, CO, HI, ID, MT, NM, NV, OR, UT, WA, WY.

**Egg-Type Chicks Hatched: By State and United States,
December 1999-00**

State	December			Jan-Dec		
	1999	2000	2000 as % of 1999	1999	2000	2000 as % of 1999
	<i>1,000</i>	<i>1,000</i>	<i>Percent</i>	<i>1,000</i>	<i>1,000</i>	<i>Percent</i>
AR	727	738	102	9,750	9,932	102
FL	885	1,030	116	12,586	12,036	96
GA	1,652	2,133	129	23,051	23,282	101
IN	5,844	6,170	106	83,570	70,911	85
IA	4,989	4,518	91	57,739	63,091	109
KS	267	173	65	3,675	3,101	84
MN	1,156	1,368	118	20,746	20,144	97
MO	306	306	100	4,058	4,058	100
PA	4,757	5,418	114	64,583	64,101	99
Oth Sts ¹	12,462	13,154	106	171,170	159,178	93
US	33,045	35,008	106	450,928	429,834	95

¹ Not published separately to avoid disclosing data for individual operations.

Egg-Type Chicks Hatched: By Month, United States, 1998-00

Month	By Months				Cumulative			
	1998	1999	2000	2000 as % of 1999	1998	1999	2000	2000 as % of 1999
	<i>1,000</i>	<i>1,000</i>	<i>1,000</i>	<i>Percent</i>	<i>1,000</i>	<i>1,000</i>	<i>1,000</i>	<i>Percent</i>
Jan	37,168	35,242	34,125	97	37,168	35,242	34,125	97
Feb	34,597	36,367	35,491	98	71,765	71,609	69,616	97
Mar	40,604	41,172	39,560	96	112,369	112,781	109,176	97
Apr	39,057	41,950	36,621	87	151,426	154,731	145,797	94
May	39,206	40,726	40,879	100	190,632	195,457	186,676	96
Jun	39,323	41,474	36,575	88	229,955	236,931	223,251	94
Jul	35,576	34,275	33,091	97	265,531	271,206	256,342	95
Aug	33,398	35,454	34,317	97	298,929	306,660	290,659	95
Sep	37,959	39,287	36,290	92	336,888	345,947	326,949	95
Oct	34,667	39,044	35,231	90	371,555	384,991	362,180	94
Nov	31,217	32,892	32,646	99	402,772	417,883	394,826	94
Dec	35,501	33,045	35,008	106	438,273	450,928	429,834	95

**Intended Placements: Egg-Type Pullet Chicks for Hatchery Supply
Flocks by Month and Total, United States, 1998-00¹**

Month	Pullet Chicks Hatched			2000 as % of 1999	Cumulative Potential Placements Relative to Current Supply Flocks 7-18 Months Earlier ²		
	1998	1999	2000		1999	2000	2001
	<i>1,000</i>	<i>1,000</i>	<i>1,000</i>	<i>Percent</i>	<i>1,000</i>	<i>1,000</i>	<i>1,000</i>
Jan	189	166	212	128	3,029	3,012	3,114
Feb	250	267	251	94	3,120	2,945	3,235
Mar	225	257	286	111	3,020	3,078	3,192
Apr	333	287	309	108	2,942	2,981	3,242
May	192	283	343	121	3,044	2,900	3,248
Jun	354	187	223	119	3,132	2,945	3,393
Jul	298	231	352	152	3,108	2,937	3,542
Aug	185	318	275	86	3,085	2,983	
Sep	324	227	277	122	3,102	2,967	
Oct	358	277	283	102	3,134	2,996	
Nov	217	262	407	155	3,088	3,018	
Dec	183	175	324	185	3,179	3,078	
Total	3,108	2,937	3,542	121			

¹ Reported by leading breeders. Coverage may not be 100 percent. Includes expected pullet chicks from eggs sold during the preceding month at the rate of 125 pullet chicks per 30 dozen case of eggs.

² For December 2000, includes breeder pullet chicks hatched Jun 1999 through May 2000. The 7-18 months represent the first laying cycle. Molting and additional laying cycles will increase the cumulative potential placements.

**Broiler-Type Eggs in Incubators: By Region
and United States, January 1, 2000-01**

Geographic Division	2000	2001	2001 as % of 2000
	<i>1,000</i>	<i>1,000</i>	<i>Percent</i>
North Atlantic	11,961	11,426	96
E North Central	8,124	6,951	86
W North Central	20,437	18,419	90
South Atlantic	234,443	230,208	98
South Central	325,116	319,489	98
West	23,693	24,219	102
US	623,774	610,712	98

**Broiler-Type Chicks Hatched: By State
and United States, December 1999-00**

State	December			Jan-Dec		
	1999	2000	2000 as % of 1999	1999	2000	2000 as % of 1999
	<i>1,000</i>	<i>1,000</i>	<i>Percent</i>	<i>1,000</i>	<i>1,000</i>	<i>Percent</i>
AL	100,713	101,969	101	1,146,613	1,214,283	106
AR	110,968	107,517	97	1,277,737	1,284,432	101
DE	15,792	14,723	93	187,884	177,108	94
FL	9,677	8,827	91	115,344	112,548	98
GA	110,801	110,410	100	1,308,754	1,306,619	100
MD	31,470	29,025	92	364,365	357,175	98
MS	65,048	65,767	101	763,784	772,264	101
NC	63,631	64,762	102	749,014	752,045	100
PA	12,795	12,841	100	151,359	151,328	100
SC	16,963	17,062	101	196,068	199,330	102
TX	50,161	53,568	107	575,631	615,214	107
VA	23,420	22,617	97	281,461	279,575	99
CA TN & WV	40,899	40,302	99	474,621	469,661	99
15 Sts ¹	652,338	649,390	100	7,592,635	7,691,582	101
Oth Sts ²	96,100	89,406	93	1,123,069	1,090,570	97
US	748,438	738,796	99	8,715,704	8,782,152	101

¹ States in the weekly hatchery production estimating program.

² Not published separately to avoid disclosing data for individual operations.

Broiler Chicks Hatched: By Month, United States, 1998-00

Month	By Months				Cumulative			
	1998	1999	2000	2000 as % of 1999	1998	1999	2000	2000 as % of 1999
	<i>1,000</i>	<i>1,000</i>	<i>1,000</i>	<i>Percent</i>	<i>1,000</i>	<i>1,000</i>	<i>1,000</i>	<i>Percent</i>
Jan	711,373	735,768	749,375	102	711,373	735,768	749,375	102
Feb	645,180	662,604	700,967	106	1,356,553	1,398,372	1,450,342	104
Mar	730,316	755,804	756,351	100	2,086,869	2,154,176	2,206,693	102
Apr	708,260	734,734	743,516	101	2,795,129	2,888,910	2,950,209	102
May	739,319	766,422	775,181	101	3,534,448	3,655,332	3,725,390	102
Jun	717,967	744,372	748,008	100	4,252,415	4,399,704	4,473,398	102
Jul	722,715	751,627	739,892	98	4,975,130	5,151,331	5,213,290	101
Aug	715,650	741,716	739,931	100	5,690,780	5,893,047	5,953,221	101
Sep	695,281	700,016	704,901	101	6,386,061	6,593,063	6,658,122	101
Oct	693,204	697,434	711,012	102	7,079,265	7,290,497	7,369,134	101
Nov	674,851	676,769	674,222	100	7,754,116	7,967,266	8,043,356	101
Dec	737,822	748,438	738,796	99	8,491,938	8,715,704	8,782,152	101

**Intended Placements: Broiler-Type Pullet Chicks for Hatchery
Supply Flocks by Month and Total, 1998-00 ¹**

Month	Pullet Chicks Hatched			2000 as % of 1999	Cumulative Potential Placements Relative to Current Supply Flocks 7-15 Months Earlier ²		
	1998	1999	2000		1999	2000	2001
	<i>1,000</i>	<i>1,000</i>	<i>1,000</i>	<i>Percent</i>	<i>1,000</i>	<i>1,000</i>	<i>1,000</i>
US Place- ments							
Jan	6,765	7,059	6,861	97	59,403	64,139	63,298
Feb	6,328	6,882	7,001	102	59,937	64,344	62,487
Mar	6,776	7,284	7,310	100	60,699	64,697	62,791
Apr	6,687	7,038	6,764	96	61,775	64,663	62,267
May	7,062	7,736	7,435	96	61,893	64,725	62,100
Jun	6,932	7,041	6,829	97	62,877	64,827	62,204
Jul	6,788	7,088	6,310	89	63,005	64,536	61,323
Aug	7,109	7,665	7,288	95	63,377	64,359	
Sep	7,328	6,870	6,469	94	63,197	63,624	
Oct	6,883	7,121	6,694	94	63,549	63,893	
Nov	7,312	6,984	7,105	102	63,799	63,569	
Dec	6,904	6,993	6,429	92	64,426	63,339	
Annual Total	82,874	85,761	82,495	96			
Total Place- ments ³							
Jan	8,613	8,679	8,069	93			
Feb	8,273	8,473	8,302	98			
Mar	8,760	8,863	8,798	99			
Apr	8,300	8,572	8,522	99			
May	8,957	9,463	8,917	94			
Jun	8,757	8,333	8,201	98			
Jul	8,423	8,342	7,621	91			
Aug	8,686	8,983	8,657	96			
Sep	8,985	8,044	8,042	100			
Oct	8,756	8,223	8,260	100			
Nov	9,412	8,220	8,702	106			
Dec	8,830	8,299	7,614	92			
Annual Total	104,752	102,494	99,705	97			

¹ Reported by leading breeders. Coverage may not be 100 percent. Includes expected pullet chicks from eggs sold during the preceding month at the rate of 125 pullet chicks per 30 dozen case of eggs.

² For Dec 2000, includes breeder pullet chicks hatched Sep 1999 through May 2000.

³ U.S. production of intended placements worldwide.

Procedures and Reliability

Data Sources: Primary data for the "**Chickens and Eggs**" report are from weekly and/or monthly questionnaires sent to producers. An attempt is made to collect information for layer and egg estimates from each known contractor and independent producer who has over 30,000 table egg layers. Coverage for operations with less than 30,000 table egg layers are estimated each month based on data reported in December. Approximately 900 contractors, independent egg producers, and started pullet operations are contacted each month. All known hatcheries, approximately 330, are contacted for information on a weekly and/or monthly basis.

Revisions: The previous month's estimates are subject to revision if late reports or corrected data indicates a different level. Additionally, revisions needed after the monthly report will be made at the end of the marketing year and published in the annual summaries of "**Chickens and Eggs Summary**" and "**Hatchery Production**".

Procedures and Reliability: Operations are mailed a questionnaire and given adequate time to respond by mail. Those that do not respond are phoned. Great care is exercised to ensure that all operations are accounted for during each survey period. However, there are usually missing reports that must be accounted for in the estimates.

Sound statistical methodology is employed to derive estimates from the reported data. All data are checked for unusual values. All operations' data are compared to their own past operating profiles and also to trends from other operations. Data for missing operations are estimated based on similar operations or historical data. Survey data are subject to non-sampling errors such as omissions and mistakes in reporting and in processing. While these errors cannot be measured directly, they are minimized by reviewing all data for consistency and reasonableness.

Egg-type chicks hatched are comprised of all chicks of egg-type domesticated breeds including males and chicks destined for hatchery supply flocks and research purposes. The relationship of chicks hatched to chicken inventory and poultry marketings is carefully monitored. The disposition of egg-type chicks hatched prior to placement into the laying flock can vary significantly, which can make comparisons to changes in layer inventory inconsistent over time.

Intended placement data reported by leading breeders include pullet chicks expected from eggs sold the preceding month. The breeders in this report account for a large percentage of replacement pullets for hatchery supply flocks. Production of replacement pullets by these breeders indicates the number of pullets available to hatchery egg supply flocks several months before the pullets will actually move into the flocks. Beginning with the January 1996 publication the broiler-type cumulative potential placements went from 7-14 months earlier to 7-15 months earlier. The egg-type cumulative potential placements of 7-18 months represent the first laying cycle. Molting and additional laying cycles will increase the cumulative potential placements of egg-type hatching flocks.

The next "Chickens and Eggs" report will be released at 3 p.m. ET on February 23, 2001.

The United States Department of Agriculture (USDA) prohibits discrimination in all its programs on the basis of race, color, national origin, gender, religion, age, disability, political beliefs, sexual orientation, and marital or family status. (Not all prohibited bases apply to all programs.) Persons with disabilities who require alternative means for communication of program information (braille, large print, audiotape, etc.) should contact the USDA's TARGET Center at 202-720-2600 (voice and TDD).

To file a complaint of discrimination, write USDA, Director, Office of Civil Rights, Room 326-W, Whitten Building, 14th and Independence Avenue, SW, Washington, D.C., 20250-9410, or call 202-720-5964 (voice or TDD). USDA is an equal opportunity provider and employer.

ACCESS TO REPORTS!!

For your convenience, there are several ways to obtain NASS reports, data products, and services:

INTERNET ACCESS

All NASS reports are available free of charge on the worldwide Internet. For access, connect to the Internet and go to the NASS Home Page at: <http://www.usda.gov/nass/>. Select "Today's Reports" or Publications and then Reports by Calendar or Publications and then Search, by Title or Subject.

E-MAIL SUBSCRIPTION

There are two options for subscribing via e-mail. All NASS reports are available by subscription free of charge direct to your e-mail address. 1) Starting with the NASS Home Page at <http://www.usda.gov/nass/>, click on **Publications**, then click on the **Subscribe by E-mail** button which takes you to the page describing e-mail delivery of reports. Finally, click on **Go to the Subscription Page** and follow the instructions. 2) If you do NOT have Internet access, send an e-mail message to: usda-reports@usda.mannlib.cornell.edu. In the body of the message type the word: **list**.

AUTOFAX ACCESS

NASSFax service is available for some reports from your fax machine. Please call 202-720-2000, using the handset attached to your fax. Respond to the voice prompts. Document 0411 is a list of available reports.

----- PRINTED REPORTS OR DATA PRODUCTS

CALL OUR TOLL-FREE ORDER DESK: 800-999-6779 (U.S. and Canada)
Other areas, please call 703-834-0125 FAX: 703-834-0110
(Visa, MasterCard, check, or money order acceptable for payment.)

ASSISTANCE

For **assistance** with general agricultural statistics or further information about NASS or its products or services, contact the **Agricultural Statistics Hotline** at **800-727-9540**, 7:30 a.m. to 4:00 p.m. ET, or e-mail: nass@nass.usda.gov.

Agricultural Outlook Forum 2001



February 22-23, 2001
Arlington, Virginia

USDA's 77th outlook conference will offer timely forecasts of farm prospects and insight on developments affecting the farm economy. The program will feature top business leaders and officials. Networking opportunities abound at this popular event, attended by over 1,300 people last February.

Policy Debate. Future farm policy will be a hot topic during 2001. The Forum will open with high-level panels on the next farm bill and world trade talks. Focus sessions during the two-day program will preview key policy issues on next year's agenda.

Farm Prospects. Attendees will hear leading analysts discuss the 2001 commodity outlook and industry trends, and receive USDA's latest 10-year projections.

Act Now. Get registration details and program updates at the Forum website. Can't attend in person? Sign up now to get speeches by e-mail after the Forum, or download them from the website.

agforum@oce.usda.gov

(202) 720-3050

<http://www.usda.gov/oce/waob/oc2001/press.htm>