

Chickens and Eggs

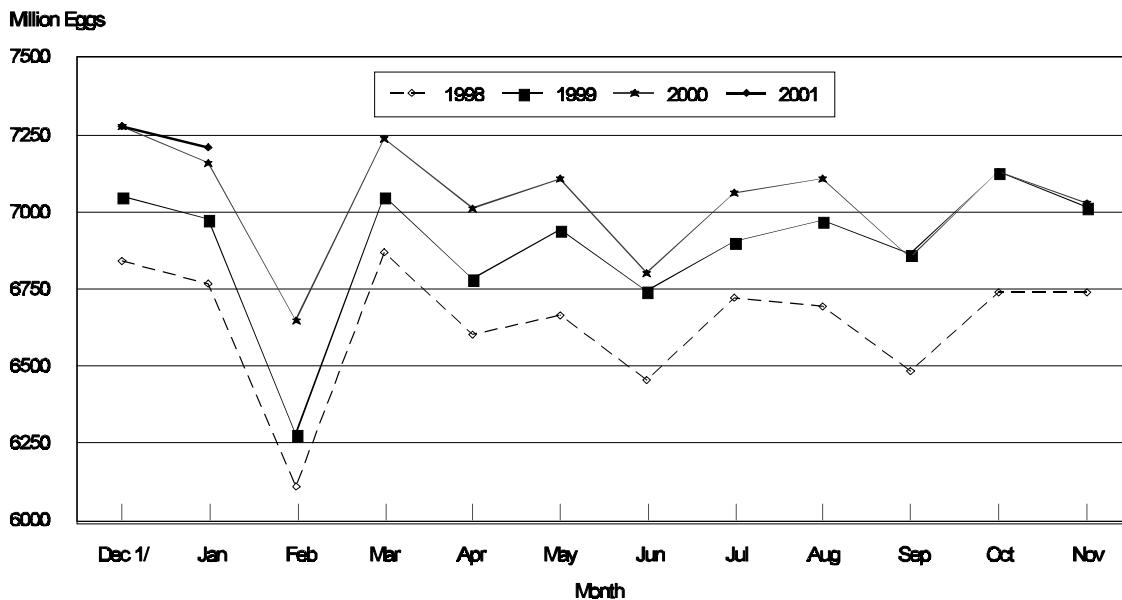
Released February 23, 2001, by the National Agricultural Statistics Service (NASS), Agricultural Statistics Board, U.S. Department of Agriculture. For information on "Chickens and Eggs" call Tom Kruchten at (202) 690-4870. For information on Hatch call Jody Roberts at (202) 690-8632, office hours 7:30 a.m. to 4:00 p.m. ET.

January Egg Production Up 1 Percent

U.S. egg production totaled 7.21 billion during January 2001, up 1 percent from last year. Production included 6.11 billion table eggs and 1.10 billion hatching eggs, of which 1.03 billion were broiler-type and 67.0 million were egg-type. The total number of layers during January 2001 averaged 333 million, up 1 percent from the total average number of layers during January 2000. January egg production per 100 layers was 2,164 eggs, down 1 percent from 2,178 eggs in January 2000.

January 2001 contained 23 weekdays, 2 holidays and four Saturdays, compared to 21 weekdays, 2 holidays and 5 Saturdays in January 2000.

All Egg Production By Months United States, 1998 - 2001



1/ Previous Year

All layers in the U.S. on February 1, 2001, totaled 335 million, up 2 percent from a year ago. The 335 million layers consisted of 276 million layers producing table or commercial type eggs, 56.2 million layers producing broiler-type hatching eggs, and 2.81 million layers producing egg-type hatching eggs. Rate of lay per day on February 1, 2001, averaged 69.1 eggs per 100 layers, down slightly from the 69.4 eggs a year ago.

Laying flocks in the 30 major egg producing States produced 6.75 billion eggs during January 2001, up slightly from January 2000. The average number of layers during January, at 312 million, was up 1 percent from a year earlier.

Individual State estimates are available for the 30 major egg producing States. These States are listed on page 8 of this release and account for approximately 94 percent of the total U.S. egg production. Production for the other States are grouped into an "Other States" category and combined with the 30 States published individually to obtain a U.S. estimate. Individual State estimates for "Other States" are available annually in the "**Chickens and Eggs Summary**" report.

Egg-Type Chicks Hatched Up 11 Percent

Egg-type chicks **hatched** during January totaled 38 million, up 11 percent from January 2000. **Eggs in incubators** totaled 35.4 million on February 1, 2001, up 8 percent from a year ago.

Domestic placements of **egg-type pullet chicks for future hatchery supply flocks** by leading breeders totaled 381,000 during January 2001, up 80 percent from January 2000.

Broiler Hatch Down 2 Percent

The January 2000 **hatch** of broiler-type chicks, at 734 million, was down 2 percent from January of the previous year. There were 613 million **eggs in incubators** on February 1, 2001, down 1 percent from a year earlier.

Leading breeders placed 6.69 million **broiler-type pullet chicks for future domestic hatchery supply flocks** during January 2001, down 3 percent from January 2000.

**All Layers: Average Number on Hand During the Month,
United States, 1998-01**

Month	1998	1999	2000	2001
	<i>1,000 Layers</i>	<i>1,000 Layers</i>	<i>1,000 Layers</i>	<i>1,000 Layers</i>
Dec ¹	311,898	321,972	328,828	331,962
Jan	311,906	322,356	328,557	333,247
Feb	313,285	322,827	329,843	
Mar	314,141	322,782	330,862	
Apr	311,957	321,539	329,223	
May	309,655	320,510	326,326	
Jun	309,206	320,441	324,957	
Jul	308,967	319,819	325,563	
Aug	309,291	320,188	325,753	
Sep	311,358	322,409	326,237	
Oct	315,222	325,287	328,178	
Nov	319,625	328,268	330,678	

¹ December preceding year.

**Eggs: Production During the Month by Type,
United States, 2000-01**

Month	Total Eggs		Table Eggs		Hatching Eggs	
	2000	2001	2000	2001	2000	2001
	<i>Million Eggs</i>	<i>Million Eggs</i>	<i>Million Eggs</i>	<i>Million Eggs</i>	<i>Million Eggs</i>	<i>Million Eggs</i>
Dec ¹	7,279	7,279	6,198	6,200	1,081	1,079
Jan	7,157	7,210	6,070	6,111	1,087	1,099
Feb	6,648		5,625		1,023	
Mar	7,234		6,110		1,124	
Apr	7,013		5,911		1,102	
May	7,104		5,970		1,134	
Jun	6,801		5,722		1,079	
Jul	7,061		5,952		1,109	
Aug	7,104		6,015		1,089	
Sep	6,854		5,820		1,034	
Oct	7,130		6,063		1,067	
Nov	7,027		5,989		1,038	
During Year	84,412	14,489	71,445	12,311	12,967	2,178

¹ December preceding year.

**Layers and Eggs: Layers on Hand and Eggs Produced by Type,
and Forced Molt, United States, December-January 1999-01**

Item	Unit	1999	2000	2000 as % of 1999
Layers During Dec	1,000			
All Layers		328,828	331,962	101
Table Egg Type		270,371	274,782	102
Hatching Egg Type		58,457	57,180	98
Broiler-Type Hatching		55,722	54,456	98
Egg-Type Hatching		2,735	2,724	100
Eggs per 100 Layers During Dec	Number			
All Layers		2,214	2,193	99
Table Egg Type		2,292	2,256	98
Hatching Egg Type		1,849	1,887	102
Broiler-Type Hatching		1,825	1,866	102
Egg-Type Hatching		2,340	2,313	99
Eggs Produced During Dec	Million			
All Layers		7,279	7,279	100
Table Egg Type		6,198	6,200	100
Hatching Egg Type		1,081	1,079	100
Broiler-Type Hatching		1,017	1,016	100
Egg-Type Hatching		64	63	98
		2000	2001	2001 as % of 2000
Layers on Jan 1	1,000			
All Layers		328,307	331,558	101
Table Egg Type		269,919	273,557	101
Hatching Egg Type		58,388	58,001	99
Broiler-Type Hatching		55,658	55,156	99
Egg-Type Hatching		2,730	2,845	104
Eggs per 100 Layers on Jan 1	Number			
All Layers		71.0	70.4	99
Table Egg Type		73.5	72.5	99
Hatching Egg Type		59.7	60.3	101
Broiler-Type Hatching		58.9	59.6	101
Egg-Type Hatching		77.3	75.3	97
Forced Molt Layers on Jan 1	Percent			
Percent Being Molted		2.9	3.4	117
Percent with Molt Completed		22.9	24.1	105
Layers Sold for Slaughter During Dec	1,000	16,549	16,271	98
Layers Rendered, Died, Destroyed, Composted or Disappeared For Any Reason During Dec		1,820	3,862	212
Pullets Less Than 20 Weeks of Age, Jan 1	1,000	97,767	92,554	95
Pullets Added During Dec ¹	1,000	20,088	22,256	111

¹ Pullet chicks one day old added to pullet flocks.

**Layers and Eggs: Layers on Hand and Eggs Produced by Type,
and Forced Molt, United States, January-February 2000-01**

Item	Unit	2000 ¹	2001	2001 as % of 2000
Layers During Jan	1,000			
All Layers		328,557	333,247	101
Table Egg Type		270,009	274,751	102
Hatching Egg Type		58,548	58,496	100
Broiler-Type Hatching		55,834	55,665	100
Egg-Type Hatching		2,714	2,831	104
Eggs per 100 Layers During Jan	Number			
All Layers		2,178	2,164	99
Table Egg Type		2,248	2,224	99
Hatching Egg Type		1,857	1,879	101
Broiler-Type Hatching		1,830	1,854	101
Egg-Type Hatching		2,395	2,367	99
Eggs Produced During Jan	Million			
All Layers		7,157	7,210	101
Table Egg Type		6,070	6,111	101
Hatching Egg Type		1,087	1,099	101
Broiler-Type Hatching		1,022	1,032	101
Egg-Type Hatching		65	67	103
Layers on Feb 1	1,000			
All Layers		328,767	334,894	102
Table Egg Type		270,075	275,923	102
Hatching Egg Type		58,692	58,971	100
Broiler-Type Hatching		55,998	56,161	100
Egg-Type Hatching		2,694	2,810	104
Eggs per 100 Layers on Feb 1	Number			
All Layers		69.4	69.1	100
Table Egg Type		71.5	70.9	99
Hatching Egg Type		59.7	60.8	102
Broiler-Type Hatching		58.9	60.0	102
Egg-Type Hatching		76.1	77.2	101
Forced Molt Layers, Feb 1	Percent			
Percent Being Molted		5.0	5.2	104
Percent with Molt Completed		21.4	22.4	105
Layers Sold for Slaughter During Jan	1,000	16,754	15,314	91
Layers Rendered, Died, Destroyed, Composted or Disappeared For Any Reason During Jan	1,000	4,163	3,982	96
Pullets Less Than 20 Weeks of Age, Feb 1	1,000	96,616	96,964	100
Pullets Added During Jan ²	1,000	22,181	26,388	119

¹ Revised.

² Pullet chicks one day old added to pullet flocks.

**Layers and Eggs: Layers on Hand and Eggs Produced by Type,
and Forced Molt, 30 Selected States, December-January 1999-01 ¹**

Item	Unit	1999	2000	2000 as % of 1999
Layers During Dec	1,000			
All Layers		309,223	311,007	101
Table Egg Type		255,198	258,445	101
Hatching Egg Type		54,025	52,562	97
Broiler-Type Hatching		51,402	49,929	97
Egg-Type Hatching		2,623	2,633	100
Eggs per 100 Layers During Dec	Number			
All Layers		2,215	2,190	99
Table Egg Type		2,290	2,252	98
Hatching Egg Type		1,864	1,883	101
Broiler-Type Hatching		1,838	1,861	101
Egg-Type Hatching		2,364	2,317	98
Eggs Produced During Dec	Million			
All Layers		6,850	6,812	99
Table Egg Type		5,843	5,822	100
Hatching Egg Type		1,007	990	98
Broiler-Type Hatching		945	929	98
Egg-Type Hatching		62	61	98
		2000	2001	2001 as % of 2000
Layers on Jan 1	1,000			
All Layers		308,729	310,650	101
Table Egg Type		254,748	257,202	101
Hatching Egg Type		53,981	53,448	99
Broiler-Type Hatching		51,358	50,692	99
Egg-Type Hatching		2,623	2,756	105
Eggs per 100 Layers on Jan 1	Number			
All Layers		71.0	70.3	99
Table Egg Type		73.4	72.3	99
Hatching Egg Type		59.7	60.3	101
Broiler-Type Hatching		58.8	59.5	101
Egg-Type Hatching		77.4	75.6	98
Forced Molt Layers on Jan 1	Percent			
Percent Being Molted		2.8	3.5	125
Percent with Molt Completed		23.2	24.1	104
Layers Sold for Slaughter During Dec	1,000	15,894	15,273	96
Layers Rendered, Died, Destroyed, Composted or Disappeared For Any Reason During Dec	1,000	1,833	3,711	202
Pullets Less Than 20 Weeks of Age, Jan 1	1,000	91,630	85,810	94
Pullets Added During Dec ²	1,000	19,324	20,778	108

¹ The 30 States are listed in the table on page 8.

² Pullet chicks one day old added to pullet flocks.

Layers and Eggs: Layers on Hand and Eggs Produced by Type, and Forced Molt, 30 Selected States, January-February, 2000-01 ¹

Item	Unit	2000 ²	2001	2001 as % of 2000
Layers During Jan	1,000			
All Layers		308,962	312,260	101
Table Egg Type		254,855	258,405	101
Hatching Egg Type		54,107	53,855	100
Broiler-Type Hatching		51,495	51,110	99
Egg-Type Hatching		2,612	2,745	105
Eggs per 100 Layers During Jan	1,000			
All Layers		2,177	2,162	99
Table Egg Type		2,246	2,220	99
Hatching Egg Type		1,852	1,881	102
Broiler-Type Hatching		1,823	1,855	102
Egg-Type Hatching		2,412	2,368	98
Eggs Produced During Jan	Million			
All Layers		6,725	6,750	100
Table Egg Type		5,723	5,737	100
Hatching Egg Type		1,002	1,013	101
Broiler-Type Hatching		939	948	101
Egg-Type Hatching		63	65	103
Layers on Feb 1	1,000			
All Layers		309,168	313,838	102
Table Egg Type		254,947	259,592	102
Hatching Egg Type		54,221	54,246	100
Broiler-Type Hatching		51,623	51,518	100
Egg-Type Hatching		2,598	2,728	105
Eggs per 100 Layers on Feb 1	Number			
All Layers		69.3	69.1	100
Table Egg Type		71.3	70.8	99
Hatching Egg Type		59.5	60.8	102
Broiler-Type Hatching		58.7	60.0	102
Egg-Type Hatching		76.0	77.3	102
Forced Molt Layers, Feb 1	Percent			
Percent Being Molted		4.9	4.9	100
Percent with Molt Completed		21.4	22.5	105
Layers Sold for Slaughter During Jan	1,000	15,841	14,593	92
Layers Rendered, Died, Destroyed, Composted or Disappeared For Any Reason During Jan	1,000	3,946	3,794	96
Pullets Less Than 20 Weeks of Age, Feb 1	1,000	90,693	90,739	100
Pullets Added During Jan ³	1,000	21,272	25,369	119

¹ The 30 States are listed in the table on page 8.

² Revised.

³ Pullet chicks one day old added to pullet flocks.

**Layers and Eggs: Layers on Hand and Eggs Produced by State
and United States, During December 1999-00**

State	Table Egg Layers in Flocks 30,000 and Above		All Layers ¹		Eggs per 100 for All Layers ¹	
	1999	2000	1999	2000	1999	2000
	<i>1,000</i>	<i>1,000</i>	<i>1,000</i>	<i>1,000</i>	<i>Number</i>	<i>Number</i>
AL	3,462	3,030	10,443	10,247	1,982	1,923
AR	5,151	5,514	15,782	15,227	1,926	1,977
CA	24,282	23,161	24,931	23,826	2,250	2,187
CO	3,314	2,886	3,830	3,370	2,298	2,315
CT	2,954	3,114	3,088	3,201	2,429	2,468
FL	10,036	10,166	10,683	10,753	2,284	2,232
GA	11,800	11,737	21,002	20,775	2,181	2,108
HI	552	588	580	616	2,086	1,899
IL	3,121	3,091	3,432	3,387	2,331	2,155
IN	22,107	22,377	22,743	23,129	2,335	2,235
IA	26,399	30,336	27,242	31,106	2,247	2,324
ME	4,359	3,796	4,472	3,870	2,393	2,295
MD	3,036	2,898	3,493	3,293	2,405	2,126
MI	5,929	5,904	6,206	6,155	2,257	2,307
MN	12,138	11,753	12,831	12,473	2,198	2,157
MS	1,765	1,797	6,675	6,649	2,022	2,030
MO	4,724	5,265	6,182	6,578	2,232	2,250
NE	11,700	11,732	11,850	11,832	2,186	2,147
NY	3,657	3,902	3,851	4,212	2,337	2,350
NC	3,587	3,554	11,429	11,093	1,934	1,974
OH	30,778	28,852	31,454	29,459	2,283	2,186
OK	1,967	1,897	3,961	3,923	1,944	1,937
OR	2,737	2,751	2,916	2,919	2,366	2,364
PA	21,306	22,482	22,720	23,931	2,271	2,328
SC	3,846	4,387	4,764	5,287	2,204	2,156
SD	1,899	2,067	2,129	2,267	2,208	2,338
TX	13,830	14,333	17,899	18,624	2,252	2,185
VA	1,580	1,484	3,559	3,366	2,023	2,020
WA	4,616	4,896	4,736	4,969	2,310	2,254
WI	3,686	3,873	4,340	4,470	2,419	2,416
30 Sts	250,318	253,623	309,223	311,007	2,215	2,190
Oth Sts ²	14,127	15,217	19,605	20,955	2,193	2,229
US	264,445	268,840	328,828	331,962	2,214	2,193

¹ Includes all layers and eggs produced in both table egg and hatching egg flocks regardless of size.

² Estimates for individual States are not available.

**Layers and Eggs: Layers on Hand and Eggs Produced by State
and United States, During January 2000-01**

State	Table Egg Layers in Flocks 30,000 and Above		All Layers ¹		Eggs per 100 for All Layers ¹	
	2000	2001	2000	2001	2000	2001
	<i>1,000</i>	<i>1,000</i>	<i>1,000</i>	<i>1,000</i>	<i>Number</i>	<i>Number</i>
AL	3,344	2,903	10,483	10,196	1,927	1,942
AR	5,081	5,466	15,509	15,571	1,954	1,965
CA	23,816	22,896	24,517	23,590	2,219	2,128
CO	3,295	2,929	3,774	3,426	2,332	2,306
CT	2,980	3,171	3,114	3,258	2,344	2,455
FL	9,946	10,191	10,641	10,860	2,218	2,182
GA	11,809	11,544	20,975	20,686	2,122	2,026
HI	552	586	580	615	2,103	1,902
IL	3,261	2,752	3,511	3,036	2,193	2,141
IN	21,963	22,517	22,639	23,269	2,288	2,162
IA	26,585	30,303	27,407	31,102	2,255	2,302
ME	4,226	3,879	4,333	3,948	2,400	2,503
MD	3,027	2,712	3,460	3,073	2,370	2,310
MI	5,901	5,847	6,178	6,114	2,171	2,273
MN	12,010	11,680	12,710	12,390	2,179	2,123
MS	1,780	1,821	6,605	6,710	1,998	1,997
MO	4,599	5,506	6,001	6,859	2,183	2,274
NE	11,726	11,674	11,876	11,774	2,097	2,191
NY	3,713	3,918	3,899	4,216	2,360	2,372
NC	3,584	3,506	11,456	11,275	1,912	1,951
OH	31,421	29,371	32,120	30,021	2,235	2,162
OK	1,962	1,950	4,006	4,045	1,947	1,953
OR	2,795	2,820	2,974	2,977	2,354	2,217
PA	21,278	22,571	22,739	24,085	2,238	2,296
SC	3,680	4,450	4,606	5,357	2,084	2,035
SD	1,882	1,992	2,142	2,192	2,241	2,281
TX	13,727	14,352	17,853	18,662	2,151	2,181
VA	1,641	1,354	3,718	3,367	1,937	1,841
WA	4,625	4,974	4,745	5,052	2,306	2,203
WI	3,749	3,925	4,391	4,534	2,368	2,360
30 Sts	249,958	253,560	308,962	312,260	2,177	2,162
Oth Sts ²	14,117	15,189	19,595	20,987	2,205	2,197
US	264,075	268,749	328,557	333,247	2,178	2,164

¹ Includes all layers and eggs produced in both table egg and hatching egg flocks regardless of size.

² Estimates for individual States are not available.

**Egg Production: By Type, State, and United States,
December 1999-00**

State	Total Production		Table Eggs ¹		Hatching Eggs ¹	
	1999	2000	1999	2000	1999	2000
	<i>Million Eggs</i>	<i>Million Eggs</i>	<i>Million Eggs</i>	<i>Million Eggs</i>	<i>Million Eggs</i>	<i>Million Eggs</i>
AL	207	197	79	62	128	135
AR	304	301	116	124	188	177
CA	561	521				
CO	88	78				
CT	75	79				
FL	244	240	233	228	11	12
GA	458	438	276	263	182	175
HI	12.1	11.7	12.1	11.7	0	0
IL	80	73	75	68	5	5
IN	531	517	519	503	12	14
IA	612	723				
ME	107	89				
MD	84	70	76	63	8	7
MI	140	142				
MN	282	269	273	259	9	10
MS	135	135	43	44	92	91
MO	138	148				
NE	259	254	259	254	0	0
NY	90	99				
NC	221	219	90	86	131	133
OH	718	644				
OK	77	76	45	44	32	32
OR	69	69	67	68	2	1
PA	516	557	498	539	18	18
SC	105	114	88	97	17	17
SD	47	53	47	53	0	0
TX	403	407				
VA	72	68	37	36	35	32
WA	109	112				
WI	105	108				
30 Sts	6,850	6,812	5,843	5,822	1,007	990
Oth Sts ²	430	467	355	378	74	89
US	7,279	7,279	6,198	6,200	1,081	1,079

¹ Data by type of flock not shown for some States to avoid disclosing individual operations.

² Estimates for individual States are not available.

**Egg Production: By Type, State, and United States,
January 2000-01**

State	Total Production		Table Eggs ¹		Hatching Eggs ¹	
	2000	2001	2000	2001	2000	2001
	<i>Million Eggs</i>	<i>Million Eggs</i>	<i>Million Eggs</i>	<i>Million Eggs</i>	<i>Million Eggs</i>	<i>Million Eggs</i>
AL	202	198	73	60	129	138
AR	303	306	117	121	186	185
CA	544	502				
CO	88	79				
CT	73	80				
FL	236	237	224	222	12	15
GA	445	419	265	245	180	174
HI	12.2	11.7	12.2	11.7	0	0
IL	77	65	73	60	4	5
IN	518	503	506	490	12	13
IA	618	716				
ME	104	99				
MD	82	71	74	65	8	6
MI	134	139				
MN	277	263	268	254	9	9
MS	132	134	42	43	90	91
MO	131	156				
NE	249	258	249	258	0	0
NY	92	100				
NC	219	220	88	84	131	136
OH	718	649				
OK	78	79	46	45	32	34
OR	70	66	68	65	2	1
PA	509	553	491	533	18	20
SC	96	109	80	92	16	17
SD	48	50	48	50	0	0
TX	384	407				
VA	72	62	36	29	36	33
WA	109	111				
WI	104	107				
30 Sts	6,725	6,750	5,723	5,737	1,002	1,013
Oth Sts ²	432	461	347	374	85	86
US	7,157	7,210	6,070	6,111	1,087	1,099

¹ Data by type of flock not shown for some States to avoid disclosing individual operations.

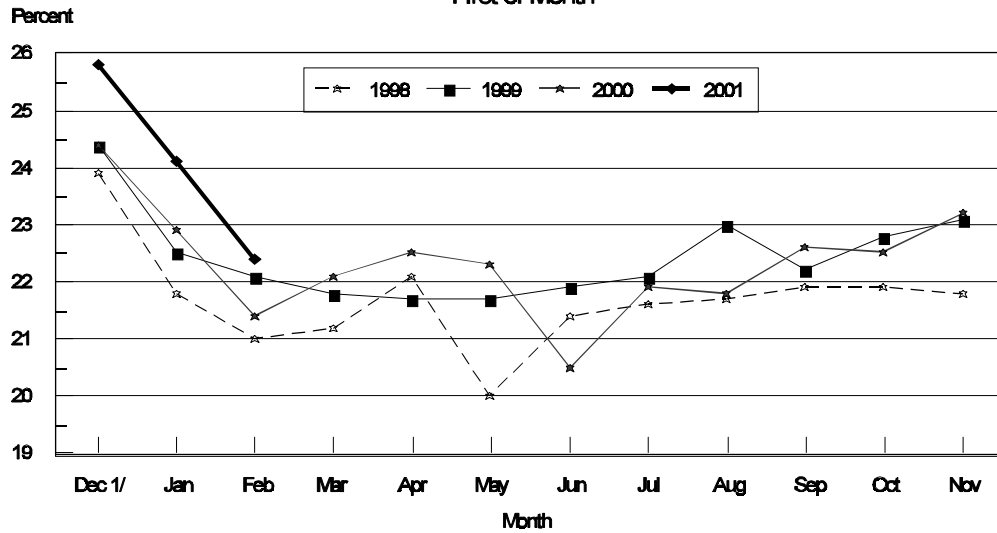
² Estimates for individual States are not available.

**Forced Molt: Percent of All Layers by Month,
United States, 2000-01 ¹**

Month	Percent Being Molted		Percent with Molt Completed	
	2000	2001	2000	2001
	<i>Percent</i>	<i>Percent</i>	<i>Percent</i>	<i>Percent</i>
Jan	2.9	3.4	22.9	24.1
Feb	5.0	5.2	21.4	22.4
Mar	3.7		22.1	
Apr	2.2		22.5	
May	4.0		22.3	
Jun	5.8		20.5	
Jul	4.8		21.9	
Aug	4.3		21.8	
Sep	4.6		22.6	
Oct	5.7		22.5	
Nov	4.0		23.2	
Dec	2.9		25.8	

¹ As of first of month.

**All Layers: United States
Percent Molt Completed, 1998 - 2001
First of Month**



1/ Previous year

**Forced Molt: Percent of All Layers by State
and United States, February 2000-01 ¹**

State	Percent Being Molted		Percent with Molt Completed	
	2000	2001	2000	2001
	<i>Percent</i>	<i>Percent</i>	<i>Percent</i>	<i>Percent</i>
AL	4.5	2.5	8.5	11.0
AR	3.0	4.0	8.5	10.5
CA	7.0	9.0	38.5	35.5
CO	1.5	2.5	23.5	26.0
CT	6.0	0.0	11.5	1.0
FL	8.0	5.5	38.0	32.0
GA	6.5	5.0	15.5	20.0
HI	5.5	3.0	45.0	48.0
IL	15.5	8.0	5.5	37.5
IN	4.0	5.0	29.0	28.0
IA	3.5	5.0	30.0	30.5
ME	0.0	0.0	0.0	0.0
MD	0.0	3.0	40.0	36.5
MI	6.0	3.0	22.5	26.0
MN	4.0	4.0	31.5	29.0
MS	4.0	4.0	14.5	12.0
MO	3.0	3.0	22.5	8.0
NE	9.0	5.5	25.0	27.0
NY	1.5	0.5	5.0	5.0
NC	3.0	1.0	8.5	10.0
OH	4.5	5.5	12.0	20.0
OK	1.0	2.0	9.5	6.5
OR	0.0	4.0	37.5	37.0
PA	5.5	7.5	20.0	17.5
SC	11.5	2.5	26.0	26.5
SD	4.0	3.5	28.0	31.0
TX	4.5	4.5	15.5	19.5
VA	8.5	3.0	8.5	11.5
WA	5.0	9.0	38.5	41.5
WI	4.0	10.0	24.0	29.0
30 Sts	4.9	4.9	21.4	22.5
Oth Sts ²	6.2	8.7	20.6	20.2
US	5.0	5.2	21.4	22.4

¹ As of first of month.

² Estimates for individual States are not available.

**Hatchery Production: Eggs in Incubators, Chicks Hatched,
and Placements by Type, United States, January-February 2000-01**

Item	2000	2001	2001 as % of 2000
	<i>1,000</i>	<i>1,000</i>	<i>Percent</i>
Egg-Type			
Eggs in Incubators on Feb 1	32,847	35,357	108
Chicks Hatched During Jan	34,125	37,976	111
Pullets Hatched During Jan for Intended Placements in Hatchery Supply Flocks	212	381	180
7-18 Month Earlier ¹	3,012	3,114	103
Broiler-Type			
Eggs in Incubators on Feb 1	620,179	612,779	99
Chicks Hatched During Jan	749,375	733,889	98
Pullets Hatched During Jan for Intended Placements in Hatchery Supply Flocks	6,861	6,685	97
7-15 Months Earlier ²	64,139	63,298	99

¹ 2001 includes pullet chicks hatched Jul 1999 through Jun 2000.

² 2001 includes pullet chicks hatched Oct 1999 through Jun 2000.

**Egg-Type Eggs in Incubators: By Region and United States,
February 1, 2000-01**

Geographic Division	2000	2001	2001 as % of 2000
	<i>1,000</i>	<i>1,000</i>	<i>Percent</i>
North Atlantic	5,724	5,611	98
E North Central	8,427	8,277	98
W North Central	6,516	7,338	113
South Atlantic	4,122	4,536	110
South Central	3,146	5,300	168
West	4,912	4,295	87
US	32,847	35,357	108

Regional Listing:

North Atlantic = CT, ME, MA, NH, NJ, NY, PA, RI, VT.

E North Central = IL, IN, MI, OH, WI.

W North Central = IA, KS, MN, MO, NE, ND, SD.

South Atlantic = DE, FL, GA, MD, NC, SC, VA, WV.

South Central = AL, AR, KY, LA, MS, OK, TN, TX.

West = AK, AZ, CA, CO, HI, ID, MT, NM, NV, OR, UT, WA, WY.

**Egg-Type Chicks Hatched: By State and United States,
January 2000-01**

State	January			Jan-Jan		
	2000	2001	2001 as % of 2000	2000	2001	2001 as % of 2000
	<i>1,000</i>	<i>1,000</i>	<i>Percent</i>	<i>1,000</i>	<i>1,000</i>	<i>Percent</i>
AR	496	764	154	496	764	154
FL	1,074	800	74	1,074	800	74
GA	2,164	2,182	101	2,164	2,182	101
IN	7,040	7,578	108	7,040	7,578	108
IA	4,468	5,912	132	4,468	5,912	132
KS	244	351	144	244	351	144
MN	1,769	1,506	85	1,769	1,506	85
MO	310	310	100	310	310	100
PA	4,943	5,613	114	4,943	5,613	114
Oth Sts ¹	11,617	12,960	112	11,617	12,960	112
US	34,125	37,976	111	34,125	37,976	111

¹ Not published separately to avoid disclosing data for individual operations.

Egg-Type Chicks Hatched: By Month, United States, 1999-01

Month	By Months				Cumulative			
	1999	2000	2001	2001 as % of 2000	1999	2000	2001	2001 as % of 2000
	<i>1,000</i>	<i>1,000</i>	<i>1,000</i>	<i>Percent</i>	<i>1,000</i>	<i>1,000</i>	<i>1,000</i>	<i>Percent</i>
Jan	35,242	34,125	37,976	111	35,242	34,125	37,976	111
Feb	36,367	35,491			71,609	69,616		
Mar	41,172	39,560			112,781	109,176		
Apr	41,950	36,621			154,731	145,797		
May	40,726	40,879			195,457	186,676		
Jun	41,474	36,575			236,931	223,251		
Jul	34,275	33,091			271,206	256,342		
Aug	35,454	34,317			306,660	290,659		
Sep	39,287	36,290			345,947	326,949		
Oct	39,044	35,231			384,991	362,180		
Nov	32,892	32,646			417,883	394,826		
Dec	33,045	35,008			450,928	429,834		

**Intended Placements: Egg-Type Pullet Chicks for Hatchery Supply
Flocks by Month and Total, United States, 1999-01 ¹**

Month	Pullet Chicks Hatched			2001 as % of 2000	Cumulative Potential Placements Relative to Current Supply Flocks 7-18 Months Earlier ²		
	1999	2000	2001		1999	2000	2001
	<i>1,000</i>	<i>1,000</i>	<i>1,000</i>	<i>Percent</i>	<i>1,000</i>	<i>1,000</i>	<i>1,000</i>
Jan	166	212	381	180	3,029	3,012	3,114
Feb	267	251			3,120	2,945	3,235
Mar	257	286			3,020	3,078	3,192
Apr	287	309			2,942	2,981	3,242
May	283	343			3,044	2,900	3,248
Jun	187	223			3,132	2,945	3,393
Jul	231	352			3,108	2,937	3,542
Aug	318	275			3,085	2,983	3,711
Sep	227	277			3,102	2,967	
Oct	277	283			3,134	2,996	
Nov	262	407			3,088	3,018	
Dec	175	324			3,179	3,078	
Total	2,937	3,542					

¹ Reported by leading breeders. Coverage may not be 100 percent. Includes expected pullet chicks from eggs sold during the preceding month at the rate of 125 pullet chicks per 30 dozen case of eggs.

² For January 2001, includes breeder pullet chicks hatched Jul 1999 through Jun 2000. The 7-18 months represent the first laying cycle. Molting and additional laying cycles will increase the cumulative potential placements.

**Broiler-Type Eggs in Incubators: By Region
and United States, February 1, 2000-01**

Geographic Division	2000	2001	2001 as % of 2000
	<i>1,000</i>	<i>1,000</i>	<i>Percent</i>
North Atlantic	12,098	11,531	95
E North Central	8,072	7,372	91
W North Central	20,681	20,405	99
South Atlantic	231,526	229,222	99
South Central	323,788	319,456	99
West	24,014	24,793	103
US	620,179	612,779	99

**Broiler-Type Chicks Hatched: By State
and United States, January 2000-01**

State	January			Jan-Jan		
	2000	2001	2001 as % of 2000	2000	2001	2001 as % of 2000
	<i>1,000</i>	<i>1,000</i>	<i>Percent</i>	<i>1,000</i>	<i>1,000</i>	<i>Percent</i>
AL	102,750	101,763	99	102,750	101,763	99
AR	111,504	103,479	93	111,504	103,479	93
DE	15,401	14,579	95	15,401	14,579	95
FL	9,531	8,909	93	9,531	8,909	93
GA	112,789	110,320	98	112,789	110,320	98
MD	31,076	29,250	94	31,076	29,250	94
MS	65,079	66,276	102	65,079	66,276	102
NC	63,570	65,203	103	63,570	65,203	103
PA	13,307	12,585	95	13,307	12,585	95
SC	17,266	16,942	98	17,266	16,942	98
TX	51,454	53,193	103	51,454	53,193	103
VA	23,637	23,557	100	23,637	23,557	100
CA TN & WV	39,893	39,907	100	39,893	39,907	100
15 Sts ¹	657,257	645,963	98	657,257	645,963	98
Oth Sts ²	92,118	87,926	95	92,118	87,926	95
US	749,375	733,889	98	749,375	733,889	98

¹ States in the weekly hatchery production estimating program.

² Not published separately to avoid disclosing data for individual operations.

Broiler Chicks Hatched: By Month, United States, 1999-01

Month	By Months				Cumulative			
	1999	2000	2001	2001 as % of 2000	1999	2000	2001	2001 as % of 2000
	<i>1,000</i>	<i>1,000</i>	<i>1,000</i>	<i>Percent</i>	<i>1,000</i>	<i>1,000</i>	<i>1,000</i>	<i>Percent</i>
Jan	735,768	749,375	733,889	98	735,768	749,375	733,889	98
Feb	662,604	700,967			1,398,372	1,450,342		
Mar	755,804	756,351			2,154,176	2,206,693		
Apr	734,734	743,516			2,888,910	2,950,209		
May	766,422	775,181			3,655,332	3,725,390		
Jun	744,372	748,008			4,399,704	4,473,398		
Jul	751,627	739,892			5,151,331	5,213,290		
Aug	741,716	739,931			5,893,047	5,953,221		
Sep	700,016	704,901			6,593,063	6,658,122		
Oct	697,434	711,012			7,290,497	7,369,134		
Nov	676,769	674,222			7,967,266	8,043,356		
Dec	748,438	738,796			8,715,704	8,782,152		

**Intended Placements: Broiler-Type Pullet Chicks for Hatchery
Supply Flocks by Month and Total, 1999-01 ¹**

Month	Pullet Chicks Hatched			2001 as % of 2000	Cumulative Potential Placements Relative to Current Supply Flocks 7-15 Months Earlier ²		
	1999	2000	2001		1999	2000	2001
	<i>1,000</i>	<i>1,000</i>	<i>1,000</i>	<i>Percent</i>	<i>1,000</i>	<i>1,000</i>	<i>1,000</i>
US Place- ments							
Jan	7,059	6,861	6,685	97	59,403	64,139	63,298
Feb	6,882	7,001			59,937	64,344	62,487
Mar	7,284	7,310			60,699	64,697	62,791
Apr	7,038	6,764			61,775	64,663	62,267
May	7,736	7,435			61,893	64,725	62,100
Jun	7,041	6,829			62,877	64,827	62,204
Jul	7,088	6,310			63,005	64,536	61,323
Aug	7,665	7,288			63,377	64,359	61,244
Sep	6,870	6,469			63,197	63,624	
Oct	7,121	6,694			63,549	63,893	
Nov	6,984	7,105			63,799	63,569	
Dec	6,993	6,429			64,426	63,339	
Annual Total	85,761	82,495					
Total Place- ments ³							
Jan	8,679	8,069	7,615	94			
Feb	8,473	8,302					
Mar	8,863	8,798					
Apr	8,572	8,522					
May	9,463	8,917					
Jun	8,333	8,201					
Jul	8,342	7,621					
Aug	8,983	8,657					
Sep	8,044	8,042					
Oct	8,223	8,260					
Nov	8,220	8,702					
Dec	8,299	7,614					
Annual Total	102,494	99,705					

¹ Reported by leading breeders. Coverage may not be 100 percent. Includes expected pullet chicks from eggs sold during the preceding month at the rate of 125 pullet chicks per 30 dozen case of eggs.

² For Jan 2001, includes breeder pullet chicks hatched Oct 1999 through Jun 2000.

³ U.S. production of intended placements worldwide.

Procedures and Reliability

Data Sources: Primary data for the "**Chickens and Eggs**" report are from weekly and/or monthly questionnaires sent to producers. An attempt is made to collect information for layer and egg estimates from each known contractor and independent producer who has over 30,000 table egg layers. Coverage for operations with less than 30,000 table egg layers are estimated each month based on data reported in December. Approximately 900 contractors, independent egg producers, and started pullet operations are contacted each month. All known hatcheries, approximately 330, are contacted for information on a weekly and/or monthly basis.

Revisions: The previous month's estimates are subject to revision if late reports or corrected data indicates a different level. Additionally, revisions needed after the monthly report will be made at the end of the marketing year and published in the annual summaries of "**Chickens and Eggs Summary**" and "**Hatchery Production**".

Procedures and Reliability: Operations are mailed a questionnaire and given adequate time to respond by mail. Those that do not respond are phoned. Great care is exercised to ensure that all operations are accounted for during each survey period. However, there are usually missing reports that must be accounted for in the estimates.

Sound statistical methodology is employed to derive estimates from the reported data. All data are checked for unusual values. All operations' data are compared to their own past operating profiles and also to trends from other operations. Data for missing operations are estimated based on similar operations or historical data. Survey data are subject to non-sampling errors such as omissions and mistakes in reporting and in processing. While these errors cannot be measured directly, they are minimized by reviewing all data for consistency and reasonableness.

Egg-type chicks hatched are comprised of all chicks of egg-type domesticated breeds including males and chicks destined for hatchery supply flocks and research purposes. The relationship of chicks hatched to chicken inventory and poultry marketings is carefully monitored. The disposition of egg-type chicks hatched prior to placement into the laying flock can vary significantly, which can make comparisons to changes in layer inventory inconsistent over time.

Intended placement data reported by leading breeders include pullet chicks expected from eggs sold the preceding month. The breeders in this report account for a large percentage of replacement pullets for hatchery supply flocks. Production of replacement pullets by these breeders indicates the number of pullets available to hatchery egg supply flocks several months before the pullets will actually move into the flocks. Beginning with the January 1996 publication the broiler-type cumulative potential placements went from 7-14 months earlier to 7-15 months earlier. The egg-type cumulative potential placements of 7-18 months represent the first laying cycle. Molting and additional laying cycles will increase the cumulative potential placements of egg-type hatching flocks.

The next "Chickens and Eggs" report will be released at 3 p.m. ET on March 23, 2001.

The United States Department of Agriculture (USDA) prohibits discrimination in all its programs on the basis of race, color, national origin, gender, religion, age, disability, political beliefs, sexual orientation, and marital or family status. (Not all prohibited bases apply to all programs.) Persons with disabilities who require alternative means for communication of program information (braille, large print, audiotape, etc.) should contact the USDA's TARGET Center at 202-720-2600 (voice and TDD).

To file a complaint of discrimination, write USDA, Director, Office of Civil Rights, Room 326-W, Whitten Building, 14th and Independence Avenue, SW, Washington, D.C., 20250-9410, or call 202-720-5964 (voice or TDD). USDA is an equal opportunity provider and employer.

ACCESS TO REPORTS!!

For your convenience, there are several ways to obtain NASS reports, data products, and services:

INTERNET ACCESS

All NASS reports are available free of charge on the worldwide Internet. For access, connect to the Internet and go to the NASS Home Page at: <http://www.usda.gov/nass/>. Select "Today's Reports" or Publications and then Reports by Calendar or Publications and then Search, by Title or Subject.

E-MAIL SUBSCRIPTION

There are two options for subscribing via e-mail. All NASS reports are available by subscription free of charge direct to your e-mail address. 1) Starting with the NASS Home Page at <http://www.usda.gov/nass/>, click on **Publications**, then click on the **Subscribe by E-mail** button which takes you to the page describing e-mail delivery of reports. Finally, click on **Go to the Subscription Page** and follow the instructions. 2) If you do NOT have Internet access, send an e-mail message to: usda-reports@usda.mannlib.cornell.edu. In the body of the message type the word: **list**.

AUTOFAX ACCESS

NASSFax service is available for some reports from your fax machine. Please call 202-720-2000, using the handset attached to your fax. Respond to the voice prompts. Document 0411 is a list of available reports.

PRINTED REPORTS OR DATA PRODUCTS

CALL OUR TOLL-FREE ORDER DESK: 800-999-6779 (U.S. and Canada)
Other areas, please call 703-834-0125 FAX: 703-834-0110
(Visa, MasterCard, check, or money order acceptable for payment.)

ASSISTANCE

For **assistance** with general agricultural statistics or further information about NASS or its products or services, contact the **Agricultural Statistics Hotline** at **800-727-9540**, 7:30 a.m. to 4:00 p.m. ET, or e-mail: nass@nass.usda.gov.