

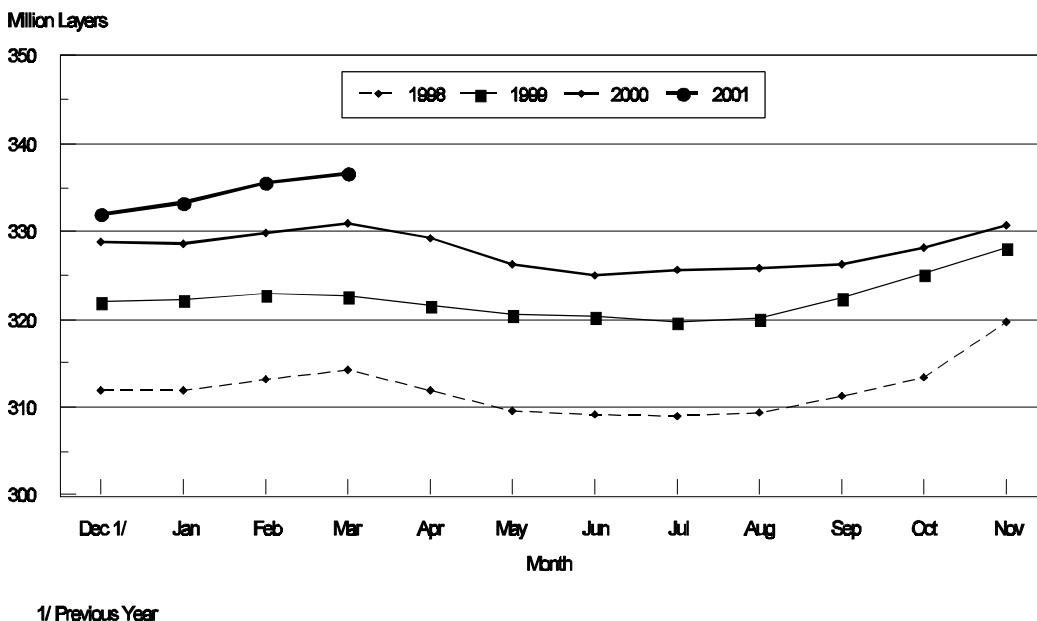
Released April 23, 2001, by the National Agricultural Statistics Service (NASS), Agricultural Statistics Board, U.S. Department of Agriculture. For information on "Chickens and Eggs" call Tom Kruchten at (202) 690-4870. For information on Hatch call Jody Roberts at (202) 690-8632, office hours 7:30 a.m. to 4:00 p.m. ET.

March Egg Production Up 1 Percent

U.S. egg production totaled 7.33 billion during March 2001, up 1 percent from last year. Production included 6.22 billion table eggs and 1.11 billion hatching eggs, of which 1.05 billion were broiler-type and 67.0 million were egg-type. The total number of layers during March 2001 averaged 337 million, up 2 percent from the total average number of layers during March 2000. March egg production per 100 layers was 2,178 eggs, down slightly from 2,186 eggs in March 2000.

March 2001 contained 22 weekdays and five Saturdays, compared to 23 weekdays and 4 Saturdays in March 2000.

Average Number of All Layers United States, 1998 - 2001



All layers in the U.S. on April 1, 2001, totaled 337 million, up 2 percent from a year ago. The 337 million layers consisted of 278 million layers producing table or commercial type eggs, 56.4 million layers producing broiler-type hatching eggs, and 2.80 million layers producing egg-type hatching eggs. Rate of lay per day on April 1, 2001, averaged 70.9 eggs per 100 layers, down slightly from the 71.2 eggs a year ago.

Laying flocks in the 30 major egg producing States produced 6.87 billion eggs during March 2001, up 1 percent from March 2000. The average number of layers during March, at 315 million, was up 2 percent from a year earlier.

Individual State estimates are available for the 30 major egg producing States. These States are listed on page 8 of this release and account for approximately 94 percent of the total U.S. egg production. Production for the other States are grouped into an "Other States" category and combined with the 30 States published individually to obtain a U.S. estimate. Individual State estimates' for "Other States" are available annually in the "**Chickens and Eggs Summary**" report.

Egg-Type Chicks Hatched Up 3 Percent

Egg-type chicks **hatched** during March totaled 40 million, up 3 percent from March 2000. **Eggs in incubators** totaled 36.0 million on April 1, 2001, up 9 percent from a year ago.

Domestic placements of **egg-type pullet chicks for future hatchery supply flocks** by leading breeders totaled 372,000 during March 2001, up 30 percent from March 2000.

Broiler Hatch Up 1 Percent

The March 2001 **hatch** of broiler-type chicks, at 763 million, was up 1 percent from March of the previous year. There were 627 million **eggs in incubators** on April 1, 2001, down 1 percent from a year earlier.

Leading breeders placed 6.75 million **broiler-type pullet chicks for future domestic hatchery supply flocks** during March 2001, down 8 percent from March 2000.

**All Layers: Average Number on Hand During the Month,
United States, 1998-01**

Month	1998	1999	2000	2001
	<i>1,000 Layers</i>	<i>1,000 Layers</i>	<i>1,000 Layers</i>	<i>1,000 Layers</i>
Dec ¹	311,898	321,972	328,828	331,962
Jan	311,906	322,356	328,557	333,283
Feb	313,285	322,827	329,843	335,533
Mar	314,141	322,782	330,862	336,638
Apr	311,957	321,539	329,223	
May	309,655	320,510	326,326	
Jun	309,206	320,441	324,957	
Jul	308,967	319,819	325,563	
Aug	309,291	320,188	325,753	
Sep	311,358	322,409	326,237	
Oct	315,222	325,287	328,178	
Nov	319,625	328,268	330,678	

¹ December preceding year.

**Eggs: Production During the Month by Type,
United States, 2000-01**

Month	Total Eggs		Table Eggs		Hatching Eggs	
	2000	2001	2000	2001	2000	2001
	<i>Million Eggs</i>	<i>Million Eggs</i>	<i>Million Eggs</i>	<i>Million Eggs</i>	<i>Million Eggs</i>	<i>Million Eggs</i>
Dec ¹	7,279	7,279	6,198	6,200	1,081	1,079
Jan	7,157	7,217	6,070	6,119	1,087	1,098
Feb	6,648	6,519	5,625	5,512	1,023	1,007
Mar	7,234	7,331	6,110	6,219	1,124	1,112
Apr	7,013		5,911		1,102	
May	7,104		5,970		1,134	
Jun	6,801		5,722		1,079	
Jul	7,061		5,952		1,109	
Aug	7,104		6,015		1,089	
Sep	6,854		5,820		1,034	
Oct	7,130		6,063		1,067	
Nov	7,027		5,989		1,038	
During Year	84,412	28,346	71,445	24,050	12,967	4,296

¹ December preceding year.

**Layers and Eggs: Layers on Hand and Eggs Produced by Type,
and Forced Molt, United States, February-March 2000-01**

Item	Unit	2000	2001	2001 as % of 2000
Layers During Feb	1,000			
All Layers		329,843	335,533	102
Table Egg Type		270,761	276,303	102
Hatching Egg Type		59,082	59,230	100
Broiler-Type Hatching		56,376	56,432	100
Egg-Type Hatching		2,706	2,798	103
Eggs per 100 Layers During Feb	Number			
All Layers		2,016	1,943	96
Table Egg Type		2,077	1,995	96
Hatching Egg Type		1,731	1,700	98
Broiler-Type Hatching		1,708	1,678	98
Egg-Type Hatching		2,217	2,144	97
Eggs Produced During Feb	Million			
All Layers		6,648	6,519	98
Table Egg Type		5,625	5,512	98
Hatching Egg Type		1,023	1,007	98
Broiler-Type Hatching		963	947	98
Egg-Type Hatching		60	60	100
Layers on Mar 1	1,000			
All Layers		330,876	336,056	102
Table Egg Type		271,426	276,474	102
Hatching Egg Type		59,450	59,582	100
Broiler-Type Hatching		56,742	56,803	100
Egg-Type Hatching		2,708	2,779	103
Eggs per 100 Layers on Mar 1	Number			
All Layers		69.8	69.5	100
Table Egg Type		71.9	71.4	99
Hatching Egg Type		60.1	60.3	100
Broiler-Type Hatching		59.2	59.5	101
Egg-Type Hatching		77.9	76.6	98
Forced Molt Layers on Mar 1	Percent			
Percent Being Molted		3.7	4.2	114
Percent with Molt Completed		22.1	23.1	105
Layers Sold for Slaughter During Feb	1,000	16,489	15,716	95
Layers Rendered, Died, Destroyed, Composted or Disappeared For Any Reason During Feb	1,000	1,703	4,082	240
Pullets Less Than 20 Weeks of Age, Mar 1	1,000	93,812	96,312	103
Pullets Added During Feb ¹	1,000	21,246	22,207	105

¹ Pullet chicks one day old added to pullet flocks.

**Layers and Eggs: Layers on Hand and Eggs Produced by Type,
and Forced Molt, United States, March-April 2000-01**

Item	Unit	2000 ¹	2001	2001 as % of 2000
Layers During Mar	1,000			
All Layers		330,862	336,638	102
Table Egg Type		271,046	277,251	102
Hatching Egg Type		59,816	59,387	99
Broiler-Type Hatching		57,047	56,597	99
Egg-Type Hatching		2,769	2,790	101
Eggs per 100 Layers During Mar	Number			
All Layers		2,186	2,178	100
Table Egg Type		2,254	2,243	100
Hatching Egg Type		1,879	1,872	100
Broiler-Type Hatching		1,853	1,846	100
Egg-Type Hatching		2,420	2,401	99
Eggs Produced During Mar	Million			
All Layers		7,234	7,331	101
Table Egg Type		6,110	6,219	102
Hatching Egg Type		1,124	1,112	99
Broiler-Type Hatching		1,057	1,045	99
Egg-Type Hatching		67	67	100
Layers on Apr 1	1,000			
All Layers		330,807	337,183	102
Table Egg Type		270,646	278,009	103
Hatching Egg Type		60,161	59,174	98
Broiler-Type Hatching		57,341	56,379	98
Egg-Type Hatching		2,820	2,795	99
Eggs per 100 Layers on Apr 1	Number			
All Layers		71.2	70.9	100
Table Egg Type		73.5	73.2	100
Hatching Egg Type		60.7	60.3	99
Broiler-Type Hatching		59.8	59.5	99
Egg-Type Hatching		78.3	76.5	98
Forced Molt Layers, Apr 1	Percent			
Percent Being Molted		2.2	2.0	91
Percent with Molt Completed		22.5	23.1	103
Layers Sold for Slaughter During Mar	1,000	17,842	15,863	89
Layers Rendered, Died, Destroyed, Composted or Disappeared For Any Reason During Mar	1,000	3,820	3,844	101
Pullets Less Than 20 Weeks of Age, Apr 1	1,000	95,737	96,321	101
Pullets Added During Mar ²	1,000	24,920	27,050	109

¹ Revised.

² Pullet chicks one day old added to pullet flocks.

**Layers and Eggs: Layers on Hand and Eggs Produced by Type, and Forced
Molt, 30 Selected States, February-March, 2000-01 ¹**

Item	Unit	2000	2001	2001 as % of 2000
Layers During Feb	1,000			
All Layers		309,951	314,459	101
Table Egg Type		255,485	259,944	102
Hatching Egg Type		54,466	54,515	100
Broiler-Type Hatching		51,854	51,810	100
Egg-Type Hatching		2,612	2,705	104
Eggs per 100 Layers During Feb	Number			
All Layers		2,013	1,943	97
Table Egg Type		2,074	1,994	96
Hatching Egg Type		1,726	1,699	98
Broiler-Type Hatching		1,701	1,675	98
Egg-Type Hatching		2,221	2,144	97
Eggs Produced During Feb	Million			
All Layers		6,238	6,110	98
Table Egg Type		5,298	5,184	98
Hatching Egg Type		940	926	99
Broiler-Type Hatching		882	868	98
Egg-Type Hatching		58	58	100
Layers on Mar 1	1,000			
All Layers		310,706	315,007	101
Table Egg Type		256,012	260,126	102
Hatching Egg Type		54,694	54,881	100
Broiler-Type Hatching		52,077	52,206	100
Egg-Type Hatching		2,617	2,675	102
Eggs per 100 Layers on Mar 1	Number			
All Layers		69.7	69.5	100
Table Egg Type		71.8	71.5	100
Hatching Egg Type		59.9	60.2	101
Broiler-Type Hatching		59.0	59.3	101
Egg-Type Hatching		77.8	76.8	99
Forced Molt Layers on Mar 1	Percent			
Percent Being Molted		3.6	4.1	114
Percent with Molt Completed		22.4	23.0	103
Layers Sold for Slaughter During Feb	1,000	15,640	14,421	92
Layers Rendered, Died, Destroyed, Composted or Disappeared For Any Reason During Feb	1,000	1,695	3,896	230
Pullets Less Than 20 Weeks of Age, Mar 1	1,000	88,258	90,366	102
Pullets Added During Feb ²	1,000	20,041	21,275	106

¹ The 30 States are listed in the table on page 8.

² Pullet chicks one day old added to pullet flocks.

Layers and Eggs: Layers on Hand and Eggs Produced by Type, and Forced Molt, 30 Selected States, March-April, 2000-01 ¹

Item	Unit	2000 ²	2001	2001 as % of 2000
Layers During Mar	1,000			
All Layers		310,553	315,485	102
Table Egg Type		255,527	260,823	102
Hatching Egg Type		55,026	54,662	99
Broiler-Type Hatching		52,373	51,977	99
Egg-Type Hatching		2,653	2,685	101
Eggs per 100 Layers During Mar	1,000			
All Layers		2,186	2,178	100
Table Egg Type		2,253	2,243	100
Hatching Egg Type		1,872	1,870	100
Broiler-Type Hatching		1,844	1,843	100
Egg-Type Hatching		2,412	2,384	99
Eggs Produced During Mar	Million			
All Layers		6,788	6,872	101
Table Egg Type		5,758	5,850	102
Hatching Egg Type		1,030	1,022	99
Broiler-Type Hatching		966	958	99
Egg-Type Hatching		64	64	100
Layers on Apr 1	1,000			
All Layers		310,369	315,932	102
Table Egg Type		255,028	261,506	103
Hatching Egg Type		55,341	54,426	98
Broiler-Type Hatching		52,660	51,736	98
Egg-Type Hatching		2,681	2,690	100
Eggs per 100 Layers on Apr 1	Number			
All Layers		71.2	70.9	100
Table Egg Type		73.5	73.1	99
Hatching Egg Type		60.5	60.1	99
Broiler-Type Hatching		59.5	59.2	99
Egg-Type Hatching		78.4	76.1	97
Forced Molt Layers, Apr 1	Percent			
Percent Being Molted		2.1	1.9	90
Percent with Molt Completed		22.7	23.1	102
Layers Sold for Slaughter During Mar	1,000	17,100	15,062	88
Layers Rendered, Died, Destroyed, Composted or Disappeared For Any Reason During Mar	1,000	3,601	3,672	102
Pullets Less Than 20 Weeks of Age, Apr 1	1,000	90,237	90,483	100
Pullets Added During Mar ³	1,000	24,027	25,889	108

¹ The 30 States are listed in the table on page 8.

² Revised.

³ Pullet chicks one day old added to pullet flocks.

**Layers and Eggs: Layers on Hand and Eggs Produced by State
and United States, During February 2000-01**

State	Table Egg Layers in Flocks 30,000 and Above		All Layers ¹		Eggs per 100 for All Layers ¹	
	2000	2001	2000	2001	2000	2001
	<i>1,000</i>	<i>1,000</i>	<i>1,000</i>	<i>1,000</i>	<i>Number</i>	<i>Number</i>
AL	3,313	2,798	10,580	10,237	1,786	1,758
AR	5,008	5,341	15,483	15,578	1,847	1,785
CA	23,644	23,085	24,343	23,679	2,054	1,892
CO	3,344	3,347	3,822	3,811	2,119	2,020
CT	3,009	3,197	3,143	3,284	2,164	2,192
FL	9,878	10,166	10,560	10,896	2,008	1,955
GA	11,963	11,440	21,139	20,749	1,954	1,827
HI	567	580	596	609	1,946	1,691
IL	3,348	2,685	3,607	2,946	2,079	2,003
IN	22,063	22,355	22,755	23,082	2,114	1,958
IA	26,678	30,533	27,485	31,302	2,132	2,022
ME	4,128	3,997	4,236	4,058	2,219	2,011
MD	3,012	2,686	3,415	3,021	2,138	2,052
MI	5,992	6,043	6,271	6,315	2,011	2,013
MN	12,000	11,615	12,713	12,338	2,084	1,978
MS	1,796	1,853	6,725	6,779	1,859	1,770
MO	4,721	5,675	6,123	7,046	2,090	2,001
NE	11,698	11,600	11,848	11,700	1,916	1,974
NY	3,690	3,898	3,874	4,205	2,220	2,140
NC	3,593	3,552	11,487	11,271	1,785	1,739
OH	31,483	29,649	32,158	30,304	2,009	1,970
OK	1,964	1,967	4,079	4,159	1,814	1,827
OR	2,856	2,725	3,035	2,893	2,208	2,143
PA	21,780	22,984	23,250	24,496	2,103	2,111
SC	3,693	4,512	4,624	5,522	1,925	1,847
SD	1,900	1,988	2,160	2,188	2,037	2,057
TX	13,609	14,512	17,756	18,851	1,949	1,931
VA	1,541	1,412	3,598	3,533	1,779	1,613
WA	4,612	4,916	4,732	4,996	2,206	2,006
WI	3,717	3,996	4,354	4,611	2,205	2,082
30 Sts	250,600	255,107	309,951	314,459	2,013	1,943
Oth Sts ²	14,245	15,166	19,892	21,074	2,061	1,946
US	264,845	270,273	329,843	335,533	2,016	1,943

¹ Includes all layers and eggs produced in both table egg and hatching egg flocks regardless of size.

² Estimates for individual States are not available.

**Layers and Eggs: Layers on Hand and Eggs Produced by State
and United States, During March 2000-01**

State	Table Egg Layers in Flocks 30,000 and Above		All Layers ¹		Eggs per 100 for All Layers ¹	
	2000	2001	2000	2001	2000	2001
	<i>1,000</i>	<i>1,000</i>	<i>1,000</i>	<i>1,000</i>	<i>Number</i>	<i>Number</i>
AL	3,230	2,887	10,636	10,364	1,937	1,949
AR	4,957	5,018	15,684	15,163	1,957	1,985
CA	23,645	22,746	24,243	23,301	2,252	2,159
CO	3,425	3,331	3,936	3,802	2,236	2,209
CT	2,975	3,111	3,109	3,198	2,316	2,439
FL	9,940	10,199	10,620	10,934	2,241	2,149
GA	12,070	11,908	21,370	21,385	2,143	2,104
HI	586	584	615	613	2,081	1,876
IL	3,356	2,898	3,622	3,154	2,347	2,315
IN	22,213	22,286	22,901	22,999	2,279	2,252
IA	26,822	31,215	27,631	31,962	2,276	2,231
ME	4,127	3,880	4,238	3,941	2,383	2,124
MD	3,027	2,835	3,416	3,164	2,225	2,276
MI	6,201	6,428	6,484	6,700	2,209	2,227
MN	11,935	11,493	12,663	12,221	2,218	2,160
MS	1,839	1,862	6,859	6,787	2,027	1,974
MO	4,829	5,429	6,210	6,760	2,238	2,204
NE	11,638	11,548	11,788	11,648	2,146	2,198
NY	3,799	3,823	4,001	4,149	2,374	2,362
NC	3,402	3,454	11,302	11,163	1,902	1,917
OH	30,840	29,610	31,503	30,251	2,162	2,245
OK	1,959	1,919	4,097	4,145	1,977	2,027
OR	2,868	2,813	3,047	2,987	2,265	2,377
PA	22,046	23,114	23,530	24,623	2,303	2,376
SC	3,938	4,422	4,879	5,442	2,050	2,113
SD	1,926	2,068	2,186	2,268	2,150	2,160
TX	13,158	14,525	17,278	18,969	2,153	2,156
VA	1,432	1,562	3,476	3,658	2,043	1,832
WA	4,664	4,975	4,784	5,054	2,349	2,339
WI	3,795	4,058	4,445	4,680	2,385	2,265
30 Sts	250,642	256,001	310,553	315,485	2,186	2,178
Oth Sts ²	14,487	15,235	20,309	21,153	2,196	2,175
US	265,129	271,236	330,862	336,638	2,186	2,178

¹ Includes all layers and eggs produced in both table egg and hatching egg flocks regardless of size.

² Estimates for individual States are not available.

**Egg Production: By Type, State, and United States,
February 2000-01**

State	Total Production		Table Eggs ¹		Hatching Eggs ¹	
	2000	2001	2000	2001	2000	2001
	<i>Million Eggs</i>	<i>Million Eggs</i>	<i>Million Eggs</i>	<i>Million Eggs</i>	<i>Million Eggs</i>	<i>Million Eggs</i>
AL	189	180	66	54	123	126
AR	286	278	109	106	177	172
CA	500	448				
CO	81	77				
CT	68	72				
FL	212	213	200	200	12	13
GA	399	379	237	220	162	159
HI	11.6	10.3	11.6	10.3	0	0
IL	75	59	71	55	4	4
IN	481	452	469	440	12	12
IA	586	633				
ME	94	82				
MD	73	62	67	57	6	5
MI	126	127				
MN	265	244	256	235	9	9
MS	125	120	39	39	86	81
MO	128	141				
NE	227	231	227	231	0	0
NY	86	90				
NC	205	196	82	75	123	121
OH	646	597				
OK	74	76	43	42	31	34
OR	67	62	65	61	2	1
PA	489	517	472	499	17	18
SC	89	102	73	85	16	17
SD	44	45	44	45	0	0
TX	346	364				
VA	64	57	31	25	33	32
WA	104	100				
WI	96	96				
30 Sts	6,238	6,110	5,298	5,184	940	926
Oth Sts ²	410	410	327	328	83	81
US	6,648	6,519	5,625	5,512	1,023	1,007

¹ Data by type of flock not shown for some States to avoid disclosing individual operations.

² Estimates for individual States are not available.

**Egg Production: By Type, State, and United States,
March 2000-01**

State	Total Production		Table Eggs ¹		Hatching Eggs ¹	
	2000	2001	2000	2001	2000	2001
	<i>Million Eggs</i>	<i>Million Eggs</i>	<i>Million Eggs</i>	<i>Million Eggs</i>	<i>Million Eggs</i>	<i>Million Eggs</i>
AL	206	202	71	64	135	138
AR	307	301	111	113	196	188
CA	546	503				
CO	88	84				
CT	72	78				
FL	238	235	226	222	12	13
GA	458	450	276	269	182	181
HI	12.8	11.5	12.8	11.5	0	0
IL	85	73	81	69	4	4
IN	522	518	508	505	14	13
IA	629	713				
ME	101	84				
MD	76	72	70	67	6	5
MI	143	149				
MN	281	264	271	255	10	9
MS	139	134	45	44	94	90
MO	139	149				
NE	253	256	253	256	0	0
NY	95	98				
NC	215	214	83	81	132	133
OH	681	679				
OK	81	84	46	47	35	37
OR	69	71	67	69	2	2
PA	542	585	524	565	18	20
SC	100	115	83	95	17	20
SD	47	49	47	49	0	0
TX	372	409				
VA	71	67	34	30	37	37
WA	112	118				
WI	106	106				
30 Sts	6,788	6,872	5,758	5,850	1,030	1,022
Oth Sts ²	446	460	352	369	94	90
US	7,234	7,331	6,110	6,219	1,124	1,112

¹ Data by type of flock not shown for some States to avoid disclosing individual operations.

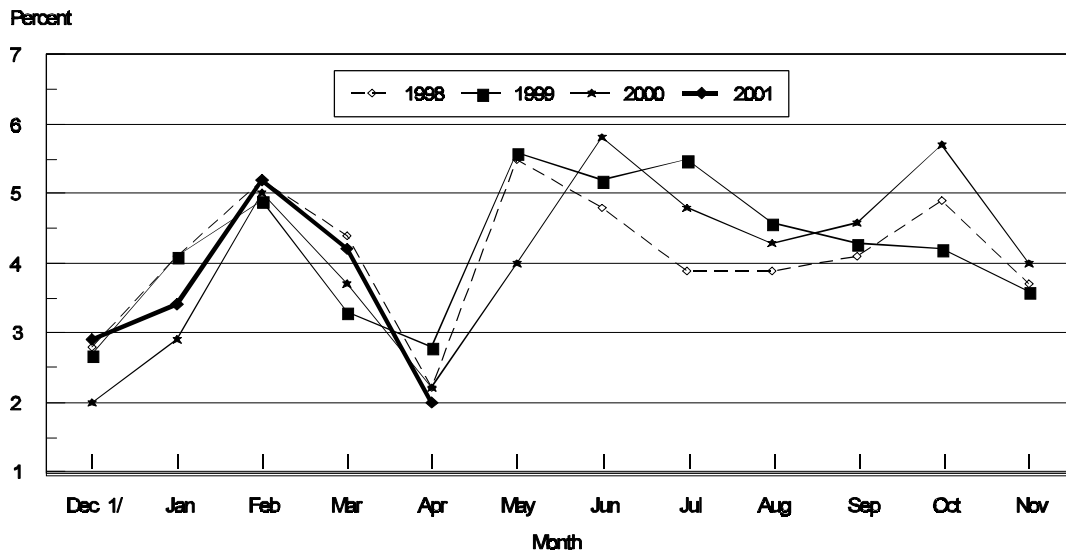
² Estimates for individual States are not available.

**Forced Molt: Percent of All Layers by Month,
United States, 2000-01 ¹**

Month	Percent Being Molted		Percent with Molt Completed	
	2000	2001	2000	2001
	<i>Percent</i>	<i>Percent</i>	<i>Percent</i>	<i>Percent</i>
Jan	2.9	3.4	22.9	24.1
Feb	5.0	5.1	21.4	22.4
Mar	3.7	4.2	22.1	23.1
Apr	2.2	2.0	22.5	23.1
May	4.0		22.3	
Jun	5.8		20.5	
Jul	4.8		21.9	
Aug	4.3		21.8	
Sep	4.6		22.6	
Oct	5.7		22.5	
Nov	4.0		23.2	
Dec	2.9		25.8	

¹ As of first of month.

**All Layers : United States
Percent Being Molted, 1998 - 2001
First of Month**



1/ Previous Year

**Forced Molt: Percent of All Layers by State
and United States, April 2000-01 ¹**

State	Percent Being Molted		Percent with Molt Completed	
	2000	2001	2000	2001
	<i>Percent</i>	<i>Percent</i>	<i>Percent</i>	<i>Percent</i>
AL	1.5	0.0	11.0	11.0
AR	2.5	1.0	5.0	11.5
CA	3.0	3.0	40.0	33.5
CO	0.0	0.0	20.0	25.0
CT	0.0	0.0	14.0	9.5
FL	2.5	2.0	33.0	33.0
GA	1.0	2.0	16.0	20.5
HI	7.5	5.5	43.0	47.5
IL	0.5	0.5	25.0	27.0
IN	1.5	2.0	34.0	33.0
IA	3.5	2.5	30.5	27.0
ME	0.0	0.0	0.0	0.0
MD	0.0	2.5	38.5	20.5
MI	2.0	2.5	25.5	26.5
MN	3.5	4.5	31.5	32.5
MS	0.5	0.5	10.0	11.0
MO	3.0	0.0	23.0	18.5
NE	3.5	9.0	27.0	20.0
NY	0.5	0.0	5.5	2.5
NC	1.0	1.0	8.0	9.5
OH	2.0	2.0	11.5	23.0
OK	2.5	1.0	9.5	5.5
OR	5.5	0.0	35.5	36.0
PA	2.5	0.0	22.0	20.5
SC	1.5	0.0	33.0	21.5
SD	3.5	5.0	26.0	28.5
TX	1.0	1.0	21.5	22.5
VA	0.0	3.0	18.5	10.5
WA	6.0	5.5	42.0	43.0
WI	1.0	0.0	25.0	31.0
30 Sts	2.1	1.9	22.7	23.1
Oth Sts ²	3.4	2.7	19.7	24.5
US	2.2	2.0	22.5	23.1

¹ As of first of month.

² Estimates for individual States are not available.

**Hatchery Production: Eggs in Incubators, Chicks Hatched,
and Placements by Type, United States, March-April 2000-01**

Item	2000	2001	2001 as % of 2000
	<i>1,000</i>	<i>1,000</i>	<i>Percent</i>
Egg-Type			
Eggs in Incubators on Apr 1	32,995	35,984	109
Chicks Hatched During Mar	38,874	40,109	103
Chicks Hatched Jan thru Mar	107,708	116,283	108
Pullets Hatched During Mar for Intended Placements in Hatchery Supply Flocks	286	372	130
7-18 Month Earlier ¹	3,078	3,195	104
Broiler-Type			
Eggs in Incubators on Apr 1	635,798	627,159	99
Chicks Hatched During Mar	759,244	763,450	101
Chicks Hatched Jan thru Mar	2,214,309	2,167,837	98
Pullets Hatched During Mar for Intended Placements in Hatchery Supply Flocks	7,310	6,752	92
7-15 Months Earlier ²	63,899	60,480	95

¹ 2001 includes pullet chicks hatched Sep 1999 through Aug 2000.

² 2001 includes pullet chicks hatched Dec 1999 through Aug 2000.

**Egg-Type Eggs in Incubators: By Region and United States,
April 1, 2000-01**

Geographic Division	2000	2001	2001 as % of 2000
	<i>1,000</i>	<i>1,000</i>	<i>Percent</i>
North Atlantic	5,957	5,605	94
E North Central	7,360	9,394	128
W North Central	7,635	6,868	90
South Atlantic	3,122	3,420	110
South Central	4,435	5,553	125
West	4,486	5,144	115
US	32,995	35,984	109

Regional Listing:

North Atlantic = CT, ME, MA, NH, NJ, NY, PA, RI, VT.

E North Central = IL, IN, MI, OH, WI.

W North Central = IA, KS, MN, MO, NE, ND, SD.

South Atlantic = DE, FL, GA, MD, NC, SC, VA, WV.

South Central = AL, AR, KY, LA, MS, OK, TN, TX.

West = AK, AZ, CA, CO, HI, ID, MT, NM, NV, OR, UT, WA, WY.

**Egg-Type Chicks Hatched: By State and United States,
March 2000-01**

State	March			Jan-Mar		
	2000	2001	2001 as % of 2000	2000	2001	2001 as % of 2000
	<i>1,000</i>	<i>1,000</i>	<i>Percent</i>	<i>1,000</i>	<i>1,000</i>	<i>Percent</i>
AR	833	739	89	1,957	2,489	127
FL	1,014	1,002	99	3,092	2,937	95
GA	2,079	2,208	106	6,122	6,264	102
IN	5,297	7,084	134	18,382	21,775	118
IA	6,214	5,034	81	15,325	16,126	105
KS	202	295	146	714	807	113
MN	2,012	1,375	68	5,437	4,783	88
MO	381	381	100	1,012	1,012	100
PA	6,300	5,457	87	15,852	16,537	104
Oth Sts ¹	14,542	16,534	114	39,815	43,553	109
US	38,874	40,109	103	107,708	116,283	108

¹ Not published separately to avoid disclosing data for individual operations.

Egg-Type Chicks Hatched: By Month, United States, 1999-01

Month	By Months				Cumulative			
	1999	2000	2001	2001 as % of 2000	1999	2000	2001	2001 as % of 2000
	<i>1,000</i>	<i>1,000</i>	<i>1,000</i>	<i>Percent</i>	<i>1,000</i>	<i>1,000</i>	<i>1,000</i>	<i>Percent</i>
Jan	35,242	34,178	37,976	111	35,242	34,178	37,976	111
Feb	36,367	34,656	38,198	110	71,609	68,834	76,174	111
Mar	41,172	38,874	40,109	103	112,781	107,708	116,283	108
Apr	42,285	36,649			155,066	144,357		
May	40,726	41,182			195,792	185,539		
Jun	41,439	37,265			237,231	222,804		
Jul	34,275	33,237			271,506	256,041		
Aug	35,518	34,324			307,024	290,365		
Sep	39,287	36,316			346,311	326,681		
Oct	39,044	36,077			385,355	362,758		
Nov	32,802	32,290			418,157	395,048		
Dec	33,564	34,690			451,721	429,738		

**Intended Placements: Egg-Type Pullet Chicks for Hatchery Supply
Flocks by Month and Total, United States, 1999-01 ¹**

Month	Pullet Chicks Hatched			2001 as % of 2000	Cumulative Potential Placements Relative to Current Supply Flocks 7-18 Months Earlier ²		
	1999	2000	2001		1999	2000	2001
	<i>1,000</i>	<i>1,000</i>	<i>1,000</i>	<i>Percent</i>	<i>1,000</i>	<i>1,000</i>	<i>1,000</i>
Jan	166	212	322	152	3,029	3,012	3,117
Feb	267	251	302	120	3,120	2,945	3,238
Mar	257	286	372	130	3,020	3,078	3,195
Apr	287	309			2,942	2,981	3,245
May	283	343			3,044	2,903	3,248
Jun	187	223			3,132	2,948	3,363
Jul	231	352			3,108	2,940	3,512
Aug	318	275			3,085	2,986	3,622
Sep	227	277			3,102	2,970	3,673
Oct	280	283			3,134	2,999	3,759
Nov	262	377			3,088	3,021	
Dec	175	324			3,179	3,081	
Total	2,940	3,512					

¹ Reported by leading breeders. Coverage may not be 100 percent. Includes expected pullet chicks from eggs sold during the preceding month at the rate of 125 pullet chicks per 30 dozen case of eggs.

² For March 2001, includes breeder pullet chicks hatched Sep 1999 through Aug 2000. The 7-18 months represent the first laying cycle. Molting and additional laying cycles will increase the cumulative potential placements.

**Broiler-Type Eggs in Incubators: By Region
and United States, April 1, 2000-01**

Geographic Division	2000	2001	2001 as % of 2000
	<i>1,000</i>	<i>1,000</i>	<i>Percent</i>
North Atlantic	11,571	12,094	105
E North Central	7,829	7,155	91
W North Central	21,033	20,415	97
South Atlantic	241,732	236,209	98
South Central	327,655	325,576	99
West	25,978	25,710	99
US	635,798	627,159	99

**Broiler-Type Chicks Hatched: By State
and United States, March 2000-01**

State	March			Jan-Mar		
	2000	2001	2001 as % of 2000	2000	2001	2001 as % of 2000
	<i>1,000</i>	<i>1,000</i>	<i>Percent</i>	<i>1,000</i>	<i>1,000</i>	<i>Percent</i>
AL	104,698	104,767	100	304,292	297,437	98
AR	109,874	110,286	100	324,416	310,276	96
DE	15,797	14,237	90	45,722	41,859	92
FL	9,757	9,493	97	28,160	26,608	94
GA	112,302	114,365	102	329,763	324,521	98
MD	30,759	31,928	104	89,675	88,444	99
MS	65,358	69,069	106	191,440	194,882	102
NC	67,302	66,150	98	192,965	188,787	98
PA	12,803	13,192	103	38,118	37,442	98
SC	17,401	17,101	98	50,062	49,150	98
TX	53,449	54,397	102	153,621	155,223	101
VA	24,239	24,654	102	69,758	69,877	100
CA TN & WV	40,438	41,983	104	117,677	118,547	101
15 Sts ¹	664,177	671,622	101	1,935,669	1,903,053	98
Oth Sts ²	95,067	91,828	97	278,640	264,784	95
US	759,244	763,450	101	2,214,309	2,167,837	98

¹ States in the weekly hatchery production estimating program.

² Not published separately to avoid disclosing data for individual operations.

Broiler-Type Chicks Hatched: By Month, United States, 1999-01

Month	By Months				Cumulative			
	1999	2000	2001	2001 as % of 2000	1999	2000	2001	2001 as % of 2000
	<i>1,000</i>	<i>1,000</i>	<i>1,000</i>	<i>Percent</i>	<i>1,000</i>	<i>1,000</i>	<i>1,000</i>	<i>Percent</i>
Jan	735,768	751,599	733,889	98	735,768	751,599	733,889	98
Feb	662,604	703,466	670,498	95	1,398,372	1,455,065	1,404,387	97
Mar	755,804	759,244	763,450	101	2,154,176	2,214,309	2,167,837	98
Apr	734,734	746,830			2,888,910	2,961,139		
May	766,422	774,983			3,655,332	3,736,122		
Jun	744,372	747,327			4,399,704	4,483,449		
Jul	751,627	740,188			5,151,331	5,223,637		
Aug	741,716	740,890			5,893,047	5,964,527		
Sep	700,016	702,625			6,593,063	6,667,152		
Oct	697,428	711,278			7,290,491	7,378,430		
Nov	676,762	675,038			7,967,253	8,053,468		
Dec	748,170	738,664			8,715,423	8,792,132		

**Intended Placements: Broiler-Type Pullet Chicks for Hatchery
Supply Flocks by Month and Total, 1999-01 ¹**

Month	Pullet Chicks Hatched			2001 as % of 2000	Cumulative Potential Placements Relative to Current Supply Flocks 7-15 Months Earlier ²		
	1999	2000	2001		1999	2000	2001
	<i>1,000</i>	<i>1,000</i>	<i>1,000</i>	<i>Percent</i>	<i>1,000</i>	<i>1,000</i>	<i>1,000</i>
US Place- ments							
Jan	7,059	6,861	6,685	97	59,403	64,139	63,304
Feb	6,882	7,001	6,748	96	59,937	64,344	62,493
Mar	7,284	7,310	6,752	92	60,699	64,697	62,797
Apr	7,038	6,764			61,775	64,663	62,267
May	7,736	7,435			61,893	64,725	62,100
Jun	7,041	6,829			62,877	64,827	62,204
Jul	7,088	6,310			63,005	64,542	61,323
Aug	7,665	7,288			63,377	64,365	61,244
Sep	6,870	6,469			63,197	63,630	60,557
Oct	7,121	6,694			63,549	63,899	60,480
Nov	6,984	7,105			63,799	63,575	
Dec	6,999	6,429			64,426	63,345	
Annual Total	85,767	82,495					
Total Place- ments ³							
Jan	8,679	8,069	7,615	94			
Feb	8,473	8,302	8,275	100			
Mar	8,863	8,798	8,325	95			
Apr	8,572	8,522					
May	9,463	8,917					
Jun	8,333	8,201					
Jul	8,342	7,621					
Aug	8,983	8,657					
Sep	8,044	8,042					
Oct	8,223	8,260					
Nov	8,220	8,702					
Dec	8,305	7,614					
Annual Total	102,500	99,705					

¹ Reported by leading breeders. Coverage may not be 100 percent. Includes expected pullet chicks from eggs sold during the preceding month at the rate of 125 pullet chicks per 30 dozen case of eggs.

² For Mar 2001, includes breeder pullet chicks hatched Dec 1999 through Aug 2000.

³ U.S. production of intended placements worldwide.

Procedures and Reliability

Data Sources: Primary data for the "**Chickens and Eggs**" report are from weekly and/or monthly questionnaires sent to producers. An attempt is made to collect information for layer and egg estimates from each known contractor and independent producer who has over 30,000 table egg layers. Coverage for operations with less than 30,000 table egg layers are estimated each month based on data reported in December. Approximately 900 contractors, independent egg producers, and started pullet operations are contacted each month. All known hatcheries, approximately 330, are contacted for information on a weekly and/or monthly basis.

Revisions: The previous month's estimates are subject to revision if late reports or corrected data indicates a different level. Additionally, revisions needed after the monthly report will be made at the end of the marketing year and published in the annual summaries of "**Chickens and Eggs Summary**" and "**Hatchery Production**".

Procedures and Reliability: Operations are mailed a questionnaire and given adequate time to respond by mail. Those that do not respond are phoned. Great care is exercised to ensure that all operations are accounted for during each survey period. However, there are usually missing reports that must be accounted for in the estimates.

Sound statistical methodology is employed to derive estimates from the reported data. All data are checked for unusual values. All operations' data are compared to their own past operating profiles and also to trends from other operations. Data for missing operations are estimated based on similar operations or historical data. Survey data are subject to non-sampling errors such as omissions and mistakes in reporting and in processing. While these errors cannot be measured directly, they are minimized by reviewing all data for consistency and reasonableness.

Egg-type chicks hatched are comprised of all chicks of egg-type domesticated breeds including males and chicks destined for hatchery supply flocks and research purposes. The relationship of chicks hatched to chicken inventory and poultry marketings is carefully monitored. The disposition of egg-type chicks hatched prior to placement into the laying flock can vary significantly, which can make comparisons to changes in layer inventory inconsistent over time.

Intended placement data reported by leading breeders include pullet chicks expected from eggs sold the preceding month. The breeders in this report account for a large percentage of replacement pullets for hatchery supply flocks. Production of replacement pullets by these breeders indicates the number of pullets available to hatchery egg supply flocks several months before the pullets will actually move into the flocks. Beginning with the January 1996 publication the broiler-type cumulative potential placements went from 7-14 months earlier to 7-15 months earlier. The egg-type cumulative potential placements of 7-18 months represent the first laying cycle. Molting and additional laying cycles will increase the cumulative potential placements of egg-type hatching flocks.

The next "Chickens and Eggs" report will be released at 3 p.m. ET on May 22, 2001.

The United States Department of Agriculture (USDA) prohibits discrimination in all its programs on the basis of race, color, national origin, gender, religion, age, disability, political beliefs, sexual orientation, and marital or family status. (Not all prohibited bases apply to all programs.) Persons with disabilities who require alternative means for communication of program information (braille, large print, audiotape, etc.) should contact the USDA's TARGET Center at 202-720-2600 (voice and TDD).

To file a complaint of discrimination, write USDA, Director, Office of Civil Rights, Room 326-W, Whitten Building, 14th and Independence Avenue, SW, Washington, D.C., 20250-9410, or call 202-720-5964 (voice or TDD). USDA is an equal opportunity provider and employer.

ACCESS TO REPORTS!!

For your convenience, there are several ways to obtain NASS reports, data products, and services:

INTERNET ACCESS

All NASS reports are available free of charge on the worldwide Internet. For access, connect to the Internet and go to the NASS Home Page at: <http://www.usda.gov/nass/>. Select "Today's Reports" or Publications and then Reports by Calendar or Publications and then Search, by Title or Subject.

E-MAIL SUBSCRIPTION

There are two options for subscribing via e-mail. All NASS reports are available by subscription free of charge direct to your e-mail address. 1) Starting with the NASS Home Page at <http://www.usda.gov/nass/>, click on **Publications**, then click on the **Subscribe by E-mail** button which takes you to the page describing e-mail delivery of reports. Finally, click on **Go to the Subscription Page** and follow the instructions. 2) If you do NOT have Internet access, send an e-mail message to: usda-reports@usda.mannlib.cornell.edu. In the body of the message type the word: **list**.

AUTOFAX ACCESS

NASSFax service is available for some reports from your fax machine. Please call 202-720-2000, using the handset attached to your fax. Respond to the voice prompts. Document 0411 is a list of available reports.

PRINTED REPORTS OR DATA PRODUCTS

CALL OUR TOLL-FREE ORDER DESK: 800-999-6779 (U.S. and Canada)
Other areas, please call 703-834-0125 FAX: 703-834-0110
(Visa, MasterCard, check, or money order acceptable for payment.)

ASSISTANCE

For **assistance** with general agricultural statistics or further information about NASS or its products or services, contact the **Agricultural Statistics Hotline** at **800-727-9540**, 7:30 a.m. to 4:00 p.m. ET, or e-mail: nass@nass.usda.gov.