

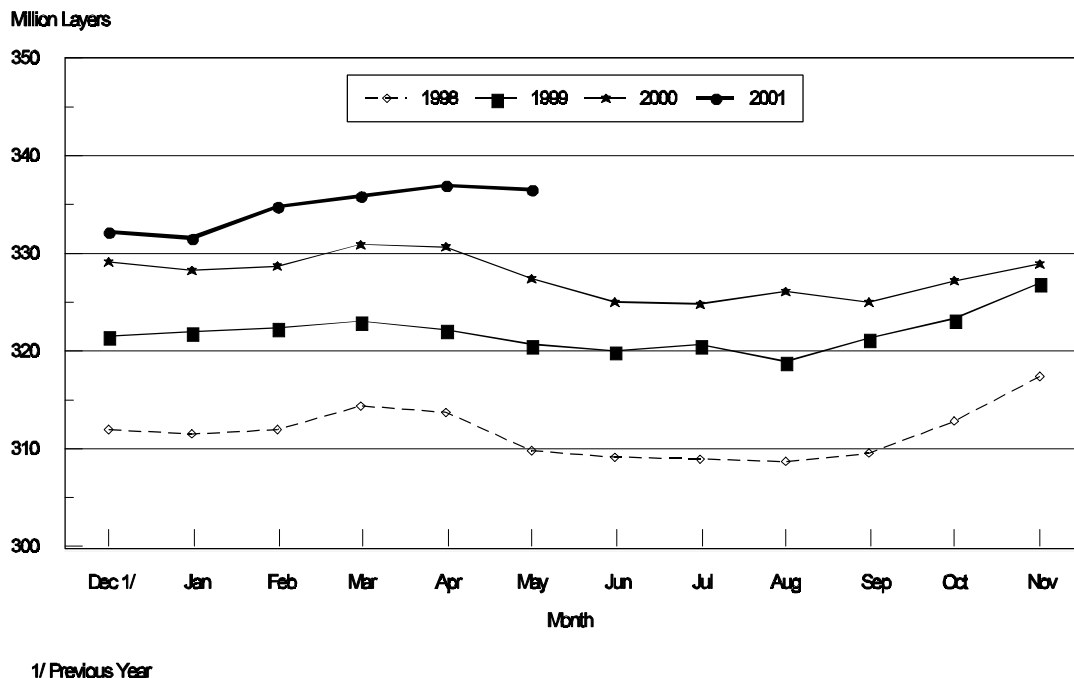
Released May 22, 2001, by the National Agricultural Statistics Service (NASS), Agricultural Statistics Board, U.S. Department of Agriculture. For information on Chickens and Eggs call Tom Kruchten at (202) 690-4870. For information on Hatch call Jody Roberts at (202) 690-8632, office hours 7:30 a.m. to 4:00 p.m. ET.

April Egg Production Up 1 Percent

U.S. egg production totaled 7.09 billion during April 2001, up 1 percent from last year. Production included 6.01 billion table eggs and 1.08 billion hatching eggs, of which 1.01 billion were broiler-type and 66.0 million were egg-type. The total number of layers during April 2001 averaged 337 million, up 2 percent from the total average number of layers during April 2000. April egg production per 100 layers was 2,106 eggs, down 1 percent from 2,130 eggs in April 2000.

April 2001 contained 21 weekdays and four Saturdays, compared to 20 weekdays and 5 Saturdays in April 2000.

All Layers: 1st of Month United States, 1998 - 2001



All layers in the U.S. on May 1, 2001, totaled 337 million, up 3 percent from a year ago. The 337 million layers consisted of 277 million layers producing table or commercial type eggs, 56.9 million layers producing broiler-type hatching eggs, and 2.96 million layers producing egg-type hatching eggs. Rate of lay per day on May 1, 2001, averaged 69.4 eggs per 100 layers, down 2 percent from the 70.6 eggs a year ago.

Laying flocks in the 30 major egg producing States produced 6.65 billion eggs during April 2001, up 1 percent from April 2000. The average number of layers during April, at 316 million, was up 2 percent from a year earlier.

Individual State estimates are available for the 30 major egg producing States. These States are listed on page 8 of this release and account for approximately 94 percent of the total U.S. egg production. Production for the other States are grouped into an "Other States" category and combined with the 30 States published individually to obtain a U.S. estimate. Individual State estimates for "Other States" are available annually in the "**Chickens and Eggs Summary**" report.

Egg-Type Chicks Hatched Up 14 Percent

Egg-type chicks **hatched** during April totaled 42 million, up 14 percent from April 2000. **Eggs in incubators** totaled 37.0 million on May 1, 2001, up 1 percent from a year ago.

Domestic placements of **egg-type pullet chicks for future hatchery supply flocks** by leading breeders totaled 293,000 during April 2001, down 5 percent from April 2000.

Broiler Hatch Down Slightly Percent

The April 2001 **hatch** of broiler-type chicks, at 745 million, was down slightly from April of the previous year. There were 635 million **eggs in incubators** on May 1, 2001, down 1 percent from a year earlier.

Leading breeders placed 6.40 million **broiler-type pullet chicks for future domestic hatchery supply flocks** during April 2001, down 5 percent from April 2000.

**All Layers: Average Number on Hand During the Month,
United States, 1998-01**

Month	1998	1999	2000	2001
	<i>1,000 Layers</i>	<i>1,000 Layers</i>	<i>1,000 Layers</i>	<i>1,000 Layers</i>
Dec ¹	311,898	321,972	328,828	331,962
Jan	311,906	322,356	328,557	333,283
Feb	313,285	322,827	329,843	335,533
Mar	314,141	322,782	330,862	336,594
Apr	311,957	321,539	329,223	336,859
May	309,655	320,510	326,326	
Jun	309,206	320,441	324,957	
Jul	308,967	319,819	325,563	
Aug	309,291	320,188	325,753	
Sep	311,358	322,409	326,237	
Oct	315,222	325,287	328,178	
Nov	319,625	328,268	330,678	

¹ December preceding year.

**Eggs: Production During the Month by Type,
United States, 2000-01**

Month	Total Eggs		Table Eggs		Hatching Eggs	
	2000	2001	2000	2001	2000	2001
	<i>Million Eggs</i>	<i>Million Eggs</i>	<i>Million Eggs</i>	<i>Million Eggs</i>	<i>Million Eggs</i>	<i>Million Eggs</i>
Dec ¹	7,279	7,279	6,198	6,200	1,081	1,079
Jan	7,157	7,217	6,070	6,119	1,087	1,098
Feb	6,648	6,519	5,625	5,512	1,023	1,007
Mar	7,234	7,331	6,110	6,219	1,124	1,112
Apr	7,013	7,093	5,911	6,013	1,102	1,080
May	7,104		5,970		1,134	
Jun	6,801		5,722		1,079	
Jul	7,061		5,952		1,109	
Aug	7,104		6,015		1,089	
Sep	6,854		5,820		1,034	
Oct	7,130		6,063		1,067	
Nov	7,027		5,989		1,038	
During Year	84,412	35,439	71,445	30,063	12,967	5,376

¹ December preceding year.

**Layers and Eggs: Layers on Hand and Eggs Produced by Type,
and Forced Molt, United States, March-April 2000-01**

Item	Unit	2000	2001	2001 as % of 2000
Layers During Mar	1,000			
All Layers		330,862	336,594	102
Table Egg Type		271,046	277,207	102
Hatching Egg Type		59,816	59,387	99
Broiler-Type Hatching		57,047	56,597	99
Egg-Type Hatching		2,769	2,790	101
Eggs per 100 Layers During Mar	Number			
All Layers		2,186	2,178	100
Table Egg Type		2,254	2,243	100
Hatching Egg Type		1,879	1,872	100
Broiler-Type Hatching		1,853	1,846	100
Egg-Type Hatching		2,420	2,401	99
Eggs Produced During Mar	Million			
All Layers		7,234	7,331	101
Table Egg Type		6,110	6,219	102
Hatching Egg Type		1,124	1,112	99
Broiler-Type Hatching		1,057	1,045	99
Egg-Type Hatching		67	67	100
Layers on Apr 1	1,000			
All Layers		330,807	337,096	102
Table Egg Type		270,646	277,922	103
Hatching Egg Type		60,161	59,174	98
Broiler-Type Hatching		57,341	56,379	98
Egg-Type Hatching		2,820	2,795	99
Eggs per 100 Layers on Apr 1	Number			
All Layers		71.2	71.0	100
Table Egg Type		73.5	73.2	100
Hatching Egg Type		60.7	60.3	99
Broiler-Type Hatching		59.8	59.5	99
Egg-Type Hatching		78.3	76.5	98
Forced Molt Layers on Apr 1	Percent			
Percent Being Molted		2.2	2.0	91
Percent with Molt Completed		22.5	23.1	103
Layers Sold for Slaughter During Mar	1,000	17,842	15,856	89
Layers Rendered, Died, Destroyed, Composted or Disappeared For Any Reason During Mar	1,000	3,820	3,844	101
Pullets Less Than 20 Weeks of Age, Apr 1	1,000	95,737	96,195	100
Pullets Added During Mar ¹	1,000	24,920	27,140	109

¹ Pullet chicks one day old added to pullet flocks.

**Layers and Eggs: Layers on Hand and Eggs Produced by Type,
and Forced Molt, United States, April-May 2000-01**

Item	Unit	2000 ¹	2001	2001 as % of 2000
Layers During Apr	1,000			
All Layers		329,223	336,859	102
Table Egg Type		268,708	277,331	103
Hatching Egg Type		60,515	59,528	98
Broiler-Type Hatching		57,643	56,646	98
Egg-Type Hatching		2,872	2,882	100
Eggs per 100 Layers During Apr	Number			
All Layers		2,130	2,106	99
Table Egg Type		2,200	2,168	99
Hatching Egg Type		1,821	1,814	100
Broiler-Type Hatching		1,797	1,790	100
Egg-Type Hatching		2,298	2,290	100
Eggs Produced During Apr	Million			
All Layers		7,013	7,093	101
Table Egg Type		5,911	6,013	102
Hatching Egg Type		1,102	1,080	98
Broiler-Type Hatching		1,036	1,014	98
Egg-Type Hatching		66	66	100
Layers on May 1	1,000			
All Layers		327,597	336,570	103
Table Egg Type		266,748	276,712	104
Hatching Egg Type		60,849	59,858	98
Broiler-Type Hatching		57,934	56,897	98
Egg-Type Hatching		2,915	2,961	102
Eggs per 100 Layers on May 1	Number			
All Layers		70.6	69.4	98
Table Egg Type		73.0	71.3	98
Hatching Egg Type		60.3	60.5	100
Broiler-Type Hatching		59.6	59.6	100
Egg-Type Hatching		74.8	76.8	103
Forced Molt Layers, May 1	Percent			
Percent Being Molted		4.0	5.1	128
Percent with Molt Completed		22.3	20.9	94
Layers Sold for Slaughter During Apr	1,000	16,216	15,194	94
Layers Rendered, Died, Destroyed, Composted or Disappeared For Any Reason During Apr	1,000	1,790	4,818	269
Pullets Less Than 20 Weeks of Age, May 1	1,000	97,959	97,476	100
Pullets Added During Apr ²	1,000	22,172	23,053	104

¹ Revised.

² Pullet chicks one day old added to pullet flocks.

Layers and Eggs: Layers on Hand and Eggs Produced by Type, and Forced Molt, 30 Selected States, March-April, 2000-01 ¹

Item	Unit	2000	2001	2001 as % of 2000
Layers During Mar	1,000			
All Layers		310,553	315,447	102
Table Egg Type		255,527	260,785	102
Hatching Egg Type		55,026	54,662	99
Broiler-Type Hatching		52,373	51,977	99
Egg-Type Hatching		2,653	2,685	101
Eggs per 100 Layers During Mar	Number			
All Layers		2,186	2,178	100
Table Egg Type		2,253	2,243	100
Hatching Egg Type		1,872	1,870	100
Broiler-Type Hatching		1,844	1,843	100
Egg-Type Hatching		2,412	2,384	99
Eggs Produced During Mar	Million			
All Layers		6,788	6,872	101
Table Egg Type		5,758	5,850	102
Hatching Egg Type		1,030	1,022	99
Broiler-Type Hatching		966	958	99
Egg-Type Hatching		64	64	100
Layers on Apr 1	1,000			
All Layers		310,369	315,857	102
Table Egg Type		255,028	261,431	103
Hatching Egg Type		55,341	54,426	98
Broiler-Type Hatching		52,660	51,736	98
Egg-Type Hatching		2,681	2,690	100
Eggs per 100 Layers on Apr 1	Number			
All Layers		71.2	70.9	100
Table Egg Type		73.5	73.1	99
Hatching Egg Type		60.5	60.1	99
Broiler-Type Hatching		59.5	59.2	99
Egg-Type Hatching		78.4	76.1	97
Forced Molt Layers on Apr 1	Percent			
Percent Being Molted		2.1	1.9	90
Percent with Molt Completed		22.7	23.1	102
Layers Sold for Slaughter During Mar	1,000	17,100	15,055	88
Layers Rendered, Died, Destroyed, Composted or Disappeared For Any Reason During Mar	1,000	3,601	3,672	102
Pullets Less Than 20 Weeks of Age, Apr 1	1,000	90,237	90,417	100
Pullets Added During Mar ²	1,000	24,027	26,050	108

¹ The 30 States are listed in the table on page 8.

² Pullet chicks one day old added to pullet flocks.

Layers and Eggs: Layers on Hand and Eggs Produced by Type, and Forced Molt, 30 Selected States, April-May, 2000-01¹

Item	Unit	2000 ²	2001	2001 as % of 2000
Layers During Apr	1,000			
All Layers		308,811	315,960	102
Table Egg Type		253,164	261,178	103
Hatching Egg Type		55,647	54,782	98
Broiler-Type Hatching		52,897	51,996	98
Egg-Type Hatching		2,750	2,786	101
Eggs per 100 Layers During Apr	1,000			
All Layers		2,128	2,103	99
Table Egg Type		2,197	2,165	99
Hatching Egg Type		1,810	1,809	100
Broiler-Type Hatching		1,785	1,783	100
Egg-Type Hatching		2,291	2,297	100
Eggs Produced During Apr	Million			
All Layers		6,570	6,646	101
Table Egg Type		5,563	5,655	102
Hatching Egg Type		1,007	991	98
Broiler-Type Hatching		944	927	98
Egg-Type Hatching		63	64	102
Layers on May 1	1,000			
All Layers		307,224	316,023	103
Table Egg Type		251,286	260,904	104
Hatching Egg Type		55,938	55,119	99
Broiler-Type Hatching		53,127	52,244	98
Egg-Type Hatching		2,811	2,875	102
Eggs per 100 Layers on May 1	Number			
All Layers		70.6	69.3	98
Table Egg Type		72.9	71.2	98
Hatching Egg Type		60.0	60.3	101
Broiler-Type Hatching		59.2	59.4	100
Egg-Type Hatching		74.3	76.6	103
Forced Molt Layers, May 1	Percent			
Percent Being Molted		4.0	5.1	128
Percent with Molt Completed		22.4	20.8	93
Layers Sold for Slaughter During Apr	1,000	15,425	13,882	90
Layers Rendered, Died, Destroyed, Composted or Disappeared For Any Reason During Apr	1,000	1,781	4,526	254
Pullets Less Than 20 Weeks of Age, May 1	1,000	92,095	91,562	99
Pullets Added During Apr ³	1,000	20,893	22,013	105

¹ The 30 States are listed in the table on page 8.

² Revised.

³ Pullet chicks one day old added to pullet flocks.

**Layers and Eggs: Layers on Hand and Eggs Produced by State
and United States, During March 2000-01**

State	Table Egg Layers in Flocks 30,000 and Above		All Layers ¹		Eggs per 100 for All Layers ¹	
	2000	2001	2000	2001	2000	2001
	<i>1,000</i>	<i>1,000</i>	<i>1,000</i>	<i>1,000</i>	<i>Number</i>	<i>Number</i>
AL	3,230	2,887	10,636	10,364	1,937	1,949
AR	4,957	5,018	15,684	15,163	1,957	1,985
CA	23,645	22,746	24,243	23,301	2,252	2,159
CO	3,425	3,272	3,936	3,743	2,236	2,217
CT	2,975	3,132	3,109	3,219	2,316	2,454
FL	9,940	10,199	10,620	10,934	2,241	2,149
GA	12,070	11,908	21,370	21,385	2,143	2,104
HI	586	584	615	613	2,081	1,876
IL	3,356	2,898	3,622	3,154	2,347	2,315
IN	22,213	22,286	22,901	22,999	2,279	2,252
IA	26,822	31,215	27,631	31,962	2,276	2,231
ME	4,127	3,880	4,238	3,941	2,383	2,124
MD	3,027	2,835	3,416	3,164	2,225	2,276
MI	6,201	6,428	6,484	6,700	2,209	2,227
MN	11,935	11,493	12,663	12,221	2,218	2,160
MS	1,839	1,862	6,859	6,787	2,027	1,974
MO	4,829	5,429	6,210	6,760	2,238	2,204
NE	11,638	11,548	11,788	11,648	2,146	2,198
NY	3,799	3,823	4,001	4,149	2,374	2,362
NC	3,402	3,454	11,302	11,163	1,902	1,917
OH	30,840	29,610	31,503	30,251	2,162	2,245
OK	1,959	1,919	4,097	4,145	1,977	2,027
OR	2,868	2,813	3,047	2,987	2,265	2,377
PA	22,046	23,114	23,530	24,623	2,303	2,376
SC	3,938	4,422	4,879	5,442	2,050	2,113
SD	1,926	2,068	2,186	2,268	2,150	2,160
TX	13,158	14,525	17,278	18,969	2,153	2,156
VA	1,432	1,562	3,476	3,658	2,043	1,832
WA	4,664	4,975	4,784	5,054	2,349	2,339
WI	3,795	4,058	4,445	4,680	2,385	2,265
30 Sts	250,642	255,963	310,553	315,447	2,186	2,178
Oth Sts ²	14,487	15,229	20,309	21,147	2,196	2,175
US	265,129	271,192	330,862	336,594	2,186	2,178

¹ Includes all layers and eggs produced in both table egg and hatching egg flocks regardless of size.

² Estimates for individual States are not available.

**Layers and Eggs: Layers on Hand and Eggs Produced by State
and United States, During April 2000-01**

State	Table Egg Layers in Flocks 30,000 and Above		All Layers ¹		Eggs per 100 for All Layers ¹	
	2000	2001	2000	2001	2000	2001
	<i>1,000</i>	<i>1,000</i>	<i>1,000</i>	<i>1,000</i>	<i>Number</i>	<i>Number</i>
AL	3,019	2,873	10,531	10,344	1,890	1,895
AR	4,956	4,605	15,654	14,637	1,885	1,954
CA	23,388	22,854	23,973	23,405	2,152	2,098
CO	3,468	3,053	3,970	3,563	2,166	2,133
CT	2,927	3,103	3,061	3,190	2,221	2,320
FL	9,878	10,046	10,565	10,791	2,139	2,048
GA	11,582	11,892	20,946	21,503	2,077	2,014
HI	586	572	615	602	2,033	1,894
IL	3,383	3,138	3,654	3,383	2,189	2,158
IN	22,383	22,396	23,071	23,115	2,224	2,146
IA	26,851	31,662	27,685	32,483	2,236	2,180
ME	4,152	4,158	4,240	4,221	2,311	2,220
MD	2,937	2,884	3,335	3,221	2,129	2,328
MI	6,037	6,518	6,321	6,802	2,139	2,120
MN	11,715	11,278	12,446	11,996	2,105	2,067
MS	1,861	1,837	7,010	6,764	1,954	1,892
MO	4,584	5,327	5,897	6,619	2,137	2,160
NE	11,592	11,527	11,742	11,627	2,129	2,142
NY	3,772	3,750	3,989	4,085	2,306	2,203
NC	3,149	3,348	11,042	11,233	1,829	1,843
OH	30,963	29,604	31,633	30,242	2,165	2,186
OK	1,957	1,879	4,127	4,052	1,914	1,925
OR	2,848	2,843	3,023	3,025	2,183	2,281
PA	21,428	23,460	23,116	25,006	2,241	2,227
SC	4,019	4,486	4,986	5,450	2,006	2,037
SD	1,932	2,169	2,192	2,369	2,144	1,984
TX	12,960	14,662	17,172	19,074	2,137	2,102
VA	1,416	1,549	3,502	3,606	2,027	1,858
WA	4,706	4,948	4,826	5,027	2,267	2,292
WI	3,830	3,922	4,487	4,525	2,318	2,144
30 Sts	248,279	256,343	308,811	315,960	2,128	2,103
Oth Sts ²	14,515	14,960	20,412	20,899	2,170	2,144
US	262,794	271,303	329,223	336,859	2,130	2,106

¹ Includes all layers and eggs produced in both table egg and hatching egg flocks regardless of size.

² Estimates for individual States are not available.

**Egg Production: By Type, State, and United States,
March 2000-01**

State	Total Production		Table Eggs ¹		Hatching Eggs ¹	
	2000	2001	2000	2001	2000	2001
	<i>Million Eggs</i>	<i>Million Eggs</i>	<i>Million Eggs</i>	<i>Million Eggs</i>	<i>Million Eggs</i>	<i>Million Eggs</i>
AL	206	202	71	64	135	138
AR	307	301	111	113	196	188
CA	546	503				
CO	88	83				
CT	72	79				
FL	238	235	226	222	12	13
GA	458	450	276	269	182	181
HI	12.8	11.5	12.8	11.5	0	0
IL	85	73	81	69	4	4
IN	522	518	508	505	14	13
IA	629	713				
ME	101	84				
MD	76	72	70	67	6	5
MI	143	149				
MN	281	264	271	255	10	9
MS	139	134	45	44	94	90
MO	139	149				
NE	253	256	253	256	0	0
NY	95	98				
NC	215	214	83	81	132	133
OH	681	679				
OK	81	84	46	47	35	37
OR	69	71	67	69	2	2
PA	542	585	524	565	18	20
SC	100	115	83	95	17	20
SD	47	49	47	49	0	0
TX	372	409				
VA	71	67	34	30	37	37
WA	112	118				
WI	106	106				
30 Sts	6,788	6,872	5,758	5,850	1,030	1,022
Oth Sts ²	446	460	352	369	94	90
US	7,234	7,331	6,110	6,219	1,124	1,112

¹ Data by type of flock not shown for some States to avoid disclosing individual operations.

² Estimates for individual States are not available.

**Egg Production: By Type, State, and United States,
April 2000-01**

State	Total Production		Table Eggs ¹		Hatching Eggs ¹	
	2000	2001	2000	2001	2000	2001
	<i>Million Eggs</i>	<i>Million Eggs</i>	<i>Million Eggs</i>	<i>Million Eggs</i>	<i>Million Eggs</i>	<i>Million Eggs</i>
AL	199	196	68	62	131	134
AR	295	286	107	103	188	183
CA	516	491				
CO	86	76				
CT	68	74				
FL	226	221	214	208	12	13
GA	435	433	257	257	178	176
HI	12.5	11.4	12.5	11.4	0	0
IL	80	73	76	70	4	3
IN	513	496	500	484	13	12
IA	619	708				
ME	98	94				
MD	71	75	65	70	6	5
MI	135	144				
MN	262	248	252	239	10	9
MS	137	128	45	41	92	87
MO	126	143				
NE	250	249	250	249	0	0
NY	92	90				
NC	202	207	74	78	128	129
OH	685	661				
OK	79	78	44	44	35	34
OR	66	69	64	67	2	2
PA	518	557	497	537	21	20
SC	100	111	83	93	17	18
SD	47	47	47	47	0	0
TX	367	401				
VA	71	67	33	31	38	36
WA	109	115				
WI	104	97				
30 Sts	6,570	6,646	5,563	5,655	1,007	991
Oth Sts ²	443	448	348	358	95	89
US	7,013	7,093	5,911	6,013	1,102	1,080

¹ Data by type of flock not shown for some States to avoid disclosing individual operations.

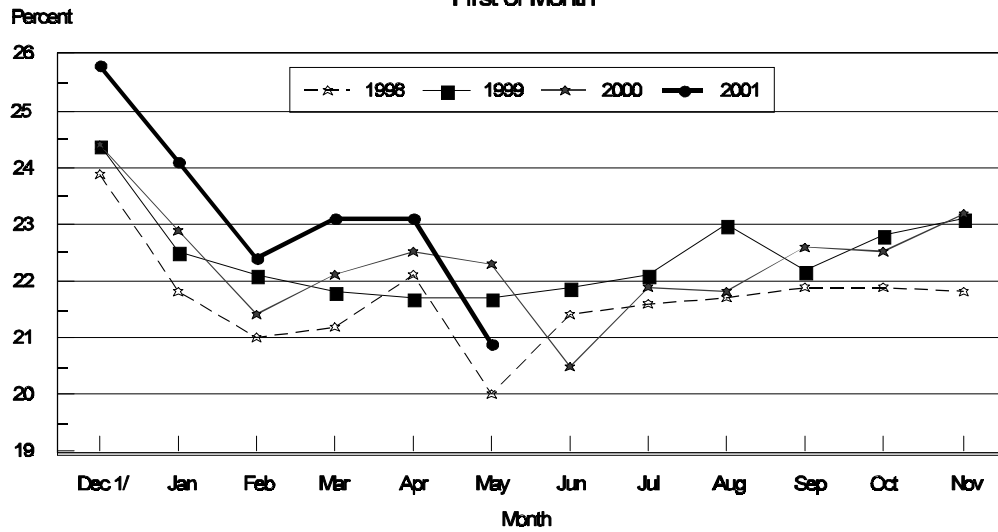
² Estimates for individual States are not available.

**Forced Molt: Percent of All Layers by Month,
United States, 2000-01¹**

Month	Percent Being Molted		Percent with Molt Completed	
	2000	2001	2000	2001
	<i>Percent</i>	<i>Percent</i>	<i>Percent</i>	<i>Percent</i>
Jan	2.9	3.4	22.9	24.1
Feb	5.0	5.1	21.4	22.4
Mar	3.7	4.2	22.1	23.1
Apr	2.2	2.0	22.5	23.1
May	4.0	5.1	22.3	20.9
Jun	5.8		20.5	
Jul	4.8		21.9	
Aug	4.3		21.8	
Sep	4.6		22.6	
Oct	5.7		22.5	
Nov	4.0		23.2	
Dec	2.9		25.8	

¹ As of first of month.

**All Layers: United States
Percent Molt Completed, 1998 - 2001
First of Month**



1/ Previous year

**Forced Molt: Percent of All Layers by State
and United States, May 2000-01 ¹**

State	Percent Being Molted		Percent with Molt Completed	
	2000	2001	2000	2001
	<i>Percent</i>	<i>Percent</i>	<i>Percent</i>	<i>Percent</i>
AL	2.5	0.5	10.5	7.0
AR	2.0	2.5	6.0	11.0
CA	7.5	9.5	38.0	28.5
CO	2.0	3.5	20.0	24.0
CT	2.0	3.5	14.0	9.0
FL	4.0	6.0	36.0	31.0
GA	7.0	6.0	15.5	18.5
HI	7.5	8.0	44.0	45.0
IL	3.0	11.0	13.0	22.5
IN	3.5	6.0	33.5	31.5
IA	1.5	4.5	32.0	26.0
ME	0.0	0.0	0.0	0.0
MD	7.0	12.5	38.0	23.5
MI	10.0	10.5	22.5	27.5
MN	4.5	2.5	30.5	7.0
MS	0.5	4.5	11.5	13.0
MO	2.0	4.5	22.0	15.0
NE	4.5	7.5	26.0	23.0
NY	1.0	0.0	6.5	2.5
NC	0.5	1.5	8.0	10.0
OH	4.0	6.0	13.5	22.0
OK	1.0	0.0	11.0	5.5
OR	7.5	5.0	38.5	33.5
PA	5.0	2.5	19.5	17.5
SC	5.0	10.0	33.0	22.0
SD	2.0	6.0	27.0	27.0
TX	4.5	3.5	19.0	24.0
VA	2.5	5.5	18.5	13.0
WA	5.5	5.5	43.0	40.5
WI	4.5	10.0	24.5	25.5
30 Sts	4.0	5.1	22.4	20.8
Oth Sts ²	4.2	6.0	20.1	21.7
US	4.0	5.1	22.3	20.9

¹ As of first of month.

² Estimates for individual States are not available.

**Hatchery Production: Eggs in Incubators, Chicks Hatched,
and Placements by Type, United States, April-May 2000-01**

Item	2000	2001	2001 as % of 2000
	<i>1,000</i>	<i>1,000</i>	<i>Percent</i>
Egg-Type			
Eggs in Incubators on May 1	36,562	37,009	101
Chicks Hatched During Apr	36,649	41,691	114
Chicks Hatched Jan thru Apr	144,357	157,974	109
Pullets Hatched During Apr for Intended Placements in Hatchery Supply Flocks	309	293	95
7-18 Month Earlier ¹	2,981	3,245	109
Broiler-Type			
Eggs in Incubators on May 1	639,310	635,189	99
Chicks Hatched During Apr	746,830	745,304	100
Chicks Hatched Jan thru Apr	2,961,139	2,913,141	98
Pullets Hatched During Apr for Intended Placements in Hatchery Supply Flocks	6,764	6,398	95
7-15 Months Earlier ²	64,663	62,267	96

¹ 2001 includes pullet chicks hatched Oct 1999 through Sep 2000.

² 2001 includes pullet chicks hatched Jan 2000 through Sep 2000.

**Egg-Type Eggs in Incubators: By Region and United States,
May 1, 2000-01**

Geographic Division	2000	2001	2001 as % of 2000
	<i>1,000</i>	<i>1,000</i>	<i>Percent</i>
North Atlantic	6,213	6,004	97
E North Central	7,744	9,299	120
W North Central	8,287	6,967	84
South Atlantic	4,111	3,543	86
South Central	5,473	5,472	100
West	4,734	5,724	121
US	36,562	37,009	101

Regional Listing:

North Atlantic = CT, ME, MA, NH, NJ, NY, PA, RI, VT.

E North Central = IL, IN, MI, OH, WI.

W North Central = IA, KS, MN, MO, NE, ND, SD.

South Atlantic = DE, FL, GA, MD, NC, SC, VA, WV.

South Central = AL, AR, KY, LA, MS, OK, TN, TX.

West = AK, AZ, CA, CO, HI, ID, MT, NM, NV, OR, UT, WA, WY.

**Egg-Type Chicks Hatched: By State and United States,
April 2000-01**

State	April			Jan-Apr		
	2000	2001	2001 as % of 2000	2000	2001	2001 as % of 2000
	<i>1,000</i>	<i>1,000</i>	<i>Percent</i>	<i>1,000</i>	<i>1,000</i>	<i>Percent</i>
AR	848	817	96	2,805	3,306	118
FL	966	831	86	4,058	3,768	93
GA	1,708	2,122	124	7,830	8,386	107
IN	5,810	7,025	121	24,192	28,800	119
IA	5,350	5,890	110	20,675	22,016	106
KS	417	313	75	1,131	1,120	99
MN	1,801	1,519	84	7,238	6,302	87
MO	388	388	100	1,400	1,400	100
PA	5,148	5,349	104	21,000	21,886	104
Oth Sts ¹	14,213	17,437	123	54,028	60,990	113
US	36,649	41,691	114	144,357	157,974	109

¹ Not published separately to avoid disclosing data for individual operations.

Egg-Type Chicks Hatched: By Month, United States, 1999-01

Month	By Months				Cumulative			
	1999	2000	2001	2001 as % of 2000	1999	2000	2001	2001 as % of 2000
	<i>1,000</i>	<i>1,000</i>	<i>1,000</i>	<i>Percent</i>	<i>1,000</i>	<i>1,000</i>	<i>1,000</i>	<i>Percent</i>
Jan	35,242	34,178	37,976	111	35,242	34,178	37,976	111
Feb	36,367	34,656	38,198	110	71,609	68,834	76,174	111
Mar	41,172	38,874	40,109	103	112,781	107,708	116,283	108
Apr	42,285	36,649	41,691	114	155,066	144,357	157,974	109
May	40,726	41,182			195,792	185,539		
Jun	41,439	37,265			237,231	222,804		
Jul	34,275	33,237			271,506	256,041		
Aug	35,518	34,324			307,024	290,365		
Sep	39,287	36,316			346,311	326,681		
Oct	39,044	36,077			385,355	362,758		
Nov	32,802	32,290			418,157	395,048		
Dec	33,564	34,690			451,721	429,738		

**Intended Placements: Egg-Type Pullet Chicks for Hatchery Supply
Flocks by Month and Total, United States, 1999-01 ¹**

Month	Pullet Chicks Hatched			2001 as % of 2000	Cumulative Potential Placements Relative to Current Supply Flocks 7-18 Months Earlier ²		
	1999	2000	2001		1999	2000	2001
	<i>1,000</i>	<i>1,000</i>	<i>1,000</i>	<i>Percent</i>	<i>1,000</i>	<i>1,000</i>	<i>1,000</i>
Jan	166	212	322	152	3,029	3,012	3,117
Feb	267	251	302	120	3,120	2,945	3,238
Mar	257	286	372	130	3,020	3,078	3,195
Apr	287	309	293	95	2,942	2,981	3,245
May	283	343			3,044	2,903	3,248
Jun	187	223			3,132	2,948	3,363
Jul	231	352			3,108	2,940	3,512
Aug	318	275			3,085	2,986	3,622
Sep	227	277			3,102	2,970	3,673
Oct	280	283			3,134	2,999	3,759
Nov	262	377			3,088	3,021	3,743
Dec	175	324			3,179	3,081	
Total	2,940	3,512					

¹ Reported by leading breeders. Coverage may not be 100 percent. Includes expected pullet chicks from eggs sold during the preceding month at the rate of 125 pullet chicks per 30 dozen case of eggs.

² For April 2001, includes breeder pullet chicks hatched Oct 1999 through Sep 2000. The 7-18 months represent the first laying cycle. Molting and additional laying cycles will increase the cumulative potential placements.

**Broiler-Type Eggs in Incubators: By Region
and United States, May 1, 2000-01**

Geographic Division	2000	2001	2001 as % of 2000
	<i>1,000</i>	<i>1,000</i>	<i>Percent</i>
North Atlantic	11,655	11,972	103
E North Central	7,861	7,484	95
W North Central	21,254	22,733	107
South Atlantic	241,389	235,638	98
South Central	331,574	333,285	101
West	25,577	24,077	94
US	639,310	635,189	99

**Broiler-Type Chicks Hatched: By State
and United States, April 2000-01**

State	April			Jan-Apr		
	2000	2001	2001 as % of 2000	2000	2001	2001 as % of 2000
	<i>1,000</i>	<i>1,000</i>	<i>Percent</i>	<i>1,000</i>	<i>1,000</i>	<i>Percent</i>
AL	102,452	102,831	100	406,744	400,268	98
AR	106,328	106,071	100	430,744	416,347	97
DE	14,905	12,711	85	60,627	54,570	90
FL	9,843	9,204	94	38,003	35,812	94
GA	111,151	111,296	100	440,914	435,817	99
MD	31,529	30,944	98	121,204	119,388	99
MS	65,846	67,230	102	257,286	262,112	102
NC	66,318	63,704	96	259,283	252,491	97
PA	12,880	12,886	100	50,998	50,328	99
SC	16,665	16,959	102	66,727	66,109	99
TX	52,323	53,070	101	205,944	208,293	101
VA	24,092	24,559	102	93,850	94,436	101
CA TN & WV	41,466	40,253	97	159,143	158,800	100
15 Sts ¹	655,798	651,718	99	2,591,467	2,554,771	99
Oth Sts ²	91,032	93,586	103	369,672	358,370	97
US	746,830	745,304	100	2,961,139	2,913,141	98

¹ States in the weekly hatchery production estimating program.

² Not published separately to avoid disclosing data for individual operations.

Broiler-Type Chicks Hatched: By Month, United States, 1999-01

Month	By Months				Cumulative			
	1999	2000	2001	2001 as % of 2000	1999	2000	2001	2001 as % of 2000
	<i>1,000</i>	<i>1,000</i>	<i>1,000</i>	<i>Percent</i>	<i>1,000</i>	<i>1,000</i>	<i>1,000</i>	<i>Percent</i>
Jan	735,768	751,599	733,889	98	735,768	751,599	733,889	98
Feb	662,604	703,466	670,498	95	1,398,372	1,455,065	1,404,387	97
Mar	755,804	759,244	763,450	101	2,154,176	2,214,309	2,167,837	98
Apr	734,734	746,830	745,304	100	2,888,910	2,961,139	2,913,141	98
May	766,422	774,983			3,655,332	3,736,122		
Jun	744,372	747,327			4,399,704	4,483,449		
Jul	751,627	740,188			5,151,331	5,223,637		
Aug	741,716	740,890			5,893,047	5,964,527		
Sep	700,016	702,625			6,593,063	6,667,152		
Oct	697,428	711,278			7,290,491	7,378,430		
Nov	676,762	675,038			7,967,253	8,053,468		
Dec	748,170	738,664			8,715,423	8,792,132		

**Intended Placements: Broiler-Type Pullet Chicks for Hatchery
Supply Flocks by Month and Total, 1999-01 ¹**

Month	Pullet Chicks Hatched			2001 as % of 2000	Cumulative Potential Placements Relative to Current Supply Flocks 7-15 Months Earlier ²		
	1999	2000	2001		1999	2000	2001
	<i>1,000</i>	<i>1,000</i>	<i>1,000</i>	<i>Percent</i>	<i>1,000</i>	<i>1,000</i>	<i>1,000</i>
US Place- ments							
Jan	7,059	6,861	6,685	97	59,403	64,139	63,304
Feb	6,882	7,001	6,748	96	59,937	64,344	62,493
Mar	7,284	7,310	6,752	92	60,699	64,697	62,797
Apr	7,038	6,764	6,398	95	61,775	64,663	62,267
May	7,736	7,435			61,893	64,725	62,100
Jun	7,041	6,829			62,877	64,827	62,204
Jul	7,088	6,310			63,005	64,542	61,323
Aug	7,665	7,288			63,377	64,365	61,244
Sep	6,870	6,469			63,197	63,630	60,557
Oct	7,121	6,694			63,549	63,899	60,480
Nov	6,984	7,105			63,799	63,575	60,568
Dec	6,999	6,429			64,426	63,345	
Annual Total	85,767	82,495					
Total Place- ments ³							
Jan	8,679	8,069	7,615	94			
Feb	8,473	8,302	8,275	100			
Mar	8,863	8,798	8,325	95			
Apr	8,572	8,522	7,915	93			
May	9,463	8,917					
Jun	8,333	8,201					
Jul	8,342	7,621					
Aug	8,983	8,657					
Sep	8,044	8,042					
Oct	8,223	8,260					
Nov	8,220	8,702					
Dec	8,305	7,614					
Annual Total	102,500	99,705					

¹ Reported by leading breeders. Coverage may not be 100 percent. Includes expected pullet chicks from eggs sold during the preceding month at the rate of 125 pullet chicks per 30 dozen case of eggs.

² For Apr 2001, includes breeder pullet chicks hatched Jan 2000 through Sep 2000.

³ U.S. production of intended placements worldwide.

Procedures and Reliability

Data Sources: Primary data for the "**Chickens and Eggs**" report are from weekly and/or monthly questionnaires sent to producers. An attempt is made to collect information for layer and egg estimates from each known contractor and independent producer who has over 30,000 table egg layers. Coverage for operations with less than 30,000 table egg layers are estimated each month based on data reported in December. Approximately 900 contractors, independent egg producers, and started pullet operations are contacted each month. All known hatcheries, approximately 330, are contacted for information on a weekly and/or monthly basis.

Revisions: The previous month's estimates are subject to revision if late reports or corrected data indicates a different level. Additionally, revisions needed after the monthly report will be made at the end of the marketing year and published in the annual summaries of "**Chickens and Eggs Summary**" and "**Hatchery Production**".

Procedures and Reliability: Operations are mailed a questionnaire and given adequate time to respond by mail. Those that do not respond are phoned. Great care is exercised to ensure that all operations are accounted for during each survey period. However, there are usually missing reports that must be accounted for in the estimates.

Sound statistical methodology is employed to derive estimates from the reported data. All data are checked for unusual values. All operations' data are compared to their own past operating profiles and also to trends from other operations. Data for missing operations are estimated based on similar operations or historical data. Survey data are subject to non-sampling errors such as omissions and mistakes in reporting and in processing. While these errors cannot be measured directly, they are minimized by reviewing all data for consistency and reasonableness.

Egg-type chicks hatched are comprised of all chicks of egg-type domesticated breeds including males and chicks destined for hatchery supply flocks and research purposes. The relationship of chicks hatched to chicken inventory and poultry marketings is carefully monitored. The disposition of egg-type chicks hatched prior to placement into the laying flock can vary significantly, which can make comparisons to changes in layer inventory inconsistent over time.

Intended placement data reported by leading breeders include pullet chicks expected from eggs sold the preceding month. The breeders in this report account for a large percentage of replacement pullets for hatchery supply flocks. Production of replacement pullets by these breeders indicates the number of pullets available to hatchery egg supply flocks several months before the pullets will actually move into the flocks. Beginning with the January 1996 publication the broiler-type cumulative potential placements went from 7-14 months earlier to 7-15 months earlier. The egg-type cumulative potential placements of 7-18 months represent the first laying cycle. Molting and additional laying cycles will increase the cumulative potential placements of egg-type hatching flocks.

The next "Chickens and Eggs" report will be released at 3 p.m. ET on June 22, 2001.

The United States Department of Agriculture (USDA) prohibits discrimination in all its programs on the basis of race, color, national origin, gender, religion, age, disability, political beliefs, sexual orientation, and marital or family status. (Not all prohibited bases apply to all programs.) Persons with disabilities who require alternative means for communication of program information (braille, large print, audiotape, etc.) should contact the USDA's TARGET Center at 202-720-2600 (voice and TDD).

To file a complaint of discrimination, write USDA, Director, Office of Civil Rights, Room 326-W, Whitten Building, 1400 Independence Avenue, SW, Washington, D.C., 20250-9410, or call 202-720-5964 (voice or TDD). USDA is an equal opportunity provider and employer.

ACCESS TO REPORTS!!

For your convenience, there are several ways to obtain NASS reports, data products, and services:

INTERNET ACCESS

All NASS reports are available free of charge on the worldwide Internet. For access, connect to the Internet and go to the NASS Home Page at: <http://www.usda.gov/nass/>. Select "Today's Reports" or Publications and then Reports by Calendar or Publications and then Search, by Title or Subject.

E-MAIL SUBSCRIPTION

There are two options for subscribing via e-mail. All NASS reports are available by subscription free of charge direct to your e-mail address. 1) Starting with the NASS Home Page at <http://www.usda.gov/nass/>, click on **Publications**, then click on the **Subscribe by E-mail** button which takes you to the page describing e-mail delivery of reports. Finally, click on **Go to the Subscription Page** and follow the instructions. 2) If you do NOT have Internet access, send an e-mail message to: usda-reports@usda.mannlib.cornell.edu. In the body of the message type the word: **list**.

AUTOFAX ACCESS

NASSFax service is available for some reports from your fax machine. Please call 202-720-2000, using the handset attached to your fax. Respond to the voice prompts. Document 0411 is a list of available reports.

PRINTED REPORTS OR DATA PRODUCTS

CALL OUR TOLL-FREE ORDER DESK: 800-999-6779 (U.S. and Canada)
Other areas, please call 703-834-0125 FAX: 703-834-0110
(Visa, MasterCard, check, or money order acceptable for payment.)

ASSISTANCE

For **assistance** with general agricultural statistics or further information about NASS or its products or services, contact the **Agricultural Statistics Hotline** at **800-727-9540**, 7:30 a.m. to 4:00 p.m. ET, or e-mail: nass@nass.usda.gov.