

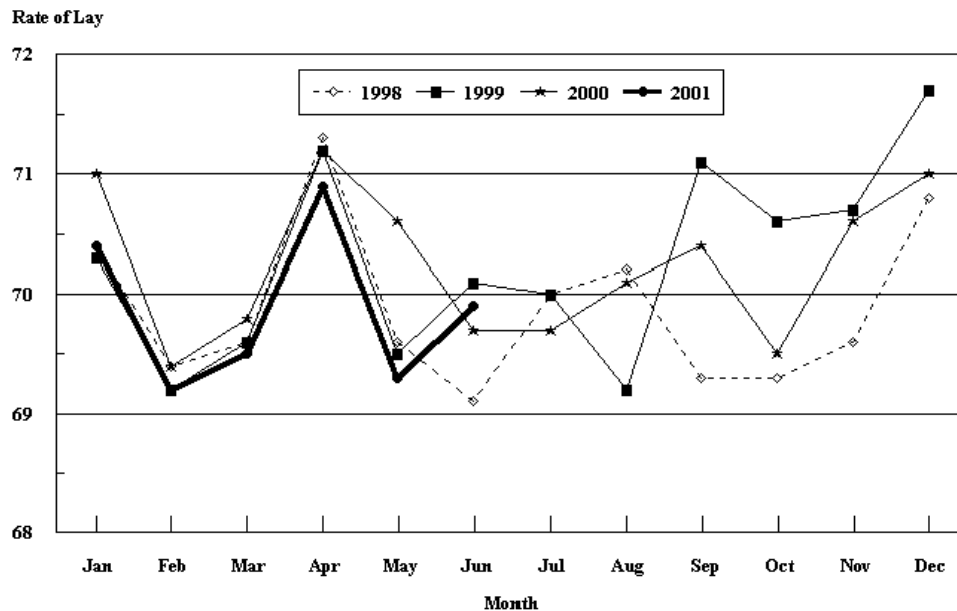
Released June 22, 2001, by the National Agricultural Statistics Service (NASS), Agricultural Statistics Board, U.S. Department of Agriculture. For information on "Chickens and Eggs" call Tom Kruchten at (202) 690-4870. For information on Hatch call Jody Roberts at (202) 690-8632, office hours 7:30 a.m. to 4:00 p.m. ET.

May Egg Production Up 2 Percent

U.S. egg production totaled 7.23 billion during May 2001, up 2 percent from last year. Production included 6.11 billion table eggs and 1.13 billion hatching eggs, of which 1.06 billion were broiler-type and 70.0 million were egg-type. The total number of layers during May 2001 averaged 335 million, up 3 percent from the total average number of layers during May 2000. May egg production per 100 layers was 2,160 eggs, down 1 percent from 2,177 eggs in May 2000.

May 2001 contained 23 weekdays, one holiday and four Saturdays, equal to May 2000.

All Layers: 1st of Month Rate of Lay United States, 1998 - 2001 Eggs Per 100 Layers



All layers in the U.S. on June 1, 2001, totaled 333 million, up 2 percent from a year ago. The 333 million layers consisted of 273 million layers producing table or commercial type eggs, 56.8 million layers producing broiler-type hatching eggs, and 2.95 million layers producing egg-type hatching eggs. Rate of lay per day on June 1, 2001, averaged 69.9 eggs per 100 layers, up slightly from the 69.7 eggs a year ago.

Laying flocks in the 30 major egg producing States produced 6.78 billion eggs during May 2001, up 2 percent from May 2000. The average number of layers during May, at 314 million, was up 3 percent from a year earlier.

Individual State estimates are available for the 30 major egg producing States. These States are listed on page 8 of this release and account for approximately 94 percent of the total U.S. egg production. Production for the other States are grouped into an "Other States" category and combined with the 30 States published individually to obtain a U.S. estimate. Individual State estimates for "Other States" are available annually in the "**Chickens and Eggs Summary**" report.

Egg-Type Chicks Hatched Up 3 Percent

Egg-type chicks **hatched** during May totaled 42.6 million, up 3 percent from May 2000. **Eggs in incubators** totaled 37.7 million on June 1, 2001, up 14 percent from a year ago.

Domestic placements of **egg-type pullet chicks for future hatchery supply flocks** by leading breeders totaled 293,000 during May 2001, down 15 percent from May 2000.

Broiler Hatch Up Slightly

The May 2001 **hatch** of broiler-type chicks, at 776 million, was up slightly from May of the previous year. There were 644 million **eggs in incubators** on June 1, 2001, up 1 percent from a year earlier.

Leading breeders placed 7.12 million **broiler-type pullet chicks for future domestic hatchery supply flocks** during May 2001, down 4 percent from May 2000.

**All Layers: Average Number on Hand During the Month,
United States, 1998-01**

Month	1998	1999	2000	2001
	<i>1,000 Layers</i>	<i>1,000 Layers</i>	<i>1,000 Layers</i>	<i>1,000 Layers</i>
Dec ¹	311,898	321,972	328,828	331,962
Jan	311,906	322,356	328,557	333,283
Feb	313,285	322,827	329,843	335,533
Mar	314,141	322,782	330,862	336,594
Apr	311,957	321,539	329,223	336,763
May	309,655	320,510	326,326	334,728
Jun	309,206	320,441	324,957	
Jul	308,967	319,819	325,563	
Aug	309,291	320,188	325,753	
Sep	311,358	322,409	326,237	
Oct	315,222	325,287	328,178	
Nov	319,625	328,268	330,678	

¹ December preceding year.

**Eggs: Production During the Month by Type,
United States, 2000-01**

Month	Total Eggs		Table Eggs		Hatching Eggs	
	2000	2001	2000	2001	2000	2001
	<i>Million Eggs</i>	<i>Million Eggs</i>	<i>Million Eggs</i>	<i>Million Eggs</i>	<i>Million Eggs</i>	<i>Million Eggs</i>
Dec ¹	7,279	7,279	6,198	6,200	1,081	1,079
Jan	7,157	7,217	6,070	6,119	1,087	1,098
Feb	6,648	6,519	5,625	5,512	1,023	1,007
Mar	7,234	7,331	6,110	6,219	1,124	1,112
Apr	7,013	7,090	5,911	6,009	1,102	1,081
May	7,104	7,231	5,970	6,105	1,134	1,126
Jun	6,801		5,722		1,079	
Jul	7,061		5,952		1,109	
Aug	7,104		6,015		1,089	
Sep	6,854		5,820		1,034	
Oct	7,130		6,063		1,067	
Nov	7,027		5,989		1,038	
During Year	84,412	42,667	71,445	36,164	12,967	6,503

¹ December preceding year.

**Layers and Eggs: Layers on Hand and Eggs Produced by Type,
and Forced Molt, United States, April-May 2000-01**

Item	Unit	2000	2001	2001 as % of 2000
Layers During Apr	1,000			
All Layers		329,223	336,763	102
Table Egg Type		268,708	277,231	103
Hatching Egg Type		60,515	59,532	98
Broiler-Type Hatching		57,643	56,650	98
Egg-Type Hatching		2,872	2,882	100
Eggs per 100 Layers During Apr	Number			
All Layers		2,130	2,105	99
Table Egg Type		2,200	2,168	99
Hatching Egg Type		1,821	1,816	100
Broiler-Type Hatching		1,797	1,792	100
Egg-Type Hatching		2,298	2,290	100
Eggs Produced During Apr	Million			
All Layers		7,013	7,090	101
Table Egg Type		5,911	6,009	102
Hatching Egg Type		1,102	1,081	98
Broiler-Type Hatching		1,036	1,015	98
Egg-Type Hatching		66	66	100
Layers on May 1	1,000			
All Layers		327,597	336,379	103
Table Egg Type		266,748	276,513	104
Hatching Egg Type		60,849	59,866	98
Broiler-Type Hatching		57,934	56,905	98
Egg-Type Hatching		2,915	2,961	102
Eggs per 100 Layers on May 1	Number			
All Layers		70.6	69.3	98
Table Egg Type		73.0	71.2	98
Hatching Egg Type		60.3	60.5	100
Broiler-Type Hatching		59.6	59.6	100
Egg-Type Hatching		74.8	76.8	103
Forced Molt Layers on May 1	Percent			
Percent Being Molted		4.0	5.1	128
Percent with Molt Completed		22.3	20.9	94
Layers Sold for Slaughter During Apr	1,000	16,216	15,175	94
Layers Rendered, Died, Destroyed, Composted or Disappeared For Any Reason During Apr	1,000	1,790	4,818	269
Pullets Less Than 20 Weeks of Age, May 1	1,000	97,959	97,487	100
Pullets Added During Apr ¹	1,000	22,172	23,056	104

¹ Pullet chicks one day old added to pullet flocks.

**Layers and Eggs: Layers on Hand and Eggs Produced by Type,
and Forced Molt, United States, May-June 2000-01**

Item	Unit	2000 ¹	2001	2001 as % of 2000
Layers During May	1,000			
All Layers		326,326	334,728	103
Table Egg Type		266,182	274,888	103
Hatching Egg Type		60,144	59,840	99
Broiler-Type Hatching		57,266	56,881	99
Egg-Type Hatching		2,878	2,959	103
Eggs per 100 Layers During May	Number			
All Layers		2,177	2,160	99
Table Egg Type		2,243	2,221	99
Hatching Egg Type		1,885	1,882	100
Broiler-Type Hatching		1,861	1,857	100
Egg-Type Hatching		2,363	2,366	100
Eggs Produced During May	Million			
All Layers		7,104	7,231	102
Table Egg Type		5,970	6,105	102
Hatching Egg Type		1,134	1,126	99
Broiler-Type Hatching		1,066	1,056	99
Egg-Type Hatching		68	70	103
Layers on Jun 1	1,000			
All Layers		325,012	333,035	102
Table Egg Type		265,596	273,243	103
Hatching Egg Type		59,416	59,792	101
Broiler-Type Hatching		56,585	56,842	100
Egg-Type Hatching		2,831	2,950	104
Eggs per 100 Layers on Jun 1	Number			
All Layers		69.7	69.9	100
Table Egg Type		71.7	71.9	100
Hatching Egg Type		60.9	60.4	99
Broiler-Type Hatching		60.1	59.6	99
Egg-Type Hatching		76.7	76.2	99
Forced Molt Layers, Jun 1	Percent			
Percent Being Molted		5.8	4.6	79
Percent with Molt Completed		20.5	23.3	114
Layers Sold for Slaughter During May	1,000	18,522	17,770	96
Layers Rendered, Died, Destroyed, Composted or Disappeared For Any Reason During May	1,000	5,155	5,807	113
Pullets Less Than 20 Weeks of Age, Jun 1	1,000	99,178	100,923	102
Pullets Added During May ²	1,000	24,793	26,157	106

¹ Revised.

² Pullet chicks one day old added to pullet flocks.

**Layers and Eggs: Layers on Hand and Eggs Produced by Type, and Forced
Molt, 30 Selected States, April-May, 2000-01¹**

Item	Unit	2000	2001	2001 as % of 2000
Layers During Apr	1,000			
All Layers		308,811	315,864	102
Table Egg Type		253,164	261,078	103
Hatching Egg Type		55,647	54,786	98
Broiler-Type Hatching		52,897	52,000	98
Egg-Type Hatching		2,750	2,786	101
Eggs per 100 Layers During Apr	Number			
All Layers		2,128	2,103	99
Table Egg Type		2,197	2,165	99
Hatching Egg Type		1,810	1,811	100
Broiler-Type Hatching		1,785	1,785	100
Egg-Type Hatching		2,291	2,297	100
Eggs Produced During Apr	Million			
All Layers		6,570	6,643	101
Table Egg Type		5,563	5,651	102
Hatching Egg Type		1,007	992	99
Broiler-Type Hatching		944	928	98
Egg-Type Hatching		63	64	102
Layers on May 1	1,000			
All Layers		307,224	315,832	103
Table Egg Type		251,286	260,705	104
Hatching Egg Type		55,938	55,127	99
Broiler-Type Hatching		53,127	52,252	98
Egg-Type Hatching		2,811	2,875	102
Eggs per 100 Layers on May 1	Number			
All Layers		70.6	69.2	98
Table Egg Type		72.9	71.1	98
Hatching Egg Type		60.0	60.3	101
Broiler-Type Hatching		59.2	59.4	100
Egg-Type Hatching		74.3	76.6	103
Forced Molt Layers on May 1	Percent			
Percent Being Molted		4.0	5.1	128
Percent with Molt Completed		22.4	20.8	93
Layers Sold for Slaughter During Apr	1,000	15,425	13,863	90
Layers Rendered, Died, Destroyed, Composted or Disappeared For Any Reason During Apr	1,000	1,781	4,526	254
Pullets Less Than 20 Weeks of Age, May 1	1,000	92,095	91,573	99
Pullets Added During Apr ²	1,000	20,893	22,016	105

¹ The 30 States are listed in the table on page 8.

² Pullet chicks one day old added to pullet flocks.

Layers and Eggs: Layers on Hand and Eggs Produced by Type, and Forced Molt, 30 Selected States, May-June, 2000-01 ¹

Item	Unit	2000 ²	2001	2001 as % of 2000
Layers During May	1,000			
All Layers		306,120	314,086	103
Table Egg Type		250,826	258,982	103
Hatching Egg Type		55,294	55,104	100
Broiler-Type Hatching		52,520	52,230	99
Egg-Type Hatching		2,774	2,874	104
Eggs per 100 Layers During May	1,000			
All Layers		2,175	2,157	99
Table Egg Type		2,241	2,217	99
Hatching Egg Type		1,875	1,875	100
Broiler-Type Hatching		1,851	1,848	100
Egg-Type Hatching		2,343	2,366	101
Eggs Produced During May	Million			
All Layers		6,658	6,775	102
Table Egg Type		5,621	5,742	102
Hatching Egg Type		1,037	1,033	100
Broiler-Type Hatching		972	965	99
Egg-Type Hatching		65	68	105
Layers on Jun 1	1,000			
All Layers		304,985	312,309	102
Table Egg Type		250,352	257,246	103
Hatching Egg Type		54,633	55,063	101
Broiler-Type Hatching		51,904	52,196	101
Egg-Type Hatching		2,729	2,867	105
Eggs per 100 Layers on Jun 1	Number			
All Layers		69.6	69.8	100
Table Egg Type		71.6	71.8	100
Hatching Egg Type		60.7	60.2	99
Broiler-Type Hatching		59.8	59.3	99
Egg-Type Hatching		76.4	76.0	99
Forced Molt Layers, Jun 1	Percent			
Percent Being Molted		5.8	4.6	79
Percent with Molt Completed		20.3	23.3	115
Layers Sold for Slaughter During May	1,000	17,564	16,726	95
Layers Rendered, Died, Destroyed, Composted or Disappeared For Any Reason During May	1,000	4,807	5,537	115
Pullets Less Than 20 Weeks of Age, Jun 1	1,000	92,980	95,273	102
Pullets Added During May ³	1,000	23,449	24,910	106

¹ The 30 States are listed in the table on page 8.

² Revised.

³ Pullet chicks one day old added to pullet flocks.

**Layers and Eggs: Layers on Hand and Eggs Produced by State
and United States, During April 2000-01**

State	Table Egg Layers in Flocks 30,000 and Above		All Layers ¹		Eggs per 100 for All Layers ¹	
	2000	2001	2000	2001	2000	2001
	<i>1,000</i>	<i>1,000</i>	<i>1,000</i>	<i>1,000</i>	<i>Number</i>	<i>Number</i>
AL	3,019	2,873	10,531	10,344	1,890	1,895
AR	4,956	4,605	15,654	14,637	1,885	1,954
CA	23,388	22,854	23,973	23,405	2,152	2,098
CO	3,468	2,952	3,970	3,462	2,166	2,137
CT	2,927	3,103	3,061	3,190	2,221	2,320
FL	9,878	10,046	10,565	10,795	2,139	2,057
GA	11,582	11,892	20,946	21,503	2,077	2,014
HI	586	572	615	602	2,033	1,894
IL	3,383	3,138	3,654	3,383	2,189	2,158
IN	22,383	22,396	23,071	23,115	2,224	2,146
IA	26,851	31,662	27,685	32,483	2,236	2,180
ME	4,152	4,158	4,240	4,221	2,311	2,220
MD	2,937	2,884	3,335	3,221	2,129	2,328
MI	6,037	6,518	6,321	6,802	2,139	2,120
MN	11,715	11,278	12,446	11,996	2,105	2,067
MS	1,861	1,837	7,010	6,764	1,954	1,892
MO	4,584	5,327	5,897	6,619	2,137	2,160
NE	11,592	11,527	11,742	11,627	2,129	2,142
NY	3,772	3,750	3,989	4,085	2,306	2,203
NC	3,149	3,348	11,042	11,233	1,829	1,843
OH	30,963	29,604	31,633	30,242	2,165	2,186
OK	1,957	1,879	4,127	4,052	1,914	1,925
OR	2,848	2,843	3,023	3,025	2,183	2,281
PA	21,428	23,460	23,116	25,006	2,241	2,227
SC	4,019	4,486	4,986	5,450	2,006	2,037
SD	1,932	2,169	2,192	2,369	2,144	1,984
TX	12,960	14,662	17,172	19,074	2,137	2,102
VA	1,416	1,549	3,502	3,606	2,027	1,858
WA	4,706	4,949	4,826	5,028	2,267	2,251
WI	3,830	3,922	4,487	4,525	2,318	2,144
30 Sts	248,279	256,243	308,811	315,864	2,128	2,103
Oth Sts ²	14,515	14,960	20,412	20,899	2,170	2,144
US	262,794	271,203	329,223	336,763	2,130	2,105

¹ Includes all layers and eggs produced in both table egg and hatching egg flocks regardless of size.

² Estimates for individual States are not available.

**Layers and Eggs: Layers on Hand and Eggs Produced by State
and United States, During May 2000-01**

State	Table Egg Layers in Flocks 30,000 and Above		All Layers ¹		Eggs per 100 for All Layers ¹	
	2000	2001	2000	2001	2000	2001
	<i>1,000</i>	<i>1,000</i>	<i>1,000</i>	<i>1,000</i>	<i>Number</i>	<i>Number</i>
AL	2,789	2,824	10,302	10,341	1,922	1,963
AR	5,084	4,733	15,496	14,938	1,968	1,961
CA	23,155	23,049	23,729	23,637	2,170	2,141
CO	3,355	2,705	3,856	3,219	2,230	2,330
CT	2,917	3,112	3,051	3,199	2,294	2,282
FL	9,630	9,688	10,314	10,450	2,104	2,124
GA	11,193	11,185	20,408	20,757	2,058	1,995
HI	579	565	607	595	2,076	1,899
IL	3,257	3,050	3,532	3,289	2,237	2,159
IN	22,270	22,194	22,947	22,921	2,284	2,212
IA	27,004	31,479	27,847	32,328	2,341	2,252
ME	4,064	4,290	4,127	4,353	2,416	2,313
MD	2,893	2,862	3,295	3,225	2,185	2,419
MI	5,855	6,371	6,136	6,643	2,122	2,141
MN	11,740	11,193	12,473	11,926	2,237	2,188
MS	1,835	1,804	6,987	6,777	1,975	1,933
MO	4,675	5,144	5,958	6,469	2,216	2,257
NE	11,717	11,506	11,867	11,606	2,107	2,214
NY	3,687	3,799	3,906	4,128	2,355	2,326
NC	3,231	3,163	11,141	11,062	1,885	1,926
OH	30,698	29,768	31,389	30,421	2,227	2,255
OK	1,956	1,888	4,118	4,050	1,991	1,951
OR	2,762	2,809	2,932	2,991	2,285	2,307
PA	20,848	23,334	22,552	24,870	2,306	2,252
SC	4,037	4,700	5,031	5,699	2,067	2,071
SD	1,930	2,080	2,190	2,280	2,329	2,018
TX	12,888	14,563	17,208	18,903	2,144	2,158
VA	1,363	1,533	3,424	3,561	2,074	1,966
WA	4,826	4,877	4,946	4,956	2,313	2,304
WI	3,703	3,891	4,351	4,492	2,275	2,159
30 Sts	245,941	254,159	306,120	314,086	2,175	2,157
Oth Sts ²	14,326	14,713	20,206	20,642	2,207	2,214
US	260,267	268,872	326,326	334,728	2,177	2,160

¹ Includes all layers and eggs produced in both table egg and hatching egg flocks regardless of size.

² Estimates for individual States are not available.

**Egg Production: By Type, State, and United States,
April 2000-01**

State	Total Production		Table Eggs ¹		Hatching Eggs ¹	
	2000	2001	2000	2001	2000	2001
	<i>Million Eggs</i>	<i>Million Eggs</i>	<i>Million Eggs</i>	<i>Million Eggs</i>	<i>Million Eggs</i>	<i>Million Eggs</i>
AL	199	196	68	62	131	134
AR	295	286	107	103	188	183
CA	516	491				
CO	86	74				
CT	68	74				
FL	226	222	214	208	12	14
GA	435	433	257	257	178	176
HI	12.5	11.4	12.5	11.4	0	0
IL	80	73	76	70	4	3
IN	513	496	500	484	13	12
IA	619	708				
ME	98	94				
MD	71	75	65	70	6	5
MI	135	144				
MN	262	248	252	239	10	9
MS	137	128	45	41	92	87
MO	126	143				
NE	250	249	250	249	0	0
NY	92	90				
NC	202	207	74	78	128	129
OH	685	661				
OK	79	78	44	44	35	34
OR	66	69	64	67	2	2
PA	518	557	497	537	21	20
SC	100	111	83	93	17	18
SD	47	47	47	47	0	0
TX	367	401				
VA	71	67	33	31	38	36
WA	109	113				
WI	104	97				
30 Sts	6,570	6,643	5,563	5,651	1,007	992
Oth Sts ²	443	448	348	358	95	89
US	7,013	7,090	5,911	6,009	1,102	1,081

¹ Data by type of flock not shown for some States to avoid disclosing individual operations.

² Estimates for individual States are not available.

**Egg Production: By Type, State, and United States,
May 2000-01**

State	Total Production		Table Eggs ¹		Hatching Eggs ¹	
	2000	2001	2000	2001	2000	2001
	<i>Million Eggs</i>	<i>Million Eggs</i>	<i>Million Eggs</i>	<i>Million Eggs</i>	<i>Million Eggs</i>	<i>Million Eggs</i>
AL	198	203	63	64	135	139
AR	305	293	114	106	191	187
CA	515	506				
CO	86	75				
CT	70	73				
FL	217	222	205	208	12	14
GA	420	414	237	233	183	181
HI	12.6	11.3	12.6	11.3	0	0
IL	79	71	74	68	5	3
IN	524	507	511	495	13	12
IA	652	728				
ME	100	101				
MD	72	78	65	71	7	7
MI	130	142				
MN	279	261	269	251	10	10
MS	138	131	44	40	94	91
MO	132	146				
NE	250	257	250	257	0	0
NY	92	96				
NC	210	213	78	75	132	138
OH	699	686				
OK	82	79	46	44	36	35
OR	67	69	66	67	1	2
PA	520	560	497	539	23	21
SC	104	118	86	99	18	19
SD	51	46	51	46	0	0
TX	369	408				
VA	71	70	32	34	39	36
WA	114	114				
WI	99	97				
30 Sts	6,658	6,775	5,621	5,742	1,037	1,033
Oth Sts ²	446	457	349	363	97	93
US	7,104	7,231	5,970	6,105	1,134	1,126

¹ Data by type of flock not shown for some States to avoid disclosing individual operations.

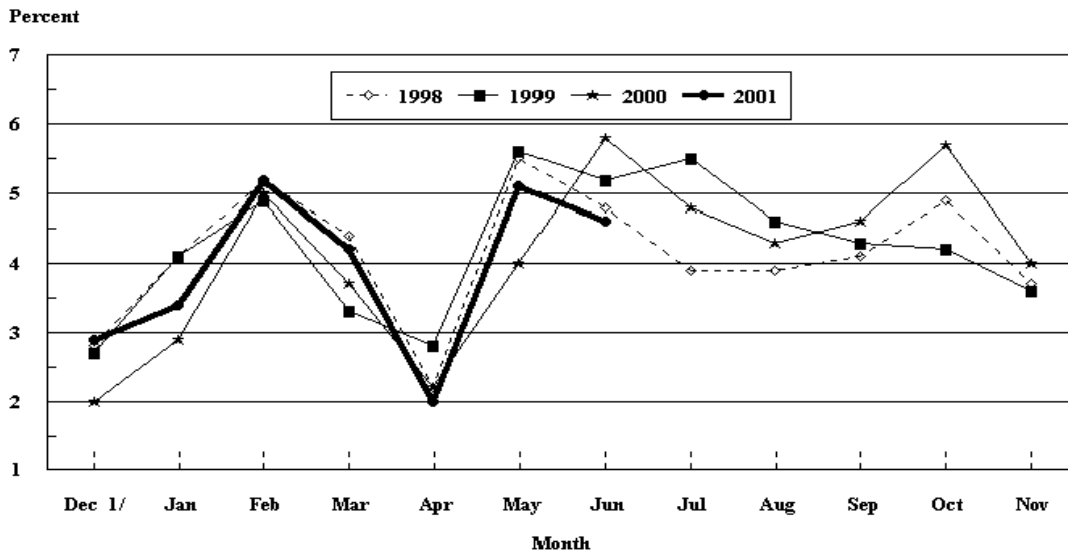
² Estimates for individual States are not available.

**Forced Molt: Percent of All Layers by Month,
United States, 2000-01¹**

Month	Percent Being Molted		Percent with Molt Completed	
	2000	2001	2000	2001
	<i>Percent</i>	<i>Percent</i>	<i>Percent</i>	<i>Percent</i>
Jan	2.9	3.4	22.9	24.1
Feb	5.0	5.1	21.4	22.4
Mar	3.7	4.2	22.1	23.1
Apr	2.2	2.0	22.5	23.1
May	4.0	5.1	22.3	20.9
Jun	5.8	4.6	20.5	23.3
Jul	4.8		21.9	
Aug	4.3		21.8	
Sep	4.6		22.6	
Oct	5.7		22.5	
Nov	4.0		23.2	
Dec	2.9		25.8	

¹ As of first of month.

**All Layers : United States
Percent Being Molted, 1998 - 2001
First of Month**



1/ Previous Year

**Forced Molt: Percent of All Layers by State
and United States, June 2000-01 ¹**

State	Percent Being Molted		Percent with Molt Completed	
	2000	2001	2000	2001
	<i>Percent</i>	<i>Percent</i>	<i>Percent</i>	<i>Percent</i>
AL	5.0	1.0	5.5	6.0
AR	2.5	1.0	6.0	13.0
CA	11.0	7.0	34.0	28.5
CO	3.0	3.0	25.5	27.0
CT	2.0	7.0	11.0	5.5
FL	8.0	6.5	36.0	32.5
GA	9.0	6.0	13.5	16.5
HI	9.5	5.5	49.0	44.0
IL	12.0	13.5	16.5	20.5
IN	3.0	2.5	29.5	35.0
IA	4.5	4.5	24.5	29.5
ME	0.0	0.0	0.0	0.0
MD	10.0	9.5	32.5	22.5
MI	10.0	4.5	19.5	29.5
MN	6.5	7.5	31.0	35.0
MS	5.5	2.0	2.0	11.0
MO	2.5	2.5	21.5	13.5
NE	7.5	4.5	22.0	27.5
NY	2.0	0.0	5.5	2.0
NC	2.0	2.0	8.0	8.5
OH	5.5	5.5	15.0	30.5
OK	1.0	2.5	11.0	5.5
OR	3.0	7.5	36.5	33.0
PA	6.5	7.0	18.5	20.0
SC	7.0	6.5	28.5	20.5
SD	2.0	5.0	27.0	32.5
TX	6.0	1.5	18.0	21.5
VA	0.5	6.0	13.0	7.0
WA	9.0	5.5	42.5	41.0
WI	8.5	4.5	22.5	27.0
30 Sts	5.8	4.6	20.3	23.3
Oth Sts ²	5.2	4.5	22.3	22.1
US	5.8	4.6	20.5	23.3

¹ As of first of month.

² Estimates for individual States are not available.

**Hatchery Production: Eggs in Incubators, Chicks Hatched,
and Placements by Type, United States, May-June 2000-01**

Item	2000	2001	2001 as % of 2000
	<i>1,000</i>	<i>1,000</i>	<i>Percent</i>
Egg-Type			
Eggs in Incubators on Jun 1	33,065	37,667	114
Chicks Hatched During May	41,182	42,579	103
Chicks Hatched Jan thru May	185,539	200,553	108
Pullets Hatched During May for Intended Placements in Hatchery Supply Flocks	343	293	85
7-18 Month Earlier ¹	2,903	3,248	112
Broiler-Type			
Eggs in Incubators on Jun 1	638,442	644,391	101
Chicks Hatched During May	774,983	775,674	100
Chicks Hatched Jan thru May	3,736,122	3,688,815	99
Pullets Hatched During May for Intended Placements in Hatchery Supply Flocks	7,435	7,117	96
7-15 Months Earlier ²	64,725	62,100	96

¹ 2001 includes pullet chicks hatched Nov 1999 through Oct 2000.

² 2001 includes pullet chicks hatched Feb 2000 through Oct 2000.

**Egg-Type Eggs in Incubators: By Region and United States,
June 1, 2000-01**

Geographic Division	2000	2001	2001 as % of 2000
	<i>1,000</i>	<i>1,000</i>	<i>Percent</i>
North Atlantic	5,591	6,612	118
E North Central	7,867	8,875	113
W North Central	7,624	7,741	102
South Atlantic	3,236	3,846	119
South Central	4,110	4,877	119
West	4,637	5,716	123
US	33,065	37,667	114

Regional Listing:

North Atlantic = CT, ME, MA, NH, NJ, NY, PA, RI, VT.

E North Central = IL, IN, MI, OH, WI.

W North Central = IA, KS, MN, MO, NE, ND, SD.

South Atlantic = DE, FL, GA, MD, NC, SC, VA, WV.

South Central = AL, AR, KY, LA, MS, OK, TN, TX.

West = AK, AZ, CA, CO, HI, ID, MT, NM, NV, OR, UT, WA, WY.

**Egg-Type Chicks Hatched: By State and United States,
May 2000-01**

State	May			Jan-May		
	2000	2001	2001 as % of 2000	2000	2001	2001 as % of 2000
	<i>1,000</i>	<i>1,000</i>	<i>Percent</i>	<i>1,000</i>	<i>1,000</i>	<i>Percent</i>
AR	1,240	1,048	85	4,045	4,354	108
FL	1,045	1,046	100	5,103	4,814	94
GA	1,884	2,130	113	9,714	10,516	108
IN	6,124	6,757	110	30,316	35,557	117
IA	6,783	6,278	93	27,458	28,294	103
KS	375	224	60	1,506	1,344	89
MN	1,799	1,680	93	9,037	7,982	88
MO	403	403	100	1,803	1,803	100
PA	5,455	5,684	104	26,455	27,570	104
Oth Sts ¹	16,074	17,329	108	70,102	78,319	112
US	41,182	42,579	103	185,539	200,553	108

¹ Not published separately to avoid disclosing data for individual operations.

Egg-Type Chicks Hatched: By Month, United States, 1999-01

Month	By Months				Cumulative			
	1999	2000	2001	2001 as % of 2000	1999	2000	2001	2001 as % of 2000
	<i>1,000</i>	<i>1,000</i>	<i>1,000</i>	<i>Percent</i>	<i>1,000</i>	<i>1,000</i>	<i>1,000</i>	<i>Percent</i>
Jan	35,242	34,178	37,976	111	35,242	34,178	37,976	111
Feb	36,367	34,656	38,198	110	71,609	68,834	76,174	111
Mar	41,172	38,874	40,109	103	112,781	107,708	116,283	108
Apr	42,285	36,649	41,691	114	155,066	144,357	157,974	109
May	40,726	41,182	42,579	103	195,792	185,539	200,553	108
Jun	41,439	37,265			237,231	222,804		
Jul	34,275	33,237			271,506	256,041		
Aug	35,518	34,324			307,024	290,365		
Sep	39,287	36,316			346,311	326,681		
Oct	39,044	36,077			385,355	362,758		
Nov	32,802	32,290			418,157	395,048		
Dec	33,564	34,690			451,721	429,738		

**Intended Placements: Egg-Type Pullet Chicks for Hatchery Supply
Flocks by Month and Total, United States, 1999-01 ¹**

Month	Pullet Chicks Hatched			2001 as % of 2000	Cumulative Potential Placements Relative to Current Supply Flocks 7-18 Months Earlier ²		
	1999	2000	2001		1999	2000	2001
	<i>1,000</i>	<i>1,000</i>	<i>1,000</i>	<i>Percent</i>	<i>1,000</i>	<i>1,000</i>	<i>1,000</i>
Jan	166	212	322	152	3,029	3,012	3,117
Feb	267	251	302	120	3,120	2,945	3,238
Mar	257	286	372	130	3,020	3,078	3,195
Apr	287	309	293	95	2,942	2,981	3,245
May	283	343	293	85	3,044	2,903	3,248
Jun	187	223			3,132	2,948	3,363
Jul	231	352			3,108	2,940	3,512
Aug	318	275			3,085	2,986	3,622
Sep	227	277			3,102	2,970	3,673
Oct	280	283			3,134	2,999	3,759
Nov	262	377			3,088	3,021	3,743
Dec	175	324			3,179	3,081	3,693
Total	2,940	3,512					

¹ Reported by leading breeders. Coverage may not be 100 percent. Includes expected pullet chicks from eggs sold during the preceding month at the rate of 125 pullet chicks per 30 dozen case of eggs.

² For May 2001, includes breeder pullet chicks hatched Nov 1999 through Oct 2000. The 7-18 months represent the first laying cycle. Molting and additional laying cycles will increase the cumulative potential placements.

**Broiler-Type Eggs in Incubators: By Region
and United States, June 1, 2000-01**

Geographic Division	2000	2001	2001 as % of 2000
	<i>1,000</i>	<i>1,000</i>	<i>Percent</i>
North Atlantic	11,587	12,093	104
E North Central	8,134	7,535	93
W North Central	20,829	21,719	104
South Atlantic	239,918	237,133	99
South Central	332,746	340,574	102
West	25,228	25,337	100
US	638,442	644,391	101

**Broiler-Type Chicks Hatched: By State
and United States, May 2000-01**

State	May			Jan-May		
	2000	2001	2001 as % of 2000	2000	2001	2001 as % of 2000
	<i>1,000</i>	<i>1,000</i>	<i>Percent</i>	<i>1,000</i>	<i>1,000</i>	<i>Percent</i>
AL	105,961	106,183	100	512,705	506,451	99
AR	111,715	110,752	99	542,459	527,099	97
DE	15,578	13,290	85	76,205	67,860	89
FL	10,160	8,735	86	48,163	44,547	92
GA	114,878	116,651	102	555,792	552,468	99
MD	31,476	31,912	101	152,680	151,300	99
MS	67,683	68,455	101	324,969	330,567	102
NC	67,874	65,653	97	327,157	318,144	97
PA	13,226	13,414	101	64,224	63,742	99
SC	16,619	17,523	105	83,346	83,632	100
TX	55,293	56,636	102	261,237	264,929	101
VA	24,922	25,246	101	118,772	119,682	101
CA TN & WV	42,336	41,032	97	201,479	199,832	99
15 Sts ¹	677,721	675,482	100	3,269,188	3,230,253	99
Oth Sts ²	97,262	100,192	103	466,934	458,562	98
US	774,983	775,674	100	3,736,122	3,688,815	99

¹ States in the weekly hatchery production estimating program.

² Not published separately to avoid disclosing data for individual operations.

Broiler-Type Chicks Hatched: By Month, United States, 1999-01

Month	By Months				Cumulative			
	1999	2000	2001	2001 as % of 2000	1999	2000	2001	2001 as % of 2000
	<i>1,000</i>	<i>1,000</i>	<i>1,000</i>	<i>Percent</i>	<i>1,000</i>	<i>1,000</i>	<i>1,000</i>	<i>Percent</i>
Jan	735,768	751,599	733,889	98	735,768	751,599	733,889	98
Feb	662,604	703,466	670,498	95	1,398,372	1,455,065	1,404,387	97
Mar	755,804	759,244	763,450	101	2,154,176	2,214,309	2,167,837	98
Apr	734,734	746,830	745,304	100	2,888,910	2,961,139	2,913,141	98
May	766,422	774,983	775,674	100	3,655,332	3,736,122	3,688,815	99
Jun	744,372	747,327			4,399,704	4,483,449		
Jul	751,627	740,188			5,151,331	5,223,637		
Aug	741,716	740,890			5,893,047	5,964,527		
Sep	700,016	702,625			6,593,063	6,667,152		
Oct	697,428	711,278			7,290,491	7,378,430		
Nov	676,762	675,038			7,967,253	8,053,468		
Dec	748,170	738,664			8,715,423	8,792,132		

**Intended Placements: Broiler-Type Pullet Chicks for Hatchery
Supply Flocks by Month and Total, 1999-01 ¹**

Month	Pullet Chicks Hatched			2001 as % of 2000	Cumulative Potential Placements Relative to Current Supply Flocks 7-15 Months Earlier ²		
	1999	2000	2001		1999	2000	2001
	<i>1,000</i>	<i>1,000</i>	<i>1,000</i>	<i>Percent</i>	<i>1,000</i>	<i>1,000</i>	<i>1,000</i>
US Place- ments							
Jan	7,059	6,861	6,685	97	59,403	64,139	63,304
Feb	6,882	7,001	6,748	96	59,937	64,344	62,493
Mar	7,284	7,310	6,752	92	60,699	64,697	62,797
Apr	7,038	6,764	6,398	95	61,775	64,663	62,267
May	7,736	7,435	7,117	96	61,893	64,725	62,100
Jun	7,041	6,829			62,877	64,827	62,204
Jul	7,088	6,310			63,005	64,542	61,323
Aug	7,665	7,288			63,377	64,365	61,244
Sep	6,870	6,469			63,197	63,630	60,557
Oct	7,121	6,694			63,549	63,899	60,480
Nov	6,984	7,105			63,799	63,575	60,568
Dec	6,999	6,429			64,426	63,345	60,397
Annual Total	85,767	82,495					
Total Place- ments ³							
Jan	8,679	8,069	7,615	94			
Feb	8,473	8,302	8,275	100			
Mar	8,863	8,798	8,325	95			
Apr	8,572	8,522	7,915	93			
May	9,463	8,917	8,647	97			
Jun	8,333	8,201					
Jul	8,342	7,621					
Aug	8,983	8,657					
Sep	8,044	8,042					
Oct	8,223	8,260					
Nov	8,220	8,702					
Dec	8,305	7,614					
Annual Total	102,500	99,705					

¹ Reported by leading breeders. Coverage may not be 100 percent. Includes expected pullet chicks from eggs sold during the preceding month at the rate of 125 pullet chicks per 30 dozen case of eggs.

² For May 2001, includes breeder pullet chicks hatched Feb 2000 through Oct 2000.

³ U.S. production of intended placements worldwide.

Procedures and Reliability

Data Sources: Primary data for the "**Chickens and Eggs**" report are from weekly and/or monthly questionnaires sent to producers. An attempt is made to collect information for layer and egg estimates from each known contractor and independent producer who has over 30,000 table egg layers. Coverage for operations with less than 30,000 table egg layers are estimated each month based on data reported in December. Approximately 900 contractors, independent egg producers, and started pullet operations are contacted each month. All known hatcheries, approximately 330, are contacted for information on a weekly and/or monthly basis.

Revisions: The previous month's estimates are subject to revision if late reports or corrected data indicates a different level. Additionally, revisions needed after the monthly report will be made at the end of the marketing year and published in the annual summaries of "**Chickens and Eggs Summary**" and "**Hatchery Production**".

Procedures and Reliability: Operations are mailed a questionnaire and given adequate time to respond by mail. Those that do not respond are phoned. Great care is exercised to ensure that all operations are accounted for during each survey period. However, there are usually missing reports that must be accounted for in the estimates.

Sound statistical methodology is employed to derive estimates from the reported data. All data are checked for unusual values. All operations' data are compared to their own past operating profiles and also to trends from other operations. Data for missing operations are estimated based on similar operations or historical data. Survey data are subject to non-sampling errors such as omissions and mistakes in reporting and in processing. While these errors cannot be measured directly, they are minimized by reviewing all data for consistency and reasonableness.

Egg-type chicks hatched are comprised of all chicks of egg-type domesticated breeds including males and chicks destined for hatchery supply flocks and research purposes. The relationship of chicks hatched to chicken inventory and poultry marketings is carefully monitored. The disposition of egg-type chicks hatched prior to placement into the laying flock can vary significantly, which can make comparisons to changes in layer inventory inconsistent over time.

Intended placement data reported by leading breeders include pullet chicks expected from eggs sold the preceding month. The breeders in this report account for a large percentage of replacement pullets for hatchery supply flocks. Production of replacement pullets by these breeders indicates the number of pullets available to hatchery egg supply flocks several months before the pullets will actually move into the flocks. Beginning with the January 1996 publication the broiler-type cumulative potential placements went from 7-14 months earlier to 7-15 months earlier. The egg-type cumulative potential placements of 7-18 months represent the first laying cycle. Molting and additional laying cycles will increase the cumulative potential placements of egg-type hatching flocks.

The next "Chickens and Eggs" report will be released at 3 p.m. ET on July 23, 2001.

The United States Department of Agriculture (USDA) prohibits discrimination in all its programs on the basis of race, color, national origin, gender, religion, age, disability, political beliefs, sexual orientation, and marital or family status. (Not all prohibited bases apply to all programs.) Persons with disabilities who require alternative means for communication of program information (braille, large print, audiotope, etc.) should contact the USDA's TARGET Center at 202-720-2600 (voice and TDD).

To file a complaint of discrimination, write USDA, Director, Office of Civil Rights, Room 326-W, Whitten Building, 1400 Independence Avenue, SW, Washington, D.C., 20250-9410, or call 202-720-5964 (voice or TDD). USDA is an equal opportunity provider and employer.

ACCESS TO REPORTS!!

For your convenience, there are several ways to obtain NASS reports, data products, and services:

INTERNET ACCESS

All NASS reports are available free of charge on the worldwide Internet. For access, connect to the Internet and go to the NASS Home Page at: <http://www.usda.gov/nass/>. Select "Today's Reports" or Publications and then Reports by Calendar or Publications and then Search, by Title or Subject.

E-MAIL SUBSCRIPTION

There are two options for subscribing via e-mail. All NASS reports are available by subscription free of charge direct to your e-mail address. 1) Starting with the NASS Home Page at <http://www.usda.gov/nass/>, click on **Publications**, then click on the **Subscribe by E-mail** button which takes you to the page describing e-mail delivery of reports. Finally, click on **Go to the Subscription Page** and follow the instructions. 2) If you do NOT have Internet access, send an e-mail message to: usda-reports@usda.mannlib.cornell.edu. In the body of the message type the word: **list**.

AUTOFAX ACCESS

NASSFax service is available for some reports from your fax machine. Please call 202-720-2000, using the handset attached to your fax. Respond to the voice prompts. Document 0411 is a list of available reports.

PRINTED REPORTS OR DATA PRODUCTS

CALL OUR TOLL-FREE ORDER DESK: 800-999-6779 (U.S. and Canada)
Other areas, please call 703-834-0125 FAX: 703-834-0110
(Visa, MasterCard, check, or money order acceptable for payment.)

ASSISTANCE

For **assistance** with general agricultural statistics or further information about NASS or its products or services, contact the **Agricultural Statistics Hotline** at **800-727-9540**, 7:30 a.m. to 4:00 p.m. ET, or e-mail: nass@nass.usda.gov.