

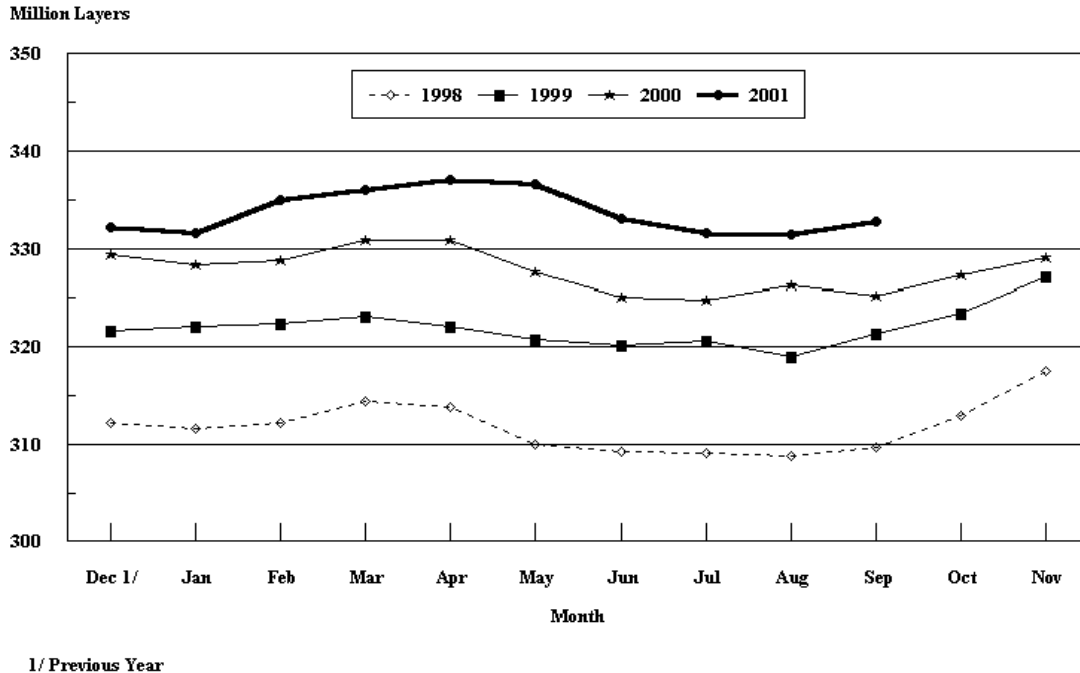
Released September 21, 2001, by the National Agricultural Statistics Service (NASS), Agricultural Statistics Board, U.S. Department of Agriculture. For information on "Chickens and Eggs" call Tom Kruchten at (202) 690-4870. For information on Hatch call Jody Roberts at (202) 690-8632, office hours 7:30 a.m. to 4:00 p.m. ET.

August Egg Production Up 1 Percent

U.S. egg production totaled 7.21 billion during August 2001, up 1 percent from last year. Production included 6.12 billion table eggs and 1.08 billion hatching eggs, of which 1.02 billion were broiler-type and 62.0 million were egg-type. The total number of layers during August 2001 averaged 332 million, up 2 percent from the total average number of layers during August 2000. August egg production per 100 layers was 2,170 eggs, 1 percent below the 2,181 eggs in August 2000.

August 2001 contained 23 weekdays, and four Saturdays, the same as August 2000.

All Layers: 1st of Month United States, 1998 - 2001



All layers in the U.S. on September 1, 2001, totaled 333 million, up 2 percent from a year ago. The 333 million layers consisted of 275 million layers producing table or commercial type eggs, 55.3 million layers producing broiler-type hatching eggs, and 2.70 million layers producing egg-type hatching eggs. Rate of lay per day on September 1, 2001, averaged 70.1 eggs per 100 layers, down slightly from the 70.4 eggs a year ago.

Laying flocks in the 30 major egg producing States produced 6.74 billion eggs during August 2001, up 1 percent from August 2000. The average number of layers during August, at 311 million, was up 2 percent from a year earlier.

Individual State estimates are available for the 30 major egg producing States. These States are listed on page 8 of this release and account for approximately 95 percent of the total U.S. egg production. Production for the other States are grouped into an "Other States" category and combined with the 30 States published individually to obtain a U.S. estimate. Individual State estimates for "Other States" are available annually in the "**Chickens and Eggs Summary**" report.

Egg-Type Chicks Hatched Up 2 Percent

Egg-type chicks **hatched** during August totaled 35.2 million, up 2 percent from August 2000. **Eggs in incubators** totaled 33.4 million on September 1, 2001, down 3 percent from a year ago.

Domestic placements of **egg-type pullet chicks for future hatchery supply flocks** by leading breeders totaled 260,000 during August 2001, down 5 percent from August 2000.

Broiler Hatch Up 3 Percent

The August 2001 **hatch** of broiler-type chicks, at 761 million, was up 3 percent from August of the previous year. There were 630 million **eggs in incubators** on September 1, 2001, up 2 percent from a year earlier.

Leading breeders placed 7.49 million **broiler-type pullet chicks for future domestic hatchery supply flocks** during August 2001, up 3 percent from August 2000.

**All Layers: Average Number on Hand During the Month,
United States, 1998-01**

Month	1998	1999	2000	2001
	<i>1,000 Layers</i>	<i>1,000 Layers</i>	<i>1,000 Layers</i>	<i>1,000 Layers</i>
Dec ¹	311,898	321,972	328,828	331,962
Jan	311,906	322,356	328,557	333,283
Feb	313,285	322,827	329,843	335,533
Mar	314,141	322,782	330,862	336,594
Apr	311,957	321,539	329,223	336,763
May	309,655	320,510	326,326	334,768
Jun	309,206	320,441	324,957	332,395
Jul	308,967	319,819	325,563	331,588
Aug	309,291	320,188	325,753	332,129
Sep	311,358	322,409	326,237	
Oct	315,222	325,287	328,178	
Nov	319,625	328,268	330,678	

¹ December preceding year.

**Eggs: Production During the Month by Type,
United States, 2000-01**

Month	Total Eggs		Table Eggs		Hatching Eggs	
	2000	2001	2000	2001	2000	2001
	<i>Million Eggs</i>	<i>Million Eggs</i>	<i>Million Eggs</i>	<i>Million Eggs</i>	<i>Million Eggs</i>	<i>Million Eggs</i>
Dec ¹	7,279	7,279	6,198	6,200	1,081	1,079
Jan	7,157	7,217	6,070	6,119	1,087	1,098
Feb	6,648	6,519	5,625	5,512	1,023	1,007
Mar	7,234	7,331	6,110	6,219	1,124	1,112
Apr	7,013	7,090	5,911	6,009	1,102	1,081
May	7,104	7,231	5,970	6,106	1,134	1,125
Jun	6,801	6,979	5,722	5,896	1,079	1,083
Jul	7,061	7,180	5,952	6,084	1,109	1,096
Aug	7,104	7,206	6,015	6,124	1,089	1,082
Sep	6,854		5,820		1,034	
Oct	7,130		6,063		1,067	
Nov	7,027		5,989		1,038	
During Year	84,412	64,032	71,445	54,269	12,967	9,763

¹ December preceding year.

**Layers and Eggs: Layers on Hand and Eggs Produced by Type,
and Forced Molt, United States, July-August 2000-01**

Item	Unit	2000	2001	2001 as % of 2000
Layers During Jul	1,000			
All Layers		325,563	331,588	102
Table Egg Type		266,502	272,545	102
Hatching Egg Type		59,061	59,043	100
Broiler-Type Hatching		56,333	56,229	100
Egg-Type Hatching		2,728	2,814	103
Eggs per 100 Layers During Jul	Number			
All Layers		2,169	2,165	100
Table Egg Type		2,233	2,232	100
Hatching Egg Type		1,878	1,856	99
Broiler-Type Hatching		1,855	1,832	99
Egg-Type Hatching		2,346	2,345	100
Eggs Produced During Jul	Million			
All Layers		7,061	7,180	102
Table Egg Type		5,952	6,084	102
Hatching Egg Type		1,109	1,096	99
Broiler-Type Hatching		1,045	1,030	99
Egg-Type Hatching		64	66	103
Layers on Aug 1	1,000			
All Layers		326,240	331,505	102
Table Egg Type		267,258	272,801	102
Hatching Egg Type		58,982	58,704	100
Broiler-Type Hatching		56,241	55,930	99
Egg-Type Hatching		2,741	2,774	101
Eggs per 100 Layers on Aug 1	Number			
All Layers		70.1	69.7	99
Table Egg Type		72.3	71.9	99
Hatching Egg Type		60.2	59.5	99
Broiler-Type Hatching		59.4	58.8	99
Egg-Type Hatching		76.0	73.6	97
Forced Molt Layers on Aug 1	Percent			
Percent Being Molted		4.3	4.2	98
Percent with Molt Completed		21.8	23.1	106
Layers Sold for Slaughter During Jul	1,000	15,998	16,186	101
Layers Rendered, Died, Destroyed, Composted or Disappeared For Any Reason During Jul	1,000	4,104	4,735	115
Pullets Less Than 20 Weeks of Age, Aug 1	1,000	100,204	99,130	99
Pullets Added During Jul ¹	1,000	22,959	22,987	100

¹ Pullet chicks one day old added to pullet flocks.

**Layers and Eggs: Layers on Hand and Eggs Produced by Type,
and Forced Molt, United States, August-September 2000-01**

Item	Unit	2000 ¹	2001	2001 as % of 2000
Layers During Aug	1,000			
All Layers		325,753	332,129	102
Table Egg Type		267,716	273,767	102
Hatching Egg Type		58,037	58,362	101
Broiler-Type Hatching		55,271	55,622	101
Egg-Type Hatching		2,766	2,740	99
Eggs per 100 Layers During Aug	Number			
All Layers		2,181	2,170	99
Table Egg Type		2,247	2,237	100
Hatching Egg Type		1,876	1,854	99
Broiler-Type Hatching		1,854	1,834	99
Egg-Type Hatching		2,314	2,263	98
Eggs Produced During Aug	Million			
All Layers		7,104	7,206	101
Table Egg Type		6,015	6,124	102
Hatching Egg Type		1,089	1,082	99
Broiler-Type Hatching		1,025	1,020	100
Egg-Type Hatching		64	62	97
Layers on Sep 1	1,000			
All Layers		325,212	332,715	102
Table Egg Type		268,144	274,709	102
Hatching Egg Type		57,068	58,006	102
Broiler-Type Hatching		54,285	55,305	102
Egg-Type Hatching		2,783	2,701	97
Eggs per 100 Layers on Sep 1	Number			
All Layers		70.4	70.1	100
Table Egg Type		72.5	72.3	100
Hatching Egg Type		60.6	59.9	99
Broiler-Type Hatching		59.9	59.4	99
Egg-Type Hatching		75.1	71.5	95
Forced Molt Layers, Sep 1	Percent			
Percent Being Molted		4.6	4.5	98
Percent with Molt Completed		22.6	22.7	100
Layers Sold for Slaughter During Aug	1,000	17,328	16,463	95
Layers Rendered, Died, Destroyed, Composted or Disappeared For Any Reason During Aug	1,000	1,851	5,400	292
Pullets Less Than 20 Weeks of Age, Sep 1	1,000	97,745	96,239	98
Pullets Added During Aug ²	1,000	21,971	22,174	101

¹ Revised.

² Pullet chicks one day old added to pullet flocks.

Layers and Eggs: Layers on Hand and Eggs Produced by Type, and Forced Molt, 30 Selected States, July-August, 2000-01 ¹

Item	Unit	2000	2001	2001 as % of 2000
Layers During Jul	1,000			
All Layers		305,317	310,720	102
Table Egg Type		251,160	256,475	102
Hatching Egg Type		54,157	54,245	100
Broiler-Type Hatching		51,521	51,516	100
Egg-Type Hatching		2,636	2,729	104
Eggs per 100 Layers During Jul	Number			
All Layers		2,167	2,163	100
Table Egg Type		2,233	2,229	100
Hatching Egg Type		1,861	1,853	100
Broiler-Type Hatching		1,836	1,827	100
Egg-Type Hatching		2,352	2,345	100
Eggs Produced During Jul	Million			
All Layers		6,617	6,721	102
Table Egg Type		5,609	5,716	102
Hatching Egg Type		1,008	1,005	100
Broiler-Type Hatching		946	941	99
Egg-Type Hatching		62	64	103
Layers on Aug 1	1,000			
All Layers		305,863	310,488	102
Table Egg Type		251,836	256,648	102
Hatching Egg Type		54,027	53,840	100
Broiler-Type Hatching		51,371	51,150	100
Egg-Type Hatching		2,656	2,690	101
Eggs per 100 Layers on Aug 1	Number			
All Layers		70.2	69.6	99
Table Egg Type		72.4	71.8	99
Hatching Egg Type		59.7	59.4	99
Broiler-Type Hatching		58.9	58.7	100
Egg-Type Hatching		75.8	73.2	97
Forced Molt Layers on Aug 1	Percent			
Percent Being Molted		4.2	4.1	98
Percent with Molt Completed		21.7	23.1	106
Layers Sold for Slaughter During Jul	1,000	14,834	15,349	103
Layers Rendered, Died, Destroyed, Composted or Disappeared For Any Reason During Jul	1,000	3,927	4,548	116
Pullets Less Than 20 Weeks of Age, Aug 1	1,000	94,229	93,543	99
Pullets Added During Jul ²	1,000	21,534	21,666	101

¹ The 30 States are listed in the table on page 8.

² Pullet chicks one day old added to pullet flocks.

Layers and Eggs: Layers on Hand and Eggs Produced by Type, and Forced Molt, 30 Selected States, August-September, 2000-01 ¹

Item	Unit	2000 ²	2001	2001 as % of 2000
Layers During Aug	1,000			
All Layers		305,491	311,178	102
Table Egg Type		252,219	257,598	102
Hatching Egg Type		53,272	53,580	101
Broiler-Type Hatching		50,606	50,920	101
Egg-Type Hatching		2,666	2,660	100
Eggs per 100 Layers During Aug	1,000			
All Layers		2,181	2,166	99
Table Egg Type		2,248	2,232	99
Hatching Egg Type		1,860	1,851	100
Broiler-Type Hatching		1,836	1,830	100
Egg-Type Hatching		2,326	2,256	97
Eggs Produced During Aug	Million			
All Layers		6,662	6,741	101
Table Egg Type		5,671	5,749	101
Hatching Egg Type		991	992	100
Broiler-Type Hatching		929	932	100
Egg-Type Hatching		62	60	97
Layers on Sep 1	1,000			
All Layers		305,083	311,837	102
Table Egg Type		252,584	258,531	102
Hatching Egg Type		52,499	53,306	102
Broiler-Type Hatching		49,829	50,681	102
Egg-Type Hatching		2,670	2,625	98
Eggs per 100 Layers on Sep 1	Number			
All Layers		70.3	70.0	100
Table Egg Type		72.5	72.1	99
Hatching Egg Type		60.0	59.8	100
Broiler-Type Hatching		59.2	59.2	100
Egg-Type Hatching		75.1	71.1	95
Forced Molt Layers, Sep 1	Percent			
Percent Being Molted		4.6	4.5	98
Percent with Molt Completed		22.4	22.7	101
Layers Sold for Slaughter During Aug	1,000	16,344	15,516	95
Layers Rendered, Died, Destroyed, Composted or Disappeared For Any Reason During Aug	1,000	1,832	5,211	284
Pullets Less Than 20 Weeks of Age, Sep 1	1,000	91,762	90,350	98
Pullets Added During Aug ³	1,000	20,773	21,197	102

¹ The 30 States are listed in the table on page 8.

² Revised.

³ Pullet chicks one day old added to pullet flocks.

**Layers and Eggs: Layers on Hand and Eggs Produced by State
and United States, During July 2000-01**

State	Table Egg Layers in Flocks 30,000 and Above		All Layers ¹		Eggs per 100 for All Layers ¹	
	2000	2001	2000	2001	2000	2001
	<i>1,000</i>	<i>1,000</i>	<i>1,000</i>	<i>1,000</i>	<i>Number</i>	<i>Number</i>
AL	2,881	2,744	10,563	10,631	1,893	1,910
AR	4,956	4,735	15,162	14,652	1,972	1,931
CA	23,035	22,506	23,661	23,114	2,210	2,185
CO	3,115	3,050	3,541	3,544	2,313	2,257
CT	3,088	3,035	3,222	3,112	2,328	2,410
FL	9,523	9,840	10,141	10,645	2,169	2,132
GA	11,887	11,198	20,986	20,458	2,035	2,033
HI	580	535	603	564	2,023	1,933
IL	3,376	2,964	3,655	3,212	2,161	2,428
IN	21,884	22,178	22,567	22,910	2,282	2,230
IA	26,831	31,791	27,634	32,597	2,294	2,261
ME	4,243	4,126	4,314	4,190	2,012	2,358
MD	2,614	2,935	3,003	3,236	1,998	2,225
MI	6,100	6,119	6,379	6,370	2,228	2,214
MN	11,903	11,190	12,621	11,900	2,179	2,185
MS	1,713	1,723	6,606	6,673	2,013	1,948
MO	4,668	4,848	5,938	6,156	2,273	2,112
NE	11,921	11,430	12,071	11,530	2,063	2,160
NY	3,722	3,827	3,919	4,129	2,424	2,398
NC	3,160	3,080	10,980	10,830	1,867	1,902
OH	30,494	29,411	31,178	30,049	2,268	2,193
OK	1,956	1,912	4,040	4,081	1,955	1,911
OR	2,736	2,787	2,908	2,967	2,235	2,393
PA	21,517	22,805	23,061	24,262	2,294	2,312
SC	4,193	4,707	5,177	5,697	2,028	2,159
SD	1,938	2,143	2,198	2,343	2,229	1,963
TX	12,216	14,024	16,426	18,348	2,161	2,131
VA	1,503	1,366	3,465	3,187	2,020	2,040
WA	4,792	4,767	4,912	4,842	2,329	2,295
WI	3,738	3,889	4,386	4,491	2,189	2,316
30 Sts	246,283	251,665	305,317	310,720	2,167	2,163
Oth Sts ²	14,311	14,877	20,246	20,868	2,193	2,204
US	260,594	266,542	325,563	331,588	2,169	2,165

¹ Includes all layers and eggs produced in both table egg and hatching egg flocks regardless of size.

² Estimates for individual States are not available.

**Layers and Eggs: Layers on Hand and Eggs Produced by State
and United States, During August 2000-01**

State	Table Egg Layers in Flocks 30,000 and Above		All Layers ¹		Eggs per 100 for All Layers ¹	
	2000	2001	2000	2001	2000	2001
	<i>1,000</i>	<i>1,000</i>	<i>1,000</i>	<i>1,000</i>	<i>Number</i>	<i>Number</i>
AL	2,935	2,801	10,457	10,494	1,913	1,925
AR	5,194	4,692	15,218	14,289	1,945	1,911
CA	23,036	22,359	23,624	22,906	2,243	2,196
CO	3,055	2,997	3,486	3,503	2,295	2,255
CT	3,075	2,994	3,209	3,050	2,400	2,325
FL	9,683	10,024	10,304	10,824	2,222	2,134
GA	11,743	11,270	20,730	20,511	2,055	2,077
HI	582	532	607	561	1,977	1,854
IL	3,259	3,130	3,531	3,379	2,266	2,338
IN	21,769	22,017	22,477	22,726	2,247	2,257
IA	26,867	32,085	27,649	32,869	2,279	2,248
ME	4,216	4,001	4,281	4,064	1,979	2,185
MD	2,549	2,880	2,875	3,146	2,157	2,352
MI	5,892	6,118	6,168	6,369	2,221	2,088
MN	11,878	11,225	12,593	11,930	2,208	2,263
MS	1,779	1,926	6,607	6,838	1,968	1,930
MO	4,668	4,761	5,961	6,111	2,356	2,095
NE	11,940	11,526	12,048	11,626	2,158	2,228
NY	3,776	3,676	3,978	3,985	2,413	2,409
NC	3,301	3,197	10,872	11,015	1,858	1,934
OH	30,434	29,127	31,104	29,756	2,276	2,208
OK	1,961	1,926	4,012	4,075	1,969	1,914
OR	2,782	2,805	2,956	2,978	2,267	2,317
PA	22,038	23,167	23,578	24,615	2,320	2,324
SC	4,219	4,743	5,225	5,772	2,124	2,148
SD	1,934	2,180	2,194	2,380	2,325	2,143
TX	12,762	14,257	17,004	18,554	2,129	2,097
VA	1,481	1,485	3,418	3,310	1,989	1,994
WA	4,690	4,912	4,810	4,983	2,295	2,288
WI	3,882	3,975	4,515	4,559	2,303	2,215
30 Sts	247,380	252,788	305,491	311,178	2,181	2,166
Oth Sts ²	14,467	14,976	20,262	20,951	2,181	2,224
US	261,847	267,764	325,753	332,129	2,181	2,170

¹ Includes all layers and eggs produced in both table egg and hatching egg flocks regardless of size.

² Estimates for individual States are not available.

**Egg Production: By Type, State, and United States,
July 2000-01**

State	Total Production		Table Eggs ¹		Hatching Eggs ¹	
	2000	2001	2000	2001	2000	2001
	<i>Million Eggs</i>	<i>Million Eggs</i>	<i>Million Eggs</i>	<i>Million Eggs</i>	<i>Million Eggs</i>	<i>Million Eggs</i>
AL	200	203	62	61	138	142
AR	299	283	114	106	185	177
CA	523	505				
CO	83	80				
CT	75	75				
FL	220	227	209	212	11	15
GA	427	416	249	240	178	176
HI	12.2	10.9	12.2	10.9	0	0
IL	79	78	75	74	4	4
IN	515	511	502	498	13	13
IA	634	737				
ME	87	99				
MD	60	72	54	67	6	5
MI	142	141				
MN	275	260	265	251	10	9
MS	133	130	42	40	91	90
MO	135	130				
NE	249	249	249	249	0	0
NY	95	99				
NC	205	206	78	73	127	133
OH	707	659				
OK	79	78	45	44	34	34
OR	65	71	64	69	1	2
PA	529	561	508	542	21	19
SC	105	123	87	104	18	19
SD	49	46	49	46	0	0
TX	355	391				
VA	70	65	34	33	36	32
WA	114	111				
WI	96	104				
30 Sts	6,617	6,721	5,609	5,716	1,008	1,005
Oth Sts ²	444	460	343	368	101	91
US	7,061	7,180	5,952	6,084	1,109	1,096

¹ Data by type of flock not shown for some States to avoid disclosing individual operations.

² Estimates for individual States are not available.

**Egg Production: By Type, State, and United States,
August 2000-01**

State	Total Production		Table Eggs ¹		Hatching Eggs ¹	
	2000	2001	2000	2001	2000	2001
	<i>Million Eggs</i>	<i>Million Eggs</i>	<i>Million Eggs</i>	<i>Million Eggs</i>	<i>Million Eggs</i>	<i>Million Eggs</i>
AL	200	202	61	62	139	140
AR	296	273	115	103	181	170
CA	530	503				
CO	80	79				
CT	77	71				
FL	229	231	218	217	11	14
GA	426	426	251	252	175	174
HI	12.0	10.4	12.0	10.4	0	0
IL	80	79	76	75	4	4
IN	505	513	492	500	13	13
IA	630	739				
ME	85	89				
MD	62	74	57	69	5	5
MI	137	133				
MN	278	270	269	261	9	9
MS	130	132	41	42	89	90
MO	140	128				
NE	260	259	260	259	0	0
NY	96	96				
NC	202	213	80	76	122	137
OH	708	657				
OK	79	78	46	45	33	33
OR	67	69	65	67	2	2
PA	547	572	526	554	21	18
SC	111	124	93	105	18	19
SD	51	51	51	51	0	0
TX	362	389				
VA	68	66	34	35	34	31
WA	110	114				
WI	104	101				
30 Sts	6,662	6,741	5,671	5,749	991	992
Oth Sts ²	442	466	344	375	98	90
US	7,104	7,206	6,015	6,124	1,089	1,082

¹ Data by type of flock not shown for some States to avoid disclosing individual operations.

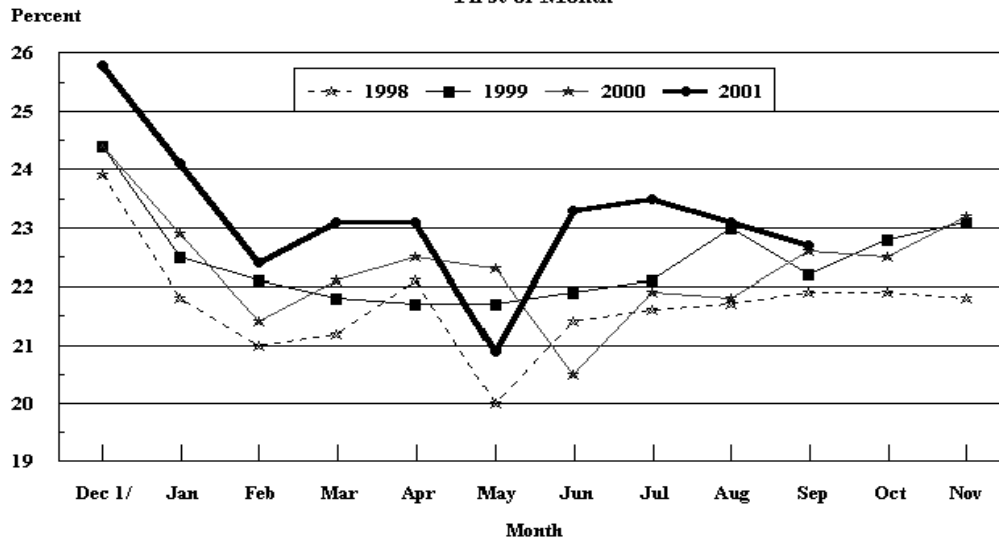
² Estimates for individual States are not available.

**Forced Molt: Percent of All Layers by Month,
United States, 2000-01¹**

Month	Percent Being Molted		Percent with Molt Completed	
	2000	2001	2000	2001
	<i>Percent</i>	<i>Percent</i>	<i>Percent</i>	<i>Percent</i>
Jan	2.9	3.4	22.9	24.1
Feb	5.0	5.1	21.4	22.4
Mar	3.7	4.2	22.1	23.1
Apr	2.2	2.0	22.5	23.1
May	4.0	5.1	22.3	20.9
Jun	5.8	4.6	20.5	23.3
Jul	4.8	4.5	21.9	23.5
Aug	4.3	4.2	21.8	23.1
Sep	4.6	4.5	22.6	22.7
Oct	5.7		22.5	
Nov	4.0		23.2	
Dec	2.9		25.8	

¹ As of first of month.

**All Layers: United States
Percent Molt Completed, 1998 - 2001
First of Month**



1/ Previous year

**Forced Molt: Percent of All Layers by State
and United States, September 2000-01 ¹**

State	Percent Being Molted		Percent with Molt Completed	
	2000 <i>Percent</i>	2001 <i>Percent</i>	2000 <i>Percent</i>	2001 <i>Percent</i>
AL	2.0	1.5	12.0	6.0
AR	3.0	2.0	9.5	7.0
CA	6.5	5.0	36.5	33.0
CO	0.0	3.5	26.5	18.5
CT	3.0	3.5	12.0	9.5
FL	5.5	7.0	33.5	37.0
GA	3.0	4.5	21.0	15.5
HI	4.0	8.0	49.0	36.0
IL	6.0	5.5	42.5	18.0
IN	3.5	4.0	27.5	30.5
IA	4.0	4.0	28.5	29.5
ME	0.0	0.0	0.0	0.0
MD	6.5	11.0	29.5	14.5
MI	4.0	7.0	28.5	40.5
MN	3.0	4.0	31.5	31.0
MS	4.0	2.0	16.0	11.5
MO	0.0	6.0	13.0	27.5
NE	5.0	5.5	25.0	27.0
NY	1.0	0.5	6.0	0.5
NC	1.5	0.5	9.0	9.5
OH	10.5	5.5	15.5	21.0
OK	1.5	0.0	9.0	7.0
OR	9.0	6.5	35.0	33.5
PA	5.0	5.0	17.0	20.0
SC	2.0	5.0	33.5	25.5
SD	2.0	5.0	25.5	30.5
TX	4.0	7.0	19.0	20.5
VA	3.0	3.0	16.0	18.0
WA	9.0	11.0	38.5	41.5
WI	7.5	5.5	29.0	26.0
30 Sts	4.6	4.5	22.4	22.7
Oth Sts ²	5.8	4.6	26.3	23.5
US	4.6	4.5	22.6	22.7

¹ As of first of month.

² Estimates for individual States are not available.

**Hatchery Production: Eggs in Incubators, Chicks Hatched,
and Placements by Type, United States, August-September 2000-01**

Item	2000	2001	2001 as % of 2000
	<i>1,000</i>	<i>1,000</i>	<i>Percent</i>
Egg-Type			
Eggs in Incubators on Sep 1	34,381	33,421	97
Chicks Hatched During Aug	34,324	35,162	102
Chicks Hatched Jan thru Aug	290,365	314,219	108
Pullets Hatched During Aug for Intended Placements in Hatchery Supply Flocks	275	260	95
7-18 Month Earlier ¹	2,986	3,622	121
Broiler-Type			
Eggs in Incubators on Sep 1	615,049	629,935	102
Chicks Hatched During Aug	740,890	761,233	103
Chicks Hatched Jan thru Aug	5,964,527	5,966,807	100
Pullets Hatched During Aug for Intended Placements in Hatchery Supply Flocks	7,288	7,494	103
7-15 Months Earlier ²	64,365	61,244	95

¹ 2001 includes pullet chicks hatched Feb 2000 through Jan 2001.

² 2001 includes pullet chicks hatched May 2000 through Jan 2001.

**Egg-Type Eggs in Incubators: By Region and United States,
September 1, 2000-01**

Geographic Division	2000	2001	2001 as % of 2000
	<i>1,000</i>	<i>1,000</i>	<i>Percent</i>
North Atlantic	6,174	5,409	88
E North Central	8,518	5,503	65
W North Central	6,034	6,611	110
South Atlantic	4,526	5,406	119
South Central	4,634	5,484	118
West	4,495	5,008	111
US	34,381	33,421	97

Regional Listing:

North Atlantic = CT, ME, MA, NH, NJ, NY, PA, RI, VT.

E North Central = IL, IN, MI, OH, WI.

W North Central = IA, KS, MN, MO, NE, ND, SD.

South Atlantic = DE, FL, GA, MD, NC, SC, VA, WV.

South Central = AL, AR, KY, LA, MS, OK, TN, TX.

West = AK, AZ, CA, CO, HI, ID, MT, NM, NV, OR, UT, WA, WY.

**Egg-Type Chicks Hatched: By State and United States,
August 2000-01**

State	August			Jan-Aug		
	2000	2001	2001 as % of 2000	2000	2001	2001 as % of 2000
	<i>1,000</i>	<i>1,000</i>	<i>Percent</i>	<i>1,000</i>	<i>1,000</i>	<i>Percent</i>
AR	1,067	855	80	6,849	6,749	99
FL	983	1,101	112	8,067	7,645	95
GA	1,955	1,523	78	15,172	16,349	108
IN	4,771	3,924	82	46,276	52,350	113
IA	5,106	5,808	114	44,363	45,033	102
MN	1,468	1,468	100	14,258	13,221	93
PA	5,688	5,351	94	41,822	44,354	106
Oth Sts ¹	13,286	15,132	114	113,558	128,518	113
US	34,324	35,162	102	290,365	314,219	108

¹ Not published separately to avoid disclosing data for individual operations.

Egg-Type Chicks Hatched: By Month, United States, 1999-01

Month	By Months				Cumulative			
	1999	2000	2001	2001 as % of 2000	1999	2000	2001	2001 as % of 2000
	<i>1,000</i>	<i>1,000</i>	<i>1,000</i>	<i>Percent</i>	<i>1,000</i>	<i>1,000</i>	<i>1,000</i>	<i>Percent</i>
Jan	35,242	34,178	37,976	111	35,242	34,178	37,976	111
Feb	36,367	34,656	38,198	110	71,609	68,834	76,174	111
Mar	41,172	38,874	40,109	103	112,781	107,708	116,283	108
Apr	42,285	36,649	41,691	114	155,066	144,357	157,974	109
May	40,726	41,182	42,579	103	195,792	185,539	200,553	108
Jun	41,439	37,265	40,601	109	237,231	222,804	241,154	108
Jul	34,275	33,237	37,903	114	271,506	256,041	279,057	109
Aug	35,518	34,324	35,162	102	307,024	290,365	314,219	108
Sep	39,287	36,316			346,311	326,681		
Oct	39,044	36,077			385,355	362,758		
Nov	32,802	32,290			418,157	395,048		
Dec	33,564	34,690			451,721	429,738		

**Intended Placements: Egg-Type Pullet Chicks for Hatchery Supply
Flocks by Month and Total, United States, 1999-01 ¹**

Month	Pullet Chicks Hatched			2001 as % of 2000	Cumulative Potential Placements Relative to Current Supply Flocks 7-18 Months Earlier ²		
	1999	2000	2001		2000	2001	2002
	<i>1,000</i>	<i>1,000</i>	<i>1,000</i>	<i>Percent</i>	<i>1,000</i>	<i>1,000</i>	<i>1,000</i>
Jan	166	212	322	152	3,012	3,117	3,713
Feb	267	251	302	120	2,945	3,238	3,683
Mar	257	286	372	130	3,078	3,195	3,668
Apr	287	309	293	95	2,981	3,245	
May	283	343	293	85	2,903	3,248	
Jun	187	223	243	109	2,948	3,363	
Jul	231	352	322	91	2,940	3,512	
Aug	318	275	260	95	2,986	3,622	
Sep	227	277			2,970	3,673	
Oct	280	283			2,999	3,759	
Nov	262	377			3,021	3,743	
Dec	175	324			3,081	3,693	
Total	2,940	3,512					

¹ Reported by leading breeders. Coverage may not be 100 percent. Includes expected pullet chicks from eggs sold during the preceding month at the rate of 125 pullet chicks per 30 dozen case of eggs.

² For August 2001, includes breeder pullet chicks hatched Feb 2000 through Jan 2001. The 7-18 months represent the first laying cycle. Molting and additional laying cycles will increase the cumulative potential placements.

**Broiler-Type Eggs in Incubators: By Region
and United States, September 1, 2000-01**

Geographic Division	2000	2001	2001 as % of 2000
	<i>1,000</i>	<i>1,000</i>	<i>Percent</i>
North Atlantic	10,460	12,360	118
E North Central	7,587	7,670	101
W North Central	19,882	21,087	106
South Atlantic	226,233	231,543	102
South Central	327,161	334,477	102
West	23,726	22,798	96
US	615,049	629,935	102

**Broiler-Type Chicks Hatched: By State
and United States, August 2000-01**

State	August			Jan-Aug		
	2000	2001	2001 as % of 2000	2000	2001	2001 as % of 2000
	<i>1,000</i>	<i>1,000</i>	<i>Percent</i>	<i>1,000</i>	<i>1,000</i>	<i>Percent</i>
AL	103,430	108,188	105	821,096	826,544	101
AR	108,528	109,905	101	871,362	857,107	98
DE	14,656	12,383	84	121,492	105,148	87
FL	9,616	8,599	89	77,480	70,420	91
GA	107,302	112,894	105	883,606	892,870	101
MD	30,567	31,793	104	244,393	246,086	101
MS	66,305	68,719	104	522,982	536,062	103
NC	63,793	63,609	100	518,820	507,331	98
PA	13,077	13,430	103	102,779	103,713	101
SC	16,617	16,912	102	133,590	134,503	101
TX	49,099	51,994	106	411,879	425,329	103
VA	23,716	24,270	102	190,949	192,780	101
CA TN & WV	38,587	41,533	108	321,158	322,953	101
15 Sts ¹	645,293	664,229	103	5,221,586	5,220,846	100
Oth Sts ²	95,597	97,004	101	742,941	745,961	100
US	740,890	761,233	103	5,964,527	5,966,807	100

¹ States in the weekly hatchery production estimating program.

² Not published separately to avoid disclosing data for individual operations.

Broiler-Type Chicks Hatched: By Month, United States, 1999-01

Month	By Months				Cumulative			
	1999	2000	2001	2001 as % of 2000	1999	2000	2001	2001 as % of 2000
	<i>1,000</i>	<i>1,000</i>	<i>1,000</i>	<i>Percent</i>	<i>1,000</i>	<i>1,000</i>	<i>1,000</i>	<i>Percent</i>
Jan	735,768	751,599	733,889	98	735,768	751,599	733,889	98
Feb	662,604	703,466	670,498	95	1,398,372	1,455,065	1,404,387	97
Mar	755,804	759,244	763,450	101	2,154,176	2,214,309	2,167,837	98
Apr	734,734	746,830	745,304	100	2,888,910	2,961,139	2,913,141	98
May	766,422	774,983	775,674	100	3,655,332	3,736,122	3,688,815	99
Jun	744,372	747,327	756,556	101	4,399,704	4,483,449	4,445,371	99
Jul	751,627	740,188	760,203	103	5,151,331	5,223,637	5,205,574	100
Aug	741,716	740,890	761,233	103	5,893,047	5,964,527	5,966,807	100
Sep	700,016	702,625			6,593,063	6,667,152		
Oct	697,428	711,278			7,290,491	7,378,430		
Nov	676,762	675,038			7,967,253	8,053,468		
Dec	748,170	738,664			8,715,423	8,792,132		

**Intended Placements: Broiler-Type Pullet Chicks for Hatchery
Supply Flocks by Month and Total, 1999-01 ¹**

Month	Pullet Chicks Hatched			2001 as % of 2000	Cumulative Potential Placements Relative to Current Supply Flocks 7-15 Months Earlier ²		
	1999	2000	2001		2000	2001	2002
	<i>1,000</i>	<i>1,000</i>	<i>1,000</i>	<i>Percent</i>	<i>1,000</i>	<i>1,000</i>	<i>1,000</i>
US Place- ments							
Jan	7,059	6,861	6,685	97	64,139	63,304	60,750
Feb	6,882	7,001	6,748	96	64,344	62,493	60,382
Mar	7,284	7,310	6,752	92	64,697	62,797	60,771
Apr	7,038	6,764	6,398	95	64,663	62,267	
May	7,736	7,435	7,117	96	64,725	62,100	
Jun	7,041	6,829	6,822	100	64,827	62,204	
Jul	7,088	6,310	6,326	100	64,542	61,323	
Aug	7,665	7,288	7,494	103	64,365	61,244	
Sep	6,870	6,469			63,630	60,557	
Oct	7,121	6,694			63,899	60,480	
Nov	6,984	7,105			63,575	60,568	
Dec	6,999	6,429			63,345	60,397	
Annual Total	85,767	82,495					
Total Place- ments ³							
Jan	8,679	8,069	7,615	94			
Feb	8,473	8,302	8,275	100			
Mar	8,863	8,798	8,325	95			
Apr	8,572	8,522	7,915	93			
May	9,463	8,917	8,647	97			
Jun	8,333	8,201	8,220	100			
Jul	8,342	7,621	7,687	101			
Aug	8,983	8,657	9,133	105			
Sep	8,044	8,042					
Oct	8,223	8,260					
Nov	8,220	8,702					
Dec	8,305	7,614					
Annual Total	102,500	99,705					

¹ Reported by leading breeders. Coverage may not be 100 percent. Includes expected pullet chicks from eggs sold during the preceding month at the rate of 125 pullet chicks per 30 dozen case of eggs.

² For Aug 2001, includes breeder pullet chicks hatched May 2000 through Jan 2001.

³ U.S. production of intended placements worldwide.

Procedures and Reliability

Data Sources: Primary data for the "**Chickens and Eggs**" report are from weekly and/or monthly questionnaires sent to producers. An attempt is made to collect information for layer and egg estimates from each known contractor and independent producer who has over 30,000 table egg layers. Coverage for operations with less than 30,000 table egg layers are estimated each month based on data reported in December. Approximately 900 contractors, independent egg producers, and started pullet operations are contacted each month. All known hatcheries, approximately 330, are contacted for information on a weekly and/or monthly basis.

Revisions: The previous month's estimates are subject to revision if late reports or corrected data indicates a different level. Additionally, revisions needed after the monthly report will be made at the end of the marketing year and published in the annual summaries of "**Chickens and Eggs Summary**" and "**Hatchery Production**".

Procedures and Reliability: Operations are mailed a questionnaire and given adequate time to respond by mail. Those that do not respond are phoned. Great care is exercised to ensure that all operations are accounted for during each survey period. However, there are usually missing reports that must be accounted for in the estimates.

Sound statistical methodology is employed to derive estimates from the reported data. All data are checked for unusual values. All operations' data are compared to their own past operating profiles and also to trends from other operations. Data for missing operations are estimated based on similar operations or historical data. Survey data are subject to non-sampling errors such as omissions and mistakes in reporting and in processing. While these errors cannot be measured directly, they are minimized by reviewing all data for consistency and reasonableness.

Egg-type chicks hatched are comprised of all chicks of egg-type domesticated breeds including males and chicks destined for hatchery supply flocks and research purposes. The relationship of chicks hatched to chicken inventory and poultry marketings is carefully monitored. The disposition of egg-type chicks hatched prior to placement into the laying flock can vary significantly, which can make comparisons to changes in layer inventory inconsistent over time.

Intended placement data reported by leading breeders include pullet chicks expected from eggs sold the preceding month. The breeders in this report account for a large percentage of replacement pullets for hatchery supply flocks. Production of replacement pullets by these breeders indicates the number of pullets available to hatchery egg supply flocks several months before the pullets will actually move into the flocks. Beginning with the January 1996 publication the broiler-type cumulative potential placements went from 7-14 months earlier to 7-15 months earlier. The egg-type cumulative potential placements of 7-18 months represent the first laying cycle. Molting and additional laying cycles will increase the cumulative potential placements of egg-type hatching flocks.

The next "Chickens and Eggs" report will be released at 3 p.m. ET on October 22, 2001.

The United States Department of Agriculture (USDA) prohibits discrimination in all its programs on the basis of race, color, national origin, gender, religion, age, disability, political beliefs, sexual orientation, and marital or family status. (Not all prohibited bases apply to all programs.) Persons with disabilities who require alternative means for communication of program information (braille, large print, audiotape, etc.) should contact the USDA's TARGET Center at 202-720-2600 (voice and TDD).

To file a complaint of discrimination, write USDA, Director, Office of Civil Rights, Room 326-W, Whitten Building, 1400 Independence Avenue, SW, Washington, D.C., 20250-9410, or call 202-720-5964 (voice or TDD). USDA is an equal opportunity provider and employer.

ACCESS TO REPORTS!!

For your convenience, there are several ways to obtain NASS reports, data products, and services:

INTERNET ACCESS

All NASS reports are available free of charge on the worldwide Internet. For access, connect to the Internet and go to the NASS Home Page at: <http://www.usda.gov/nass/>. Select "Today's Reports" or Publications and then Reports by Calendar or Publications and then Search, by Title or Subject.

E-MAIL SUBSCRIPTION

There are two options for subscribing via e-mail. All NASS reports are available by subscription free of charge direct to your e-mail address. 1) Starting with the NASS Home Page at <http://www.usda.gov/nass/>, click on **Publications**, then click on the **Subscribe by E-mail** button which takes you to the page describing e-mail delivery of reports. Finally, click on **Go to the Subscription Page** and follow the instructions. 2) If you do NOT have Internet access, send an e-mail message to: usda-reports@usda.mannlib.cornell.edu. In the body of the message type the word: **list**.

AUTOFAX ACCESS

NASSFax service is available for some reports from your fax machine. Please call 202-720-2000, using the handset attached to your fax. Respond to the voice prompts. Document 0411 is a list of available reports.

PRINTED REPORTS OR DATA PRODUCTS

CALL OUR TOLL-FREE ORDER DESK: 800-999-6779 (U.S. and Canada)
Other areas, please call 703-605-6220 FAX: 703-605-6900
(Visa, MasterCard, check, or money order acceptable for payment.)

ASSISTANCE

For **assistance** with general agricultural statistics or further information about NASS or its products or services, contact the **Agricultural Statistics Hotline** at **800-727-9540**, 7:30 a.m. to 4:00 p.m. ET, or e-mail: nass@nass.usda.gov.