

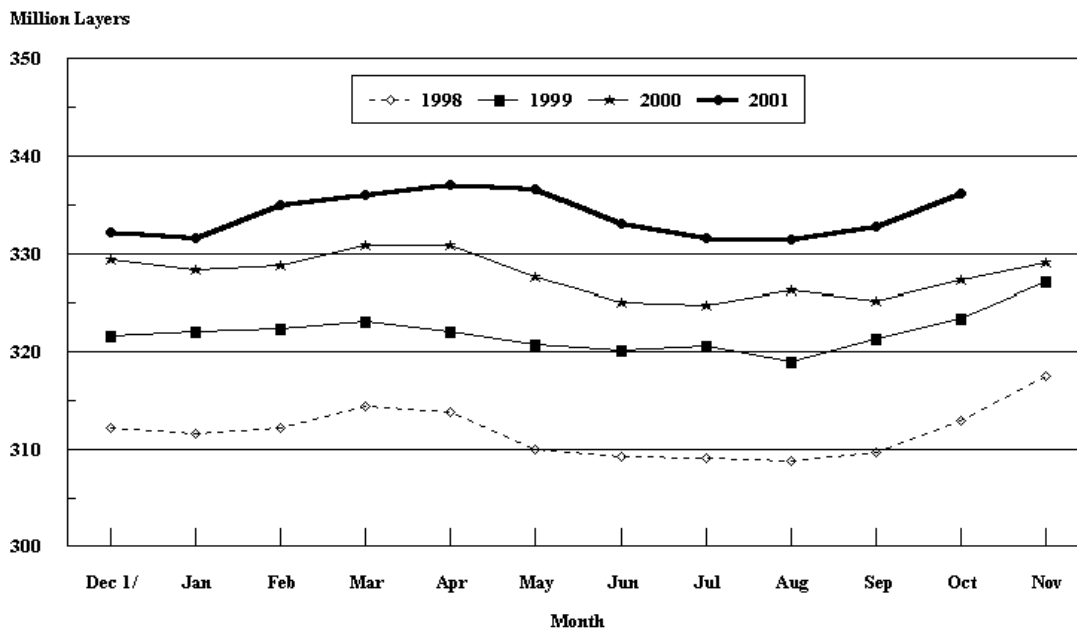
Released October 22, 2001, by the National Agricultural Statistics Service (NASS), Agricultural Statistics Board, U.S. Department of Agriculture. For information on "Chickens and Eggs" call Tom Kruchten at (202) 690-4870. For information on Hatch call Jody Roberts at (202) 690-8632, office hours 7:30 a.m. to 4:00 p.m. ET.

September Egg Production Up 3 Percent

U.S. egg production totaled 7.04 billion during September 2001, up 3 percent from last year. Production included 5.99 billion table eggs and 1.05 billion hatching eggs, of which 993 million were broiler-type and 59.0 million were egg-type. The total number of layers during September 2001 averaged 335 million, up 3 percent from the total average number of layers during September 2000. September egg production per 100 layers was 2,104 eggs, slightly above the 2,101 eggs in September 2000.

September 2001 contained 20 weekdays, and five Saturdays, compared to 21 weekdays, and five Saturdays in September 2000.

All Layers: 1st of Month United States, 1998 - 2001



All layers in the U.S. on October 1, 2001, totaled 336 million, up 3 percent from a year ago. The 336 million layers consisted of 278 million layers producing table or commercial type eggs, 55.9 million layers producing broiler-type hatching eggs, and 2.63 million layers producing egg-type hatching eggs. Rate of lay per day on October 1, 2001, averaged 69.9 eggs per 100 layers, up 1 percent from the 69.5 eggs a year ago.

Laying flocks in the 30 major egg producing States produced 6.59 billion eggs during September 2001, up 3 percent from September 2000. The average number of layers during September, at 314 million, was up 3 percent from a year earlier.

Individual State estimates are available for the 30 major egg producing States. These States are listed on page 8 of this release and account for approximately 95 percent of the total U.S. egg production. Production for the other States are grouped into an "Other States" category and combined with the 30 States published individually to obtain a U.S. estimate. Individual State estimates for "Other States" are available annually in the "**Chickens and Eggs Summary**" report.

Egg-Type Chicks Hatched Up 1 Percent

Egg-type chicks **hatched** during September totaled 36.6 million, up 1 percent from September 2000. **Eggs in incubators** totaled 32.3 million on October 1, 2001, up 5 percent from a year ago.

Domestic placements of **egg-type pullet chicks for future hatchery supply flocks** by leading breeders totaled 225,000 during September 2001, down 19 percent from September 2000.

Broiler Hatch Up 4 Percent

The September 2001 **hatch** of broiler-type chicks, at 730 million, was up 4 percent from September of the previous year. There were 608 million **eggs in incubators** on October 1, 2001, up 4 percent from a year earlier.

Leading breeders placed 6.65 million **broiler-type pullet chicks for future domestic hatchery supply flocks** during September 2001, up 3 percent from September 2000.

**All Layers: Average Number on Hand During the Month,
United States, 1998-01**

Month	1998	1999	2000	2001
	<i>1,000 Layers</i>	<i>1,000 Layers</i>	<i>1,000 Layers</i>	<i>1,000 Layers</i>
Dec ¹	311,898	321,972	328,828	331,962
Jan	311,906	322,356	328,557	333,283
Feb	313,285	322,827	329,843	335,533
Mar	314,141	322,782	330,862	336,594
Apr	311,957	321,539	329,223	336,763
May	309,655	320,510	326,326	334,768
Jun	309,206	320,441	324,957	332,395
Jul	308,967	319,819	325,563	331,588
Aug	309,291	320,188	325,753	332,204
Sep	311,358	322,409	326,237	334,526
Oct	315,222	325,287	328,178	
Nov	319,625	328,268	330,678	

¹ December preceding year.

**Eggs: Production During the Month by Type,
United States, 2000-01**

Month	Total Eggs		Table Eggs		Hatching Eggs	
	2000	2001	2000	2001	2000	2001
	<i>Million Eggs</i>	<i>Million Eggs</i>	<i>Million Eggs</i>	<i>Million Eggs</i>	<i>Million Eggs</i>	<i>Million Eggs</i>
Dec ¹	7,279	7,279	6,198	6,200	1,081	1,079
Jan	7,157	7,217	6,070	6,119	1,087	1,098
Feb	6,648	6,519	5,625	5,512	1,023	1,007
Mar	7,234	7,331	6,110	6,219	1,124	1,112
Apr	7,013	7,090	5,911	6,009	1,102	1,081
May	7,104	7,231	5,970	6,106	1,134	1,125
Jun	6,801	6,979	5,722	5,896	1,079	1,083
Jul	7,061	7,180	5,952	6,084	1,109	1,096
Aug	7,104	7,207	6,015	6,125	1,089	1,082
Sep	6,854	7,037	5,820	5,985	1,034	1,052
Oct	7,130		6,063		1,067	
Nov	7,027		5,989		1,038	
During Year	84,412	71,070	71,445	60,255	12,967	10,815

¹ December preceding year.

**Layers and Eggs: Layers on Hand and Eggs Produced by Type,
and Forced Molt, United States, August-September 2000-01**

Item	Unit	2000	2001	2001 as % of 2000
Layers During Aug	1,000			
All Layers		325,753	332,204	102
Table Egg Type		267,716	273,878	102
Hatching Egg Type		58,037	58,326	100
Broiler-Type Hatching		55,271	55,586	101
Egg-Type Hatching		2,766	2,740	99
Eggs per 100 Layers During Aug	Number			
All Layers		2,181	2,169	99
Table Egg Type		2,247	2,236	100
Hatching Egg Type		1,876	1,855	99
Broiler-Type Hatching		1,854	1,835	99
Egg-Type Hatching		2,314	2,263	98
Eggs Produced During Aug	Million			
All Layers		7,104	7,207	101
Table Egg Type		6,015	6,125	102
Hatching Egg Type		1,089	1,082	99
Broiler-Type Hatching		1,025	1,020	100
Egg-Type Hatching		64	62	97
Layers on Sep 1	1,000			
All Layers		325,212	332,867	102
Table Egg Type		268,144	274,932	103
Hatching Egg Type		57,068	57,935	102
Broiler-Type Hatching		54,285	55,234	102
Egg-Type Hatching		2,783	2,701	97
Eggs per 100 Layers on Sep 1	Number			
All Layers		70.4	70.2	100
Table Egg Type		72.5	72.3	100
Hatching Egg Type		60.6	60.0	99
Broiler-Type Hatching		59.9	59.4	99
Egg-Type Hatching		75.1	71.5	95
Forced Molt Layers on Sep 1	Percent			
Percent Being Molted		4.6	4.5	98
Percent with Molt Completed		22.6	22.7	100
Layers Sold for Slaughter During Aug	1,000	17,328	16,440	95
Layers Rendered, Died, Destroyed, Composted or Disappeared For Any Reason During Aug	1,000	1,851	5,400	292
Pullets Less Than 20 Weeks of Age, Sep 1	1,000	97,745	96,705	99
Pullets Added During Aug ¹	1,000	21,971	22,267	101

¹ Pullet chicks one day old added to pullet flocks.

**Layers and Eggs: Layers on Hand and Eggs Produced by Type,
and Forced Molt, United States, September-October 2000-01**

Item	Unit	2000 ¹	2001	2001 as % of 2000
Layers During Sep	1,000			
All Layers		326,237	334,526	103
Table Egg Type		269,597	276,273	102
Hatching Egg Type		56,640	58,253	103
Broiler-Type Hatching		53,909	55,585	103
Egg-Type Hatching		2,731	2,668	98
Eggs per 100 Layers During Sep	Number			
All Layers		2,101	2,104	100
Table Egg Type		2,159	2,166	100
Hatching Egg Type		1,826	1,806	99
Broiler-Type Hatching		1,805	1,786	99
Egg-Type Hatching		2,234	2,211	99
Eggs Produced During Sep	Million			
All Layers		6,854	7,037	103
Table Egg Type		5,820	5,985	103
Hatching Egg Type		1,034	1,052	102
Broiler-Type Hatching		973	993	102
Egg-Type Hatching		61	59	97
Layers on Oct 1	1,000			
All Layers		327,219	336,109	103
Table Egg Type		271,030	277,592	102
Hatching Egg Type		56,189	58,517	104
Broiler-Type Hatching		53,520	55,891	104
Egg-Type Hatching		2,669	2,625	98
Eggs per 100 Layers on Oct 1	Number			
All Layers		69.5	69.9	101
Table Egg Type		71.3	72.0	101
Hatching Egg Type		60.8	59.9	99
Broiler-Type Hatching		60.1	59.1	98
Egg-Type Hatching		74.7	75.7	101
Forced Molt Layers, Oct 1	Percent			
Percent Being Molted		5.7	4.5	79
Percent with Molt Completed		22.5	22.7	101
Layers Sold for Slaughter During Sep	1,000	15,052	13,812	92
Layers Rendered, Died, Destroyed, Composted or Disappeared For Any Reason During Sep	1,000	4,432	5,011	113
Pullets Less Than 20 Weeks of Age, Oct 1	1,000	95,179	96,209	101
Pullets Added During Sep ²	1,000	21,688	21,550	99

¹ Revised.

² Pullet chicks one day old added to pullet flocks.

Layers and Eggs: Layers on Hand and Eggs Produced by Type, and Forced Molt, 30 Selected States, August-September, 2000-01 ¹

Item	Unit	2000	2001	2001 as % of 2000
Layers During Aug	1,000			
All Layers		305,491	311,247	102
Table Egg Type		252,219	257,703	102
Hatching Egg Type		53,272	53,544	101
Broiler-Type Hatching		50,606	50,884	101
Egg-Type Hatching		2,666	2,660	100
Eggs per 100 Layers During Aug	Number			
All Layers		2,181	2,166	99
Table Egg Type		2,248	2,232	99
Hatching Egg Type		1,860	1,853	100
Broiler-Type Hatching		1,836	1,832	100
Egg-Type Hatching		2,326	2,256	97
Eggs Produced During Aug	Million			
All Layers		6,662	6,743	101
Table Egg Type		5,671	5,751	101
Hatching Egg Type		991	992	100
Broiler-Type Hatching		929	932	100
Egg-Type Hatching		62	60	97
Layers on Sep 1	1,000			
All Layers		305,083	311,977	102
Table Egg Type		252,584	258,742	102
Hatching Egg Type		52,499	53,235	101
Broiler-Type Hatching		49,829	50,610	102
Egg-Type Hatching		2,670	2,625	98
Eggs per 100 Layers on Sep 1	Number			
All Layers		70.3	70.0	100
Table Egg Type		72.5	72.1	99
Hatching Egg Type		60.0	59.8	100
Broiler-Type Hatching		59.2	59.2	100
Egg-Type Hatching		75.1	71.1	95
Forced Molt Layers on Sep 1	Percent			
Percent Being Molted		4.6	4.5	98
Percent with Molt Completed		22.4	22.6	101
Layers Sold for Slaughter During Aug	1,000	16,344	15,493	95
Layers Rendered, Died, Destroyed, Composted or Disappeared For Any Reason During Aug	1,000	1,832	5,211	284
Pullets Less Than 20 Weeks of Age, Sep 1	1,000	91,762	90,816	99
Pullets Added During Aug ²	1,000	20,773	21,290	102

¹ The 30 States are listed in the table on page 8.

² Pullet chicks one day old added to pullet flocks.

Layers and Eggs: Layers on Hand and Eggs Produced by Type, and Forced Molt, 30 Selected States, September-October, 2000-01¹

Item	Unit	2000 ²	2001	2001 as % of 2000
Layers During Sep	1,000			
All Layers		306,151	313,837	103
Table Egg Type		254,047	260,300	102
Hatching Egg Type		52,104	53,537	103
Broiler-Type Hatching		49,481	50,943	103
Egg-Type Hatching		2,623	2,594	99
Eggs per 100 Layers During Sep	1,000			
All Layers		2,097	2,101	100
Table Egg Type		2,156	2,162	100
Hatching Egg Type		1,810	1,804	100
Broiler-Type Hatching		1,787	1,784	100
Egg-Type Hatching		2,249	2,197	98
Eggs Produced During Sep	Million			
All Layers		6,421	6,594	103
Table Egg Type		5,478	5,628	103
Hatching Egg Type		943	966	102
Broiler-Type Hatching		884	909	103
Egg-Type Hatching		59	57	97
Layers on Oct 1	1,000			
All Layers		307,188	315,634	103
Table Egg Type		255,496	261,846	102
Hatching Egg Type		51,692	53,788	104
Broiler-Type Hatching		49,125	51,234	104
Egg-Type Hatching		2,567	2,553	99
Eggs per 100 Layers on Oct 1	Number			
All Layers		69.3	69.9	101
Table Egg Type		71.1	72.0	101
Hatching Egg Type		60.2	59.8	99
Broiler-Type Hatching		59.5	59.0	99
Egg-Type Hatching		74.8	75.9	101
Forced Molt Layers, Oct 1	Percent			
Percent Being Molted		5.8	4.5	78
Percent with Molt Completed		22.3	22.7	102
Layers Sold for Slaughter During Sep	1,000	14,314	12,970	91
Layers Rendered, Died, Destroyed, Composted or Disappeared For Any Reason During Sep	1,000	4,253	4,727	111
Pullets Less Than 20 Weeks of Age, Oct 1	1,000	89,223	90,255	101
Pullets Added During Sep ³	1,000	20,939	20,566	98

¹ The 30 States are listed in the table on page 8.

² Revised.

³ Pullet chicks one day old added to pullet flocks.

**Layers and Eggs: Layers on Hand and Eggs Produced by State
and United States, During August 2000-01**

State	Table Egg Layers in Flocks 30,000 and Above		All Layers ¹		Eggs per 100 for All Layers ¹	
	2000	2001	2000	2001	2000	2001
	<i>1,000</i>	<i>1,000</i>	<i>1,000</i>	<i>1,000</i>	<i>Number</i>	<i>Number</i>
AL	2,935	2,798	10,457	10,455	1,913	1,932
AR	5,194	4,692	15,218	14,289	1,945	1,911
CA	23,036	22,359	23,624	22,906	2,243	2,196
CO	3,055	3,105	3,486	3,611	2,295	2,243
CT	3,075	2,994	3,209	3,050	2,400	2,325
FL	9,683	10,024	10,304	10,824	2,222	2,134
GA	11,743	11,270	20,730	20,511	2,055	2,077
HI	582	532	607	561	1,977	1,854
IL	3,259	3,130	3,531	3,379	2,266	2,338
IN	21,769	22,017	22,477	22,726	2,247	2,257
IA	26,867	32,085	27,649	32,869	2,279	2,248
ME	4,216	4,001	4,281	4,064	1,979	2,185
MD	2,549	2,880	2,875	3,146	2,157	2,352
MI	5,892	6,118	6,168	6,369	2,221	2,088
MN	11,878	11,225	12,593	11,930	2,208	2,263
MS	1,779	1,926	6,607	6,838	1,968	1,930
MO	4,668	4,761	5,961	6,111	2,356	2,095
NE	11,940	11,526	12,048	11,626	2,158	2,228
NY	3,776	3,676	3,978	3,985	2,413	2,409
NC	3,301	3,197	10,872	11,015	1,858	1,934
OH	30,434	29,127	31,104	29,756	2,276	2,208
OK	1,961	1,926	4,012	4,075	1,969	1,914
OR	2,782	2,805	2,956	2,978	2,267	2,317
PA	22,038	23,167	23,578	24,615	2,320	2,324
SC	4,219	4,743	5,225	5,772	2,124	2,148
SD	1,934	2,180	2,194	2,380	2,325	2,143
TX	12,762	14,257	17,004	18,554	2,129	2,097
VA	1,481	1,485	3,418	3,310	1,989	1,994
WA	4,690	4,912	4,810	4,983	2,295	2,288
WI	3,882	3,975	4,515	4,559	2,303	2,215
30 Sts	247,380	252,893	305,491	311,247	2,181	2,166
Oth Sts ²	14,467	14,982	20,262	20,957	2,181	2,219
US	261,847	267,875	325,753	332,204	2,181	2,169

¹ Includes all layers and eggs produced in both table egg and hatching egg flocks regardless of size.

² Estimates for individual States are not available.

**Layers and Eggs: Layers on Hand and Eggs Produced by State
and United States, During September 2000-01**

State	Table Egg Layers in Flocks 30,000 and Above		All Layers ¹		Eggs per 100 for All Layers ¹	
	2000	2001	2000	2001	2000	2001
	<i>1,000</i>	<i>1,000</i>	<i>1,000</i>	<i>1,000</i>	<i>Number</i>	<i>Number</i>
AL	3,009	2,843	10,316	10,392	1,871	1,867
AR	5,164	4,589	15,016	14,235	1,871	1,876
CA	23,202	22,603	23,812	23,135	2,150	2,122
CO	2,951	3,233	3,440	3,749	2,180	2,161
CT	3,030	3,001	3,164	3,047	2,244	2,225
FL	9,759	10,021	10,403	10,804	2,134	2,064
GA	11,615	11,629	20,359	21,124	1,979	1,979
HI	579	532	604	561	1,821	1,747
IL	3,241	3,157	3,479	3,399	2,213	2,295
IN	21,804	22,118	22,490	22,822	2,170	2,200
IA	27,609	32,767	28,405	33,569	2,181	2,187
ME	4,115	3,944	4,170	4,008	2,098	2,138
MD	2,649	2,902	2,941	3,155	2,142	2,250
MI	5,799	6,222	6,073	6,473	2,157	1,993
MN	11,803	11,380	12,518	12,080	2,133	2,202
MS	1,881	1,891	6,614	6,687	1,875	1,854
MO	4,934	4,929	6,235	6,318	2,197	2,058
NE	11,964	11,608	12,029	11,708	2,137	2,144
NY	3,872	3,746	4,086	4,078	2,276	2,281
NC	3,496	3,237	10,877	11,090	1,793	1,903
OH	30,030	29,783	30,671	30,383	2,158	2,182
OK	1,934	1,904	3,943	3,973	1,927	1,863
OR	2,871	2,807	3,046	2,985	2,134	2,211
PA	22,403	22,943	23,908	24,344	2,213	2,267
SC	4,049	4,619	5,067	5,651	2,171	2,124
SD	1,940	2,190	2,200	2,390	2,273	2,008
TX	13,405	14,493	17,490	18,763	2,041	2,004
VA	1,426	1,461	3,346	3,317	1,823	1,779
WA	4,656	4,961	4,776	5,032	2,102	2,206
WI	4,050	3,977	4,673	4,565	2,226	2,147
30 Sts	249,240	255,490	306,151	313,837	2,097	2,101
Oth Sts ²	14,522	14,780	20,086	20,689	2,156	2,146
US	263,762	270,270	326,237	334,526	2,101	2,104

¹ Includes all layers and eggs produced in both table egg and hatching egg flocks regardless of size.

² Estimates for individual States are not available.

**Egg Production: By Type, State, and United States,
August 2000-01**

State	Total Production		Table Eggs ¹		Hatching Eggs ¹	
	2000	2001	2000	2001	2000	2001
	<i>Million Eggs</i>	<i>Million Eggs</i>	<i>Million Eggs</i>	<i>Million Eggs</i>	<i>Million Eggs</i>	<i>Million Eggs</i>
AL	200	202	61	62	139	140
AR	296	273	115	103	181	170
CA	530	503				
CO	80	81				
CT	77	71				
FL	229	231	218	217	11	14
GA	426	426	251	252	175	174
HI	12.0	10.4	12.0	10.4	0	0
IL	80	79	76	75	4	4
IN	505	513	492	500	13	13
IA	630	739				
ME	85	89				
MD	62	74	57	69	5	5
MI	137	133				
MN	278	270	269	261	9	9
MS	130	132	41	42	89	90
MO	140	128				
NE	260	259	260	259	0	0
NY	96	96				
NC	202	213	80	76	122	137
OH	708	657				
OK	79	78	46	45	33	33
OR	67	69	65	67	2	2
PA	547	572	526	554	21	18
SC	111	124	93	105	18	19
SD	51	51	51	51	0	0
TX	362	389				
VA	68	66	34	35	34	31
WA	110	114				
WI	104	101				
30 Sts	6,662	6,743	5,671	5,751	991	992
Oth Sts ²	442	465	344	374	98	90
US	7,104	7,207	6,015	6,125	1,089	1,082

¹ Data by type of flock not shown for some States to avoid disclosing individual operations.

² Estimates for individual States are not available.

**Egg Production: By Type, State, and United States,
September 2000-01**

State	Total Production		Table Eggs ¹		Hatching Eggs ¹	
	2000	2001	2000	2001	2000	2001
	<i>Million Eggs</i>	<i>Million Eggs</i>	<i>Million Eggs</i>	<i>Million Eggs</i>	<i>Million Eggs</i>	<i>Million Eggs</i>
AL	193	194	61	59	132	135
AR	281	267	107	100	174	167
CA	512	491				
CO	75	81				
CT	71	68				
FL	222	223	211	209	11	14
GA	403	418	238	247	165	171
HI	11.0	9.8	11.0	9.8	0	0
IL	77	78	73	74	4	4
IN	488	502	476	490	12	12
IA	619	734				
ME	88	86				
MD	63	71	58	67	5	4
MI	131	129				
MN	267	266	258	257	9	9
MS	124	124	40	39	84	85
MO	137	130				
NE	257	251	257	251	0	0
NY	93	93				
NC	195	211	79	76	116	135
OH	662	663				
OK	76	74	44	43	32	31
OR	65	66	63	64	2	2
PA	529	552	510	535	19	17
SC	110	120	92	101	18	19
SD	50	48	50	48	0	0
TX	357	376				
VA	61	59	30	31	31	28
WA	100	111				
WI	104	98				
30 Sts	6,421	6,594	5,478	5,628	943	966
Oth Sts ²	433	444	342	357	91	86
US	6,854	7,037	5,820	5,985	1,034	1,052

¹ Data by type of flock not shown for some States to avoid disclosing individual operations.

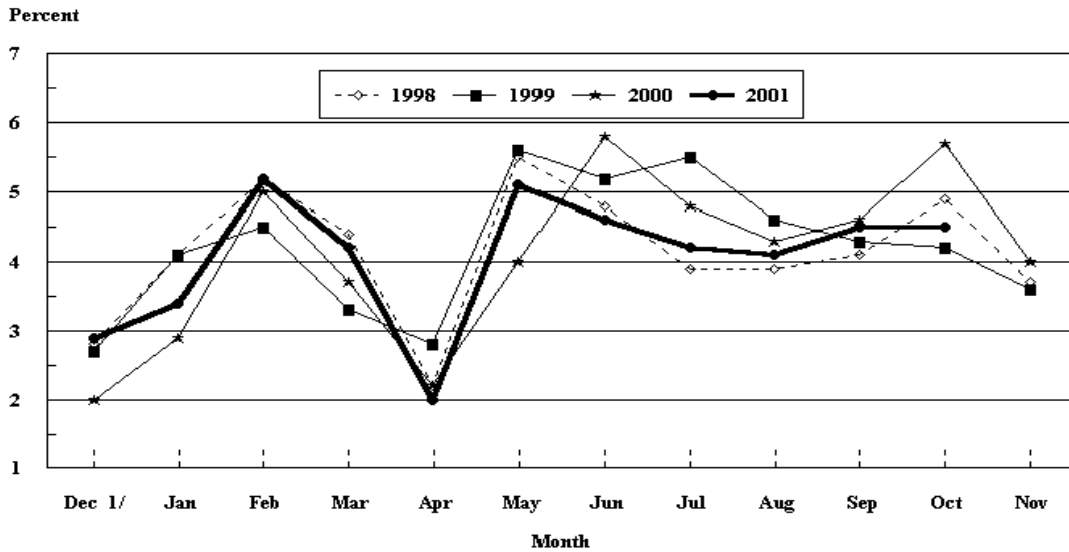
² Estimates for individual States are not available.

**Forced Molt: Percent of All Layers by Month,
United States, 2000-01¹**

Month	Percent Being Molted		Percent with Molt Completed	
	2000	2001	2000	2001
	<i>Percent</i>	<i>Percent</i>	<i>Percent</i>	<i>Percent</i>
Jan	2.9	3.4	22.9	24.1
Feb	5.0	5.1	21.4	22.4
Mar	3.7	4.2	22.1	23.1
Apr	2.2	2.0	22.5	23.1
May	4.0	5.1	22.3	20.9
Jun	5.8	4.6	20.5	23.3
Jul	4.8	4.5	21.9	23.5
Aug	4.3	4.2	21.8	23.1
Sep	4.6	4.5	22.6	22.7
Oct	5.7	4.5	22.5	22.7
Nov	4.0		23.2	
Dec	2.9		25.8	

¹ As of first of month.

**All Layers : United States
Percent Being Molted, 1998 - 2001
First of Month**



1/ Previous Year

**Forced Molt: Percent of All Layers by State
and United States, October 2000-01 ¹**

State	Percent Being Molted		Percent with Molt Completed	
	2000 <i>Percent</i>	2001 <i>Percent</i>	2000 <i>Percent</i>	2001 <i>Percent</i>
AL	0.5	1.5	11.5	4.0
AR	5.0	3.5	10.0	9.0
CA	6.0	8.5	38.5	33.0
CO	7.0	6.5	22.5	18.5
CT	5.5	10.0	12.0	12.5
FL	6.0	9.0	33.0	32.5
GA	7.0	5.0	21.5	13.5
HI	5.0	8.5	52.5	42.0
IL	2.0	4.5	44.0	21.0
IN	5.0	3.0	25.5	27.5
IA	5.5	3.5	27.0	31.5
ME	0.0	0.0	0.0	0.0
MD	6.5	9.0	35.0	20.5
MI	3.0	2.5	27.5	41.5
MN	4.5	4.0	35.0	30.5
MS	0.0	3.0	11.5	9.5
MO	8.0	6.5	9.5	18.5
NE	6.5	7.0	22.5	27.5
NY	1.5	0.5	4.0	0.5
NC	1.0	0.0	9.0	8.0
OH	12.0	3.5	16.0	21.5
OK	1.0	0.0	8.0	7.5
OR	6.0	6.5	36.5	31.5
PA	6.0	5.0	17.0	20.0
SC	3.5	2.0	33.5	27.5
SD	3.5	6.0	25.5	34.5
TX	7.5	3.5	17.5	26.5
VA	6.0	3.0	16.0	5.5
WA	9.0	9.5	41.5	46.5
WI	5.0	8.5	33.5	28.5
30 Sts	5.8	4.5	22.3	22.7
Oth Sts ²	4.3	5.4	25.9	22.4
US	5.7	4.5	22.5	22.7

¹ As of first of month.

² Estimates for individual States are not available.

**Hatchery Production: Eggs in Incubators, Chicks Hatched,
and Placements by Type, United States, September-October 2000-01**

Item	2000	2001	2001 as % of 2000
	<i>1,000</i>	<i>1,000</i>	<i>Percent</i>
Egg-Type			
Eggs in Incubators on Oct 1	30,797	32,330	105
Chicks Hatched During Sep	36,316	36,594	101
Chicks Hatched Jan thru Sep	326,681	350,813	107
Pullets Hatched During Sep for Intended Placements in Hatchery Supply Flocks	277	225	81
7-18 Month Earlier ¹	2,970	3,673	124
Broiler-Type			
Eggs in Incubators on Oct 1	585,831	608,018	104
Chicks Hatched During Sep	702,625	729,962	104
Chicks Hatched Jan thru Sep	6,667,152	6,696,769	100
Pullets Hatched During Sep for Intended Placements in Hatchery Supply Flocks	6,469	6,647	103
7-15 Months Earlier ²	63,630	60,557	95

¹ 2001 includes pullet chicks hatched Mar 2000 through Feb 2001.

² 2001 includes pullet chicks hatched Jun 2000 through Feb 2001.

**Egg-Type Eggs in Incubators: By Region and United States,
October 1, 2000-01**

Geographic Division	2000	2001	2001 as % of 2000
	<i>1,000</i>	<i>1,000</i>	<i>Percent</i>
North Atlantic	5,537	4,896	88
E North Central	6,548	5,996	92
W North Central	6,815	6,984	102
South Atlantic	3,327	4,437	133
South Central	3,771	4,987	132
West	4,799	5,030	105
US	30,797	32,330	105

Regional Listing:

North Atlantic = CT, ME, MA, NH, NJ, NY, PA, RI, VT.

E North Central = IL, IN, MI, OH, WI.

W North Central = IA, KS, MN, MO, NE, ND, SD.

South Atlantic = DE, FL, GA, MD, NC, SC, VA, WV.

South Central = AL, AR, KY, LA, MS, OK, TN, TX.

West = AK, AZ, CA, CO, HI, ID, MT, NM, NV, OR, UT, WA, WY.

**Egg-Type Chicks Hatched: By State and United States,
September 2000-01**

State	September			Jan-Sep		
	2000	2001	2001 as % of 2000	2000	2001	2001 as % of 2000
	<i>1,000</i>	<i>1,000</i>	<i>Percent</i>	<i>1,000</i>	<i>1,000</i>	<i>Percent</i>
AR	882	755	86	7,731	7,504	97
FL	796	1,030	129	8,863	8,675	98
GA	2,220	2,158	97	17,392	18,507	106
IN	6,792	4,079	60	53,068	56,429	106
IA	4,415	6,004	136	48,778	51,037	105
MN	1,540	1,438	93	15,798	14,659	93
PA	5,700	5,135	90	47,522	49,489	104
Oth Sts ¹	13,971	15,995	114	127,529	144,513	113
US	36,316	36,594	101	326,681	350,813	107

¹ Not published separately to avoid disclosing data for individual operations.

Egg-Type Chicks Hatched: By Month, United States, 1999-01

Month	By Months				Cumulative			
	1999	2000	2001	2001 as % of 2000	1999	2000	2001	2001 as % of 2000
	<i>1,000</i>	<i>1,000</i>	<i>1,000</i>	<i>Percent</i>	<i>1,000</i>	<i>1,000</i>	<i>1,000</i>	<i>Percent</i>
Jan	35,242	34,178	37,976	111	35,242	34,178	37,976	111
Feb	36,367	34,656	38,198	110	71,609	68,834	76,174	111
Mar	41,172	38,874	40,109	103	112,781	107,708	116,283	108
Apr	42,285	36,649	41,691	114	155,066	144,357	157,974	109
May	40,726	41,182	42,579	103	195,792	185,539	200,553	108
Jun	41,439	37,265	40,601	109	237,231	222,804	241,154	108
Jul	34,275	33,237	37,903	114	271,506	256,041	279,057	109
Aug	35,518	34,324	35,162	102	307,024	290,365	314,219	108
Sep	39,287	36,316	36,594	101	346,311	326,681	350,813	107
Oct	39,044	36,077			385,355	362,758		
Nov	32,802	32,290			418,157	395,048		
Dec	33,564	34,690			451,721	429,738		

**Intended Placements: Egg-Type Pullet Chicks for Hatchery Supply
Flocks by Month and Total, United States, 1999-01¹**

Month	Pullet Chicks Hatched			2001 as % of 2000	Cumulative Potential Placements Relative to Current Supply Flocks 7-18 Months Earlier ²		
	1999	2000	2001		2000	2001	2002
	<i>1,000</i>	<i>1,000</i>	<i>1,000</i>	<i>Percent</i>	<i>1,000</i>	<i>1,000</i>	<i>1,000</i>
Jan	166	212	*253	119	3,012	*3,129	*3,211
Feb	267	251	*232	92	2,945	*3,191	*3,258
Mar	257	286	*302	106	3,078	*3,090	*3,301
Apr	287	309	*311	101	2,981	*3,096	*3,293
May	283	343	*315	92	2,903	*3,057	
Jun	187	*235	*261	111	2,948	*3,103	
Jul	231	*293	*340	116	2,940	*3,173	
Aug	318	*217	260	120	2,986	*3,214	
Sep	227	*233	225	97	2,970	*3,195	
Oct	280	*241			2,999	*3,211	
Nov	262	*308			3,021	*3,213	
Dec	175	*245			3,081	*3,185	
Total	2,940	*3,173					

¹ Reported by leading breeders. Coverage may not be 100 percent. Includes expected pullet chicks from eggs sold during the preceding month at the rate of 125 pullet chicks per 30 dozen case of eggs.

² For September 2001, includes breeder pullet chicks hatched Mar 2000 through Feb 2001. The 7-18 months represent the first laying cycle. Molting and additional laying cycles will increase the cumulative potential placements.

* Revised October 22, 2001, refer to "Procedures and Reliability" on page 19 for further explanation.

**Broiler-Type Eggs in Incubators: By Region
and United States, October 1, 2000-01**

Geographic Division	2000	2001	2001 as % of 2000
	<i>1,000</i>	<i>1,000</i>	<i>Percent</i>
North Atlantic	11,057	12,135	110
E North Central	6,969	7,356	106
W North Central	18,545	19,156	103
South Atlantic	221,101	225,428	102
South Central	307,894	323,086	105
West	20,265	20,857	103
US	585,831	608,018	104

**Broiler-Type Chicks Hatched: By State
and United States, September 2000-01**

State	September			Jan-Sep		
	2000	2001	2001 as % of 2000	2000	2001	2001 as % of 2000
	<i>1,000</i>	<i>1,000</i>	<i>Percent</i>	<i>1,000</i>	<i>1,000</i>	<i>Percent</i>
AL	98,984	103,072	104	920,080	929,616	101
AR	104,416	106,147	102	975,778	963,254	99
DE	13,355	12,239	92	134,847	117,387	87
FL	9,016	8,139	90	86,496	78,559	91
GA	104,162	109,741	105	987,768	1,002,611	102
MD	27,235	30,471	112	271,628	276,557	102
MS	63,315	65,956	104	586,297	602,018	103
NC	59,801	59,167	99	578,621	566,498	98
PA	11,576	12,784	110	114,355	116,497	102
SC	15,939	16,666	105	149,529	151,169	101
TX	50,630	51,935	103	462,509	477,264	103
VA	22,416	23,323	104	213,365	216,103	101
CA TN & WV	36,894	38,031	103	358,052	360,984	101
15 Sts ¹	617,739	637,671	103	5,839,325	5,858,517	100
Oth Sts ²	84,886	92,291	109	827,827	838,252	101
US	702,625	729,962	104	6,667,152	6,696,769	100

¹ States in the weekly hatchery production estimating program.

² Not published separately to avoid disclosing data for individual operations.

Broiler-Type Chicks Hatched: By Month, United States, 1999-01

Month	By Months				Cumulative			
	1999	2000	2001	2001 as % of 2000	1999	2000	2001	2001 as % of 2000
	<i>1,000</i>	<i>1,000</i>	<i>1,000</i>	<i>Percent</i>	<i>1,000</i>	<i>1,000</i>	<i>1,000</i>	<i>Percent</i>
Jan	735,768	751,599	733,889	98	735,768	751,599	733,889	98
Feb	662,604	703,466	670,498	95	1,398,372	1,455,065	1,404,387	97
Mar	755,804	759,244	763,450	101	2,154,176	2,214,309	2,167,837	98
Apr	734,734	746,830	745,304	100	2,888,910	2,961,139	2,913,141	98
May	766,422	774,983	775,674	100	3,655,332	3,736,122	3,688,815	99
Jun	744,372	747,327	756,556	101	4,399,704	4,483,449	4,445,371	99
Jul	751,627	740,188	760,203	103	5,151,331	5,223,637	5,205,574	100
Aug	741,716	740,890	761,233	103	5,893,047	5,964,527	5,966,807	100
Sep	700,016	702,625	729,962	104	6,593,063	6,667,152	6,696,769	100
Oct	697,428	711,278			7,290,491	7,378,430		
Nov	676,762	675,038			7,967,253	8,053,468		
Dec	748,170	738,664			8,715,423	8,792,132		

**Intended Placements: Broiler-Type Pullet Chicks for Hatchery
Supply Flocks by Month and Total, 1999-01 ¹**

Month	Pullet Chicks Hatched			2001 as % of 2000	Cumulative Potential Placements Relative to Current Supply Flocks 7-15 Months Earlier ²		
	1999	2000	2001		2000	2001	2002
	<i>1,000</i>	<i>1,000</i>	<i>1,000</i>	<i>Percent</i>	<i>1,000</i>	<i>1,000</i>	<i>1,000</i>
US Place- ments							
Jan	7,059	6,861	6,685	97	64,139	63,304	60,750
Feb	6,882	7,001	6,748	96	64,344	62,493	60,382
Mar	7,284	7,310	6,752	92	64,697	62,797	60,771
Apr	7,038	6,764	6,398	95	64,663	62,267	60,989
May	7,736	7,435	7,117	96	64,725	62,100	
Jun	7,041	6,829	6,822	100	64,827	62,204	
Jul	7,088	6,310	6,326	100	64,542	61,323	
Aug	7,665	7,288	7,494	103	64,365	61,244	
Sep	6,870	6,469	6,647	103	63,630	60,557	
Oct	7,121	6,694			63,899	60,480	
Nov	6,984	7,105			63,575	60,568	
Dec	6,999	6,429			63,345	60,397	
Annual Total	85,767	82,495					
Total Place- ments ³							
Jan	8,679	8,069	7,615	94			
Feb	8,473	8,302	8,275	100			
Mar	8,863	8,798	8,325	95			
Apr	8,572	8,522	7,915	93			
May	9,463	8,917	8,647	97			
Jun	8,333	8,201	8,220	100			
Jul	8,342	7,621	7,687	101			
Aug	8,983	8,657	9,133	105			
Sep	8,044	8,042	8,047	100			
Oct	8,223	8,260					
Nov	8,220	8,702					
Dec	8,305	7,614					
Annual Total	102,500	99,705					

¹ Reported by leading breeders. Coverage may not be 100 percent. Includes expected pullet chicks from eggs sold during the preceding month at the rate of 125 pullet chicks per 30 dozen case of eggs.

² For Sep 2001, includes breeder pullet chicks hatched Jun 2000 through Feb 2001.

³ U.S. production of intended placements worldwide.

Procedures and Reliability

Data Sources: Primary data for the "**Chickens and Eggs**" report are from weekly and/or monthly questionnaires sent to producers. An attempt is made to collect information for layer and egg estimates from each known contractor and independent producer who has over 30,000 table egg layers. Coverage for operations with less than 30,000 table egg layers are estimated each month based on data reported in December. Approximately 900 contractors, independent egg producers, and started pullet operations are contacted each month. All known hatcheries, approximately 330, are contacted for information on a weekly and/or monthly basis.

Revisions: The previous month's estimates are subject to revision if late reports or corrected data indicates a different level. Additionally, revisions needed after the monthly report will be made at the end of the marketing year and published in the annual summaries of "**Chickens and Eggs Summary**" and "**Hatchery Production**".

Procedures and Reliability: Operations are mailed a questionnaire and given adequate time to respond by mail. Those that do not respond are phoned. Great care is exercised to ensure that all operations are accounted for during each survey period. However, there are usually missing reports that must be accounted for in the estimates.

Sound statistical methodology is employed to derive estimates from the reported data. All data are checked for unusual values. All operations' data are compared to their own past operating profiles and also to trends from other operations. Data for missing operations are estimated based on similar operations or historical data. Survey data are subject to non-sampling errors such as omissions and mistakes in reporting and in processing. While these errors cannot be measured directly, they are minimized by reviewing all data for consistency and reasonableness.

Egg-type chicks hatched are comprised of all chicks of egg-type domesticated breeds including males and chicks destined for hatchery supply flocks and research purposes. The relationship of chicks hatched to chicken inventory and poultry marketings is carefully monitored. The disposition of egg-type chicks hatched prior to placement into the laying flock can vary significantly, which can make comparisons to changes in layer inventory inconsistent over time.

Intended placement data reported by leading breeders include pullet chicks expected from eggs sold the preceding month. The breeders in this report account for a large percentage of replacement pullets for hatchery supply flocks. Production of replacement pullets by these breeders indicates the number of pullets available to hatchery supply flocks several months before the pullets will actually move into the flocks. "Hatchery Supply Flocks" include all generations of layers which could lay eggs to supply a hatchery. This includes the generations of parents, grandparents, great-grandparents, pedigree, etc. Also included are research flocks, vaccine flocks, and specific pathogen-free flocks. The broiler cumulative potential placements are a moving total of the intended placements 7-15 months earlier. The egg-type cumulative potential placements of 7-18 months represent the first laying cycle. Molting and additional laying cycles will increase the cumulative potential placements of egg-type hatching flocks. On October 22, 2001 the intended placements of egg-type hatchery supply flocks were revised based on updated reported data. Revisions to the intended placements from January 2000 through March 2001 changed the cumulative potential placements from August 2000 forward.

The next "Chickens and Eggs" report will be released at 3 p.m. ET on November 20, 2001.

The United States Department of Agriculture (USDA) prohibits discrimination in all its programs on the basis of race, color, national origin, gender, religion, age, disability, political beliefs, sexual orientation, and marital or family status. (Not all prohibited bases apply to all programs.) Persons with disabilities who require alternative means for communication of program information (braille, large print, audiotape, etc.) should contact the USDA's TARGET Center at 202-720-2600 (voice and TDD).

To file a complaint of discrimination, write USDA, Director, Office of Civil Rights, Room 326-W, Whitten Building, 1400 Independence Avenue, SW, Washington, D.C., 20250-9410, or call 202-720-5964 (voice or TDD). USDA is an equal opportunity provider and employer.

ACCESS TO REPORTS!!

For your convenience, there are several ways to obtain NASS reports, data products, and services:

INTERNET ACCESS

All NASS reports are available free of charge on the worldwide Internet. For access, connect to the Internet and go to the NASS Home Page at: <http://www.usda.gov/nass/>. Select "Today's Reports" or Publications and then Reports by Calendar or Publications and then Search, by Title or Subject.

E-MAIL SUBSCRIPTION

There are two options for subscribing via e-mail. All NASS reports are available by subscription free of charge direct to your e-mail address. 1) Starting with the NASS Home Page at <http://www.usda.gov/nass/>, click on **Publications**, then click on the **Subscribe by E-mail** button which takes you to the page describing e-mail delivery of reports. Finally, click on **Go to the Subscription Page** and follow the instructions. 2) If you do NOT have Internet access, send an e-mail message to: usda-reports@usda.mannlib.cornell.edu. In the body of the message type the word: **list**.

AUTOFAX ACCESS

NASSFax service is available for some reports from your fax machine. Please call 202-720-2000, using the handset attached to your fax. Respond to the voice prompts. Document 0411 is a list of available reports.

PRINTED REPORTS OR DATA PRODUCTS

CALL OUR TOLL-FREE ORDER DESK: 800-999-6779 (U.S. and Canada)
Other areas, please call 703-605-6220 FAX: 703-605-6900
(Visa, MasterCard, check, or money order acceptable for payment.)

ASSISTANCE

For **assistance** with general agricultural statistics or further information about NASS or its products or services, contact the **Agricultural Statistics Hotline** at **800-727-9540**, 7:30 a.m. to 4:00 p.m. ET, or e-mail: nass@nass.usda.gov.