

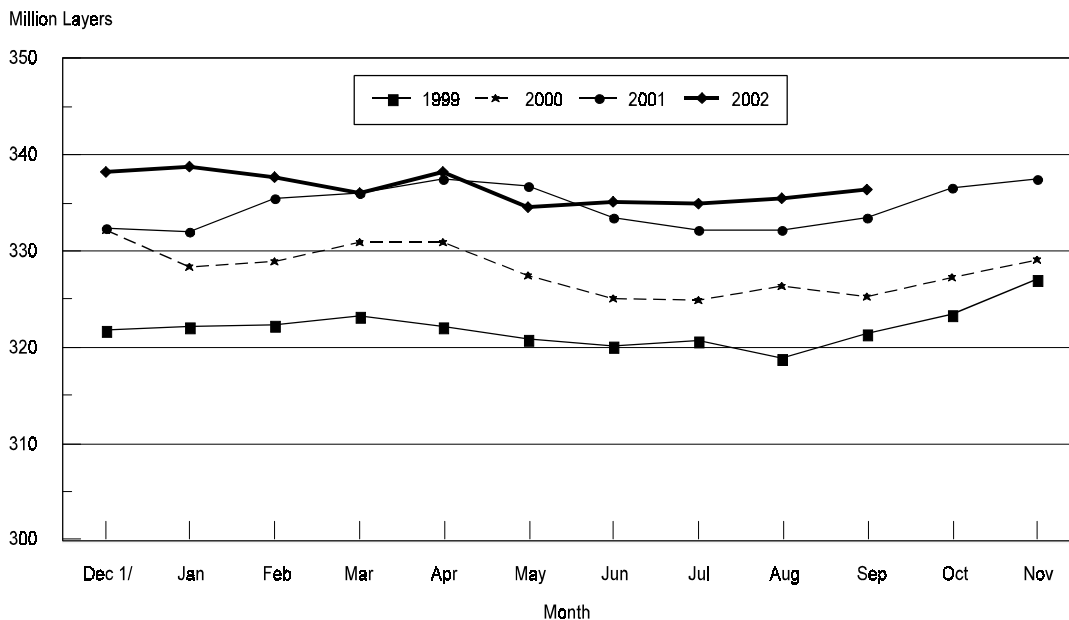
Released September 23, 2002, by the National Agricultural Statistics Service (NASS), Agricultural Statistics Board, U.S. Department of Agriculture. For information on "Chickens and Eggs" call Tom Kruchten at (202) 690-4870, for "Hatch" call Jody Roberts at (202) 690-8632, office hours 7:30 a.m. to 4:00 p.m. ET.

August Egg Production Up 2 Percent

U.S. egg production totaled 7.35 billion during August 2002, up 2 percent from last year. Production included 6.26 billion table eggs and 1.09 billion hatching eggs, of which 1.03 billion were broiler-type and 61.0 million were egg-type. The total number of layers during August 2002 averaged 336 million, up 1 percent from a year earlier. August egg production per 100 layers was 2,189 eggs, up 1 percent from the 2,170 eggs in August 2001.

August 2002 contained 22 weekdays, and five Saturdays, compared to August 2001 which contained 23 weekdays, and four Saturdays.

All Layers: 1st of Month United States, 1999 - 2002



1/ Previous Year

All layers in the U.S. on September 1, 2002, totaled 336 million, up 1 percent from a year ago. The 336 million layers consisted of 278 million layers producing table or commercial type eggs, 55.9 million layers producing broiler-type hatching eggs, and 2.51 million layers producing egg-type hatching eggs. Rate of lay per day on September 1, 2002, averaged 70.8 eggs per 100 layers, up 1 percent from a year ago.

Laying flocks in the 30 major egg producing States produced 6.89 billion eggs during August 2002, up 2 percent from a year ago. The average number of layers during August, at 315 million, was up 1 percent from a year ago.

Individual State estimates are available for the 30 major egg producing States. These States are listed on page 8 of this release and account for approximately 95 percent of the total U.S. egg production. Production for the other States are grouped into an "Other States" category and combined with the 30 States published individually to obtain a U.S. estimate. Individual State estimates for "Other States" are available annually in the "**Chickens and Eggs Summary**" report.

Egg-Type Chicks Hatched Up 3 Percent

Egg-type chicks hatched during August totaled 35.9 million, up 3 percent from August 2001. Eggs in incubators totaled 32.6 million on September 1, 2002, down 1 percent from a year ago.

Domestic placements of egg-type pullet chicks for future hatchery supply flocks by leading breeders totaled 221,000 during August 2002, down 12 percent from August 2001.

Broiler Hatch Up 1 Percent

The August 2002 hatch of broiler-type chicks, at 780 million, was up 1 percent from August of the previous year. There were 634 million eggs in incubators on September 1, 2002, down 1 percent from a year earlier.

Leading breeders placed 7.4 million broiler-type pullet chicks for future domestic hatchery supply flocks during August 2002, down 1 percent from August 2001.

**All Layers: Average Number on Hand During the Month,
United States, 1999-02**

Month	1999	2000	2001	2002
	<i>1,000 Layers</i>	<i>1,000 Layers</i>	<i>1,000 Layers</i>	<i>1,000 Layers</i>
Dec ¹	321,972	328,878	332,281	338,524
Jan	322,356	328,657	333,798	338,265
Feb	322,827	329,941	335,813	337,027
Mar	322,782	330,961	336,820	336,606
Apr	321,539	329,185	337,139	335,729
May	320,510	326,288	335,159	334,857
Jun	320,441	325,057	332,920	335,028
Jul	319,819	325,663	332,231	335,269
Aug	320,188	325,853	332,800	336,024
Sep	322,409	326,337	335,020	
Oct	325,287	328,278	337,085	
Nov	328,268	330,830	337,915	

¹ December preceding year.

**Eggs: Production During the Month by Type,
United States, 2001-02**

Month	Total Eggs		Table Eggs		Hatching Eggs	
	2001	2002	2001	2002	2001	2002
	<i>Million Eggs</i>	<i>Million Eggs</i>	<i>Million Eggs</i>	<i>Million Eggs</i>	<i>Million Eggs</i>	<i>Million Eggs</i>
Dec ¹	7,287	7,404	6,206	6,330	1,081	1,074
Jan	7,226	7,245	6,129	6,154	1,097	1,091
Feb	6,524	6,561	5,517	5,574	1,007	987
Mar	7,336	7,395	6,224	6,291	1,112	1,104
Apr	7,099	7,081	6,016	5,992	1,083	1,089
May	7,240	7,274	6,114	6,138	1,126	1,135
Jun	6,992	7,116	5,907	6,027	1,085	1,089
Jul	7,195	7,341	6,097	6,237	1,098	1,104
Aug	7,221	7,354	6,138	6,261	1,083	1,093
Sep	7,044		5,993		1,051	
Oct	7,347		6,264		1,083	
Nov	7,191		6,159		1,032	
During Year	85,702	64,771	72,764	55,004	12,938	9,766

¹ December preceding year.

**Layers and Eggs: Layers on Hand and Eggs Produced by Type,
and Forced Molt, United States, July-August 2001-02**

Item	Unit	2001	2002	2002 as % of 2001
Layers During Jul	1,000			
All Layers		332,231	335,269	101
Table Egg Type		273,087	275,777	101
Hatching Egg Type		59,144	59,492	101
Broiler-Type Hatching		56,330	56,900	101
Egg-Type Hatching		2,814	2,592	92
Eggs per 100 Layers During Jul	Number			
All Layers		2,166	2,190	101
Table Egg Type		2,233	2,262	101
Hatching Egg Type		1,856	1,856	100
Broiler-Type Hatching		1,832	1,831	100
Egg-Type Hatching		2,345	2,392	102
Eggs Produced During Jul	Million			
All Layers		7,195	7,341	102
Table Egg Type		6,097	6,237	102
Hatching Egg Type		1,098	1,104	101
Broiler-Type Hatching		1,032	1,042	101
Egg-Type Hatching		66	62	94
Layers on Aug 1	1,000			
All Layers		332,148	335,520	101
Table Egg Type		273,344	276,345	101
Hatching Egg Type		58,804	59,175	101
Broiler-Type Hatching		56,030	56,505	101
Egg-Type Hatching		2,774	2,670	96
Eggs per 100 Layers on Aug 1	Number			
All Layers		69.7	70.3	101
Table Egg Type		71.9	72.6	101
Hatching Egg Type		59.5	59.7	100
Broiler-Type Hatching		58.8	59.0	100
Egg-Type Hatching		73.6	75.2	102
Forced Molt Layers on Aug 1	Percent			
Percent Being Molted		4.2	4.6	110
Percent with Molt Completed		23.1	21.9	95
Layers Sold for Slaughter During Jul	1,000	16,196	15,278	94
Layers Rendered, Died, Destroyed, Composted or Disappeared For Any Reason During Jul	1,000	4,733	4,597	97
Pullets Less Than 20 Weeks of Age, Aug 1	1,000	99,445	93,969	94
Pullets Added During Jul ¹	1,000	23,029	22,065	96

¹ Pullet chicks one day old added to pullet flocks.

**Layers and Eggs: Layers on Hand and Eggs Produced by Type,
and Forced Molt, United States, August-September 2001-02**

Item	Unit	2001 ¹	2002	2002 as % of 2001
Layers During Aug	1,000			
All Layers		332,800	336,024	101
Table Egg Type		274,424	277,240	101
Hatching Egg Type		58,376	58,784	101
Broiler-Type Hatching		55,636	56,190	101
Egg-Type Hatching		2,740	2,594	95
Eggs per 100 Layers During Aug	Number			
All Layers		2,170	2,189	101
Table Egg Type		2,237	2,258	101
Hatching Egg Type		1,855	1,859	100
Broiler-Type Hatching		1,835	1,837	100
Egg-Type Hatching		2,263	2,352	104
Eggs Produced During Aug	Million			
All Layers		7,221	7,354	102
Table Egg Type		6,138	6,261	102
Hatching Egg Type		1,083	1,093	101
Broiler-Type Hatching		1,021	1,032	101
Egg-Type Hatching		62	61	98
Layers on Sep 1	1,000			
All Layers		333,417	336,488	101
Table Egg Type		275,482	278,115	101
Hatching Egg Type		57,935	58,373	101
Broiler-Type Hatching		55,234	55,863	101
Egg-Type Hatching		2,701	2,510	93
Eggs per 100 Layers on Sep 1	Number			
All Layers		70.2	70.8	101
Table Egg Type		72.3	73.1	101
Hatching Egg Type		60.0	60.1	100
Broiler-Type Hatching		59.4	59.3	100
Egg-Type Hatching		71.5	76.0	106
Forced Molt Layers, Sep 1	Percent			
Percent Being Molted		4.5	4.2	93
Percent with Molt Completed		22.7	23.5	104
Layers Sold for Slaughter During Aug	1,000	16,460	14,331	87
Layers Rendered, Died, Destroyed, Composted or Disappeared For Any Reason During Aug	1,000	5,405	4,313	80
Pullets Less Than 20 Weeks of Age, Sep 1	1,000	96,720	94,822	98
Pullets Added During Aug ²	1,000	22,306	21,575	97

¹ Revised.

² Pullet chicks one day old added to pullet flocks.

**Layers and Eggs: Layers on Hand and Eggs Produced by Type, and Forced
Molt, 30 Selected States, July-August, 2001-02 ¹**

Item	Unit	2001	2002	2002 as % of 2001
Layers During Jul	1,000			
All Layers		311,363	313,959	101
Table Egg Type		257,017	259,285	101
Hatching Egg Type		54,346	54,674	101
Broiler-Type Hatching		51,617	52,161	101
Egg-Type Hatching		2,729	2,513	92
Eggs per 100 Layers During Jul	Number			
All Layers		2,163	2,191	101
Table Egg Type		2,229	2,261	101
Hatching Egg Type		1,853	1,858	100
Broiler-Type Hatching		1,827	1,833	100
Egg-Type Hatching		2,345	2,388	102
Eggs Produced During Jul	Million			
All Layers		6,735	6,879	102
Table Egg Type		5,728	5,863	102
Hatching Egg Type		1,007	1,016	101
Broiler-Type Hatching		943	956	101
Egg-Type Hatching		64	60	94
Layers on Aug 1	1,000			
All Layers		311,131	314,257	101
Table Egg Type		257,191	259,806	101
Hatching Egg Type		53,940	54,451	101
Broiler-Type Hatching		51,250	51,858	101
Egg-Type Hatching		2,690	2,593	96
Eggs per 100 Layers on Aug 1	Number			
All Layers		69.6	70.4	101
Table Egg Type		71.8	72.6	101
Hatching Egg Type		59.4	59.8	101
Broiler-Type Hatching		58.7	59.0	101
Egg-Type Hatching		73.2	75.9	104
Forced Molt Layers on Aug 1	Percent			
Percent Being Molted		4.1	4.7	115
Percent with Molt Completed		23.1	21.5	93
Layers Sold for Slaughter During Jul	1,000	15,359	14,048	91
Layers Rendered, Died, Destroyed, Composted or Disappeared For Any Reason During Jul	1,000	4,549	4,405	97
Pullets Less Than 20 Weeks of Age, Aug 1	1,000	93,858	88,136	94
Pullets Added During Jul ²	1,000	21,708	20,687	95

¹ The 30 States are listed in the table on page 8.

² Pullet chicks one day old added to pullet flocks.

Layers and Eggs: Layers on Hand and Eggs Produced by Type, and Forced Molt, 30 Selected States, August-September, 2001-02 ¹

Item	Unit	2001 ²	2002	2002 as % of 2001
Layers During Aug	1,000			
All Layers		311,844	314,737	101
Table Egg Type		258,250	260,660	101
Hatching Egg Type		53,594	54,077	101
Broiler-Type Hatching		50,934	51,568	101
Egg-Type Hatching		2,660	2,509	94
Eggs per 100 Layers During Aug	1,000			
All Layers		2,166	2,190	101
Table Egg Type		2,232	2,258	101
Hatching Egg Type		1,853	1,862	100
Broiler-Type Hatching		1,832	1,838	100
Egg-Type Hatching		2,256	2,352	104
Eggs Produced During Aug	Million			
All Layers		6,756	6,893	102
Table Egg Type		5,763	5,886	102
Hatching Egg Type		993	1,007	101
Broiler-Type Hatching		933	948	102
Egg-Type Hatching		60	59	98
Layers on Sep 1	1,000			
All Layers		312,527	315,182	101
Table Egg Type		259,292	261,496	101
Hatching Egg Type		53,235	53,686	101
Broiler-Type Hatching		50,610	51,269	101
Egg-Type Hatching		2,625	2,417	92
Eggs per 100 Layers on Sep 1	Number			
All Layers		70.0	70.8	101
Table Egg Type		72.1	73.0	101
Hatching Egg Type		59.8	60.1	101
Broiler-Type Hatching		59.2	59.4	100
Egg-Type Hatching		71.1	75.9	107
Forced Molt Layers, Sep 1	Percent			
Percent Being Molted		4.5	4.2	93
Percent with Molt Completed		22.6	23.3	103
Layers Sold for Slaughter During Aug	1,000	15,513	13,002	84
Layers Rendered, Died, Destroyed, Composted or Disappeared For Any Reason During Aug	1,000	5,217	4,038	77
Pullets Less Than 20 Weeks of Age, Sep 1	1,000	90,831	88,727	98
Pullets Added During Aug ³	1,000	21,329	20,267	95

¹ The 30 States are listed in the table on page 8.

² Revised.

³ Pullet chicks one day old added to pullet flocks.

**Layers and Eggs: Layers on Hand and Eggs Produced by State
and United States, During July 2001-02**

State	Table Egg Layers in Flocks 30,000 and Above		All Layers ¹		Eggs per 100 for All Layers ¹	
	2001	2002	2001	2002	2001	2002
	<i>1,000</i>	<i>1,000</i>	<i>1,000</i>	<i>1,000</i>	<i>Number</i>	<i>Number</i>
AL	2,744	2,147	10,632	9,972	1,909	1,875
AR	4,735	4,427	14,652	14,567	1,931	1,936
CA	22,506	22,842	23,114	23,411	2,185	2,204
CO	3,050	3,363	3,544	3,863	2,257	2,330
CT	3,035	3,030	3,112	3,090	2,410	2,330
FL	9,840	9,602	10,645	10,312	2,132	2,133
GA	11,198	10,508	20,458	20,124	2,033	1,973
HI	535	488	564	540	1,933	1,852
IL	2,964	2,958	3,212	3,190	2,428	2,132
IN	22,178	21,948	22,910	22,587	2,230	2,254
IA	31,791	36,628	32,597	37,478	2,261	2,289
ME	4,126	4,172	4,190	4,230	2,358	2,270
MD	2,935	2,935	3,236	3,139	2,225	2,389
MI	6,119	6,564	6,370	6,815	2,214	2,274
MN	11,190	10,740	11,900	11,478	2,185	2,291
MS	1,723	1,757	6,673	6,794	1,948	2,016
MO	5,390	5,570	6,698	6,990	2,120	2,303
NE	11,430	11,522	11,530	11,622	2,160	2,246
NY	3,827	3,611	4,129	3,816	2,398	2,385
NC	3,080	3,217	10,930	11,029	1,903	1,922
OH	29,411	29,979	30,049	30,489	2,193	2,237
OK	1,912	1,894	4,081	4,117	1,911	1,919
OR	2,787	2,459	2,967	2,650	2,393	2,264
PA	22,805	22,057	24,262	23,457	2,312	2,353
SC	4,707	4,256	5,697	5,298	2,159	2,171
SD	2,143	2,120	2,343	2,320	1,963	1,983
TX	14,024	13,827	18,348	18,199	2,131	2,225
VA	1,366	1,215	3,187	2,988	2,040	1,975
WA	4,767	5,161	4,842	5,236	2,295	2,330
WI	3,889	3,556	4,491	4,158	2,316	2,381
30 Sts	252,207	254,553	311,363	313,959	2,163	2,191
Oth Sts ²	14,877	15,320	20,868	21,310	2,209	2,168
US	267,084	269,873	332,231	335,269	2,166	2,190

¹ Includes all layers and eggs produced in both table egg and hatching egg flocks regardless of size.

² Estimates for individual States are not available.

**Layers and Eggs: Layers on Hand and Eggs Produced by State
and United States, During August 2001-02**

State	Table Egg Layers in Flocks 30,000 and Above		All Layers ¹		Eggs per 100 for All Layers ¹	
	2001	2002	2001	2002	2001	2002
	<i>1,000</i>	<i>1,000</i>	<i>1,000</i>	<i>1,000</i>	<i>Number</i>	<i>Number</i>
AL	2,798	2,282	10,455	10,023	1,932	1,886
AR	4,692	4,315	14,289	14,396	1,911	1,945
CA	22,359	22,687	22,906	23,255	2,196	2,206
CO	3,105	3,456	3,611	3,933	2,243	2,339
CT	2,994	3,030	3,050	3,090	2,325	2,233
FL	10,024	9,789	10,824	10,508	2,134	2,170
GA	11,270	10,604	20,511	20,005	2,077	2,039
HI	532	488	561	538	1,854	1,784
IL	3,130	2,957	3,379	3,196	2,338	2,222
IN	22,017	22,144	22,726	22,823	2,257	2,287
IA	32,085	36,840	32,869	37,657	2,248	2,292
ME	4,001	4,164	4,064	4,221	2,185	2,180
MD	2,880	2,913	3,146	3,098	2,352	2,421
MI	6,118	6,542	6,369	6,793	2,088	2,296
MN	11,225	10,653	11,930	11,396	2,263	2,264
MS	1,926	1,746	6,838	6,900	1,930	2,014
MO	5,308	5,558	6,658	7,002	2,103	2,314
NE	11,526	11,537	11,626	11,637	2,228	2,243
NY	3,676	3,694	3,985	3,916	2,409	2,349
NC	3,197	3,390	11,065	11,001	1,934	1,927
OH	29,127	30,099	29,756	30,611	2,208	2,238
OK	1,926	1,864	4,075	4,046	1,914	1,903
OR	2,805	2,523	2,978	2,714	2,317	2,321
PA	23,167	22,377	24,615	23,717	2,324	2,319
SC	4,743	4,326	5,772	5,359	2,148	2,109
SD	2,180	2,131	2,380	2,331	2,143	1,973
TX	14,257	13,913	18,554	18,276	2,097	2,172
VA	1,485	1,225	3,310	2,937	1,994	1,975
WA	4,912	5,122	4,983	5,195	2,288	2,214
WI	3,975	3,561	4,559	4,163	2,215	2,330
30 Sts	253,440	255,930	311,844	314,737	2,166	2,190
Oth Sts ²	14,981	15,408	20,956	21,287	2,224	2,166
US	268,421	271,338	332,800	336,024	2,170	2,189

¹ Includes all layers and eggs produced in both table egg and hatching egg flocks regardless of size.

² Estimates for individual States are not available.

**Egg Production: By Type, State, and United States,
July 2001-02**

State	Total Production		Table Eggs ¹		Hatching Eggs ¹	
	2001	2002	2001	2002	2001	2002
	<i>Million Eggs</i>	<i>Million Eggs</i>	<i>Million Eggs</i>	<i>Million Eggs</i>	<i>Million Eggs</i>	<i>Million Eggs</i>
AL	203	187	61	45	142	142
AR	283	282	106	99	177	183
CA	505	516				
CO	80	90				
CT	75	72				
FL	227	220	212	208	15	12
GA	416	397	240	216	176	181
HI	10.9	10.0	10.9	10.0	0	0
IL	78	68	74	65	4	3
IN	511	509	498	498	13	11
IA	737	858				
ME	99	96				
MD	72	75	67	72	5	3
MI	141	155				
MN	260	263	251	253	9	10
MS	130	137	40	42	90	95
MO	142	161				
NE	249	261	249	261	0	0
NY	99	91				
NC	208	212	73	77	135	135
OH	659	682				
OK	78	79	44	44	34	35
OR	71	60	69	58	2	2
PA	561	552	542	535	19	17
SC	123	115	104	96	19	19
SD	46	46	46	46	0	0
TX	391	405				
VA	65	59	33	28	32	31
WA	111	122				
WI	104	99				
30 Sts	6,735	6,879	5,728	5,863	1,007	1,016
Oth Sts ²	461	462	369	374	91	88
US	7,195	7,341	6,097	6,237	1,098	1,104

¹ Data by type of flock not shown for some States to avoid disclosing individual operations.

² Estimates for individual States are not available.

**Egg Production: By Type, State, and United States,
August 2001-02**

State	Total Production		Table Eggs ¹		Hatching Eggs ¹	
	2001	2002	2001	2002	2001	2002
	<i>Million Eggs</i>	<i>Million Eggs</i>	<i>Million Eggs</i>	<i>Million Eggs</i>	<i>Million Eggs</i>	<i>Million Eggs</i>
AL	202	189	62	48	140	141
AR	273	280	103	97	170	183
CA	503	513				
CO	81	92				
CT	71	69				
FL	231	228	217	215	14	13
GA	426	408	252	230	174	178
HI	10.4	9.6	10.4	9.6	0	0
IL	79	71	75	67	4	4
IN	513	522	500	510	13	12
IA	739	863				
ME	89	92				
MD	74	75	69	72	5	3
MI	133	156				
MN	270	258	261	248	9	10
MS	132	139	42	42	90	97
MO	140	162				
NE	259	261	259	261	0	0
NY	96	92				
NC	214	212	76	81	138	131
OH	657	685				
OK	78	77	45	43	33	34
OR	69	63	67	61	2	2
PA	572	550	554	534	18	16
SC	124	113	105	95	19	18
SD	51	46	51	46	0	0
TX	389	397				
VA	66	58	35	29	31	29
WA	114	115				
WI	101	97				
30 Sts	6,756	6,893	5,763	5,886	993	1,007
Oth Sts ²	466	461	375	375	90	86
US	7,221	7,354	6,138	6,261	1,083	1,093

¹ Data by type of flock not shown for some States to avoid disclosing individual operations.

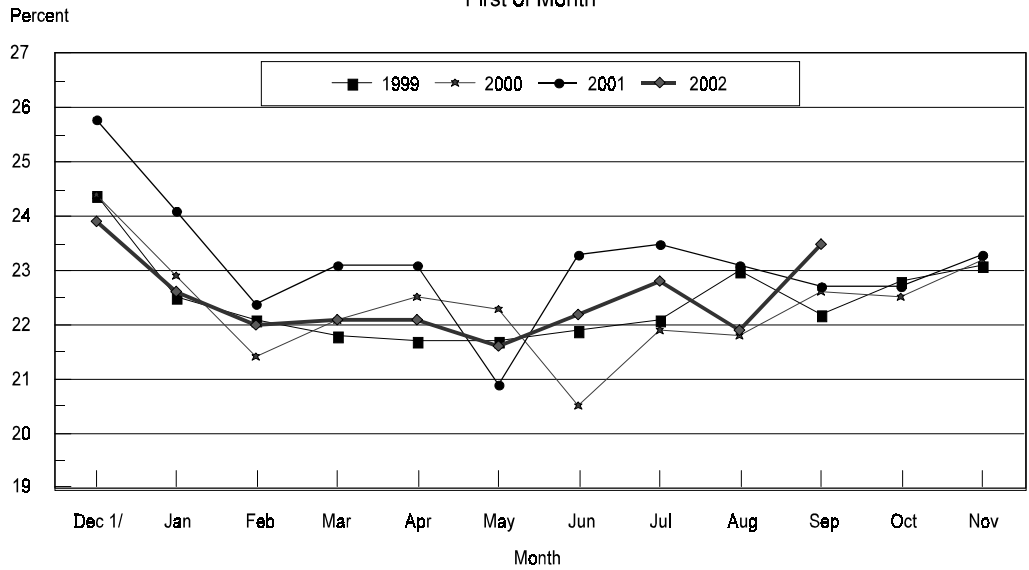
² Estimates for individual States are not available.

**Forced Molt: Percent of All Layers by Month,
United States, 2001-02 ¹**

Month	Percent Being Molted		Percent with Molt Completed	
	2001	2002	2001	2002
	<i>Percent</i>	<i>Percent</i>	<i>Percent</i>	<i>Percent</i>
Jan	3.4	4.1	24.1	22.6
Feb	5.1	4.6	22.3	22.0
Mar	4.2	3.7	23.1	22.1
Apr	2.0	3.6	23.1	22.1
May	5.1	5.7	20.9	21.5
Jun	4.6	4.2	23.3	22.2
Jul	4.5	3.7	23.4	22.8
Aug	4.2	4.6	23.1	21.9
Sep	4.5	4.2	22.7	23.5
Oct	4.4		22.8	
Nov	3.1		23.2	
Dec	2.7		23.9	

¹ As of first of month.

**All Layers: United States
Percent Molt Completed, 1999 - 2002
First of Month**



1/ Previous year

**Forced Molt: Percent of All Layers by State
and United States, September 2001-02 ¹**

State	Percent Being Molted		Percent with Molt Completed	
	2001	2002	2001	2002
	<i>Percent</i>	<i>Percent</i>	<i>Percent</i>	<i>Percent</i>
AL	1.5	7.0	5.5	12.5
AR	2.0	2.0	7.0	10.0
CA	5.0	5.5	33.0	28.5
CO	3.5	3.0	18.5	21.5
CT	3.5	3.0	9.5	3.5
FL	7.0	4.5	36.0	30.5
GA	4.5	4.0	15.5	15.0
HI	8.0	13.0	36.0	42.5
IL	5.5	2.5	18.0	48.5
IN	4.0	2.5	30.5	32.0
IA	4.0	3.5	29.5	31.5
ME	0.0	0.0	0.0	2.0
MD	11.0	5.0	14.5	53.5
MI	7.0	6.0	40.5	28.5
MN	4.0	3.5	31.0	29.0
MS	2.0	1.0	11.5	11.5
MO	6.0	2.0	27.5	25.0
NE	5.5	7.0	27.0	25.5
NY	0.5	3.0	0.5	6.5
NC	0.5	2.0	9.5	9.0
OH	5.5	8.0	21.0	19.5
OK	0.0	0.5	7.0	6.5
OR	6.5	3.0	33.5	29.5
PA	5.0	1.5	20.0	16.5
SC	5.0	5.5	25.5	32.0
SD	5.0	6.0	30.5	29.5
TX	7.0	4.5	20.5	24.5
VA	3.0	6.5	18.0	11.5
WA	11.0	12.0	41.5	47.0
WI	5.5	3.0	26.0	37.0
30 Sts	4.5	4.2	22.6	23.3
Oth Sts ²	4.6	4.0	23.0	26.3
US	4.5	4.2	22.7	23.5

¹ As of first of month.

² Estimates for individual States are not available.

**Hatchery Production: Eggs in Incubators, Chicks Hatched,
and Placements by Type, United States, August-September 2001-02**

Item	2001	2002	2002 as % of 2001
	<i>1,000</i>	<i>1,000</i>	<i>Percent</i>
Egg-Type			
Eggs in Incubators on Sep 1	33,108	32,617	99
Chicks Hatched During Aug	34,978	35,877	103
Chicks Hatched Jan thru Aug	315,343	290,119	92
Pullets Hatched During Aug for Intended Placements in Hatchery Supply Flocks	251	221	88
7-18 Month Earlier ¹	3,197	3,040	95
Broiler-Type			
Eggs in Incubators on Sep 1	637,879	633,617	99
Chicks Hatched During Aug	771,550	779,803	101
Chicks Hatched Jan thru Aug	6,048,368	6,169,505	102
Pullets Hatched During Aug for Intended Placements in Hatchery Supply Flocks	7,494	7,449	99
7-15 Months Earlier ²	61,244	61,608	101

¹ 2002 includes pullet chicks hatched Feb 2001 through Jan 2002.

² 2002 includes pullet chicks hatched May 2001 through Jan 2002.

**Egg-Type Eggs in Incubators: By Region and United States,
September 1, 2001-02**

Geographic Division	2001	2002	2002 as % of 2001
	<i>1,000</i>	<i>1,000</i>	<i>Percent</i>
North Atlantic	5,139	4,945	96
E North Central	5,419	6,911	128
W North Central	6,611	6,804	103
South Atlantic	5,356	4,558	85
South Central	5,484	5,040	92
West	5,099	4,359	85
US	33,108	32,617	99

Regional Listing:

North Atlantic = CT, ME, MA, NH, NJ, NY, PA, RI, VT.

E North Central = IL, IN, MI, OH, WI.

W North Central = IA, KS, MN, MO, NE, ND, SD.

South Atlantic = DE, FL, GA, MD, NC, SC, VA, WV.

South Central = AL, AR, KY, LA, MS, OK, TN, TX.

West = AK, AZ, CA, CO, HI, ID, MT, NM, NV, OR, UT, WA, WY.

**Egg-Type Chicks Hatched: By State and United States,
August 2001-02**

State	August			Jan-Aug		
	2001	2002	2002 as % of 2001	2001	2002	2002 as % of 2001
	<i>1,000</i>	<i>1,000</i>	<i>Percent</i>	<i>1,000</i>	<i>1,000</i>	<i>Percent</i>
AR	855	1,035	121	6,749	6,461	96
FL	891	571	64	7,385	4,485	61
GA	1,523	2,258	148	16,947	17,582	104
IN	4,016	4,941	123	52,621	39,955	76
IA	5,808	5,857	101	43,699	43,172	99
MN	1,468	1,730	118	13,221	11,869	90
PA	5,351	4,661	87	44,354	35,463	80
Oth Sts ¹	15,066	14,824	98	130,367	131,132	101
US	34,978	35,877	103	315,343	290,119	92

¹ Not published separately to avoid disclosing data for individual operations.

Egg-Type Chicks Hatched: By Month, United States, 2000-02

Month	By Months				Cumulative			
	2000	2001	2002	2002 as % of 2001	2000	2001	2002	2002 as % of 2001
	<i>1,000</i>	<i>1,000</i>	<i>1,000</i>	<i>Percent</i>	<i>1,000</i>	<i>1,000</i>	<i>1,000</i>	<i>Percent</i>
Jan	34,181	36,706	35,533	97	34,181	36,706	35,533	97
Feb	34,659	37,816	34,326	91	68,840	74,522	69,859	94
Mar	38,877	40,993	36,717	90	107,717	115,515	106,576	92
Apr	36,653	42,768	38,212	89	144,370	158,283	144,788	91
May	41,185	42,636	38,944	91	185,555	200,919	183,732	91
Jun	37,268	40,806	35,292	86	222,823	241,725	219,024	91
Jul	33,240	38,640	35,218	91	256,063	280,365	254,242	91
Aug	34,328	34,978	35,877	103	290,391	315,343	290,119	92
Sep	36,325	36,916			326,716	352,259		
Oct	36,080	35,816			362,796	388,075		
Nov	32,438	32,081			395,234	420,156		
Dec	35,178	31,657			430,412	451,813		

**Intended Placements: Egg-Type Pullet Chicks for Hatchery Supply
Flocks by Month and Total, United States, 2000-02¹**

Month	Pullet Chicks Hatched			2002 as % of 2001	Cumulative Potential Placements Relative to Current Supply Flocks 7-18 Months Earlier ²		
	2000	2001	2002		2001	2002	2003
	<i>1,000</i>	<i>1,000</i>	<i>1,000</i>	<i>Percent</i>	<i>1,000</i>	<i>1,000</i>	<i>1,000</i>
Jan	212	236	228	97	3,129	3,158	2,974
Feb	251	214	247	115	3,191	3,205	2,916
Mar	286	284	237	83	3,090	3,239	2,886
Apr	309	311	295	95	3,096	3,225	
May	343	315	319	101	3,057	3,134	
Jun	235	261	221	85	3,103	3,087	
Jul	293	340	282	83	3,173	3,048	
Aug	217	251	221	88	3,197	3,040	
Sep	233	219			3,160	3,073	
Oct	241	150			3,158	3,026	
Nov	308	261			3,160	3,010	
Dec	245	206			3,132	3,014	
Total	3,173	3,048					

¹ Reported by leading breeders. Coverage may not be 100 percent. Includes expected pullet chicks from eggs sold during the preceding month at the rate of 125 pullet chicks per 30 dozen case of eggs.

² For August 2002, includes breeder pullet chicks hatched Feb 2001 through Jan 2002. The 7-18 months represent the first laying cycle. Molting and additional laying cycles will increase the cumulative potential placements.

**Broiler-Type Eggs in Incubators: By Region
and United States, September 1, 2001-02**

Geographic Division	2001	2002	2002 as % of 2001
	<i>1,000</i>	<i>1,000</i>	<i>Percent</i>
North Atlantic	12,360	11,502	93
E North Central	7,538	7,636	101
W North Central	21,127	20,404	97
South Atlantic	236,948	235,325	99
South Central	336,985	335,394	100
West	22,921	23,356	102
US	637,879	633,617	99

**Broiler-Type Chicks Hatched: By State
and United States, August 2001-02**

State	August			Jan-Aug		
	2001	2002	2002 as % of 2001	2001	2002	2002 as % of 2001
	<i>1,000</i>	<i>1,000</i>	<i>Percent</i>	<i>1,000</i>	<i>1,000</i>	<i>Percent</i>
AL	108,188	108,485	100	826,562	846,302	102
AR	109,905	109,920	100	857,107	874,047	102
DE	12,383	13,101	106	105,148	101,576	97
FL	8,599	8,273	96	70,420	67,261	96
GA	112,894	115,849	103	892,948	908,467	102
KY	23,668	24,552	104	178,949	189,688	106
MD	35,128	35,956	102	271,692	278,538	103
MS	68,791	70,527	103	536,438	551,536	103
NC	66,404	67,441	102	529,253	544,139	103
OK	22,167	24,419	110	176,084	185,966	106
PA	13,430	13,218	98	103,683	104,533	101
SC	16,912	16,662	99	134,503	131,414	98
TX	51,994	53,967	104	425,186	442,700	104
VA	24,270	22,843	94	192,918	187,164	97
CA, LA, MO, TN, & WV	73,567	72,263	98	573,544	581,438	101
19 Sts ¹	748,300	757,476	101	5,874,435	5,994,769	102
Oth Sts ²	23,250	22,327	96	173,933	174,736	100
US	771,550	779,803	101	6,048,368	6,169,505	102

¹ States in the weekly hatchery production estimating program.

² Not published separately to avoid disclosing data for individual operations.

Broiler-Type Chicks Hatched: By Month, United States, 2000-02

Month	By Months				Cumulative			
	2000	2001	2002	2002 as % of 2001	2000	2001	2002	2002 as % of 2001
	<i>1,000</i>	<i>1,000</i>	<i>1,000</i>	<i>Percent</i>	<i>1,000</i>	<i>1,000</i>	<i>1,000</i>	<i>Percent</i>
Jan	753,931	745,093	775,669	104	753,931	745,093	775,669	104
Feb	706,216	680,823	702,576	103	1,460,147	1,425,916	1,478,245	104
Mar	761,764	773,760	790,342	102	2,221,911	2,199,676	2,268,587	103
Apr	749,106	755,455	764,982	101	2,971,017	2,955,131	3,033,569	103
May	777,624	785,704	798,315	102	3,748,641	3,740,835	3,831,884	102
Jun	750,528	766,534	776,397	101	4,499,169	4,507,369	4,608,281	102
Jul	742,823	769,449	781,421	102	5,241,992	5,276,818	5,389,702	102
Aug	743,979	771,550	779,803	101	5,985,971	6,048,368	6,169,505	102
Sep	704,944	738,355			6,690,915	6,786,723		
Oct	721,249	747,495			7,412,164	7,534,218		
Nov	684,995	702,607			8,097,159	8,236,825		
Dec	749,026	769,731			8,846,185	9,006,556		

**Intended Placements: Broiler-Type Pullet Chicks for Hatchery
Supply Flocks by Month and Total, 2000-02 ¹**

Month	Pullet Chicks Hatched			2002 as % of 2001	Cumulative Potential Placements Relative to Current Supply Flocks 7-15 Months Earlier ²		
	2000	2001	2002		2001	2002	2003
	<i>1,000</i>	<i>1,000</i>	<i>1,000</i>	<i>Percent</i>	<i>1,000</i>	<i>1,000</i>	<i>1,000</i>
US Place- ments							
Jan	6,861	6,685	6,660	100	63,304	60,750	62,869
Feb	7,001	6,748	7,275	108	62,493	60,382	62,767
Mar	7,310	6,752	6,775	100	62,797	60,771	62,955
Apr	6,764	6,398	6,814	107	62,267	60,989	
May	7,435	7,117	7,597	107	62,100	61,008	
Jun	6,829	6,822	7,206	106	62,204	61,521	
Jul	6,310	6,326	6,602	104	61,323	61,346	
Aug	7,288	7,494	7,449	99	61,244	61,608	
Sep	6,469	6,647			60,557	61,766	
Oct	6,694	6,704			60,480	61,719	
Nov	7,105	7,261			60,568	62,207	
Dec	6,429	6,577			60,397	62,310	
Annual Total	82,495	81,531					
Total Place- ments ³							
Jan	8,069	7,615	8,084	106			
Feb	8,302	8,275	8,491	103			
Mar	8,798	8,325	7,997	96			
Apr	8,522	7,915	8,119	103			
May	8,917	8,647	8,982	104			
Jun	8,201	8,220	8,802	107			
Jul	7,621	7,687	8,083	105			
Aug	8,657	9,133	8,913	98			
Sep	8,042	8,047					
Oct	8,260	7,848					
Nov	8,702	9,017					
Dec	7,614	8,119					
Annual Total	99,705	98,848					

¹ Reported by leading breeders. Coverage may not be 100 percent. Includes expected pullet chicks from eggs sold during the preceding month at the rate of 125 pullet chicks per 30 dozen case of eggs.

² For Aug 2002, includes breeder pullet chicks hatched May 2001 through Jan 2002.

³ U.S. production of intended placements worldwide.

Procedures and Reliability

Data Sources: Primary data for the "**Chickens and Eggs**" report are from weekly and/or monthly questionnaires sent to producers. An attempt is made to collect information for layer and egg estimates from each known contractor and independent producer who has over 30,000 table egg layers. Coverage for operations with less than 30,000 table egg layers are estimated each month based on data reported in December. Approximately 900 contractors, independent egg producers, and started pullet operations are contacted each month. All known hatcheries, approximately 330, are contacted for information on a weekly and/or monthly basis.

Revisions: The previous month's estimates are subject to revision if late reports or corrected data indicates a different level. Additionally, revisions needed after the monthly report will be made at the end of the marketing year and published in the annual summaries of "**Chickens and Eggs Summary**" and "**Hatchery Production**".

Procedures and Reliability: Operations are mailed a questionnaire and given adequate time to respond by mail. Those that do not respond are phoned. Great care is exercised to ensure that all operations are accounted for during each survey period. However, there are usually missing reports that must be accounted for in the estimates.

Sound statistical methodology is employed to derive estimates from the reported data. All data are checked for unusual values. All operations' data are compared to their own past operating profiles and also to trends from other operations. Data for missing operations are estimated based on similar operations or historical data. Survey data are subject to non-sampling errors such as omissions and mistakes in reporting and in processing. While these errors cannot be measured directly, they are minimized by reviewing all data for consistency and reasonableness.

Egg-type chicks hatched are comprised of all chicks of egg-type domesticated breeds including males and chicks destined for hatchery supply flocks and research purposes. The relationship of chicks hatched to chicken inventory and poultry marketings is carefully monitored. The disposition of egg-type chicks hatched prior to placement into the laying flock can vary significantly, which can make comparisons to changes in layer inventory inconsistent over time.

Intended placement data reported by leading breeders include pullet chicks expected from eggs sold the preceding month. The breeders in this report account for a large percentage of replacement pullets for hatchery supply flocks. Production of replacement pullets by these breeders indicates the number of pullets available to hatchery supply flocks several months before the pullets will actually move into the flocks. "Hatchery Supply Flocks" include all generations of layers which could lay eggs to supply a hatchery. This includes the generations of parents, grandparents, great-grandparents, pedigree, etc. Also included are research flocks, vaccine flocks, and specific pathogen-free flocks. The broiler cumulative potential placements are a moving total of the intended placements 7-15 months earlier. The egg-type cumulative potential placements of 7-18 months represent the first laying cycle. Molting and additional laying cycles will increase the cumulative potential placements of egg-type hatching flocks.

The next "Chickens and Eggs" report will be released at 3 p.m. ET on October 22, 2002.

The United States Department of Agriculture (USDA) prohibits discrimination in all its programs on the basis of race, color, national origin, gender, religion, age, disability, political beliefs, sexual orientation, and marital or family status. (Not all prohibited bases apply to all programs.) Persons with disabilities who require alternative means for communication of program information (braille, large print, audiotape, etc.) should contact the USDA's TARGET Center at 202-720-2600 (voice and TDD).

To file a complaint of discrimination, write USDA, Director, Office of Civil Rights, Room 326-W, Whitten Building, 1400 Independence Avenue, SW, Washington, D.C., 20250-9410, or call 202-720-5964 (voice or TDD). USDA is an equal opportunity provider and employer.

ACCESS TO REPORTS!!

For your convenience, there are several ways to obtain NASS reports, data products, and services:

INTERNET ACCESS

All NASS reports are available free of charge on the worldwide Internet. For access, connect to the Internet and go to the NASS Home Page at: <http://www.usda.gov/nass/>. Select "Today's Reports" or Publications and then Reports Calendar or Publications and then Search, by Title or Subject.

E-MAIL SUBSCRIPTION

There are two options for subscribing via e-mail. All NASS reports are available by subscription free of charge direct to your e-mail address. 1) Starting with the NASS Home Page at <http://www.usda.gov/nass/>, click on **Publications**, then click on the **Subscribe by E-mail** button which takes you to the page describing e-mail delivery of reports. Finally, click on **Go to the Subscription Page** and follow the instructions. 2) If you do NOT have Internet access, send an e-mail message to: usda-reports@usda.mannlib.cornell.edu. In the body of the message type the word: **list**.

AUTOFAX ACCESS

NASSFax service is available for some reports from your fax machine. Please call 202-720-2000, using the handset attached to your fax. Respond to the voice prompts. Document 0411 is a list of available reports.

PRINTED REPORTS OR DATA PRODUCTS

CALL OUR TOLL-FREE ORDER DESK: 800-999-6779 (U.S. and Canada)
Other areas, please call 703-605-6220 FAX: 703-605-6900
(Visa, MasterCard, check, or money order acceptable for payment.)

ASSISTANCE

For **assistance** with general agricultural statistics or further information about NASS or its products or services, contact the **Agricultural Statistics Hotline** at **800-727-9540**, 7:30 a.m. to 4:00 p.m. ET, or e-mail: nass@nass.usda.gov.

**USDA Data Users' Forum
October 21, 2002
Holiday Inn Mart Plaza
Chicago, Illinois**

The USDA's National Agricultural Statistics Service will hold a public forum for open exchange between Federal agricultural statistics agencies and data users on October 21, 2002. Agency representatives will provide updates on pending changes in the various statistical and information programs and will seek comments from data users. The USDA's Agricultural Marketing Service, Economic Research Service, Foreign Agricultural Service, and World Agricultural Outlook Board, as well as the U.S. Census Bureau's Foreign Trade Division, will also participate in the forum.

For registration details or additional information about the Data Users' Forum, see the NASS homepage at www.usda.gov/nass/ or contact Karlyn McCutcheon of NASS at (202) 690-8141 or at karlyn_mccutcheon@nass.usda.gov.

This Data Users' Forum precedes an Industry Outlook Meeting that will be held at the same location on October 22, 2002. The outlook meeting brings together analysts from various commodity sectors to discuss the outlook situation. For more information about the outlook meeting and to register for it, contact Terry Francl of the American Farm Bureau Federation at (847) 685-8769 or at terry@fb.org.