

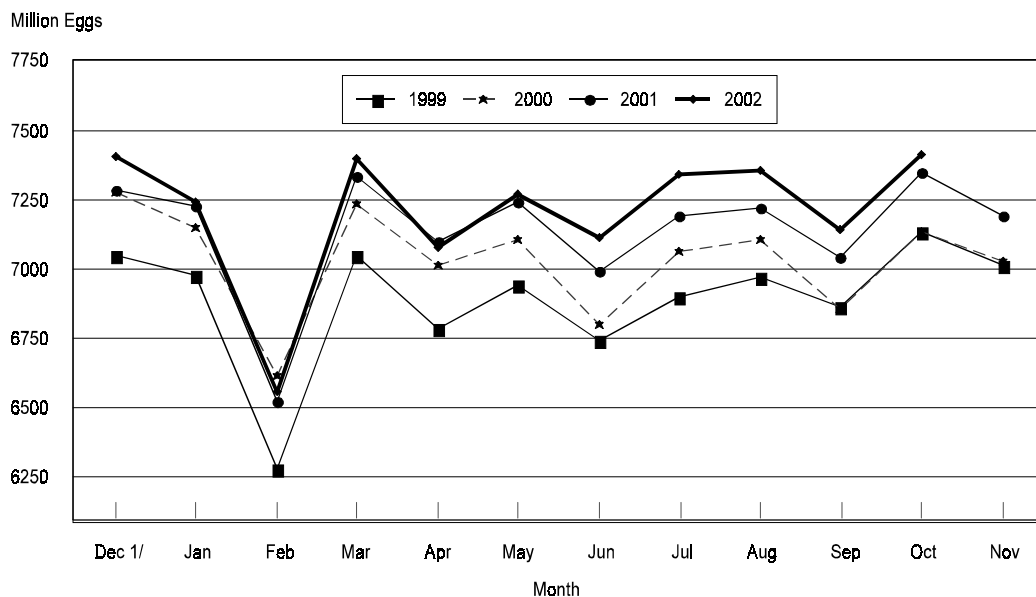
Released November 22, 2002, by the National Agricultural Statistics Service (NASS), Agricultural Statistics Board, U.S. Department of Agriculture. For information on "Chickens and Eggs" call Tom Kruchten at (202) 690-4870, for "Hatch" call Jody Roberts at (202) 690-8632, office hours 7:30 a.m. to 4:00 p.m. ET.

## October Egg Production Up 1 Percent

U.S. egg production totaled 7.41 billion during October 2002, up 1 percent from last year. Production included 6.34 billion table eggs and 1.07 billion hatching eggs, of which 1.01 billion were broiler-type and 58.0 million were egg-type. The total number of layers during October 2002 averaged 338 million, up slightly from a year earlier. October egg production per 100 layers was 2,192 eggs, up 1 percent from the 2,180 eggs in October 2001.

October 2002 contained 23 weekdays, one holiday and four Saturdays, the same as October 2001.

## All Egg Production By Months United States, 1999 - 2002



1/ Previous Year

All layers in the U.S. on November 1, 2002, totaled 338 million, up slightly from a year ago. The 338 million layers consisted of 281 million layers producing table or commercial type eggs, 54.8 million layers producing broiler-type hatching eggs, and 2.55 million layers producing egg-type hatching eggs. Rate of lay per day on November 1, 2002, averaged 71.1 eggs per 100 layers, up 1 percent from a year ago.

Laying flocks in the 30 major egg producing States produced 6.94 billion eggs during October 2002, up 1 percent from a year ago. The average number of layers during October, at 317 million, was up slightly from a year ago.

Individual State estimates are available for the 30 major egg producing States. These States are listed on page 8 of this release and account for approximately 95 percent of the total U.S. egg production. Production for the other States are grouped into an "Other States" category and combined with the 30 States published individually to obtain a U.S. estimate. Individual State estimates for "Other States" are available annually in the "**Chickens and Eggs Summary**" report.

### **Egg-Type Chicks Hatched Down 11 Percent**

Egg-type chicks hatched during October totaled 32.0 million, down 11 percent from October 2001. Eggs in incubators totaled 30.4 million on November 1, 2002, up 7 percent from a year ago.

Domestic placements of egg-type pullet chicks for future hatchery supply flocks by leading breeders totaled 186,000 during October 2002, up 24 percent from October 2001.

### **Broiler Hatch Down 4 Percent**

The October 2002 hatch of broiler-type chicks, at 720 million, was down 4 percent from October of the previous year. There were 574 million eggs in incubators on November 1, 2002, down 2 percent from a year earlier.

Leading breeders placed 6.3 million broiler-type pullet chicks for future domestic hatchery supply flocks during October 2002, down 7 percent from October 2001.

**All Layers: Average Number on Hand During the Month,  
United States, 1999-02**

Month	1999	2000	2001	2002
	<i>1,000 Layers</i>	<i>1,000 Layers</i>	<i>1,000 Layers</i>	<i>1,000 Layers</i>
Dec <sup>1</sup>	321,972	328,878	332,281	338,524
Jan	322,356	328,657	333,798	338,265
Feb	322,827	329,941	335,813	337,027
Mar	322,782	330,961	336,820	336,606
Apr	321,539	329,185	337,139	335,729
May	320,510	326,288	335,159	334,857
Jun	320,441	325,057	332,920	335,028
Jul	319,819	325,663	332,231	335,269
Aug	320,188	325,853	332,800	336,027
Sep	322,409	326,337	335,020	337,151
Oct	325,287	328,278	337,085	338,036
Nov	328,268	330,830	337,915	

<sup>1</sup> December preceding year.

**Eggs: Production During the Month by Type,  
United States, 2001-02**

Month	Total Eggs		Table Eggs		Hatching Eggs	
	2001	2002	2001	2002	2001	2002
	<i>Million Eggs</i>	<i>Million Eggs</i>	<i>Million Eggs</i>	<i>Million Eggs</i>	<i>Million Eggs</i>	<i>Million Eggs</i>
Dec <sup>1</sup>	7,287	7,404	6,206	6,330	1,081	1,074
Jan	7,226	7,245	6,129	6,154	1,097	1,091
Feb	6,524	6,561	5,517	5,574	1,007	987
Mar	7,336	7,395	6,224	6,291	1,112	1,104
Apr	7,099	7,081	6,016	5,992	1,083	1,089
May	7,240	7,274	6,114	6,138	1,126	1,135
Jun	6,992	7,116	5,907	6,027	1,085	1,089
Jul	7,195	7,341	6,097	6,237	1,098	1,104
Aug	7,221	7,353	6,138	6,260	1,083	1,093
Sep	7,044	7,145	5,993	6,099	1,051	1,045
Oct	7,347	7,410	6,264	6,344	1,083	1,066
Nov	7,191		6,159		1,032	
During Year	85,702	79,325	72,764	67,446	12,938	11,877

<sup>1</sup> December preceding year.

**Layers and Eggs: Layers on Hand and Eggs Produced by Type,  
and Forced Molt, United States, September-October 2001-02**

Item	Unit	2001	2002	2002 as % of 2001
Layers During Sep	1,000			
All Layers		335,020	337,151	101
Table Egg Type		276,815	279,296	101
Hatching Egg Type		58,205	57,855	99
Broiler-Type Hatching		55,537	55,373	100
Egg-Type Hatching		2,668	2,482	93
Eggs per 100 Layers During Sep	Number			
All Layers		2,103	2,119	101
Table Egg Type		2,165	2,184	101
Hatching Egg Type		1,806	1,806	100
Broiler-Type Hatching		1,786	1,786	100
Egg-Type Hatching		2,211	2,256	102
Eggs Produced During Sep	Million			
All Layers		7,044	7,145	101
Table Egg Type		5,993	6,099	102
Hatching Egg Type		1,051	1,045	99
Broiler-Type Hatching		992	989	100
Egg-Type Hatching		59	56	95
Layers on Oct 1	1,000			
All Layers		336,573	337,765	100
Table Egg Type		278,125	280,459	101
Hatching Egg Type		58,448	57,306	98
Broiler-Type Hatching		55,823	54,861	98
Egg-Type Hatching		2,625	2,445	93
Eggs per 100 Layers on Oct 1	Number			
All Layers		69.9	70.2	100
Table Egg Type		72.0	72.4	101
Hatching Egg Type		59.9	59.9	100
Broiler-Type Hatching		59.2	59.3	100
Egg-Type Hatching		75.5	74.3	98
Forced Molt Layers on Oct 1	Percent			
Percent Being Molted		4.4	4.6	105
Percent with Molt Completed		22.8	23.7	104
Layers Sold for Slaughter During Sep	1,000	14,021	15,753	112
Layers Rendered, Died, Destroyed, Composted or Disappeared For Any Reason During Sep	1,000	5,024	3,984	79
Pullets Less Than 20 Weeks of Age, Oct 1	1,000	96,409	92,709	96
Pullets Added During Sep <sup>1</sup>	1,000	21,722	22,222	102

<sup>1</sup> Pullet chicks one day old added to pullet flocks.

**Layers and Eggs: Layers on Hand and Eggs Produced by Type,  
and Forced Molt, United States, October-November 2001-02**

Item	Unit	2001 <sup>1</sup>	2002	2002 as % of 2001
Layers During Oct	1,000			
All Layers		337,085	338,036	100
Table Egg Type		278,583	280,702	101
Hatching Egg Type		58,502	57,334	98
Broiler-Type Hatching		55,844	54,833	98
Egg-Type Hatching		2,658	2,501	94
Eggs per 100 Layers During Oct	Number			
All Layers		2,180	2,192	101
Table Egg Type		2,249	2,260	100
Hatching Egg Type		1,851	1,859	100
Broiler-Type Hatching		1,830	1,838	100
Egg-Type Hatching		2,295	2,319	101
Eggs Produced During Oct	Million			
All Layers		7,347	7,410	101
Table Egg Type		6,264	6,344	101
Hatching Egg Type		1,083	1,066	98
Broiler-Type Hatching		1,022	1,008	99
Egg-Type Hatching		61	58	95
Layers on Nov 1	1,000			
All Layers		337,549	338,262	100
Table Egg Type		279,016	280,918	101
Hatching Egg Type		58,533	57,344	98
Broiler-Type Hatching		55,850	54,794	98
Egg-Type Hatching		2,683	2,550	95
Eggs per 100 Layers on Nov 1	Number			
All Layers		70.6	71.1	101
Table Egg Type		73.0	73.4	101
Hatching Egg Type		59.1	59.8	101
Broiler-Type Hatching		58.4	59.1	101
Egg-Type Hatching		74.4	75.6	102
Forced Molt Layers, Nov 1	Percent			
Percent Being Molted		3.1	3.8	123
Percent with Molt Completed		23.2	23.5	101
Layers Sold for Slaughter During Oct	1,000	14,530	15,215	105
Layers Rendered, Died, Destroyed, Composted or Disappeared For Any Reason During Oct	1,000	4,290	4,220	98
Pullets Less Than 20 Weeks of Age, Nov 1	1,000	94,424	92,452	98
Pullets Added During Oct <sup>2</sup>	1,000	20,190	21,191	105

<sup>1</sup> Revised.

<sup>2</sup> Pullet chicks one day old added to pullet flocks.

**Layers and Eggs: Layers on Hand and Eggs Produced by Type, and Forced Molt, 30 Selected States, September-October, 2001-02 <sup>1</sup>**

Item	Unit	2001	2002	2002 as % of 2001
Layers During Sep	1,000			
All Layers		314,323	315,813	100
Table Egg Type		260,799	262,623	101
Hatching Egg Type		53,524	53,190	99
Broiler-Type Hatching		50,930	50,801	100
Egg-Type Hatching		2,594	2,389	92
Eggs per 100 Layers During Sep	Number			
All Layers		2,100	2,117	101
Table Egg Type		2,161	2,181	101
Hatching Egg Type		1,803	1,803	100
Broiler-Type Hatching		1,783	1,781	100
Egg-Type Hatching		2,197	2,260	103
Eggs Produced During Sep	Million			
All Layers		6,602	6,687	101
Table Egg Type		5,637	5,727	102
Hatching Egg Type		965	959	99
Broiler-Type Hatching		908	905	100
Egg-Type Hatching		57	54	95
Layers on Oct 1	1,000			
All Layers		316,082	316,411	100
Table Egg Type		262,294	263,738	101
Hatching Egg Type		53,788	52,673	98
Broiler-Type Hatching		51,235	50,320	98
Egg-Type Hatching		2,553	2,353	92
Eggs per 100 Layers on Oct 1	Number			
All Layers		69.9	70.2	100
Table Egg Type		72.0	72.3	100
Hatching Egg Type		59.8	59.9	100
Broiler-Type Hatching		59.0	59.2	100
Egg-Type Hatching		75.9	74.1	98
Forced Molt Layers on Oct 1	Percent			
Percent Being Molted		4.4	4.7	107
Percent with Molt Completed		22.7	23.5	104
Layers Sold for Slaughter During Sep	1,000	13,070	14,244	109
Layers Rendered, Died, Destroyed, Composted or Disappeared For Any Reason During Sep	1,000	4,731	3,772	80
Pullets Less Than 20 Weeks of Age, Oct 1	1,000	90,474	86,857	96
Pullets Added During Sep <sup>2</sup>	1,000	20,606	20,873	101

<sup>1</sup> The 30 States are listed in the table on page 8.

<sup>2</sup> Pullet chicks one day old added to pullet flocks.

**Layers and Eggs: Layers on Hand and Eggs Produced by Type, and Forced Molt, 30 Selected States, October-November, 2001-02 <sup>1</sup>**

Item	Unit	2001 <sup>2</sup>	2002	2002 as % of 2001
Layers During Oct	1,000			
All Layers		316,470	316,630	100
Table Egg Type		262,655	263,830	100
Hatching Egg Type		53,815	52,800	98
Broiler-Type Hatching		51,230	50,385	98
Egg-Type Hatching		2,585	2,415	93
Eggs per 100 Layers During Oct	1,000			
All Layers		2,181	2,191	100
Table Egg Type		2,249	2,258	100
Hatching Egg Type		1,849	1,856	100
Broiler-Type Hatching		1,825	1,834	100
Egg-Type Hatching		2,321	2,319	100
Eggs Produced During Oct	Million			
All Layers		6,901	6,936	101
Table Egg Type		5,906	5,956	101
Hatching Egg Type		995	980	98
Broiler-Type Hatching		935	924	99
Egg-Type Hatching		60	56	93
Layers on Nov 1	1,000			
All Layers		316,822	316,817	100
Table Egg Type		262,999	263,905	100
Hatching Egg Type		53,823	52,912	98
Broiler-Type Hatching		51,213	50,441	98
Egg-Type Hatching		2,610	2,471	95
Eggs per 100 Layers on Nov 1	Number			
All Layers		70.6	71.1	101
Table Egg Type		73.0	73.4	101
Hatching Egg Type		59.1	59.8	101
Broiler-Type Hatching		58.3	59.0	101
Egg-Type Hatching		74.8	75.4	101
Forced Molt Layers, Nov 1	Percent			
Percent Being Molted		3.0	3.8	127
Percent with Molt Completed		23.1	23.3	101
Layers Sold for Slaughter During Oct	1,000	13,663	13,923	102
Layers Rendered, Died, Destroyed, Composted or Disappeared For Any Reason During Oct	1,000	4,128	3,975	96
Pullets Less Than 20 Weeks of Age, Nov 1	1,000	88,651	86,694	98
Pullets Added During Oct <sup>3</sup>	1,000	19,156	19,889	104

<sup>1</sup> The 30 States are listed in the table on page 8.

<sup>2</sup> Revised.

<sup>3</sup> Pullet chicks one day old added to pullet flocks.

**Layers and Eggs: Layers on Hand and Eggs Produced by State  
and United States, During September 2001-02**

State	Table Egg Layers in Flocks 30,000 and Above		All Layers <sup>1</sup>		Eggs per 100 for All Layers <sup>1</sup>	
	2001	2002	2001	2002	2001	2002
	<i>1,000</i>	<i>1,000</i>	<i>1,000</i>	<i>1,000</i>	<i>Number</i>	<i>Number</i>
AL	2,843	2,373	10,392	9,989	1,867	1,872
AR	4,589	4,435	14,235	14,394	1,876	1,841
CA	22,603	23,013	23,135	23,590	2,122	2,136
CO	3,233	3,406	3,749	3,898	2,161	2,258
CT	2,987	3,011	3,033	3,068	2,202	2,151
FL	10,021	9,958	10,804	10,654	2,064	2,121
GA	11,629	10,880	21,124	20,237	1,979	2,016
HI	532	488	561	537	1,747	1,695
IL	3,157	3,086	3,399	3,325	2,295	2,105
IN	22,118	22,496	22,822	23,194	2,200	2,272
IA	32,767	36,771	33,569	37,562	2,187	2,194
ME	3,944	4,272	4,008	4,328	2,138	1,987
MD	2,902	2,919	3,155	3,147	2,250	2,288
MI	6,222	6,405	6,473	6,656	1,993	2,194
MN	11,380	10,765	12,080	11,500	2,202	2,191
MS	1,891	1,779	6,687	6,831	1,854	1,918
MO	5,479	5,651	6,868	7,075	2,068	2,219
NE	11,608	11,553	11,708	11,653	2,144	2,188
NY	3,746	3,788	4,078	4,020	2,281	2,239
NC	3,237	3,337	11,090	10,692	1,903	1,899
OH	29,783	30,127	30,383	30,614	2,182	2,140
OK	1,904	1,864	3,973	3,964	1,863	1,867
OR	2,807	2,620	2,985	2,800	2,211	2,250
PA	22,943	22,429	24,344	23,709	2,267	2,244
SC	4,619	4,294	5,637	5,319	2,111	2,124
SD	2,190	2,132	2,390	2,332	2,008	1,973
TX	14,493	14,082	18,763	18,484	2,004	2,099
VA	1,461	1,270	3,317	2,882	1,779	1,943
WA	4,924	5,116	4,996	5,187	2,182	2,024
WI	3,977	3,574	4,565	4,172	2,147	2,133
30 Sts	255,989	257,894	314,323	315,813	2,100	2,117
Oth Sts <sup>2</sup>	14,823	15,501	20,697	21,338	2,140	2,146
US	270,812	273,395	335,020	337,151	2,103	2,119

<sup>1</sup> Includes all layers and eggs produced in both table egg and hatching egg flocks regardless of size.

<sup>2</sup> Estimates for individual States are not available.



**Layers and Eggs: Layers on Hand and Eggs Produced by State  
and United States, During October 2001-02**

State	Table Egg Layers in Flocks 30,000 and Above		All Layers <sup>1</sup>		Eggs per 100 for All Layers <sup>1</sup>	
	2001	2002	2001	2002	2001	2002
	<i>1,000</i>	<i>1,000</i>	<i>1,000</i>	<i>1,000</i>	<i>Number</i>	<i>Number</i>
AL	2,761	2,305	10,330	9,816	1,926	1,925
AR	4,759	4,699	14,613	14,667	1,930	1,868
CA	23,078	23,021	23,656	23,605	2,198	2,216
CO	3,111	3,343	3,625	3,829	2,152	2,350
CT	2,998	3,016	3,044	3,072	2,293	2,279
FL	10,033	10,172	10,782	10,826	2,161	2,189
GA	12,005	10,979	21,661	20,330	2,064	2,105
HI	531	488	560	537	1,732	1,825
IL	3,290	3,153	3,525	3,391	2,383	2,300
IN	22,279	22,874	22,969	23,597	2,255	2,297
IA	33,312	37,063	34,136	37,876	2,276	2,292
ME	3,992	4,276	4,057	4,328	2,384	2,033
MD	2,868	3,003	3,152	3,201	2,379	2,437
MI	6,316	6,338	6,567	6,589	2,178	2,277
MN	11,560	10,747	12,243	11,467	2,197	2,259
MS	1,720	1,814	6,470	6,714	1,978	1,996
MO	5,575	5,550	6,983	6,939	2,148	2,291
NE	11,526	11,556	11,626	11,656	2,193	2,248
NY	3,833	3,791	4,174	4,024	2,276	2,361
NC	3,300	3,368	11,170	10,725	1,952	1,977
OH	29,786	29,924	30,375	30,397	2,245	2,145
OK	1,848	1,862	3,865	3,931	1,940	1,908
OR	2,799	2,689	2,980	2,857	2,349	2,310
PA	22,735	22,444	24,137	23,727	2,337	2,348
SC	4,661	4,272	5,667	5,308	2,329	2,261
SD	2,177	2,138	2,377	2,338	2,103	1,967
TX	14,512	14,252	18,811	18,651	2,110	2,214
VA	1,465	1,297	3,237	2,902	1,854	2,068
WA	4,995	5,059	5,066	5,129	2,270	2,125
WI	4,020	3,608	4,612	4,201	2,342	2,190
30 Sts	257,845	259,101	316,470	316,630	2,181	2,191
Oth Sts <sup>2</sup>	14,736	15,700	20,615	21,406	2,163	2,214
US	272,581	274,801	337,085	338,036	2,180	2,192

<sup>1</sup> Includes all layers and eggs produced in both table egg and hatching egg flocks regardless of size.

<sup>2</sup> Estimates for individual States are not available.

**Egg Production: By Type, State, and United States,  
September 2001-02**

State	Total Production		Table Eggs <sup>1</sup>		Hatching Eggs <sup>1</sup>	
	2001	2002	2001	2002	2001	2002
	<i>Million Eggs</i>	<i>Million Eggs</i>	<i>Million Eggs</i>	<i>Million Eggs</i>	<i>Million Eggs</i>	<i>Million Eggs</i>
AL	194	187	59	50	135	137
AR	267	265	100	94	167	171
CA	491	504				
CO	81	88				
CT	67	66				
FL	223	226	209	213	14	13
GA	418	408	247	237	171	171
HI	9.8	9.1	9.8	9.1	0	0
IL	78	70	74	67	4	3
IN	502	527	490	515	12	12
IA	734	824				
ME	86	86				
MD	71	72	67	69	4	3
MI	129	146				
MN	266	252	257	243	9	9
MS	124	131	39	40	85	91
MO	142	157				
NE	251	255	251	255	0	0
NY	93	90				
NC	211	203	76	77	135	126
OH	663	655				
OK	74	74	43	42	31	32
OR	66	63	64	61	2	2
PA	552	532	535	518	17	14
SC	119	113	101	95	18	18
SD	48	46	48	46	0	0
TX	376	388				
VA	59	56	31	29	28	27
WA	109	105				
WI	98	89				
30 Sts	6,602	6,687	5,637	5,727	965	959
Oth Sts <sup>2</sup>	443	458	356	372	86	86
US	7,044	7,145	5,993	6,099	1,051	1,045

<sup>1</sup> Data by type of flock not shown for some States to avoid disclosing individual operations.

<sup>2</sup> Estimates for individual States are not available.

**Egg Production: By Type, State, and United States,  
October 2001-02**

State	Total Production		Table Eggs <sup>1</sup>		Hatching Eggs <sup>1</sup>	
	2001	2002	2001	2002	2001	2002
	<i>Million Eggs</i>	<i>Million Eggs</i>	<i>Million Eggs</i>	<i>Million Eggs</i>	<i>Million Eggs</i>	<i>Million Eggs</i>
AL	199	189	62	52	137	137
AR	282	274	106	103	176	171
CA	520	523				
CO	78	90				
CT	70	70				
FL	233	237	220	226	13	11
GA	447	428	268	249	179	179
HI	9.7	9.8	9.7	9.8	0	0
IL	84	78	81	74	3	4
IN	518	542	506	529	12	13
IA	777	868				
ME	97	88				
MD	75	78	69	75	6	3
MI	143	150				
MN	269	259	261	250	8	9
MS	128	134	41	42	87	92
MO	150	159				
NE	255	262	255	262	0	0
NY	95	95				
NC	218	212	80	81	138	131
OH	682	652				
OK	75	75	44	43	31	32
OR	70	66	68	65	2	1
PA	564	557	547	543	17	14
SC	132	120	112	101	20	19
SD	50	46	50	46	0	0
TX	397	413				
VA	60	60	32	31	28	29
WA	115	109				
WI	108	92				
30 Sts	6,901	6,936	5,906	5,956	995	980
Oth Sts <sup>2</sup>	446	474	358	388	88	86
US	7,347	7,410	6,264	6,344	1,083	1,066

<sup>1</sup> Data by type of flock not shown for some States to avoid disclosing individual operations.

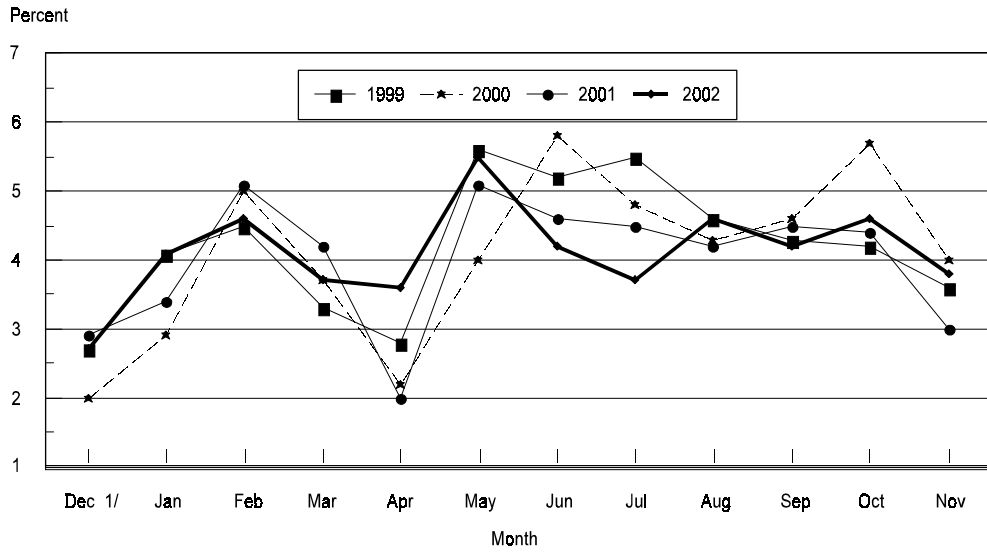
<sup>2</sup> Estimates for individual States are not available.

**Forced Molt: Percent of All Layers by Month,  
United States, 2001-02<sup>1</sup>**

Month	Percent Being Molted		Percent with Molt Completed	
	2001	2002	2001	2002
	<i>Percent</i>	<i>Percent</i>	<i>Percent</i>	<i>Percent</i>
Jan	3.4	4.1	24.1	22.6
Feb	5.1	4.6	22.3	22.0
Mar	4.2	3.7	23.1	22.1
Apr	2.0	3.6	23.1	22.1
May	5.1	5.7	20.9	21.5
Jun	4.6	4.2	23.3	22.2
Jul	4.5	3.7	23.4	22.8
Aug	4.2	4.6	23.1	21.9
Sep	4.5	4.2	22.7	23.5
Oct	4.4	4.6	22.8	23.7
Nov	3.1	3.8	23.2	23.5
Dec	2.7		23.9	

<sup>1</sup> As of first of month.

**All Layers : United States  
Percent Being Molted, 1999 - 2002  
First of Month**



1/ Previous Year

**Forced Molt: Percent of All Layers by State  
and United States, November 2001-02 <sup>1</sup>**

State	Percent Being Molted		Percent with Molt Completed	
	2001	2002	2001	2002
	<i>Percent</i>	<i>Percent</i>	<i>Percent</i>	<i>Percent</i>
AL	1.5	6.0	6.0	14.5
AR	1.5	0.0	14.0	12.0
CA	3.0	5.0	36.5	28.5
CO	3.5	0.5	18.0	24.5
CT	3.5	3.5	11.0	4.0
FL	2.0	4.5	35.0	30.5
GA	1.0	4.0	15.0	16.0
HI	12.5	6.5	43.0	47.5
IL	6.0	0.0	19.5	46.0
IN	4.0	5.5	30.0	23.5
IA	4.0	4.0	31.0	31.5
ME	0.0	0.0	0.0	2.0
MD	0.0	2.5	21.0	53.0
MI	1.5	3.0	24.0	28.0
MN	5.5	3.5	28.0	26.0
MS	0.5	2.5	12.5	11.5
MO	5.0	2.5	19.5	17.0
NE	3.5	7.0	26.5	25.5
NY	5.5	0.5	0.5	11.0
NC	0.0	1.5	8.5	9.5
OH	4.0	6.0	22.5	22.5
OK	0.0	0.0	7.0	7.5
OR	0.0	0.0	31.5	29.0
PA	6.0	3.5	18.5	18.0
SC	0.0	0.0	25.0	32.5
SD	3.5	4.5	29.5	31.5
TX	0.5	2.0	24.5	26.0
VA	4.0	0.0	15.5	16.0
WA	8.5	14.5	42.0	43.5
WI	2.0	3.5	31.0	37.5
30 Sts	3.0	3.8	23.1	23.3
Oth Sts <sup>2</sup>	3.7	3.6	25.1	26.5
US	3.1	3.8	23.2	23.5

<sup>1</sup> As of first of month.

<sup>2</sup> Estimates for individual States are not available.

**Hatchery Production: Eggs in Incubators, Chicks Hatched,  
and Placements by Type, United States, October-November 2001-02**

Item	2001	2002	2002 as % of 2001
	<i>1,000</i>	<i>1,000</i>	<i>Percent</i>
<b>Egg-Type</b>			
Eggs in Incubators on Nov 1	28,380	30,352	107
Chicks Hatched During Oct	35,816	32,044	89
Chicks Hatched Jan thru Oct	388,075	357,554	92
Pullets Hatched During Oct for Intended Placements in Hatchery Supply Flocks 7-18 Month Earlier <sup>1</sup>	150 3,158	186 3,026	124 96
<b>Broiler-Type</b>			
Eggs in Incubators on Nov 1	587,589	574,279	98
Chicks Hatched During Oct	747,495	720,310	96
Chicks Hatched Jan thru Oct	7,534,218	7,630,955	101
Pullets Hatched During Oct for Intended Placements in Hatchery Supply Flocks 7-15 Months Earlier <sup>2</sup>	6,704 60,480	6,265 61,719	93 102

<sup>1</sup> 2002 includes pullet chicks hatched Apr 2001 through Mar 2002.

<sup>2</sup> 2002 includes pullet chicks hatched Jul 2001 through Mar 2002.

**Egg-Type Eggs in Incubators: By Region and United States,  
November 1, 2001-02**

Geographic Division	2001	2002	2002 as % of 2001
	<i>1,000</i>	<i>1,000</i>	<i>Percent</i>
North Atlantic	4,493	3,963	88
E North Central	6,314	6,440	102
W North Central	6,082	5,912	97
South Atlantic	3,966	4,430	112
South Central	3,606	5,008	139
West	3,919	4,599	117
<b>US</b>	<b>28,380</b>	<b>30,352</b>	<b>107</b>

**Regional Listing:**

North Atlantic = CT, ME, MA, NH, NJ, NY, PA, RI, VT.

E North Central = IL, IN, MI, OH, WI.

W North Central = IA, KS, MN, MO, NE, ND, SD.

South Atlantic = DE, FL, GA, MD, NC, SC, VA, WV.

South Central = AL, AR, KY, LA, MS, OK, TN, TX.

West = AK, AZ, CA, CO, HI, ID, MT, NM, NV, OR, UT, WA, WY.

**Egg-Type Chicks Hatched: By State and United States,  
October 2001-02**

State	October			Jan-Oct		
	2001	2002	2002 as % of 2001	2001	2002	2002 as % of 2001
	<i>1,000</i>	<i>1,000</i>	<i>Percent</i>	<i>1,000</i>	<i>1,000</i>	<i>Percent</i>
AR	828	733	89	8,332	7,988	96
FL	780	606	78	9,135	5,641	62
GA	2,123	1,920	90	21,228	21,750	102
IN	4,169	4,232	102	60,869	48,721	80
IA	5,577	4,855	87	55,280	53,329	96
MN	1,488	1,200	81	16,147	14,731	91
PA	5,259	3,569	68	54,748	43,413	79
Oth Sts <sup>1</sup>	15,592	14,929	96	162,336	161,981	100
US	35,816	32,044	89	388,075	357,554	92

<sup>1</sup> Not published separately to avoid disclosing data for individual operations.

**Egg-Type Chicks Hatched: By Month, United States, 2000-02**

Month	By Months				Cumulative			
	2000	2001	2002	2002 as % of 2001	2000	2001	2002	2002 as % of 2001
	<i>1,000</i>	<i>1,000</i>	<i>1,000</i>	<i>Percent</i>	<i>1,000</i>	<i>1,000</i>	<i>1,000</i>	<i>Percent</i>
Jan	34,181	36,706	35,533	97	34,181	36,706	35,533	97
Feb	34,659	37,816	34,326	91	68,840	74,522	69,859	94
Mar	38,877	40,993	36,717	90	107,717	115,515	106,576	92
Apr	36,653	42,768	38,212	89	144,370	158,283	144,788	91
May	41,185	42,636	38,944	91	185,555	200,919	183,732	91
Jun	37,268	40,806	35,292	86	222,823	241,725	219,024	91
Jul	33,240	38,640	35,218	91	256,063	280,365	254,242	91
Aug	34,328	34,978	35,877	103	290,391	315,343	290,119	92
Sep	36,325	36,916	35,391	96	326,716	352,259	325,510	92
Oct	36,080	35,816	32,044	89	362,796	388,075	357,554	92
Nov	32,438	32,081			395,234	420,156		
Dec	35,178	31,657			430,412	451,813		

**Intended Placements: Egg-Type Pullet Chicks for Hatchery Supply  
Flocks by Month and Total, United States, 2000-02 <sup>1</sup>**

Month	Pullet Chicks Hatched			2002 as % of 2001	Cumulative Potential Placements Relative to Current Supply Flocks 7-18 Months Earlier <sup>2</sup>		
	2000	2001	2002		2001	2002	2003
	<i>1,000</i>	<i>1,000</i>	<i>1,000</i>	<i>Percent</i>	<i>1,000</i>	<i>1,000</i>	<i>1,000</i>
Jan	212	236	228	97	3,129	3,158	2,974
Feb	251	214	247	115	3,191	3,205	2,916
Mar	286	284	237	83	3,090	3,239	2,886
Apr	309	311	295	95	3,096	3,225	2,926
May	343	315	319	101	3,057	3,134	2,962
Jun	235	261	221	85	3,103	3,087	
Jul	293	340	282	83	3,173	3,048	
Aug	217	251	221	88	3,197	3,040	
Sep	233	219	259	118	3,160	3,073	
Oct	241	150	186	124	3,158	3,026	
Nov	308	261			3,160	3,010	
Dec	245	206			3,132	3,014	
Total	3,173	3,048					

<sup>1</sup> Reported by leading breeders. Coverage may not be 100 percent. Includes expected pullet chicks from eggs sold during the preceding month at the rate of 125 pullet chicks per 30 dozen case of eggs.

<sup>2</sup> For October 2002, includes breeder pullet chicks hatched Apr 2001 through Mar 2002. The 7-18 months represent the first laying cycle. Molting and additional laying cycles will increase the cumulative potential placements.

**Broiler-Type Eggs in Incubators: By Region  
and United States, November 1, 2001-02**

Geographic Division	2001	2002	2002 as % of 2001
	<i>1,000</i>	<i>1,000</i>	<i>Percent</i>
North Atlantic	11,045	10,651	96
E North Central	4,800	7,875	164
W North Central	19,992	16,960	85
South Atlantic	222,643	216,302	97
South Central	307,127	299,675	98
West	21,982	22,816	104
US	587,589	574,279	98



**Broiler-Type Chicks Hatched: By State  
and United States, October 2001-02**

State	October			Jan-Oct		
	2001	2002	2002 as % of 2001	2001	2002	2002 as % of 2001
	<i>1,000</i>	<i>1,000</i>	<i>Percent</i>	<i>1,000</i>	<i>1,000</i>	<i>Percent</i>
AL	103,991	100,667	97	1,033,625	1,049,690	102
AR	108,109	103,526	96	1,071,376	1,082,204	101
DE	12,258	11,767	96	129,645	125,453	97
FL	8,295	8,080	97	86,854	83,070	96
GA	112,239	107,340	96	1,114,928	1,126,418	101
KY	21,899	22,331	102	223,540	235,337	105
MD	33,827	33,068	98	338,600	345,618	102
MS	66,040	64,973	98	668,500	683,081	102
NC	64,358	61,273	95	655,483	668,568	102
OK	22,559	19,536	87	220,361	229,015	104
PA	13,301	12,538	94	129,768	129,793	100
SC	16,958	17,015	100	168,127	165,437	98
TX	53,056	53,154	100	530,176	547,454	103
VA	22,544	21,216	94	238,702	230,642	97
CA, LA, MO, TN, & WV	70,091	65,530	93	713,038	715,782	100
19 Sts <sup>1</sup>	729,525	702,014	96	7,322,723	7,417,562	101
Oth Sts <sup>2</sup>	17,970	18,296	102	211,495	213,393	101
US	747,495	720,310	96	7,534,218	7,630,955	101

<sup>1</sup> States in the weekly hatchery production estimating program.

<sup>2</sup> Not published separately to avoid disclosing data for individual operations.

**Broiler-Type Chicks Hatched: By Month, United States, 2000-02**

Month	By Months				Cumulative			
	2000	2001	2002	2002 as % of 2001	2000	2001	2002	2002 as % of 2001
	<i>1,000</i>	<i>1,000</i>	<i>1,000</i>	<i>Percent</i>	<i>1,000</i>	<i>1,000</i>	<i>1,000</i>	<i>Percent</i>
Jan	753,931	745,093	775,669	104	753,931	745,093	775,669	104
Feb	706,216	680,823	702,576	103	1,460,147	1,425,916	1,478,245	104
Mar	761,764	773,760	790,342	102	2,221,911	2,199,676	2,268,587	103
Apr	749,106	755,455	764,982	101	2,971,017	2,955,131	3,033,569	103
May	777,624	785,704	798,315	102	3,748,641	3,740,835	3,831,884	102
Jun	750,528	766,534	776,397	101	4,499,169	4,507,369	4,608,281	102
Jul	742,823	769,449	781,421	102	5,241,992	5,276,818	5,389,702	102
Aug	743,979	771,550	779,803	101	5,985,971	6,048,368	6,169,505	102
Sep	704,944	738,355	741,140	100	6,690,915	6,786,723	6,910,645	102
Oct	721,249	747,495	720,310	96	7,412,164	7,534,218	7,630,955	101
Nov	684,995	702,607			8,097,159	8,236,825		
Dec	749,026	769,731			8,846,185	9,006,556		

**Intended Placements: Broiler-Type Pullet Chicks for Hatchery  
Supply Flocks by Month and Total, 2000-02 <sup>1</sup>**

Month	Pullet Chicks Hatched			2002 as % of 2001	Cumulative Potential Placements Relative to Current Supply Flocks 7-15 Months Earlier <sup>2</sup>		
	2000	2001	2002		2001	2002	2003
	<i>1,000</i>	<i>1,000</i>	<i>1,000</i>	<i>Percent</i>	<i>1,000</i>	<i>1,000</i>	<i>1,000</i>
US Place- ments							
Jan	6,861	6,685	6,660	100	63,304	60,750	62,869
Feb	7,001	6,748	7,275	108	62,493	60,382	62,767
Mar	7,310	6,752	6,775	100	62,797	60,771	62,955
Apr	6,764	6,398	6,814	107	62,267	60,989	63,069
May	7,435	7,117	7,597	107	62,100	61,008	62,674
Jun	6,829	6,822	7,206	106	62,204	61,521	
Jul	6,310	6,326	6,602	104	61,323	61,346	
Aug	7,288	7,494	7,449	99	61,244	61,608	
Sep	6,469	6,647	6,691	101	60,557	61,766	
Oct	6,694	6,704	6,265	93	60,480	61,719	
Nov	7,105	7,261			60,568	62,207	
Dec	6,429	6,577			60,397	62,310	
Annual Total	82,495	81,531					
Total Place- ments <sup>3</sup>							
Jan	8,069	7,615	8,084	106			
Feb	8,302	8,275	8,491	103			
Mar	8,798	8,325	7,997	96			
Apr	8,522	7,915	8,119	103			
May	8,917	8,647	8,982	104			
Jun	8,201	8,220	8,802	107			
Jul	7,621	7,687	8,083	105			
Aug	8,657	9,133	8,913	98			
Sep	8,042	8,047	8,058	100			
Oct	8,260	7,848	7,438	95			
Nov	8,702	9,017					
Dec	7,614	8,119					
Annual Total	99,705	98,848					

<sup>1</sup> Reported by leading breeders. Coverage may not be 100 percent. Includes expected pullet chicks from eggs sold during the preceding month at the rate of 125 pullet chicks per 30 dozen case of eggs.

<sup>2</sup> For Oct 2002, includes breeder pullet chicks hatched Jul 2001 through Mar 2002.

<sup>3</sup> U.S. production of intended placements worldwide.

## Procedures and Reliability

**Data Sources:** Primary data for the "**Chickens and Eggs**" report are from weekly and/or monthly questionnaires sent to producers. An attempt is made to collect information for layer and egg estimates from each known contractor and independent producer who has over 30,000 table egg layers. Coverage for operations with less than 30,000 table egg layers are estimated each month based on data reported in December. Approximately 900 contractors, independent egg producers, and started pullet operations are contacted each month. All known hatcheries, approximately 330, are contacted for information on a weekly and/or monthly basis.

**Revisions:** The previous month's estimates are subject to revision if late reports or corrected data indicates a different level. Additionally, revisions needed after the monthly report will be made at the end of the marketing year and published in the annual summaries of "**Chickens and Eggs Summary**" and "**Hatchery Production**".

**Procedures and Reliability:** Operations are mailed a questionnaire and given adequate time to respond by mail. Those that do not respond are phoned. Great care is exercised to ensure that all operations are accounted for during each survey period. However, there are usually missing reports that must be accounted for in the estimates.

Sound statistical methodology is employed to derive estimates from the reported data. All data are checked for unusual values. All operations' data are compared to their own past operating profiles and also to trends from other operations. Data for missing operations are estimated based on similar operations or historical data. Survey data are subject to non-sampling errors such as omissions and mistakes in reporting and in processing. While these errors cannot be measured directly, they are minimized by reviewing all data for consistency and reasonableness.

Egg-type chicks hatched are comprised of all chicks of egg-type domesticated breeds including males and chicks destined for hatchery supply flocks and research purposes. The relationship of chicks hatched to chicken inventory and poultry marketings is carefully monitored. The disposition of egg-type chicks hatched prior to placement into the laying flock can vary significantly, which can make comparisons to changes in layer inventory inconsistent over time.

Intended placement data reported by leading breeders include pullet chicks expected from eggs sold the preceding month. The breeders in this report account for a large percentage of replacement pullets for hatchery supply flocks. Production of replacement pullets by these breeders indicates the number of pullets available to hatchery supply flocks several months before the pullets will actually move into the flocks. "Hatchery Supply Flocks" include all generations of layers which could lay eggs to supply a hatchery. This includes the generations of parents, grandparents, great-grandparents, pedigree, etc. Also included are research flocks, vaccine flocks, and specific pathogen-free flocks. The broiler cumulative potential placements are a moving total of the intended placements 7-15 months earlier. The egg-type cumulative potential placements of 7-18 months represent the first laying cycle. Molting and additional laying cycles will increase the cumulative potential placements of egg-type hatching flocks.

The next "Chickens and Eggs" report will be released at 3 p.m. ET on December 23, 2002.

The United States Department of Agriculture (USDA) prohibits discrimination in all its programs on the basis of race, color, national origin, gender, religion, age, disability, political beliefs, sexual orientation, and marital or family status. (Not all prohibited bases apply to all programs.) Persons with disabilities who require alternative means for communication of program information (braille, large print, audiotape, etc.) should contact the USDA's TARGET Center at 202-720-2600 (voice and TDD).

To file a complaint of discrimination, write USDA, Director, Office of Civil Rights, Room 326-W, Whitten Building, 1400 Independence Avenue, SW, Washington, D.C., 20250-9410, or call 202-720-5964 (voice or TDD). USDA is an equal opportunity provider and employer.

## **ACCESS TO REPORTS!!**

---

For your convenience, there are several ways to obtain NASS reports, data products, and services:

### **INTERNET ACCESS**

All NASS reports are available free of charge on the worldwide Internet. For access, connect to the Internet and go to the NASS Home Page at: <http://www.usda.gov/nass/>. Select "Today's Reports" or Publications and then Reports Calendar or Publications and then Search, by Title or Subject.

### **E-MAIL SUBSCRIPTION**

All NASS reports are available by subscription free of charge direct to your e-mail address. Starting with the NASS Home Page at <http://www.usda.gov/nass/>, click on **Publications**, then click on the **Subscribe by E-mail** button which takes you to the page describing e-mail delivery of reports. Finally, click on **Go to the Subscription Page** and follow the instructions.

### **AUTOFAX ACCESS**

NASSFax service is available for some reports from your fax machine. Please call 202-720-2000, using the handset attached to your fax. Respond to the voice prompts. Document 0411 is a list of available reports.

-----

### **PRINTED REPORTS OR DATA PRODUCTS**

**CALL OUR TOLL-FREE ORDER DESK: 800-999-6779 (U.S. and Canada)**  
**Other areas, please call 703-605-6220      FAX: 703-605-6900**  
**(Visa, MasterCard, check, or money order acceptable for payment.)**

-----

### **ASSISTANCE**

For **assistance** with general agricultural statistics or further information about NASS or its products or services, contact the **Agricultural Statistics Hotline** at **800-727-9540**, 7:30 a.m. to 4:00 p.m. ET, or e-mail: [nass@nass.usda.gov](mailto:nass@nass.usda.gov).

---