

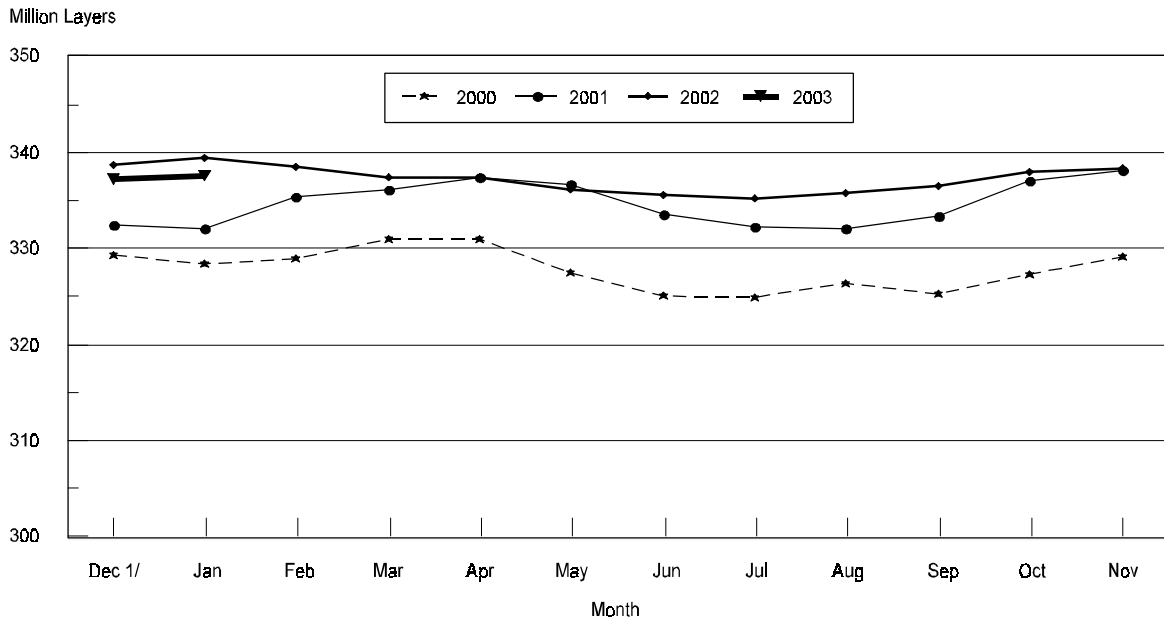
Released January 31, 2003, by the National Agricultural Statistics Service (NASS), Agricultural Statistics Board, U.S. Department of Agriculture. For information on "Chickens and Eggs" call Tom Kruchten at (202) 690-4870, for "Hatch" call Jody Roberts at (202) 690-8632, office hours 7:30 a.m. to 4:00 p.m. ET.

## December Egg Production Down 1 Percent

U.S. egg production totaled 7.38 billion during December 2002, down 1 percent from last year. Production included 6.33 billion table eggs and 1.05 billion hatching eggs, of which 992 million were broiler-type and 61.0 million were egg-type. The total number of layers during December 2002 averaged 337 million, down 1 percent from a year earlier. December egg production per 100 layers was 2,187 eggs, compared to 2188 eggs in December 2001.

December 2002 contained 22 weekdays, one holiday and four Saturdays, compared to 21 weekdays, one holiday and five Saturdays in December 2001.

## All Layers: 1st of Month United States, 2000 - 2003



1/ Previous Year

All layers in the U.S. on January 1, 2003, totaled 338 million, down 1 percent from a year ago. The 338 million layers consisted of 279 million layers producing table or commercial type eggs, 55.7 million layers producing broiler-type hatching eggs, and 2.65 million layers producing egg-type hatching eggs. Rate of lay per day on January 1, 2003, averaged 69.8 eggs per 100 layers, the same from a year ago.

Laying flocks in the 30 major egg producing States produced 6.90 billion eggs during December 2002, down 1 percent from a year ago. The average number of layers during December, at 315 million, was down 1 percent from a year ago.

Individual State estimates are available for the 30 major egg producing States. These States are listed on page 8 of this release and account for approximately 94 percent of the total U.S. egg production. Production for the other States are grouped into an "Other States" category and combined with the 30 States published individually to obtain a U.S. estimate. Individual State estimates for "Other States" are available annually in the "**Chickens and Eggs Summary**" report.

### **Egg-Type Chicks Hatched Up 2 Percent**

Egg-type chicks hatched during December totaled 32.2 million, up 2 percent from December 2001. Eggs in incubators totaled 30.1 million on January 1, 2002, down 4 percent from a year ago.

Domestic placements of egg-type pullet chicks for future hatchery supply flocks by leading breeders totaled 187,000 during December 2002, down 9 percent from December 2001.

### **Broiler Hatch Down 2 Percent**

The December 2002 hatch of broiler-type chicks, at 754 million, was down 2 percent from December of the previous year. There were 623 million eggs in incubators on January 1, 2002, down 2 percent from a year earlier.

Leading breeders placed 6.5 million broiler-type pullet chicks for future domestic hatchery supply flocks during December 2002, down 2 percent from December 2001.

**All Layers: Average Number on Hand During the Month,  
United States, 2000-03**

Month	2000	2001	2002	2003
	<i>1,000 Layers</i>	<i>1,000 Layers</i>	<i>1,000 Layers</i>	<i>1,000 Layers</i>
Dec <sup>1</sup>	328,878	332,283	339,105	337,398
Jan	328,657	333,748	338,966	
Feb	329,941	335,763	337,991	
Mar	330,961	336,822	337,447	
Apr	329,185	337,141	336,776	
May	326,288	335,163	335,865	
Jun	325,057	332,928	335,412	
Jul	325,663	332,244	335,498	
Aug	325,853	332,808	336,159	
Sep	326,337	335,276	337,264	
Oct	328,278	337,593	338,159	
Nov	330,830	338,366	337,808	

<sup>1</sup> December preceding year.

**Eggs: Production During the Month by Type,  
United States, 2002-03**

Month	Total Eggs		Table Eggs		Hatching Eggs	
	2002	2003	2002	2003	2002	2003
	<i>Million Eggs</i>	<i>Million Eggs</i>	<i>Million Eggs</i>	<i>Million Eggs</i>	<i>Million Eggs</i>	<i>Million Eggs</i>
Dec <sup>1</sup>	7,420	7,380	6,343	6,326	1,076	1,053
Jan	7,264		6,170		1,093	
Feb	6,581		5,592		988	
Mar	7,417		6,312		1,104	
Apr	7,105		6,016		1,089	
May	7,297		6,161		1,135	
Jun	7,126		6,037		1,089	
Jul	7,347		6,243		1,104	
Aug	7,356		6,263		1,093	
Sep	7,147		6,100		1,046	
Oct	7,412		6,345		1,067	
Nov	7,226		6,204		1,020	
During Year	86,698	7,380	73,786	6,326	12,904	1,053

<sup>1</sup> December preceding year.

**Layers and Eggs: Layers on Hand and Eggs Produced by Type,  
and Forced Molt, United States, November-December 2001-02**

Item	Unit	2001	2002	2002 as % of 2001
Layers During Nov	1,000			
All Layers		338,366	337,808	100
Table Egg Type		279,926	280,830	100
Hatching Egg Type		58,440	56,978	97
Broiler-Type Hatching		55,785	54,397	98
Egg-Type Hatching		2,655	2,581	97
Eggs per 100 Layers During Nov	Number			
All Layers		2,130	2,139	100
Table Egg Type		2,204	2,209	100
Hatching Egg Type		1,773	1,790	101
Broiler-Type Hatching		1,750	1,768	101
Egg-Type Hatching		2,260	2,247	99
Eggs Produced During Nov	Million			
All Layers		7,207	7,226	100
Table Egg Type		6,170	6,204	101
Hatching Egg Type		1,036	1,020	98
Broiler-Type Hatching		976	962	99
Egg-Type Hatching		60	58	97
Layers on Dec 1	1,000			
All Layers		338,628	337,213	100
Table Egg Type		280,308	280,659	100
Hatching Egg Type		58,320	56,554	97
Broiler-Type Hatching		55,707	53,976	97
Egg-Type Hatching		2,613	2,578	99
Eggs per 100 Layers on Dec 1	Number			
All Layers		71.3	71.3	100
Table Egg Type		73.9	73.7	100
Hatching Egg Type		58.9	59.4	101
Broiler-Type Hatching		58.1	58.6	101
Egg-Type Hatching		74.7	74.3	99
Forced Molt Layers on Dec 1	Percent			
Percent Being Molted		2.7	2.7	100
Percent with Molt Completed		23.9	23.7	99
Layers Sold for Slaughter During Nov	1,000	15,965	15,124	95
Layers Rendered, Died, Destroyed, Composted or Disappeared For Any Reason During Nov	1,000	3,684	4,051	110
Pullets Less Than 20 Weeks of Age, Dec 1	1,000	94,755	93,385	99
Pullets Added During Nov <sup>1</sup>	1,000	21,543	20,813	97

<sup>1</sup> Pullet chicks one day old added to pullet flocks.

**Layers and Eggs: Layers on Hand and Eggs Produced by Type,  
and Forced Molt, United States, December-January 2001-03**

Item	Unit	2001	2002	2002 as % of 2001
Layers During Dec	1,000			
All Layers		339,105	337,398	99
Table Egg Type		280,195	279,951	100
Hatching Egg Type		58,910	57,447	98
Broiler-Type Hatching		56,302	54,827	97
Egg-Type Hatching		2,608	2,620	100
Eggs per 100 Layers During Dec	Number			
All Layers		2,188	2,187	100
Table Egg Type		2,264	2,260	100
Hatching Egg Type		1,827	1,833	100
Broiler-Type Hatching		1,801	1,809	100
Egg-Type Hatching		2,377	2,328	98
Eggs Produced During Dec	Million			
All Layers		7,420	7,380	99
Table Egg Type		6,343	6,326	100
Hatching Egg Type		1,076	1,053	98
Broiler-Type Hatching		1,014	992	98
Egg-Type Hatching		62	61	98
		2002	2003	2003 as % of 2002
Layers on Jan 1	1,000			
All Layers		339,423	337,536	99
Table Egg Type		280,060	279,224	100
Hatching Egg Type		59,363	58,312	98
Broiler-Type Hatching		56,769	55,662	98
Egg-Type Hatching		2,594	2,650	102
Eggs per 100 Layers on Jan 1	Number			
All Layers		69.8	69.8	100
Table Egg Type		72.1	72.0	100
Hatching Egg Type		59.0	58.9	100
Broiler-Type Hatching		58.1	58.0	100
Egg-Type Hatching		78.1	77.5	99
Forced Molt Layers on Jan 1	Percent			
Percent Being Molted		4.1	4.4	107
Percent with Molt Completed		22.7	23.7	104
Layers Sold for Slaughter During Dec	1,000	13,581	14,136	104
Layers Rendered, Died, Destroyed, Composted or Disappeared For Any Reason During Dec		4,403	5,867	133
Pullets Less Than 20 Weeks of Age, Jan 1	1,000	94,358	92,186	98
Pullets Added During Dec <sup>1</sup>	1,000	21,546	20,619	96

<sup>1</sup> Pullet chicks one day old added to pullet flocks.

**Layers and Eggs: Layers on Hand and Eggs Produced by Type, and Forced Molt, 30 Selected States, November-December, 2001-02 <sup>1</sup>**

Item	Unit	2001	2002	2002 as % of 2001
Layers During Nov	1,000			
All Layers		317,177	316,216	100
Table Egg Type		263,458	263,703	100
Hatching Egg Type		53,719	52,513	98
Broiler-Type Hatching		51,151	50,023	98
Egg-Type Hatching		2,568	2,490	97
Eggs per 100 Layers During Nov	Number			
All Layers		2,131	2,137	100
Table Egg Type		2,204	2,206	100
Hatching Egg Type		1,774	1,792	101
Broiler-Type Hatching		1,750	1,767	101
Egg-Type Hatching		2,259	2,289	101
Eggs Produced During Nov	Million			
All Layers		6,760	6,758	100
Table Egg Type		5,807	5,816	100
Hatching Egg Type		953	941	99
Broiler-Type Hatching		895	884	99
Egg-Type Hatching		58	57	98
Layers on Dec 1	1,000			
All Layers		317,230	315,511	99
Table Egg Type		263,638	263,430	100
Hatching Egg Type		53,592	52,081	97
Broiler-Type Hatching		51,079	49,583	97
Egg-Type Hatching		2,513	2,498	99
Eggs per 100 Layers on Dec 1	Number			
All Layers		71.4	71.2	100
Table Egg Type		73.9	73.6	100
Hatching Egg Type		58.9	59.4	101
Broiler-Type Hatching		58.1	58.6	101
Egg-Type Hatching		75.2	76.0	101
Forced Molt Layers on Dec 1	Percent			
Percent Being Molted		2.7	2.8	104
Percent with Molt Completed		23.8	23.7	100
Layers Sold for Slaughter During Nov	1,000	15,039	14,388	96
Layers Rendered, Died, Destroyed, Composted or Disappeared For Any Reason During Nov	1,000	3,462	3,845	111
Pullets Less Than 20 Weeks of Age, Dec 1	1,000	89,151	87,677	98
Pullets Added During Nov <sup>2</sup>	1,000	20,474	20,142	98

<sup>1</sup> The 30 States are listed in the table on page 8.

<sup>2</sup> Pullet chicks one day old added to pullet flocks.

**Layers and Eggs: Layers on Hand and Eggs Produced by Type,  
and Forced Molt, 30 Selected States, December-January 2001-03 <sup>1</sup>**

Item	Unit	2001	2002	2002 as % of 2001
Layers During Dec	1,000			
All Layers		317,841	315,380	99
Table Egg Type		263,683	262,621	100
Hatching Egg Type		54,158	52,759	97
Broiler-Type Hatching		51,649	50,218	97
Egg-Type Hatching		2,509	2,541	101
Eggs per 100 Layers During Dec	Number			
All Layers		2,189	2,186	100
Table Egg Type		2,264	2,257	100
Hatching Egg Type		1,824	1,835	101
Broiler-Type Hatching		1,797	1,808	101
Egg-Type Hatching		2,391	2,361	99
Eggs Produced During Dec	Million			
All Layers		6,958	6,895	99
Table Egg Type		5,970	5,927	99
Hatching Egg Type		988	968	98
Broiler-Type Hatching		928	908	98
Egg-Type Hatching		60	60	100
		2002	2003	2003 as % of 2002
Layers on Jan 1	1,000			
All Layers		318,306	315,209	99
Table Egg Type		263,715	261,794	99
Hatching Egg Type		54,591	53,415	98
Broiler-Type Hatching		52,094	50,842	98
Egg-Type Hatching		2,497	2,573	103
Eggs per 100 Layers on Jan 1	Number			
All Layers		69.8	69.8	100
Table Egg Type		72.1	72.0	100
Hatching Egg Type		58.9	59.0	100
Broiler-Type Hatching		57.9	58.1	100
Egg-Type Hatching		78.1	77.6	99
Forced Molt Layers on Jan 1	Percent			
Percent Being Molted		4.0	4.3	108
Percent with Molt Completed		22.6	23.7	105
Layers Sold for Slaughter During Dec	1,000	12,651	13,411	106
Layers Rendered, Died, Destroyed, Composted or Disappeared For Any Reason During Dec	1,000	4,232	5,536	131
Pullets Less Than 20 Weeks of Age, Jan 1	1,000	88,740	85,512	96
Pullets Added During Dec <sup>2</sup>	1,000	20,403	19,502	96

<sup>1</sup> The 30 States are listed in the table on page 8.

<sup>2</sup> Pullet chicks one day old added to pullet flocks.

**Layers and Eggs: Layers on Hand and Eggs Produced by State  
and United States, During November 2001-02**

State	Table Egg Layers in Flocks 30,000 and Above		All Layers <sup>1</sup>		Eggs per 100 for All Layers <sup>1</sup>	
	2001	2002	2001	2002	2001	2002
	<i>1,000</i>	<i>1,000</i>	<i>1,000</i>	<i>1,000</i>	<i>Number</i>	<i>Number</i>
AL	2,729	2,316	10,279	9,692	1,848	1,826
AR	4,955	4,758	14,755	14,645	1,877	1,857
CA	23,136	22,446	23,749	23,059	2,169	2,190
CO	3,036	3,468	3,550	3,980	2,113	2,261
CT	3,027	3,010	3,073	3,062	2,310	2,253
FL	10,099	10,155	10,841	10,806	2,191	2,165
GA	12,287	10,825	21,830	20,122	2,080	2,092
HI	515	489	563	534	1,741	1,835
IL	3,438	3,240	3,670	3,480	2,262	2,356
IN	22,002	22,479	22,695	23,189	2,172	2,191
IA	33,987	37,203	34,806	37,961	2,195	2,221
ME	3,962	4,169	4,023	4,220	2,187	1,777
MD	2,920	3,086	3,236	3,285	2,410	2,405
MI	6,408	6,447	6,659	6,698	2,223	2,239
MN	11,590	10,770	12,270	11,422	2,029	2,162
MS	1,823	1,848	6,630	6,726	1,931	1,933
MO	5,426	5,330	6,858	6,746	2,187	2,268
NE	11,447	11,454	11,547	11,554	2,070	2,138
NY	3,675	3,591	3,966	3,831	2,269	2,375
NC	3,290	3,495	11,174	10,768	1,870	1,922
OH	29,536	30,151	30,123	30,645	2,184	2,105
OK	1,812	2,023	3,826	4,138	1,882	1,861
OR	2,746	2,637	2,917	2,801	2,297	2,356
PA	22,555	22,699	23,950	24,042	2,267	2,275
SC	4,827	4,263	5,809	5,255	2,290	2,150
SD	2,168	2,144	2,368	2,344	2,111	1,877
TX	14,633	14,391	18,915	18,707	2,115	2,160
VA	1,492	1,276	3,273	3,035	1,894	2,043
WA	5,028	5,084	5,101	5,157	2,215	2,191
WI	4,134	3,760	4,721	4,312	2,415	2,250
30 Sts	258,683	259,007	317,177	316,216	2,131	2,137
Oth Sts <sup>2</sup>	15,286	15,972	21,189	21,592	2,110	2,167
US	273,969	274,979	338,366	337,808	2,130	2,139

<sup>1</sup> Includes all layers and eggs produced in both table egg and hatching egg flocks regardless of size.

<sup>2</sup> Estimates for individual States are not available.



**Layers and Eggs: Layers on Hand and Eggs Produced by State  
and United States, During December 2001-02**

State	Table Egg Layers in Flocks 30,000 and Above		All Layers <sup>1</sup>		Eggs per 100 for All Layers <sup>1</sup>	
	2001	2002	2001	2002	2001	2002
	<i>1,000</i>	<i>1,000</i>	<i>1,000</i>	<i>1,000</i>	<i>Number</i>	<i>Number</i>
AL	2,828	2,350	10,443	9,778	1,915	1,872
AR	4,979	4,745	14,906	14,541	1,885	1,926
CA	23,307	21,666	23,932	22,284	2,215	2,257
CO	3,037	3,488	3,546	3,990	2,256	2,307
CT	3,091	3,015	3,144	3,069	2,411	2,476
FL	10,149	9,929	10,881	10,534	2,261	2,174
GA	12,012	10,775	21,489	20,005	2,066	2,149
HI	490	491	552	532	1,866	1,880
IL	3,389	3,181	3,620	3,411	2,210	2,433
IN	21,582	22,378	22,303	23,035	2,237	2,236
IA	34,671	36,827	35,487	37,540	2,263	2,280
ME	3,810	4,224	3,865	4,276	2,323	1,707
MD	3,089	3,004	3,418	3,238	2,458	2,440
MI	6,390	6,542	6,641	6,793	2,214	2,238
MN	11,395	10,870	12,103	11,473	2,173	2,144
MS	1,935	1,845	6,821	6,715	1,979	2,010
MO	5,407	5,376	6,839	6,858	2,223	2,304
NE	11,504	11,425	11,604	11,525	2,085	2,161
NY	3,543	3,410	3,781	3,648	2,486	2,467
NC	3,216	3,401	11,160	10,612	1,935	2,026
OH	29,639	30,152	30,196	30,663	2,269	2,182
OK	1,920	2,019	3,987	4,269	1,956	1,921
OR	2,737	2,679	2,908	2,857	2,338	2,345
PA	22,448	23,242	23,820	24,654	2,317	2,336
SC	4,739	4,232	5,684	5,284	2,252	2,101
SD	2,166	2,141	2,366	2,357	2,156	1,994
TX	14,930	14,390	19,291	18,761	2,198	2,159
VA	1,490	1,330	3,340	3,268	1,976	2,020
WA	4,999	5,072	5,077	5,149	2,305	2,253
WI	4,050	3,752	4,637	4,261	2,523	2,394
30 Sts	258,942	257,951	317,841	315,380	2,189	2,186
Oth Sts <sup>2</sup>	15,339	16,201	21,264	22,018	2,173	2,203
US	274,281	274,152	339,105	337,398	2,188	2,187

<sup>1</sup> Includes all layers and eggs produced in both table egg and hatching egg flocks regardless of size.

<sup>2</sup> Estimates for individual States are not available.

**Egg Production: By Type, State, and United States,  
November 2001-02**

State	Total Production		Table Eggs <sup>1</sup>		Hatching Eggs <sup>1</sup>	
	2001	2002	2001	2002	2001	2002
	<i>Million Eggs</i>	<i>Million Eggs</i>	<i>Million Eggs</i>	<i>Million Eggs</i>	<i>Million Eggs</i>	<i>Million Eggs</i>
AL	190	177	60	52	130	125
AR	277	272	111	105	166	167
CA	515	505				
CO	75	90				
CT	71	69				
FL	237	234	225	223	12	11
GA	454	421	279	248	175	173
HI	9.8	9.8	9.8	9.8	0	0
IL	83	82	80	79	3	3
IN	493	508	481	495	12	13
IA	764	843				
ME	88	75				
MD	78	79	72	76	6	3
MI	148	150				
MN	249	247	241	238	8	9
MS	128	130	43	43	85	87
MO	150	153				
NE	239	247	239	247	0	0
NY	90	91				
NC	209	207	78	81	131	126
OH	658	645				
OK	72	77	42	46	30	31
OR	67	66	66	65	1	1
PA	543	547	527	532	16	15
SC	133	113	115	96	18	17
SD	50	44	50	44	0	0
TX	400	404				
VA	62	62	34	31	28	31
WA	113	113				
WI	114	97				
30 Sts	6,760	6,758	5,807	5,816	953	941
Oth Sts <sup>2</sup>	447	468	363	388	83	79
US	7,207	7,226	6,170	6,204	1,036	1,020

<sup>1</sup> Data by type of flock not shown for some States to avoid disclosing individual operations.

<sup>2</sup> Estimates for individual States are not available.

**Egg Production: By Type, State, and United States,  
December 2001-02**

State	Total Production		Table Eggs <sup>1</sup>		Hatching Eggs <sup>1</sup>	
	2001	2002	2001	2002	2001	2002
	<i>Million Eggs</i>	<i>Million Eggs</i>	<i>Million Eggs</i>	<i>Million Eggs</i>	<i>Million Eggs</i>	<i>Million Eggs</i>
AL	200	183	64	53	136	130
AR	281	280	115	108	166	172
CA	530	503				
CO	80	92				
CT	76	76				
FL	246	229	231	219	15	10
GA	444	430	265	257	179	173
HI	10.3	10.0	10.3	10.0	0	0
IL	80	83	77	80	3	3
IN	499	515	486	503	13	12
IA	803	856				
ME	90	73				
MD	84	79	79	76	5	3
MI	147	152				
MN	263	246	254	239	9	7
MS	135	135	45	45	90	90
MO	152	158				
NE	242	249	242	249	0	0
NY	94	90				
NC	216	215	80	84	136	131
OH	685	669				
OK	78	82	45	48	33	34
OR	68	67	67	65	1	2
PA	552	576	536	559	16	17
SC	128	111	110	93	18	18
SD	51	47	51	47	0	0
TX	424	405				
VA	66	66	34	32	32	34
WA	117	116				
WI	117	102				
30 Sts	6,958	6,895	5,970	5,927	988	968
Oth Sts <sup>2</sup>	462	485	373	399	88	85
US	7,420	7,380	6,343	6,326	1,076	1,053

<sup>1</sup> Data by type of flock not shown for some States to avoid disclosing individual operations.

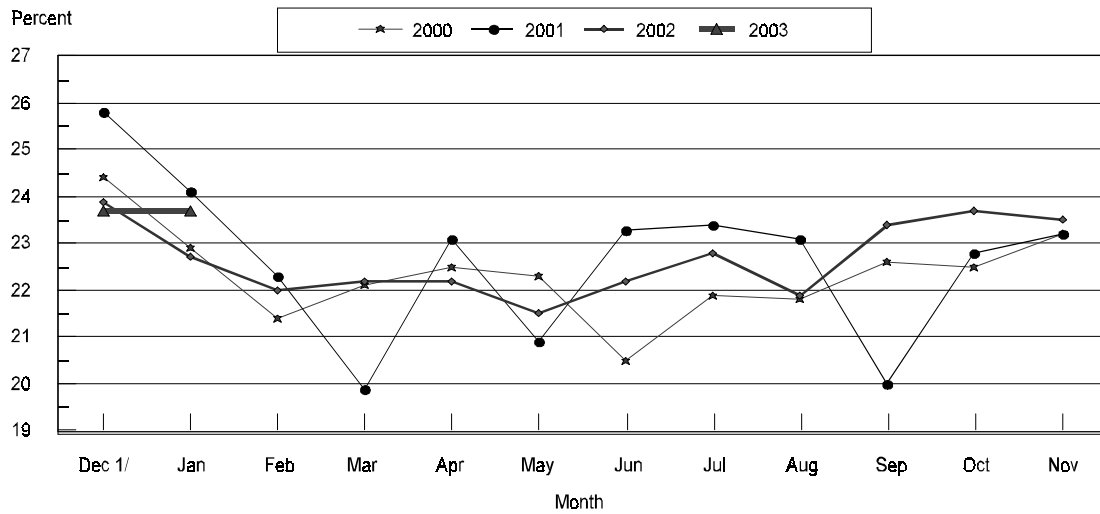
<sup>2</sup> Estimates for individual States are not available.

**Forced Molt: Percent of All Layers by Month,  
United States, 2002-03<sup>1</sup>**

Month	Percent Being Molted		Percent with Molt Completed	
	2002	2003	2002	2003
	<i>Percent</i>	<i>Percent</i>	<i>Percent</i>	<i>Percent</i>
Jan	4.1	4.4	22.7	23.7
Feb	4.6		22.0	
Mar	3.7		22.2	
Apr	3.6		22.2	
May	5.7		21.5	
Jun	4.2		22.2	
Jul	3.7		22.8	
Aug	4.6		21.9	
Sep	4.2		23.4	
Oct	4.6		23.7	
Nov	3.8		23.5	
Dec	2.7		23.7	

<sup>1</sup> As of first of month.

**All Layers: United States  
Percent Molt Completed, 2000 - 2003  
First of Month**



1/ Previous year

**Forced Molt: Percent of All Layers by State  
and United States, January 2002-03 <sup>1</sup>**

State	Percent Being Molted		Percent with Molt Completed	
	2002	2003	2002	2003
	<i>Percent</i>	<i>Percent</i>	<i>Percent</i>	<i>Percent</i>
AL	3.0	1.0	4.5	10.5
AR	1.0	0.5	11.0	12.0
CA	2.0	3.0	32.0	37.0
CO	5.0	3.0	27.5	23.0
CT	0.0	0.0	0.5	0.5
FL	2.0	2.5	33.0	31.5
GA	5.0	3.5	13.0	18.5
HI	3.5	7.5	40.0	52.5
IL	18.0	1.5	21.5	34.0
IN	4.5	3.5	35.0	33.5
IA	5.0	8.5	30.5	30.5
ME	0.0	0.0	0.0	1.5
MD	7.0	2.5	25.5	48.5
MI	3.0	6.5	45.0	29.0
MN	4.5	9.0	29.0	22.5
MS	2.0	1.0	10.5	12.0
MO	6.0	2.5	16.0	22.0
NE	7.5	9.0	25.5	21.5
NY	0.0	1.5	4.5	7.0
NC	0.5	1.0	7.0	11.0
OH	4.0	4.5	20.5	22.0
OK	0.0	0.0	3.0	7.0
OR	2.5	3.5	31.5	35.0
PA	5.0	2.5	21.0	16.5
SC	4.0	2.5	24.5	27.5
SD	5.0	4.0	32.5	29.5
TX	4.0	6.5	17.5	22.5
VA	0.5	1.5	15.5	14.5
WA	11.0	10.5	42.5	48.0
WI	3.5	8.5	31.5	36.0
30 Sts	4.0	4.3	22.6	23.7
Oth Sts <sup>2</sup>	5.8	6.1	24.3	23.7
US	4.1	4.4	22.7	23.7

<sup>1</sup> As of first of month.

<sup>2</sup> Estimates for individual States are not available.

**Hatchery Production: Eggs in Incubators, Chicks Hatched,  
and Placements by Type, United States, December-January 2002-03**

Item	2002	2003	2003 as % of 2002
	<i>1,000</i>	<i>1,000</i>	<i>Percent</i>
<b>Egg-Type</b>			
Eggs in Incubators on Jan 1	31,499	30,117	96
Chicks Hatched During Dec <sup>1</sup>	31,657	32,153	102
Chicks Hatched Jan thru Dec <sup>1</sup>	451,813	420,785	93
Pullets Hatched During Jan for Intended Placements in Hatchery Supply Flocks	206	187	91
7-18 Month Earlier <sup>2</sup>	3,132	3,014	96
<b>Broiler-Type</b>			
Eggs in Incubators on Jan 1	638,208	623,171	98
Chicks Hatched During Dec <sup>1</sup>	769,731	753,633	98
Chicks Hatched Jan thru Dec <sup>1</sup>	9,006,556	9,074,612	101
Pullets Hatched During Jan for Intended Placements in Hatchery Supply Flocks	6,577	6,475	98
7-15 Months Earlier <sup>3</sup>	60,397	62,310	103

<sup>1</sup> Previous year.

<sup>2</sup> 2002 includes pullet chicks hatched Jun 2001 through May 2002.

<sup>3</sup> 2002 includes pullet chicks hatched Sep 2001 through May 2002.

**Egg-Type Eggs in Incubators: By Region and United States,  
January 1, 2002-03**

Geographic Division	2002	2003	2003 as % of 2002
	<i>1,000</i>	<i>1,000</i>	<i>Percent</i>
North Atlantic	4,708	4,313	92
E North Central	6,663	5,889	88
W North Central	6,357	6,216	98
South Atlantic	4,442	2,937	66
South Central	4,918	5,721	116
West	4,411	5,041	114
<b>US</b>	<b>31,499</b>	<b>30,117</b>	<b>96</b>

**Regional Listing:**

North Atlantic = CT, ME, MA, NH, NJ, NY, PA, RI, VT.

E North Central = IL, IN, MI, OH, WI.

W North Central = IA, KS, MN, MO, NE, ND, SD.

South Atlantic = DE, FL, GA, MD, NC, SC, VA, WV.

South Central = AL, AR, KY, LA, MS, OK, TN, TX.

West = AK, AZ, CA, CO, HI, ID, MT, NM, NV, OR, UT, WA, WY.

**Egg-Type Chicks Hatched: By State and United States,  
December 2001-02**

State	December			Jan-Dec		
	2001	2002	2002 as % of 2001	2001	2002	2002 as % of 2001
	<i>1,000</i>	<i>1,000</i>	<i>Percent</i>	<i>1,000</i>	<i>1,000</i>	<i>Percent</i>
AR	651	716	110	9,588	9,671	101
FL	998	700	70	10,814	6,988	65
GA	2,269	2,319	102	25,494	25,924	102
IN	4,153	4,864	117	69,416	57,862	83
IA	4,414	5,228	118	64,463	63,187	98
MN	1,095	1,493	136	19,000	17,840	94
PA	4,565	4,349	95	63,434	51,306	81
Oth Sts <sup>1</sup>	13,512	12,484	92	189,604	188,007	99
US	31,657	32,153	102	451,813	420,785	93

<sup>1</sup> Not published separately to avoid disclosing data for individual operations.

**Egg-Type Chicks Hatched: By Month, United States, 2000-02**

Month	By Months				Cumulative			
	2000	2001	2002	2002 as % of 2001	2000	2001	2002	2002 as % of 2001
	<i>1,000</i>	<i>1,000</i>	<i>1,000</i>	<i>Percent</i>	<i>1,000</i>	<i>1,000</i>	<i>1,000</i>	<i>Percent</i>
Jan	34,181	36,706	35,533	97	34,181	36,706	35,533	97
Feb	34,659	37,816	34,326	91	68,840	74,522	69,859	94
Mar	38,877	40,993	36,717	90	107,717	115,515	106,576	92
Apr	36,653	42,768	38,212	89	144,370	158,283	144,788	91
May	41,185	42,636	38,944	91	185,555	200,919	183,732	91
Jun	37,268	40,806	35,292	86	222,823	241,725	219,024	91
Jul	33,240	38,640	35,218	91	256,063	280,365	254,242	91
Aug	34,328	34,978	35,877	103	290,391	315,343	290,119	92
Sep	36,325	36,916	35,391	96	326,716	352,259	325,510	92
Oct	36,080	35,816	32,044	89	362,796	388,075	357,554	92
Nov	32,438	32,081	31,078	97	395,234	420,156	388,632	92
Dec	35,178	31,657	32,153	102	430,412	451,813	420,785	93

**Intended Placements: Egg-Type Pullet Chicks for Hatchery Supply  
Flocks by Month and Total, United States, 2000-02<sup>1</sup>**

Month	Pullet Chicks Hatched			2002 as % of 2001	Cumulative Potential Placements Relative to Current Supply Flocks 7-18 Months Earlier <sup>2</sup>		
	2000	2001	2002		2001	2002	2003
	<i>1,000</i>	<i>1,000</i>	<i>1,000</i>	<i>Percent</i>	<i>1,000</i>	<i>1,000</i>	<i>1,000</i>
Jan	212	236	228	97	3,129	3,158	2,974
Feb	251	214	247	115	3,191	3,205	2,916
Mar	286	284	237	83	3,090	3,239	2,886
Apr	309	311	295	95	3,096	3,225	2,926
May	343	315	319	101	3,057	3,134	2,962
Jun	235	261	221	85	3,103	3,087	2,924
Jul	293	340	282	83	3,173	3,048	2,905
Aug	217	251	221	88	3,197	3,040	
Sep	233	219	259	118	3,160	3,073	
Oct	241	150	186	124	3,158	3,026	
Nov	308	261	223	85	3,160	3,010	
Dec	245	206	187	91	3,132	3,014	
Total	3,173	3,048	2,905	95			

<sup>1</sup> Reported by leading breeders. Coverage may not be 100 percent. Includes expected pullet chicks from eggs sold during the preceding month at the rate of 125 pullet chicks per 30 dozen case of eggs.

<sup>2</sup> For December 2002, includes breeder pullet chicks hatched Jun 2001 through May 2002. The 7-18 months represent the first laying cycle. Molting and additional laying cycles will increase the cumulative potential placements.

**Broiler-Type Eggs in Incubators: By Region  
and United States, January 1, 2002-03**

Geographic Division	2002	2003	2003 as % of 2002
	<i>1,000</i>	<i>1,000</i>	<i>Percent</i>
North Atlantic	12,197	11,758	96
E North Central	7,496	7,843	105
W North Central	20,815	19,202	92
South Atlantic	235,615	229,754	98
South Central	340,074	332,073	98
West	22,011	22,541	102
US	638,208	623,171	98



**Broiler-Type Chicks Hatched: By State  
and United States, December 2001-02**

State	December			Jan-Dec		
	2001	2002	2002 as % of 2001	2001	2002	2002 as % of 2001
	<i>1,000</i>	<i>1,000</i>	<i>Percent</i>	<i>1,000</i>	<i>1,000</i>	<i>Percent</i>
AL	107,548	102,392	95	1,236,858	1,245,917	101
AR	111,607	107,716	97	1,283,862	1,286,467	100
DE	12,719	12,642	99	154,587	149,944	97
FL	8,612	7,748	90	103,592	98,817	95
GA	113,555	110,347	97	1,331,800	1,337,318	100
KY	22,482	23,945	107	266,768	280,014	105
MD	31,445	34,842	111	403,011	413,365	103
MS	68,571	68,360	100	797,908	812,454	102
NC	67,404	64,968	96	785,479	794,413	101
OK	23,116	22,865	99	264,094	272,392	103
PA	13,549	12,688	94	155,182	153,826	99
SC	16,491	16,287	99	200,412	197,274	98
TX	54,206	55,602	103	632,879	653,253	103
VA	24,258	22,935	95	284,164	274,393	97
CA, LA, MO, TN, & WV	74,267	70,560	95	856,213	851,211	99
19 Sts <sup>1</sup>	749,830	733,897	98	8,756,809	8,821,058	101
Oth Sts <sup>2</sup>	19,901	19,736	99	249,747	253,554	102
US	769,731	753,633	98	9,006,556	9,074,612	101

<sup>1</sup> States in the weekly hatchery production estimating program.

<sup>2</sup> Not published separately to avoid disclosing data for individual operations.

**Broiler-Type Chicks Hatched: By Month, United States, 2000-02**

Month	By Months				Cumulative			
	2000	2001	2002	2002 as % of 2001	2000	2001	2002	2002 as % of 2001
	<i>1,000</i>	<i>1,000</i>	<i>1,000</i>	<i>Percent</i>	<i>1,000</i>	<i>1,000</i>	<i>1,000</i>	<i>Percent</i>
Jan	753,931	745,093	775,669	104	753,931	745,093	775,669	104
Feb	706,216	680,823	702,576	103	1,460,147	1,425,916	1,478,245	104
Mar	761,764	773,760	790,342	102	2,221,911	2,199,676	2,268,587	103
Apr	749,106	755,455	764,982	101	2,971,017	2,955,131	3,033,569	103
May	777,624	785,704	798,315	102	3,748,641	3,740,835	3,831,884	102
Jun	750,528	766,534	776,397	101	4,499,169	4,507,369	4,608,281	102
Jul	742,823	769,449	781,421	102	5,241,992	5,276,818	5,389,702	102
Aug	743,979	771,550	779,803	101	5,985,971	6,048,368	6,169,505	102
Sep	704,944	738,355	741,140	100	6,690,915	6,786,723	6,910,645	102
Oct	721,249	747,495	720,310	96	7,412,164	7,534,218	7,630,955	101
Nov	684,995	702,607	690,024	98	8,097,159	8,236,825	8,320,979	101
Dec	749,026	769,731	753,633	98	8,846,185	9,006,556	9,074,612	101

**Intended Placements: Broiler-Type Pullet Chicks for Hatchery  
Supply Flocks by Month and Total, 2000-02 <sup>1</sup>**

Month	Pullet Chicks Hatched			2002 as % of 2001	Cumulative Potential Placements Relative to Current Supply Flocks 7-15 Months Earlier <sup>2</sup>		
	2000	2001	2002		2001	2002	2003
	<i>1,000</i>	<i>1,000</i>	<i>1,000</i>	<i>Percent</i>	<i>1,000</i>	<i>1,000</i>	<i>1,000</i>
US Place- ments							
Jan	6,861	6,685	6,660	100	63,304	60,750	62,869
Feb	7,001	6,748	7,275	108	62,493	60,382	62,767
Mar	7,310	6,752	6,775	100	62,797	60,771	62,955
Apr	6,764	6,398	6,814	107	62,267	60,989	63,069
May	7,435	7,117	7,597	107	62,100	61,008	62,674
Jun	6,829	6,822	7,206	106	62,204	61,521	62,337
Jul	6,310	6,326	6,602	104	61,323	61,346	62,037
Aug	7,288	7,494	7,449	99	61,244	61,608	
Sep	6,469	6,647	6,691	101	60,557	61,766	
Oct	6,694	6,704	6,265	93	60,480	61,719	
Nov	7,105	7,261	6,938	96	60,568	62,207	
Dec	6,429	6,577	6,475	98	60,397	62,310	
Annual Total	82,495	81,531	82,747	101			
Total Place- ments <sup>3</sup>							
Jan	8,069	7,615	8,084	106			
Feb	8,302	8,275	8,491	103			
Mar	8,798	8,325	7,997	96			
Apr	8,522	7,915	8,119	103			
May	8,917	8,647	8,982	104			
Jun	8,201	8,220	8,802	107			
Jul	7,621	7,687	8,083	105			
Aug	8,657	9,133	8,913	98			
Sep	8,042	8,047	8,058	100			
Oct	8,260	7,848	7,438	95			
Nov	8,702	9,017	8,202	91			
Dec	7,614	8,119	8,015	99			
Annual Total	99,705	98,848	99,184	100			

<sup>1</sup> Reported by leading breeders. Coverage may not be 100 percent. Includes expected pullet chicks from eggs sold during the preceding month at the rate of 125 pullet chicks per 30 dozen case of eggs.

<sup>2</sup> For Dec 2002, includes breeder pullet chicks hatched Sep 2001 through May 2002.

<sup>3</sup> U.S. production of intended placements worldwide.

## Procedures and Reliability

**Data Sources:** Primary data for the "**Chickens and Eggs**" report are from weekly and/or monthly questionnaires sent to producers. An attempt is made to collect information for layer and egg estimates from each known contractor and independent producer who has over 30,000 table egg layers. Coverage for operations with less than 30,000 table egg layers are estimated each month based on data reported in December. Approximately 900 contractors, independent egg producers, and started pullet operations are contacted each month. All known hatcheries, approximately 330, are contacted for information on a weekly and/or monthly basis.

**Revisions:** The previous month's estimates are subject to revision if late reports or corrected data indicates a different level. Additionally, revisions needed after the monthly report will be made at the end of the marketing year and published in the annual summaries of "**Chickens and Eggs Summary**" and "**Hatchery Production**".

**Procedures and Reliability:** Operations are mailed a questionnaire and given adequate time to respond by mail. Those that do not respond are phoned. Great care is exercised to ensure that all operations are accounted for during each survey period. However, there are usually missing reports that must be accounted for in the estimates.

Sound statistical methodology is employed to derive estimates from the reported data. All data are checked for unusual values. All operations' data are compared to their own past operating profiles and also to trends from other operations. Data for missing operations are estimated based on similar operations or historical data. Survey data are subject to non-sampling errors such as omissions and mistakes in reporting and in processing. While these errors cannot be measured directly, they are minimized by reviewing all data for consistency and reasonableness.

Egg-type chicks hatched are comprised of all chicks of egg-type domesticated breeds including males and chicks destined for hatchery supply flocks and research purposes. The relationship of chicks hatched to chicken inventory and poultry marketings is carefully monitored. The disposition of egg-type chicks hatched prior to placement into the laying flock can vary significantly, which can make comparisons to changes in layer inventory inconsistent over time.

Intended placement data reported by leading breeders include pullet chicks expected from eggs sold the preceding month. The breeders in this report account for a large percentage of replacement pullets for hatchery supply flocks. Production of replacement pullets by these breeders indicates the number of pullets available to hatchery supply flocks several months before the pullets will actually move into the flocks. "Hatchery Supply Flocks" include all generations of layers which could lay eggs to supply a hatchery. This includes the generations of parents, grandparents, great-grandparents, pedigree, etc. Also included are research flocks, vaccine flocks, and specific pathogen-free flocks. The broiler cumulative potential placements are a moving total of the intended placements 7-15 months earlier. The egg-type cumulative potential placements of 7-18 months represent the first laying cycle. Molting and additional laying cycles will increase the cumulative potential placements of egg-type hatching flocks.

The next "Chickens and Eggs" report will be released at 3 p.m. ET on February 24, 2003.

The United States Department of Agriculture (USDA) prohibits discrimination in all its programs on the basis of race, color, national origin, gender, religion, age, disability, political beliefs, sexual orientation, and marital or family status. (Not all prohibited bases apply to all programs.) Persons with disabilities who require alternative means for communication of program information (braille, large print, audiotape, etc.) should contact the USDA's TARGET Center at 202-720-2600 (voice and TDD).

To file a complaint of discrimination, write USDA, Director, Office of Civil Rights, Room 326-W, Whitten Building, 1400 Independence Avenue, SW, Washington, D.C., 20250-9410, or call 202-720-5964 (voice or TDD). USDA is an equal opportunity provider and employer.

## **ACCESS TO REPORTS!!**

---

For your convenience, there are several ways to obtain NASS reports, data products, and services:

### **INTERNET ACCESS**

All NASS reports are available free of charge on the worldwide Internet. For access, connect to the Internet and go to the NASS Home Page at: <http://www.usda.gov/nass/>. Select "Today's Reports" or Publications and then Reports Calendar or Publications and then Search, by Title or Subject.

### **E-MAIL SUBSCRIPTION**

All NASS reports are available by subscription free of charge direct to your e-mail address. Starting with the NASS Home Page at <http://www.usda.gov/nass/>, click on **Publications**, then click on the **Subscribe by E-mail** button which takes you to the page describing e-mail delivery of reports. Finally, click on **Go to the Subscription Page** and follow the instructions.

### **AUTOFAX ACCESS**

NASSFax service is available for some reports from your fax machine. Please call 202-720-2000, using the handset attached to your fax. Respond to the voice prompts. Document 0411 is a list of available reports.

-----

### **PRINTED REPORTS OR DATA PRODUCTS**

**CALL OUR TOLL-FREE ORDER DESK: 800-999-6779 (U.S. and Canada)**  
**Other areas, please call 703-605-6220      FAX: 703-605-6900**  
**(Visa, MasterCard, check, or money order acceptable for payment.)**

-----

### **ASSISTANCE**

For **assistance** with general agricultural statistics or further information about NASS or its products or services, contact the **Agricultural Statistics Hotline** at **800-727-9540**, 7:30 a.m. to 4:00 p.m. ET, or e-mail: [nass@nass.usda.gov](mailto:nass@nass.usda.gov).

---

# Competing in the 21st Century

---

## Agricultural Outlook Forum 2003



---

**February 20-21, 2003**

**Crystal Gateway**

**Marriott Hotel**

**Arlington, Virginia**

**2003 Commodity Prospects**  
**Emerging Export Competitors**  
**Farming under New Programs**  
**Coping with Regulations**  
**Shifting consumer Preferences**  
**Ensuring Food Safety**  
**Impact of El Nino**

Sharpen your strategic focus at USDA's 79th annual Agricultural Outlook Forum. Note experts, industry leaders and producers will discuss many facets of competing in domestic and world markets.

The program will examine growing competition from Central and Eastern Europe, Brazil and Asia, as well as progress in WTO negotiations.

Focus sessions will highlight many challenges producers face in the competitive arena, ranging from the growing complexity and cost of regulation, to dealing with food safety and changing eating habits.

As always, leading analysts will be on hand to debate planting, trade and price prospects for farm commodities for the year ahead. Attendees will receive new 10-year commodity projections from USDA.

Networking opportunities abound at the Forum, which attracted 1,400 attendees last February. Register now for the best value. See full details at [www.usda.gov/oce](http://www.usda.gov/oce).

[www.usda.gov/oce](http://www.usda.gov/oce) [agforum@oce.usda.gov](mailto:agforum@oce.usda.gov) (877) 891-2208 toll free