

Chickens and Eggs

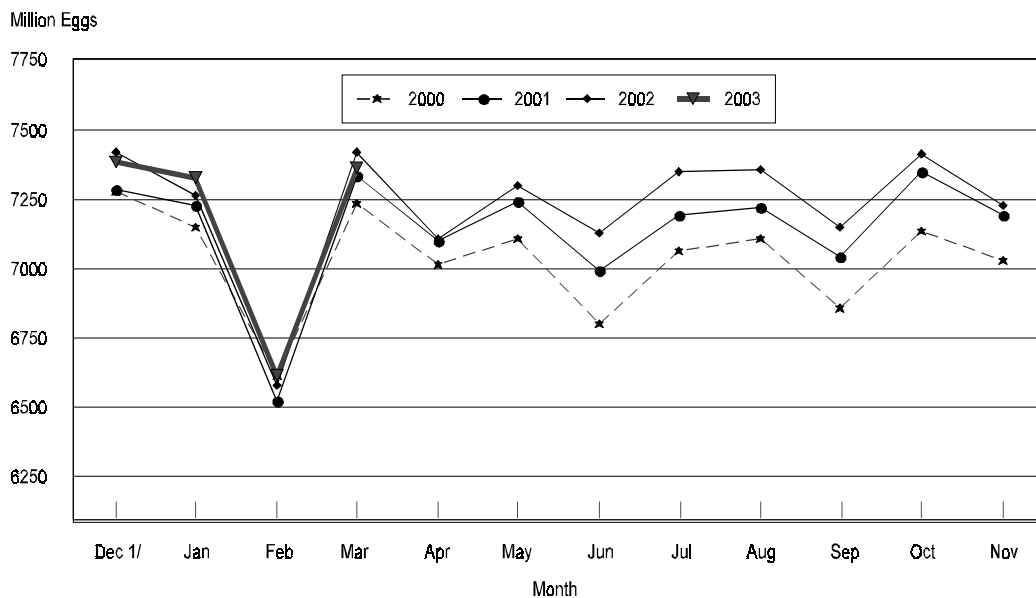
Released April 22, 2003, by the National Agricultural Statistics Service (NASS), Agricultural Statistics Board, U.S. Department of Agriculture. For information on "Chickens and Eggs" call Tom Kruchten at (202) 690-4870, for "Hatch" call Jody Roberts at (202) 690-8632, office hours 7:30 a.m. to 4:00 p.m. ET.

March Egg Production Down 1 Percent

U.S. egg production totaled 7.36 billion during March 2003, down 1 percent from last year. Production included 6.26 billion table eggs and 1.11 billion hatching eggs, of which 1.04 billion were broiler-type and 64.0 million were egg-type. The total number of layers during March 2003 averaged 338 million, up slightly from a year earlier. March egg production per 100 layers was 2,181 eggs, down 1 percent from March 2002.

March 2003 contained 21 weekdays, and five Saturdays, the same as March 2002.

All Egg Production By Months United States, 2000 - 2003



1/ Previous Year

All layers in the U.S. on April 1, 2003, totaled 338 million, up slightly from a year ago. The 338 million layers consisted of 278 million layers producing table or commercial type eggs, 57.3 million layers producing broiler-type hatching eggs, and 2.63 million layers producing egg-type hatching eggs. Rate of lay per day on April 1, 2003, averaged 70.8 eggs per 100 layers, down slightly from a year ago.

Laying flocks in the 30 major egg producing States produced 6.87 billion eggs during March 2003, down 1 percent from a year ago. The average number of layers during March, at 315 million, was down slightly from a year ago.

Individual State estimates are available for the 30 major egg producing States. These States are listed on page 8 of this release and account for approximately 94 percent of the total U.S. egg production. Production for the other States are grouped into an "Other States" category and combined with the 30 States published individually to obtain a U.S. estimate. Individual State estimates for "Other States" are available annually in the "**Chickens and Eggs Summary**" report.

Egg-Type Chicks Hatched Down 1 Percent

Egg-type chicks hatched during March totaled 36.7 million, down 1 percent from March 2002. Eggs in incubators totaled 34.3 million on April 1, 2003, up 3 percent from a year ago.

Domestic placements of egg-type pullet chicks for future hatchery supply flocks by leading breeders totaled 315,000 during March 2003, up 33 percent from March 2002.

Broiler Hatch Down 2 Percent

The March 2003 hatch of broiler-type chicks, at 775 million, was down 2 percent from March of the previous year. There were 638 million eggs in incubators on April 1, 2003, down 1 percent from a year earlier.

Leading breeders placed 6.3 million broiler-type pullet chicks for future domestic hatchery supply flocks during March 2003, down 7 percent from March 2002.

**All Layers: Average Number on Hand During the Month,
United States, 2000-03**

Month	2000	2001	2002	2003
	<i>1,000 Layers</i>	<i>1,000 Layers</i>	<i>1,000 Layers</i>	<i>1,000 Layers</i>
Dec ¹	328,878	332,283	339,105	337,473
Jan	328,657	333,748	338,966	337,900
Feb	329,941	335,763	337,991	337,881
Mar	330,961	336,822	337,447	337,598
Apr	329,185	337,141	336,776	
May	326,288	335,163	335,865	
Jun	325,057	332,928	335,412	
Jul	325,663	332,244	335,498	
Aug	325,853	332,808	336,159	
Sep	326,337	335,276	337,264	
Oct	328,278	337,593	338,159	
Nov	330,830	338,366	337,808	

¹ December preceding year.

**Eggs: Production During the Month by Type,
United States, 2002-03**

Month	Total Eggs		Table Eggs		Hatching Eggs	
	2002	2003	2002	2003	2002	2003
	<i>Million Eggs</i>	<i>Million Eggs</i>	<i>Million Eggs</i>	<i>Million Eggs</i>	<i>Million Eggs</i>	<i>Million Eggs</i>
Dec ¹	7,420	7,381	6,343	6,325	1,076	1,055
Jan	7,264	7,329	6,170	6,246	1,093	1,082
Feb	6,581	6,618	5,592	5,629	988	988
Mar	7,417	7,363	6,312	6,256	1,104	1,107
Apr	7,105		6,016		1,089	
May	7,297		6,161		1,135	
Jun	7,126		6,037		1,089	
Jul	7,347		6,243		1,104	
Aug	7,356		6,263		1,093	
Sep	7,147		6,100		1,046	
Oct	7,412		6,345		1,067	
Nov	7,226		6,204		1,020	
During Year	86,698	28,691	73,786	24,456	12,904	4,232

¹ December preceding year.

**Layers and Eggs: Layers on Hand and Eggs Produced by Type,
and Forced Molt, United States, February-March 2002-03**

Item	Unit	2002	2003	2003 as % of 2002
Layers During Feb	1,000			
All Layers		337,991	337,881	100
Table Egg Type		278,289	278,380	100
Hatching Egg Type		59,702	59,501	100
Broiler-Type Hatching		57,053	56,831	100
Egg-Type Hatching		2,649	2,670	101
Eggs per 100 Layers During Feb	Number			
All Layers		1,947	1,959	101
Table Egg Type		2,009	2,022	101
Hatching Egg Type		1,655	1,660	100
Broiler-Type Hatching		1,630	1,636	100
Egg-Type Hatching		2,190	2,172	99
Eggs Produced During Feb	Million			
All Layers		6,581	6,618	101
Table Egg Type		5,592	5,629	101
Hatching Egg Type		988	988	100
Broiler-Type Hatching		930	930	100
Egg-Type Hatching		58	58	100
Layers on Mar 1	1,000			
All Layers		337,478	337,647	100
Table Egg Type		277,923	277,689	100
Hatching Egg Type		59,555	59,958	101
Broiler-Type Hatching		56,917	57,335	101
Egg-Type Hatching		2,638	2,623	99
Eggs per 100 Layers on Mar 1	Number			
All Layers		70.5	69.7	99
Table Egg Type		73.0	72.1	99
Hatching Egg Type		59.0	58.8	100
Broiler-Type Hatching		58.1	58.0	100
Egg-Type Hatching		78.7	77.8	99
Forced Molt Layers on Mar 1	Percent			
Percent Being Molted		3.7	3.3	89
Percent with Molt Completed		22.2	23.6	106
Layers Sold for Slaughter During Feb	1,000	14,491	13,712	95
Layers Rendered, Died, Destroyed, Composted or Disappeared For Any Reason During Feb	1,000	5,357	6,162	115
Pullets Less Than 20 Weeks of Age, Mar 1	1,000	95,814	94,592	99
Pullets Added During Feb ¹	1,000	22,621	21,348	94

¹ Pullet chicks one day old added to pullet flocks.

**Layers and Eggs: Layers on Hand and Eggs Produced by Type,
and Forced Molt, United States, March-April 2002-03**

Item	Unit	2002 ¹	2003	2003 as % of 2002
Layers During Mar	1,000			
All Layers		337,447	337,598	100
Table Egg Type		277,349	277,657	100
Hatching Egg Type		60,098	59,941	100
Broiler-Type Hatching		57,471	57,309	100
Egg-Type Hatching		2,627	2,632	100
Eggs per 100 Layers During Mar	Number			
All Layers		2,198	2,181	99
Table Egg Type		2,276	2,253	99
Hatching Egg Type		1,837	1,847	101
Broiler-Type Hatching		1,810	1,820	101
Egg-Type Hatching		2,436	2,432	100
Eggs Produced During Mar	Million			
All Layers		7,417	7,363	99
Table Egg Type		6,312	6,256	99
Hatching Egg Type		1,104	1,107	100
Broiler-Type Hatching		1,040	1,043	100
Egg-Type Hatching		64	64	100
Layers on Apr 1	1,000			
All Layers		337,376	337,502	100
Table Egg Type		276,756	277,600	100
Hatching Egg Type		60,620	59,902	99
Broiler-Type Hatching		58,015	57,275	99
Egg-Type Hatching		2,605	2,627	101
Eggs per 100 Layers on Apr 1	Number			
All Layers		71.1	70.8	100
Table Egg Type		73.6	73.2	99
Hatching Egg Type		59.4	59.7	101
Broiler-Type Hatching		58.6	58.8	100
Egg-Type Hatching		77.9	78.8	101
Forced Molt Layers, Apr 1	Percent			
Percent Being Molted		3.6	2.2	61
Percent with Molt Completed		22.2	24.4	110
Layers Sold for Slaughter During Mar	1,000	16,840	14,513	86
Layers Rendered, Died, Destroyed, Composted or Disappeared For Any Reason During Mar	1,000	4,669	5,692	122
Pullets Less Than 20 Weeks of Age, Apr 1	1,000	93,651	95,182	102
Pullets Added During Mar ²	1,000	23,472	23,696	101

¹ Revised.

² Pullet chicks one day old added to pullet flocks.

Layers and Eggs: Layers on Hand and Eggs Produced by Type, and Forced Molt, 30 Selected States, February-March, 2002-03¹

Item	Unit	2002	2003	2003 as % of 2002
Layers During Feb	1,000			
All Layers		317,043	315,574	100
Table Egg Type		262,048	260,867	100
Hatching Egg Type		54,995	54,707	99
Broiler-Type Hatching		52,443	52,122	99
Egg-Type Hatching		2,552	2,585	101
Eggs per 100 Layers During Feb	Number			
All Layers		1,944	1,959	101
Table Egg Type		2,006	2,019	101
Hatching Egg Type		1,651	1,663	101
Broiler-Type Hatching		1,625	1,638	101
Egg-Type Hatching		2,194	2,166	99
Eggs Produced During Feb	Million			
All Layers		6,164	6,182	100
Table Egg Type		5,256	5,272	100
Hatching Egg Type		908	910	100
Broiler-Type Hatching		852	854	100
Egg-Type Hatching		56	56	100
Layers on Mar 1	1,000			
All Layers		316,537	315,110	100
Table Egg Type		261,677	259,990	99
Hatching Egg Type		54,860	55,120	100
Broiler-Type Hatching		52,309	52,584	101
Egg-Type Hatching		2,551	2,536	99
Eggs per 100 Layers on Mar 1	Number			
All Layers		70.4	69.7	99
Table Egg Type		72.8	72.0	99
Hatching Egg Type		58.9	58.9	100
Broiler-Type Hatching		58.0	58.0	100
Egg-Type Hatching		79.2	77.8	98
Forced Molt Layers on Mar 1	Percent			
Percent Being Molted		3.7	3.4	92
Percent with Molt Completed		22.0	23.5	107
Layers Sold for Slaughter During Feb	1,000	13,246	12,606	95
Layers Rendered, Died, Destroyed, Composted or Disappeared For Any Reason During Feb	1,000	5,202	5,871	113
Pullets Less Than 20 Weeks of Age, Mar 1	1,000	90,080	88,253	98
Pullets Added During Feb ²	1,000	21,282	19,661	92

¹ The 30 States are listed in the table on page 8.

² Pullet chicks one day old added to pullet flocks.

Layers and Eggs: Layers on Hand and Eggs Produced by Type, and Forced Molt, 30 Selected States, March-April, 2002-03 ¹

Item	Unit	2002 ²	2003	2003 as % of 2002
Layers During Mar	1,000			
All Layers		316,421	314,877	100
Table Egg Type		261,038	259,830	100
Hatching Egg Type		55,383	55,047	99
Broiler-Type Hatching		52,844	52,503	99
Egg-Type Hatching		2,539	2,544	100
Eggs per 100 Layers During Mar	1,000			
All Layers		2,196	2,183	99
Table Egg Type		2,272	2,254	99
Hatching Egg Type		1,836	1,849	101
Broiler-Type Hatching		1,807	1,821	101
Egg-Type Hatching		2,442	2,437	100
Eggs Produced During Mar	Million			
All Layers		6,949	6,874	99
Table Egg Type		5,932	5,856	99
Hatching Egg Type		1,017	1,018	100
Broiler-Type Hatching		955	956	100
Egg-Type Hatching		62	62	100
Layers on Apr 1	1,000			
All Layers		316,274	314,610	99
Table Egg Type		260,387	259,654	100
Hatching Egg Type		55,887	54,956	98
Broiler-Type Hatching		53,370	52,416	98
Egg-Type Hatching		2,517	2,540	101
Eggs per 100 Layers on Apr 1	Number			
All Layers		71.1	71.0	100
Table Egg Type		73.7	73.3	99
Hatching Egg Type		59.3	59.9	101
Broiler-Type Hatching		58.4	58.9	101
Egg-Type Hatching		78.1	78.9	101
Forced Molt Layers, Apr 1	Percent			
Percent Being Molted		3.5	2.2	63
Percent with Molt Completed		21.9	24.5	112
Layers Sold for Slaughter During Mar	1,000	16,157	13,381	83
Layers Rendered, Died, Destroyed, Composted or Disappeared For Any Reason During Mar	1,000	4,452	5,423	122
Pullets Less Than 20 Weeks of Age, Apr 1	1,000	87,944	88,658	101
Pullets Added During Mar ³	1,000	22,597	21,401	95

¹ The 30 States are listed in the table on page 8.

² Revised.

³ Pullet chicks one day old added to pullet flocks.

**Layers and Eggs: Layers on Hand and Eggs Produced by State
and United States, During February 2002-03**

State	Table Egg Layers in Flocks 30,000 and Above		All Layers ¹		Eggs per 100 for All Layers ¹	
	2002	2003	2002	2003	2002	2003
	<i>1,000</i>	<i>1,000</i>	<i>1,000</i>	<i>1,000</i>	<i>Number</i>	<i>Number</i>
AL	2,708	2,419	10,567	9,975	1,732	1,724
AR	4,871	4,559	14,935	15,271	1,701	1,716
CA	23,485	20,485	24,037	21,104	1,956	1,981
CO	2,988	3,401	3,503	3,911	1,941	2,020
CT	3,100	2,951	3,157	3,010	2,208	1,927
FL	9,911	10,323	10,638	10,868	1,927	1,969
GA	11,460	11,028	20,928	20,375	1,821	1,850
HI	481	466	538	509	1,673	1,768
IL	3,218	3,506	3,457	3,735	1,938	1,928
IN	21,526	22,229	22,223	22,872	1,975	2,007
IA	35,418	36,954	36,236	37,738	2,037	2,009
ME	4,023	4,248	4,074	4,300	2,202	2,023
MD	2,890	2,934	3,154	3,153	2,061	2,062
MI	6,178	6,519	6,438	6,770	2,022	2,024
MN	11,582	10,745	12,322	11,350	2,069	2,141
MS	1,839	1,871	6,785	6,846	1,769	1,811
MO	5,498	5,453	6,923	6,861	1,993	2,055
NE	11,524	11,622	11,624	11,722	1,893	2,022
NY	3,749	3,429	3,960	3,670	2,197	2,125
NC	3,182	3,368	11,146	11,141	1,723	1,741
OH	29,545	29,632	30,068	30,133	1,979	1,958
OK	2,025	2,015	4,205	4,159	1,745	1,755
OR	2,507	2,690	2,701	2,868	2,147	2,127
PA	22,272	23,020	23,656	24,403	2,114	2,131
SC	4,451	4,099	5,497	5,267	1,892	2,013
SD	2,147	2,299	2,347	2,499	1,917	1,961
TX	14,504	14,257	18,943	18,720	1,863	1,939
VA	1,414	1,279	3,491	3,309	1,719	1,753
WA	5,037	4,878	5,118	4,959	2,052	1,976
WI	3,793	3,562	4,372	4,076	2,059	1,963
30 Sts	257,326	256,241	317,043	315,574	1,944	1,959
Oth Sts ²	15,069	16,382	20,948	22,307	1,991	1,955
US	272,395	272,623	337,991	337,881	1,947	1,959

¹ Includes all layers and eggs produced in both table egg and hatching egg flocks regardless of size.

² Estimates for individual States are not available.

**Layers and Eggs: Layers on Hand and Eggs Produced by State
and United States, During March 2002-03**

State	Table Egg Layers in Flocks 30,000 and Above		All Layers ¹		Eggs per 100 for All Layers ¹	
	2002	2003	2002	2003	2002	2003
	<i>1,000</i>	<i>1,000</i>	<i>1,000</i>	<i>1,000</i>	<i>Number</i>	<i>Number</i>
AL	2,578	2,360	10,410	9,856	1,912	1,928
AR	4,977	4,722	15,235	15,731	1,897	1,894
CA	23,491	19,605	24,082	20,179	2,201	2,220
CO	3,070	3,294	3,583	3,838	2,261	2,319
CT	3,045	2,929	3,100	2,986	2,445	2,210
FL	9,797	10,356	10,507	10,903	2,189	2,238
GA	10,864	11,287	20,420	20,734	2,120	2,088
HI	487	477	543	519	1,897	1,927
IL	3,288	3,440	3,523	3,669	2,214	2,262
IN	21,575	22,361	22,276	23,042	2,236	2,261
IA	35,723	37,298	36,536	38,062	2,277	2,183
ME	3,900	4,197	3,954	4,248	2,276	2,331
MD	3,002	2,667	3,233	2,858	2,289	2,344
MI	6,228	6,373	6,488	6,624	2,300	2,264
MN	11,240	10,825	11,970	11,435	2,297	2,256
MS	1,850	1,872	6,822	6,844	2,008	2,046
MO	5,513	5,513	6,904	6,950	2,216	2,273
NE	11,436	11,604	11,536	11,704	2,115	2,230
NY	3,651	3,476	3,876	3,723	2,503	2,391
NC	3,214	3,300	11,330	11,152	1,906	1,928
OH	29,712	29,152	30,226	29,650	2,250	2,175
OK	2,021	2,018	4,197	4,129	1,967	1,962
OR	2,510	2,619	2,702	2,785	2,295	2,226
PA	21,980	22,890	23,379	24,229	2,361	2,386
SC	4,383	4,196	5,411	5,334	2,181	2,268
SD	2,108	2,351	2,308	2,551	2,166	2,234
TX	14,498	14,333	18,971	18,784	2,240	2,215
VA	1,400	1,175	3,450	3,243	2,000	1,912
WA	4,997	4,873	5,078	4,954	2,324	2,160
WI	3,779	3,653	4,371	4,161	2,334	2,283
30 Sts	256,317	255,216	316,421	314,877	2,196	2,183
Oth Sts ²	15,139	16,696	21,026	22,721	2,226	2,152
US	271,456	271,912	337,447	337,598	2,198	2,181

¹ Includes all layers and eggs produced in both table egg and hatching egg flocks regardless of size.

² Estimates for individual States are not available.

**Egg Production: By Type, State, and United States,
February 2002-03**

State	Total Production		Table Eggs ¹		Hatching Eggs ¹	
	2002	2003	2002	2003	2002	2003
	<i>Million Eggs</i>	<i>Million Eggs</i>	<i>Million Eggs</i>	<i>Million Eggs</i>	<i>Million Eggs</i>	<i>Million Eggs</i>
AL	183	172	56	49	127	123
AR	254	262	97	91	157	171
CA	470	418				
CO	68	79				
CT	70	58				
FL	205	214	192	207	13	7
GA	381	377	222	221	159	156
HI	9.0	9.0	9.0	9.0	0	0
IL	67	72	64	68	3	4
IN	439	459	427	448	12	11
IA	738	758				
ME	90	87				
MD	65	65	61	62	4	3
MI	130	137				
MN	255	243	246	237	9	6
MS	120	124	38	40	82	84
MO	138	141				
NE	220	237	220	237	0	0
NY	87	78				
NC	192	194	68	72	124	122
OH	595	590				
OK	74	73	43	42	31	31
OR	58	61	56	59	2	2
PA	499	520	483	505	16	15
SC	104	106	88	88	16	18
SD	45	49	45	49	0	0
TX	353	363				
VA	60	58	26	24	34	34
WA	105	98				
WI	90	80				
30 Sts	6,164	6,182	5,256	5,272	908	910
Oth Sts ²	417	436	336	357	80	78
US	6,581	6,618	5,592	5,629	988	988

¹ Data by type of flock not shown for some States to avoid disclosing individual operations.

² Estimates for individual States are not available.

**Egg Production: By Type, State, and United States,
March 2002-03**

State	Total Production		Table Eggs ¹		Hatching Eggs ¹	
	2002	2003	2002	2003	2002	2003
	<i>Million Eggs</i>	<i>Million Eggs</i>	<i>Million Eggs</i>	<i>Million Eggs</i>	<i>Million Eggs</i>	<i>Million Eggs</i>
AL	199	190	57	54	142	136
AR	289	298	109	107	180	191
CA	530	448				
CO	81	89				
CT	76	66				
FL	230	244	217	235	13	9
GA	433	433	255	259	178	174
HI	10.3	10.0	10.3	10.0	0	0
IL	78	83	74	79	4	4
IN	498	521	485	508	13	13
IA	832	831				
ME	90	99				
MD	74	67	70	64	4	3
MI	149	150				
MN	275	258	265	249	10	9
MS	137	140	45	47	92	93
MO	153	158				
NE	244	261	244	261	0	0
NY	97	89				
NC	216	215	78	78	138	137
OH	680	645				
OK	82	81	47	47	35	34
OR	62	62	60	61	2	1
PA	552	578	535	562	17	16
SC	118	121	99	101	19	20
SD	50	57	50	57	0	0
TX	425	416				
VA	69	62	32	23	37	39
WA	118	107				
WI	102	95				
30 Sts	6,949	6,874	5,932	5,856	1,017	1,018
Oth Sts ²	468	489	380	400	87	89
US	7,417	7,363	6,312	6,256	1,104	1,107

¹ Data by type of flock not shown for some States to avoid disclosing individual operations.

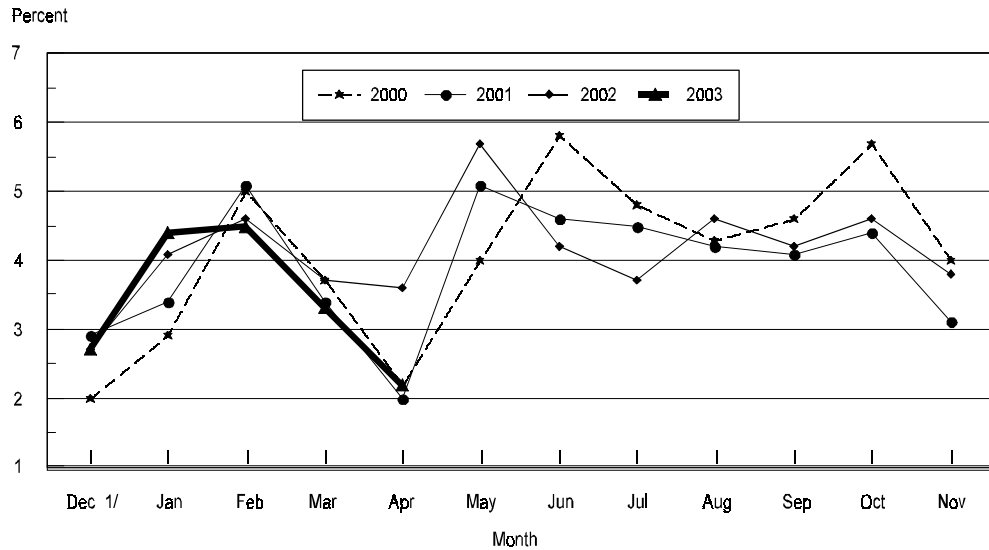
² Estimates for individual States are not available.

**Forced Molt: Percent of All Layers by Month,
United States, 2002-03¹**

Month	Percent Being Molted		Percent with Molt Completed	
	2002	2003	2002	2003
	<i>Percent</i>	<i>Percent</i>	<i>Percent</i>	<i>Percent</i>
Jan	4.1	4.4	22.7	23.7
Feb	4.6	4.5	22.0	23.9
Mar	3.7	3.3	22.2	23.6
Apr	3.6	2.2	22.2	24.4
May	5.7		21.5	
Jun	4.2		22.2	
Jul	3.7		22.8	
Aug	4.6		21.9	
Sep	4.2		23.4	
Oct	4.6		23.7	
Nov	3.8		23.5	
Dec	2.7		23.7	

¹ As of first of month.

**All Layers : United States
Percent Being Molted, 2000 - 2003
First of Month**



1/ Previous Year

**Forced Molt: Percent of All Layers by State
and United States, April 2002-03 ¹**

State	Percent Being Molted		Percent with Molt Completed	
	2002	2003	2002	2003
	<i>Percent</i>	<i>Percent</i>	<i>Percent</i>	<i>Percent</i>
AL	2.5	0.0	8.0	8.0
AR	1.0	1.0	6.5	9.5
CA	2.0	2.5	33.5	41.0
CO	2.5	0.0	15.0	23.0
CT	0.5	6.0	9.0	0.5
FL	6.0	3.0	29.5	28.5
GA	2.5	1.5	13.5	17.0
HI	3.5	8.5	39.5	50.0
IL	5.0	1.5	32.0	29.0
IN	3.0	1.0	31.5	34.0
IA	2.5	2.5	31.5	35.0
ME	1.0	0.0	0.0	0.0
MD	9.5	0.0	34.0	26.5
MI	2.0	1.5	31.5	30.0
MN	1.5	4.0	28.0	30.5
MS	0.0	0.0	10.0	12.0
MO	5.0	1.5	20.0	17.0
NE	10.5	8.0	24.0	23.5
NY	0.0	0.0	6.0	7.0
NC	3.5	1.0	3.0	10.0
OH	5.0	5.0	16.5	26.5
OK	0.0	0.5	7.0	7.5
OR	0.0	4.5	26.5	30.0
PA	5.0	2.0	19.0	19.0
SC	4.0	0.0	32.5	24.0
SD	3.5	3.0	28.0	22.0
TX	5.5	0.0	22.0	24.5
VA	0.0	7.5	14.0	15.0
WA	3.0	1.0	44.5	43.5
WI	5.5	0.0	30.0	33.0
30 Sts	3.5	2.2	21.9	24.5
Oth Sts ²	5.4	1.4	25.6	23.6
US	3.6	2.2	22.2	24.4

¹ As of first of month.

² Estimates for individual States are not available.

**Hatchery Production: Eggs in Incubators, Chicks Hatched,
and Placements by Type, United States, March-April 2002-03**

Item	2002	2003	2003 as % of 2002
	<i>1,000</i>	<i>1,000</i>	<i>Percent</i>
Egg-Type			
Eggs in Incubators on Apr 1	33,221	34,344	103
Chicks Hatched During Mar	36,977	36,726	99
Chicks Hatched Jan thru Mar	107,089	100,213	94
Pullets Hatched During Mar for Intended Placements in Hatchery Supply Flocks	237	315	133
7-18 Month Earlier ¹	3,239	2,886	89
Broiler-Type			
Eggs in Incubators on Apr 1	646,301	637,759	99
Chicks Hatched During Mar	791,093	774,836	98
Chicks Hatched Jan thru Mar	2,271,377	2,229,199	98
Pullets Hatched During Mar for Intended Placements in Hatchery Supply Flocks	6,775	6,329	93
7-15 Months Earlier ²	60,771	62,559	103

¹ 2003 includes pullet chicks hatched Sep 2001 through Aug 2002.

² 2003 includes pullet chicks hatched Dec 2001 through Aug 2002.

**Egg-Type Eggs in Incubators: By Region and United States,
April 1, 2002-03**

Geographic Division	2002	2003	2003 as % of 2002
	<i>1,000</i>	<i>1,000</i>	<i>Percent</i>
North Atlantic	4,332	5,049	117
E North Central	7,712	8,215	107
W North Central	5,700	7,712	135
South Atlantic	4,677	2,883	62
South Central	5,049	5,767	114
West	5,751	4,718	82
US	33,221	34,344	103

Regional Listing:

North Atlantic = CT, ME, MA, NH, NJ, NY, PA, RI, VT.

E North Central = IL, IN, MI, OH, WI.

W North Central = IA, KS, MN, MO, NE, ND, SD.

South Atlantic = DE, FL, GA, MD, NC, SC, VA, WV.

South Central = AL, AR, KY, LA, MS, OK, TN, TX.

West = AK, AZ, CA, CO, HI, ID, MT, NM, NV, OR, UT, WA, WY.

**Egg-Type Chicks Hatched: By State and United States,
March 2002-03**

State	March			Jan-Mar		
	2002	2003	2003 as % of 2002	2002	2003	2003 as % of 2002
	<i>1,000</i>	<i>1,000</i>	<i>Percent</i>	<i>1,000</i>	<i>1,000</i>	<i>Percent</i>
AR	681	730	107	2,297	2,350	102
FL	629	571	91	1,737	1,856	107
GA	2,271	2,450	108	6,659	7,179	108
IN	5,314	4,878	92	15,164	14,344	95
IA	4,893	5,915	121	14,969	16,418	110
MN	1,716	1,451	85	4,395	4,352	99
PA	4,867	4,012	82	13,501	12,074	89
Oth Sts ¹	16,606	16,719	101	48,367	41,640	86
US	36,977	36,726	99	107,089	100,213	94

¹ Not published separately to avoid disclosing data for individual operations.

Egg-Type Chicks Hatched: By Month, United States, 2001-03

Month	By Months				Cumulative			
	2001	2002	2003	2003 as % of 2002	2001	2002	2003	2003 as % of 2002
	<i>1,000</i>	<i>1,000</i>	<i>1,000</i>	<i>Percent</i>	<i>1,000</i>	<i>1,000</i>	<i>1,000</i>	<i>Percent</i>
Jan	36,728	35,647	33,499	94	36,728	35,647	33,499	94
Feb	37,836	34,465	29,988	87	74,564	70,112	63,487	91
Mar	41,015	36,977	36,726	99	115,579	107,089	100,213	94
Apr	42,789	38,088			158,368	145,177		
May	42,655	38,751			201,023	183,928		
Jun	40,822	35,136			241,845	219,064		
Jul	38,651	35,573			280,496	254,637		
Aug	34,987	35,681			315,483	290,318		
Sep	37,140	35,734			352,623	326,052		
Oct	35,825	32,149			388,448	358,201		
Nov	32,355	31,146			420,803	389,347		
Dec	31,870	31,973			452,673	421,320		

**Intended Placements: Egg-Type Pullet Chicks for Hatchery Supply
Flocks by Month and Total, United States, 2001-03¹**

Month	Pullet Chicks Hatched			2003 as % of 2002	Cumulative Potential Placements Relative to Current Supply Flocks 7-18 Months Earlier ²		
	2001	2002	2003		2001	2002	2003
	<i>1,000</i>	<i>1,000</i>	<i>1,000</i>	<i>Percent</i>	<i>1,000</i>	<i>1,000</i>	<i>1,000</i>
Jan	236	228	198	87	3,129	3,158	2,974
Feb	214	247	221	89	3,191	3,205	2,916
Mar	284	237	315	133	3,090	3,239	2,886
Apr	311	295			3,096	3,225	2,944
May	315	319			3,057	3,134	2,980
Jun	261	221			3,103	3,087	2,946
Jul	340	282			3,173	3,048	2,927
Aug	251	221			3,197	3,040	2,897
Sep	219	277			3,160	3,073	2,871
Oct	150	186			3,158	3,026	2,949
Nov	261	227			3,160	3,010	
Dec	206	187			3,132	3,014	
Total	3,048	2,927					

¹ Reported by leading breeders. Coverage may not be 100 percent. Includes expected pullet chicks from eggs sold during the preceding month at the rate of 125 pullet chicks per 30 dozen case of eggs.

² For March 2003, includes breeder pullet chicks hatched Sep 2001 through Aug 2002. The 7-18 months represent the first laying cycle. Molting and additional laying cycles will increase the cumulative potential placements.

**Broiler-Type Eggs in Incubators: By Region
and United States, April 1, 2002-03**

Geographic Division	2002	2003	2003 as % of 2002
	<i>1,000</i>	<i>1,000</i>	<i>Percent</i>
North Atlantic	12,248	11,644	95
E North Central	7,509	7,785	104
W North Central	21,391	21,983	103
South Atlantic	240,117	236,647	99
South Central	340,083	334,469	98
West	24,953	25,231	101
US	646,301	637,759	99

**Broiler-Type Chicks Hatched: By State
and United States, March 2002-03**

State	March			Jan-Mar		
	2002	2003	2003 as % of 2002	2002	2003	2003 as % of 2002
	<i>1,000</i>	<i>1,000</i>	<i>Percent</i>	<i>1,000</i>	<i>1,000</i>	<i>Percent</i>
AL	108,391	104,146	96	313,210	298,289	95
AR	112,252	111,793	100	323,571	324,736	100
DE	13,124	12,621	96	37,563	36,871	98
FL	8,465	5,899	70	24,804	16,879	68
GA	115,035	115,863	101	332,114	329,581	99
KY	24,150	24,339	101	68,996	70,252	102
MD	35,980	34,248	95	102,219	101,482	99
MS	70,481	70,801	100	203,310	204,648	101
NC	70,696	67,642	96	200,214	192,885	96
OK	23,406	24,355	104	67,469	69,500	103
PA	13,688	12,027	88	38,123	35,683	94
SC	17,204	17,287	100	48,788	49,901	102
TX	57,159	54,588	96	164,316	157,847	96
VA	24,650	24,632	100	70,693	70,094	99
CA, LA, MO, TN, & WV	75,783	74,359	98	213,299	209,938	98
19 Sts ¹	770,464	754,600	98	2,208,689	2,168,586	98
Oth Sts ²	20,629	20,236	98	62,688	60,613	97
US	791,093	774,836	98	2,271,377	2,229,199	98

¹ States in the weekly hatchery production estimating program.

² Not published separately to avoid disclosing data for individual operations.

Broiler-Type Chicks Hatched: By Month, United States, 2001-03

Month	By Months				Cumulative			
	2001	2002	2003	2003 as % of 2002	2001	2002	2003	2003 as % of 2002
	<i>1,000</i>	<i>1,000</i>	<i>1,000</i>	<i>Percent</i>	<i>1,000</i>	<i>1,000</i>	<i>1,000</i>	<i>Percent</i>
Jan	745,939	776,961	759,773	98	745,939	776,961	759,773	98
Feb	683,255	703,323	694,590	99	1,429,194	1,480,284	1,454,363	98
Mar	778,760	791,093	774,836	98	2,207,954	2,271,377	2,229,199	98
Apr	755,455	765,415			2,963,409	3,036,792		
May	785,704	799,262			3,749,113	3,836,054		
Jun	766,534	776,332			4,515,647	4,612,386		
Jul	769,448	781,707			5,285,095	5,394,093		
Aug	771,550	780,020			6,056,645	6,174,113		
Sep	738,379	740,396			6,795,024	6,914,509		
Oct	748,274	720,564			7,543,298	7,635,073		
Nov	703,365	690,052			8,246,663	8,325,125		
Dec	774,453	753,875			9,021,116	9,079,000		

**Intended Placements: Broiler-Type Pullet Chicks for Hatchery
Supply Flocks by Month and Total, 2001-03 ¹**

Month	Pullet Chicks Hatched			2003 as % of 2002	Cumulative Potential Placements Relative to Current Supply Flocks 7-15 Months Earlier ²		
	2001	2002	2003		2001	2002	2003
	<i>1,000</i>	<i>1,000</i>	<i>1,000</i>	<i>Percent</i>	<i>1,000</i>	<i>1,000</i>	<i>1,000</i>
US Place- ments							
Jan	6,685	6,264	6,269	100	63,304	60,750	62,473
Feb	6,748	7,275	6,659	92	62,493	60,382	62,371
Mar	6,752	6,775	6,329	93	62,797	60,771	62,559
Apr	6,398	6,814			62,267	60,989	62,658
May	7,117	7,597			62,100	61,008	62,659
Jun	6,822	7,206			62,204	61,521	62,322
Jul	6,326	6,602			61,323	61,346	62,022
Aug	7,494	7,449			61,244	61,212	61,477
Sep	6,647	6,676			60,557	61,370	60,539
Oct	6,704	6,265			60,480	61,323	59,662
Nov	7,261	6,938			60,568	61,811	
Dec	6,577	6,475			60,397	61,914	
Annual Total	81,531	82,336					
Total Place- ments ³							
Jan	7,615	7,415	7,388	100			
Feb	8,275	8,491	8,094	95			
Mar	8,325	7,997	7,391	92			
Apr	7,915	8,119					
May	8,647	8,982					
Jun	8,220	8,802					
Jul	7,687	8,083					
Aug	9,133	8,913					
Sep	8,047	8,002					
Oct	7,848	7,438					
Nov	9,017	8,202					
Dec	8,119	8,016					
Annual Total	98,848	98,460					

¹ Reported by leading breeders. Coverage may not be 100 percent. Includes expected pullet chicks from eggs sold during the preceding month at the rate of 125 pullet chicks per 30 dozen case of eggs.

² For Mar 2003, includes breeder pullet chicks hatched Dec 2001 through Aug 2002.

³ U.S. production of intended placements worldwide.

Procedures and Reliability

Data Sources: Primary data for the "**Chickens and Eggs**" report are from weekly and/or monthly questionnaires sent to producers. An attempt is made to collect information for layer and egg estimates from each known contractor and independent producer who has over 30,000 table egg layers. Coverage for operations with less than 30,000 table egg layers are estimated each month based on data reported in December. Approximately 900 contractors, independent egg producers, and started pullet operations are contacted each month. All known hatcheries, approximately 330, are contacted for information on a weekly and/or monthly basis.

Revisions: The previous month's estimates are subject to revision if late reports or corrected data indicates a different level. Additionally, revisions needed after the monthly report will be made at the end of the marketing year and published in the annual summaries of "**Chickens and Eggs Summary**" and "**Hatchery Production**".

Procedures and Reliability: Operations are mailed a questionnaire and given adequate time to respond by mail. Those that do not respond are phoned. Great care is exercised to ensure that all operations are accounted for during each survey period. However, there are usually missing reports that must be accounted for in the estimates.

Sound statistical methodology is employed to derive estimates from the reported data. All data are checked for unusual values. All operations' data are compared to their own past operating profiles and also to trends from other operations. Data for missing operations are estimated based on similar operations or historical data. Survey data are subject to non-sampling errors such as omissions and mistakes in reporting and in processing. While these errors cannot be measured directly, they are minimized by reviewing all data for consistency and reasonableness.

Egg-type chicks hatched are comprised of all chicks of egg-type domesticated breeds including males and chicks destined for hatchery supply flocks and research purposes. The relationship of chicks hatched to chicken inventory and poultry marketings is carefully monitored. The disposition of egg-type chicks hatched prior to placement into the laying flock can vary significantly, which can make comparisons to changes in layer inventory inconsistent over time.

Intended placement data reported by leading breeders include pullet chicks expected from eggs sold the preceding month. The breeders in this report account for a large percentage of replacement pullets for hatchery supply flocks. Production of replacement pullets by these breeders indicates the number of pullets available to hatchery supply flocks several months before the pullets will actually move into the flocks. "Hatchery Supply Flocks" include all generations of layers which could lay eggs to supply a hatchery. This includes the generations of parents, grandparents, great-grandparents, pedigree, etc. Also included are research flocks, vaccine flocks, and specific pathogen-free flocks. The broiler cumulative potential placements are a moving total of the intended placements 7-15 months earlier. The egg-type cumulative potential placements of 7-18 months represent the first laying cycle. Molting and additional laying cycles will increase the cumulative potential placements of egg-type hatching flocks.

The next "Chickens and Eggs" report will be released at 3 p.m. ET on May 22, 2003.

The United States Department of Agriculture (USDA) prohibits discrimination in all its programs on the basis of race, color, national origin, gender, religion, age, disability, political beliefs, sexual orientation, and marital or family status. (Not all prohibited bases apply to all programs.) Persons with disabilities who require alternative means for communication of program information (braille, large print, audiotape, etc.) should contact the USDA's TARGET Center at 202-720-2600 (voice and TDD).

To file a complaint of discrimination, write USDA, Director, Office of Civil Rights, Room 326-W, Whitten Building, 1400 Independence Avenue, SW, Washington, D.C., 20250-9410, or call 202-720-5964 (voice or TDD). USDA is an equal opportunity provider and employer.

ACCESS TO REPORTS!!

For your convenience, there are several ways to obtain NASS reports, data products, and services:

INTERNET ACCESS

All NASS reports are available free of charge on the worldwide Internet. For access, connect to the Internet and go to the NASS Home Page at: <http://www.usda.gov/nass/>. Select "Today's Reports" or Publications and then Reports Calendar or Publications and then Search, by Title or Subject.

E-MAIL SUBSCRIPTION

All NASS reports are available by subscription free of charge direct to your e-mail address. Starting with the NASS Home Page at <http://www.usda.gov/nass/>, click on **Publications**, then click on the **Subscribe by E-mail** button which takes you to the page describing e-mail delivery of reports. Finally, click on **Go to the Subscription Page** and follow the instructions.

AUTOFAX ACCESS

NASSFax service is available for some reports from your fax machine. Please call 202-720-2000, using the handset attached to your fax. Respond to the voice prompts. Document 0411 is a list of available reports.

PRINTED REPORTS OR DATA PRODUCTS

CALL OUR TOLL-FREE ORDER DESK: 800-999-6779 (U.S. and Canada)
Other areas, please call 703-605-6220 FAX: 703-605-6900
(Visa, MasterCard, check, or money order acceptable for payment.)

ASSISTANCE

For **assistance** with general agricultural statistics or further information about NASS or its products or services, contact the **Agricultural Statistics Hotline** at **800-727-9540**, 7:30 a.m. to 4:00 p.m. ET, or e-mail: nass@nass.usda.gov.
