

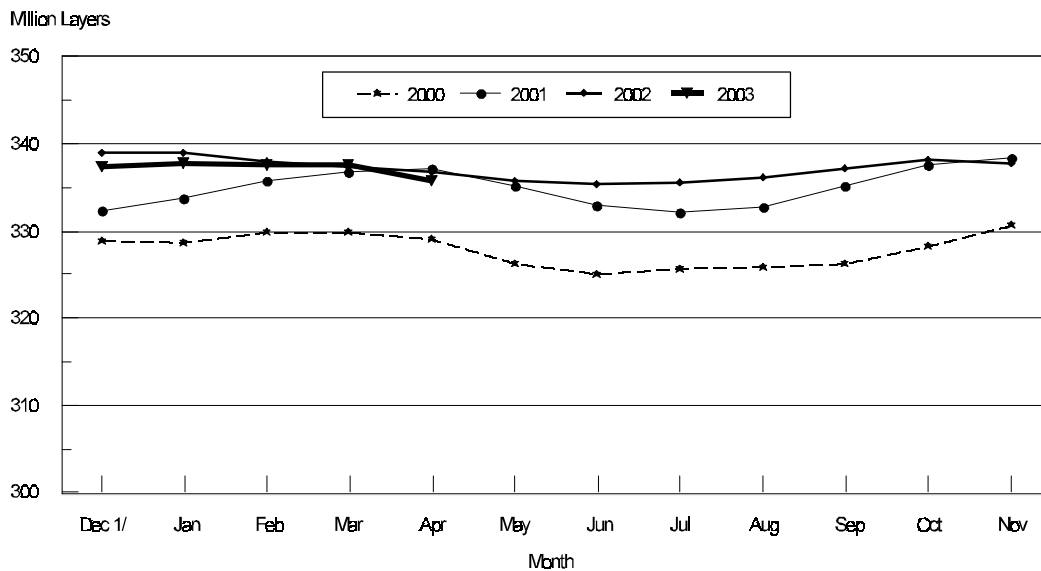
Released May 22, 2003, by the National Agricultural Statistics Service (NASS), Agricultural Statistics Board, U.S. Department of Agriculture. For information on "Chickens and Eggs" call Tom Kruchten at (202) 690-4870, for "Hatch" call Jody Roberts at (202) 690-8632, office hours 7:30 a.m. to 4:00 p.m. ET.

April Egg Production Up Slightly

U.S. egg production totaled 7.13 billion during April 2003, up slightly from last year. Production included 6.05 billion table eggs and 1.08 billion hatching eggs, of which 1.02 billion were broiler-type and 63.0 million were egg-type. The total number of layers during April 2003 averaged 336 million, down slightly from a year earlier. April egg production per 100 layers was 2,123 eggs, up 1 percent from April 2002.

April 2003 contained 22 weekdays and four Saturdays, equal to April 2002.

Average Number of All Layers United States, 2000 - 2003



1/ Previous Year

All layers in the U.S. on May 1, 2003, totaled 334 million, down 1 percent from a year ago. The 334 million layers consisted of 274 million layers producing table or commercial type eggs, 57.6 million layers producing broiler-type hatching eggs, and 2.77 million layers producing egg-type hatching eggs. Rate of lay per day on May 1, 2003, averaged 70.5 eggs per 100 layers, up 2 percent from a year ago.

Laying flocks in the 30 major egg producing States produced 6.66 billion eggs during April 2003, down slightly from a year ago. The average number of layers during April, at 313 million, was down 1 percent from a year ago.

Individual State estimates are available for the 30 major egg producing States. These States are listed on page 8 of this release and account for approximately 94 percent of the total U.S. egg production. Production for the other States are grouped into an "Other States" category and combined with the 30 States published individually to obtain a U.S. estimate. Individual State estimates for "Other States" are available annually in the "**Chickens and Eggs Summary**" report.

Egg-Type Chicks Hatched Down 1 Percent

Egg-type chicks hatched during April totaled 37.5 million, down 1 percent from April 2002. Eggs in incubators totaled 34.8 million on May 1, 2003, down 3 percent from a year ago.

Domestic placements of egg-type pullet chicks for future hatchery supply flocks by leading breeders totaled 276,000 during April 2003, down 6 percent from April 2002.

Broiler Hatch Down 1 Percent

The April 2003 hatch of broiler-type chicks, at 761 million, was down 1 percent from April of the previous year. There were 646 million eggs in incubators on May 1, 2003, down 1 percent from a year earlier.

Leading breeders placed 6.7 million broiler-type pullet chicks for future domestic hatchery supply flocks during April 2003, down 1 percent from April 2002.

**All Layers: Average Number on Hand During the Month,
United States, 2000-03**

Month	2000	2001	2002	2003
	<i>1,000 Layers</i>	<i>1,000 Layers</i>	<i>1,000 Layers</i>	<i>1,000 Layers</i>
Dec ¹	328,878	332,283	339,105	337,473
Jan	328,657	333,748	338,966	337,900
Feb	329,941	335,763	337,991	337,881
Mar	330,961	336,822	337,447	337,513
Apr	329,185	337,141	336,776	335,807
May	326,288	335,163	335,865	
Jun	325,057	332,928	335,412	
Jul	325,663	332,244	335,498	
Aug	325,853	332,808	336,159	
Sep	326,337	335,276	337,264	
Oct	328,278	337,593	338,159	
Nov	330,830	338,366	337,808	

¹ December preceding year.

**Eggs: Production During the Month by Type,
United States, 2002-03**

Month	Total Eggs		Table Eggs		Hatching Eggs	
	2002	2003	2002	2003	2002	2003
	<i>Million Eggs</i>	<i>Million Eggs</i>	<i>Million Eggs</i>	<i>Million Eggs</i>	<i>Million Eggs</i>	<i>Million Eggs</i>
Dec ¹	7,420	7,381	6,343	6,325	1,076	1,055
Jan	7,264	7,329	6,170	6,246	1,093	1,082
Feb	6,581	6,618	5,592	5,629	988	988
Mar	7,417	7,362	6,312	6,255	1,104	1,107
Apr	7,105	7,129	6,016	6,046	1,089	1,083
May	7,297		6,161		1,135	
Jun	7,126		6,037		1,089	
Jul	7,347		6,243		1,104	
Aug	7,356		6,263		1,093	
Sep	7,147		6,100		1,046	
Oct	7,412		6,345		1,067	
Nov	7,226		6,204		1,020	
During Year	86,698	35,819	73,786	30,501	12,904	5,315

¹ December preceding year.

**Layers and Eggs: Layers on Hand and Eggs Produced by Type,
and Forced Molt, United States, March-April 2002-03**

Item	Unit	2002	2003	2003 as % of 2002
Layers During Mar	1,000			
All Layers		337,447	337,513	100
Table Egg Type		277,349	277,572	100
Hatching Egg Type		60,098	59,941	100
Broiler-Type Hatching		57,471	57,309	100
Egg-Type Hatching		2,627	2,632	100
Eggs per 100 Layers During Mar	Number			
All Layers		2,198	2,181	99
Table Egg Type		2,276	2,253	99
Hatching Egg Type		1,837	1,847	101
Broiler-Type Hatching		1,810	1,820	101
Egg-Type Hatching		2,436	2,432	100
Eggs Produced During Mar	Million			
All Layers		7,417	7,362	99
Table Egg Type		6,312	6,255	99
Hatching Egg Type		1,104	1,107	100
Broiler-Type Hatching		1,040	1,043	100
Egg-Type Hatching		64	64	100
Layers on Apr 1	1,000			
All Layers		337,376	337,234	100
Table Egg Type		276,756	277,332	100
Hatching Egg Type		60,620	59,902	99
Broiler-Type Hatching		58,015	57,275	99
Egg-Type Hatching		2,605	2,627	101
Eggs per 100 Layers on Apr 1	Number			
All Layers		71.1	70.8	100
Table Egg Type		73.6	73.2	99
Hatching Egg Type		59.4	59.7	101
Broiler-Type Hatching		58.6	58.8	100
Egg-Type Hatching		77.9	78.8	101
Forced Molt Layers on Apr 1	Percent			
Percent Being Molted		3.6	2.2	61
Percent with Molt Completed		22.2	24.5	110
Layers Sold for Slaughter During Mar	1,000	16,840	14,623	87
Layers Rendered, Died, Destroyed, Composted or Disappeared For Any Reason During Mar	1,000	4,669	5,973	128
Pullets Less Than 20 Weeks of Age, Apr 1	1,000	93,651	95,182	102
Pullets Added During Mar ¹	1,000	23,472	23,800	101

¹ Pullet chicks one day old added to pullet flocks.

**Layers and Eggs: Layers on Hand and Eggs Produced by Type,
and Forced Molt, United States, April-May 2002-03**

Item	Unit	2002 ¹	2003	2003 as % of 2002
Layers During Apr	1,000			
All Layers		336,776	335,807	100
Table Egg Type		275,909	275,645	100
Hatching Egg Type		60,867	60,162	99
Broiler-Type Hatching		58,205	57,460	99
Egg-Type Hatching		2,662	2,702	102
Eggs per 100 Layers During Apr	Number			
All Layers		2,110	2,123	101
Table Egg Type		2,180	2,193	101
Hatching Egg Type		1,789	1,800	101
Broiler-Type Hatching		1,764	1,775	101
Egg-Type Hatching		2,329	2,332	100
Eggs Produced During Apr	Million			
All Layers		7,105	7,129	100
Table Egg Type		6,016	6,046	100
Hatching Egg Type		1,089	1,083	99
Broiler-Type Hatching		1,027	1,020	99
Egg-Type Hatching		62	63	102
Layers on May 1	1,000			
All Layers		336,131	334,338	99
Table Egg Type		275,036	273,938	100
Hatching Egg Type		61,095	60,400	99
Broiler-Type Hatching		58,384	57,630	99
Egg-Type Hatching		2,711	2,770	102
Eggs per 100 Layers on May 1	Number			
All Layers		69.4	70.5	102
Table Egg Type		71.6	72.9	102
Hatching Egg Type		59.8	59.9	100
Broiler-Type Hatching		59.0	59.1	100
Egg-Type Hatching		76.3	77.5	102
Forced Molt Layers, May 1	Percent			
Percent Being Molted		5.7	4.3	75
Percent with Molt Completed		21.5	23.5	109
Layers Sold for Slaughter During Apr	1,000	16,739	15,409	92
Layers Rendered, Died, Destroyed, Composted or Disappeared For Any Reason During Apr	1,000	5,130	6,038	118
Pullets Less Than 20 Weeks of Age, May 1	1,000	95,413	97,534	102
Pullets Added During Apr ²	1,000	22,892	23,649	103

¹ Revised.

² Pullet chicks one day old added to pullet flocks.

Layers and Eggs: Layers on Hand and Eggs Produced by Type, and Forced Molt, 30 Selected States, March-April, 2002-03 ¹

Item	Unit	2002	2003	2003 as % of 2002
Layers During Mar	1,000			
All Layers		316,421	314,793	99
Table Egg Type		261,038	259,746	100
Hatching Egg Type		55,383	55,047	99
Broiler-Type Hatching		52,844	52,503	99
Egg-Type Hatching		2,539	2,544	100
Eggs per 100 Layers During Mar	Number			
All Layers		2,196	2,183	99
Table Egg Type		2,272	2,254	99
Hatching Egg Type		1,836	1,849	101
Broiler-Type Hatching		1,807	1,821	101
Egg-Type Hatching		2,442	2,437	100
Eggs Produced During Mar	Million			
All Layers		6,949	6,872	99
Table Egg Type		5,932	5,854	99
Hatching Egg Type		1,017	1,018	100
Broiler-Type Hatching		955	956	100
Egg-Type Hatching		62	62	100
Layers on Apr 1	1,000			
All Layers		316,274	314,342	99
Table Egg Type		260,387	259,386	100
Hatching Egg Type		55,887	54,956	98
Broiler-Type Hatching		53,370	52,416	98
Egg-Type Hatching		2,517	2,540	101
Eggs per 100 Layers on Apr 1	Number			
All Layers		71.1	71.0	100
Table Egg Type		73.7	73.3	99
Hatching Egg Type		59.3	59.9	101
Broiler-Type Hatching		58.4	58.9	101
Egg-Type Hatching		78.1	78.9	101
Forced Molt Layers on Apr 1	Percent			
Percent Being Molted		3.5	2.2	63
Percent with Molt Completed		21.9	24.5	112
Layers Sold for Slaughter During Mar	1,000	16,157	13,491	83
Layers Rendered, Died, Destroyed, Composted or Disappeared For Any Reason During Mar	1,000	4,452	5,704	128
Pullets Less Than 20 Weeks of Age, Apr 1	1,000	87,944	88,658	101
Pullets Added During Mar ²	1,000	22,597	21,505	95

¹ The 30 States are listed in the table on page 8.

² Pullet chicks one day old added to pullet flocks.

**Layers and Eggs: Layers on Hand and Eggs Produced by Type, and Forced
Molt, 30 Selected States, April-May, 2002-03¹**

Item	Unit	2002 ²	2003	2003 as % of 2002
Layers During Apr	1,000			
All Layers		315,643	313,175	99
Table Egg Type		259,660	257,937	99
Hatching Egg Type		55,983	55,238	99
Broiler-Type Hatching		53,410	52,623	99
Egg-Type Hatching		2,573	2,615	102
Eggs per 100 Layers During Apr	1,000			
All Layers		2,114	2,126	101
Table Egg Type		2,184	2,195	101
Hatching Egg Type		1,790	1,801	101
Broiler-Type Hatching		1,764	1,775	101
Egg-Type Hatching		2,332	2,333	100
Eggs Produced During Apr	Million			
All Layers		6,672	6,657	100
Table Egg Type		5,670	5,662	100
Hatching Egg Type		1,002	995	99
Broiler-Type Hatching		942	934	99
Egg-Type Hatching		60	61	102
Layers on May 1	1,000			
All Layers		314,979	311,977	99
Table Egg Type		258,915	256,475	99
Hatching Egg Type		56,064	55,502	99
Broiler-Type Hatching		53,441	52,819	99
Egg-Type Hatching		2,623	2,683	102
Eggs per 100 Layers on May 1	Number			
All Layers		69.7	70.6	101
Table Egg Type		71.8	72.9	102
Hatching Egg Type		59.9	59.9	100
Broiler-Type Hatching		59.1	59.0	100
Egg-Type Hatching		76.4	77.5	101
Forced Molt Layers, May 1	Percent			
Percent Being Molted		5.5	4.1	75
Percent with Molt Completed		21.3	23.5	110
Layers Sold for Slaughter During Apr	1,000	15,438	14,230	92
Layers Rendered, Died, Destroyed, Composted or Disappeared For Any Reason During Apr	1,000	4,952	5,740	116
Pullets Less Than 20 Weeks of Age, May 1	1,000	89,471	90,930	102
Pullets Added During Apr ³	1,000	21,482	22,267	104

¹ The 30 States are listed in the table on page 8.

² Revised.

³ Pullet chicks one day old added to pullet flocks.

**Layers and Eggs: Layers on Hand and Eggs Produced by State
and United States, During March 2002-03**

State	Table Egg Layers in Flocks 30,000 and Above		All Layers ¹		Eggs per 100 for All Layers ¹	
	2002	2003	2002	2003	2002	2003
	<i>1,000</i>	<i>1,000</i>	<i>1,000</i>	<i>1,000</i>	<i>Number</i>	<i>Number</i>
AL	2,578	2,360	10,410	9,856	1,912	1,928
AR	4,977	4,722	15,235	15,731	1,897	1,894
CA	23,491	19,471	24,082	20,045	2,201	2,220
CO	3,070	3,294	3,583	3,838	2,261	2,319
CT	3,045	2,929	3,100	2,986	2,445	2,210
FL	9,797	10,356	10,507	10,903	2,189	2,238
GA	10,864	11,287	20,420	20,734	2,120	2,088
HI	487	477	543	519	1,897	1,927
IL	3,288	3,440	3,523	3,669	2,214	2,262
IN	21,575	22,361	22,276	23,042	2,236	2,261
IA	35,723	37,298	36,536	38,062	2,277	2,183
ME	3,900	4,197	3,954	4,248	2,276	2,331
MD	3,002	2,717	3,233	2,908	2,289	2,338
MI	6,228	6,373	6,488	6,624	2,300	2,264
MN	11,240	10,825	11,970	11,435	2,297	2,256
MS	1,850	1,872	6,822	6,844	2,008	2,046
MO	5,513	5,513	6,904	6,950	2,216	2,273
NE	11,436	11,604	11,536	11,704	2,115	2,230
NY	3,651	3,476	3,876	3,723	2,503	2,391
NC	3,214	3,300	11,330	11,152	1,906	1,928
OH	29,712	29,152	30,226	29,650	2,250	2,175
OK	2,021	2,018	4,197	4,129	1,967	1,962
OR	2,510	2,619	2,702	2,785	2,295	2,226
PA	21,980	22,890	23,379	24,229	2,361	2,386
SC	4,383	4,196	5,411	5,334	2,181	2,268
SD	2,108	2,351	2,308	2,551	2,166	2,234
TX	14,498	14,333	18,971	18,784	2,240	2,215
VA	1,400	1,175	3,450	3,243	2,000	1,912
WA	4,997	4,873	5,078	4,954	2,324	2,160
WI	3,779	3,653	4,371	4,161	2,334	2,283
30 Sts	256,317	255,132	316,421	314,793	2,196	2,183
Oth Sts ²	15,139	16,696	21,026	22,720	2,226	2,157
US	271,456	271,828	337,447	337,513	2,198	2,181

¹ Includes all layers and eggs produced in both table egg and hatching egg flocks regardless of size.

² Estimates for individual States are not available.

**Layers and Eggs: Layers on Hand and Eggs Produced by State
and United States, During April 2002-03**

State	Table Egg Layers in Flocks 30,000 and Above		All Layers ¹		Eggs per 100 for All Layers ¹	
	2002	2003	2002	2003	2002	2003
	<i>1,000</i>	<i>1,000</i>	<i>1,000</i>	<i>1,000</i>	<i>Number</i>	<i>Number</i>
AL	2,461	2,216	10,198	9,739	1,863	1,869
AR	4,719	4,671	15,255	15,790	1,862	1,824
CA	23,047	19,043	23,723	19,600	2,104	2,107
CO	3,170	3,327	3,680	3,850	2,228	2,338
CT	3,045	2,864	3,103	2,921	2,285	2,225
FL	9,869	10,040	10,551	10,577	2,095	2,165
GA	10,787	11,013	20,438	20,516	2,031	2,042
HI	489	473	545	514	1,853	1,946
IL	3,341	3,173	3,577	3,401	2,097	2,264
IN	21,456	22,269	22,155	22,987	2,180	2,188
IA	36,097	37,424	36,937	38,204	2,220	2,167
ME	3,954	4,182	4,009	4,232	2,188	2,292
MD	2,911	2,529	3,141	2,715	2,229	2,357
MI	6,591	6,233	6,846	6,484	2,162	2,190
MN	10,895	10,698	11,620	11,306	2,186	2,229
MS	1,765	1,840	6,790	6,806	1,915	1,939
MO	5,586	5,425	6,988	6,885	2,132	2,222
NE	11,338	11,670	11,438	11,770	2,081	2,141
NY	3,637	3,483	3,872	3,733	2,299	2,357
NC	3,057	3,265	11,320	10,948	1,855	1,900
OH	29,839	29,183	30,350	29,687	2,129	2,149
OK	1,993	2,009	4,213	4,149	1,863	1,880
OR	2,544	2,459	2,729	2,628	2,272	2,169
PA	21,897	22,984	23,336	24,352	2,288	2,275
SC	4,282	4,275	5,333	5,421	2,119	2,121
SD	2,107	2,582	2,307	2,782	2,081	2,193
TX	14,026	14,328	18,476	18,799	2,127	2,133
VA	1,312	1,173	3,311	3,278	1,963	1,922
WA	5,078	4,871	5,159	4,952	2,233	2,100
WI	3,646	3,641	4,243	4,149	2,145	2,266
30 Sts	254,939	253,343	315,643	313,175	2,114	2,126
Oth Sts ²	15,077	16,575	21,133	22,632	2,049	2,086
US	270,016	269,918	336,776	335,807	2,110	2,123

¹ Includes all layers and eggs produced in both table egg and hatching egg flocks regardless of size.

² Estimates for individual States are not available.

**Egg Production: By Type, State, and United States,
March 2002-03**

State	Total Production		Table Eggs ¹		Hatching Eggs ¹	
	2002	2003	2002	2003	2002	2003
	<i>Million Eggs</i>	<i>Million Eggs</i>	<i>Million Eggs</i>	<i>Million Eggs</i>	<i>Million Eggs</i>	<i>Million Eggs</i>
AL	199	190	57	54	142	136
AR	289	298	109	107	180	191
CA	530	445				
CO	81	89				
CT	76	66				
FL	230	244	217	235	13	9
GA	433	433	255	259	178	174
HI	10.3	10.0	10.3	10.0	0	0
IL	78	83	74	79	4	4
IN	498	521	485	508	13	13
IA	832	831				
ME	90	99				
MD	74	68	70	65	4	3
MI	149	150				
MN	275	258	265	249	10	9
MS	137	140	45	47	92	93
MO	153	158				
NE	244	261	244	261	0	0
NY	97	89				
NC	216	215	78	78	138	137
OH	680	645				
OK	82	81	47	47	35	34
OR	62	62	60	61	2	1
PA	552	578	535	562	17	16
SC	118	121	99	101	19	20
SD	50	57	50	57	0	0
TX	425	416				
VA	69	62	32	23	37	39
WA	118	107				
WI	102	95				
30 Sts	6,949	6,872	5,932	5,854	1,017	1,018
Oth Sts ²	468	490	380	401	87	89
US	7,417	7,362	6,312	6,255	1,104	1,107

¹ Data by type of flock not shown for some States to avoid disclosing individual operations.

² Estimates for individual States are not available.

**Egg Production: By Type, State, and United States,
April 2002-03**

State	Total Production		Table Eggs ¹		Hatching Eggs ¹	
	2002	2003	2002	2003	2002	2003
	<i>Million Eggs</i>	<i>Million Eggs</i>	<i>Million Eggs</i>	<i>Million Eggs</i>	<i>Million Eggs</i>	<i>Million Eggs</i>
AL	190	182	52	49	138	133
AR	284	288	102	100	182	188
CA	499	413				
CO	82	90				
CT	71	65				
FL	221	229	209	220	12	9
GA	415	419	240	247	175	172
HI	10.1	10.0	10.1	10.0	0	0
IL	75	77	72	74	3	3
IN	483	503	471	490	12	13
IA	820	828				
ME	88	97				
MD	70	64	66	61	4	3
MI	148	142				
MN	254	252	245	244	9	8
MS	130	132	40	42	90	90
MO	149	153				
NE	238	252	238	252	0	0
NY	89	88				
NC	210	208	73	76	137	132
OH	646	638				
OK	79	78	45	45	34	33
OR	62	57	60	56	2	1
PA	534	554	517	538	17	16
SC	113	115	94	96	19	19
SD	48	61	48	61	0	0
TX	393	401				
VA	65	63	30	24	35	39
WA	115	104				
WI	91	94				
30 Sts	6,672	6,657	5,670	5,662	1,002	995
Oth Sts ²	433	472	346	384	87	88
US	7,105	7,129	6,016	6,046	1,089	1,083

¹ Data by type of flock not shown for some States to avoid disclosing individual operations.

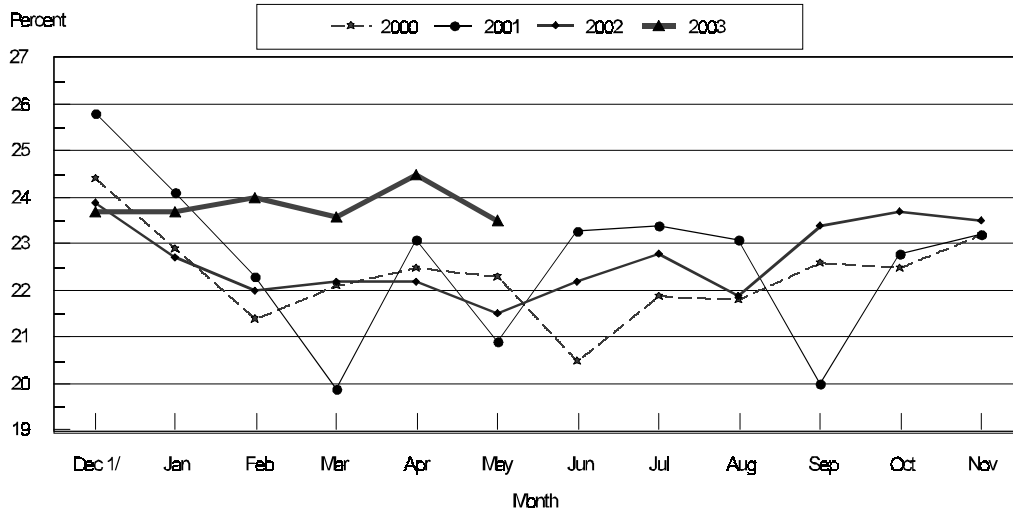
² Estimates for individual States are not available.

**Forced Molt: Percent of All Layers by Month,
United States, 2002-03¹**

Month	Percent Being Molted		Percent with Molt Completed	
	2002	2003	2002	2003
	<i>Percent</i>	<i>Percent</i>	<i>Percent</i>	<i>Percent</i>
Jan	4.1	4.4	22.7	23.7
Feb	4.6	4.5	22.0	23.9
Mar	3.7	3.3	22.2	23.6
Apr	3.6	2.2	22.2	24.5
May	5.7	4.3	21.5	23.5
Jun	4.2		22.2	
Jul	3.7		22.8	
Aug	4.6		21.9	
Sep	4.2		23.4	
Oct	4.6		23.7	
Nov	3.8		23.5	
Dec	2.7		23.7	

¹ As of first of month.

**All Layers: United States
Percent Molt Completed, 2000 - 2003
First of Month**



1/ Previous year

**Forced Molt: Percent of All Layers by State
and United States, May 2002-03 ¹**

State	Percent Being Molted		Percent with Molt Completed	
	2002	2003	2002	2003
	<i>Percent</i>	<i>Percent</i>	<i>Percent</i>	<i>Percent</i>
AL	3.5	1.5	7.5	6.5
AR	2.0	2.5	6.5	9.5
CA	7.0	7.5	28.0	36.5
CO	10.0	4.5	26.5	21.0
CT	1.5	6.0	5.5	8.0
FL	6.5	6.0	28.5	31.0
GA	6.0	4.5	11.5	14.5
HI	9.0	7.5	39.5	54.5
IL	9.0	3.0	27.0	27.0
IN	7.5	4.0	31.5	30.0
IA	5.5	4.0	29.5	34.5
ME	0.0	0.0	1.0	0.0
MD	3.5	0.0	46.0	32.5
MI	6.0	2.0	25.5	29.5
MN	6.5	2.5	29.0	34.0
MS	3.0	2.0	9.0	10.0
MO	4.0	2.5	20.5	15.0
NE	8.0	8.0	26.5	20.5
NY	0.5	0.0	7.0	7.0
NC	2.0	2.0	5.0	12.0
OH	5.0	4.0	17.0	29.0
OK	0.0	2.5	5.0	7.5
OR	2.5	8.0	30.5	26.5
PA	4.5	4.0	20.5	18.5
SC	5.5	5.5	33.0	19.5
SD	4.5	4.0	30.0	21.0
TX	7.0	4.5	19.0	22.5
VA	3.5	3.0	12.0	14.0
WA	15.0	9.0	39.0	40.0
WI	10.0	6.5	33.0	29.0
30 Sts	5.5	4.1	21.3	23.5
Oth Sts ²	9.3	7.4	24.5	22.4
US	5.7	4.3	21.5	23.5

¹ As of first of month.

² Estimates for individual States are not available.

**Hatchery Production: Eggs in Incubators, Chicks Hatched,
and Placements by Type, United States, April-May 2002-03**

Item	2002	2003	2003 as % of 2002
	<i>1,000</i>	<i>1,000</i>	<i>Percent</i>
Egg-Type			
Eggs in Incubators on May 1	35,987	34,810	97
Chicks Hatched During Apr	38,088	37,531	99
Chicks Hatched Jan thru Apr	145,177	137,744	95
Pullets Hatched During Apr for Intended Placements in Hatchery Supply Flocks	295	276	94
7-18 Month Earlier ¹	3,225	2,944	91
Broiler-Type			
Eggs in Incubators on May 1	652,438	646,010	99
Chicks Hatched During Apr	765,415	761,145	99
Chicks Hatched Jan thru Apr	3,036,792	2,990,344	98
Pullets Hatched During Apr for Intended Placements in Hatchery Supply Flocks	6,814	6,720	99
7-15 Months Earlier ²	60,989	62,658	103

¹ 2003 includes pullet chicks hatched Oct 2001 through Sep 2002.

² 2003 includes pullet chicks hatched Jan 2002 through Sep 2002.

**Egg-Type Eggs in Incubators: By Region and United States,
May 1, 2002-03**

Geographic Division	2002	2003	2003 as % of 2002
	<i>1,000</i>	<i>1,000</i>	<i>Percent</i>
North Atlantic	5,007	4,319	86
E North Central	7,278	8,426	116
W North Central	7,675	8,774	114
South Atlantic	4,949	2,809	57
South Central	5,366	5,568	104
West	5,712	4,914	86
US	35,987	34,810	97

Regional Listing:

North Atlantic = CT, ME, MA, NH, NJ, NY, PA, RI, VT.

E North Central = IL, IN, MI, OH, WI.

W North Central = IA, KS, MN, MO, NE, ND, SD.

South Atlantic = DE, FL, GA, MD, NC, SC, VA, WV.

South Central = AL, AR, KY, LA, MS, OK, TN, TX.

West = AK, AZ, CA, CO, HI, ID, MT, NM, NV, OR, UT, WA, WY.

**Egg-Type Chicks Hatched: By State and United States,
April 2002-03**

State	April			Jan-Apr		
	2002	2003	2003 as % of 2002	2002	2003	2003 as % of 2002
	<i>1,000</i>	<i>1,000</i>	<i>Percent</i>	<i>1,000</i>	<i>1,000</i>	<i>Percent</i>
AR	738	695	94	3,035	3,045	100
FL	642	563	88	2,379	2,419	102
GA	2,149	2,429	113	8,808	9,608	109
IN	5,339	4,893	92	20,503	19,237	94
IA	5,784	6,398	111	20,753	22,816	110
MN	1,317	1,451	110	5,712	5,803	102
PA	4,402	4,740	108	17,903	16,814	94
Oth Sts ¹	17,717	16,362	92	66,084	58,002	88
US	38,088	37,531	99	145,177	137,744	95

¹ Not published separately to avoid disclosing data for individual operations.

Egg-Type Chicks Hatched: By Month, United States, 2001-03

Month	By Months				Cumulative			
	2001	2002	2003	2003 as % of 2002	2001	2002	2003	2003 as % of 2002
	<i>1,000</i>	<i>1,000</i>	<i>1,000</i>	<i>Percent</i>	<i>1,000</i>	<i>1,000</i>	<i>1,000</i>	<i>Percent</i>
Jan	36,728	35,647	33,499	94	36,728	35,647	33,499	94
Feb	37,836	34,465	29,988	87	74,564	70,112	63,487	91
Mar	41,015	36,977	36,726	99	115,579	107,089	100,213	94
Apr	42,789	38,088	37,531	99	158,368	145,177	137,744	95
May	42,655	38,751			201,023	183,928		
Jun	40,822	35,136			241,845	219,064		
Jul	38,651	35,573			280,496	254,637		
Aug	34,987	35,681			315,483	290,318		
Sep	37,140	35,734			352,623	326,052		
Oct	35,825	32,149			388,448	358,201		
Nov	32,355	31,146			420,803	389,347		
Dec	31,870	31,973			452,673	421,320		

**Intended Placements: Egg-Type Pullet Chicks for Hatchery Supply
Flocks by Month and Total, United States, 2001-03 ¹**

Month	Pullet Chicks Hatched			2003 as % of 2002	Cumulative Potential Placements Relative to Current Supply Flocks 7-18 Months Earlier ²		
	2001	2002	2003		2001	2002	2003
	<i>1,000</i>	<i>1,000</i>	<i>1,000</i>	<i>Percent</i>	<i>1,000</i>	<i>1,000</i>	<i>1,000</i>
Jan	236	228	198	87	3,129	3,158	2,974
Feb	214	247	221	89	3,191	3,205	2,916
Mar	284	237	315	133	3,090	3,239	2,886
Apr	311	295	276	94	3,096	3,225	2,944
May	315	319			3,057	3,134	2,980
Jun	261	221			3,103	3,087	2,946
Jul	340	282			3,173	3,048	2,927
Aug	251	221			3,197	3,040	2,897
Sep	219	277			3,160	3,073	2,871
Oct	150	186			3,158	3,026	2,949
Nov	261	227			3,160	3,010	2,930
Dec	206	187			3,132	3,014	
Total	3,048	2,927					

¹ Reported by leading breeders. Coverage may not be 100 percent. Includes expected pullet chicks from eggs sold during the preceding month at the rate of 125 pullet chicks per 30 dozen case of eggs.

² For April 2003, includes breeder pullet chicks hatched Oct 2001 through Sep 2002. The 7-18 months represent the first laying cycle. Molting and additional laying cycles will increase the cumulative potential placements.

**Broiler-Type Eggs in Incubators: By Region
and United States, May 1, 2002-03**

Geographic Division	2002	2003	2003 as % of 2002
	<i>1,000</i>	<i>1,000</i>	<i>Percent</i>
North Atlantic	12,407	11,913	96
E North Central	7,939	8,220	104
W North Central	22,632	23,654	105
South Atlantic	242,553	238,944	99
South Central	341,000	338,337	99
West	25,907	24,942	96
US	652,438	646,010	99

**Broiler-Type Chicks Hatched: By State
and United States, April 2002-03**

State	April			Jan-Apr		
	2002	2003	2003 as % of 2002	2002	2003	2003 as % of 2002
	<i>1,000</i>	<i>1,000</i>	<i>Percent</i>	<i>1,000</i>	<i>1,000</i>	<i>Percent</i>
AL	104,539	102,088	98	417,749	400,377	96
AR	107,781	106,918	99	431,352	431,654	100
DE	12,435	13,228	106	49,998	50,099	100
FL	8,267	5,668	69	33,071	22,547	68
GA	111,694	112,495	101	443,808	442,076	100
KY	23,171	23,573	102	92,167	93,825	102
LA	13,458	13,502	100	53,189	53,393	100
MD	33,804	34,559	102	136,023	136,041	100
MS	68,376	69,272	101	271,686	273,920	101
NC	68,429	67,214	98	268,643	260,099	97
OK	22,555	24,001	106	90,024	93,501	104
PA	13,081	12,810	98	51,204	48,493	95
SC	16,385	17,018	104	65,173	66,919	103
TX	55,612	52,510	94	219,928	210,357	96
VA	23,607	23,880	101	94,300	93,974	100
CA, MO, TN, & WV	59,576	59,932	101	233,144	229,979	99
19 Sts ¹	742,770	738,668	99	2,951,459	2,907,254	99
Oth Sts ²	22,645	22,477	99	85,333	83,090	97
US	765,415	761,145	99	3,036,792	2,990,344	98

¹ States in the weekly hatchery production estimating program.

² Not published separately to avoid disclosing data for individual operations.

Broiler-Type Chicks Hatched: By Month, United States, 2001-03

Month	By Months				Cumulative			
	2001	2002	2003	2003 as % of 2002	2001	2002	2003	2003 as % of 2002
	<i>1,000</i>	<i>1,000</i>	<i>1,000</i>	<i>Percent</i>	<i>1,000</i>	<i>1,000</i>	<i>1,000</i>	<i>Percent</i>
Jan	745,939	776,961	759,773	98	745,939	776,961	759,773	98
Feb	683,255	703,323	694,590	99	1,429,194	1,480,284	1,454,363	98
Mar	778,760	791,093	774,836	98	2,207,954	2,271,377	2,229,199	98
Apr	755,455	765,415	761,145	99	2,963,409	3,036,792	2,990,344	98
May	785,704	799,262			3,749,113	3,836,054		
Jun	766,534	776,332			4,515,647	4,612,386		
Jul	769,448	781,707			5,285,095	5,394,093		
Aug	771,550	780,020			6,056,645	6,174,113		
Sep	738,379	740,396			6,795,024	6,914,509		
Oct	748,274	720,564			7,543,298	7,635,073		
Nov	703,365	690,052			8,246,663	8,325,125		
Dec	774,453	753,875			9,021,116	9,079,000		

**Intended Placements: Broiler-Type Pullet Chicks for Hatchery
Supply Flocks by Month and Total, 2001-03 ¹**

Month	Pullet Chicks Hatched			2003 as % of 2002	Cumulative Potential Placements Relative to Current Supply Flocks 7-15 Months Earlier ²		
	2001	2002	2003		2001	2002	2003
	<i>1,000</i>	<i>1,000</i>	<i>1,000</i>	<i>Percent</i>	<i>1,000</i>	<i>1,000</i>	<i>1,000</i>
US Place- ments							
Jan	6,685	6,264	6,269	100	63,304	60,750	62,473
Feb	6,748	7,275	6,659	92	62,493	60,382	62,371
Mar	6,752	6,775	6,329	93	62,797	60,771	62,559
Apr	6,398	6,814	6,720	99	62,267	60,989	62,658
May	7,117	7,597			62,100	61,008	62,659
Jun	6,822	7,206			62,204	61,521	62,322
Jul	6,326	6,602			61,323	61,346	62,022
Aug	7,494	7,449			61,244	61,212	61,477
Sep	6,647	6,676			60,557	61,370	60,539
Oct	6,704	6,265			60,480	61,323	59,662
Nov	7,261	6,938			60,568	61,811	59,780
Dec	6,577	6,475			60,397	61,914	
Annual Total	81,531	82,336					
Total Place- ments ³							
Jan	7,615	7,415	7,388	100			
Feb	8,275	8,491	8,094	95			
Mar	8,325	7,997	7,391	92			
Apr	7,915	8,119	8,000	99			
May	8,647	8,982					
Jun	8,220	8,802					
Jul	7,687	8,083					
Aug	9,133	8,913					
Sep	8,047	8,002					
Oct	7,848	7,438					
Nov	9,017	8,202					
Dec	8,119	8,016					
Annual Total	98,848	98,460					

¹ Reported by leading breeders. Coverage may not be 100 percent. Includes expected pullet chicks from eggs sold during the preceding month at the rate of 125 pullet chicks per 30 dozen case of eggs.

² For Apr 2003, includes breeder pullet chicks hatched Jan 2002 through Sep 2002.

³ U.S. production of intended placements worldwide.

Procedures and Reliability

Data Sources: Primary data for the "**Chickens and Eggs**" report are from weekly and/or monthly questionnaires sent to producers. An attempt is made to collect information for layer and egg estimates from each known contractor and independent producer who has over 30,000 table egg layers. Coverage for operations with less than 30,000 table egg layers are estimated each month based on data reported in December. Approximately 900 contractors, independent egg producers, and started pullet operations are contacted each month. All known hatcheries, approximately 330, are contacted for information on a weekly and/or monthly basis.

Revisions: The previous month's estimates are subject to revision if late reports or corrected data indicates a different level. Additionally, revisions needed after the monthly report will be made at the end of the marketing year and published in the annual summaries of "**Chickens and Eggs Summary**" and "**Hatchery Production**".

Procedures and Reliability: Operations are mailed a questionnaire and given adequate time to respond by mail. Those that do not respond are phoned. Great care is exercised to ensure that all operations are accounted for during each survey period. However, there are usually missing reports that must be accounted for in the estimates.

Sound statistical methodology is employed to derive estimates from the reported data. All data are checked for unusual values. All operations' data are compared to their own past operating profiles and also to trends from other operations. Data for missing operations are estimated based on similar operations or historical data. Survey data are subject to non-sampling errors such as omissions and mistakes in reporting and in processing. While these errors cannot be measured directly, they are minimized by reviewing all data for consistency and reasonableness.

Egg-type chicks hatched are comprised of all chicks of egg-type domesticated breeds including males and chicks destined for hatchery supply flocks and research purposes. The relationship of chicks hatched to chicken inventory and poultry marketings is carefully monitored. The disposition of egg-type chicks hatched prior to placement into the laying flock can vary significantly, which can make comparisons to changes in layer inventory inconsistent over time.

Intended placement data reported by leading breeders include pullet chicks expected from eggs sold the preceding month. The breeders in this report account for a large percentage of replacement pullets for hatchery supply flocks. Production of replacement pullets by these breeders indicates the number of pullets available to hatchery supply flocks several months before the pullets will actually move into the flocks. "Hatchery Supply Flocks" include all generations of layers which could lay eggs to supply a hatchery. This includes the generations of parents, grandparents, great-grandparents, pedigree, etc. Also included are research flocks, vaccine flocks, and specific pathogen-free flocks. The broiler cumulative potential placements are a moving total of the intended placements 7-15 months earlier. The egg-type cumulative potential placements of 7-18 months represent the first laying cycle. Molting and additional laying cycles will increase the cumulative potential placements of egg-type hatching flocks.

The next "Chickens and Eggs" report will be released at 3 p.m. ET on June 23, 2003.

The United States Department of Agriculture (USDA) prohibits discrimination in all its programs on the basis of race, color, national origin, gender, religion, age, disability, political beliefs, sexual orientation, and marital or family status. (Not all prohibited bases apply to all programs.) Persons with disabilities who require alternative means for communication of program information (braille, large print, audiotape, etc.) should contact the USDA's TARGET Center at 202-720-2600 (voice and TDD).

To file a complaint of discrimination, write USDA, Director, Office of Civil Rights, Room 326-W, Whitten Building, 1400 Independence Avenue, SW, Washington, D.C., 20250-9410, or call 202-720-5964 (voice or TDD). USDA is an equal opportunity provider and employer.

ACCESS TO REPORTS!!

For your convenience, there are several ways to obtain NASS reports, data products, and services:

INTERNET ACCESS

All NASS reports are available free of charge on the worldwide Internet. For access, connect to the Internet and go to the NASS Home Page at: <http://www.usda.gov/nass/>. Select "Today's Reports" or Publications and then Reports Calendar or Publications and then Search, by Title or Subject.

E-MAIL SUBSCRIPTION

All NASS reports are available by subscription free of charge direct to your e-mail address. Starting with the NASS Home Page at <http://www.usda.gov/nass/>, click on **Publications**, then click on the **Subscribe by E-mail** button which takes you to the page describing e-mail delivery of reports. Finally, click on **Go to the Subscription Page** and follow the instructions.

AUTOFAX ACCESS

NASSFax service is available for some reports from your fax machine. Please call 202-720-2000, using the handset attached to your fax. Respond to the voice prompts. Document 0411 is a list of available reports.

PRINTED REPORTS OR DATA PRODUCTS

CALL OUR TOLL-FREE ORDER DESK: 800-999-6779 (U.S. and Canada)
Other areas, please call 703-605-6220 FAX: 703-605-6900
(Visa, MasterCard, check, or money order acceptable for payment.)

ASSISTANCE

For **assistance** with general agricultural statistics or further information about NASS or its products or services, contact the **Agricultural Statistics Hotline** at **800-727-9540**, 7:30 a.m. to 4:00 p.m. ET, or e-mail: nass@nass.usda.gov.
