

# Chickens and Eggs

Released June 23, 2003, by the National Agricultural Statistics Service (NASS), Agricultural Statistics Board, U.S. Department of Agriculture. For information on "Chickens and Eggs" call Tom Kruchten at (202) 690-4870, for "Hatch" call Jody Roberts at (202) 690-8632, office hours 7:30 a.m. to 4:00 p.m. ET.

## May Egg Production Down Slightly

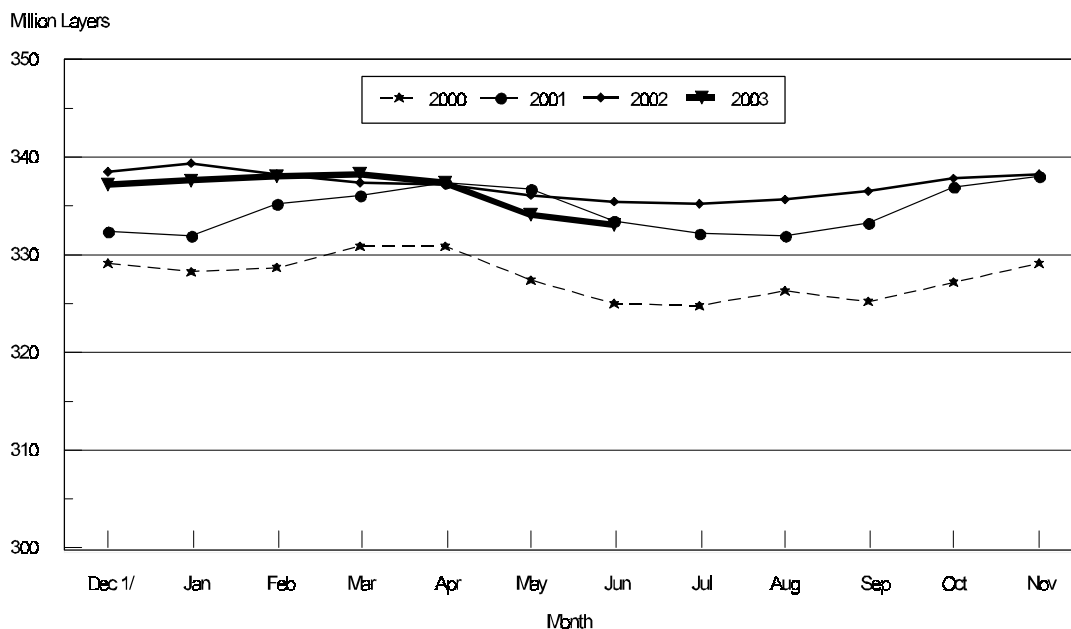
U.S. egg production totaled 7.27 billion during May 2003, down slightly from last year. Production included 6.15 billion table eggs and 1.13 billion hatching eggs, of which 1.06 billion were broiler-type and 64.0 million were egg-type. The total number of layers during May 2003 averaged 334 million, down 1 percent from a year earlier. May egg production per 100 layers was 2,180 eggs, up slightly from May 2002.

May 2003 contained 22 weekdays, one holiday and five Saturdays, compared to May 2002, with 23 weekdays, one holiday and four Saturdays.

### Special Note

This publication carries an additional table on page 13 with regional data for table egg layers in flocks of 75,000 and above. Reference date of December 1, 2002.

## All Layers: 1st of Month United States, 2000 - 2003



1/ Previous Year

All layers in the U.S. on June 1, 2003, totaled 333 million, down 1 percent from a year ago. The 333 million layers consisted of 273 million layers producing table or commercial type eggs, 57.5 million layers producing broiler-type hatching eggs, and 2.68 million layers producing egg-type hatching eggs. Rate of lay per day on June 1, 2003, averaged 69.9 eggs per 100 layers, down 1 percent from a year ago.

Laying flocks in the 30 major egg producing States produced 6.78 billion eggs during May 2003, down 1 percent from a year ago. The average number of layers during May, at 311 million, was down 1 percent from a year ago.

Individual State estimates are available for the 30 major egg producing States. These States are listed on page 8 of this release and account for approximately 94 percent of the total U.S. egg production. Production for the other States are grouped into an "Other States" category and combined with the 30 States published individually to obtain a U.S. estimate. Individual State estimates for "Other States" are available annually in the "**Chickens and Eggs Summary**" report.

### **Egg-Type Chicks Hatched Down 1 Percent**

Egg-type chicks hatched during May totaled 38.2 million, down 1 percent from May 2002. Eggs in incubators totaled 33.7 million on June 1, 2003, up 4 percent from a year ago.

Domestic placements of egg-type pullet chicks for future hatchery supply flocks by leading breeders totaled 279,000 during May 2003, down 13 percent from May 2002.

### **Broiler Hatch Down 1 Percent**

The May 2003 hatch of broiler-type chicks, at 792 million, was down 1 percent from May of the previous year. There were 652 million eggs in incubators on June 1, 2003, down 1 percent from a year earlier.

Leading breeders placed 7.6 million broiler-type pullet chicks for future domestic hatchery supply flocks during May 2003, up slightly from May 2002.

**All Layers: Average Number on Hand During the Month,  
United States, 2000-03**

Month	2000	2001	2002	2003
	<i>1,000 Layers</i>	<i>1,000 Layers</i>	<i>1,000 Layers</i>	<i>1,000 Layers</i>
Dec <sup>1</sup>	328,878	332,283	339,105	337,473
Jan	328,657	333,748	338,966	337,900
Feb	329,941	335,763	337,991	337,881
Mar	330,961	336,822	337,447	337,513
Apr	329,185	337,141	336,776	335,780
May	326,288	335,163	335,865	333,716
Jun	325,057	332,928	335,412	
Jul	325,663	332,244	335,498	
Aug	325,853	332,808	336,159	
Sep	326,337	335,276	337,264	
Oct	328,278	337,593	338,159	
Nov	330,830	338,366	337,808	

<sup>1</sup> December preceding year.

**Eggs: Production During the Month by Type,  
United States, 2002-03**

Month	Total Eggs		Table Eggs		Hatching Eggs	
	2002	2003	2002	2003	2002	2003
	<i>Million Eggs</i>	<i>Million Eggs</i>	<i>Million Eggs</i>	<i>Million Eggs</i>	<i>Million Eggs</i>	<i>Million Eggs</i>
Dec <sup>1</sup>	7,420	7,381	6,343	6,325	1,076	1,055
Jan	7,264	7,329	6,170	6,246	1,093	1,082
Feb	6,581	6,618	5,592	5,629	988	988
Mar	7,417	7,362	6,312	6,255	1,104	1,107
Apr	7,105	7,128	6,016	6,045	1,089	1,083
May	7,297	7,274	6,161	6,147	1,135	1,127
Jun	7,126		6,037		1,089	
Jul	7,347		6,243		1,104	
Aug	7,356		6,263		1,093	
Sep	7,147		6,100		1,046	
Oct	7,412		6,345		1,067	
Nov	7,226		6,204		1,020	
During Year	86,698	43,092	73,786	36,647	12,904	6,442

<sup>1</sup> December preceding year.

**Layers and Eggs: Layers on Hand and Eggs Produced by Type,  
and Forced Molt, United States, April-May 2002-03**

Item	Unit	2002	2003	2003 as % of 2002
Layers During Apr	1,000			
All Layers		336,776	335,780	100
Table Egg Type		275,909	275,618	100
Hatching Egg Type		60,867	60,162	99
Broiler-Type Hatching		58,205	57,460	99
Egg-Type Hatching		2,662	2,702	102
Eggs per 100 Layers During Apr	Number			
All Layers		2,110	2,123	101
Table Egg Type		2,180	2,193	101
Hatching Egg Type		1,789	1,800	101
Broiler-Type Hatching		1,764	1,775	101
Egg-Type Hatching		2,329	2,332	100
Eggs Produced During Apr	Million			
All Layers		7,105	7,128	100
Table Egg Type		6,016	6,045	100
Hatching Egg Type		1,089	1,083	99
Broiler-Type Hatching		1,027	1,020	99
Egg-Type Hatching		62	63	102
Layers on May 1	1,000			
All Layers		336,131	334,285	99
Table Egg Type		275,036	273,885	100
Hatching Egg Type		61,095	60,400	99
Broiler-Type Hatching		58,384	57,630	99
Egg-Type Hatching		2,711	2,770	102
Eggs per 100 Layers on May 1	Number			
All Layers		69.4	70.5	102
Table Egg Type		71.6	72.9	102
Hatching Egg Type		59.8	59.9	100
Broiler-Type Hatching		59.0	59.1	100
Egg-Type Hatching		76.3	77.5	102
Forced Molt Layers on May 1	Percent			
Percent Being Molted		5.7	4.3	75
Percent with Molt Completed		21.5	23.5	109
Layers Sold for Slaughter During Apr	1,000	16,739	15,408	92
Layers Rendered, Died, Destroyed, Composted or Disappeared For Any Reason During Apr	1,000	5,130	6,096	119
Pullets Less Than 20 Weeks of Age, May 1	1,000	95,413	97,534	102
Pullets Added During Apr <sup>1</sup>	1,000	22,892	23,647	103

<sup>1</sup> Pullet chicks one day old added to pullet flocks.

**Layers and Eggs: Layers on Hand and Eggs Produced by Type,  
and Forced Molt, United States, May-June 2002-03**

Item	Unit	2002 <sup>1</sup>	2003	2003 as % of 2002
Layers During May	1,000			
All Layers		335,865	333,716	99
Table Egg Type		274,802	273,420	99
Hatching Egg Type		61,063	60,296	99
Broiler-Type Hatching		58,369	57,566	99
Egg-Type Hatching		2,694	2,730	101
Eggs per 100 Layers During May	Number			
All Layers		2,173	2,180	100
Table Egg Type		2,242	2,248	100
Hatching Egg Type		1,859	1,869	101
Broiler-Type Hatching		1,833	1,847	101
Egg-Type Hatching		2,413	2,344	97
Eggs Produced During May	Million			
All Layers		7,297	7,274	100
Table Egg Type		6,161	6,147	100
Hatching Egg Type		1,135	1,127	99
Broiler-Type Hatching		1,070	1,063	99
Egg-Type Hatching		65	64	98
Layers on Jun 1	1,000			
All Layers		335,547	333,109	99
Table Egg Type		274,539	272,935	99
Hatching Egg Type		61,008	60,174	99
Broiler-Type Hatching		58,342	57,492	99
Egg-Type Hatching		2,666	2,682	101
Eggs per 100 Layers on Jun 1	Number			
All Layers		70.5	69.9	99
Table Egg Type		72.9	72.0	99
Hatching Egg Type		59.8	60.2	101
Broiler-Type Hatching		58.9	59.5	101
Egg-Type Hatching		78.1	75.3	96
Forced Molt Layers, Jun 1	Percent			
Percent Being Molted		4.2	4.2	100
Percent with Molt Completed		22.2	23.4	105
Layers Sold for Slaughter During May	1,000	16,653	14,924	90
Layers Rendered, Died, Destroyed, Composted or Disappeared For Any Reason During May	1,000	4,820	5,941	123
Pullets Less Than 20 Weeks of Age, Jun 1	1,000	95,806	99,962	104
Pullets Added During May <sup>2</sup>	1,000	24,836	25,122	101

<sup>1</sup> Revised.

<sup>2</sup> Pullet chicks one day old added to pullet flocks.

**Layers and Eggs: Layers on Hand and Eggs Produced by Type, and Forced  
Molt, 30 Selected States, April-May, 2002-03<sup>1</sup>**

Item	Unit	2002	2003	2003 as % of 2002
Layers During Apr	1,000			
All Layers		315,643	313,148	99
Table Egg Type		259,660	257,910	99
Hatching Egg Type		55,983	55,238	99
Broiler-Type Hatching Egg-Type Hatching		53,410 2,573	52,623 2,615	99 102
Eggs per 100 Layers During Apr	Number			
All Layers		2,114	2,126	101
Table Egg Type		2,184	2,195	101
Hatching Egg Type		1,790	1,801	101
Broiler-Type Hatching Egg-Type Hatching		1,764 2,332	1,775 2,333	101 100
Eggs Produced During Apr	Million			
All Layers		6,672	6,656	100
Table Egg Type		5,670	5,661	100
Hatching Egg Type		1,002	995	99
Broiler-Type Hatching Egg-Type Hatching		942 60	934 61	99 102
Layers on May 1	1,000			
All Layers		314,979	311,924	99
Table Egg Type		258,915	256,422	99
Hatching Egg Type		56,064	55,502	99
Broiler-Type Hatching Egg-Type Hatching		53,441 2,623	52,819 2,683	99 102
Eggs per 100 Layers on May 1	Number			
All Layers		69.7	70.6	101
Table Egg Type		71.8	72.9	102
Hatching Egg Type		59.9	59.9	100
Broiler-Type Hatching Egg-Type Hatching		59.1 76.4	59.0 77.5	100 101
Forced Molt Layers on May 1	Percent			
Percent Being Molted		5.5	4.1	75
Percent with Molt Completed		21.3	23.5	110
Layers Sold for Slaughter During Apr	1,000	15,438	14,229	92
Layers Rendered, Died, Destroyed, Composted or Disappeared For Any Reason During Apr	1,000	4,952	5,798	117
Pullets Less Than 20 Weeks of Age, May 1	1,000	89,471	90,930	102
Pullets Added During Apr <sup>2</sup>	1,000	21,482	22,265	104

<sup>1</sup> The 30 States are listed in the table on page 8.

<sup>2</sup> Pullet chicks one day old added to pullet flocks.

**Layers and Eggs: Layers on Hand and Eggs Produced by Type, and Forced Molt, 30 Selected States, May-June, 2002-03<sup>1</sup>**

Item	Unit	2002 <sup>2</sup>	2003	2003 as % of 2002
Layers During May	1,000			
All Layers		314,455	311,334	99
Table Egg Type		258,445	255,951	99
Hatching Egg Type		56,010	55,383	99
Broiler-Type Hatching		53,403	52,744	99
Egg-Type Hatching		2,607	2,639	101
Eggs per 100 Layers During May	1,000			
All Layers		2,176	2,179	100
Table Egg Type		2,245	2,247	100
Hatching Egg Type		1,860	1,867	100
Broiler-Type Hatching		1,833	1,843	101
Egg-Type Hatching		2,417	2,349	97
Eggs Produced During May	Million			
All Layers		6,844	6,784	99
Table Egg Type		5,802	5,750	99
Hatching Egg Type		1,042	1,034	99
Broiler-Type Hatching		979	972	99
Egg-Type Hatching		63	62	98
Layers on Jun 1	1,000			
All Layers		313,890	310,719	99
Table Egg Type		257,954	255,467	99
Hatching Egg Type		55,936	55,252	99
Broiler-Type Hatching		53,356	52,664	99
Egg-Type Hatching		2,580	2,588	100
Eggs per 100 Layers on Jun 1	Number			
All Layers		70.6	69.9	99
Table Egg Type		73.0	72.0	99
Hatching Egg Type		59.8	60.1	101
Broiler-Type Hatching		59.0	59.4	101
Egg-Type Hatching		77.9	75.4	97
Forced Molt Layers, Jun 1	Percent			
Percent Being Molted		4.3	4.1	95
Percent with Molt Completed		21.9	23.2	106
Layers Sold for Slaughter During May	1,000	15,634	13,920	89
Layers Rendered, Died, Destroyed, Composted or Disappeared For Any Reason During May	1,000	4,610	5,530	120
Pullets Less Than 20 Weeks of Age, Jun 1	1,000	90,295	93,340	103
Pullets Added During May <sup>3</sup>	1,000	23,675	23,341	99

<sup>1</sup> The 30 States are listed in the table on page 8.

<sup>2</sup> Revised.

<sup>3</sup> Pullet chicks one day old added to pullet flocks.

**Layers and Eggs: Layers on Hand and Eggs Produced by State  
and United States, During April 2002-03**

State	Table Egg Layers in Flocks 30,000 and Above		All Layers <sup>1</sup>		Eggs per 100 for All Layers <sup>1</sup>	
	2002	2003	2002	2003	2002	2003
	<i>1,000</i>	<i>1,000</i>	<i>1,000</i>	<i>1,000</i>	<i>Number</i>	<i>Number</i>
AL	2,461	2,216	10,198	9,739	1,863	1,869
AR	4,719	4,671	15,255	15,790	1,862	1,824
CA	23,047	19,016	23,723	19,573	2,104	2,105
CO	3,170	3,327	3,680	3,850	2,228	2,338
CT	3,045	2,864	3,103	2,921	2,285	2,225
FL	9,869	10,040	10,551	10,577	2,095	2,165
GA	10,787	11,013	20,438	20,516	2,031	2,042
HI	489	473	545	514	1,853	1,946
IL	3,341	3,173	3,577	3,401	2,097	2,264
IN	21,456	22,269	22,155	22,987	2,180	2,188
IA	36,097	37,424	36,937	38,204	2,220	2,167
ME	3,954	4,182	4,009	4,232	2,188	2,292
MD	2,911	2,529	3,141	2,715	2,229	2,357
MI	6,591	6,233	6,846	6,484	2,162	2,190
MN	10,895	10,698	11,620	11,306	2,186	2,229
MS	1,765	1,840	6,790	6,806	1,915	1,939
MO	5,586	5,425	6,988	6,885	2,132	2,222
NE	11,338	11,670	11,438	11,770	2,081	2,141
NY	3,637	3,483	3,872	3,733	2,299	2,357
NC	3,057	3,265	11,320	10,948	1,855	1,900
OH	29,839	29,183	30,350	29,687	2,129	2,149
OK	1,993	2,009	4,213	4,149	1,863	1,880
OR	2,544	2,459	2,729	2,628	2,272	2,169
PA	21,897	22,984	23,336	24,352	2,288	2,275
SC	4,282	4,275	5,333	5,421	2,119	2,121
SD	2,107	2,582	2,307	2,782	2,081	2,193
TX	14,026	14,328	18,476	18,799	2,127	2,133
VA	1,312	1,173	3,311	3,278	1,963	1,922
WA	5,078	4,871	5,159	4,952	2,233	2,100
WI	3,646	3,641	4,243	4,149	2,145	2,266
30 Sts	254,939	253,316	315,643	313,148	2,114	2,126
Oth Sts <sup>2</sup>	15,077	16,575	21,133	22,632	2,049	2,086
US	270,016	269,891	336,776	335,780	2,110	2,123

<sup>1</sup> Includes all layers and eggs produced in both table egg and hatching egg flocks regardless of size.

<sup>2</sup> Estimates for individual States are not available.



**Layers and Eggs: Layers on Hand and Eggs Produced by State  
and United States, During May 2002-03**

State	Table Egg Layers in Flocks 30,000 and Above		All Layers <sup>1</sup>		Eggs per 100 for All Layers <sup>1</sup>	
	2002	2003	2002	2003	2002	2003
	<i>1,000</i>	<i>1,000</i>	<i>1,000</i>	<i>1,000</i>	<i>Number</i>	<i>Number</i>
AL	2,361	2,050	10,207	9,591	1,891	1,950
AR	4,696	4,502	15,166	15,489	1,912	1,872
CA	22,801	19,146	23,479	19,718	2,173	2,125
CO	3,223	3,346	3,723	3,848	2,364	2,417
CT	3,075	2,813	3,135	2,869	2,265	2,300
FL	9,892	9,975	10,580	10,506	2,174	2,170
GA	10,199	10,989	19,968	20,553	2,068	2,082
HI	470	446	524	487	1,889	2,012
IL	3,262	3,183	3,501	3,415	2,228	2,255
IN	21,396	22,051	22,130	22,756	2,255	2,268
IA	36,035	36,811	36,875	37,612	2,283	2,204
ME	4,262	4,148	4,319	4,199	2,200	2,358
MD	2,914	2,488	3,165	2,705	2,370	2,292
MI	6,747	6,420	7,002	6,671	2,185	2,249
MN	10,935	10,525	11,650	11,130	2,223	2,300
MS	1,731	1,846	6,789	6,889	1,959	1,989
MO	5,430	5,375	6,869	6,826	2,242	2,300
NE	11,374	11,655	11,474	11,755	2,222	2,254
NY	3,626	3,423	3,856	3,672	2,360	2,478
NC	3,060	3,289	11,225	11,055	1,933	1,990
OH	29,870	28,878	30,393	29,388	2,181	2,188
OK	1,996	1,968	4,211	4,114	1,912	1,920
OR	2,504	2,551	2,685	2,723	2,421	2,314
PA	22,011	22,976	23,450	24,369	2,375	2,319
SC	4,196	4,180	5,268	5,351	2,183	2,149
SD	2,135	2,696	2,335	2,896	2,099	2,279
TX	13,689	14,066	18,102	18,462	2,166	2,194
VA	1,205	1,201	3,061	3,311	1,960	1,993
WA	5,110	4,779	5,191	4,860	2,254	2,181
WI	3,521	3,600	4,122	4,114	2,159	2,333
30 Sts	253,726	251,376	314,455	311,334	2,176	2,179
Oth Sts <sup>2</sup>	15,185	16,332	21,410	22,382	2,116	2,189
US	268,911	267,708	335,865	333,716	2,173	2,180

<sup>1</sup> Includes all layers and eggs produced in both table egg and hatching egg flocks regardless of size.

<sup>2</sup> Estimates for individual States are not available.

**Egg Production: By Type, State, and United States,  
April 2002-03**

State	Total Production		Table Eggs <sup>1</sup>		Hatching Eggs <sup>1</sup>	
	2002	2003	2002	2003	2002	2003
	<i>Million Eggs</i>	<i>Million Eggs</i>	<i>Million Eggs</i>	<i>Million Eggs</i>	<i>Million Eggs</i>	<i>Million Eggs</i>
AL	190	182	52	49	138	133
AR	284	288	102	100	182	188
CA	499	412				
CO	82	90				
CT	71	65				
FL	221	229	209	220	12	9
GA	415	419	240	247	175	172
HI	10.1	10.0	10.1	10.0	0	0
IL	75	77	72	74	3	3
IN	483	503	471	490	12	13
IA	820	828				
ME	88	97				
MD	70	64	66	61	4	3
MI	148	142				
MN	254	252	245	244	9	8
MS	130	132	40	42	90	90
MO	149	153				
NE	238	252	238	252	0	0
NY	89	88				
NC	210	208	73	76	137	132
OH	646	638				
OK	79	78	45	45	34	33
OR	62	57	60	56	2	1
PA	534	554	517	538	17	16
SC	113	115	94	96	19	19
SD	48	61	48	61	0	0
TX	393	401				
VA	65	63	30	24	35	39
WA	115	104				
WI	91	94				
30 Sts	6,672	6,656	5,670	5,661	1,002	995
Oth Sts <sup>2</sup>	433	472	346	384	87	88
US	7,105	7,128	6,016	6,045	1,089	1,083

<sup>1</sup> Data by type of flock not shown for some States to avoid disclosing individual operations.

<sup>2</sup> Estimates for individual States are not available.

**Egg Production: By Type, State, and United States,  
May 2002-03**

State	Total Production		Table Eggs <sup>1</sup>		Hatching Eggs <sup>1</sup>	
	2002	2003	2002	2003	2002	2003
	<i>Million Eggs</i>	<i>Million Eggs</i>	<i>Million Eggs</i>	<i>Million Eggs</i>	<i>Million Eggs</i>	<i>Million Eggs</i>
AL	193	187	50	48	143	139
AR	290	290	104	95	186	195
CA	510	419				
CO	88	93				
CT	71	66				
FL	230	228	217	219	13	9
GA	413	428	228	250	185	178
HI	9.9	9.8	9.9	9.8	0	0
IL	78	77	75	74	3	3
IN	499	516	486	503	13	13
IA	842	829				
ME	95	99				
MD	75	62	70	58	5	4
MI	153	150				
MN	259	256	250	247	9	9
MS	133	137	39	43	94	94
MO	154	157				
NE	255	265	255	265	0	0
NY	91	91				
NC	217	220	74	81	143	139
OH	663	643				
OK	81	79	46	45	35	34
OR	65	63	63	61	2	2
PA	557	565	538	548	19	17
SC	115	115	95	95	20	20
SD	49	66	49	66	0	0
TX	392	405				
VA	60	66	27	27	33	39
WA	117	106				
WI	89	96				
30 Sts	6,844	6,784	5,802	5,750	1,042	1,034
Oth Sts <sup>2</sup>	453	490	359	397	93	93
US	7,297	7,274	6,161	6,147	1,135	1,127

<sup>1</sup> Data by type of flock not shown for some States to avoid disclosing individual operations.

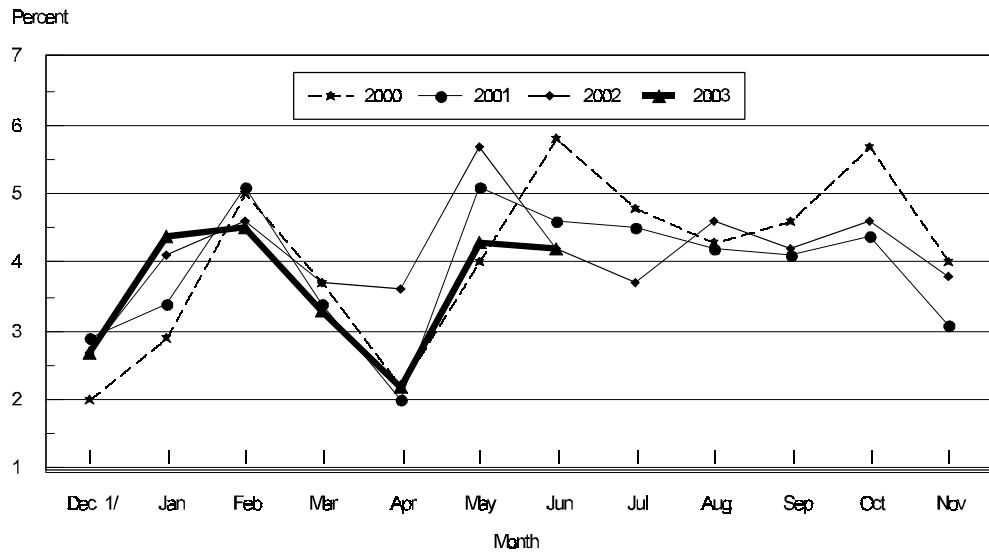
<sup>2</sup> Estimates for individual States are not available.

**Forced Molt: Percent of All Layers by Month,  
United States, 2002-03<sup>1</sup>**

Month	Percent Being Molted		Percent with Molt Completed	
	2002	2003	2002	2003
	<i>Percent</i>	<i>Percent</i>	<i>Percent</i>	<i>Percent</i>
Jan	4.1	4.4	22.7	23.7
Feb	4.6	4.5	22.0	23.9
Mar	3.7	3.3	22.2	23.6
Apr	3.6	2.2	22.2	24.5
May	5.7	4.3	21.5	23.5
Jun	4.2	4.2	22.2	23.4
Jul	3.7		22.8	
Aug	4.6		21.9	
Sep	4.2		23.4	
Oct	4.6		23.7	
Nov	3.8		23.5	
Dec	2.7		23.7	

<sup>1</sup> As of first of month.

**All Layers : United States  
Percent Being Molted, 2000 - 2003  
First of Month**



1/ Previous Year

**Forced Molt: Percent of All Layers by State  
and United States, June 2002-03 <sup>1</sup>**

State	Percent Being Molted		Percent with Molt Completed	
	2002	2003	2002	2003
	<i>Percent</i>	<i>Percent</i>	<i>Percent</i>	<i>Percent</i>
AL	4.0	0.0	7.0	6.0
AR	2.5	2.0	8.0	8.5
CA	4.5	6.5	27.5	35.5
CO	7.0	3.5	19.5	20.0
CT	6.5	3.5	5.0	7.5
FL	5.0	6.0	32.5	27.5
GA	6.0	6.0	14.0	13.5
HI	11.5	4.0	44.5	57.0
IL	7.5	4.5	36.5	14.5
IN	3.5	1.5	33.5	33.5
IA	3.0	5.0	30.0	35.5
ME	1.0	0.0	1.0	0.0
MD	6.5	10.0	37.5	27.0
MI	4.5	3.0	23.5	27.5
MN	3.5	0.5	30.0	33.0
MS	2.0	5.0	10.0	8.0
MO	5.0	1.5	21.5	13.5
NE	3.5	7.0	29.5	25.0
NY	0.0	0.5	7.5	4.5
NC	3.0	3.0	6.0	8.0
OH	5.0	6.0	18.5	25.0
OK	0.0	0.0	5.0	8.0
OR	0.5	4.0	32.5	28.0
PA	6.0	5.0	15.5	19.0
SC	6.5	0.0	31.0	22.0
SD	3.0	3.0	28.0	22.0
TX	3.5	3.0	20.0	24.5
VA	4.5	3.0	13.0	14.0
WA	11.0	11.5	42.0	43.5
WI	6.5	1.0	38.5	29.5
30 Sts	4.3	4.1	21.9	23.2
Oth Sts <sup>2</sup>	3.9	5.7	27.3	25.8
US	4.2	4.2	22.2	23.4

<sup>1</sup> As of first of month.

<sup>2</sup> Estimates for individual States are not available.

**Table Egg Layers: Flocks 75,000 and Above,  
Inventory and Eggs Per 100 Layers,  
By Region and United States, December 1, 2002**

Geographic Division	Inventory	Eggs Laid Per 100 Layers First Day of the Month
	<i>1,000</i>	<i>Number</i>
North Atlantic	35,058	74.3
E North Central	65,754	72.5
W North Central	67,862	73.1
South Atlantic	33,858	75.1
South Central	28,977	73.6
West	39,494	76.2
US	271,003	73.8

**Hatchery Production: Eggs in Incubators, Chicks Hatched,  
and Placements by Type, United States, May-June 2002-03**

Item	2002	2003	2003 as % of 2002
	<i>1,000</i>	<i>1,000</i>	<i>Percent</i>
<b>Egg-Type</b>			
Eggs in Incubators on Jun 1	32,442	33,705	104
Chicks Hatched During May	38,751	38,206	99
Chicks Hatched Jan thru May	183,928	175,950	96
Pullets Hatched During May for Intended Placements in Hatchery Supply Flocks	319	279	87
7-18 Month Earlier <sup>1</sup>	3,134	2,980	95
<b>Broiler-Type</b>			
Eggs in Incubators on Jun 1	658,430	651,893	99
Chicks Hatched During May	799,262	791,905	99
Chicks Hatched Jan thru May	3,836,054	3,782,249	99
Pullets Hatched During May for Intended Placements in Hatchery Supply Flocks	7,597	7,612	100
7-15 Months Earlier <sup>2</sup>	61,008	62,659	103

<sup>1</sup> 2003 includes pullet chicks hatched Nov 2001 through Oct 2002.

<sup>2</sup> 2003 includes pullet chicks hatched Feb 2002 through Oct 2002.

**Egg-Type Eggs in Incubators: By Region and United States,  
June 1, 2002-03**

Geographic Division	2002	2003	2003 as % of 2002
	<i>1,000</i>	<i>1,000</i>	<i>Percent</i>
North Atlantic	5,039	4,761	94
E North Central	6,692	7,492	112
W North Central	6,721	7,531	112
South Atlantic	3,840	2,910	76
South Central	5,416	5,193	96
West	4,734	5,818	123
<b>US</b>	<b>32,442</b>	<b>33,705</b>	<b>104</b>

**Regional Listing:**

North Atlantic = CT, ME, MA, NH, NJ, NY, PA, RI, VT.

E North Central = IL, IN, MI, OH, WI.

W North Central = IA, KS, MN, MO, NE, ND, SD.

South Atlantic = DE, FL, GA, MD, NC, SC, VA, WV.

South Central = AL, AR, KY, LA, MS, OK, TN, TX.

West = AK, AZ, CA, CO, HI, ID, MT, NM, NV, OR, UT, WA, WY.

**Egg-Type Chicks Hatched: By State and United States,  
May 2002-03**

State	May			Jan-May		
	2002	2003	2003 as % of 2002	2002	2003	2003 as % of 2002
	<i>1,000</i>	<i>1,000</i>	<i>Percent</i>	<i>1,000</i>	<i>1,000</i>	<i>Percent</i>
AR	894	965	108	3,929	4,010	102
FL	564	692	123	2,943	3,111	106
GA	2,192	2,429	111	11,000	12,037	109
IN	4,943	5,191	105	25,446	24,428	96
IA	6,233	6,561	105	26,986	29,377	109
MN	1,303	1,458	112	7,015	7,261	104
PA	4,200	4,247	101	22,103	21,061	95
Oth Sts <sup>1</sup>	18,422	16,663	90	84,506	74,665	88
US	38,751	38,206	99	183,928	175,950	96

<sup>1</sup> Not published separately to avoid disclosing data for individual operations.

**Egg-Type Chicks Hatched: By Month, United States, 2001-03**

Month	By Months				Cumulative			
	2001	2002	2003	2003 as % of 2002	2001	2002	2003	2003 as % of 2002
	<i>1,000</i>	<i>1,000</i>	<i>1,000</i>	<i>Percent</i>	<i>1,000</i>	<i>1,000</i>	<i>1,000</i>	<i>Percent</i>
Jan	36,728	35,647	33,499	94	36,728	35,647	33,499	94
Feb	37,836	34,465	29,988	87	74,564	70,112	63,487	91
Mar	41,015	36,977	36,726	99	115,579	107,089	100,213	94
Apr	42,789	38,088	37,531	99	158,368	145,177	137,744	95
May	42,655	38,751	38,206	99	201,023	183,928	175,950	96
Jun	40,822	35,136			241,845	219,064		
Jul	38,651	35,573			280,496	254,637		
Aug	34,987	35,681			315,483	290,318		
Sep	37,140	35,734			352,623	326,052		
Oct	35,825	32,149			388,448	358,201		
Nov	32,355	31,146			420,803	389,347		
Dec	31,870	31,973			452,673	421,320		

**Intended Placements: Egg-Type Pullet Chicks for Hatchery Supply  
Flocks by Month and Total, United States, 2001-03<sup>1</sup>**

Month	Pullet Chicks Hatched			2003 as % of 2002	Cumulative Potential Placements Relative to Current Supply Flocks 7-18 Months Earlier <sup>2</sup>		
	2001	2002	2003		2001	2002	2003
	<i>1,000</i>	<i>1,000</i>	<i>1,000</i>	<i>Percent</i>	<i>1,000</i>	<i>1,000</i>	<i>1,000</i>
Jan	236	228	198	87	3,129	3,158	2,974
Feb	214	247	221	89	3,191	3,205	2,916
Mar	284	237	315	133	3,090	3,239	2,886
Apr	311	295	276	94	3,096	3,225	2,944
May	315	319	279	87	3,057	3,134	2,980
Jun	261	221			3,103	3,087	2,946
Jul	340	282			3,173	3,048	2,927
Aug	251	221			3,197	3,040	2,897
Sep	219	277			3,160	3,073	2,871
Oct	150	186			3,158	3,026	2,949
Nov	261	227			3,160	3,010	2,930
Dec	206	187			3,132	3,014	2,890
Total	3,048	2,927					

<sup>1</sup> Reported by leading breeders. Coverage may not be 100 percent. Includes expected pullet chicks from eggs sold during the preceding month at the rate of 125 pullet chicks per 30 dozen case of eggs.

<sup>2</sup> For May 2003, includes breeder pullet chicks hatched Nov 2001 through Oct 2002. The 7-18 months represent the first laying cycle. Molting and additional laying cycles will increase the cumulative potential placements.

**Broiler-Type Eggs in Incubators: By Region  
and United States, June 1, 2002-03**

Geographic Division	2002	2003	2003 as % of 2002
	<i>1,000</i>	<i>1,000</i>	<i>Percent</i>
North Atlantic	12,778	12,264	96
E North Central	7,891	8,440	107
W North Central	21,973	22,705	103
South Atlantic	245,316	240,077	98
South Central	346,084	342,872	99
West	24,388	25,535	105
US	658,430	651,893	99



**Broiler-Type Chicks Hatched: By State  
and United States, May 2002-03**

State	May			Jan-May		
	2002	2003	2003 as % of 2002	2002	2003	2003 as % of 2002
	<i>1,000</i>	<i>1,000</i>	<i>Percent</i>	<i>1,000</i>	<i>1,000</i>	<i>Percent</i>
AL	108,937	106,392	98	526,686	506,769	96
AR	111,714	112,964	101	543,066	544,618	100
DE	13,086	13,656	104	63,084	63,755	101
FL	8,811	5,587	63	41,882	28,134	67
GA	116,924	117,670	101	560,732	559,746	100
KY	24,631	24,673	100	116,798	118,498	101
LA	13,962	13,739	98	67,151	67,132	100
MD	35,921	35,666	99	171,944	171,707	100
MS	70,010	70,870	101	341,696	344,790	101
NC	71,984	70,083	97	340,627	330,182	97
OK	23,373	23,330	100	113,397	116,831	103
PA	13,366	13,025	97	64,570	61,518	95
SC	16,506	17,065	103	81,679	83,984	103
TX	57,878	55,723	96	277,806	266,080	96
VA	23,956	24,658	103	118,256	118,632	100
CA, MO, TN, & WV	63,443	63,650	100	296,587	293,629	99
19 Sts <sup>1</sup>	774,502	768,751	99	3,725,961	3,676,005	99
Oth Sts <sup>2</sup>	24,760	23,154	94	110,093	106,244	97
US	799,262	791,905	99	3,836,054	3,782,249	99

<sup>1</sup> States in the weekly hatchery production estimating program.

<sup>2</sup> Not published separately to avoid disclosing data for individual operations.

**Broiler-Type Chicks Hatched: By Month, United States, 2001-03**

Month	By Months				Cumulative			
	2001	2002	2003	2003 as % of 2002	2001	2002	2003	2003 as % of 2002
	<i>1,000</i>	<i>1,000</i>	<i>1,000</i>	<i>Percent</i>	<i>1,000</i>	<i>1,000</i>	<i>1,000</i>	<i>Percent</i>
Jan	745,939	776,961	759,773	98	745,939	776,961	759,773	98
Feb	683,255	703,323	694,590	99	1,429,194	1,480,284	1,454,363	98
Mar	778,760	791,093	774,836	98	2,207,954	2,271,377	2,229,199	98
Apr	755,455	765,415	761,145	99	2,963,409	3,036,792	2,990,344	98
May	785,704	799,262	791,905	99	3,749,113	3,836,054	3,782,249	99
Jun	766,534	776,332			4,515,647	4,612,386		
Jul	769,448	781,707			5,285,095	5,394,093		
Aug	771,550	780,020			6,056,645	6,174,113		
Sep	738,379	740,396			6,795,024	6,914,509		
Oct	748,274	720,564			7,543,298	7,635,073		
Nov	703,365	690,052			8,246,663	8,325,125		
Dec	774,453	753,875			9,021,116	9,079,000		

**Intended Placements: Broiler-Type Pullet Chicks for Hatchery  
Supply Flocks by Month and Total, 2001-03 <sup>1</sup>**

Month	Pullet Chicks Hatched			2003 as % of 2002	Cumulative Potential Placements Relative to Current Supply Flocks 7-15 Months Earlier <sup>2</sup>		
	2001	2002	2003		2001	2002	2003
	<i>1,000</i>	<i>1,000</i>	<i>1,000</i>	<i>Percent</i>	<i>1,000</i>	<i>1,000</i>	<i>1,000</i>
US Place- ments							
Jan	6,685	6,264	6,269	100	63,304	60,750	62,473
Feb	6,748	7,275	6,659	92	62,493	60,382	62,371
Mar	6,752	6,775	6,329	93	62,797	60,771	62,559
Apr	6,398	6,814	6,720	99	62,267	60,989	62,658
May	7,117	7,597	7,612	100	62,100	61,008	62,659
Jun	6,822	7,206			62,204	61,521	62,322
Jul	6,326	6,602			61,323	61,346	62,022
Aug	7,494	7,449			61,244	61,212	61,477
Sep	6,647	6,676			60,557	61,370	60,539
Oct	6,704	6,265			60,480	61,323	59,662
Nov	7,261	6,938			60,568	61,811	59,780
Dec	6,577	6,475			60,397	61,914	59,943
Annual Total	81,531	82,336					
Total Place- ments <sup>3</sup>							
Jan	7,615	7,415	7,388	100			
Feb	8,275	8,491	8,094	95			
Mar	8,325	7,997	7,391	92			
Apr	7,915	8,119	8,000	99			
May	8,647	8,982	8,920	99			
Jun	8,220	8,802					
Jul	7,687	8,083					
Aug	9,133	8,913					
Sep	8,047	8,002					
Oct	7,848	7,438					
Nov	9,017	8,202					
Dec	8,119	8,016					
Annual Total	98,848	98,460					

<sup>1</sup> Reported by leading breeders. Coverage may not be 100 percent. Includes expected pullet chicks from eggs sold during the preceding month at the rate of 125 pullet chicks per 30 dozen case of eggs.

<sup>2</sup> For May 2003, includes breeder pullet chicks hatched Feb 2002 through Oct 2002.

<sup>3</sup> U.S. production of intended placements worldwide.

## Procedures and Reliability

**Data Sources:** Primary data for the "**Chickens and Eggs**" report are from weekly and/or monthly questionnaires sent to producers. An attempt is made to collect information for layer and egg estimates from each known contractor and independent producer who has over 30,000 table egg layers. Coverage for operations with less than 30,000 table egg layers are estimated each month based on data reported in December. Approximately 900 contractors, independent egg producers, and started pullet operations are contacted each month. All known hatcheries, approximately 330, are contacted for information on a weekly and/or monthly basis.

**Revisions:** The previous month's estimates are subject to revision if late reports or corrected data indicates a different level. Additionally, revisions needed after the monthly report will be made at the end of the marketing year and published in the annual summaries of "**Chickens and Eggs Summary**" and "**Hatchery Production**".

**Procedures and Reliability:** Operations are mailed a questionnaire and given adequate time to respond by mail. Those that do not respond are phoned. Great care is exercised to ensure that all operations are accounted for during each survey period. However, there are usually missing reports that must be accounted for in the estimates.

Sound statistical methodology is employed to derive estimates from the reported data. All data are checked for unusual values. All operations' data are compared to their own past operating profiles and also to trends from other operations. Data for missing operations are estimated based on similar operations or historical data. Survey data are subject to non-sampling errors such as omissions and mistakes in reporting and in processing. While these errors cannot be measured directly, they are minimized by reviewing all data for consistency and reasonableness.

Egg-type chicks hatched are comprised of all chicks of egg-type domesticated breeds including males and chicks destined for hatchery supply flocks and research purposes. The relationship of chicks hatched to chicken inventory and poultry marketings is carefully monitored. The disposition of egg-type chicks hatched prior to placement into the laying flock can vary significantly, which can make comparisons to changes in layer inventory inconsistent over time.

Intended placement data reported by leading breeders include pullet chicks expected from eggs sold the preceding month. The breeders in this report account for a large percentage of replacement pullets for hatchery supply flocks. Production of replacement pullets by these breeders indicates the number of pullets available to hatchery supply flocks several months before the pullets will actually move into the flocks. "Hatchery Supply Flocks" include all generations of layers which could lay eggs to supply a hatchery. This includes the generations of parents, grandparents, great-grandparents, pedigree, etc. Also included are research flocks, vaccine flocks, and specific pathogen-free flocks. The broiler cumulative potential placements are a moving total of the intended placements 7-15 months earlier. The egg-type cumulative potential placements of 7-18 months represent the first laying cycle. Molting and additional laying cycles will increase the cumulative potential placements of egg-type hatching flocks.

The next "Chickens and Eggs" report will be released at 3 p.m. ET on July 22, 2003.

The United States Department of Agriculture (USDA) prohibits discrimination in all its programs on the basis of race, color, national origin, gender, religion, age, disability, political beliefs, sexual orientation, and marital or family status. (Not all prohibited bases apply to all programs.) Persons with disabilities who require alternative means for communication of program information (braille, large print, audiotape, etc.) should contact the USDA's TARGET Center at 202-720-2600 (voice and TDD).

To file a complaint of discrimination, write USDA, Director, Office of Civil Rights, Room 326-W, Whitten Building, 1400 Independence Avenue, SW, Washington, D.C., 20250-9410, or call 202-720-5964 (voice or TDD). USDA is an equal opportunity provider and employer.

## **ACCESS TO REPORTS!!**

---

For your convenience, there are several ways to obtain NASS reports, data products, and services:

### **INTERNET ACCESS**

All NASS reports are available free of charge on the worldwide Internet. For access, connect to the Internet and go to the NASS Home Page at: <http://www.usda.gov/nass/>. Select "Today's Reports" or Publications and then Reports Calendar or Publications and then Search, by Title or Subject.

### **E-MAIL SUBSCRIPTION**

All NASS reports are available by subscription free of charge direct to your e-mail address. Starting with the NASS Home Page at <http://www.usda.gov/nass/>, click on **Publications**, then click on the **Subscribe by E-mail** button which takes you to the page describing e-mail delivery of reports. Finally, click on **Go to the Subscription Page** and follow the instructions.

### **AUTOFAX ACCESS**

NASSFax service is available for some reports from your fax machine. Please call 202-720-2000, using the handset attached to your fax. Respond to the voice prompts. Document 0411 is a list of available reports.

-----

### **PRINTED REPORTS OR DATA PRODUCTS**

**CALL OUR TOLL-FREE ORDER DESK: 800-999-6779 (U.S. and Canada)**  
**Other areas, please call 703-605-6220      FAX: 703-605-6900**  
**(Visa, MasterCard, check, or money order acceptable for payment.)**

-----

### **ASSISTANCE**

For **assistance** with general agricultural statistics or further information about NASS or its products or services, contact the **Agricultural Statistics Hotline** at **800-727-9540**, 7:30 a.m. to 4:00 p.m. ET, or e-mail: [nass@nass.usda.gov](mailto:nass@nass.usda.gov).

---