

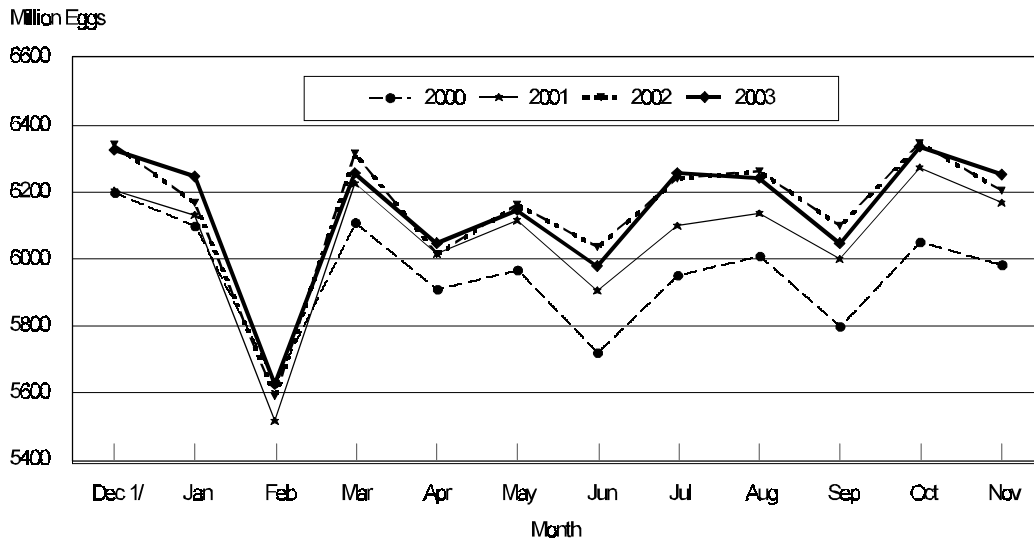
Released December 22, 2003, by the National Agricultural Statistics Service (NASS), Agricultural Statistics Board, U.S. Department of Agriculture. For information on "Chickens and Eggs" call Tom Kruchten at (202) 690-4870, for "Hatch" call Jody Roberts at (202) 690-8632, office hours 7:30 a.m. to 4:00 p.m. ET.

November Egg Production up 1 Percent

U.S. egg production totaled 7.28 billion during November 2003, up 1 percent from last year. Production included 6.25 billion table eggs and 1.02 billion hatching eggs, of which 968 million were broiler-type and 56.0 million were egg-type. The total number of layers during November 2003 averaged 336 million, down 1 percent from a year earlier. November egg production per 100 layers was 2,165 eggs, up one percent from November 2002.

November 2003 contain 20 weekdays, two holidays and five Saturdays compared to November 2002 which contain 21 weekdays, two holidays, and five Saturdays.

Table Egg Production By Months United States, 2000 - 2003



1/ Previous Year

All layers in the U.S. on December 1, 2003, totaled 338 million, up slightly from a year ago. The 338 million layers consisted of 280 million layers producing table or commercial type eggs, 54.9 million layers producing broiler-type hatching eggs, and 2.51 million layers producing egg-type hatching eggs. Rate of lay per day on December 1, 2003, averaged 72.4 eggs per 100 layers, up 2 percent from a year ago.

Laying flocks in the 30 major egg producing States produced 6.79 billion eggs during November 2003, up slightly from a year ago. The average number of layers during November, at 313 million, was down 1 percent from a year ago.

Individual State estimates are available for the 30 major egg producing States. These States are listed on page 8 of this release and account for approximately 94 percent of the total U.S. egg production. Production for the other States are grouped into an "Other States" category and combined with the 30 States published individually to obtain a U.S. estimate.

Egg-Type Chicks Hatched Down 3 Percent

Egg-type chicks hatched during November totaled 30.1 million, down 3 percent from November 2002. Eggs in incubators totaled 33.3 million on December 1, 2003, up 14 percent from a year ago.

Domestic placements of egg-type pullet chicks for future hatchery supply flocks by leading breeders totaled 315,000 during November 2003, up 39 percent from November 2002.

Broiler Hatch Up 3 Percent

The November 2003 hatch of broiler-type chicks, at 708 million, was up 3 percent from November of the previous year. There were 636 million eggs in incubators on December 1, 2003, up 3 percent from a year earlier.

Leading breeders placed 6.9 million broiler-type pullet chicks for future domestic hatchery supply flocks during November 2003, up slightly from November 2002.

**All Layers: Average Number on Hand During the Month,
United States, 2000-03**

Month	2000	2001	2002	2003
	<i>1,000 Layers</i>	<i>1,000 Layers</i>	<i>1,000 Layers</i>	<i>1,000 Layers</i>
Dec ¹	328,878	332,283	339,105	337,473
Jan	328,657	333,748	338,966	337,900
Feb	329,941	335,763	337,991	337,881
Mar	330,961	336,822	337,447	337,513
Apr	329,185	337,141	336,776	335,780
May	326,288	335,163	335,865	333,778
Jun	325,057	332,928	335,412	332,417
Jul	325,663	332,244	335,498	331,823
Aug	325,853	332,808	336,159	332,124
Sep	326,337	335,276	337,264	332,069
Oct	328,278	337,593	338,159	333,151
Nov	330,830	338,366	337,808	336,052

¹ December preceding year.

**Eggs: Production During the Month by Type,
United States, 2002-03**

Month	Total Eggs		Table Eggs		Hatching Eggs	
	2002	2003	2002	2003	2002	2003
	<i>Million Eggs</i>	<i>Million Eggs</i>	<i>Million Eggs</i>	<i>Million Eggs</i>	<i>Million Eggs</i>	<i>Million Eggs</i>
Dec ¹	7,420	7,381	6,343	6,325	1,076	1,055
Jan	7,264	7,329	6,170	6,246	1,093	1,082
Feb	6,581	6,618	5,592	5,629	988	988
Mar	7,417	7,362	6,312	6,255	1,104	1,107
Apr	7,105	7,128	6,016	6,045	1,089	1,083
May	7,297	7,275	6,161	6,148	1,135	1,127
Jun	7,126	7,053	6,037	5,978	1,089	1,075
Jul	7,347	7,345	6,243	6,259	1,104	1,085
Aug	7,356	7,312	6,263	6,242	1,093	1,069
Sep	7,147	7,063	6,100	6,047	1,046	1,016
Oct	7,412	7,390	6,345	6,333	1,067	1,057
Nov	7,226	7,275	6,204	6,251	1,020	1,024
During Year	86,698	86,531	73,786	73,758	12,904	12,768

¹ December preceding year.

**Layers and Eggs: Layers on Hand and Eggs Produced by Type,
and Forced Molt, United States, October-November 2002-03**

Item	Unit	2002	2003	2003 as % of 2002
Layers During Oct	1,000			
All Layers		338,159	333,151	99
Table Egg Type		280,757	275,972	98
Hatching Egg Type		57,402	57,179	100
Broiler-Type Hatching		54,887	54,763	100
Egg-Type Hatching		2,515	2,416	96
Eggs per 100 Layers During Oct	Number			
All Layers		2,192	2,218	101
Table Egg Type		2,260	2,295	102
Hatching Egg Type		1,859	1,849	99
Broiler-Type Hatching		1,838	1,826	99
Egg-Type Hatching		2,306	2,359	102
Eggs Produced During Oct	Million			
All Layers		7,412	7,390	100
Table Egg Type		6,345	6,333	100
Hatching Egg Type		1,067	1,057	99
Broiler-Type Hatching		1,009	1,000	99
Egg-Type Hatching		58	57	98
Layers on Nov 1	1,000			
All Layers		338,350	334,355	99
Table Egg Type		280,973	277,181	99
Hatching Egg Type		57,377	57,174	100
Broiler-Type Hatching		54,803	54,692	100
Egg-Type Hatching		2,574	2,482	96
Eggs per 100 Layers on Nov 1	Number			
All Layers		71.1	71.8	101
Table Egg Type		73.4	74.3	101
Hatching Egg Type		59.8	60.1	101
Broiler-Type Hatching		59.1	59.5	101
Egg-Type Hatching		75.6	74.7	99
Forced Molt Layers on Nov 1	Percent			
Percent Being Molted		3.8	3.4	89
Percent with Molt Completed		23.5	24.1	103
Layers Sold for Slaughter During Oct	1,000	15,229	12,440	82
Layers Rendered, Died, Destroyed, Composted or Disappeared For Any Reason During Oct	1,000	4,223	5,305	126
Pullets Less Than 20 Weeks of Age, Nov 1	1,000	92,957	100,066	108
Pullets Added During Oct ¹	1,000	21,298	22,925	108

¹ Pullet chicks one day old added to pullet flocks.

**Layers and Eggs: Layers on Hand and Eggs Produced by Type,
and Forced Molt, United States, November-December 2002-03**

Item	Unit	2002 ¹	2003	2003 as % of 2002
Layers During Nov	1,000			
All Layers		337,808	336,052	99
Table Egg Type		280,830	278,725	99
Hatching Egg Type		56,978	57,327	101
Broiler-Type Hatching		54,397	54,826	101
Egg-Type Hatching		2,581	2,501	97
Eggs per 100 Layers During Nov	Number			
All Layers		2,139	2,165	101
Table Egg Type		2,209	2,243	102
Hatching Egg Type		1,790	1,786	100
Broiler-Type Hatching		1,768	1,766	100
Egg-Type Hatching		2,247	2,239	100
Eggs Produced During Nov	Million			
All Layers		7,226	7,275	101
Table Egg Type		6,204	6,251	101
Hatching Egg Type		1,020	1,024	100
Broiler-Type Hatching		962	968	101
Egg-Type Hatching		58	56	97
Layers on Dec 1	1,000			
All Layers		337,213	337,713	100
Table Egg Type		280,659	280,252	100
Hatching Egg Type		56,554	57,461	102
Broiler-Type Hatching		53,976	54,949	102
Egg-Type Hatching		2,578	2,512	97
Eggs per 100 Layers on Dec 1	Number			
All Layers		71.3	72.4	102
Table Egg Type		73.7	75.2	102
Hatching Egg Type		59.4	58.9	99
Broiler-Type Hatching		58.6	58.1	99
Egg-Type Hatching		74.3	75.8	102
Forced Molt Layers, Dec 1	Percent			
Percent Being Molted		2.7	2.5	93
Percent with Molt Completed		23.7	22.6	95
Layers Sold for Slaughter During Nov	1,000	15,124	12,989	86
Layers Rendered, Died, Destroyed, Composted or Disappeared For Any Reason During Nov	1,000	4,051	4,801	119
Pullets Less Than 20 Weeks of Age, Dec 1	1,000	93,385	98,048	105
Pullets Added During Nov ²	1,000	20,813	20,745	100

¹ Revised.

² Pullet chicks one day old added to pullet flocks.

**Layers and Eggs: Layers on Hand and Eggs Produced by Type, and Forced
Molt, 30 Selected States, October-November, 2002-03¹**

Item	Unit	2002	2003	2003 as % of 2002
Layers During Oct	1,000			
All Layers		316,743	310,844	98
Table Egg Type		263,885	258,243	98
Hatching Egg Type		52,858	52,601	100
Broiler-Type Hatching		50,439	50,268	100
Egg-Type Hatching		2,419	2,333	96
Eggs per 100 Layers During Oct	Number			
All Layers		2,190	2,219	101
Table Egg Type		2,257	2,294	102
Hatching Egg Type		1,856	1,852	100
Broiler-Type Hatching		1,834	1,828	100
Egg-Type Hatching		2,315	2,357	102
Eggs Produced During Oct	Million			
All Layers		6,938	6,898	99
Table Egg Type		5,957	5,924	99
Hatching Egg Type		981	974	99
Broiler-Type Hatching		925	919	99
Egg-Type Hatching		56	55	98
Layers on Nov 1	1,000			
All Layers		316,885	311,941	98
Table Egg Type		263,960	259,377	98
Hatching Egg Type		52,925	52,564	99
Broiler-Type Hatching		50,450	50,173	99
Egg-Type Hatching		2,475	2,391	97
Eggs per 100 Layers on Nov 1	Number			
All Layers		71.1	71.9	101
Table Egg Type		73.4	74.2	101
Hatching Egg Type		59.8	60.2	101
Broiler-Type Hatching		59.0	59.5	101
Egg-Type Hatching		75.4	74.7	99
Forced Molt Layers on Nov 1	Percent			
Percent Being Molted		3.8	3.5	92
Percent with Molt Completed		23.2	23.8	103
Layers Sold for Slaughter During Oct	1,000	13,938	11,605	83
Layers Rendered, Died, Destroyed, Composted or Disappeared For Any Reason During Oct	1,000	3,978	4,842	122
Pullets Less Than 20 Weeks of Age, Nov 1	1,000	87,119	93,021	107
Pullets Added During Oct ²	1,000	19,995	21,670	108

¹ The 30 States are listed in the table on page 8.

² Pullet chicks one day old added to pullet flocks.

Layers and Eggs: Layers on Hand and Eggs Produced by Type, and Forced Molt, 30 Selected States, November-December, 2002-03 ¹

Item	Unit	2002 ²	2003	2003 as % of 2002
Layers During Nov	1,000			
All Layers		316,216	313,497	99
Table Egg Type		263,703	260,798	99
Hatching Egg Type		52,513	52,699	100
Broiler-Type Hatching		50,023	50,298	101
Egg-Type Hatching		2,490	2,401	96
Eggs per 100 Layers During Nov	1,000			
All Layers		2,137	2,164	101
Table Egg Type		2,206	2,241	102
Hatching Egg Type		1,792	1,786	100
Broiler-Type Hatching		1,767	1,763	100
Egg-Type Hatching		2,289	2,249	98
Eggs Produced During Nov	Million			
All Layers		6,758	6,785	100
Table Egg Type		5,816	5,844	100
Hatching Egg Type		941	941	100
Broiler-Type Hatching		884	887	100
Egg-Type Hatching		57	54	95
Layers on Dec 1	1,000			
All Layers		315,511	315,026	100
Table Egg Type		263,430	262,207	100
Hatching Egg Type		52,081	52,819	101
Broiler-Type Hatching		49,583	50,414	102
Egg-Type Hatching		2,498	2,405	96
Eggs per 100 Layers on Dec 1	Number			
All Layers		71.2	72.3	102
Table Egg Type		73.6	75.1	102
Hatching Egg Type		59.4	58.9	99
Broiler-Type Hatching		58.6	58.1	99
Egg-Type Hatching		76.0	76.0	100
Forced Molt Layers, Dec 1	Percent			
Percent Being Molted		2.8	2.5	89
Percent with Molt Completed		23.7	22.5	95
Layers Sold for Slaughter During Nov	1,000	14,388	12,035	84
Layers Rendered, Died, Destroyed, Composted or Disappeared For Any Reason During Nov	1,000	3,845	4,558	119
Pullets Less Than 20 Weeks of Age, Dec 1	1,000	87,677	91,170	104
Pullets Added During Nov ³	1,000	20,142	19,472	97

¹ The 30 States are listed in the table on page 8.

² Revised.

³ Pullet chicks one day old added to pullet flocks.

**Layers and Eggs: Layers on Hand and Eggs Produced by State
and United States, During October 2002-03**

State	Table Egg Layers in Flocks 30,000 and Above		All Layers ¹		Eggs per 100 for All Layers ¹	
	2002	2003	2002	2003	2002	2003
	<i>1,000</i>	<i>1,000</i>	<i>1,000</i>	<i>1,000</i>	<i>Number</i>	<i>Number</i>
AL	2,305	2,084	9,816	9,436	1,925	1,939
AR	4,699	4,293	14,667	14,778	1,868	1,929
CA	23,021	19,088	23,664	19,622	2,214	2,263
CO	3,343	3,347	3,829	3,790	2,350	2,401
CT	3,016	2,805	3,072	2,869	2,279	2,266
FL	10,172	10,393	10,826	10,926	2,189	2,252
GA	10,979	11,138	20,330	20,200	2,105	2,139
HI	488	464	537	500	1,825	1,980
IL	3,153	3,545	3,391	3,762	2,300	2,286
IN	22,519	21,702	23,242	22,396	2,298	2,259
IA	37,063	38,572	37,876	39,344	2,292	2,369
ME	4,276	4,139	4,328	4,184	2,033	2,414
MD	3,003	2,676	3,201	2,821	2,437	2,446
MI	6,338	6,168	6,589	6,419	2,277	2,368
MN	10,747	10,285	11,467	10,880	2,259	2,206
MS	1,814	1,851	6,714	6,760	1,996	1,982
MO	5,550	5,297	6,939	6,713	2,291	2,383
NE	11,556	11,698	11,656	11,798	2,248	2,297
NY	3,791	3,485	4,024	3,729	2,361	2,414
NC	3,368	3,416	10,725	10,576	1,977	1,995
OH	30,174	28,479	30,647	28,969	2,144	2,171
OK	2,022	1,943	4,091	4,046	1,920	1,928
OR	2,689	2,835	2,856	3,027	2,311	2,346
PA	22,444	22,709	23,727	24,009	2,348	2,303
SC	4,272	4,252	5,308	5,408	2,261	2,219
SD	2,138	3,154	2,338	3,354	1,967	2,266
TX	14,252	14,196	18,651	18,454	2,214	2,146
VA	1,297	1,139	2,902	2,990	2,068	1,973
WA	5,059	4,802	5,129	4,872	2,125	2,258
WI	3,608	3,703	4,201	4,212	2,190	2,327
30 Sts	259,156	253,658	316,743	310,844	2,190	2,219
Oth Sts ²	15,700	16,588	21,416	22,307	2,213	2,206
US	274,856	270,246	338,159	333,151	2,192	2,218

¹ Includes all layers and eggs produced in both table egg and hatching egg flocks regardless of size.

² Estimates for individual States are not available.

**Layers and Eggs: Layers on Hand and Eggs Produced by State
and United States, During November 2002-03**

State	Table Egg Layers in Flocks 30,000 and Above		All Layers ¹		Eggs per 100 for All Layers ¹	
	2002	2003	2002	2003	2002	2003
	<i>1,000</i>	<i>1,000</i>	<i>1,000</i>	<i>1,000</i>	<i>Number</i>	<i>Number</i>
AL	2,316	2,081	9,692	9,364	1,826	1,901
AR	4,758	4,341	14,645	14,637	1,857	1,886
CA	22,446	19,550	23,059	20,119	2,190	2,217
CO	3,468	3,595	3,980	4,010	2,261	2,344
CT	3,010	2,833	3,062	2,897	2,253	2,313
FL	10,155	10,473	10,806	11,019	2,165	2,223
GA	10,825	11,416	20,122	20,499	2,092	2,059
HI	489	465	534	499	1,835	1,924
IL	3,240	3,592	3,480	3,804	2,356	2,234
IN	22,479	22,162	23,189	22,839	2,191	2,220
IA	37,203	39,352	37,961	40,128	2,221	2,295
ME	4,169	4,109	4,220	4,160	1,777	2,260
MD	3,086	2,675	3,285	2,820	2,405	2,376
MI	6,447	6,258	6,698	6,509	2,239	2,289
MN	10,770	10,338	11,422	10,931	2,162	2,132
MS	1,848	1,976	6,726	6,901	1,933	1,913
MO	5,330	5,217	6,746	6,621	2,268	2,220
NE	11,454	11,702	11,554	11,802	2,138	2,220
NY	3,591	3,473	3,831	3,725	2,375	2,362
NC	3,495	3,413	10,768	10,732	1,922	1,910
OH	30,151	28,749	30,645	29,238	2,105	2,151
OK	2,023	1,951	4,138	4,103	1,861	1,852
OR	2,637	2,786	2,801	2,975	2,356	2,286
PA	22,699	22,361	24,042	23,716	2,275	2,239
SC	4,263	4,188	5,255	5,402	2,150	2,184
SD	2,144	3,152	2,344	3,352	1,877	2,178
TX	14,391	14,175	18,707	18,409	2,160	2,129
VA	1,276	1,232	3,035	3,097	2,043	1,937
WA	5,084	4,821	5,157	4,891	2,191	2,269
WI	3,760	3,783	4,312	4,298	2,250	2,303
30 Sts	259,007	256,219	316,216	313,497	2,137	2,164
Oth Sts ²	15,972	16,788	21,592	22,555	2,167	2,172
US	274,979	273,007	337,808	336,052	2,139	2,165

¹ Includes all layers and eggs produced in both table egg and hatching egg flocks regardless of size.

² Estimates for individual States are not available.

**Egg Production: By Type, State, and United States,
October 2002-03**

State	Total Production		Table Eggs ¹		Hatching Eggs ¹	
	2002	2003	2002	2003	2002	2003
	<i>Million Eggs</i>	<i>Million Eggs</i>	<i>Million Eggs</i>	<i>Million Eggs</i>	<i>Million Eggs</i>	<i>Million Eggs</i>
AL	189	183	52	48	137	135
AR	274	285	103	97	171	188
CA	524	444				
CO	90	91				
CT	70	65				
FL	237	246	226	237	11	9
GA	428	432	249	259	179	173
HI	9.8	9.9	9.8	9.9	0	0
IL	78	86	74	83	4	3
IN	534	506	521	493	13	13
IA	868	932				
ME	88	101				
MD	78	69	75	67	3	2
MI	150	152				
MN	259	240	250	232	9	8
MS	134	134	42	44	92	90
MO	159	160				
NE	262	271	262	271	0	0
NY	95	90				
NC	212	211	81	83	131	128
OH	657	629				
OK	79	78	47	45	32	33
OR	66	71	65	69	1	2
PA	557	553	543	539	14	14
SC	120	120	101	101	19	19
SD	46	76	46	76	0	0
TX	413	396				
VA	60	59	31	27	29	32
WA	109	110				
WI	92	98				
30 Sts	6,938	6,898	5,957	5,924	981	974
Oth Sts ²	474	492	388	409	86	83
US	7,412	7,390	6,345	6,333	1,067	1,057

¹ Data by type of flock not shown for some States to avoid disclosing individual operations.

² Estimates for individual States are not available.

**Egg Production: By Type, State, and United States,
November 2002-03**

State	Total Production		Table Eggs ¹		Hatching Eggs ¹	
	2002	2003	2002	2003	2002	2003
	<i>Million Eggs</i>	<i>Million Eggs</i>	<i>Million Eggs</i>	<i>Million Eggs</i>	<i>Million Eggs</i>	<i>Million Eggs</i>
AL	177	178	52	48	125	130
AR	272	276	105	97	167	179
CA	505	446				
CO	90	94				
CT	69	67				
FL	234	245	223	236	11	9
GA	421	422	248	256	173	166
HI	9.8	9.6	9.8	9.6	0	0
IL	82	85	79	82	3	3
IN	508	507	495	495	13	12
IA	843	921				
ME	75	94				
MD	79	67	76	65	3	2
MI	150	149				
MN	247	233	238	225	9	8
MS	130	132	43	44	87	88
MO	153	147				
NE	247	262	247	262	0	0
NY	91	88				
NC	207	205	81	79	126	126
OH	645	629				
OK	77	76	46	44	31	32
OR	66	68	65	66	1	2
PA	547	531	532	517	15	14
SC	113	118	96	99	17	19
SD	44	73	44	73	0	0
TX	404	392				
VA	62	60	31	27	31	33
WA	113	111				
WI	97	99				
30 Sts	6,758	6,785	5,816	5,844	941	941
Oth Sts ²	468	490	388	407	79	83
US	7,226	7,275	6,204	6,251	1,020	1,024

¹ Data by type of flock not shown for some States to avoid disclosing individual operations.

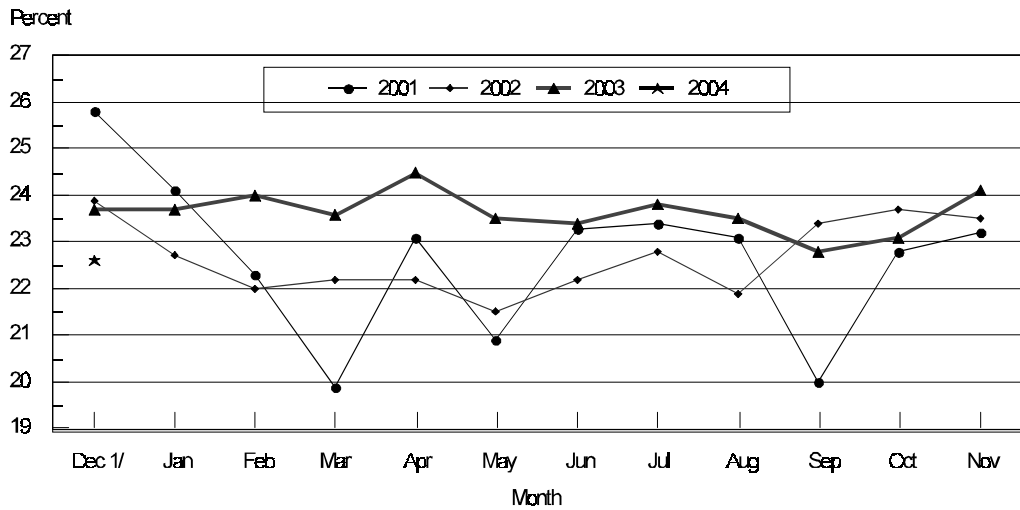
² Estimates for individual States are not available.

**Forced Molt: Percent of All Layers by Month,
United States, 2002-03¹**

Month	Percent Being Molted		Percent with Molt Completed	
	2002	2003	2002	2003
	<i>Percent</i>	<i>Percent</i>	<i>Percent</i>	<i>Percent</i>
Jan	4.1	4.4	22.7	23.7
Feb	4.6	4.5	22.0	23.9
Mar	3.7	3.3	22.2	23.6
Apr	3.6	2.2	22.2	24.5
May	5.7	4.3	21.5	23.5
Jun	4.2	4.2	22.2	23.4
Jul	3.7	4.3	22.8	23.8
Aug	4.6	4.1	21.9	23.4
Sep	4.2	3.9	23.4	22.8
Oct	4.6	5.1	23.7	23.1
Nov	3.8	3.4	23.5	24.1
Dec	2.7	2.5	23.7	22.6

¹ As of first of month.

**All Layers: United States
Percent Molt Completed, 2000 - 2003
First of Month**



1/ Previous year

**Forced Molt: Percent of All Layers by State
and United States, December 2002-03¹**

State	Percent Being Molted		Percent with Molt Completed	
	2002	2003	2002	2003
	<i>Percent</i>	<i>Percent</i>	<i>Percent</i>	<i>Percent</i>
AL	0.0	0.5	13.5	7.0
AR	0.0	0.0	11.5	11.0
CA	4.0	2.0	33.0	35.5
CO	12.0	0.0	26.0	20.5
CT	0.0	0.0	0.5	14.0
FL	3.0	2.0	36.0	27.0
GA	1.5	0.5	17.0	17.5
HI	7.0	7.5	47.5	49.0
IL	0.0	3.0	18.0	32.0
IN	2.5	2.0	31.0	32.0
IA	3.5	2.0	32.0	28.0
ME	0.0	0.0	2.0	0.0
MD	0.0	0.0	51.0	25.5
MI	0.5	5.0	26.5	33.5
MN	5.5	3.5	28.5	26.0
MS	0.0	0.0	13.0	12.0
MO	2.0	2.0	21.0	12.0
NE	7.0	6.5	23.0	22.5
NY	0.0	0.0	10.5	4.0
NC	1.0	0.0	12.5	10.5
OH	6.0	5.5	21.5	22.0
OK	0.0	0.0	14.0	8.0
OR	4.5	2.5	27.5	24.5
PA	3.0	3.0	17.5	23.5
SC	5.0	0.0	30.5	21.0
SD	7.5	9.5	32.0	21.0
TX	0.0	5.5	15.5	17.5
VA	0.0	0.5	20.0	7.0
WA	3.0	3.0	48.5	45.0
WI	0.0	2.5	39.5	31.5
30 Sts	2.8	2.5	23.7	22.5
Oth Sts ²	1.2	2.2	23.3	24.9
US	2.7	2.5	23.7	22.6

¹ As of first of month.

² Estimates for individual States are not available.

**Hatchery Production: Eggs in Incubators, Chicks Hatched,
and Placements by Type, United States, November-December 2002-03**

Item	2002	2003	2003 as % of 2002
	<i>1,000</i>	<i>1,000</i>	<i>Percent</i>
Egg-Type			
Eggs in Incubators on Dec 1	29,123	33,321	114
Chicks Hatched During Nov	31,146	30,129	97
Chicks Hatched Jan thru Nov	389,347	381,971	98
Pullets Hatched During Nov for Intended Placements in Hatchery Supply Flocks	227	315	139
7-18 Month Earlier ¹	3,010	2,930	97
Broiler-Type			
Eggs in Incubators on Dec 1	619,589	636,411	103
Chicks Hatched During Nov	690,052	707,619	103
Chicks Hatched Jan thru Nov	8,325,125	8,299,056	100
Pullets Hatched During Nov for Intended Placements in Hatchery Supply Flocks	6,938	6,946	100
7-15 Months Earlier ²	61,811	59,780	97

¹ 2003 includes pullet chicks hatched May 2002 through Apr 2003.

² 2003 includes pullet chicks hatched Aug 2002 through Apr 2003.

**Egg-Type Eggs in Incubators: By Region and United States,
December 1, 2002-03**

Geographic Division	2002	2003	2003 as % of 2002
	<i>1,000</i>	<i>1,000</i>	<i>Percent</i>
North Atlantic	4,513	5,249	116
E North Central	5,479	7,763	142
W North Central	6,133	8,173	133
South Atlantic	3,337	2,152	64
South Central	5,045	5,314	105
West	4,616	4,670	101
US	29,123	33,321	114

Regional Listing:

North Atlantic = CT, ME, MA, NH, NJ, NY, PA, RI, VT.

E North Central = IL, IN, MI, OH, WI.

W North Central = IA, KS, MN, MO, NE, ND, SD.

South Atlantic = DE, FL, GA, MD, NC, SC, VA, WV.

South Central = AL, AR, KY, LA, MS, OK, TN, TX.

West = AK, AZ, CA, CO, HI, ID, MT, NM, NV, OR, UT, WA, WY.

**Egg-Type Chicks Hatched: By State and United States,
November 2002-03**

State	November			Jan-Nov		
	2002	2003	2003 as % of 2002	2002	2003	2003 as % of 2002
	<i>1,000</i>	<i>1,000</i>	<i>Percent</i>	<i>1,000</i>	<i>1,000</i>	<i>Percent</i>
AR	967	943	98	8,955	9,247	103
FL	647	688	106	6,387	7,386	116
GA	1,855	1,728	93	23,605	25,708	109
IN	4,277	4,023	94	53,495	53,154	99
IA	4,630	4,989	108	57,959	64,606	111
MN	1,616	1,110	69	16,093	13,937	87
PA	3,544	3,873	109	46,957	48,800	104
Oth Sts ¹	13,610	12,775	94	175,896	159,133	90
US	31,146	30,129	97	389,347	381,971	98

¹ Not published separately to avoid disclosing data for individual operations.

Egg-Type Chicks Hatched: By Month, United States, 2001-03

Month	By Months				Cumulative			
	2001	2002	2003	2003 as % of 2002	2001	2002	2003	2003 as % of 2002
	<i>1,000</i>	<i>1,000</i>	<i>1,000</i>	<i>Percent</i>	<i>1,000</i>	<i>1,000</i>	<i>1,000</i>	<i>Percent</i>
Jan	36,728	35,647	33,499	94	36,728	35,647	33,499	94
Feb	37,836	34,465	29,988	87	74,564	70,112	63,487	91
Mar	41,015	36,977	36,726	99	115,579	107,089	100,213	94
Apr	42,789	38,088	37,531	99	158,368	145,177	137,744	95
May	42,655	38,751	38,206	99	201,023	183,928	175,950	96
Jun	40,822	35,136	36,344	103	241,845	219,064	212,294	97
Jul	38,651	35,573	35,593	100	280,496	254,637	247,887	97
Aug	34,987	35,681	33,179	93	315,483	290,318	281,066	97
Sep	37,140	35,734	35,777	100	352,623	326,052	316,843	97
Oct	35,825	32,149	34,999	109	388,448	358,201	351,842	98
Nov	32,355	31,146	30,129	97	420,803	389,347	381,971	98
Dec	31,870	31,973			452,673	421,320		

**Intended Placements: Egg-Type Pullet Chicks for Hatchery Supply
Flocks by Month and Total, United States, 2001-03¹**

Month	Pullet Chicks Hatched			2003 as % of 2002	Cumulative Potential Placements Relative to Current Supply Flocks 7-18 Months Earlier ²		
	2001	2002	2003		2002	2003	2004
	<i>1,000</i>	<i>1,000</i>	<i>1,000</i>	<i>Percent</i>	<i>1,000</i>	<i>1,000</i>	<i>1,000</i>
Jan	236	228	198	87	3,158	2,974	2,974
Feb	214	247	221	89	3,205	2,916	2,918
Mar	284	237	315	133	3,239	2,886	2,881
Apr	311	295	276	94	3,225	2,944	2,873
May	315	319	279	87	3,134	2,980	2,993
Jun	261	221	305	138	3,087	2,946	3,081
Jul	340	282	226	80	3,048	2,927	
Aug	251	221	184	83	3,040	2,897	
Sep	219	277	269	97	3,073	2,871	
Oct	150	186	306	165	3,026	2,949	
Nov	261	227	315	139	3,010	2,930	
Dec	206	187			3,014	2,890	
Total	3,048	2,927					

¹ Reported by leading breeders. Coverage may not be 100 percent. Includes expected pullet chicks from eggs sold during the preceding month at the rate of 125 pullet chicks per 30 dozen case of eggs.

² For November 2003, includes breeder pullet chicks hatched May 2002 through Apr 2003. The 7-18 months represent the first laying cycle. Molting and additional laying cycles will increase the cumulative potential placements.

**Broiler-Type Eggs in Incubators: By Region
and United States, December 1, 2002-03**

Geographic Division	2002	2003	2003 as % of 2002
	<i>1,000</i>	<i>1,000</i>	<i>Percent</i>
North Atlantic	11,458	12,315	107
E North Central	7,345	8,206	112
W North Central	19,256	22,510	117
South Atlantic	229,289	229,778	100
South Central	328,671	338,851	103
West	23,570	24,751	105
US	619,589	636,411	103

**Broiler-Type Chicks Hatched: By State
and United States, November 2002-03**

State	November			Jan-Nov		
	2002	2003	2003 as % of 2002	2002	2003	2003 as % of 2002
	<i>1,000</i>	<i>1,000</i>	<i>Percent</i>	<i>1,000</i>	<i>1,000</i>	<i>Percent</i>
AL	93,835	96,042	102	1,143,588	1,126,229	98
AR	96,547	102,438	106	1,178,751	1,197,061	102
DE	11,849	12,511	106	137,244	143,001	104
FL	7,999	4,781	60	91,156	57,319	63
GA	100,472	106,252	106	1,226,767	1,247,372	102
KY	20,732	21,814	105	255,973	261,763	102
LA	12,122	13,529	112	146,621	150,290	103
MD	32,905	29,950	91	378,523	367,529	97
MS	61,013	62,361	102	744,094	755,168	101
NC	60,877	61,682	101	729,445	708,451	97
OK	20,512	21,616	105	249,527	251,450	101
PA	11,345	11,593	102	141,143	137,415	97
SC	15,550	14,162	91	180,987	178,289	99
TX	50,197	48,962	98	597,674	579,119	97
VA	20,816	22,501	108	251,471	257,241	102
CA, MO, TN, & WV	52,747	56,622	107	637,112	647,317	102
19 Sts ¹	669,518	686,816	103	8,090,076	8,065,014	100
Oth Sts ²	20,534	20,803	101	235,049	234,042	100
US	690,052	707,619	103	8,325,125	8,299,056	100

¹ States in the weekly hatchery production estimating program.

² Not published separately to avoid disclosing data for individual operations.

Broiler-Type Chicks Hatched: By Month, United States, 2001-03

Month	By Months				Cumulative			
	2001	2002	2003	2003 as % of 2002	2001	2002	2003	2003 as % of 2002
	<i>1,000</i>	<i>1,000</i>	<i>1,000</i>	<i>Percent</i>	<i>1,000</i>	<i>1,000</i>	<i>1,000</i>	<i>Percent</i>
Jan	745,939	776,961	759,773	98	745,939	776,961	759,773	98
Feb	683,255	703,323	694,590	99	1,429,194	1,480,284	1,454,363	98
Mar	778,760	791,093	774,836	98	2,207,954	2,271,377	2,229,199	98
Apr	755,455	765,415	761,145	99	2,963,409	3,036,792	2,990,344	98
May	785,704	799,262	791,905	99	3,749,113	3,836,054	3,782,249	99
Jun	766,534	776,332	774,680	100	4,515,647	4,612,386	4,556,929	99
Jul	769,448	781,707	777,341	99	5,285,095	5,394,093	5,334,270	99
Aug	771,550	780,020	783,175	100	6,056,645	6,174,113	6,117,445	99
Sep	738,379	740,396	739,191	100	6,795,024	6,914,509	6,856,636	99
Oct	748,274	720,564	734,801	102	7,543,298	7,635,073	7,591,437	99
Nov	703,365	690,052	707,619	103	8,246,663	8,325,125	8,299,056	100
Dec	774,453	753,875			9,021,116	9,079,000		

**Intended Placements: Broiler-Type Pullet Chicks for Hatchery
Supply Flocks by Month and Total, 2001-03¹**

Month	Pullet Chicks Hatched			2003 as % of 2002	Cumulative Potential Placements Relative to Current Supply Flocks 7-15 Months Earlier ²		
	2001	2002	2003		2002	2003	2004
	<i>1,000</i>	<i>1,000</i>	<i>1,000</i>	<i>Percent</i>	<i>1,000</i>	<i>1,000</i>	<i>1,000</i>
US Place- ments							
Jan	6,685	6,264	6,269	100	60,750	62,473	60,015
Feb	6,748	7,275	6,659	92	60,382	62,371	60,821
Mar	6,752	6,775	6,329	93	60,771	62,559	61,284
Apr	6,398	6,814	6,720	99	60,989	62,658	61,463
May	7,117	7,597	7,612	100	61,008	62,659	61,679
Jun	6,822	7,206	6,748	94	61,521	62,322	61,966
Jul	6,326	6,602	7,071	107	61,346	62,022	
Aug	7,494	7,449	7,401	99	61,212	61,477	
Sep	6,647	6,676	6,654	100	61,370	60,539	
Oct	6,704	6,265	6,485	104	61,323	59,662	
Nov	7,261	6,938	6,946	100	61,811	59,780	
Dec	6,577	6,475			61,914	59,943	
Annual Total	81,531	82,336					
Total Place- ments ³							
Jan	7,615	7,415	7,388	100			
Feb	8,275	8,491	8,094	95			
Mar	8,325	7,997	7,391	92			
Apr	7,915	8,119	8,000	99			
May	8,647	8,982	8,920	99			
Jun	8,220	8,802	8,341	95			
Jul	7,687	8,083	8,555	106			
Aug	9,133	8,913	8,756	98			
Sep	8,047	8,002	8,338	104			
Oct	7,848	7,438	7,856	106			
Nov	9,017	8,202	8,246	101			
Dec	8,119	8,016					
Annual Total	98,848	98,460					

¹ Reported by leading breeders. Coverage may not be 100 percent. Includes expected pullet chicks from eggs sold during the preceding month at the rate of 125 pullet chicks per 30 dozen case of eggs.

² For Nov 2003, includes breeder pullet chicks hatched Aug 2002 through Apr 2003.

³ U.S. production of intended placements worldwide.

Procedures and Reliability

Data Sources: Primary data for the "**Chickens and Eggs**" report are from weekly and/or monthly questionnaires sent to producers. An attempt is made to collect information for layer and egg estimates from each known contractor and independent producer who has over 30,000 table egg layers. Coverage for operations with less than 30,000 table egg layers are estimated each month based on data reported in December. Approximately 900 contractors, independent egg producers, and started pullet operations are contacted each month. All known hatcheries, approximately 330, are contacted for information on a weekly and/or monthly basis.

Revisions: The previous month's estimates are subject to revision if late reports or corrected data indicates a different level. Additionally, revisions needed after the monthly report will be made at the end of the marketing year and published in the annual summaries of "**Chickens and Eggs Summary**" and "**Hatchery Production**".

Procedures and Reliability: Operations are mailed a questionnaire and given adequate time to respond by mail. Those that do not respond are phoned. Great care is exercised to ensure that all operations are accounted for during each survey period. However, there are usually missing reports that must be accounted for in the estimates.

Sound statistical methodology is employed to derive estimates from the reported data. All data are checked for unusual values. All operations' data are compared to their own past operating profiles and also to trends from other operations. Data for missing operations are estimated based on similar operations or historical data. Survey data are subject to non-sampling errors such as omissions and mistakes in reporting and in processing. While these errors cannot be measured directly, they are minimized by reviewing all data for consistency and reasonableness.

Egg-type chicks hatched are comprised of all chicks of egg-type domesticated breeds including males and chicks destined for hatchery supply flocks and research purposes. The relationship of chicks hatched to chicken inventory and poultry marketings is carefully monitored. The disposition of egg-type chicks hatched prior to placement into the laying flock can vary significantly, which can make comparisons to changes in layer inventory inconsistent over time.

Intended placement data reported by leading breeders include pullet chicks expected from eggs sold the preceding month. The breeders in this report account for a large percentage of replacement pullets for hatchery supply flocks. Production of replacement pullets by these breeders indicates the number of pullets available to hatchery supply flocks several months before the pullets will actually move into the flocks. "Hatchery Supply Flocks" include all generations of layers which could lay eggs to supply a hatchery. This includes the generations of parents, grandparents, great-grandparents, pedigree, etc. Also included are research flocks, vaccine flocks, and specific pathogen-free flocks. The broiler cumulative potential placements are a moving total of the intended placements 7-15 months earlier. The egg-type cumulative potential placements of 7-18 months represent the first laying cycle. Molting and additional laying cycles will increase the cumulative potential placements of egg-type hatching flocks.

The next "*Chickens and Eggs*" report will be released at 3 p.m. ET on January 30, 2004.

The United States Department of Agriculture (USDA) prohibits discrimination in all its programs on the basis of race, color, national origin, gender, religion, age, disability, political beliefs, sexual orientation, and marital or family status. (Not all prohibited bases apply to all programs.) Persons with disabilities who require alternative means for communication of program information (braille, large print, audiotape, etc.) should contact the USDA's TARGET Center at 202-720-2600 (voice and TDD).

To file a complaint of discrimination, write USDA, Director, Office of Civil Rights, Room 326-W, Whitten Building, 1400 Independence Avenue, SW, Washington, D.C., 20250-9410, or call 202-720-5964 (voice or TDD). USDA is an equal opportunity provider and employer.

ACCESS TO REPORTS!!

For your convenience, there are several ways to obtain NASS reports, data products, and services:

INTERNET ACCESS

All NASS reports are available free of charge on the worldwide Internet. For access, connect to the Internet and go to the NASS Home Page at: <http://www.usda.gov/nass/>. Select "Today's Reports" or Publications and then Reports Calendar or Publications and then Search, by Title or Subject.

E-MAIL SUBSCRIPTION

All NASS reports are available by subscription free of charge direct to your e-mail address. Starting with the NASS Home Page at <http://www.usda.gov/nass/>, click on **Publications**, then click on the **Subscribe by E-mail** button which takes you to the page describing e-mail delivery of reports. Finally, click on **Go to the Subscription Page** and follow the instructions.

PRINTED REPORTS OR DATA PRODUCTS

CALL OUR TOLL-FREE ORDER DESK: 800-999-6779 (U.S. and Canada)
Other areas, please call 703-605-6220 FAX: 703-605-6900
(Visa, MasterCard, check, or money order acceptable for payment.)

ASSISTANCE

For **assistance** with general agricultural statistics or further information about NASS or its products or services, contact the **Agricultural Statistics Hotline** at **800-727-9540**, 7:30 a.m. to 4:00 p.m. ET, or e-mail: nass@nass.usda.gov.
