

Chickens and Eggs

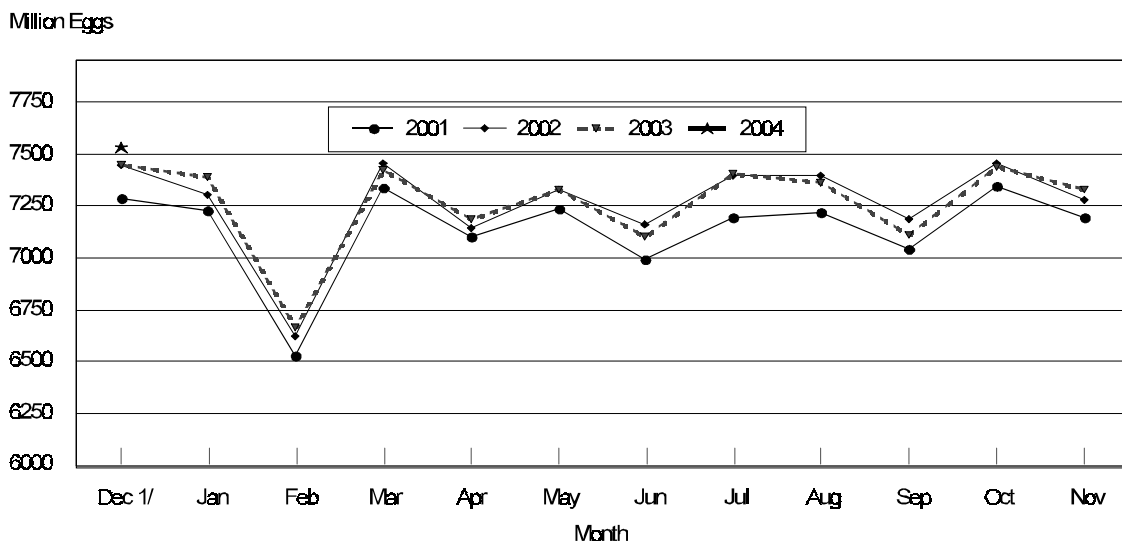
Released January 30, 2004, by the National Agricultural Statistics Service (NASS), Agricultural Statistics Board, U.S. Department of Agriculture. For information on "Chickens and Eggs" call Tom Kruchten at (202) 690-4870, for "Hatch" call Jody Roberts at (202) 690-8632, office hours 7:30 a.m. to 4:00 p.m. ET.

December Egg Production up 1 Percent

U.S. egg production totaled 7.53 billion during December 2003, up 1 percent from last year. Production included 6.48 billion table eggs, and 1.06 billion hatching eggs, of which 995 million were broiler-type and 61.0 million were egg-type. The total number of layers during December 2003 averaged 339 million, down 1 percent from a year earlier. December egg production per 100 layers was 2,225 eggs, up 2 percent from December 2002.

December 2003 contained 23 weekdays, 1 holiday, and 4 Saturdays, compared to December 2002 which contained 22 weekdays, 1 holiday, and 4 Saturdays.

All Egg Production By Months United States, 2001 - 2004



1/ Previous Year

All layers in the U.S. on January 1, 2004, totaled 337 million, down 1 percent from a year ago. The 337 million layers consisted of 280 million layers producing table or commercial type eggs, 55.0 million layers producing broiler-type hatching eggs, and 2.44 million layers producing egg-type hatching eggs. Rate of lay per day on January 1, 2004, averaged 71.0 eggs per 100 layers, up 2 percent from a year ago.

Laying flocks in the 30 major egg producing States produced 7.02 billion eggs during December 2003, up 1 percent from a year ago. The average number of layers during December, at 316 million, was down 1 percent from a year ago.

Individual State estimates are available for the 30 major egg producing States. These States are listed on page 8 of this release and account for approximately 94 percent of the total U.S. egg production. Production for the other States are grouped into an "Other States" category and combined with the 30 States published individually to obtain a U.S. estimate.

Special Note

Preliminary 2002 Census data were used in the review process for the revised 2002 and 2003 layer and egg estimates in this publication. The revised estimates may appear disjointed from historical data until the release of the 5 - year *Final Estimates* publications which are scheduled for April 29, 2004.

Egg-Type Chicks Hatched Up 6 Percent

Egg-type chicks hatched during December totaled 33.9 million, up 6 percent from December 2002. Eggs in incubators totaled 31.7 million on January 1, 2004, up 5 percent from a year ago.

Domestic placements of egg-type pullet chicks for future hatchery supply flocks by leading breeders totaled 242,000 during December 2003, up 29 percent from December 2002.

Broiler Hatch Up 3 Percent

The December 2003 hatch of broiler-type chicks, at 778 million, was up 3 percent from December of the previous year. There were 637 million eggs in incubators on January 1, 2004, up 2 percent from a year earlier.

Leading breeders placed 7.0 million broiler-type pullet chicks for future domestic hatchery supply flocks during December 2003, up 8 percent from December 2002.

**All Layers: Average Number on Hand During the Month,
United States, 2001-04**

Month	2001	2002	2003	2004
	<i>1,000 Layers</i>	<i>1,000 Layers</i>	<i>1,000 Layers</i>	<i>1,000 Layers</i>
Dec ¹	332,283	339,970	340,316	338,525
Jan	333,748	340,815	340,910	
Feb	335,763	339,857	340,575	
Mar	336,822	339,329	339,885	
Apr	337,141	338,647	338,182	
May	335,163	337,377	336,164	
Jun	332,928	337,133	334,789	
Jul	332,244	337,610	334,179	
Aug	332,808	338,119	334,332	
Sep	335,276	339,197	334,198	
Oct	337,593	340,111	335,333	
Nov	338,366	340,118	338,283	

¹ December preceding year.

**Eggs: Production During the Month by Type,
United States, 2003-04**

Month	Total Eggs		Table Eggs		Hatching Eggs	
	2003	2004	2003	2004	2003	2004
	<i>Million Eggs</i>	<i>Million Eggs</i>	<i>Million Eggs</i>	<i>Million Eggs</i>	<i>Million Eggs</i>	<i>Million Eggs</i>
Dec ¹	7,451	7,531	6,392	6,476	1,058	1,056
Jan	7,390		6,301		1,088	
Feb	6,665		5,673		991	
Mar	7,424		6,316		1,108	
Apr	7,187		6,103		1,084	
May	7,327		6,200		1,127	
Jun	7,105		6,028		1,077	
Jul	7,403		6,316		1,086	
Aug	7,367		6,296		1,070	
Sep	7,112		6,095		1,017	
Oct	7,439		6,381		1,058	
Nov	7,326		6,301		1,025	
During Year	87,196	7,531	74,402	6,476	12,789	1,056

¹ December preceding year.

**Layers and Eggs: Layers on Hand and Eggs Produced by Type,
and Forced Molt, United States, November-December 2002-03**

Item	Unit	2002	2003	2003 as % of 2002
Layers During Nov	1,000			
All Layers		340,118	338,283	99
Table Egg Type		283,090	280,904	99
Hatching Egg Type		57,028	57,379	101
Broiler-Type Hatching		54,447	54,861	101
Egg-Type Hatching		2,581	2,518	98
Eggs per 100 Layers During Nov	Number			
All Layers		2,139	2,166	101
Table Egg Type		2,209	2,243	102
Hatching Egg Type		1,790	1,786	100
Broiler-Type Hatching		1,769	1,764	100
Egg-Type Hatching		2,247	2,264	101
Eggs Produced During Nov	Million			
All Layers		7,276	7,326	101
Table Egg Type		6,253	6,301	101
Hatching Egg Type		1,021	1,025	100
Broiler-Type Hatching		963	968	101
Egg-Type Hatching		58	57	98
Layers on Dec 1	1,000			
All Layers		339,827	339,989	100
Table Egg Type		283,273	282,443	100
Hatching Egg Type		56,554	57,546	102
Broiler-Type Hatching		53,976	55,016	102
Egg-Type Hatching		2,578	2,530	98
Eggs per 100 Layers on Dec 1	Number			
All Layers		71.3	72.4	102
Table Egg Type		73.7	75.2	102
Hatching Egg Type		59.4	58.9	99
Broiler-Type Hatching		58.6	58.1	99
Egg-Type Hatching		74.3	75.8	102
Forced Molt Layers on Dec 1	Percent			
Percent Being Molted		2.7	2.5	93
Percent with Molt Completed		23.7	22.7	96
Layers Sold for Slaughter During Nov	1,000	15,226	14,043	92
Layers Rendered, Died, Destroyed, Composted or Disappeared For Any Reason During Nov	1,000	4,447	5,792	130
Pullets Less Than 20 Weeks of Age, Dec 1	1,000	96,325	100,321	104
Pullets Added During Nov ¹	1,000	22,328	23,157	104

¹ Pullet chicks one day old added to pullet flocks.

**Layers and Eggs: Layers on Hand and Eggs Produced by Type,
and Forced Molt, United States, December-January 2002-04**

Item	Unit	2002	2003	2003 as % of 2002
Layers During Dec	1,000			
All Layers		340,316	338,525	99
Table Egg Type		282,719	281,003	99
Hatching Egg Type		57,597	57,522	100
Broiler-Type Hatching		54,957	55,034	100
Egg-Type Hatching		2,640	2,488	94
Eggs per 100 Layers During Dec	Number			
All Layers		2,189	2,225	102
Table Egg Type		2,261	2,305	102
Hatching Egg Type		1,837	1,836	100
Broiler-Type Hatching		1,812	1,808	100
Egg-Type Hatching		2,348	2,452	104
Eggs Produced During Dec	Million			
All Layers		7,451	7,531	101
Table Egg Type		6,392	6,476	101
Hatching Egg Type		1,058	1,056	100
Broiler-Type Hatching		996	995	100
Egg-Type Hatching		62	61	98
		2003	2004	2004 as % of 2003
Layers on Jan 1	1,000			
All Layers		340,752	337,018	99
Table Egg Type		282,140	279,543	99
Hatching Egg Type		58,612	57,475	98
Broiler-Type Hatching		55,922	55,037	98
Egg-Type Hatching		2,690	2,438	91
Eggs per 100 Layers on Jan 1	Number			
All Layers		69.8	71.0	102
Table Egg Type		72.0	73.5	102
Hatching Egg Type		59.2	59.2	100
Broiler-Type Hatching		58.3	58.3	100
Egg-Type Hatching		77.5	80.1	103
Forced Molt Layers on Jan 1	Percent			
Percent Being Molted		4.4	3.9	89
Percent with Molt Completed		23.7	22.2	94
Layers Sold for Slaughter During Dec	1,000	14,560	15,476	106
Layers Rendered, Died, Destroyed, Composted or Disappeared For Any Reason During Dec		6,922	5,844	84
Pullets Less Than 20 Weeks of Age, Jan 1	1,000	94,620	100,441	106
Pullets Added During Dec ¹	1,000	22,938	23,580	103

¹ Pullet chicks one day old added to pullet flocks.

Layers and Eggs: Layers on Hand and Eggs Produced by Type, and Forced Molt, 30 Selected States, November-December, 2002-03 ¹

Item	Unit	2002	2003	2003 as % of 2002
Layers During Nov	1,000			
All Layers		318,474	315,729	99
Table Egg Type		265,961	262,978	99
Hatching Egg Type		52,513	52,751	100
Broiler-Type Hatching		50,023	50,333	101
Egg-Type Hatching		2,490	2,418	97
Eggs per 100 Layers During Nov	Number			
All Layers		2,137	2,165	101
Table Egg Type		2,205	2,241	102
Hatching Egg Type		1,792	1,786	100
Broiler-Type Hatching		1,767	1,762	100
Egg-Type Hatching		2,289	2,275	99
Eggs Produced During Nov	Million			
All Layers		6,807	6,835	100
Table Egg Type		5,865	5,893	100
Hatching Egg Type		941	942	100
Broiler-Type Hatching		884	887	100
Egg-Type Hatching		57	55	96
Layers on Dec 1	1,000			
All Layers		318,121	317,290	100
Table Egg Type		266,040	264,386	99
Hatching Egg Type		52,081	52,904	102
Broiler-Type Hatching		49,583	50,481	102
Egg-Type Hatching		2,498	2,423	97
Eggs per 100 Layers on Dec 1	Number			
All Layers		71.3	72.4	102
Table Egg Type		73.6	75.1	102
Hatching Egg Type		59.4	58.9	99
Broiler-Type Hatching		58.6	58.1	99
Egg-Type Hatching		76.0	76.0	100
Forced Molt Layers on Dec 1	Percent			
Percent Being Molted		2.8	2.5	89
Percent with Molt Completed		23.7	22.5	95
Layers Sold for Slaughter During Nov	1,000	14,490	13,092	90
Layers Rendered, Died, Destroyed, Composted or Disappeared For Any Reason During Nov	1,000	4,241	5,549	131
Pullets Less Than 20 Weeks of Age, Dec 1	1,000	89,931	93,174	104
Pullets Added During Nov ²	1,000	21,591	21,828	101

¹ The 30 States are listed in the table on page 8.

² Pullet chicks one day old added to pullet flocks.

**Layers and Eggs: Layers on Hand and Eggs Produced by Type,
and Forced Molt, 30 Selected States, December-January 2002-04 ¹**

Item	Unit	2002	2003	2003 as % of 2002
Layers During Dec	1,000			
All Layers		318,278	315,723	99
Table Egg Type		265,369	262,904	99
Hatching Egg Type		52,909	52,819	100
Broiler-Type Hatching		50,348	50,447	100
Egg-Type Hatching		2,561	2,372	93
Eggs per 100 Layers During Dec	Number			
All Layers		2,189	2,224	102
Table Egg Type		2,258	2,301	102
Hatching Egg Type		1,839	1,838	100
Broiler-Type Hatching		1,811	1,810	100
Egg-Type Hatching		2,382	2,445	103
Eggs Produced During Dec	Million			
All Layers		6,966	7,021	101
Table Egg Type		5,993	6,050	101
Hatching Egg Type		973	971	100
Broiler-Type Hatching		912	913	100
Egg-Type Hatching		61	58	95
		2003	2004	2004 as % of 2003
Layers on Jan 1	1,000			
All Layers		318,394	314,123	99
Table Egg Type		264,679	261,408	99
Hatching Egg Type		53,715	52,715	98
Broiler-Type Hatching		51,102	50,401	99
Egg-Type Hatching		2,613	2,314	89
Eggs per 100 Layers on Jan 1	Number			
All Layers		69.9	71.0	102
Table Egg Type		72.1	73.3	102
Hatching Egg Type		59.3	59.3	100
Broiler-Type Hatching		58.4	58.4	100
Egg-Type Hatching		77.6	80.4	104
Forced Molt Layers on Jan 1	Percent			
Percent Being Molted		4.3	4.0	93
Percent with Molt Completed		23.7	22.0	93
Layers Sold for Slaughter During Dec	1,000	13,833	14,601	106
Layers Rendered, Died, Destroyed, Composted or Disappeared For Any Reason During Dec	1,000	6,591	5,560	84
Pullets Less Than 20 Weeks of Age, Jan 1	1,000	87,796	93,188	106
Pullets Added During Dec ²	1,000	21,820	22,206	102

¹ The 30 States are listed in the table on page 8.

² Pullet chicks one day old added to pullet flocks.

**Layers and Eggs: Layers on Hand and Eggs Produced by State
and United States, During November 2002-03**

State	Table Egg Layers in Flocks 30,000 and Above		All Layers ¹		Eggs per 100 for All Layers ¹	
	2002	2003	2002	2003	2002	2003
	<i>1,000</i>	<i>1,000</i>	<i>1,000</i>	<i>1,000</i>	<i>Number</i>	<i>Number</i>
AL	2,316	2,081	9,692	9,364	1,826	1,901
AR	4,758	4,341	14,645	14,637	1,857	1,886
CA	23,107	20,152	23,720	20,721	2,188	2,220
CO	3,468	3,595	3,980	4,010	2,261	2,344
CT	3,010	2,833	3,062	2,892	2,253	2,317
FL	10,155	10,473	10,806	11,009	2,165	2,225
GA	11,080	11,416	20,377	20,499	2,095	2,059
HI	489	465	534	499	1,835	1,924
IL	3,240	3,592	3,480	3,804	2,356	2,234
IN	22,479	22,162	23,189	22,880	2,191	2,220
IA	37,953	40,127	38,711	40,878	2,222	2,295
ME	4,169	4,109	4,220	4,158	1,777	2,261
MD	3,194	2,782	3,393	2,927	2,387	2,392
MI	6,897	6,708	7,148	6,959	2,238	2,285
MN	10,770	10,493	11,422	11,074	2,162	2,131
MS	1,848	1,876	6,726	6,801	1,933	1,911
MO	5,330	5,252	6,746	6,614	2,268	2,238
NE	11,488	11,702	11,588	11,790	2,132	2,214
NY	3,591	3,399	3,831	3,722	2,375	2,337
NC	3,495	3,425	10,768	10,769	1,922	1,913
OH	30,151	28,749	30,645	29,238	2,105	2,151
OK	2,023	1,951	4,138	4,103	1,861	1,852
OR	2,637	2,790	2,801	2,971	2,356	2,289
PA	22,699	22,191	24,042	23,946	2,275	2,238
SC	4,263	4,188	5,255	5,402	2,150	2,184
SD	2,144	3,152	2,344	3,352	1,877	2,178
TX	14,391	14,175	18,707	18,409	2,160	2,129
VA	1,276	1,232	3,035	3,101	2,043	1,935
WA	5,084	4,821	5,157	4,886	2,191	2,251
WI	3,760	3,796	4,312	4,314	2,250	2,295
30 Sts	261,265	258,028	318,474	315,729	2,137	2,165
Oth Sts ²	15,972	16,793	21,644	22,554	2,167	2,177
US	277,237	274,821	340,118	338,283	2,139	2,166

¹ Includes all layers and eggs produced in both table egg and hatching egg flocks regardless of size.

² Estimates for individual States are not available.

**Layers and Eggs: Layers on Hand and Eggs Produced by State
and United States, During December 2002-03**

State	Table Egg Layers in Flocks 30,000 and Above		All Layers ¹		Eggs per 100 for All Layers ¹	
	2002	2003	2002	2003	2002	2003
	<i>1,000</i>	<i>1,000</i>	<i>1,000</i>	<i>1,000</i>	<i>Number</i>	<i>Number</i>
AL	2,350	2,067	9,778	9,418	1,872	1,932
AR	4,745	4,263	14,541	14,522	1,926	1,914
CA	22,398	20,370	23,016	20,899	2,260	2,244
CO	3,488	3,747	3,990	4,223	2,306	2,415
CT	3,015	2,910	3,069	2,962	2,476	2,465
FL	9,929	10,470	10,534	10,989	2,174	2,321
GA	11,285	11,531	20,515	20,672	2,157	2,095
HI	491	447	532	482	1,880	2,012
IL	3,181	3,593	3,411	3,805	2,433	2,181
IN	22,378	22,686	23,035	23,427	2,236	2,275
IA	37,577	40,250	38,290	40,931	2,279	2,293
ME	4,224	4,090	4,276	4,135	1,707	2,322
MD	3,112	2,890	3,346	3,011	2,430	2,435
MI	6,992	7,038	7,243	7,289	2,237	2,264
MN	10,870	10,410	11,473	10,991	2,162	2,241
MS	1,845	1,887	6,715	6,751	2,010	1,955
MO	5,376	5,300	6,858	6,575	2,304	2,236
NE	11,508	11,668	11,608	11,743	2,160	2,282
NY	3,390	3,379	3,648	3,764	2,495	2,471
NC	3,401	3,416	10,742	10,812	2,020	2,005
OH	30,152	27,837	30,663	28,276	2,182	2,309
OK	2,019	1,925	4,269	4,111	1,921	1,922
OR	2,679	2,743	2,857	2,911	2,345	2,370
PA	23,242	21,743	24,854	23,504	2,338	2,314
SC	4,232	4,124	5,284	5,343	2,101	2,265
SD	2,157	3,147	2,357	3,347	1,994	2,181
TX	14,390	14,185	18,761	18,398	2,159	2,238
VA	1,324	1,320	3,268	3,205	2,020	1,934
WA	5,007	4,879	5,084	4,943	2,262	2,266
WI	3,752	3,762	4,261	4,284	2,394	2,381
30 Sts	260,509	258,077	318,278	315,723	2,189	2,224
Oth Sts ²	16,211	16,955	22,038	22,802	2,201	2,237
US	276,720	275,032	340,316	338,525	2,189	2,225

¹ Includes all layers and eggs produced in both table egg and hatching egg flocks regardless of size.

² Estimates for individual States are not available.

**Egg Production: By Type, State, and United States,
November 2002-03**

State	Total Production		Table Eggs ¹		Hatching Eggs ¹	
	2002	2003	2002	2003	2002	2003
	<i>Million Eggs</i>	<i>Million Eggs</i>	<i>Million Eggs</i>	<i>Million Eggs</i>	<i>Million Eggs</i>	<i>Million Eggs</i>
AL	177	178	52	48	125	130
AR	272	276	105	97	167	179
CA	519	460				
CO	90	94				
CT	69	67				
FL	234	245	223	236	11	9
GA	427	422	254	256	173	166
HI	9.8	9.6	9.8	9.6	0	0
IL	82	85	79	82	3	3
IN	508	508	495	496	13	12
IA	860	938				
ME	75	94				
MD	81	70	78	68	3	2
MI	160	159				
MN	247	236	238	228	9	8
MS	130	130	43	42	87	88
MO	153	148				
NE	247	261	247	261	0	0
NY	91	87				
NC	207	206	81	80	126	126
OH	645	629				
OK	77	76	46	44	31	32
OR	66	68	65	66	1	2
PA	547	536	532	522	15	14
SC	113	118	96	99	17	19
SD	44	73	44	73	0	0
TX	404	392				
VA	62	60	31	27	31	33
WA	113	110				
WI	97	99				
30 Sts	6,807	6,835	5,865	5,893	941	942
Oth Sts ²	469	491	388	408	80	83
US	7,276	7,326	6,253	6,301	1,021	1,025

¹ Data by type of flock not shown for some States to avoid disclosing individual operations.

² Estimates for individual States are not available.

**Egg Production: By Type, State, and United States,
December 2002-03**

State	Total Production		Table Eggs ¹		Hatching Eggs ¹	
	2002	2003	2002	2003	2002	2003
	<i>Million Eggs</i>	<i>Million Eggs</i>	<i>Million Eggs</i>	<i>Million Eggs</i>	<i>Million Eggs</i>	<i>Million Eggs</i>
AL	183	182	53	50	130	132
AR	280	278	108	100	172	178
CA	520	469				
CO	92	102				
CT	76	73				
FL	229	255	219	244	10	11
GA	443	433	270	263	173	170
HI	10.0	9.7	10.0	9.7	0	0
IL	83	83	80	80	3	3
IN	515	533	503	521	12	12
IA	873	939				
ME	73	96				
MD	82	73	79	71	3	2
MI	162	165				
MN	248	246	239	237	9	9
MS	135	132	45	42	90	90
MO	158	147				
NE	251	268	251	268	0	0
NY	91	93				
NC	217	217	84	84	133	133
OH	669	653				
OK	82	79	48	45	34	34
OR	67	69	65	67	2	2
PA	581	544	564	528	17	16
SC	111	121	93	101	18	20
SD	47	73	47	73	0	0
TX	405	412				
VA	66	62	32	28	34	34
WA	115	112				
WI	102	102				
30 Sts	6,966	7,021	5,993	6,050	973	971
Oth Sts ²	485	510	399	426	85	85
US	7,451	7,531	6,392	6,476	1,058	1,056

¹ Data by type of flock not shown for some States to avoid disclosing individual operations.

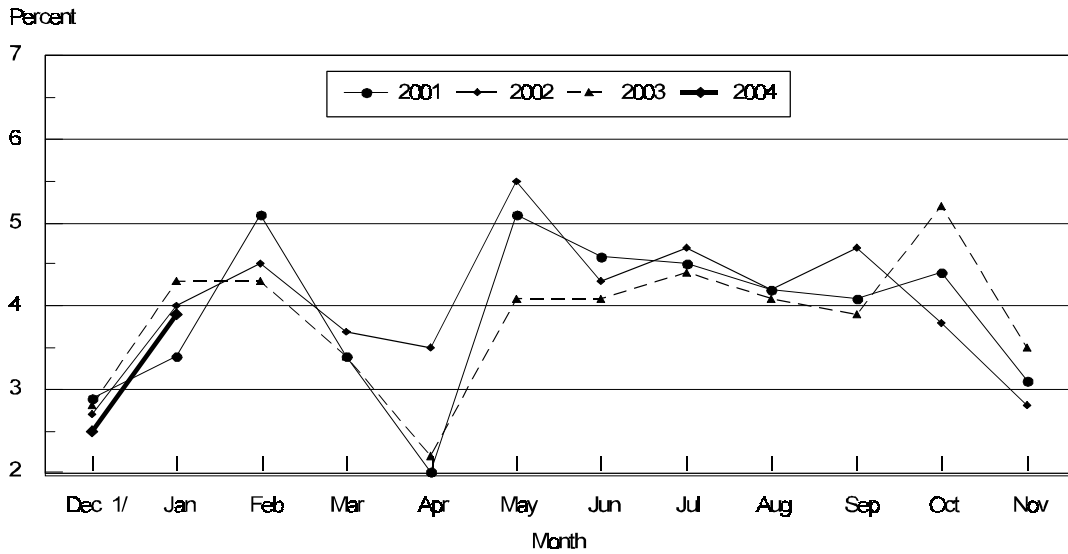
² Estimates for individual States are not available.

**Forced Molt: Percent of All Layers by Month,
United States, 2003-04 ¹**

Month	Percent Being Molted		Percent with Molt Completed	
	2003	2004	2003	2004
	<i>Percent</i>	<i>Percent</i>	<i>Percent</i>	<i>Percent</i>
Jan	4.4	3.9	23.7	22.2
Feb	4.5		24.0	
Mar	3.3		23.7	
Apr	2.2		24.6	
May	4.3		23.5	
Jun	4.2		23.4	
Jul	4.3		23.9	
Aug	4.1		23.5	
Sep	3.9		22.8	
Oct	5.2		23.1	
Nov	3.4		24.1	
Dec	2.5		22.7	

¹ As of first of month.

**All Layers : United States
Percent Being Molted, 2001 - 2004
First of Month**



1/ Previous Year

**Forced Molt: Percent of All Layers by State
and United States, January 2003-04 ¹**

State	Percent Being Molted		Percent with Molt Completed	
	2003	2004	2003	2004
	<i>Percent</i>	<i>Percent</i>	<i>Percent</i>	<i>Percent</i>
AL	1.0	0.5	10.5	4.5
AR	0.5	1.5	12.0	10.5
CA	3.0	7.0	37.0	31.0
CO	3.0	6.0	23.0	22.0
CT	0.0	0.0	0.5	12.5
FL	2.5	3.0	31.5	26.0
GA	3.5	3.0	18.5	17.0
HI	7.5	5.0	52.5	53.0
IL	1.5	15.0	34.0	28.5
IN	3.5	3.5	33.5	32.0
IA	8.5	4.0	30.5	31.5
ME	0.0	0.0	1.5	0.0
MD	2.5	2.5	48.5	18.5
MI	6.5	9.5	29.0	29.0
MN	9.0	3.5	22.5	23.0
MS	1.0	1.0	12.0	10.5
MO	2.5	3.0	22.0	15.0
NE	9.0	6.0	21.5	22.0
NY	1.5	3.5	7.0	1.5
NC	1.0	0.0	11.0	10.5
OH	4.5	5.0	22.0	24.0
OK	0.0	0.5	7.0	8.0
OR	3.5	5.0	35.0	38.0
PA	2.5	3.5	16.5	21.5
SC	2.5	2.5	27.5	24.5
SD	4.0	4.5	29.5	20.5
TX	6.5	5.5	22.5	10.5
VA	1.5	4.0	14.5	7.5
WA	10.5	8.5	47.0	47.0
WI	8.5	1.0	36.0	31.0
30 Sts	4.3	4.0	23.7	22.0
Oth Sts ²	6.1	3.1	23.7	24.9
US	4.4	3.9	23.7	22.2

¹ As of first of month.

² Estimates for individual States are not available.

**Hatchery Production: Eggs in Incubators, Chicks Hatched,
and Placements by Type, United States, December-January 2003-04**

Item	2003	2004	2004 as % of 2003
	<i>1,000</i>	<i>1,000</i>	<i>Percent</i>
Egg-Type			
Eggs in Incubators on Jan 1	30,117	31,655	105
Chicks Hatched During Dec ¹	31,973	33,856	106
Chicks Hatched Jan thru Dec ¹	421,320	415,827	99
Pullets Hatched During Jan for Intended Placements in Hatchery Supply Flocks	187	242	129
7-18 Month Earlier ²	3,014	2,890	96
Broiler-Type			
Eggs in Incubators on Jan 1	623,171	637,048	102
Chicks Hatched During Dec ¹	753,875	778,159	103
Chicks Hatched Jan thru Dec ¹	9,079,000	9,077,215	100
Pullets Hatched During Jan for Intended Placements in Hatchery Supply Flocks	6,475	6,978	108
7-15 Months Earlier ³	61,914	59,943	97

¹ Previous year.

² 2003 includes pullet chicks hatched Jun 2002 through May 2003.

³ 2003 includes pullet chicks hatched Sep 2002 through May 2003.

**Egg-Type Eggs in Incubators: By Region and United States,
January 1, 2003-04**

Geographic Division	2003	2004	2004 as % of 2003
	<i>1,000</i>	<i>1,000</i>	<i>Percent</i>
North Atlantic	4,313	4,613	107
E North Central	5,889	6,935	118
W North Central	6,216	7,295	117
South Atlantic	2,937	2,458	84
South Central	5,721	5,248	92
West	5,041	5,106	101
US	30,117	31,655	105

Regional Listing:

North Atlantic = CT, ME, MA, NH, NJ, NY, PA, RI, VT.

E North Central = IL, IN, MI, OH, WI.

W North Central = IA, KS, MN, MO, NE, ND, SD.

South Atlantic = DE, FL, GA, MD, NC, SC, VA, WV.

South Central = AL, AR, KY, LA, MS, OK, TN, TX.

West = AK, AZ, CA, CO, HI, ID, MT, NM, NV, OR, UT, WA, WY.

**Egg-Type Chicks Hatched: By State and United States,
December 2002-03**

State	December			Jan-Dec		
	2002	2003	2003 as % of 2002	2002	2003	2003 as % of 2002
	<i>1,000</i>	<i>1,000</i>	<i>Percent</i>	<i>1,000</i>	<i>1,000</i>	<i>Percent</i>
AR	716	702	98	9,671	9,949	103
FL	700	742	106	7,087	8,128	115
GA	2,319	2,123	92	25,924	27,831	107
IN	4,634	5,060	109	58,129	58,214	100
IA	5,228	6,529	125	63,187	71,135	113
MN	1,493	1,112	74	17,586	15,049	86
PA	4,349	4,623	106	51,306	53,423	104
Oth Sts ¹	12,534	12,965	103	188,430	172,098	91
US	31,973	33,856	106	421,320	415,827	99

¹ Not published separately to avoid disclosing data for individual operations.

Egg-Type Chicks Hatched: By Month, United States, 2001-03

Month	By Months				Cumulative			
	2001	2002	2003	2003 as % of 2002	2001	2002	2003	2003 as % of 2002
	<i>1,000</i>	<i>1,000</i>	<i>1,000</i>	<i>Percent</i>	<i>1,000</i>	<i>1,000</i>	<i>1,000</i>	<i>Percent</i>
Jan	36,728	35,647	33,499	94	36,728	35,647	33,499	94
Feb	37,836	34,465	29,988	87	74,564	70,112	63,487	91
Mar	41,015	36,977	36,726	99	115,579	107,089	100,213	94
Apr	42,789	38,088	37,531	99	158,368	145,177	137,744	95
May	42,655	38,751	38,206	99	201,023	183,928	175,950	96
Jun	40,822	35,136	36,344	103	241,845	219,064	212,294	97
Jul	38,651	35,573	35,593	100	280,496	254,637	247,887	97
Aug	34,987	35,681	33,179	93	315,483	290,318	281,066	97
Sep	37,140	35,734	35,777	100	352,623	326,052	316,843	97
Oct	35,825	32,149	34,999	109	388,448	358,201	351,842	98
Nov	32,355	31,146	30,129	97	420,803	389,347	381,971	98
Dec	31,870	31,973	33,856	106	452,673	421,320	415,827	99

**Intended Placements: Egg-Type Pullet Chicks for Hatchery Supply
Flocks by Month and Total, United States, 2001-03¹**

Month	Pullet Chicks Hatched			2003 as % of 2002	Cumulative Potential Placements Relative to Current Supply Flocks 7-18 Months Earlier ²		
	2001	2002	2003		2002	2003	2004
	<i>1,000</i>	<i>1,000</i>	<i>1,000</i>	<i>Percent</i>	<i>1,000</i>	<i>1,000</i>	<i>1,000</i>
Jan	236	228	198	87	3,158	2,974	2,974
Feb	214	247	221	89	3,205	2,916	2,918
Mar	284	237	315	133	3,239	2,886	2,881
Apr	311	295	276	94	3,225	2,944	2,873
May	315	319	279	87	3,134	2,980	2,993
Jun	261	221	305	138	3,087	2,946	3,081
Jul	340	282	226	80	3,048	2,927	3,136
Aug	251	221	184	83	3,040	2,897	
Sep	219	277	269	97	3,073	2,871	
Oct	150	186	306	165	3,026	2,949	
Nov	261	227	315	139	3,010	2,930	
Dec	206	187	242	129	3,014	2,890	
Total	3,048	2,927	3,136	107			

¹ Reported by leading breeders. Coverage may not be 100 percent. Includes expected pullet chicks from eggs sold during the preceding month at the rate of 125 pullet chicks per 30 dozen case of eggs.

² For December 2003, includes breeder pullet chicks hatched Jun 2002 through May 2003. The 7-18 months represent the first laying cycle. Molting and additional laying cycles will increase the cumulative potential placements.

**Broiler-Type Eggs in Incubators: By Region
and United States, January 1, 2003-04**

Geographic Division	2003	2004	2004 as % of 2003
	<i>1,000</i>	<i>1,000</i>	<i>Percent</i>
North Atlantic	11,758	12,108	103
E North Central	7,843	8,075	103
W North Central	19,202	21,729	113
South Atlantic	229,754	230,389	100
South Central	332,073	340,824	103
West	22,541	23,923	106
US	623,171	637,048	102

**Broiler-Type Chicks Hatched: By State
and United States, December 2002-03**

State	December			Jan-Dec		
	2002	2003	2003 as % of 2002	2002	2003	2003 as % of 2002
	<i>1,000</i>	<i>1,000</i>	<i>Percent</i>	<i>1,000</i>	<i>1,000</i>	<i>Percent</i>
AL	102,392	108,364	106	1,245,980	1,234,593	99
AR	107,716	112,029	104	1,286,467	1,309,090	102
DE	12,642	13,515	107	149,886	156,516	104
FL	7,748	4,926	64	98,904	62,245	63
GA	110,347	119,326	108	1,337,114	1,366,698	102
KY	23,945	25,181	105	279,918	286,944	103
LA	12,150	14,293	118	158,771	164,583	104
MD	34,842	31,998	92	413,365	399,527	97
MS	68,360	70,434	103	812,454	825,602	102
NC	64,968	64,587	99	794,413	773,038	97
OK	22,865	23,245	102	272,392	274,695	101
PA	12,688	13,421	106	153,831	150,836	98
SC	16,287	13,851	85	197,274	192,140	97
TX	55,603	53,322	96	653,277	632,441	97
VA	22,935	24,113	105	274,406	281,354	103
CA, MO, TN, & WV	58,710	63,345	108	695,822	710,662	102
19 Sts ¹	734,198	755,950	103	8,824,274	8,820,964	100
Oth Sts ²	19,677	22,209	113	254,726	256,251	101
US	753,875	778,159	103	9,079,000	9,077,215	100

¹ States in the weekly hatchery production estimating program.

² Not published separately to avoid disclosing data for individual operations.

Broiler-Type Chicks Hatched: By Month, United States, 2001-03

Month	By Months				Cumulative			
	2001	2002	2003	2003 as % of 2002	2001	2002	2003	2003 as % of 2002
	<i>1,000</i>	<i>1,000</i>	<i>1,000</i>	<i>Percent</i>	<i>1,000</i>	<i>1,000</i>	<i>1,000</i>	<i>Percent</i>
Jan	745,939	776,961	759,773	98	745,939	776,961	759,773	98
Feb	683,255	703,323	694,590	99	1,429,194	1,480,284	1,454,363	98
Mar	778,760	791,093	774,836	98	2,207,954	2,271,377	2,229,199	98
Apr	755,455	765,415	761,145	99	2,963,409	3,036,792	2,990,344	98
May	785,704	799,262	791,905	99	3,749,113	3,836,054	3,782,249	99
Jun	766,534	776,332	774,680	100	4,515,647	4,612,386	4,556,929	99
Jul	769,448	781,707	777,341	99	5,285,095	5,394,093	5,334,270	99
Aug	771,550	780,020	783,175	100	6,056,645	6,174,113	6,117,445	99
Sep	738,379	740,396	739,191	100	6,795,024	6,914,509	6,856,636	99
Oct	748,274	720,564	734,801	102	7,543,298	7,635,073	7,591,437	99
Nov	703,365	690,052	707,619	103	8,246,663	8,325,125	8,299,056	100
Dec	774,453	753,875	778,159	103	9,021,116	9,079,000	9,077,215	100

**Intended Placements: Broiler-Type Pullet Chicks for Hatchery
Supply Flocks by Month and Total, 2001-03 ¹**

Month	Pullet Chicks Hatched			2003 as % of 2002	Cumulative Potential Placements Relative to Current Supply Flocks 7-15 Months Earlier ²		
	2001	2002	2003		2002	2003	2004
	<i>1,000</i>	<i>1,000</i>	<i>1,000</i>	<i>Percent</i>	<i>1,000</i>	<i>1,000</i>	<i>1,000</i>
US Place- ments							
Jan	6,685	6,264	6,269	100	60,750	62,473	60,015
Feb	6,748	7,275	6,659	92	60,382	62,371	60,821
Mar	6,752	6,775	6,329	93	60,771	62,559	61,284
Apr	6,398	6,814	6,720	99	60,989	62,658	61,463
May	7,117	7,597	7,612	100	61,008	62,659	61,679
Jun	6,822	7,206	6,748	94	61,521	62,322	61,966
Jul	6,326	6,602	7,071	107	61,346	62,022	62,615
Aug	7,494	7,449	7,401	99	61,212	61,477	
Sep	6,647	6,676	6,654	100	61,370	60,539	
Oct	6,704	6,265	6,485	104	61,323	59,662	
Nov	7,261	6,938	6,946	100	61,811	59,780	
Dec	6,577	6,475	6,978	108	61,914	59,943	
Annual Total	81,531	82,336	81,872	99			
Total Place- ments ³							
Jan	7,615	7,415	7,388	100			
Feb	8,275	8,491	8,094	95			
Mar	8,325	7,997	7,391	92			
Apr	7,915	8,119	8,000	99			
May	8,647	8,982	8,920	99			
Jun	8,220	8,802	8,341	95			
Jul	7,687	8,083	8,555	106			
Aug	9,133	8,913	8,756	98			
Sep	8,047	8,002	8,338	104			
Oct	7,848	7,438	7,856	106			
Nov	9,017	8,202	8,246	101			
Dec	8,119	8,016	8,185	102			
Annual Total	98,848	98,460	98,070	100			

¹ Reported by leading breeders. Coverage may not be 100 percent. Includes expected pullet chicks from eggs sold during the preceding month at the rate of 125 pullet chicks per 30 dozen case of eggs.

² For Dec 2003, includes breeder pullet chicks hatched Sep 2002 through May 2003.

³ U.S. production of intended placements worldwide.

Procedures and Reliability

Data Sources: Primary data for the "**Chickens and Eggs**" report are from weekly and/or monthly questionnaires sent to producers. An attempt is made to collect information for layer and egg estimates from each known contractor and independent producer who has over 30,000 table egg layers. Coverage for operations with less than 30,000 table egg layers are estimated each month based on data reported in December. Approximately 900 contractors, independent egg producers, and started pullet operations are contacted each month. All known hatcheries, approximately 330, are contacted for information on a weekly and/or monthly basis.

Revisions: The previous month's estimates are subject to revision if late reports or corrected data indicates a different level. Additionally, revisions needed after the monthly report will be made at the end of the marketing year and published in the annual summaries of "**Chickens and Eggs Summary**" and "**Hatchery Production**".

Procedures and Reliability: Operations are mailed a questionnaire and given adequate time to respond by mail. Those that do not respond are phoned. Great care is exercised to ensure that all operations are accounted for during each survey period. However, there are usually missing reports that must be accounted for in the estimates.

Sound statistical methodology is employed to derive estimates from the reported data. All data are checked for unusual values. All operations' data are compared to their own past operating profiles and also to trends from other operations. Data for missing operations are estimated based on similar operations or historical data. Survey data are subject to non-sampling errors such as omissions and mistakes in reporting and in processing. While these errors cannot be measured directly, they are minimized by reviewing all data for consistency and reasonableness.

Egg-type chicks hatched are comprised of all chicks of egg-type domesticated breeds including males and chicks destined for hatchery supply flocks and research purposes. The relationship of chicks hatched to chicken inventory and poultry marketings is carefully monitored. The disposition of egg-type chicks hatched prior to placement into the laying flock can vary significantly, which can make comparisons to changes in layer inventory inconsistent over time.

Intended placement data reported by leading breeders include pullet chicks expected from eggs sold the preceding month. The breeders in this report account for a large percentage of replacement pullets for hatchery supply flocks. Production of replacement pullets by these breeders indicates the number of pullets available to hatchery supply flocks several months before the pullets will actually move into the flocks. "Hatchery Supply Flocks" include all generations of layers which could lay eggs to supply a hatchery. This includes the generations of parents, grandparents, great-grandparents, pedigree, etc. Also included are research flocks, vaccine flocks, and specific pathogen-free flocks. The broiler cumulative potential placements are a moving total of the intended placements 7-15 months earlier. The egg-type cumulative potential placements of 7-18 months represent the first laying cycle. Molting and additional laying cycles will increase the cumulative potential placements of egg-type hatching flocks.

The next "*Chickens and Eggs*" report will be released at 3 p.m. ET on February 23, 2004.

The United States Department of Agriculture (USDA) prohibits discrimination in all its programs on the basis of race, color, national origin, gender, religion, age, disability, political beliefs, sexual orientation, and marital or family status. (Not all prohibited bases apply to all programs.) Persons with disabilities who require alternative means for communication of program information (braille, large print, audiotape, etc.) should contact the USDA's TARGET Center at 202-720-2600 (voice and TDD).

To file a complaint of discrimination, write USDA, Director, Office of Civil Rights, Room 326-W, Whitten Building, 1400 Independence Avenue, SW, Washington, D.C., 20250-9410, or call 202-720-5964 (voice or TDD). USDA is an equal opportunity provider and employer.

ACCESS TO REPORTS!!

For your convenience, there are several ways to obtain NASS reports, data products, and services:

INTERNET ACCESS

All NASS reports are available free of charge on the worldwide Internet. For access, connect to the Internet and go to the NASS Home Page at: www.usda.gov/nass/. Select "Today's Reports" or Publications and then Reports Calendar or Publications and then Search, by Title or Subject.

E-MAIL SUBSCRIPTION

All NASS reports are available by subscription free of charge direct to your e-mail address. Starting with the NASS Home Page at www.usda.gov/nass/, click on **Publications**, then click on the **Subscribe by E-mail** button which takes you to the page describing e-mail delivery of reports. Finally, click on **Go to the Subscription Page** and follow the instructions.

PRINTED REPORTS OR DATA PRODUCTS

CALL OUR TOLL-FREE ORDER DESK: 800-999-6779 (U.S. and Canada)
Other areas, please call 703-605-6220 FAX: 703-605-6900
(Visa, MasterCard, check, or money order acceptable for payment.)

ASSISTANCE

For **assistance** with general agricultural statistics or further information about NASS or its products or services, contact the **Agricultural Statistics Hotline** at **800-727-9540**, 7:30 a.m. to 4:00 p.m. ET, or e-mail: nass@nass.usda.gov.

Ensuring a Healthy Food Supply



February 19-20, 2004
Crystal Gateway
Marriott Hotel
Arlington, Virginia

Shoppers demand affordable food that's safe, healthy and right for their family's diet. Foreign consumers, too, have high standards for American-grown foods. Meeting their expectations poses challenges for farmers and ranchers, the food industry and government.

At Agricultural Outlook Forum 2004, you will hear about the latest developments in food safety, health concerns and innovative products. The program also features in-depth analysis of 2004 commodity planting, trade and market prospects. And you will receive new 10-year commodity projections from USDA.

Networking opportunities abound at this popular event. Register online today. For program updates, send your name and e-mail address to agforum@oce.usda.gov.

www.usda.gov/oce agforum@oce.usda.gov (877) 891-2208 toll free