

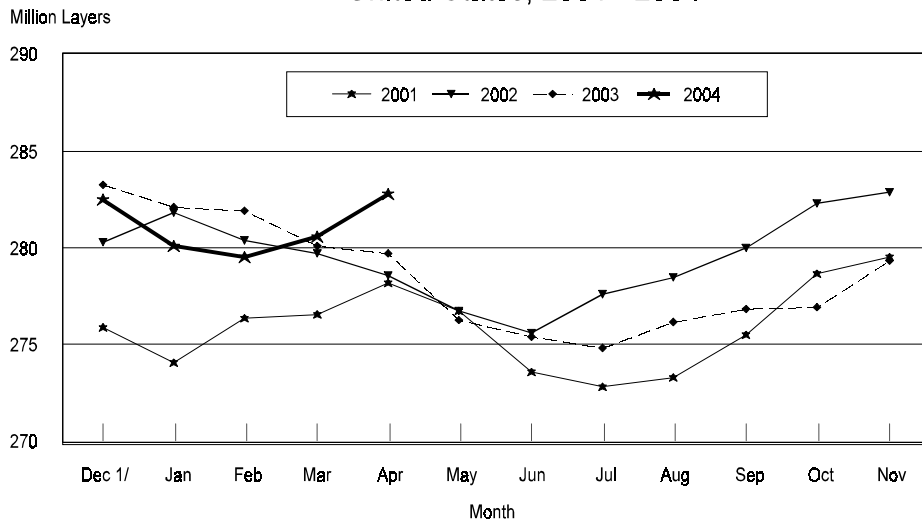
Released April 23, 2004, by the National Agricultural Statistics Service (NASS), Agricultural Statistics Board, U.S. Department of Agriculture. For information on *Chickens and Eggs* call Tom Kruchten at (202) 690-4870, for "Hatch" call Jody Roberts at (202) 690-8632, office hours 7:30 a.m. to 4:00 p.m. ET.

March Egg Production Up 1 Percent

U.S. egg production totaled 7.53 billion during March 2004, up 1 percent from last year. Production included 6.44 billion table eggs, and 1.09 billion hatching eggs, of which 1.03 billion were broiler-type and 58.0 million were egg-type. The total number of layers during March 2004 averaged 341 million, up slightly from a year earlier. March egg production per 100 layers was 2,209 eggs, up 1 percent from March 2003.

March 2004 contained 23 weekdays, four Saturdays compared to March 2003 which contained 21 weekdays, and five Saturdays.

Table Egg Layers First of Month United States, 2001 - 2004



1/ Previous Year

All layers in the U.S. on April 1, 2004, totaled 342 million, up 1 percent from a year ago. The 342 million layers consisted of 283 million layers producing table or commercial type eggs, 56.6 million layers producing broiler-type hatching eggs, and 2.44 million layers producing egg-type hatching eggs. Rate of lay per day on April 1, 2004, averaged 72.0 eggs per 100 layers, up 2 percent from a year ago.

Laying flocks in the 30 major egg producing States produced 7.03 billion eggs during March 2004, up 1 percent from a year ago. The average number of layers during March, at 318 million, was up slightly from a year ago.

Individual State estimates are available for the 30 major egg producing States. These States are listed on page 8 of this release and account for approximately 94 percent of the total U.S. egg production. Production for the other States are grouped into an "Other States" category and combined with the 30 States published individually to obtain a U.S. estimate.

Special Note

Preliminary 2002 Census data were used in the review process for the revised 2002 and 2003 layer and egg estimates in this publication. The revised estimates may appear disjointed from historical data until the release of the 5 - year *Final Estimates* publications which are scheduled for April 29, 2004.

Egg-Type Chicks Hatched Up 2 Percent

Egg-type chicks hatched during March totaled 37.5 million, up 2 percent from March 2003. Eggs in incubators totaled 33.9 million on April 1, 2004, down 3 percent from a year ago.

Domestic placements of egg-type pullet chicks for future hatchery supply flocks by leading breeders totaled 401,000 during March 2004, up 26 percent from March 2003.

Broiler Hatch Up 2 Percent

The March 2004 hatch of broiler-type chicks, at 791 million, was up 2 percent from March of the previous year. There were 653 million eggs in incubators on April 1, 2004, up 2 percent from a year earlier.

Leading breeders placed 6.8 million broiler-type pullet chicks for future domestic hatchery supply flocks during March 2004, down 3 percent from March 2003.

**All Layers: Average Number on Hand During the Month,
United States, 2001-04**

Month	2001	2002	2003	2004
	<i>1,000 Layers</i>	<i>1,000 Layers</i>	<i>1,000 Layers</i>	<i>1,000 Layers</i>
Dec ¹	332,283	339,970	340,316	338,243
Jan	333,748	340,815	340,910	337,749
Feb	335,763	339,857	340,575	338,942
Mar	336,822	339,329	339,885	340,835
Apr	337,141	338,647	338,182	
May	335,163	337,377	336,164	
Jun	332,928	337,133	334,789	
Jul	332,244	337,610	334,179	
Aug	332,808	338,119	334,332	
Sep	335,276	339,197	334,198	
Oct	337,593	340,111	335,333	
Nov	338,366	340,118	338,283	

¹ December preceding year.

**Eggs: Production During the Month by Type,
United States, 2003-04**

Month	Total Eggs		Table Eggs		Hatching Eggs	
	2003	2004	2003	2004	2003	2004
	<i>Million Eggs</i>	<i>Million Eggs</i>	<i>Million Eggs</i>	<i>Million Eggs</i>	<i>Million Eggs</i>	<i>Million Eggs</i>
Dec ¹	7,451	7,520	6,392	6,466	1,058	1,055
Jan	7,390	7,371	6,301	6,315	1,088	1,056
Feb	6,665	6,890	5,673	5,890	991	1,001
Mar	7,424	7,530	6,316	6,444	1,108	1,087
Apr	7,187		6,103		1,084	
May	7,327		6,200		1,127	
Jun	7,105		6,028		1,077	
Jul	7,403		6,316		1,086	
Aug	7,367		6,296		1,070	
Sep	7,112		6,095		1,017	
Oct	7,439		6,381		1,058	
Nov	7,326		6,301		1,025	
During Year	87,196	29,311	74,402	25,115	12,789	4,199

¹ December preceding year.

**Layers and Eggs: Layers on Hand and Eggs Produced by Type,
and Forced Molt, United States, February-March 2003-04**

Item	Unit	2003	2004	2004 as % of 2003
Layers During Feb	1,000			
All Layers		340,575	338,942	100
Table Egg Type		281,034	280,057	100
Hatching Egg Type		59,541	58,886	99
Broiler-Type Hatching		56,831	56,447	99
Egg-Type Hatching		2,710	2,441	90
Eggs per 100 Layers During Feb	Number			
All Layers		1,957	2,033	104
Table Egg Type		2,019	2,103	104
Hatching Egg Type		1,664	1,700	102
Broiler-Type Hatching		1,640	1,678	102
Egg-Type Hatching		2,177	2,212	102
Eggs Produced During Feb	Million			
All Layers		6,665	6,890	103
Table Egg Type		5,673	5,890	104
Hatching Egg Type		991	1,001	101
Broiler-Type Hatching		932	947	102
Egg-Type Hatching		59	54	92
Layers on Mar 1	1,000			
All Layers		340,080	339,778	100
Table Egg Type		280,082	280,529	100
Hatching Egg Type		59,998	59,249	99
Broiler-Type Hatching		57,335	56,810	99
Egg-Type Hatching		2,663	2,439	92
Eggs per 100 Layers on Mar 1	Number			
All Layers		69.8	70.5	101
Table Egg Type		72.1	72.9	101
Hatching Egg Type		58.8	59.0	100
Broiler-Type Hatching		58.0	58.3	101
Egg-Type Hatching		77.8	75.0	96
Forced Molt Layers on Mar 1	Percent			
Percent Being Molted		3.3	4.6	139
Percent with Molt Completed		23.7	23.3	98
Layers Sold for Slaughter During Feb	1,000	14,162	13,930	98
Layers Rendered, Died, Destroyed, Composted or Disappeared For Any Reason During Feb	1,000	7,154	5,976	84
Pullets Less Than 20 Weeks of Age, Mar 1	1,000	96,933	97,153	100
Pullets Added During Feb ¹	1,000	23,669	21,656	91

¹ Pullet chicks one day old added to pullet flocks.

**Layers and Eggs: Layers on Hand and Eggs Produced by Type,
and Forced Molt, United States, March-April 2003-04**

Item	Unit	2003 ¹	2004	2004 as % of 2003
Layers During Mar	1,000			
All Layers		339,885	340,835	100
Table Egg Type		279,909	281,664	101
Hatching Egg Type		59,976	59,171	99
Broiler-Type Hatching		57,304	56,727	99
Egg-Type Hatching		2,672	2,444	91
Eggs per 100 Layers During Mar	Number			
All Layers		2,184	2,209	101
Table Egg Type		2,256	2,288	101
Hatching Egg Type		1,847	1,837	99
Broiler-Type Hatching		1,820	1,814	100
Egg-Type Hatching		2,433	2,373	98
Eggs Produced During Mar	Million			
All Layers		7,424	7,530	101
Table Egg Type		6,316	6,444	102
Hatching Egg Type		1,108	1,087	98
Broiler-Type Hatching		1,043	1,029	99
Egg-Type Hatching		65	58	89
Layers on Apr 1	1,000			
All Layers		339,645	341,849	101
Table Egg Type		279,713	282,779	101
Hatching Egg Type		59,932	59,070	99
Broiler-Type Hatching		57,265	56,630	99
Egg-Type Hatching		2,667	2,440	91
Eggs per 100 Layers on Apr 1	Number			
All Layers		70.9	72.0	102
Table Egg Type		73.3	74.7	102
Hatching Egg Type		59.7	59.5	100
Broiler-Type Hatching		58.8	58.7	100
Egg-Type Hatching		78.9	76.9	97
Forced Molt Layers, Apr 1	Percent			
Percent Being Molted		2.2	2.6	118
Percent with Molt Completed		24.6	23.4	95
Layers Sold for Slaughter During Mar	1,000	15,106	11,707	78
Layers Rendered, Died, Destroyed, Composted or Disappeared For Any Reason During Mar	1,000	6,985	6,642	95
Pullets Less Than 20 Weeks of Age, Apr 1	1,000	97,457	96,518	99
Pullets Added During Mar ²	1,000	26,251	22,881	87

¹ Revised.

² Pullet chicks one day old added to pullet flocks.

Layers and Eggs: Layers on Hand and Eggs Produced by Type, and Forced Molt, 30 Selected States, February-March, 2003-04 ¹

Item	Unit	2003	2004	2004 as % of 2003
Layers During Feb	1,000			
All Layers		318,257	316,076	99
Table Egg Type		263,510	262,078	99
Hatching Egg Type		54,747	53,999	99
Broiler-Type Hatching		52,122	51,694	99
Egg-Type Hatching		2,625	2,307	88
Eggs per 100 Layers During Feb	Number			
All Layers		1,957	2,036	104
Table Egg Type		2,017	2,106	104
Hatching Egg Type		1,668	1,700	102
Broiler-Type Hatching		1,642	1,677	102
Egg-Type Hatching		2,171	2,211	102
Eggs Produced During Feb	Million			
All Layers		6,229	6,436	103
Table Egg Type		5,316	5,518	104
Hatching Egg Type		913	918	101
Broiler-Type Hatching		856	867	101
Egg-Type Hatching		57	51	89
Layers on Mar 1	1,000			
All Layers		317,532	316,954	100
Table Egg Type		262,372	262,658	100
Hatching Egg Type		55,160	54,296	98
Broiler-Type Hatching		52,584	51,997	99
Egg-Type Hatching		2,576	2,299	89
Eggs per 100 Layers on Mar 1	Number			
All Layers		69.7	70.5	101
Table Egg Type		72.0	72.9	101
Hatching Egg Type		58.9	59.0	100
Broiler-Type Hatching		58.0	58.3	101
Egg-Type Hatching		77.8	76.0	98
Forced Molt Layers on Mar 1	Percent			
Percent Being Molted		3.4	4.6	135
Percent with Molt Completed		23.5	23.6	100
Layers Sold for Slaughter During Feb	1,000	13,055	12,768	98
Layers Rendered, Died, Destroyed, Composted or Disappeared For Any Reason During Feb	1,000	6,863	5,696	83
Pullets Less Than 20 Weeks of Age, Mar 1	1,000	90,444	90,292	100
Pullets Added During Feb ²	1,000	21,981	20,282	92

¹ The 30 States are listed in the table on page 8.

² Pullet chicks one day old added to pullet flocks.

Layers and Eggs: Layers on Hand and Eggs Produced by Type, and Forced Molt, 30 Selected States, March-April, 2003-04¹

Item	Unit	2003 ²	2004	2004 as % of 2003
Layers During Mar	1,000			
All Layers		317,154	317,941	100
Table Egg Type		262,072	263,713	101
Hatching Egg Type		55,082	54,228	98
Broiler-Type Hatching		52,498	51,926	99
Egg-Type Hatching		2,584	2,302	89
Eggs per 100 Layers During Mar	1,000			
All Layers		2,184	2,210	101
Table Egg Type		2,254	2,287	101
Hatching Egg Type		1,850	1,840	99
Broiler-Type Hatching		1,821	1,816	100
Egg-Type Hatching		2,438	2,389	98
Eggs Produced During Mar	Million			
All Layers		6,926	7,028	101
Table Egg Type		5,907	6,030	102
Hatching Egg Type		1,019	998	98
Broiler-Type Hatching		956	943	99
Egg-Type Hatching		63	55	87
Layers on Apr 1	1,000			
All Layers		316,742	318,894	101
Table Egg Type		261,756	264,753	101
Hatching Egg Type		54,986	54,141	98
Broiler-Type Hatching		52,406	51,844	99
Egg-Type Hatching		2,580	2,297	89
Eggs per 100 Layers on Apr 1	Number			
All Layers		71.0	72.1	102
Table Egg Type		73.3	74.6	102
Hatching Egg Type		59.9	59.7	100
Broiler-Type Hatching		58.9	58.9	100
Egg-Type Hatching		79.0	76.5	97
Forced Molt Layers, Apr 1	Percent			
Percent Being Molted		2.2	2.5	114
Percent with Molt Completed		24.5	23.3	95
Layers Sold for Slaughter During Mar	1,000	13,973	10,875	78
Layers Rendered, Died, Destroyed, Composted or Disappeared For Any Reason During Mar	1,000	6,716	5,899	88
Pullets Less Than 20 Weeks of Age, Apr 1	1,000	90,783	89,933	99
Pullets Added During Mar ³	1,000	23,956	21,273	89

¹ The 30 States are listed in the table on page 8.

² Revised.

³ Pullet chicks one day old added to pullet flocks.

**Layers and Eggs: Layers on Hand and Eggs Produced by State
and United States, During February 2003-04**

State	Table Egg Layers in Flocks 30,000 and Above		All Layers ¹		Eggs per 100 for All Layers ¹	
	2003	2004	2003	2004	2003	2004
	<i>1,000</i>	<i>1,000</i>	<i>1,000</i>	<i>1,000</i>	<i>Number</i>	<i>Number</i>
AL	2,419	1,935	9,975	9,190	1,724	1,752
AR	4,559	4,270	15,271	14,919	1,716	1,756
CA	21,206	20,200	21,825	20,676	1,979	2,080
CO	3,401	3,527	3,911	3,998	2,020	2,126
CT	2,951	2,811	3,010	2,865	1,927	2,234
FL	10,323	10,763	10,868	11,275	1,969	2,146
GA	11,283	11,285	20,630	20,567	1,852	1,940
HI	466	462	509	501	1,768	1,858
IL	3,506	3,651	3,735	3,870	1,928	1,990
IN	22,229	22,330	22,872	23,084	2,007	2,071
IA	37,704	39,770	38,488	40,452	2,008	2,158
ME	4,248	3,948	4,300	3,993	2,023	2,079
MD	3,041	3,006	3,260	3,100	2,086	2,129
MI	6,969	7,162	7,220	7,413	2,036	2,024
MN	10,745	10,540	11,350	11,123	2,159	2,113
MS	1,871	1,862	6,846	7,066	1,811	1,797
MO	5,453	5,806	6,861	7,166	2,055	2,107
NE	11,622	11,764	11,722	11,839	2,022	2,146
NY	3,389	3,659	3,670	4,020	2,125	2,313
NC	3,368	3,341	11,141	10,894	1,741	1,781
OH	29,632	26,687	30,133	27,109	1,958	1,999
OK	2,015	1,942	4,159	4,117	1,755	1,822
OR	2,690	2,878	2,868	3,054	2,127	2,096
PA	23,020	22,165	24,803	23,938	2,130	2,168
SC	4,099	4,140	5,267	5,266	2,013	1,994
SD	2,299	3,136	2,499	3,336	1,961	2,158
TX	14,257	14,045	18,720	18,534	1,939	1,996
VA	1,279	1,366	3,309	3,388	1,753	1,831
WA	4,878	4,842	4,959	4,912	1,976	2,036
WI	3,562	3,890	4,076	4,412	1,963	2,131
30 Sts	258,484	257,183	318,257	316,076	1,957	2,036
Oth Sts ²	16,382	16,786	22,318	22,866	1,954	1,985
US	274,866	273,969	340,575	338,942	1,957	2,033

¹ Includes all layers and eggs produced in both table egg and hatching egg flocks regardless of size.

² Estimates for individual States are not available.

**Layers and Eggs: Layers on Hand and Eggs Produced by State
and United States, During March 2003-04**

State	Table Egg Layers in Flocks 30,000 and Above		All Layers ¹		Eggs per 100 for All Layers ¹	
	2003	2004	2003	2004	2003	2004
	<i>1,000</i>	<i>1,000</i>	<i>1,000</i>	<i>1,000</i>	<i>Number</i>	<i>Number</i>
AL	2,360	1,939	9,856	9,224	1,928	1,865
AR	4,722	4,327	15,731	15,212	1,894	1,913
CA	20,180	20,039	20,749	20,529	2,222	2,246
CO	3,294	3,432	3,838	3,950	2,319	2,304
CT	2,929	2,775	2,986	2,827	2,210	2,441
FL	10,356	10,956	10,903	11,481	2,238	2,352
GA	11,287	11,287	20,734	20,510	2,088	2,101
HI	477	462	519	504	1,927	2,083
IL	3,440	3,656	3,669	3,880	2,262	2,345
IN	22,361	22,444	23,042	23,229	2,261	2,234
IA	38,048	40,462	38,812	41,156	2,185	2,294
ME	4,197	3,959	4,248	4,002	2,331	2,299
MD	2,774	3,187	2,965	3,268	2,327	2,326
MI	6,823	7,219	7,074	7,470	2,276	2,222
MN	10,825	10,453	11,435	10,991	2,256	2,293
MS	1,872	1,841	6,844	7,004	2,046	1,956
MO	5,513	5,822	6,950	7,207	2,273	2,206
NE	11,604	11,753	11,704	11,828	2,230	2,317
NY	3,436	3,751	3,723	4,091	2,391	2,469
NC	3,300	3,350	11,152	10,939	1,928	1,956
OH	29,152	27,000	29,650	27,463	2,175	2,218
OK	2,018	1,877	4,129	4,025	1,962	1,938
OR	2,619	2,871	2,785	3,062	2,226	2,351
PA	22,890	22,304	24,629	24,063	2,387	2,352
SC	4,196	4,152	5,334	5,225	2,268	2,163
SD	2,351	3,247	2,551	3,447	2,234	2,321
TX	14,333	14,253	18,784	18,728	2,215	2,184
VA	1,175	1,303	3,243	3,335	1,912	2,009
WA	4,873	4,874	4,954	4,944	2,160	2,245
WI	3,653	3,821	4,161	4,347	2,283	2,346
30 Sts	257,058	258,816	317,154	317,941	2,184	2,210
Oth Sts ²	16,696	16,758	22,731	22,894	2,191	2,193
US	273,754	275,574	339,885	340,835	2,184	2,209

¹ Includes all layers and eggs produced in both table egg and hatching egg flocks regardless of size.

² Estimates for individual States are not available.

**Egg Production: By Type, State, and United States,
February 2003-04**

State	Total Production		Table Eggs ¹		Hatching Eggs ¹	
	2003	2004	2003	2004	2003	2004
	<i>Million Eggs</i>	<i>Million Eggs</i>	<i>Million Eggs</i>	<i>Million Eggs</i>	<i>Million Eggs</i>	<i>Million Eggs</i>
AL	172	161	49	41	123	120
AR	262	262	91	87	171	175
CA	432	430				
CO	79	85				
CT	58	64				
FL	214	242	207	232	7	10
GA	382	399	226	238	156	161
HI	9.0	9.3	9.0	9.3	0	0
IL	72	77	68	74	4	3
IN	459	478	448	467	11	11
IA	773	873				
ME	87	83				
MD	68	66	65	65	3	1
MI	147	150				
MN	234	235	226	227	8	8
MS	124	127	40	38	84	89
MO	141	151				
NE	237	254	237	254	0	0
NY	78	93				
NC	194	194	72	76	122	118
OH	590	542				
OK	73	75	42	42	31	33
OR	61	64	59	62	2	2
PA	529	519	514	503	15	16
SC	106	105	88	87	18	18
SD	49	72	49	72	0	0
TX	363	370				
VA	58	62	24	29	34	33
WA	98	100				
WI	80	94				
30 Sts	6,229	6,436	5,316	5,518	913	918
Oth Sts ²	436	454	357	372	78	83
US	6,665	6,890	5,673	5,890	991	1,001

¹ Data by type of flock not shown for some States to avoid disclosing individual operations.

² Estimates for individual States are not available.

**Egg Production: By Type, State, and United States,
March 2003-04**

State	Total Production		Table Eggs ¹		Hatching Eggs ¹	
	2003	2004	2003	2004	2003	2004
	<i>Million Eggs</i>	<i>Million Eggs</i>	<i>Million Eggs</i>	<i>Million Eggs</i>	<i>Million Eggs</i>	<i>Million Eggs</i>
AL	190	172	54	44	136	128
AR	298	291	107	98	191	193
CA	461	461				
CO	89	91				
CT	66	69				
FL	244	270	235	260	9	10
GA	433	431	259	259	174	172
HI	10.0	10.5	10.0	10.5	0	0
IL	83	91	79	88	4	3
IN	521	519	508	506	13	13
IA	848	944				
ME	99	92				
MD	69	76	66	75	3	1
MI	161	166				
MN	258	252	249	244	9	8
MS	140	137	47	42	93	95
MO	158	159				
NE	261	274	261	274	0	0
NY	89	101				
NC	215	214	78	80	137	134
OH	645	609				
OK	81	78	47	43	34	35
OR	62	72	61	70	1	2
PA	587	566	571	549	16	17
SC	121	113	101	94	20	19
SD	57	80	57	80	0	0
TX	416	409				
VA	62	67	23	30	39	37
WA	107	111				
WI	95	102				
30 Sts	6,926	7,028	5,907	6,030	1,019	998
Oth Sts ²	498	502	409	414	89	89
US	7,424	7,530	6,316	6,444	1,108	1,087

¹ Data by type of flock not shown for some States to avoid disclosing individual operations.

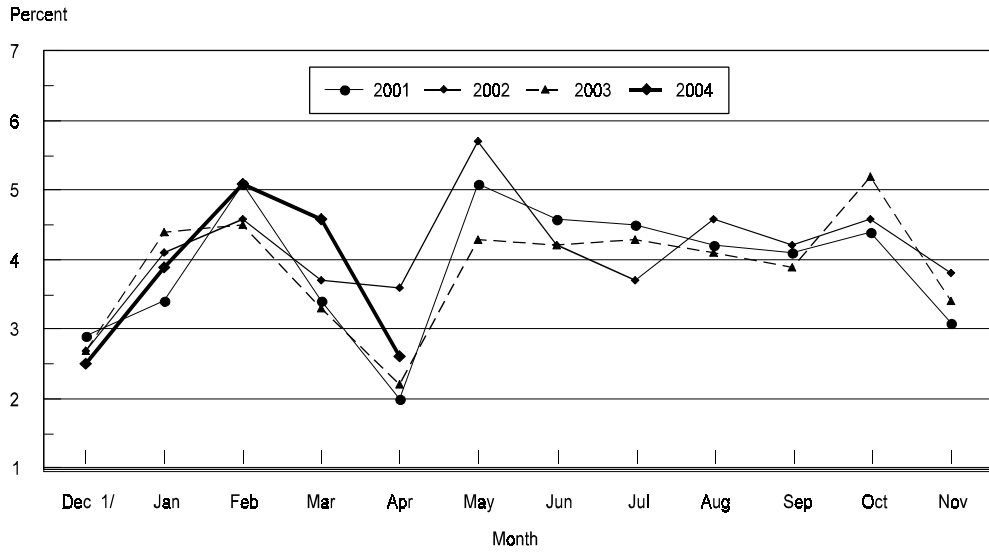
² Estimates for individual States are not available.

**Forced Molt: Percent of All Layers by Month,
United States, 2003-04¹**

Month	Percent Being Molted		Percent with Molt Completed	
	2003	2004	2003	2004
	<i>Percent</i>	<i>Percent</i>	<i>Percent</i>	<i>Percent</i>
Jan	4.4	3.9	23.7	22.4
Feb	4.5	4.9	24.0	22.8
Mar	3.3	4.6	23.7	23.3
Apr	2.2	2.6	24.6	23.4
May	4.3		23.5	
Jun	4.2		23.4	
Jul	4.3		23.9	
Aug	4.1		23.5	
Sep	3.9		22.8	
Oct	5.2		23.1	
Nov	3.4		24.1	
Dec	2.5		22.7	

¹ As of first of month.

**All Layers : United States
Percent Being Molted, 2001 - 2004
First of Month**



1/ Previous Year

**Forced Molt: Percent of All Layers by State
and United States, April 2003-04 ¹**

State	Percent Being Molted		Percent with Molt Completed	
	2003	2004	2003	2004
	<i>Percent</i>	<i>Percent</i>	<i>Percent</i>	<i>Percent</i>
AL	0.0	0.0	8.0	3.5
AR	1.0	1.0	9.5	9.0
CA	2.5	1.5	41.0	29.0
CO	0.0	1.5	23.0	19.5
CT	6.0	9.5	3.0	0.0
FL	3.0	2.0	28.5	29.5
GA	1.5	1.0	17.0	17.0
HI	8.5	7.0	50.0	45.0
IL	1.5	4.5	29.0	35.5
IN	1.0	0.0	34.0	34.0
IA	2.5	4.5	35.0	34.5
ME	0.0	0.0	0.0	0.0
MD	0.0	8.5	26.5	31.0
MI	1.5	3.0	30.0	32.0
MN	4.0	2.5	30.5	26.0
MS	0.0	0.0	12.0	11.0
MO	1.5	2.0	17.0	20.0
NE	8.0	8.0	23.5	20.5
NY	0.0	3.0	7.0	1.0
NC	1.0	0.0	10.0	8.5
OH	5.0	3.0	26.5	25.0
OK	0.5	0.0	7.5	5.5
OR	4.5	1.5	30.0	38.5
PA	2.0	2.5	19.0	19.0
SC	0.0	4.5	24.0	27.0
SD	3.0	16.5	22.0	24.5
TX	0.0	0.5	24.5	21.5
VA	7.5	0.0	15.0	13.0
WA	1.0	4.5	43.5	42.0
WI	0.0	4.0	33.0	35.0
30 Sts	2.2	2.5	24.5	23.3
Oth Sts ²	1.8	3.0	25.1	24.3
US	2.2	2.6	24.6	23.4

¹ As of first of month.

² Estimates for individual States are not available.

**Hatchery Production: Eggs in Incubators, Chicks Hatched,
and Placements by Type, United States, March-April 2003-04**

Item	2003	2004	2004 as % of 2003
	<i>1,000</i>	<i>1,000</i>	<i>Percent</i>
Egg-Type			
Eggs in Incubators on Apr 1	34,880	33,872	97
Chicks Hatched During Mar	36,775	37,530	102
Chicks Hatched Jan thru Mar	100,806	104,958	104
Pullets Hatched During Mar for Intended Placements in Hatchery Supply Flocks 7-18 Month Earlier ¹	319 2,886	401 2,927	126 101
Broiler-Type			
Eggs in Incubators on Apr 1	638,507	652,526	102
Chicks Hatched During Mar	774,354	791,149	102
Chicks Hatched Jan thru Mar	2,227,577	2,293,055	103
Pullets Hatched During Mar for Intended Placements in Hatchery Supply Flocks 7-15 Months Earlier ²	7,038 62,559	6,815 61,719	97 99

¹ 2004 includes pullet chicks hatched Sep 2002 through Aug 2003.

² 2004 includes pullet chicks hatched Dec 2002 through Aug 2003.

**Egg-Type Eggs in Incubators: By Region and United States,
April 1, 2003-04**

Geographic Division	2003	2004	2004 as % of 2003
	<i>1,000</i>	<i>1,000</i>	<i>Percent</i>
North Atlantic	5,056	6,354	126
E North Central	8,215	7,005	85
W North Central	7,735	7,433	96
South Atlantic	2,883	2,464	85
South Central	5,767	5,684	99
West	5,224	4,932	94
US	34,880	33,872	97

Regional Listing:

North Atlantic = CT, ME, MA, NH, NJ, NY, PA, RI, VT.

E North Central = IL, IN, MI, OH, WI.

W North Central = IA, KS, MN, MO, NE, ND, SD.

South Atlantic = DE, FL, GA, MD, NC, SC, VA, WV.

South Central = AL, AR, KY, LA, MS, OK, TN, TX.

West = AK, AZ, CA, CO, HI, ID, MT, NM, NV, OR, UT, WA, WY.

**Egg-Type Chicks Hatched: By State and United States,
March 2003-04**

State	March			Jan-Mar		
	2003	2004	2004 as % of 2003	2003	2004	2004 as % of 2003
	<i>1,000</i>	<i>1,000</i>	<i>Percent</i>	<i>1,000</i>	<i>1,000</i>	<i>Percent</i>
AR	730	740	101	2,350	2,502	106
FL	571	608	106	1,856	1,932	104
GA	2,450	2,385	97	7,179	7,231	101
IN	4,878	4,980	102	14,344	14,970	104
IA	5,915	6,730	114	16,418	18,423	112
MN	1,451	809	56	4,352	3,031	70
PA	4,012	5,261	131	12,074	15,045	125
Oth Sts ¹	16,768	16,017	96	42,233	41,824	99
US	36,775	37,530	102	100,806	104,958	104

¹ Not published separately to avoid disclosing data for individual operations.

Egg-Type Chicks Hatched: By Month, United States, 2002-04

Month	By Months				Cumulative			
	2002	2003	2004	2004 as % of 2003	2002	2003	2004	2004 as % of 2003
	<i>1,000</i>	<i>1,000</i>	<i>1,000</i>	<i>Percent</i>	<i>1,000</i>	<i>1,000</i>	<i>1,000</i>	<i>Percent</i>
Jan	35,655	33,521	35,350	105	35,655	33,521	35,350	105
Feb	34,473	30,510	32,078	105	70,128	64,031	67,428	105
Mar	36,985	36,775	37,530	102	107,113	100,806	104,958	104
Apr	38,096	37,804			145,209	138,610		
May	38,760	37,631			183,969	176,241		
Jun	35,144	36,602			219,113	212,843		
Jul	35,581	35,566			254,694	248,409		
Aug	35,689	33,199			290,383	281,608		
Sep	35,742	35,763			326,125	317,371		
Oct	32,157	34,812			358,282	352,183		
Nov	31,154	30,241			389,436	382,424		
Dec	32,113	33,645			421,549	416,069		

**Intended Placements: Egg-Type Pullet Chicks for Hatchery Supply
Flocks by Month and Total, United States, 2002-04¹**

Month	Pullet Chicks Hatched			2004 as % of 2003	Cumulative Potential Placements Relative to Current Supply Flocks 7-18 Months Earlier ²		
	2002	2003	2004		2002	2003	2004
	<i>1,000</i>	<i>1,000</i>	<i>1,000</i>	<i>Percent</i>	<i>1,000</i>	<i>1,000</i>	<i>1,000</i>
Jan	228	210	164	78	3,158	2,974	3,012
Feb	247	225	285	127	3,205	2,916	2,960
Mar	237	319	401	126	3,239	2,886	2,927
Apr	295	280			3,225	2,944	2,923
May	319	289			3,134	2,980	3,047
Jun	221	309			3,087	2,946	3,139
Jul	282	230			3,048	2,927	3,198
Aug	221	188			3,040	2,909	3,152
Sep	277	273			3,073	2,887	3,212
Oct	186	310			3,026	2,969	3,298
Nov	227	319			3,010	2,954	
Dec	187	246			3,014	2,924	
Total	2,927	3,198					

¹ Reported by leading breeders. Coverage may not be 100 percent. Includes expected pullet chicks from eggs sold during the preceding month at the rate of 125 pullet chicks per 30 dozen case of eggs.

² For March 2004, includes breeder pullet chicks hatched Sep 2002 through Aug 2003. The 7-18 months represent the first laying cycle. Molting and additional laying cycles will increase the cumulative potential placements.

**Broiler-Type Eggs in Incubators: By Region
and United States, April 1, 2003-04**

Geographic Division	2003	2004	2004 as % of 2003
	<i>1,000</i>	<i>1,000</i>	<i>Percent</i>
North Atlantic	11,823	12,451	105
E North Central	7,785	8,091	104
W North Central	22,141	24,179	109
South Atlantic	237,351	233,534	98
South Central	334,317	349,100	104
West	25,090	25,171	100
US	638,507	652,526	102

**Broiler-Type Chicks Hatched: By State
and United States, March 2003-04**

State	March			Jan-Mar		
	2003	2004	2004 as % of 2003	2003	2004	2004 as % of 2003
	<i>1,000</i>	<i>1,000</i>	<i>Percent</i>	<i>1,000</i>	<i>1,000</i>	<i>Percent</i>
AL	104,146	110,915	106	298,189	321,807	108
AR	111,793	113,525	102	324,736	332,302	102
DE	12,621	14,035	111	36,999	40,351	109
FL	5,899	4,939	84	16,879	14,548	86
GA	115,864	121,429	105	329,463	354,770	108
KY	24,339	26,042	107	70,252	72,935	104
LA	14,055	13,873	99	39,891	39,822	100
MD	34,248	31,379	92	101,482	92,820	91
MS	70,801	72,111	102	204,648	210,707	103
NC	67,642	67,532	100	192,885	192,410	100
OK	23,639	23,805	97	69,784	67,471	97
PA	12,085	13,039	108	35,741	37,699	105
SC	17,287	13,287	77	49,955	38,791	78
TX	54,589	54,822	100	157,848	158,208	100
VA	24,632	23,684	96	70,094	68,461	98
CA, MO, TN, & WV	60,322	65,098	108	170,043	184,761	109
19 Sts ¹	753,962	769,515	102	2,166,714	2,227,863	103
Oth Sts ²	20,392	21,634	106	60,863	65,192	107
US	774,354	791,149	102	2,227,577	2,293,055	103

¹ States in the weekly hatchery production estimating program.

² Not published separately to avoid disclosing data for individual operations.

Broiler-Type Chicks Hatched: By Month, United States, 2002-04

Month	By Months				Cumulative			
	2002	2003	2004	2004 as % of 2003	2002	2003	2004	2004 as % of 2003
	<i>1,000</i>	<i>1,000</i>	<i>1,000</i>	<i>Percent</i>	<i>1,000</i>	<i>1,000</i>	<i>1,000</i>	<i>Percent</i>
Jan	776,961	759,674	773,970	102	776,961	759,674	773,970	102
Feb	703,323	693,549	727,936	105	1,480,284	1,453,223	1,501,906	103
Mar	791,093	774,354	791,149	102	2,271,377	2,227,577	2,293,055	103
Apr	765,457	760,638			3,036,834	2,988,215		
May	799,288	792,813			3,836,122	3,781,028		
Jun	776,343	774,679			4,612,465	4,555,707		
Jul	781,701	777,838			5,394,166	5,333,545		
Aug	780,030	784,037			6,174,196	6,117,582		
Sep	740,388	739,481			6,914,584	6,857,063		
Oct	720,564	734,961			7,635,148	7,592,024		
Nov	690,061	707,627			8,325,209	8,299,651		
Dec	753,883	780,094			9,079,092	9,079,745		

**Intended Placements: Broiler-Type Pullet Chicks for Hatchery
Supply Flocks by Month and Total, 2002-04 ¹**

Month	Pullet Chicks Hatched			2004 as % of 2003	Cumulative Potential Placements Relative to Current Supply Flocks 7-15 Months Earlier ²		
	2002	2003	2004		2002	2003	2004
	<i>1,000</i>	<i>1,000</i>	<i>1,000</i>	<i>Percent</i>	<i>1,000</i>	<i>1,000</i>	<i>1,000</i>
US Place- ments							
Jan	6,264	6,269	6,811	109	60,750	62,473	60,450
Feb	7,275	6,659	7,340	110	60,382	62,371	61,256
Mar	6,775	7,038	6,815	97	60,771	62,559	61,719
Apr	6,814	6,735			60,989	62,658	61,898
May	7,597	7,323			61,008	62,659	61,941
Jun	7,206	6,748			61,521	62,322	62,228
Jul	6,602	7,071			61,346	62,022	62,168
Aug	7,449	7,401			61,212	61,477	62,244
Sep	6,676	6,654			61,370	60,539	62,261
Oct	6,265	6,312			61,323	60,371	62,328
Nov	6,938	6,946			61,811	60,504	
Dec	6,475	6,978			61,914	60,378	
Annual Total	82,336	82,134					
Total Place- ments ³							
Jan	7,415	7,388	7,812	106			
Feb	8,491	8,094	8,251	102			
Mar	7,997	8,549	7,801	91			
Apr	8,119	8,062					
May	8,982	8,604					
Jun	8,802	8,341					
Jul	8,083	8,555					
Aug	8,913	8,756					
Sep	8,002	8,338					
Oct	7,438	7,695					
Nov	8,202	8,246					
Dec	8,016	8,185					
Annual Total	98,460	98,813					

¹ Reported by leading breeders. Coverage may not be 100 percent. Includes expected pullet chicks from eggs sold during the preceding month at the rate of 125 pullet chicks per 30 dozen case of eggs.

² For Mar 2004, includes breeder pullet chicks hatched Dec 2002 through Aug 2003.

³ U.S. production of intended placements worldwide.

Procedures and Reliability

Data Sources: Primary data for the "**Chickens and Eggs**" report are from weekly and/or monthly questionnaires sent to producers. An attempt is made to collect information for layer and egg estimates from each known contractor and independent producer who has over 30,000 table egg layers. Coverage for operations with less than 30,000 table egg layers are estimated each month based on data reported in December. Approximately 900 contractors, independent egg producers, and started pullet operations are contacted each month. All known hatcheries, approximately 330, are contacted for information on a weekly and/or monthly basis.

Revisions: The previous month's estimates are subject to revision if late reports or corrected data indicates a different level. Additionally, revisions needed after the monthly report will be made at the end of the marketing year and published in the annual summaries of "**Chickens and Eggs Summary**" and "**Hatchery Production**".

Procedures and Reliability: Operations are mailed a questionnaire and given adequate time to respond by mail. Those that do not respond are phoned. Great care is exercised to ensure that all operations are accounted for during each survey period. However, there are usually missing reports that must be accounted for in the estimates.

Sound statistical methodology is employed to derive estimates from the reported data. All data are checked for unusual values. All operations' data are compared to their own past operating profiles and also to trends from other operations. Data for missing operations are estimated based on similar operations or historical data. Survey data are subject to non-sampling errors such as omissions and mistakes in reporting and in processing. While these errors cannot be measured directly, they are minimized by reviewing all data for consistency and reasonableness.

Egg-type chicks hatched are comprised of all chicks of egg-type domesticated breeds including males and chicks destined for hatchery supply flocks and research purposes. The relationship of chicks hatched to chicken inventory and poultry marketings is carefully monitored. The disposition of egg-type chicks hatched prior to placement into the laying flock can vary significantly, which can make comparisons to changes in layer inventory inconsistent over time.

Intended placement data reported by leading breeders include pullet chicks expected from eggs sold the preceding month. The breeders in this report account for a large percentage of replacement pullets for hatchery supply flocks. Production of replacement pullets by these breeders indicates the number of pullets available to hatchery supply flocks several months before the pullets will actually move into the flocks. "Hatchery Supply Flocks" include all generations of layers which could lay eggs to supply a hatchery. This includes the generations of parents, grandparents, great-grandparents, pedigree, etc. Also included are research flocks, vaccine flocks, and specific pathogen-free flocks. The broiler cumulative potential placements are a moving total of the intended placements 7-15 months earlier. The egg-type cumulative potential placements of 7-18 months represent the first laying cycle. Molting and additional laying cycles will increase the cumulative potential placements of egg-type hatching flocks.

The next *Chickens and Eggs* report will be released at 3 p.m. ET on May 21, 2004.

The United States Department of Agriculture (USDA) prohibits discrimination in all its programs on the basis of race, color, national origin, gender, religion, age, disability, political beliefs, sexual orientation, and marital or family status. (Not all prohibited bases apply to all programs.) Persons with disabilities who require alternative means for communication of program information (braille, large print, audiotape, etc.) should contact the USDA's TARGET Center at 202-720-2600 (voice and TDD).

To file a complaint of discrimination, write USDA, Director, Office of Civil Rights, Room 326-W, Whitten Building, 1400 Independence Avenue, SW, Washington, D.C., 20250-9410, or call 202-720-5964 (voice or TDD). USDA is an equal opportunity provider and employer.

ACCESS TO REPORTS!!

For your convenience, there are several ways to obtain NASS reports, data products, and services:

INTERNET ACCESS

All NASS reports are available free of charge on the worldwide Internet. For access, connect to the Internet and go to the NASS Home Page at: www.usda.gov/nass/. Select "Today's Reports" or Publications and then Reports Calendar or Publications and then Search, by Title or Subject.

E-MAIL SUBSCRIPTION

All NASS reports are available by subscription free of charge direct to your e-mail address. Starting with the NASS Home Page at www.usda.gov/nass/, click on **Publications**, then click on the **Subscribe by E-mail** button which takes you to the page describing e-mail delivery of reports. Finally, click on **Go to the Subscription Page** and follow the instructions.

PRINTED REPORTS OR DATA PRODUCTS

CALL OUR TOLL-FREE ORDER DESK: 800-999-6779 (U.S. and Canada)
Other areas, please call 703-605-6220 FAX: 703-605-6900
(Visa, MasterCard, check, or money order acceptable for payment.)

ASSISTANCE

For **assistance** with general agricultural statistics or further information about NASS or its products or services, contact the **Agricultural Statistics Hotline** at **800-727-9540**, 7:30 a.m. to 4:00 p.m. ET, or e-mail: nass@nass.usda.gov.
