

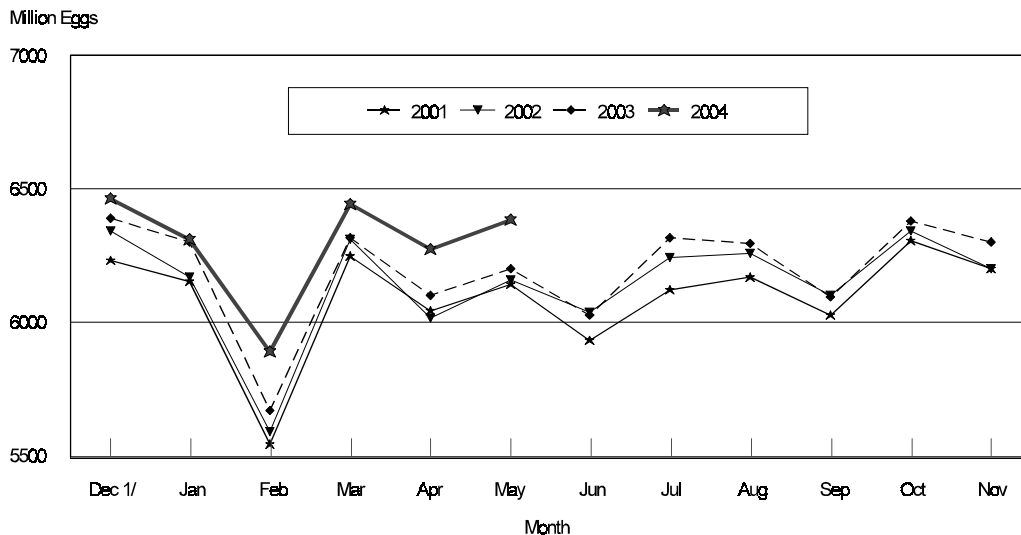
Released June 22, 2004, by the National Agricultural Statistics Service (NASS), Agricultural Statistics Board, U.S. Department of Agriculture. For information on *Chickens and Eggs* call Tom Kruchten at (202) 690-4870, for "Hatch" call Jody Roberts at (202) 690-8632, office hours 7:30 a.m. to 4:00 p.m. ET.

May Egg Production Up 2 Percent

U.S. egg production totaled 7.50 billion during May 2004, up 2 percent from last year. Production included 6.39 billion table eggs, and 1.11 billion hatching eggs, of which 1.05 billion were broiler-type and 59.0 million were egg-type. The total number of layers during May 2004 averaged 342 million, up 2 percent from a year earlier. May egg production per 100 layers was 2,192 eggs, up 1 percent from May 2003.

May 2004 contained 21 weekdays, 5 Saturdays and 1 holiday compared to May 2003 which contained 22 weekdays, 5 Saturdays and 1 holiday .

Table Egg Production By Months
United States, 2001 - 2004



1/ Previous Year

All layers in the U.S. on June 1, 2004, totaled 343 million, up 2 percent from a year ago. The 343 million layers consisted of 283 million layers producing table or commercial type eggs, 57.4 million layers producing broiler-type hatching eggs, and 2.41 million layers producing egg-type hatching eggs. Rate of lay per day on June 1, 2004, averaged 70.3 eggs per 100 layers, up 1 percent from a year ago.

Laying flocks in the 30 major egg producing States produced 7.00 billion eggs during May 2004, up 2 percent from a year ago. The average number of layers during May, at 319 million, was up 2 percent from a year ago.

Individual State estimates are available for the 30 major egg producing States. These States are listed on page 8 of this release and account for approximately 94 percent of the total U.S. egg production. Production for the other States are grouped into an "Other States" category and combined with the 30 States published individually to obtain a U.S. estimate.

Egg-Type Chicks Hatched Up 3 Percent

Egg-type chicks hatched during May totaled 38.6 million, up 3 percent from May 2003. Eggs in incubators totaled 34.4 million on June 1, 2004, up 2 percent from a year ago.

Domestic placements of egg-type pullet chicks for future hatchery supply flocks by leading breeders totaled 255,000 during May 2004, down 12 percent from May 2003.

Broiler Hatch Up 2 Percent

The May 2004 hatch of broiler-type chicks, at 810 million, was up 2 percent from May of the previous year. There were 660 million eggs in incubators on June 1, 2004, up 1 percent from a year earlier.

Leading breeders placed 7.5 million broiler-type pullet chicks for future domestic hatchery supply flocks during May 2004, up 2 percent from May 2003.

**All Layers: Average Number on Hand During the Month,
United States, 2001-04**

Month	2001	2002	2003	2004
	<i>1,000 Layers</i>	<i>1,000 Layers</i>	<i>1,000 Layers</i>	<i>1,000 Layers</i>
Dec ¹	333,488	341,243	340,316	338,243
Jan	334,982	340,885	340,910	337,749
Feb	337,008	339,529	340,575	338,942
Mar	338,078	339,434	339,885	341,000
Apr	338,414	338,809	338,182	341,912
May	336,454	337,566	336,164	342,085
Jun	334,237	337,339	334,789	
Jul	333,571	337,849	334,179	
Aug	334,156	338,397	334,332	
Sep	336,651	339,511	334,198	
Oct	338,996	340,461	335,333	
Nov	339,919	340,490	338,283	

¹ December preceding year.

**Eggs: Production During the Month by Type,
United States, 2003-04**

Month	Total Eggs		Table Eggs		Hatching Eggs	
	2003	2004	2003	2004	2003	2004
	<i>Million Eggs</i>	<i>Million Eggs</i>	<i>Million Eggs</i>	<i>Million Eggs</i>	<i>Million Eggs</i>	<i>Million Eggs</i>
Dec ¹	7,451	7,520	6,392	6,466	1,058	1,055
Jan	7,390	7,371	6,301	6,315	1,088	1,056
Feb	6,665	6,890	5,673	5,890	991	1,001
Mar	7,424	7,532	6,316	6,446	1,108	1,087
Apr	7,187	7,343	6,103	6,276	1,084	1,067
May	7,327	7,499	6,200	6,386	1,127	1,113
Jun	7,105		6,028		1,077	
Jul	7,403		6,316		1,086	
Aug	7,367		6,296		1,070	
Sep	7,112		6,095		1,017	
Oct	7,439		6,381		1,058	
Nov	7,326		6,301		1,025	
During Year	87,196	44,155	74,404	37,779	12,789	6,379

¹ December preceding year.

**Layers and Eggs: Layers on Hand and Eggs Produced by Type,
and Forced Molt, United States, April-May 2003-04**

Item	Unit	2003	2004	2004 as % of 2003
Layers During Apr	1,000			
All Layers		338,182	341,912	101
Table Egg Type		277,986	282,530	102
Hatching Egg Type		60,196	59,382	99
Broiler-Type Hatching		57,450	56,904	99
Egg-Type Hatching		2,746	2,478	90
Eggs per 100 Layers During Apr	Number			
All Layers		2,125	2,148	101
Table Egg Type		2,195	2,221	101
Hatching Egg Type		1,801	1,797	100
Broiler-Type Hatching		1,774	1,773	100
Egg-Type Hatching		2,367	2,341	99
Eggs Produced During Apr	Million			
All Layers		7,187	7,343	102
Table Egg Type		6,103	6,276	103
Hatching Egg Type		1,084	1,067	98
Broiler-Type Hatching		1,019	1,009	99
Egg-Type Hatching		65	58	89
Layers on May 1	1,000			
All Layers		336,678	341,604	101
Table Egg Type		276,240	281,951	102
Hatching Egg Type		60,438	59,653	99
Broiler-Type Hatching		57,620	57,168	99
Egg-Type Hatching		2,818	2,485	88
Eggs per 100 Layers on May 1	Number			
All Layers		70.5	71.0	101
Table Egg Type		72.9	73.3	101
Hatching Egg Type		60.0	60.2	100
Broiler-Type Hatching		59.1	59.3	100
Egg-Type Hatching		77.6	79.2	102
Forced Molt Layers on May 1	Percent			
Percent Being Molted		4.3	4.7	109
Percent with Molt Completed		23.5	22.3	95
Layers Sold for Slaughter During Apr	1,000	16,266	13,797	85
Layers Rendered, Died, Destroyed, Composted or Disappeared For Any Reason During Apr	1,000	7,060	6,097	86
Pullets Less Than 20 Weeks of Age, May 1	1,000	99,803	99,974	100
Pullets Added During Apr ¹	1,000	25,616	25,206	98

¹ Pullet chicks one day old added to pullet flocks.

**Layers and Eggs: Layers on Hand and Eggs Produced by Type,
and Forced Molt, United States, May-June 2003-04**

Item	Unit	2003 ¹	2004	2004 as % of 2003
Layers During May	1,000			
All Layers		336,164	342,085	102
Table Egg Type		275,823	282,333	102
Hatching Egg Type		60,341	59,752	99
Broiler-Type Hatching		57,556	57,303	100
Egg-Type Hatching		2,785	2,449	88
Eggs per 100 Layers During May	Number			
All Layers		2,180	2,192	101
Table Egg Type		2,248	2,262	101
Hatching Egg Type		1,868	1,863	100
Broiler-Type Hatching		1,843	1,839	100
Egg-Type Hatching		2,370	2,409	102
Eggs Produced During May	Million			
All Layers		7,327	7,499	102
Table Egg Type		6,200	6,386	103
Hatching Egg Type		1,127	1,113	99
Broiler-Type Hatching		1,061	1,054	99
Egg-Type Hatching		66	59	89
Layers on Jun 1	1,000			
All Layers		335,611	342,532	102
Table Egg Type		275,385	282,697	103
Hatching Egg Type		60,226	59,835	99
Broiler-Type Hatching		57,482	57,428	100
Egg-Type Hatching		2,744	2,407	88
Eggs per 100 Layers on Jun 1	Number			
All Layers		69.9	70.3	101
Table Egg Type		72.0	72.6	101
Hatching Egg Type		60.2	59.6	99
Broiler-Type Hatching		59.5	58.9	99
Egg-Type Hatching		75.5	77.3	102
Forced Molt Layers, Jun 1	Percent			
Percent Being Molted		4.2	4.8	114
Percent with Molt Completed		23.4	23.3	100
Layers Sold for Slaughter During May	1,000	15,786	13,796	87
Layers Rendered, Died, Destroyed, Composted or Disappeared For Any Reason During May	1,000	6,892	6,067	88
Pullets Less Than 20 Weeks of Age, Jun 1	1,000	102,181	102,210	100
Pullets Added During May ²	1,000	27,450	25,484	93

¹ Revised.

² Pullet chicks one day old added to pullet flocks.

**Layers and Eggs: Layers on Hand and Eggs Produced by Type, and Forced
Molt, 30 Selected States, April-May, 2003-04¹**

Item	Unit	2003	2004	2004 as % of 2003
Layers During Apr	1,000			
All Layers		315,542	318,883	101
Table Egg Type		260,270	264,529	102
Hatching Egg Type		55,272	54,354	98
Broiler-Type Hatching		52,613	52,016	99
Egg-Type Hatching		2,659	2,338	88
Eggs per 100 Layers During Apr	Number			
All Layers		2,126	2,149	101
Table Egg Type		2,195	2,221	101
Hatching Egg Type		1,802	1,801	100
Broiler-Type Hatching		1,773	1,778	100
Egg-Type Hatching		2,369	2,310	98
Eggs Produced During Apr	Million			
All Layers		6,708	6,853	102
Table Egg Type		5,712	5,874	103
Hatching Egg Type		996	979	98
Broiler-Type Hatching		933	925	99
Egg-Type Hatching		63	54	86
Layers on May 1	1,000			
All Layers		314,311	318,617	101
Table Egg Type		258,771	264,086	102
Hatching Egg Type		55,540	54,531	98
Broiler-Type Hatching		52,809	52,182	99
Egg-Type Hatching		2,731	2,349	86
Eggs per 100 Layers on May 1	Number			
All Layers		70.6	71.1	101
Table Egg Type		72.9	73.3	101
Hatching Egg Type		59.9	60.1	100
Broiler-Type Hatching		59.0	59.3	101
Egg-Type Hatching		77.6	79.0	102
Forced Molt Layers on May 1	Percent			
Percent Being Molted		4.1	4.5	110
Percent with Molt Completed		23.6	22.1	94
Layers Sold for Slaughter During Apr	1,000	15,087	12,655	84
Layers Rendered, Died, Destroyed, Composted or Disappeared For Any Reason During Apr	1,000	6,762	5,591	83
Pullets Less Than 20 Weeks of Age, May 1	1,000	93,049	92,508	99
Pullets Added During Apr ²	1,000	24,234	22,537	93

¹ The 30 States are listed in the table on page 8.

² Pullet chicks one day old added to pullet flocks.

**Layers and Eggs: Layers on Hand and Eggs Produced by Type, and Forced
Molt, 30 Selected States, May-June, 2003-04 ¹**

Item	Unit	2003 ²	2004	2004 as % of 2003
Layers During May	1,000			
All Layers		313,778	319,240	102
Table Egg Type		258,350	264,575	102
Hatching Egg Type		55,428	54,665	99
Broiler-Type Hatching		52,734	52,352	99
Egg-Type Hatching		2,694	2,313	86
Eggs per 100 Layers During May	1,000			
All Layers		2,179	2,193	101
Table Egg Type		2,246	2,262	101
Hatching Egg Type		1,865	1,859	100
Broiler-Type Hatching		1,839	1,834	100
Egg-Type Hatching		2,376	2,421	102
Eggs Produced During May	Million			
All Layers		6,837	7,002	102
Table Egg Type		5,803	5,986	103
Hatching Egg Type		1,034	1,016	98
Broiler-Type Hatching		970	960	99
Egg-Type Hatching		64	56	88
Layers on Jun 1	1,000			
All Layers		313,219	319,836	102
Table Egg Type		257,915	265,051	103
Hatching Egg Type		55,304	54,785	99
Broiler-Type Hatching		52,654	52,514	100
Egg-Type Hatching		2,650	2,271	86
Eggs per 100 Layers on Jun 1	Number			
All Layers		69.9	70.4	101
Table Egg Type		71.9	72.6	101
Hatching Egg Type		60.2	59.5	99
Broiler-Type Hatching		59.4	58.7	99
Egg-Type Hatching		75.6	76.9	102
Forced Molt Layers, Jun 1	Percent			
Percent Being Molted		4.1	4.5	110
Percent with Molt Completed		23.3	23.3	100
Layers Sold for Slaughter During May	1,000	14,782	13,047	88
Layers Rendered, Died, Destroyed, Composted or Disappeared For Any Reason During May	1,000	6,481	5,414	84
Pullets Less Than 20 Weeks of Age, Jun 1	1,000	95,409	94,837	99
Pullets Added During May ³	1,000	25,669	23,947	93

¹ The 30 States are listed in the table on page 8.

² Revised.

³ Pullet chicks one day old added to pullet flocks.

**Layers and Eggs: Layers on Hand and Eggs Produced by State
and United States, During April 2003-04**

State	Table Egg Layers in Flocks 30,000 and Above		All Layers ¹		Eggs per 100 for All Layers ¹	
	2003	2004	2003	2004	2003	2004
	<i>1,000</i>	<i>1,000</i>	<i>1,000</i>	<i>1,000</i>	<i>Number</i>	<i>Number</i>
AL	2,216	1,985	9,739	9,327	1,869	1,833
AR	4,671	4,183	15,790	15,127	1,824	1,917
CA	19,713	19,846	20,260	20,371	2,108	2,135
CO	3,327	3,328	3,850	3,830	2,338	2,376
CT	2,864	2,801	2,921	2,855	2,225	2,382
FL	10,040	10,942	10,577	11,456	2,165	2,322
GA	11,013	11,065	20,516	20,233	2,042	2,031
HI	473	465	514	505	1,946	2,040
IL	3,173	3,607	3,401	3,829	2,264	2,246
IN	22,269	22,716	22,987	23,512	2,188	2,203
IA	38,174	42,056	38,954	42,730	2,167	2,183
ME	4,182	3,970	4,232	4,010	2,292	2,294
MD	2,636	3,000	2,822	3,093	2,339	2,231
MI	6,683	7,135	6,934	7,386	2,192	2,261
MN	10,698	10,328	11,306	10,841	2,229	2,269
MS	1,840	1,867	6,806	7,022	1,939	1,908
MO	5,425	5,715	6,885	7,055	2,222	2,112
NE	11,670	11,654	11,770	11,729	2,141	2,208
NY	3,439	3,650	3,733	3,988	2,357	2,357
NC	3,265	3,399	10,948	11,054	1,900	1,900
OH	29,183	27,384	29,687	27,874	2,149	2,174
OK	2,009	1,881	4,149	4,057	1,880	1,898
OR	2,459	2,780	2,628	2,969	2,169	2,257
PA	22,984	22,183	24,752	23,949	2,277	2,238
SC	4,275	4,131	5,421	5,161	2,121	2,073
SD	2,582	3,355	2,782	3,555	2,193	2,278
TX	14,328	14,243	18,799	18,744	2,133	2,193
VA	1,173	1,252	3,278	3,300	1,922	1,909
WA	4,871	4,831	4,952	4,901	2,100	2,244
WI	3,641	3,882	4,149	4,420	2,266	2,172
30 Sts	255,276	259,634	315,542	318,883	2,126	2,149
Oth Sts ²	16,575	16,808	22,640	23,029	2,116	2,128
US	271,851	276,442	338,182	341,912	2,125	2,148

¹ Includes all layers and eggs produced in both table egg and hatching egg flocks regardless of size.

² Estimates for individual States are not available.

**Layers and Eggs: Layers on Hand and Eggs Produced by State
and United States, During May 2003-04**

State	Table Egg Layers in Flocks 30,000 and Above		All Layers ¹		Eggs per 100 for All Layers ¹	
	2003	2004	2003	2004	2003	2004
	<i>1,000</i>	<i>1,000</i>	<i>1,000</i>	<i>1,000</i>	<i>Number</i>	<i>Number</i>
AL	2,050	1,863	9,591	9,334	1,950	1,907
AR	4,502	4,209	15,489	15,395	1,872	1,949
CA	19,830	19,723	20,392	20,274	2,118	2,205
CO	3,346	3,376	3,848	3,876	2,417	2,348
CT	2,813	2,844	2,869	2,901	2,300	2,447
FL	9,975	10,854	10,506	11,376	2,170	2,294
GA	10,989	10,978	20,553	20,106	2,082	2,069
HI	446	463	487	502	2,012	2,032
IL	3,183	3,557	3,415	3,778	2,255	2,065
IN	22,051	22,623	22,756	23,397	2,268	2,282
IA	37,561	42,877	38,362	43,567	2,203	2,220
ME	4,148	3,970	4,199	4,010	2,358	2,369
MD	2,596	2,971	2,813	3,082	2,311	2,401
MI	6,870	7,047	7,121	7,298	2,247	2,357
MN	10,525	10,203	11,130	10,731	2,300	2,311
MS	1,846	1,827	6,889	6,969	1,989	1,923
MO	5,375	5,539	6,826	6,848	2,300	2,205
NE	11,655	11,535	11,755	11,610	2,254	2,291
NY	3,375	3,582	3,672	3,918	2,478	2,450
NC	3,289	3,394	11,055	11,030	1,990	1,967
OH	28,878	27,839	29,388	28,327	2,188	2,199
OK	1,968	1,874	4,114	4,077	1,920	1,913
OR	2,551	2,758	2,730	2,940	2,308	2,313
PA	22,976	22,321	24,769	24,082	2,320	2,300
SC	4,180	4,157	5,351	5,226	2,149	2,028
SD	2,696	3,344	2,896	3,544	2,279	2,342
TX	14,066	13,886	18,462	18,319	2,194	2,222
VA	1,201	1,272	3,311	3,327	1,993	1,894
WA	4,834	4,842	4,915	4,912	2,177	2,382
WI	3,600	3,953	4,114	4,484	2,333	2,163
30 Sts	253,375	259,681	313,778	319,240	2,179	2,193
Oth Sts ²	16,332	16,565	22,386	22,845	2,189	2,176
US	269,707	276,246	336,164	342,085	2,180	2,192

¹ Includes all layers and eggs produced in both table egg and hatching egg flocks regardless of size.

² Estimates for individual States are not available.

**Egg Production: By Type, State, and United States,
April 2003-04**

State	Total Production		Table Eggs ¹		Hatching Eggs ¹	
	2003	2004	2003	2004	2003	2004
	<i>Million Eggs</i>	<i>Million Eggs</i>	<i>Million Eggs</i>	<i>Million Eggs</i>	<i>Million Eggs</i>	<i>Million Eggs</i>
AL	182	171	49	44	133	127
AR	288	290	100	99	188	191
CA	427	435				
CO	90	91				
CT	65	68				
FL	229	266	220	257	9	9
GA	419	411	247	244	172	167
HI	10.0	10.3	10.0	10.3	0	0
IL	77	86	74	83	3	3
IN	503	518	490	505	13	13
IA	844	933				
ME	97	92				
MD	66	69	63	68	3	1
MI	152	167				
MN	252	246	244	239	8	7
MS	132	134	42	41	90	93
MO	153	149				
NE	252	259	252	259	0	0
NY	88	94				
NC	208	210	76	80	132	130
OH	638	606				
OK	78	77	45	43	33	34
OR	57	67	56	65	1	2
PA	563	536	547	519	16	17
SC	115	107	96	89	19	18
SD	61	81	61	81	0	0
TX	401	411				
VA	63	63	24	27	39	36
WA	104	110				
WI	94	96				
30 Sts	6,708	6,853	5,712	5,874	996	979
Oth Sts ²	479	490	391	402	88	88
US	7,187	7,343	6,103	6,276	1,084	1,067

¹ Data by type of flock not shown for some States to avoid disclosing individual operations.

² Estimates for individual States are not available.

**Egg Production: By Type, State, and United States,
May 2003-04**

State	Total Production		Table Eggs ¹		Hatching Eggs ¹	
	2003	2004	2003	2004	2003	2004
	<i>Million Eggs</i>	<i>Million Eggs</i>	<i>Million Eggs</i>	<i>Million Eggs</i>	<i>Million Eggs</i>	<i>Million Eggs</i>
AL	187	178	48	43	139	135
AR	290	300	95	101	195	199
CA	432	447				
CO	93	91				
CT	66	71				
FL	228	261	219	251	9	10
GA	428	416	250	242	178	174
HI	9.8	10.2	9.8	10.2	0	0
IL	77	78	74	75	3	3
IN	516	534	503	521	13	13
IA	845	967				
ME	99	95				
MD	65	74	61	72	4	2
MI	160	172				
MN	256	248	247	240	9	8
MS	137	134	43	39	94	95
MO	157	151				
NE	265	266	265	266	0	0
NY	91	96				
NC	220	217	81	81	139	136
OH	643	623				
OK	79	78	45	44	34	34
OR	63	68	61	66	2	2
PA	575	554	558	537	17	17
SC	115	106	95	87	20	19
SD	66	83	66	83	0	0
TX	405	407				
VA	66	63	27	27	39	36
WA	107	117				
WI	96	97				
30 Sts	6,837	7,002	5,803	5,986	1,034	1,016
Oth Sts ²	490	497	397	400	93	97
US	7,327	7,499	6,200	6,386	1,127	1,113

¹ Data by type of flock not shown for some States to avoid disclosing individual operations.

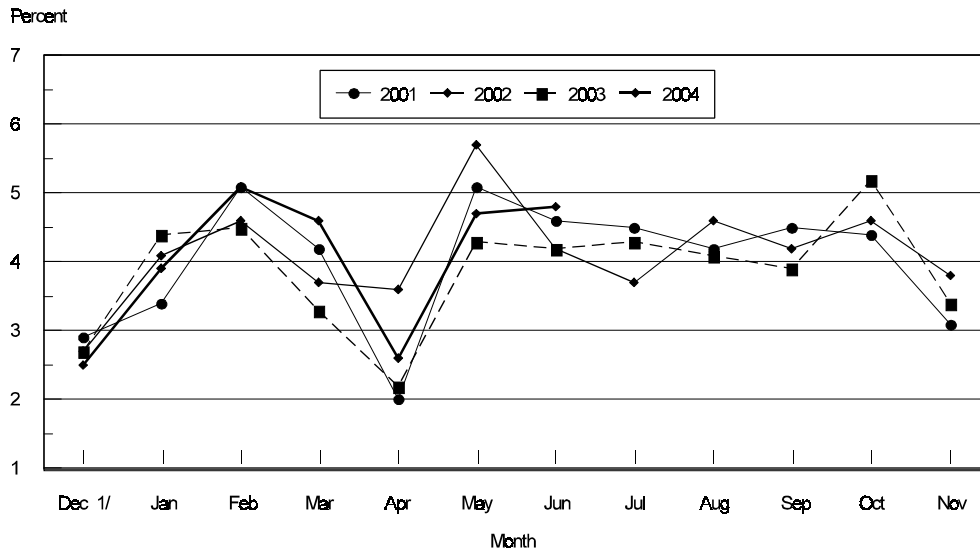
² Estimates for individual States are not available.

**Forced Molt: Percent of All Layers by Month,
United States, 2003-04¹**

Month	Percent Being Molted		Percent with Molt Completed	
	2003	2004	2003	2004
	<i>Percent</i>	<i>Percent</i>	<i>Percent</i>	<i>Percent</i>
Jan	4.4	3.9	23.7	22.4
Feb	4.5	4.9	24.0	22.8
Mar	3.3	4.6	23.7	23.3
Apr	2.2	2.6	24.6	23.5
May	4.3	4.7	23.5	22.3
Jun	4.2	4.8	23.4	23.3
Jul	4.3		23.9	
Aug	4.1		23.5	
Sep	3.9		22.8	
Oct	5.2		23.1	
Nov	3.4		24.1	
Dec	2.5		22.7	

¹ As of first of month.

**All Layers : United States
Percent Being Molted, 2001 - 2004
First of Month**



1/ Previous Year

**Forced Molt: Percent of All Layers by State
and United States, June 2003-04 ¹**

State	Percent Being Molted		Percent with Molt Completed	
	2003	2004	2003	2004
	<i>Percent</i>	<i>Percent</i>	<i>Percent</i>	<i>Percent</i>
AL	0.0	1.5	6.0	2.0
AR	2.0	3.5	8.5	8.5
CA	6.5	5.5	35.5	29.0
CO	3.5	3.0	20.0	23.0
CT	3.5	5.0	7.5	9.0
FL	6.0	7.5	27.5	28.0
GA	6.0	5.5	13.5	16.5
HI	4.0	9.0	57.0	46.5
IL	4.5	16.0	14.5	37.5
IN	1.5	4.0	33.5	32.5
IA	5.0	3.5	35.5	37.5
ME	0.0	0.0	0.0	0.0
MD	10.0	16.0	27.0	12.0
MI	3.0	5.5	27.5	30.5
MN	0.5	3.0	33.0	26.0
MS	5.0	4.0	8.0	10.0
MO	1.5	3.5	13.5	18.0
NE	7.0	1.0	25.0	20.0
NY	0.5	1.5	4.5	2.5
NC	3.0	2.0	8.0	7.5
OH	6.0	4.5	25.0	26.0
OK	0.0	0.0	8.0	5.0
OR	4.0	6.5	28.0	36.0
PA	5.0	4.5	19.0	16.0
SC	0.0	5.5	22.0	30.5
SD	3.0	15.0	22.0	27.0
TX	3.0	5.5	24.5	22.0
VA	3.0	9.0	14.0	11.5
WA	11.5	6.5	43.5	46.0
WI	1.0	5.5	29.5	33.0
30 Sts	4.1	4.5	23.3	23.3
Oth Sts ²	5.7	8.8	25.8	23.0
US	4.2	4.8	23.4	23.3

¹ As of first of month.

² Estimates for individual States are not available.

**Hatchery Production: Eggs in Incubators, Chicks Hatched,
and Placements by Type, United States, May-June 2003-04**

Item	2003	2004	2004 as % of 2003
	<i>1,000</i>	<i>1,000</i>	<i>Percent</i>
Egg-Type			
Eggs in Incubators on Jun 1	33,634	34,395	102
Chicks Hatched During May	37,631	38,631	103
Chicks Hatched Jan thru May	176,241	181,103	103
Pullets Hatched During May for Intended Placements in Hatchery Supply Flocks	289	255	88
7-18 Month Earlier ¹	2,980	3,047	102
Broiler-Type			
Eggs in Incubators on Jun 1	652,394	660,095	101
Chicks Hatched During May	792,813	809,725	102
Chicks Hatched Jan thru May	3,781,028	3,877,232	103
Pullets Hatched During May for Intended Placements in Hatchery Supply Flocks	7,323	7,492	102
7-15 Months Earlier ²	62,659	61,941	99

¹ 2004 includes pullet chicks hatched Nov 2002 through Oct 2003.

² 2004 includes pullet chicks hatched Feb 2003 through Oct 2003.

**Egg-Type Eggs in Incubators: By Region and United States,
June 1, 2003-04**

Geographic Division	2003	2004	2004 as % of 2003
	<i>1,000</i>	<i>1,000</i>	<i>Percent</i>
North Atlantic	4,768	5,974	125
E North Central	7,297	7,577	104
W North Central	7,412	8,271	112
South Atlantic	2,910	2,447	84
South Central	5,193	4,954	95
West	6,054	5,172	85
US	33,634	34,395	102

Regional Listing:

North Atlantic = CT, ME, MA, NH, NJ, NY, PA, RI, VT.

E North Central = IL, IN, MI, OH, WI.

W North Central = IA, KS, MN, MO, NE, ND, SD.

South Atlantic = DE, FL, GA, MD, NC, SC, VA, WV.

South Central = AL, AR, KY, LA, MS, OK, TN, TX.

West = AK, AZ, CA, CO, HI, ID, MT, NM, NV, OR, UT, WA, WY.

**Egg-Type Chicks Hatched: By State and United States,
May 2003-04**

State	May			Jan-May		
	2003	2004	2004 as % of 2003	2003	2004	2004 as % of 2003
	<i>1,000</i>	<i>1,000</i>	<i>Percent</i>	<i>1,000</i>	<i>1,000</i>	<i>Percent</i>
AR	965	987	102	4,010	4,335	108
FL	692	602	87	3,111	3,113	100
GA	2,429	2,377	98	12,037	11,970	99
IN	5,091	4,992	98	24,328	25,137	103
IA	6,561	5,889	90	29,377	30,608	104
MN	1,130	859	76	6,933	4,716	68
PA	4,247	5,251	124	21,061	26,413	125
Oth Sts ¹	16,516	17,674	107	75,384	74,811	99
US	37,631	38,631	103	176,241	181,103	103

¹ Not published separately to avoid disclosing data for individual operations.

Egg-Type Chicks Hatched: By Month, United States, 2002-04

Month	By Months				Cumulative			
	2002	2003	2004	2004 as % of 2003	2002	2003	2004	2004 as % of 2003
	<i>1,000</i>	<i>1,000</i>	<i>1,000</i>	<i>Percent</i>	<i>1,000</i>	<i>1,000</i>	<i>1,000</i>	<i>Percent</i>
Jan	35,655	33,521	35,350	105	35,655	33,521	35,350	105
Feb	34,473	30,510	32,078	105	70,128	64,031	67,428	105
Mar	36,985	36,775	37,530	102	107,113	100,806	104,958	104
Apr	38,096	37,804	37,514	99	145,209	138,610	142,472	103
May	38,760	37,631	38,631	103	183,969	176,241	181,103	103
Jun	35,144	36,602			219,113	212,843		
Jul	35,581	35,566			254,694	248,409		
Aug	35,689	33,199			290,383	281,608		
Sep	35,742	35,763			326,125	317,371		
Oct	32,157	34,812			358,282	352,183		
Nov	31,154	30,241			389,436	382,424		
Dec	32,113	33,645			421,549	416,069		

**Intended Placements: Egg-Type Pullet Chicks for Hatchery Supply
Flocks by Month and Total, United States, 2002-04¹**

Month	Pullet Chicks Hatched			2004 as % of 2003	Cumulative Potential Placements Relative to Current Supply Flocks 7-18 Months Earlier ²		
	2002	2003	2004		2002	2003	2004
	<i>1,000</i>	<i>1,000</i>	<i>1,000</i>	<i>Percent</i>	<i>1,000</i>	<i>1,000</i>	<i>1,000</i>
Jan	228	210	164	78	3,158	2,974	3,012
Feb	247	225	285	127	3,205	2,916	2,960
Mar	237	319	401	126	3,239	2,886	2,927
Apr	295	280	311	111	3,225	2,944	2,923
May	319	289	255	88	3,134	2,980	3,047
Jun	221	309			3,087	2,946	3,139
Jul	282	230			3,048	2,927	3,198
Aug	221	188			3,040	2,909	3,152
Sep	277	273			3,073	2,887	3,212
Oct	186	310			3,026	2,969	3,294
Nov	227	319			3,010	2,954	3,325
Dec	187	246			3,014	2,924	3,291
Total	2,927	3,198					

¹ Reported by leading breeders. Coverage may not be 100 percent. Includes expected pullet chicks from eggs sold during the preceding month at the rate of 125 pullet chicks per 30 dozen case of eggs.

² For May 2004, includes breeder pullet chicks hatched Nov 2002 through Oct 2003. The 7-18 months represent the first laying cycle. Molting and additional laying cycles will increase the cumulative potential placements.

**Broiler-Type Eggs in Incubators: By Region
and United States, June 1, 2003-04**

Geographic Division	2003	2004	2004 as % of 2003
	<i>1,000</i>	<i>1,000</i>	<i>Percent</i>
North Atlantic	12,257	11,845	97
E North Central	8,442	8,342	99
W North Central	22,777	25,018	110
South Atlantic	240,500	235,652	98
South Central	342,849	353,852	103
West	25,569	25,386	99
US	652,394	660,095	101

**Broiler-Type Chicks Hatched: By State
and United States, May 2003-04**

State	May			Jan-May		
	2003	2004	2004 as % of 2003	2003	2004	2004 as % of 2003
	<i>1,000</i>	<i>1,000</i>	<i>Percent</i>	<i>1,000</i>	<i>1,000</i>	<i>Percent</i>
AL	106,392	113,989	107	506,669	544,453	107
AR	112,964	116,834	103	544,618	560,558	103
DE	13,656	13,979	102	63,883	67,657	106
FL	5,587	5,021	90	28,134	24,327	86
GA	117,831	121,245	103	560,108	591,151	106
KY	24,673	26,590	108	118,498	124,469	105
LA	13,739	14,492	105	67,132	67,923	101
MD	35,666	31,999	90	171,707	155,534	91
MS	70,870	73,182	103	344,790	354,492	103
NC	70,083	68,746	98	330,182	327,856	99
OK	23,217	24,853	107	113,744	115,923	102
PA	13,025	13,657	105	61,566	64,506	105
SC	17,065	13,817	81	84,038	65,511	78
TX	55,723	56,847	102	266,081	269,468	101
VA	24,658	24,267	98	118,632	116,492	98
CA, MO, TN, & WV	63,653	66,766	105	293,614	315,298	107
19 Sts ¹	768,802	786,284	102	3,673,396	3,765,618	103
Oth Sts ²	24,011	23,441	98	107,632	111,614	104
US	792,813	809,725	102	3,781,028	3,877,232	103

¹ States in the weekly hatchery production estimating program.

² Not published separately to avoid disclosing data for individual operations.

Broiler-Type Chicks Hatched: By Month, United States, 2002-04

Month	By Months				Cumulative			
	2002	2003	2004	2004 as % of 2003	2002	2003	2004	2004 as % of 2003
	<i>1,000</i>	<i>1,000</i>	<i>1,000</i>	<i>Percent</i>	<i>1,000</i>	<i>1,000</i>	<i>1,000</i>	<i>Percent</i>
Jan	776,961	759,674	773,970	102	776,961	759,674	773,970	102
Feb	703,323	693,549	727,936	105	1,480,284	1,453,223	1,501,906	103
Mar	791,093	774,354	791,149	102	2,271,377	2,227,577	2,293,055	103
Apr	765,457	760,638	774,452	102	3,036,834	2,988,215	3,067,507	103
May	799,288	792,813	809,725	102	3,836,122	3,781,028	3,877,232	103
Jun	776,343	774,679			4,612,465	4,555,707		
Jul	781,701	777,838			5,394,166	5,333,545		
Aug	780,030	784,037			6,174,196	6,117,582		
Sep	740,388	739,481			6,914,584	6,857,063		
Oct	720,564	734,961			7,635,148	7,592,024		
Nov	690,061	707,627			8,325,209	8,299,651		
Dec	753,883	780,094			9,079,092	9,079,745		

**Intended Placements: Broiler-Type Pullet Chicks for Hatchery
Supply Flocks by Month and Total, 2002-04 ¹**

Month	Pullet Chicks Hatched			2004 as % of 2003	Cumulative Potential Placements Relative to Current Supply Flocks 7-15 Months Earlier ²		
	2002	2003	2004		2002	2003	2004
	<i>1,000</i>	<i>1,000</i>	<i>1,000</i>	<i>Percent</i>	<i>1,000</i>	<i>1,000</i>	<i>1,000</i>
US Place- ments							
Jan	6,264	6,269	6,811	109	60,750	62,473	60,450
Feb	7,275	6,659	7,340	110	60,382	62,371	61,256
Mar	6,775	7,038	6,815	97	60,771	62,559	61,719
Apr	6,814	6,735	6,402	95	60,989	62,658	61,898
May	7,597	7,323	7,492	102	61,008	62,659	61,941
Jun	7,206	6,748			61,521	62,322	62,228
Jul	6,602	7,071			61,346	62,022	62,168
Aug	7,449	7,401			61,212	61,477	62,244
Sep	6,676	6,654			61,370	60,539	62,261
Oct	6,265	6,312			61,323	60,371	62,328
Nov	6,938	6,946			61,811	60,504	61,659
Dec	6,475	6,978			61,914	60,378	61,750
Annual Total	82,336	82,134					
Total Place- ments ³							
Jan	7,415	7,388	7,812	106			
Feb	8,491	8,094	8,251	102			
Mar	7,997	8,549	7,801	91			
Apr	8,119	8,062	7,288	90			
May	8,982	8,604	8,596	100			
Jun	8,802	8,341					
Jul	8,083	8,555					
Aug	8,913	8,756					
Sep	8,002	8,338					
Oct	7,438	7,695					
Nov	8,202	8,246					
Dec	8,016	8,185					
Annual Total	98,460	98,813					

¹ Reported by leading breeders. Coverage may not be 100 percent. Includes expected pullet chicks from eggs sold during the preceding month at the rate of 125 pullet chicks per 30 dozen case of eggs.

² For May 2004, includes breeder pullet chicks hatched Feb 2003 through Oct 2003.

³ U.S. production of intended placements worldwide.

Procedures and Reliability

Data Sources: Primary data for the "**Chickens and Eggs**" report are from weekly and/or monthly questionnaires sent to producers. An attempt is made to collect information for layer and egg estimates from each known contractor and independent producer who has over 30,000 table egg layers. Coverage for operations with less than 30,000 table egg layers are estimated each month based on data reported in December. Approximately 900 contractors, independent egg producers, and started pullet operations are contacted each month. All known hatcheries, approximately 330, are contacted for information on a weekly and/or monthly basis.

Revisions: The previous month's estimates are subject to revision if late reports or corrected data indicates a different level. Additionally, revisions needed after the monthly report will be made at the end of the marketing year and published in the annual summaries of "**Chickens and Eggs Summary**" and "**Hatchery Production**".

Procedures and Reliability: Operations are mailed a questionnaire and given adequate time to respond by mail. Those that do not respond are phoned. Great care is exercised to ensure that all operations are accounted for during each survey period. However, there are usually missing reports that must be accounted for in the estimates.

Sound statistical methodology is employed to derive estimates from the reported data. All data are checked for unusual values. All operations' data are compared to their own past operating profiles and also to trends from other operations. Data for missing operations are estimated based on similar operations or historical data. Survey data are subject to non-sampling errors such as omissions and mistakes in reporting and in processing. While these errors cannot be measured directly, they are minimized by reviewing all data for consistency and reasonableness.

Egg-type chicks hatched are comprised of all chicks of egg-type domesticated breeds including males and chicks destined for hatchery supply flocks and research purposes. The relationship of chicks hatched to chicken inventory and poultry marketings is carefully monitored. The disposition of egg-type chicks hatched prior to placement into the laying flock can vary significantly, which can make comparisons to changes in layer inventory inconsistent over time.

Intended placement data reported by leading breeders include pullet chicks expected from eggs sold the preceding month. The breeders in this report account for a large percentage of replacement pullets for hatchery supply flocks. Production of replacement pullets by these breeders indicates the number of pullets available to hatchery supply flocks several months before the pullets will actually move into the flocks. "Hatchery Supply Flocks" include all generations of layers which could lay eggs to supply a hatchery. This includes the generations of parents, grandparents, great-grandparents, pedigree, etc. Also included are research flocks, vaccine flocks, and specific pathogen-free flocks. The broiler cumulative potential placements are a moving total of the intended placements 7-15 months earlier. The egg-type cumulative potential placements of 7-18 months represent the first laying cycle. Molting and additional laying cycles will increase the cumulative potential placements of egg-type hatching flocks.

ACCESS TO REPORTS!!

For your convenience, there are several ways to obtain NASS reports, data products, and services:

INTERNET ACCESS

All NASS reports are available free of charge on the worldwide Internet. For access, connect to the Internet and go to the NASS Home Page at: www.usda.gov/nass/. Select "Today's Reports" or Publications and then Reports Calendar or Publications and then Search, by Title or Subject.

E-MAIL SUBSCRIPTION

All NASS reports are available by subscription free of charge direct to your e-mail address. Starting with the NASS Home Page at www.usda.gov/nass/, click on **Publications**, then click on the **Subscribe by E-mail** button which takes you to the page describing e-mail delivery of reports. Finally, click on **Go to the Subscription Page** and follow the instructions.

PRINTED REPORTS OR DATA PRODUCTS

CALL OUR TOLL-FREE ORDER DESK: 800-999-6779 (U.S. and Canada)
Other areas, please call 703-605-6220 FAX: 703-605-6900
(Visa, MasterCard, check, or money order acceptable for payment.)

ASSISTANCE

For **assistance** with general agricultural statistics or further information about NASS or its products or services, contact the **Agricultural Statistics Hotline** at **800-727-9540**, 7:30 a.m. to 4:00 p.m. ET, or e-mail: nass@nass.usda.gov.

The United States Department of Agriculture (USDA) prohibits discrimination in all its programs on the basis of race, color, national origin, gender, religion, age, disability, political beliefs, sexual orientation, and marital or family status. (Not all prohibited bases apply to all programs.) Persons with disabilities who require alternative means for communication of program information (braille, large print, audiotape, etc.) should contact the USDA's TARGET Center at 202-720-2600 (voice and TDD).

To file a complaint of discrimination, write USDA, Director, Office of Civil Rights, Room 326-W, Whitten Building, 1400 Independence Avenue, SW, Washington, D.C., 20250-9410, or call 202-720-5964 (voice or TDD). USDA is an equal opportunity provider and employer.