

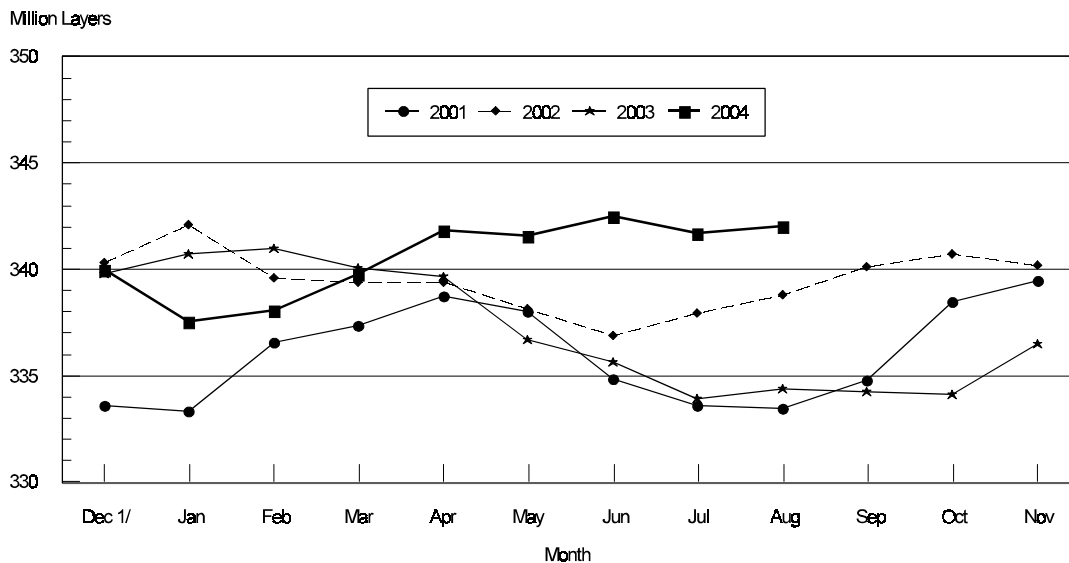
Released August 23, 2004, by the National Agricultural Statistics Service (NASS), Agricultural Statistics Board, U.S. Department of Agriculture. For information on *Chickens and Eggs* call Tom Kruchten at (202) 690-4870, for "Hatch" call Jody Roberts at (202) 690-8632, office hours 7:30 a.m. to 4:00 p.m. ET.

July Egg Production Up 2 Percent

U.S. egg production totaled 7.54 billion during July 2004, up 2 percent from last year. Production included 6.45 billion table eggs, and 1.10 billion hatching eggs, of which 1.04 billion were broiler-type and 56.0 million were egg-type. The total number of layers during July 2004 averaged 342 million, up 2 percent from a year earlier. July egg production per 100 layers was 2,207 eggs, down slightly from July 2003.

July 2004 contained 22 weekdays, 5 Saturdays, 1 holiday compared to July 2003 which contained 23 weekdays, 4 Saturdays and 1 holiday.

All Layers: 1st of Month United States, 2001 - 2004



1/ Previous Year

All layers in the U.S. on August 1, 2004, totaled 342 million, up 2 percent from a year ago. The 342 million layers consisted of 283 million layers producing table or market type eggs, 56.2 million layers producing broiler-type hatching eggs, and 2.40 million layers producing egg-type hatching eggs. Rate of lay per day on August 1, 2004, averaged 71.0 eggs per 100 layers, down 1 percent from a year ago.

Laying flocks in the 30 major egg producing States produced 7.05 billion eggs during July 2004, up 2 percent from a year ago. The average number of layers during July, at 319 million, was up 2 percent from a year ago.

Individual State estimates are available for the 30 major egg producing States. These States are listed on page 8 of this release and account for approximately 94 percent of the total U.S. egg production. Production for the other States are grouped into an "Other States" category and combined with the 30 States published individually to obtain a U.S. estimate.

Egg-Type Chicks Hatched Down 4 Percent

Egg-type chicks hatched during July totaled 34.1 million, down 4 percent from July 2003. Eggs in incubators totaled 31.1 million on August 1, 2004, up 1 percent from a year ago.

Domestic placements of egg-type pullet chicks for future hatchery supply flocks by leading breeders totaled 243,000 during July 2004, up 6 percent from July 2003.

Broiler Hatch Up 4 Percent

The July 2004 hatch of broiler-type chicks, at 807 million, was up 4 percent from July of the previous year. There were 663 million eggs in incubators on August 1, 2004, up 3 percent from a year earlier.

Leading breeders placed 6.83 million broiler-type pullet chicks for future domestic hatchery supply flocks during July 2004, down 3 percent from July 2003.

**All Layers: Average Number on Hand During the Month,
United States, 2001-04**

Month	2001	2002	2003	2004
	<i>1,000 Layers</i>	<i>1,000 Layers</i>	<i>1,000 Layers</i>	<i>1,000 Layers</i>
Dec ¹	333,488	341,243	340,316	338,243
Jan	334,982	340,885	340,910	337,749
Feb	337,008	339,529	340,575	338,942
Mar	338,078	339,434	339,885	341,000
Apr	338,414	338,809	338,182	341,912
May	336,454	337,566	336,164	342,085
Jun	334,237	337,339	334,789	342,140
Jul	333,571	337,849	334,179	341,897
Aug	334,156	338,397	334,332	
Sep	336,651	339,511	334,198	
Oct	338,996	340,461	335,333	
Nov	339,919	340,490	338,283	

¹ December preceding year.

**Eggs: Production During the Month by Type,
United States, 2003-04**

Month	Total Eggs		Table Eggs		Hatching Eggs	
	2003	2004	2003	2004	2003	2004
	<i>Million Eggs</i>	<i>Million Eggs</i>	<i>Million Eggs</i>	<i>Million Eggs</i>	<i>Million Eggs</i>	<i>Million Eggs</i>
Dec ¹	7,451	7,520	6,392	6,466	1,058	1,055
Jan	7,390	7,371	6,301	6,315	1,088	1,056
Feb	6,665	6,890	5,673	5,890	991	1,001
Mar	7,424	7,532	6,316	6,446	1,108	1,087
Apr	7,187	7,343	6,103	6,276	1,084	1,067
May	7,327	7,499	6,200	6,386	1,127	1,113
Jun	7,105	7,274	6,028	6,201	1,077	1,072
Jul	7,403	7,544	6,316	6,449	1,086	1,095
Aug	7,367		6,296		1,070	
Sep	7,112		6,095		1,017	
Oct	7,439		6,381		1,058	
Nov	7,326		6,301		1,025	
During Year	87,196	58,973	74,404	50,429	12,789	8,546

¹ December preceding year.

**Layers and Eggs: Layers on Hand and Eggs Produced by Type,
and Forced Molt, United States, June-July 2003-04**

Item	Unit	2003	2004	2004 as % of 2003
Layers During Jun	1,000			
All Layers		334,789	342,140	102
Table Egg Type		275,097	282,676	103
Hatching Egg Type		59,692	59,464	100
Broiler-Type Hatching		56,993	57,129	100
Egg-Type Hatching		2,699	2,335	87
Eggs per 100 Layers During Jun	Number			
All Layers		2,122	2,126	100
Table Egg Type		2,191	2,194	100
Hatching Egg Type		1,804	1,803	100
Broiler-Type Hatching		1,781	1,782	100
Egg-Type Hatching		2,297	2,313	101
Eggs Produced During Jun	Million			
All Layers		7,105	7,274	102
Table Egg Type		6,028	6,201	103
Hatching Egg Type		1,077	1,072	100
Broiler-Type Hatching		1,015	1,018	100
Egg-Type Hatching		62	54	87
Layers on Jul 1	1,000			
All Layers		333,925	341,703	102
Table Egg Type		274,788	282,634	103
Hatching Egg Type		59,137	59,069	100
Broiler-Type Hatching		56,490	56,817	101
Egg-Type Hatching		2,647	2,252	85
Eggs per 100 Layers on Jul 1	Number			
All Layers		71.4	71.3	100
Table Egg Type		73.9	73.6	100
Hatching Egg Type		59.7	60.3	101
Broiler-Type Hatching		58.9	59.6	101
Egg-Type Hatching		76.6	76.9	100
Forced Molt Layers on Jul 1	Percent			
Percent Being Molted		4.3	4.6	107
Percent with Molt Completed		23.9	24.0	100
Layers Sold for Slaughter During Jun	1,000	15,162	15,707	104
Layers Rendered, Died, Destroyed, Composted or Disappeared For Any Reason During Jun	1,000	5,898	6,079	103
Pullets Less Than 20 Weeks of Age, Jul 1	1,000	101,125	104,399	103
Pullets Added During Jun ¹	1,000	23,008	25,567	111

¹ Pullet chicks one day old added to pullet flocks.

**Layers and Eggs: Layers on Hand and Eggs Produced by Type,
and Forced Molt, United States, July-August 2003-04**

Item	Unit	2003 ¹	2004	2004 as % of 2003
Layers During Jul	1,000			
All Layers		334,179	341,897	102
Table Egg Type		275,483	283,053	103
Hatching Egg Type		58,696	58,844	100
Broiler-Type Hatching		56,047	56,512	101
Egg-Type Hatching		2,649	2,332	88
Eggs per 100 Layers During Jul	Number			
All Layers		2,215	2,207	100
Table Egg Type		2,293	2,278	99
Hatching Egg Type		1,850	1,861	101
Broiler-Type Hatching		1,827	1,839	101
Egg-Type Hatching		2,341	2,401	103
Eggs Produced During Jul	Million			
All Layers		7,403	7,544	102
Table Egg Type		6,316	6,449	102
Hatching Egg Type		1,086	1,095	101
Broiler-Type Hatching		1,024	1,039	101
Egg-Type Hatching		62	56	90
Layers on Aug 1	1,000			
All Layers		334,381	342,046	102
Table Egg Type		276,154	283,449	103
Hatching Egg Type		58,227	58,597	101
Broiler-Type Hatching		55,587	56,194	101
Egg-Type Hatching		2,640	2,403	91
Eggs per 100 Layers on Aug 1	Number			
All Layers		71.4	71.0	99
Table Egg Type		73.8	73.4	99
Hatching Egg Type		59.5	59.6	100
Broiler-Type Hatching		58.7	58.9	100
Egg-Type Hatching		75.8	76.7	101
Forced Molt Layers, Aug 1	Percent			
Percent Being Molted		4.1	4.5	110
Percent with Molt Completed		23.5	23.4	100
Layers Sold for Slaughter During Jul	1,000	15,605	14,905	96
Layers Rendered, Died, Destroyed, Composted or Disappeared For Any Reason During Jul	1,000	6,185	5,738	93
Pullets Less Than 20 Weeks of Age, Aug 1	1,000	101,159	104,079	103
Pullets Added During Jul ²	1,000	26,104	25,926	99

¹ Revised.

² Pullet chicks one day old added to pullet flocks.

Layers and Eggs: Layers on Hand and Eggs Produced by Type, and Forced Molt, 30 Selected States, June-July, 2003-04 ¹

Item	Unit	2003	2004	2004 as % of 2003
Layers During Jun	1,000			
All Layers		312,442	319,395	102
Table Egg Type		257,585	264,961	103
Hatching Egg Type		54,857	54,434	99
Broiler-Type Hatching		52,251	52,216	100
Egg-Type Hatching		2,606	2,218	85
Eggs per 100 Layers During Jun	Number			
All Layers		2,122	2,127	100
Table Egg Type		2,190	2,194	100
Hatching Egg Type		1,803	1,799	100
Broiler-Type Hatching		1,778	1,777	100
Egg-Type Hatching		2,302	2,299	100
Eggs Produced During Jun	Million			
All Layers		6,630	6,794	102
Table Egg Type		5,641	5,814	103
Hatching Egg Type		989	979	99
Broiler-Type Hatching		929	928	100
Egg-Type Hatching		60	51	85
Layers on Jul 1	1,000			
All Layers		311,635	318,919	102
Table Egg Type		257,241	264,855	103
Hatching Egg Type		54,394	54,064	99
Broiler-Type Hatching		51,838	51,908	100
Egg-Type Hatching		2,556	2,156	84
Eggs per 100 Layers on Jul 1	Number			
All Layers		71.5	71.3	100
Table Egg Type		74.0	73.6	99
Hatching Egg Type		59.8	60.3	101
Broiler-Type Hatching		59.0	59.6	101
Egg-Type Hatching		76.7	76.6	100
Forced Molt Layers on Jul 1	Percent			
Percent Being Molted		4.4	4.6	105
Percent with Molt Completed		23.5	23.7	101
Layers Sold for Slaughter During Jun	1,000	14,092	14,809	105
Layers Rendered, Died, Destroyed, Composted or Disappeared For Any Reason During Jun	1,000	5,579	5,696	102
Pullets Less Than 20 Weeks of Age, Jul 1	1,000	94,607	97,061	103
Pullets Added During Jun ²	1,000	21,643	23,981	111

¹ The 30 States are listed in the table on page 8.

² Pullet chicks one day old added to pullet flocks.

Layers and Eggs: Layers on Hand and Eggs Produced by Type, and Forced Molt, 30 Selected States, July-August, 2003-04¹

Item	Unit	2003 ²	2004	2004 as % of 2003
Layers During Jul	1,000			
All Layers		311,824	319,285	102
Table Egg Type		257,901	265,480	103
Hatching Egg Type		53,923	53,805	100
Broiler-Type Hatching		51,365	51,589	100
Egg-Type Hatching		2,558	2,216	87
Eggs per 100 Layers During Jul	1,000			
All Layers		2,217	2,209	100
Table Egg Type		2,293	2,280	99
Hatching Egg Type		1,853	1,859	100
Broiler-Type Hatching		1,828	1,836	100
Egg-Type Hatching		2,346	2,392	102
Eggs Produced During Jul	Million			
All Layers		6,913	7,053	102
Table Egg Type		5,914	6,052	102
Hatching Egg Type		999	1,000	100
Broiler-Type Hatching		939	947	101
Egg-Type Hatching		60	53	88
Layers on Aug 1	1,000			
All Layers		311,973	319,614	102
Table Egg Type		258,545	266,085	103
Hatching Egg Type		53,428	53,529	100
Broiler-Type Hatching		50,877	51,260	101
Egg-Type Hatching		2,551	2,269	89
Eggs per 100 Layers on Aug 1	Number			
All Layers		71.4	71.1	100
Table Egg Type		73.9	73.4	99
Hatching Egg Type		59.6	59.6	100
Broiler-Type Hatching		58.8	58.8	100
Egg-Type Hatching		75.9	76.7	101
Forced Molt Layers, Aug 1	Percent			
Percent Being Molted		4.1	4.5	110
Percent with Molt Completed		23.0	23.2	101
Layers Sold for Slaughter During Jul	1,000	14,750	13,887	94
Layers Rendered, Died, Destroyed, Composted or Disappeared For Any Reason During Jul	1,000	5,964	5,484	92
Pullets Less Than 20 Weeks of Age, Aug 1	1,000	94,614	96,555	102
Pullets Added During Jul ³	1,000	24,316	24,418	100

¹ The 30 States are listed in the table on page 8.

² Revised.

³ Pullet chicks one day old added to pullet flocks.

**Layers and Eggs: Layers on Hand and Eggs Produced by State
and United States, During June 2003-04**

State	Table Egg Layers in Flocks 30,000 and Above		All Layers ¹		Eggs per 100 for All Layers ¹	
	2003	2004	2003	2004	2003	2004
	<i>1,000</i>	<i>1,000</i>	<i>1,000</i>	<i>1,000</i>	<i>Number</i>	<i>Number</i>
AL	2,004	1,760	9,620	9,430	1,861	1,813
AR	4,347	4,130	15,268	15,063	1,821	1,865
CA	19,705	19,920	20,223	20,431	2,111	2,149
CO	3,283	3,360	3,790	3,895	2,348	2,259
CT	2,763	2,805	2,820	2,858	2,199	2,309
FL	10,205	11,008	10,755	11,553	2,111	2,112
GA	10,996	11,098	20,554	20,197	1,980	2,025
HI	456	466	494	504	1,883	1,925
IL	3,375	3,626	3,603	3,849	2,165	2,052
IN	21,970	22,774	22,611	23,531	2,220	2,197
IA	37,881	43,513	38,673	44,204	2,154	2,142
ME	4,073	3,398	4,126	3,444	2,254	2,323
MD	2,512	3,020	2,723	3,141	2,130	2,197
MI	6,877	7,220	7,128	7,471	2,189	2,275
MN	10,460	10,078	11,070	10,616	2,204	2,251
MS	1,844	1,731	6,864	6,849	1,967	1,913
MO	5,375	5,574	6,793	6,901	2,238	2,159
NE	11,604	11,491	11,704	11,566	2,256	2,239
NY	3,314	3,707	3,607	4,035	2,384	2,354
NC	3,301	3,376	10,869	10,913	1,951	1,897
OH	28,478	27,818	28,981	28,303	2,108	2,152
OK	1,939	1,873	4,066	4,050	1,845	1,877
OR	2,661	2,784	2,847	2,957	2,213	2,232
PA	22,729	22,432	24,506	24,189	2,271	2,270
SC	4,152	4,107	5,314	5,274	2,051	1,991
SD	2,673	3,335	2,873	3,535	2,193	2,235
TX	14,017	13,626	18,293	18,016	2,148	2,159
VA	1,203	1,280	3,260	3,290	1,963	1,854
WA	4,782	4,830	4,860	4,897	2,243	2,308
WI	3,634	3,928	4,147	4,433	2,315	2,188
30 Sts	252,613	260,068	312,442	319,395	2,122	2,127
Oth Sts ²	16,371	16,522	22,347	22,745	2,126	2,110
US	268,984	276,590	334,789	342,140	2,122	2,126

¹ Includes all layers and eggs produced in both table egg and hatching egg flocks regardless of size.

² Estimates for individual States are not available.

**Layers and Eggs: Layers on Hand and Eggs Produced by State
and United States, During July 2003-04**

State	Table Egg Layers in Flocks 30,000 and Above		All Layers ¹		Eggs per 100 for All Layers ¹	
	2003	2004	2003	2004	2003	2004
	<i>1,000</i>	<i>1,000</i>	<i>1,000</i>	<i>1,000</i>	<i>Number</i>	<i>Number</i>
AL	2,122	1,870	9,749	9,548	1,877	1,864
AR	4,437	4,181	15,361	14,462	1,894	1,908
CA	19,485	20,073	19,921	20,558	2,259	2,233
CO	3,243	3,310	3,721	3,843	2,446	2,446
CT	2,841	2,718	2,904	2,763	2,307	2,461
FL	10,265	11,000	10,813	11,549	2,220	2,251
GA	10,953	10,965	20,337	20,076	2,065	2,117
HI	468	457	504	495	1,925	2,020
IL	3,434	3,869	3,665	4,101	2,374	2,121
IN	21,686	23,474	22,281	24,214	2,262	2,234
IA	38,593	44,271	39,391	44,963	2,318	2,260
ME	4,132	2,784	4,185	2,836	2,294	2,468
MD	2,531	2,949	2,715	3,079	2,099	2,144
MI	6,828	7,402	7,079	7,653	2,232	2,287
MN	10,393	10,103	11,003	10,638	2,281	2,322
MS	1,841	1,706	6,795	6,825	2,001	1,993
MO	5,472	5,689	6,860	7,034	2,318	2,175
NE	11,636	11,496	11,736	11,571	2,326	2,307
NY	3,230	3,788	3,515	4,108	2,475	2,434
NC	3,390	3,317	10,663	10,817	2,026	1,960
OH	28,347	27,278	28,842	27,755	2,254	2,245
OK	1,937	1,873	4,045	4,064	1,904	1,944
OR	2,676	2,735	2,866	2,908	2,373	2,338
PA	22,457	22,340	24,223	24,139	2,348	2,357
SC	4,149	4,064	5,269	5,246	2,164	2,230
SD	2,790	3,326	2,990	3,526	2,274	2,240
TX	14,010	13,679	18,239	18,124	2,204	2,251
VA	1,162	1,235	3,143	3,193	2,004	1,942
WA	4,767	4,785	4,842	4,849	2,396	2,269
WI	3,656	3,850	4,167	4,348	2,328	2,254
30 Sts	252,931	260,587	311,824	319,285	2,217	2,209
Oth Sts ²	16,443	16,380	22,355	22,612	2,192	2,171
US	269,374	276,967	334,179	341,897	2,215	2,207

¹ Includes all layers and eggs produced in both table egg and hatching egg flocks regardless of size.

² Estimates for individual States are not available.

**Egg Production: By Type, State, and United States,
June 2003-04**

State	Total Production		Table Eggs ¹		Hatching Eggs ¹	
	2003	2004	2003	2004	2003	2004
	<i>Million Eggs</i>	<i>Million Eggs</i>	<i>Million Eggs</i>	<i>Million Eggs</i>	<i>Million Eggs</i>	<i>Million Eggs</i>
AL	179	171	45	37	134	134
AR	278	281	89	93	189	188
CA	427	439				
CO	89	88				
CT	62	66				
FL	227	244	217	234	10	10
GA	407	409	235	240	172	169
HI	9.3	9.7	9.3	9.7	0	0
IL	78	79	75	76	3	3
IN	502	517	491	505	11	12
IA	833	947				
ME	93	80				
MD	58	69	55	67	3	2
MI	156	170				
MN	244	239	235	231	9	8
MS	135	131	44	39	91	92
MO	152	149				
NE	264	259	264	259	0	0
NY	86	95				
NC	212	207	80	77	132	130
OH	611	609				
OK	75	76	43	43	32	33
OR	63	66	61	64	2	2
PA	556	549	540	533	16	16
SC	109	105	89	85	20	20
SD	63	79	63	79	0	0
TX	393	389				
VA	64	61	28	28	36	33
WA	109	113				
WI	96	97				
30 Sts	6,630	6,794	5,641	5,814	989	979
Oth Sts ²	475	480	387	387	88	93
US	7,105	7,274	6,028	6,201	1,077	1,072

¹ Data by type of flock not shown for some States to avoid disclosing individual operations.

² Estimates for individual States are not available.

**Egg Production: By Type, State, and United States,
July 2003-04**

State	Total Production		Table Eggs ¹		Hatching Eggs ¹	
	2003	2004	2003	2004	2003	2004
	<i>Million Eggs</i>	<i>Million Eggs</i>	<i>Million Eggs</i>	<i>Million Eggs</i>	<i>Million Eggs</i>	<i>Million Eggs</i>
AL	183	178	46	39	137	139
AR	291	276	99	94	192	182
CA	450	459				
CO	91	94				
CT	67	68				
FL	240	260	229	250	11	10
GA	420	425	246	251	174	174
HI	9.7	10.0	9.7	10.0	0	0
IL	87	87	84	83	3	4
IN	504	541	493	529	11	12
IA	913	1,016				
ME	96	70				
MD	57	66	54	64	3	2
MI	158	175				
MN	251	247	242	239	9	8
MS	136	136	44	41	92	95
MO	159	153				
NE	273	267	273	267	0	0
NY	87	100				
NC	216	212	85	79	131	133
OH	650	623				
OK	77	79	45	44	32	35
OR	68	68	66	66	2	2
PA	569	569	553	551	16	18
SC	114	117	95	95	19	22
SD	68	79	68	79	0	0
TX	402	408				
VA	63	62	27	29	36	33
WA	116	110				
WI	97	98				
30 Sts	6,913	7,053	5,914	6,052	999	1,000
Oth Sts ²	490	491	402	397	87	95
US	7,403	7,544	6,316	6,449	1,086	1,095

¹ Data by type of flock not shown for some States to avoid disclosing individual operations.

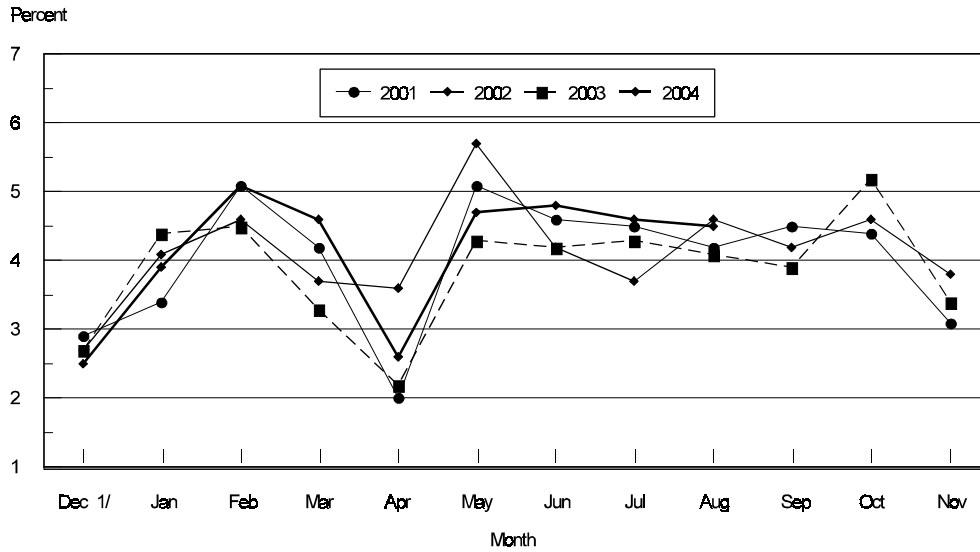
² Estimates for individual States are not available.

**Forced Molt: Percent of All Layers by Month,
United States, 2003-04¹**

Month	Percent Being Molted		Percent with Molt Completed	
	2003	2004	2003	2004
	<i>Percent</i>	<i>Percent</i>	<i>Percent</i>	<i>Percent</i>
Jan	4.4	3.9	23.7	22.4
Feb	4.5	4.9	24.0	22.8
Mar	3.3	4.6	23.7	23.3
Apr	2.2	2.6	24.6	23.5
May	4.3	4.7	23.5	22.3
Jun	4.2	4.8	23.4	23.3
Jul	4.3	4.6	23.9	24.0
Aug	4.1	4.5	23.5	23.4
Sep	3.9		22.8	
Oct	5.2		23.1	
Nov	3.4		24.1	
Dec	2.5		22.7	

¹ As of first of month.

**All Layers : United States
Percent Being Molted, 2001 - 2004
First of Month**



1/ Previous Year

**Forced Molt: Percent of All Layers by State
and United States, August 2003-04 ¹**

State	Percent Being Molted		Percent with Molt Completed	
	2003	2004	2003	2004
	<i>Percent</i>	<i>Percent</i>	<i>Percent</i>	<i>Percent</i>
AL	2.0	1.5	5.0	3.0
AR	0.0	0.5	10.5	10.0
CA	2.0	3.5	37.0	33.0
CO	6.0	3.0	20.5	23.0
CT	0.0	0.0	10.0	11.5
FL	4.5	5.0	29.5	31.5
GA	5.5	5.0	15.5	17.5
HI	5.0	6.0	56.0	50.5
IL	0.5	0.0	26.5	41.0
IN	5.5	6.0	32.5	27.5
IA	10.0	5.0	31.5	34.5
ME	0.0	0.0	0.0	0.0
MD	0.0	16.0	27.5	15.5
MI	4.0	6.5	21.5	31.5
MN	1.5	6.5	28.5	23.5
MS	2.0	1.0	11.0	12.0
MO	2.5	5.0	12.0	20.0
NE	8.5	4.5	23.0	18.0
NY	0.0	4.0	5.0	4.5
NC	0.5	2.0	11.0	9.5
OH	2.5	8.0	26.0	25.0
OK	0.0	0.0	8.5	5.0
OR	4.5	2.5	32.5	35.5
PA	4.0	4.0	20.5	14.5
SC	0.0	0.0	23.5	28.5
SD	2.0	14.0	21.5	28.5
TX	4.5	2.5	21.0	21.0
VA	0.0	8.5	17.5	22.0
WA	7.5	4.0	37.5	40.5
WI	4.5	10.5	29.5	30.5
30 Sts	4.1	4.5	23.0	23.2
Oth Sts ²	4.5	4.1	29.7	26.9
US	4.1	4.5	23.5	23.4

¹ As of first of month.

² Estimates for individual States are not available.

**Hatchery Production: Eggs in Incubators, Chicks Hatched,
and Placements by Type, United States, July-August 2003-04**

Item	2003	2004	2004 as % of 2003
	<i>1,000</i>	<i>1,000</i>	<i>Percent</i>
Egg-Type			
Eggs in Incubators on Aug 1	30,716	31,098	101
Chicks Hatched During Jul	35,566	34,127	96
Chicks Hatched Jan thru Jul	248,409	253,296	102
Pullets Hatched During Jul for Intended Placements in Hatchery Supply Flocks	230	243	106
7-18 Month Earlier ¹	2,927	3,198	109
Broiler-Type			
Eggs in Incubators on Aug 1	641,502	662,905	103
Chicks Hatched During Jul	777,838	806,827	104
Chicks Hatched Jan thru Jul	5,333,545	5,469,903	103
Pullets Hatched During Jul for Intended Placements in Hatchery Supply Flocks	7,071	6,834	97
7-15 Months Earlier ²	62,022	62,168	100

¹ 2004 includes pullet chicks hatched Jan 2003 through Dec 2003.

² 2004 includes pullet chicks hatched Apr 2003 through Dec 2003.

**Egg-Type Eggs in Incubators: By Region and United States,
August 1, 2003-04**

Geographic Division	2003	2004	2004 as % of 2003
	<i>1,000</i>	<i>1,000</i>	<i>Percent</i>
North Atlantic	4,861	4,778	98
E North Central	7,100	7,440	105
W North Central	7,503	6,289	84
South Atlantic	2,556	3,681	144
South Central	5,099	4,149	81
West	3,597	4,761	132
US	30,716	31,098	101

Regional Listing:

North Atlantic = CT, ME, MA, NH, NJ, NY, PA, RI, VT.

E North Central = IL, IN, MI, OH, WI.

W North Central = IA, KS, MN, MO, NE, ND, SD.

South Atlantic = DE, FL, GA, MD, NC, SC, VA, WV.

South Central = AL, AR, KY, LA, MS, OK, TN, TX.

West = AK, AZ, CA, CO, HI, ID, MT, NM, NV, OR, UT, WA, WY.

**Egg-Type Chicks Hatched: By State and United States,
July 2003-04**

State	July			Jan-Jul		
	2003	2004	2004 as % of 2003	2003	2004	2004 as % of 2003
	<i>1,000</i>	<i>1,000</i>	<i>Percent</i>	<i>1,000</i>	<i>1,000</i>	<i>Percent</i>
AR	824	694	84	5,663	5,776	102
FL	812	699	86	4,703	4,393	93
GA	2,407	2,328	97	16,820	16,630	99
IN	4,888	4,801	98	34,239	34,708	101
IA	6,297	5,670	90	41,985	43,083	103
MN	1,100	850	77	9,163	6,409	70
PA	4,685	4,491	96	29,995	36,253	121
Oth Sts ¹	14,553	14,594	100	105,841	106,044	100
US	35,566	34,127	96	248,409	253,296	102

¹ Not published separately to avoid disclosing data for individual operations.

Egg-Type Chicks Hatched: By Month, United States, 2002-04

Month	By Months				Cumulative			
	2002	2003	2004	2004 as % of 2003	2002	2003	2004	2004 as % of 2003
	<i>1,000</i>	<i>1,000</i>	<i>1,000</i>	<i>Percent</i>	<i>1,000</i>	<i>1,000</i>	<i>1,000</i>	<i>Percent</i>
Jan	35,655	33,521	35,350	105	35,655	33,521	35,350	105
Feb	34,473	30,510	32,078	105	70,128	64,031	67,428	105
Mar	36,985	36,775	37,530	102	107,113	100,806	104,958	104
Apr	38,096	37,804	37,514	99	145,209	138,610	142,472	103
May	38,760	37,631	38,631	103	183,969	176,241	181,103	103
Jun	35,144	36,602	38,066	104	219,113	212,843	219,169	103
Jul	35,581	35,566	34,127	96	254,694	248,409	253,296	102
Aug	35,689	33,199			290,383	281,608		
Sep	35,742	35,763			326,125	317,371		
Oct	32,157	34,812			358,282	352,183		
Nov	31,154	30,241			389,436	382,424		
Dec	32,113	33,645			421,549	416,069		

**Intended Placements: Egg-Type Pullet Chicks for Hatchery Supply
Flocks by Month and Total, United States, 2002-04¹**

Month	Pullet Chicks Hatched			2004 as % of 2003	Cumulative Potential Placements Relative to Current Supply Flocks 7-18 Months Earlier ²		
	2002	2003	2004		2003	2004	2005
	<i>1,000</i>	<i>1,000</i>	<i>1,000</i>	<i>Percent</i>	<i>1,000</i>	<i>1,000</i>	<i>1,000</i>
Jan	228	210	164	78	2,974	3,012	3,194
Feb	247	225	285	127	2,916	2,960	3,207
Mar	237	319	401	126	2,886	2,927	
Apr	295	280	311	111	2,944	2,923	
May	319	289	255	88	2,980	3,047	
Jun	221	309	212	69	2,946	3,139	
Jul	282	230	243	106	2,927	3,198	
Aug	221	188			2,909	3,152	
Sep	277	273			2,887	3,212	
Oct	186	310			2,969	3,294	
Nov	227	319			2,954	3,325	
Dec	187	246			2,924	3,291	
Total	2,927	3,198					

¹ Reported by leading breeders. Coverage may not be 100 percent. Includes expected pullet chicks from eggs sold during the preceding month at the rate of 125 pullet chicks per 30 dozen case of eggs.

² For July 2004, includes breeder pullet chicks hatched Jan 2003 through Dec 2003. The 7-18 months represent the first laying cycle. Molting and additional laying cycles will increase the cumulative potential placements.

**Broiler-Type Eggs in Incubators: By Region
and United States, August 1, 2003-04**

Geographic Division	2003	2004	2004 as % of 2003
	<i>1,000</i>	<i>1,000</i>	<i>Percent</i>
North Atlantic	12,270	12,767	104
E North Central	8,395	9,292	111
W North Central	22,081	23,666	107
South Atlantic	234,054	236,686	101
South Central	341,707	355,241	104
West	22,995	25,253	110
US	641,502	662,905	103

**Broiler-Type Chicks Hatched: By State
and United States, July 2003-04**

State	July			Jan-Jul		
	2003	2004	2004 as % of 2003	2003	2004	2004 as % of 2003
	<i>1,000</i>	<i>1,000</i>	<i>Percent</i>	<i>1,000</i>	<i>1,000</i>	<i>Percent</i>
AL	105,661	113,716	108	716,906	767,479	107
AR	111,352	115,416	104	765,907	789,707	103
DE	13,188	13,709	104	90,302	95,255	105
FL	4,874	4,987	102	37,816	34,187	90
GA	118,995	122,912	103	796,179	832,905	105
KY	24,218	26,607	110	167,030	177,216	106
LA	14,446	14,113	98	95,600	95,902	100
MD	34,497	32,708	95	240,425	219,738	91
MS	71,521	74,656	104	487,607	500,482	103
NC	64,958	67,288	104	463,022	461,854	100
OK	23,159	24,284	105	159,929	163,780	102
PA	13,030	13,738	105	87,619	90,892	104
SC	16,007	13,729	86	116,726	92,633	79
TX	53,685	56,341	105	373,537	380,574	102
VA	23,890	25,121	105	166,246	165,547	100
CA, MO, TN, & WV	62,077	63,936	103	417,001	443,839	106
19 Sts ¹	755,558	783,261	104	5,181,852	5,311,990	103
Oth Sts ²	22,280	23,566	106	151,693	157,913	104
US	777,838	806,827	104	5,333,545	5,469,903	103

¹ States in the weekly hatchery production estimating program.

² Not published separately to avoid disclosing data for individual operations.

Broiler-Type Chicks Hatched: By Month, United States, 2002-04

Month	By Months				Cumulative			
	2002	2003	2004	2004 as % of 2003	2002	2003	2004	2004 as % of 2003
	<i>1,000</i>	<i>1,000</i>	<i>1,000</i>	<i>Percent</i>	<i>1,000</i>	<i>1,000</i>	<i>1,000</i>	<i>Percent</i>
Jan	776,961	759,674	773,970	102	776,961	759,674	773,970	102
Feb	703,323	693,549	727,936	105	1,480,284	1,453,223	1,501,906	103
Mar	791,093	774,354	791,149	102	2,271,377	2,227,577	2,293,055	103
Apr	765,457	760,638	774,452	102	3,036,834	2,988,215	3,067,507	103
May	799,288	792,813	809,725	102	3,836,122	3,781,028	3,877,232	103
Jun	776,343	774,679	785,844	101	4,612,465	4,555,707	4,663,076	102
Jul	781,701	777,838	806,827	104	5,394,166	5,333,545	5,469,903	103
Aug	780,030	784,037			6,174,196	6,117,582		
Sep	740,388	739,481			6,914,584	6,857,063		
Oct	720,564	734,961			7,635,148	7,592,024		
Nov	690,061	707,627			8,325,209	8,299,651		
Dec	753,883	780,094			9,079,092	9,079,745		

**Intended Placements: Broiler-Type Pullet Chicks for Hatchery
Supply Flocks by Month and Total, 2002-04 ¹**

Month	Pullet Chicks Hatched			2004 as % of 2003	Cumulative Potential Placements Relative to Current Supply Flocks 7-15 Months Earlier ²		
	2002	2003	2004		2003	2004	2005
	<i>1,000</i>	<i>1,000</i>	<i>1,000</i>	<i>Percent</i>	<i>1,000</i>	<i>1,000</i>	<i>1,000</i>
US Place- ments							
Jan	6,264	6,269	6,811	109	62,473	60,450	61,823
Feb	7,275	6,659	7,340	110	62,371	61,256	62,345
Mar	6,775	7,038	6,815	97	62,559	61,719	
Apr	6,814	6,735	6,402	95	62,658	61,898	
May	7,597	7,323	7,492	102	62,659	61,941	
Jun	7,206	6,748	6,727	100	62,322	62,228	
Jul	6,602	7,071	6,834	97	62,022	62,168	
Aug	7,449	7,401			61,477	62,244	
Sep	6,676	6,654			60,539	62,261	
Oct	6,265	6,312			60,371	62,328	
Nov	6,938	6,946			60,504	61,659	
Dec	6,475	6,978			60,378	61,750	
Annual Total	82,336	82,134					
Total Place- ments ³							
Jan	7,415	7,388	7,812	106			
Feb	8,491	8,094	8,251	102			
Mar	7,997	8,549	7,801	91			
Apr	8,119	8,062	7,288	90			
May	8,982	8,604	8,596	100			
Jun	8,802	8,341	8,100	97			
Jul	8,083	8,555	8,149	95			
Aug	8,913	8,756					
Sep	8,002	8,338					
Oct	7,438	7,695					
Nov	8,202	8,246					
Dec	8,016	8,185					
Annual Total	98,460	98,813					

¹ Reported by leading breeders. Coverage may not be 100 percent. Includes expected pullet chicks from eggs sold during the preceding month at the rate of 125 pullet chicks per 30 dozen case of eggs.

² For Jul 2004, includes breeder pullet chicks hatched Apr 2003 through Dec 2003.

³ U.S. production of intended placements worldwide.

Procedures and Reliability

Data Sources: Primary data for the "**Chickens and Eggs**" report are from weekly and/or monthly questionnaires sent to producers. An attempt is made to collect information for layer and egg estimates from each known contractor and independent producer who has over 30,000 table egg layers. Coverage for operations with less than 30,000 table egg layers are estimated each month based on data reported in December. Approximately 900 contractors, independent egg producers, and started pullet operations are contacted each month. All known hatcheries, approximately 330, are contacted for information on a weekly and/or monthly basis.

Revisions: The previous month's estimates are subject to revision if late reports or corrected data indicates a different level. Additionally, revisions needed after the monthly report will be made at the end of the marketing year and published in the annual summaries of "**Chickens and Eggs Summary**" and "**Hatchery Production**".

Procedures and Reliability: Operations are mailed a questionnaire and given adequate time to respond by mail. Those that do not respond are phoned. Great care is exercised to ensure that all operations are accounted for during each survey period. However, there are usually missing reports that must be accounted for in the estimates.

Sound statistical methodology is employed to derive estimates from the reported data. All data are checked for unusual values. All operations' data are compared to their own past operating profiles and also to trends from other operations. Data for missing operations are estimated based on similar operations or historical data. Survey data are subject to non-sampling errors such as omissions and mistakes in reporting and in processing. While these errors cannot be measured directly, they are minimized by reviewing all data for consistency and reasonableness.

Egg-type chicks hatched are comprised of all chicks of egg-type domesticated breeds including males and chicks destined for hatchery supply flocks and research purposes. The relationship of chicks hatched to chicken inventory and poultry marketings is carefully monitored. The disposition of egg-type chicks hatched prior to placement into the laying flock can vary significantly, which can make comparisons to changes in layer inventory inconsistent over time.

Intended placement data reported by leading breeders include pullet chicks expected from eggs sold the preceding month. The breeders in this report account for a large percentage of replacement pullets for hatchery supply flocks. Production of replacement pullets by these breeders indicates the number of pullets available to hatchery supply flocks several months before the pullets will actually move into the flocks. "Hatchery Supply Flocks" include all generations of layers which could lay eggs to supply a hatchery. This includes the generations of parents, grandparents, great-grandparents, pedigree, etc. Also included are research flocks, vaccine flocks, and specific pathogen-free flocks. The broiler cumulative potential placements are a moving total of the intended placements 7-15 months earlier. The egg-type cumulative potential placements of 7-18 months represent the first laying cycle. Molting and additional laying cycles will increase the cumulative potential placements of egg-type hatching flocks.

ACCESS TO REPORTS!!

For your convenience, there are several ways to obtain NASS reports, data products, and services:

INTERNET ACCESS

All NASS reports are available free of charge on the worldwide Internet. For access, connect to the Internet and go to the NASS Home Page at: www.usda.gov/nass/. Select "Today's Reports" or Publications and then Reports Calendar or Publications and then Search, by Title or Subject.

E-MAIL SUBSCRIPTION

All NASS reports are available by subscription free of charge direct to your e-mail address. Starting with the NASS Home Page at www.usda.gov/nass/, click on **Publications**, then click on the **Subscribe by E-mail** button which takes you to the page describing e-mail delivery of reports. Finally, click on **Go to the Subscription Page** and follow the instructions.

PRINTED REPORTS OR DATA PRODUCTS

CALL OUR TOLL-FREE ORDER DESK: 800-999-6779 (U.S. and Canada)
Other areas, please call 703-605-6220 FAX: 703-605-6900
(Visa, MasterCard, check, or money order acceptable for payment.)

ASSISTANCE

For **assistance** with general agricultural statistics or further information about NASS or its products or services, contact the **Agricultural Statistics Hotline** at **800-727-9540**, 7:30 a.m. to 4:00 p.m. ET, or e-mail: nass@nass.usda.gov.

The United States Department of Agriculture (USDA) prohibits discrimination in all its programs on the basis of race, color, national origin, gender, religion, age, disability, political beliefs, sexual orientation, and marital or family status. (Not all prohibited bases apply to all programs.) Persons with disabilities who require alternative means for communication of program information (braille, large print, audiotape, etc.) should contact the USDA's TARGET Center at 202-720-2600 (voice and TDD).

To file a complaint of discrimination, write USDA, Director, Office of Civil Rights, Room 326-W, Whitten Building, 1400 Independence Avenue, SW, Washington, D.C., 20250-9410, or call 202-720-5964 (voice or TDD). USDA is an equal opportunity provider and employer.