



NASS

FACT FINDERS FOR AGRICULTURE
UNITED STATES DEPARTMENT OF AGRICULTURE

Washington, D.C.

Chickens And Eggs

Released May 22, 2007, by the National Agricultural Statistics Service (NASS), Agricultural Statistics Board, U.S. Department of Agriculture. For information on *Chickens and Eggs* call Sharyn Lavender at (202) 720-3244, office hours 7:30 a.m. to 4:00 p.m. ET.

April Egg Production Down 1 Percent

U.S. egg production totaled 7.43 billion during April 2007, down 1 percent from last year. Production included 6.34 billion table eggs, and 1.09 billion hatching eggs, of which 1.03 billion were broiler-type and 66 million were egg-type. The total number of layers during April 2007 averaged 344 million, down 1 percent from last year. April egg production per 100 layers was 2,162 eggs, down slightly from April 2006.

All layers in the U.S. on May 1, 2007 totaled 342 million, down 1 percent from last year. The 342 million layers consisted of 283 million layers producing table or market type eggs, 56.5 million layers producing broiler-type hatching eggs, and 2.87 million layers producing egg-type hatching eggs. Rate of lay per day on May 1, 2007, averaged 71.1 eggs per 100 layers, down slightly from May 1, 2006.

Egg-Type Chicks Hatched Up 12 Percent

Egg-type chicks hatched during April 2007 totaled 39.7 million, up 12 percent from April 2006. Eggs in incubators totaled 36.8 million on May 1, 2007, down 2 percent from a year ago.

Domestic placements of egg-type pullet chicks for future hatchery supply flocks by leading breeders totaled 274,000 during April 2007, up 8 percent from April 2006.

Broiler-Type Chicks Hatched Up 2 Percent

Broiler-type chicks hatched during April 2007 totaled 801 million, up 2 percent from April 2006. Eggs in incubators totaled 680 million on May 1, 2007, up 3 percent from a year earlier.

Leading breeders placed 6.69 million broiler-type pullet chicks for future domestic hatchery supply flocks during April 2007, up 2 percent from April 2006.

Contents

Page

U.S. Average Number of Layers on Hand and Egg Production	1
U.S. Layers on Hand and Eggs Produced by Type, Forced Molt, and Pullets	3
Layers on Hand and Eggs Produced by State	5
Egg Production by Type and State	7
Forced Molt	9
Egg-Type Hatchery	11
Egg-Type Intended Placements	13
Broiler-Type Hatchery	13
Broiler-Type Intended Placements	15
Procedures and Reliability	16
Information Contacts	16

**All Layers: Average Number on Hand During the Month,
United States, 2005-07**

Month	2005	2006	2007
	<i>1,000 Layers</i>	<i>1,000 Layers</i>	<i>1,000 Layers</i>
Dec ¹	345,615	348,810	348,098
Jan	347,874	349,677	347,133
Feb	348,784	350,018	347,079
Mar	347,120	350,470	346,437
Apr	343,927	348,643	343,825
May	342,162	345,223	
Jun	340,200	342,685	
Jul	338,917	341,252	
Aug	339,777	341,540	
Sep	341,433	343,147	
Oct	343,381	344,538	
Nov	346,314	346,936	

¹ December preceding year.

**Eggs: Production During the Month by Type,
United States, 2006-07 ¹**

Month	Total Eggs		Table Eggs		Hatching Eggs	
	2006	2007	2006	2007	2006	2007
	<i>Million Eggs</i>	<i>Million Eggs</i>	<i>Million Eggs</i>	<i>Million Eggs</i>	<i>Million Eggs</i>	<i>Million Eggs</i>
Dec ²	7,793	7,777	6,697	6,683	1,096	1,094
Jan	7,727	7,637	6,622	6,535	1,105	1,102
Feb	6,980	6,916	5,983	5,918	997	998
Mar	7,843	7,769	6,732	6,646	1,112	1,123
Apr	7,543	7,434	6,468	6,341	1,075	1,093
May	7,637		6,520		1,117	
Jun	7,401		6,336		1,066	
Jul	7,645		6,550		1,095	
Aug	7,647		6,557		1,090	
Sep	7,430		6,379		1,051	
Oct	7,678		6,600		1,078	
Nov	7,549		6,506		1,043	
During Year	90,877		77,954		12,927	

¹ Totals may not add due to rounding.

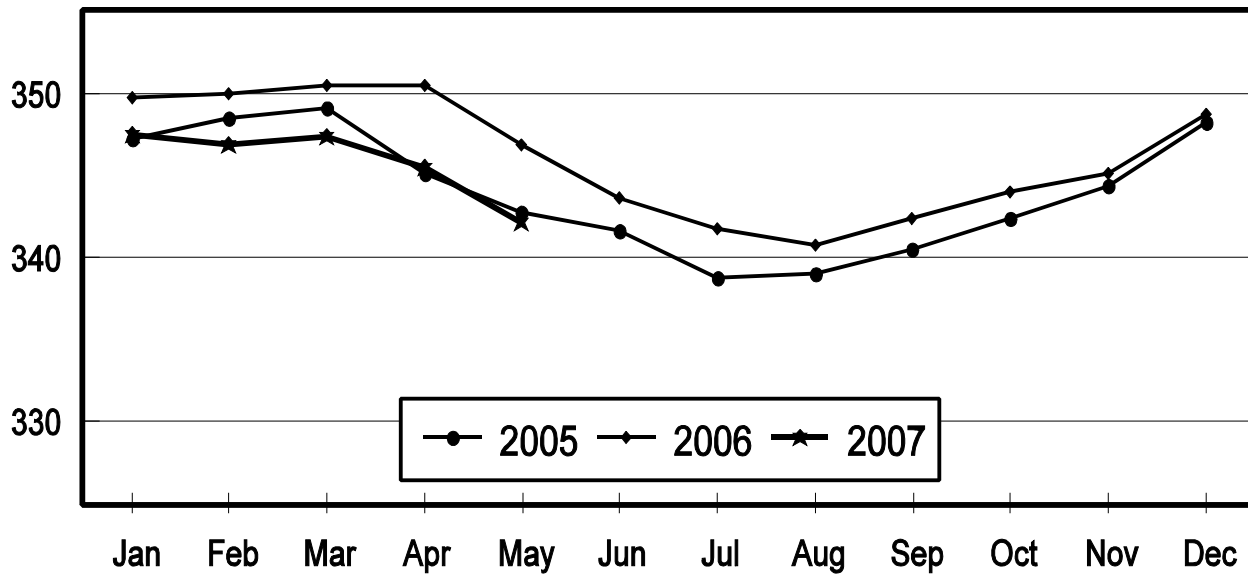
² December preceding year.

All Layers: Inventory

United States, 2005 - 2007

First of the Month

Million Layers

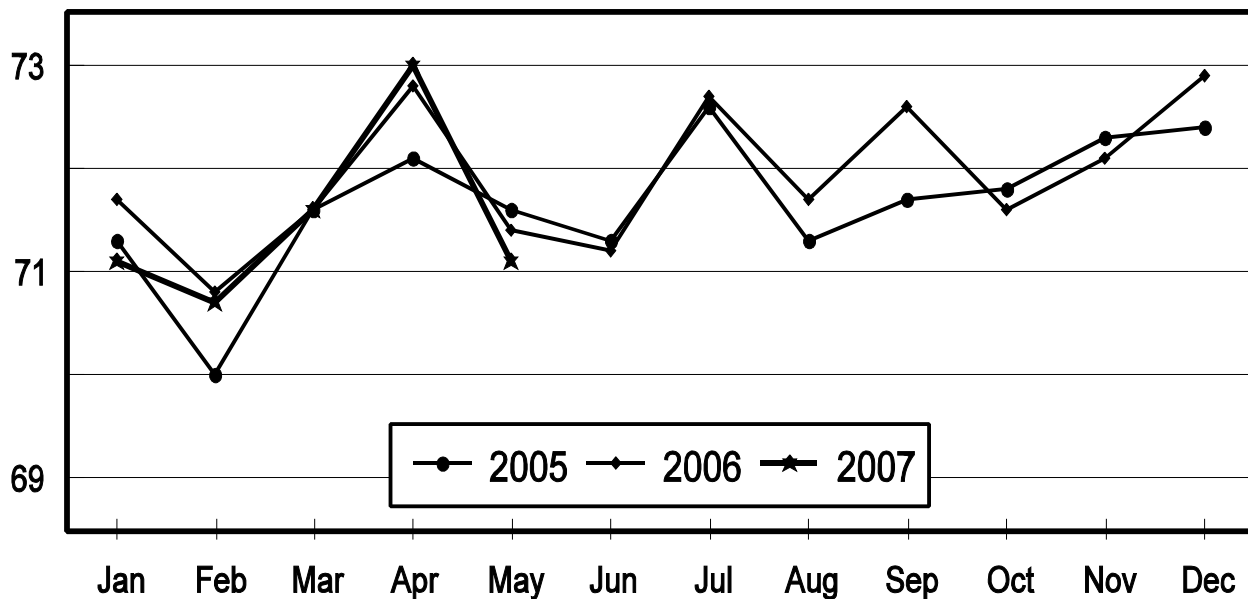


All Layers: Rate of Lay

United States, 2005 - 2007

First of the Month

Eggs Per 100 Layers



**Layers and Eggs: Layers on Hand and Eggs Produced by Type,
and Forced Molt, United States, March-April 2006-07¹**

Item	Unit	2006	2007 ²	2007 as % of 2006
Layers During Mar	1,000			
All Layers		350,470	346,437	99
Table Egg Type		291,440	287,195	99
Hatching Egg Type		59,030	59,242	100
Broiler-Type Hatching		56,157	56,426	100
Egg-Type Hatching		2,873	2,816	98
Eggs per 100 Layers During Mar	Number			
All Layers		2,238	2,243	100
Table Egg Type		2,310	2,314	100
Hatching Egg Type		1,884	1,896	101
Broiler-Type Hatching		1,857	1,870	101
Egg-Type Hatching		2,402	2,415	101
Eggs Produced During Mar	Million			
All Layers		7,843	7,769	99
Table Egg Type		6,732	6,646	99
Hatching Egg Type		1,112	1,123	101
Broiler-Type Hatching		1,043	1,055	101
Egg-Type Hatching		69	68	99
Layers on Apr 1	1,000			
All Layers		350,453	345,516	99
Table Egg Type		291,771	286,411	98
Hatching Egg Type		58,682	59,105	101
Broiler-Type Hatching		55,845	56,305	101
Egg-Type Hatching		2,837	2,800	99
Eggs per 100 Layers on Apr 1	Number			
All Layers		72.8	73.0	100
Table Egg Type		75.2	75.3	100
Hatching Egg Type		60.8	61.4	101
Broiler-Type Hatching		59.9	60.6	101
Egg-Type Hatching		79.1	78.8	100
Forced Molt Layers on Apr 1	Percent			
Percent Being Molted		2.3	2.8	122
Percent with Molt Completed		24.9	23.4	94
Layers Sold for Slaughter During Mar	1,000	14,100	12,332	87
Layers Rendered, Died, Destroyed, Composted or Disappeared For Any Reason During Mar	1,000	6,722	8,116	121
Pullets on Apr 1	1,000	102,225	99,226	97
Pullets Added During Mar ³	1,000	26,000	21,505	83

¹ Totals may not add due to rounding.

² Revised.

³ Pullet chicks less than 3 days old added to pullet flocks.

**Layers and Eggs: Layers on Hand and Eggs Produced by Type,
and Forced Molt, United States, April-May 2006-07 ¹**

Item	Unit	2006	2007	2007 as % of 2006
Layers During Apr	1,000			
All Layers		348,643	343,825	99
Table Egg Type		289,942	284,580	98
Hatching Egg Type		58,701	59,245	101
Broiler-Type Hatching		55,851	56,406	101
Egg-Type Hatching		2,850	2,839	100
Eggs per 100 Layers During Apr	Number			
All Layers		2,164	2,162	100
Table Egg Type		2,231	2,228	100
Hatching Egg Type		1,831	1,845	101
Broiler-Type Hatching		1,803	1,821	101
Egg-Type Hatching		2,386	2,325	97
Eggs Produced During Apr	Million			
All Layers		7,543	7,434	99
Table Egg Type		6,468	6,341	98
Hatching Egg Type		1,075	1,093	102
Broiler-Type Hatching		1,007	1,027	102
Egg-Type Hatching		68	66	97
Layers on May 1	1,000			
All Layers		346,809	342,094	99
Table Egg Type		288,092	282,727	98
Hatching Egg Type		58,717	59,367	101
Broiler-Type Hatching		55,860	56,496	101
Egg-Type Hatching		2,857	2,871	100
Eggs per 100 Layers on May 1	Number			
All Layers		71.4	71.1	100
Table Egg Type		73.5	73.1	99
Hatching Egg Type		61.5	61.5	100
Broiler-Type Hatching		60.6	60.7	100
Egg-Type Hatching		79.2	77.2	97
Forced Molt Layers on May 1	Percent			
Percent Being Molted		5.4	5.4	100
Percent with Molt Completed		23.6	22.2	94
Layers Sold for Slaughter During Apr	1,000	14,770	14,180	96
Layers Rendered, Died, Destroyed, Composted or Disappeared For Any Reason During Apr	1,000	9,661	8,325	86
Pullets on May 1	1,000	99,426	99,864	100
Pullets Added During Apr ²	1,000	20,449	21,188	104

¹ Totals may not add due to rounding.

² Pullet chicks less than 3 days old added to pullet flocks.

**Layers and Eggs: Layers on Hand and Eggs Produced by State
and United States, During March 2006-07**

State	Table Egg Layers in Flocks 30,000 and Above		All Layers ¹		Eggs per 100 for All Layers ¹	
	2006	2007	2006	2007	2006	2007
	<i>1,000</i>	<i>1,000</i>	<i>1,000</i>	<i>1,000</i>	<i>Number</i>	<i>Number</i>
AL	1,711	1,279	8,858	8,750	1,930	1,931
AR	4,382	4,563	14,645	14,602	1,926	2,000
CA	19,206	19,072	19,693	19,526	2,189	2,233
CO	3,164	3,245	3,633	3,750	2,450	2,480
CT	2,934	2,843	2,985	2,906	2,446	2,443
FL	10,973	10,201	11,416	10,674	2,295	2,295
GA	9,897	10,021	19,740	19,780	2,107	2,154
HI	453	376	467	388	1,863	1,778
IL	4,390	4,614	4,613	4,846	2,428	2,291
IN	24,077	23,811	24,772	24,486	2,301	2,279
IA	51,455	51,456	52,257	52,367	2,289	2,217
ME	4,000	3,963	4,075	4,021	2,282	2,189
MD	2,455	2,413	2,595	2,543	2,274	2,281
MI	8,172	8,869	8,436	9,133	2,418	2,442
MN	10,816	10,269	11,292	10,755	2,258	2,287
MS	1,646	1,687	6,638	6,631	2,004	1,991
MO	6,152	5,894	7,317	7,088	2,241	2,257
NE	11,742	11,148	11,817	11,223	2,327	2,290
NY	3,543	3,605	3,788	4,129	2,402	2,422
NC	3,350	3,992	11,081	11,877	2,003	2,054
OH	28,526	27,123	29,053	27,687	2,261	2,304
OR	2,550	2,293	2,723	2,471	2,350	2,428
PA	21,908	21,038	23,818	22,679	2,381	2,416
SC	3,880	3,611	5,096	4,920	2,119	2,093
SD	3,184	3,067	3,284	3,167	2,284	2,305
TX	14,673	14,484	19,247	18,895	2,265	2,297
VA	1,486	1,393	3,389	3,256	2,095	2,181
WA	4,747	4,697	4,815	4,764	2,305	2,330
WI	4,280	4,471	4,822	5,038	2,343	2,322
Oth Sts ²	15,906	15,868	24,105	24,085	2,215	2,230
US	285,658	281,366	350,470	346,437	2,238	2,243

¹ Includes all layers and eggs produced in both table egg and hatching egg flocks regardless of size.

² Not published separately to avoid disclosing data for individual operations.

**Layers and Eggs: Layers on Hand and Eggs Produced by State
and United States, During April 2006-07**

State	Table Egg Layers in Flocks 30,000 and Above		All Layers ¹		Eggs per 100 for All Layers ¹	
	2006	2007	2006	2007	2006	2007
	<i>1,000</i>	<i>1,000</i>	<i>1,000</i>	<i>1,000</i>	<i>Number</i>	<i>Number</i>
AL	1,691	1,206	8,917	8,623	1,828	1,879
AR	4,402	4,465	14,558	14,439	1,868	1,925
CA	19,373	18,913	19,860	19,355	2,100	2,118
CO	3,169	3,216	3,635	3,737	2,366	2,328
CT	2,814	2,943	2,865	3,004	2,339	2,330
FL	10,707	9,836	11,111	10,315	2,232	2,220
GA	10,025	9,815	19,836	19,593	2,011	2,042
HI	445	368	461	380	1,800	1,763
IL	4,470	4,508	4,699	4,740	2,192	2,110
IN	23,945	23,630	24,637	24,283	2,232	2,211
IA	51,842	51,534	52,645	52,475	2,207	2,180
ME	3,960	3,913	4,033	3,977	2,157	2,188
MD	2,447	2,336	2,589	2,478	2,240	2,300
MI	7,929	8,826	8,192	9,090	2,356	2,387
MN	10,626	10,146	11,113	10,641	2,205	2,255
MS	1,654	1,597	6,494	6,515	1,971	1,903
MO	6,004	5,732	7,157	6,880	2,208	2,238
NE	11,698	11,033	11,773	11,108	2,183	2,152
NY	3,554	3,619	3,808	4,147	2,311	2,339
NC	3,332	4,182	11,060	12,075	1,989	1,988
OH	27,899	26,705	28,423	27,274	2,213	2,196
OR	2,516	2,402	2,700	2,579	2,259	2,326
PA	22,060	20,892	23,947	22,560	2,313	2,336
SC	3,857	3,532	5,103	4,851	2,038	1,958
SD	3,121	3,048	3,221	3,148	2,204	2,224
TX	14,458	14,196	18,950	18,704	2,206	2,203
VA	1,434	1,383	3,337	3,252	2,038	1,999
WA	4,830	4,627	4,898	4,694	2,123	2,237
WI	4,124	4,483	4,651	5,046	2,322	2,220
Oth Sts ²	15,772	15,665	23,970	23,862	2,157	2,137
US	284,158	278,751	348,643	343,825	2,164	2,162

¹ Includes all layers and eggs produced in both table egg and hatching egg flocks regardless of size.

² Not published separately to avoid disclosing data for individual operations.

**Egg Production: By Type, State, and United States,
March 2006-07 ¹**

State	Total Production		Table Eggs ²		Hatching Eggs ²	
	2006	2007	2006	2007	2006	2007 ³
	<i>Million Eggs</i>	<i>Million Eggs</i>	<i>Million Eggs</i>	<i>Million Eggs</i>	<i>Million Eggs</i>	<i>Million Eggs</i>
AL	171	169	40	29	131	140
AR	282	292	103	111	179	181
CA	431	436				
CO	89	93				
CT	73	71				
FL	262	245	253	235	9	10
GA	416	426	229	239	187	187
HI	8.7	6.9	8.7	6.9	0	0
IL	112	111	108	107	4	4
IN	570	558	557	545	13	13
IA	1,196	1,161	1,182	1,146	14	15
ME	93	88				
MD	59	58	58	57	1	1
MI	204	223				
MN	255	246	247	237	8	9
MS	133	132	40	41	93	91
MO	164	160				
NE	275	257	275	257	0	0
NY	91	100				
NC	222	244	82	100	140	144
OH	657	638				
OR	64	60	62	58	2	2
PA	567	548	546	529	21	19
SC	108	103	89	80	19	23
SD	75	73	75	73	0	0
TX	436	434				
VA	71	71	35	37	36	34
WA	111	111				
WI	113	117				
Oth Sts ⁴	534	537	403	406	131	131
US	7,843	7,769	6,732	6,646	1,112	1,123

¹ Totals may not add due to rounding.

² Data by type of flock not shown for some States to avoid disclosing individual operations, data included in US totals.

³ Revised.

⁴ Not published separately to avoid disclosing data for individual operations.

**Egg Production: By Type, State, and United States,
April 2006-07¹**

State	Total Production		Table Eggs ²		Hatching Eggs ²	
	2006	2007	2006	2007	2006	2007
	<i>Million Eggs</i>	<i>Million Eggs</i>	<i>Million Eggs</i>	<i>Million Eggs</i>	<i>Million Eggs</i>	<i>Million Eggs</i>
AL	163	162	34	27	129	135
AR	272	278	99	102	173	176
CA	417	410				
CO	86	87				
CT	67	70				
FL	248	229	240	219	8	10
GA	399	400	219	218	180	182
HI	8.3	6.7	8.3	6.7	0	0
IL	103	100	100	97	3	3
IN	550	537	538	525	12	12
IA	1,162	1,144	1,147	1,128	15	16
ME	87	87				
MD	58	57	57	55	1	2
MI	193	217				
MN	245	240	237	232	8	8
MS	128	124	39	36	89	88
MO	158	154				
NE	257	239	257	239	0	0
NY	88	97				
NC	220	240	83	101	137	139
OH	629	599				
OR	61	60	59	58	2	2
PA	554	527	534	508	20	19
SC	104	95	85	73	19	22
SD	71	70	71	70	0	0
TX	418	412				
VA	68	65	34	32	34	33
WA	104	105				
WI	108	112				
Oth Sts ³	517	510	391	381	126	129
US	7,543	7,434	6,468	6,341	1,075	1,093

¹ Totals may not add due to rounding.

² Data by type of flock not shown for some States to avoid disclosing individual operations, data included in US totals.

³ Not published separately to avoid disclosing data for individual operations.

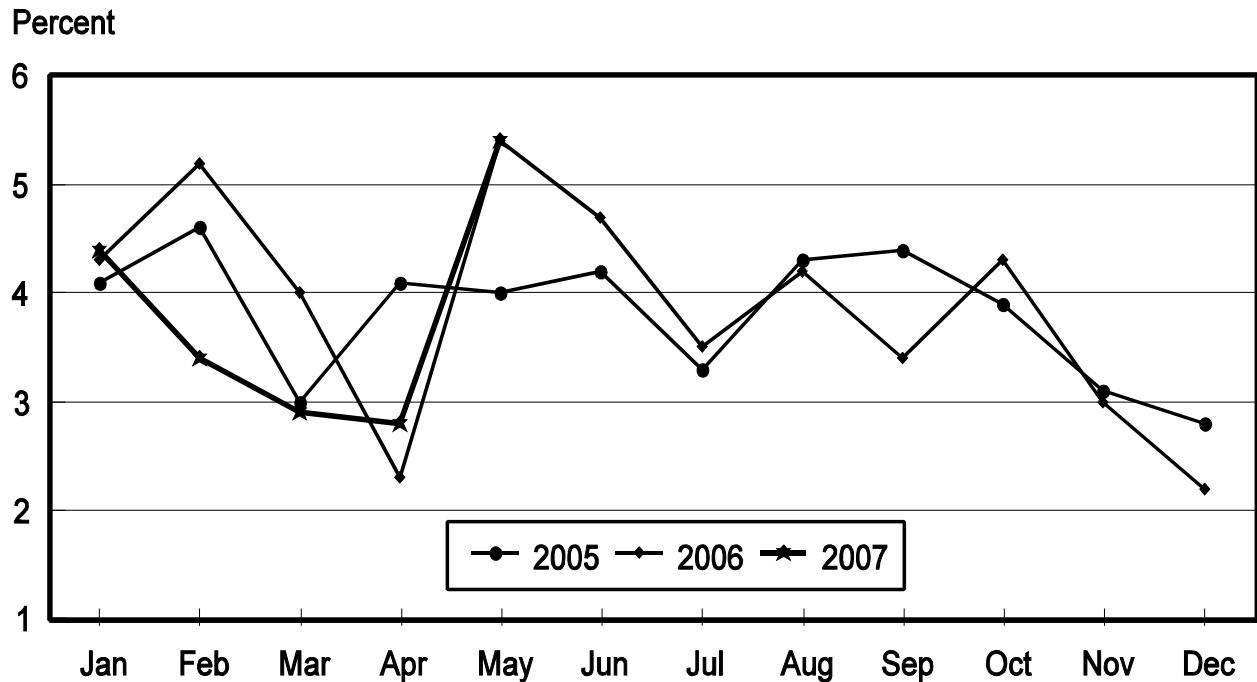
**Forced Molt: Percent of All Layers by Month,
United States, 2006-07 ¹**

Month	Percent Being Molted		Percent with Molt Completed	
	2006	2007	2006	2007
	<i>Percent</i>	<i>Percent</i>	<i>Percent</i>	<i>Percent</i>
Jan	4.3	4.4	23.0	24.5
Feb	5.2	3.4	23.7	24.4
Mar	4.0	2.9	24.4	24.1
Apr ²	2.3	2.8	24.9	23.4
May	5.4	5.4	23.6	22.2
Jun	4.7		24.7	
Jul	3.5		25.6	
Aug	4.2		25.2	
Sep	3.4		25.9	
Oct	4.3		25.8	
Nov	3.0		26.0	
Dec	2.2		26.6	

¹ As of first of month.

² Revised 2007 only.

**All Layers: Percent Being Molted
United States, 2005 - 2007
First of the Month**



**Forced Molt: Percent of All Layers by State
and United States, May 2006-07¹**

State	Percent Being Molted		Percent with Molt Completed	
	2006	2007	2006	2007
	<i>Percent</i>	<i>Percent</i>	<i>Percent</i>	<i>Percent</i>
AL	2.5	1.5	4.5	4.5
AR	5.0	3.0	6.5	11.5
CA	9.0	9.0	35.0	27.5
CO	4.5	6.0	26.0	14.5
CT	0.0	6.0	14.0	11.0
FL	10.0	10.0	35.5	30.5
GA	3.0	5.0	10.5	13.0
HI	7.0	7.0	55.5	59.0
IL	12.5	11.5	19.0	30.0
IN	6.5	6.5	28.0	32.5
IA	5.5	7.0	34.5	36.0
ME	0.0	0.0	0.0	0.0
MD	2.5	8.0	32.0	33.5
MI	6.5	0.0	17.0	21.0
MN	3.5	3.0	33.0	23.5
MS	2.0	5.0	11.0	7.5
MO	4.0	6.0	20.5	17.0
NE	9.5	5.0	29.0	14.0
NY	6.5	3.0	9.0	6.0
NC	1.0	0.5	9.5	7.5
OH	4.0	3.0	22.0	21.5
OR	7.5	14.0	28.5	32.5
PA	4.5	4.5	19.5	11.0
SC	6.0	5.0	28.0	23.5
SD	4.5	5.0	16.5	21.0
TX	4.5	5.5	22.5	21.5
VA	8.0	9.0	12.0	9.5
WA	18.0	6.5	45.0	44.0
WI	1.5	7.0	37.5	25.5
Oth Sts ²	5.0	6.0	21.7	23.1
US	5.4	5.4	23.6	22.2

¹ As of first of month.

² Not published separately to avoid disclosing data for individual operations.

**Hatchery Production: Eggs in Incubators, Chicks Hatched,
and Placements by Type, United States, April-May 2006-07**

Item	2006	2007	2007 as % of 2006
	<i>1,000</i>	<i>1,000</i>	<i>Percent</i>
Egg-Type			
Eggs in Incubators on May 1	37,516	36,848	98
Chicks Hatched During Apr	35,435	39,704	112
Chicks Hatched Jan thru Apr	142,808	153,933	108
Pullets Hatched During Apr for Intended Placements in Hatchery Supply Flocks 7-18 Months Earlier ¹	254 2,951	274 2,855	108 97
Broiler-Type			
Eggs in Incubators on May 1	658,354	679,972	103
Chicks Hatched During Apr	787,457	800,524	102
Chicks Hatched Jan thru Apr	3,143,525	3,132,075	100
Pullets Hatched During Apr for Intended Placements in Hatchery Supply Flocks 7-15 Months Earlier ²	6,593 63,776	6,692 64,340	102 101

¹ 2007 includes pullet chicks hatched Oct 2005 through Sep 2006.

² 2007 includes pullet chicks hatched Jan 2006 through Sep 2006.

**Egg-Type Eggs in Incubators: By Region and United States,
May 1, 2006-07**

Region	2006	2007	2007 as % of 2006
	<i>1,000</i>	<i>1,000</i>	<i>Percent</i>
North Atlantic	4,945	6,250	126
E North Central	7,788	6,904	89
W North Central	9,156	9,247	101
South Atlantic	4,935	4,630	94
South Central	6,081	5,015	82
West	4,611	4,802	104
US	37,516	36,848	98

Regions:

North Atlantic = CT, ME, MA, NH, NJ, NY, PA, RI, VT.

E North Central = IL, IN, MI, OH, WI.

W North Central = IA, KS, MN, MO, NE, ND, SD.

South Atlantic = DE, FL, GA, MD, NC, SC, VA, WV.

South Central = AL, AR, KY, LA, MS, OK, TN, TX.

West = AK, AZ, CA, CO, HI, ID, MT, NM, NV, OR, UT, WA, WY.

**Egg-Type Chicks Hatched: By State and United States,
April 2006-07**

State	During April			Jan-Apr		
	2006	2007	2007 as % of 2006	2006	2007	2007 as % of 2006
	<i>1,000</i>	<i>1,000</i>	<i>Percent</i>	<i>1,000</i>	<i>1,000</i>	<i>Percent</i>
GA	2,236	2,316	104	9,197	9,102	99
IN	4,844	6,003	124	19,960	22,326	112
IA	6,765	7,796	115	26,470	29,698	112
MN	943	1,107	117	3,995	3,801	95
PA	3,741	5,008	134	17,260	19,872	115
Oth Sts ¹	16,906	17,474	103	65,926	69,134	105
US	35,435	39,704	112	142,808	153,933	108

¹ Not published separately to avoid disclosing data for individual operations.

Egg-Type Chicks Hatched: By Month, United States, 2006-07

Month	By Months			Cumulative		
	2006	2007	2007 as % of 2006	2006	2007	2007 as % of 2006
	<i>1,000</i>	<i>1,000</i>	<i>Percent</i>	<i>1,000</i>	<i>1,000</i>	<i>Percent</i>
Jan	35,159	36,926	105	35,159	36,926	105
Feb	33,409	36,766	110	68,568	73,692	107
Mar	38,805	40,537	104	107,373	114,229	106
Apr	35,435	39,704	112	142,808	153,933	108
May	39,744			182,552		
Jun	37,406			219,958		
Jul	32,727			252,685		
Aug	35,611			288,296		
Sep	36,873			325,169		
Oct	36,162			361,331		
Nov	31,554			392,885		
Dec	33,183			426,068		

**Intended Placements: Egg-Type Pullet Chicks for Hatchery Supply
Flocks by Month and Total, United States, 2006-07¹**

Month	Pullet Chicks Hatched		2007 as % of 2006	Cumulative Potential Plcmts Relative to Current Supply Flocks 7-18 Months Earlier ²	
	2006	2007		2006	2007
	<i>1,000</i>	<i>1,000</i>	<i>Percent</i>	<i>1,000</i>	<i>1,000</i>
Jan	223	265	119	2,844	2,870
Feb	200	166	83	2,852	2,947
Mar	261	316	121	2,795	2,970
Apr	254	274	108	2,951	2,855
May	241			2,871	2,889
Jun	198			2,823	2,915
Jul	319			2,835	2,873
Aug	284			2,902	2,915
Sep	260			2,899	2,881
Oct	222			2,850	2,936
Nov	206			2,796	2,956
Dec	205			2,847	
Total	2,873				

¹ Reported by leading breeders. Coverage may not be 100 percent. Includes expected pullet chicks from eggs sold during the preceding month at the rate of 125 pullet chicks per 30 dozen case of eggs.

² For April 2007, includes breeder pullet chicks hatched Oct 2005 through Sep 2006. The 7-18 months represent the first laying cycle. Molting and additional laying cycles will increase the cumulative potential placements.

**Broiler-Type Eggs in Incubators: By Region
and United States, May 1, 2006-07**

Region	2006	2007	2007 as % of 2006
	<i>1,000</i>	<i>1,000</i>	<i>Percent</i>
North Atlantic	12,088	12,258	101
E North Central	9,444	11,084	117
W North Central	30,513	30,083	99
South Atlantic	243,421	254,384	105
South Central	336,757	345,687	103
West	26,131	26,476	101
US	658,354	679,972	103

**Broiler-Type Chicks Hatched: By State
and United States, April 2006-07**

State	During April			Jan-Apr		
	2006	2007	2007 as % of 2006	2006	2007	2007 as % of 2006
	<i>1,000</i>	<i>1,000</i>	<i>Percent</i>	<i>1,000</i>	<i>1,000</i>	<i>Percent</i>
AL	113,390	112,044	99	449,753	439,464	98
AR	101,148	100,668	100	414,169	397,488	96
DE	13,193	14,601	111	55,748	56,745	102
FL	4,897	4,990	102	19,496	19,565	100
GA	122,591	126,528	103	485,707	498,040	103
KY	25,657	27,198	106	100,265	107,938	108
LA	14,583	14,176	97	58,528	54,507	93
MD	30,580	31,478	103	124,025	122,074	98
MS	66,936	69,012	103	266,344	269,220	101
NC	65,635	70,018	107	266,401	272,159	102
OK	22,805	23,716	104	91,973	93,112	101
PA	14,340	13,830	96	55,460	54,873	99
SC	18,264	18,814	103	73,389	76,043	104
TX	53,672	54,638	102	218,362	209,681	96
VA	23,616	23,119	98	92,250	89,480	97
CA, MO, TN, & WV	72,055	72,142	100	281,531	282,676	100
19 Sts ¹	763,362	776,972	102	3,053,401	3,043,065	100
Oth Sts ²	24,095	23,552	98	90,124	89,010	99
US	787,457	800,524	102	3,143,525	3,132,075	100

¹ States in the weekly hatchery production estimating program.

² Not published separately to avoid disclosing data for individual operations.

Broiler-Type Chicks Hatched: By Month, United States, 2006-07

Month	By Months			Cumulative		
	2006	2007	2007 as % of 2006	2006	2007	2007 as % of 2006
	<i>1,000</i>	<i>1,000</i>	<i>Percent</i>	<i>1,000</i>	<i>1,000</i>	<i>Percent</i>
Jan	804,801	797,066	99	804,801	797,066	99
Feb	733,425	723,753	99	1,538,226	1,520,819	99
Mar	817,842	810,732	99	2,356,068	2,331,551	99
Apr	787,457	800,524	102	3,143,525	3,132,075	100
May	812,137			3,955,662		
Jun	788,652			4,744,314		
Jul	801,537			5,545,851		
Aug	810,030			6,355,881		
Sep	772,258			7,128,139		
Oct	772,942			7,901,081		
Nov	729,946			8,631,027		
Dec	796,523			9,427,550		

**Intended Placements: Broiler-Type Pullet Chicks for Hatchery
Supply Flocks by Month and Total, 2006-07 ¹**

Month	Pullet Chicks Hatched		2007 as % of 2006	Cumulative Potential Plcmts Relative to Current Supply Flocks 7-15 Months Earlier ²	
	2006	2007		2006	2007
	<i>1,000</i>	<i>1,000</i>	<i>Percent</i>	<i>1,000</i>	<i>1,000</i>
US Place- ments					
Jan	6,825	7,015	103	62,860	64,544
Feb	7,593	7,071	93	63,060	64,056
Mar ³	7,012	7,135	102	63,416	64,389
Apr	6,593	6,692	102	63,776	64,340
May	7,531			64,311	64,259
Jun	7,636			64,284	64,284
Jul	6,456			64,319	64,448
Aug	7,631			64,344	64,870
Sep	7,063			64,154	64,410
Oct	6,744			64,057	63,909
Nov	7,618			63,993	64,145
Dec	7,176			64,040	
Annual Total	85,878				
Total Place- ments ⁴					
Jan	8,018	8,772	109		
Feb	9,026	8,811	98		
Mar ⁵	8,415	9,025	107		
Apr	7,558	8,358	111		
May	8,930				
Jun	9,144				
Jul	7,845				
Aug	9,170				
Sep	8,742				
Oct	8,028				
Nov	9,550				
Dec	8,700				
Annual Total	103,126				

¹ Reported by leading breeders. Coverage may not be 100 percent. Includes expected pullet chicks from eggs sold during the preceding month at the rate of 125 pullet chicks per 30 dozen case of eggs.

² For Apr 2007, includes breeder pullet chicks hatched Jan 2006 through Sep 2006.

³ Revised 2007 pullet chicks hatched and cumulative placements for October 2007.

⁴ U.S. production of intended placements worldwide.

⁵ Revised 2007 only.

Reliability of Chicken and Eggs Estimates

Survey Procedures: Primary data for the "**Chickens and Eggs**" report are from weekly and/or monthly questionnaires sent to producers. An attempt is made to collect information for layer and egg estimates from each known contractor and independent producer who has at least 30,000 table egg layers, flocks of hatchery supply layers, or pullet only operations with at least 500 pullets. Coverage for operations with less than 30,000 table egg layers are estimated each month based on data reported in December. Approximately 650 contractors, independent egg producers, and pullet only operations are contacted each month. All known hatcheries, approximately 300, are contacted for information on a weekly and/or monthly basis.

Estimating Procedures: Sound statistical methodology is employed to derive estimates from the reported data. All data are checked for unusual values. Data from each operation are compared to their own past operating profile and to trends from similar operations. Data for missing operations are estimated based on similar operations or historical data. NASS field offices prepare these estimates by using a combination of survey indications and historic trends. Individual State estimates are reviewed by the Agricultural Statistics Board for reasonableness. Individual hatchery data are summed to State, regional, and U.S. totals.

For chicken hatcheries, chicks hatched consist of all chicks of domesticated breeds including males and chicks destined for hatchery supply flocks and research purposes. Eggs set are eggs in incubators for the purpose of hatching. The relationship of egg-type chicks hatched to chicken inventory and poultry marketings are carefully monitored. The disposition of egg-type chicks hatched prior to placement into the laying flock can vary significantly, which can make comparisons to changes in layer inventory inconsistent over time. Broiler chicks placed are specifically placed on feed for meat production. Intended placement data reported by leading breeders include pullet chicks expected from eggs sold the preceding month. The breeders in this report account for a large percentage of replacement pullets for hatchery supply flocks. Production of replacement pullets by these breeders indicates the number of pullets available to hatchery supply flocks several months before the pullets will actually move into the flocks. "Hatchery Supply Flocks" include all generations of layers which could lay eggs to supply a hatchery. This includes the generations of parents, grandparents, great-grandparents, pedigree, etc. Also included are research flocks, vaccine flocks, and specific pathogen-free flocks. The broiler cumulative potential placements are a moving total of the intended placements 7-15 months earlier. The egg-type cumulative potential placements of 7-18 months represent the first laying cycle. Molting and additional laying cycles will increase the cumulative potential placements of egg-type hatching flocks.

Revision Policy: The previous month's estimates are subject to revision if late reports or corrected data indicates a different level. Additionally, revisions after the monthly report will be made at the end of the marketing year and published in the annual reports of "**Chickens and Eggs Summary**" and "**Hatchery Production**".

Reliability: Estimates are based on a census of all known contractors and independent producers who have at least 30,000 table egg layers, flocks of hatchery supply layers, pullet only operations with at least 500 pullets, or operating hatcheries and therefore, have no sampling error. However, estimates are subject to errors such as omission, duplication, and mistakes in reporting, recording, and processing the data. While these errors cannot be measured directly, they are minimized through strict quality controls in the data collection process and a careful review of all reported data for consistency and reasonableness.

Information Contacts

Listed below are the commodity specialists in the Livestock Branch of the National Agricultural Statistics Service to contact for additional information.

Dan Kerestes, Chief, Livestock Branch	(202) 720-3570
Darin Jantzi, Head, Poultry and Specialty Commodities Section	(202) 720-3570
David Colwell - Cold Storage	(202) 720-8784
Fleming Gibson - Egg Products, Poultry Slaughter, Catfish Processing, Mink	(202) 690-3237
Darin Jantzi - Layers, Eggs	(202) 720-3570
Sharyn Lavender - Broiler Hatchery, Chicken Hatchery, Honey	(202) 720-3244
Toby Paterson - Catfish Production, Trout Production, Census of Aquaculture, Turkey Hatchery, Turkeys Raised	(202) 720-0585

ACCESS TO REPORTS!!

For your convenience, there are several ways to obtain NASS reports, data products, and services:

INTERNET ACCESS

All NASS reports are available free of charge on the worldwide Internet. For access, connect to the Internet and go to the NASS Home Page at: www.nass.usda.gov.

E-MAIL SUBSCRIPTION

All NASS reports are available by subscription free of charge direct to your e-mail address. Starting with the NASS Home Page at www.nass.usda.gov, under the right navigation, *Receive reports by Email*, click on **National** or **State**. Follow the instructions on the screen.

PRINTED REPORTS OR DATA PRODUCTS

CALL OUR TOLL-FREE ORDER DESK: 800-999-6779 (U.S. and Canada)
Other areas, please call 703-605-6220 FAX: 703-605-6900
(Visa, MasterCard, check, or money order acceptable for payment.)

ASSISTANCE

For **assistance** with general agricultural statistics or further information about NASS or its products or services, contact the **Agricultural Statistics Hotline** at **800-727-9540**, 7:30 a.m. to 4:00 p.m. ET, or e-mail: nass@nass.usda.gov.

The U.S. Department of Agriculture (USDA) prohibits discrimination in all its programs and activities on the basis of race, color, national origin, age, disability, and where applicable, sex, marital status, familial status, parental status, religion, sexual orientation, genetic information, political beliefs, reprisal, or because all or a part of an individual's income is derived from any public assistance program. (Not all prohibited bases apply to all programs.) Persons with disabilities who require alternative means for communication of program information (Braille, large print, audiotape, etc.) should contact USDA's TARGET Center at (202) 720-2600 (voice and TDD).

To file a complaint of discrimination, write to USDA, Director, Office of Civil Rights, 1400 Independence Avenue, S.W., Washington, D.C. 20250-9410, or call (800) 795-3272 (voice) or (202) 720-6382 (TDD). USDA is an equal opportunity provider and employer.