



NASS

FACT FINDERS FOR AGRICULTURE
UNITED STATES DEPARTMENT OF AGRICULTURE

Washington, D.C.

Chickens And Eggs

Released August 21, 2007, by the National Agricultural Statistics Service (NASS), Agricultural Statistics Board, U.S. Department of Agriculture. For information on *Chickens and Eggs* call Sharyn Lavender at (202) 720-3244, office hours 7:30 a.m. to 4:00 p.m. ET.

July Egg Production Down 1 Percent

U.S. egg production totaled 7.57 billion during July 2007, down 1 percent from last year. Production included 6.44 billion table eggs, and 1.14 billion hatching eggs, of which 1.07 billion were broiler-type and 66 million were egg-type. The total number of layers during July 2007 averaged 339 million, down 1 percent from last year. July egg production per 100 layers was 2,234 eggs, down slightly from July 2006.

All layers in the U.S. on August 1, 2007 totaled 340 million, down slightly from last year. The 340 million layers consisted of 281 million layers producing table or market type eggs, 56.2 million layers producing broiler-type hatching eggs, and 2.72 million layers producing egg-type hatching eggs. Rate of lay per day on August 1, 2007, averaged 72.1 eggs per 100 layers, up 1 percent from August 1, 2006.

Egg-Type Chicks Hatched Up 9 Percent

Egg-type chicks hatched during July 2007 totaled 35.6 million, up 9 percent from July 2006. Eggs in incubators totaled 33.7 million on August 1, 2007, up 10 percent from a year ago.

Domestic placements of egg-type pullet chicks for future hatchery supply flocks by leading breeders totaled 183,000 during July 2007, down 43 percent from July 2006.

Broiler-Type Chicks Hatched Up 2 Percent

Broiler-type chicks hatched during July 2007 totaled 821 million, up 2 percent from July 2006. Eggs in incubators totaled 676 million on August 1, 2007, up 2 percent from a year earlier.

Leading breeders placed 6.91 million broiler-type pullet chicks for future domestic hatchery supply flocks during July 2007, up 7 percent from July 2006.

Contents

Page

U.S. Average Number of Layers on Hand and Egg Production	1
U.S. Layers on Hand and Eggs Produced by Type, Forced Molt, and Pullets	3
Layers on Hand and Eggs Produced by State	5
Egg Production by Type and State	7
Forced Molt	9
Egg-Type Hatchery	11
Egg-Type Intended Placements	13
Broiler-Type Hatchery	13
Broiler-Type Intended Placements	15
Procedures and Reliability	16
Information Contacts	16

**All Layers: Average Number on Hand During the Month,
United States, 2005-07**

Month	2005	2006	2007
	<i>1,000 Layers</i>	<i>1,000 Layers</i>	<i>1,000 Layers</i>
Dec ¹	345,615	348,810	348,098
Jan	347,874	349,677	347,133
Feb	348,784	350,018	347,079
Mar	347,120	350,470	346,437
Apr	343,927	348,643	343,814
May	342,162	345,223	341,052
Jun ²	340,200	342,685	339,130
Jul	338,917	341,252	338,975
Aug	339,777	341,540	
Sep	341,433	343,147	
Oct	343,381	344,538	
Nov	346,314	346,936	

¹ December preceding year.

² Revised 2007 only.

**Eggs: Production During the Month by Type,
United States, 2006-07 ¹**

Month	Total Eggs		Table Eggs		Hatching Eggs	
	2006	2007	2006	2007	2006	2007
	<i>Million Eggs</i>	<i>Million Eggs</i>	<i>Million Eggs</i>	<i>Million Eggs</i>	<i>Million Eggs</i>	<i>Million Eggs</i>
Dec ²	7,793	7,777	6,697	6,683	1,096	1,094
Jan	7,727	7,637	6,622	6,535	1,105	1,102
Feb	6,980	6,916	5,983	5,918	997	998
Mar	7,843	7,769	6,732	6,646	1,112	1,123
Apr	7,543	7,435	6,468	6,341	1,075	1,094
May	7,637	7,591	6,520	6,449	1,117	1,143
Jun ³	7,401	7,355	6,336	6,243	1,066	1,113
Jul	7,645	7,574	6,550	6,436	1,095	1,138
Aug	7,647		6,557		1,090	
Sep	7,430		6,379		1,051	
Oct	7,678		6,600		1,078	
Nov	7,549		6,506		1,043	
During Year	90,877		77,954		12,927	

¹ Totals may not add due to rounding.

² December preceding year.

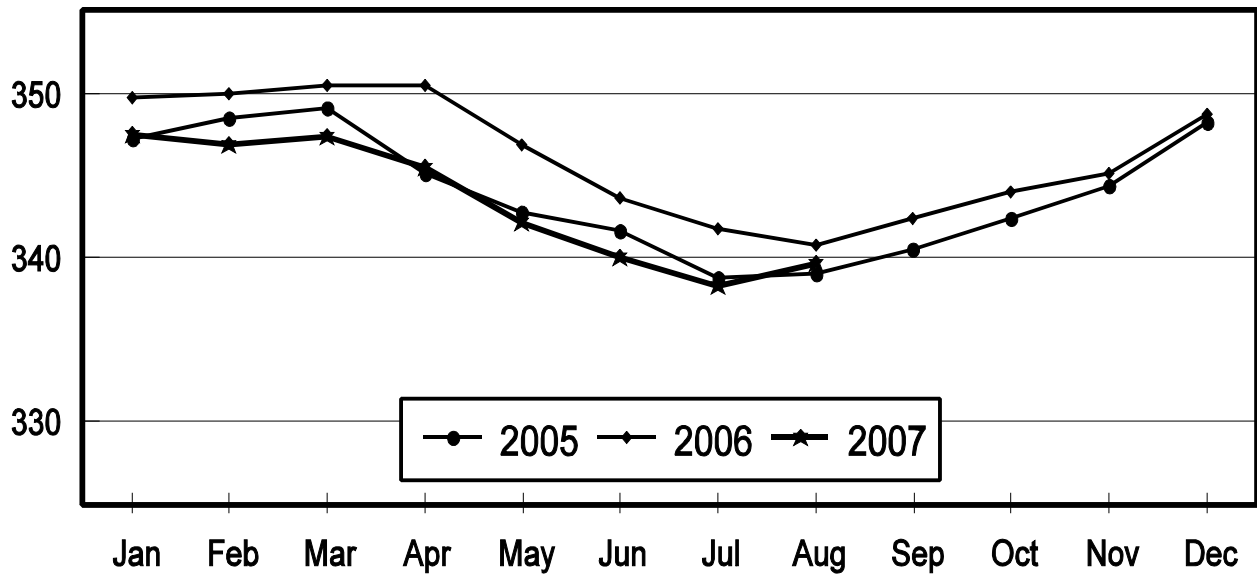
³ Revised 2007 only.

All Layers: Inventory

United States, 2005 - 2007

First of the Month

Million Layers

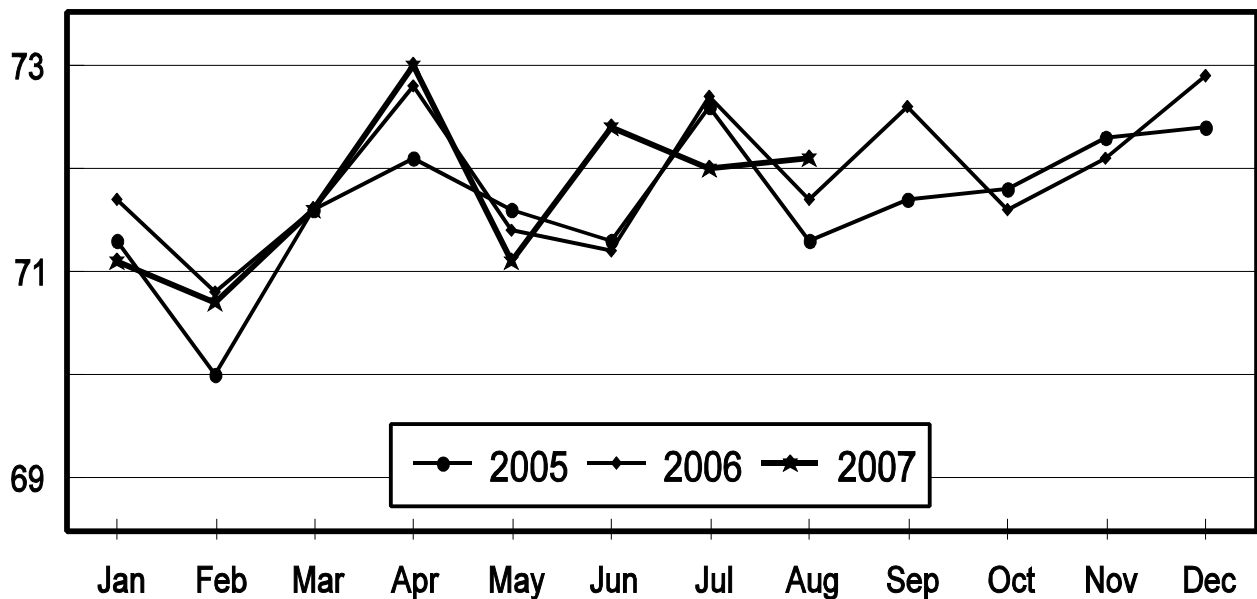


All Layers: Rate of Lay

United States, 2005 - 2007

First of the Month

Eggs Per 100 Layers



**Layers and Eggs: Layers on Hand and Eggs Produced by Type,
and Forced Molt, United States, June-July 2006-07¹**

Item	Unit	2006	2007 ²	2007 as % of 2006
Layers During Jun	1,000			
All Layers		342,685	339,130	99
Table Egg Type		284,934	279,430	98
Hatching Egg Type		57,751	59,700	103
Broiler-Type Hatching		54,918	56,911	104
Egg-Type Hatching		2,833	2,789	98
Eggs per 100 Layers During Jun	Number			
All Layers		2,160	2,169	100
Table Egg Type		2,224	2,234	100
Hatching Egg Type		1,846	1,864	101
Broiler-Type Hatching		1,821	1,841	101
Egg-Type Hatching		2,330	2,331	100
Eggs Produced During Jun	Million			
All Layers		7,401	7,355	99
Table Egg Type		6,336	6,243	99
Hatching Egg Type		1,066	1,113	104
Broiler-Type Hatching		1,000	1,048	105
Egg-Type Hatching		66	65	98
Layers on Jul 1	1,000			
All Layers		341,733	338,230	99
Table Egg Type		284,358	278,911	98
Hatching Egg Type		57,375	59,319	103
Broiler-Type Hatching		54,558	56,572	104
Egg-Type Hatching		2,817	2,747	98
Eggs per 100 Layers on Jul 1	Number			
All Layers		72.7	72.0	99
Table Egg Type		75.0	74.1	99
Hatching Egg Type		61.4	62.2	101
Broiler-Type Hatching		60.7	61.4	101
Egg-Type Hatching		75.3	78.4	104
Forced Molt Layers on Jul 1	Percent			
Percent Being Molted		3.5	4.0	114
Percent with Molt Completed		25.6	24.1	94
Layers Sold for Slaughter During Jun	1,000	13,588	14,509	107
Layers Rendered, Died, Destroyed, Composted or Disappeared For Any Reason During Jun	1,000	7,061	7,234	102
Pullets on Jul 1	1,000	101,469	104,023	103
Pullets Added During Jun ³	1,000	22,152	23,138	104

¹ Totals may not add due to rounding.

² Revised.

³ Pullet chicks less than 3 days old added to pullet flocks.

**Layers and Eggs: Layers on Hand and Eggs Produced by Type,
and Forced Molt, United States, July-August 2006-07 ¹**

Item	Unit	2006	2007	2007 as % of 2006
Layers During Jul	1,000			
All Layers		341,252	338,975	99
Table Egg Type		283,888	279,841	99
Hatching Egg Type		57,364	59,134	103
Broiler-Type Hatching		54,571	56,394	103
Egg-Type Hatching		2,793	2,740	98
Eggs per 100 Layers During Jul	Number			
All Layers		2,240	2,234	100
Table Egg Type		2,307	2,300	100
Hatching Egg Type		1,909	1,924	101
Broiler-Type Hatching		1,886	1,901	101
Egg-Type Hatching		2,363	2,409	102
Eggs Produced During Jul	Million			
All Layers		7,645	7,574	99
Table Egg Type		6,550	6,436	98
Hatching Egg Type		1,095	1,138	104
Broiler-Type Hatching		1,029	1,072	104
Egg-Type Hatching		66	66	100
Layers on Aug 1	1,000			
All Layers		340,728	339,673	100
Table Egg Type		283,401	280,746	99
Hatching Egg Type		57,327	58,927	103
Broiler-Type Hatching		54,569	56,205	103
Egg-Type Hatching		2,758	2,722	99
Eggs per 100 Layers on Aug 1	Number			
All Layers		71.7	72.1	101
Table Egg Type		73.8	74.2	101
Hatching Egg Type		61.4	61.9	101
Broiler-Type Hatching		60.6	61.1	101
Egg-Type Hatching		76.2	77.1	101
Forced Molt Layers on Aug 1	Percent			
Percent Being Molted		4.2	3.4	81
Percent with Molt Completed		25.2	23.4	93
Layers Sold for Slaughter During Jul	1,000	11,434	12,710	111
Layers Rendered, Died, Destroyed, Composted or Disappeared For Any Reason During Jul	1,000	9,197	7,424	81
Pullets on Aug 1	1,000	101,755	102,320	101
Pullets Added During Jul ²	1,000	21,265	20,887	98

¹ Totals may not add due to rounding.

² Pullet chicks less than 3 days old added to pullet flocks.

**Layers and Eggs: Layers on Hand and Eggs Produced by State
and United States, During June 2006-07**

State	Table Egg Layers in Flocks 30,000 and Above		All Layers ¹		Eggs per 100 for All Layers ¹	
	2006	2007 ²	2006	2007 ²	2006	2007 ²
	<i>1,000</i>	<i>1,000</i>	<i>1,000</i>	<i>1,000</i>	<i>Number</i>	<i>Number</i>
AL	1,476	1,166	8,722	9,239	1,857	1,840
AR	4,143	4,109	13,997	14,081	1,886	1,917
CA	18,477	18,609	18,997	18,946	2,053	2,101
CO	3,213	3,183	3,725	3,725	2,416	2,362
CT	2,639	2,773	2,695	2,829	2,152	2,262
FL	10,362	9,912	10,740	10,434	2,169	2,214
GA	9,431	9,247	19,107	19,099	2,015	2,005
HI	429	354	445	368	1,843	1,875
IL	4,612	4,705	4,849	4,931	2,207	2,190
IN	23,698	23,545	24,432	24,271	2,239	2,221
IA	50,832	51,258	51,571	52,170	2,185	2,222
ME	4,014	3,761	4,083	3,809	2,082	2,205
MD	2,564	2,384	2,704	2,534	2,330	2,170
MI	8,189	8,552	8,451	8,813	2,307	2,326
MN	10,548	10,077	11,041	10,550	2,201	2,218
MS	1,648	1,559	6,487	6,430	1,973	1,928
MO	6,116	5,774	7,256	6,868	2,219	2,228
NE	11,524	10,818	11,599	10,893	2,121	2,176
NY	3,571	3,590	3,821	4,114	2,408	2,358
NC	3,109	4,245	10,776	12,173	1,977	2,029
OH	27,562	25,118	28,080	25,704	2,183	2,233
OR	2,466	2,202	2,660	2,366	2,406	2,325
PA	21,863	20,659	23,788	22,283	2,346	2,320
SC	3,965	3,478	5,123	4,753	2,011	2,041
SD	3,119	2,986	3,219	3,086	2,175	2,203
TX	14,019	13,938	18,380	18,361	2,220	2,217
VA	1,298	1,315	3,093	3,267	2,069	2,020
WA	4,729	4,629	4,795	4,694	2,377	2,258
WI	4,084	4,397	4,596	4,954	2,263	2,261
Oth Sts ³	15,450	15,256	23,453	23,385	2,158	2,138
US	279,150	273,599	342,685	339,130	2,160	2,169

¹ Includes all layers and eggs produced in both table egg and hatching egg flocks regardless of size.

² Revised.

³ Not published separately to avoid disclosing data for individual operations.

**Layers and Eggs: Layers on Hand and Eggs Produced by State
and United States, During July 2006-07**

State	Table Egg Layers in Flocks 30,000 and Above		All Layers ¹		Eggs per 100 for All Layers ¹	
	2006	2007	2006	2007	2006	2007
	<i>1,000</i>	<i>1,000</i>	<i>1,000</i>	<i>1,000</i>	<i>Number</i>	<i>Number</i>
AL	1,457	1,194	8,562	9,132	1,974	1,949
AR	4,167	4,041	13,976	13,838	1,939	1,973
CA	18,443	18,562	18,957	18,869	2,121	2,157
CO	3,210	3,144	3,703	3,685	2,511	2,469
CT	2,643	2,646	2,703	2,702	2,294	2,443
FL	10,228	10,090	10,619	10,614	2,222	2,308
GA	9,399	9,387	19,101	19,121	2,073	2,061
HI	422	353	438	369	1,963	1,897
IL	4,790	4,719	5,028	4,945	2,287	2,285
IN	23,526	23,357	24,251	24,044	2,284	2,283
IA	50,301	51,969	51,038	52,878	2,357	2,275
ME	4,000	3,742	4,065	3,807	2,263	2,285
MD	2,475	2,293	2,607	2,446	2,378	2,249
MI	8,264	8,686	8,521	8,941	2,371	2,371
MN	10,487	10,064	10,934	10,541	2,232	2,258
MS	1,610	1,564	6,361	6,457	2,075	2,013
MO	6,094	5,600	7,206	6,717	2,304	2,263
NE	11,665	10,748	11,740	10,823	2,232	2,347
NY	3,718	3,692	3,976	4,216	2,515	2,443
NC	3,134	4,359	10,718	12,137	2,053	2,060
OH	26,986	25,253	27,495	25,815	2,233	2,270
OR	2,506	2,240	2,682	2,414	2,424	2,361
PA	21,601	20,401	23,503	22,031	2,438	2,415
SC	3,853	3,357	5,018	4,644	2,112	2,132
SD	3,178	3,043	3,278	3,143	2,227	2,259
TX	14,252	13,999	18,702	18,502	2,246	2,259
VA	1,325	1,316	3,159	3,196	1,994	2,065
WA	4,627	4,531	4,691	4,596	2,345	2,328
WI	4,089	4,216	4,602	4,774	2,303	2,409
Oth Sts ²	15,654	15,442	23,618	23,578	2,223	2,188
US	278,104	274,008	341,252	338,975	2,240	2,234

¹ Includes all layers and eggs produced in both table egg and hatching egg flocks regardless of size.

² Not published separately to avoid disclosing data for individual operations.

**Egg Production: By Type, State, and United States,
June 2006-07¹**

State	Total Production		Table Eggs ²		Hatching Eggs ²	
	2006	2007 ³	2006	2007	2006	2007 ³
	<i>Million Eggs</i>	<i>Million Eggs</i>	<i>Million Eggs</i>	<i>Million Eggs</i>	<i>Million Eggs</i>	<i>Million Eggs</i>
AL	162	170	34	25	128	145
AR	264	270	90	92	174	178
CA	390	398				
CO	90	88				
CT	58	64				
FL	233	231	227	221	6	10
GA	385	383	205	199	180	184
HI	8.2	6.9	8.2	6.9	0	0
IL	107	108	103	105	4	3
IN	547	539	534	527	13	12
IA	1,127	1,159	1,114	1,144	13	15
ME	85	84				
MD	63	55	61	53	2	2
MI	195	205				
MN	243	234	235	226	8	8
MS	128	124	38	36	90	88
MO	161	153				
NE	246	237	246	237	0	0
NY	92	97				
NC	213	247	77	103	136	144
OH	613	574				
OR	64	55	62	53	2	2
PA	558	517	537	498	21	19
SC	103	97	84	76	19	21
SD	70	68	70	68	0	0
TX	408	407				
VA	64	66	32	30	32	36
WA	114	106				
WI	104	112				
Oth Sts ⁴	506	500	384	369	123	131
US	7,401	7,355	6,336	6,243	1,066	1,113

¹ Totals may not add due to rounding.

² Data by type of flock not shown for some States to avoid disclosing individual operations, data included in US totals.

³ Revised.

⁴ Not published separately to avoid disclosing data for individual operations.

**Egg Production: By Type, State, and United States,
July 2006-07¹**

State	Total Production		Table Eggs ²		Hatching Eggs ²	
	2006	2007	2006	2007	2006	2007
	<i>Million Eggs</i>	<i>Million Eggs</i>	<i>Million Eggs</i>	<i>Million Eggs</i>	<i>Million Eggs</i>	<i>Million Eggs</i>
AL	169	178	36	28	133	150
AR	271	273	95	93	176	180
CA	402	407				
CO	93	91				
CT	62	66				
FL	236	245	229	235	7	10
GA	396	394	209	206	187	188
HI	8.6	7.0	8.6	7.0	0	0
IL	115	113	111	109	4	4
IN	554	549	541	537	13	12
IA	1,203	1,203	1,191	1,188	12	15
ME	92	87				
MD	62	55	60	53	2	2
MI	202	212				
MN	244	238	236	229	8	9
MS	132	130	40	38	92	92
MO	166	152				
NE	262	254	262	254	0	0
NY	100	103				
NC	220	250	80	105	140	145
OH	614	586				
OR	65	57	63	55	2	2
PA	573	532	552	513	21	19
SC	106	99	87	77	19	22
SD	73	71	73	71	0	0
TX	420	418				
VA	63	66	30	30	33	36
WA	110	107				
WI	106	115				
Oth Sts ³	525	516	398	384	127	132
US	7,645	7,574	6,550	6,436	1,095	1,138

¹ Totals may not add due to rounding.

² Data by type of flock not shown for some States to avoid disclosing individual operations, data included in US totals.

³ Not published separately to avoid disclosing data for individual operations.

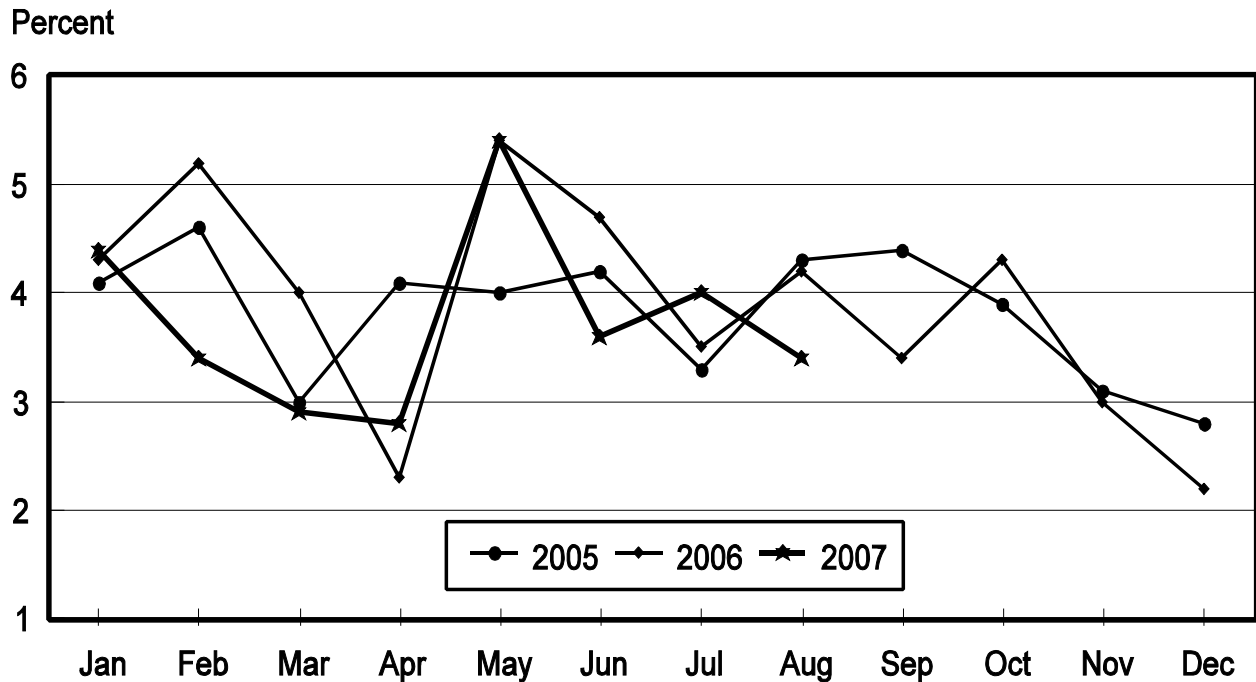
**Forced Molt: Percent of All Layers by Month,
United States, 2006-07¹**

Month	Percent Being Molted		Percent with Molt Completed	
	2006	2007	2006	2007
	<i>Percent</i>	<i>Percent</i>	<i>Percent</i>	<i>Percent</i>
Jan	4.3	4.4	23.0	24.5
Feb	5.2	3.4	23.7	24.4
Mar	4.0	2.9	24.4	24.1
Apr	2.3	2.8	24.9	23.4
May	5.4	5.4	23.6	22.2
Jun	4.7	3.6	24.7	24.0
Jul ²	3.5	4.0	25.6	24.1
Aug	4.2	3.4	25.2	23.4
Sep	3.4		25.9	
Oct	4.3		25.8	
Nov	3.0		26.0	
Dec	2.2		26.6	

¹ As of first of month.

² Revised 2007 only.

All Layers: Percent Being Molted United States, 2005 - 2007 First of the Month



**Forced Molt: Percent of All Layers by State
and United States, August 2006-07 ¹**

State	Percent Being Molted		Percent with Molt Completed	
	2006	2007	2006	2007
	<i>Percent</i>	<i>Percent</i>	<i>Percent</i>	<i>Percent</i>
AL	0.5	0.5	2.5	5.5
AR	3.5	0.0	10.0	13.5
CA	4.5	5.5	38.0	30.0
CO	0.0	1.5	20.5	15.0
CT	0.0	0.0	22.5	11.0
FL	3.0	6.5	36.5	33.0
GA	3.5	1.5	12.0	17.0
HI	5.5	8.5	55.0	60.5
IL	7.5	6.0	30.5	36.5
IN	6.0	7.0	29.0	29.5
IA	5.5	3.5	35.0	36.0
ME	0.0	0.0	0.0	0.0
MD	8.5	0.0	39.0	27.0
MI	5.0	4.0	23.5	21.0
MN	4.0	2.5	35.5	25.0
MS	2.0	1.0	12.5	9.5
MO	2.5	3.5	24.0	17.5
NE	4.5	2.5	27.0	20.5
NY	2.0	2.5	16.0	7.0
NC	0.0	0.0	9.5	9.5
OH	5.5	4.0	25.0	18.5
OR	9.0	8.5	28.5	33.5
PA	2.5	2.0	18.5	12.5
SC	6.5	4.5	37.0	25.5
SD	5.0	5.0	21.0	19.0
TX	3.5	5.0	23.5	24.0
VA	6.5	3.0	6.5	19.5
WA	4.0	5.5	52.5	45.0
WI	5.5	2.0	32.0	36.0
Oth Sts ²	4.8	2.8	24.0	24.1
US	4.2	3.4	25.2	23.4

¹ As of first of month.

² Not published separately to avoid disclosing data for individual operations.

**Hatchery Production: Eggs in Incubators, Chicks Hatched,
and Placements by Type, United States, July-August 2006-07**

Item	2006	2007	2007 as % of 2006
	<i>1,000</i>	<i>1,000</i>	<i>Percent</i>
Egg-Type			
Eggs in Incubators on Aug 1	30,776	33,713	110
Chicks Hatched During Jul	32,727	35,560	109
Chicks Hatched Jan thru Jul	252,685	267,996	106
Pullets Hatched During Jul for Intended Placements in Hatchery Supply Flocks 7-18 Months Earlier ¹	319 2,835	183 2,873	57 101
Broiler-Type			
Eggs in Incubators on Aug 1	661,365	675,750	102
Chicks Hatched During Jul	801,537	820,865	102
Chicks Hatched Jan thru Jul	5,545,851	5,600,745	101
Pullets Hatched During Jul for Intended Placements in Hatchery Supply Flocks 7-15 Months Earlier ²	6,456 64,319	6,912 64,448	107 100

¹ 2007 includes pullet chicks hatched Jan 2006 through Dec 2006.

² 2007 includes pullet chicks hatched Apr 2006 through Dec 2006.

**Egg-Type Eggs in Incubators: By Region and United States,
August 1, 2006-07**

Region	2006	2007	2007 as % of 2006
	<i>1,000</i>	<i>1,000</i>	<i>Percent</i>
North Atlantic	5,038	4,743	94
E North Central	6,362	6,726	106
W North Central	7,396	8,756	118
South Atlantic	3,642	3,866	106
South Central	4,166	4,261	102
West	4,172	5,361	128
US	30,776	33,713	110

Regions:

North Atlantic = CT, ME, MA, NH, NJ, NY, PA, RI, VT.

E North Central = IL, IN, MI, OH, WI.

W North Central = IA, KS, MN, MO, NE, ND, SD.

South Atlantic = DE, FL, GA, MD, NC, SC, VA, WV.

South Central = AL, AR, KY, LA, MS, OK, TN, TX.

West = AK, AZ, CA, CO, HI, ID, MT, NM, NV, OR, UT, WA, WY.

**Egg-Type Chicks Hatched: By State and United States,
July 2006-07**

State	During July			Jan-Jul		
	2006	2007	2007 as % of 2006	2006	2007	2007 as % of 2006
	<i>1,000</i>	<i>1,000</i>	<i>Percent</i>	<i>1,000</i>	<i>1,000</i>	<i>Percent</i>
GA	2,195	2,164	99	15,927	15,694	99
IN	4,569	5,275	115	35,145	38,322	109
IA	6,117	7,286	119	46,644	53,067	114
MN	754	1,094	145	6,642	7,121	107
PA	3,736	4,040	108	30,354	33,099	109
Oth Sts ¹	15,356	15,701	102	117,973	120,693	102
US	32,727	35,560	109	252,685	267,996	106

¹ Not published separately to avoid disclosing data for individual operations.

Egg-Type Chicks Hatched: By Month, United States, 2006-07

Month	By Months			Cumulative		
	2006	2007	2007 as % of 2006	2006	2007	2007 as % of 2006
	<i>1,000</i>	<i>1,000</i>	<i>Percent</i>	<i>1,000</i>	<i>1,000</i>	<i>Percent</i>
Jan	35,159	36,926	105	35,159	36,926	105
Feb	33,409	36,766	110	68,568	73,692	107
Mar	38,805	40,537	104	107,373	114,229	106
Apr	35,435	39,704	112	142,808	153,933	108
May	39,744	38,498	97	182,552	192,431	105
Jun	37,406	40,005	107	219,958	232,436	106
Jul	32,727	35,560	109	252,685	267,996	106
Aug	35,611			288,296		
Sep	36,873			325,169		
Oct	36,162			361,331		
Nov	31,554			392,885		
Dec	33,183			426,068		

**Intended Placements: Egg-Type Pullet Chicks for Hatchery Supply
Flocks by Month and Total, United States, 2006-07¹**

Month	Pullet Chicks Hatched		2007 as % of 2006	Cumulative Potential Plcmts Relative to Current Supply Flocks 7-18 Months Earlier ²	
	2006	2007		2007	2008
	<i>1,000</i>	<i>1,000</i>	<i>Percent</i>	<i>1,000</i>	<i>1,000</i>
Jan	223	265	119	2,870	3,008
Feb	200	166	83	2,947	2,872
Mar	261	316	121	2,970	
Apr	254	274	108	2,855	
May	241	191	79	2,889	
Jun	198	300	152	2,915	
Jul	319	183	57	2,873	
Aug	284			2,915	
Sep	260			2,881	
Oct	222			2,936	
Nov	206			2,956	
Dec	205			2,906	
Total	2,873				

¹ Reported by leading breeders. Coverage may not be 100 percent. Includes expected pullet chicks from eggs sold during the preceding month at the rate of 125 pullet chicks per 30 dozen case of eggs.

² For July 2007, includes breeder pullet chicks hatched Jan 2006 through Dec 2006. The 7-18 months represent the first laying cycle. Molting and additional laying cycles will increase the cumulative potential placements.

**Broiler-Type Eggs in Incubators: By Region
and United States, August 1, 2006-07**

Region	2006	2007	2007 as % of 2006
	<i>1,000</i>	<i>1,000</i>	<i>Percent</i>
North Atlantic	12,574	12,244	97
E North Central	9,190	11,977	130
W North Central	29,292	29,551	101
South Atlantic	243,873	251,122	103
South Central	340,811	346,507	102
West	25,625	24,349	95
US	661,365	675,750	102

**Broiler-Type Chicks Hatched: By State
and United States, July 2006-07**

State	During July			Jan-Jul		
	2006	2007	2007 as % of 2006	2006	2007	2007 as % of 2006
	<i>1,000</i>	<i>1,000</i>	<i>Percent</i>	<i>1,000</i>	<i>1,000</i>	<i>Percent</i>
AL	115,628	115,396	100	794,146	783,116	99
AR	101,842	103,993	102	721,646	711,931	99
DE	14,389	15,728	109	97,208	102,872	106
FL	5,007	5,029	100	34,209	34,536	101
GA	127,517	130,611	102	865,365	889,267	103
KY	25,954	27,947	108	178,304	192,699	108
LA	14,532	14,479	100	102,138	97,655	96
MD	32,462	32,038	99	219,477	218,241	99
MS	66,492	70,283	106	466,148	478,955	103
NC	67,743	71,976	106	471,056	488,021	104
OK	22,598	24,104	107	159,678	165,572	104
PA	14,600	14,316	98	98,754	97,761	99
SC	19,330	19,694	102	130,753	135,939	104
TX	54,444	56,170	103	382,556	377,774	99
VA	23,653	23,662	100	163,241	160,683	98
CA, MO, TN, & WV	72,529	71,968	99	498,607	502,207	101
19 Sts ¹	778,720	797,394	102	5,383,286	5,437,229	101
Oth Sts ²	22,817	23,471	103	162,565	163,516	101
US	801,537	820,865	102	5,545,851	5,600,745	101

¹ States in the weekly hatchery production estimating program.

² Not published separately to avoid disclosing data for individual operations.

Broiler-Type Chicks Hatched: By Month, United States, 2006-07

Month	By Months			Cumulative		
	2006	2007	2007 as % of 2006	2006	2007	2007 as % of 2006
	<i>1,000</i>	<i>1,000</i>	<i>Percent</i>	<i>1,000</i>	<i>1,000</i>	<i>Percent</i>
Jan	804,801	797,066	99	804,801	797,066	99
Feb	733,425	723,753	99	1,538,226	1,520,819	99
Mar	817,842	810,732	99	2,356,068	2,331,551	99
Apr	787,457	800,524	102	3,143,525	3,132,075	100
May	812,137	837,386	103	3,955,662	3,969,461	100
Jun	788,652	810,419	103	4,744,314	4,779,880	101
Jul	801,537	820,865	102	5,545,851	5,600,745	101
Aug	810,030			6,355,881		
Sep	772,258			7,128,139		
Oct	772,942			7,901,081		
Nov	729,946			8,631,027		
Dec	796,523			9,427,550		

**Intended Placements: Broiler-Type Pullet Chicks for Hatchery
Supply Flocks by Month and Total, 2006-07 ¹**

Month	Pullet Chicks Hatched		2007 as % of 2006	Cumulative Potential Plcmts Relative to Current Supply Flocks 7-15 Months Earlier ²	
	2006	2007		2007	2008
	<i>1,000</i>	<i>1,000</i>	<i>Percent</i>	<i>1,000</i>	<i>1,000</i>
US Place- ments					
Jan	6,825	7,015	103	64,544	65,333
Feb	7,593	7,071	93	64,056	65,501
Mar	7,012	7,135	102	64,389	
Apr	6,593	6,692	102	64,340	
May	7,531	8,083	107	64,259	
Jun ³	7,636	7,799	102	64,284	
Jul	6,456	6,912	107	64,448	
Aug	7,631			64,870	
Sep	7,063			64,410	
Oct	6,744			63,909	
Nov	7,618			64,145	
Dec	7,176			64,597	
Annual Total	85,878				
Total Place- ments ⁴					
Jan	8,018	8,772	109		
Feb	9,026	8,811	98		
Mar	8,415	9,025	107		
Apr	7,558	8,358	111		
May	8,930	9,780	110		
Jun ⁵	9,144	9,435	103		
Jul	7,845	8,463	108		
Aug	9,170				
Sep	8,742				
Oct	8,028				
Nov	9,550				
Dec	8,700				
Annual Total	103,126				

¹ Reported by leading breeders. Coverage may not be 100 percent. Includes expected pullet chicks from eggs sold during the preceding month at the rate of 125 pullet chicks per 30 dozen case of eggs.

² For Jul 2007, includes breeder pullet chicks hatched Apr 2006 through Dec 2006.

³ Revised 2007 pullet chicks hatched and cumulative placements for January 2008.

⁴ U.S. production of intended placements worldwide.

⁵ Revised 2007 only.

Reliability of Chicken and Eggs Estimates

Survey Procedures: Primary data for the "**Chickens and Eggs**" report are from weekly and/or monthly questionnaires sent to producers. An attempt is made to collect information for layer and egg estimates from each known contractor and independent producer who has at least 30,000 table egg layers, flocks of hatchery supply layers, or pullet only operations with at least 500 pullets. Coverage for operations with less than 30,000 table egg layers are estimated each month based on data reported in December. Approximately 650 contractors, independent egg producers, and pullet only operations are contacted each month. All known hatcheries, approximately 300, are contacted for information on a weekly and/or monthly basis.

Estimating Procedures: Sound statistical methodology is employed to derive estimates from the reported data. All data are checked for unusual values. Data from each operation are compared to their own past operating profile and to trends from similar operations. Data for missing operations are estimated based on similar operations or historical data. NASS field offices prepare these estimates by using a combination of survey indications and historic trends. Individual State estimates are reviewed by the Agricultural Statistics Board for reasonableness. Individual hatchery data are summed to State, regional, and U.S. totals.

For chicken hatcheries, chicks hatched consist of all chicks of domesticated breeds including males and chicks destined for hatchery supply flocks and research purposes. Eggs set are eggs in incubators for the purpose of hatching. The relationship of egg-type chicks hatched to chicken inventory and poultry marketings are carefully monitored. The disposition of egg-type chicks hatched prior to placement into the laying flock can vary significantly, which can make comparisons to changes in layer inventory inconsistent over time. Broiler chicks placed are specifically placed on feed for meat production. Intended placement data reported by leading breeders include pullet chicks expected from eggs sold the preceding month. The breeders in this report account for a large percentage of replacement pullets for hatchery supply flocks. Production of replacement pullets by these breeders indicates the number of pullets available to hatchery supply flocks several months before the pullets will actually move into the flocks. "Hatchery Supply Flocks" include all generations of layers which could lay eggs to supply a hatchery. This includes the generations of parents, grandparents, great-grandparents, pedigree, etc. Also included are research flocks, vaccine flocks, and specific pathogen-free flocks. The broiler cumulative potential placements are a moving total of the intended placements 7-15 months earlier. The egg-type cumulative potential placements of 7-18 months represent the first laying cycle. Molting and additional laying cycles will increase the cumulative potential placements of egg-type hatching flocks.

Revision Policy: The previous month's estimates are subject to revision if late reports or corrected data indicates a different level. Additionally, revisions after the monthly report will be made at the end of the marketing year and published in the annual reports of "**Chickens and Eggs Summary**" and "**Hatchery Production**".

Reliability: Estimates are based on a census of all known contractors and independent producers who have at least 30,000 table egg layers, flocks of hatchery supply layers, pullet only operations with at least 500 pullets, or operating hatcheries and therefore, have no sampling error. However, estimates are subject to errors such as omission, duplication, and mistakes in reporting, recording, and processing the data. While these errors cannot be measured directly, they are minimized through strict quality controls in the data collection process and a careful review of all reported data for consistency and reasonableness.

Information Contacts

Listed below are the commodity specialists in the Livestock Branch of the National Agricultural Statistics Service to contact for additional information.

Dan Kerestes, Chief, Livestock Branch	(202) 720-3570
Darin Jantzi, Head, Poultry and Specialty Commodities Section	(202) 720-3570
David Colwell - Cold Storage	(202) 720-8784
Fleming Gibson - Egg Products, Poultry Slaughter, Catfish Processing, Mink	(202) 690-3237
Darin Jantzi - Layers, Eggs	(202) 720-3570
Sharyn Lavender - Broiler Hatchery, Chicken Hatchery, Honey	(202) 720-3244
Toby Paterson - Catfish Production, Trout Production, Census of Aquaculture, Turkey Hatchery, Turkeys Raised	(202) 720-0585

ACCESS TO REPORTS!!

For your convenience, there are several ways to obtain NASS reports, data products, and services:

INTERNET ACCESS

All NASS reports are available free of charge on the worldwide Internet. For access, connect to the Internet and go to the NASS Home Page at: www.nass.usda.gov.

E-MAIL SUBSCRIPTION

All NASS reports are available by subscription free of charge direct to your e-mail address. Starting with the NASS Home Page at www.nass.usda.gov, under the right navigation, *Receive reports by Email*, click on **National** or **State**. Follow the instructions on the screen.

PRINTED REPORTS OR DATA PRODUCTS

CALL OUR TOLL-FREE ORDER DESK: 800-999-6779 (U.S. and Canada)
Other areas, please call 703-605-6220 FAX: 703-605-6900
(Visa, MasterCard, check, or money order acceptable for payment.)

ASSISTANCE

For **assistance** with general agricultural statistics or further information about NASS or its products or services, contact the **Agricultural Statistics Hotline** at **800-727-9540**, 7:30 a.m. to 4:00 p.m. ET, or e-mail: nass@nass.usda.gov.

The U.S. Department of Agriculture (USDA) prohibits discrimination in all its programs and activities on the basis of race, color, national origin, age, disability, and where applicable, sex, marital status, familial status, parental status, religion, sexual orientation, genetic information, political beliefs, reprisal, or because all or a part of an individual's income is derived from any public assistance program. (Not all prohibited bases apply to all programs.) Persons with disabilities who require alternative means for communication of program information (Braille, large print, audiotape, etc.) should contact USDA's TARGET Center at (202) 720-2600 (voice and TDD).

To file a complaint of discrimination, write to USDA, Director, Office of Civil Rights, 1400 Independence Avenue, S.W., Washington, D.C. 20250-9410, or call (800) 795-3272 (voice) or (202) 720-6382 (TDD). USDA is an equal opportunity provider and employer.