

# Chickens and Eggs

---

Released July 21, 2009, by the National Agricultural Statistics Service (NASS), Agricultural Statistics Board, U.S. Department of Agriculture. For information on "Layers and Eggs" call Kim Linonis at (202) 690-8632, for "Chicks Hatched" call Sharyn Lavender at (202) 720-3244, office hours 7:30 a.m. to 4:00 p.m. ET.

## **June Egg Production Down Slightly**

U.S. egg production totaled 7.34 billion during June 2009, down slightly from last year. Production included 6.29 billion table eggs, and 1.06 billion hatching eggs, of which 988 million were broiler-type and 70 million were egg-type. The total number of layers during June 2009 averaged 333 million, down 2 percent from last year. June egg production per 100 layers was 2,204 eggs, up 1 percent from June 2008.

All layers in the U.S. on July 1, 2009 totaled 332 million, down 2 percent from last year. The 332 million layers consisted of 275 million layers producing table or market type eggs, 53.9 million layers producing broiler-type hatching eggs, and 2.89 million layers producing egg-type hatching eggs. Rate of lay per day on July 1, 2009, averaged 73.7 eggs per 100 layers, up 1 percent from July 1, 2008.

## **Egg-Type Chicks Hatched Up 6 Percent**

Egg-type chicks hatched during June 2009 totaled 43.5 million, up 6 percent from June 2008. Eggs in incubators totaled 32.4 million on July 1, 2009, down 3 percent from a year ago.

Domestic placements of egg-type pullet chicks for future hatchery supply flocks by leading breeders totaled 321 thousand during June 2009, up 39 percent from June 2008.

## **Broiler-Type Chicks Hatched Down 4 Percent**

Broiler-type chicks hatched during June 2009 totaled 771 million, down 4 percent from June 2008. Eggs in incubators totaled 631 million on July 1, 2009, down 4 percent from a year earlier.

Leading breeders placed 7.04 million broiler-type pullet chicks for future domestic hatchery supply flocks during June 2009, down 2 percent from June 2008.



## Contents

	<b>Page</b>
U.S. Average Number of Layers on Hand and Egg Production.....	1
U.S. Layers on Hand and Eggs Produced by Type, Forced Molt, and Pullets.....	3
Layers on Hand and Eggs Produced by State.....	5
Egg Production by Type and State .....	7
Forced Molt .....	9
U.S. Hatchery Production Summary .....	10
Egg-Type Hatchery .....	11
Egg-Type Intended Placements .....	12
Broiler-Type Hatchery .....	12
Broiler-Type Intended Placements.....	14
Reliability of Chickens and Eggs Estimates.....	15
Regional Listing .....	16
Terms and Definitions of Chickens and Eggs Estimates.....	16
Information Contacts.....	16

**All Layers: Average Number on Hand During the Month,  
United States, 2008-09**

Month	2008	2009
	<i>1,000 Layers</i>	<i>1,000 Layers</i>
Dec <sup>1</sup>	346,225	340,302
Jan	344,737	340,936
Feb	343,299	340,614
Mar	342,017	340,455
Apr	340,838	339,745
May <sup>2</sup>	340,116	336,695
Jun	338,664	333,197
Jul	336,276	
Aug	335,265	
Sep	334,489	
Oct	334,937	
Nov	337,995	

<sup>1</sup> December preceding year.

<sup>2</sup> Revised 2009 only.

**Eggs: Production During the Month by Type,  
United States, 2008-09**

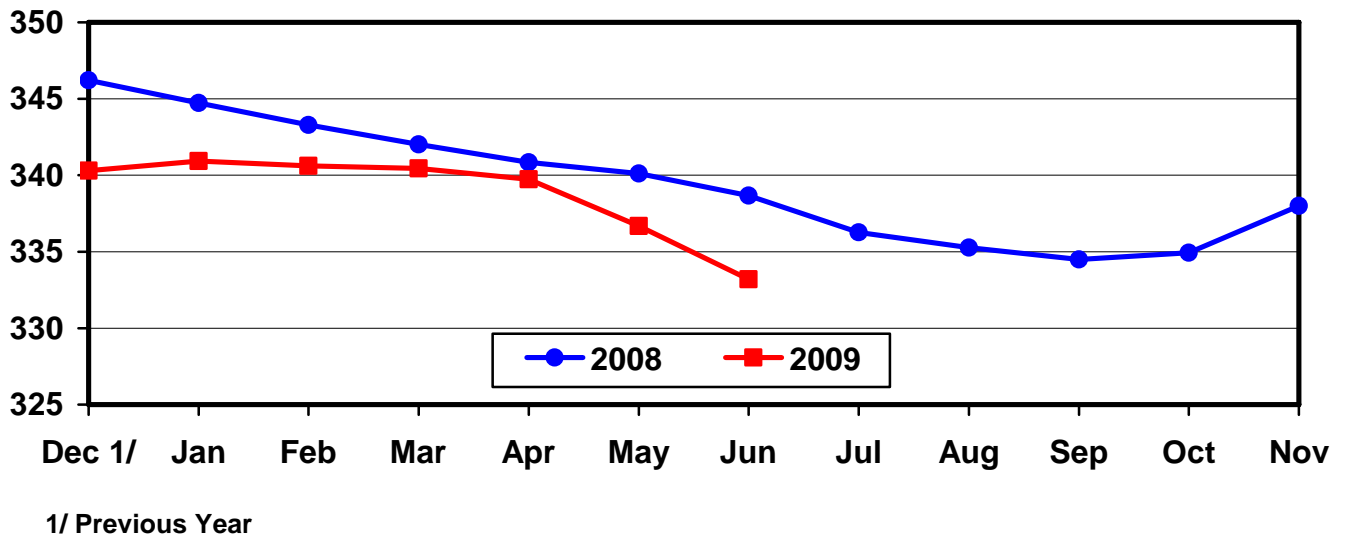
Month	Total Eggs <sup>1</sup>		Table Eggs		Hatching Eggs	
	2008	2009	2008	2009	2008	2009
	<i>Million Eggs</i>	<i>Million Eggs</i>	<i>Million Eggs</i>	<i>Million Eggs</i>	<i>Million Eggs</i>	<i>Million Eggs</i>
Dec <sup>2</sup>	7,808	7,768	6,666	6,701	1,143	1,068
Jan	7,646	7,666	6,498	6,591	1,149	1,075
Feb	7,114	6,892	6,034	5,906	1,080	985
Mar	7,675	7,724	6,517	6,632	1,159	1,093
Apr	7,373	7,461	6,256	6,408	1,117	1,053
May	7,564	7,597	6,409	6,505	1,155	1,092
Jun	7,367	7,343	6,262	6,285	1,104	1,058
Jul	7,599		6,474		1,125	
Aug	7,551		6,436		1,115	
Sep	7,339		6,272		1,067	
Oct	7,625		6,538		1,088	
Nov	7,490		6,446		1,044	
During Year <sup>1</sup>	90,151		76,811		13,346	

<sup>1</sup> Totals may not add due to rounding.

<sup>2</sup> December preceding year.

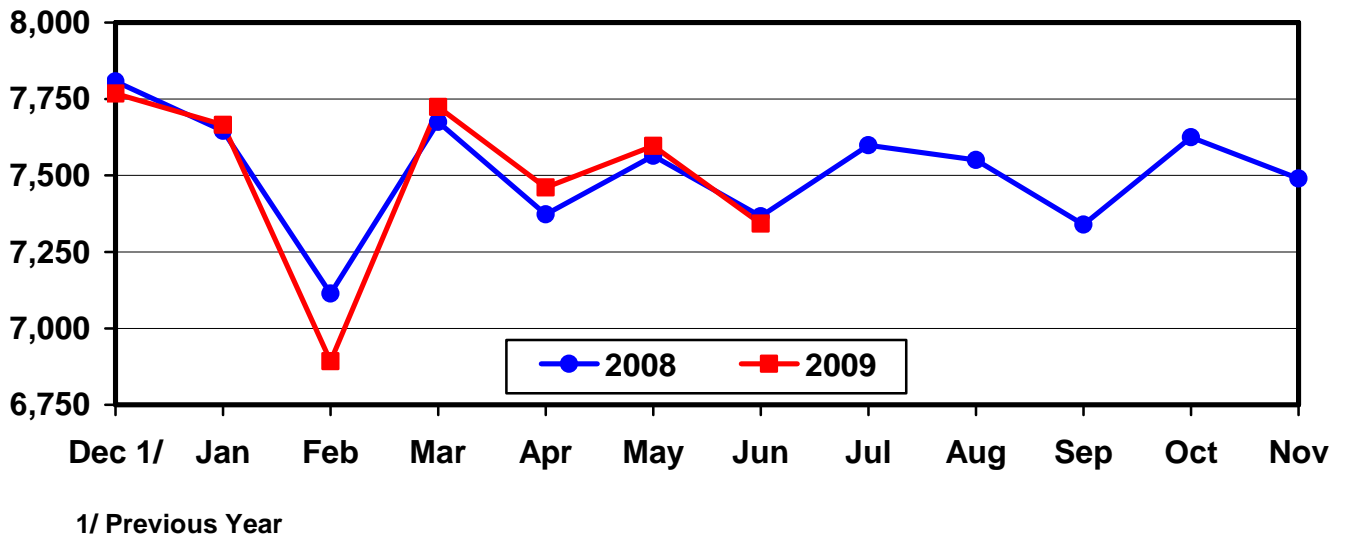
## U.S. Average Number of Layers During the Month

Million Layers



## U.S. All Egg Production During the Month

Million Eggs



**Layers and Eggs: Layers on Hand and Eggs Produced by Type,  
and Forced Molt, United States, May-June 2008-09**

Item	Unit	2008	2009 <sup>1</sup>	2009 as % of 2008
Layers During May <sup>2</sup>	1,000			
All Layers		340,116	336,695	99
Table Egg Type		279,322	279,569	100
Hatching Egg Type		60,794	57,126	94
Broiler-Type Hatching		57,924	54,166	94
Egg-Type Hatching		2,870	2,960	103
Eggs per 100 Layers During May	Number			
All Layers		2,224	2,256	101
Table Egg Type		2,294	2,327	101
Hatching Egg Type		1,900	1,912	101
Broiler-Type Hatching		1,875	1,881	100
Egg-Type Hatching		2,404	2,466	103
Eggs Produced During May <sup>2</sup>	Million			
All Layers		7,564	7,597	100
Table Egg Type		6,409	6,505	101
Hatching Egg Type		1,155	1,092	95
Broiler-Type Hatching		1,086	1,019	94
Egg-Type Hatching		69	73	106
Layers on Jun 1 <sup>2</sup>	1,000			
All Layers		339,867	334,499	98
Table Egg Type		279,430	277,410	99
Hatching Egg Type		60,437	57,089	94
Broiler-Type Hatching		57,595	54,181	94
Egg-Type Hatching		2,842	2,908	102
Eggs per 100 Layers on Jun 1	Number			
All Layers		71.7	73.1	102
Table Egg Type		73.9	75.4	102
Hatching Egg Type		61.3	61.7	101
Broiler-Type Hatching		60.5	60.8	100
Egg-Type Hatching		77.7	79.2	102
Forced Molt Layers on Jun 1	Percent			
Percent Being Molted		3.7	3.4	92
Percent with Molt Completed		20.9	21.3	102
Layers Sold for Slaughter During May	1,000	14,064	14,979	107
Layers Rendered, Died, Destroyed, Composted or Disappeared For Any Reason During May	1,000	8,599	8,857	103
Pullets on Jun 1	1,000	101,971	101,141	99
Pullets Added During May <sup>3</sup>	1,000	21,004	21,712	103

<sup>1</sup> Revised.

<sup>2</sup> Totals may not add due to rounding.

<sup>3</sup> Pullet chicks less than 3 days old added to pullet flocks.

**Layers and Eggs: Layers on Hand and Eggs Produced by Type,  
and Forced Molt, United States, June-July 2008-09**

Item	Unit	2008	2009	2009 as % of 2008
Layers During Jun <sup>1</sup>	1,000			
All Layers		338,664	333,197	98
Table Egg Type		278,830	276,243	99
Hatching Egg Type		59,834	56,954	95
Broiler-Type Hatching		57,048	54,049	95
Egg-Type Hatching		2,786	2,905	104
Eggs per 100 Layers During Jun	Number			
All Layers		2,175	2,204	101
Table Egg Type		2,246	2,275	101
Hatching Egg Type		1,845	1,858	101
Broiler-Type Hatching		1,821	1,828	100
Egg-Type Hatching		2,333	2,410	103
Eggs Produced During Jun <sup>1</sup>	Million			
All Layers		7,367	7,343	100
Table Egg Type		6,262	6,285	100
Hatching Egg Type		1,104	1,058	96
Broiler-Type Hatching		1,039	988	95
Egg-Type Hatching		65	70	108
Layers on Jul 1 <sup>1</sup>	1,000			
All Layers		337,416	331,843	98
Table Egg Type		278,206	275,053	99
Hatching Egg Type		59,210	56,790	96
Broiler-Type Hatching		56,486	53,901	95
Egg-Type Hatching		2,724	2,889	106
Eggs per 100 Layers on Jul 1	Number			
All Layers		73.3	73.7	101
Table Egg Type		75.8	76.2	101
Hatching Egg Type		61.5	61.6	100
Broiler-Type Hatching		60.7	60.6	100
Egg-Type Hatching		77.6	79.4	102
Forced Molt Layers on Jul 1	Percent			
Percent Being Molted		3.4	3.4	100
Percent with Molt Completed		20.8	20.2	97
Layers Sold for Slaughter During Jun	1,000	12,585	14,228	113
Layers Rendered, Died, Destroyed, Composted or Disappeared For Any Reason During Jun	1,000	9,079	7,929	87
Pullets on Jul 1	1,000	102,538	100,911	98
Pullets Added During Jun <sup>2</sup>	1,000	20,996	20,827	99

<sup>1</sup> Totals may not add due to rounding.

<sup>2</sup> Pullet chicks less than 3 days old added to pullet flocks.

**Layers and Eggs: Layers on Hand and Eggs Produced by State  
and United States, During May 2008-09**

State	Table Egg Layers in Flocks 30,000 and Above		All Layers		Eggs per 100 for All Layers	
	2008	2009 <sup>1</sup>	2008	2009 <sup>1</sup>	2008	2009
	<i>1,000</i>	<i>1,000</i>	<i>1,000</i>	<i>1,000</i>	<i>Number</i>	<i>Number</i>
AL	1,273	1,381	9,522	9,348	1,922	1,936
AR	3,637	3,324	13,732	12,250	1,959	2,016
CA	20,422	19,448	20,716	19,754	2,148	2,253
CO	3,193	3,243	3,706	3,721	2,402	2,580
CT	2,796	2,764	2,859	2,826	2,308	2,371
FL	9,938	9,234	10,389	9,605	2,214	2,311
GA	8,931	8,888	18,443	17,486	2,050	2,110
HI	313	306	336	333	1,815	1,832
IL	5,154	4,961	5,381	5,144	2,211	2,391
IN	23,552	22,841	24,251	23,583	2,284	2,336
IA	52,718	52,863	53,643	53,755	2,291	2,271
ME	3,871	3,326	3,947	3,419	2,280	2,164
MD	2,358	1,988	2,496	2,131	2,163	2,065
MI	8,958	9,620	9,117	9,787	2,369	2,319
MN	9,691	9,599	10,192	10,096	2,325	2,288
MS	1,462	1,428	6,257	6,178	1,998	2,023
MO	5,680	5,907	7,008	7,208	2,297	2,372
NE	9,533	9,521	9,583	9,571	2,463	2,466
NY	3,790	3,836	4,005	4,050	2,497	2,519
NC	4,965	5,492	12,547	12,773	2,088	2,153
OH	25,483	26,441	25,942	26,898	2,251	2,279
OR	2,427	2,357	2,581	2,506	2,363	2,474
PA	20,111	21,269	21,225	22,377	2,422	2,422
SC	3,290	3,163	4,598	4,537	2,131	2,006
SD	2,450	2,341	2,510	2,381	2,351	2,310
TX	13,485	13,086	18,213	17,632	2,202	2,235
VA	1,287	1,065	3,198	2,865	2,001	2,059
WA	5,496	6,171	5,564	6,286	2,390	2,354
WI	4,093	4,321	4,520	4,905	2,124	2,283
Oth Sts <sup>2</sup>	14,773	14,914	23,635	23,290	2,137	2,181
US	275,130	275,098	340,116	336,695	2,224	2,256

<sup>1</sup> Revised.

<sup>2</sup> Not published separately to avoid disclosing data for individual operations.



**Layers and Eggs: Layers on Hand and Eggs Produced by State  
and United States, During June 2008-09**

State	Table Egg Layers in Flocks 30,000 and Above		All Layers		Eggs per 100 for All Layers	
	2008	2009	2008	2009	2008	2009
	<i>1,000</i>	<i>1,000</i>	<i>1,000</i>	<i>1,000</i>	<i>Number</i>	<i>Number</i>
AL	1,220	1,294	9,314	9,192	1,879	1,871
AR	3,600	3,292	13,565	12,176	1,917	1,955
CA	20,342	19,114	20,636	19,424	2,132	2,234
CO	3,172	3,113	3,716	3,601	2,234	2,472
CT	2,722	2,749	2,786	2,812	2,261	2,276
FL	9,824	9,003	10,232	9,362	2,160	2,211
GA	9,046	8,782	18,402	17,423	1,994	2,038
HI	313	300	335	325	1,791	1,754
IL	5,085	4,917	5,312	5,122	2,203	2,284
IN	23,540	22,305	24,230	23,006	2,245	2,308
IA	52,518	52,679	53,432	53,542	2,253	2,215
ME	3,832	3,319	3,908	3,411	2,201	2,082
MD	2,223	1,967	2,366	2,114	2,113	2,129
MI	9,096	9,792	9,257	9,952	2,301	2,291
MN	9,516	9,506	10,006	10,024	2,259	2,205
MS	1,522	1,392	6,348	6,186	1,969	2,021
MO	5,568	6,109	6,899	7,419	2,247	2,251
NE	9,329	9,424	9,379	9,474	2,356	2,396
NY	3,753	3,821	3,960	4,038	2,374	2,402
NC	4,878	5,394	12,425	12,609	1,988	2,086
OH	25,968	25,935	26,429	26,404	2,198	2,257
OR	2,498	2,181	2,637	2,333	2,351	2,486
PA	20,424	21,250	21,529	22,319	2,360	2,375
SC	3,287	3,060	4,583	4,422	2,051	2,035
SD	2,437	2,352	2,497	2,392	2,243	2,299
TX	13,445	12,716	18,041	17,207	2,178	2,174
VA	1,284	1,170	3,100	2,997	2,000	1,969
WA	5,419	5,868	5,484	5,983	2,279	2,357
WI	4,133	4,221	4,541	4,792	2,180	2,254
Oth Sts <sup>1</sup>	14,645	14,749	23,315	23,136	2,102	2,114
US	274,639	271,774	338,664	333,197	2,175	2,204

<sup>1</sup> Not published separately to avoid disclosing data for individual operations.

**Egg Production: By Type, State, and United States,  
May 2008-09**

State	Total Production <sup>1</sup>		Table Eggs <sup>2</sup>		Hatching Eggs <sup>2</sup>	
	2008	2009 <sup>3</sup>	2008	2009	2008	2009 <sup>3</sup>
	<i>Million Eggs</i>	<i>Million Eggs</i>	<i>Million Eggs</i>	<i>Million Eggs</i>	<i>Million Eggs</i>	<i>Million Eggs</i>
AL	183	181	30	31	153	150
AR	269	247	83	81	186	166
CA	445	445				
CO	89	96				
CT	66	67				
FL	230	222	222	216	8	6
GA	378	369	197	204	181	165
HI	6.1	6.1	6.1	6.1	0	0
IL	119	123	115	120	4	3
IN	554	551	542	537	12	14
IA	1,229	1,221	1,213	1,206	16	15
ME	90	74				
MD	54	44	52	42	2	2
MI	216	227				
MN	237	231	228	223	9	8
MS	125	125	34	34	91	91
MO	161	171				
NE	236	236	236	236	0	0
NY	100	102				
NC	262	275	121	142	141	133
OH	584	613				
OR	61	62	59		2	
PA	514	542	494	522	20	20
SC	98	91	76	68	22	23
SD	59	55	59	55	0	0
TX	401	394				
VA	64	59	29	26	35	33
WA	133	148				
WI	96	112				
Oth Sts <sup>3</sup>	505	508	359	370	146	138
US <sup>1</sup>	7,564	7,597	6,409	6,505	1,155	1,092

<sup>1</sup> Totals may not add due to rounding.

<sup>2</sup> Data by type of flock not shown for some States to avoid disclosing individual operations, data included in US totals.

<sup>3</sup> Not published separately to avoid disclosing data for individual operations.

**Egg Production: By Type, State, and United States,  
June 2008-09**

State	Total Production <sup>1</sup>		Table Eggs <sup>2</sup>		Hatching Eggs <sup>2</sup>	
	2008	2009	2008	2009	2008	2009
	<i>Million Eggs</i>	<i>Million Eggs</i>	<i>Million Eggs</i>	<i>Million Eggs</i>	<i>Million Eggs</i>	<i>Million Eggs</i>
AL	175	172	29	29	146	143
AR	260	238	82	77	178	161
CA	440	434				
CO	83	89				
CT	63	64				
FL	221	207	214	202	7	5
GA	367	355	192	193	175	162
HI	6.0	5.7	6.0	5.7	0	0
IL	117	117	114	114	3	3
IN	544	531	532	518	12	13
IA	1,204	1,186	1,190	1,173	14	13
ME	86	71				
MD	50	45	48	43	2	2
MI	213	228				
MN	226	221	217	212	9	9
MS	125	125	36	35	89	90
MO	155	167				
NE	221	227	221	227	0	0
NY	94	97				
NC	247	263	114	135	133	128
OH	581	596				
OR	62	58	60	56	2	2
PA	508	530	489	511	19	19
SC	94	90	72	68	22	22
SD	56	55	56	55	0	0
TX	393	374				
VA	62	59	30	27	32	32
WA	125	141				
WI	99	108				
Oth Sts <sup>3</sup>	490	489	350	355	139	134
US <sup>1</sup>	7,367	7,343	6,262	6,285	1,104	1,058

<sup>1</sup> Totals may not add due to rounding.

<sup>2</sup> Data by type of flock not shown for some States to avoid disclosing individual operations, data included in US totals.

<sup>3</sup> Not published separately to avoid disclosing data for individual operations.

**Forced Molt: Percent of All Layers by Month,  
United States, 2008-09**

Month	Percent Being Molted <sup>1</sup>		Percent with Molt Completed <sup>1</sup>	
	2008	2009	2008	2009
	<i>Percent</i>	<i>Percent</i>	<i>Percent</i>	<i>Percent</i>
Jan	3.0	3.2	22.7	21.2
Feb	3.9	3.4	21.7	21.4
Mar	2.4	3.4	22.1	21.4
Apr	2.8	1.9	21.3	21.7
May	4.1	4.5	20.8	20.5
Jun	3.7	3.4	20.9	21.3
Jul	3.4	3.4	20.8	20.2
Aug	3.9		21.2	
Sep	3.9		20.8	
Oct	3.7		21.9	
Nov	2.1		22.7	
Dec	1.9		22.1	

<sup>1</sup> As of first of month.

**Forced Molt: Percent of All Layers by State  
and United States, July 1, 2008-09**

State	Percent Being Molted <sup>1</sup>		Percent with Molt Completed <sup>1</sup>	
	2008	2009	2008	2009
	<i>Percent</i>	<i>Percent</i>	<i>Percent</i>	<i>Percent</i>
AL	0.5	1.5	4.5	4.5
AR	2.0	2.0	10.0	10.5
CA	8.0	6.5	31.5	29.0
CO	1.5	1.5	20.0	16.5
CT	0.0	0.0	10.5	12.5
FL	4.5	8.5	28.0	27.5
GA	3.5	4.5	10.0	11.5
HI	12.0	9.5	55.0	53.0
IL	3.5	2.5	27.0	34.0
IN	1.5	2.0	35.0	34.5
IA	4.0	3.0	33.5	32.0
ME	0.0	0.0	0.0	0.0
MD	4.0	7.0	12.0	22.5
MI	4.5	1.5	18.5	18.0
MN	4.0	3.5	27.5	24.5
MS	1.5	1.0	10.5	10.5
MO	1.0	0.5	17.5	12.5
NE	3.0	1.0	2.0	1.5
NY	1.0	3.0	5.0	6.0
NC	2.0	0.0	6.5	8.0
OH	4.0	8.0	16.0	18.0
OR	0.0	8.0	25.0	21.0
PA	2.0	3.0	12.0	11.5
SC	2.0	2.5	21.0	19.0
SD	16.0	6.5	16.0	21.5
TX	2.5	3.0	20.0	13.5
VA	2.5	0.0	18.5	8.0
WA	5.5	9.5	30.5	32.0
WI	3.0	2.0	30.0	28.0
Oth Sts <sup>2</sup>	4.2	2.7	18.9	21.3
US	3.4	3.4	20.8	20.2

<sup>1</sup> As of first of month.

<sup>2</sup> Not published separately to avoid disclosing data for individual operations.

**Hatchery Production: Eggs in Incubators, Chicks Hatched,  
and Placements by Type, United States, June-July 2008-09**

Item	2008	2009	2009 as % of 2008
	<i>1,000</i>	<i>1,000</i>	<i>Percent</i>
<b>Egg-Type</b>			
Eggs in Incubators on Jul 1	33,455	32,353	97
Chicks Hatched During Jun	40,928	43,453	106
Chicks Hatched Jan thru Jun	245,827	236,929	96
Pullets Hatched During Jun for Intended Placements in Hatchery Supply Flocks	231	321	139
7-18 Months Earlier <sup>1</sup>	2,942	3,004	102
<b>Broiler-Type</b>			
Eggs in Incubators on Jul 1	655,708	631,336	96
Chicks Hatched During Jun	805,793	770,970	96
Chicks Hatched Jan thru Jun	4,870,861	4,575,965	94
Pullets Hatched During Jun for Intended Placements in Hatchery Supply Flocks	7,154	7,038	98
7-15 Months Earlier <sup>2</sup>	66,057	64,693	98

<sup>1</sup> 2009 includes pullet chicks hatched Dec 2007 through Nov 2008.

<sup>2</sup> 2009 includes pullet chicks hatched Mar 2008 through Nov 2008.

**Egg-Type Eggs in Incubators: By Region and United States,  
July 1, 2008-09**

Region	2008	2009	2009 as % of 2008
	<i>1,000</i>	<i>1,000</i>	<i>Percent</i>
North Atlantic	5,488	4,702	86
E North Central	6,716	6,984	104
W North Central	8,874	7,377	83
South Atlantic	2,972	3,884	131
South Central	4,412	3,833	87
West	4,993	5,573	112
US	33,455	32,353	97

**Egg-Type Chicks Hatched: By Month, United States, 2008-09**

Month	By Months			Cumulative		
	2008	2009	2009 as % of 2008	2008	2009	2009 as % of 2008
	<i>1,000</i>	<i>1,000</i>	<i>Percent</i>	<i>1,000</i>	<i>1,000</i>	<i>Percent</i>
Jan	40,256	38,083	95	40,256	38,083	95
Feb	38,534	36,861	96	78,790	74,944	95
Mar	41,954	40,137	96	120,744	115,081	95
Apr	42,329	40,621	96	163,073	155,702	95
May	41,826	37,774	90	204,899	193,476	94
Jun	40,928	43,453	106	245,827	236,929	96
Jul	37,250			283,077		
Aug	35,578			318,655		
Sep	37,111			355,766		
Oct	40,198			395,964		
Nov	34,187			430,151		
Dec	37,091			467,242		

**Intended Placements: Egg-Type Pullet Chicks for Hatchery Supply  
Flocks by Month and Total, United States, 2008-09**

Month	Pullet Chicks Hatched		2009 as % of 2008	Cumulative Potential Plcmts Relative to Current Supply Flocks 7-18 Months Earlier <sup>1</sup>	
	2008	2009		2009	2010
	<i>1,000</i>	<i>1,000</i>	<i>Percent</i>	<i>1,000</i>	<i>1,000</i>
Jan	198	240	121	2,907	3,198
Feb	271	256	94	2,968	
Mar	245	277	113	2,969	
Apr	264	307	116	2,879	
May	227	275	121	2,968	
Jun	231	321	139	3,004	
Jul	244			2,958	
Aug	279			3,000	
Sep	210			2,985	
Oct	273			3,017	
Nov	317			3,060	
Dec	199			3,108	
Total	2,958				

<sup>1</sup> For June 2009, includes breeder pullet chicks hatched Dec 2007 through Nov 2008. The 7-18 months represent the first laying cycle. Molting and additional laying cycles will increase the cumulative potential placements.

**Broiler-Type Eggs in Incubators: By Region  
and United States, July 1, 2008-09**

Region	2008	2009	2009 as % of 2008
	<i>1,000</i>	<i>1,000</i>	<i>Percent</i>
North Atlantic	13,550	11,414	84
E North Central	12,842	12,477	97
W North Central	28,014	29,030	104
South Atlantic	240,356	231,930	96
South Central	335,958	322,163	96
West	24,988	24,322	97
US	655,708	631,336	96

**Broiler-Type Chicks Hatched: By State  
and United States, June 2008-09**

State	During June			Jan-Jun		
	2008	2009	2009 as % of 2008	2008	2009	2009 as % of 2008
	<i>1,000</i>	<i>1,000</i>	<i>Percent</i>	<i>1,000</i>	<i>1,000</i>	<i>Percent</i>
AL	116,961	108,987	93	704,681	645,607	92
AR	98,033	87,081	89	601,927	525,812	87
DE	13,458	13,234	98	84,938	76,178	90
FL	4,832	3,646	75	29,831	21,689	73
GA	122,474	114,913	94	743,004	693,454	93
KY	29,011	29,114	100	168,313	165,864	99
LA	13,425	11,230	84	82,862	64,190	77
MD	31,527	32,100	102	194,289	191,523	99
MS	69,187	68,279	99	415,335	392,787	95
NC	69,216	66,179	96	424,934	406,671	96
OK	25,728	24,947	97	152,232	147,384	97
PA	15,560	12,977	83	91,105	82,463	91
SC	19,739	19,988	101	117,916	118,782	101
TX	56,566	57,562	102	338,543	337,732	100
VA	22,753	22,934	101	135,546	131,759	97
CA, MO, TN, & WV	72,306	72,832	101	433,033	425,592	98
19 Sts <sup>1</sup>	780,776	746,003	96	4,718,489	4,427,487	94
Oth Sts <sup>2</sup>	25,017	24,967	100	152,372	148,478	97
US	805,793	770,970	96	4,870,861	4,575,965	94

<sup>1</sup> States in the weekly hatchery production estimating program.

<sup>2</sup> Not published separately to avoid disclosing data for individual operations.

**Broiler-Type Chicks Hatched: By Month, United States, 2008-09**

Month	By Months			Cumulative		
	2008	2009	2009 as % of 2008	2008	2009	2009 as % of 2008
	<i>1,000</i>	<i>1,000</i>	<i>Percent</i>	<i>1,000</i>	<i>1,000</i>	<i>Percent</i>
Jan	826,027	778,401	94	826,027	778,401	94
Feb	775,280	700,913	90	1,601,307	1,479,314	92
Mar	836,890	783,348	94	2,438,197	2,262,662	93
Apr	801,548	755,862	94	3,239,745	3,018,524	93
May	825,323	786,471	95	4,065,068	3,804,995	94
Jun	805,793	770,970	96	4,870,861	4,575,965	94
Jul	805,182			5,676,043		
Aug	799,059			6,475,102		
Sep	755,235			7,230,337		
Oct	740,964			7,971,301		
Nov	705,312			8,676,613		
Dec	779,304			9,455,917		



**Intended Placements: Broiler-Type Pullet Chicks for Hatchery  
Supply Flocks by Month and Total, 2008-09**

Month	Pullet Chicks Hatched		2009 as % of 2008	Cumulative Potential Plcmts Relative to Current Supply Flocks 7-15 Months Earlier <sup>1</sup>	
	2008	2009		2009	2010
	<i>1,000</i>	<i>1,000</i>	<i>Percent</i>	<i>1,000</i>	<i>1,000</i>
US Place- ments					
Jan	7,012	7,142	102	65,952	62,526
Feb	7,536	7,215	96	65,444	
Mar	7,090	6,773	96	65,535	
Apr	7,119	6,158	87	65,173	
May <sup>2</sup>	8,217	7,552	92	65,203	
Jun	7,154	7,038	98	64,693	
Jul	6,462			64,183	
Aug	7,697			64,206	
Sep	6,886			63,204	
Oct	7,042			62,823	
Nov	7,026			62,519	
Dec	6,580			62,374	
Annual Total	85,821				
Total Place- ments <sup>3</sup>					
Jan	8,706	8,410	97		
Feb	9,498	8,524	90		
Mar	9,245	8,626	93		
Apr	8,720	7,664	88		
May <sup>4</sup>	10,089	9,255	92		
Jun	9,228	8,984	97		
Jul	8,017				
Aug	9,603				
Sep	8,651				
Oct	8,361				
Nov	8,704				
Dec	8,197				
Annual Total	107,019				

<sup>1</sup> For Jun 2009, includes breeder pullet chicks hatched Mar 2008 through Nov 2008.

<sup>2</sup> Revised 2009 pullet chicks hatched and cumulative placements for December 2009.

<sup>3</sup> U.S. production of intended placements worldwide.

<sup>4</sup> Revised 2009 only.

## Reliability of Chickens and Eggs Estimates

**Survey Procedures:** Primary data for the "**Chickens and Eggs**" report are from weekly and/or monthly questionnaires sent to producers. An attempt is made to collect information for layer and egg estimates from each known contractor and independent producer who has at least 30,000 table egg layers, flocks of hatchery supply layers, or pullet only operations with at least 500 pullets. Coverage for operations with less than 30,000 table egg layers are estimated each month based on data reported in December. Approximately 650 contractors, independent egg producers, and pullet only operations are contacted each month. All known hatcheries, approximately 300, are contacted for information on a weekly and/or monthly basis.

**Estimating Procedures:** Sound statistical methodology is employed to derive estimates from the reported data. All data are analyzed for unusual values. Data from each operation are compared to their own past operating profile and to trends from similar operations. Data for missing operations are estimated based on similar operations or historical data. NASS field offices prepare these estimates by using a combination of survey indications and historic trends. Individual State estimates are reviewed by the Agricultural Statistics Board for reasonableness. Individual hatchery data are summed to State, regional, and U.S. totals.

For chicken hatcheries, chicks hatched consist of all chicks of domesticated breeds including males and chicks destined for hatchery supply flocks and research purposes. Eggs set are eggs in incubators for the purpose of hatching. The relationship of egg-type chicks hatched to chicken inventory and poultry marketings are carefully monitored. The disposition of egg-type chicks hatched prior to placement into the laying flock can vary significantly, which can make comparisons to changes in layer inventory inconsistent over time. Broiler chicks placed are specifically placed on feed for meat production. Intended placement data reported by leading breeders include pullet chicks expected from eggs sold the preceding month. The breeders in this report account for a large percentage of replacement pullets for hatchery supply flocks. Production of replacement pullets by these breeders indicates the number of pullets available to hatchery supply layer flocks several months before the pullets will actually move into the laying flocks. "Hatchery Supply Flocks" include all generations of layers which could lay eggs to supply a hatchery. This includes the generations of parents, grandparents, great-grandparents, pedigree, etc. Also included are research flocks, vaccine flocks, and specific pathogen-free flocks. The broiler cumulative potential placements are a moving total of the intended placements 7-15 months earlier. The egg-type cumulative potential placements of 7-18 months earlier represent the first laying cycle. Molting and additional laying cycles will increase the cumulative potential placements of egg-type hatching flocks.

**Revision Policy:** The previous month's estimates are subject to revision if late reports or corrected data indicates a different level. Additionally, revisions after the monthly report will be made at the end of the marketing year and published in the annual reports of "**Chickens and Eggs Summary**" and "**Hatchery Production**".

**Reliability:** Estimates are based on a census of all known contractors and independent producers who have at least 30,000 table egg layers, flocks of hatchery supply layers, pullet only operations with at least 500 pullets, or operating hatcheries and therefore, have no sampling error. However, estimates are subject to errors such as omission, duplication, and mistakes in reporting, recording, and processing the data. While these errors cannot be measured directly, they are minimized through strict quality controls in the data collection process and a careful review of all reported data for consistency and reasonableness.

To assist in evaluating the reliability of the estimates in this report, the "Root Mean Square Error" is shown for selected items in the following table. The "Root Mean Square Error" is a statistical measure based on past performance and is computed using the differences between first and final estimates. The "Root Mean Square Error" for all layers over the past 24 months is 0.5 percent. This means that chances are 2 out of 3 that the final estimate will not be above or below the current estimate of 333 million layers by more than 0.5 percent. Chances are 9 out of 10 that the difference will not exceed 0.9 percent.

**Reliability of Layer and Egg Estimates**

Item	Root Mean Square Error	90 Percent Confidence Level		Difference Between First and Latest Estimates			Number of Months	
				Average	Smallest	Largest	First Above Latest	First Below Latest
All Layers	<i>Percent</i> 0.5	<i>Percent</i> 0.9	<i>1,000</i> 28	<i>1,000</i> 1,063	<i>1,000</i> 4	<i>1,000</i> 3,947	<i>Number</i> 10	<i>Number</i> 14
Eggs	0.5	0.8	<i>Million Eggs</i> 1	<i>Million Eggs</i> 24	<i>Million Eggs</i> 0	<i>Million Eggs</i> 75	9	12

**Regional Listing**

North Atlantic: CT, ME, MA, NH, NJ, NY, PA, RI, VT.

East North Central: IL, IN, MI, OH, WI.

West North Central: IA, KS, MN, MO, NE, ND, SD.

South Atlantic: DE, FL, GA, MD, NC, SC, VA, WV.

South Central: AL, AR, KY, LA, MS, OK, TN, TX.

West: AK, AZ, CA, CO, HI, ID, MT, NM, NV, OR, UT, WA, WY.

**Terms and Definitions of Chickens and Eggs Estimates**

**All Layers** includes both table egg and hatching egg flocks regardless of size.

**Intended Placements** are reported by leading breeders. Coverage may not be 100 percent. Includes expected pullet chicks from eggs sold during the preceding month at the rate of 125 pullet chicks per case of 30 dozen eggs.

**Information Contacts**

Listed below are the commodity specialists in the Livestock Branch of the National Agricultural Statistics Service to contact for additional information.

- Dan Kerestes, Chief, Livestock Branch .....(202) 720-3570
- Bruce Boess, Head, Poultry and Specialty Commodities Section.....(202) 720-4447
- David Colwell - Cold Storage .....(202) 720-8784
- Chris Hawthorn - Catfish Processing, Catfish Production, Trout Production,  
Census of Aquaculture, Egg Products, Mink .....(202) 720-0585
- Sharyn Lavender - Broiler Hatchery, Chicken Hatchery, Honey .....(202) 720-3244
- Kim Linonis - Layers, Eggs .....(202) 690-8632
- Troy Marshall - Poultry Slaughter, Turkey Hatchery, Turkeys Raised.....(202) 690-3237

## ACCESS TO REPORTS!!

---

For your convenience, there are several ways to obtain NASS reports, data products, and services:

### INTERNET ACCESS

All NASS reports are available free of charge. For free access, connect to the Internet and go to the NASS Home Page at: [www.nass.usda.gov](http://www.nass.usda.gov).

### E-MAIL SUBSCRIPTION

All NASS reports are available by subscription free of charge direct to your e-mail address. Starting with the NASS Home Page at [www.nass.usda.gov](http://www.nass.usda.gov), under the right navigation, *Receive reports by Email*, click on **National** or **State**. Follow the instructions on the screen.

-----

### PRINTED REPORTS OR DATA PRODUCTS

**CALL OUR TOLL-FREE ORDER DESK: 800-999-6779 (U.S. and Canada)**  
**Other areas, please call 703-605-6220      FAX: 703-605-6900**  
**(Visa, MasterCard, check, or money order acceptable for payment.)**

-----

### ASSISTANCE

For **assistance** with general agricultural statistics or further information about NASS or its products or services, contact the **Agricultural Statistics Hotline** at **800-727-9540**, 7:30 a.m. to 4:00 p.m. ET, or e-mail: [nass@nass.usda.gov](mailto:nass@nass.usda.gov).

The U.S. Department of Agriculture (USDA) prohibits discrimination in all its programs and activities on the basis of race, color, national origin, age, disability, and where applicable, sex, marital status, familial status, parental status, religion, sexual orientation, genetic information, political beliefs, reprisal, or because all or a part of an individual's income is derived from any public assistance program. (Not all prohibited bases apply to all programs.) Persons with disabilities who require alternative means for communication of program information (Braille, large print, audiotape, etc.) should contact USDA's TARGET Center at (202) 720-2600 (voice and TDD).

To file a complaint of discrimination, write to USDA, Director, Office of Civil Rights, 1400 Independence Avenue, S.W., Washington, D.C. 20250-9410, or call (800) 795-3272 (voice) or (202) 720-6382 (TDD). USDA is an equal opportunity provider and employer.