



# Chickens and Eggs

---

Released August 21, 2009, by the National Agricultural Statistics Service (NASS), Agricultural Statistics Board, U.S. Department of Agriculture. For information on "Layers and Eggs" call Kim Linonis at (202) 690-8632, for "Chicks Hatched" call Sharyn Lavender at (202) 720-3244, office hours 7:30 a.m. to 4:00 p.m. ET.

## July Egg Production Down Slightly

U.S. egg production totaled 7.59 billion during July 2009, down slightly from last year. Production included 6.51 billion table eggs, and 1.08 billion hatching eggs, of which 1.01 billion were broiler-type and 71 million were egg-type. The total number of layers during July 2009 averaged 333 million, down 1 percent from last year. July egg production per 100 layers was 2,281 eggs, up 1 percent from July 2008.

All layers in the U.S. on August 1, 2009 totaled 333 million, down 1 percent from last year. The 333 million layers consisted of 277 million layers producing table or market type eggs, 52.9 million layers producing broiler-type hatching eggs, and 2.88 million layers producing egg-type hatching eggs. Rate of lay per day on August 1, 2009, averaged 73.4 eggs per 100 layers, up 1 percent from August 1, 2008.

## Egg-Type Chicks Hatched Down 3 Percent

Egg-type chicks hatched during July 2009 totaled 36.3 million, down 3 percent from July 2008. Eggs in incubators totaled 32.8 million on August 1, 2009, up slightly from a year ago.

Domestic placements of egg-type pullet chicks for future hatchery supply flocks by leading breeders totaled 342 thousand during July 2009, up 40 percent from July 2008.

## Broiler-Type Chicks Hatched Down 3 Percent

Broiler-type chicks hatched during July 2009 totaled 781 million, down 3 percent from July 2008. Eggs in incubators totaled 628 million on August 1, 2009, down 3 percent from a year earlier.

Leading breeders placed 6.21 million broiler-type pullet chicks for future domestic hatchery supply flocks during July 2009, down 4 percent from July 2008.



## Contents

	<b>Page</b>
U.S. Average Number of Layers on Hand and Egg Production.....	1
U.S. Layers on Hand and Eggs Produced by Type, Forced Molt, and Pullets.....	3
Layers on Hand and Eggs Produced by State.....	5
Egg Production by Type and State .....	7
Forced Molt .....	9
U.S. Hatchery Production Summary .....	10
Egg-Type Hatchery .....	11
Egg-Type Intended Placements .....	12
Broiler-Type Hatchery .....	12
Broiler-Type Intended Placements.....	14
Reliability of Chickens and Eggs Estimates.....	15
Regional Listing .....	16
Terms and Definitions of Chickens and Eggs Estimates.....	16
Information Contacts.....	16

**All Layers: Average Number on Hand During the Month,  
United States, 2008-09**

Month	2008	2009
	<i>1,000 Layers</i>	<i>1,000 Layers</i>
Dec <sup>1</sup>	346,225	340,302
Jan	344,737	340,936
Feb	343,299	340,614
Mar	342,017	340,455
Apr	340,838	339,745
May	340,116	336,695
Jun <sup>2</sup>	338,664	333,388
Jul	336,276	332,602
Aug	335,265	
Sep	334,489	
Oct	334,937	
Nov	337,995	

<sup>1</sup> December preceding year.

<sup>2</sup> Revised 2009 only.

**Eggs: Production During the Month by Type,  
United States, 2008-09**

Month	Total Eggs <sup>1</sup>		Table Eggs		Hatching Eggs	
	2008	2009	2008	2009	2008	2009
	<i>Million Eggs</i>	<i>Million Eggs</i>	<i>Million Eggs</i>	<i>Million Eggs</i>	<i>Million Eggs</i>	<i>Million Eggs</i>
Dec <sup>2</sup>	7,808	7,768	6,666	6,701	1,143	1,068
Jan	7,646	7,666	6,498	6,591	1,149	1,075
Feb	7,114	6,892	6,034	5,906	1,080	985
Mar	7,675	7,724	6,517	6,632	1,159	1,093
Apr	7,373	7,461	6,256	6,408	1,117	1,053
May	7,564	7,597	6,409	6,505	1,155	1,092
Jun <sup>2</sup>	7,367	7,347	6,262	6,291	1,104	1,056
Jul	7,599	7,586	6,474	6,505	1,125	1,081
Aug	7,551		6,436		1,115	
Sep	7,339		6,272		1,067	
Oct	7,625		6,538		1,088	
Nov	7,490		6,446		1,044	
During Year <sup>1</sup>	90,151		76,811		13,346	

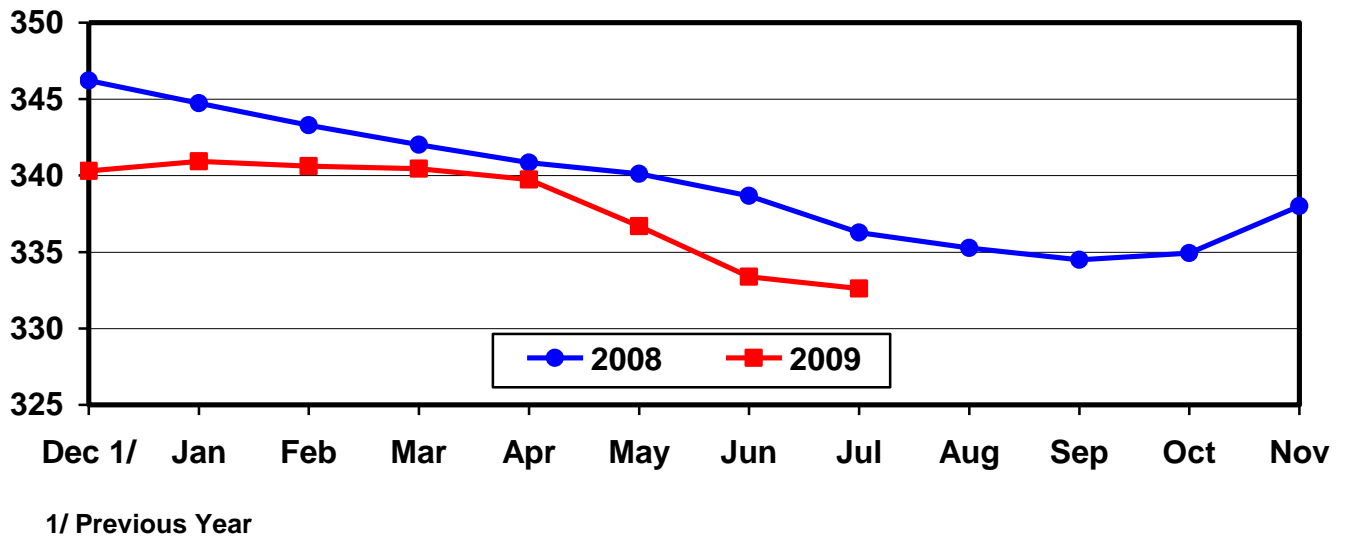
<sup>1</sup> Totals may not add due to rounding.

<sup>2</sup> December preceding year.

<sup>3</sup> Revised 2009 only.

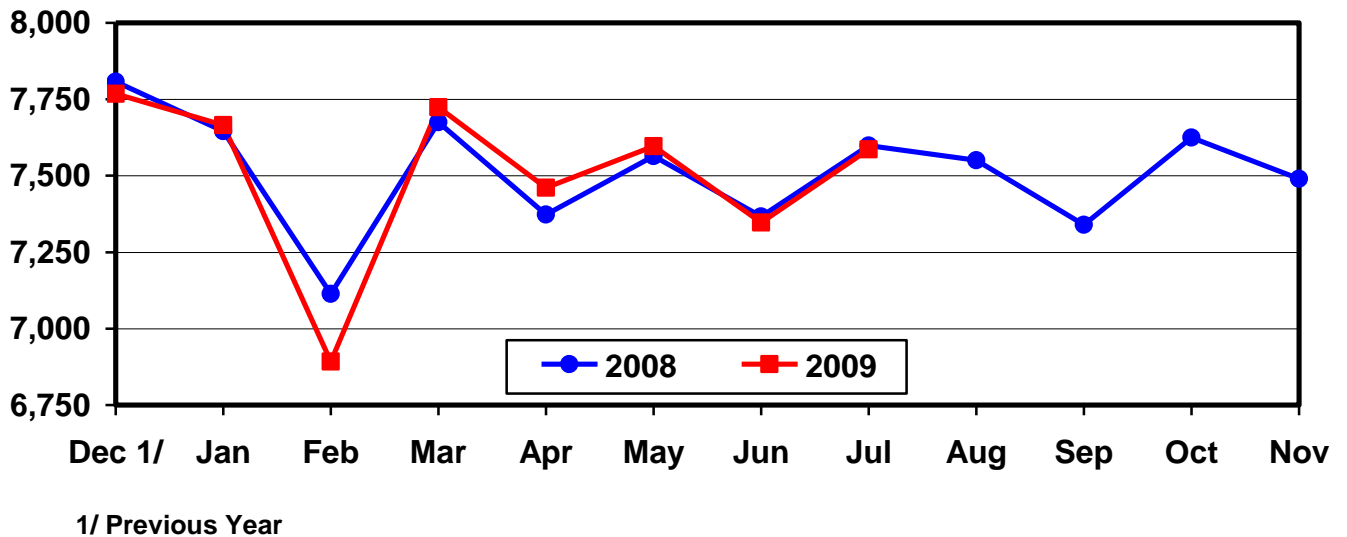
## U.S. Average Number of Layers During the Month

Million Layers



## U.S. All Egg Production During the Month

Million Eggs



**Layers and Eggs: Layers on Hand and Eggs Produced by Type,  
and Forced Molt, United States, June-July 2008-09**

Item	Unit	2008	2009 <sup>1</sup>	2009 as % of 2008
Layers During Jun <sup>2</sup>	1,000			
All Layers		338,664	333,388	98
Table Egg Type		278,830	276,535	99
Hatching Egg Type		59,834	56,853	95
Broiler-Type Hatching		57,048	53,949	95
Egg-Type Hatching		2,786	2,904	104
Eggs per 100 Layers During Jun	Number			
All Layers		2,175	2,204	101
Table Egg Type		2,246	2,275	101
Hatching Egg Type		1,845	1,857	101
Broiler-Type Hatching		1,821	1,828	100
Egg-Type Hatching		2,333	2,410	103
Eggs Produced During Jun <sup>2</sup>	Million			
All Layers		7,367	7,347	100
Table Egg Type		6,262	6,291	100
Hatching Egg Type		1,104	1,056	96
Broiler-Type Hatching		1,039	986	95
Egg-Type Hatching		65	70	108
Layers on Jul 1 <sup>2</sup>	1,000			
All Layers		337,416	332,227	98
Table Egg Type		278,206	275,638	99
Hatching Egg Type		59,210	56,589	96
Broiler-Type Hatching		56,486	53,701	95
Egg-Type Hatching		2,724	2,888	106
Eggs per 100 Layers on Jul 1	Number			
All Layers		73.3	73.7	101
Table Egg Type		75.8	76.2	101
Hatching Egg Type		61.5	61.5	100
Broiler-Type Hatching		60.7	60.6	100
Egg-Type Hatching		77.6	79.3	102
Forced Molt Layers on Jul 1	Percent			
Percent Being Molted		3.4	3.4	100
Percent with Molt Completed		20.8	20.6	99
Layers Sold for Slaughter During Jun	1,000	12,585	14,078	112
Layers Rendered, Died, Destroyed, Composted or Disappeared For Any Reason During Jun	1,000	9,079	7,789	86
Pullets on Jul 1	1,000	102,538	101,076	99
Pullets Added During Jun <sup>3</sup>	1,000	20,996	20,778	99

<sup>1</sup> Revised.

<sup>2</sup> Totals may not add due to rounding.

<sup>3</sup> Pullet chicks less than 3 days old added to pullet flocks.

**Layers and Eggs: Layers on Hand and Eggs Produced by Type,  
and Forced Molt, United States, July-August 2008-09**

Item	Unit	2008	2009	2009 as % of 2008
Layers During Jul <sup>1</sup>	1,000			
All Layers		336,276	332,602	99
Table Egg Type		277,447	276,423	100
Hatching Egg Type		58,829	56,179	95
Broiler-Type Hatching		56,102	53,288	95
Egg-Type Hatching		2,727	2,891	106
Eggs per 100 Layers During Jul	Number			
All Layers		2,260	2,281	101
Table Egg Type		2,333	2,353	101
Hatching Egg Type		1,912	1,924	101
Broiler-Type Hatching		1,889	1,895	100
Egg-Type Hatching		2,384	2,456	103
Eggs Produced During Jul <sup>1</sup>	Million			
All Layers		7,599	7,586	100
Table Egg Type		6,474	6,505	100
Hatching Egg Type		1,125	1,081	96
Broiler-Type Hatching		1,060	1,010	95
Egg-Type Hatching		65	71	109
Layers on Aug 1 <sup>1</sup>	1,000			
All Layers		335,094	332,930	99
Table Egg Type		276,666	277,183	100
Hatching Egg Type		58,428	55,747	95
Broiler-Type Hatching		55,706	52,863	95
Egg-Type Hatching		2,722	2,884	106
Eggs per 100 Layers on Aug 1	Number			
All Layers		72.4	73.4	101
Table Egg Type		74.7	75.6	101
Hatching Egg Type		61.5	62.4	101
Broiler-Type Hatching		60.8	61.4	101
Egg-Type Hatching		75.7	79.5	105
Forced Molt Layers on Aug 1	Percent			
Percent Being Molted		3.9	2.8	72
Percent with Molt Completed		21.2	21.2	100
Layers Sold for Slaughter During Jul	1,000	13,491	14,058	104
Layers Rendered, Died, Destroyed, Composted or Disappeared For Any Reason During Jul	1,000	8,390	7,506	89
Pullets on Aug 1	1,000	103,190	100,832	98
Pullets Added During Jul <sup>2</sup>	1,000	21,137	22,786	108

<sup>1</sup> Totals may not add due to rounding.

<sup>2</sup> Pullet chicks less than 3 days old added to pullet flocks.

**Layers and Eggs: Layers on Hand and Eggs Produced by State  
and United States, During June 2008-09**

State	Table Egg Layers in Flocks 30,000 and Above		All Layers		Eggs per 100 for All Layers	
	2008	2009 <sup>1</sup>	2008	2009 <sup>1</sup>	2008	2009 <sup>1</sup>
	<i>1,000</i>	<i>1,000</i>	<i>1,000</i>	<i>1,000</i>	<i>Number</i>	<i>Number</i>
AL	1,220	1,294	9,314	9,192	1,879	1,871
AR	3,600	3,292	13,565	12,176	1,917	1,955
CA	20,342	19,114	20,636	19,424	2,132	2,234
CO	3,172	3,113	3,716	3,601	2,234	2,472
CT	2,722	2,882	2,786	2,945	2,261	2,275
FL	9,824	9,153	10,232	9,512	2,160	2,208
GA	9,046	8,782	18,402	17,423	1,994	2,038
HI	313	300	335	325	1,791	1,754
IL	5,085	4,917	5,312	5,122	2,203	2,284
IN	23,540	22,305	24,230	23,006	2,245	2,308
IA	52,518	52,679	53,432	53,542	2,253	2,215
ME	3,832	3,319	3,908	3,411	2,201	2,082
MD	2,223	1,967	2,366	2,114	2,113	2,129
MI	9,096	9,792	9,257	9,952	2,301	2,291
MN	9,516	9,506	10,006	10,024	2,259	2,205
MS	1,522	1,392	6,348	6,086	1,969	2,021
MO	5,568	6,109	6,899	7,419	2,247	2,251
NE	9,329	9,424	9,379	9,474	2,356	2,396
NY	3,753	3,821	3,960	4,038	2,374	2,402
NC	4,878	5,394	12,425	12,609	1,988	2,086
OH	25,968	25,935	26,429	26,404	2,198	2,257
OR	2,498	2,181	2,637	2,333	2,351	2,486
PA	20,424	21,250	21,529	22,319	2,360	2,375
SC	3,287	3,060	4,583	4,422	2,051	2,035
SD	2,437	2,362	2,497	2,402	2,243	2,290
TX	13,445	12,716	18,041	17,207	2,178	2,174
VA	1,284	1,170	3,100	2,997	2,000	1,969
WA	5,419	5,868	5,484	5,983	2,279	2,357
WI	4,133	4,221	4,541	4,792	2,180	2,254
Oth Sts <sup>2</sup>	14,645	14,748	23,315	23,134	2,102	2,114
US	274,639	272,066	338,664	333,388	2,175	2,204

<sup>1</sup> Revised.

<sup>2</sup> Not published separately to avoid disclosing data for individual operations.



**Layers and Eggs: Layers on Hand and Eggs Produced by State  
and United States, During July 2008-09**

State	Table Egg Layers in Flocks 30,000 and Above		All Layers		Eggs per 100 for All Layers	
	2008	2009	2008	2009	2008	2009
	<i>1,000</i>	<i>1,000</i>	<i>1,000</i>	<i>1,000</i>	<i>Number</i>	<i>Number</i>
AL	1,255	1,208	9,215	8,958	1,932	1,942
AR	3,613	3,311	13,198	12,034	2,000	2,028
CA	20,080	19,077	20,378	19,385	2,208	2,321
CO	3,305	3,141	3,817	3,628	2,436	2,453
CT	2,743	3,195	2,808	3,258	2,315	2,394
FL	9,591	9,351	9,974	9,711	2,206	2,255
GA	9,086	8,682	18,236	17,288	2,067	2,129
HI	311	301	333	327	1,892	1,835
IL	5,154	4,878	5,381	5,087	2,286	2,359
IN	23,193	22,237	23,896	22,962	2,327	2,317
IA	52,380	52,648	53,304	53,496	2,323	2,292
ME	3,801	3,328	3,873	3,416	2,169	2,196
MD	2,312	1,877	2,459	2,021	2,277	2,276
MI	9,169	9,506	9,331	9,656	2,422	2,465
MN	9,341	9,578	9,811	10,079	2,334	2,252
MS	1,537	1,347	6,298	5,783	2,064	2,110
MO	5,317	6,049	6,622	7,347	2,386	2,355
NE	9,368	9,558	9,418	9,608	2,410	2,456
NY	3,635	3,855	3,846	4,078	2,470	2,501
NC	4,723	5,362	12,213	12,516	2,063	2,117
OH	25,986	25,656	26,436	26,114	2,342	2,328
OR	2,512	2,233	2,652	2,384	2,564	2,559
PA	20,447	21,439	21,565	22,507	2,430	2,457
SC	3,058	3,014	4,338	4,333	2,282	2,146
SD	2,407	2,363	2,467	2,403	2,229	2,455
TX	13,511	12,893	18,096	17,379	2,244	2,284
VA	1,288	1,315	3,035	3,171	2,043	2,018
WA	5,361	5,752	5,425	5,867	2,304	2,369
WI	4,076	4,237	4,485	4,808	2,341	2,371
Oth Sts <sup>1</sup>	14,696	14,562	23,366	22,998	2,178	2,209
US	273,256	271,953	336,276	332,602	2,260	2,281

<sup>1</sup> Not published separately to avoid disclosing data for individual operations.

**Egg Production: By Type, State, and United States,  
June 2008-09**

State	Total Production <sup>1</sup>		Table Eggs <sup>2</sup>		Hatching Eggs <sup>2</sup>	
	2008	2009 <sup>3</sup>	2008	2009 <sup>3</sup>	2008	2009 <sup>3</sup>
	<i>Million Eggs</i>	<i>Million Eggs</i>	<i>Million Eggs</i>	<i>Million Eggs</i>	<i>Million Eggs</i>	<i>Million Eggs</i>
AL	175	172	29	29	146	143
AR	260	238	82	77	178	161
CA	440	434				
CO	83	89				
CT	63	67				
FL	221	210	214	205	7	5
GA	367	355	192	193	175	162
HI	6.0	5.7	6.0	5.7	0	0
IL	117	117	114	114	3	3
IN	544	531	532	518	12	13
IA	1,204	1,186	1,190	1,173	14	13
ME	86	71				
MD	50	45	48	43	2	2
MI	213	228				
MN	226	221	217	212	9	9
MS	125	123	36	35	89	88
MO	155	167				
NE	221	227	221	227	0	0
NY	94	97				
NC	247	263	114	135	133	128
OH	581	596				
OR	62	58	60	56	2	2
PA	508	530	489	511	19	19
SC	94	90	72	68	22	22
SD	56	55	56	55	0	0
TX	393	374				
VA	62	59	30	27	32	32
WA	125	141				
WI	99	108				
Oth Sts <sup>4</sup>	490	489	350	355	139	134
US <sup>1</sup>	7,367	7,347	6,262	6,291	1,104	1,056

<sup>1</sup> Totals may not add due to rounding.

<sup>2</sup> Data by type of flock not shown for some States to avoid disclosing individual operations, data included in US totals.

<sup>3</sup> Revised.

<sup>4</sup> Not published separately to avoid disclosing data for individual operations.

**Egg Production: By Type, State, and United States,  
July 2008-09**

State	Total Production <sup>1</sup>		Table Eggs <sup>2</sup>		Hatching Eggs <sup>2</sup>	
	2008	2009	2008	2009	2008	2009
	<i>Million Eggs</i>	<i>Million Eggs</i>	<i>Million Eggs</i>	<i>Million Eggs</i>	<i>Million Eggs</i>	<i>Million Eggs</i>
AL	178	174	30	29	148	145
AR	264	244	85	80	179	164
CA	450	450				
CO	93	89				
CT	65	78				
FL	220	219	214	214	6	5
GA	377	368	199	200	178	168
HI	6.3	6.0	6.3	6.0	0	0
IL	123	120	119	117	4	3
IN	556	532	544	519	12	13
IA	1,238	1,226	1,223	1,213	15	13
ME	84	75				
MD	56	46	54	44	2	2
MI	226	238				
MN	229	227	220	218	9	9
MS	130	122	38	35	92	87
MO	158	173				
NE	227	236	227	236	0	0
NY	95	102				
NC	252	265	118	134	134	131
OH	619	608				
OR	68	61	66	59	2	2
PA	524	553	504	534	20	19
SC	99	93	76	70	23	23
SD	55	59	55	59	0	0
TX	406	397				
VA	62	64	30	29	32	35
WA	125	139				
WI	105	114				
Oth Sts <sup>3</sup>	509	508	365	370	144	138
US <sup>1</sup>	7,599	7,586	6,474	6,505	1,125	1,081

<sup>1</sup> Totals may not add due to rounding.

<sup>2</sup> Data by type of flock not shown for some States to avoid disclosing individual operations, data included in US totals.

<sup>3</sup> Not published separately to avoid disclosing data for individual operations.

**Forced Molt: Percent of All Layers by Month,  
United States, 2008-09**

Month	Percent Being Molted <sup>1</sup>		Percent with Molt Completed <sup>1</sup>	
	2008	2009	2008	2009
	<i>Percent</i>	<i>Percent</i>	<i>Percent</i>	<i>Percent</i>
Jan	3.0	3.2	22.7	21.2
Feb	3.9	3.4	21.7	21.4
Mar	2.4	3.4	22.1	21.4
Apr	2.8	1.9	21.3	21.7
May	4.1	4.5	20.8	20.5
Jun	3.7	3.4	20.9	21.3
Jul <sup>2</sup>	3.4	3.4	20.8	20.6
Aug	3.9	2.8	21.2	21.2
Sep	3.9		20.8	
Oct	3.7		21.9	
Nov	2.1		22.7	
Dec	1.9		22.1	

<sup>1</sup> As of first of month.

<sup>2</sup> Revised 2009 only.

**Forced Molt: Percent of All Layers by State  
and United States, August 1, 2008-09**

State	Percent Being Molted <sup>1</sup>		Percent with Molt Completed <sup>1</sup>	
	2008	2009	2008	2009
	<i>Percent</i>	<i>Percent</i>	<i>Percent</i>	<i>Percent</i>
AL	1.5	1.5	3.5	6.0
AR	1.0	0.0	10.0	11.0
CA	3.5	4.0	32.0	30.5
CO	1.5	1.5	19.5	14.5
CT	13.5	6.5	9.5	25.0
FL	7.5	4.5	31.0	29.0
GA	4.0	3.5	10.0	13.0
HI	11.0	10.0	56.0	50.0
IL	11.0	7.0	26.5	30.5
IN	6.0	5.0	32.5	32.0
IA	4.5	2.5	33.5	32.5
ME	0.0	0.0	0.0	0.0
MD	0.0	0.0	13.5	22.5
MI	4.0	1.0	19.0	18.0
MN	3.5	2.5	29.5	24.5
MS	1.5	3.0	10.5	9.5
MO	1.0	3.5	15.0	14.0
NE	2.0	0.0	3.0	2.0
NY	1.0	2.5	6.0	7.5
NC	1.0	2.0	8.5	7.5
OH	2.5	2.0	19.0	21.5
OR	6.0	4.0	22.0	36.0
PA	6.0	1.5	11.5	14.0
SC	2.5	3.5	20.0	20.5
SD	11.0	6.5	29.0	20.0
TX	5.5	1.5	21.5	20.0
VA	0.0	9.5	18.5	10.0
WA	5.5	7.0	27.0	22.0
WI	2.5	4.0	32.5	28.0
Oth Sts <sup>2</sup>	3.0	2.7	19.8	19.7
US	3.9	2.8	21.2	21.2

<sup>1</sup> As of first of month.

<sup>2</sup> Not published separately to avoid disclosing data for individual operations.

**Hatchery Production: Eggs in Incubators, Chicks Hatched,  
and Placements by Type, United States, July-August 2008-09**

Item	2008	2009	2009 as % of 2008
	<i>1,000</i>	<i>1,000</i>	<i>Percent</i>
Egg-Type			
Eggs in Incubators on Aug 1	32,663	32,782	100
Chicks Hatched During Jul	37,250	36,282	97
Chicks Hatched Jan thru Jul	283,077	273,211	97
Pullets Hatched During Jul for Intended Placements in Hatchery Supply Flocks	244	342	140
7-18 Months Earlier <sup>1</sup>	2,982	2,958	99
Broiler-Type			
Eggs in Incubators on Aug 1	649,735	627,645	97
Chicks Hatched During Jul	805,182	781,215	97
Chicks Hatched Jan thru Jul	5,676,043	5,357,180	94
Pullets Hatched During Jul for Intended Placements in Hatchery Supply Flocks	6,462	6,214	96
7-15 Months Earlier <sup>2</sup>	66,170	64,183	97

<sup>1</sup> 2009 includes pullet chicks hatched Jan 2008 through Dec 2008.

<sup>2</sup> 2009 includes pullet chicks hatched Apr 2008 through Dec 2008.

**Egg-Type Eggs in Incubators: By Region and United States,  
August 1, 2008-09**

Region	2008	2009	2009 as % of 2008
	<i>1,000</i>	<i>1,000</i>	<i>Percent</i>
North Atlantic	4,560	4,191	92
E North Central	6,653	6,761	102
W North Central	8,493	7,377	87
South Atlantic	2,999	2,783	93
South Central	5,545	4,397	79
West	4,413	7,273	165
US	32,663	32,782	100

**Egg-Type Chicks Hatched: By Month, United States, 2008-09**

Month	By Months			Cumulative		
	2008	2009	2009 as % of 2008	2008	2009	2009 as % of 2008
	<i>1,000</i>	<i>1,000</i>	<i>Percent</i>	<i>1,000</i>	<i>1,000</i>	<i>Percent</i>
Jan	40,256	38,083	95	40,256	38,083	95
Feb	38,534	36,861	96	78,790	74,944	95
Mar	41,954	40,137	96	120,744	115,081	95
Apr	42,329	40,621	96	163,073	155,702	95
May	41,826	37,774	90	204,899	193,476	94
Jun	40,928	43,453	106	245,827	236,929	96
Jul	37,250	36,282	97	283,077	273,211	97
Aug	35,578			318,655		
Sep	37,111			355,766		
Oct	40,198			395,964		
Nov	34,187			430,151		
Dec	37,091			467,242		

**Intended Placements: Egg-Type Pullet Chicks for Hatchery Supply  
Flocks by Month and Total, United States, 2008-09**

Month	Pullet Chicks Hatched		2009 as % of 2008	Cumulative Potential Plcmts Relative to Current Supply Flocks 7-18 Months Earlier <sup>1</sup>	
	2008	2009		2009	2010
	<i>1,000</i>	<i>1,000</i>	<i>Percent</i>	<i>1,000</i>	<i>1,000</i>
Jan	198	240	121	2,907	3,198
Feb	271	256	94	2,968	3,296
Mar	245	277	113	2,969	
Apr	264	307	116	2,879	
May	227	275	121	2,968	
Jun	231	321	139	3,004	
Jul	244	342	140	2,958	
Aug	279			3,000	
Sep	210			2,985	
Oct	273			3,017	
Nov	317			3,060	
Dec	199			3,108	
Total	2,958				

<sup>1</sup> For July 2009, includes breeder pullet chicks hatched Jan 2008 through Dec 2008. The 7-18 months represent the first laying cycle. Molting and additional laying cycles will increase the cumulative potential placements.

**Broiler-Type Eggs in Incubators: By Region  
and United States, August 1, 2008-09**

Region	2008	2009	2009 as % of 2008
	<i>1,000</i>	<i>1,000</i>	<i>Percent</i>
North Atlantic	13,399	12,146	91
E North Central	12,191	12,080	99
W North Central	28,591	29,268	102
South Atlantic	239,237	231,554	97
South Central	333,740	321,023	96
West	22,577	21,574	96
US	649,735	627,645	97

**Broiler-Type Chicks Hatched: By State  
and United States, July 2008-09**

State	During July			Jan-Jul		
	2008	2009	2009 as % of 2008	2008	2009	2009 as % of 2008
	<i>1,000</i>	<i>1,000</i>	<i>Percent</i>	<i>1,000</i>	<i>1,000</i>	<i>Percent</i>
AL	114,172	111,335	98	818,853	756,942	92
AR	97,655	86,874	89	699,582	612,686	88
DE	13,178	13,243	100	98,116	89,421	91
FL	5,095	3,788	74	34,926	25,477	73
GA	123,297	117,373	95	866,301	810,827	94
KY	28,396	28,548	101	196,709	194,412	99
LA	13,798	12,455	90	96,660	76,645	79
MD	31,902	32,926	103	226,191	224,449	99
MS	70,011	68,649	98	485,346	461,436	95
NC	69,616	68,188	98	494,550	474,859	96
OK	25,110	25,097	100	177,342	172,481	97
PA	15,935	13,709	86	107,040	96,172	90
SC	19,459	19,743	101	137,375	138,525	101
TX	57,974	58,876	102	396,517	396,608	100
VA	23,095	23,285	101	158,641	155,044	98
CA, MO, TN, & WV	72,884	71,846	99	505,917	497,438	98
19 Sts <sup>1</sup>	781,577	755,935	97	5,500,066	5,183,422	94
Oth Sts <sup>2</sup>	23,605	25,280	107	175,977	173,758	99
US	805,182	781,215	97	5,676,043	5,357,180	94

<sup>1</sup> States in the weekly hatchery production estimating program.

<sup>2</sup> Not published separately to avoid disclosing data for individual operations.

**Broiler-Type Chicks Hatched: By Month, United States, 2008-09**

Month	By Months			Cumulative		
	2008	2009	2009 as % of 2008	2008	2009	2009 as % of 2008
	<i>1,000</i>	<i>1,000</i>	<i>Percent</i>	<i>1,000</i>	<i>1,000</i>	<i>Percent</i>
Jan	826,027	778,401	94	826,027	778,401	94
Feb	775,280	700,913	90	1,601,307	1,479,314	92
Mar	836,890	783,348	94	2,438,197	2,262,662	93
Apr	801,548	755,862	94	3,239,745	3,018,524	93
May	825,323	786,471	95	4,065,068	3,804,995	94
Jun	805,793	770,970	96	4,870,861	4,575,965	94
Jul	805,182	781,215	97	5,676,043	5,357,180	94
Aug	799,059			6,475,102		
Sep	755,235			7,230,337		
Oct	740,964			7,971,301		
Nov	705,312			8,676,613		
Dec	779,304			9,455,917		



**Intended Placements: Broiler-Type Pullet Chicks for Hatchery  
Supply Flocks by Month and Total, 2008-09**

Month	Pullet Chicks Hatched		2009 as % of 2008	Cumulative Potential Plcmts Relative to Current Supply Flocks 7-15 Months Earlier <sup>1</sup>	
	2008	2009		2009	2010
	<i>1,000</i>	<i>1,000</i>	<i>Percent</i>	<i>1,000</i>	<i>1,000</i>
US Place- ments					
Jan	7,012	7,142	102	65,952	62,645
Feb	7,536	7,215	96	65,444	61,817
Mar	7,090	6,773	96	65,535	
Apr	7,119	6,158	87	65,173	
May	8,217	7,552	92	65,203	
Jun <sup>2</sup>	7,154	7,157	100	64,693	
Jul	6,462	6,214	96	64,183	
Aug	7,697			64,206	
Sep	6,886			63,204	
Oct	7,042			62,823	
Nov	7,026			62,519	
Dec	6,580			62,374	
Annual Total	85,821				
Total Place- ments <sup>3</sup>					
Jan	8,706	8,410	97		
Feb	9,498	8,524	90		
Mar	9,245	8,626	93		
Apr	8,720	7,664	88		
May	10,089	9,255	92		
Jun <sup>4</sup>	9,228	8,830	96		
Jul	8,017	7,469	93		
Aug	9,603				
Sep	8,651				
Oct	8,361				
Nov	8,704				
Dec	8,197				
Annual Total	107,019				

<sup>1</sup> For Jul 2009, includes breeder pullet chicks hatched Apr 2008 through Dec 2008.

<sup>2</sup> Revised 2009 pullet chicks hatched and cumulative placements for January 2010.

<sup>3</sup> U.S. production of intended placements worldwide.

<sup>4</sup> Revised 2009 only.

## Reliability of Chickens and Eggs Estimates

**Survey Procedures:** Primary data for the "**Chickens and Eggs**" report are from weekly and/or monthly questionnaires sent to producers. An attempt is made to collect information for layer and egg estimates from each known contractor and independent producer who has at least 30,000 table egg layers, flocks of hatchery supply layers, or pullet only operations with at least 500 pullets. Coverage for operations with less than 30,000 table egg layers are estimated each month based on data reported in December. Approximately 650 contractors, independent egg producers, and pullet only operations are contacted each month. All known hatcheries, approximately 300, are contacted for information on a weekly and/or monthly basis.

**Estimating Procedures:** Sound statistical methodology is employed to derive estimates from the reported data. All data are analyzed for unusual values. Data from each operation are compared to their own past operating profile and to trends from similar operations. Data for missing operations are estimated based on similar operations or historical data. NASS field offices prepare these estimates by using a combination of survey indications and historic trends. Individual State estimates are reviewed by the Agricultural Statistics Board for reasonableness. Individual hatchery data are summed to State, regional, and U.S. totals.

For chicken hatcheries, chicks hatched consist of all chicks of domesticated breeds including males and chicks destined for hatchery supply flocks and research purposes. Eggs set are eggs in incubators for the purpose of hatching. The relationship of egg-type chicks hatched to chicken inventory and poultry marketings are carefully monitored. The disposition of egg-type chicks hatched prior to placement into the laying flock can vary significantly, which can make comparisons to changes in layer inventory inconsistent over time. Broiler chicks placed are specifically placed on feed for meat production. Intended placement data reported by leading breeders include pullet chicks expected from eggs sold the preceding month. The breeders in this report account for a large percentage of replacement pullets for hatchery supply flocks. Production of replacement pullets by these breeders indicates the number of pullets available to hatchery supply layer flocks several months before the pullets will actually move into the laying flocks. "Hatchery Supply Flocks" include all generations of layers which could lay eggs to supply a hatchery. This includes the generations of parents, grandparents, great-grandparents, pedigree, etc. Also included are research flocks, vaccine flocks, and specific pathogen-free flocks. The broiler cumulative potential placements are a moving total of the intended placements 7-15 months earlier. The egg-type cumulative potential placements of 7-18 months earlier represent the first laying cycle. Molting and additional laying cycles will increase the cumulative potential placements of egg-type hatching flocks.

**Revision Policy:** The previous month's estimates are subject to revision if late reports or corrected data indicates a different level. Additionally, revisions after the monthly report will be made at the end of the marketing year and published in the annual reports of "**Chickens and Eggs Summary**" and "**Hatchery Production**".

**Reliability:** Estimates are based on a census of all known contractors and independent producers who have at least 30,000 table egg layers, flocks of hatchery supply layers, pullet only operations with at least 500 pullets, or operating hatcheries and therefore, have no sampling error. However, estimates are subject to errors such as omission, duplication, and mistakes in reporting, recording, and processing the data. While these errors cannot be measured directly, they are minimized through strict quality controls in the data collection process and a careful review of all reported data for consistency and reasonableness.

To assist in evaluating the reliability of the estimates in this report, the "Root Mean Square Error" is shown for selected items in the following table. The "Root Mean Square Error" is a statistical measure based on past performance and is computed using the differences between first and final estimates. The "Root Mean Square Error" for all layers over the past 24 months is 0.5 percent. This means that chances are 2 out of 3 that the final estimate will not be above or below the current estimate of 333 million layers by more than 0.5 percent. Chances are 9 out of 10 that the difference will not exceed 0.8 percent.

**Reliability of Layer and Egg Estimates**

Item	Root Mean Square Error	90 Percent Confidence Level		Difference Between First and Latest Estimates			Number of Months	
				Average	Smallest	Largest	First Above Latest	First Below Latest
				<i>1,000</i>	<i>1,000</i>	<i>1,000</i>	<i>Number</i>	<i>Number</i>
All Layers	<i>Percent</i> 0.5	<i>Percent</i> 0.8	<i>1,000</i> 26	<i>1,000</i> 945	<i>1,000</i> 4	<i>1,000</i> 3,947	<i>Number</i> 10	<i>Number</i> 14
Eggs	<i>Percent</i> 0.5	<i>Percent</i> 0.8	<i>Million Eggs</i> 1	<i>Million Eggs</i> 22	<i>Million Eggs</i> 0	<i>Million Eggs</i> 75	<i>Number</i> 9	<i>Number</i> 12

**Regional Listing**

North Atlantic: CT, ME, MA, NH, NJ, NY, PA, RI, VT.

East North Central: IL, IN, MI, OH, WI.

West North Central: IA, KS, MN, MO, NE, ND, SD.

South Atlantic: DE, FL, GA, MD, NC, SC, VA, WV.

South Central: AL, AR, KY, LA, MS, OK, TN, TX.

West: AK, AZ, CA, CO, HI, ID, MT, NM, NV, OR, UT, WA, WY.

**Terms and Definitions of Chickens and Eggs Estimates**

**All Layers** includes both table egg and hatching egg flocks regardless of size.

**Intended Placements** are reported by leading breeders. Coverage may not be 100 percent. Includes expected pullet chicks from eggs sold during the preceding month at the rate of 125 pullet chicks per case of 30 dozen eggs.

**Information Contacts**

Listed below are the commodity specialists in the Livestock Branch of the National Agricultural Statistics Service to contact for additional information.

- Dan Kerestes, Chief, Livestock Branch .....(202) 720-3570
- Bruce Boess, Head, Poultry and Specialty Commodities Section.....(202) 720-4447
- David Colwell - Cold Storage .....(202) 720-8784
- Chris Hawthorn - Catfish Processing, Catfish Production, Trout Production,  
Census of Aquaculture, Egg Products, Mink .....(202) 720-0585
- Sharyn Lavender - Broiler Hatchery, Chicken Hatchery, Honey .....(202) 720-3244
- Kim Linonis - Layers, Eggs .....(202) 690-8632
- Troy Marshall - Poultry Slaughter, Turkey Hatchery, Turkeys Raised.....(202) 690-3237

## ACCESS TO REPORTS!!

---

For your convenience, there are several ways to obtain NASS reports, data products, and services:

### INTERNET ACCESS

All NASS reports are available free of charge. For free access, connect to the Internet and go to the NASS Home Page at: [www.nass.usda.gov](http://www.nass.usda.gov).

### E-MAIL SUBSCRIPTION

All NASS reports are available by subscription free of charge direct to your e-mail address. Starting with the NASS Home Page at [www.nass.usda.gov](http://www.nass.usda.gov), under the right navigation, *Receive reports by Email*, click on **National** or **State**. Follow the instructions on the screen.

-----

### PRINTED REPORTS OR DATA PRODUCTS

**CALL OUR TOLL-FREE ORDER DESK: 800-999-6779 (U.S. and Canada)**  
**Other areas, please call 703-605-6220      FAX: 703-605-6900**  
**(Visa, MasterCard, check, or money order acceptable for payment.)**

-----

### ASSISTANCE

For **assistance** with general agricultural statistics or further information about NASS or its products or services, contact the **Agricultural Statistics Hotline** at **800-727-9540**, 7:30 a.m. to 4:00 p.m. ET, or e-mail: [nass@nass.usda.gov](mailto:nass@nass.usda.gov).

The U.S. Department of Agriculture (USDA) prohibits discrimination in all its programs and activities on the basis of race, color, national origin, age, disability, and where applicable, sex, marital status, familial status, parental status, religion, sexual orientation, genetic information, political beliefs, reprisal, or because all or a part of an individual's income is derived from any public assistance program. (Not all prohibited bases apply to all programs.) Persons with disabilities who require alternative means for communication of program information (Braille, large print, audiotape, etc.) should contact USDA's TARGET Center at (202) 720-2600 (voice and TDD).

To file a complaint of discrimination, write to USDA, Director, Office of Civil Rights, 1400 Independence Avenue, S.W., Washington, D.C. 20250-9410, or call (800) 795-3272 (voice) or (202) 720-6382 (TDD). USDA is an equal opportunity provider and employer.