

Chickens and Eggs

Released March 22, 2010, by the National Agricultural Statistics Service (NASS), Agricultural Statistics Board, U.S. Department of Agriculture. For information on "Layers and Eggs" call Kim Linonis at (202) 690-8632, for "Chicks Hatched" call Troy Marshall at (202) 720-3244, office hours 7:30 a.m. to 4:00 p.m. ET.

February Egg Production Down Slightly

U.S. egg production totaled 6.90 billion during February 2010, down slightly from last year. Production included 5.92 billion table eggs, and 983 million hatching eggs, of which 915 million were broiler-type and 68 million were egg-type. The total number of layers during February 2010 averaged 339 million, down 1 percent from last year. February egg production per 100 layers was 2,038 eggs, up 1 percent from February 2009.

All layers in the U.S. on March 1, 2010 totaled 339 million, down slightly from last year. The 339 million layers consisted of 281 million layers producing table or market type eggs, 55.0 million layers producing broiler-type hatching eggs, and 2.96 million layers producing egg-type hatching eggs. Rate of lay per day on March 1, 2010, averaged 73.1 eggs per 100 layers, up 1 percent from March 1, 2009.

Egg-Type Chicks Hatched Up 9 Percent

Egg-type chicks hatched during February 2010 totaled 40.1 million, up 9 percent from February 2009. Eggs in incubators totaled 38.8 million on March 1, 2010, up 4 percent from a year ago.

Domestic placements of egg-type pullet chicks for future hatchery supply flocks by leading breeders totaled 296 thousand during February 2010, up 16 percent from February 2009.

Broiler-Type Chicks Hatched Down Slightly

Broiler-type chicks hatched during February 2010 totaled 700 million, down slightly from February 2009. Eggs in incubators totaled 643 million on March 1, 2010, up 1 percent from a year earlier.

Leading breeders placed 7.36 million broiler-type pullet chicks for future domestic hatchery supply flocks during February 2010, up 2 percent from February 2009.

Contents

	Page
U.S. Average Number of Layers on Hand and Egg Production.....	1
U.S. Layers on Hand and Eggs Produced by Type, Forced Molt, and Pullets.....	3
Layers on Hand and Eggs Produced by State.....	5
Egg Production by Type and State	7
Forced Molt	9
U.S. Hatchery Production Summary	10
Egg-Type Hatchery	11
Egg-Type Intended Placements	12
Broiler-Type Hatchery	12
Broiler-Type Intended Placements.....	14
Reliability of Chickens and Eggs Estimates.....	15
Regional Listing	16
Terms and Definitions of Chickens and Eggs Estimates.....	16
Information Contacts.....	16

**All Layers: Average Number on Hand During the Month,
United States, 2009-10**

Month	2009	2010
	<i>1,000 Layers</i>	<i>1,000 Layers</i>
Dec ¹	340,638	339,744
Jan ²	341,400	339,009
Feb	341,068	338,697
Mar	340,914	
Apr	340,170	
May	337,116	
Jun	334,032	
Jul	332,740	
Aug	332,612	
Sep	333,885	
Oct	335,819	
Nov	338,121	

¹ December preceding year.

² Revised 2010 only.

**Eggs: Production During the Month by Type,
United States, 2009-10**

Month	Total Eggs ¹		Table Eggs		Hatching Eggs	
	2009	2010	2009	2010	2009	2010
	<i>Million Eggs</i>	<i>Million Eggs</i>	<i>Million Eggs</i>	<i>Million Eggs</i>	<i>Million Eggs</i>	<i>Million Eggs</i>
Dec ²	7,778	7,827	6,711	6,758	1,068	1,068
Jan ³	7,678	7,688	6,603	6,606	1,075	1,082
Feb	6,903	6,902	5,917	5,919	985	983
Mar	7,737		6,645		1,093	
Apr	7,472		6,419		1,053	
May	7,607		6,515		1,092	
Jun	7,360		6,301		1,059	
Jul	7,590		6,505		1,085	
Aug	7,593		6,518		1,075	
Sep	7,376		6,349		1,027	
Oct	7,696		6,638		1,059	
Nov	7,569		6,541		1,027	
During Year ¹	90,359		77,664		12,698	

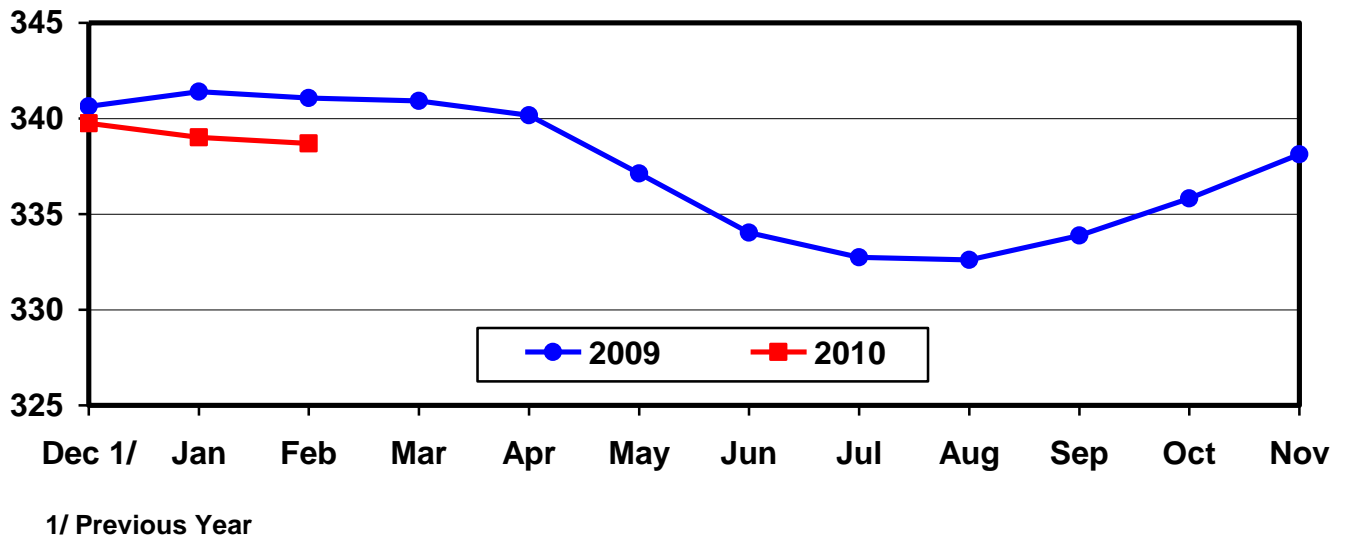
¹ Totals may not add due to rounding.

² December preceding year.

³ Revised 2010 only.

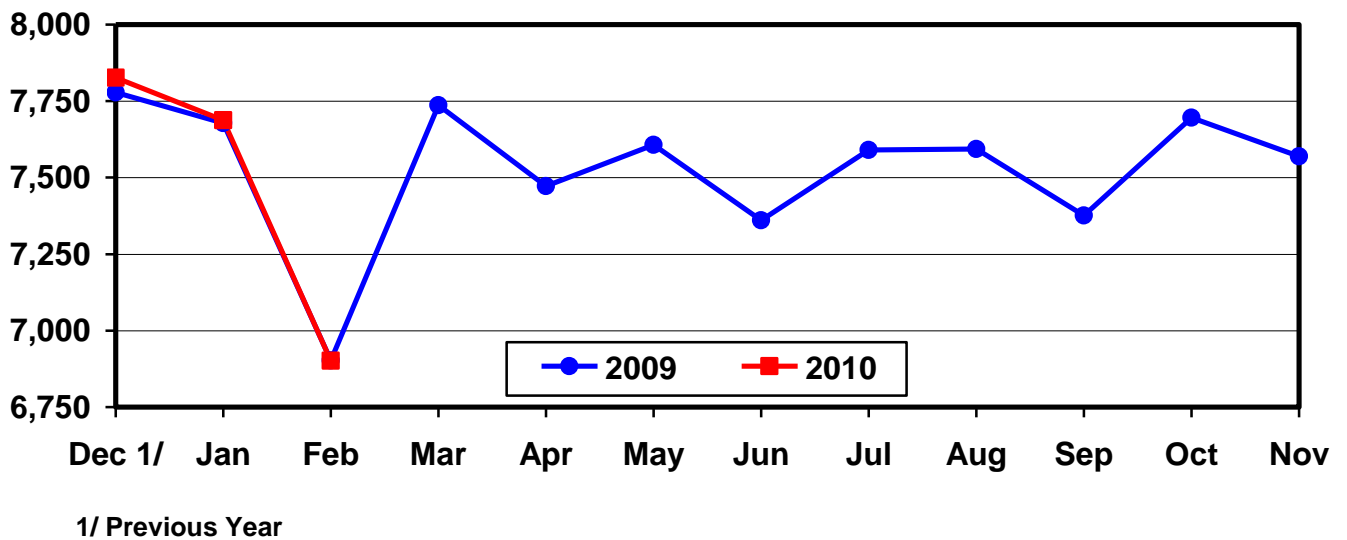
U.S. Average Number of Layers During the Month

Million Layers



U.S. All Egg Production During the Month

Million Eggs



**Layers and Eggs: Layers on Hand and Eggs Produced by Type,
and Forced Molt, United States, January-February 2009-10**

Item	Unit	2009	2010 ¹	2010 as % of 2009
Layers During Jan ²	1,000			
All Layers		341,400	339,009	99
Table Egg Type		284,457	281,875	99
Hatching Egg Type		56,943	57,134	100
Broiler-Type Hatching		54,002	54,176	100
Egg-Type Hatching		2,941	2,958	101
Eggs per 100 Layers During Jan	Number			
All Layers		2,249	2,268	101
Table Egg Type		2,321	2,344	101
Hatching Egg Type		1,888	1,894	100
Broiler-Type Hatching		1,857	1,859	100
Egg-Type Hatching		2,448	2,535	104
Eggs Produced During Jan ²	Million			
All Layers		7,678	7,688	100
Table Egg Type		6,603	6,606	100
Hatching Egg Type		1,075	1,082	101
Broiler-Type Hatching		1,003	1,007	100
Egg-Type Hatching		72	75	104
Layers on Feb 1 ²	1,000			
All Layers		341,388	338,091	99
Table Egg Type		283,939	280,597	99
Hatching Egg Type		57,449	57,494	100
Broiler-Type Hatching		54,415	54,533	100
Egg-Type Hatching		3,034	2,961	98
Eggs per 100 Layers on Feb 1	Number			
All Layers		72.1	72.5	101
Table Egg Type		74.4	74.8	101
Hatching Egg Type		60.7	60.8	100
Broiler-Type Hatching		59.7	59.7	100
Egg-Type Hatching		78.9	81.8	104
Forced Molt Layers on Feb 1	Percent			
Percent Being Molted		3.4	3.6	106
Percent with Molt Completed		21.6	20.1	93
Layers Sold for Slaughter During Jan	1,000	14,101	13,995	99
Layers Rendered, Died, Destroyed, Composted or Disappeared For Any Reason During Jan	1,000	6,748	7,682	114
Pullets on Feb 1	1,000	101,422	102,312	101
Pullets Added During Jan ³	1,000	22,670	20,379	90

¹ Revised.

² Totals may not add due to rounding.

³ Pullet chicks less than 3 days old added to pullet flocks.

**Layers and Eggs: Layers on Hand and Eggs Produced by Type,
and Forced Molt, United States, February-March 2009-10**

Item	Unit	2009	2010	2010 as % of 2009
Layers During Feb ¹	1,000			
All Layers		341,068	338,697	99
Table Egg Type		283,670	280,954	99
Hatching Egg Type		57,398	57,743	101
Broiler-Type Hatching		54,341	54,781	101
Egg-Type Hatching		3,057	2,962	97
Eggs per 100 Layers During Feb	Number			
All Layers		2,024	2,038	101
Table Egg Type		2,086	2,107	101
Hatching Egg Type		1,716	1,702	99
Broiler-Type Hatching		1,687	1,670	99
Egg-Type Hatching		2,224	2,296	103
Eggs Produced During Feb ¹	Million			
All Layers		6,903	6,902	100
Table Egg Type		5,917	5,919	100
Hatching Egg Type		985	983	100
Broiler-Type Hatching		917	915	100
Egg-Type Hatching		68	68	100
Layers on Mar 1 ¹	1,000			
All Layers		340,716	339,266	100
Table Egg Type		283,386	281,293	99
Hatching Egg Type		57,330	57,973	101
Broiler-Type Hatching		54,256	55,016	101
Egg-Type Hatching		3,074	2,957	96
Eggs per 100 Layers on Mar 1	Number			
All Layers		72.4	73.1	101
Table Egg Type		74.5	75.6	101
Hatching Egg Type		61.7	60.6	98
Broiler-Type Hatching		60.8	59.5	98
Egg-Type Hatching		79.1	81.9	104
Forced Molt Layers on Mar 1	Percent			
Percent Being Molted		3.4	3.2	94
Percent with Molt Completed		21.5	21.0	98
Layers Sold for Slaughter During Feb	1,000	14,551	13,523	93
Layers Rendered, Died, Destroyed, Composted or Disappeared For Any Reason During Feb	1,000	7,278	6,752	93
Pullets on Mar 1	1,000	99,870	101,715	102
Pullets Added During Feb ²	1,000	20,833	21,728	104

¹ Totals may not add due to rounding.

² Pullet chicks less than 3 days old added to pullet flocks.

**Layers and Eggs: Layers on Hand and Eggs Produced by State
and United States, During January 2009-10**

State	Table Egg Layers in Flocks 30,000 and Above		All Layers		Eggs per 100 for All Layers	
	2009	2010 ¹	2009	2010 ¹	2009	2010 ¹
	<i>1,000</i>	<i>1,000</i>	<i>1,000</i>	<i>1,000</i>	<i>Number</i>	<i>Number</i>
AL	1,384	1,232	9,405	9,170	1,914	1,908
AR	3,575	3,197	12,923	12,299	1,989	1,976
CA	19,630	19,031	19,938	19,331	2,242	2,318
CO	3,456	3,044	3,971	3,589	2,493	2,508
CT	2,729	2,518	2,786	2,585	2,297	2,321
FL	9,829	9,581	10,173	9,903	2,261	2,292
GA	9,479	9,020	18,303	17,702	2,098	2,169
HI	312	264	339	309	1,770	1,845
IL	4,572	4,430	4,788	4,650	2,214	2,387
IN	23,521	22,995	24,219	23,712	2,279	2,324
IA	52,819	53,688	53,753	54,558	2,275	2,256
ME	3,538	3,529	3,622	3,602	2,126	2,388
MD	2,055	2,215	2,199	2,323	2,092	2,282
MI	9,437	10,067	9,601	10,225	2,458	2,367
MN	9,621	9,811	10,127	10,295	2,311	2,351
MS	1,509	1,450	5,967	6,162	2,028	1,980
MO	5,889	5,749	7,184	7,053	2,325	2,311
NE	9,623	9,473	9,673	9,523	2,409	2,426
NY	3,824	3,715	4,047	3,941	2,471	2,487
NC	5,461	6,067	12,638	13,183	2,089	2,101
OH	27,102	26,554	27,527	27,045	2,300	2,292
OR	2,341	1,952	2,479	2,074	2,622	2,555
PA	21,104	22,480	22,208	23,589	2,432	2,471
SC	3,169	3,221	4,486	4,477	2,140	2,100
SD	2,455	2,346	2,495	2,386	2,365	2,473
TX	14,876	13,680	19,250	18,204	2,244	2,263
UT ²		3,313		3,343		2,273
VA	1,425	1,140	3,003	3,311	2,031	2,024
WA	5,932	6,259	6,047	6,374	2,398	2,306
WI	4,194	4,166	4,773	4,721	2,305	2,394
Oth Sts ³	15,145	11,196	23,476	19,370	2,177	2,189
US	280,006	277,383	341,400	339,009	2,249	2,268

¹ Revised.

² Included in Oth Sts in 2009.

³ Not published separately to avoid disclosing data for individual operations.

**Layers and Eggs: Layers on Hand and Eggs Produced by State
and United States, During February 2009-10**

State	Table Egg Layers in Flocks 30,000 and Above		All Layers		Eggs per 100 for All Layers	
	2009	2010	2009	2010	2009	2010
	<i>1,000</i>	<i>1,000</i>	<i>1,000</i>	<i>1,000</i>	<i>Number</i>	<i>Number</i>
AL	1,415	1,292	9,332	9,309	1,725	1,687
AR	3,495	3,117	12,863	12,241	1,765	1,789
CA	19,465	19,154	19,770	19,460	2,023	2,107
CO	3,409	3,053	3,890	3,571	2,288	2,240
CT	2,678	2,473	2,741	2,545	2,080	2,083
FL	9,627	9,369	9,948	9,664	1,960	2,080
GA	9,360	8,875	18,214	17,628	1,905	1,974
HI	307	267	334	312	1,557	1,699
IL	4,448	4,290	4,662	4,514	2,016	2,171
IN	23,655	23,074	24,399	23,822	2,029	2,091
IA	52,855	53,223	53,796	54,103	2,050	2,026
ME	3,584	3,546	3,667	3,601	1,909	2,194
MD	2,064	2,205	2,188	2,308	1,920	2,123
MI	9,446	10,158	9,610	10,325	2,216	2,150
MN	9,677	9,902	10,176	10,383	2,113	2,119
MS	1,450	1,475	5,967	6,101	1,877	1,819
MO	5,875	5,682	7,176	7,074	2,132	2,092
NE	9,623	9,329	9,673	9,379	2,161	2,186
NY	3,885	3,805	4,103	4,031	2,218	2,208
NC	5,279	6,043	12,454	13,274	1,951	1,876
OH	26,856	26,634	27,300	27,133	2,018	2,038
OR	2,339	2,054	2,486	2,171	2,333	2,165
PA	21,566	22,360	22,714	23,458	2,179	2,230
SC	3,098	3,130	4,389	4,394	1,982	1,912
SD	2,447	2,347	2,487	2,387	2,211	2,178
TX	14,800	13,379	19,412	17,980	2,025	2,041
UT ¹		3,347		3,377		1,954
VA	1,342	1,138	2,942	3,422	1,801	1,783
WA	6,014	6,385	6,129	6,500	2,105	2,031
WI	4,256	4,119	4,836	4,689	2,068	2,090
Oth Sts ²	14,904	11,237	23,410	19,541	1,969	1,955
US	279,219	276,462	341,068	338,697	2,024	2,038

¹ Included in Oth Sts in 2009.

² Not published separately to avoid disclosing data for individual operations.

**Egg Production: By Type, State, and United States,
January 2009-10**

State	Total Production ¹		Table Eggs ²		Hatching Eggs ²	
	2009	2010 ³	2009	2010 ³	2009	2010
	<i>Million Eggs</i>	<i>Million Eggs</i>	<i>Million Eggs</i>	<i>Million Eggs</i>	<i>Million Eggs</i>	<i>Million Eggs</i>
AL	180	175	32	27	148	148
AR	257	243	87	78	170	165
CA	447	448				
CO	99	90				
CT	64	60				
FL	230	227	225	222	5	5
GA	384	384	215	215	169	169
HI	6.0	5.7	6.0	5.7	0	0
IL	106	111	103	108	3	3
IN	552	551	539	538	13	13
IA	1,223	1,231	1,208	1,217	15	14
ME	77	86				
MD	46	53	44	52	2	1
MI	236	242				
MN	234	242	225	233	9	9
MS	121	122	37	35	84	87
MO	167	163				
NE	233	231	233	231	0	0
NY	100	98				
NC	264	277	134	144	130	133
OH	633	620				
OR	65	53	63	51	2	2
PA	540	583	520	562	20	21
SC	96	94	72	72	24	22
SD	59	59	59	59	0	0
TX	432	412				
UT ⁴		76		76		0
VA	61	67	32	27	29	40
WA	145	147				
WI	110	113				
Oth Sts ⁵	511	424	377	295	134	129
US ¹	7,678	7,688	6,603	6,606	1,075	1,082

¹ Totals may not add due to rounding.

² Data by type of flock not shown for some States to avoid disclosing individual operations, data included in US totals.

³ Revised.

⁴ Included in Oth Sts in 2009.

⁵ Not published separately to avoid disclosing data for individual operations.

**Egg Production: By Type, State, and United States,
February 2009-10**

State	Total Production ¹		Table Eggs ²		Hatching Eggs ²	
	2009	2010	2009	2010	2009	2010
	<i>Million Eggs</i>	<i>Million Eggs</i>	<i>Million Eggs</i>	<i>Million Eggs</i>	<i>Million Eggs</i>	<i>Million Eggs</i>
AL	161	157	28	24	133	133
AR	227	219	73	70	154	149
CA	400	410				
CO	89	80				
CT	57	53				
FL	195	201	190	197	5	4
GA	347	348	194	194	153	154
HI	5.2	5.3	5.2	5.3	0	0
IL	94	98	91	95	3	3
IN	495	498	483	485	12	13
IA	1,103	1,096	1,089	1,083	14	13
ME	70	79				
MD	42	49	41	48	1	1
MI	213	222				
MN	215	220	207	212	8	8
MS	112	111	33	32	79	79
MO	153	148				
NE	209	205	209	205	0	0
NY	91	89				
NC	243	249	123	130	120	119
OH	551	553				
OR	58	47	56	46	2	1
PA	495	523	476	504	19	19
SC	87	84	66	64	21	20
SD	55	52	55	52	0	0
TX	393	367				
UT ³		66		66		0
VA	53	61	27	23	26	38
WA	129	132				
WI	100	98				
Oth Sts ⁴	461	382	337	265	124	117
US ¹	6,903	6,902	5,917	5,919	985	983

¹ Totals may not add due to rounding.

² Data by type of flock not shown for some States to avoid disclosing individual operations, data included in US totals.

³ Included in Oth Sts in 2009.

⁴ Not published separately to avoid disclosing data for individual operations.

**Forced Molt: Percent of All Layers by Month,
United States, 2009-10**

Month	Percent Being Molted ¹		Percent with Molt Completed ¹	
	2009	2010	2009	2010
	<i>Percent</i>	<i>Percent</i>	<i>Percent</i>	<i>Percent</i>
Jan	3.3	2.7	21.3	20.6
Feb ²	3.4	3.6	21.6	20.1
Mar	3.4	3.2	21.5	21.0
Apr	2.1		21.8	
May	4.5		20.7	
Jun	3.4		21.4	
Jul	3.4		20.8	
Aug	2.7		21.4	
Sep	2.9		21.2	
Oct	3.5		21.1	
Nov	2.3		21.9	
Dec	1.8		22.2	

¹ As of first of month.

² Revised 2010 only.

**Forced Molt: Percent of All Layers by State
and United States, March 1, 2009-10**

State	Percent Being Molted ¹		Percent with Molt Completed ¹	
	2009	2010	2009	2010
	<i>Percent</i>	<i>Percent</i>	<i>Percent</i>	<i>Percent</i>
AL	0.0	2.0	7.0	6.5
AR	2.0	0.0	9.5	10.0
CA	5.5	4.0	29.5	30.0
CO	2.0	0.0	17.5	16.0
CT	8.0	3.5	12.0	5.5
FL	9.5	6.0	27.5	36.0
GA	2.5	1.5	13.0	15.5
HI	9.5	9.5	54.0	48.5
IL	9.5	2.0	29.5	23.0
IN	5.0	3.0	35.5	32.5
IA	5.5	5.0	33.0	33.0
ME	0.0	0.0	0.0	0.0
MD	4.0	0.0	20.5	17.0
MI	2.0	2.5	25.5	25.0
MN	2.0	3.0	26.0	24.0
MS	2.0	1.0	9.0	9.0
MO	3.0	3.5	8.0	22.0
NE	0.0	1.0	1.5	2.0
NY	1.0	2.0	6.5	9.5
NC	0.0	0.0	12.0	10.5
OH	1.0	5.5	21.0	14.5
OR	5.5	2.5	29.0	31.5
PA	2.0	3.0	12.5	12.5
SC	0.0	0.0	17.5	17.0
SD	2.5	6.5	38.0	20.0
TX	3.5	1.5	18.5	17.0
UT ²		5.0		37.0
VA	0.0	2.5	11.5	12.5
WA	11.5	12.0	27.0	31.0
WI	0.0	4.5	26.5	33.0
Oth Sts ³	2.8	2.5	22.1	16.8
US	3.4	3.2	21.5	21.0

¹ As of first of month.

² Included in Oth Sts in 2009.

³ Not published separately to avoid disclosing data for individual operations.

**Hatchery Production: Eggs in Incubators, Chicks Hatched,
and Placements by Type, United States, February-March 2009-10**

Item	2009	2010	2010 as % of 2009
	<i>1,000</i>	<i>1,000</i>	<i>Percent</i>
Egg-Type			
Eggs in Incubators on Mar 1	37,166	38,773	104
Chicks Hatched During Feb	36,861	40,120	109
Chicks Hatched Jan thru Feb	74,944	78,914	105
Pullets Hatched During Feb for Intended Placements in Hatchery Supply Flocks	256	296	116
7-18 Months Earlier ¹	2,968	3,296	111
Broiler-Type			
Eggs in Incubators on Mar 1	634,244	642,804	101
Chicks Hatched During Feb	700,913	699,776	100
Chicks Hatched Jan thru Feb	1,479,314	1,475,391	100
Pullets Hatched During Feb for Intended Placements in Hatchery Supply Flocks	7,215	7,360	102
7-15 Months Earlier ²	65,444	61,817	94

¹ 2010 includes pullet chicks hatched Aug 2008 through Jul 2009.

² 2010 includes pullet chicks hatched Nov 2008 through Jul 2009.

**Egg-Type Eggs in Incubators: By Region and United States,
March 1, 2009-10**

Region	2009	2010	2010 as % of 2009
	<i>1,000</i>	<i>1,000</i>	<i>Percent</i>
North Atlantic	5,705	5,130	90
E North Central	7,660	8,034	105
W North Central	8,701	7,601	87
South Atlantic	3,572	4,593	129
South Central	6,067	5,128	85
West	5,461	8,287	152
US	37,166	38,773	104

Egg-Type Chicks Hatched: By Month, United States, 2009-10

Month	By Months			Cumulative		
	2009	2010	2010 as % of 2009	2009	2010	2010 as % of 2009
	<i>1,000</i>	<i>1,000</i>	<i>Percent</i>	<i>1,000</i>	<i>1,000</i>	<i>Percent</i>
Jan	38,083	38,794	102	38,083	38,794	102
Feb	36,861	40,120	109	74,944	78,914	105
Mar	40,137			115,081		
Apr	40,621			155,702		
May	37,774			193,476		
Jun	43,453			236,929		
Jul	36,282			273,211		
Aug	37,160			310,371		
Sep	40,001			350,372		
Oct	37,406			387,778		
Nov	34,897			422,675		
Dec	39,655			462,330		

**Intended Placements: Egg-Type Pullet Chicks for Hatchery Supply
Flocks by Month and Total, United States, 2009-10**

Month	Pullet Chicks Hatched		2010 as % of 2009	Cumulative Potential Plcmts Relative to Current Supply Flocks 7-18 Months Earlier ¹	
	2009	2010		2009	2010
	<i>1,000</i>	<i>1,000</i>	<i>Percent</i>	<i>1,000</i>	<i>1,000</i>
Jan	240	227	95	2,907	3,198
Feb	256	296	116	2,968	3,296
Mar	277			2,969	3,308
Apr	307			2,879	3,318
May	275			2,968	3,322
Jun	321			3,004	3,295
Jul	342			2,958	3,405
Aug	291			3,000	3,392
Sep	220			2,985	3,432
Oct	277			3,017	
Nov	290			3,060	
Dec	309			3,108	
Total	3,405				

¹ For February 2010, includes breeder pullet chicks hatched Aug 2008 through Jul 2009. The 7-18 months represent the first laying cycle. Molting and additional laying cycles will increase the cumulative potential placements.

**Broiler-Type Eggs in Incubators: By Region
and United States, March 1, 2009-10**

Region	2009	2010	2010 as % of 2009
	<i>1,000</i>	<i>1,000</i>	<i>Percent</i>
North Atlantic	11,992	11,757	98
E North Central	11,727	12,032	103
W North Central	28,115	28,641	102
South Atlantic	234,642	235,619	100
South Central	324,297	331,445	102
West	23,471	23,310	99
US	634,244	642,804	101

**Broiler-Type Chicks Hatched: By State
and United States, February 2009-10**

State	During February			Jan-Feb		
	2009	2010	2010 as % of 2009	2009	2010	2010 as % of 2009
	<i>1,000</i>	<i>1,000</i>	<i>Percent</i>	<i>1,000</i>	<i>1,000</i>	<i>Percent</i>
AL	98,410	97,461	99	206,680	206,588	100
AR	82,637	79,360	96	173,309	168,762	97
DE	11,367	10,370	91	23,727	22,620	95
FL	3,398	4,542	134	7,269	9,189	126
GA	108,645	103,818	96	229,719	218,246	95
KY	24,556	25,618	104	52,493	54,724	104
LA	11,807	11,346	96	24,799	23,790	96
MD	28,190	28,612	101	60,743	61,535	101
MS	58,470	64,536	110	123,739	134,286	109
NC	62,893	61,531	98	132,642	130,428	98
OK	22,093	21,957	99	46,400	47,379	102
PA	12,915	11,347	88	27,166	25,322	93
SC	18,261	18,317	100	38,372	38,489	100
TX	51,287	51,373	100	108,544	107,927	99
VA	18,784	20,370	108	40,905	42,838	105
CA, MO, TN, & WV	63,121	62,359	99	135,292	130,773	97
19 Sts ¹	676,834	672,917	99	1,431,799	1,422,896	99
Oth Sts ²	24,079	26,859	112	47,515	52,495	110
US	700,913	699,776	100	1,479,314	1,475,391	100

¹ States in the weekly hatchery production estimating program.

² Not published separately to avoid disclosing data for individual operations.

Broiler-Type Chicks Hatched: By Month, United States, 2009-10

Month	By Months			Cumulative		
	2009	2010	2010 as % of 2009	2009	2010	2010 as % of 2009
	<i>1,000</i>	<i>1,000</i>	<i>Percent</i>	<i>1,000</i>	<i>1,000</i>	<i>Percent</i>
Jan	778,401	775,615	100	778,401	775,615	100
Feb	700,913	699,776	100	1,479,314	1,475,391	100
Mar	783,348			2,262,662		
Apr	755,862			3,018,524		
May	786,471			3,804,995		
Jun	770,970			4,575,965		
Jul	781,215			5,357,180		
Aug	777,996			6,135,176		
Sep	739,477			6,874,653		
Oct	728,909			7,603,562		
Nov	704,208			8,307,770		
Dec	778,372			9,086,142		

**Intended Placements: Broiler-Type Pullet Chicks for Hatchery
Supply Flocks by Month and Total, 2009-10**

Month	Pullet Chicks Hatched		2010 as % of 2009	Cumulative Potential Plcmts Relative to Current Supply Flocks 7-15 Months Earlier ¹	
	2009	2010		2009	2010
	<i>1,000</i>	<i>1,000</i>	<i>Percent</i>	<i>1,000</i>	<i>1,000</i>
US Place- ments					
Jan	7,142	7,219	101	65,952	62,645
Feb	7,215	7,360	102	65,444	61,817
Mar	6,773			65,535	61,919
Apr	6,158			65,173	62,449
May	7,552			65,203	62,171
Jun	7,157			64,693	62,218
Jul	6,214			64,183	62,072
Aug	7,128			64,206	63,133
Sep	7,110			63,204	62,941
Oct	6,864			62,823	
Nov	7,262			62,519	
Dec	6,627			62,374	
Annual Total	83,202				
Total Place- ments ²					
Jan	8,410	8,626	103		
Feb	8,524	8,972	105		
Mar	8,626				
Apr	7,664				
May	9,255				
Jun	8,830				
Jul	7,469				
Aug	8,813				
Sep	8,947				
Oct	8,288				
Nov	8,678				
Dec	8,400				
Annual Total	101,904				

¹ For Feb 2010, includes breeder pullet chicks hatched Nov 2008 through Jul 2009.

² U.S. production of intended placements worldwide.

Reliability of Chickens and Eggs Estimates

Survey Procedures: Primary data for the "**Chickens and Eggs**" report are from weekly and/or monthly questionnaires sent to producers. An attempt is made to collect information for layer and egg estimates from each known contractor and independent producer who has at least 30,000 table egg layers, flocks of hatchery supply layers, or pullet only operations with at least 500 pullets. Coverage for operations with less than 30,000 table egg layers are estimated each month based on data reported in December. Approximately 650 contractors, independent egg producers, and pullet only operations are contacted each month. All known hatcheries, approximately 300, are contacted for information on a weekly and/or monthly basis.

Estimating Procedures: Sound statistical methodology is employed to derive estimates from the reported data. All data are analyzed for unusual values. Data from each operation are compared to their own past operating profile and to trends from similar operations. Data for missing operations are estimated based on similar operations or historical data. NASS field offices prepare these estimates by using a combination of survey indications and historic trends. Individual State estimates are reviewed by the Agricultural Statistics Board for reasonableness. Individual hatchery data are summed to State, regional, and U.S. totals.

For chicken hatcheries, chicks hatched consist of all chicks of domesticated breeds including males and chicks destined for hatchery supply flocks and research purposes. Eggs set are eggs in incubators for the purpose of hatching. The relationship of egg-type chicks hatched to chicken inventory and poultry marketings are carefully monitored. The disposition of egg-type chicks hatched prior to placement into the laying flock can vary significantly, which can make comparisons to changes in layer inventory inconsistent over time. Broiler chicks placed are specifically placed on feed for meat production. Intended placement data reported by leading breeders include pullet chicks expected from eggs sold the preceding month. The breeders in this report account for a large percentage of replacement pullets for hatchery supply flocks. Production of replacement pullets by these breeders indicates the number of pullets available to hatchery supply layer flocks several months before the pullets will actually move into the laying flocks. "Hatchery Supply Flocks" include all generations of layers which could lay eggs to supply a hatchery. This includes the generations of parents, grandparents, great-grandparents, pedigree, etc. Also included are research flocks, vaccine flocks, and specific pathogen-free flocks. The broiler cumulative potential placements are a moving total of the intended placements 7-15 months earlier. The egg-type cumulative potential placements of 7-18 months earlier represent the first laying cycle. Molting and additional laying cycles will increase the cumulative potential placements of egg-type hatching flocks.

Revision Policy: The previous month's estimates are subject to revision if late reports or corrected data indicates a different level. Additionally, revisions after the monthly report will be made at the end of the marketing year and published in the annual reports of "**Chickens and Eggs Summary**" and "**Hatchery Production**".

Reliability: Estimates are based on a census of all known contractors and independent producers who have at least 30,000 table egg layers, flocks of hatchery supply layers, pullet only operations with at least 500 pullets, or operating hatcheries and therefore, have no sampling error. However, estimates are subject to errors such as omission, duplication, and mistakes in reporting, recording, and processing the data. While these errors cannot be measured directly, they are minimized through strict quality controls in the data collection process and a careful review of all reported data for consistency and reasonableness.

To assist in evaluating the reliability of the estimates in this report, the "Root Mean Square Error" is shown for selected items in the following table. The "Root Mean Square Error" is a statistical measure based on past performance and is computed using the differences between first and final estimates. The "Root Mean Square Error" for all layers over the past 24 months is 0.1 percent. This means that chances are 2 out of 3 that the final estimate will not be above or below the current estimate of 339 million layers by more than 0.1 percent. Chances are 9 out of 10 that the difference will not exceed 0.3 percent.

Reliability of Layer and Egg Estimates

Item	Root Mean Square Error	90 Percent Confidence Level		Difference Between First and Latest Estimates			Number of Months	
				Average	Smallest	Largest	First Above Latest	First Below Latest
All Layers	<i>Percent</i> 0.1	<i>Percent</i> 0.3	<i>1,000</i> 9	<i>1,000</i> 442	<i>1,000</i> 138	<i>1,000</i> 873	<i>Number</i> 12	<i>Number</i> 12
Eggs	0.2	0.3	<i>Million Eggs</i> 0	<i>Million Eggs</i> 11	<i>Million Eggs</i> 0	<i>Million Eggs</i> 23	11	12

Regional Listing

North Atlantic: CT, ME, MA, NH, NJ, NY, PA, RI, VT.

East North Central: IL, IN, MI, OH, WI.

West North Central: IA, KS, MN, MO, NE, ND, SD.

South Atlantic: DE, FL, GA, MD, NC, SC, VA, WV.

South Central: AL, AR, KY, LA, MS, OK, TN, TX.

West: AK, AZ, CA, CO, HI, ID, MT, NM, NV, OR, UT, WA, WY.

Terms and Definitions of Chickens and Eggs Estimates

All Layers includes both table egg and hatching egg flocks regardless of size.

Intended Placements are reported by leading breeders. Coverage may not be 100 percent. Includes expected pullet chicks from eggs sold during the preceding month at the rate of 125 pullet chicks per case of 30 dozen eggs.

Information Contacts

Listed below are the commodity specialists in the Livestock Branch of the National Agricultural Statistics Service to contact for additional information.

- Dan Kerestes, Chief, Livestock Branch(202) 720-3570
- Bruce Boess, Head, Poultry and Specialty Commodities Section.....(202) 720-4447
- Doug Bounds - Poultry Slaughter, Turkey Hatchery, Turkeys Raised (202) 690-3237
- David Colwell - Cold Storage(202) 720-8784
- Chris Hawthorn - Catfish Processing, Catfish Production, Trout Production,
 Census of Aquaculture, Egg Products, Mink(202) 720-0585
- Kim Linonis - Layers, Eggs(202) 690-8632
- Troy Marshall - Broiler Hatchery, Chicken Hatchery, Honey(202) 720-3244

ACCESS TO REPORTS!!

For your convenience, there are several ways to obtain NASS reports, data products, and services:

INTERNET ACCESS

All NASS reports are available free of charge. For free access, connect to the Internet and go to the NASS Home Page at: www.nass.usda.gov.

E-MAIL SUBSCRIPTION

All NASS reports are available by subscription free of charge direct to your e-mail address. Starting with the NASS Home Page at www.nass.usda.gov, under the right navigation, *Receive reports by Email*, click on **National** or **State**. Follow the instructions on the screen.

PRINTED REPORTS OR DATA PRODUCTS

CALL OUR TOLL-FREE ORDER DESK: 800-999-6779 (U.S. and Canada)
Other areas, please call 703-605-6220 FAX: 703-605-6880
(Visa, MasterCard, check, or money order acceptable for payment.)

ASSISTANCE

For **assistance** with general agricultural statistics or further information about NASS or its products or services, contact the **Agricultural Statistics Hotline** at **800-727-9540**, 7:30 a.m. to 4:00 p.m. ET, or e-mail: nass@nass.usda.gov.

The U.S. Department of Agriculture (USDA) prohibits discrimination in all its programs and activities on the basis of race, color, national origin, age, disability, and where applicable, sex, marital status, familial status, parental status, religion, sexual orientation, genetic information, political beliefs, reprisal, or because all or a part of an individual's income is derived from any public assistance program. (Not all prohibited bases apply to all programs.) Persons with disabilities who require alternative means for communication of program information (Braille, large print, audiotape, etc.) should contact USDA's TARGET Center at (202) 720-2600 (voice and TDD).

To file a complaint of discrimination, write to USDA, Director, Office of Civil Rights, 1400 Independence Avenue, S.W., Washington, D.C. 20250-9410, or call (800) 795-3272 (voice) or (202) 720-6382 (TDD). USDA is an equal opportunity provider and employer.