



Chickens and Eggs

ISSN: 1948-9064

Released July 22, 2011, by the National Agricultural Statistics Service (NASS), Agricultural Statistics Board, United States Department of Agriculture (USDA).

June Egg Production Up Slightly

United States egg production totaled 7.50 billion during June 2011, up slightly from last year. Production included 6.44 billion table eggs, and 1.07 billion hatching eggs, of which 999 million were broiler-type and 69 million were egg-type. The total number of layers during June 2011 averaged 336 million, down 1 percent from last year. June egg production per 100 layers was 2,230 eggs, up 1 percent from June 2010.

All layers in the United States on July 1, 2011 totaled 336 million, down 1 percent from last year. The 336 million layers consisted of 279 million layers producing table or market type eggs, 54.3 million layers producing broiler-type hatching eggs, and 2.83 million layers producing egg-type hatching eggs. Rate of lay per day on July 1, 2011, averaged 74.4 eggs per 100 layers, up 2 percent from July 1, 2010.

Egg-Type Chicks Hatched Down 7 Percent

Egg-type chicks hatched during June 2011 totaled 39.3 million, down 7 percent from June 2010. Eggs in incubators totaled 34.0 million on July 1, 2011, down 10 percent from a year ago.

Domestic placements of egg-type pullet chicks for future hatchery supply flocks by leading breeders totaled 302 thousand during June 2011, down 5 percent from June 2010.

Broiler-Type Chicks Hatched Down 2 Percent

Broiler-type chicks hatched during June 2011 totaled 768 million, down 2 percent from June 2010. Eggs in incubators totaled 622 million on July 1, 2011, down 5 percent from a year earlier.

Leading breeders placed 7.07 million broiler-type pullet chicks for future domestic hatchery supply flocks during June 2011, down 1 percent from June 2010.

This page intentionally left blank.

Contents

Average Number of All Layers on Hand During the Month – United States: 2010-2011.....	4
Egg Production During the Month by Type – United States: 2010-2011	4
Average Number of Layers During the Month – United States.....	5
All Egg Production During the Month – United States	5
Layers on Hand and Eggs Produced by Type and Forced Molt – United States: May-June 2010 and 2011	6
Layers on Hand and Eggs Produced by Type and Forced Molt – United States: June-July 2010 and 2011	7
Layers on Hand and Eggs Produced – States and United States: During May 2010 and 2011	8
Layers on Hand and Eggs Produced – States and United States: During June 2010 and 2011	9
Egg Production by Type – States and United States: May 2010 and 2011	10
Egg Production by Type – States and United States: June 2010 and 2011	11
Forced Molt as Percent of All Layers by Month – United States: 2010-2011	12
Forced Molt as Percent of All Layers – States and United States: July 1, 2010 and 2011	12
Hatchery Production – United States: 2010 and 2011	13
Egg-Type Eggs in Incubators – Regions and United States: July 1, 2010 and 2011	14
Egg-Type Chicks Hatched by Month – United States: 2010-2011	14
Intended Placements of Egg-Type Pullet Chicks for Hatchery Supply Flocks by Month – United States: 2010-2011	15
Broiler-Type Eggs in Incubators – Regions and United States: July 1, 2010 and 2011	15
Broiler-Type Chicks Hatched – States and United States: June 2010 and 2011.....	16
Broiler-Type Chicks Hatched by Month – United States: 2010-2011	16
Intended Placements of Broiler-Type Pullet Chicks for Hatchery Supply Flocks by Month and Total: 2010-2011	17
Statistical Methodology	18
Regional Listing.....	19
Terms and Definitions of Chickens and Eggs Estimates	19
Information Contacts	19

Average Number of All Layers on Hand During the Month – United States: 2010-2011

[Blank data cells indicate estimation period has not yet begun]

Month	2010		2011	
	(1,000 layers)		(1,000 layers)	
December ¹		340,936		342,661
January		340,596		341,701
February		340,486		339,338
March		342,098		340,461
April		341,318		340,688
May		339,344		337,919
June		339,750		336,386
July		339,929		
August		340,084		
September		338,739		
October		336,804		
November		339,447		

¹ December preceding year.

Egg Production During the Month by Type – United States: 2010-2011

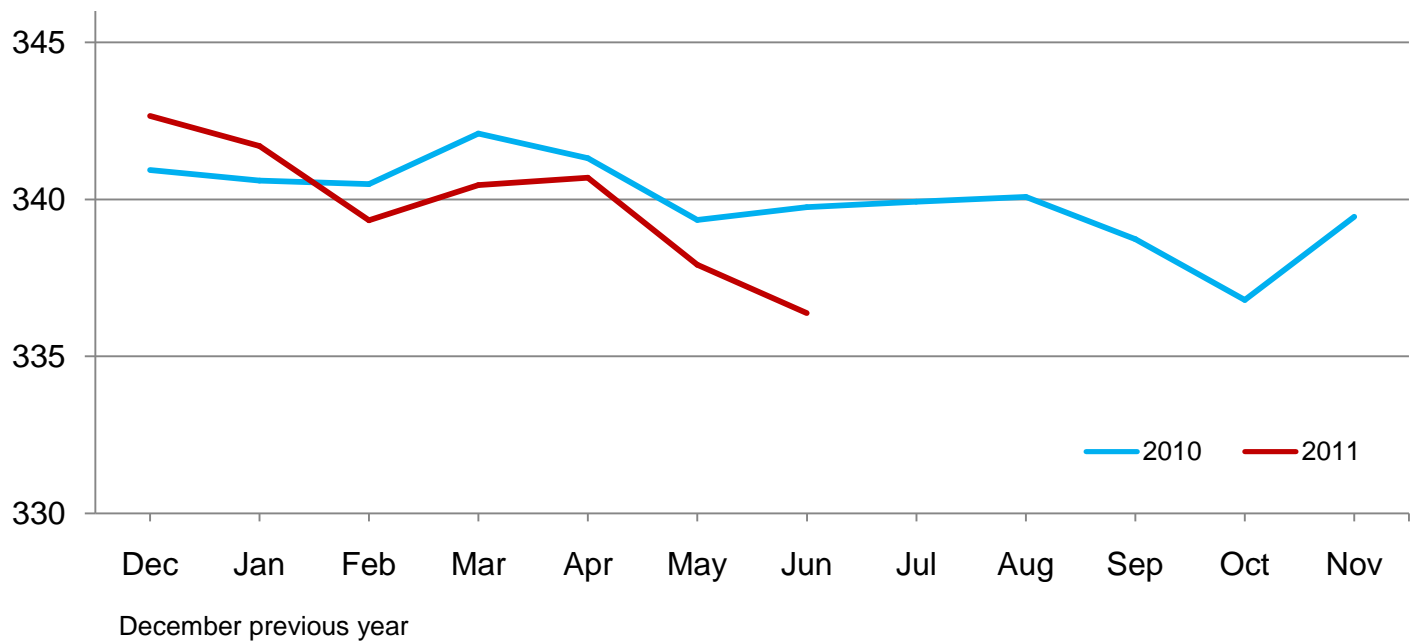
[Blank data cells indicate estimation period has not yet begun. Totals may not add due to rounding]

Month	Total eggs		Table eggs		Hatching eggs	
	2010	2011	2010	2011	2010	2011
	(million eggs)	(million eggs)	(million eggs)	(million eggs)	(million eggs)	(million eggs)
December ¹	7,853	7,920	6,779	6,850	1,074	1,070
January	7,724	7,821	6,637	6,739	1,087	1,083
February	6,935	7,006	5,950	6,029	985	976
March	7,839	7,836	6,740	6,754	1,098	1,083
April	7,578	7,617	6,503	6,555	1,075	1,062
May	7,716	7,777	6,607	6,671	1,109	1,107
June	7,484	7,502	6,415	6,435	1,069	1,068
July	7,719		6,610		1,109	
August	7,765		6,669		1,096	
September	7,514		6,464		1,050	
October	7,698		6,618		1,080	
November	7,573		6,538		1,036	
During year	91,398		78,530		12,868	

¹ December preceding year.

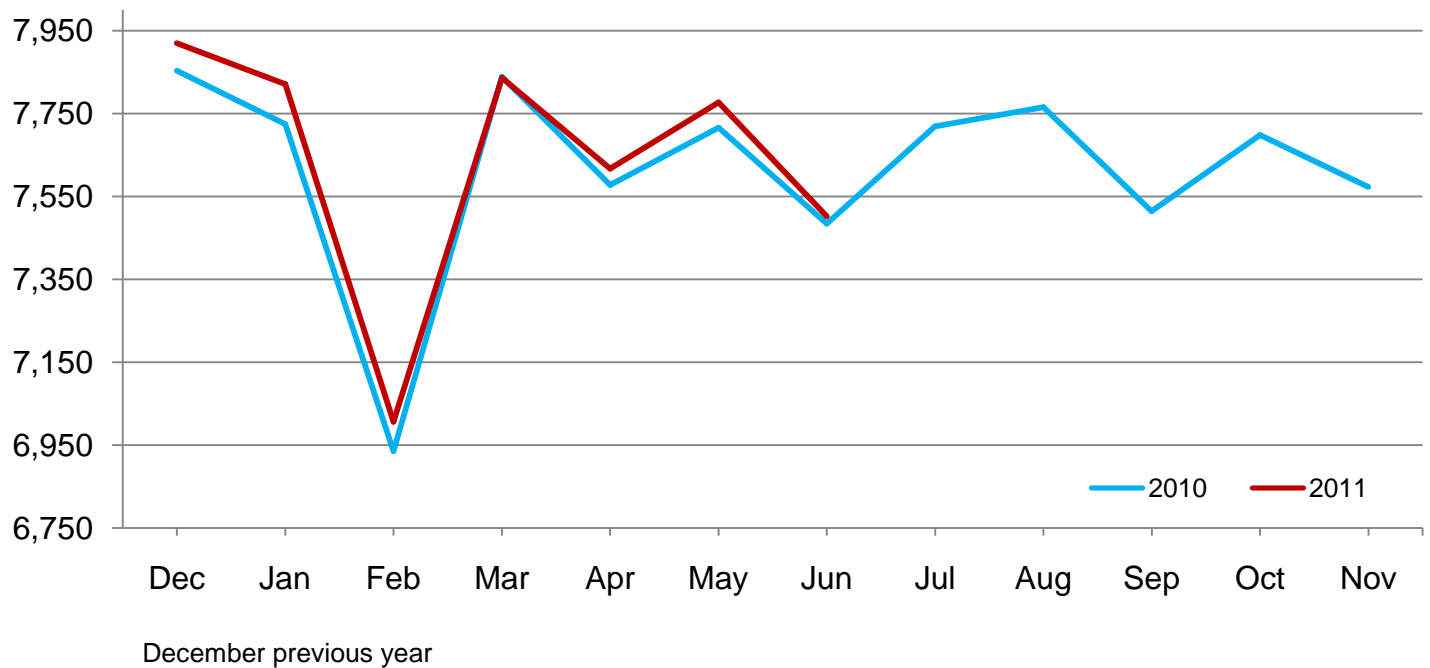
Average Layers During the Month – United States

Million layers



All Egg Production During the Month – United States

Million eggs



**Layers on Hand and Eggs Produced by Type and Forced Molt – United States:
May-June 2010 and 2011**

[Totals may not add due to rounding]

Item	2010	2011	2011 as percent of 2010
Layers during May			
All layers 1,000	339,344	337,919	100
Table egg type 1,000	280,676	279,869	100
Hatching egg type 1,000	58,668	58,050	99
Broiler-type hatching 1,000	55,705	55,075	99
Egg-type hatching 1,000	2,963	2,975	100
Eggs per 100 layers during May			
All layers number	2,274	2,301	101
Table egg type number	2,354	2,384	101
Hatching egg type number	1,890	1,907	101
Broiler-type hatching number	1,860	1,879	101
Egg-type hatching number	2,464	2,420	98
Eggs produced during May			
All layers million	7,716	7,777	101
Table egg type million	6,607	6,671	101
Hatching egg type million	1,109	1,107	100
Broiler-type hatching million	1,036	1,035	100
Egg-type hatching million	73	72	99
Layers on June 1			
All layers 1,000	339,018	336,327	99
Table egg type 1,000	280,857	278,486	99
Hatching egg type 1,000	58,161	57,841	99
Broiler-type hatching 1,000	55,237	54,827	99
Egg-type hatching 1,000	2,924	3,014	103
Eggs per 100 layers on June 1			
All layers number	73.4	74.0	101
Table egg type number	76.0	76.6	101
Hatching egg type number	60.8	61.6	101
Broiler-type hatching number	60.0	60.7	101
Egg-type hatching number	77.7	78.6	101
Forced molt layers on June 1			
Being molted percent	3.3	3.8	115
Molt completed percent	22.7	19.4	85
Layers sold for slaughter during May 1,000	12,619	14,882	118
Layers rendered, died, destroyed, composted or disappeared for any reason during May 1,000	7,781	9,089	117
Pullets on June 1 1,000	103,956	106,431	102
Pullets added during May ¹ 1,000	22,995	23,431	102

¹ Pullet chicks less than 3 days old added to pullet flocks.

Layers on Hand and Eggs Produced by Type and Forced Molt – United States: June-July 2010 and 2011

[Totals may not add due to rounding]

Item	2010	2011	2011 as percent of 2010
Layers during June			
All layers 1,000	339,750	336,386	99
Table egg type 1,000	281,425	278,880	99
Hatching egg type 1,000	58,325	57,506	99
Broiler-type hatching 1,000	55,397	54,583	99
Egg-type hatching 1,000	2,928	2,923	100
Eggs per 100 layers during June			
All layers number	2,203	2,230	101
Table egg type number	2,279	2,307	101
Hatching egg type number	1,833	1,857	101
Broiler-type hatching number	1,805	1,830	101
Egg-type hatching number	2,357	2,361	100
Eggs produced during June			
All layers million	7,484	7,502	100
Table egg type million	6,415	6,435	100
Hatching egg type million	1,069	1,068	100
Broiler-type hatching million	1,000	999	100
Egg-type hatching million	69	69	100
Layers on July 1			
All layers 1,000	340,442	336,414	99
Table egg type 1,000	281,976	279,259	99
Hatching egg type 1,000	58,466	57,155	98
Broiler-type hatching 1,000	55,542	54,330	98
Egg-type hatching 1,000	2,924	2,825	97
Eggs per 100 layers on July 1			
All layers number	73.3	74.4	102
Table egg type number	75.8	77.0	102
Hatching egg type number	61.1	61.6	101
Broiler-type hatching number	60.2	60.8	101
Egg-type hatching number	78.7	78.0	99
Forced molt layers on July 1			
Being molted percent	3.3	3.4	103
Molt completed percent	22.5	19.5	87
Layers sold for slaughter during June 1,000	14,007	13,364	95
Layers rendered, died, destroyed, composted or disappeared for any reason during June 1,000	7,923	8,174	103
Pullets on July 1 1,000	103,435	105,613	102
Pullets added during June ¹ 1,000	23,308	22,590	97

¹ Pullet chicks less than 3 days old added to pullet flocks.

Layers on Hand and Eggs Produced – States and United States: During May 2010 and 2011

State	Table egg layers in flocks 30,000 and above		All layers		Eggs per 100 for all layers	
	2010	2011	2010	2011	2010	2011
	(1,000 layers)	(1,000 layers)	(1,000 layers)	(1,000 layers)	(eggs)	(eggs)
Alabama	1,394	1,318	9,946	9,483	1,900	1,898
Arkansas	3,184	3,283	12,012	12,238	2,023	2,051
California	19,105	19,262	19,412	19,565	2,313	2,356
Colorado	3,124	3,493	3,636	3,943	2,448	2,435
Connecticut	2,442	2,191	2,513	2,261	2,427	2,433
Florida	8,744	9,143	9,088	9,508	2,223	2,293
Georgia	8,360	7,845	17,167	16,382	2,132	2,143
Hawaii ¹	279	(NA)	324	(NA)	1,883	(NA)
Illinois	4,391	4,168	4,607	4,393	2,279	2,322
Indiana	22,793	22,568	23,540	23,321	2,358	2,431
Iowa	53,544	52,095	54,429	52,921	2,324	2,320
Maine	3,548	3,493	3,603	3,548	2,470	2,424
Maryland	2,110	1,930	2,240	2,068	2,321	2,466
Michigan	9,967	10,188	10,132	10,352	2,398	2,463
Minnesota	9,804	9,737	10,276	10,226	2,326	2,337
Mississippi	1,398	1,474	6,247	6,129	2,017	2,039
Missouri	5,905	6,012	7,259	7,423	2,328	2,425
Nebraska	9,317	9,109	9,367	9,159	2,498	2,478
New York	3,674	3,858	3,891	4,086	2,467	2,496
North Carolina	6,069	5,884	13,635	13,734	2,010	2,119
Ohio	27,227	26,812	27,738	27,321	2,264	2,299
Oregon	2,406	2,103	2,555	2,257	2,427	2,481
Pennsylvania	22,553	23,858	23,660	25,078	2,494	2,476
South Carolina	2,881	3,103	4,160	4,446	2,139	2,249
South Dakota	2,333	2,394	2,373	2,434	2,276	2,383
Texas	13,385	13,284	17,928	17,669	2,248	2,258
Utah	3,386	3,378	3,416	3,408	2,283	2,406
Virginia	1,222	951	3,043	2,842	2,037	1,970
Washington	6,192	6,627	6,307	6,743	2,299	2,462
Wisconsin	4,070	4,016	4,667	4,592	2,421	2,199
Other States ²	11,377	11,782	20,173	20,389	2,181	2,183
United States	276,184	275,359	339,344	337,919	2,274	2,301

(NA) Not available.

¹ Included in Other States in 2011.

² Includes data for States not published in this table.

Layers on Hand and Eggs Produced – States and United States: During June 2010 and 2011

State	Table egg layers in flocks 30,000 and above		All layers		Eggs per 100 for all layers	
	2010	2011	2010	2011	2010	2011
	(1,000 layers)	(1,000 layers)	(1,000 layers)	(1,000 layers)	(eggs)	(eggs)
Alabama	1,379	1,279	9,843	9,327	1,859	1,855
Arkansas	3,229	3,516	12,060	12,281	1,940	2,028
California	19,180	19,252	19,488	19,553	2,268	2,250
Colorado	3,109	3,611	3,575	4,042	2,378	2,400
Connecticut	2,372	2,200	2,443	2,271	2,333	2,334
Florida	8,769	9,037	9,108	9,413	2,174	2,231
Georgia	8,196	7,713	16,963	16,128	2,093	2,071
Hawaii ¹	270	(NA)	315	(NA)	1,778	(NA)
Illinois	4,327	4,119	4,540	4,339	2,181	2,374
Indiana	22,903	22,446	23,616	23,147	2,295	2,346
Iowa	53,663	51,866	54,530	52,714	2,232	2,254
Maine	3,513	3,397	3,568	3,452	2,382	2,346
Maryland	2,152	1,807	2,290	1,942	2,358	2,369
Michigan	9,965	10,133	10,121	10,287	2,213	2,352
Minnesota	9,880	9,637	10,364	10,133	2,277	2,280
Mississippi	1,476	1,466	6,372	6,119	1,962	1,994
Missouri	5,870	5,777	7,220	7,185	2,244	2,338
Nebraska	9,370	9,094	9,420	9,144	2,431	2,373
New York	3,854	3,985	4,067	4,218	2,385	2,418
North Carolina	6,095	5,783	13,612	13,736	1,962	2,038
Ohio	27,482	27,000	27,984	27,479	2,166	2,227
Oregon	2,425	2,189	2,576	2,332	2,290	2,273
Pennsylvania	22,822	23,398	23,928	24,613	2,432	2,434
South Carolina	2,819	3,181	4,087	4,529	2,080	2,142
South Dakota	2,330	2,349	2,370	2,389	2,321	2,428
Texas	13,451	13,251	17,914	17,531	2,144	2,202
Utah	3,322	3,403	3,352	3,433	2,387	2,272
Virginia	1,238	967	3,079	2,874	1,949	1,914
Washington	6,262	6,630	6,377	6,745	2,258	2,328
Wisconsin	3,869	4,111	4,466	4,682	2,373	2,093
Other States ²	11,341	11,773	20,102	20,348	2,119	2,113
United States	276,933	274,370	339,750	336,386	2,203	2,230

(NA) Not available.

¹ Included in Other States in 2011.

² Includes data for States not published in this table.

Egg Production by Type – States and United States: May 2010 and 2011

[Totals may not add due to rounding. Data by type of flock not shown for some States to avoid disclosing individual operations, data included in United States totals]

State	Total production		Table eggs		Hatching eggs	
	2010	2011	2010	2011	2010	2011
	(million eggs)	(million eggs)	(million eggs)	(million eggs)	(million eggs)	(million eggs)
Alabama	189	180	34	31	155	149
Arkansas	243	251	74	81	169	170
California	449	461	(D)	(D)	(D)	(D)
Colorado	89	96	(D)	(D)	(D)	(D)
Connecticut	61	55	(D)	(D)	(D)	(D)
Florida	202	218	197	212	5	6
Georgia	366	351	193	186	173	165
Hawaii ¹	6.1	(NA)	6.1	(NA)	-	(NA)
Illinois	105	102	102	99	3	3
Indiana	555	567	541	553	14	14
Iowa	1,265	1,228	1,251	1,215	14	13
Maine	89	86	(D)	(D)	(D)	(D)
Maryland	52	51	50	49	2	2
Michigan	243	255	(D)	(D)	(D)	(D)
Minnesota	239	239	231	231	8	8
Mississippi	126	125	34	36	92	89
Missouri	169	180	(D)	(D)	(D)	(D)
Nebraska	234	227	234	227	-	-
New York	96	102	(D)	(D)	(D)	(D)
North Carolina	274	291	141	146	133	145
Ohio	628	628	(D)	(D)	(D)	(D)
Oregon	62	56	60	54	2	2
Pennsylvania	590	621	571	599	19	22
South Carolina	89	100	67	76	22	24
South Dakota	54	58	54	58	-	-
Texas	403	399	(D)	(D)	(D)	(D)
Utah	78	82	78	82	-	-
Virginia	62	56	28	21	34	35
Washington	145	166	(D)	(D)	(D)	(D)
Wisconsin	113	101	(D)	(D)	(D)	(D)
Other States ²	440	445	301	311	139	135
United States	7,716	7,777	6,607	6,671	1,109	1,107

- Represents zero.

(D) Withheld to avoid disclosing data for individual operations.

(NA) Not available.

¹ Included in Other States in 2011.

² Includes data for States not published in this table.

Egg Production by Type – States and United States: June 2010 and 2011

[Totals may not add due to rounding. Data by type of flock not shown for some States to avoid disclosing individual operations, data included in United States totals]

State	Total production		Table eggs		Hatching eggs	
	2010	2011	2010	2011	2010	2011
	(million eggs)	(million eggs)	(million eggs)	(million eggs)	(million eggs)	(million eggs)
Alabama	183	173	32	31	151	142
Arkansas	234	249	73	83	161	166
California	442	440	(D)	(D)	(D)	(D)
Colorado	85	97	(D)	(D)	(D)	(D)
Connecticut	57	53	(D)	(D)	(D)	(D)
Florida	198	210	194	204	4	6
Georgia	355	334	186	176	169	158
Hawaii ¹	5.6	(NA)	5.6	(NA)	-	(NA)
Illinois	99	103	96	100	3	3
Indiana	542	543	530	531	12	12
Iowa	1,217	1,188	1,204	1,175	13	13
Maine	85	81	(D)	(D)	(D)	(D)
Maryland	54	46	52	44	2	2
Michigan	224	242	(D)	(D)	(D)	(D)
Minnesota	236	231	228	223	8	8
Mississippi	125	122	36	36	89	86
Missouri	162	168	(D)	(D)	(D)	(D)
Nebraska	229	217	229	217	-	-
New York	97	102	(D)	(D)	(D)	(D)
North Carolina	267	280	140	140	127	140
Ohio	606	612	(D)	(D)	(D)	(D)
Oregon	59	53	57	51	2	2
Pennsylvania	582	599	563	578	19	21
South Carolina	85	97	63	74	22	23
South Dakota	55	58	55	58	-	-
Texas	384	386	(D)	(D)	(D)	(D)
Utah	80	78	80	78	-	-
Virginia	60	55	27	20	33	35
Washington	144	157	(D)	(D)	(D)	(D)
Wisconsin	106	98	(D)	(D)	(D)	(D)
Other States ²	426	430	292	299	134	132
United States	7,484	7,502	6,415	6,435	1,069	1,068

- Represents zero.

(D) Withheld to avoid disclosing data for individual operations.

(NA) Not available.

¹ Included in Other States in 2011.

² Includes data for States not published in this table.

Forced Molt as Percent of All Layers by Month – United States: 2010-2011

[As of the first of the month. Blank data cells indicate estimation period has not yet begun]

Month	Being molted		Molt completed	
	2010 (percent)	2011 (percent)	2010 (percent)	2011 (percent)
January	2.7	2.8	20.8	21.3
February	3.6	3.6	20.3	20.3
March	3.2	3.1	21.2	20.2
April	2.8	2.6	21.3	20.0
May	4.2	3.0	21.5	20.0
June	3.3	3.8	22.7	19.4
July	3.3	3.4	22.5	19.5
August	3.4		22.6	
September	2.6		23.0	
October	4.4		21.7	
November	2.7		22.5	
December	1.8		22.5	

Forced Molt as Percent of All Layers – States and United States: July 1, 2010 and 2011

[As of the first of the month]

State	Being molted		Molt completed	
	2010 (percent)	2011 (percent)	2010 (percent)	2011 (percent)
Alabama	0.5	-	8.0	8.5
Arkansas	2.0	1.5	10.5	8.5
California	6.0	6.5	31.0	28.0
Colorado	7.5	5.0	17.0	11.0
Connecticut	-	-	15.0	16.5
Florida	6.5	5.5	37.0	34.0
Georgia	0.5	3.0	19.0	18.0
Hawaii ¹	9.0	(NA)	48.5	(NA)
Illinois	4.5	-	23.0	29.0
Indiana	2.0	2.5	30.0	22.5
Iowa	4.0	5.5	39.0	34.5
Maine	-	-	-	-
Maryland	4.5	2.5	13.0	19.5
Michigan	5.0	1.5	20.5	13.0
Minnesota	4.5	4.5	21.5	21.0
Mississippi	1.0	1.0	8.5	11.0
Missouri	1.5	1.5	21.0	18.0
Nebraska	-	-	1.0	3.0
New York	1.5	3.0	10.0	5.5
North Carolina	-	0.5	14.0	14.0
Ohio	5.0	3.5	20.5	14.0
Oregon	8.5	12.0	24.0	28.0
Pennsylvania	2.5	2.0	12.0	8.0
South Carolina	-	2.5	17.0	16.0
South Dakota	6.5	6.5	30.5	21.0
Texas	4.5	3.5	17.0	20.0
Utah	1.5	8.0	43.0	34.5
Virginia	4.0	5.5	13.0	2.5
Washington	8.0	6.0	28.5	27.5
Wisconsin	5.5	5.5	32.5	26.0
Other States ²	2.6	2.7	17.7	14.4
United States	3.3	3.4	22.5	19.5

- Represents zero.

(NA) Not available.

¹ Included in Other States in 2011.

² Includes data for States not published in this table.

Hatchery Production – United States: 2010 and 2011

Item	2010	2011	2011 as percent of 2010
	(1,000)	(1,000)	(percent)
Egg-type			
Eggs in incubators on July 1	37,607	34,016	90
Chicks hatched during June	42,331	39,313	93
Chicks hatched January through June	256,071	248,723	97
Pullets hatched during June for intended placements:			
Hatchery supply flocks	318	302	95
Cumulative potential placements 7-18 months earlier ¹	3,295	3,027	92
Broiler-type			
Eggs in incubators on July 1	653,290	622,086	95
Chicks hatched during June	787,703	768,173	98
Chicks hatched January through June	4,618,487	4,638,410	100
Pullets hatched during June for intended placements:			
Hatchery supply flocks	7,128	7,066	99
Cumulative potential placements 7-15 months earlier ²	62,049	64,558	104

¹ 2011 includes pullet chicks hatched December 2009 through November 2010.

² 2011 includes pullet chicks hatched March 2010 through November 2010.

Egg-Type Eggs in Incubators – Regions and United States: July 1, 2010 and 2011

[See regional listing on page 19]

Region	2010	2011	2011 as percent of 2010
	(1,000 eggs)	(1,000 eggs)	(percent)
North Atlantic	5,449	4,055	74
East North Central	7,560	5,936	79
West North Central	8,780	8,890	101
South Atlantic	4,622	3,963	86
South Central	3,557	3,850	108
West	7,639	7,322	96
United States	37,607	34,016	90

Egg-Type Chicks Hatched by Month – United States: 2010-2011

[Blank data cells indicate estimation period has not yet begun]

Month	By months			Cumulative		
	2010	2011	2011 as percent of 2010	2010	2011	2011 as percent of 2010
	(1,000 chicks)	(1,000 chicks)	(percent)	(1,000 chicks)	(1,000 chicks)	(percent)
January	38,819	41,366	107	38,819	41,366	107
February	39,218	37,336	95	78,037	78,702	101
March	44,914	43,974	98	122,951	122,676	100
April	47,558	43,429	91	170,509	166,105	97
May	43,231	43,305	100	213,740	209,410	98
June	42,331	39,313	93	256,071	248,723	97
July	38,089			294,160		
August	37,014			331,174		
September	40,130			371,304		
October	41,300			412,604		
November	38,849			451,453		
December	37,759			489,212		

Intended Placements of Egg-Type Pullet Chicks for Hatchery Supply Flocks by Month – United States: 2010-2011

[Blank data cells indicate estimation period has not yet begun]

Month	Pullet chicks hatched		2011 as percent of 2010	Cumulative potential placements relative to current supply flocks 7-18 months earlier ¹	
	2010	2011		2011	2012
	(1,000 chicks)	(1,000 chicks)	(percent)	(1,000 chicks)	(1,000 chicks)
January	227	220	97	3,292	2,920
February	296	244	82	3,168	
March	260	253	97	3,130	
April	232	287	124	3,161	
May	230	196	85	3,054	
June	318	302	95	3,027	
July	218			2,981	
August	253			2,974	
September	251			2,922	
October	170			2,915	
November	263			2,970	
December	263			2,936	
Total	2,981				

¹ For June 2011, includes breeder pullet chicks hatched December 2009 through November 2010. The 7-18 months represent the first laying cycle. Molting and additional laying cycles will increase the cumulative potential placements.

Broiler-Type Eggs in Incubators – Regions and United States: July 1, 2010 and 2011

[See regional listing on page 19]

Region	2010	2011	2011 as percent of 2010
	(1,000 eggs)	(1,000 eggs)	(percent)
North Atlantic	12,941	13,023	101
East North Central	12,731	12,847	101
West North Central	29,375	27,563	94
South Atlantic	239,533	232,859	97
South Central	334,571	311,735	93
West	24,139	24,059	100
United States	653,290	622,086	95

Broiler-Type Chicks Hatched – States and United States: June 2010 and 2011

State	During June			January-June		
	2010	2011	2011 as percent of 2010	2010	2011	2011 as percent of 2010
	(1,000 chicks)	(1,000 chicks)	(percent)	(1,000 chicks)	(1,000 chicks)	(percent)
Alabama	111,322	106,454	96	648,955	650,539	100
Arkansas	88,806	84,509	95	522,695	512,118	98
Delaware	13,826	11,620	84	76,446	83,029	109
Florida	4,863	4,814	99	28,569	28,614	100
Georgia	116,254	120,360	104	680,700	718,921	106
Kentucky	28,223	28,979	103	169,613	166,395	98
Louisiana	12,596	11,964	95	74,653	73,276	98
Maryland	28,962	27,721	96	185,813	165,519	89
Mississippi	71,093	70,154	99	419,829	418,738	100
North Carolina	71,843	72,419	101	410,374	432,722	105
Oklahoma	25,257	24,848	98	150,779	150,950	100
Pennsylvania	13,532	14,405	106	79,338	83,726	106
South Carolina	20,472	18,859	92	120,592	114,797	95
Texas	58,030	53,717	93	338,228	331,003	98
Virginia	23,297	22,707	97	137,358	135,042	98
California, Missouri, Tennessee, and West Virginia	73,390	68,567	93	419,819	418,288	100
19 States ¹	761,766	742,097	97	4,463,761	4,483,677	100
Other States ²	25,937	26,076	101	154,726	154,733	100
United States	787,703	768,173	98	4,618,487	4,638,410	100

¹ States in the weekly hatchery production estimating program.

² Not published separately to avoid disclosing data for individual operations.

Broiler-Type Chicks Hatched by Month – United States: 2010-2011

[Blank data cells indicate estimation period has not yet begun]

Month	By months			Cumulative		
	2010	2011	2011 as percent of 2010	2010	2011	2011 as percent of 2010
	(1,000 chicks)	(1,000 chicks)	(percent)	(1,000 chicks)	(1,000 chicks)	(percent)
January	775,431	781,123	101	775,431	781,123	101
February	700,050	708,724	101	1,475,481	1,489,847	101
March	787,939	793,957	101	2,263,420	2,283,804	101
April	768,296	779,859	102	3,031,716	3,063,663	101
May	799,068	806,574	101	3,830,784	3,870,237	101
June	787,703	768,173	98	4,618,487	4,638,410	100
July	801,716			5,420,203		
August	798,751			6,218,954		
September	762,494			6,981,448		
October	768,094			7,749,542		
November	741,093			8,490,635		
December	786,440			9,277,075		

Intended Placements of Broiler-Type Pullet Chicks for Hatchery Supply Flocks by Month and Total: 2010-2011

[Blank data cells indicate estimation period has not yet begun]

Month	Pullet chicks hatched		2011 as percent of 2010	Cumulative potential placements relative to current supply flocks 7-15 months earlier ¹	
	2010 (1,000 chicks)	2011 (1,000 chicks)		2011 (1,000 chicks)	2012 (1,000 chicks)
United States placements					
January	6,637	6,989	105	62,996	64,221
February	7,021	7,107	101	63,283	
March	6,673	7,058	106	63,250	
April	6,825	7,044	103	63,751	
May	8,351	7,721	92	63,990	
June	7,128	7,066	99	64,558	
July	6,675			64,656	
August	7,313			64,820	
September	7,128			63,576	
October	6,876			63,506	
November	7,589			63,875	
December	6,771			64,283	
Annual total	84,987				
Total placements ²					
January	8,626	8,548	99		
February	9,151	8,782	96		
March	9,033	9,023	100		
April	8,210	8,944	109		
May	10,338	9,612	93		
June	9,055	8,995	99		
July	8,520				
August	9,009				
September	9,087				
October	8,553				
November	9,314				
December	8,596				
Annual total	107,492				

¹ For June 2011, includes breeder pullet chicks hatched March 2010 through November 2010.

² United States production of intended placements worldwide.

Statistical Methodology

Survey Procedures: Primary data for the *Chickens and Eggs* report are from weekly and/or monthly questionnaires sent to producers. An attempt is made to collect information for layer and egg estimates from each known contractor and independent producer who has at least 30,000 table egg layers, flocks of hatchery supply layers, or pullet only operations with at least 500 pullets. Coverage for operations with less than 30,000 table egg layers are estimated each month based on data reported in December. Approximately 650 contractors, independent egg producers, and pullet only operations are contacted each month. All known hatcheries, approximately 300, are contacted for information on a weekly and/or monthly basis.

Estimating Procedures: Sound statistical methodology is employed to derive estimates from the reported data. All data are analyzed for unusual values. Data from each operation are compared to their own past operating profile and to trends from similar operations. Data for missing operations are estimated based on similar operations or historical data. NASS field offices prepare these estimates by using a combination of survey indications and historic trends. Individual State estimates are reviewed by the Agricultural Statistics Board for reasonableness. Individual hatchery data are summed to State, regional, and United States totals.

For chicken hatcheries, chicks hatched consist of all chicks of domesticated breeds including males and chicks destined for hatchery supply flocks and research purposes. Eggs set are eggs in incubators for the purpose of hatching. The relationship of egg-type chicks hatched to chicken inventory and poultry marketings are carefully monitored. The disposition of egg-type chicks hatched prior to placement into the laying flock can vary significantly, which can make comparisons to changes in layer inventory inconsistent over time. Broiler chicks placed are specifically placed on feed for meat production. Intended placement data reported by leading breeders include pullet chicks expected from eggs sold the preceding month. The breeders in this report account for a large percentage of replacement pullets for hatchery supply flocks. Production of replacement pullets by these breeders indicates the number of pullets available to hatchery supply layer flocks several months before the pullets will actually move into the laying flocks. "Hatchery Supply Flocks" include all generations of layers which could lay eggs to supply a hatchery. This includes the generations of parents, grandparents, great-grandparents, pedigree, etc. Also included are research flocks, vaccine flocks, and specific pathogen-free flocks. The broiler cumulative potential placements are a moving total of the intended placements 7-15 months earlier. The egg-type cumulative potential placements of 7-18 months earlier represent the first laying cycle. Molting and additional laying cycles will increase the cumulative potential placements of egg-type hatching flocks.

Revision Policy: The previous month's estimates are subject to revision if late reports or corrected data indicates a different level. Additionally, revisions after the monthly report will be made at the end of the marketing year and published in the annual reports of *Chickens and Eggs Summary* and *Hatchery Production Summary*. Estimates will also be reviewed for chickens and eggs after data from the 5-year Census of Agriculture are available. No revisions will be made after that date.

Reliability: Estimates are based on a census of all known contractors and independent producers who have at least 30,000 table egg layers, flocks of hatchery supply layers, pullet only operations with at least 500 pullets, or operating hatcheries and therefore, have no sampling error. However, estimates are subject to errors such as omission, duplication, and mistakes in reporting, recording, and processing the data. While these errors cannot be measured directly, they are minimized through strict quality controls in the data collection process and a careful review of all reported data for consistency and reasonableness.

To assist in evaluating the reliability of the estimates in this report, the "Root Mean Square Error" is shown for selected items in the following table. The "Root Mean Square Error" is a statistical measure based on past performance and is computed using the differences between first and final estimates. The "Root Mean Square Error" for all layers over the past 24 months is 0.3 percent. This means that chances are 2 out of 3 that the final estimate will not be above or below the current estimate of 336 million layers by more than 0.3 percent. Chances are 9 out of 10 that the difference will not exceed 0.6 percent.

Reliability of Layer and Egg Estimates

[Based on data for the past twenty-four months]

Item	Root mean square error	90 percent confidence level	Difference between first and latest estimate				
			Average	Smallest	Largest	Months	
						Below latest	Above latest
All layers	(percent) 0.3	(percent) 0.6	(1,000) 1,022	(1,000) 26	(1,000) 2,021	(number) 22	(number) 2
Eggs	0.3	0.6	(million) 22	(million) 1	(million) 45	22	2

Regional Listing

- North Atlantic:** Connecticut, Maine, Massachusetts, New Hampshire, New Jersey, New York, Pennsylvania, Rhode Island, Vermont.
- East North Central:** Illinois, Indiana, Michigan, Ohio, Wisconsin.
- West North Central:** Iowa, Kansas, Minnesota, Missouri, Nebraska, North Dakota, South Dakota.
- South Atlantic:** Delaware, Florida, Georgia, Maryland, North Carolina, South Carolina, Virginia, West Virginia.
- South Central:** Alabama, Arkansas, Kentucky, Louisiana, Mississippi, Oklahoma, Tennessee, Texas.
- West:** Alaska, Arizona, California, Colorado, Hawaii, Idaho, Montana, New Mexico, Nevada, Oregon, Utah, Washington, Wyoming.

Terms and Definitions of Chickens and Eggs Estimates

All Layers includes both table egg and hatching egg flocks regardless of size.

Intended Placements are reported by leading breeders. Coverage may not be 100 percent. Includes expected pullet chicks from eggs sold during the preceding month at the rate of 125 pullet chicks per case of 30 dozen eggs.

Information Contacts

Listed below are the commodity specialists in the Livestock Branch of the National Agricultural Statistics Service to contact for additional information. E-mail inquiries may be sent to nass@nass.usda.gov

- Dan Kerestes, Chief, Livestock Branch (202) 720-3570
- Bruce Boess, Head, Poultry and Specialty Commodities Section (202) 720-4447
- Cody Brokmeyer – Poultry Slaughter, Turkey Hatchery, Turkeys Raised (202) 690-3237
- David Colwell – Cold Storage (202) 720-8784
- Kim Linonis – Layers, Eggs (202) 690-8632
- Troy Marshall – Broiler Hatchery, Chicken Hatchery, Honey (202) 720-3244
- Miste Salmon – Catfish Processing, Catfish Production, Trout Production,
 Census of Aquaculture, Egg Products, Mink (202) 720-0585

Access to NASS Reports

For your convenience, you may access NASS reports and products the following ways:

- All reports are available electronically, at no cost, on the NASS web site: <http://www.nass.usda.gov>
- Both national and state specific reports are available via a free e-mail subscription. To set-up this free subscription, visit <http://www.nass.usda.gov> and in the “Receive NASS Updates” box under “Receive reports by Email,” click on “National” or “State” to select the reports you would like to receive.
- Printed reports may be purchased from the National Technical Information Service (NTIS) by calling toll-free (800) 999-6779, or (703) 605-6220 if calling from outside the United States or Canada. Accepted methods of payment are Visa, MasterCard, check, or money order.

For more information on NASS surveys and reports, call the NASS Agricultural Statistics Hotline at (800) 727-9540, 7:30 a.m. to 4:00 p.m. ET, or e-mail: nass@nass.usda.gov.

The United States Department of Agriculture (USDA) prohibits discrimination in all its programs and activities on the basis of race, color, national origin, age, disability, and where applicable, sex, marital status, familial status, parental status, religion, sexual orientation, political beliefs, genetic information, reprisal, or because all or a part of an individual's income is derived from any public assistance program. (Not all prohibited bases apply to all programs.) Persons with disabilities who require alternative means for communication of program information (Braille, large print, audiotape, etc.) should contact USDA's TARGET Center at (202) 720-2600 (voice and TDD).

To file a complaint of discrimination, write to USDA, Assistant Secretary for Civil Rights, Office of the Assistant Secretary for Civil Rights, 1400 Independence Avenue, S.W., Stop 9410, Washington, DC 20250-9410, or call toll-free at (866) 632-9992 (English) or (800) 877-8339 (TDD) or (866) 377-8642 (English Federal-relay) or (800) 845-6136 (Spanish Federal-relay). USDA is an equal opportunity provider and employer.