



Chickens and Eggs

ISSN: 1948-9064

Released August 22, 2011, by the National Agricultural Statistics Service (NASS), Agricultural Statistics Board, United States Department of Agriculture (USDA).

July Egg Production Up Slightly

United States egg production totaled 7.74 billion during July 2011, up slightly from last year. Production included 6.65 billion table eggs, and 1.09 billion hatching eggs, of which 1.02 billion were broiler-type and 68 million were egg-type. The total number of layers during July 2011 averaged 336 million, down 1 percent from last year. July egg production per 100 layers was 2,304 eggs, up 1 percent from July 2010.

All layers in the United States on August 1, 2011 totaled 335 million, down 1 percent from last year. The 335 million layers consisted of 279 million layers producing table or market type eggs, 52.9 million layers producing broiler-type hatching eggs, and 2.86 million layers producing egg-type hatching eggs. Rate of lay per day on August 1, 2011, averaged 74.2 eggs per 100 layers, up 1 percent from August 1, 2010.

Egg-Type Chicks Hatched Down 2 Percent

Egg-type chicks hatched during July 2011 totaled 37.4 million, down 2 percent from July 2010. Eggs in incubators totaled 37.1 million on August 1, 2011, up 11 percent from a year ago.

Domestic placements of egg-type pullet chicks for future hatchery supply flocks by leading breeders totaled 232 thousand during July 2011, up 6 percent from July 2010.

Broiler-Type Chicks Hatched Down 4 Percent

Broiler-type chicks hatched during July 2011 totaled 770 million, down 4 percent from July 2010. Eggs in incubators totaled 610 million on August 1, 2011, down 6 percent from a year earlier.

Leading breeders placed 6.44 million broiler-type pullet chicks for future domestic hatchery supply flocks during July 2011, down 3 percent from July 2010.

This page intentionally left blank.

Contents

Average Number of All Layers on Hand During the Month – United States: 2010-2011.....	4
Egg Production During the Month by Type – United States: 2010-2011	4
Average Number of Layers During the Month – United States.....	5
All Egg Production During the Month – United States	5
Layers on Hand and Eggs Produced by Type and Forced Molt – United States: June-July 2010 and 2011	6
Layers on Hand and Eggs Produced by Type and Forced Molt – United States: July-August 2010 and 2011	7
Layers on Hand and Eggs Produced – States and United States: During June 2010 and 2011	8
Layers on Hand and Eggs Produced – States and United States: During July 2010 and 2011	9
Egg Production by Type – States and United States: June 2010 and 2011	10
Egg Production by Type – States and United States: July 2010 and 2011	11
Forced Molt as Percent of All Layers by Month – United States: 2010-2011	12
Forced Molt as Percent of All Layers – States and United States: August 1, 2010 and 2011	12
Hatchery Production – United States: 2010 and 2011	13
Egg-Type Eggs in Incubators – Regions and United States: August 1, 2010 and 2011	14
Egg-Type Chicks Hatched by Month – United States: 2010-2011	14
Intended Placements of Egg-Type Pullet Chicks for Hatchery Supply Flocks by Month – United States: 2010-2011	15
Broiler-Type Eggs in Incubators – Regions and United States: August 1, 2010 and 2011	15
Broiler-Type Chicks Hatched – States and United States: July 2010 and 2011	16
Broiler-Type Chicks Hatched by Month – United States: 2010-2011	16
Intended Placements of Broiler-Type Pullet Chicks for Hatchery Supply Flocks by Month and Total: 2010-2011	17
Statistical Methodology	18
Regional Listing.....	19
Terms and Definitions of Chickens and Eggs Estimates	19
Information Contacts	19

Average Number of All Layers on Hand During the Month – United States: 2010-2011

[Blank data cells indicate estimation period has not yet begun]

Month	2010		2011	
	(1,000 layers)		(1,000 layers)	
December ¹		340,936		342,661
January		340,596		341,701
February		340,486		339,338
March		342,098		340,461
April		341,318		340,688
May		339,344		337,919
June		339,750		336,466
July		339,929		335,763
August		340,084		
September		338,739		
October		336,804		
November		339,447		

¹ December preceding year.

Egg Production During the Month by Type – United States: 2010-2011

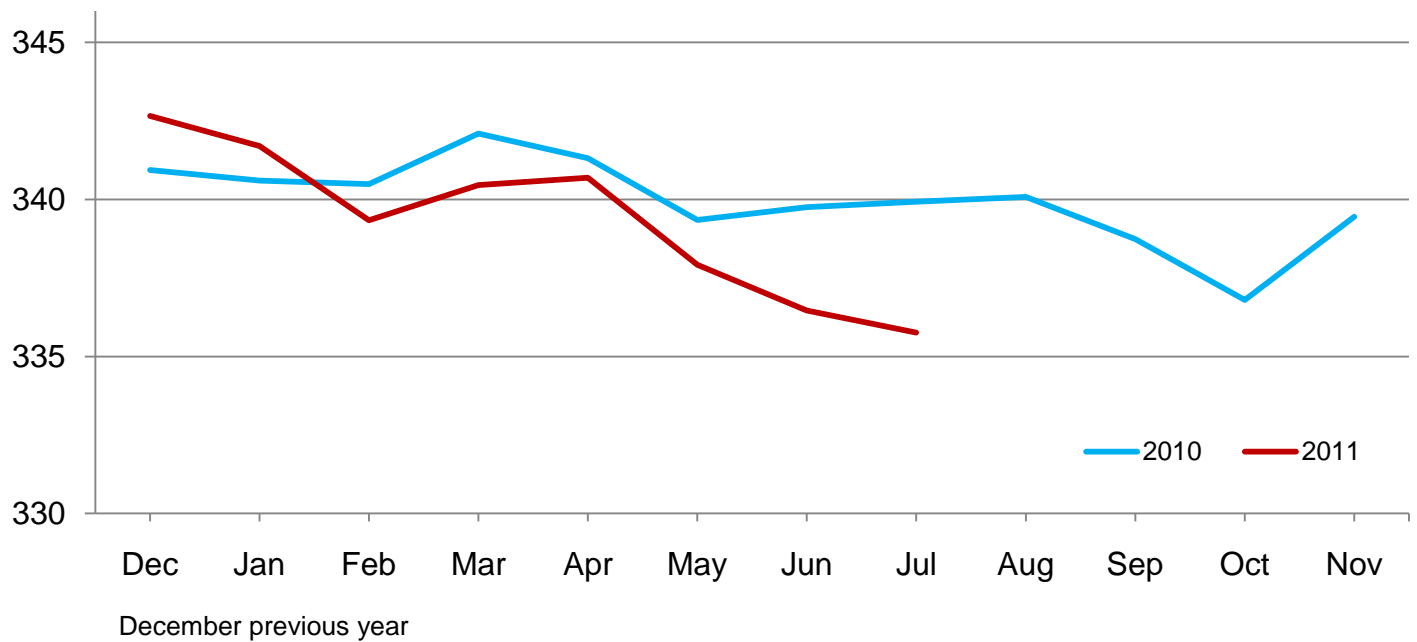
[Blank data cells indicate estimation period has not yet begun. Totals may not add due to rounding]

Month	Total eggs		Table eggs		Hatching eggs	
	2010	2011	2010	2011	2010	2011
	(million eggs)	(million eggs)	(million eggs)	(million eggs)	(million eggs)	(million eggs)
December ¹	7,853	7,920	6,779	6,850	1,074	1,070
January	7,724	7,821	6,637	6,739	1,087	1,083
February	6,935	7,006	5,950	6,029	985	976
March	7,839	7,836	6,740	6,754	1,098	1,083
April	7,578	7,617	6,503	6,555	1,075	1,062
May	7,716	7,777	6,607	6,671	1,109	1,107
June	7,484	7,505	6,415	6,438	1,069	1,068
July	7,719	7,735	6,610	6,651	1,109	1,085
August	7,765		6,669		1,096	
September	7,514		6,464		1,050	
October	7,698		6,618		1,080	
November	7,573		6,538		1,036	
During year	91,398		78,530		12,868	

¹ December preceding year.

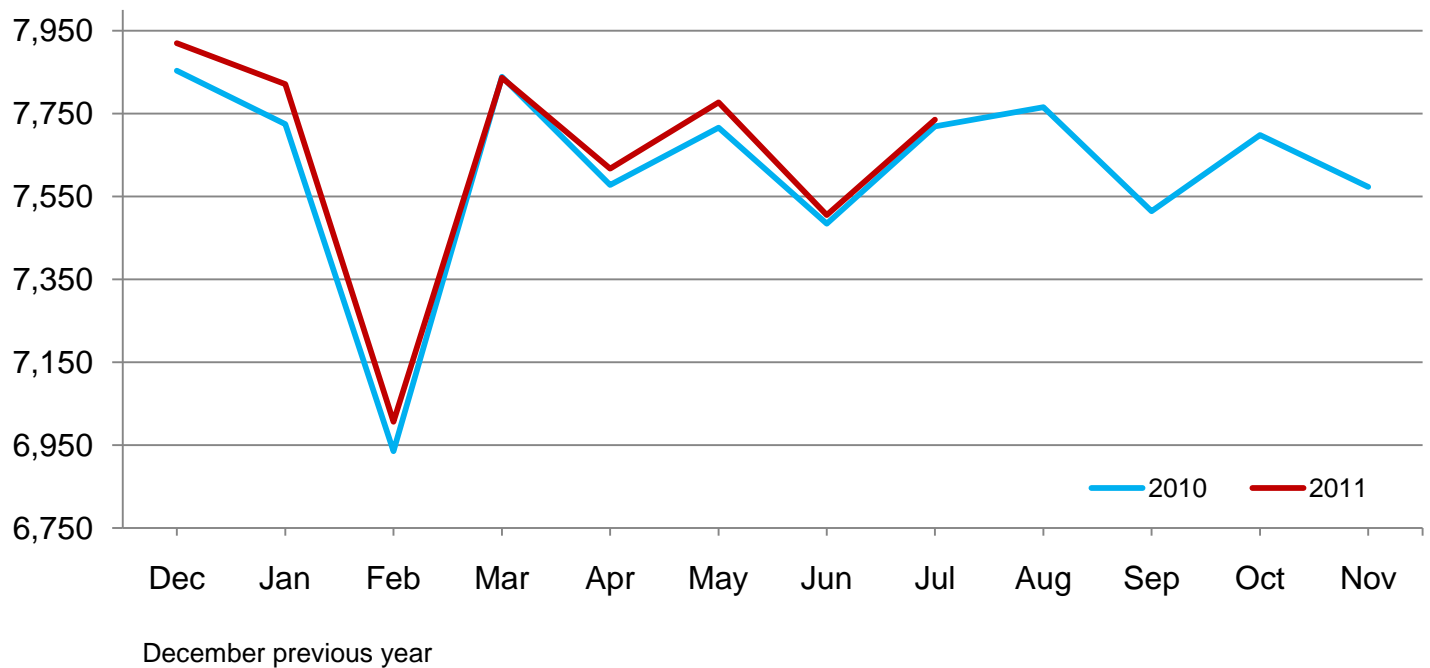
Average Layers During the Month – United States

Million layers



All Egg Production During the Month – United States

Million eggs



Layers on Hand and Eggs Produced by Type and Forced Molt – United States: June-July 2010 and 2011

[Totals may not add due to rounding]

Item	2010	2011	2011 as percent of 2010
Layers during June			
All layers 1,000	339,750	336,466	99
Table egg type 1,000	281,425	278,951	99
Hatching egg type 1,000	58,325	57,515	99
Broiler-type hatching 1,000	55,397	54,592	99
Egg-type hatching 1,000	2,928	2,923	100
Eggs per 100 layers during June			
All layers number	2,203	2,231	101
Table egg type number	2,279	2,308	101
Hatching egg type number	1,833	1,857	101
Broiler-type hatching number	1,805	1,830	101
Egg-type hatching number	2,357	2,361	100
Eggs produced during June			
All layers million	7,484	7,505	100
Table egg type million	6,415	6,438	100
Hatching egg type million	1,069	1,068	100
Broiler-type hatching million	1,000	999	100
Egg-type hatching million	69	69	100
Layers on July 1			
All layers 1,000	340,442	336,574	99
Table egg type 1,000	281,976	279,400	99
Hatching egg type 1,000	58,466	57,174	98
Broiler-type hatching 1,000	55,542	54,349	98
Egg-type hatching 1,000	2,924	2,825	97
Eggs per 100 layers on July 1			
All layers number	73.3	74.4	102
Table egg type number	75.8	77.0	102
Hatching egg type number	61.1	61.6	101
Broiler-type hatching number	60.2	60.8	101
Egg-type hatching number	78.7	78.0	99
Forced molt layers on July 1			
Being molted percent	3.3	3.5	106
Molt completed percent	22.5	19.5	87
Layers sold for slaughter during June 1,000	14,007	13,243	95
Layers rendered, died, destroyed, composted or disappeared for any reason during June 1,000	7,923	8,178	103
Pullets on July 1 1,000	103,435	105,712	102
Pullets added during June ¹ 1,000	23,308	22,609	97

¹ Pullet chicks less than 3 days old added to pullet flocks.

**Layers on Hand and Eggs Produced by Type and Forced Molt – United States:
July-August 2010 and 2011**

[Totals may not add due to rounding]

Item	2010	2011	2011 as percent of 2010
Layers during July			
All layers 1,000	339,929	335,763	99
Table egg type 1,000	281,751	279,277	99
Hatching egg type 1,000	58,178	56,486	97
Broiler-type hatching 1,000	55,234	53,640	97
Egg-type hatching 1,000	2,944	2,846	97
Eggs per 100 layers during July			
All layers number	2,271	2,304	101
Table egg type number	2,346	2,382	102
Hatching egg type number	1,906	1,921	101
Broiler-type hatching number	1,877	1,896	101
Egg-type hatching number	2,446	2,389	98
Eggs produced during July			
All layers million	7,719	7,735	100
Table egg type million	6,610	6,651	101
Hatching egg type million	1,109	1,085	98
Broiler-type hatching million	1,037	1,017	98
Egg-type hatching million	72	68	94
Layers on August 1			
All layers 1,000	339,384	334,912	99
Table egg type 1,000	281,509	279,137	99
Hatching egg type 1,000	57,875	55,775	96
Broiler-type hatching 1,000	54,915	52,916	96
Egg-type hatching 1,000	2,960	2,859	97
Eggs per 100 layers on August 1			
All layers number	73.2	74.2	101
Table egg type number	75.6	76.6	101
Hatching egg type number	61.6	62.0	101
Broiler-type hatching number	60.7	61.3	101
Egg-type hatching number	78.9	75.4	96
Forced molt layers on August 1			
Being molted percent	3.4	3.6	106
Molt completed percent	22.6	19.3	85
Layers sold for slaughter during July 1,000	13,672	14,625	107
Layers rendered, died, destroyed, composted or disappeared for any reason during July 1,000	8,055	8,835	110
Pullets on August 1 1,000	104,150	104,149	100
Pullets added during July ¹ 1,000	22,460	21,361	95

¹ Pullet chicks less than 3 days old added to pullet flocks.

Layers on Hand and Eggs Produced – States and United States: During June 2010 and 2011

State	Table egg layers in flocks 30,000 and above		All layers		Eggs per 100 for all layers	
	2010	2011	2010	2011	2010	2011
	(1,000 layers)	(1,000 layers)	(1,000 layers)	(1,000 layers)	(eggs)	(eggs)
Alabama	1,379	1,279	9,843	9,333	1,859	1,854
Arkansas	3,229	3,488	12,060	12,253	1,940	2,032
California	19,180	19,252	19,488	19,553	2,268	2,250
Colorado	3,109	3,611	3,575	4,042	2,378	2,400
Connecticut	2,372	2,200	2,443	2,271	2,333	2,334
Florida	8,769	9,037	9,108	9,416	2,174	2,230
Georgia	8,196	7,713	16,963	16,128	2,093	2,071
Hawaii ¹	270	(NA)	315	(NA)	1,778	(NA)
Illinois	4,327	4,119	4,540	4,339	2,181	2,374
Indiana	22,903	22,446	23,616	23,147	2,295	2,346
Iowa	53,663	51,866	54,530	52,714	2,232	2,254
Maine	3,513	3,397	3,568	3,452	2,382	2,346
Maryland	2,152	1,807	2,290	1,942	2,358	2,369
Michigan	9,965	10,133	10,121	10,287	2,213	2,352
Minnesota	9,880	9,637	10,364	10,133	2,277	2,280
Mississippi	1,476	1,466	6,372	6,119	1,962	1,994
Missouri	5,870	5,777	7,220	7,185	2,244	2,338
Nebraska	9,370	9,094	9,420	9,144	2,431	2,373
New York	3,854	3,985	4,067	4,218	2,385	2,418
North Carolina	6,095	5,783	13,612	13,736	1,962	2,038
Ohio	27,482	27,000	27,984	27,479	2,166	2,227
Oregon	2,425	2,189	2,576	2,332	2,290	2,273
Pennsylvania	22,822	23,398	23,928	24,613	2,432	2,434
South Carolina	2,819	3,181	4,087	4,529	2,080	2,142
South Dakota	2,330	2,349	2,370	2,389	2,321	2,428
Texas	13,451	13,322	17,914	17,602	2,144	2,204
Utah	3,322	3,403	3,352	3,433	2,387	2,272
Virginia	1,238	967	3,079	2,874	1,949	1,914
Washington	6,262	6,630	6,377	6,745	2,258	2,328
Wisconsin	3,869	4,111	4,466	4,682	2,373	2,093
Other States ²	11,341	11,801	20,102	20,376	2,119	2,115
United States	276,933	274,441	339,750	336,466	2,203	2,231

(NA) Not available.

¹ Included in Other States in 2011.

² Includes data for States not published in this table.

Layers on Hand and Eggs Produced – States and United States: During July 2010 and 2011

State	Table egg layers in flocks 30,000 and above		All layers		Eggs per 100 for all layers	
	2010	2011	2010	2011	2010	2011
	(1,000 layers)	(1,000 layers)	(1,000 layers)	(1,000 layers)	(eggs)	(eggs)
Alabama	1,322	1,278	9,677	9,223	1,932	1,952
Arkansas	3,230	3,438	12,230	12,114	2,020	2,088
California	19,106	19,171	19,415	19,471	2,333	2,393
Colorado	3,119	3,918	3,589	4,386	2,508	2,371
Connecticut	2,375	2,222	2,446	2,295	2,412	2,397
Florida	8,972	9,040	9,322	9,416	2,263	2,326
Georgia	7,932	7,648	16,654	15,921	2,144	2,154
Hawaii ¹	285	(NA)	330	(NA)	1,788	(NA)
Illinois	4,385	4,165	4,593	4,382	2,308	2,396
Indiana	22,880	22,354	23,560	23,019	2,334	2,355
Iowa	53,865	51,457	54,736	52,324	2,264	2,349
Maine	3,480	3,367	3,535	3,422	2,489	2,425
Maryland	2,131	1,745	2,271	1,867	2,334	2,250
Michigan	9,947	9,996	10,099	10,147	2,426	2,513
Minnesota	9,828	9,618	10,314	10,111	2,346	2,364
Mississippi	1,536	1,417	6,351	5,986	2,015	2,088
Missouri	5,699	5,835	7,087	7,156	2,342	2,320
Nebraska	9,292	9,089	9,342	9,139	2,526	2,484
New York	3,760	4,092	3,977	4,325	2,489	2,428
North Carolina	5,984	5,644	13,505	13,391	2,081	2,046
Ohio	27,794	27,065	28,279	27,526	2,263	2,300
Oregon	2,415	2,141	2,567	2,273	2,415	2,420
Pennsylvania	23,021	23,607	24,148	24,800	2,485	2,492
South Carolina	2,918	3,204	4,180	4,502	2,105	2,221
South Dakota	2,325	2,297	2,365	2,337	2,410	2,525
Texas	13,513	13,776	17,938	17,961	2,185	2,272
Utah	3,268	3,499	3,298	3,529	2,365	2,267
Virginia	1,287	1,149	3,139	2,951	1,911	2,033
Washington	6,266	6,549	6,381	6,664	2,366	2,446
Wisconsin	3,910	4,102	4,497	4,671	2,402	2,248
Other States ²	11,414	11,884	20,104	20,454	2,189	2,161
United States	277,259	274,767	339,929	335,763	2,271	2,304

(NA) Not available.

¹ Included in Other States in 2011.

² Includes data for States not published in this table.

Egg Production by Type – States and United States: June 2010 and 2011

[Totals may not add due to rounding. Data by type of flock not shown for some States to avoid disclosing individual operations, data included in United States totals]

State	Total production		Table eggs		Hatching eggs	
	2010	2011	2010	2011	2010	2011
	(million eggs)	(million eggs)	(million eggs)	(million eggs)	(million eggs)	(million eggs)
Alabama	183	173	32	31	151	142
Arkansas	234	249	73	83	161	166
California	442	440	(D)	(D)	(D)	(D)
Colorado	85	97	(D)	(D)	(D)	(D)
Connecticut	57	53	(D)	(D)	(D)	(D)
Florida	198	210	194	204	4	6
Georgia	355	334	186	176	169	158
Hawaii ¹	5.6	(NA)	5.6	(NA)	-	(NA)
Illinois	99	103	96	100	3	3
Indiana	542	543	530	531	12	12
Iowa	1,217	1,188	1,204	1,175	13	13
Maine	85	81	(D)	(D)	(D)	(D)
Maryland	54	46	52	44	2	2
Michigan	224	242	(D)	(D)	(D)	(D)
Minnesota	236	231	228	223	8	8
Mississippi	125	122	36	36	89	86
Missouri	162	168	(D)	(D)	(D)	(D)
Nebraska	229	217	229	217	-	-
New York	97	102	(D)	(D)	(D)	(D)
North Carolina	267	280	140	140	127	140
Ohio	606	612	(D)	(D)	(D)	(D)
Oregon	59	53	57	51	2	2
Pennsylvania	582	599	563	578	19	21
South Carolina	85	97	63	74	22	23
South Dakota	55	58	55	58	-	-
Texas	384	388	(D)	(D)	(D)	(D)
Utah	80	78	80	78	-	-
Virginia	60	55	27	20	33	35
Washington	144	157	(D)	(D)	(D)	(D)
Wisconsin	106	98	(D)	(D)	(D)	(D)
Other States ²	426	431	292	300	134	132
United States	7,484	7,505	6,415	6,438	1,069	1,068

- Represents zero.

(D) Withheld to avoid disclosing data for individual operations.

(NA) Not available.

¹ Included in Other States in 2011.

² Includes data for States not published in this table.

Egg Production by Type – States and United States: July 2010 and 2011

[Totals may not add due to rounding. Data by type of flock not shown for some States to avoid disclosing individual operations, data included in United States totals]

State	Total production		Table eggs		Hatching eggs	
	2010	2011	2010	2011	2010	2011
	(million eggs)	(million eggs)	(million eggs)	(million eggs)	(million eggs)	(million eggs)
Alabama	187	180	32	30	155	150
Arkansas	247	253	77	84	170	169
California	453	466	(D)	(D)	(D)	(D)
Colorado	90	104	(D)	(D)	(D)	(D)
Connecticut	59	55	(D)	(D)	(D)	(D)
Florida	211	219	206	213	5	6
Georgia	357	343	182	183	175	160
Hawaii ¹	5.9	(NA)	5.9	(NA)	-	(NA)
Illinois	106	105	103	102	3	3
Indiana	550	542	538	530	12	12
Iowa	1,239	1,229	1,226	1,216	13	13
Maine	88	83	(D)	(D)	(D)	(D)
Maryland	53	42	51	40	2	2
Michigan	245	255	(D)	(D)	(D)	(D)
Minnesota	242	239	233	231	9	8
Mississippi	128	125	38	37	90	88
Missouri	166	166	(D)	(D)	(D)	(D)
Nebraska	236	227	236	227	-	-
New York	99	105	(D)	(D)	(D)	(D)
North Carolina	281	274	146	133	135	141
Ohio	640	633	(D)	(D)	(D)	(D)
Oregon	62	55	60	53	2	2
Pennsylvania	600	618	580	597	20	21
South Carolina	88	100	66	78	22	22
South Dakota	57	59	57	59	-	-
Texas	392	408	(D)	(D)	(D)	(D)
Utah	78	80	78	80	-	-
Virginia	60	60	25	25	35	35
Washington	151	163	(D)	(D)	(D)	(D)
Wisconsin	108	105	(D)	(D)	(D)	(D)
Other States ²	440	442	301	308	139	135
United States	7,719	7,735	6,610	6,651	1,109	1,085

- Represents zero.

(D) Withheld to avoid disclosing data for individual operations.

(NA) Not available.

¹ Included in Other States in 2011.

² Includes data for States not published in this table.

Forced Molt as Percent of All Layers by Month – United States: 2010-2011

[As of the first of the month. Blank data cells indicate estimation period has not yet begun]

Month	Being molted		Molt completed	
	2010 (percent)	2011 (percent)	2010 (percent)	2011 (percent)
January	2.7	2.8	20.8	21.3
February	3.6	3.6	20.3	20.3
March	3.2	3.1	21.2	20.2
April	2.8	2.6	21.3	20.0
May	4.2	3.0	21.5	20.0
June	3.3	3.8	22.7	19.4
July	3.3	3.5	22.5	19.5
August	3.4	3.6	22.6	19.3
September	2.6		23.0	
October	4.4		21.7	
November	2.7		22.5	
December	1.8		22.5	

Forced Molt as Percent of All Layers – States and United States: August 1, 2010 and 2011

[As of the first of the month]

State	Being molted		Molt completed	
	2010 (percent)	2011 (percent)	2010 (percent)	2011 (percent)
Alabama	0.5	2.5	6.0	8.0
Arkansas	1.5	1.0	12.5	7.5
California	5.0	7.0	29.0	27.5
Colorado	-	1.0	21.5	17.5
Connecticut	-	-	12.0	13.0
Florida	6.5	6.5	38.0	34.5
Georgia	7.0	3.5	13.0	17.0
Hawaii ¹	9.5	(NA)	43.5	(NA)
Illinois	7.0	6.5	21.5	25.5
Indiana	3.5	6.0	31.0	21.5
Iowa	3.0	4.5	39.5	33.5
Maine	-	-	-	-
Maryland	3.5	5.0	12.5	17.5
Michigan	1.5	1.5	24.0	13.5
Minnesota	5.0	4.5	21.5	22.5
Mississippi	2.0	1.0	9.0	10.5
Missouri	1.0	3.0	19.5	15.5
Nebraska	1.0	-	1.0	1.5
New York	0.5	-	11.5	7.0
North Carolina	2.0	3.0	12.0	14.5
Ohio	4.0	3.5	21.5	13.5
Oregon	2.5	2.5	29.0	31.5
Pennsylvania	2.0	1.0	11.5	10.0
South Carolina	5.0	3.5	16.0	15.0
South Dakota	7.0	2.5	30.0	21.0
Texas	2.5	3.5	20.0	18.5
Utah	10.5	6.0	35.5	40.0
Virginia	7.5	5.5	15.5	7.0
Washington	9.5	5.0	34.0	29.5
Wisconsin	8.0	11.5	22.5	24.0
Other States ²	2.5	2.7	17.6	14.4
United States	3.4	3.6	22.6	19.3

- Represents zero.

(NA) Not available.

¹ Included in Other States in 2011.

² Includes data for States not published in this table.

Hatchery Production – United States: 2010 and 2011

Item	2010	2011	2011 as percent of 2010
	(1,000)	(1,000)	(percent)
Egg-type			
Eggs in incubators on August 1	33,381	37,117	111
Chicks hatched during July	38,089	37,405	98
Chicks hatched January through July	294,160	286,128	97
Pullets hatched during July for intended placements:			
Hatchery supply flocks	218	232	106
Cumulative potential placements 7-18 months earlier ¹	3,405	2,981	88
Broiler-type			
Eggs in incubators on August 1	649,404	610,239	94
Chicks hatched during July	801,716	770,368	96
Chicks hatched January through July	5,420,203	5,408,778	100
Pullets hatched during July for intended placements:			
Hatchery supply flocks	6,675	6,444	97
Cumulative potential placements 7-15 months earlier ²	61,903	64,656	104

¹ 2011 includes pullet chicks hatched January 2010 through December 2010.

² 2011 includes pullet chicks hatched April 2010 through December 2010.

Egg-Type Eggs in Incubators – Regions and United States: August 1, 2010 and 2011

[See regional listing on page 19]

Region	2010	2011	2011 as percent of 2010
	(1,000 eggs)	(1,000 eggs)	(percent)
North Atlantic	3,507	5,469	156
East North Central	7,295	6,630	91
West North Central	8,037	9,242	115
South Atlantic	2,936	4,456	152
South Central	4,487	4,809	107
West	7,119	6,511	91
United States	33,381	37,117	111

Egg-Type Chicks Hatched by Month – United States: 2010-2011

[Blank data cells indicate estimation period has not yet begun]

Month	By months			Cumulative		
	2010	2011	2011 as percent of 2010	2010	2011	2011 as percent of 2010
	(1,000 chicks)	(1,000 chicks)	(percent)	(1,000 chicks)	(1,000 chicks)	(percent)
January	38,819	41,366	107	38,819	41,366	107
February	39,218	37,336	95	78,037	78,702	101
March	44,914	43,974	98	122,951	122,676	100
April	47,558	43,429	91	170,509	166,105	97
May	43,231	43,305	100	213,740	209,410	98
June	42,331	39,313	93	256,071	248,723	97
July	38,089	37,405	98	294,160	286,128	97
August	37,014			331,174		
September	40,130			371,304		
October	41,300			412,604		
November	38,849			451,453		
December	37,759			489,212		

Intended Placements of Egg-Type Pullet Chicks for Hatchery Supply Flocks by Month – United States: 2010-2011

[Blank data cells indicate estimation period has not yet begun]

Month	Pullet chicks hatched		2011 as percent of 2010	Cumulative potential placements relative to current supply flocks 7-18 months earlier ¹	
	2010	2011		2011	2012
	(1,000 chicks)	(1,000 chicks)	(percent)	(1,000 chicks)	(1,000 chicks)
January	227	220	97	3,292	2,920
February	296	244	82	3,168	2,934
March	260	253	97	3,130	
April	232	287	124	3,161	
May	230	196	85	3,054	
June	318	302	95	3,027	
July	218	232	106	2,981	
August	253			2,974	
September	251			2,922	
October	170			2,915	
November	263			2,970	
December	263			2,936	
Total	2,981				

¹ For July 2011, includes breeder pullet chicks hatched January 2010 through December 2010. The 7-18 months represent the first laying cycle. Molting and additional laying cycles will increase the cumulative potential placements.

Broiler-Type Eggs in Incubators – Regions and United States: August 1, 2010 and 2011

[See regional listing on page 19]

Region	2010	2011	2011 as percent of 2010
	(1,000 eggs)	(1,000 eggs)	(percent)
North Atlantic	12,528	13,169	105
East North Central	12,457	12,953	104
West North Central	30,072	28,141	94
South Atlantic	240,085	229,729	96
South Central	332,268	304,072	92
West	21,994	22,175	101
United States	649,404	610,239	94

Broiler-Type Chicks Hatched – States and United States: July 2010 and 2011

State	During July			January-July		
	2010	2011	2011 as percent of 2010	2010	2011	2011 as percent of 2010
	(1,000 chicks)	(1,000 chicks)	(percent)	(1,000 chicks)	(1,000 chicks)	(percent)
Alabama	115,251	105,394	91	764,206	755,933	99
Arkansas	89,626	80,797	90	612,321	592,915	97
Delaware	14,238	10,916	77	90,684	93,945	104
Florida	4,969	4,962	100	33,538	33,576	100
Georgia	117,828	121,106	103	798,528	840,027	105
Kentucky	28,673	28,799	100	198,286	195,194	98
Louisiana	12,950	12,558	97	87,603	85,834	98
Maryland	29,697	28,575	96	215,510	194,094	90
Mississippi	71,866	69,976	97	491,695	488,714	99
North Carolina	72,985	72,757	100	483,359	505,479	105
Oklahoma	24,970	24,112	97	175,749	175,062	100
Pennsylvania	13,742	14,174	103	93,080	97,900	105
South Carolina	21,771	19,745	91	142,363	134,542	95
Texas	59,095	56,476	96	397,323	387,479	98
Virginia	24,300	23,174	95	161,658	158,216	98
California, Missouri, Tennessee, and West Virginia	73,854	70,565	96	493,673	488,853	99
19 States ¹	775,815	744,086	96	5,239,576	5,227,763	100
Other States ²	25,901	26,282	101	180,627	181,015	100
United States	801,716	770,368	96	5,420,203	5,408,778	100

¹ States in the weekly hatchery production estimating program.

² Not published separately to avoid disclosing data for individual operations.

Broiler-Type Chicks Hatched by Month – United States: 2010-2011

[Blank data cells indicate estimation period has not yet begun]

Month	By months			Cumulative		
	2010	2011	2011 as percent of 2010	2010	2011	2011 as percent of 2010
	(1,000 chicks)	(1,000 chicks)	(percent)	(1,000 chicks)	(1,000 chicks)	(percent)
January	775,431	781,123	101	775,431	781,123	101
February	700,050	708,724	101	1,475,481	1,489,847	101
March	787,939	793,957	101	2,263,420	2,283,804	101
April	768,296	779,859	102	3,031,716	3,063,663	101
May	799,068	806,574	101	3,830,784	3,870,237	101
June	787,703	768,173	98	4,618,487	4,638,410	100
July	801,716	770,368	96	5,420,203	5,408,778	100
August	798,751			6,218,954		
September	762,494			6,981,448		
October	768,094			7,749,542		
November	741,093			8,490,635		
December	786,440			9,277,075		

Intended Placements of Broiler-Type Pullet Chicks for Hatchery Supply Flocks by Month and Total: 2010-2011

[Blank data cells indicate estimation period has not yet begun]

Month	Pullet chicks hatched		2011 as percent of 2010	Cumulative potential placements relative to current supply flocks 7-15 months earlier ¹	
	2010	2011		2011	2012
	(1,000 chicks)	(1,000 chicks)	(percent)	(1,000 chicks)	(1,000 chicks)
United States placements					
January	6,637	6,989	105	62,996	64,366
February	7,021	7,107	101	63,283	63,934
March	6,673	7,058	106	63,250	
April	6,825	7,044	103	63,751	
May	8,351	7,721	92	63,990	
June	7,128	7,211	101	64,558	
July	6,675	6,444	97	64,656	
August	7,313			64,820	
September	7,128			63,576	
October	6,876			63,506	
November	7,589			63,875	
December	6,771			64,283	
Annual total	84,987				
Total placements ²					
January	8,626	8,548	99		
February	9,151	8,782	96		
March	9,033	9,023	100		
April	8,210	8,944	109		
May	10,338	9,612	93		
June	9,055	9,225	102		
July	8,520	8,131	95		
August	9,009				
September	9,087				
October	8,553				
November	9,314				
December	8,596				
Annual total	107,492				

¹ For July 2011, includes breeder pullet chicks hatched April 2010 through December 2010.

² United States production of intended placements worldwide.

Statistical Methodology

Survey Procedures: Primary data for the *Chickens and Eggs* report are from weekly and/or monthly questionnaires sent to producers. An attempt is made to collect information for layer and egg estimates from each known contractor and independent producer who has at least 30,000 table egg layers, flocks of hatchery supply layers, or pullet only operations with at least 500 pullets. Coverage for operations with less than 30,000 table egg layers are estimated each month based on data reported in December. Approximately 650 contractors, independent egg producers, and pullet only operations are contacted each month. All known hatcheries, approximately 300, are contacted for information on a weekly and/or monthly basis.

Estimating Procedures: Sound statistical methodology is employed to derive estimates from the reported data. All data are analyzed for unusual values. Data from each operation are compared to their own past operating profile and to trends from similar operations. Data for missing operations are estimated based on similar operations or historical data. NASS field offices prepare these estimates by using a combination of survey indications and historic trends. Individual State estimates are reviewed by the Agricultural Statistics Board for reasonableness. Individual hatchery data are summed to State, regional, and United States totals.

For chicken hatcheries, chicks hatched consist of all chicks of domesticated breeds including males and chicks destined for hatchery supply flocks and research purposes. Eggs set are eggs in incubators for the purpose of hatching. The relationship of egg-type chicks hatched to chicken inventory and poultry marketings are carefully monitored. The disposition of egg-type chicks hatched prior to placement into the laying flock can vary significantly, which can make comparisons to changes in layer inventory inconsistent over time. Broiler chicks placed are specifically placed on feed for meat production. Intended placement data reported by leading breeders include pullet chicks expected from eggs sold the preceding month. The breeders in this report account for a large percentage of replacement pullets for hatchery supply flocks. Production of replacement pullets by these breeders indicates the number of pullets available to hatchery supply layer flocks several months before the pullets will actually move into the laying flocks. "Hatchery Supply Flocks" include all generations of layers which could lay eggs to supply a hatchery. This includes the generations of parents, grandparents, great-grandparents, pedigree, etc. Also included are research flocks, vaccine flocks, and specific pathogen-free flocks. The broiler cumulative potential placements are a moving total of the intended placements 7-15 months earlier. The egg-type cumulative potential placements of 7-18 months earlier represent the first laying cycle. Molting and additional laying cycles will increase the cumulative potential placements of egg-type hatching flocks.

Revision Policy: The previous month's estimates are subject to revision if late reports or corrected data indicates a different level. Additionally, revisions after the monthly report will be made at the end of the marketing year and published in the annual reports of *Chickens and Eggs Summary* and *Hatchery Production Summary*. Estimates will also be reviewed for chickens and eggs after data from the 5-year Census of Agriculture are available. No revisions will be made after that date.

Reliability: Estimates are based on a census of all known contractors and independent producers who have at least 30,000 table egg layers, flocks of hatchery supply layers, pullet only operations with at least 500 pullets, or operating hatcheries and therefore, have no sampling error. However, estimates are subject to errors such as omission, duplication, and mistakes in reporting, recording, and processing the data. While these errors cannot be measured directly, they are minimized through strict quality controls in the data collection process and a careful review of all reported data for consistency and reasonableness.

To assist in evaluating the reliability of the estimates in this report, the "Root Mean Square Error" is shown for selected items in the following table. The "Root Mean Square Error" is a statistical measure based on past performance and is computed using the differences between first and final estimates. The "Root Mean Square Error" for all layers over the past 24 months is 0.3 percent. This means that chances are 2 out of 3 that the final estimate will not be above or below the current estimate of 336 million layers by more than 0.3 percent. Chances are 9 out of 10 that the difference will not exceed 0.6 percent.

Reliability of Layer and Egg Estimates

[Based on data for the past twenty-four months]

Item	Root mean square error	90 percent confidence level	Difference between first and latest estimate				
			Average	Smallest	Largest	Months	
						Below latest	Above latest
All layers	(percent) 0.3	(percent) 0.6	(1,000) 970	(1,000) 26	(1,000) 2,021	(number) 22	(number) 2
Eggs	0.3	0.5	(million) 21	(million) 1	(million) 45	22	2

Regional Listing

- North Atlantic:** Connecticut, Maine, Massachusetts, New Hampshire, New Jersey, New York, Pennsylvania, Rhode Island, Vermont.
- East North Central:** Illinois, Indiana, Michigan, Ohio, Wisconsin.
- West North Central:** Iowa, Kansas, Minnesota, Missouri, Nebraska, North Dakota, South Dakota.
- South Atlantic:** Delaware, Florida, Georgia, Maryland, North Carolina, South Carolina, Virginia, West Virginia.
- South Central:** Alabama, Arkansas, Kentucky, Louisiana, Mississippi, Oklahoma, Tennessee, Texas.
- West:** Alaska, Arizona, California, Colorado, Hawaii, Idaho, Montana, New Mexico, Nevada, Oregon, Utah, Washington, Wyoming.

Terms and Definitions of Chickens and Eggs Estimates

All Layers includes both table egg and hatching egg flocks regardless of size.

Intended Placements are reported by leading breeders. Coverage may not be 100 percent. Includes expected pullet chicks from eggs sold during the preceding month at the rate of 125 pullet chicks per case of 30 dozen eggs.

Information Contacts

Listed below are the commodity specialists in the Livestock Branch of the National Agricultural Statistics Service to contact for additional information. E-mail inquiries may be sent to nass@nass.usda.gov

- Dan Kerestes, Chief, Livestock Branch (202) 720-3570
- Bruce Boess, Head, Poultry and Specialty Commodities Section (202) 720-4447
- Cody Brokmeyer – Poultry Slaughter, Turkey Hatchery, Turkeys Raised (202) 690-3237
- David Colwell – Cold Storage (202) 720-8784
- Kim Linonis – Layers, Eggs (202) 690-8632
- Troy Marshall – Broiler Hatchery, Chicken Hatchery, Honey (202) 720-3244
- Miste Salmon – Catfish Processing, Catfish Production, Trout Production,
 Census of Aquaculture, Egg Products, Mink (202) 720-0585

Access to NASS Reports

For your convenience, you may access NASS reports and products the following ways:

- All reports are available electronically, at no cost, on the NASS web site: <http://www.nass.usda.gov>
- Both national and state specific reports are available via a free e-mail subscription. To set-up this free subscription, visit <http://www.nass.usda.gov> and in the “Receive NASS Updates” box under “Receive reports by Email,” click on “National” or “State” to select the reports you would like to receive.
- Printed reports may be purchased from the National Technical Information Service (NTIS) by calling toll-free (800) 999-6779, or (703) 605-6220 if calling from outside the United States or Canada. Accepted methods of payment are Visa, MasterCard, check, or money order.

For more information on NASS surveys and reports, call the NASS Agricultural Statistics Hotline at (800) 727-9540, 7:30 a.m. to 4:00 p.m. ET, or e-mail: nass@nass.usda.gov.

The United States Department of Agriculture (USDA) prohibits discrimination in all its programs and activities on the basis of race, color, national origin, age, disability, and where applicable, sex, marital status, familial status, parental status, religion, sexual orientation, political beliefs, genetic information, reprisal, or because all or a part of an individual's income is derived from any public assistance program. (Not all prohibited bases apply to all programs.) Persons with disabilities who require alternative means for communication of program information (Braille, large print, audiotape, etc.) should contact USDA's TARGET Center at (202) 720-2600 (voice and TDD).

To file a complaint of discrimination, write to USDA, Assistant Secretary for Civil Rights, Office of the Assistant Secretary for Civil Rights, 1400 Independence Avenue, S.W., Stop 9410, Washington, DC 20250-9410, or call toll-free at (866) 632-9992 (English) or (800) 877-8339 (TDD) or (866) 377-8642 (English Federal-relay) or (800) 845-6136 (Spanish Federal-relay). USDA is an equal opportunity provider and employer.