

# Hop Stocks

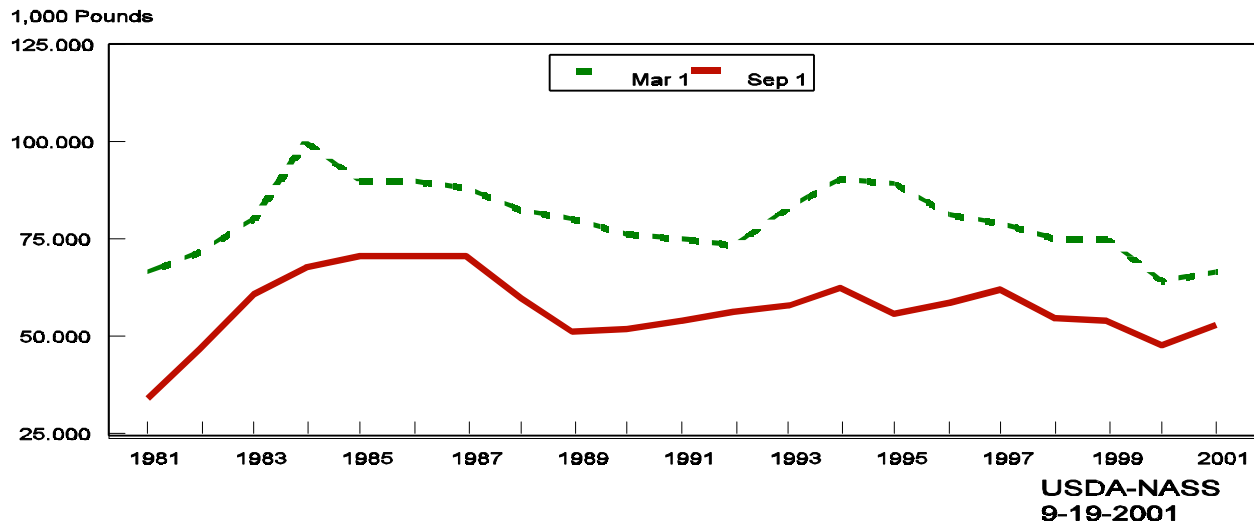
Released September 19, 2001, by the National Agricultural Statistics Service (NASS), Agricultural Statistics Board, U.S. Department of Agriculture. For information on "Hop Stocks" call Kim Ritchie at (360) 902-1940, office hours 8:00 a.m. to 4:30 p.m. PT.

## September 1 Hop Stocks Up Over A Year Ago

The inventory of hops held by growers, dealers, and brewers on September 1, 2001, totaled 54.0 million pounds, 13 percent above September 1, 2000, but the same as two years ago.

Stocks held by brewers, at 38.0 million pounds, were 1 percent greater than last year but 4 percent less than September 1, 1999. Stocks held by growers and dealers on September 1, 2001, were 16.0 million pounds, up 52 percent from the stocks on hand for September 1, 2000, but only 10 percent more than the September 1, 1999 level.

Hop Stocks, March 1 and September 1  
United States, 1981-2001



Hops: Stocks Held by Growers, Dealers, and Brewers,  
United States, 1999-01

Stocks <sup>1</sup>	Mar 1			Sep 1		
	1999	2000	2001	1999	2000	2001
	<i>1,000 Pounds</i>	<i>1,000 Pounds</i>	<i>1,000 Pounds</i>	<i>1,000 Pounds</i>	<i>1,000 Pounds</i>	<i>1,000 Pounds</i>
Stocks Held by:						
Dealers/Growers	25,000	21,000	22,500	14,500	10,500	16,000
Brewers	50,000	43,500	44,500	39,500	37,500	38,000
Total Stocks	75,000	64,500	67,000	54,000	48,000	54,000

<sup>1</sup> Includes equivalent pounds of dry hop held in form of extract or pellets.

The next "Hop Stocks" report will be released at 3 p.m. ET on March 22, 2002.

The United States Department of Agriculture (USDA) prohibits discrimination in all its programs on the basis of race, color, national origin, gender, religion, age, disability, political beliefs, sexual orientation, and marital or family status. (Not all prohibited bases apply to all programs.) Persons with disabilities who require alternative means for communication of program information (braille, large print, audiotape, etc.) should contact the USDA's TARGET Center at 202-720-2600 (voice and TDD).

To file a complaint of discrimination, write USDA, Director, Office of Civil Rights, Room 326-W, Whitten Building, 1400 Independence Avenue, SW, Washington, D.C., 20250-9410, or call 202-720-5964 (voice or TDD). USDA is an equal opportunity provider and employer.

## **ACCESS TO REPORTS!!**

---

For your convenience, there are several ways to obtain NASS reports, data products, and services:

### **INTERNET ACCESS**

All NASS reports are available free of charge on the worldwide Internet. For access, connect to the Internet and go to the NASS Home Page at: <http://www.usda.gov/nass/>. Select "Today's Reports" or Publications and then Reports by Calendar or Publications and then Search, by Title or Subject.

### **E-MAIL SUBSCRIPTION**

There are two options for subscribing via e-mail. All NASS reports are available by subscription free of charge direct to your e-mail address. 1) Starting with the NASS Home Page at <http://www.usda.gov/nass/>, click on **Publications**, then click on the **Subscribe by E-mail** button which takes you to the page describing e-mail delivery of reports. Finally, click on **Go to the Subscription Page** and follow the instructions. 2) If you do NOT have Internet access, send an e-mail message to: [usda-reports@usda.mannlib.cornell.edu](mailto:usda-reports@usda.mannlib.cornell.edu). In the body of the message type the word: **list**.

### **AUTOFAX ACCESS**

NASSFax service is available for some reports from your fax machine. Please call 202-720-2000, using the handset attached to your fax. Respond to the voice prompts. Document 0411 is a list of available reports.

-----  
**PRINTED REPORTS OR DATA PRODUCTS**

**CALL OUR TOLL-FREE ORDER DESK: 800-999-6779 (U.S. and Canada)**  
**Other areas, please call 703-605-6220      FAX: 703-605-6900**  
**(Visa, MasterCard, check, or money order acceptable for payment.)**

-----

### **ASSISTANCE**

For **assistance** with general agricultural statistics or further information about NASS or its products or services, contact the **Agricultural Statistics Hotline** at **800-727-9540**, 7:30 a.m. to 4:00 p.m. ET, or e-mail: [nass@nass.usda.gov](mailto:nass@nass.usda.gov).