

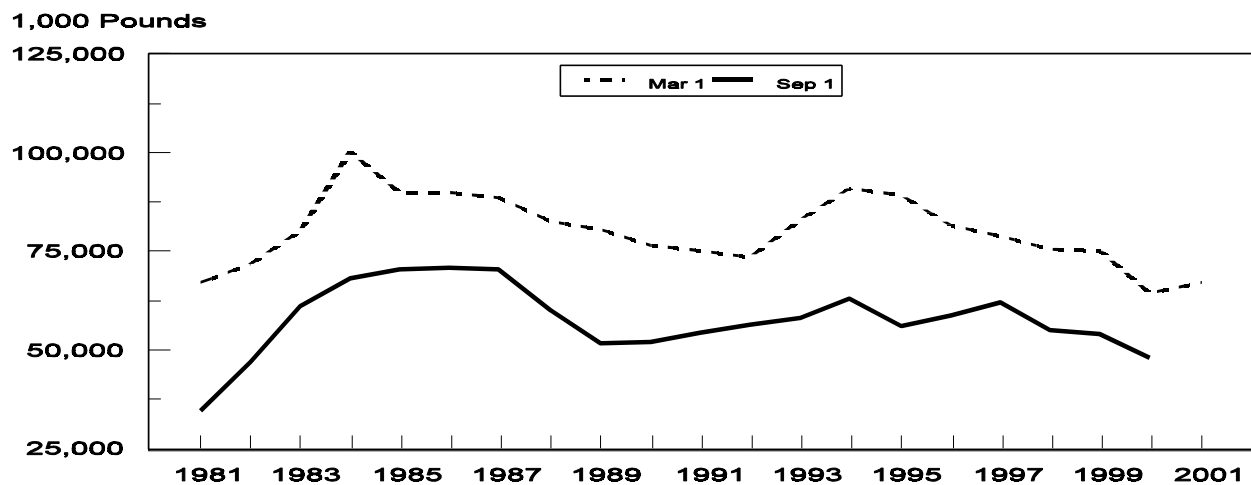
Released March 23, 2001, by the National Agricultural Statistics Service (NASS), Agricultural Statistics Board, U.S. Department of Agriculture. For information on "Hop Stocks" call Kim Ritchie at (360) 902-1940, office hours 8:00 a.m. to 4:30 p.m. PT.

## March 1 Hop Stocks Up Over a Year Ago

The inventory of hops held by growers, dealers, and brewers on March 1, 2001, totaled 67.0 million pounds, 4 percent more than March 1, 2000, but 11 percent less than March 1, 1999. This level of stocks can be compared with record highs and lows for the last ten years, when the high was 90.9 million pounds for March 1, 1994, and the low was last March at 64.5 million pounds.

Stocks held by brewers, at 44.5 million pounds, rose 2 percent from a year ago, but dropped 11 percent from March 1, 1999. Stocks held by growers and dealers on March 1, 2001, totaled 22.5 million pounds, 7 percent more than stocks on hand for March 1, 2000, but 10 percent less than March 1, 1999.

## Hop Stocks, March 1 and September 1 United States, 1981-2001



## Hops: Stocks Held by Growers, Dealers, and Brewers, United States, 1998-2001

Stocks <sup>1</sup>	September 1			March 1		
	1998	1999	2000	1999	2000	2001
	<i>1,000 Pounds</i>	<i>1,000 Pounds</i>	<i>1,000 Pounds</i>	<i>1,000 Pounds</i>	<i>1,000 Pounds</i>	<i>1,000 Pounds</i>
Stocks Held by:						
Dealers/Growers	14,000	14,500	10,500	25,000	21,000	22,500
Brewers	41,000	39,500	37,500	50,000	43,500	44,500
Total Stocks	55,000	54,000	48,000	75,000	64,500	67,000

<sup>1</sup> Includes equivalent pounds of dry hops held in form of extract or pellets.

The next "Hop Stocks" report will be released at 3 p.m. ET on September 19, 2001.

The United States Department of Agriculture (USDA) prohibits discrimination in all its programs on the basis of race, color, national origin, gender, religion, age, disability, political beliefs, sexual orientation, and marital or family status. (Not all prohibited bases apply to all programs.) Persons with disabilities who require alternative means for communication of program information (braille, large print, audiotape, etc.) should contact the USDA's TARGET Center at 202-720-2600 (voice and TDD).

To file a complaint of discrimination, write USDA, Director, Office of Civil Rights, Room 326-W, Whitten Building, 14th and Independence Avenue, SW, Washington, D.C., 20250-9410, or call 202-720-5964 (voice or TDD). USDA is an equal opportunity provider and employer.

## **ACCESS TO REPORTS!!**

---

For your convenience, there are several ways to obtain NASS reports, data products, and services:

### **INTERNET ACCESS**

All NASS reports are available free of charge on the worldwide Internet. For access, connect to the Internet and go to the NASS Home Page at: <http://www.usda.gov/nass/>. Select "Today's Reports" or Publications and then Reports by Calendar or Publications and then Search, by Title or Subject.

### **E-MAIL SUBSCRIPTION**

There are two options for subscribing via e-mail. All NASS reports are available by subscription free of charge direct to your e-mail address. 1) Starting with the NASS Home Page at <http://www.usda.gov/nass/>, click on **Publications**, then click on the **Subscribe by E-mail** button which takes you to the page describing e-mail delivery of reports. Finally, click on **Go to the Subscription Page** and follow the instructions. 2) If you do NOT have Internet access, send an e-mail message to: [usda-reports@usda.mannlib.cornell.edu](mailto:usda-reports@usda.mannlib.cornell.edu). In the body of the message type the word: **list**.

### **AUTOFAX ACCESS**

NASSFax service is available for some reports from your fax machine. Please call 202-720-2000, using the handset attached to your fax. Respond to the voice prompts. Document 0411 is a list of available reports.

-----  
**PRINTED REPORTS OR DATA PRODUCTS**

**CALL OUR TOLL-FREE ORDER DESK: 800-999-6779 (U.S. and Canada)**  
**Other areas, please call 703-834-0125      FAX: 703-834-0110**  
**(Visa, MasterCard, check, or money order acceptable for payment.)**

-----

### **ASSISTANCE**

For **assistance** with general agricultural statistics or further information about NASS or its products or services, contact the **Agricultural Statistics Hotline** at **800-727-9540**, 7:30 a.m. to 4:00 p.m. ET, or e-mail: [nass@nass.usda.gov](mailto:nass@nass.usda.gov).