

Hop Stocks

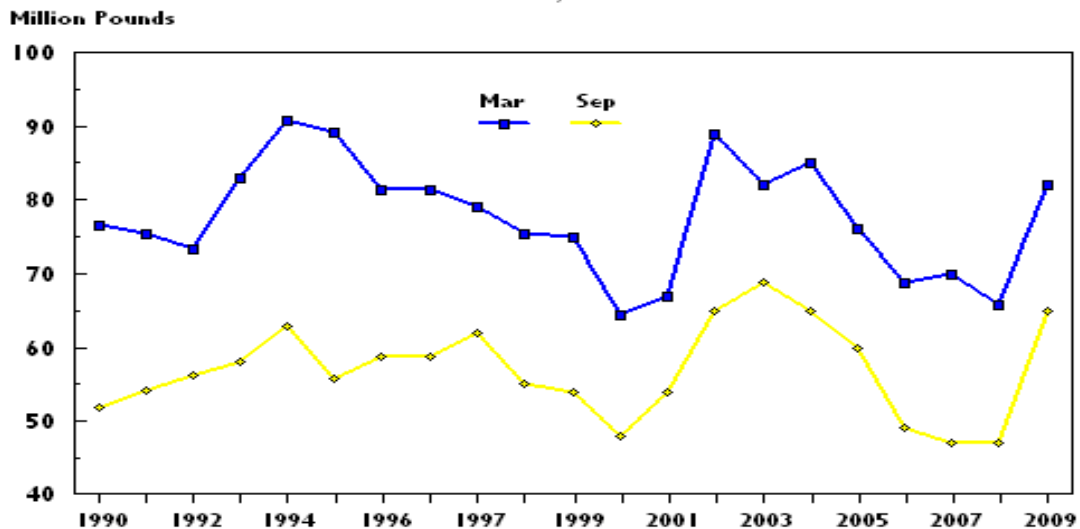
Released September 18, 2009, by the National Agricultural Statistics Service (NASS), Agricultural Statistics Board, U.S. Department of Agriculture. For information on *Hop Stocks* call Kim Ritchie at (360) 902-1940, office hours 8:00 a.m. to 4:30 p.m. PT.

September 1 Hop Stocks Up 38 Percent From Last Year

The inventory of hops held by growers, dealers, and brewers on September 1, 2009, totaled 65.0 million pounds, a 38 percent increase from September 1, 2008 stocks. This is the highest inventory reported as of September 1 since 2003, when stocks were 69.0 million pounds.

Stocks held by brewers, at 40.0 million pounds, were up 38 percent from a year ago. Stocks held by dealers and growers on September 1, 2009, were 25.0 million pounds, up 39 percent from the stocks on hand last year.

**Hop Stocks, March 1 and September 1
United States, 1990-2009**



**Hops: Stocks Held by Growers, Dealers, and Brewers,
United States, 2007-2009**

Stocks ¹	March 1			September 1		
	2007	2008	2009	2007	2008	2009
	1,000 Pounds	1,000 Pounds	1,000 Pounds	1,000 Pounds	1,000 Pounds	1,000 Pounds
Stocks Held by:						
Dealers/Growers	28,000	30,000	42,000	16,000	18,000	25,000
Brewers	42,000	36,000	40,000	31,000	29,000	40,000
Total Stocks	70,000	66,000	82,000	47,000	47,000	65,000

¹ Includes equivalent pounds of dry hops held in form of extract or pellets.

ACCESS TO REPORTS!!

For your convenience, there are several ways to obtain NASS reports, data products, and services:

INTERNET ACCESS

All NASS reports are available free of charge. For free access, connect to the Internet and go to the NASS Home Page at: www.nass.usda.gov.

E-MAIL SUBSCRIPTION

All NASS reports are available by subscription free of charge direct to your e-mail address. Starting with the NASS Home Page at www.nass.usda.gov, under the right navigation, *Receive reports by Email*, click on **National** or **State**. Follow the instructions on the screen.

PRINTED REPORTS OR DATA PRODUCTS

CALL OUR TOLL-FREE ORDER DESK: 800-999-6779 (U.S. and Canada)
Other areas, please call 703-605-6220 FAX: 703-605-6900
(Visa, MasterCard, check, or money order acceptable for payment.)

ASSISTANCE

For **assistance** with general agricultural statistics or further information about NASS or its products or services, contact the **Agricultural Statistics Hotline** at **800-727-9540**, 7:30 a.m. to 4:00 p.m. ET, or e-mail: nass@nass.usda.gov.

The U.S. Department of Agriculture (USDA) prohibits discrimination in all its programs and activities on the basis of race, color, national origin, age, disability, and where applicable, sex, marital status, familial status, parental status, religion, sexual orientation, genetic information, political beliefs, reprisal, or because all or a part of an individual's income is derived from any public assistance program. (Not all prohibited bases apply to all programs.) Persons with disabilities who require alternative means for communication of program information (Braille, large print, audiotape, etc.) should contact USDA's TARGET Center at (202) 720-2600 (voice and TDD).

To file a complaint of discrimination, write to USDA, Director, Office of Civil Rights, 1400 Independence Avenue, S.W., Washington, D.C. 20250-9410, or call (800) 795-3272 (voice) or (202) 720-6382 (TDD). USDA is an equal opportunity provider and employer.