

Released September 21, 2011, by the National Agricultural Statistics Service (NASS), Agricultural Statistics Board, United States Department of Agriculture (USDA).

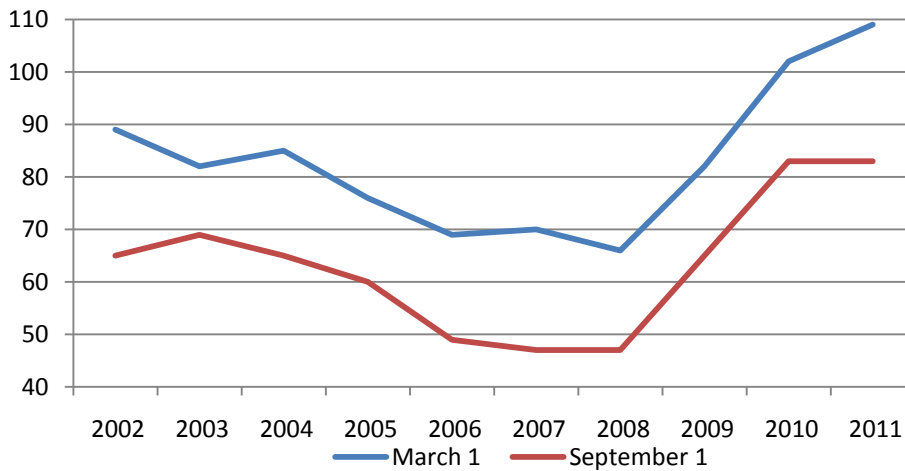
September 1 Hop Stocks Unchanged From Last Year

The inventory of hops held by growers, dealers, and brewers on September 1, 2011 totaled 83.0 million pounds, unchanged from the September 1, 2010 stocks but 28 percent more than the September 1, 2009 stocks. This ties the largest September 1 inventory on record.

Stocks held by brewers, at 46.0 million pounds, were up 2 percent from a year ago and 15 percent above two years ago. Stocks held by dealers and growers on September 1, 2011 totaled 37.0 million pounds, down 3 percent from the stocks on hand last year but 48 percent more than the hop stocks held September 1, 2009.

Hop Stocks – United States

Million pounds



Hops: Stocks Held by Growers, Dealers, and Brewers, United States, 2009-2011

Stocks ¹	March 1			September 1		
	2009	2010	2011	2009	2010	2011
	(1,000 pounds)	(1,000 pounds)	(1,000 pounds)	(1,000 pounds)	(1,000 pounds)	(1,000 pounds)
Stocks held by:						
Dealers/growers	42,000	55,000	55,000	25,000	38,000	37,000
Brewers	40,000	47,000	54,000	40,000	45,000	46,000
Total stocks	82,000	102,000	109,000	65,000	83,000	83,000

¹ Includes equivalent pounds of dry hops held in form of extract or pellets.

Statistical Methodology

Survey Procedures: Grower surveys are conducted in the three estimating States (Washington, Idaho, and Oregon) to collect stocks of hops held by growers. Additionally, contacts are made to collect stocks held by brewers and dealers. Telephone follow-up of mail survey non-respondents is used to ensure adequate coverage.

Estimating Procedures: Information obtained from the hops stocks grower, dealer, and brewers surveys are used to establish estimates of hops stocks. These estimates are reviewed for errors, reasonableness, and consistency with historical estimates.

Revision Policy: All hop stocks estimates are subject to revision the following year based on a thorough review of all available data.

Reliability: Survey indications are subject to sampling variability because all operations storing hops are not included in the sample. Survey results are also subject to non-sampling errors such as omission, duplication, imputation for missing data, and mistakes in reporting, recording, and processing the data. These errors cannot be measured directly, but are minimized through rigid quality controls in the data collection process and a careful review of all reported data for consistency and reasonableness.

Information Contacts

Listed below are the commodity statisticians in the Crops Branch of the National Agricultural Statistics Service to contact for additional information. E-mail inquiries may be sent to nass@nass.usda.gov

Lance Honig, Chief, Crops Branch	(202) 720-2127
Jorge Garcia-Pratts, Head, Fruits, Vegetables and Special Crops Section.....	(202) 720-2127
Debbie Flippin – Fresh and Processing Vegetables, Onions, Strawberries.....	(202) 720-2157
Fred Granja – Apples, Apricots, Cherries, Plums, Prunes, Tobacco.....	(202) 720-4288
Chris Hawthorn – Citrus, Coffee, Grapes, Sugar Crops, Tropical Fruits.....	(202) 720-5412
Dave Losh – Hops	(360) 709-2400
Dan Norris – Austrian Winter Peas, Dry Edible Peas, Lentils, Mints, Mushrooms, Peaches, Pears, Wrinkled Seed Peas, Dry Beans	(202) 720-3250
Daphne Schauber – Berries, Cranberries, Potatoes, Sweet Potatoes.....	(202) 720-4285
Erika White – Floriculture, Maple Syrup, Nursery, Tree Nuts	(202) 720-4215

Access to NASS Reports

For your convenience, you may access NASS reports and products the following ways:

- All reports are available electronically, at no cost, on the NASS web site: <http://www.nass.usda.gov>
- Both national and state specific reports are available via a free e-mail subscription. To set-up this free subscription, visit <http://www.nass.usda.gov> and in the “Receive NASS Updates” box under “Receive reports by Email,” click on “National” or “State” to select the reports you would like to receive.
- Printed reports may be purchased from the National Technical Information Service (NTIS) by calling toll-free (800) 999-6779, or (703) 605-6220 if calling from outside the United States or Canada. Accepted methods of payment are Visa, MasterCard, check, or money order.

For more information on NASS surveys and reports, call the NASS Agricultural Statistics Hotline at (800) 727-9540, 7:30 a.m. to 4:00 p.m. ET, or e-mail: nass@nass.usda.gov.

The United States Department of Agriculture (USDA) prohibits discrimination in all its programs and activities on the basis of race, color, national origin, age, disability, and where applicable, sex, marital status, familial status, parental status, religion, sexual orientation, political beliefs, genetic information, reprisal, or because all or a part of an individual's income is derived from any public assistance program. (Not all prohibited bases apply to all programs.) Persons with disabilities who require alternative means for communication of program information (Braille, large print, audiotape, etc.) should contact USDA's TARGET Center at (202) 720-2600 (voice and TDD).

To file a complaint of discrimination, write to USDA, Assistant Secretary for Civil Rights, Office of the Assistant Secretary for Civil Rights, 1400 Independence Avenue, S.W., Stop 9410, Washington, DC 20250-9410, or call toll-free at (866) 632-9992 (English) or (800) 877-8339 (TDD) or (866) 377-8642 (English Federal-relay) or (800) 845-6136 (Spanish Federal-relay). USDA is an equal opportunity provider and employer.

USDA Data Users' Meeting
Monday October 17, 2011

Crowne Plaza Chicago-Metro
Chicago, Illinois 60661
312-829-5000

The USDA's National Agricultural Statistics Service will be organizing an open forum for data users. The purpose will be to provide updates on pending changes in the various statistical and information programs and seek comments and input from data users. Other USDA agencies to be represented will include the Agricultural Marketing Service, the Economic Research Service, the Foreign Agricultural Service, and the World Agricultural Outlook Board. The Foreign Trade Division from the Census Bureau will also be included in the meeting.

For registration details or additional information for the Data Users' Meeting, see the NASS homepage at <http://www.nass.usda.gov/meeting/> or contact Marie Jordan (NASS) at 202-690-8141 or at marie_jordan@nass.usda.gov.

This Data Users' Meeting precedes an Industry Outlook Meeting that will be held at the same location on Tuesday October 18, 2011. The Outlook meeting brings together analysts from various commodity sectors to discuss the outlook situation. For registration details or additional information for the Industry Outlook Meeting, see the Livestock and Marketing Information Center (LMIC) homepage at <http://www.lmic.info/> or contact Erica Rosa 303-236-0461 at rosa@lmic.info or Laura Lahr 303-236-0464 at lahr@lmic.info.