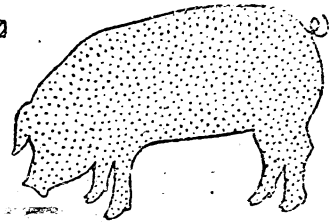


PIG CROP REPORT



U. S. DEPARTMENT OF AGRICULTURE

BUREAU OF AGRICULTURAL ECONOMICS

CROP REPORTING BOARD

WASHINGTON, D. C.

Release: December 20, 1946

12:00 Noon (E. S. T.)

PIG CROP REPORT - DECEMBER 1946

The Crop Reporting Board of the Bureau of Agricultural Economics makes the following report of sows farrowed, pigs per litter, and pigs saved. This report is based upon returns from some 120,000 farmers obtained in cooperation with the Post Office Department through the rural mail carriers.

		SOWS FARROWED							
		Spring (December 1 - June 1)				Fall (June 1 - December 1)			
		Average:	1946	1947	1947 pct.	Average:	1945	1946	1946 pct.
		1935-44:		of 1946	1935-44:		of 1945		of 1945
		Thousand head				Thousand head			
United States	:	8,115	8,137	8,626	106	5,112	5,426	4,725	87
N. Cent. States	:	5,881	6,071	6,541	108	3,167	3,553	2,972	84
(Corn Belt)	:	:	:	:	:	:	:	:	:
		PIGS PER LITTER							
		Spring (December 1 - June 1)				Fall (June 1 - December 1)			
		Average:	1946			Average:	1945	1946	
		1935-44:			1935-44:				
United States	:	6.15	6.46			6.28	6.38	6.48	
N. Cent. States	:	6.27	6.60			6.42	6.47	6.68	
(Corn Belt)	:	:	:			:	:	:	
		PIGS SAVED							
		Spring (December 1 - June 1)				Fall (June 1 - December 1)			
		Average:	1946	1947	1947 pct.	Average:	1945	1946	1946 pct.
		1935-44:		of 1946	1935-44:		of 1945		of 1945
		Thousand head				Thousand head			
United States	:	49,941	52,574	53,000	101	32,199	34,593	30,627	89
N. Cent. States	:	36,801	40,052	41,000	102	20,365	22,985	19,840	86
(Corn Belt)	:	:	:	:	:	:	:	:	:
		PIGS SAVED							
		Yearly Total (Dec. 1 - Dec. 1)							
		Average:	1945	1946	1946 pct.				
		1935-44:		of 1945					
		Thousand head							
United States	:	82,140	86,782	83,201	96				
N. Cent. States	:	57,166	62,917	59,892	95				
(Corn Belt)	:	:	:	:	:				

1/ Spring farrowings indicated from breeding intentions reports. 2/ Ten-year (1935-44) average pigs per litter used to compute number of spring pigs.

APPROVED:

CROP REPORTING BOARD:

M. E. Dodd
ACTING SECRETARY OF AGRICULTURE.

Paul L. Koenig, Vice Chairman,
J. E. Pallesen, Secretary,
C. L. Harlan, H. L. Collins,
R. K. Smith, O. M. Frost,
A. V. Nordquist, C. E. White.

The number of pigs saved in 1946 was about 4 percent smaller than in 1945, a result of an increase of about 1 percent in the spring pig crop and a decrease of 11 percent in the fall crop, the Bureau of Agricultural Economics reported today. An increase of about 6 percent in the number of sows to farrow in the spring season of 1947 is indicated, but if the number of pigs saved per litter is no larger than the 10-year average, the 1947 spring pig crop will be only about 1 percent larger than that of 1946. The number of hogs over 6 months old on December 1 was somewhat smaller than a year earlier.

This report is based upon returns from 120,000 farmers largely obtained in cooperation with the Post Office Department through the rural mail carriers.

Fall Pig Crop: The number of pigs saved in the fall season of 1946 (June 1 to December 1) is estimated at 30,627,000. This number is 11 percent smaller than the 1945 fall crop, is 5 percent below the 1935-44 average, and is the smallest fall crop since 1940. Numbers were down from last year in all regions except the South Atlantic and in nearly all States outside that area. By regions the changes from last year were as follows: North Atlantic, down 12 percent; East North Central, down 9; West North Central, down 19; South Atlantic, up 6; South Central, down 10; and Western, down 22 percent.

The number of sows that farrowed in the 1946 fall season was about 13 percent smaller than in the 1945 fall season for the United States total and 16 percent for the Corn Belt. These declines were not quite so large as indicated by breeding intentions in the June pig crop report. The decreases indicated at that time were 16 percent for the United States and 20 percent for the Corn Belt.

An average of 6.48 pigs saved per litter in the 1946 fall season established a new record, and compares with 6.38 in the fall of 1945 and the 10-year average of 6.28. This high fall average follows the record 1946 spring crop average of 6.46. Exceptionally favorable weather during the principal farrowing months was an important factor in making these high averages possible.

The monthly distribution of farrowings in the 1946 fall season was not greatly different from the 1945 season. A slightly smaller proportion was farrowed in the first 3 months - June to August, mostly offset by a larger proportion in November.

Yearly Pig Crop: The combined spring and fall pig crop of 1946 is estimated at 83,201,000 head. This number is about 4 percent below the 1945 crop and is the smallest crop since 1940, but it is a little larger, about 1 percent, than the 10-year average.

Spring Intentions: Farmers' reports on breeding intentions for the spring season of 1947 indicate that about 8,626,000 sows will farrow in that season. This number would be about 6 percent above both 1946 and the 10-year average. By region the indicated changes are as follows: North Atlantic, up 2 percent; East North Central, up 6; West North Central, up 9; South Atlantic, up 6; South Central, down 2; and Western, down 2 percent.

These changes from last year are based upon breeding intentions reported by farmers about December 1, and upon the relationship between breeding intentions to actual farrowings in other years when hog prices were high, feed supplies plentiful and the hog-corn ratio exceptionally favorable for hog production. The indicated increase, however, is considerably less than has occurred in other years when all these factors were no more favorable than this year. The intentions are considerably below the goals set for the 1947 spring pig crop which called for increases in spring farrowings of 13 percent for the United States, 12 for the East North Central States and 17 for the West North Central.

If the number of sows farrowed in the 1947 spring season is about as now indicated and the number of pigs saved per litter is the same as the 10-year average (6.15 for the United States and 6.27 for the Corn Belt), the 1947 spring pig crop will be larger than 1946 by only 1 percent for the United States and 2 percent for the Corn Belt.

Hogs on Farms: Reports from farmers show that there were about 4 percent fewer hogs over 6 months old (including brood sows) on farms December 1 than a year earlier. Since the 1946 spring pig crop was about the same size as that of 1945, the indications are that 1946 spring pigs have moved to market somewhat faster than did the 1945 spring crop.

Revisions in Estimates: The estimates of sows farrowed and pigs saved shown in this report have been revised somewhat from those previously published. These revisions are based upon the number of sows to farrow in the spring season of 1945 as enumerated by the Bureau of the Census as a part of the 1945 Census of Agriculture. The extent of these revisions was relatively small, either for 1945 or earlier years. The accompanying tables show the present estimates by States and regions for 1945 and 1946 and revised estimates for the years 1940 to 1944 inclusive.

CROP REPORTING BOARD

SOWS FARROWED

PIGS PER LITTER

States	SPRING (Dec. 1-June 1)								FALL (June 1-Dec. 1)				SPRING		FALL	
	1947				1946				1946				Number		Number	
	1935-44	1945	1946	%	1935-44	1945	1946	%	1935-44	1945	1946	%	1945	1946	1945	1946
(000)	(000)	(000)	(000)	(000)	(000)	(000)	(000)	(000)	(000)	(000)	(000)	(000)	1945	1946	1945	1946
Maine	7	6	5	5	100	6	6	4	81	6.5	6.6	6.8	6.7			
N.H.	2	3	2	2	100	2	2	2	94	6.2	6.1	7.0	7.0			
Vt.	3	3	3	3	97	3	2	2	84	6.7	7.1	6.8	7.1			
Mass.	14	14	13	13	100	11	10	8	85	5.7	5.7	5.6	5.4			
R.I.	1	1	1	1	90	1	1	1	89	6.2	6.0	6.5	6.3			
Conn.	3	6	5	5	90	3	4	4	88	5.9	6.3	6.7	6.6			
N.Y.	30	31	27	27	100	25	27	20	74	6.9	7.4	7.1	7.2			
N.J.	13	12	12	11	92	10	9	8	83	6.9	6.9	6.3	6.8			
Pa.	75	78	76	80	105	77	78	71	91	6.5	6.8	6.6	6.8			
N.A.	148	154	144	147	102	138	139	120	86	6.52	6.79	6.63	6.7			
Ohio	401	360	400	416	134	350	364	335	92	6.92	6.90	6.77	6.9			
Ind.	512	498	528	560	106	450	494	464	94	6.79	6.81	6.60	6.6			
Ill.	764	851	860	937	109	477	574	499	87	6.45	6.52	6.43	6.6			
Mich.	119	105	117	110	94	100	98	34	86	6.77	6.90	6.67	6.9			
Wis.	312	315	290	310	107	165	175	144	82	6.68	6.75	6.60	6.8			
N.C.E.	2,108	2,129	2,195	2,333	106	1,542	1,705	1,526	90	6.66	6.71	6.58	6.7			
Minn.	660	669	609	670	110	237	271	192	71	6.21	6.50	6.25	6.5			
Iowa	1,695	1,842	1,768	1,927	109	630	768	622	81	6.34	6.58	6.41	6.6			
Mo.	417	454	418	468	112	367	397	357	90	6.46	6.99	6.50	6.8			
N.Dak.	128	139	120	120	100	22	22	15	68	6.35	6.65	6.41	6.4			
S.Dak.	268	347	337	371	110	57	69	43	62	6.11	6.28	6.05	6.3			
Nebr.	417	473	459	477	104	156	191	118	65	5.95	6.15	6.10	6.2			
Kans.	188	187	165	175	106	156	140	99	71	6.28	6.51	6.44	6.7			
N.C.W.	3,773	4,111	3,876	4,208	109	1,625	1,848	1,446	78	6.27	6.53	6.36	6.6			
N.C.	5,881	6,240	6,071	6,541	108	3,167	3,553	2,972	84	6.40	6.60	6.47	6.6			
Del.	3	4	3	3	103	4	4	4	98	6.5	6.3	6.1	6.5			
Md.	26	27	27	28	104	28	29	26	89	6.6	6.7	6.4	6.6			
Va.	81	75	82	87	106	80	91	84	104	6.7	6.4	6.7	6.9			
W.Va.	24	21	23	25	109	27	25	25	104	6.8	7.1	7.1	7.1			
N.C.	121	116	126	131	104	101	94	100	106	6.3	6.2	6.4	6.4			
S.C.	72	76	80	82	102	64	76	81	106	5.7	5.8	5.9	6.0			
Ga.	198	191	195	211	108	165	172	182	106	5.8	5.8	5.8	6.0			
Fla.	88	110	103	113	110	68	77	87	113	4.7	5.0	5.5	5.9			
S.A.	613	620	639	680	106	537	558	590	106	5.87	5.91	6.10	6.1			
Ky.	150	134	134	145	108	134	132	120	91	6.5	6.6	6.8	6.8			
Tenn.	149	118	129	135	105	133	126	126	100	6.4	6.3	6.5	6.6			
Ala.	123	113	120	120	100	109	116	114	98	5.8	6.0	6.0	5.9			
Miss.	112	110	111	111	100	94	97	95	109	5.2	5.3	5.6	5.5			
Ark.	138	108	116	116	100	114	97	98	101	5.7	5.7	6.3	6.2			
La.	128	124	122	120	98	101	97	89	92	5.1	5.2	5.4	5.0			
Okla.	123	106	99	84	85	116	116	81	70	6.0	6.4	6.4	6.3			
Tex.	224	211	196	176	90	204	205	160	78	6.0	6.1	6.0	6.1			
S.C.	1,147	1,024	1,027	1,007	98	1,005	976	883	90	5.86	5.97	6.15	6.1			
Mont.	30	34	29	25	86	20	22	17	79	6.5	6.7	6.6	6.3			
Idaho	54	33	30	30	100	39	22	15	70	6.3	6.5	6.5	6.6			
Wyo.	11	10	11	12	109	9	7	7	100	5.9	6.3	6.0	6.1			
Colo.	45	40	40	42	105	36	29	21	72	5.9	6.2	6.0	5.9			
N.Mex.	11	12	11	9	82	10	7	5	72	5.4	5.9	6.1	5.8			
Ariz.	5	3	3	4	115	4	3	2	74	5.5	6.0	5.9	6.1			
Utah	15	13	13	12	95	12	11	8	70	6.0	6.4	6.7	6.3			
Nev.	3	4	3	3	100	2	2	2	75	5.6	5.5	5.8	6.5			
Wash.	36	22	24	21	88	27	20	14	70	6.8	7.0	7.0	7.2			
Oreg.	36	23	26	23	88	26	20	15	75	6.9	6.7	6.9	7.0			
Calif.	80	66	66	70	103	80	57	54	94	6.1	6.0	6.2	5.8			
West.	326	260	256	251	98	265	200	160	80	6.22	6.35	6.41	6.2			
U.S.	8,115	8,298	8,137	8,626	103	5,112	5,426	4,725	87	6.29	6.46	6.38	6.4			

1/ Number indicated to farrow from breeding intentions reports.

PIGS SAVED

State and Div.	SPRING (Dec. 1 - June 1)				FALL (June 1 - Dec. 1)				YEAR (Dec. 1 - Dec. 1)			
	10-yr. average: 1935-44:		1946:		10-yr. average: 1935-44:		1946:		10-yr. average: 1935-44:		1946:	
	1945:		1945:		1945:		1945:		1945:		1945:	
	(000)	(000)	(000)	% of 1935-44	(000)	(000)	(000)	% of 1935-44	(000)	(000)	(000)	% of 1945
Me.	43	37	35	95	40	37	30	81	33	74	65	88
N.H.	16	18	13	72	12	12	11	92	23	30	24	80
Vt.	22	21	23	110	21	17	15	88	43	38	38	100
Mass.	79	80	74	92	64	56	46	82	143	136	120	88
R.I.	6	7	6	86	5	6	5	83	11	13	11	85
Conn.	20	33	33	100	20	27	23	85	40	60	56	93
N.Y.	206	214	200	93	178	192	144	75	384	406	344	85
N.J.	81	83	83	100	64	57	51	89	145	140	134	96
Pa.	468	507	517	102	511	515	483	94	979	1,022	1,000	98
N.A.	941	1,000	984	98	915	919	808	88	1,658	1,919	1,792	93
Ohio	2,612	2,491	2,760	111	2,360	2,464	2,325	94	4,972	4,955	5,085	103
Ind.	3,279	3,381	3,596	106	2,947	3,260	3,072	94	6,226	6,641	6,688	100
Ill.	4,714	5,489	5,607	102	3,046	3,691	3,303	89	7,760	9,180	8,910	97
Mich.	725	711	807	114	673	654	581	89	1,458	1,365	1,538	102
Wis.	2,058	2,104	1,958	93	1,109	1,155	985	85	3,167	3,259	2,943	90
N.C.E.	13,448	14,176	14,728	104	10,135	11,224	10,266	91	25,583	25,400	24,994	98
Minn.	4,716	4,154	3,958	95	1,488	1,694	1,250	74	5,614	5,848	5,208	89
Iowa	10,777	11,678	11,633	100	3,952	4,923	4,111	84	14,379	16,601	15,744	95
Mo.	2,664	2,933	2,922	100	2,388	2,560	2,438	94	5,032	5,513	5,360	97
N.Dak.	819	883	793	90	139	141	97	69	953	1,024	895	87
S.Dak.	1,643	2,120	2,116	100	340	417	271	65	1,983	2,537	2,387	94
Nebr.	2,517	2,814	2,823	100	940	1,104	740	67	3,457	3,918	3,563	91
Kans.	1,177	1,174	1,074	91	983	902	667	74	2,160	2,076	1,741	84
N.C.W.	23,353	25,756	25,324	98	10,230	11,761	9,574	81	33,585	37,517	34,893	93
N.C.	36,801	39,932	40,052	100	20,365	22,985	19,840	86	67,166	62,917	59,892	95
Del.	20	23	19	83	24	22	23	105	44	45	42	93
Md.	162	178	181	102	180	186	172	92	342	364	353	97
Va.	506	502	525	105	529	543	580	107	1,055	1,045	1,105	106
W.Va.	165	143	163	114	184	178	185	104	349	321	348	108
N.C.	730	731	781	107	631	602	640	106	1,361	1,333	1,421	107
S.C.	399	433	464	107	373	448	486	108	772	881	950	108
Ga.	1,129	1,108	1,131	102	945	998	1,092	109	2,072	2,106	2,223	106
Fla.	448	517	515	100	356	424	426	100	804	941	941	100
S.A.	3,559	3,635	3,779	104	3,220	3,401	3,604	106	6,779	7,036	7,383	105
Ky.	953	871	884	101	879	898	816	91	1,332	1,769	1,700	96
Tenn.	914	755	813	103	855	819	832	102	1,769	1,574	1,645	105
Ala.	680	655	720	110	618	696	673	97	1,298	1,351	1,393	103
Miss.	594	572	583	103	527	487	522	107	1,121	1,059	1,110	105
Ark.	795	616	661	107	698	611	608	100	1,493	1,227	1,269	103
La.	645	632	634	100	513	524	445	85	1,158	1,156	1,079	93
Okla.	748	636	634	100	728	742	510	69	1,476	1,378	1,144	83
Tex.	1,291	1,266	1,196	94	1,224	1,230	976	79	2,515	2,496	2,172	87
S.C.	6,620	6,003	6,130	102	6,042	6,007	5,382	90	12,662	12,010	11,512	96
Mont.	193	221	194	88	130	145	107	74	325	365	301	82
Idaho	344	208	195	94	255	143	99	69	596	351	294	84
Wyo.	66	59	69	117	53	43	44	102	119	102	113	111
Colo.	264	236	248	105	218	174	124	71	482	410	372	91
N.Mex.	62	65	65	100	58	43	29	67	120	108	94	87
Ariz.	31	19	20	105	25	16	12	75	50	35	32	91
Utah	94	78	83	106	76	74	49	66	170	152	132	87
Nev.	20	21	17	81	11	12	10	83	31	33	27	82
Wash.	243	150	168	112	191	140	101	72	434	290	269	93
Oreg.	244	159	174	109	178	138	105	76	422	297	279	94
Calif.	459	403	396	98	462	353	313	89	921	756	709	94
West.	2,020	1,619	1,629	101	1,657	1,281	993	78	3,677	2,900	2,622	90
U. S.	49,941	52,189	53,574	101	32,199	34,593	30,627	89	82,140	86,782	83,201	96

SOWS FARROWED (Revised Estimates)

State	Spring (Dec. 1 - June 1)					Fall (June 1 - Dec. 1)				
	1940	1941	1942	1943	1944	1940	1941	1942	1943	1944
	Thousands					Thousands				
Maine	6	5	6	8	8	5	5	6	11	6
N.H.	2	2	2	3	4	1	1	2	4	2
Vt.	3	2	3	4	4	3	2	3	5	2
Mass.	13	12	13	15	16	11	11	11	13	11
R.I.	1	1	1	1	1	1	1	1	1	1
Conn.	2	2	4	6	8	2	2	3	5	5
N.Y.	30	23	31	46	44	21	22	30	45	25
N.J.	13	11	14	19	18	8	9	12	16	10
Pa.	78	63	77	108	95	70	70	89	120	74
N.A.	148	121	151	210	198	122	123	157	220	135
Ohio	450	392	459	551	474	367	360	432	488	337
Ind.	574	522	595	690	586	469	488	561	651	462
Ill.	815	766	912	1,094	897	481	553	658	697	495
Mich.	138	120	139	181	127	105	109	129	156	92
Wis.	326	320	362	431	332	153	196	214	255	150
N.C.E.	2,303	2,120	2,467	2,947	2,416	1,575	1,706	1,994	2,247	1,536
Minn.	720	720	821	985	683	230	276	328	356	212
Iowa	1,704	1,704	2,028	2,454	1,939	580	771	910	928	640
Mo.	458	412	531	648	494	381	427	534	545	366
N.Dak.	114	122	188	265	160	16	20	31	46	25
S.Dak.	268	265	350	510	343	43	62	83	88	48
Nebr.	353	325	494	766	498	112	170	264	240	139
Kans.	174	158	262	369	184	128	186	255	230	114
N.C.W.	3,791	3,706	4,674	5,997	4,301	1,490	1,912	2,405	2,463	1,544
N.C.	6,094	5,826	7,141	8,944	6,717	3,065	3,618	4,399	4,710	3,080
Del.	3	3	4	4	5	4	4	4	6	4
Md.	27	22	28	36	34	26	27	32	41	28
Va.	77	67	90	117	99	71	74	96	125	76
W.Va.	23	19	24	32	28	22	21	31	40	22
N.C.	113	106	136	159	151	88	91	120	148	104
S.C.	66	57	78	99	86	57	58	74	91	71
Ga.	184	184	215	256	248	149	170	206	220	167
Fla.	82	82	90	115	121	66	70	73	100	80
S.A.	575	540	665	818	772	483	515	636	771	552
Ky.	152	125	190	228	166	130	140	190	196	116
Tenn.	138	126	185	231	155	112	132	178	190	125
Ala.	113	99	127	165	140	92	100	127	170	110
Miss.	98	89	115	156	125	67	79	107	138	87
Ark.	141	111	148	185	127	101	116	142	141	96
La.	122	116	116	145	146	90	91	97	125	95
Okla.	115	109	163	212	106	96	130	174	171	97
Tex.	204	184	270	364	262	167	207	269	323	188
S.C.	1,083	959	1,314	1,686	1,227	845	995	1,284	1,454	914
Mont.	29	27	41	69	45	17	21	31	44	22
Idaho	62	58	73	77	46	39	48	54	54	26
Wyo.	12	10	15	20	12	7	8	13	15	7
Colo.	39	37	67	95	46	26	38	60	68	30
N.Mex.	10	9	13	17	15	9	10	14	14	9
Ariz.	6	6	7	9	5	4	5	7	6	4
Utah	16	13	20	28	16	10	11	18	23	10
Nev.	4	3	4	4	4	2	2	2	2	2
Wash.	37	32	44	55	37	25	29	38	46	19
Oreg.	39	35	43	46	34	25	28	31	37	18
Calif.	93	84	86	96	72	84	84	96	101	54
West.	347	314	413	516	332	248	284	364	410	201
U.S.	8,247	7,760	9,684	12,174	9,246	4,763	5,535	6,840	7,565	4,882

PIGS SAVED, SPRING

State	(Dec. 1-June 1) Revised Estimates										
	Number					Pigs per litter					
	1940	1941	1942	1943	1944	1940	1941	1942	1943	1944	
	Thousands										
Maine	36	33	37	53	59	6.4	6.8	6.1	6.5	7.0	
N.H.	12	12	14	21	27	6.0	6.6	7.3	6.8	6.6	
Vt.	20	16	20	27	29	6.5	6.2	6.5	6.4	6.8	
Mass.	68	61	69	84	90	5.2	5.1	5.3	5.6	5.6	
R.I.	6	6	7	7	8	6.2	6.2	6.0	5.8	6.3	
Conn.	13	14	22	31	45	5.3	5.8	5.9	5.7	7.0	
N.Y.	198	161	205	308	308	6.6	7.0	6.6	6.7	6.0	
N.J.	74	66	85	114	113	5.7	6.0	6.1	6.0	6.3	
Pa.	476	403	493	659	637	6.1	6.4	6.4	6.1	6.7	
N.A.	903	772	952	1,304	1,316	6.10	6.35	6.31	6.21	6.63	
Ohio	2,776	2,619	3,121	3,438	3,062	6.17	6.68	6.80	6.24	6.46	
Ind.	3,473	3,482	4,004	4,271	3,750	6.05	6.67	6.73	6.19	6.40	
Ill.	4,882	4,918	5,846	6,597	5,391	5.99	6.42	6.41	6.03	6.01	
Mich.	880	806	956	1,140	842	6.38	6.72	6.88	6.30	6.63	
Wis.	2,155	2,182	2,451	2,806	2,148	6.61	6.82	6.77	6.51	6.47	
N.C.E.	14,166	14,007	16,378	18,252	15,193	6.15	6.61	6.64	6.19	6.29	
Minn.	4,457	4,601	5,222	6,137	4,132	6.19	6.39	6.36	6.23	6.05	
Iowa	10,360	10,906	12,756	15,117	11,537	6.08	6.40	6.29	6.16	5.95	
Mo.	2,771	2,670	3,452	4,037	3,008	6.05	6.48	6.50	6.23	6.09	
N.Dak.	739	814	1,248	1,662	986	6.48	6.67	6.64	6.27	6.16	
S.Dak.	1,643	1,659	2,202	3,136	1,983	6.13	6.26	6.29	6.15	5.78	
Nebr.	2,129	2,022	3,008	4,581	2,814	6.03	6.22	6.09	5.98	5.65	
Kans.	1,072	1,016	1,635	2,229	1,108	6.16	6.43	6.24	6.04	6.02	
N.C.W.	23,171	23,688	29,523	36,899	25,568	6.11	6.39	6.32	6.15	5.94	
N.C.	37,337	37,695	45,901	55,151	40,761	6.13	6.47	6.43	6.17	6.07	
Del.	21	18	23	28	30	6.3	6.3	6.1	6.2	6.2	
Md.	165	139	176	223	221	6.1	6.3	6.3	6.2	6.5	
Va.	462	429	567	702	614	6.0	6.4	6.3	6.0	6.2	
W.Va.	152	133	170	221	190	6.6	7.0	7.1	6.9	6.8	
N.C.	667	657	843	970	921	5.9	6.2	6.2	6.1	6.1	
S.C.	350	314	429	505	499	5.3	5.5	5.5	5.1	5.8	
Ga.	975	1,067	1,247	1,485	1,414	5.3	5.8	5.8	5.8	5.7	
Fla.	410	435	459	586	593	5.0	5.3	5.1	5.1	4.9	
S.A.	3,202	3,192	3,914	4,720	4,482	5.56	5.91	5.89	5.77	5.81	
Ky.	912	838	1,254	1,436	1,062	6.0	6.7	6.6	6.3	6.4	
Tenn.	814	819	1,128	1,409	961	5.9	6.5	6.1	6.1	6.2	
Ala.	576	554	711	908	812	5.1	5.6	5.6	5.5	5.8	
Miss.	490	481	610	842	662	5.0	5.4	5.3	5.4	5.3	
Ark.	790	677	888	1,110	724	5.6	6.1	6.0	6.0	5.7	
La.	598	580	592	740	774	4.9	5.0	5.1	5.1	5.3	
Okla.	667	676	978	1,314	647	5.8	6.2	6.0	6.2	6.1	
Tex.	1,142	1,067	1,620	2,148	1,520	5.6	5.8	6.0	5.9	5.8	
S.C.	5,989	5,692	7,781	9,907	7,162	5.53	5.94	5.92	5.88	5.84	
Mont.	191	184	275	421	288	5.6	6.8	6.7	6.1	6.2	
Idaho	403	377	460	477	281	6.5	6.5	6.3	6.2	6.1	
Wyo.	71	59	88	118	70	5.9	5.9	5.9	5.9	5.9	
Colo.	234	226	362	560	262	6.0	6.1	5.4	5.9	5.7	
N.Mex.	57	50	74	99	80	5.7	5.6	5.7	5.8	5.3	
Ariz.	35	35	42	53	32	5.9	6.0	5.9	5.9	5.9	
Utah	96	84	124	179	102	6.0	6.5	6.2	6.4	6.4	
Nev.	22	19	21	25	25	5.9	6.3	6.0	6.2	6.2	
Wash.	259	230	295	358	240	7.0	7.2	6.7	6.5	6.5	
Oreg.	273	248	288	304	228	7.0	7.1	6.7	6.6	6.7	
Calif.	512	504	516	547	425	5.5	6.0	6.0	5.7	5.9	
West.	2,153	2,017	2,545	3,141	2,033	6.21	6.42	6.17	6.09	6.12	
U. S.	49,584	49,368	61,093	74,223	55,754	6.01	6.36	6.31	6.10	6.03	

PIGS SAVED, FALL

State	(June 1 - Dec. 1) Revised Estimates					Pigs per litter				
	1940	1941	Number 1942	1943	1944	1940	1941	1942	1943	1944
	Thousands									
Maine	34	32	42	75	42	6.9	6.7	6.7	6.8	6.7
N.H.	10	8	12	27	16	6.8	6.2	6.9	7.0	6.5
Vt.	18	17	22	35	18	6.8	6.8	7.2	6.6	7.2
Mass.	63	58	60	68	64	5.7	5.3	5.5	5.2	5.8
R.I.	5	4	5	6	5	6.7	6.6	6.0	6.0	6.0
Conn.	14	14	31	32	26	5.8	5.7	6.0	6.1	6.6
N.Y.	151	161	210	306	173	7.2	7.3	7.0	6.8	5.9
N.J.	53	62	73	104	62	6.6	6.9	6.1	6.5	6.5
Pa.	462	469	596	792	503	6.6	6.7	6.7	6.6	6.8
N.A.	810	825	1,051	1,445	909	6.63	6.67	6.69	6.56	6.71
Ohio	2,481	2,491	2,929	3,216	2,302	6.76	6.92	6.78	6.59	6.83
Ind.	3,100	3,294	3,691	4,179	3,082	6.61	6.75	6.58	6.42	6.67
Ill.	3,117	3,594	4,205	4,412	3,178	6.48	6.50	6.39	6.33	6.42
Mich.	706	751	867	1,009	618	6.72	6.89	6.72	6.47	6.72
Wis.	1,057	1,337	1,440	1,673	984	6.91	6.82	6.73	6.56	6.56
N.C.E.	10,461	11,467	13,132	14,489	10,164	6.64	6.72	6.59	6.45	6.62
Minn.	1,458	1,755	2,112	2,236	1,355	6.34	6.36	6.44	6.28	6.39
Iowa	3,660	4,973	5,760	5,828	4,019	6.31	6.45	6.33	6.28	6.28
Mo.	2,484	2,857	3,551	3,499	2,456	6.52	6.69	6.65	6.42	6.71
N.Dak.	102	128	205	287	150	6.37	6.38	6.61	6.23	6.01
S.Dak.	266	389	504	531	279	6.18	6.28	6.07	6.03	5.81
Nebr.	681	1,071	1,608	1,447	816	6.08	6.30	6.09	6.03	5.87
Kans.	827	1,189	1,622	1,641	726	6.46	6.39	6.36	6.31	6.37
N.C.W.	9,478	12,362	15,362	15,469	9,801	6.36	6.47	6.39	6.28	6.35
N.C.	19,939	23,829	28,494	29,958	19,965	6.51	6.59	6.48	6.36	6.48
Del.	23	24	29	40	24	6.4	6.8	6.4	6.4	6.6
Md.	174	178	208	262	182	6.7	6.6	6.5	6.4	6.5
Va.	462	496	634	825	509	6.5	6.7	6.6	6.6	6.7
W.Va.	154	149	220	276	150	7.0	7.1	7.1	6.9	6.8
N.C.	563	564	756	932	655	6.4	6.2	6.3	6.3	6.3
S.C.	331	336	437	555	412	5.8	5.8	5.9	6.1	5.8
Ga.	849	959	1,215	1,276	952	5.7	5.7	5.9	5.8	5.7
Fla.	350	350	402	530	392	5.3	5.0	5.5	5.3	4.9
S.A.	2,906	3,066	3,901	4,696	3,276	6.02	5.96	6.13	6.09	5.94
Ky.	792	938	1,273	1,294	766	6.6	6.7	6.7	6.6	6.6
Tenn.	728	845	1,157	1,216	825	6.5	6.4	6.5	6.4	6.6
Ala.	506	530	737	986	649	5.5	5.8	5.8	5.8	5.9
Miss.	368	450	621	773	461	5.5	5.7	5.8	5.6	5.3
Ark.	606	731	909	874	595	6.0	6.3	6.4	6.2	6.2
La.	441	455	514	662	494	4.9	5.0	5.3	5.3	5.2
Okla.	605	806	1,148	1,077	601	6.3	6.2	6.6	6.3	6.2
Tex.	1,002	1,242	1,695	2,035	1,109	6.0	6.0	6.3	6.3	5.9
S.C.	5,048	6,047	8,054	8,917	5,500	5.97	6.08	6.27	6.13	6.02
Mont.	110	139	205	277	147	6.5	6.6	6.6	6.3	6.7
Idaho	257	317	356	340	166	6.6	6.6	6.6	6.3	6.4
Wyo.	45	48	81	92	44	6.2	6.4	6.2	6.1	6.3
Colo.	164	239	384	401	177	6.3	6.3	6.4	5.9	5.9
N.Mex.	50	58	90	87	58	5.5	5.8	6.4	6.2	6.4
Ariz.	25	29	42	35	22	5.5	5.5	5.8	5.8	6.0
Utah	68	73	122	152	68	6.8	6.6	6.8	6.6	6.8
Nev.	11	11	12	13	11	5.4	5.6	6.2	6.0	6.1
Wash.	178	206	266	313	133	7.1	7.1	7.0	6.8	7.0
Oreg.	175	193	217	252	124	7.0	6.9	7.0	6.8	6.9
Calif.	496	504	547	606	324	5.9	6.0	5.7	6.0	6.0
West.	1,579	1,817	2,322	2,568	1,274	6.35	6.40	6.38	6.26	6.35
U.S.	30,282	35,584	43,822	47,584	30,924	6.36	6.43	6.41	6.29	6.33

UNITED STATES DEPARTMENT OF AGRICULTURE
BUREAU OF AGRICULTURAL ECONOMICS
CROP REPORTING BOARD

PIG CROP REPORT
as of
December 1, 1946

Washington, D. C.
December 20, 1946
12:00 Noon (E.S.T.)

SOWS FARROWED, PIGS PER LITTER, AND PIGS SAVED, 1924-47, FOR THE UNITED STATES

Year	Sows Farrowed		Pigs per Litter		Pigs Saved		Year
	Spring	Fall	Spring	Fall	Spring	Fall	
	(Dec. 1- June 1)	(June 1- Dec. 1)	(Dec. 1- June 1)	(June 1- Dec. 1)	(Dec. 1- June 1)	(June 1- Dec. 1)	
	Thousand head				Thousand head		
1924	9,799	4,344	5.12	5.49	50,218	23,847	74,065
1925	8,334	3,939	5.74	5.70	47,859	22,451	70,310
1926	9,048	4,330	5.59	5.74	50,579	24,865	75,444
1927	9,754	4,609	5.59	5.80	54,502	26,744	81,246
1928	9,301	4,429	5.63	5.94	52,390	26,292	78,682
1929	8,854	4,264	5.70	6.01	50,479	25,646	76,125
1930	8,278	4,073	5.96	6.09	49,332	24,803	74,135
1931	8,969	4,797	6.02	6.09	53,984	29,192	83,176
1932	8,810	5,179	5.79	6.08	51,031	31,494	82,525
1933	9,122	5,207	5.86	5.90	53,460	30,740	84,200
1934	6,825	2,936	5.82	5.81	39,698	17,068	56,766
1935	5,467	3,857	6.01	6.03	32,884	23,260	56,144
1936	6,954	3,957	5.96	6.14	41,422	24,303	65,725
1937	6,177	3,845	6.23	6.24	38,525	23,994	62,519
1938	6,795	4,517	6.36	6.32	43,289	28,566	71,855
1939	8,692	5,352	6.12	6.30	53,238	33,714	86,952
1940	8,247	4,763	6.01	6.36	49,584	30,282	79,866
1941	7,760	5,535	6.36	6.43	49,368	35,584	84,952
1942	9,684	6,840	6.31	6.41	61,093	43,822	104,915
1943	12,174	7,565	6.10	6.29	74,223	47,534	121,807
1944	9,246	4,882	6.03	6.33	55,754	30,924	86,678
1945	8,298	5,426	6.29	6.38	52,189	34,593	86,782
1946	8,137	4,725	6.46	6.48	52,574	30,627	83,201
1947	<u>1/8,626</u>		<u>2/6.15</u>		<u>2/53,000</u>		

1/ Spring farrowings indicated from breeding intentions reports.

2/ Ten-year (1935-44) average pigs per litter used to compute number of pigs saved spring 1947.

U.S. SOWS FARROWED, BY MONTHS, FALL

Year	June	July	Aug.	Sept.	Oct.	Nov.	Total
Thousand head							
1944	769	532	905	1,486	802	358	4,832
1945	778	598	1,022	1,662	973	393	5,426
1946	670	525	875	1,455	822	378	4,725
Percent of total fall sows farrowed							
1935-44 Av.	12.9	11.4	18.3	30.1	18.6	8.7	100.0
1944	15.8	11.5	18.5	30.5	16.4	7.3	100.0
1945	14.3	11.0	18.9	30.6	17.9	7.3	100.0
1946	14.2	11.1	18.5	30.8	17.4	8.0	100.0