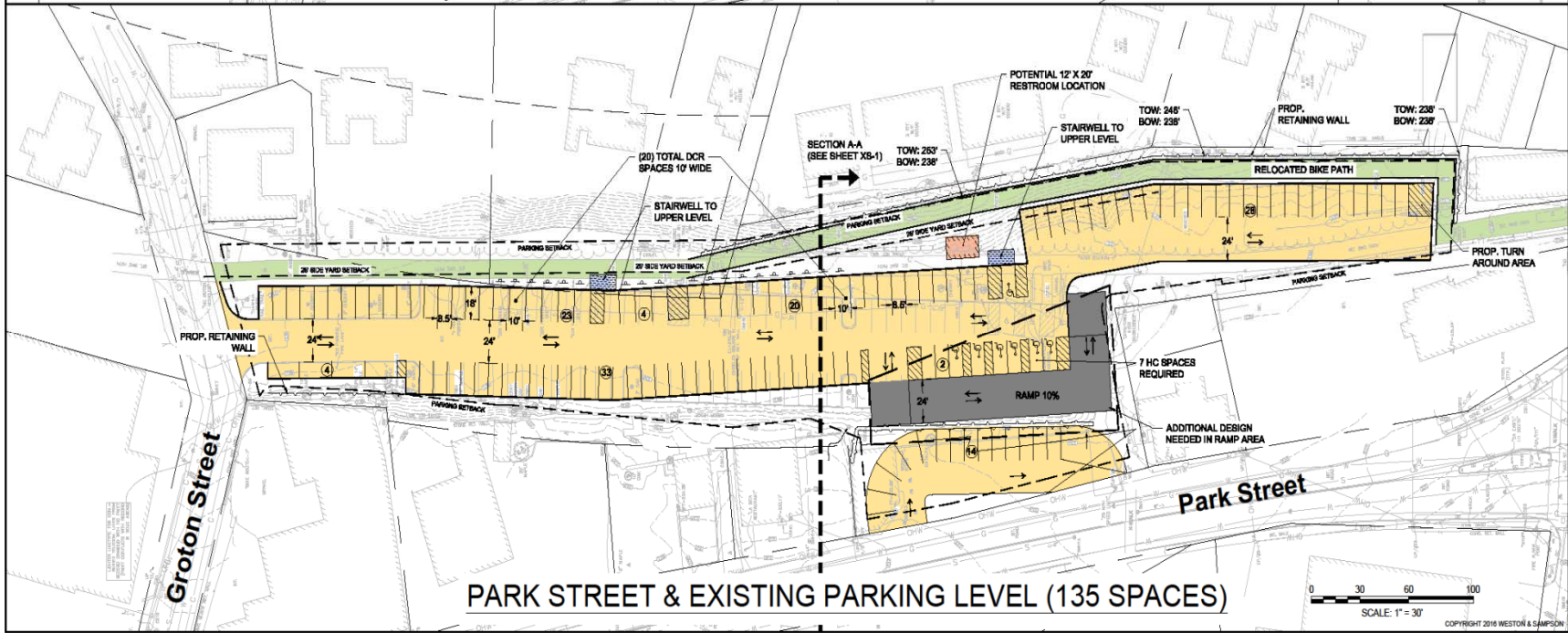
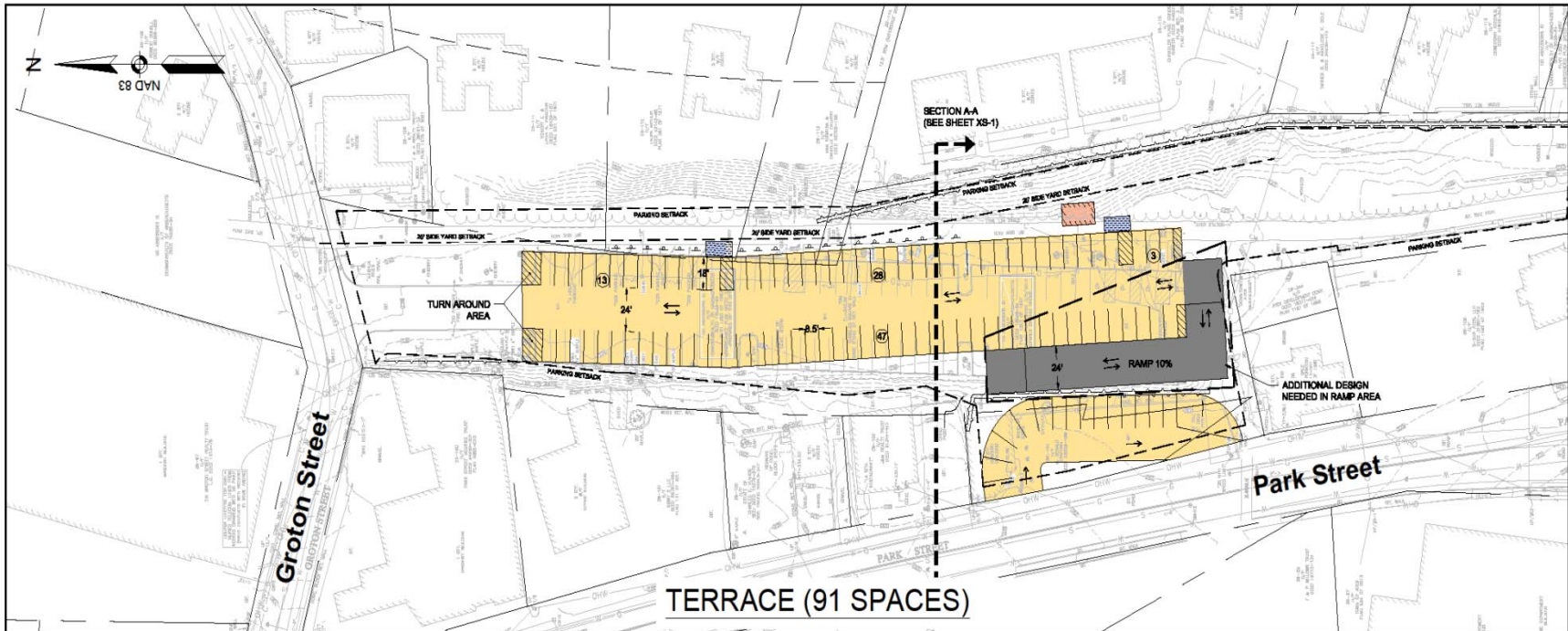


AYER COMMUTER RAIL PARKING FACILITY & DEPOT SQUARE CONCEPT PLANS

**PRESENTATION
BY MART
FEBRUARY 7, 2017**

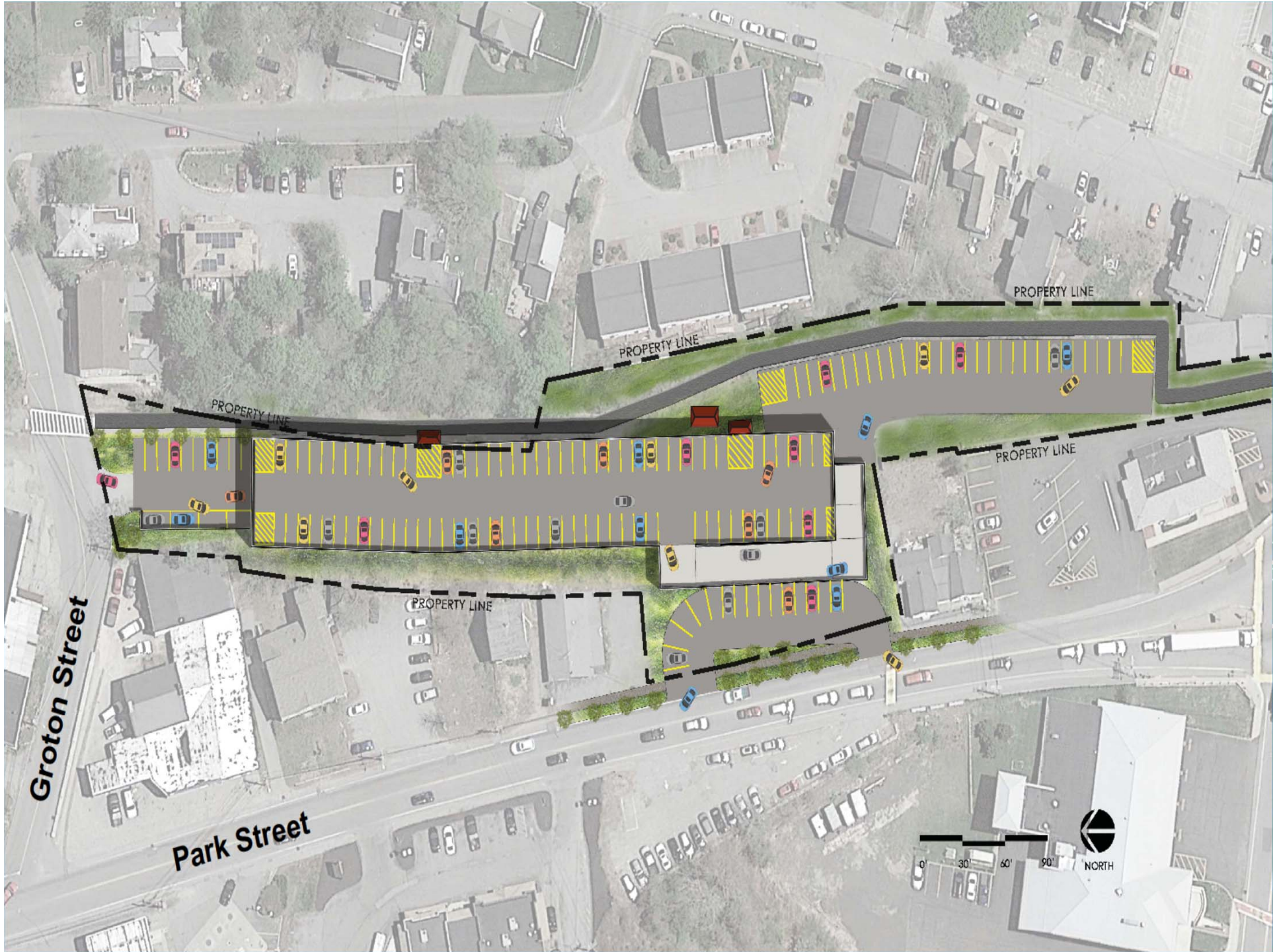




No.	Date	Dr. By	Cr. By	App. By	Description
					A P P R O V E D
					REGISTERED PROFESSIONAL ENGINEER
					DATE

WESTON & SAMPSON
 MONTAGUSETT REGIONAL TRANSIT AUTHORITY
 COMMUTER RAIL PARKING FACILITY
 OPTION 1b (226 SPACES)

FILE NO.	SCALE	CONTRACT	JOB NO.	DRY	WMP	CHK BY	APP	DATE



Groton Street

Park Street

PROPERTY LINE

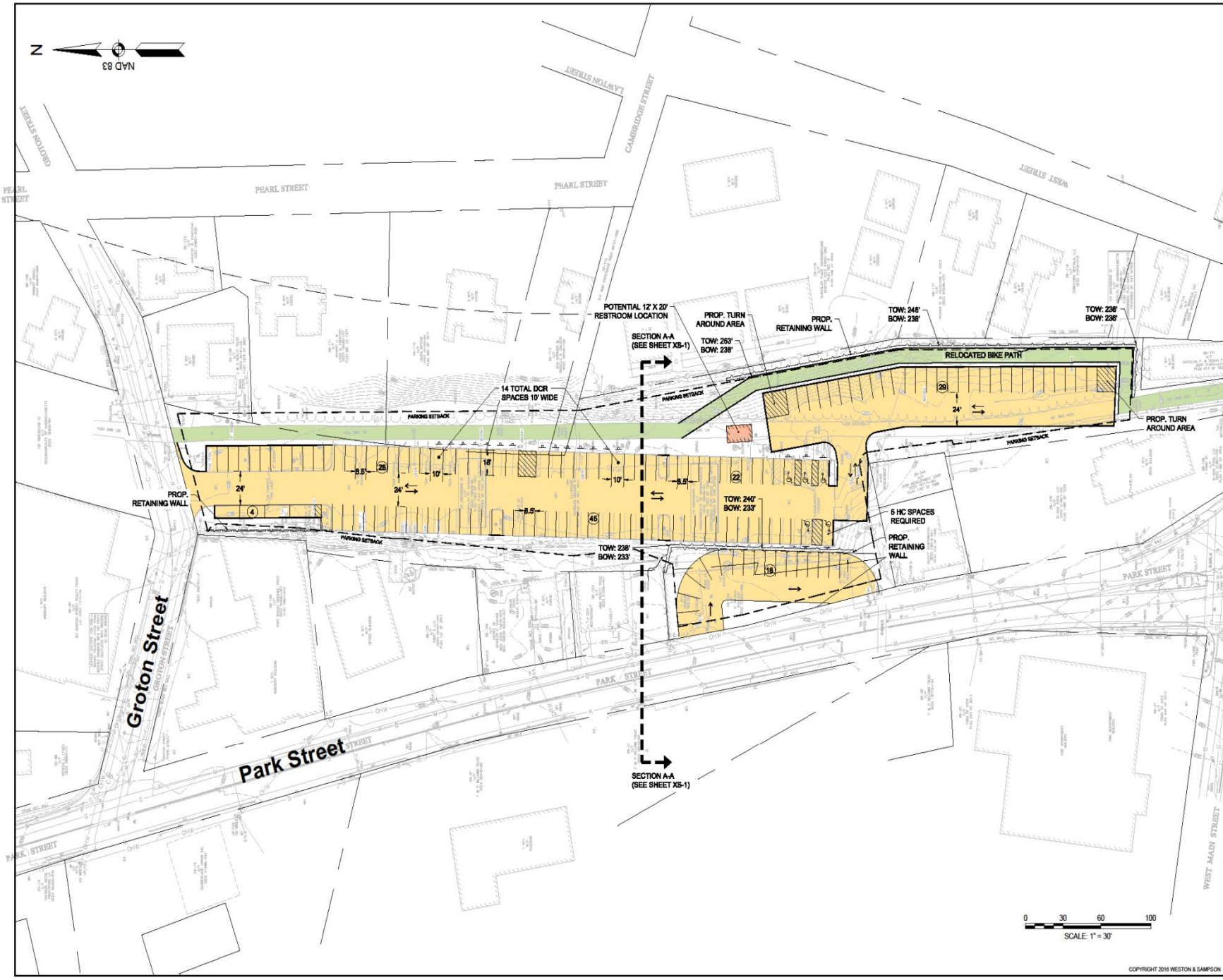
PROPERTY LINE

PROPERTY LINE

PROPERTY LINE

PROPERTY LINE





Weston & Sampson
 100 Frothingham Boulevard,
 Suite 200, Frothingham, MA 02035
 508.548.1000
 www.westonandsampson.com

No.	Date	Dr By	Ch By	App By	Description

REGISTERED PROFESSIONAL ENGINEER _____ DATE _____

AYER, MASSACHUSETTS AUTHORITY
 COMMUTER RAIL PARKING FACILITY

OPTION 1a (148 SPACES)

CONTRACT: _____ JOB NO: _____
 SCALE: _____ DRAWN BY: _____ MAP: _____
 DESIGNED BY: _____ CHECKED BY: _____
 DATE: _____



OPTION 1A (149 SPACES) - PLAN VIEW

AYER MART PARKING FACILITY

JANUARY 2017





OPTION 1B (184 SPACES) - PLAN VIEW

AYER MART PARKING FACILITY

JANUARY 2017





OPTION 1B - TERRACE ELEVATION - BRICK FACADE

AYER MART PARKING FACILITY

JANUARY 2017



Weston & Sampson
transform your environment



Groton Street



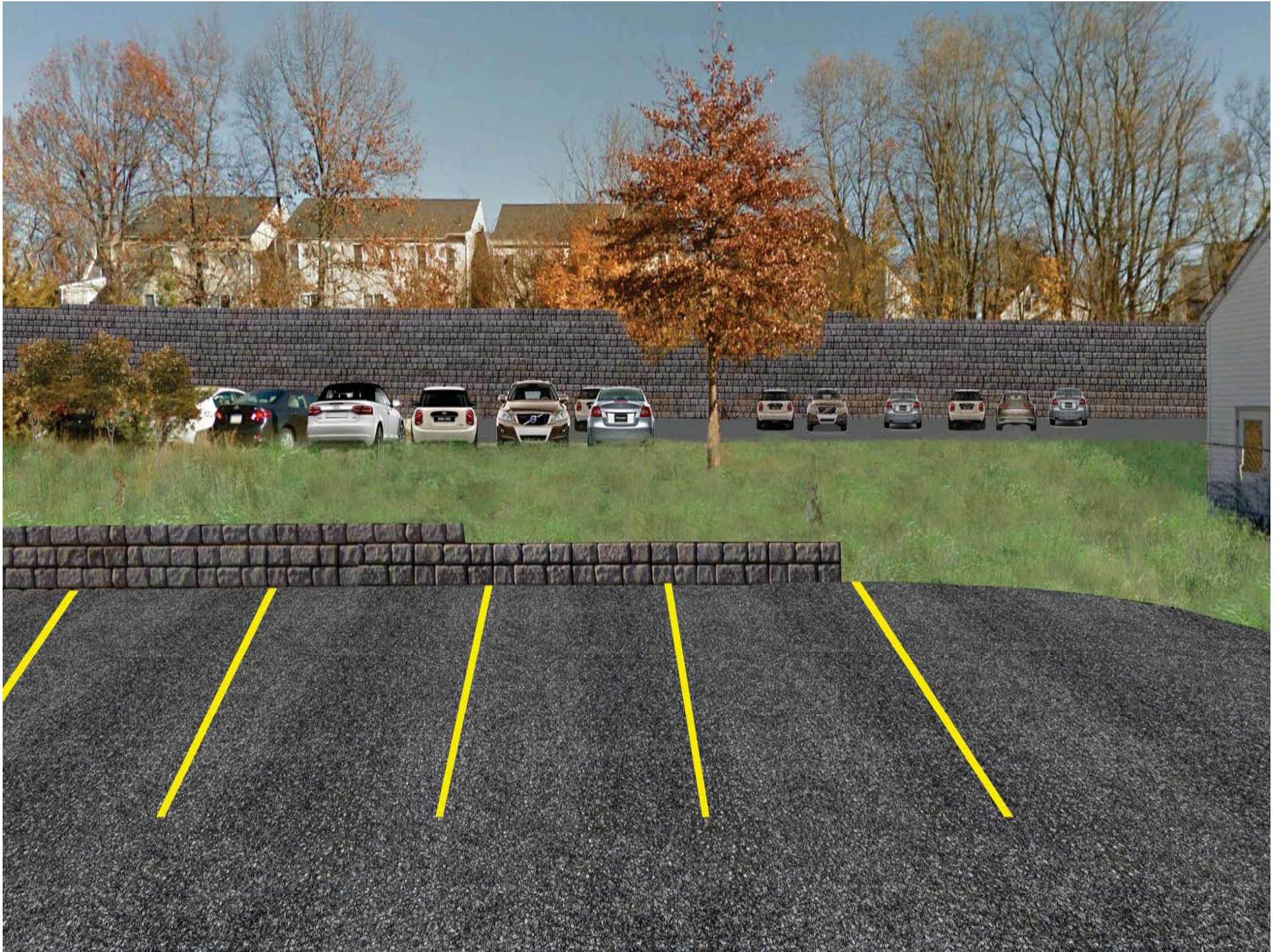
Park Street



Park Street



Park Street





Google Earth
Satellite

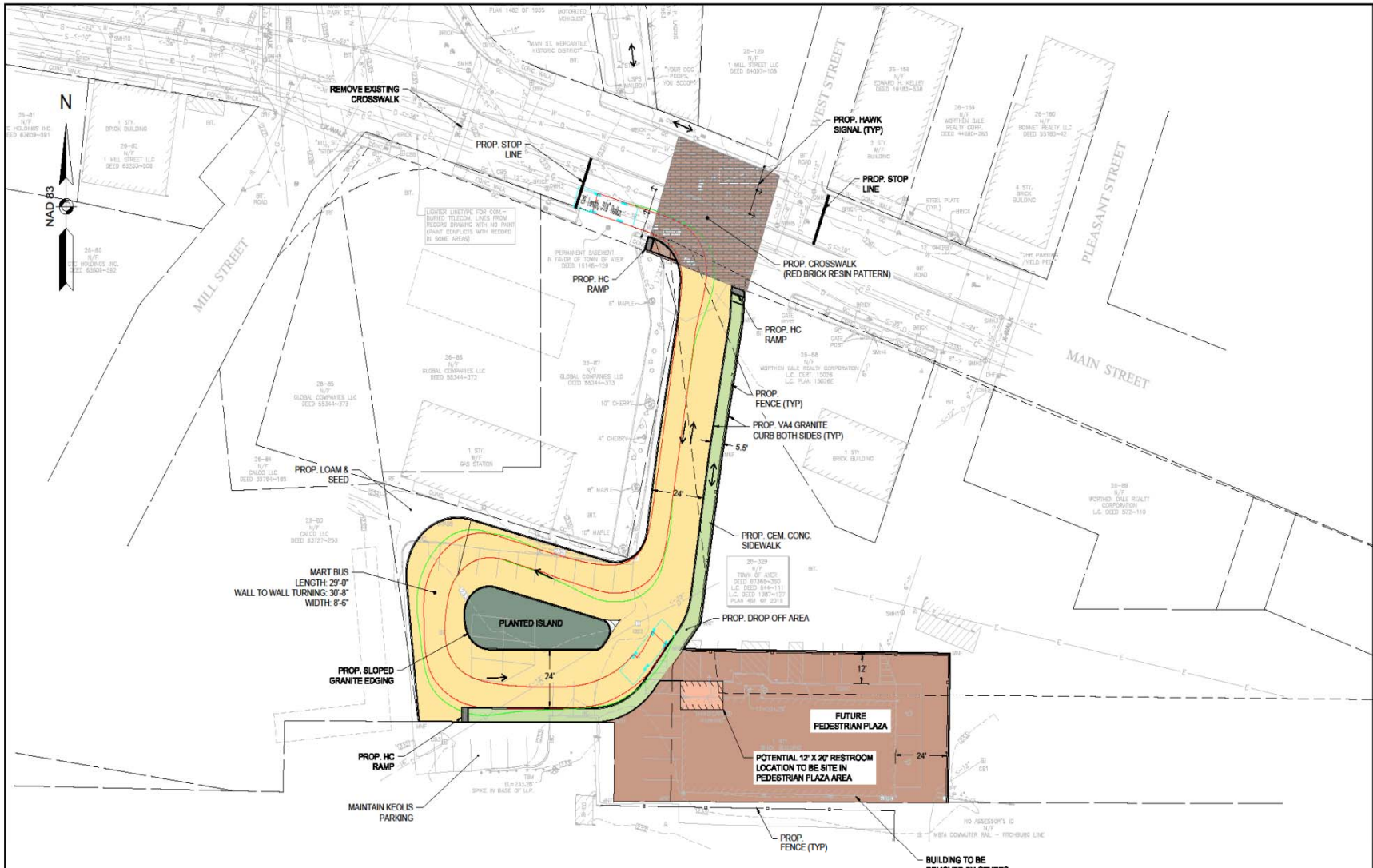
OPTION 1A - WALL ELEVATION SOUTH

AYER MART PARKING FACILITY

JANUARY 2017

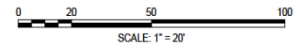


Weston & Sampson
transform your environment



NOTES:
 1. LOAM & SEED ALL DISTURBED AREAS.

LEGEND	
PEDESTRIAN FLOW	= <-->
RESIN	= [Pattern]



Weston & Sampson
 100 Falmouth Boulevard,
 Suite 201, Falmouth, MA 01905
 508.548.1000
 www.westonsampson.com

No.	Date	Dr. By	Ch. By	App. By	Description			
		A	P	R	O	V	E	D

REGISTERED PROFESSIONAL ENGINEER _____ DATE _____

WESTON & SAMPSON
 MONTACHSSETT REGIONAL TRANSIT AUTHORITY
 COMMUTER RAIL PARKING FACILITY

DEPOT SQUARE & PEDESTRIAN CROSSING

CONTRACT: _____ JOB NO.: _____ OR. BY: _____ DR. BY: _____ CH. BY: _____ APP. BY: _____
 SCALE: _____

FILE NO. **DS-1**
 SHEET 6 OF 6



MAIN STREET PEDESTRIAN CROSSING

AYER MART PARKING FACILITY

JANUARY 2017



Weston & Sampson
transform your environment



DEPOT SQUARE

AYER MART PARKING FACILITY

JANUARY 2017



Weston & Sampson
transform your environment



STATE
HIGHWAY
ENDS

FOR



THANK YOU

QUESTIONS

