



United States
Department of
Agriculture

National
Agricultural
Statistics
Service



Poultry Slaughter 2001 Annual Summary

April 2002

Pou 2-1 (02)

USDA



Table of Contents

	Page
Poultry Slaughter: Number, Live Weight, and Average Live Weight by Type, by Month and Annual Total, United States, 2001	2
Poultry Slaughter: Chilled and Frozen, Pounds Certified by Type, by Month and Annual Total, United States, 2001	4
Poultry Slaughter: Ante-Mortem Condemnations by Type, by Month and Annual Total, United States, 2001	6
Poultry Slaughter: Post-Mortem Condemnations by Type, by Month and Annual Total, United States, 2001	8
Young Chickens Slaughtered: Number, Live Weight, Average Live Weight, Pounds Certified, and Post-Mortem Condemnations, by Month and Annual Total, by State, 2001	10
Young Chickens Slaughtered: Number Condemned Post-Mortem by Cause, by Month and Annual Total, by State and United States, 2001	18
Mature Chickens Slaughtered: Number Condemned Post-Mortem by Cause, by Type, by Month and Annual Total, United States, 2001	34
Young Turkeys (Mature) Slaughtered: Number, Live Weight, Average Live Weight, Pounds Certified, and Post-Mortem Condemnations, by Month and Annual Total, by State, 2001	36
Young Turkeys (Mature) Slaughtered: Number Condemned Post-Mortem by Cause, by Month and Annual Total, by State and United States, 2001	40
Old Turkeys (Breeders) Slaughtered: Number Condemned Post-Mortem by Cause, by Month and Annual Total, United States, 2001	48
Reliability Statement	49
Definitions	50

**Poultry Slaughter: Number, Live Weight, and Average Live Weight
by Type, by Month and Annual Total, United States, 2001**

Month	Chickens					Ducks
	Young	Mature			Total	
		Light	Heavy	Total		
		<i>1,000 Head</i>	<i>1,000 Head</i>	<i>1,000 Head</i>		
Number						
Jan	710,683	8,379	5,620	13,999	724,682	2,325
Feb	627,380	7,485	5,249	12,734	640,114	2,001
Mar	700,816	8,679	5,623	14,302	715,118	2,130
Apr	675,819	7,434	5,607	13,041	688,860	2,247
May	755,640	7,499	6,223	13,722	769,362	2,361
Jun	709,053	7,676	5,846	13,522	722,575	2,216
Jul	709,391	6,516	5,991	12,507	721,898	2,263
Aug	776,218	7,682	6,369	14,051	790,269	2,391
Sep	653,275	6,889	5,378	12,267	665,542	2,056
Oct	769,536	8,373	6,169	14,542	784,078	2,226
Nov	667,540	7,190	5,131	12,321	679,861	2,046
Dec	650,962	7,792	5,269	13,061	664,023	1,998
Total	8,406,313	91,594	68,475	160,069	8,566,382	26,260
		<i>1,000 pounds</i>	<i>1,000 pounds</i>	<i>1,000 pounds</i>		
Live Weight						
Jan	3,571,736	29,090	42,992	72,082	3,643,818	15,406
Feb	3,145,972	25,476	40,893	66,369	3,212,341	13,252
Mar	3,515,792	29,377	44,252	73,629	3,589,421	14,015
Apr	3,411,201	25,735	43,939	69,674	3,480,875	14,843
May	3,832,893	25,017	48,926	73,943	3,906,836	15,526
Jun	3,560,370	26,687	46,356	73,043	3,633,413	14,652
Jul	3,509,421	22,622	47,601	70,223	3,579,644	14,861
Aug	3,840,728	26,252	51,341	77,593	3,918,321	15,492
Sep	3,301,361	23,584	43,751	67,335	3,368,696	13,763
Oct	3,912,113	28,351	48,834	77,185	3,989,298	14,997
Nov	3,395,215	24,687	40,380	65,067	3,460,282	13,772
Dec	3,338,705	26,773	41,392	68,165	3,406,870	13,404
Total	42,335,507	313,651	540,657	854,308	43,189,815	173,983
		<i>Pounds</i>	<i>Pounds</i>	<i>Pounds</i>		
Average Live Weight						
Jan	5.03	3.47	7.65	5.15	5.03	6.63
Feb	5.01	3.40	7.79	5.21	5.02	6.62
Mar	5.02	3.38	7.87	5.15	5.02	6.58
Apr	5.05	3.46	7.84	5.34	5.05	6.60
May	5.07	3.34	7.86	5.39	5.08	6.58
Jun	5.02	3.48	7.93	5.40	5.03	6.61
Jul	4.95	3.47	7.95	5.61	4.96	6.57
Aug	4.95	3.42	8.06	5.52	4.96	6.48
Sep	5.05	3.42	8.13	5.49	5.06	6.69
Oct	5.08	3.39	7.92	5.31	5.09	6.74
Nov	5.09	3.43	7.87	5.28	5.09	6.73
Dec	5.13	3.44	7.86	5.22	5.13	6.71
Total	5.04	3.42	7.90	5.34	5.04	6.63

--continued

**Poultry Slaughter: Number, Live Weight, and Average Live Weight
by Type, by Month and Annual Total, United States, 2001 (continued)**

Month	Turkeys			Other Poultry	Total Poultry
	Young	Old	Total		
		<i>1,000 Head</i>	<i>1,000 Head</i>	<i>1,000 Head</i>	
Number					
Jan	21,171	132	21,303		
Feb	19,108	170	19,278		
Mar	21,638	152	21,790		
Apr	20,279	184	20,463		
May	23,254	158	23,412		
Jun	22,414	160	22,574		
Jul	22,812	247	23,059		
Aug	24,780	258	25,038		
Sep	20,928	265	21,193		
Oct	26,395	253	26,648		
Nov	24,518	159	24,677		
Dec	19,635	232	19,867		
Total	266,932	2,370	269,302		
		<i>1,000 pounds</i>	<i>1,000 pounds</i>	<i>1,000 pounds</i>	
Live Weight					
Jan	575,976	3,644	579,620	807	4,239,651
Feb	514,484	4,389	518,873	826	3,745,292
Mar	580,622	4,259	584,881	887	4,189,204
Apr	544,561	4,902	549,463	611	4,045,792
May	612,804	4,203	617,007	908	4,540,277
Jun	582,459	4,202	586,661	885	4,235,611
Jul	587,064	6,397	593,461	1,068	4,189,034
Aug	619,621	6,779	626,400	1,837	4,562,050
Sep	528,328	6,729	535,057	1,320	3,918,836
Oct	675,685	6,900	682,585	2,511	4,689,391
Nov	620,393	4,319	624,712	1,161	4,099,927
Dec	523,329	6,644	529,973	677	3,950,924
Total	6,965,326	63,367	7,028,693	13,498	50,405,989
		<i>Pounds</i>	<i>Pounds</i>	<i>Pounds</i>	
Average Live Weight					
Jan	27.20	27.64	27.21		
Feb	26.92	25.80	26.92		
Mar	26.83	28.01	26.84		
Apr	26.85	26.69	26.85		
May	26.35	26.57	26.35		
Jun	25.98	26.30	25.99		
Jul	25.73	25.89	25.74		
Aug	25.01	26.25	25.02		
Sep	25.24	25.35	25.24		
Oct	25.60	27.24	25.61		
Nov	25.31	27.14	25.32		
Dec	26.65	28.65	26.67		
Total	26.09	26.73	26.10		

**Poultry Slaughter: Chilled and Frozen, Pounds Certified by Type,
by Month and Annual Total, United States, 2001¹**

Month	Chickens				Total	Ducks
	Young	Mature		Total		
		Light	Heavy			
		<i>1,000 Pounds</i>	<i>1,000 Pounds</i>	<i>1,000 Pounds</i>		
Chilled						
Jan	2,403,066	13,987	27,749	41,736	2,444,802	4,229
Feb	2,117,267	12,363	26,526	38,889	2,156,156	3,628
Mar	2,359,358	14,638	29,091	43,729	2,403,087	3,886
Apr	2,282,941	12,222	28,761	40,983	2,323,924	4,268
May	2,597,530	12,220	31,787	44,007	2,641,537	4,420
Jun	2,411,609	12,464	29,939	42,403	2,454,012	4,014
Jul	2,363,828	10,306	30,684	40,990	2,404,818	4,117
Aug	2,602,410	12,489	32,709	45,198	2,647,608	4,293
Sep	2,232,727	10,651	28,795	39,446	2,272,173	3,578
Oct	2,641,339	13,483	31,829	45,312	2,686,651	4,028
Nov	2,276,176	12,058	26,509	38,567	2,314,743	4,007
Dec	2,236,343	12,677	27,004	39,681	2,276,024	4,458
Total	28,524,594	149,558	351,383	500,941	29,025,535	48,926
Frozen						
Jan	219,140	714	225	939	220,079	6,752
Feb	204,899	682	113	795	205,694	5,925
Mar	229,263	547	111	658	229,921	6,341
Apr	232,721	1,060	204	1,264	233,985	6,543
May	238,105	1,095	516	1,611	239,716	6,757
Jun	225,019	1,420	196	1,616	226,635	6,400
Jul	228,976	1,282	206	1,488	230,464	6,470
Aug	248,254	1,124	233	1,357	249,611	6,682
Sep	206,011	1,381	117	1,498	207,509	6,126
Oct	255,832	1,423	226	1,649	257,481	6,547
Nov	224,533	731	64	795	225,328	5,624
Dec	228,462	978	207	1,185	229,647	5,048
Total	2,741,215	12,437	2,418	14,855	2,756,070	75,215
Total Certified						
Jan	2,622,206	14,701	27,974	42,675	2,664,881	10,981
Feb	2,322,166	13,045	26,639	39,684	2,361,850	9,553
Mar	2,588,621	15,185	29,202	44,387	2,633,008	10,227
Apr	2,515,662	13,282	28,965	42,247	2,557,909	10,811
May	2,835,635	13,315	32,303	45,618	2,881,253	11,177
Jun	2,636,628	13,884	30,135	44,019	2,680,647	10,414
Jul	2,592,804	11,588	30,890	42,478	2,635,282	10,587
Aug	2,850,664	13,613	32,942	46,555	2,897,219	10,975
Sep	2,438,738	12,032	28,912	40,944	2,479,682	9,704
Oct	2,897,171	14,906	32,055	46,961	2,944,132	10,575
Nov	2,500,709	12,789	26,573	39,362	2,540,071	9,631
Dec	2,464,805	13,655	27,211	40,866	2,505,671	9,506
Total	31,265,809	161,995	353,801	515,796	31,781,605	124,141

See footnote(s) at end of table.

--continued

**Poultry Slaughter: Chilled and Frozen, Pounds Certified by Type,
by Month and Annual Total, United States, 2001¹ (continued)**

Month	Turkeys			Other Poultry	Total Poultry
	Young	Old	Total		
		<i>1,000 Pounds</i>	<i>1,000 Pounds</i>	<i>1,000 Pounds</i>	
Chilled					
Jan	225,413	2,553	227,966	209	2,677,206
Feb	200,465	2,784	203,249	149	2,363,182
Mar	232,131	2,498	234,629	247	2,641,849
Apr	211,287	3,170	214,457	149	2,542,798
May	227,950	2,689	230,639	246	2,876,842
Jun	205,003	2,557	207,560	265	2,665,851
Jul	205,723	4,115	209,838	321	2,619,094
Aug	237,413	3,721	241,134	473	2,893,508
Sep	211,405	3,625	215,030	286	2,491,067
Oct	264,169	3,407	267,576	318	2,958,573
Nov	247,887	2,504	250,391	242	2,569,383
Dec	210,208	4,110	214,318	225	2,495,025
Total	2,679,054	37,733	2,716,787	3,130	31,794,378
Frozen					
Jan	232,903	318	233,221	296	460,348
Feb	205,458	587	206,045	278	417,942
Mar	226,596	782	227,378	279	463,919
Apr	213,845	504	214,349	215	455,092
May	257,166	482	257,648	303	504,424
Jun	255,717	599	256,316	272	489,623
Jul	259,402	878	260,280	327	497,541
Aug	252,268	1,515	253,783	665	510,741
Sep	212,527	1,561	214,088	515	428,238
Oct	271,942	1,801	273,743	1,256	539,027
Nov	241,782	837	242,619	481	474,052
Dec	204,328	1,115	205,443	198	440,336
Total	2,833,934	10,979	2,844,913	5,085	5,681,283
Total Certified					
Jan	458,316	2,871	461,187	505	3,137,554
Feb	405,923	3,371	409,294	427	2,781,124
Mar	458,727	3,280	462,007	526	3,105,768
Apr	425,132	3,674	428,806	364	2,997,890
May	485,116	3,171	488,287	549	3,381,266
Jun	460,720	3,156	463,876	537	3,155,474
Jul	465,125	4,993	470,118	648	3,116,635
Aug	489,681	5,236	494,917	1,138	3,404,249
Sep	423,932	5,186	429,118	801	2,919,305
Oct	536,111	5,208	541,319	1,574	3,497,600
Nov	489,669	3,341	493,010	723	3,043,435
Dec	414,536	5,225	419,761	423	2,935,361
Total	5,512,988	48,712	5,561,700	8,215	37,475,661

¹ Ready-to-cook weights.

**Poultry Slaughter: Ante-Mortem Condemnations by Type,
by Month and Annual Total, United States, 2001**

	Chickens					Ducks
	Young	Mature			Total	
		Light	Heavy	Total		
		<i>1,000 Pounds</i>	<i>1,000 Pounds</i>	<i>1,000 Pounds</i>		
Live Weight Condemned						
Feb	16,588	605	631	1,236	17,824	23
Mar	12,522	547	592	1,139	13,661	19
Apr	13,802	496	629	1,125	14,927	20
May	11,632	471	622	1,093	12,725	31
Jun	14,477	399	521	920	15,397	31
Jul	15,582	694	827	1,521	17,103	36
Aug	18,546	783	1,239	2,022	20,568	45
Sep	18,478	877	964	1,841	20,319	41
Oct	13,903	495	533	1,028	14,931	31
Nov	12,999	579	481	1,060	14,059	35
Dec	12,028	372	391	763	12,791	30
Total	12,347	470	476	946	13,293	23
Total	172,904	6,788	7,906	14,694	187,598	365
		<i>Percent</i>	<i>Percent</i>	<i>Percent</i>		
Percent of Total Weight Condemned ¹						
Jan	0.46	2.08	1.47	1.71	0.49	0.15
Feb	0.40	2.15	1.45	1.72	0.43	0.14
Mar	0.39	1.69	1.42	1.53	0.42	0.15
Apr	0.34	1.83	1.42	1.57	0.37	0.21
May	0.38	1.59	1.06	1.24	0.39	0.20
Jun	0.44	2.60	1.78	2.08	0.47	0.25
Jul	0.53	3.46	2.60	2.88	0.57	0.30
Aug	0.48	3.34	1.88	2.37	0.52	0.27
Sep	0.42	2.10	1.22	1.53	0.44	0.22
Oct	0.33	2.04	0.98	1.37	0.35	0.23
Nov	0.35	1.51	0.97	1.17	0.37	0.22
Dec	0.37	1.76	1.15	1.39	0.39	0.17
Total	0.41	2.16	1.46	1.72	0.43	0.21

See footnote(s) at end of table.

--continued

**Poultry Slaughter: Ante-Mortem Condemnations by Type,
by Month and Annual Total, United States, 2001 (continued)**

Month	Turkeys			Other Poultry	Total Poultry
	Young	Old	Total		
		<i>1,000 Pounds</i>	<i>1,000 Pounds</i>	<i>1,000 Pounds</i>	
Live Weight Condemned					
Jan	2,044	62	2,106	6	19,959
Feb	1,740	46	1,786	1	15,467
Mar	2,604	50	2,654	4	17,605
Apr	1,577	59	1,636	2	14,394
May	1,594	82	1,676	1	17,105
Jun	1,872	63	1,935	1	19,075
Jul	2,427	73	2,500	4	23,117
Aug	2,474	89	2,563	14	22,937
Sep	1,572	40	1,612	4	16,578
Oct	1,679	57	1,736	7	15,837
Nov	1,348	34	1,382	4	14,207
Dec	1,312	54	1,366	1	14,683
Total	22,243	709	22,952	49	210,964
		<i>Percent</i>	<i>Percent</i>	<i>Percent</i>	
Percent of Total Weight Condemned ¹					
Jan	0.36	1.70	0.36	0.73	0.47
Feb	0.34	1.05	0.34	0.17	0.41
Mar	0.45	1.18	0.45	0.49	0.42
Apr	0.29	1.21	0.30	0.25	0.36
May	0.26	1.95	0.27	0.12	0.38
Jun	0.32	1.49	0.33	0.12	0.45
Jul	0.41	1.14	0.42	0.37	0.55
Aug	0.40	1.32	0.41	0.74	0.50
Sep	0.30	0.60	0.30	0.29	0.42
Oct	0.25	0.82	0.25	0.29	0.34
Nov	0.22	0.79	0.22	0.38	0.35
Dec	0.25	0.82	0.26	0.18	0.37
Total	0.32	1.12	0.33	0.36	0.42

¹ Pounds condemned as a percent of live weight pounds inspected.

**Poultry Slaughter: Post-Mortem Condemnations by Type,
by Month and Annual Total, United States, 2001**

	Chickens				Total	Ducks
	Young	Mature		Total		
		Light	Heavy			
		<i>1,000 Pounds</i>	<i>1,000 Pounds</i>	<i>1,000 Pounds</i>		
N.Y. Dressed						
Weight Condemned						
Jan	46,919	2,246	1,504	3,750	50,669	390
Feb	40,014	1,865	1,686	3,551	43,565	312
Mar	46,299	2,226	1,855	4,081	50,380	305
Apr	46,695	1,789	1,870	3,659	50,354	324
May	45,658	1,602	2,294	3,896	49,554	352
Jun	37,918	1,882	1,996	3,878	41,796	316
Jul	38,535	1,417	2,147	3,564	42,099	288
Aug	37,875	1,683	2,128	3,811	41,686	316
Sep	29,278	1,673	1,668	3,341	32,619	322
Oct	34,974	2,110	2,066	4,176	39,150	268
Nov	29,771	1,875	1,659	3,534	33,305	258
Dec	30,910	2,098	1,832	3,930	34,840	240
Total	464,846	22,466	22,705	45,171	510,017	3,691
		<i>Percent</i>	<i>Percent</i>	<i>Percent</i>		
Percent Condemned ¹						
Jan	1.46	8.58	3.89	5.78	1.55	2.81
Feb	1.41	8.13	4.58	5.95	1.51	2.61
Mar	1.46	8.42	4.66	6.16	1.56	2.42
Apr	1.52	7.73	4.73	5.84	1.61	2.42
May	1.32	7.11	5.21	5.85	1.41	2.52
Jun	1.18	7.84	4.78	5.90	1.28	2.40
Jul	1.22	6.96	5.01	5.64	1.31	2.16
Aug	1.10	7.13	4.61	5.46	1.18	2.27
Sep	0.99	7.88	4.24	5.51	1.08	2.60
Oct	0.99	8.27	4.70	6.01	1.09	1.98
Nov	0.97	8.44	4.56	6.03	1.07	2.08
Dec	1.03	8.71	4.92	6.40	1.14	1.99
Total	1.22	7.96	4.67	5.87	1.31	2.36

See footnote(s) at end of table.

--continued

**Poultry Slaughter: Post-Mortem Condemnations by Type,
by Month and Annual Total, United States, 2001 (continued)**

Month	Turkeys			Other Poultry	Total Poultry
	Young	Old	Total		
		<i>1,000 Pounds</i>	<i>1,000 Pounds</i>	<i>1,000 Pounds</i>	
N.Y. Dressed Weight Condemned					
Jan	12,572	241	12,813	8	63,880
Feb	12,146	279	12,425	8	56,310
Mar	13,071	305	13,376	9	64,070
Apr	11,196	357	11,553	7	62,238
May	11,918	335	12,253	9	62,168
Jun	13,356	295	13,651	11	55,774
Jul	10,884	348	11,232	13	53,632
Aug	11,446	370	11,816	20	53,838
Sep	10,558	339	10,897	15	43,853
Oct	12,063	371	12,434	29	51,881
Nov	10,300	219	10,519	12	44,094
Dec	9,391	372	9,763	11	44,854
Total	138,901	3,831	142,732	152	656,592
		<i>Percent</i>	<i>Percent</i>	<i>Percent</i>	
Percent Condemned ¹					
Jan	2.42	7.34	2.46	1.15	1.67
Feb	2.62	7.07	2.66	0.98	1.67
Mar	2.50	7.94	2.54	1.09	1.70
Apr	2.28	8.09	2.34	1.27	1.71
May	2.16	8.85	2.21	1.09	1.52
Jun	2.55	7.81	2.59	1.35	1.46
Jul	2.06	6.05	2.10	1.44	1.42
Aug	2.05	6.06	2.10	1.23	1.31
Sep	2.22	5.59	2.26	1.31	1.24
Oct	1.98	5.97	2.02	1.30	1.23
Nov	1.84	5.64	1.87	1.19	1.20
Dec	1.99	6.23	2.05	1.85	1.26
Total	2.22	6.72	2.26	1.26	1.45

¹ Pounds condemned as a percent of N.Y. dressed weight inspected.

**Young Chickens Slaughtered: Number, Live Weight, Average Live Weight,
Pounds Certified, and Post-Mortem Condemnations, by Month and
Annual Total, by State, 2001**

State and Month	Number Slaughtered	Live Weight	Average Live Weight	Pounds Certified ¹	Post-Mortem Condemnations	
					NY Dressed Weight	Percent ²
	<i>1,000 Head</i>	<i>1,000 Pounds</i>	<i>Pounds</i>	<i>1,000 Pounds</i>	<i>1,000 Pounds</i>	<i>Percent</i>
Alabama						
Jan	80,295	405,756	5.05	299,028	5,769	1.58
Feb	72,598	364,535	5.02	268,768	4,975	1.52
Mar	82,316	416,570	5.06	300,611	6,146	1.64
Apr	78,068	398,331	5.10	291,224	5,807	1.62
May	91,202	454,311	4.98	333,603	6,685	1.63
Jun	85,176	433,091	5.08	320,107	5,074	1.30
Jul	82,079	409,772	4.99	300,640	4,974	1.35
Aug	91,391	459,749	5.03	338,802	6,091	1.47
Sep	77,000	391,909	5.09	286,075	4,473	1.27
Oct	91,220	468,067	5.13	343,345	5,255	1.25
Nov	80,518	413,683	5.14	303,308	4,036	1.08
Dec	77,676	397,060	5.11	291,080	4,550	1.27
Total	989,539	5,012,834	5.07	3,676,591	63,835	1.41
Arkansas						
Jan	102,687	506,396	4.93	362,514	7,892	1.73
Feb	88,464	431,990	4.88	310,005	5,959	1.53
Mar	98,182	472,993	4.82	343,075	6,664	1.57
Apr	95,272	460,072	4.83	332,805	8,137	1.97
May	102,487	503,442	4.91	365,455	6,482	1.43
Jun	97,497	470,463	4.83	341,974	5,863	1.38
Jul	96,882	455,980	4.71	329,512	5,579	1.36
Aug	107,121	508,521	4.75	368,318	5,003	1.09
Sep	89,842	442,995	4.93	322,027	4,039	1.01
Oct	106,481	527,531	4.95	381,439	4,809	1.01
Nov	95,262	472,036	4.96	343,199	4,730	1.11
Dec	89,158	433,972	4.87	318,023	4,546	1.16
Total	1,169,335	5,686,391	4.86	4,118,346	69,703	1.36
Delaware						
Jan	22,425	129,297	5.77	92,813	2,475	2.13
Feb	18,980	109,553	5.77	79,677	2,207	2.24
Mar	21,569	122,701	5.69	88,844	2,653	2.40
Apr	20,427	117,984	5.78	84,693	2,364	2.23
May	23,558	138,075	5.86	99,577	2,346	1.89
Jun	21,938	129,437	5.90	94,455	2,013	1.73
Jul	21,349	126,422	5.92	91,714	1,838	1.62
Aug	23,602	137,332	5.82	100,107	1,840	1.49
Sep	19,653	114,715	5.84	82,932	1,502	1.45
Oct	23,429	135,561	5.79	99,504	1,589	1.30
Nov	20,663	120,471	5.83	87,696	1,550	1.43
Dec	20,266	122,240	6.03	88,428	1,861	1.69
Total	257,859	1,503,788	5.83	1,090,440	24,238	1.79

See footnote(s) at end of table.

--continued

**Young Chickens Slaughtered: Number, Live Weight, Average Live Weight,
Pounds Certified, and Post-Mortem Condemnations, by Month and
Annual Total, by State, 2001 (continued)**

State and Month	Number Slaughtered	Live Weight	Average Live Weight	Pounds Certified ¹	Post-Mortem Condemnations	
					NY Dressed Weight	Percent ²
	<i>1,000 Head</i>	<i>1,000 Pounds</i>	<i>Pounds</i>	<i>1,000 Pounds</i>	<i>1,000 Pounds</i>	<i>Percent</i>
Florida						
Jan	10,219	54,287	5.31	38,781	832	1.70
Feb	8,954	48,239	5.39	34,599	794	1.83
Mar	10,263	55,850	5.44	40,211	860	1.71
Apr	9,926	55,020	5.54	39,567	743	1.50
May	11,186	61,972	5.54	44,744	883	1.58
Jun	10,288	55,859	5.43	40,759	731	1.45
Jul	10,305	55,315	5.37	40,034	705	1.42
Aug	11,713	62,775	5.36	44,395	731	1.29
Sep	9,595	52,344	5.46	36,916	741	1.57
Oct	10,836	60,654	5.60	42,548	798	1.46
Nov	9,977	57,808	5.79	41,057	703	1.35
Dec	10,056	59,133	5.88	35,724	628	1.18
Total	123,318	679,256	5.51	479,335	9,149	1.50
Georgia						
Jan	98,541	492,952	5.00	361,310	6,070	1.37
Feb	89,693	442,868	4.94	328,041	4,968	1.25
Mar	99,260	495,660	4.99	368,109	6,062	1.36
Apr	95,722	473,135	4.94	349,974	6,623	1.56
May	106,300	529,477	4.98	390,588	5,077	1.07
Jun	100,581	496,276	4.93	369,073	4,166	0.93
Jul	104,147	507,099	4.87	372,599	4,303	0.94
Aug	112,436	551,964	4.91	406,768	4,687	0.94
Sep	93,433	460,893	4.93	336,419	3,743	0.90
Oct	110,675	552,303	4.99	392,685	5,275	1.06
Nov	101,289	497,950	4.92	353,988	3,700	0.83
Dec	92,719	465,385	5.02	337,863	3,445	0.82
Total	1,204,796	5,965,962	4.95	4,367,417	58,119	1.08
Kentucky						
Jan	18,277	94,691	5.18	70,830	431	0.51
Feb	18,208	90,891	4.99	67,958	432	0.53
Mar	20,243	104,670	5.17	77,844	620	0.66
Apr	18,970	97,850	5.16	73,817	683	0.78
May	21,431	111,696	5.21	83,070	717	0.71
Jun	20,161	105,462	5.23	78,201	679	0.71
Jul	19,904	104,640	5.26	77,138	867	0.92
Aug	21,674	110,568	5.10	83,270	976	0.98
Sep	18,517	96,834	5.23	72,780	503	0.58
Oct	21,248	113,641	5.35	85,457	788	0.77
Nov	15,014	81,686	5.44	60,248	537	0.73
Dec	17,148	89,054	5.19	66,632	532	0.66
Total	230,795	1,201,683	5.21	897,245	7,765	0.72

See footnote(s) at end of table.

--continued

**Young Chickens Slaughtered: Number, Live Weight, Average Live Weight,
Pounds Certified, and Post-Mortem Condemnations, by Month and
Annual Total, by State, 2001 (continued)**

State and Month	Number Slaughtered	Live Weight	Average Live Weight	Pounds Certified ¹	Post-Mortem Condemnations	
					NY Dressed Weight	Percent ²
	<i>1,000 Head</i>	<i>1,000 Pounds</i>	<i>Pounds</i>	<i>1,000 Pounds</i>	<i>1,000 Pounds</i>	<i>Percent</i>
Louisiana						
Jan	14,549	68,456	4.71	48,213	689	1.12
Feb	12,688	58,731	4.63	41,505	498	0.94
Mar	14,566	68,998	4.74	48,789	611	0.98
Apr	13,965	65,167	4.67	46,518	530	0.90
May	15,644	73,551	4.70	51,211	643	0.97
Jun	15,574	74,461	4.78	53,188	565	0.84
Jul	15,066	69,509	4.61	49,647	597	0.95
Aug	16,790	79,099	4.71	56,584	552	0.78
Sep	14,133	67,301	4.76	48,476	409	0.67
Oct	15,341	71,572	4.67	51,709	388	0.60
Nov	13,396	63,028	4.71	46,324	344	0.61
Dec	13,608	64,807	4.76	45,840	383	0.66
Total	175,320	824,680	4.70	588,004	6,209	0.84
Maryland						
Jan	16,591	77,811	4.69	55,489	1,190	1.70
Feb	14,439	68,946	4.78	48,923	1,042	1.68
Mar	16,692	78,653	4.71	55,422	1,240	1.75
Apr	15,645	72,808	4.65	51,709	1,080	1.65
May	17,327	81,203	4.69	58,742	1,092	1.49
Jun	16,441	77,341	4.70	55,497	926	1.33
Jul	16,808	80,347	4.78	57,120	790	1.09
Aug	18,232	86,064	4.72	61,510	949	1.23
Sep	15,411	71,630	4.65	49,575	783	1.21
Oct	17,429	83,307	4.78	59,345	841	1.12
Nov	15,549	73,000	4.69	50,602	739	1.12
Dec	15,168	71,129	4.69	49,957	800	1.25
Total	195,732	922,239	4.71	653,891	11,472	1.38
Mississippi						
Jan	58,955	288,437	4.89	219,731	2,523	0.97
Feb	53,352	259,531	4.86	199,615	2,368	1.01
Mar	60,787	301,293	4.96	229,045	2,838	1.05
Apr	56,416	284,701	5.05	217,636	2,259	0.88
May	66,735	345,299	5.17	263,495	2,907	0.94
Jun	62,627	312,719	4.99	237,825	2,339	0.83
Jul	63,368	311,885	4.92	238,353	3,584	1.28
Aug	70,431	345,886	4.91	266,293	2,627	0.84
Sep	58,808	298,077	5.07	225,244	1,733	0.65
Oct	70,655	355,169	5.03	275,629	2,114	0.66
Nov	60,515	305,481	5.05	235,862	1,709	0.62
Dec	57,818	296,052	5.12	224,574	1,615	0.61
Total	740,467	3,704,530	5.00	2,833,302	28,616	0.86

See footnote(s) at end of table.

--continued

**Young Chickens Slaughtered: Number, Live Weight, Average Live Weight,
Pounds Certified, and Post-Mortem Condemnations, by Month and
Annual Total, by State, 2001 (continued)**

State and Month	Number Slaughtered	Live Weight	Average Live Weight	Pounds Certified ¹	Post-Mortem Condemnations	
					NY Dressed Weight	Percent ²
	<i>1,000 Head</i>	<i>1,000 Pounds</i>	<i>Pounds</i>	<i>1,000 Pounds</i>	<i>1,000 Pounds</i>	<i>Percent</i>
Missouri						
Jan	31,856	146,176	4.59	107,213	1,738	1.32
Feb	27,202	123,538	4.54	90,098	1,656	1.49
Mar	30,656	138,071	4.50	98,125	1,988	1.60
Apr	28,576	130,703	4.57	95,958	1,885	1.60
May	32,675	149,994	4.59	109,425	2,074	1.54
Jun	30,264	137,935	4.56	100,280	2,016	1.62
Jul	30,629	136,608	4.46	99,242	1,579	1.28
Aug	33,840	147,936	4.37	108,667	1,190	0.89
Sep	27,918	127,186	4.56	93,882	806	0.70
Oct	33,114	154,163	4.66	112,900	996	0.72
Nov	29,945	137,815	4.60	100,260	1,045	0.84
Dec	28,686	133,391	4.65	96,954	1,027	0.86
Total	365,361	1,663,516	4.55	1,213,004	18,000	1.20
North Carolina						
Jan	58,240	335,198	5.76	252,515	5,246	1.74
Feb	52,350	307,409	5.87	227,078	4,447	1.61
Mar	53,786	312,657	5.81	234,226	4,822	1.71
Apr	55,696	331,531	5.95	249,197	4,550	1.52
May	62,086	369,950	5.96	283,779	5,098	1.53
Jun	57,144	333,109	5.83	256,971	3,911	1.30
Jul	58,491	337,192	5.76	262,159	3,708	1.22
Aug	61,276	355,358	5.80	273,180	3,858	1.21
Sep	51,322	300,741	5.86	234,964	3,195	1.18
Oct	59,728	353,644	5.92	274,504	3,541	1.11
Nov	49,341	298,719	6.05	229,159	3,084	1.15
Dec	53,154	320,076	6.02	251,408	3,209	1.11
Total	672,614	3,955,584	5.88	3,029,140	48,669	1.37
Ohio						
Jan	3,913	17,022	4.35	12,151	262	1.71
Feb	2,531	12,661	5.00	9,047	207	1.81
Mar	2,827	15,626	5.53	11,240	258	1.83
Apr	2,683	15,495	5.77	11,280	298	2.14
May	3,046	16,926	5.56	12,238	302	1.98
Jun	3,208	17,373	5.42	12,575	254	1.63
Jul	3,039	15,523	5.11	11,245	215	1.54
Aug	3,462	17,546	5.07	12,606	249	1.58
Sep	2,909	15,344	5.28	11,222	220	1.60
Oct	3,360	18,353	5.46	13,280	262	1.59
Nov	2,770	15,886	5.74	11,462	239	1.67
Dec	2,683	15,749	5.87	11,401	248	1.75
Total	36,431	193,504	5.31	139,747	3,014	1.73

See footnote(s) at end of table.

--continued

**Young Chickens Slaughtered: Number, Live Weight, Average Live Weight,
Pounds Certified, and Post-Mortem Condemnations, by Month and
Annual Total, by State, 2001 (continued)**

State and Month	Number Slaughtered	Live Weight	Average Live Weight	Pounds Certified ¹	Post-Mortem Condemnations	
					NY Dressed Weight	Percent ²
	<i>1,000 Head</i>	<i>1,000 Pounds</i>	<i>Pounds</i>	<i>1,000 Pounds</i>	<i>1,000 Pounds</i>	<i>Percent</i>
Pennsylvania						
Jan	9,420	49,105	5.21	34,062	1,225	2.77
Feb	8,547	44,248	5.18	31,296	1,022	2.57
Mar	9,506	49,650	5.22	34,989	1,110	2.48
Apr	8,880	46,564	5.24	33,259	939	2.24
May	9,864	52,035	5.28	36,627	1,020	2.18
Jun	9,219	47,960	5.20	34,093	975	2.26
Jul	9,277	48,007	5.17	33,751	1,166	2.70
Aug	10,176	51,983	5.11	36,470	991	2.12
Sep	8,581	45,699	5.33	31,789	897	2.18
Oct	10,282	56,113	5.46	39,263	1,170	2.32
Nov	7,927	41,830	5.28	29,409	1,070	2.84
Dec	8,589	45,596	5.31	31,603	1,127	2.75
Total	110,268	578,790	5.25	406,611	12,712	2.44
South Carolina						
Jan	20,069	106,831	5.32	77,897	1,507	1.57
Feb	16,862	89,725	5.32	65,904	1,196	1.48
Mar	20,033	104,307	5.21	75,635	1,471	1.57
Apr	17,527	92,285	5.27	66,747	993	1.20
May	20,792	109,033	5.24	77,645	1,069	1.09
Jun	19,638	101,761	5.18	72,713	842	0.92
Jul	19,835	105,174	5.30	74,553	888	0.94
Aug	20,006	106,746	5.34	78,842	787	0.82
Sep	18,379	95,110	5.17	69,898	637	0.74
Oct	19,614	104,354	5.32	76,253	822	0.88
Nov	16,519	90,401	5.47	66,230	758	0.93
Dec	18,192	100,089	5.50	73,747	790	0.88
Total	227,466	1,205,816	5.30	876,064	11,760	1.08
Tennessee						
Jan	19,175	88,709	4.63	63,732	796	1.00
Feb	18,211	84,618	4.65	60,268	785	1.03
Mar	19,014	88,673	4.66	64,342	723	0.91
Apr	19,018	90,457	4.76	65,072	796	0.98
May	21,767	103,097	4.74	75,169	850	0.92
Jun	20,160	95,758	4.75	68,767	731	0.85
Jul	19,759	91,426	4.63	66,055	991	1.20
Aug	21,595	98,622	4.57	72,925	830	0.94
Sep	18,786	90,898	4.84	64,346	647	0.79
Oct	21,319	101,962	4.78	73,989	769	0.84
Nov	19,703	96,720	4.91	68,396	651	0.75
Dec	17,792	85,474	4.80	61,707	639	0.83
Total	236,299	1,116,414	4.72	804,768	9,208	0.92

See footnote(s) at end of table.

--continued

**Young Chickens Slaughtered: Number, Live Weight, Average Live Weight,
Pounds Certified, and Post-Mortem Condemnations, by Month and
Annual Total, by State, 2001 (continued)**

State and Month	Number Slaughtered	Live Weight	Average Live Weight	Pounds Certified ¹	Post-Mortem Condemnations	
					NY Dressed Weight	Percent ²
	<i>1,000 Head</i>	<i>1,000 Pounds</i>	<i>Pounds</i>	<i>1,000 Pounds</i>	<i>1,000 Pounds</i>	<i>Percent</i>
Texas						
Jan	50,859	244,237	4.80	188,538	2,844	1.29
Feb	44,506	217,453	4.89	167,626	2,529	1.29
Mar	51,645	252,804	4.90	196,970	3,065	1.35
Apr	48,452	232,272	4.79	180,320	3,546	1.70
May	54,149	263,356	4.86	204,662	3,095	1.31
Jun	50,153	238,447	4.75	184,759	2,406	1.12
Jul	51,843	243,612	4.70	190,224	2,962	1.35
Aug	56,209	265,822	4.73	207,038	2,654	1.11
Sep	47,199	229,553	4.86	181,400	1,623	0.79
Oct	55,355	273,971	4.95	218,140	1,865	0.76
Nov	50,061	239,620	4.79	190,034	1,892	0.88
Dec	48,028	236,854	4.93	184,124	2,100	0.98
Total	608,459	2,938,001	4.83	2,293,835	30,581	1.16
Virginia						
Jan	30,415	149,563	4.92	105,165	1,467	1.09
Feb	25,791	125,236	4.86	90,799	1,518	1.35
Mar	29,324	144,762	4.94	104,110	1,595	1.22
Apr	28,767	141,319	4.91	100,434	1,387	1.09
May	32,556	162,134	4.98	117,038	1,512	1.04
Jun	30,235	148,597	4.91	106,264	1,484	1.11
Jul	29,268	141,173	4.82	101,009	1,136	0.89
Aug	33,304	160,372	4.82	115,163	1,164	0.81
Sep	25,830	126,161	4.88	90,118	872	0.77
Oct	31,713	154,896	4.88	112,926	1,000	0.72
Nov	28,024	140,871	5.03	99,965	989	0.78
Dec	26,726	133,188	4.98	97,265	1,118	0.93
Total	351,953	1,728,272	4.91	1,240,256	15,242	0.98

See footnote(s) at end of table.

--continued

**Young Chickens Slaughtered: Number, Live Weight, Average Live Weight,
Pounds Certified, and Post-Mortem Condemnations, by Month and
Annual Total, by State, 2001**

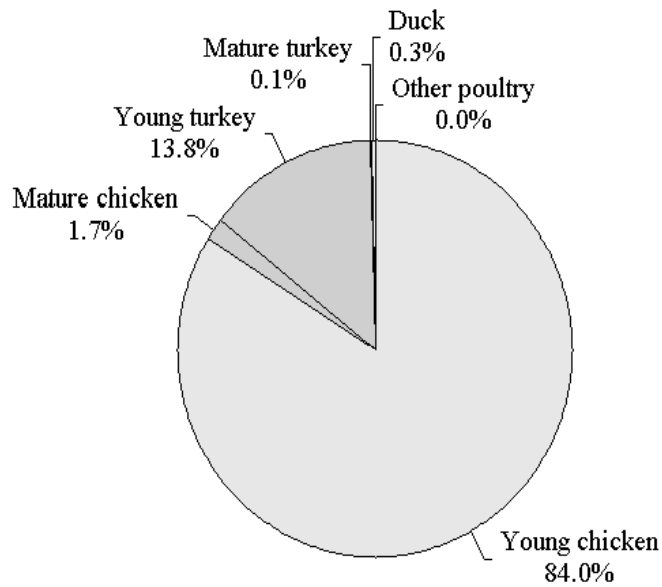
State and Month	Number Slaughtered	Live Weight	Average Live Weight	Pounds Certified ¹	Post-Mortem Condemnations	
					NY Dressed Weight	Percent ²
	<i>1,000 Head</i>	<i>1,000 Pounds</i>	<i>Pounds</i>	<i>1,000 Pounds</i>	<i>1,000 Pounds</i>	<i>Percent</i>
Washington						
Jan	*	*	*	*	*	*
Feb	*	*	*	*	*	*
Mar	*	*	*	*	*	*
Apr	*	*	*	*	*	*
May	*	*	*	*	*	*
Jun	*	*	*	*	*	*
Jul	*	*	*	*	*	*
Aug	*	*	*	*	*	*
Sep	3,943	20,564	5.2	15,307	280	1.51
Oct	*	*	*	*	*	*
Nov	*	*	*	*	*	*
Dec	3,942	21,244	5.4	15,274	285	1.49
Total	*	*	*	*	*	*
Other States						
Jan	64,197	316,812	4.9	232,224	3,963	1.39
Feb	54,004	265,800	4.9	200,959	3,411	1.43
Mar	60,147	291,854	4.9	217,034	3,573	1.36
Apr	61,809	305,507	4.9	225,452	4,075	1.48
May	62,835	307,342	4.9	228,567	3,806	1.38
Jun	58,749	284,321	4.8	209,127	2,943	1.15
Jul	57,342	269,737	4.7	197,809	2,653	1.09
Aug	62,960	294,385	4.7	219,726	2,696	1.02
Sep	52,016	253,407	4.9	185,368	2,175	0.95
Oct	67,737	326,852	4.8	244,255	2,692	0.92
Nov	51,067	248,210	4.9	183,510	1,995	0.89
Dec	49,553	248,212	5.0	183,201	2,007	0.90
Total	702,416	3,412,439	4.9	2,527,232	35,989	1.17

* Included in "Other States" to avoid disclosing individual operations.

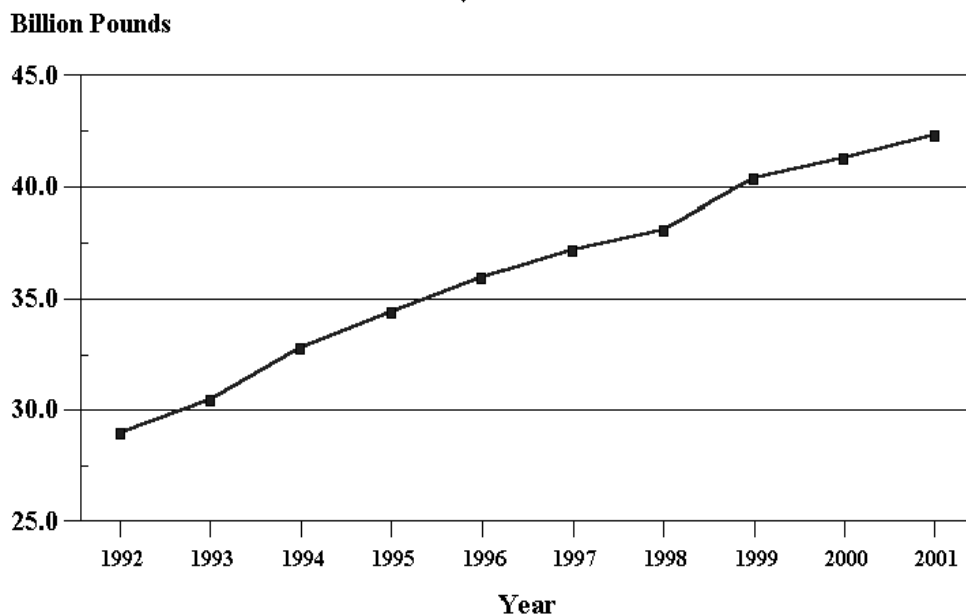
¹ Total chilled and frozen pounds certified, ready-to-cook weights.

² Pounds condemned as a percent of N.Y. dressed weight inspected.

Total Live Weight of Poultry Slaughtered Under Federal Inspection, U.S., 2001 Percent of Total



Total Live Weight of Young Chickens Slaughtered Under Federal Inspection, U.S., 1992-2001



**Young Chickens Slaughtered: Number Condemned Post-Mortem by Cause,
by Month and Annual Total, by State and United States, 2001**

State and Month	Tuber- culosis	Leukosis	Septicemia	Airsac- culitis	Synovitis	Tumors
	<i>Number of Head</i>	<i>Number of Head</i>	<i>Number of Head</i>	<i>Number of Head</i>	<i>Number of Head</i>	<i>Number of Head</i>
Alabama						
Jan		1,114	197,613	155,145	1,409	14,696
Feb		1,345	155,895	105,499	1,374	15,194
Mar		1,978	231,736	102,431	2,014	17,785
Apr		*	155,675	127,070	*	*
May		*	198,900	88,917	*	*
Jun		1,229	193,179	65,864	1,150	7,824
Jul		1,195	147,099	62,879	1,736	5,749
Aug		1,144	152,783	59,447	1,833	6,624
Sep		994	126,608	49,907	1,283	5,781
Oct		1,224	146,181	70,414	873	7,441
Nov		855	122,730	67,992	1,290	6,458
Dec		858	119,482	63,968	2,398	7,072
Total		16,524	1,947,881	1,019,533	19,928	130,633
Arkansas						
Jan		5,295	351,461	167,747	5,698	10,615
Feb		7,799	294,800	152,514	7,704	7,248
Mar		8,254	304,125	166,455	5,078	7,550
Apr		5,391	294,575	168,570	7,443	7,368
May		4,974	301,449	134,062	8,603	8,085
Jun		2,888	270,575	98,083	6,682	4,142
Jul		2,423	253,766	94,790	6,126	3,706
Aug		2,131	241,274	88,729	7,913	3,506
Sep		*	199,508	62,034	4,896	2,973
Oct		2,704	238,512	91,369	6,315	3,107
Nov		*	232,612	117,979	*	*
Dec		3,916	235,743	111,300	*	*
Total		50,783	3,218,400	1,453,632	79,024	64,099
California						
Jan		*	*	*	*	2,825
Feb		*	112,848	*	438	2,637
Mar		5,074	113,863	*	661	3,728
Apr		7,618	*	3,626	771	*
May		5,986	*	4,843	2,213	3,587
Jun		*	*	3,773	644	*
Jul		*	*	*	723	*
Aug		*	*	5,677	299	2,014
Sep		*	*	5,627	296	1,875
Oct		*	*	6,531	*	2,176
Nov		*	*	4,898	205	1,273
Dec		*	*	2,816	377	1,454
Total		*	*	63,995	7,604	30,652

See footnote(s) at end of table.

--continued

**Young Chickens Slaughtered: Number Condemned Post-Mortem by Cause,
by Month and Annual Total, by State and United States, 2001 (continued)**

State and Month	Bruises	Cadaver	Contami- nation	Overscald	Other	Total All Causes
	<i>Number of Head</i>	<i>Number of Head</i>	<i>Number of Head</i>	<i>Number of Head</i>	<i>Number of Head</i>	<i>Number of Head</i>
Alabama						
Jan	8,273	44,244	46,454	10,903	97,302	577,153
Feb	7,791	27,623	45,545	9,583	79,652	449,501
Mar	8,166	35,264	44,655	9,431	91,207	544,667
Apr	7,191	34,216	53,053	12,333	103,696	517,671
May	7,790	34,716	49,257	10,070	99,887	510,265
Jun	7,363	31,962	42,511	8,636	96,343	456,061
Jul	7,076	34,354	46,262	12,159	110,116	428,625
Aug	8,198	37,515	48,742	10,049	111,197	437,532
Sep	6,417	29,578	43,579	8,933	103,952	377,032
Oct	6,770	28,860	48,201	14,298	137,811	462,073
Nov	6,135	26,446	36,371	4,262	99,976	372,515
Dec	5,557	24,810	29,918	5,164	97,003	356,230
Total	86,727	389,588	534,548	115,821	1,228,142	5,489,325
Arkansas						
Jan	10,823	50,819	43,907	4,875	118,643	769,883
Feb	8,702	35,057	34,946	2,749	118,064	669,583
Mar	8,508	30,915	38,729	3,694	105,167	678,475
Apr	8,457	32,163	39,234	5,348	101,229	669,778
May	9,356	34,176	41,467	5,607	92,157	639,936
Jun	8,338	34,440	41,760	3,342	95,032	565,282
Jul	9,030	41,045	41,859	9,044	96,839	558,628
Aug	8,798	39,556	43,623	5,618	68,670	509,818
Sep	6,703	30,424	31,756	*	53,205	403,006
Oct	7,746	39,710	38,554	4,703	57,572	490,292
Nov	7,226	32,733	32,077	*	59,614	496,961
Dec	6,835	35,448	29,046	3,562	55,878	491,418
Total	100,522	436,486	456,958	61,086	1,022,070	6,943,060
California						
Jan	213	*	3,001	*	*	179,517
Feb	244	*	2,160	*	*	147,574
Mar	351	*	2,223	*	15,202	152,973
Apr	294	*	2,461	*	22,847	*
May	394	*	2,736	864	14,138	154,041
Jun	369	*	2,834	*	13,820	138,770
Jul	206	*	2,062	*	16,198	140,922
Aug	322	*	2,646	*	27,430	141,955
Sep	370	*	2,261	1,405	20,064	125,151
Oct	355	*	3,074	*	12,713	149,028
Nov	258	*	1,810	*	10,099	*
Dec	526	*	1,862	*	12,436	123,065
Total	3,902	*	29,130	*	188,561	1,756,815

See footnote(s) at end of table.

--continued

**Young Chickens Slaughtered: Number Condemned Post-Mortem by Cause,
by Month and Annual Total, by State and United States, 2001 (continued)**

State and Month	Tuber- culosis	Leukosis	Septicemia	Airsac- culitis	Synovitis	Tumors
	<i>Number of Head</i>	<i>Number of Head</i>	<i>Number of Head</i>	<i>Number of Head</i>	<i>Number of Head</i>	<i>Number of Head</i>
Delaware						
Jan		*	122,332	73,059	*	*
Feb		7,332	100,948	56,091	*	*
Mar		13,593	115,164	74,966	*	*
Apr		12,940	108,349	55,848	*	*
May		18,270	108,185	46,477	75	*
Jul		6,898	91,210	25,754	*	7,863
Aug		2,895	92,152	23,550	*	7,054
Sep		1,431	81,244	19,448	51	6,768
Oct		1,483	88,569	22,132	*	6,855
Nov		1,543	85,777	27,052	46	4,975
Dec		*	95,047	35,700	104	4,248
Total		86,901	1,181,902	492,955	*	*
Florida						
Jan		*	*	*	*	*
Feb		*	*	*	*	*
Mar		234	*	*	*	*
Apr		183	*	*	*	*
May		*	*	*	*	*
Jun		*	*	*	*	*
Jul		234	*	*	*	*
Aug		*	*	*	1,406	*
Sep		132	*	*	*	*
Oct		247	*	*	*	*
Nov		133	*	*	*	*
Dec		110	*	*	*	*
Total		4,355	*	*	*	*
Georgia						
Jan		1,271	142,446	226,847	801	21,188
Feb		1,188	116,907	162,590	473	19,350
Mar		1,168	131,523	206,285	684	20,960
Apr		956	119,628	157,811	649	18,048
May		1,129	125,854	139,771	451	17,473
Jul		1,121	119,423	79,887	402	7,593
Aug		1,171	122,031	78,985	415	7,715
Sep		1,467	100,923	67,907	371	5,699
Oct		783	116,161	82,544	506	6,254
Nov		1,102	103,938	84,595	403	5,113
Dec		1,336	93,379	82,168	413	4,124
Total		13,563	1,404,189	1,460,408	6,123	143,273

See footnote(s) at end of table.

--continued

**Young Chickens Slaughtered: Number Condemned Post-Mortem by Cause,
by Month and Annual Total, by State and United States, 2001 (continued)**

State and Month	Bruises	Cadaver	Contami- nation	Overscald	Other	Total All Causes
	<i>Number of Head</i>	<i>Number of Head</i>	<i>Number of Head</i>	<i>Number of Head</i>	<i>Number of Head</i>	<i>Number of Head</i>
Delaware						
Jan	3,787	13,705	11,276	2,871	35,895	292,545
Feb	2,598	8,236	8,872	*	30,231	241,458
Mar	2,898	8,649	10,523	*	39,465	300,405
Apr	2,418	10,210	11,143	1,041	33,158	260,701
May	2,608	9,554	11,521	*	27,248	249,734
Jun	2,334	11,345	10,004	4,191	19,950	197,134
Jul	2,566	11,479	12,424	*	18,880	184,305
Aug	2,973	10,807	10,903	*	15,674	174,078
Sep	2,341	11,123	8,356	7,050	13,600	151,412
Oct	2,439	11,540	9,127	*	16,731	161,690
Nov	2,271	8,569	11,227	1,578	20,787	163,825
Dec	2,409	12,979	10,658	*	22,292	187,455
Total	31,642	128,196	126,034	*	293,911	2,564,742
Florida						
Jan	1,467	4,141	3,558	*	*	104,811
Feb	1,086	3,007	3,288	*	*	89,887
Mar	1,144	3,565	3,598	*	16,754	91,816
Apr	*	3,118	*	1,067	13,501	77,711
May	*	4,114	3,528	*	11,727	79,222
Jun	1,119	3,523	3,824	1,185	9,957	56,707
Jul	1,065	3,632	4,042	*	11,100	*
Aug	1,207	4,719	4,565	1,596	11,754	65,837
Sep	953	4,435	3,341	364	8,202	52,987
Oct	*	5,295	4,058	1,935	12,213	76,666
Nov	*	4,877	3,417	*	8,402	61,588
Dec	773	4,135	*	*	*	*
Total	13,375	48,561	43,972	14,702	149,918	867,314
Georgia						
Jan	9,470	44,736	32,656	4,729	183,285	667,429
Feb	8,565	36,931	26,645	6,695	153,147	532,491
Mar	8,425	48,816	30,862	4,530	192,687	645,940
Apr	7,444	35,750	27,589	4,866	161,056	533,797
May	8,291	37,547	31,953	7,839	155,093	525,401
Jul	7,100	35,837	24,061	5,303	118,864	399,591
Aug	7,601	35,359	27,008	6,820	121,991	409,096
Sep	6,016	34,258	22,536	6,294	99,766	345,237
Oct	7,045	37,295	25,279	7,049	116,081	398,997
Nov	6,092	32,237	26,316	6,589	120,382	386,767
Dec	5,719	34,187	22,645	4,572	116,554	365,097
Total	89,100	446,174	322,193	71,482	1,662,267	5,618,772

See footnote(s) at end of table.

--continued

**Young Chickens Slaughtered: Number Condemned Post-Mortem by Cause,
by Month and Annual Total, by State and United States, 2001 (continued)**

State and Month	Tuber- culosis	Leukosis	Septicemia	Airsac- culitis	Synovitis	Tumors
	<i>Number of Head</i>	<i>Number of Head</i>	<i>Number of Head</i>	<i>Number of Head</i>	<i>Number of Head</i>	<i>Number of Head</i>
Indiana						
Jan		*	*	*	*	*
Feb		*	*	*	*	*
Mar		*	*	*	*	*
Apr		*	*	*	*	122
May		*	*	*	*	138
Jun		*	*	*	*	*
Jul		*	*	*	*	*
Aug		*	*	*	*	*
Sep		*	*	*	*	*
Oct		*	*	*	*	*
Nov		*	*	*	*	*
Dec		*	*	*	*	*
Total		*	*	*	*	*
Kentucky						
Jan		*	25,050	*	122	*
Feb		*	*	*	98	*
Mar		*	*	14,307	255	5,319
Apr		*	32,665	*	368	4,597
May		*	35,240	*	*	4,560
Jun		*	33,757	*	282	2,299
Jul		*	34,824	*	*	2,319
Aug		*	35,648	*	251	2,339
Sep		*	27,940	*	*	1,717
Oct		*	30,340	*	*	1,873
Nov		155	19,641	*	*	1,414
Dec		*	22,114	*	226	*
Total		*	357,535	*	3,461	37,050
Louisiana						
Jan		*	23,663	*	*	718
Feb		105	18,010	20,993	143	812
Mar		*	23,863	*	200	1,161
Apr		258	20,154	10,477	253	1,374
May		393	23,468	*	295	1,547
Jun		*	24,155	*	145	1,318
Jul		*	23,104	*	*	1,081
Aug		*	25,381	11,272	*	1,114
Sep		65	20,227	10,794	*	849
Oct		*	16,688	12,415	*	855
Nov		63	14,001	11,632	*	880
Dec		*	15,725	10,914	*	744
Total		*	248,439	209,459	*	12,453

See footnote(s) at end of table.

--continued

**Young Chickens Slaughtered: Number Condemned Post-Mortem by Cause,
by Month and Annual Total, by State and United States, 2001 (continued)**

State and Month	Bruises	Cadaver	Contami- nation	Overscald	Other	Total All Causes
	<i>Number of Head</i>	<i>Number of Head</i>	<i>Number of Head</i>	<i>Number of Head</i>	<i>Number of Head</i>	<i>Number of Head</i>
Indiana						
Jan	*	*	561	*	*	*
Feb	*	*	*	*	*	*
Mar	*	*	*	*	*	*
Apr	*	*	*	*	*	*
May	*	512	501	*	*	*
Jun	*	*	376	*	*	*
Jul	*	*	*	*	*	*
Aug	*	*	*	*	*	*
Sep	*	*	*	*	*	*
Oct	*	*	336	*	*	17,365
Nov	*	*	240	*	*	*
Dec	*	*	148	*	*	*
Total	*	*	*	*	*	*
Kentucky						
Jan	313	11,287	3,904	*	7,159	61,501
Feb	210	10,231	4,912	1,503	9,342	63,774
Mar	631	10,690	5,766	*	13,273	89,034
Apr	466	9,233	5,249	*	10,291	86,257
May	485	10,007	5,744	*	8,720	87,885
Jun	316	12,134	6,204	*	6,929	83,835
Jul	*	10,590	6,472	1,176	7,412	83,817
Aug	*	*	6,342	*	6,819	86,585
Sep	*	9,289	5,240	1,606	6,758	58,920
Oct	*	12,530	6,267	*	11,642	92,956
Nov	276	*	3,559	1,255	5,945	54,584
Dec	256	6,992	4,224	*	4,661	56,857
Total	4,982	122,420	63,883	20,524	98,951	906,005
Louisiana						
Jan	744	4,157	4,696	*	*	85,192
Feb	682	4,386	4,507	112	4,563	54,313
Mar	728	4,331	4,647	214	*	67,859
Apr	731	3,282	5,015	261	9,067	50,872
May	796	4,145	5,590	*	12,261	68,971
Jun	685	4,817	4,585	542	7,382	61,431
Jul	682	5,926	3,550	386	8,750	62,038
Aug	729	4,641	4,425	553	7,263	56,159
Sep	*	3,850	*	98	*	45,592
Oct	*	*	*	*	*	40,368
Nov	609	3,623	3,213	253	*	38,598
Dec	759	*	3,153	*	*	43,771
Total	8,394	50,775	49,548	5,893	84,806	675,164

See footnote(s) at end of table.

--continued

**Young Chickens Slaughtered: Number Condemned Post-Mortem by Cause,
by Month and Annual Total, by State and United States, 2001 (continued)**

State and Month	Tuber- culosis	Leukosis	Septicemia	Airsac- culitis	Synovitis	Tumors
	<i>Number of Head</i>	<i>Number of Head</i>	<i>Number of Head</i>	<i>Number of Head</i>	<i>Number of Head</i>	<i>Number of Head</i>
Maryland						
Jan		*	63,825	36,669	*	12,596
Feb		26,590	52,734	38,901	*	10,913
Mar		*	64,052	44,817	214	*
Apr		22,239	56,260	35,184	*	11,474
May		25,013	61,673	30,275	*	10,606
Jun		16,271	56,420	26,669	33	5,463
Jul		9,661	55,199	17,005	*	4,066
Aug		4,690	55,822	13,290	50	4,151
Sep		2,109	43,505	12,827	42	*
Oct		2,446	46,117	16,065	*	*
Nov		*	46,545	20,793	*	*
Dec		*	50,034	26,418	64	*
Total		171,424	652,186	318,913	*	87,772
Mississippi						
Jan		826	102,306	46,795	319	2,871
Feb		1,585	78,965	63,677	374	3,165
Mar		849	92,426	38,281	536	3,831
Apr		1,013	78,149	38,820	389	3,357
May		1,109	93,706	33,221	779	3,724
Jun		670	84,820	26,042	462	2,533
Jul		*	81,321	19,820	*	1,826
Aug		*	90,023	24,370	*	1,678
Sep		487	66,373	17,975	706	1,219
Oct		*	71,564	24,876	522	1,525
Nov		503	56,860	21,712	*	1,538
Dec		*	56,967	21,027	*	1,392
Total		215,193	953,480	376,616	6,953	28,659
Missouri						
Jan		3,417	108,037	57,960	2,101	*
Feb		3,204	100,546	74,662	2,564	*
Mar		3,270	*	80,789	3,854	8,932
Apr		2,715	107,739	73,809	1,846	*
May		3,052	118,388	63,749	2,737	*
Jun		2,227	98,426	59,558	1,767	*
Jul		1,920	89,309	38,208	1,865	*
Aug		2,166	79,142	35,662	1,851	3,249
Sep		*	*	15,305	*	2,475
Oct		2,233	73,911	21,113	1,443	4,037
Nov		2,343	71,346	17,077	1,515	3,575
Dec		*	69,394	24,737	*	4,394
Total		30,832	1,902,772	562,629	23,862	61,527

See footnote(s) at end of table.

--continued

**Young Chickens Slaughtered: Number Condemned Post-Mortem by Cause,
by Month and Annual Total, by State and United States, 2001 (continued)**

State and Month	Bruises	Cadaver	Contami- nation	Overscald	Other	Total All Causes
	<i>Number of Head</i>	<i>Number of Head</i>	<i>Number of Head</i>	<i>Number of Head</i>	<i>Number of Head</i>	<i>Number of Head</i>
Maryland						
Jan	2,319	*	*	1,135	24,819	206,475
Feb	1,860	12,864	*	2,073	21,114	189,399
Mar	2,082	*	*	2,653	28,356	233,969
Apr	1,867	19,242	*	1,585	27,344	198,869
May	*	*	*	939	31,113	213,336
Jun	1,704	*	*	1,320	23,757	186,004
Jul	1,656	*	*	1,338	22,991	165,604
Aug	1,837	16,829	*	*	19,390	156,923
Sep	1,381	12,409	*	1,097	17,635	117,961
Oct	2,125	15,544	*	1,277	17,848	131,692
Nov	*	*	*	995	19,352	137,245
Dec	*	*	*	*	24,057	157,135
Total	23,246	*	*	19,955	277,776	2,094,612
Mississippi						
Jan	3,608	17,749	9,819	1,274	76,841	262,408
Feb	3,458	14,101	9,841	1,120	76,616	252,902
Mar	3,860	16,824	10,866	665	74,105	242,243
Apr	3,235	14,161	12,983	756	55,824	208,687
May	3,741	13,163	15,895	1,429	70,070	236,837
Jun	3,531	11,214	11,238	1,001	77,529	219,040
Jul	3,817	12,582	10,635	863	77,092	415,177
Aug	3,744	13,248	14,495	1,124	80,389	230,231
Sep	3,476	10,983	*	*	37,418	151,428
Oct	3,745	13,047	*	1,573	53,960	184,917
Nov	2,888	10,632	9,228	*	35,766	140,280
Dec	2,700	10,987	10,005	717	36,209	141,484
Total	41,803	158,691	141,245	11,175	751,819	2,685,634
Missouri						
Jan	2,477	19,216	16,084	*	40,452	257,407
Feb	2,320	12,755	14,491	*	59,916	276,809
Mar	2,170	15,606	16,450	*	*	*
Apr	2,293	17,248	14,933	931	*	377,160
May	2,427	19,467	18,392	2,243	*	358,586
Jun	2,359	14,408	16,805	1,110	*	334,993
Jul	2,506	11,995	15,926	2,512	*	259,413
Aug	2,290	14,997	12,390	444	45,520	197,711
Sep	1,317	7,528	7,344	*	17,726	*
Oct	1,640	12,673	9,265	998	21,062	148,375
Nov	1,395	10,106	7,975	782	20,193	136,307
Dec	1,713	8,056	8,043	*	22,044	143,577
Total	24,907	164,055	158,098	14,642	843,601	3,786,925

See footnote(s) at end of table.

--continued

**Young Chickens Slaughtered: Number Condemned Post-Mortem by Cause,
by Month and Annual Total, by State and United States, 2001 (continued)**

State and Month	Tuber- culosis	Leukosis	Septicemia	Airsac- culitis	Synovitis	Tumors
	<i>Number of Head</i>	<i>Number of Head</i>	<i>Number of Head</i>	<i>Number of Head</i>	<i>Number of Head</i>	<i>Number of Head</i>
New Jersey						
Jan		*	*	*	*	*
Feb		*	*	*	*	*
Mar		*	*	*	*	*
Apr		*	*	*	*	*
May		*	*	*	*	*
Jun		9	*	*	*	*
Jul		*	1,412	*	*	*
Aug		*	*	*	*	*
Sep		*	*	*	14	256
Oct		21	*	*	*	*
Nov		*	*	*	*	*
Dec		*	*	*	*	*
Total		*	*	*	*	*
New York						
Jan		*	*	1,459	150	*
Feb		*	*	1,179	139	*
Mar		*	*	1,677	156	*
Apr		*	*	1,224	200	*
May		*	*	*	*	*
Jun		*	*	*	*	*
Jul		*	2,886	*	126	101
Aug		*	*	*	191	*
Sep		316	*	*	197	85
Oct		*	*	*	337	*
Nov		304	*	*	257	*
Dec		475	*	1,560	370	*
Total		*	*	*	2,459	*
North Carolina						
Jan		4,002	156,835	154,014	375	48,628
Feb		2,523	178,363	113,932	339	56,271
Mar		*	146,418	118,473	*	64,591
Apr		*	140,972	86,496	*	60,997
May		3,872	144,769	80,244	411	57,951
Jun		2,069	126,089	46,920	139	20,830
Jul		1,415	120,198	43,471	361	14,089
Aug		1,685	133,634	45,910	478	12,498
Sep		877	108,833	36,303	189	12,592
Oct		*	115,019	45,940	*	15,313
Nov		*	101,174	46,375	*	13,540
Dec		1,215	109,594	46,589	52	15,019
Total		27,974	1,581,898	864,667	3,760	392,319

See footnote(s) at end of table.

--continued

**Young Chickens Slaughtered: Number Condemned Post-Mortem by Cause,
by Month and Annual Total, by State and United States, 2001 (continued)**

State and Month	Bruises	Cadaver	Contami- nation	Overscald	Other	Total All Causes
	<i>Number of Head</i>	<i>Number of Head</i>	<i>Number of Head</i>	<i>Number of Head</i>	<i>Number of Head</i>	<i>Number of Head</i>
New Jersey						
Jan	*	*	*	*	*	*
Feb	*	*	*	*	*	*
Mar	*	*	*	*	*	*
Apr	*	*	*	2	*	*
May	*	*	*	*	*	*
Jun	*	*	*	*	*	*
Jul	*	*	3,196	*	*	7,709
Aug	*	*	*	*	*	*
Sep	*	*	*	*	*	*
Oct	587	*	5,428	*	*	*
Nov	*	*	4,489	*	*	9,980
Dec	*	*	*	*	*	*
Total	*	*	*	*	*	*
New York						
Jan	878	*	3,489	301	1,193	12,457
Feb	689	*	3,231	237	1,062	10,747
Mar	780	*	3,163	209	*	12,466
Apr	646	*	3,142	95	*	10,872
May	752	*	*	144	*	*
Jun	611	*	*	208	*	12,549
Jul	585	*	*	196	*	12,112
Aug	843	388	*	208	*	12,702
Sep	557	*	*	188	*	*
Oct	691	*	*	186	*	*
Nov	538	133	3,128	222	1,739	9,286
Dec	542	*	3,277	416	1,466	11,583
Total	8,112	*	50,354	2,610	*	145,043
North Carolina						
Jan	7,629	51,621	34,671	6,967	98,199	562,941
Feb	5,955	36,350	27,613	5,377	83,059	509,782
Mar	7,133	35,655	27,456	5,897	82,485	493,139
Apr	5,907	38,316	29,393	6,043	80,199	451,328
May	6,939	40,819	38,624	11,284	89,890	474,803
Jun	6,702	35,317	30,314	8,890	60,078	337,348
Jul	5,838	35,082	32,091	15,270	65,280	333,095
Aug	6,074	36,797	31,873	10,919	57,179	337,047
Sep	4,899	31,068	24,988	12,025	61,066	292,840
Oct	5,454	27,765	24,577	6,542	57,314	300,353
Nov	4,745	25,445	17,317	7,642	53,756	271,261
Dec	4,343	27,652	20,651	4,815	49,450	279,380
Total	71,618	421,887	339,568	101,671	837,955	4,643,317

See footnote(s) at end of table.

--continued

**Young Chickens Slaughtered: Number Condemned Post-Mortem by Cause,
by Month and Annual Total, by State and United States, 2001 (continued)**

State and Month	Tuberculosis	Leukosis	Septicemia	Airsacculitis	Synovitis	Tumors
	<i>Number of Head</i>	<i>Number of Head</i>	<i>Number of Head</i>	<i>Number of Head</i>	<i>Number of Head</i>	<i>Number of Head</i>
Ohio						
Jan		*	15,892	2,439	*	*
Feb		*	12,687	*	45	*
Mar		*	16,791	1,926	137	*
Apr		*	14,220	1,499	*	*
May		38	17,053	1,650	*	*
Jun		39	15,563	1,765	*	*
Jul		35	13,543	*	53	*
Aug		18	12,247	*	*	*
Sep		*	12,782	*	73	*
Oct		22	15,614	*	55	*
Nov		*	11,893	1,134	*	*
Dec		*	12,821	1,335	*	*
Total		*	171,106	17,343	*	*
Pennsylvania						
Jan		*	45,957	30,322	369	*
Feb		*	37,075	23,925	287	*
Mar		1,484	39,077	28,441	454	*
Apr		664	33,396	19,791	380	2,086
May		850	32,407	18,730	308	2,685
Jun		711	28,291	12,084	168	1,738
Jul		876	28,417	8,977	*	1,190
Aug		266	27,939	9,475	215	964
Sep		*	22,706	7,751	*	771
Oct		792	34,048	14,205	*	965
Nov		775	29,837	20,823	*	954
Dec		343	34,027	29,055	317	*
Total		11,368	393,177	223,579	3,709	19,556
South Carolina						
Jan		*	26,691	80,996	*	*
Feb		400	19,319	44,390	*	*
Mar		877	19,668	43,042	132	*
Apr		*	17,892	36,747	*	*
May		588	20,342	30,398	*	*
Jun		441	18,703	12,243	*	*
Jul		549	19,746	13,917	*	*
Aug		180	19,614	*	*	*
Sep		99	*	*	*	*
Oct		158	19,718	*	*	*
Nov		122	17,187	*	*	1,264
Dec		112	*	24,539	37	1,020
Total		4,629	235,779	342,227	*	*

See footnote(s) at end of table.

--continued

**Young Chickens Slaughtered: Number Condemned Post-Mortem by Cause,
by Month and Annual Total, by State and United States, 2001 (continued)**

State and Month	Bruises	Cadaver	Contami- nation	Overscald	Other	Total All Causes
	<i>Number of Head</i>	<i>Number of Head</i>	<i>Number of Head</i>	<i>Number of Head</i>	<i>Number of Head</i>	<i>Number of Head</i>
Ohio						
Jan	371	5,834	*	*	11,971	40,868
Feb	252	3,612	*	*	7,439	29,064
Mar	273	2,389	*	*	*	36,958
Apr	262	4,417	*	*	*	27,874
May	276	3,624	*	*	*	30,484
Jun	290	4,448	*	*	*	28,575
Jul	282	2,525	*	*	*	25,671
Aug	247	*	*	*	*	23,057
Sep	168	*	*	*	*	24,243
Oct	*	2,073	*	*	*	27,089
Nov	*	*	*	*	*	22,138
Dec	240	*	*	*	*	24,704
Total	3,105	38,146	*	*	*	340,725
Pennsylvania						
Jan	1,759	7,409	8,670	69	42,713	141,323
Feb	1,628	5,733	7,217	71	41,448	122,764
Mar	1,771	5,613	8,652	*	37,705	126,364
Apr	1,655	4,801	7,928	255	37,039	107,995
May	1,816	3,984	7,865	156	35,575	104,376
Jun	2,030	3,740	8,466	396	34,857	92,481
Jul	1,735	4,295	6,336	*	35,479	88,038
Aug	2,002	5,125	7,921	291	47,016	101,214
Sep	1,645	5,226	4,266	494	38,790	82,141
Oct	1,724	7,307	5,274	*	50,513	115,667
Nov	1,456	4,546	5,206	*	42,608	107,267
Dec	1,661	4,749	5,373	*	50,226	126,980
Total	20,882	62,528	83,174	4,668	493,969	1,316,610
South Carolina						
Jan	2,163	*	9,905	4,409	21,326	167,778
Feb	1,562	*	10,763	*	13,747	113,627
Mar	2,027	7,462	9,288	*	15,464	115,596
Apr	*	2,778	7,373	*	12,141	90,700
May	*	4,020	8,302	*	12,974	94,257
Jun	*	2,602	6,539	*	9,159	62,739
Jul	1,840	3,226	5,865	4,778	9,202	62,266
Aug	*	3,284	*	5,747	7,783	62,029
Sep	*	3,001	4,835	4,294	11,930	52,496
Oct	*	*	*	1,940	9,368	59,904
Nov	*	4,393	2,825	3,357	9,645	61,939
Dec	*	4,413	2,500	2,516	8,534	66,516
Total	*	66,306	82,935	45,846	141,273	1,009,847

See footnote(s) at end of table.

--continued

**Young Chickens Slaughtered: Number Condemned Post-Mortem by Cause,
by Month and Annual Total, by State and United States, 2001 (continued)**

State and Month	Tuber- culosis	Leukosis	Septicemia	Airsac- culitis	Synovitis	Tumors
	<i>Number of Head</i>	<i>Number of Head</i>	<i>Number of Head</i>	<i>Number of Head</i>	<i>Number of Head</i>	<i>Number of Head</i>
Tennessee						
Jan		340	50,715	22,716	452	1,312
Feb		*	46,819	25,873	429	1,980
Mar		186	44,892	18,924	475	2,179
Apr		927	46,762	17,747	*	2,457
May		*	49,053	17,819	506	2,000
Jun		250	43,730	11,777	629	1,529
Jul		302	40,043	11,457	791	1,184
Aug		224	47,408	18,559	677	1,181
Sep		524	38,334	10,522	437	862
Oct		*	47,570	17,531	351	901
Nov		*	43,680	15,716	400	835
Dec		*	38,988	17,445	*	714
Total		3,999	537,994	206,086	6,359	17,134
Texas						
Jan		460	189,927	75,226	642	5,335
Feb		680	166,999	68,994	820	4,689
Mar		*	198,079	85,768	857	5,052
Apr		*	166,157	63,638	*	4,327
May		619	172,430	57,914	800	4,414
Jun		720	137,652	55,285	558	3,037
Jul		*	150,102	68,292	*	2,395
Aug		444	150,250	65,346	*	*
Sep		205	84,756	31,336	*	2,044
Oct		209	97,750	45,695	*	1,706
Nov		*	101,096	42,514	323	1,897
Dec		*	112,235	61,582	272	*
Total		6,361	1,727,433	721,590	7,115	40,701
Virginia						
Jan		2,117	70,457	59,198	*	*
Feb		2,609	59,523	44,673	*	*
Mar		*	73,899	50,266	*	*
Apr		*	62,848	43,825	*	*
May		*	81,426	42,282	39	*
Jun		*	62,442	22,923	*	*
Jul		*	60,977	22,195	*	*
Aug		*	63,666	17,058	64	*
Sep		*	48,506	13,785	78	*
Oct		686	54,149	15,617	45	*
Nov		*	51,055	23,319	57	*
Dec		*	58,950	34,461	52	*
Total		*	747,898	389,602	*	*

See footnote(s) at end of table.

--continued

**Young Chickens Slaughtered: Number Condemned Post-Mortem by Cause,
by Month and Annual Total, by State and United States, 2001 (continued)**

State and Month	Bruises	Cadaver	Contami- nation	Overscald	Other	Total All Causes
	<i>Number of Head</i>	<i>Number of Head</i>	<i>Number of Head</i>	<i>Number of Head</i>	<i>Number of Head</i>	<i>Number of Head</i>
Tennessee						
Jan	3,300	11,437	9,687	*	*	128,641
Feb	2,693	8,210	8,806	1,917	*	129,575
Mar	2,786	8,026	8,568	*	*	103,275
Apr	2,639	10,387	7,214	*	21,576	112,507
May	2,805	9,622	8,185	928	*	112,809
Jun	2,207	12,219	8,647	441	11,767	93,196
Jul	1,628	10,113	8,820	1,765	11,385	87,488
Aug	2,218	9,313	9,319	2,138	17,106	108,143
Sep	1,672	8,801	4,967	1,251	10,376	77,746
Oct	1,965	10,386	6,123	*	15,250	100,923
Nov	1,453	7,677	5,185	*	9,456	85,912
Dec	1,789	7,996	4,920	*	10,509	88,246
Total	27,155	114,187	90,441	22,549	202,557	1,228,461
Texas						
Jan	1,967	16,117	14,594	1,357	20,765	326,390
Feb	1,876	14,562	14,176	528	16,752	290,076
Mar	1,992	16,733	16,345	*	23,944	350,253
Apr	1,865	12,882	15,682	1,848	13,141	280,921
May	1,999	20,931	17,932	1,669	15,754	294,462
Jun	1,823	16,149	16,191	1,124	12,685	245,224
Jul	1,969	12,548	21,149	1,051	12,523	271,960
Aug	1,904	12,497	19,253	*	12,654	269,868
Sep	1,297	8,754	*	*	8,732	154,581
Oct	1,437	10,859	*	656	10,557	187,882
Nov	1,141	11,023	*	2,495	10,794	188,836
Dec	1,257	10,205	*	1,253	12,994	215,813
Total	20,527	163,260	200,459	17,525	171,295	3,076,266
Virginia						
Jan	2,296	9,900	*	688	19,923	192,247
Feb	1,679	6,979	*	*	18,790	163,946
Mar	1,872	8,806	*	*	21,959	196,034
Apr	1,819	9,632	*	997	18,204	167,499
May	1,996	11,999	*	*	23,540	195,788
Jun	1,879	9,760	*	1,937	16,518	137,246
Jul	1,965	12,149	*	*	21,833	138,833
Aug	2,198	11,676	*	2,726	16,524	133,365
Sep	1,535	8,588	*	*	13,468	103,992
Oct	1,743	10,921	*	2,062	13,374	114,524
Nov	1,459	7,948	*	1,413	16,160	116,295
Dec	1,472	7,160	*	*	12,948	132,801
Total	21,913	115,518	*	18,502	213,241	1,792,570

See footnote(s) at end of table.

--continued

**Young Chickens Slaughtered: Number Condemned Post-Mortem by Cause,
by Month and Annual Total, by State and United States, 2001 (continued)**

State and Month	Tuber- culosis	Leukosis	Septicemia	Airsac- culitis	Synovitis	Tumors
	<i>Number of Head</i>	<i>Number of Head</i>	<i>Number of Head</i>	<i>Number of Head</i>	<i>Number of Head</i>	<i>Number of Head</i>
Washington						
Jan		*	*	*	*	*
Feb		*	*	*	*	*
Mar		*	*	*	*	*
Apr		*	*	*	*	*
May		*	*	1,291	*	*
Jun		*	21,165	*	*	*
Jul		*	18,958	*	*	*
Aug		*	*	*	*	*
Sep		*	*	*	*	*
Oct		*	21,148	1,549	*	189
Nov		*	*	*	*	132
Dec		*	*	1,635	*	*
Total		*	*	*	*	*
Other States						
Jan		42,171	302,724	102,556	6,345	81,063
Feb		11,808	172,188	60,585	3,426	83,198
Mar		44,372	1,144,488	72,832	5,145	108,549
Apr		12,941	295,694	53,990	7,863	102,324
May		11,903	278,765	76,394	6,150	88,270
Jun		18,264	192,334	71,886	3,084	35,041
Jul		220,000	199,115	70,711	5,034	17,536
Aug		8,959	207,168	54,564	4,380	16,350
Sep		10,801	242,085	36,935	4,557	12,450
Oct		10,592	192,620	67,927	6,302	18,171
Nov		12,907	162,489	60,493	9,801	15,162
Dec		19,814	195,097	29,986	12,566	19,358
Total		424,532	3,584,767	758,859	74,653	597,472
United States						
Jan		61,013	1,995,931	1,293,148	18,783	201,847
Feb		67,168	1,724,626	1,058,478	18,653	205,457
Mar		81,339	2,760,064	1,149,680	20,852	249,637
Apr		67,845	1,751,135	996,172	20,162	218,531
May		77,796	1,863,108	868,037	23,367	205,040
Jun		57,798	1,612,202	638,768	16,298	95,510
Jul		246,629	1,550,652	577,363	17,217	70,698
Aug		25,973	1,556,182	551,894	20,023	70,437
Sep		19,507	1,224,330	398,456	13,190	58,416
Oct		23,600	1,425,679	555,923	16,749	71,368
Nov		20,805	1,271,861	584,104	14,297	59,010
Dec		28,179	1,319,597	627,235	17,248	59,539
Total		777,652	20,055,367	9,299,258	216,839	1,565,490

See footnote(s) at end of table.

--continued

**Young Chickens Slaughtered: Number Condemned Post-Mortem by Cause,
by Month and Annual Total, by State and United States, 2001 (continued)**

State and Month	Bruises	Cadaver	Contami- nation	Overscald	Other	Total All Causes ¹
	<i>Number of Head</i>	<i>Number of Head</i>	<i>Number of Head</i>	<i>Number of Head</i>	<i>Number of Head</i>	<i>Number of Head</i>
Washington						
Jan	*	*	*	*	*	*
Feb	*	*	*	*	*	*
Mar	*	*	*	*	*	*
Apr	*	*	*	*	*	*
May	*	*	*	*	*	42,634
Jun	*	1,265	*	*	*	38,096
Jul	*	*	*	*	*	31,746
Aug	*	*	*	*	*	33,412
Sep	*	*	*	*	*	25,449
Oct	*	*	*	268	*	36,913
Nov	*	*	*	*	*	24,634
Dec	*	*	*	*	*	32,362
Total	*	*	*	*	*	*
Other States						
Jan	3,016	53,522	72,086	11,630	121,997	269,232
Feb	2,418	34,900	66,895	11,769	109,960	251,459
Mar	2,453	36,838	79,731	17,258	213,669	1,473,853
Apr	5,696	17,695	72,542	8,473	218,605	456,815
May	8,667	37,874	82,800	13,731	227,176	259,451
Jun	4,291	43,408	78,071	12,477	217,399	208,722
Jul	2,807	35,419	76,791	13,827	151,767	229,591
Aug	5,466	29,422	94,113	19,131	49,847	151,759
Sep	4,092	15,882	93,831	15,014	61,352	253,174
Oct	5,897	26,110	103,766	10,150	73,362	149,260
Nov	5,685	33,584	70,787	9,930	80,321	241,596
Dec	4,994	39,390	77,126	17,940	50,766	152,559
Total	55,482	404,044	968,539	161,330	1,576,221	4,097,471
United States						
Jan	66,873	365,894	329,018	51,208	922,483	5,306,198
Feb	56,268	275,537	293,908	43,734	844,902	4,588,731
Mar	60,050	296,182	321,522	44,551	971,442	5,955,319
Apr	54,885	279,531	314,934	45,901	938,918	4,688,014
May	61,138	300,274	350,292	56,903	927,323	4,733,278
Jun	55,283	285,972	313,012	52,996	836,523	3,964,362
Jul	54,353	282,797	321,541	69,668	795,711	3,986,629
Aug	58,651	286,173	337,618	67,364	724,206	3,698,521
Sep	44,839	235,197	257,300	60,113	584,040	2,895,388
Oct	51,363	271,915	289,329	53,637	687,371	3,446,934
Nov	43,627	223,972	244,370	40,773	624,995	3,127,814
Dec	43,545	239,159	233,549	40,955	588,027	3,197,033
Total	650,875	3,342,603	3,606,393	627,803	9,445,941	49,588,221

* Included in "Other States" to avoid disclosure of individual operations.

¹ The sum of the individual diseases does not add across to "Total All Causes" for Other States.

**Mature Chickens Slaughtered: Number Condemned Post-Mortem by Cause,
by Type, by Month and Annual Total, United States, 2001**

Type and Month	Tuber- culosis	Leukosis	Septicemia	Airsac- culitis	Synovitis	Tumors
	<i>Number of Head</i>	<i>Number of Head</i>	<i>Number of Head</i>	<i>Number of Head</i>	<i>Number of Head</i>	<i>Number of Head</i>
Light						
Jan	8	2,829	222,829	11,714	1,833	117,377
Feb		2,633	217,052	8,994	1,299	101,381
Mar	2	5,949	211,230	9,022	634	116,604
Apr		2,080	192,640	6,386	164	129,537
May		6,915	162,516	7,418	215	114,915
Jun	1	3,653	181,340	8,117	129	128,660
Jul		1,642	143,498	6,046	141	94,839
Aug		1,684	172,609	6,955	3,686	113,308
Sep	1	1,127	178,741	10,396	2,546	103,065
Oct		1,728	243,281	13,466	86	116,351
Nov		1,836	223,195	11,394	104	94,612
Dec	1	1,207	258,695	12,288	93	124,806
Total	13	33,283	2,407,626	112,196	10,930	1,355,455
Heavy						
Jan		2,044	76,636	2,401	127	18,168
Feb		1,701	70,068	2,727	58	15,973
Mar		1,684	82,306	4,634	65	13,687
Apr		1,928	81,685	3,690	243	16,544
May	4	2,285	89,784	4,181	217	14,255
Jun	113	2,735	75,719	4,658	789	14,153
Jul	102	3,962	74,937	4,838	1,091	11,447
Aug		1,284	78,756	4,393	250	13,293
Sep		1,077	67,927	3,031	203	9,732
Oct		1,186	84,173	5,048	191	11,232
Nov	1	837	68,502	2,889	286	8,506
Dec		773	68,104	3,457	192	8,234
Total	220	21,496	918,597	45,947	3,712	155,224
Total Mature						
Jan	8	4,873	299,465	14,115	1,960	135,545
Feb		4,334	287,120	11,721	1,357	117,354
Mar	2	7,633	293,536	13,656	699	130,291
Apr		4,008	274,325	10,076	407	146,081
May	4	9,200	252,300	11,599	432	129,170
Jun	114	6,388	257,059	12,775	918	142,813
Jul	102	5,604	218,435	10,884	1,232	106,286
Aug		2,968	251,365	11,348	3,936	126,601
Sep	1	2,204	246,668	13,427	2,749	112,797
Oct		2,914	327,454	18,514	277	127,583
Nov	1	2,673	291,697	14,283	390	103,118
Dec	1	1,980	326,799	15,745	285	133,040
Total	233	54,779	3,326,223	158,143	14,642	1,510,679

--continued

**Mature Chickens Slaughtered: Number Condemned Post-Mortem by Cause,
by Type, by Month and Annual Total, United States, 2001 (continued)**

Type and Month	Bruises	Cadaver	Contami- nation	Overscald	Other	Total All Causes
	<i>Number of Head</i>	<i>Number of Head</i>	<i>Number of Head</i>	<i>Number of Head</i>	<i>Number of Head</i>	<i>Number of Head</i>
Light						
Jan	29,681	20,686	189,904	1,388	38,005	636,254
Feb	34,730	15,266	145,080	709	40,005	567,149
Mar	30,678	18,097	142,954	1,815	35,611	572,596
Apr	20,466	17,231	136,758	1,358	34,308	540,928
May	21,652	19,412	127,535	461	32,016	493,055
Jun	16,173	18,637	130,882	3,622	22,494	513,708
Jul	16,281	16,295	102,170	1,435	43,174	425,521
Aug	18,827	20,210	122,495	717	36,621	497,112
Sep	16,500	16,400	120,714	242	44,471	494,203
Oct	29,663	31,193	167,893	589	41,240	645,490
Nov	30,260	18,946	156,134	217	31,678	568,376
Dec	27,051	16,562	129,507	1,042	34,330	605,582
Total	291,962	228,935	1,672,026	13,595	433,953	6,559,974
Heavy						
Jan	1,935	11,939	18,019	306	23,489	155,064
Feb	2,038	11,966	17,594	880	24,541	147,546
Mar	2,284	12,413	13,083	1,177	27,767	159,100
Apr	1,880	14,323	12,353	235	28,425	161,306
May	1,876	17,981	15,575	741	37,140	184,039
Jun	1,855	14,198	17,922	1,297	49,028	182,467
Jul	2,110	15,694	15,614	1,017	40,351	171,163
Aug	1,934	18,825	21,006	1,269	45,173	186,183
Sep	1,430	12,295	16,439	1,184	28,282	141,600
Oct	1,783	14,395	21,245	1,083	41,888	182,224
Nov	1,303	14,036	16,540	1,565	24,749	139,214
Dec	1,147	15,450	14,950	902	30,895	144,104
Total	21,575	173,515	200,340	11,656	401,728	1,954,010
Total Mature						
Jan	31,616	32,625	207,923	1,694	61,494	791,318
Feb	36,768	27,232	162,674	1,589	64,546	714,695
Mar	32,962	30,510	156,037	2,992	63,378	731,696
Apr	22,346	31,554	149,111	1,593	62,733	702,234
May	23,528	37,393	143,110	1,202	69,156	677,094
Jun	18,028	32,835	148,804	4,919	71,522	696,175
Jul	18,391	31,989	117,784	2,452	83,525	596,684
Aug	20,761	39,035	143,501	1,986	81,794	683,295
Sep	17,930	28,695	137,153	1,426	72,753	635,803
Oct	31,446	45,588	189,138	1,672	83,128	827,714
Nov	31,563	32,982	172,674	1,782	56,427	707,590
Dec	28,198	32,012	144,457	1,944	65,225	749,686
Total	313,537	402,450	1,872,366	25,251	835,681	8,513,984

**Young Turkeys (Mature) Slaughtered: Number, Live Weight, Average Live Weight,
Pounds Certified and Post-Mortem Condemnations, by Month
and Annual Total, by State, 2001**

State and Month	Number Slaughtered	Live Weight	Average Live Weight	Total Certified ¹	Post-Mortem Condemnations	
					NY Dressed Weight	Percent ²
	<i>1,000 Head</i>	<i>1,000 Pounds</i>	<i>Pounds</i>	<i>1,000 Pounds</i>	<i>1,000 Pounds</i>	<i>Percent</i>
Arkansas						
Jan	2,281	39,718	17.41	33,235	678	1.90
Feb	2,050	36,932	18.02	30,265	711	2.14
Mar	2,297	41,571	18.10	34,677	628	1.68
Apr	2,189	37,306	17.04	29,270	554	1.65
May	2,456	42,522	17.31	34,835	591	1.54
Jun	2,393	40,965	17.12	33,087	564	1.53
Jul	2,421	42,446	17.53	35,216	732	1.92
Aug	2,704	45,362	16.78	36,518	818	2.00
Sep	2,187	38,996	17.83	32,177	758	2.16
Oct	2,913	51,670	17.74	42,625	818	1.76
Nov	2,882	49,800	17.28	40,362	730	1.63
Dec	2,210	39,042	17.66	32,220	599	1.71
Total	28,983	506,330	17.47	414,487	8,181	1.80
California						
Jan	*	*	*	*	*	*
Feb	*	*	*	*	*	*
Mar	1,122	28,814	25.68	24,689	610	2.35
Apr	1,204	29,699	24.67	25,072	551	2.06
May	*	*	*	*	*	*
Jun	1,328	30,199	22.74	26,366	461	1.70
Jul	1,376	32,434	23.57	28,491	536	1.84
Aug	*	*	*	*	*	*
Sep	1,532	37,723	24.63	32,275	1,037	3.06
Oct	*	*	*	*	*	*
Nov	*	*	*	*	*	*
Dec	*	*	*	*	*	*
Total	*	*	*	*	*	*
Iowa						
Jan	1,347	42,851	31.82	33,862	1,297	3.36
Feb	1,317	41,778	31.72	32,339	1,379	3.67
Mar	1,323	42,447	32.07	32,300	1,316	3.44
Apr	1,262	40,381	31.99	31,276	1,087	2.99
May	1,504	46,556	30.95	36,264	1,108	2.65
Jun	1,466	44,148	30.12	34,619	1,025	2.58
Jul	1,431	43,317	30.27	33,769	1,065	2.73
Aug	1,530	45,723	29.89	35,655	1,091	2.65
Sep	1,488	40,058	26.93	31,265	916	2.54
Oct	1,621	47,761	29.46	36,705	1,333	3.10
Nov	1,501	43,647	29.08	33,868	1,036	2.64
Dec	1,082	35,937	33.21	27,608	1,087	3.36
Total	16,872	514,604	30.50	399,530	13,740	2.97

See footnote(s) at end of table.

--continued

**Young Turkeys (Mature) Slaughtered: Number, Live Weight, Average Live Weight,
Pounds Certified and Post-Mortem Condemnations, by Month
and Annual Total, by State, 2001 (continued)**

State and Month	Number Slaughtered	Live Weight	Average Live Weight	Total Certified ¹	Post-Mortem Condemnations	
					NY Dressed Weight	Percent ²
	<i>1,000 Head</i>	<i>1,000 Pounds</i>	<i>Pounds</i>	<i>1,000 Pounds</i>	<i>1,000 Pounds</i>	<i>Percent</i>
Minnesota						
Jan	2,915	78,821	27.04	62,499	2,180	3.07
Feb	2,667	68,344	25.63	53,869	2,042	3.32
Mar	3,094	79,484	25.69	62,977	2,637	3.69
Apr	3,083	82,476	26.75	64,054	2,337	3.15
May	3,578	94,896	26.53	75,646	2,334	2.73
Jun	3,640	89,668	24.63	70,815	2,174	2.69
Jul	3,682	89,030	24.18	70,562	2,303	2.87
Aug	4,152	95,000	22.88	75,998	2,087	2.44
Sep	3,357	79,511	23.68	61,814	1,782	2.49
Oct	4,086	97,644	23.90	77,978	1,730	1.97
Nov	3,328	82,102	24.67	65,372	1,484	2.01
Dec	2,593	68,120	26.27	53,415	1,537	2.51
Total	40,175	1,005,096	25.02	794,999	24,627	2.72
Missouri						
Jan	2,187	58,765	26.87	47,705	1,319	2.49
Feb	1,733	47,987	27.69	37,468	1,580	3.66
Mar	2,070	53,657	25.92	42,285	1,269	2.63
Apr	1,783	49,089	27.54	38,386	1,086	2.46
May	1,893	52,687	27.83	40,928	1,132	2.39
Jun	1,778	50,701	28.51	39,726	1,053	2.31
Jul	1,871	51,937	27.76	40,498	1,042	2.23
Aug	2,047	53,854	26.31	42,216	937	1.93
Sep	1,792	50,381	28.11	47,098	1,057	2.33
Oct	2,111	59,643	28.26	45,940	1,131	2.11
Nov	1,857	51,298	27.63	39,721	970	2.10
Dec	1,721	47,451	27.57	36,740	889	2.08
Total	22,843	627,450	27.47	498,711	13,465	2.38
North Carolina						
Jan	*	*	*	*	*	*
Feb	2,545	67,603	26.56	53,342	1,098	1.80
Mar	2,934	77,278	26.34	60,889	1,484	2.13
Apr	2,771	72,917	26.32	57,664	1,310	2.00
May	3,039	81,072	26.68	64,185	1,733	2.38
Jun	2,855	76,129	26.67	60,212	1,272	1.86
Jul	2,954	79,776	27.00	63,086	1,110	1.55
Aug	*	*	*	*	*	*
Sep	*	*	*	*	*	*
Oct	*	*	*	*	*	*
Nov	3,304	83,534	25.28	65,812	1,174	1.56
Dec	*	*	*	*	*	*
Total	35,082	923,432	26.32	730,202	15,345	1.85

See footnote(s) at end of table.

--continued

**Young Turkeys (Mature) Slaughtered: Number, Live Weight, Average Live Weight,
Pounds Certified and Post-Mortem Condemnations, by Month
and Annual Total, by State, 2001 (continued)**

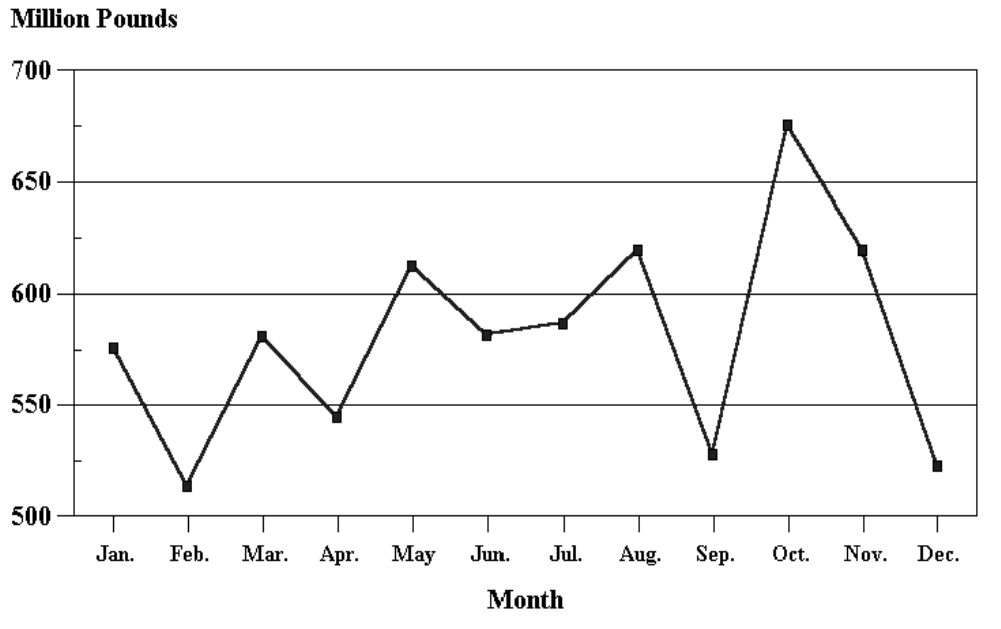
State and Month	Number Slaughtered	Live Weight	Average Live Weight	Total Certified ¹	Post-Mortem Condemnations	
					NY Dressed Weight	Percent ²
	<i>1,000 Head</i>	<i>1,000 Pounds</i>	<i>Pounds</i>	<i>1,000 Pounds</i>	<i>1,000 Pounds</i>	<i>Percent</i>
Pennsylvania						
Jan	*	*	*	*	*	*
Feb	*	*	*	*	*	*
Mar	*	*	*	*	*	*
Apr	*	*	*	*	*	*
May	*	*	*	*	*	*
Jun	*	*	*	*	*	*
Jul	*	*	*	*	*	*
Aug	*	*	*	*	*	*
Sep	*	*	*	*	*	*
Oct	*	*	*	*	*	*
Nov	1,178	26,258	22.30	20,735	370	1.57
Dec	*	*	*	*	*	*
Total	*	*	*	*	*	*
Virginia						
Jan	3,111	69,038	22.19	53,512	898	1.45
Feb	2,819	62,030	22.00	48,006	821	1.47
Mar	3,069	69,074	22.51	53,572	884	1.42
Apr	2,826	64,881	22.96	48,977	789	1.35
May	3,195	73,662	23.06	57,057	820	1.24
Jun	3,076	69,287	22.52	53,457	3,461	5.55
Jul	3,037	66,672	21.95	51,254	723	1.21
Aug	3,335	71,666	21.49	55,370	819	1.27
Sep	2,902	61,788	21.29	46,424	766	1.38
Oct	3,759	82,296	21.89	63,151	948	1.28
Nov	3,252	67,503	20.76	52,578	734	1.21
Dec	2,690	59,218	22.02	46,690	728	1.37
Total	37,071	817,115	22.04	630,048	12,391	1.69
Other States						
Jan	9,330	286,783	30.74	227,503	6,200	2.40
Feb	5,977	189,810	31.76	150,634	4,515	2.64
Mar	5,729	188,297	32.87	147,338	4,243	2.50
Apr	5,161	167,812	32.52	130,433	3,482	2.31
May	7,589	221,409	29.17	176,201	4,200	2.11
Jun	5,878	181,362	30.85	142,438	3,346	2.05
Jul	6,040	181,452	30.04	142,249	3,373	2.07
Aug	11,012	308,016	27.97	243,924	5,694	2.05
Sep	7,670	219,871	28.67	172,879	4,242	2.14
Oct	11,905	336,671	28.28	269,712	6,103	2.01
Nov	7,216	216,251	29.97	171,221	3,802	1.95
Dec	9,339	273,561	29.29	217,863	4,551	1.85
Total	92,846	2,771,295	29.85	2,192,395	53,751	2.16

* Included in "Other States" to avoid disclosing individual operations.

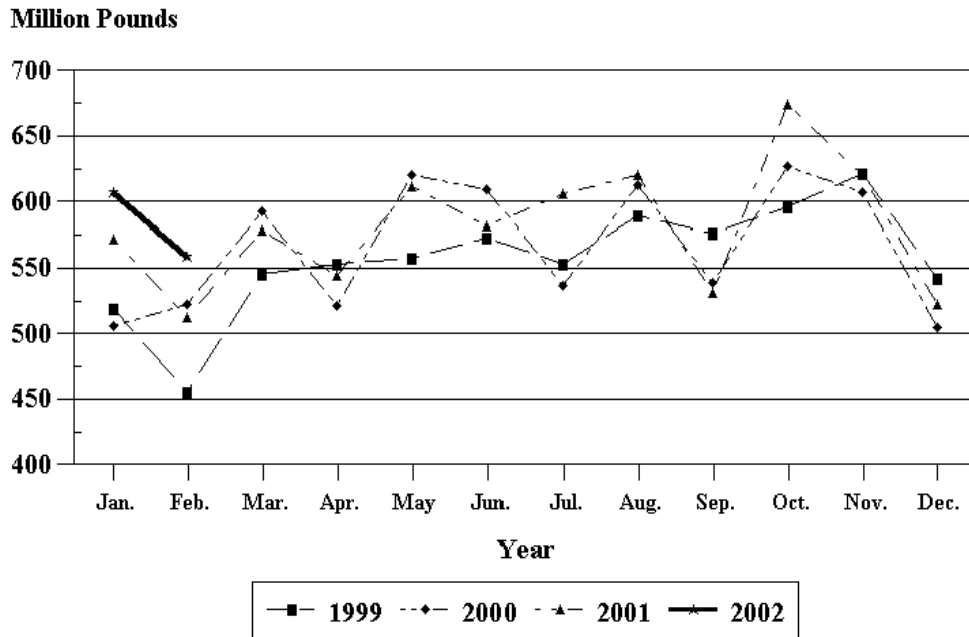
¹ Ready-to-cook weights.

² Pounds condemned as a percent of equivalent N.Y. dressed weight of quantity inspected.

Total Live Weight of Young Turkeys Slaughtered Under Federal Inspection, by Month, U.S., 2001



Young Turkeys: Live Weight Slaughtered, by Month, 1999-2002



**Young Turkeys (Mature) Slaughtered: Number Condemned Post-Mortem by Cause,
by Month and Annual Total, by State and United States, 2001**

State and Month	Tuber- culosis	Leukosis	Septicemia	Airsac- culitis	Synovitis	Tumors
	<i>Number of Head</i>	<i>Number of Head</i>	<i>Number of Head</i>	<i>Number of Head</i>	<i>Number of Head</i>	<i>Number of Head</i>
Arkansas						
Jan		2	6,375	*	*	5
Feb		*	*	*	*	
Mar		*	5,448	*	*	*
Apr		*	5,705	*	*	
May		20	5,099	527	*	*
Jun		*	*	*	*	
Jul		*	5,676	*	*	*
Aug		*	6,923	*	5	5
Sep		*	8,761	*	*	*
Oct			8,618	*	*	*
Nov			8,079	*	*	*
Dec		*	6,839	*	*	*
Total		*	78,195	*	*	*
California						
Jan		*	*	54	*	*
Feb		*	*	*	*	6
Mar		*	*	85		*
Apr		*	5,238	*	4	*
May		*	*	209	*	11
Jun		16	4,416	*	*	*
Jul		19	5,468	421	*	*
Aug		*	6,594	1,081	*	*
Sep		176	11,904	3,691	*	*
Oct		*	11,441	*	*	*
Nov		*	8,327	582	*	*
Dec		*	6,219	*	*	*
Total		*	87,264	8,383	*	*
Iowa						
Jan			6,155	5,347	*	*
Feb		*	6,598	*	*	*
Mar			7,251	3,742	*	*
Apr			*	3,116	*	7
May			5,299	*	1,546	*
Jun			4,860	*	1,661	2
Jul			4,962	1,792	1,991	*
Aug			4,775	2,613	*	*
Sep		*	4,963	1,896	*	*
Oct			7,832	2,198	*	*
Nov			7,392	2,238	*	*
Dec		*	*	1,625	1,856	*
Total		*	71,168	35,924	*	*

See footnote(s) at end of table.

--continued

**Young Turkeys (Mature) Slaughtered: Number Condemned Post-Mortem by Cause,
by Month and Annual Total, by State and United States, 2001 (continued)**

State and Month	Bruises	Cadaver	Contami- nation	Overscald	Other	Total All Causes
	<i>Number of Head</i>	<i>Number of Head</i>	<i>Number of Head</i>	<i>Number of Head</i>	<i>Number of Head</i>	<i>Number of Head</i>
Arkansas						
Jan	*	495	*	*	*	*
Feb	*	235	*	*	*	*
Mar	*	403	*	*	*	*
Apr	*	227	*	*	*	10,182
May	*	333	*	*	*	*
Jun	*	293	*	*	1,965	9,998
Jul	*	469	*	*	*	*
Aug	56	1,071	*	*	*	13,862
Sep	*	935	*	*	*	14,248
Oct	*	1,205	*	796	*	16,138
Nov	*	808	*	*	*	13,762
Dec	*	641	*	*	*	*
Total	*	7,115	*	*	*	147,450
California						
Jan	48	*	*	*	*	*
Feb	*	*	*	*	387	*
Mar	*	*	*	79	272	*
Apr	23	*	76	63	*	6,114
May	53	*	126	34	193	*
Jun	*	485	163	*	*	7,305
Jul	32	*	194	*	296	6,918
Aug	18	*	234	*	240	9,773
Sep	*	*	*	584	*	21,325
Oct	50	*	311	*	250	14,884
Nov	*	*	241	*	202	10,904
Dec	*	*	51	*	240	7,597
Total	537	*	2,876	*	6,202	117,214
Iowa						
Jan	63	*	803	*	695	15,991
Feb	70	*	518	*	901	18,141
Mar	89	*	436	*	1,263	16,664
Apr	51	*	396	*	*	11,832
May	41	*	411	*	*	11,687
Jun	66	*	566	*	*	10,232
Jul	*	*	*	*	*	11,554
Aug	57	*	463	*	*	12,513
Sep	127	*	*	*	*	10,589
Oct	60	*	415	*	1,000	13,975
Nov	*	*	334	*	576	13,236
Dec	56	*	471	18	*	10,942
Total	757	*	6,081	*	*	157,356

See footnote(s) at end of table.

--continued

**Young Turkeys (Mature) Slaughtered: Number Condemned Post-Mortem by Cause,
by Month and Annual Total, by State and United States, 2001 (continued)**

State and Month	Tuber- culosis	Leukosis	Septicemia	Airsac- culitis	Synovitis	Tumors
	<i>Number of Head</i>	<i>Number of Head</i>	<i>Number of Head</i>	<i>Number of Head</i>	<i>Number of Head</i>	<i>Number of Head</i>
Minnesota						
Jan		9	15,953	2,781	*	2
Feb		11	13,793	4,409	*	22
Mar		5	13,460	3,559	*	12
Apr		*	14,559	3,060	*	*
May		*	13,139	2,531	*	14
Jun		5	12,911	1,831	*	7
Jul		*	12,529	2,083	1,163	14
Aug		*	14,675	2,201	*	*
Sep		*	13,365	1,813	*	9
Oct		14	16,910	1,879	*	24
Nov		*	15,133	*	*	15
Dec		*	16,976	*	*	*
Total		*	173,403	30,290	*	186
Missouri						
Jan			21,842	*	15	*
Feb			19,687	*	*	*
Mar			17,985	*	*	*
Apr			13,746	*	*	*
May			14,478	*	*	*
Jun		*	12,116	*	*	*
Jul		*	10,684	*	*	*
Aug			13,039	*	*	*
Sep			13,066	*	*	2
Oct			14,406	*	*	*
Nov			10,393	*	*	10
Dec			10,589	*	*	*
Total		*	172,031	*	*	*
North Carolina						
Jan		*	6,987	*	*	*
Feb		*	5,947	*	4	*
Mar		*	6,342	*	*	*
Apr		*	5,119	*	*	*
May		*	4,410	*	*	*
Jun		*	3,656	*	*	*
Jul		*	3,549	*	*	*
Aug		*	*	*	*	*
Sep		*	4,272	*	*	*
Oct		*	*	*	*	5
Nov		*	*	*	*	*
Dec		*	*	*	*	*
Total		*	60,075	*	*	*

See footnote(s) at end of table.

--continued

**Young Turkeys (Mature) Slaughtered: Number Condemned Post-Mortem by Cause,
by Month and Annual Total, by State and United States, 2001 (continued)**

State and Month	Bruises	Cadaver	Contami- nation	Overscald	Other	Total All Causes
	<i>Number of Head</i>	<i>Number of Head</i>	<i>Number of Head</i>	<i>Number of Head</i>	<i>Number of Head</i>	<i>Number of Head</i>
Minnesota						
Jan	*	833	819	*	1,084	23,025
Feb	108	889	777	*	877	21,658
Mar	137	951	729	*	968	20,439
Apr	*	748	865	*	1,413	21,721
May	171	705	947	*	1,317	20,428
Jun	154	1,093	796	*	1,366	19,196
Jul	121	881	663	*	2,609	20,425
Aug	181	1,149	1,172	*	1,712	22,384
Sep	138	1,023	759	*	1,482	19,854
Oct	194	1,196	1,000	*	1,563	24,096
Nov	203	886	772	*	1,327	21,307
Dec	127	573	786	63	1,515	23,927
Total	1,920	10,927	10,085	*	17,233	258,460
Missouri						
Jan	*	*	707	*	1,228	26,490
Feb	*	*	*	*	*	23,191
Mar	*	*	*	*	*	21,431
Apr	*	116	340	*	*	16,265
May	32	209	581	*	*	17,315
Jun	*	*	*	*	*	14,791
Jul	*	229	698	*	*	15,594
Aug	28	*	*	*	*	17,247
Sep	*	*	*	10	*	16,552
Oct	*	438	700	*	*	18,113
Nov	*	395	801	*	*	14,180
Dec	51	361	*	*	*	14,116
Total	*	3,519	7,407	*	*	215,285
North Carolina						
Jan	*	*	*	*	*	18,317
Feb	137	*	*	*	*	16,064
Mar	*	1,478	*	512	1,551	16,587
Apr	160	1,318	*	*	1,297	13,058
May	*	1,176	*	*	1,424	11,973
Jun	97	1,159	*	*	1,230	10,404
Jul	90	1,432	*	*	1,030	10,736
Aug	*	1,836	*	*	1,193	14,287
Sep	*	*	*	*	*	13,169
Oct	130	1,282	*	*	1,257	13,896
Nov	123	*	*	*	*	13,638
Dec	146	*	*	*	*	12,602
Total	1,700	19,342	*	*	14,419	164,731

See footnote(s) at end of table.

--continued

**Young Turkeys (Mature) Slaughtered: Number Condemned Post-Mortem by Cause,
by Month and Annual Total, by State and United States, 2001 (continued)**

State and Month	Tuber- culosis	Leukosis	Septicemia	Airsac- culitis	Synovitis	Tumors
	<i>Number of Head</i>	<i>Number of Head</i>	<i>Number of Head</i>	<i>Number of Head</i>	<i>Number of Head</i>	<i>Number of Head</i>
Ohio						
Jan		*	*	*	*	*
Feb		*	*	*	*	*
Mar		*	*	*	*	*
Apr		*	*	*	*	*
May		*	*	*	*	*
Jun		*	*	*	*	*
Jul		*	*	*	*	*
Aug		*	*	*	*	*
Sep		*	*	*	*	*
Oct		*	*	*	*	*
Nov		*	*	*	*	*
Dec		*	*	*	*	*
Total		*	*	*	*	*
Pennsylvania						
Jan		*	*	*	30	*
Feb		4	*	*	*	6
Mar		*	*	*	19	7
Apr			*	*	41	2
May		*	*	*	*	*
Jun		*	*	*	17	*
Jul		9	*	790	*	*
Aug		4	*	682	32	*
Sep		5	*	*	*	*
Oct		*	*	*	22	*
Nov		*	*	1,021	*	6
Dec		2	*	723	37	*
Total		*	*	*	357	*
Virginia						
Jan		*	5,531	*	*	*
Feb		5	4,935	*	*	*
Mar		12	5,371	202	*	*
Apr		*	2,839	118	*	*
May		*	3,116	*	*	*
Jun		*	2,513	*	4	*
Jul		2	2,251	218	*	*
Aug		*	3,111	207	5	*
Sep		*	3,509	*	*	15
Oct		*	4,388	*	*	*
Nov		*	4,189	146	*	23
Dec		*	4,058	*	*	*
Total		*	45,811	*	*	*

See footnote(s) at end of table.

--continued

**Young Turkeys (Mature) Slaughtered: Number Condemned Post-Mortem by Cause,
by Month and Annual Total, by State and United States, 2001 (continued)**

State and Month	Bruises	Cadaver	Contami- nation	Overscald	Other	Total All Causes
	<i>Number of Head</i>	<i>Number of Head</i>	<i>Number of Head</i>	<i>Number of Head</i>	<i>Number of Head</i>	<i>Number of Head</i>
Ohio						
Jan	*	*	*	*	*	*
Feb	*	*	*	*	*	*
Mar	*	*	*	*	*	*
Apr	*	*	*	*	*	*
May	*	*	*	*	*	*
Jun	*	*	*	*	*	*
Jul	*	*	*	*	*	*
Aug	*	*	*	*	*	*
Sep	*	*	122	*	*	*
Oct	*	*	58	*	*	*
Nov	16	*	61	*	*	*
Dec	*	*	45	*	366	*
Total	*	*	*	*	*	*
Pennsylvania						
Jan	216	*	*	*	*	*
Feb	105	*	*	*	*	6,865
Mar	154	*	*	*	*	7,951
Apr	126	*	*	*	828	6,108
May	121	*	*	*	1,218	7,189
Jun	107	*	*	*	1,085	7,816
Jul	128	*	*	*	1,567	*
Aug	102	*	222	*	*	5,475
Sep	*	*	*	*	*	5,146
Oct	69	*	247	*	*	*
Nov	159	*	340	*	*	9,184
Dec	*	*	240	12	*	*
Total	1,511	*	*	*	*	88,159
Virginia						
Jan	*	*	*	*	*	*
Feb	*	1,184	*	*	*	9,047
Mar	*	*	*	*	*	9,413
Apr	38	*	*	612	*	7,125
May	*	*	386	*	*	6,657
Jun	24	*	*	*	*	7,811
Jul	*	*	376	*	1,371	*
Aug	*	1,493	426	*	1,392	6,821
Sep	*	1,456	360	*	1,419	7,273
Oct	*	2,475	350	257	1,821	9,518
Nov	*	1,993	323	*	*	8,495
Dec	*	*	365	106	*	7,153
Total	*	*	4,405	*	*	96,226

See footnote(s) at end of table.

--continued

**Young Turkeys (Mature) Slaughtered: Number Condemned Post-Mortem by Cause,
by Month and Annual Total, by State and United States, 2001 (continued)**

State and Month	Tuber- culosis	Leukosis	Septicemia	Airsac- culitis	Synovitis	Tumors
	<i>Number of Head</i>	<i>Number of Head</i>	<i>Number of Head</i>	<i>Number of Head</i>	<i>Number of Head</i>	<i>Number of Head</i>
Other States						
Jan		37	35,570	11,235	4,843	89
Feb		804	38,071	15,904	4,439	85
Mar		131	37,736	9,514	6,306	107
Apr		100	30,267	7,535	4,731	110
May		160	33,521	8,574	3,292	95
Jun		169	32,585	7,313	3,159	32
Jul		437	26,378	8,299	2,239	297
Aug		208	34,325	9,815	5,575	206
Sep		317	29,177	11,847	4,409	497
Oct		120	37,385	9,411	5,851	65
Nov		81	31,916	7,179	5,763	20
Dec		121	37,444	8,015	2,792	69
Total		2,685	404,375	114,641	53,399	1,672
United States						
Jan		48	98,413	19,417	4,888	96
Feb		824	89,031	20,313	4,443	119
Mar		148	93,593	17,102	6,325	126
Apr		100	77,473	13,829	4,776	119
May		180	79,062	11,841	4,838	120
Jun		190	73,057	9,144	4,841	41
Jul		467	71,497	13,603	5,393	311
Aug		212	83,442	16,599	5,617	211
Sep		498	89,017	19,247	4,409	523
Oct		134	100,980	13,488	5,873	94
Nov		81	85,429	11,166	5,763	74
Dec		123	82,125	10,363	4,685	69
Total		3,005	1,023,119	176,112	61,851	1,903

See footnote(s) at end of table.

--continued

**Young Turkeys (Mature) Slaughtered: Number Condemned Post-Mortem by Cause,
by Month and Annual Total, by State and United States, 2001 (continued)**

State and Month	Bruises	Cadaver	Contami- nation	Overscald	Other	Total All Causes ¹
	<i>Number of Head</i>	<i>Number of Head</i>	<i>Number of Head</i>	<i>Number of Head</i>	<i>Number of Head</i>	<i>Number of Head</i>
Other States						
Jan	1,066	8,254	9,510	2,964	10,286	78,110
Feb	570	5,918	9,370	1,766	10,615	54,191
Mar	998	4,671	11,865	2,239	10,790	64,394
Apr	611	4,372	9,289	1,690	8,142	36,693
May	571	4,694	8,734	3,009	9,438	56,716
Jun	480	4,613	10,162	2,672	12,508	40,804
Jul	368	5,328	8,133	4,172	9,616	65,847
Aug	413	4,562	8,586	4,860	11,905	47,090
Sep	676	7,019	10,850	2,526	16,226	51,250
Oct	372	4,754	7,134	1,534	11,149	52,016
Nov	420	6,756	6,740	3,066	12,582	36,936
Dec	529	5,236	7,551	1,740	11,013	53,330
Total	7,074	66,177	107,924	32,238	134,270	637,377
United States						
Jan	1,393	9,582	11,839	2,964	13,293	161,933
Feb	990	8,226	10,665	1,766	12,780	149,157
Mar	1,378	7,503	13,030	2,830	14,844	156,879
Apr	1,009	6,781	10,966	2,365	11,680	129,098
May	989	7,117	11,185	3,043	13,590	131,965
Jun	928	7,643	11,687	2,672	18,154	128,357
Jul	739	8,339	10,064	4,172	16,489	131,074
Aug	855	10,111	11,103	4,860	16,442	149,452
Sep	941	10,433	12,091	3,120	19,127	159,406
Oct	875	11,350	10,215	2,587	17,040	162,636
Nov	926	10,838	9,612	3,066	14,687	141,642
Dec	909	6,811	9,509	1,939	13,134	129,667
Total	11,932	104,734	131,966	35,384	181,260	1,731,266

* Included in "Other States" to avoid disclosing individual operations.

¹ The sum of the individual diseases does not add across to "Total All Causes" for Other States.

**Old Turkeys (Breeders) Slaughtered: Number Condemned Post-Mortem
by Cause, by Month and Annual Total, United States, 2001**

Month	Tuber- culosis	Leukosis	Septicemia	Airsac- culitis	Synovitis	Tumors
	<i>Number of Head</i>	<i>Number of Head</i>	<i>Number of Head</i>	<i>Number of Head</i>	<i>Number of Head</i>	<i>Number of Head</i>
Jan		1	5,159	517	28	103
Feb		889	3,557	991	37	170
Mar		74	3,828	811	32	131
Apr		6	3,840	1,570	78	315
May		8	5,127	957	25	155
Jun		146	4,131	1,250	79	144
Jul		216	3,678	1,071	53	144
Aug		88	3,120	1,734	38	184
Sep		252	3,493	1,704	26	295
Oct		163	3,756	1,179	34	178
Nov		71	2,137	825	28	198
Dec		241	3,354	1,507	28	198
Total		2,155	45,180	14,116	486	2,215

--continued

**Old Turkeys (Breeders) Slaughtered: Number Condemned Post-Mortem
by Cause, by Month and Annual Total, United States, 2001 (continued)**

Month	Bruises	Cadaver	Contami- nation	Overscald	Other	Total All Causes
	<i>Number of Head</i>	<i>Number of Head</i>	<i>Number of Head</i>	<i>Number of Head</i>	<i>Number of Head</i>	<i>Number of Head</i>
Jan	10	106	243	9	467	6,643
Feb	18	102	243	72	567	6,646
Mar	9	138	207	12	390	5,632
Apr	24	320	221	48	804	7,226
May	17	116	184	20	700	7,309
Jun	12	137	141	20	703	6,763
Jul	11	185	196	70	520	6,144
Aug	17	233	280	128	513	6,335
Sep	32	178	151	15	259	6,405
Oct	17	178	157	9	1,248	6,919
Nov	10	129	87	19	261	3,765
Dec	20	96	188	14	580	6,226
Total	197	1,918	2,298	436	7,012	76,013

Poultry Slaughter Estimates

Data Sources: Data for poultry slaughter estimates are obtained from the Poultry Inspection Forms (FSIS 6000-21) which are completed by inspectors of the Food Safety and Inspection Service (FSIS), USDA, for all Federally Inspected (FI) plants. Over 99 percent of the total U.S. slaughter for any species is under FI. The number of head slaughtered daily, by species and class, as well as condemnations and total live and dressed weights are listed on the form. Approximately 350 plants in the U.S. are operated under Federal Inspection.

Revision Policy: The data in this report reflect any late reports received by FSIS or corrections which occurred after the monthly revisions were published. They are considered to be final and are not open to revision in the future.

Procedures and Reliability: Plant inspectors submit inspection forms (FSIS 6000-21) weekly. The reports cover weekly activities through Saturday night.

An edit provides checks for the detection of errors such as invalid plant information, duplication, and erroneous data. In addition, data are compared with historical data levels and averages for each plant.

Data for major slaughter plants with missing reports are adjusted to assure that all plants slaughtering a significant portion of a specific class are accounted for each week. Estimates for missing weeks are made only after verifying that the plant was in operation. Adjustments are based on either the previous week's information or a week determined to be similar to the one missing. Late reports replace imputed data as they become available. While there is a varying degree of incompleteness from month to month, it has only a minimal impact on the published totals.

Data are summarized weekly and accumulated to monthly totals. When a week extends into the following month, the reported data are allocated to the appropriate month.

Poultry slaughter estimates are based on a census of operating plants and, therefore, have no sampling error. However, they may be subject to errors such as omissions, duplications, and mistakes in reporting, recording, and processing the data. These errors are minimized through strict quality controls in the edit and summarization process, and a careful review of all reported data for consistency and reasonableness.

State data are published for selected states for young chicken and young turkeys. State data are not published if less than three plants operate for a species in a State, or if one plant has 60 percent or more of the total live weight for that species. Data for states not published are included in the "Other States" category. Also included in this category are data for published states that are confidential (denoted by an *). Data for all states are included in the U.S. totals. For 2001, young chickens were killed in 32 states, young turkeys in 21 states.

Definitions

Ante-Mortem Condemnations - Birds condemned prior to their entry into the slaughter plant.

Certified Ready-to-Cook - The weight of poultry certified wholesome by inspection after post-mortem condemnation pounds are removed. Ready-to-cook represents poultry meat ready for the marketing channel.

Ducks - Includes all ducks regardless of age and weight.

Fryer-Roaster Turkeys - Young immature birds, usually under 16 weeks of age. These are included with young turkeys as their numbers are too low to publish separately.

Mature Chickens - Fowl from breeder and market egg flocks and stags and cocks.

New York Dressed Weight - Carcass weight after only feathers and blood are removed. This weight is approximately 90% of live weight.

Old Turkeys (Breeders) - Fully matured birds held for egg production, usually over 15 months of age.

Other Poultry - Includes all other ready-to-cook products which bear the USDA Inspected for Wholesomeness legend.

Post-Mortem Condemnations - Carcasses or parts condemned by the inspector because of disease or mishandling and removed from the slaughter line and destroyed.

Young Chickens - Commercially grown broilers-fryers and other young immature birds such as roasters and capons.

Young Turkeys (Mature) - Young birds grown to a matured market age, about 5 months. Includes fryer roasters.

Released April 5, 2002, by the National Agricultural Statistics Service (NASS), Agricultural Statistics Board, U.S. Department of Agriculture. For information on "Poultry Slaughter 2001 Annual Summary" call John Lange at (202) 720-0585, office hours 7:00 a.m. to 4:30 p.m. ET.

The next "Poultry Slaughter Annual Summary" report will be released in April 2003.

The United States Department of Agriculture (USDA) prohibits discrimination in all its programs on the basis of race, color, national origin, gender, religion, age, disability, political beliefs, sexual orientation, and marital or family status. (Not all prohibited bases apply to all programs.) Persons with disabilities who require alternative means for communication of program information (braille, large print, audiotape, etc.) should contact the USDA's TARGET Center at 202-720-2600 (voice and TDD).

To file a complaint of discrimination, write USDA, Director, Office of Civil Rights, Room 326-W, Whitten Building, 1400 Independence Avenue, SW, Washington, D.C., 20250-9410, or call 202-720-5964 (voice or TDD). USDA is an equal opportunity provider and employer.

ACCESS TO REPORTS!!

For your convenience, there are several ways to obtain NASS reports, data products, and services:

INTERNET ACCESS

All NASS reports are available free of charge on the worldwide Internet. For access, connect to the Internet and go to the NASS Home Page at: <http://www.usda.gov/nass/>. Select "Today's Reports" or Publications and then Reports by Calendar or Publications and then Search, by Title or Subject.

E-MAIL SUBSCRIPTION

There are two options for subscribing via e-mail. All NASS reports are available by subscription free of charge direct to your e-mail address. 1) Starting with the NASS Home Page at <http://www.usda.gov/nass/>, click on **Publications**, then click on the **Subscribe by E-mail** button which takes you to the page describing e-mail delivery of reports. Finally, click on **Go to the Subscription Page** and follow the instructions. 2) If you do NOT have Internet access, send an e-mail message to: usda-reports@usda.mannlib.cornell.edu. In the body of the message type the word: **list**.

AUTOFAX ACCESS

NASSFax service is available for some reports from your fax machine. Please call 202-720-2000, using the handset attached to your fax. Respond to the voice prompts. Document 0411 is a list of available reports.

PRINTED REPORTS OR DATA PRODUCTS

CALL OUR TOLL-FREE ORDER DESK: 800-999-6779 (U.S. and Canada)
Other areas, please call 703-605-6220 FAX: 703-605-6900
(Visa, MasterCard, check, or money order acceptable for payment.)

ASSISTANCE

For **assistance** with general agricultural statistics or further information about NASS or its products or services, contact the **Agricultural Statistics Hotline** at **800-727-9540**, 7:30 a.m. to 4:00 p.m. ET, or e-mail: nass@nass.usda.gov.
