



United States
Department of
Agriculture

National
Agricultural
Statistics
Service



Poultry Slaughter 2003 Annual Summary

March 2004

Pou 2-1 (04)

USDA



Table of Contents

	Page
Poultry Slaughter: Number, Live Weight, and Average Live Weight by Type, by Month and Annual Total, United States, 2003	2
Poultry Slaughter: Chilled and Frozen, Pounds Certified by Type, by Month and Annual Total, United States, 2003	4
Poultry Slaughter: Ante-Mortem Condemnations by Type, by Month and Annual Total, United States, 2003	6
Poultry Slaughter: Post-Mortem Condemnations by Type, by Month and Annual Total, United States, 2003	8
Young Chickens Slaughtered: Number, Live Weight, Average Live Weight, Pounds Certified, and Post-Mortem Condemnations, by Month and Annual Total, by State, 2003	10
Young Chickens Slaughtered: Number Condemned Post-Mortem by Cause, by Month and Annual Total, by State and United States, 2003	18
Mature Chickens Slaughtered: Number Condemned Post-Mortem by Cause, by Type, by Month and Annual Total, United States, 2003	34
Young Turkeys (Mature) Slaughtered: Number, Live Weight, Average Live Weight, Pounds Certified, and Post-Mortem Condemnations, by Month and Annual Total, by State, 2003	36
Young Turkeys (Mature) Slaughtered: Number Condemned Post-Mortem by Cause, by Month and Annual Total, by State and United States, 2003	40
Old Turkeys (Breeders) Slaughtered: Number Condemned Post-Mortem by Cause, by Month and Annual Total, United States, 2003	48
Reliability Statement	49
Definitions	50

**Poultry Slaughter: Number, Live Weight, and Average Live Weight
by Type, by Month and Annual Total, United States, 2003**

Month	Chickens					Ducks
	Young	Mature			Total	
		Light	Heavy	Total		
	<i>1,000 Head</i>	<i>1,000 Head</i>	<i>1,000 Head</i>	<i>1,000 Head</i>	<i>1,000 Head</i>	<i>1,000 Head</i>
Number						
Jan	725,178	8,224	6,138	14,362	739,540	2,134
Feb	633,914	6,816	5,410	12,226	646,140	1,992
Mar	683,185	6,963	5,596	12,559	695,744	1,964
Apr	712,877	8,334	5,602	13,936	726,813	2,034
May	727,278	7,164	5,929	13,093	740,371	2,104
Jun	714,604	6,440	6,304	12,744	727,348	1,888
Jul	762,876	5,842	6,961	12,803	775,679	1,927
Aug	723,786	5,515	6,170	11,685	735,471	1,893
Sep	729,180	5,037	5,998	11,035	740,215	2,037
Oct	781,906	5,982	6,328	12,310	794,216	2,241
Nov	626,674	4,356	5,031	9,387	636,061	1,875
Dec	715,407	5,932	5,497	11,429	726,836	2,212
Total	8,536,865	76,605	70,964	147,569	8,684,434	24,301
Live Weight	<i>1,000 pounds</i>	<i>1,000 pounds</i>	<i>1,000 pounds</i>	<i>1,000 pounds</i>	<i>1,000 pounds</i>	<i>1,000 pounds</i>
Jan	3,762,861	28,000	47,245	75,245	3,838,106	14,266
Feb	3,287,201	22,700	42,843	65,543	3,352,744	12,921
Mar	3,505,352	23,586	44,165	67,751	3,573,103	12,860
Apr	3,692,056	28,539	44,650	73,189	3,765,245	13,574
May	3,774,424	24,658	47,436	72,094	3,846,518	13,285
Jun	3,728,199	22,294	50,358	72,652	3,800,851	12,204
Jul	3,906,159	20,093	55,301	75,394	3,981,553	12,619
Aug	3,716,037	19,260	49,313	68,573	3,784,610	12,431
Sep	3,791,269	17,261	47,869	65,130	3,856,399	13,600
Oct	4,122,769	20,453	50,598	71,051	4,193,820	15,226
Nov	3,274,121	14,700	40,128	54,828	3,328,949	12,796
Dec	3,757,083	19,782	43,741	63,523	3,820,606	15,089
Total	44,317,531	261,326	563,647	824,973	45,142,504	160,871
Average Live Weight	<i>Pounds</i>	<i>Pounds</i>	<i>Pounds</i>	<i>Pounds</i>	<i>Pounds</i>	<i>Pounds</i>
Jan	5.19	3.40	7.70	5.24	5.19	6.69
Feb	5.19	3.33	7.92	5.36	5.19	6.49
Mar	5.13	3.39	7.89	5.39	5.14	6.55
Apr	5.18	3.42	7.97	5.25	5.18	6.67
May	5.19	3.44	8.00	5.51	5.20	6.31
Jun	5.22	3.46	7.99	5.70	5.23	6.46
Jul	5.12	3.44	7.94	5.89	5.13	6.55
Aug	5.13	3.49	7.99	5.87	5.15	6.56
Sep	5.20	3.43	7.98	5.90	5.21	6.68
Oct	5.27	3.42	8.00	5.77	5.28	6.79
Nov	5.22	3.37	7.98	5.84	5.23	6.83
Dec	5.25	3.33	7.96	5.56	5.26	6.82
Total	5.19	3.41	7.94	5.59	5.20	6.62

--continued

**Poultry Slaughter: Number, Live Weight, and Average Live Weight
by Type, by Month and Annual Total, United States, 2003 (continued)**

Month	Turkeys			Other Poultry	Total Poultry
	Young	Old	Total		
	<i>1,000 Head</i>	<i>1,000 Head</i>	<i>1,000 Head</i>	<i>1,000 Head</i>	<i>1,000 Head</i>
Number					
Jan	21,342	319	21,661		
Feb	20,024	178	20,202		
Mar	21,462	189	21,651		
Apr	21,915	171	22,086		
May	22,357	244	22,601		
Jun	22,022	248	22,270		
Jul	23,297	384	23,681		
Aug	22,019	339	22,358		
Sep	22,184	286	22,470		
Oct	25,122	267	25,389		
Nov	22,413	248	22,661		
Dec	20,596	155	20,751		
Total	264,753	3,028	267,781		
	<i>1,000 pounds</i>	<i>1,000 pounds</i>	<i>1,000 pounds</i>	<i>1,000 pounds</i>	<i>1,000 pounds</i>
Live Weight					
Jan	600,502	8,631	609,133	985	4,462,490
Feb	543,533	4,961	548,494	684	3,914,843
Mar	588,863	5,217	594,080	774	4,180,817
Apr	595,946	4,559	600,505	854	4,380,178
May	608,654	6,695	615,349	853	4,476,005
Jun	603,366	6,522	609,888	451	4,423,394
Jul	613,534	10,256	623,790	608	4,618,570
Aug	570,004	8,583	578,587	859	4,376,487
Sep	583,788	7,889	591,677	1,321	4,462,997
Oct	662,629	7,025	669,654	1,518	4,880,218
Nov	570,816	6,729	577,545	754	3,920,044
Dec	551,796	4,413	556,209	355	4,392,259
Total	7,093,431	81,480	7,174,911	10,016	52,488,302
	<i>Pounds</i>	<i>Pounds</i>	<i>Pounds</i>	<i>Pounds</i>	<i>Pounds</i>
Average Live Weight					
Jan	28.14	27.04	28.12		
Feb	27.14	27.89	27.15		
Mar	27.44	27.55	27.44		
Apr	27.19	26.58	27.19		
May	27.22	27.48	27.22		
Jun	27.40	26.29	27.39		
Jul	26.33	26.73	26.34		
Aug	25.89	25.35	25.88		
Sep	26.31	27.63	26.33		
Oct	26.38	26.33	26.38		
Nov	25.47	27.13	25.49		
Dec	26.79	28.49	26.80		
Total	26.79	26.92	26.79		

**Poultry Slaughter: Chilled and Frozen, Pounds Certified by Type,
by Month and Annual Total, United States, 2003¹**

Month	Chickens					Ducks
	Young	Mature			Total	
		Light	Heavy	Total		
	<i>1,000 Pounds</i>	<i>1,000 Pounds</i>	<i>1,000 Pounds</i>	<i>1,000 Pounds</i>	<i>1,000 Pounds</i>	<i>1,000 Pounds</i>
Chilled						
Jan	2,505,935	13,480	30,819	44,299	2,550,234	3,693
Feb	2,194,045	10,966	27,761	38,727	2,232,772	3,073
Mar	2,340,477	11,222	28,963	40,185	2,380,662	2,972
Apr	2,461,489	12,804	29,072	41,876	2,503,365	3,443
May	2,498,351	11,493	31,305	42,798	2,541,149	3,239
Jun	2,489,225	10,643	32,799	43,442	2,532,667	3,041
Jul	2,610,249	10,179	36,016	46,195	2,656,444	3,045
Aug	2,464,953	9,599	31,509	41,108	2,506,061	3,366
Sep	2,506,296	8,747	31,272	40,019	2,546,315	6,023
Oct	2,772,827	10,385	33,059	43,444	2,816,271	6,806
Nov	2,215,656	7,414	26,361	33,775	2,249,431	5,969
Dec	2,490,164	10,029	28,887	38,916	2,529,080	7,391
Total	29,549,667	126,961	367,823	494,784	30,044,451	52,061
Frozen						
Jan	268,662	729	183	912	269,574	6,668
Feb	225,431	563	247	810	226,241	6,089
Mar	251,919	781	171	952	252,871	5,994
Apr	272,150	1,411	228	1,639	273,789	6,364
May	282,828	1,063	170	1,233	284,061	6,253
Jun	270,610	695	391	1,086	271,696	5,793
Jul	277,828	42	262	304	278,132	6,103
Aug	277,354	90	166	256	277,610	5,670
Sep	310,925	68	74	142	311,067	4,559
Oct	279,926	35	257	292	280,218	5,088
Nov	208,282		86	86	208,368	3,972
Dec	273,414	102	57	159	273,573	4,393
Total	3,199,329	5,579	2,292	7,871	3,207,200	66,946
Total Certified						
Jan	2,774,597	14,209	31,002	45,211	2,819,808	10,361
Feb	2,419,476	11,529	28,008	39,537	2,459,013	9,162
Mar	2,592,396	12,003	29,134	41,137	2,633,533	8,966
Apr	2,733,639	14,215	29,300	43,515	2,777,154	9,807
May	2,781,179	12,556	31,475	44,031	2,825,210	9,492
Jun	2,759,835	11,338	33,190	44,528	2,804,363	8,834
Jul	2,888,077	10,221	36,278	46,499	2,934,576	9,148
Aug	2,742,307	9,689	31,675	41,364	2,783,671	9,036
Sep	2,817,221	8,815	31,346	40,161	2,857,382	10,582
Oct	3,052,753	10,420	33,316	43,736	3,096,489	11,894
Nov	2,423,938	7,414	26,447	33,861	2,457,799	9,941
Dec	2,763,578	10,131	28,944	39,075	2,802,653	11,784
Total	32,748,996	132,540	370,115	502,655	33,251,651	119,007

See footnote(s) at end of table.

--continued

**Poultry Slaughter: Chilled and Frozen, Pounds Certified by Type,
by Month and Annual Total, United States, 2003¹ (continued)**

Month	Turkeys			Other Poultry	Total Poultry
	Young	Old	Total		
	<i>1,000 Pounds</i>	<i>1,000 Pounds</i>	<i>1,000 Pounds</i>	<i>1,000 Pounds</i>	<i>1,000 Pounds</i>
Chilled					
Jan	257,580	5,499	263,079	250	2,817,256
Feb	216,258	3,159	219,417	173	2,455,435
Mar	245,724	3,411	249,135	162	2,632,931
Apr	248,011	2,884	250,895	189	2,757,892
May	249,180	4,575	253,755	219	2,798,362
Jun	245,945	4,424	250,369	213	2,786,290
Jul	243,188	6,987	250,175	283	2,909,947
Aug	230,126	4,926	235,052	229	2,744,708
Sep	235,062	4,640	239,702	201	2,792,241
Oct	288,573	4,124	292,697	552	3,116,326
Nov	252,989	3,463	256,452	188	2,512,040
Dec	247,107	2,209	249,316	182	2,785,969
Total	2,959,743	50,301	3,010,044	2,841	33,109,397
Frozen					
Jan	215,986	775	216,761	354	493,357
Feb	211,450	490	211,940	260	444,530
Mar	218,913	417	219,330	295	478,490
Apr	223,121	413	223,534	329	504,016
May	227,637	326	227,963	303	518,580
Jun	231,582	507	232,089	80	509,658
Jul	242,481	887	243,368	104	527,707
Aug	219,161	1,433	220,594	315	504,189
Sep	218,517	1,373	219,890	610	536,126
Oct	234,217	1,526	235,743	712	521,761
Nov	197,275	1,777	199,052	277	411,669
Dec	188,954	1,095	190,049	55	468,070
Total	2,629,294	11,019	2,640,313	3,694	5,918,153
Total Certified					
Jan	473,566	6,274	479,840	604	3,310,613
Feb	427,708	3,649	431,357	433	2,899,965
Mar	464,637	3,828	468,465	457	3,111,421
Apr	471,132	3,297	474,429	518	3,261,908
May	476,817	4,901	481,718	522	3,316,942
Jun	477,527	4,931	482,458	293	3,295,948
Jul	485,669	7,874	493,543	387	3,437,654
Aug	449,287	6,359	455,646	544	3,248,897
Sep	453,579	6,013	459,592	811	3,328,367
Oct	522,790	5,650	528,440	1,264	3,638,087
Nov	450,264	5,240	455,504	465	2,923,709
Dec	436,061	3,304	439,365	237	3,254,039
Total	5,589,037	61,320	5,650,357	6,535	39,027,550

¹ Ready-to-cook weights.

**Poultry Slaughter: Ante-Mortem Condemnations by Type,
by Month and Annual Total, United States, 2003**

	Chickens					Ducks
	Young	Mature			Total	
		Light	Heavy	Total		
	<i>1,000 Pounds</i>	<i>1,000 Pounds</i>	<i>1,000 Pounds</i>	<i>1,000 Pounds</i>	<i>1,000 Pounds</i>	<i>1,000 Pounds</i>
Live Weight Condemned						
Jan	18,994	685	494	1,179	20,173	35
Feb	13,577	513	522	1,035	14,612	22
Mar	13,082	508	349	857	13,939	21
Apr	13,332	614	499	1,113	14,445	34
May	12,705	595	537	1,132	13,837	23
Jun	13,923	543	767	1,310	15,233	31
Jul	17,316	638	1,018	1,656	18,972	28
Aug	16,626	644	1,104	1,748	18,374	32
Sep	12,454	273	478	751	13,205	33
Oct	13,471	343	419	762	14,233	30
Nov	11,049	220	378	598	11,647	24
Dec	14,196	263	358	621	14,817	25
Total	170,725	5,839	6,923	12,762	183,487	338
	<i>Percent</i>	<i>Percent</i>	<i>Percent</i>	<i>Percent</i>	<i>Percent</i>	<i>Percent</i>
Percent of Total Weight Condemned ¹						
Jan	0.50	2.45	1.05	1.57	0.53	0.24
Feb	0.41	2.26	1.22	1.58	0.44	0.17
Mar	0.37	2.15	0.79	1.26	0.39	0.16
Apr	0.36	2.15	1.12	1.52	0.38	0.25
May	0.34	2.41	1.13	1.57	0.36	0.18
Jun	0.37	2.44	1.52	1.80	0.40	0.25
Jul	0.44	3.18	1.84	2.20	0.48	0.22
Aug	0.45	3.34	2.24	2.55	0.49	0.26
Sep	0.33	1.58	1.00	1.15	0.34	0.24
Oct	0.33	1.68	0.83	1.07	0.34	0.20
Nov	0.34	1.49	0.94	1.09	0.35	0.19
Dec	0.38	1.33	0.82	0.98	0.39	0.16
Total	0.39	2.23	1.23	1.55	0.41	0.21

See footnote(s) at end of table.

--continued

**Poultry Slaughter: Ante-Mortem Condemnations by Type,
by Month and Annual Total, United States, 2003 (continued)**

Month	Turkeys			Other Poultry	Total Poultry
	Young	Old	Total		
	<i>1,000 Pounds</i>	<i>1,000 Pounds</i>	<i>1,000 Pounds</i>	<i>1,000 Pounds</i>	<i>1,000 Pounds</i>
Live Weight Condemned					
Jan	2,163	270	2,433	4	22,645
Feb	2,033	114	2,147	4	16,785
Mar	3,079	110	3,189	3	17,152
Apr	1,860	84	1,944	2	16,425
May	1,903	95	1,998	2	15,860
Jun	2,474	85	2,559	1	17,824
Jul	2,582	164	2,746	2	21,748
Aug	2,310	98	2,408	1	20,815
Sep	1,758	89	1,847	4	15,089
Oct	2,593	52	2,645	5	16,913
Nov	1,413	42	1,455	3	13,129
Dec	1,742	35	1,777		16,619
Total	25,910	1,238	27,148	31	211,004
	<i>Percent</i>	<i>Percent</i>	<i>Percent</i>	<i>Percent</i>	<i>Percent</i>
Percent of Total Weight Condemned ¹					
Jan	0.36	3.12	0.40	0.38	0.51
Feb	0.37	2.30	0.39	0.58	0.43
Mar	0.52	2.11	0.54	0.34	0.41
Apr	0.31	1.83	0.32	0.24	0.37
May	0.31	1.42	0.32	0.23	0.35
Jun	0.41	1.30	0.42	0.18	0.40
Jul	0.42	1.60	0.44	0.38	0.47
Aug	0.40	1.14	0.42	0.16	0.48
Sep	0.30	1.13	0.31	0.30	0.34
Oct	0.39	0.74	0.39	0.34	0.35
Nov	0.25	0.62	0.25	0.33	0.33
Dec	0.32	0.80	0.32	0.10	0.38
Total	0.37	1.52	0.38	0.31	0.40

¹ Pounds condemned as a percent of live weight pounds inspected.

**Poultry Slaughter: Post-Mortem Condemnations by Type,
by Month and Annual Total, United States, 2003**

	Chickens					Ducks
	Young	Mature			Total	
		Light	Heavy	Total		
	<i>1,000 Pounds</i>	<i>1,000 Pounds</i>	<i>1,000 Pounds</i>	<i>1,000 Pounds</i>	<i>1,000 Pounds</i>	<i>1,000 Pounds</i>
N.Y. Dressed						
Weight Condemned						
Jan	35,001	2,541	2,050	4,591	39,592	284
Feb	28,675	2,011	1,666	3,677	32,352	272
Mar	31,381	2,011	1,582	3,593	34,974	274
Apr	31,209	2,620	1,810	4,430	35,639	317
May	30,806	2,140	1,517	3,657	34,463	353
Jun	31,333	1,934	1,642	3,576	34,909	275
Jul	30,104	1,658	1,969	3,627	33,731	256
Aug	28,642	1,438	1,534	2,972	31,614	245
Sep	28,513	1,462	1,512	2,974	31,487	279
Oct	31,552	1,655	1,712	3,367	34,919	320
Nov	23,745	1,240	1,228	2,468	26,213	280
Dec	31,295	1,543	1,432	2,975	34,270	348
Total	362,256	22,253	19,654	41,907	404,163	3,503
	<i>Percent</i>	<i>Percent</i>	<i>Percent</i>	<i>Percent</i>	<i>Percent</i>	<i>Percent</i>
Percent Condemned ¹						
Jan	1.03	10.08	4.82	6.78	1.15	2.21
Feb	0.97	9.84	4.32	6.23	1.07	2.34
Mar	0.99	9.47	3.98	5.89	1.09	2.37
Apr	0.94	10.20	4.50	6.72	1.05	2.59
May	0.91	9.64	3.55	5.64	1.00	2.95
Jun	0.93	9.64	3.62	5.47	1.02	2.51
Jul	0.86	9.17	3.96	5.35	0.94	2.25
Aug	0.86	8.30	3.46	4.82	0.93	2.19
Sep	0.84	9.41	3.51	5.07	0.91	2.28
Oct	0.85	8.99	3.76	5.27	0.93	2.33
Nov	0.81	9.37	3.40	5.00	0.87	2.43
Dec	0.93	8.67	3.64	5.20	1.00	2.56
Total	0.91	9.46	3.87	5.64	0.99	2.42

See footnote(s) at end of table.

--continued

**Poultry Slaughter: Post-Mortem Condemnations by Type,
by Month and Annual Total, United States, 2003 (continued)**

Month	Turkeys			Other Poultry	Total Poultry
	Young	Old	Total		
	<i>1,000 Pounds</i>	<i>1,000 Pounds</i>	<i>1,000 Pounds</i>	<i>1,000 Pounds</i>	<i>1,000 Pounds</i>
N.Y. Dressed					
Weight Condemned					
Jan	10,871	579	11,450	16	51,342
Feb	9,729	383	10,112	11	42,747
Mar	11,222	439	11,661	18	46,927
Apr	11,105	363	11,468	17	47,441
May	10,440	386	10,826	13	45,655
Jun	10,012	421	10,433	7	45,624
Jul	9,942	539	10,481	7	44,475
Aug	9,862	428	10,290	9	42,158
Sep	11,087	394	11,481	15	43,262
Oct	11,085	330	11,415	11	46,665
Nov	9,229	272	9,501	7	36,001
Dec	9,189	201	9,390	5	44,013
Total	123,773	4,735	128,508	136	536,310
	<i>Percent</i>	<i>Percent</i>	<i>Percent</i>	<i>Percent</i>	<i>Percent</i>
Percent Condemned ¹					
Jan	2.01	7.45	2.09	1.76	1.28
Feb	1.99	8.57	2.05	1.77	1.21
Mar	2.12	9.35	2.18	2.61	1.25
Apr	2.07	8.85	2.12	2.26	1.20
May	1.91	6.40	1.95	1.66	1.13
Jun	1.84	7.17	1.90	1.89	1.15
Jul	1.80	5.85	1.87	1.25	1.07
Aug	1.92	5.53	1.98	1.14	1.07
Sep	2.11	5.54	2.16	1.18	1.08
Oct	1.86	5.21	1.89	0.87	1.06
Nov	1.80	4.50	1.83	1.03	1.02
Dec	1.85	5.06	1.88	1.64	1.11
Total	1.94	6.45	1.99	1.51	1.14

¹ Pounds condemned as a percent of N.Y. dressed weight inspected.

**Young Chickens Slaughtered: Number, Live Weight, Average Live Weight,
Pounds Certified, and Post-Mortem Condemnations, by Month and
Annual Total, by State, 2003**

State and Month	Number Slaughtered	Live Weight	Average Live Weight	Pounds Certified ¹	Post-Mortem Condemnations	
					NY Dressed Weight	Percent ²
	<i>1,000 Head</i>	<i>1,000 Pounds</i>	<i>Pounds</i>	<i>1,000 Pounds</i>	<i>1,000 Pounds</i>	<i>Percent</i>
Alabama						
Jan	83,948	433,187	5.16	317,530	4,128	1.06
Feb	75,505	387,754	5.14	283,136	3,477	1.00
Mar	81,043	413,490	5.10	301,865	3,426	0.92
Apr	84,934	435,948	5.13	322,060	3,620	0.92
May	85,316	440,453	5.16	316,898	3,718	0.94
Jun	84,060	437,636	5.21	325,266	3,426	0.87
Jul	90,496	463,077	5.12	341,724	3,637	0.87
Aug	87,679	445,989	5.09	329,861	3,798	0.95
Sep	86,747	445,857	5.14	326,436	3,679	0.92
Oct	92,446	484,618	5.24	362,954	3,490	0.80
Nov	75,780	393,574	5.19	291,768	3,001	0.85
Dec	87,561	454,465	5.19	326,230	3,992	0.98
Total	1,015,515	5,236,048	5.16	3,845,728	43,392	0.92
Arkansas						
Jan	96,123	473,527	4.93	342,799	4,270	1.00
Feb	84,465	414,832	4.91	297,867	3,836	1.03
Mar	92,265	453,464	4.91	327,932	4,273	1.05
Apr	98,738	494,012	5.00	357,325	4,728	1.06
May	96,514	480,661	4.98	346,368	3,717	0.86
Jun	95,731	472,641	4.94	342,106	3,573	0.84
Jul	105,831	492,239	4.65	354,925	3,369	0.76
Aug	95,977	470,466	4.90	341,618	3,041	0.72
Sep	98,972	500,729	5.06	365,535	3,146	0.70
Oct	106,709	538,025	5.04	391,591	3,554	0.73
Nov	86,362	429,887	4.98	313,152	2,895	0.75
Dec	95,809	482,376	5.03	350,794	3,728	0.86
Total	1,153,496	5,702,859	4.94	4,132,012	44,130	0.86
Delaware						
Jan	23,666	143,674	6.07	104,477	2,474	1.91
Feb	19,620	119,717	6.10	86,116	1,907	1.77
Mar	21,504	128,485	5.97	93,901	1,985	1.72
Apr	21,768	130,953	6.02	94,793	2,047	1.74
May	22,337	136,147	6.10	98,689	1,912	1.56
Jun	22,701	140,784	6.20	102,005	1,955	1.54
Jul	24,476	153,614	6.28	110,248	2,162	1.56
Aug	23,100	143,158	6.20	102,588	2,038	1.58
Sep	23,332	146,559	6.28	106,207	2,214	1.68
Oct	26,523	165,030	6.22	117,940	2,204	1.48
Nov	20,326	130,998	6.44	94,320	1,548	1.31
Dec	23,721	153,653	6.48	110,006	1,957	1.42
Total	273,074	1,692,772	6.20	1,221,290	24,403	1.60

See footnote(s) at end of table.

--continued

**Young Chickens Slaughtered: Number, Live Weight, Average Live Weight,
Pounds Certified, and Post-Mortem Condemnations, by Month and
Annual Total, by State, 2003 (continued)**

State and Month	Number Slaughtered	Live Weight	Average Live Weight	Pounds Certified ¹	Post-Mortem Condemnations	
					NY Dressed Weight	Percent ²
	<i>1,000 Head</i>	<i>1,000 Pounds</i>	<i>Pounds</i>	<i>1,000 Pounds</i>	<i>1,000 Pounds</i>	<i>Percent</i>
Florida						
Jan	11,086	62,633	5.65	44,314	807	1.43
Feb	8,944	49,274	5.51	35,124	561	1.26
Mar	9,648	54,677	5.67	37,899	590	1.20
Apr	9,835	54,173	5.51	38,252	597	1.23
May	10,067	56,165	5.58	40,393	618	1.22
Jun	9,685	53,290	5.50	38,445	598	1.25
Jul	10,828	59,900	5.53	43,015	699	1.30
Aug	10,273	55,868	5.44	40,677	702	1.40
Sep	10,345	56,226	5.43	40,244	719	1.42
Oct	10,567	58,787	5.56	40,579	576	1.09
Nov	9,328	52,745	5.65	36,823	577	1.22
Dec	10,331	58,087	5.62	41,806	668	1.28
Total	120,937	671,825	5.56	477,571	7,712	1.28
Georgia						
Jan	108,550	545,489	5.03	401,218	3,693	0.75
Feb	90,702	459,704	5.07	335,294	3,090	0.75
Mar	98,252	486,673	4.95	355,909	3,285	0.75
Apr	102,389	511,918	5.00	379,024	3,113	0.68
May	103,584	521,302	5.03	381,649	3,092	0.66
Jun	102,178	512,754	5.02	371,962	3,054	0.66
Jul	108,293	541,108	5.00	394,119	3,596	0.74
Aug	104,516	522,633	5.00	382,053	3,029	0.64
Sep	108,755	543,988	5.00	399,271	3,028	0.62
Oct	114,258	586,061	5.13	428,603	3,822	0.72
Nov	89,376	450,168	5.04	331,256	2,577	0.64
Dec	103,141	520,151	5.04	379,229	4,544	0.97
Total	1,233,994	6,201,949	5.03	4,539,587	39,923	0.72
Kentucky						
Jan	21,423	113,296	5.29	82,752	780	0.77
Feb	19,071	99,542	5.22	73,909	699	0.78
Mar	20,482	107,770	5.26	77,279	741	0.76
Apr	21,609	114,627	5.30	83,601	777	0.75
May	21,236	112,834	5.31	83,595	668	0.66
Jun	21,325	112,156	5.26	83,384	679	0.67
Jul	20,976	109,537	5.22	80,200	658	0.67
Aug	17,640	98,399	5.58	71,165	685	0.77
Sep	17,820	102,232	5.74	72,926	633	0.69
Oct	23,724	131,666	5.55	94,712	848	0.72
Nov	18,311	97,999	5.35	74,445	547	0.62
Dec	21,445	113,478	5.29	83,833	693	0.68
Total	245,062	1,313,536	5.36	961,801	8,408	0.71

See footnote(s) at end of table.

--continued

**Young Chickens Slaughtered: Number, Live Weight, Average Live Weight,
Pounds Certified, and Post-Mortem Condemnations, by Month and
Annual Total, by State, 2003 (continued)**

State and Month	Number Slaughtered	Live Weight	Average Live Weight	Pounds Certified ¹	Post-Mortem Condemnations	
					NY Dressed Weight	Percent ²
	<i>1,000 Head</i>	<i>1,000 Pounds</i>	<i>Pounds</i>	<i>1,000 Pounds</i>	<i>1,000 Pounds</i>	<i>Percent</i>
Louisiana						
Jan	14,397	75,593	5.25	55,541	587	0.86
Feb	13,583	71,580	5.27	51,677	387	0.60
Mar	15,634	80,280	5.13	59,146	433	0.60
Apr	15,616	81,179	5.20	58,564	411	0.56
May	16,259	82,498	5.07	61,061	355	0.48
Jun	14,547	74,060	5.09	55,418	303	0.46
Jul	16,272	80,627	4.95	59,815	301	0.41
Aug	15,862	78,397	4.94	57,438	276	0.39
Sep	14,850	76,182	5.13	56,078	270	0.39
Oct	16,455	84,775	5.15	62,662	274	0.36
Nov	13,979	71,776	5.13	52,153	243	0.38
Dec	16,057	80,837	5.03	59,422	306	0.42
Total	183,511	937,784	5.11	688,975	4,146	0.49
Maryland						
Jan	16,780	79,001	4.71	56,844	1,090	1.53
Feb	14,397	68,057	4.73	48,815	1,000	1.63
Mar	15,763	74,590	4.73	52,732	1,030	1.53
Apr	16,264	78,012	4.80	55,915	1,222	1.74
May	16,278	78,474	4.82	56,278	1,130	1.60
Jun	16,195	76,399	4.72	55,146	1,098	1.60
Jul	14,968	72,560	4.85	52,183	1,009	1.54
Aug	14,697	70,765	4.81	51,194	909	1.43
Sep	14,832	72,526	4.89	51,830	857	1.31
Oct	15,776	79,284	5.03	55,723	859	1.20
Nov	12,701	62,535	4.92	44,722	673	1.20
Dec	15,256	75,484	4.95	53,984	823	1.21
Total	183,907	887,687	4.83	635,366	11,700	1.46
Mississippi						
Jan	61,870	331,372	5.36	246,289	2,130	0.71
Feb	56,460	299,863	5.31	223,348	1,663	0.62
Mar	58,510	311,300	5.32	236,266	2,303	0.82
Apr	60,782	322,491	5.31	239,748	2,471	0.85
May	65,141	339,822	5.22	250,576	2,488	0.81
Jun	61,985	336,134	5.42	248,911	3,956	1.31
Jul	66,852	353,078	5.28	264,805	2,513	0.79
Aug	65,308	335,418	5.14	246,147	2,463	0.82
Sep	65,673	344,256	5.24	268,043	2,391	0.77
Oct	71,114	388,439	5.46	293,440	3,332	0.95
Nov	54,553	295,804	5.42	218,461	2,057	0.77
Dec	63,040	339,449	5.38	253,177	2,300	0.75
Total	751,288	3,997,426	5.32	2,989,211	30,067	0.84

See footnote(s) at end of table.

--continued

**Young Chickens Slaughtered: Number, Live Weight, Average Live Weight,
Pounds Certified, and Post-Mortem Condemnations, by Month and
Annual Total, by State, 2003 (continued)**

State and Month	Number Slaughtered	Live Weight	Average Live Weight	Pounds Certified ¹	Post-Mortem Condemnations	
					NY Dressed Weight	Percent ²
	<i>1,000 Head</i>	<i>1,000 Pounds</i>	<i>Pounds</i>	<i>1,000 Pounds</i>	<i>1,000 Pounds</i>	<i>Percent</i>
Missouri						
Jan	33,184	161,300	4.86	116,382	1,524	1.05
Feb	29,258	139,382	4.76	102,079	1,234	0.98
Mar	29,950	136,081	4.54	99,395	1,338	1.09
Apr	29,997	141,663	4.72	103,646	1,230	0.96
May	32,459	159,293	4.91	113,494	1,061	0.74
Jun	32,217	151,661	4.71	111,512	955	0.70
Jul	34,438	162,148	4.71	118,831	1,090	0.75
Aug	33,600	155,725	4.63	116,042	1,354	0.97
Sep	34,388	156,436	4.55	115,984	953	0.68
Oct	36,308	169,738	4.67	125,503	1,180	0.77
Nov	30,096	139,764	4.64	102,742	855	0.68
Dec	33,957	161,454	4.75	118,642	1,157	0.80
Total	389,852	1,834,645	4.71	1,344,252	13,931	0.84
North Carolina						
Jan	59,798	366,040	6.12	283,307	4,681	1.42
Feb	53,599	320,469	5.98	251,951	3,340	1.16
Mar	55,420	330,951	5.97	260,236	3,994	1.34
Apr	56,101	340,263	6.07	266,992	3,232	1.06
May	61,533	373,669	6.07	293,561	3,793	1.13
Jun	61,039	379,499	6.22	297,158	3,917	1.15
Jul	64,285	389,524	6.06	302,667	3,689	1.05
Aug	59,806	362,403	6.06	281,948	3,393	1.04
Sep	58,965	357,467	6.06	280,450	3,455	1.07
Oct	62,636	384,522	6.14	296,849	3,558	1.03
Nov	50,644	314,690	6.21	241,673	2,827	1.00
Dec	58,668	368,593	6.28	287,021	3,748	1.13
Total	702,494	4,288,090	6.10	3,343,813	43,627	1.13
Ohio						
Jan	3,213	18,869	5.87	13,141	486	2.86
Feb	2,741	15,554	5.67	11,070	368	2.63
Mar	3,006	17,524	5.83	12,336	347	2.20
Apr	3,257	19,375	5.95	13,918	306	1.75
May	3,682	20,547	5.58	15,029	310	1.67
Jun	3,086	16,497	5.35	11,899	218	1.47
Jul	3,635	19,463	5.35	13,985	264	1.51
Aug	3,592	19,003	5.29	13,919	278	1.63
Sep	3,658	19,271	5.27	14,024	289	1.66
Oct	3,761	20,143	5.36	14,501	283	1.56
Nov	3,222	17,324	5.38	12,433	216	1.39
Dec	3,697	19,975	5.40	14,448	246	1.37
Total	40,550	223,545	5.51	160,703	3,611	1.79

See footnote(s) at end of table.

--continued

**Young Chickens Slaughtered: Number, Live Weight, Average Live Weight,
Pounds Certified, and Post-Mortem Condemnations, by Month and
Annual Total, by State, 2003 (continued)**

State and Month	Number Slaughtered	Live Weight	Average Live Weight	Pounds Certified ¹	Post-Mortem Condemnations	
					NY Dressed Weight	Percent ²
	<i>1,000 Head</i>	<i>1,000 Pounds</i>	<i>Pounds</i>	<i>1,000 Pounds</i>	<i>1,000 Pounds</i>	<i>Percent</i>
Pennsylvania						
Jan	9,409	49,576	5.27	34,551	1,010	2.26
Feb	7,928	42,006	5.30	29,074	796	2.11
Mar	8,460	44,008	5.20	31,212	791	2.00
Apr	8,508	44,556	5.24	31,474	707	1.76
May	9,105	48,272	5.30	34,361	700	1.61
Jun	9,094	47,968	5.27	34,598	681	1.58
Jul	9,647	49,196	5.10	35,504	673	1.52
Aug	9,072	46,717	5.15	33,797	620	1.48
Sep	9,582	50,616	5.28	36,192	713	1.57
Oct	10,015	54,718	5.46	38,157	784	1.59
Nov	7,800	41,053	5.26	29,491	596	1.61
Dec	8,952	47,847	5.34	34,020	709	1.65
Total	107,572	566,533	5.27	402,431	8,780	1.72
South Carolina						
Jan	20,845	120,584	5.78	89,184	777	0.72
Feb	17,340	99,739	5.75	73,632	628	0.70
Mar	20,101	115,662	5.75	84,905	625	0.60
Apr	20,739	115,848	5.59	84,178	725	0.70
May	20,721	118,645	5.73	87,520	736	0.69
Jun	20,455	119,757	5.85	86,321	882	0.82
Jul	20,122	115,433	5.74	84,994	716	0.69
Aug	18,819	107,667	5.72	79,383	475	0.49
Sep	20,968	121,645	5.80	86,251	557	0.51
Oct	21,862	129,888	5.94	95,897	651	0.56
Nov	19,059	111,841	5.87	82,657	515	0.51
Dec	19,342	113,287	5.86	83,346	681	0.67
Total	240,373	1,389,996	5.78	1,018,268	7,968	0.64
Tennessee						
Jan	17,939	95,815	5.34	70,179	784	0.91
Feb	16,398	88,223	5.38	64,605	650	0.82
Mar	17,076	87,021	5.10	63,022	1,153	1.47
Apr	18,395	93,862	5.10	68,985	667	0.79
May	18,185	92,103	5.06	67,091	589	0.71
Jun	18,286	94,167	5.15	67,785	566	0.67
Jul	19,878	100,474	5.05	73,129	566	0.63
Aug	18,962	94,376	4.98	67,743	503	0.59
Sep	18,073	93,487	5.17	67,453	561	0.67
Oct	19,438	102,625	5.28	73,950	1,053	1.14
Nov	15,602	81,203	5.20	58,935	566	0.77
Dec	17,949	94,453	5.26	68,690	771	0.91
Total	216,181	1,117,809	5.17	811,567	8,429	0.84

See footnote(s) at end of table.

--continued

**Young Chickens Slaughtered: Number, Live Weight, Average Live Weight,
Pounds Certified, and Post-Mortem Condemnations, by Month and
Annual Total, by State, 2003 (continued)**

State and Month	Number Slaughtered	Live Weight	Average Live Weight	Pounds Certified ¹	Post-Mortem Condemnations	
					NY Dressed Weight	Percent ²
	<i>1,000 Head</i>	<i>1,000 Pounds</i>	<i>Pounds</i>	<i>1,000 Pounds</i>	<i>1,000 Pounds</i>	<i>Percent</i>
Texas						
Jan	53,561	258,251	4.82	197,478	2,083	0.90
Feb	47,673	236,071	4.95	182,567	1,890	0.89
Mar	51,806	254,540	4.91	197,973	1,910	0.83
Apr	54,638	275,626	5.04	211,860	2,041	0.82
May	55,082	271,546	4.93	209,143	2,517	1.03
Jun	52,460	257,400	4.91	202,648	2,087	0.90
Jul	57,486	283,428	4.93	220,901	1,921	0.75
Aug	54,342	268,567	4.94	207,362	1,809	0.75
Sep	54,223	264,294	4.87	211,343	1,597	0.67
Oct	58,293	287,918	4.94	223,419	1,711	0.66
Nov	47,618	233,715	4.91	181,344	1,402	0.67
Dec	53,207	263,410	4.95	205,680	1,652	0.70
Total	640,389	3,154,766	4.93	2,451,718	22,620	0.80
Virginia						
Jan	27,642	135,088	4.89	97,464	1,257	1.03
Feb	24,493	118,915	4.86	86,340	996	0.93
Mar	26,690	129,689	4.86	93,149	1,118	0.96
Apr	28,280	139,009	4.92	101,887	1,173	0.94
May	28,172	137,963	4.90	100,516	1,120	0.90
Jun	28,640	143,002	4.99	103,032	1,130	0.88
Jul	29,328	142,823	4.87	103,296	1,036	0.81
Aug	28,894	140,104	4.85	101,619	1,051	0.83
Sep	27,284	137,074	5.02	96,449	1,022	0.83
Oct	30,052	152,646	5.08	111,337	1,181	0.86
Nov	24,464	118,421	4.84	86,867	929	0.87
Dec	27,155	134,088	4.94	91,057	1,171	0.97
Total	331,094	1,628,822	4.92	1,173,013	13,184	0.90

See footnote(s) at end of table.

--continued

**Young Chickens Slaughtered: Number, Live Weight, Average Live Weight,
Pounds Certified, and Post-Mortem Condemnations, by Month and
Annual Total, by State, 2003**

State and Month	Number Slaughtered	Live Weight	Average Live Weight	Pounds Certified ¹	Post-Mortem Condemnations	
					NY Dressed Weight	Percent ²
	<i>1,000 Head</i>	<i>1,000 Pounds</i>	<i>Pounds</i>	<i>1,000 Pounds</i>	<i>1,000 Pounds</i>	<i>Percent</i>
Washington						
Jan	*	*	*	*	*	*
Feb	*	*	*	*	*	*
Mar	*	*	*	*	*	*
Apr	*	*	*	*	*	*
May	*	*	*	*	*	*
Jun	4,900	26,694	5.5	19,456	285	1.19
Jul	*	*	*	*	*	*
Aug	5,039	26,666	5.3	19,887	289	1.20
Sep	4,707	25,136	5.3	18,793	288	1.27
Oct	5,086	26,795	5.3	19,990	277	1.15
Nov	*	*	*	*	*	*
Dec	*	*	*	*	*	*
Total	56,842	304,680	5.4	225,602	3,397	1.24
Other States ³						
Jan	61,744	299,566	4.9	221,147	2,440	0.91
Feb	51,737	256,519	5.0	182,872	2,153	0.93
Mar	57,575	279,147	4.9	207,239	2,039	0.81
Apr	61,027	298,541	4.9	221,417	2,142	0.80
May	61,607	304,030	4.9	224,957	2,282	0.83
Jun	56,020	275,700	4.9	202,783	1,970	0.79
Jul	65,065	317,930	4.9	233,736	2,205	0.77
Aug	56,608	273,716	4.8	197,866	1,929	0.78
Sep	56,006	277,288	5.0	203,712	2,141	0.86
Oct	56,883	277,091	4.9	204,946	1,915	0.77
Nov	47,453	230,624	4.9	170,696	1,721	0.83
Dec	56,119	275,996	4.9	202,193	2,149	0.87
Total ⁴	650,734	3,166,759	4.9	2,326,088	25,828	0.80

* Included in "Other States" to avoid disclosing individual operations.

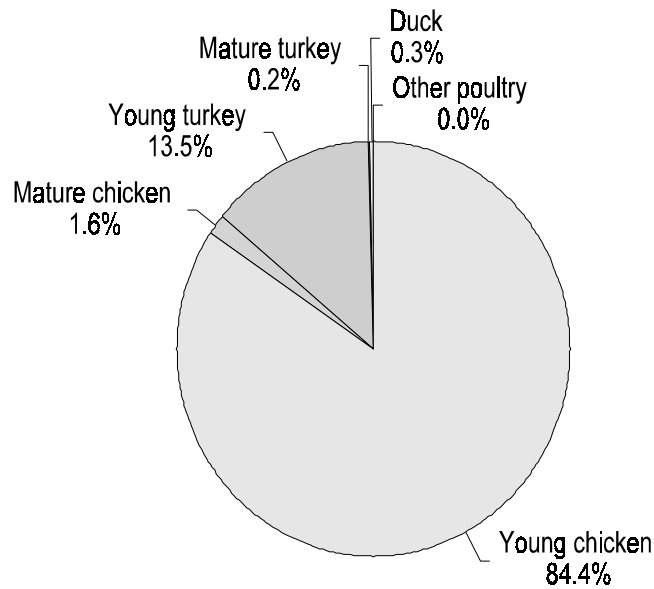
¹ Total chilled and frozen pounds certified, ready-to-cook weights.

² Pounds condemned as a percent of N.Y. dressed weight inspected.

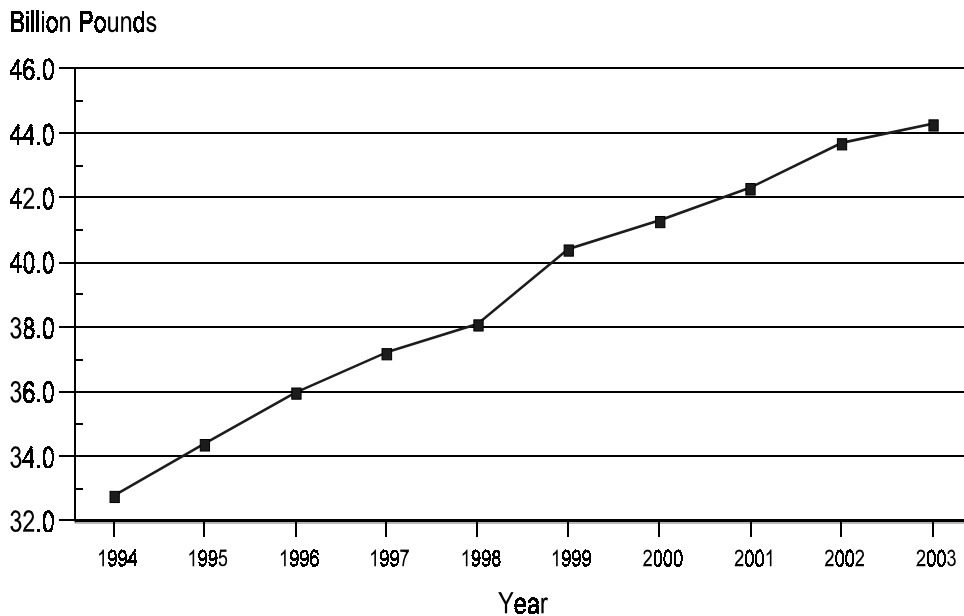
³ Sum of confidential figures replaced by an asterisk (*) in the States listed above.

⁴ Totals for States with chicken slaughter not listed above to avoid disclosing individual operations (CA, CO, HI, IL, IN, IA, KS, MN, NE, NJ, NY, OK, OR, VT, WA, WV, and WI).

Total Live Weight of Poultry Slaughtered Under Federal Inspection, U.S., 2003 Percent of Total



Total Live Weight of Young Chickens Slaughtered Under Federal Inspection, U.S., 1994-2003



**Young Chickens Slaughtered: Number Condemned Post-Mortem by Cause,
by Month and Annual Total, by State and United States, 2003**

State and Month	Tuber- culosis	Leukosis	Septicemia	Airsac- culitis	Synovitis	Tumors
	<i>Number of Head</i>	<i>Number of Head</i>	<i>Number of Head</i>	<i>Number of Head</i>	<i>Number of Head</i>	<i>Number of Head</i>
Alabama						
Jan		*	133,575	76,263	1,064	*
Feb		*	109,950	74,884	1,189	*
Mar		*	108,205	54,059	1,375	*
Apr		733	113,416	45,681	*	*
May		534	119,595	39,129	*	*
Jun		*	108,308	28,371	2,198	*
Jul		479	117,813	27,214	*	*
Aug		499	111,634	32,511	*	*
Sep		517	107,337	25,773	*	*
Oct		676	107,227	30,069	*	*
Nov		*	92,778	31,327	*	*
Dec		*	120,316	52,759	1,412	*
Total		6,884	1,350,154	518,040	23,173	55,475
Arkansas						
Jan		4,299	217,939	122,047	3,799	3,212
Feb		4,414	192,004	110,427	4,307	2,837
Mar		3,846	208,853	123,147	4,006	2,879
Apr		2,974	195,988	99,962	4,022	3,357
May		*	166,239	74,371	*	2,595
Jun		1,419	154,858	59,981	3,226	2,289
Jul		1,343	155,570	59,687	3,009	2,298
Aug		1,380	145,313	55,608	2,818	2,040
Sep		1,014	140,786	54,258	*	2,145
Oct		*	158,857	66,452	*	2,442
Nov		993	128,932	58,440	2,545	1,841
Dec		1,133	168,766	94,133	3,325	2,344
Total		25,719	2,034,105	978,513	41,538	30,279
California						
Jan		*	*	4,259	505	867
Feb		1,251	*	4,351	*	733
Mar		1,388	*	3,994	300	944
Apr		*	*	4,567	497	911
May		*	*	4,898	378	898
Jun		*	90,569	*	463	700
Jul		1,114	*	3,488	694	609
Aug		*	*	*	373	560
Sep		*	*	3,166	384	859
Oct		*	*	3,795	348	682
Nov		*	73,554	4,763	*	677
Dec		*	75,098	5,303	789	739
Total		16,412	1,083,602	50,386	5,410	9,179

See footnote(s) at end of table.

--continued

**Young Chickens Slaughtered: Number Condemned Post-Mortem by Cause,
by Month and Annual Total, by State and United States, 2003 (continued)**

State and Month	Bruises	Cadaver	Contami- nation	Overscald	Other	Total All Causes
	<i>Number of Head</i>	<i>Number of Head</i>	<i>Number of Head</i>	<i>Number of Head</i>	<i>Number of Head</i>	<i>Number of Head</i>
Alabama						
Jan	4,552	27,195	28,967	4,775	107,239	390,783
Feb	3,973	21,029	22,362	6,428	89,517	336,045
Mar	4,294	22,490	21,207	7,652	85,961	311,103
Apr	4,374	24,817	28,980	6,565	87,238	319,181
May	4,863	23,554	35,679	11,311	82,071	324,288
Jun	4,472	25,867	28,593	7,408	77,114	287,051
Jul	4,811	31,044	30,508	11,961	71,192	302,009
Aug	4,390	26,188	25,102	6,790	93,046	306,424
Sep	4,171	22,514	19,193	5,026	72,758	263,522
Oct	3,671	24,444	19,002	6,269	80,433	277,873
Nov	3,229	18,135	16,650	5,872	70,482	243,473
Dec	3,634	21,519	21,377	8,064	102,268	336,264
Total	50,434	288,796	297,620	88,121	1,019,319	3,698,016
Arkansas						
Jan	7,460	29,766	30,331	1,617	46,785	467,255
Feb	6,319	20,645	26,882	3,609	41,447	412,891
Mar	7,120	18,524	27,750	2,790	47,974	446,889
Apr	6,984	18,425	30,266	3,399	49,905	415,282
May	6,309	16,562	27,688	*	37,001	338,340
Jun	6,904	15,878	29,599	4,450	35,671	314,275
Jul	7,502	16,420	30,724	3,615	35,491	315,659
Aug	6,842	13,627	26,845	2,356	33,212	290,041
Sep	6,487	15,582	24,139	*	37,910	286,812
Oct	6,957	18,272	27,496	3,112	38,709	327,027
Nov	5,908	15,935	24,706	2,494	34,716	276,510
Dec	6,574	19,094	26,261	3,044	41,678	366,352
Total	81,366	218,730	332,687	33,897	480,499	4,257,333
California						
Jan	364	*	2,034	*	2,994	137,602
Feb	202	*	1,677	803	3,626	109,943
Mar	231	*	1,777	*	3,459	*
Apr	489	*	2,030	*	4,909	*
May	438	6,712	2,115	*	6,456	121,958
Jun	364	8,097	1,986	*	*	118,028
Jul	328	7,951	2,679	*	*	121,875
Aug	302	*	*	*	*	142,217
Sep	519	*	2,281	*	*	123,430
Oct	*	*	2,286	*	*	114,230
Nov	*	*	1,698	*	*	104,106
Dec	*	5,830	*	*	14,573	109,454
Total	8,058	75,855	24,184	21,587	140,103	1,434,776

See footnote(s) at end of table.

--continued

**Young Chickens Slaughtered: Number Condemned Post-Mortem by Cause,
by Month and Annual Total, by State and United States, 2003 (continued)**

State and Month	Tuber- culosis	Leukosis	Septicemia	Airsac- culitis	Synovitis	Tumors
	<i>Number of Head</i>	<i>Number of Head</i>	<i>Number of Head</i>	<i>Number of Head</i>	<i>Number of Head</i>	<i>Number of Head</i>
Delaware						
Jan		3,946	130,363	45,767	86	9,153
Feb		3,965	99,418	40,993	*	*
Mar		6,311	92,247	42,660	*	*
Apr		*	97,970	35,240	91	*
May		7,364	94,028	29,609	*	*
Jun		6,898	101,231	30,176	*	*
Jul		4,263	112,604	24,971	82	6,227
Aug		1,954	106,299	21,588	45	*
Sep		*	130,149	23,600	40	*
Oct		1,076	133,885	33,200	*	*
Nov		753	81,634	26,991	*	*
Dec		3,262	104,241	44,792	*	*
Total		47,153	1,284,069	399,587	1,548	77,026
Florida						
Jan		142	*	*	*	*
Feb		85	*	*	*	*
Mar		104	*	*	*	*
Apr		143	*	*	*	*
May		86	*	*	*	*
Jun		99	*	*	*	*
Jul		97	*	*	*	*
Aug		117	*	8,837	*	*
Sep		*	*	*	*	*
Oct		94	*	*	*	*
Nov		86	*	*	*	*
Dec		*	*	*	*	*
Total		1,348	221,413	104,974	9,847	61,706
Georgia						
Jan		682	105,566	90,326	376	5,839
Feb		352	79,490	86,947	271	4,606
Mar		368	86,259	80,905	220	5,539
Apr		642	82,293	52,914	298	4,817
May		389	86,903	46,619	425	3,533
Jun		425	79,957	44,226	457	3,226
Jul		1,203	86,291	37,732	482	3,537
Aug		423	86,901	39,425	497	3,699
Sep		*	88,688	36,770	*	3,791
Oct		362	86,755	43,103	518	4,043
Nov		*	68,120	34,842	*	3,524
Dec		516	82,090	48,539	471	3,876
Total		6,097	1,019,313	642,348	5,234	50,030

See footnote(s) at end of table.

--continued

**Young Chickens Slaughtered: Number Condemned Post-Mortem by Cause,
by Month and Annual Total, by State and United States, 2003 (continued)**

State and Month	Bruises	Cadaver	Contami- nation	Overscald	Other	Total All Causes
	<i>Number of Head</i>	<i>Number of Head</i>	<i>Number of Head</i>	<i>Number of Head</i>	<i>Number of Head</i>	<i>Number of Head</i>
Delaware						
Jan	2,937	17,548	13,000	2,273	25,978	251,051
Feb	2,173	12,490	8,733	2,912	19,202	197,305
Mar	2,369	12,146	11,010	*	24,569	205,501
Apr	2,337	17,884	11,429	*	34,360	219,175
May	2,295	15,465	11,293	5,969	27,380	199,246
Jun	2,607	13,570	11,270	3,860	26,138	201,720
Jul	3,053	18,552	14,020	8,052	24,448	216,272
Aug	2,729	21,675	14,130	*	18,727	199,274
Sep	2,681	22,294	14,994	*	21,906	228,890
Oct	2,817	17,058	12,012	3,645	24,862	235,405
Nov	1,679	12,142	8,870	1,660	18,389	157,178
Dec	2,004	17,905	9,926	2,311	23,771	213,754
Total	29,681	198,729	140,687	56,561	289,730	2,524,771
Florida						
Jan	*	3,930	*	*	16,359	74,591
Feb	*	3,490	*	365	15,858	57,022
Mar	*	3,405	*	495	13,958	52,344
Apr	*	2,902	3,069	532	13,658	51,664
May	*	3,322	3,223	*	14,635	49,908
Jun	*	*	2,727	*	13,273	48,097
Jul	*	3,591	*	830	14,523	54,561
Aug	*	3,769	*	714	13,068	58,307
Sep	923	4,293	*	3,412	11,124	70,361
Oct	960	*	*	498	*	53,041
Nov	953	3,902	*	1,493	*	53,705
Dec	*	3,865	*	*	12,754	61,568
Total	13,601	43,401	52,677	14,615	161,587	685,169
Georgia						
Jan	4,846	45,689	25,180	6,384	120,039	404,927
Feb	3,188	30,876	14,044	2,320	87,436	309,530
Mar	3,555	32,428	20,794	3,474	83,816	317,358
Apr	3,891	31,602	17,705	6,280	71,561	272,003
May	4,127	31,077	20,408	5,639	58,986	258,106
Jun	3,641	30,706	20,060	5,041	48,760	236,499
Jul	4,051	33,060	15,873	8,675	49,694	240,598
Aug	3,978	28,810	15,023	11,264	39,948	229,968
Sep	3,489	29,947	19,238	5,748	38,905	227,731
Oct	3,555	40,155	19,124	7,582	50,565	255,762
Nov	2,663	29,990	8,880	5,554	45,979	200,351
Dec	3,213	35,976	11,399	4,323	71,725	262,128
Total	44,197	400,316	207,728	72,284	767,414	3,214,961

See footnote(s) at end of table.

--continued

**Young Chickens Slaughtered: Number Condemned Post-Mortem by Cause,
by Month and Annual Total, by State and United States, 2003 (continued)**

State and Month	Tuber- culosis	Leukosis	Septicemia	Airsac- culitis	Synovitis	Tumors
	<i>Number of Head</i>	<i>Number of Head</i>	<i>Number of Head</i>	<i>Number of Head</i>	<i>Number of Head</i>	<i>Number of Head</i>
Indiana						
Jan		*	*	*	*	*
Feb		20	*	*	*	*
Mar		16	6,825	*	*	127
Apr		*	5,868	*	*	122
May		*	*	*	*	*
Jun		*	5,134	*	*	*
Jul		*	4,927	*	*	*
Aug		*	4,217	*	*	*
Sep		*	5,366	*	*	*
Oct		*	5,811	*	*	*
Nov		*	5,344	*	*	*
Dec		*	6,566	*	*	*
Total		674	70,662	71,906	2,041	1,230
Kentucky						
Jan		*	28,974	*	*	2,377
Feb		*	27,735	*	47	*
Mar		*	31,023	16,825	65	*
Apr		84	34,116	14,910	50	*
May		*	29,540	9,380	35	*
Jun		*	30,241	7,437	24	1,843
Jul		*	34,864	*	55	2,110
Aug		*	44,567	*	38	2,361
Sep		*	34,642	7,252	*	*
Oct		*	37,973	9,953	17	*
Nov		*	30,189	9,586	31	*
Dec		*	34,092	*	49	*
Total		1,551	397,956	154,103	556	28,709
Louisiana						
Jan		*	14,812	9,201	*	211
Feb		*	14,716	9,964	*	169
Mar		*	15,496	10,302	128	264
Apr		*	14,422	8,455	127	258
May		*	14,412	6,283	102	176
Jun		*	13,516	4,688	90	76
Jul		*	13,945	4,402	*	145
Aug		*	15,456	4,112	151	175
Sep		*	13,965	4,732	*	130
Oct		*	13,499	3,620	59	151
Nov		195	11,593	3,259	*	108
Dec		*	14,023	5,316	*	140
Total		1,687	169,855	74,334	1,043	2,003

See footnote(s) at end of table.

--continued

**Young Chickens Slaughtered: Number Condemned Post-Mortem by Cause,
by Month and Annual Total, by State and United States, 2003 (continued)**

State and Month	Bruises	Cadaver	Contami- nation	Overscald	Other	Total All Causes
	<i>Number of Head</i>	<i>Number of Head</i>	<i>Number of Head</i>	<i>Number of Head</i>	<i>Number of Head</i>	<i>Number of Head</i>
Indiana						
Jan	133	*	*	*	*	20,209
Feb	*	*	*	*	*	15,941
Mar	64	*	*	*	*	13,713
Apr	92	*	*	7	*	*
May	87	*	*	*	*	*
Jun	*	*	*	*	*	*
Jul	121	*	282	*	*	*
Aug	*	*	*	*	*	*
Sep	*	*	199	*	*	*
Oct	124	*	246	*	*	*
Nov	*	*	387	*	*	*
Dec	83	*	*	*	*	*
Total	1,106	17,080	3,018	946	19,970	188,633
Kentucky						
Jan	173	10,836	2,759	399	6,205	73,617
Feb	163	8,315	*	468	5,482	70,508
Mar	187	8,164	*	*	*	72,732
Apr	165	10,311	*	738	*	80,054
May	172	11,440	*	*	6,052	65,268
Jun	182	11,390	*	1,933	*	66,208
Jul	261	10,190	*	*	3,546	65,303
Aug	230	9,630	*	*	3,486	72,268
Sep	163	11,124	*	1,273	2,620	64,735
Oct	185	10,409	*	*	4,057	70,870
Nov	147	6,367	2,408	*	3,691	55,313
Dec	201	8,697	3,651	960	4,286	72,998
Total	2,229	116,873	51,305	10,238	66,354	829,874
Louisiana						
Jan	365	2,996	4,225	237	*	35,610
Feb	398	2,760	4,103	*	*	35,573
Mar	338	2,957	2,461	*	2,364	35,383
Apr	324	2,750	*	*	*	34,181
May	434	3,177	2,736	*	2,045	29,866
Jun	315	1,763	2,175	*	1,576	24,721
Jul	464	2,450	*	*	1,776	26,754
Aug	513	2,700	2,643	*	1,610	28,841
Sep	408	*	*	*	1,572	29,407
Oct	328	2,760	*	*	1,194	27,302
Nov	284	*	*	*	1,853	24,199
Dec	450	3,654	*	*	*	28,650
Total	4,621	35,172	35,689	11,494	24,589	360,487

See footnote(s) at end of table.

--continued

**Young Chickens Slaughtered: Number Condemned Post-Mortem by Cause,
by Month and Annual Total, by State and United States, 2003 (continued)**

State and Month	Tuber- culosis	Leukosis	Septicemia	Airsac- culitis	Synovitis	Tumors
	<i>Number of Head</i>	<i>Number of Head</i>	<i>Number of Head</i>	<i>Number of Head</i>	<i>Number of Head</i>	<i>Number of Head</i>
Maryland						
Jan		2,524	70,713	41,772	*	*
Feb		2,057	57,300	41,550	*	5,427
Mar		4,384	62,649	36,220	*	*
Apr		4,181	65,322	36,547	*	6,230
May		2,820	64,653	25,473	86	5,879
Jun		3,792	60,186	23,967	79	*
Jul		1,821	58,888	18,753	88	*
Aug		1,200	52,499	14,854	52	5,035
Sep		1,458	48,953	14,513	*	4,695
Oct		*	49,761	21,406	*	*
Nov		783	39,313	17,389	47	3,160
Dec		*	50,197	22,175	*	3,904
Total		30,167	680,434	314,619	1,518	62,575
Mississippi						
Jan		238	57,851	57,743	293	1,648
Feb		150	55,574	39,664	399	1,160
Mar		224	66,328	38,356	435	1,090
Apr		338	64,841	40,457	425	960
May		*	63,152	22,894	276	897
Jun		224	63,163	15,737	405	617
Jul		*	76,008	18,795	412	700
Aug		275	71,787	23,115	434	604
Sep		286	74,348	22,977	376	757
Oct		*	73,353	20,834	487	674
Nov		530	55,195	20,369	349	584
Dec		227	61,918	32,672	345	549
Total		3,283	783,518	353,613	4,636	10,240
Missouri						
Jan		1,538	106,799	89,655	772	*
Feb		1,077	104,269	*	620	*
Mar		1,101	105,194	*	652	*
Apr		1,076	98,503	*	672	*
May		952	77,522	*	601	*
Jun		983	68,829	*	625	*
Jul		936	73,483	18,133	*	*
Aug		830	69,548	14,687	*	*
Sep		977	63,989	10,485	*	*
Oct		3,302	88,072	14,103	798	*
Nov		1,313	52,040	13,391	397	*
Dec		1,530	70,490	22,205	*	*
Total		15,615	978,738	404,231	9,088	29,334

See footnote(s) at end of table.

--continued

**Young Chickens Slaughtered: Number Condemned Post-Mortem by Cause,
by Month and Annual Total, by State and United States, 2003 (continued)**

State and Month	Bruises	Cadaver	Contami- nation	Overscald	Other	Total All Causes
	<i>Number of Head</i>	<i>Number of Head</i>	<i>Number of Head</i>	<i>Number of Head</i>	<i>Number of Head</i>	<i>Number of Head</i>
Maryland						
Jan	*	25,511	*	*	21,516	197,223
Feb	1,673	20,289	*	1,458	18,686	169,344
Mar	1,956	19,182	*	2,671	20,225	178,729
Apr	1,913	18,220	*	*	22,627	179,461
May	1,697	20,698	*	*	16,529	168,075
Jun	1,826	24,952	*	1,948	16,747	164,197
Jul	1,611	22,194	*	1,727	*	153,189
Aug	*	17,366	*	3,741	*	128,754
Sep	*	16,041	*	2,276	12,004	123,276
Oct	*	14,374	*	*	12,559	127,803
Nov	*	8,618	*	*	13,599	102,793
Dec	*	18,392	*	1,198	16,322	140,061
Total	20,797	225,837	269,232	28,736	198,990	1,832,905
Mississippi						
Jan	2,793	13,903	9,874	438	59,807	204,588
Feb	2,572	12,504	8,198	237	45,515	165,973
Mar	2,980	10,296	8,938	431	56,658	185,736
Apr	2,959	12,644	9,460	777	62,537	195,398
May	3,246	18,499	*	*	50,776	173,958
Jun	3,887	19,426	15,052	609	39,263	158,383
Jul	4,042	15,170	16,139	*	36,804	169,632
Aug	3,904	19,937	15,179	613	34,334	170,182
Sep	3,607	21,468	18,928	1,055	44,875	188,677
Oct	3,434	21,529	*	488	45,105	188,920
Nov	2,533	17,207	12,097	743	50,161	159,768
Dec	2,706	17,742	11,048	406	46,036	173,649
Total	38,663	200,325	159,665	9,050	571,871	2,134,864
Missouri						
Jan	1,362	15,093	11,532	*	39,222	271,667
Feb	1,151	12,535	10,677	918	29,196	211,619
Mar	1,116	11,481	11,384	1,042	34,518	249,361
Apr	1,152	11,903	9,580	281	37,345	210,046
May	1,428	13,384	10,529	975	37,007	172,797
Jun	1,391	11,936	11,142	762	29,338	146,027
Jul	1,845	17,590	14,077	1,249	38,544	168,718
Aug	1,720	14,535	16,155	1,259	34,035	155,223
Sep	1,541	9,739	12,710	1,034	30,526	133,631
Oct	1,288	8,953	13,425	*	28,430	161,423
Nov	1,050	*	9,149	*	20,665	108,346
Dec	1,277	*	9,633	534	23,496	148,946
Total	16,321	151,092	139,993	11,070	382,322	2,137,804

See footnote(s) at end of table.

--continued

**Young Chickens Slaughtered: Number Condemned Post-Mortem by Cause,
by Month and Annual Total, by State and United States, 2003 (continued)**

State and Month	Tuber- culosis	Leukosis	Septicemia	Airsac- culitis	Synovitis	Tumors
	<i>Number of Head</i>	<i>Number of Head</i>	<i>Number of Head</i>	<i>Number of Head</i>	<i>Number of Head</i>	<i>Number of Head</i>
New Jersey						
Jan		*	*	*	*	*
Feb		*	*	*	4	*
Mar		*	*	*	*	*
Apr		*	*	*	*	*
May		5	*	*	*	*
Jun		*	*	*	*	*
Jul		*	*	*	*	*
Aug		*	*	*	*	*
Sep		*	*	*	*	*
Oct		*	*	*	*	*
Nov		*	*	*	*	*
Dec		*	*	*	*	*
Total		251	20,542	7,698	65	1,742
New York						
Jan		242	*	*	*	*
Feb		208	*	*	154	*
Mar		249	*	*	*	*
Apr		177	*	*	131	*
May		280	*	*	144	*
Jun		192	*	*	*	*
Jul		246	*	*	162	*
Aug		*	*	*	*	*
Sep		146	*	*	*	*
Oct		140	*	*	*	*
Nov		*	*	*	*	*
Dec		217	*	*	*	*
Total		2,381	44,760	17,438	2,141	1,611
North Carolina						
Jan		584	112,344	86,975	*	*
Feb		*	95,101	74,490	71	*
Mar		633	94,237	58,334	*	*
Apr		818	90,649	47,676	*	*
May		*	97,634	40,099	78	*
Jun		855	94,463	46,165	*	*
Jul		771	96,050	32,114	*	*
Aug		386	87,223	30,069	*	*
Sep		606	86,173	27,853	206	15,600
Oct		996	90,581	38,308	*	*
Nov		499	72,666	32,833	129	12,951
Dec		714	93,249	70,420	109	15,713
Total		10,507	1,110,370	585,336	2,051	196,751

See footnote(s) at end of table.

--continued

**Young Chickens Slaughtered: Number Condemned Post-Mortem by Cause,
by Month and Annual Total, by State and United States, 2003 (continued)**

State and Month	Bruises	Cadaver	Contami- nation	Overscald	Other	Total All Causes
	<i>Number of Head</i>	<i>Number of Head</i>	<i>Number of Head</i>	<i>Number of Head</i>	<i>Number of Head</i>	<i>Number of Head</i>
New Jersey						
Jan	*	*	*	*	*	*
Feb	*	*	*	*	*	*
Mar	*	*	*	*	*	*
Apr	*	*	*	*	*	*
May	*	*	*	*	*	*
Jun	*	*	*	*	*	*
Jul	*	*	*	*	*	*
Aug	*	*	*	*	*	*
Sep	*	*	*	2	*	*
Oct	*	*	*	*	*	*
Nov	*	*	*	*	*	*
Dec	*	*	*	*	*	*
Total	8,992	2,521	56,484	302	14,342	112,939
New York						
Jan	747	*	3,578	196	*	*
Feb	551	*	2,984	*	*	*
Mar	*	*	2,643	*	*	*
Apr	730	*	2,965	*	*	*
May	676	*	3,389	*	*	*
Jun	584	187	2,754	312	*	*
Jul	762	*	3,314	402	*	*
Aug	787	*	3,214	315	*	*
Sep	885	*	3,832	380	*	*
Oct	729	*	3,816	232	*	*
Nov	*	*	2,587	343	*	*
Dec	*	*	3,094	338	*	*
Total	8,590	3,803	38,170	3,477	36,516	158,887
North Carolina						
Jan	4,537	29,904	21,590	4,891	82,665	361,506
Feb	3,692	24,245	16,527	5,089	76,041	315,032
Mar	3,477	19,709	18,018	5,618	58,152	278,060
Apr	4,076	24,447	18,302	6,129	70,849	278,174
May	4,633	28,439	20,723	7,655	*	319,814
Jun	4,345	27,220	21,183	9,852	*	363,807
Jul	4,640	27,248	26,421	10,901	92,954	307,544
Aug	4,138	24,216	21,325	7,308	76,284	267,124
Sep	4,047	27,004	21,140	5,368	65,343	253,340
Oct	4,023	28,969	19,926	6,422	79,934	288,231
Nov	3,150	21,438	15,036	4,590	80,430	243,722
Dec	3,568	32,626	16,753	5,537	111,271	349,960
Total	48,326	315,465	236,944	79,360	1,041,204	3,626,314

See footnote(s) at end of table.

--continued

**Young Chickens Slaughtered: Number Condemned Post-Mortem by Cause,
by Month and Annual Total, by State and United States, 2003 (continued)**

State and Month	Tuber- culosis	Leukosis	Septicemia	Airsac- culitis	Synovitis	Tumors
	<i>Number of Head</i>	<i>Number of Head</i>	<i>Number of Head</i>	<i>Number of Head</i>	<i>Number of Head</i>	<i>Number of Head</i>
Ohio						
Jan		*	24,985	2,875	*	*
Feb		*	19,482	*	*	*
Mar		*	20,918	*	*	*
Apr		*	19,848	*	*	*
May		*	19,365	*	52	228
Jun		*	12,922	*	*	*
Jul		*	16,150	1,969	53	1,322
Aug		97	15,099	*	*	*
Sep		*	17,411	*	*	*
Oct		104	17,783	2,224	29	*
Nov		*	15,638	2,150	*	*
Dec		29	18,824	2,672	21	*
Total		12,852	218,425	29,134	626	6,391
Pennsylvania						
Jan		198	33,671	24,106	240	*
Feb		*	23,084	20,360	216	*
Mar		255	21,702	18,064	228	511
Apr		*	19,298	14,040	161	386
May		*	18,214	11,744	140	321
Jun		203	17,072	10,540	128	259
Jul		*	17,269	9,355	170	310
Aug		*	17,303	7,921	91	283
Sep		126	18,854	8,095	*	402
Oct		99	18,810	9,930	98	494
Nov		116	15,572	8,687	*	436
Dec		219	23,350	15,946	120	487
Total		5,590	244,199	158,788	1,759	5,219
South Carolina						
Jan		162	24,830	*	28	1,278
Feb		68	17,624	*	12	942
Mar		*	17,069	13,811	14	944
Apr		57	17,395	12,263	*	1,042
May		53	16,032	11,091	*	*
Jun		93	16,648	*	27	1,020
Jul		*	13,602	9,231	*	*
Aug		*	11,258	6,208	116	*
Sep		*	*	*	*	*
Oct		*	14,401	*	*	*
Nov		83	*	*	*	871
Dec		*	*	*	40	862
Total		1,294	191,411	162,608	1,566	12,902

See footnote(s) at end of table.

--continued

**Young Chickens Slaughtered: Number Condemned Post-Mortem by Cause,
by Month and Annual Total, by State and United States, 2003 (continued)**

State and Month	Bruises	Cadaver	Contami- nation	Overscald	Other	Total All Causes
	<i>Number of Head</i>	<i>Number of Head</i>	<i>Number of Head</i>	<i>Number of Head</i>	<i>Number of Head</i>	<i>Number of Head</i>
Ohio						
Jan	290	*	1,664	*	*	48,218
Feb	184	*	952	*	*	37,215
Mar	*	*	*	*	*	37,793
Apr	142	*	*	*	*	32,803
May	186	*	852	*	*	36,281
Jun	120	*	*	*	*	24,568
Jul	133	1,399	*	*	*	31,661
Aug	*	942	*	*	*	30,737
Sep	*	964	*	*	*	32,152
Oct	*	*	*	*	*	36,483
Nov	*	690	*	*	*	30,415
Dec	*	577	*	*	*	31,550
Total	2,132	20,942	11,413	2,040	105,921	409,876
Pennsylvania						
Jan	1,439	*	6,147	289	*	100,624
Feb	1,093	3,450	4,818	133	*	74,710
Mar	1,101	*	4,616	99	*	67,272
Apr	1,085	*	*	72	12,176	54,642
May	1,280	2,838	4,523	*	*	53,068
Jun	1,114	3,212	4,045	104	13,698	50,375
Jul	1,117	4,329	4,705	373	*	50,463
Aug	1,001	2,692	4,581	580	*	49,861
Sep	953	2,686	4,684	203	*	47,495
Oct	1,000	3,032	4,902	*	*	51,454
Nov	805	2,566	*	129	*	43,361
Dec	1,377	4,855	3,576	936	14,303	65,169
Total	13,365	43,173	54,784	3,879	177,738	708,494
South Carolina						
Jan	849	*	*	2,609	6,640	77,370
Feb	*	*	1,643	2,179	*	53,952
Mar	*	4,267	1,888	4,098	5,364	48,627
Apr	*	4,632	1,930	1,941	4,900	45,266
May	920	4,706	1,914	*	*	47,534
Jun	*	4,862	1,874	*	4,371	53,394
Jul	*	*	*	*	3,670	40,907
Aug	*	4,697	*	*	2,298	31,169
Sep	703	*	*	*	*	50,307
Oct	598	6,173	1,545	*	4,256	41,056
Nov	431	5,072	*	*	3,309	*
Dec	337	4,027	*	*	*	*
Total	9,122	65,321	23,265	45,723	83,565	596,777

See footnote(s) at end of table.

--continued

**Young Chickens Slaughtered: Number Condemned Post-Mortem by Cause,
by Month and Annual Total, by State and United States, 2003 (continued)**

State and Month	Tuber- culosis	Leukosis	Septicemia	Airsac- culitis	Synovitis	Tumors
	<i>Number of Head</i>	<i>Number of Head</i>	<i>Number of Head</i>	<i>Number of Head</i>	<i>Number of Head</i>	<i>Number of Head</i>
Tennessee						
Jan		*	43,177	10,844	253	1,169
Feb		*	39,120	11,512	161	738
Mar		*	44,605	12,830	216	*
Apr		*	45,963	10,185	143	727
May		*	41,233	7,487	*	443
Jun		177	36,059	6,058	125	412
Jul		124	35,057	6,806	117	341
Aug		66	32,527	6,532	*	330
Sep		84	33,073	7,434	102	384
Oct		125	39,324	8,806	*	374
Nov		108	29,347	7,816	117	451
Dec		104	40,543	11,087	136	*
Total		3,695	460,028	107,397	1,973	8,375
Texas						
Jan		121	131,865	81,812	469	2,706
Feb		57	126,365	60,006	*	2,218
Mar		*	136,763	57,263	486	2,378
Apr		*	131,801	41,407	731	2,435
May		88	127,583	35,915	*	2,516
Jun		101	115,273	*	*	1,966
Jul		*	116,080	*	385	2,378
Aug		*	100,042	28,155	*	2,200
Sep		*	82,333	17,801	273	1,994
Oct		*	78,494	19,308	295	2,220
Nov		*	69,907	18,024	207	1,904
Dec		*	80,017	46,892	*	2,273
Total		28,208	1,296,523	472,503	5,010	27,188
Virginia						
Jan		*	54,347	*	*	*
Feb		*	46,002	27,525	30	*
Mar		*	49,928	23,905	*	*
Apr		388	56,592	21,746	22	*
May		281	50,055	18,443	46	*
Jun		*	51,423	*	36	*
Jul		344	53,166	14,634	17	*
Aug		227	55,872	17,096	12	*
Sep		176	55,815	*	*	*
Oct		*	55,392	*	*	*
Nov		230	42,608	*	100	*
Dec		384	53,998	*	21	*
Total		6,230	625,198	274,769	748	73,155

See footnote(s) at end of table.

--continued

**Young Chickens Slaughtered: Number Condemned Post-Mortem by Cause,
by Month and Annual Total, by State and United States, 2003 (continued)**

State and Month	Bruises	Cadaver	Contami- nation	Overscald	Other	Total All Causes
	<i>Number of Head</i>	<i>Number of Head</i>	<i>Number of Head</i>	<i>Number of Head</i>	<i>Number of Head</i>	<i>Number of Head</i>
Tennessee						
Jan	1,297	15,736	4,737	*	9,505	87,201
Feb	922	9,247	4,086	*	*	80,809
Mar	896	7,407	3,700	*	*	89,166
Apr	904	9,166	3,921	368	*	91,560
May	937	8,821	4,066	769	9,603	74,240
Jun	992	9,420	4,752	795	7,665	66,455
Jul	1,014	10,752	4,221	1,034	8,798	68,264
Aug	807	12,420	3,927	*	7,218	65,511
Sep	708	7,977	3,873	1,437	8,708	63,780
Oct	1,056	10,578	4,320	*	13,774	79,003
Nov	739	7,793	3,275	202	5,992	55,840
Dec	951	11,958	3,986	*	13,051	84,857
Total	11,223	121,275	48,864	10,074	133,782	906,686
Texas						
Jan	1,304	9,685	12,722	846	19,030	260,560
Feb	1,051	7,251	8,611	*	17,476	224,401
Mar	1,130	7,334	9,768	*	17,469	233,477
Apr	1,021	8,599	7,398	*	17,260	212,552
May	1,044	9,479	7,928	*	12,353	199,038
Jun	988	9,041	7,900	816	9,284	179,745
Jul	1,148	9,909	7,878	370	9,007	179,429
Aug	1,155	7,662	7,425	811	10,406	158,368
Sep	1,044	*	6,886	*	7,330	126,270
Oct	1,105	*	7,293	466	8,209	127,526
Nov	884	8,814	5,978	*	7,179	140,067
Dec	1,107	7,296	7,776	1,885	11,213	159,604
Total	12,981	102,153	97,563	12,692	146,216	2,201,037
Virginia						
Jan	1,758	12,497	*	4,014	22,639	156,758
Feb	1,404	9,723	*	*	17,207	139,399
Mar	1,392	10,297	*	*	17,012	126,214
Apr	1,479	11,517	*	*	14,800	129,239
May	1,447	8,487	*	*	14,231	116,833
Jun	1,613	9,972	*	*	12,394	118,344
Jul	1,539	13,580	*	*	12,738	120,772
Aug	1,763	14,553	*	*	13,841	125,705
Sep	1,778	11,413	*	*	13,475	118,901
Oct	1,597	13,619	*	3,514	16,955	134,162
Nov	1,400	8,701	*	4,091	12,852	104,535
Dec	1,476	10,928	*	*	16,009	134,955
Total	18,646	135,287	161,132	46,499	184,153	1,525,817

See footnote(s) at end of table.

--continued

**Young Chickens Slaughtered: Number Condemned Post-Mortem by Cause,
by Month and Annual Total, by State and United States, 2003 (continued)**

State and Month	Tuber- culosis	Leukosis	Septicemia	Airsac- culitis	Synovitis	Tumors
	<i>Number of Head</i>	<i>Number of Head</i>	<i>Number of Head</i>	<i>Number of Head</i>	<i>Number of Head</i>	<i>Number of Head</i>
Washington						
Jan		*	*	*	*	*
Feb		*	*	*	*	*
Mar		*	*	*	*	*
Apr		*	*	3,907	*	*
May		*	*	3,703	*	*
Jun		*	*	*	*	*
Jul		78	*	*	*	*
Aug		59	*	*	*	*
Sep		101	*	2,886	*	*
Oct		65	*	*	*	*
Nov		*	*	*	*	*
Dec		32	*	3,868	*	*
Total		742	165,691	36,132	1,419	730
Other States ¹						
Jan		10,879	218,926	127,479	3,884	50,941
Feb		9,460	187,851	119,261	2,455	72,639
Mar		3,158	178,815	108,553	2,341	58,001
Apr		9,840	188,252	71,517	4,520	44,365
May		6,753	191,048	49,034	9,688	42,330
Jun		3,339	87,113	115,094	3,244	43,947
Jul		59,673	175,355	62,130	6,101	39,983
Aug		4,760	176,827	29,172	5,670	38,844
Sep		2,831	180,610	63,799	10,566	25,074
Oct		7,894	176,184	59,207	8,630	48,840
Nov		29,334	88,652	51,917	4,327	21,035
Dec		6,018	111,437	105,201	4,577	26,254
Total ²		59,862	601,127	96,305	9,323	10,052
United States						
Jan		25,623	1,510,737	871,124	11,829	79,450
Feb		23,164	1,295,085	723,544	9,936	91,469
Mar		22,101	1,347,116	699,228	10,466	72,677
Apr		21,451	1,342,537	561,474	11,890	65,610
May		19,605	1,277,208	436,172	12,051	59,816
Jun		18,830	1,206,965	392,440	11,127	56,355
Jul		72,492	1,257,122	349,414	11,827	59,960
Aug		12,273	1,204,372	339,890	10,297	56,131
Sep		8,322	1,182,492	331,394	11,947	55,831
Oct		14,933	1,246,162	384,318	11,279	59,920
Nov		35,023	973,082	341,784	8,249	47,542
Dec		14,385	1,209,215	583,980	11,415	57,141
Total		288,202	15,052,093	6,014,762	132,313	761,902

See footnote(s) at end of table.

--continued

**Young Chickens Slaughtered: Number Condemned Post-Mortem by Cause,
by Month and Annual Total, by State and United States, 2003 (continued)**

State and Month	Bruises	Cadaver	Contamination	Overscald	Other	Total All Causes ³
	<i>Number of Head</i>	<i>Number of Head</i>	<i>Number of Head</i>	<i>Number of Head</i>	<i>Number of Head</i>	<i>Number of Head</i>
Washington						
Jan	*	*	*	*	*	*
Feb	*	*	*	*	*	*
Mar	*	*	*	*	*	*
Apr	*	551	*	102	*	26,388
May	*	*	*	*	*	28,028
Jun	*	671	*	*	*	24,637
Jul	*	947	*	*	*	22,166
Aug	*	860	*	*	6,688	23,352
Sep	*	*	*	*	6,522	*
Oct	*	705	*	52	*	22,171
Nov	*	593	*	*	*	*
Dec	*	*	*	*	*	*
Total	1,576	11,975	4,459	1,473	58,262	282,459
Other States ¹						
Jan	5,489	37,016	81,181	10,025	70,746	173,286
Feb	4,498	22,901	78,397	6,906	92,171	190,322
Mar	5,855	16,810	80,559	14,536	78,273	266,279
Apr	4,729	16,740	76,338	16,099	76,577	269,214
May	3,314	6,457	80,021	26,792	172,378	144,556
Jun	4,424	7,993	71,838	18,064	204,759	148,073
Jul	4,277	8,883	77,112	16,278	100,515	210,137
Aug	6,453	11,443	66,598	23,887	99,351	137,408
Sep	5,003	33,625	70,276	25,114	72,657	155,986
Oct	5,321	27,605	92,423	13,757	93,133	160,281
Nov	5,664	22,044	64,290	8,519	69,164	173,686
Dec	8,332	23,494	67,990	12,883	72,110	255,697
Total ²	18,182	44,950	243,345	11,539	304,799	1,399,484
United States						
Jan	42,695	297,305	259,521	38,993	657,369	3,794,646
Feb	35,207	221,750	214,694	33,825	558,860	3,207,534
Mar	38,061	206,897	226,513	42,906	549,772	3,215,737
Apr	38,846	227,110	223,373	43,290	580,702	3,116,283
May	39,533	233,117	237,087	59,110	547,503	2,921,202
Jun	39,769	236,163	236,950	55,954	540,051	2,794,604
Jul	42,719	255,259	247,953	65,467	503,700	2,865,913
Aug	40,712	237,722	222,147	59,638	487,552	2,670,734
Sep	39,110	236,671	222,373	52,328	448,235	2,588,703
Oct	38,748	248,635	227,816	46,037	502,175	2,780,023
Nov	31,519	190,007	176,011	35,690	438,461	2,277,368
Dec	37,290	248,435	196,470	42,419	594,866	2,995,616
Total	464,209	2,839,071	2,690,908	575,657	6,409,246	35,228,363

* Included in "Other States" to avoid disclosing individual operations.

¹ Sum of confidential figures replaced by an asterisk (*) in the States listed above.

² Totals for States with chicken slaughter not listed above to avoid disclosing individual operations (CO, IL, IA, KS, MN, NE, OK, OR, VT, WV, and WI).

³ The sum of the individual diseases does not add across to "Total All Causes" for Other States.

**Mature Chickens Slaughtered: Number Condemned Post-Mortem by Cause,
by Type, by Month and Annual Total, United States, 2003**

Type and Month	Tuber- culosis	Leukosis	Septicemia	Airsac- culitis	Synovitis	Tumors
	<i>Number of Head</i>	<i>Number of Head</i>	<i>Number of Head</i>	<i>Number of Head</i>	<i>Number of Head</i>	<i>Number of Head</i>
Light						
Jan	4	2,903	250,221	19,052	434	111,414
Feb	1	2,446	185,602	18,134	888	76,703
Mar		2,236	171,466	14,330	194	72,586
Apr		2,577	217,355	19,099	408	96,779
May		2,213	183,747	17,421	253	81,586
Jun		1,701	176,781	12,001	72	93,211
Jul		2,703	168,599	16,268	68	83,928
Aug		2,043	138,337	10,507	37	69,422
Sep		9,823	148,815	14,548	2,665	66,656
Oct		13,618	173,640	14,996	5,298	71,967
Nov		1,648	149,684	12,024	101	68,244
Dec		2,523	206,573	12,828	133	89,079
Total	5	46,434	2,170,820	181,208	10,551	981,575
Heavy						
Jan		1,052	77,008	3,199	399	11,794
Feb	28	1,543	71,420	4,016	429	8,952
Mar		999	72,641	3,516	201	9,533
Apr		727	72,407	4,869	1,100	8,426
May		601	69,514	4,348	130	9,390
Jun		857	72,644	4,866	194	11,110
Jul		1,174	78,333	5,037	397	12,891
Aug	2	1,113	67,122	3,728	415	12,851
Sep		764	72,057	3,759	303	11,360
Oct	1	753	74,904	4,249	286	10,409
Nov		487	56,733	2,690	235	8,666
Dec		699	61,940	4,759	376	10,052
Total	31	10,769	846,723	49,036	4,465	125,434
Total Mature						
Jan	4	3,955	327,229	22,251	833	123,208
Feb	29	3,989	257,022	22,150	1,317	85,655
Mar		3,235	244,107	17,846	395	82,119
Apr		3,304	289,762	23,968	1,508	105,205
May		2,814	253,261	21,769	383	90,976
Jun		2,558	249,425	16,867	266	104,321
Jul		3,877	246,932	21,305	465	96,819
Aug	2	3,156	205,459	14,235	452	82,273
Sep		10,587	220,872	18,307	2,968	78,016
Oct	1	14,371	248,544	19,245	5,584	82,376
Nov		2,135	206,417	14,714	336	76,910
Dec		3,222	268,513	17,587	509	99,131
Total	36	57,203	3,017,543	230,244	15,016	1,107,009

--continued

**Mature Chickens Slaughtered: Number Condemned Post-Mortem by Cause,
by Type, by Month and Annual Total, United States, 2003 (continued)**

Type and Month	Bruises	Cadaver	Contami- nation	Overscald	Other	Total All Causes
	<i>Number of Head</i>	<i>Number of Head</i>	<i>Number of Head</i>	<i>Number of Head</i>	<i>Number of Head</i>	<i>Number of Head</i>
Light						
Jan	15,125	24,860	161,473	1,129	75,739	662,354
Feb	14,098	19,685	154,363	1,787	69,211	542,918
Mar	14,797	26,040	154,823	1,006	127,285	584,763
Apr	22,604	25,311	178,523	2,912	87,814	653,382
May	17,138	20,746	153,879	2,551	67,681	547,215
Jun	13,812	34,775	137,134	1,065	48,791	519,343
Jul	11,539	44,157	134,621	820	48,730	511,433
Aug	13,568	32,708	128,161	236	55,049	450,068
Sep	7,598	18,204	121,312	1,610	39,518	430,749
Oct	9,275	18,595	149,730	1,991	71,104	530,214
Nov	5,606	6,823	121,117	248	68,066	433,561
Dec	6,664	10,205	121,023	1,566	78,424	529,018
Total	151,824	282,109	1,716,159	16,921	837,412	6,395,018
Heavy						
Jan	2,087	26,289	25,427	798	55,045	203,098
Feb	2,011	22,532	22,068	1,974	49,839	184,812
Mar	1,946	14,662	23,131	1,746	66,056	194,431
Apr	1,550	18,322	24,856	1,241	59,012	192,510
May	1,657	17,313	20,025	1,300	59,993	184,271
Jun	1,663	19,479	20,774	2,444	60,934	194,965
Jul	1,903	32,059	22,140	4,051	72,121	230,106
Aug	2,001	24,343	19,521	1,910	61,288	194,294
Sep	2,993	19,969	22,312	2,031	63,775	199,323
Oct	2,004	24,735	27,193	1,580	63,142	209,256
Nov	1,560	9,694	19,030	705	48,571	148,371
Dec	1,749	10,027	21,250	2,527	59,282	172,661
Total	23,124	239,424	267,727	22,307	719,058	2,308,098
Total Mature						
Jan	17,212	51,149	186,900	1,927	130,784	865,452
Feb	16,109	42,217	176,431	3,761	119,050	727,730
Mar	16,743	40,702	177,954	2,752	193,341	779,194
Apr	24,154	43,633	203,379	4,153	146,826	845,892
May	18,795	38,059	173,904	3,851	127,674	731,486
Jun	15,475	54,254	157,908	3,509	109,725	714,308
Jul	13,442	76,216	156,761	4,871	120,851	741,539
Aug	15,569	57,051	147,682	2,146	116,337	644,362
Sep	10,591	38,173	143,624	3,641	103,293	630,072
Oct	11,279	43,330	176,923	3,571	134,246	739,470
Nov	7,166	16,517	140,147	953	116,637	581,932
Dec	8,413	20,232	142,273	4,093	137,706	701,679
Total	174,948	521,533	1,983,886	39,228	1,556,470	8,703,116

**Young Turkeys (Mature) Slaughtered: Number, Live Weight, Average Live Weight,
Pounds Certified and Post-Mortem Condemnations, by Month
and Annual Total, by State, 2003**

State and Month	Number Slaughtered	Live Weight	Average Live Weight	Total Certified ¹	Post-Mortem Condemnations	
					NY Dressed Weight	Percent ²
	<i>1,000 Head</i>	<i>1,000 Pounds</i>	<i>Pounds</i>	<i>1,000 Pounds</i>	<i>1,000 Pounds</i>	<i>Percent</i>
Arkansas						
Jan	2,785	49,313	17.71	41,355	707	1.59
Feb	2,805	49,951	17.81	41,872	743	1.65
Mar	2,701	50,220	18.59	41,877	791	1.75
Apr	3,002	55,846	18.60	46,079	833	1.66
May	3,124	57,286	18.33	47,797	837	1.62
Jun	2,859	51,884	18.15	42,834	797	1.71
Jul	2,965	52,056	17.56	43,355	802	1.71
Aug	2,910	50,747	17.44	42,096	791	1.73
Sep	2,713	47,646	17.56	39,419	754	1.76
Oct	2,800	52,185	18.64	43,455	707	1.51
Nov	2,884	51,313	17.79	41,711	732	1.58
Dec	2,924	52,403	17.92	43,613	751	1.59
Total	34,472	620,850	18.01	515,463	9,245	1.65
California						
Jan	929	23,862	25.69	19,299	453	2.11
Feb	*	*	*	*	*	*
Mar	*	*	*	*	*	*
Apr	*	*	*	*	*	*
May	1,254	32,399	25.83	26,042	568	1.95
Jun	*	*	*	*	*	*
Jul	*	*	*	*	*	*
Aug	*	*	*	*	*	*
Sep	1,604	38,706	24.14	30,822	937	2.69
Oct	2,271	54,910	24.18	44,324	1,070	2.16
Nov	2,369	50,697	21.40	40,099	1,018	2.23
Dec	*	*	*	*	*	*
Total	17,081	412,457	24.15	333,392	8,857	2.39
Iowa						
Jan	1,375	48,927	35.58	37,868	1,395	3.17
Feb	1,317	40,186	30.51	27,889	872	2.41
Mar	1,473	48,593	32.99	38,171	1,193	2.73
Apr	1,510	48,632	32.21	37,764	1,646	3.76
May	1,601	52,123	32.55	40,586	1,207	2.57
Jun	1,574	49,779	31.62	38,761	1,057	2.36
Jul	1,569	49,470	31.53	38,518	1,136	2.55
Aug	1,514	43,750	28.89	34,343	956	2.43
Sep	1,605	48,770	30.39	37,870	1,031	2.35
Oct	1,760	52,576	29.87	41,795	1,123	2.37
Nov	1,422	43,138	30.33	33,327	903	2.32
Dec	1,432	45,140	31.52	33,672	1,052	2.59
Total	18,152	571,084	31.46	440,564	13,571	2.64

See footnote(s) at end of table.

--continued

**Young Turkeys (Mature) Slaughtered: Number, Live Weight, Average Live Weight,
Pounds Certified and Post-Mortem Condemnations, by Month
and Annual Total, by State, 2003 (continued)**

State and Month	Number Slaughtered	Live Weight	Average Live Weight	Total Certified ¹	Post-Mortem Condemnations	
					NY Dressed Weight	Percent ²
	<i>1,000 Head</i>	<i>1,000 Pounds</i>	<i>Pounds</i>	<i>1,000 Pounds</i>	<i>1,000 Pounds</i>	<i>Percent</i>
Minnesota						
Jan	2,984	85,945	28.80	67,139	1,839	2.38
Feb	2,440	67,889	27.82	54,204	1,335	2.18
Mar	2,793	79,542	28.47	60,921	1,583	2.21
Apr	3,031	83,984	27.71	66,209	1,802	2.38
May	3,161	86,584	27.39	67,807	1,685	2.16
Jun	3,200	84,353	26.36	67,095	1,502	1.98
Jul	3,562	89,209	25.04	70,834	1,629	2.03
Aug	3,177	80,025	25.19	62,977	1,476	2.05
Sep	3,003	81,449	27.13	59,367	1,364	1.86
Oct	3,274	86,597	26.45	68,875	1,526	1.96
Nov	3,092	80,483	26.03	64,308	1,368	1.89
Dec	2,700	78,605	29.12	62,375	1,340	1.89
Total	36,417	984,665	27.04	772,111	18,449	2.08
Missouri						
Jan	1,543	48,502	31.43	37,878	1,005	2.30
Feb	1,558	48,547	31.17	37,918	1,092	2.50
Mar	1,658	51,298	30.94	40,025	1,191	2.58
Apr	1,694	54,291	32.05	42,436	1,168	2.39
May	1,623	51,718	31.87	36,167	1,184	2.54
Jun	1,511	48,626	32.18	37,191	1,143	2.61
Jul	1,500	45,830	30.55	35,198	1,054	2.56
Aug	1,488	45,081	30.29	35,168	1,112	2.74
Sep	1,490	44,516	29.88	34,701	1,508	3.76
Oct	1,725	53,604	31.08	42,130	1,128	2.34
Nov	1,430	41,366	28.93	32,330	966	2.60
Dec	1,435	43,051	30.00	33,582	986	2.54
Total	18,655	576,430	30.90	444,724	13,537	2.61
North Carolina						
Jan	3,198	88,953	27.81	70,101	1,324	1.65
Feb	3,222	84,223	26.14	66,760	1,177	1.55
Mar	3,364	84,596	25.15	67,585	1,081	1.42
Apr	3,287	82,955	25.24	65,988	1,016	1.36
May	3,333	86,081	25.83	68,159	1,059	1.37
Jun	*	*	*	*	*	*
Jul	3,532	88,601	25.09	70,396	1,088	1.36
Aug	3,175	81,061	25.53	64,670	1,044	1.43
Sep	*	*	*	*	*	*
Oct	3,763	94,098	25.01	75,199	1,228	1.45
Nov	3,080	80,000	25.97	62,968	993	1.38
Dec	2,867	77,867	27.16	61,485	1,020	1.46
Total	39,474	1,025,467	25.98	814,962	13,266	1.44

See footnote(s) at end of table.

--continued

**Young Turkeys (Mature) Slaughtered: Number, Live Weight, Average Live Weight,
Pounds Certified and Post-Mortem Condemnations, by Month
and Annual Total, by State, 2003 (continued)**

State and Month	Number Slaughtered	Live Weight	Average Live Weight	Total Certified ¹	Post-Mortem Condemnations	
					NY Dressed Weight	Percent ²
	<i>1,000 Head</i>	<i>1,000 Pounds</i>	<i>Pounds</i>	<i>1,000 Pounds</i>	<i>1,000 Pounds</i>	<i>Percent</i>
Pennsylvania						
Jan	*	*	*	*	*	*
Feb	*	*	*	*	*	*
Mar	*	*	*	*	*	*
Apr	*	*	*	*	*	*
May	*	*	*	*	*	*
Jun	*	*	*	*	*	*
Jul	*	*	*	*	*	*
Aug	*	*	*	*	*	*
Sep	*	*	*	*	*	*
Oct	*	*	*	*	*	*
Nov	*	*	*	*	*	*
Dec	*	*	*	*	*	*
Total	10,020	227,803	22.73	181,119	3,236	1.58
Virginia						
Jan	*	*	*	*	*	*
Feb	*	*	*	*	*	*
Mar	*	*	*	*	*	*
Apr	*	*	*	*	*	*
May	*	*	*	*	*	*
Jun	*	*	*	*	*	*
Jul	*	*	*	*	*	*
Aug	*	*	*	*	*	*
Sep	*	*	*	*	*	*
Oct	*	*	*	*	*	*
Nov	*	*	*	*	*	*
Dec	*	*	*	*	*	*
Total	35,248	752,470	21.35	580,310	10,877	1.61
Other States ³						
Jan	8,528	255,000	29.90	199,926	4,148	1.81
Feb	8,682	252,737	29.11	199,065	4,510	1.98
Mar	9,473	274,614	28.99	216,058	5,383	2.18
Apr	9,391	270,238	28.78	212,656	4,640	1.91
May	7,079	204,150	28.84	159,720	3,486	1.90
Jun	12,878	368,724	28.63	291,646	5,513	1.66
Jul	10,169	288,368	28.36	227,368	4,233	1.63
Aug	9,755	269,340	27.61	210,033	4,483	1.85
Sep	11,769	322,701	27.42	251,400	5,493	1.89
Oct	9,529	268,659	28.19	207,012	4,303	1.78
Nov	8,136	223,819	27.51	175,521	3,249	1.61
Dec	9,238	254,730	27.57	201,334	4,040	1.76
Total ⁴	55,234	1,922,205	34.80	1,506,392	32,735	1.89

* Included in "Other States" to avoid disclosing individual operations.

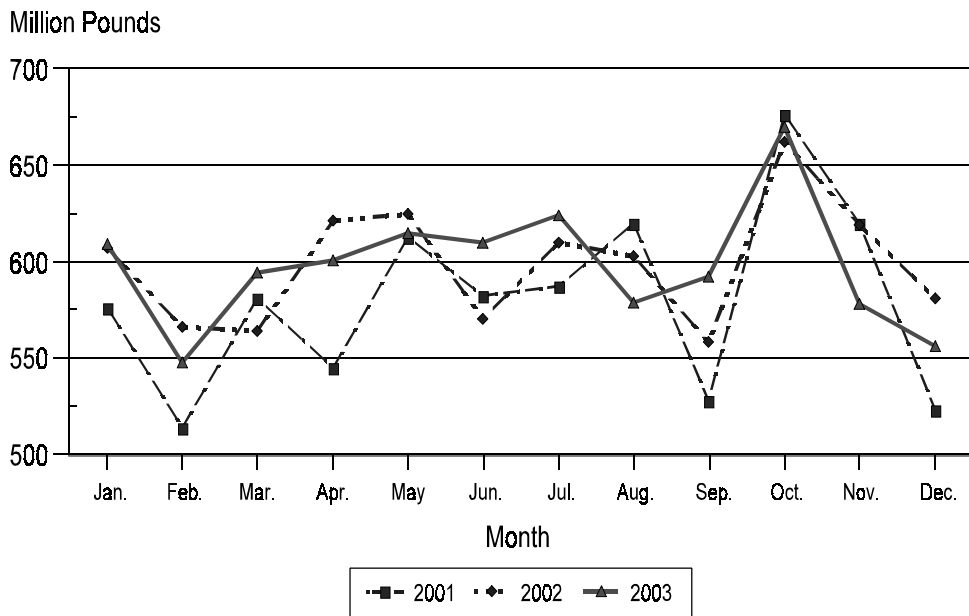
¹ Ready-to-cook weights.

² Pounds condemned as a percent of equivalent N.Y. dressed weight of quantity inspected.

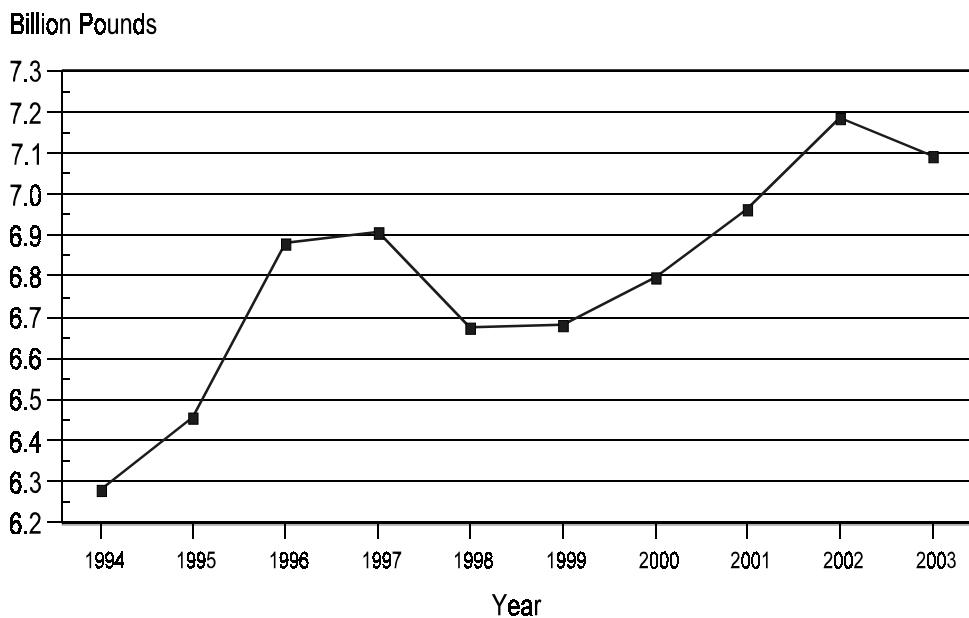
³ Sum of confidential figures replaced by an asterisk (*) in the States listed above.

⁴ Totals for States with turkey slaughter not listed above to avoid disclosing individual operations (CO, IL, IN, MD, MI, NE, NJ, NY, OH, SC, SD, TX, UT, VT, and WI).

Total Live Weight of Young Turkeys Slaughtered Under Federal Inspection, by Month, U.S., 2001-2003



Total Live Weight of Young Turkeys Slaughtered Under Federal Inspection, U.S., 1994-2003



**Young Turkeys (Mature) Slaughtered: Number Condemned Post-Mortem by Cause,
by Month and Annual Total, by State and United States, 2003**

State and Month	Tuberculosis	Leukosis	Septicemia	Airsacculitis	Synovitis	Tumors
	<i>Number of Head</i>	<i>Number of Head</i>	<i>Number of Head</i>	<i>Number of Head</i>	<i>Number of Head</i>	<i>Number of Head</i>
Arkansas						
Jan			6,216	*	*	*
Feb		*	*	*	*	2
Mar			*	*	*	*
Apr			*	*	*	*
May		*	5,461	*	*	*
Jun			5,693	*	*	*
Jul			5,588	*	*	2
Aug		*	5,955	630	*	*
Sep			6,018	*	*	*
Oct			6,181	467	*	*
Nov			7,467	556	*	*
Dec			9,654	1,062	*	4
Total		843	74,990	9,082	328	25
California						
Jan		2	3,204	72	*	*
Feb		*	*	*	*	*
Mar		4	*	*	*	5
Apr		*	*	*	*	*
May		*	3,189	*	*	*
Jun		*	*	*	*	*
Jul		6	4,527	*	*	*
Aug		*	7,392	522	*	5
Sep		*	13,803	668	*	5
Oct		*	13,699	*	*	*
Nov		7	10,529	607	*	*
Dec		*	6,822	275	*	*
Total		296	83,706	4,093	92	155
Iowa						
Jan			7,857	2,113	*	
Feb			6,796	1,433	*	*
Mar		*	6,651	2,245	*	*
Apr		*	7,468	2,108	*	*
May		*	6,542	1,526	*	*
Jun			5,495	1,572	*	3
Jul		*	5,561	1,877	*	*
Aug			4,849	1,751	*	*
Sep			5,972	1,792	*	*
Oct			7,469	1,547	*	
Nov			5,731	1,416	*	*
Dec			7,168	1,859	*	
Total		362	77,559	21,239	23,793	229

See footnote(s) at end of table.

--continued

**Young Turkeys (Mature) Slaughtered: Number Condemned Post-Mortem by Cause,
by Month and Annual Total, by State and United States, 2003 (continued)**

State and Month	Bruises	Cadaver	Contami- nation	Overscald	Other	Total All Causes
	<i>Number of Head</i>	<i>Number of Head</i>	<i>Number of Head</i>	<i>Number of Head</i>	<i>Number of Head</i>	<i>Number of Head</i>
Arkansas						
Jan	*	467	*	*	*	*
Feb	*	550	*	*	*	*
Mar	14	665	*	*	*	*
Apr	*	610	*	*	*	*
May	*	724	*	*	*	*
Jun	*	770	*	*	*	*
Jul	*	763	*	*	*	*
Aug	*	*	*	*	*	*
Sep	*	2,259	*	*	*	13,254
Oct	12	903	*	*	*	10,205
Nov	28	*	*	*	1,610	13,126
Dec	*	1,087	*	*	*	14,692
Total	298	10,373	18,682	6,737	14,377	135,735
California						
Jan	16	*	*	*	*	4,578
Feb	*	*	*	6	*	*
Mar	*	*	*	*	*	*
Apr	*	*	90	*	*	*
May	*	*	*	*	*	*
Jun	*	*	70	*	*	*
Jul	*	*	*	*	*	6,269
Aug	9	*	*	*	*	9,609
Sep	*	359	*	*	681	17,472
Oct	43	*	611	*	1,288	18,275
Nov	*	524	349	*	1,438	13,945
Dec	*	290	275	*	982	9,122
Total	469	4,429	2,966	2,840	11,972	111,018
Iowa						
Jan	142	426	628	*	705	15,770
Feb	98	421	583	75	305	11,414
Mar	*	577	541	88	680	12,955
Apr	*	*	479	*	*	14,971
May	124	410	431	*	*	12,995
Jun	102	*	396	*	*	11,720
Jul	106	476	393	*	*	11,748
Aug	100	313	442	*	*	10,375
Sep	107	*	426	*	*	11,532
Oct	103	353	465	*	*	12,685
Nov	72	365	434	*	*	10,404
Dec	103	365	900	*	634	12,745
Total	1,390	4,975	6,118	968	12,681	149,314

See footnote(s) at end of table.

--continued

**Young Turkeys (Mature) Slaughtered: Number Condemned Post-Mortem by Cause,
by Month and Annual Total, by State and United States, 2003 (continued)**

State and Month	Tuber- culosis	Leukosis	Septicemia	Airsac- culitis	Synovitis	Tumors
	<i>Number of Head</i>	<i>Number of Head</i>	<i>Number of Head</i>	<i>Number of Head</i>	<i>Number of Head</i>	<i>Number of Head</i>
Minnesota						
Jan		19	21,452	4,208	*	29
Feb		*	*	2,434	*	*
Mar		*	16,667	3,103	*	26
Apr		*	18,219	2,370	*	12
May		*	18,346	2,101	*	23
Jun		*	16,378	*	*	27
Jul		*	18,684	*	*	27
Aug		*	17,177	*	*	*
Sep		*	16,323	*	*	*
Oct		*	19,158	*	*	*
Nov		*	*	*	683	15
Dec		*	16,378	*	*	*
Total		579	212,363	26,995	11,538	342
Missouri						
Jan			13,883	*	*	
Feb			17,211	*		
Mar			17,658	*	*	*
Apr		*	14,196	*	*	
May		*	13,524	*		*
Jun			13,552	*		*
Jul			10,469	*		*
Aug			15,553	*		
Sep			14,885	*	*	
Oct			12,761	*		*
Nov			9,097	*		
Dec			13,104	*		
Total		59	165,893	13,599	18	6
North Carolina						
Jan		2	*	*	10	2
Feb		*	*	*	7	*
Mar		*	*	*		*
Apr		4	*	*	*	4
May			*	*	*	*
Jun			*	*		2
Jul			*	*		*
Aug		*	3,218	*	2	*
Sep		*	3,937	*		*
Oct		*	*	*	*	*
Nov		*	3,634	*		*
Dec		*	3,434	*	*	*
Total		405	50,140	8,598	36	55

See footnote(s) at end of table.

--continued

**Young Turkeys (Mature) Slaughtered: Number Condemned Post-Mortem by Cause,
by Month and Annual Total, by State and United States, 2003 (continued)**

State and Month	Bruises	Cadaver	Contami- nation	Overscald	Other	Total All Causes
	<i>Number of Head</i>	<i>Number of Head</i>	<i>Number of Head</i>	<i>Number of Head</i>	<i>Number of Head</i>	<i>Number of Head</i>
Minnesota						
Jan	151	565	916	*	1,849	30,723
Feb	65	581	476	531	1,285	22,357
Mar	*	645	659	*	1,465	24,254
Apr	128	607	869	*	1,987	25,594
May	109	846	849	*	2,489	26,265
Jun	118	628	504	*	2,513	23,312
Jul	102	764	679	219	2,869	26,525
Aug	*	654	1,185	*	3,025	25,417
Sep	129	558	647	169	2,718	23,259
Oct	122	707	672	*	3,240	26,460
Nov	*	712	814	*	2,180	24,150
Dec	*	444	567	*	1,670	21,544
Total	1,346	7,711	8,837	2,859	27,290	299,860
Missouri						
Jan	*	*	235	*	*	17,150
Feb	38	*	345	*	*	19,932
Mar	*	*	407	7	*	21,370
Apr	51	*	*	*	*	18,547
May	*	318	*	*	*	17,344
Jun	*	255	*	*	*	16,001
Jul	*	434	368	*	*	15,502
Aug	*	*	251	*	*	19,350
Sep	*	*	*	*	*	19,229
Oct	*	*	331	*	*	16,249
Nov	*	*	233	5	*	14,305
Dec	28	500	230	*	1,041	15,700
Total	463	4,764	3,558	441	21,878	210,679
North Carolina						
Jan	239	1,718	*	233	1,828	12,544
Feb	235	1,219	*	*	2,130	11,691
Mar	197	*	*	59	1,285	9,864
Apr	*	1,049	484	*	630	*
May	62	1,019	*	*	*	6,077
Jun	48	*	323	*	596	6,324
Jul	57	1,251	*	*	835	7,308
Aug	*	1,169	356	*	608	6,885
Sep	60	949	390	*	*	7,671
Oct	*	*	431	*	609	8,687
Nov	*	*	342	*	725	*
Dec	33	694	385	*	1,241	6,423
Total	1,208	13,283	8,383	2,684	11,777	96,569

See footnote(s) at end of table.

--continued

**Young Turkeys (Mature) Slaughtered: Number Condemned Post-Mortem by Cause,
by Month and Annual Total, by State and United States, 2003 (continued)**

State and Month	Tuberculosis	Leukosis	Septicemia	Airsacculitis	Synovitis	Tumors
	<i>Number of Head</i>	<i>Number of Head</i>	<i>Number of Head</i>	<i>Number of Head</i>	<i>Number of Head</i>	<i>Number of Head</i>
Ohio						
Jan		*	*	*	*	*
Feb			*	*	*	
Mar		*	*	*	*	*
Apr		*	*	*	*	*
May			*	*	*	*
Jun			*	*	*	*
Jul		*	*	*	*	*
Aug			*	*	*	
Sep		*	*	*	*	*
Oct		*	*	112	*	14
Nov		*	*	49	*	*
Dec		*	*	*	*	*
Total		31	23,197	2,333	1,140	83
Pennsylvania						
Jan		20	*	709	*	4
Feb		*	*	530	*	*
Mar			*	490	11	*
Apr		*	*	492	*	*
May		*	*	*	*	*
Jun		*	*	*	*	*
Jul		*	*	*	*	*
Aug		*	*	458	*	
Sep		*	*	*	*	
Oct		*	*	333	*	*
Nov		*	*	270	*	*
Dec		*	*	607	*	2
Total		984	48,595	6,062	102	22
Virginia						
Jan		*	*	*	*	*
Feb		*	*	*	*	*
Mar		*	*	*	*	*
Apr		*	*	*	*	*
May		*	*	*	*	*
Jun		*	*	*	*	*
Jul		*	*	*	*	*
Aug		*	*	*	*	*
Sep		*	*	*	*	*
Oct		*	*	*	*	*
Nov		*	*	*	*	*
Dec		*	*	*	*	*
Total		98	45,742	2,490	80	170

See footnote(s) at end of table.

--continued

**Young Turkeys (Mature) Slaughtered: Number Condemned Post-Mortem by Cause,
by Month and Annual Total, by State and United States, 2003 (continued)**

State and Month	Bruises	Cadaver	Contami- nation	Overscald	Other	Total All Causes
	<i>Number of Head</i>	<i>Number of Head</i>	<i>Number of Head</i>	<i>Number of Head</i>	<i>Number of Head</i>	<i>Number of Head</i>
Ohio						
Jan	*	*	*	*	*	*
Feb	*	*	*	*	*	*
Mar	*	*	*	*	*	*
Apr	*	*	*	*	*	*
May	*	*	*	*	*	*
Jun	*	*	*	*	*	*
Jul	*	*	*	*	*	*
Aug	*	*	*	*	*	*
Sep	*	*	*	*	*	*
Oct	*	*	*	*	*	*
Nov	15	89	47	*	*	*
Dec	*	*	*	*	*	*
Total	197	1,374	523	3,745	4,475	37,098
Pennsylvania						
Jan	*	*	251	*	*	*
Feb	*	*	*	*	855	*
Mar	*	*	*	*	*	*
Apr	*	*	*	*	*	*
May	*	*	*	*	629	*
Jun	90	*	*	*	718	*
Jul	37	*	*	*	*	*
Aug	*	*	*	*	*	*
Sep	31	*	130	*	*	*
Oct	64	*	113	*	757	*
Nov	114	*	*	26	*	*
Dec	*	*	201	18	947	*
Total	974	4,851	2,176	927	10,380	75,073
Virginia						
Jan	*	*	*	*	*	*
Feb	*	*	*	*	*	*
Mar	*	*	*	*	*	*
Apr	*	*	*	*	*	*
May	*	*	*	*	*	*
Jun	*	*	*	*	*	*
Jul	*	*	*	*	*	*
Aug	*	*	*	*	*	*
Sep	*	*	*	*	*	*
Oct	*	*	*	*	*	*
Nov	*	*	*	*	*	*
Dec	*	*	*	*	*	*
Total	415	18,149	3,328	3,238	23,635	97,345

See footnote(s) at end of table.

--continued

**Young Turkeys (Mature) Slaughtered: Number Condemned Post-Mortem by Cause,
by Month and Annual Total, by State and United States, 2003 (continued)**

State and Month	Tuberculosis	Leukosis	Septicemia	Airsacculitis	Synovitis	Tumors
	<i>Number of Head</i>	<i>Number of Head</i>	<i>Number of Head</i>	<i>Number of Head</i>	<i>Number of Head</i>	<i>Number of Head</i>
Other States ¹						
Jan		7	43,226	7,800	6,704	78
Feb		774	67,169	8,850	4,461	133
Mar	1	349	53,520	9,676	4,667	34
Apr		194	46,748	6,900	5,480	39
May		141	34,900	5,845	5,326	35
Jun		33	36,058	6,268	4,517	136
Jul		188	33,961	7,993	4,191	28
Aug		933	31,950	7,771	5,073	109
Sep		61	35,201	12,083	5,022	58
Oct		767	43,068	8,045	5,062	65
Nov		250	47,112	7,023	2,795	167
Dec		432	32,248	5,664	4,282	49
Total ²	1	536	280,831	43,791	21,166	57
United States						
Jan		50	95,838	14,902	6,714	113
Feb		774	91,176	13,247	4,468	135
Mar	1	353	94,496	15,514	4,678	65
Apr		198	86,631	11,870	5,480	55
May		141	81,962	9,472	5,326	58
Jun		33	77,176	7,840	4,517	168
Jul		194	78,790	9,870	4,191	57
Aug		933	86,094	11,132	5,075	114
Sep		61	96,139	14,543	5,022	63
Oct		767	102,336	10,504	5,062	79
Nov		257	83,570	9,921	3,478	182
Dec		432	88,808	9,467	4,282	55
Total	1	4,193	1,063,016	138,282	58,293	1,144

See footnote(s) at end of table.

--continued

**Young Turkeys (Mature) Slaughtered: Number Condemned Post-Mortem by Cause,
by Month and Annual Total, by State and United States, 2003 (continued)**

State and Month	Bruises	Cadaver	Contami- nation	Overscald	Other	Total All Causes ³
	<i>Number of Head</i>	<i>Number of Head</i>	<i>Number of Head</i>	<i>Number of Head</i>	<i>Number of Head</i>	<i>Number of Head</i>
Other States ¹						
Jan	385	4,978	4,987	2,465	12,617	72,653
Feb	373	4,034	5,030	1,072	9,770	74,483
Mar	735	5,534	3,791	1,837	10,976	76,826
Apr	598	4,227	3,208	2,838	12,444	75,421
May	384	3,140	3,525	2,744	11,517	63,598
Jun	248	4,392	2,777	3,127	12,242	62,294
Jul	250	2,801	3,118	2,573	13,724	57,569
Aug	453	3,760	2,666	1,736	12,255	60,694
Sep	255	3,257	3,722	2,310	12,417	54,985
Oct	375	5,155	2,566	2,651	9,973	57,731
Nov	523	4,610	3,547	1,250	8,699	50,229
Dec	545	2,985	2,783	1,576	5,923	49,265
Total ²	1,166	11,016	9,352	3,176	45,139	416,931
United States						
Jan	933	8,154	7,017	2,698	16,999	153,418
Feb	809	6,805	6,434	1,684	14,345	139,877
Mar	946	7,421	5,398	1,991	14,406	145,269
Apr	777	6,493	5,130	2,838	15,061	134,533
May	679	6,457	4,805	2,744	14,635	126,279
Jun	606	6,045	4,070	3,127	16,069	119,651
Jul	552	6,489	4,558	2,792	17,428	124,921
Aug	562	5,896	4,900	1,736	15,888	132,330
Sep	582	7,382	5,315	2,479	15,816	147,402
Oct	719	7,118	5,189	2,651	15,867	150,292
Nov	752	6,300	5,766	1,281	14,652	126,159
Dec	709	6,365	5,341	1,594	12,438	129,491
Total	8,626	80,925	63,923	27,615	183,604	1,629,622

* Included in "Other States" to avoid disclosing individual operations.

¹ Sum of confidential figures replaced by an asterisk (*) in the States listed above.

² Totals for States with turkey slaughter not listed above to avoid disclosing individual operations (CO, IL, IN, MD, MI, NE, NJ, NY, SC, SD, TX, UT, VT, and WI).

³ The sum of the individual diseases does not add across to "Total All Causes" for Other States.

**Old Turkeys (Breeders) Slaughtered: Number Condemned Post-Mortem
by Cause, by Month and Annual Total, United States, 2003**

Month	Tuber- culosis	Leukosis	Septicemia	Airsac- culitis	Synovitis	Tumors
	<i>Number of Head</i>	<i>Number of Head</i>	<i>Number of Head</i>	<i>Number of Head</i>	<i>Number of Head</i>	<i>Number of Head</i>
Jan		64	9,265	2,086	62	550
Feb		46	7,377	891	21	74
Mar		9	3,869	1,174	105	98
Apr			5,682	1,251	96	250
May			5,974	1,090	56	124
Jun		14	6,368	1,630	18	153
Jul		1	8,848	891	113	246
Aug		25	4,981	1,562	17	263
Sep		545	4,592	1,126	46	83
Oct		2	4,476	936	7	90
Nov		1	3,241	607	255	101
Dec		2	2,425	590	12	82
Total		709	67,098	13,834	808	2,114

--continued

**Old Turkeys (Breeders) Slaughtered: Number Condemned Post-Mortem
by Cause, by Month and Annual Total, United States, 2003 (continued)**

Month	Bruises	Cadaver	Contami- nation	Overscald	Other	Total All Causes
	<i>Number of Head</i>	<i>Number of Head</i>	<i>Number of Head</i>	<i>Number of Head</i>	<i>Number of Head</i>	<i>Number of Head</i>
Jan	26	187	276	29	1,671	14,216
Feb	11	218	195	7	1,255	10,095
Mar	39	310	396	18	1,712	7,730
Apr	26	217	321	79	1,616	9,538
May	24	261	274	21	736	8,560
Jun	26	222	267	83	2,496	11,277
Jul	30	193	172	29	993	11,516
Aug	46	223	185	12	1,408	8,722
Sep	13	143	122	22	1,268	7,960
Oct	23	119	154	7	1,126	6,940
Nov	21	147	90	13	498	4,974
Dec	39	100	90	15	593	3,948
Total	324	2,340	2,542	335	15,372	105,476

Poultry Slaughter Estimates

Data Sources: Data for poultry slaughter estimates are obtained from the Poultry Inspection Forms (FSIS 6000-21) which are completed by inspectors of the Food Safety and Inspection Service (FSIS), USDA, for all Federally Inspected (FI) plants. Over 99 percent of the total U.S. slaughter for any species is under FI. The number of head slaughtered daily, by species and class, as well as condemnations and total live and dressed weights are listed on the form. Approximately 350 plants in the U.S. are operated under Federal Inspection.

Revision Policy: The data in this report reflect any late reports received by FSIS or corrections which occurred after the monthly revisions were published. They are considered to be final and are not open to revision in the future.

Procedures and Reliability: Plant inspectors submit inspection forms (FSIS 6000-21) weekly. The reports cover weekly activities through Saturday night.

An edit provides checks for the detection of errors such as invalid plant information, duplication, and erroneous data. In addition, data are compared with historical data levels and averages for each plant.

Data for major slaughter plants with missing reports are adjusted to assure that all plants slaughtering a significant portion of a specific class are accounted for each week. Estimates for missing weeks are made only after verifying that the plant was in operation. Adjustments are based on either the previous week's information or a week determined to be similar to the one missing. Late reports replace imputed data as they become available. While there is a varying degree of incompleteness from month to month, it has only a minimal impact on the published totals.

Data are summarized weekly and accumulated to monthly totals. When a week extends into the following month, the reported data are allocated to the appropriate month.

Poultry slaughter estimates are based on a census of operating plants and, therefore, have no sampling error. However, they may be subject to errors such as omissions, duplications, and mistakes in reporting, recording, and processing the data. These errors are minimized through strict quality controls in the edit and summarization process, and a careful review of all reported data for consistency and reasonableness.

State data are published for selected states for young chicken and young turkeys. State data are not published if less than three plants operate for a species in a State, or if one plant has 60 percent or more of the total live weight for that species. Data for states not published are included in the "Other States" category. Also included in this category are data for published states that are confidential (denoted by an *). Data for all states are included in the U.S. totals. For 2003, young chickens were killed in 34 states, young turkeys in 23 states.

Definitions

Ante-Mortem Condemnations - Birds condemned prior to their entry into the slaughter plant.

Certified Ready-to-Cook - The weight of poultry certified wholesome by inspection after post-mortem condemnation pounds are removed. Ready-to-cook represents poultry meat ready for the marketing channel.

Ducks - Includes all ducks regardless of age and weight.

Fryer-Roaster Turkeys - Young immature birds, usually under 16 weeks of age. These are included with young turkeys as their numbers are too low to publish separately.

Mature Chickens - Fowl from breeder and market egg flocks and stags and cocks.

New York Dressed Weight - Carcass weight after only feathers and blood are removed. This weight is approximately 90% of live weight.

Old Turkeys (Breeders) - Fully matured birds held for egg production, usually over 15 months of age.

Other Poultry - Includes all other ready-to-cook products which bear the USDA Inspected for Wholesomeness legend.

Post-Mortem Condemnations - Carcasses or parts condemned by the inspector because of disease or mishandling and removed from the slaughter line and destroyed.

Young Chickens - Commercially grown broilers-fryers and other young immature birds such as roasters and capons.

Young Turkeys (Mature) - Young birds grown to a matured market age, about 5 months. Includes fryer roasters.

Released March 8, 2004, by the National Agricultural Statistics Service (NASS), Agricultural Statistics Board, U.S. Department of Agriculture. For information on "*Poultry Slaughter 2003 Annual Summary*" call John Lange at (202) 720-0585, office hours 7:00 a.m. to 4:30 p.m. ET.

The next "*Poultry Slaughter 2003 Annual Summary*" report will be released in March 2005.

The United States Department of Agriculture (USDA) prohibits discrimination in all its programs on the basis of race, color, national origin, gender, religion, age, disability, political beliefs, sexual orientation, and marital or family status. (Not all prohibited bases apply to all programs.) Persons with disabilities who require alternative means for communication of program information (braille, large print, audiotape, etc.) should contact the USDA's TARGET Center at 202-720-2600 (voice and TDD).

To file a complaint of discrimination, write USDA, Director, Office of Civil Rights, Room 326-W, Whitten Building, 1400 Independence Avenue, SW, Washington, D.C., 20250-9410, or call 202-720-5964 (voice or TDD). USDA is an equal opportunity provider and employer.

ACCESS TO REPORTS!!

For your convenience, there are several ways to obtain NASS reports, data products, and services:

INTERNET ACCESS

All NASS reports are available free of charge on the worldwide Internet. For access, connect to the Internet and go to the NASS Home Page at www.usda.gov/nass/. Select "Today's Reports" or Publications and then Reports Calendar or Publications and then Search, by Title or Subject.

E-MAIL SUBSCRIPTION

All NASS reports are available by subscription free of charge direct to your e-mail address. Starting with the NASS Home Page at www.usda.gov/nass/, click on **Publications**, then click on the **Subscribe by E-mail** button which takes you to the page describing e-mail delivery of reports. Finally, click on **Go to the Subscription Page** and follow the instructions.

PRINTED REPORTS OR DATA PRODUCTS

CALL OUR TOLL-FREE ORDER DESK: 800-999-6779 (U.S. and Canada)
Other areas, please call 703-605-6220 FAX: 703-605-6900
(Visa, MasterCard, check, or money order acceptable for payment.)

ASSISTANCE

For **assistance** with general agricultural statistics or further information about NASS or its products or services, contact the **Agricultural Statistics Hotline** at **800-727-9540**, 7:30 a.m. to 4:00 p.m. ET, or e-mail: nass@nass.usda.gov.
