



United States
Department of
Agriculture

National
Agricultural
Statistics
Service



Poultry Slaughter 2004 Annual Summary

February 2005

Pou 2-1 (05)

USDA



Table of Contents

	Page
Poultry Slaughter: Number, Live Weight, and Average Live Weight by Type, by Month and Annual Total, United States, 2004	2
Poultry Slaughter: Chilled and Frozen, Pounds Certified by Type, by Month and Annual Total, United States, 2004	4
Poultry Slaughter: Ante-Mortem Condemnations by Type, by Month and Annual Total, United States, 2004	6
Poultry Slaughter: Post-Mortem Condemnations by Type, by Month and Annual Total, United States, 2004	8
Young Chickens Slaughtered: Number, Live Weight, Average Live Weight, Pounds Certified, and Post-Mortem Condemnations, by Month and Annual Total, by State, 2004	10
Young Chickens Slaughtered: Number Condemned Post-Mortem by Cause, by Month and Annual Total, by State and United States, 2004	18
Mature Chickens Slaughtered: Number Condemned Post-Mortem by Cause, by Type, by Month and Annual Total, United States, 2004	34
Young Turkeys (Mature) Slaughtered: Number, Live Weight, Average Live Weight, Pounds Certified, and Post-Mortem Condemnations, by Month and Annual Total, by State, 2004	36
Young Turkeys (Mature) Slaughtered: Number Condemned Post-Mortem by Cause, by Month and Annual Total, by State and United States, 2004	40
Old Turkeys (Breeders) Slaughtered: Number Condemned Post-Mortem by Cause, by Month and Annual Total, United States, 2004	48
Reliability Statement	49
Definitions	50

**Poultry Slaughter: Number, Live Weight, and Average Live Weight
by Type, by Month and Annual Total, United States, 2004**

Month	Chickens				Total	Ducks
	Young	Mature		Total		
		Light	Heavy			
	<i>1,000 Head</i>	<i>1,000 Head</i>	<i>1,000 Head</i>	<i>1,000 Head</i>	<i>1,000 Head</i>	<i>1,000 Head</i>
Number						
Jan	720,976	5,838	5,487	11,325	732,301	2,153
Feb	646,358	5,249	4,506	9,755	656,113	1,940
Mar	765,029	6,148	6,039	12,187	777,216	2,237
Apr	727,563	6,131	5,945	12,076	739,639	2,169
May	714,721	6,112	5,479	11,591	726,312	2,046
Jun	748,857	6,304	6,099	12,403	761,260	2,217
Jul	741,776	6,346	6,178	12,524	754,300	2,149
Aug	770,730	6,388	6,506	12,894	783,624	2,190
Sep	754,743	6,155	6,565	12,720	767,463	2,210
Oct	730,516	5,922	6,213	12,135	742,651	2,086
Nov	708,356	5,705	5,738	11,443	719,799	2,185
Dec	722,811	6,140	6,119	12,259	735,070	2,385
Total	8,752,436	72,438	70,874	143,312	8,895,748	25,967
Live Weight						
	<i>1,000 pounds</i>	<i>1,000 pounds</i>	<i>1,000 pounds</i>	<i>1,000 pounds</i>	<i>1,000 pounds</i>	<i>1,000 pounds</i>
Jan	3,823,817	20,188	43,922	64,110	3,887,927	14,608
Feb	3,347,079	17,133	35,982	53,115	3,400,194	13,050
Mar	3,956,059	20,621	47,531	68,152	4,024,211	14,912
Apr	3,805,481	20,566	47,701	68,267	3,873,748	14,393
May	3,743,796	20,441	43,859	64,300	3,808,096	13,766
Jun	3,936,716	21,037	49,079	70,116	4,006,832	14,773
Jul	3,880,719	20,973	49,909	70,882	3,951,601	14,258
Aug	4,050,465	21,280	52,538	73,818	4,124,283	14,505
Sep	4,030,451	20,814	53,363	74,177	4,104,628	14,852
Oct	3,934,785	19,656	50,568	70,224	4,005,009	14,122
Nov	3,765,566	19,387	46,192	65,579	3,831,145	14,817
Dec	3,834,267	20,619	48,315	68,934	3,903,201	16,175
Total	46,109,201	242,715	568,959	811,674	46,920,875	174,231
Average Live Weight						
	<i>Pounds</i>	<i>Pounds</i>	<i>Pounds</i>	<i>Pounds</i>	<i>Pounds</i>	<i>Pounds</i>
Jan	5.30	3.46	8.00	5.66	5.31	6.79
Feb	5.18	3.26	7.99	5.44	5.18	6.73
Mar	5.17	3.35	7.87	5.59	5.18	6.67
Apr	5.23	3.35	8.02	5.65	5.24	6.64
May	5.24	3.34	8.01	5.55	5.24	6.73
Jun	5.26	3.34	8.05	5.65	5.26	6.66
Jul	5.23	3.31	8.08	5.66	5.24	6.63
Aug	5.26	3.33	8.08	5.73	5.26	6.62
Sep	5.34	3.38	8.13	5.83	5.35	6.72
Oct	5.39	3.32	8.14	5.79	5.39	6.77
Nov	5.32	3.40	8.05	5.73	5.32	6.78
Dec	5.30	3.36	7.90	5.62	5.31	6.78
Total	5.27	3.35	8.03	5.66	5.27	6.71

--continued

**Poultry Slaughter: Number, Live Weight, and Average Live Weight
by Type, by Month and Annual Total, United States, 2004 (continued)**

Month	Turkeys			Other Poultry	Total Poultry
	Young	Old	Total		
	<i>1,000 Head</i>	<i>1,000 Head</i>	<i>1,000 Head</i>	<i>1,000 Head</i>	<i>1,000 Head</i>
Number					
Jan	19,946	207	20,153		
Feb	18,335	107	18,442		
Mar	21,779	229	22,008		
Apr	20,465	208	20,673		
May	20,234	196	20,430		
Jun	21,284	218	21,502		
Jul	21,749	284	22,033		
Aug	22,336	292	22,628		
Sep	21,318	346	21,664		
Oct	21,525	215	21,740		
Nov	22,951	174	23,125		
Dec	19,641	269	19,910		
Total	251,563	2,745	254,308		
	<i>1,000 pounds</i>	<i>1,000 pounds</i>	<i>1,000 pounds</i>	<i>1,000 pounds</i>	<i>1,000 pounds</i>
Live Weight					
Jan	549,136	5,995	555,131	222	4,457,888
Feb	511,819	2,830	514,649	242	3,928,135
Mar	590,951	6,103	597,054	369	4,636,546
Apr	561,849	5,454	567,303	347	4,455,791
May	558,677	5,304	563,981	379	4,386,222
Jun	585,373	5,842	591,215	422	4,613,242
Jul	579,512	7,330	586,842	508	4,553,209
Aug	587,415	7,702	595,117	995	4,734,900
Sep	567,179	9,014	576,193	1,762	4,697,435
Oct	581,292	6,010	587,302	1,770	4,608,203
Nov	604,605	4,823	609,428	860	4,456,250
Dec	544,364	7,290	551,654	528	4,471,558
Total	6,822,172	73,697	6,895,869	8,404	53,999,379
	<i>Pounds</i>	<i>Pounds</i>	<i>Pounds</i>	<i>Pounds</i>	<i>Pounds</i>
Average Live Weight					
Jan	27.53	28.92	27.55		
Feb	27.91	26.37	27.90		
Mar	27.14	26.71	27.13		
Apr	27.45	26.21	27.44		
May	27.61	27.07	27.61		
Jun	27.50	26.80	27.50		
Jul	26.65	25.81	26.63		
Aug	26.30	26.40	26.30		
Sep	26.60	26.02	26.59		
Oct	27.00	27.91	27.01		
Nov	26.34	27.80	26.35		
Dec	27.72	27.08	27.71		
Total	27.12	26.84	27.12		

**Poultry Slaughter: Chilled and Frozen, Pounds Certified by Type,
by Month and Annual Total, United States, 2004¹**

Month	Chickens					Ducks
	Young	Mature			Total	
		Light	Heavy	Total		
	<i>1,000 Pounds</i>	<i>1,000 Pounds</i>	<i>1,000 Pounds</i>	<i>1,000 Pounds</i>	<i>1,000 Pounds</i>	<i>1,000 Pounds</i>
Chilled						
Jan	2,553,222	10,384	28,655	39,039	2,592,261	7,132
Feb	2,259,042	8,794	23,163	31,957	2,290,999	6,240
Mar	2,672,684	10,455	34,085	44,540	2,717,224	7,111
Apr	2,575,296	10,072	31,840	41,912	2,617,208	6,626
May	2,523,551	9,966	28,889	38,855	2,562,406	5,924
Jun	2,643,648	10,734	32,464	43,198	2,686,846	6,140
Jul	2,623,233	10,579	32,773	43,352	2,666,585	5,608
Aug	2,710,737	10,710	34,523	45,233	2,755,970	5,843
Sep	2,704,708	10,625	35,493	46,118	2,750,826	5,928
Oct	2,629,461	9,849	33,360	43,209	2,672,670	5,540
Nov	2,537,646	9,793	30,542	40,335	2,577,981	5,700
Dec	2,582,848	10,653	31,525	42,178	2,625,026	6,104
Total	31,016,076	122,614	377,312	499,926	31,516,002	73,896
Frozen						
Jan	270,377		170	170	270,547	4,282
Feb	208,709		387	387	209,096	3,942
Mar	230,492	64	487	551	231,043	4,502
Apr	238,947	43	200	243	239,190	4,437
May	247,884	167	202	369	248,253	4,122
Jun	262,714	56	491	547	263,261	4,560
Jul	252,607	23	153	176	252,783	4,620
Aug	278,721	219	291	510	279,231	4,547
Sep	269,369	103	275	378	269,747	4,635
Oct	274,153	183	303	486	274,639	4,497
Nov	259,215	121	133	254	259,469	4,668
Dec	254,075		302	302	254,377	5,322
Total	3,047,263	979	3,394	4,373	3,051,636	54,134
Total Certified						
Jan	2,823,599	10,384	28,825	39,209	2,862,808	11,414
Feb	2,467,751	8,794	23,550	32,344	2,500,095	10,182
Mar	2,903,176	10,519	34,572	45,091	2,948,267	11,613
Apr	2,814,243	10,115	32,040	42,155	2,856,398	11,063
May	2,771,435	10,133	29,091	39,224	2,810,659	10,046
Jun	2,906,362	10,790	32,955	43,745	2,950,107	10,700
Jul	2,875,840	10,602	32,926	43,528	2,919,368	10,228
Aug	2,989,458	10,929	34,814	45,743	3,035,201	10,390
Sep	2,974,077	10,728	35,768	46,496	3,020,573	10,563
Oct	2,903,614	10,032	33,663	43,695	2,947,309	10,037
Nov	2,796,861	9,914	30,675	40,589	2,837,450	10,368
Dec	2,836,923	10,653	31,827	42,480	2,879,403	11,426
Total	34,063,339	123,593	380,706	504,299	34,567,638	128,030

See footnote(s) at end of table.

--continued

**Poultry Slaughter: Chilled and Frozen, Pounds Certified by Type,
by Month and Annual Total, United States, 2004 ¹ (continued)**

Month	Turkeys			Other Poultry	Total Poultry
	Young	Old	Total		
	<i>1,000 Pounds</i>	<i>1,000 Pounds</i>	<i>1,000 Pounds</i>	<i>1,000 Pounds</i>	<i>1,000 Pounds</i>
Chilled					
Jan	239,252	3,823	243,075	129	2,842,597
Feb	213,428	2,033	215,461	122	2,512,822
Mar	260,567	3,616	264,183	210	2,988,728
Apr	236,450	3,526	239,976	197	2,864,007
May	228,623	3,120	231,743	198	2,800,271
Jun	244,720	3,471	248,191	224	2,941,401
Jul	239,549	4,700	244,249	278	2,916,720
Aug	244,887	5,189	250,076	261	3,012,150
Sep	237,150	4,995	242,145	249	2,999,148
Oct	260,658	3,276	263,934	222	2,942,366
Nov	289,551	2,728	292,279	247	2,876,207
Dec	258,020	4,382	262,402	287	2,893,819
Total	2,952,855	44,859	2,997,714	2,624	34,590,236
Frozen					
Jan	196,235	721	196,956	39	471,824
Feb	182,348	154	182,502	34	395,574
Mar	205,983	688	206,671	25	442,241
Apr	208,702	518	209,220	30	452,877
May	216,696	697	217,393	49	469,817
Jun	218,440	842	219,282	48	487,151
Jul	216,891	835	217,726	56	475,185
Aug	218,843	663	219,506	355	503,639
Sep	214,671	1,660	216,331	822	491,535
Oct	200,877	1,339	202,216	852	482,204
Nov	190,066	847	190,913	276	455,326
Dec	176,424	1,139	177,563	58	437,320
Total	2,446,176	10,103	2,456,279	2,644	5,564,693
Total Certified					
Jan	435,487	4,544	440,031	168	3,314,421
Feb	395,776	2,187	397,963	156	2,908,396
Mar	466,550	4,304	470,854	235	3,430,969
Apr	445,152	4,044	449,196	227	3,316,884
May	445,319	3,817	449,136	247	3,270,088
Jun	463,160	4,313	467,473	272	3,428,552
Jul	456,440	5,535	461,975	334	3,391,905
Aug	463,730	5,852	469,582	616	3,515,789
Sep	451,821	6,655	458,476	1,071	3,490,683
Oct	461,535	4,615	466,150	1,074	3,424,570
Nov	479,617	3,575	483,192	523	3,331,533
Dec	434,444	5,521	439,965	345	3,331,139
Total	5,399,031	54,962	5,453,993	5,268	40,154,929

¹ Ready-to-cook weights.

**Poultry Slaughter: Ante-Mortem Condemnations by Type,
by Month and Annual Total, United States, 2004**

	Chickens					Ducks
	Young	Mature			Total	
		Light	Heavy	Total		
	<i>1,000 Pounds</i>	<i>1,000 Pounds</i>	<i>1,000 Pounds</i>	<i>1,000 Pounds</i>	<i>1,000 Pounds</i>	<i>1,000 Pounds</i>
Live Weight Condemned						
Jan	16,733	458	720	1,178	17,911	25
Feb	14,480	223	414	637	15,117	30
Mar	14,120	264	522	786	14,906	27
Apr	16,153	419	471	890	17,043	30
May	14,024	400	415	815	14,839	24
Jun	16,222	536	949	1,485	17,707	121
Jul	18,086	607	1,001	1,608	19,694	30
Aug	16,181	550	687	1,237	17,418	28
Sep	14,282	446	580	1,026	15,308	27
Oct	14,776	445	428	873	15,649	23
Nov	14,514	271	371	642	15,156	27
Dec	18,439	313	661	974	19,413	159
Total	188,010	4,932	7,219	12,151	200,161	551
	<i>Percent</i>	<i>Percent</i>	<i>Percent</i>	<i>Percent</i>	<i>Percent</i>	<i>Percent</i>
Percent of Total Weight Condemned ¹						
Jan	0.44	2.27	1.64	1.84	0.46	0.17
Feb	0.43	1.30	1.15	1.20	0.44	0.23
Mar	0.36	1.28	1.10	1.15	0.37	0.18
Apr	0.42	2.04	0.99	1.30	0.44	0.21
May	0.37	1.96	0.95	1.27	0.39	0.17
Jun	0.41	2.55	1.93	2.12	0.44	0.82
Jul	0.47	2.89	2.01	2.27	0.50	0.21
Aug	0.40	2.58	1.31	1.68	0.42	0.19
Sep	0.35	2.15	1.09	1.38	0.37	0.18
Oct	0.38	2.26	0.85	1.24	0.39	0.16
Nov	0.39	1.40	0.80	0.98	0.40	0.18
Dec	0.48	1.52	1.37	1.41	0.50	0.98
Total	0.41	2.03	1.27	1.50	0.43	0.32

See footnote(s) at end of table.

--continued

**Poultry Slaughter: Ante-Mortem Condemnations by Type,
by Month and Annual Total, United States, 2004 (continued)**

Month	Turkeys			Other Poultry	Total Poultry
	Young	Old	Total		
	<i>1,000 Pounds</i>	<i>1,000 Pounds</i>	<i>1,000 Pounds</i>	<i>1,000 Pounds</i>	<i>1,000 Pounds</i>
Live Weight Condemned					
Jan	2,093	40	2,133		20,069
Feb	1,951	33	1,984	1	17,132
Mar	2,509	25	2,534		17,467
Apr	2,308	41	2,349		19,422
May	1,678	71	1,749		16,612
Jun	1,738	41	1,779	1	19,608
Jul	2,048	63	2,111	3	21,838
Aug	3,101	41	3,142	6	20,594
Sep	1,937	37	1,974	6	17,315
Oct	1,534	26	1,560	7	17,239
Nov	1,586	34	1,620	3	16,806
Dec	1,493	46	1,539	1	21,112
Total	23,976	498	24,474	28	225,214
	<i>Percent</i>	<i>Percent</i>	<i>Percent</i>	<i>Percent</i>	<i>Percent</i>
Percent of Total Weight Condemned ¹					
Jan	0.38	0.66	0.38	0.07	0.45
Feb	0.38	1.15	0.39	0.44	0.44
Mar	0.42	0.41	0.42	0.11	0.38
Apr	0.41	0.75	0.41	0.08	0.44
May	0.30	1.35	0.31	0.10	0.38
Jun	0.30	0.70	0.30	0.14	0.43
Jul	0.35	0.85	0.36	0.63	0.48
Aug	0.53	0.53	0.53	0.55	0.43
Sep	0.34	0.41	0.34	0.32	0.37
Oct	0.26	0.43	0.27	0.38	0.37
Nov	0.26	0.71	0.27	0.30	0.38
Dec	0.27	0.63	0.28	0.12	0.47
Total	0.35	0.67	0.35	0.32	0.42

¹ Pounds condemned as a percent of live weight pounds inspected.

**Poultry Slaughter: Post-Mortem Condemnations by Type,
by Month and Annual Total, United States, 2004**

	Chickens					Ducks
	Young	Mature			Total	
		Light	Heavy	Total		
	<i>1,000 Pounds</i>	<i>1,000 Pounds</i>	<i>1,000 Pounds</i>	<i>1,000 Pounds</i>	<i>1,000 Pounds</i>	<i>1,000 Pounds</i>
N. Y. Dressed Weight Condemned						
Jan	32,084	1,576	1,480	3,056	35,140	350
Feb	36,179	1,716	1,038	2,754	38,933	348
Mar	40,053	1,548	1,787	3,335	43,388	382
Apr	36,940	1,624	1,777	3,401	40,341	347
May	33,784	1,515	1,628	3,143	36,927	326
Jun	38,454	1,412	1,444	2,856	41,310	327
Jul	36,240	1,266	1,554	2,820	39,060	308
Aug	38,546	1,332	1,730	3,062	41,608	310
Sep	38,415	1,360	1,696	3,056	41,471	300
Oct	38,271	1,387	1,818	3,205	41,476	368
Nov	34,771	1,356	1,574	2,930	37,701	409
Dec	38,637	1,566	1,478	3,044	41,681	474
Total	442,374	17,658	19,004	36,662	479,036	4,249
	<i>Percent</i>	<i>Percent</i>	<i>Percent</i>	<i>Percent</i>	<i>Percent</i>	<i>Percent</i>
Percent Condemned ¹						
Jan	0.93	8.67	3.74	5.30	1.00	2.66
Feb	1.20	11.13	3.20	5.76	1.27	2.97
Mar	1.13	8.34	4.18	5.44	1.20	2.84
Apr	1.08	8.77	4.14	5.54	1.16	2.68
May	1.00	8.23	4.12	5.43	1.08	2.63
Jun	1.09	7.46	3.27	4.53	1.15	2.46
Jul	1.04	6.71	3.46	4.42	1.10	2.40
Aug	1.06	6.96	3.66	4.61	1.12	2.37
Sep	1.06	7.26	3.53	4.58	1.12	2.25
Oct	1.08	7.84	3.99	5.07	1.15	2.90
Nov	1.03	7.77	3.78	4.96	1.09	3.06
Dec	1.12	8.44	3.40	4.91	1.19	3.26
Total	1.07	8.08	3.71	5.02	1.13	2.71

See footnote(s) at end of table.

--continued

**Poultry Slaughter: Post-Mortem Condemnations by Type,
by Month and Annual Total, United States, 2004 (continued)**

Month	Turkeys			Other Poultry	Total Poultry
	Young	Old	Total		
	<i>1,000 Pounds</i>	<i>1,000 Pounds</i>	<i>1,000 Pounds</i>	<i>1,000 Pounds</i>	<i>1,000 Pounds</i>
N.Y. Dressed Weight Condemned					
Jan	9,437	342	9,779	3	45,272
Feb	9,195	226	9,421	5	48,707
Mar	11,479	494	11,973	9	55,752
Apr	9,774	361	10,135	5	50,828
May	9,333	365	9,698	5	46,956
Jun	10,109	378	10,487	8	52,132
Jul	10,057	417	10,474	12	49,854
Aug	10,725	328	11,053	11	52,982
Sep	10,220	395	10,615	12	52,398
Oct	9,678	249	9,927	12	51,783
Nov	9,707	286	9,993	8	48,111
Dec	9,002	369	9,371	6	51,532
Total	118,716	4,210	122,926	96	606,307
	<i>Percent</i>	<i>Percent</i>	<i>Percent</i>	<i>Percent</i>	<i>Percent</i>
Percent Condemned ¹					
Jan	1.91	6.34	1.96	1.51	1.13
Feb	2.00	8.87	2.03	2.23	1.38
Mar	2.16	8.99	2.23	2.91	1.34
Apr	1.93	7.36	1.99	1.80	1.27
May	1.86	7.64	1.91	1.74	1.19
Jun	1.92	7.19	1.97	2.20	1.26
Jul	1.93	6.33	1.98	2.67	1.22
Aug	2.03	4.73	2.06	1.24	1.24
Sep	2.00	4.87	2.05	0.78	1.24
Oct	1.85	4.62	1.88	0.75	1.25
Nov	1.78	6.59	1.82	1.02	1.20
Dec	1.84	5.63	1.89	1.25	1.28
Total	1.93	6.35	1.98	1.31	1.25

¹ Pounds condemned as a percent of N.Y. dressed weight inspected.

**Young Chickens Slaughtered: Number, Live Weight, Average Live Weight,
Pounds Certified, and Post-Mortem Condemnations, by Month and
Annual Total, by State, 2004**

State and Month	Number Slaughtered	Live Weight	Average Live Weight	Pounds Certified ¹	Post-Mortem Condemnations	
					NY Dressed Weight	Percent ²
	<i>1,000 Head</i>	<i>1,000 Pounds</i>	<i>Pounds</i>	<i>1,000 Pounds</i>	<i>1,000 Pounds</i>	<i>Percent</i>
Alabama						
Jan	87,715	457,659	5.22	336,105	3,879	0.94
Feb	78,773	403,971	5.13	296,343	4,463	1.23
Mar	92,705	484,867	5.23	349,825	5,219	1.20
Apr	90,015	470,667	5.23	346,666	4,783	1.13
May	86,880	447,995	5.16	327,816	4,462	1.11
Jun	93,387	477,149	5.11	348,906	4,850	1.13
Jul	90,019	466,207	5.18	344,444	4,753	1.13
Aug	97,686	500,413	5.12	370,548	4,742	1.05
Sep	92,824	487,260	5.25	358,510	5,330	1.22
Oct	89,463	479,560	5.36	351,673	4,884	1.13
Nov	88,845	463,764	5.22	345,797	4,376	1.05
Dec	89,505	467,679	5.23	347,972	5,080	1.21
Total	1,077,817	5,607,191	5.20	4,124,605	56,821	1.13
Arkansas						
Jan	101,814	521,560	5.12	370,367	4,102	0.87
Feb	89,775	444,569	4.95	325,342	4,546	1.14
Mar	105,891	518,082	4.89	374,314	4,922	1.06
Apr	100,875	499,322	4.95	360,012	5,113	1.14
May	96,227	482,090	5.01	352,240	4,494	1.04
Jun	101,290	513,419	5.07	369,054	5,323	1.15
Jul	100,513	503,683	5.01	361,912	4,812	1.06
Aug	105,398	530,404	5.03	381,536	5,474	1.15
Sep	102,101	518,348	5.08	377,552	5,299	1.14
Oct	101,135	517,952	5.12	375,367	5,692	1.22
Nov	97,926	498,421	5.09	359,179	5,110	1.14
Dec	98,558	488,910	4.96	352,992	5,113	1.16
Total	1,201,503	6,036,760	5.02	4,359,867	60,000	1.10
Delaware						
Jan	24,080	156,553	6.50	112,575	2,086	1.48
Feb	21,401	134,984	6.31	98,869	1,780	1.47
Mar	24,248	155,574	6.42	111,759	2,140	1.53
Apr	23,001	146,387	6.36	105,773	2,178	1.65
May	23,330	148,019	6.34	106,510	2,678	2.01
Jun	24,308	157,070	6.46	112,747	2,040	1.44
Jul	24,372	152,418	6.25	110,401	1,819	1.33
Aug	25,746	169,305	6.58	121,876	2,640	1.73
Sep	24,744	164,264	6.64	118,010	1,996	1.35
Oct	24,165	156,631	6.48	114,907	1,962	1.39
Nov	23,112	149,517	6.47	107,738	1,938	1.44
Dec	24,254	154,485	6.37	111,103	2,225	1.60
Total	286,761	1,845,207	6.43	1,332,268	25,482	1.53

See footnote(s) at end of table.

--continued

**Young Chickens Slaughtered: Number, Live Weight, Average Live Weight,
Pounds Certified, and Post-Mortem Condemnations, by Month and
Annual Total, by State, 2004 (continued)**

State and Month	Number Slaughtered	Live Weight	Average Live Weight	Pounds Certified ¹	Post-Mortem Condemnations	
					NY Dressed Weight	Percent ²
	<i>1,000 Head</i>	<i>1,000 Pounds</i>	<i>Pounds</i>	<i>1,000 Pounds</i>	<i>1,000 Pounds</i>	<i>Percent</i>
Georgia						
Jan	104,155	531,300	5.10	379,354	3,459	0.72
Feb	95,147	463,223	4.87	336,534	4,560	1.09
Mar	106,673	527,091	4.94	379,833	5,638	1.19
Apr	103,597	516,977	4.99	372,615	4,147	0.89
May	99,446	501,459	5.04	364,957	3,794	0.84
Jun	105,823	529,198	5.00	383,138	4,525	0.95
Jul	106,733	531,826	4.98	385,861	4,195	0.88
Aug	108,968	547,812	5.03	397,193	4,354	0.88
Sep	108,574	552,454	5.09	400,165	4,473	0.90
Oct	105,310	542,029	5.15	393,357	4,054	0.83
Nov	101,471	511,265	5.04	373,010	3,483	0.76
Dec	106,096	539,294	5.08	392,894	4,518	0.93
Total	1,251,993	6,293,928	5.03	4,558,911	51,200	0.90
Kentucky						
Jan	18,181	103,540	5.69	75,145	710	0.76
Feb	18,522	96,923	5.23	70,998	781	0.90
Mar	25,095	124,010	4.94	91,400	828	0.74
Apr	22,227	118,442	5.33	86,698	855	0.80
May	22,392	120,413	5.38	89,365	757	0.70
Jun	23,466	123,894	5.28	91,961	1,095	0.98
Jul	23,254	123,257	5.30	91,398	697	0.63
Aug	24,517	126,551	5.16	94,676	728	0.64
Sep	24,189	128,838	5.33	95,194	1,029	0.89
Oct	23,056	125,822	5.46	94,952	1,287	1.14
Nov	21,248	116,302	5.47	88,470	1,114	1.06
Dec	21,890	119,108	5.44	88,626	1,096	1.02
Total	268,037	1,427,100	5.32	1,058,883	10,977	0.85

See footnote(s) at end of table.

--continued

**Young Chickens Slaughtered: Number, Live Weight, Average Live Weight,
Pounds Certified, and Post-Mortem Condemnations, by Month and
Annual Total, by State, 2004 (continued)**

State and Month	Number Slaughtered	Live Weight	Average Live Weight	Pounds Certified ¹	Post-Mortem Condemnations	
					NY Dressed Weight	Percent ²
	<i>1,000 Head</i>	<i>1,000 Pounds</i>	<i>Pounds</i>	<i>1,000 Pounds</i>	<i>1,000 Pounds</i>	<i>Percent</i>
Louisiana						
Jan	12,678	67,643	5.34	52,595	287	0.47
Feb	11,993	66,924	5.58	47,710	330	0.55
Mar	16,355	90,739	5.55	61,614	402	0.49
Apr	15,858	87,103	5.49	62,489	388	0.49
May	15,329	83,073	5.42	59,524	353	0.47
Jun	15,938	85,898	5.39	63,157	354	0.46
Jul	16,109	84,922	5.27	62,926	405	0.53
Aug	16,772	94,337	5.62	63,615	393	0.46
Sep	15,821	87,167	5.51	61,001	813	1.04
Oct	15,839	89,975	5.68	64,060	561	0.69
Nov	15,714	88,630	5.64	63,224	437	0.55
Dec	16,229	92,344	5.69	66,387	485	0.58
Total	184,635	1,018,755	5.52	728,302	5,208	0.57
Maryland						
Jan	12,633	63,747	5.05	45,902	738	1.29
Feb	11,825	58,559	4.95	41,944	674	1.28
Mar	12,993	65,776	5.06	47,173	757	1.28
Apr	11,955	59,734	5.00	43,854	737	1.37
May	12,438	62,132	5.00	44,262	648	1.16
Jun	12,517	63,487	5.07	46,457	602	1.05
Jul	12,428	62,670	5.04	45,239	591	1.05
Aug	13,238	66,868	5.05	47,688	658	1.09
Sep	13,126	67,020	5.11	48,491	705	1.17
Oct	12,796	63,206	4.94	45,335	752	1.32
Nov	11,940	56,887	4.76	41,104	709	1.38
Dec	11,983	57,220	4.77	41,545	599	1.16
Total	149,872	747,306	4.99	538,994	8,170	1.21
Mississippi						
Jan	63,565	345,169	5.43	261,035	2,444	0.79
Feb	58,134	314,157	5.40	239,827	2,912	1.03
Mar	70,439	368,390	5.23	279,147	2,679	0.81
Apr	66,207	355,952	5.38	270,371	2,944	0.92
May	64,172	352,410	5.49	266,452	2,252	0.71
Jun	67,428	357,845	5.31	274,808	2,601	0.81
Jul	66,647	359,428	5.39	271,096	2,651	0.82
Aug	68,629	375,641	5.47	283,396	2,748	0.81
Sep	67,033	370,071	5.52	274,120	3,467	1.04
Oct	64,960	364,277	5.61	271,525	2,907	0.89
Nov	61,807	342,809	5.55	258,057	2,465	0.80
Dec	63,078	353,383	5.60	262,060	2,750	0.86
Total	782,099	4,259,532	5.45	3,211,894	32,820	0.86

See footnote(s) at end of table.

--continued

**Young Chickens Slaughtered: Number, Live Weight, Average Live Weight,
Pounds Certified, and Post-Mortem Condemnations, by Month and
Annual Total, by State, 2004 (continued)**

State and Month	Number Slaughtered	Live Weight	Average Live Weight	Pounds Certified ¹	Post-Mortem Condemnations	
					NY Dressed Weight	Percent ²
	<i>1,000 Head</i>	<i>1,000 Pounds</i>	<i>Pounds</i>	<i>1,000 Pounds</i>	<i>1,000 Pounds</i>	<i>Percent</i>
Missouri						
Jan	33,125	152,706	4.61	112,705	1,243	0.90
Feb	29,616	135,158	4.56	102,246	1,393	1.14
Mar	35,808	154,438	4.31	111,150	1,538	1.11
Apr	32,471	149,068	4.59	109,926	1,454	1.08
May	33,291	156,099	4.69	113,411	1,193	0.85
Jun	34,402	164,587	4.78	120,244	1,130	0.76
Jul	34,860	163,966	4.70	122,433	1,256	0.85
Aug	37,386	171,703	4.59	125,151	1,298	0.84
Sep	34,941	167,479	4.79	121,187	1,280	0.85
Oct	33,849	162,173	4.79	117,511	1,143	0.78
Nov	33,579	152,218	4.53	113,569	1,133	0.83
Dec	33,482	157,524	4.70	117,047	1,413	1.00
Total	406,810	1,887,119	4.64	1,386,580	15,474	0.91
North Carolina						
Jan	56,177	355,914	6.34	278,236	4,040	1.26
Feb	49,676	308,802	6.22	222,628	4,274	1.54
Mar	59,253	361,766	6.11	277,375	4,505	1.38
Apr	53,448	338,806	6.34	263,274	3,797	1.25
May	56,318	351,192	6.24	269,962	3,522	1.11
Jun	58,091	365,538	6.29	279,451	5,587	1.70
Jul	57,333	357,684	6.24	277,631	4,032	1.25
Aug	57,942	364,690	6.29	282,971	4,805	1.46
Sep	58,163	373,742	6.43	288,498	4,223	1.26
Oct	55,878	368,187	6.59	277,991	3,577	1.08
Nov	54,034	350,531	6.49	269,147	3,452	1.09
Dec	54,544	352,250	6.46	270,900	4,699	1.48
Total	670,857	4,249,102	6.33	3,258,064	50,513	1.32
Ohio						
Jan	3,493	18,511	5.30	13,578	229	1.38
Feb	3,010	16,180	5.38	11,906	185	1.27
Mar	3,491	18,678	5.35	13,760	261	1.55
Apr	3,285	17,746	5.40	13,381	224	1.41
May	3,399	18,232	5.36	13,360	240	1.46
Jun	3,341	17,362	5.20	12,555	225	1.44
Jul	3,479	18,458	5.31	13,540	204	1.23
Aug	3,470	18,830	5.43	13,816	194	1.14
Sep	3,513	19,069	5.43	14,028	211	1.23
Oct	3,342	18,555	5.55	13,789	217	1.30
Nov	3,146	17,428	5.54	12,799	260	1.66
Dec	3,214	17,674	5.50	12,728	342	2.15
Total	40,183	216,723	5.39	159,240	2,792	1.43

See footnote(s) at end of table.

--continued

**Young Chickens Slaughtered: Number, Live Weight, Average Live Weight,
Pounds Certified, and Post-Mortem Condemnations, by Month and
Annual Total, by State, 2004 (continued)**

State and Month	Number Slaughtered	Live Weight	Average Live Weight	Pounds Certified ¹	Post-Mortem Condemnations	
					NY Dressed Weight	Percent ²
	<i>1,000 Head</i>	<i>1,000 Pounds</i>	<i>Pounds</i>	<i>1,000 Pounds</i>	<i>1,000 Pounds</i>	<i>Percent</i>
Pennsylvania						
Jan	9,456	49,698	5.26	34,933	791	1.77
Feb	8,997	44,821	4.98	31,074	743	1.84
Mar	9,989	51,851	5.19	36,446	822	1.76
Apr	9,052	48,697	5.38	34,137	769	1.75
May	9,612	50,674	5.27	35,820	805	1.76
Jun	10,199	53,421	5.24	37,478	829	1.73
Jul	10,014	52,060	5.20	36,045	1,180	2.52
Aug	8,946	46,759	5.23	32,459	720	1.71
Sep	10,062	54,415	5.41	38,953	690	1.41
Oct	10,240	55,001	5.37	39,711	723	1.46
Nov	9,378	49,619	5.29	35,339	747	1.67
Dec	9,720	51,831	5.33	36,089	844	1.81
Total	115,665	608,847	5.26	428,484	9,663	1.76
South Carolina						
Jan	19,216	113,209	5.89	82,136	608	0.60
Feb	18,796	104,220	5.54	83,701	725	0.77
Mar	22,201	131,527	5.92	98,855	887	0.75
Apr	21,414	126,725	5.92	95,174	845	0.74
May	21,212	123,520	5.82	92,192	739	0.66
Jun	21,813	125,747	5.76	94,230	779	0.69
Jul	22,007	124,731	5.67	93,834	1,281	1.14
Aug	22,775	127,851	5.61	95,186	760	0.66
Sep	22,048	129,316	5.87	97,061	775	0.67
Oct	21,247	124,976	5.88	93,758	1,703	1.51
Nov	21,000	125,524	5.98	94,929	692	0.61
Dec	20,294	121,045	5.96	91,367	702	0.64
Total	254,023	1,478,391	5.82	1,112,423	10,496	0.79
Tennessee						
Jan	18,950	99,237	5.24	72,206	874	0.98
Feb	17,174	88,349	5.14	63,530	948	1.19
Mar	19,572	101,470	5.18	76,948	818	0.90
Apr	21,976	104,183	4.74	77,722	772	0.82
May	19,339	95,986	4.96	73,359	680	0.79
Jun	19,879	102,590	5.16	77,893	743	0.81
Jul	19,715	98,755	5.01	76,470	765	0.86
Aug	21,207	107,381	5.06	82,515	764	0.79
Sep	19,875	101,722	5.12	78,522	738	0.81
Oct	18,222	94,845	5.20	72,736	701	0.82
Nov	20,011	102,706	5.13	79,310	758	0.82
Dec	19,864	104,664	5.27	79,938	908	0.96
Total	235,784	1,201,888	5.10	911,149	9,469	0.88

See footnote(s) at end of table.

--continued

**Young Chickens Slaughtered: Number, Live Weight, Average Live Weight,
Pounds Certified, and Post-Mortem Condemnations, by Month and
Annual Total, by State, 2004 (continued)**

State and Month	Number Slaughtered	Live Weight	Average Live Weight	Pounds Certified ¹	Post-Mortem Condemnations	
					NY Dressed Weight	Percent ²
	<i>1,000 Head</i>	<i>1,000 Pounds</i>	<i>Pounds</i>	<i>1,000 Pounds</i>	<i>1,000 Pounds</i>	<i>Percent</i>
Texas						
Jan	54,036	268,811	4.97	219,474	2,170	0.90
Feb	46,303	235,063	5.08	180,483	3,479	1.64
Mar	56,930	287,992	5.06	223,205	3,480	1.34
Apr	54,101	275,607	5.09	213,041	3,176	1.28
May	54,561	270,963	4.97	210,469	2,532	1.04
Jun	56,578	294,162	5.20	227,671	2,654	1.00
Jul	56,286	291,215	5.17	224,667	3,046	1.16
Aug	58,510	301,055	5.15	231,243	2,631	0.97
Sep	57,625	298,416	5.18	233,259	2,561	0.95
Oct	55,678	283,707	5.10	220,639	2,861	1.12
Nov	53,551	278,283	5.20	217,899	2,718	1.09
Dec	54,970	277,344	5.05	215,556	2,739	1.10
Total	659,129	3,362,618	5.10	2,617,606	34,047	1.12
Virginia						
Jan	28,848	145,156	5.03	104,862	1,203	0.92
Feb	25,331	123,916	4.89	91,625	1,115	1.00
Mar	28,839	140,590	4.87	102,689	1,340	1.06
Apr	27,494	140,682	5.12	103,844	1,240	0.98
May	26,988	139,128	5.16	103,513	1,199	0.96
Jun	29,679	151,055	5.09	111,787	1,616	1.19
Jul	28,256	140,567	4.97	105,285	1,144	0.90
Aug	29,145	147,207	5.05	109,422	1,201	0.91
Sep	29,290	151,284	5.17	110,960	1,134	0.83
Oct	28,123	144,670	5.14	108,306	1,733	1.33
Nov	27,042	139,263	5.15	103,419	1,282	1.02
Dec	27,889	139,395	5.00	103,526	1,786	1.42
Total	336,924	1,702,913	5.05	1,259,238	15,993	1.04

See footnote(s) at end of table.

--continued

**Young Chickens Slaughtered: Number, Live Weight, Average Live Weight,
Pounds Certified, and Post-Mortem Condemnations, by Month and
Annual Total, by State, 2004**

State and Month	Number Slaughtered	Live Weight	Average Live Weight	Pounds Certified ¹	Post-Mortem Condemnations	
					NY Dressed Weight	Percent ²
	<i>1,000 Head</i>	<i>1,000 Pounds</i>	<i>Pounds</i>	<i>1,000 Pounds</i>	<i>1,000 Pounds</i>	<i>Percent</i>
Other States ³						
Jan	72,854	373,404	5.1	272,391	3,221	0.96
Feb	61,885	307,260	5.0	222,991	3,271	1.18
Mar	74,547	373,218	5.0	267,683	3,817	1.14
Apr	70,587	349,383	5.0	255,266	3,518	1.12
May	69,787	340,411	4.9	248,223	3,436	1.12
Jun	70,718	354,294	5.0	254,825	3,501	1.10
Jul	69,751	348,872	5.0	252,658	3,409	1.09
Aug	70,395	353,658	5.0	256,167	4,436	1.39
Sep	70,814	359,586	5.1	258,566	3,691	1.14
Oct	67,213	343,219	5.1	247,997	3,514	1.14
Nov	64,552	322,399	5.0	233,871	4,097	1.41
Dec	67,241	340,117	5.1	246,193	3,338	1.09
Total	830,344	4,165,821	5.0	3,016,831	43,249	1.15

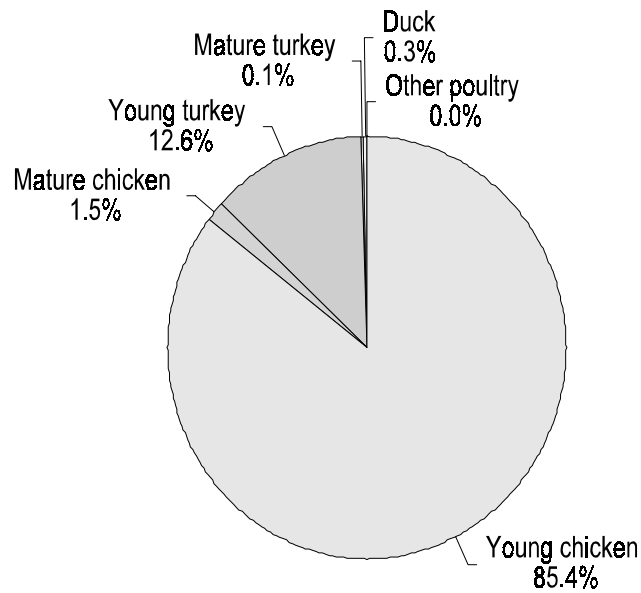
* Included in "Other States" to avoid disclosing individual operations.

¹ Total chilled and frozen pounds certified, ready-to-cook weights.

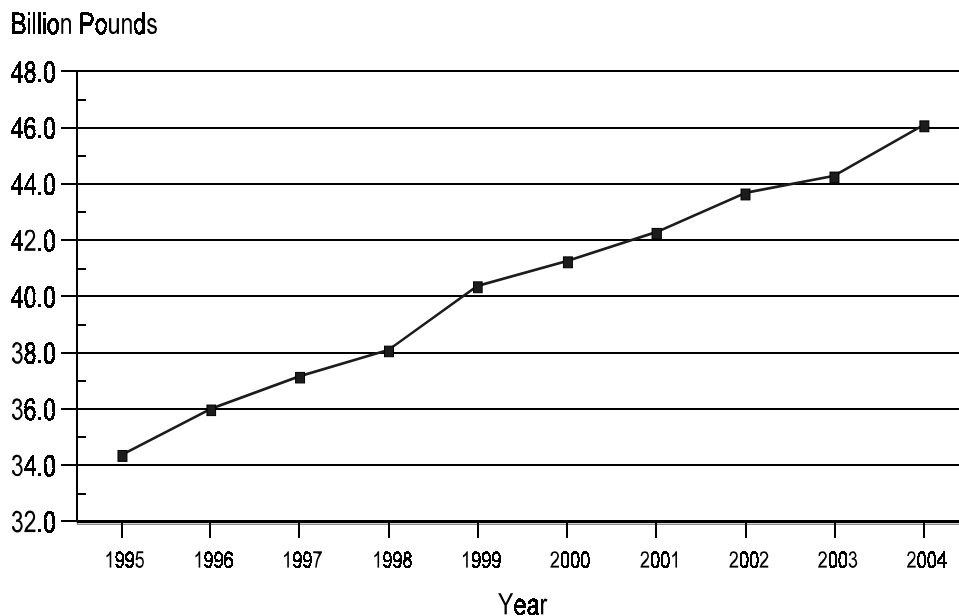
² Pounds condemned as a percent of N.Y. dressed weight inspected.

³ Sum of confidential figures replaced by an asterisk (*) in the States listed above.

Total Live Weight of Poultry Slaughtered Under Federal Inspection, U.S., 2004 Percent of Total



Total Live Weight of Young Chickens Slaughtered Under Federal Inspection, U.S., 1995-2004



**Young Chickens Slaughtered: Number Condemned Post-Mortem by Cause,
by Month and Annual Total, by State and United States, 2004**

State and Month	Tuber- culosis	Leukosis	Septicemia	Airsac- culitis	Synovitis	Tumors
	<i>Number of Head</i>	<i>Number of Head</i>	<i>Number of Head</i>	<i>Number of Head</i>	<i>Number of Head</i>	<i>Number of Head</i>
Alabama						
Jan		*	119,993	50,977	793	*
Feb		*	127,711	56,063	*	3,780
Mar		*	116,825	51,887	*	*
Apr		349	110,960	54,760	*	*
May		340	118,713	81,652	*	*
Jun		400	125,551	66,863	1,379	2,834
Jul		233	125,739	88,554	*	*
Aug		385	126,366	47,996	*	*
Sep		*	129,509	54,808	*	3,077
Oct		259	115,309	40,877	*	*
Nov		234	106,087	36,781	*	*
Dec		349	108,809	60,538	*	*
Total		4,751	1,431,572	691,756	19,029	38,040
Arkansas						
Jan		1,316	192,573	116,004	3,849	2,879
Feb		845	182,411	136,270	3,113	2,052
Mar		768	198,687	115,685	3,481	2,264
Apr		1,179	171,728	89,600	3,023	1,959
May		*	154,126	66,042	*	1,795
Jun		*	162,590	58,462	*	1,599
Jul		*	152,638	47,940	*	1,733
Aug		*	156,074	50,168	*	1,773
Sep		*	154,241	50,744	*	1,796
Oct		*	157,323	52,260	*	1,784
Nov		*	160,853	60,115	*	1,921
Dec		1,638	184,910	101,693	4,244	2,383
Total		11,872	2,028,154	944,983	45,585	23,938
California						
Jan		*	*	7,116	572	994
Feb		*	*	4,618	1,034	1,038
Mar		1,316	*	5,180	367	801
Apr		*	*	4,051	198	719
May		*	*	3,588	205	1,028
Jun		*	*	3,916	215	924
Jul		*	*	4,117	191	744
Aug		660	*	3,472	413	602
Sep		*	*	6,365	*	464
Oct		*	*	6,277	*	615
Nov		*	*	7,175	218	508
Dec		*	*	6,524	188	734
Total		11,210	1,172,531	62,399	4,599	9,171

See footnote(s) at end of table.

--continued

**Young Chickens Slaughtered: Number Condemned Post-Mortem by Cause,
by Month and Annual Total, by State and United States, 2004 (continued)**

State and Month	Bruises	Cadaver	Contami- nation	Overscald	Other	Total All Causes
	<i>Number of Head</i>	<i>Number of Head</i>	<i>Number of Head</i>	<i>Number of Head</i>	<i>Number of Head</i>	<i>Number of Head</i>
Alabama						
Jan	3,616	19,737	22,291	11,008	107,996	341,520
Feb	3,369	25,871	22,220	10,819	134,356	385,311
Mar	4,329	24,643	20,670	7,251	159,053	389,495
Apr	3,998	22,609	22,052	11,023	140,059	370,030
May	4,045	25,224	21,689	8,279	125,743	389,694
Jun	4,152	25,998	26,078	8,834	118,489	380,578
Jul	4,303	38,151	26,545	4,801	113,019	405,517
Aug	4,440	31,504	23,727	10,273	118,544	368,582
Sep	3,955	26,402	24,113	14,281	155,171	415,099
Oct	3,608	23,517	20,480	6,517	119,398	335,779
Nov	3,226	24,268	20,642	7,544	104,385	308,001
Dec	3,243	26,418	20,578	7,149	120,805	352,050
Total	46,284	314,342	271,085	107,779	1,517,018	4,441,656
Arkansas						
Jan	6,938	26,564	33,908	3,174	51,053	438,258
Feb	7,176	27,462	31,615	1,371	95,548	487,863
Mar	8,336	21,376	32,351	3,093	68,541	454,582
Apr	7,969	19,919	29,577	1,705	61,462	388,121
May	7,615	19,119	26,643	2,613	47,661	329,320
Jun	8,458	20,472	30,482	8,835	50,162	345,883
Jul	7,619	18,733	29,444	2,066	46,508	311,947
Aug	7,813	19,613	32,448	4,033	53,610	330,464
Sep	7,711	21,514	32,729	5,562	48,794	328,452
Oct	7,735	25,620	32,173	2,347	47,662	332,287
Nov	7,121	21,593	29,485	1,945	47,679	335,242
Dec	8,252	28,624	29,879	4,023	54,393	420,039
Total	92,743	270,609	370,734	40,767	673,073	4,502,458
California						
Jan	*	*	2,458	672	7,656	142,005
Feb	*	*	1,826	487	8,751	120,017
Mar	737	5,886	2,208	*	*	134,022
Apr	503	6,324	2,254	*	*	134,173
May	334	*	2,003	*	8,030	119,151
Jun	419	7,138	2,232	*	10,512	126,861
Jul	437	7,459	2,205	*	*	*
Aug	434	7,474	1,725	*	*	*
Sep	345	*	1,969	1,392	3,078	*
Oct	283	*	1,506	*	4,698	119,311
Nov	264	*	1,355	1,282	*	103,886
Dec	357	*	1,829	1,448	9,830	*
Total	8,488	77,953	23,570	24,598	96,846	1,491,365

See footnote(s) at end of table.

--continued

**Young Chickens Slaughtered: Number Condemned Post-Mortem by Cause,
by Month and Annual Total, by State and United States, 2004 (continued)**

State and Month	Tuber- culosis	Leukosis	Septicemia	Airsac- culitis	Synovitis	Tumors
	<i>Number of Head</i>	<i>Number of Head</i>	<i>Number of Head</i>	<i>Number of Head</i>	<i>Number of Head</i>	<i>Number of Head</i>
Delaware						
Jan		*	116,968	53,501	*	*
Feb		*	93,702	52,057	26	*
Mar		*	110,208	57,479	43	*
Apr		*	107,794	55,875	52	*
May		*	100,106	40,758	70	*
Jun		*	99,345	26,716	*	*
Jul		5,386	91,904	20,423	*	*
Aug		4,332	108,062	26,025	*	*
Sep		3,847	110,468	24,286	42	*
Oct		4,476	114,635	33,408	*	5,873
Nov		7,912	109,237	41,282	*	6,365
Dec		*	111,153	52,899	*	7,361
Total		127,447	1,273,582	484,709	1,310	68,930
Florida						
Jan		76	*	*	*	*
Feb		*	*	*	*	*
Mar		*	*	*	*	*
Apr		*	*	*	*	*
May		*	*	*	*	*
Jun		*	*	*	*	*
Jul		*	*	*	*	*
Aug		*	*	*	*	*
Sep		*	*	*	*	*
Oct		*	*	*	*	*
Nov		*	*	*	*	*
Dec		*	*	*	*	*
Total		355	170,377	67,720	6,158	16,933
Georgia						
Jan		416	87,305	62,510	316	4,786
Feb		386	82,867	73,979	197	4,295
Mar		590	83,589	60,150	333	4,752
Apr		509	80,744	48,595	420	3,564
May		*	77,262	35,816	*	3,621
Jun		*	83,618	33,572	*	3,372
Jul		*	79,163	26,655	*	3,448
Aug		254	70,128	24,312	382	4,154
Sep		*	72,487	24,622	*	4,081
Oct		405	75,758	34,360	232	4,200
Nov		374	70,444	32,396	185	4,219
Dec		345	76,422	62,537	175	4,505
Total		5,938	939,787	519,504	4,240	48,997

See footnote(s) at end of table.

--continued

**Young Chickens Slaughtered: Number Condemned Post-Mortem by Cause,
by Month and Annual Total, by State and United States, 2004 (continued)**

State and Month	Bruises	Cadaver	Contami- nation	Overscald	Other	Total All Causes
	<i>Number of Head</i>	<i>Number of Head</i>	<i>Number of Head</i>	<i>Number of Head</i>	<i>Number of Head</i>	<i>Number of Head</i>
Delaware						
Jan	2,232	15,015	12,662	2,622	28,890	242,340
Feb	2,012	10,332	10,883	2,692	33,528	221,266
Mar	2,584	11,342	11,404	*	49,686	261,925
Apr	2,380	10,759	10,620	1,939	46,769	268,589
May	2,476	11,916	10,416	4,388	52,465	242,957
Jun	2,569	18,954	12,090	3,355	31,177	210,132
Jul	2,459	20,050	11,776	5,032	31,224	193,951
Aug	2,522	17,975	11,491	3,835	35,974	215,501
Sep	2,369	18,883	12,735	*	35,317	221,088
Oct	2,316	14,253	11,661	*	40,276	232,155
Nov	2,030	8,069	8,834	*	46,732	233,564
Dec	2,418	11,297	10,512	2,213	52,825	272,103
Total	28,367	168,845	135,084	42,434	484,863	2,815,571
Florida						
Jan	853	4,056	*	752	11,575	59,693
Feb	*	*	*	*	*	*
Mar	*	*	*	*	*	*
Apr	*	*	*	*	*	*
May	*	*	*	*	*	*
Jun	*	*	*	*	*	*
Jul	*	*	*	*	*	*
Aug	*	*	*	*	*	*
Sep	*	*	*	*	*	*
Oct	*	*	*	*	*	*
Nov	*	*	*	*	*	*
Dec	*	*	*	*	*	*
Total	4,649	33,962	17,280	5,867	37,814	361,115
Georgia						
Jan	3,432	38,305	12,659	6,091	87,824	303,644
Feb	3,203	37,263	10,629	7,763	139,926	360,508
Mar	3,645	32,792	10,569	7,659	103,838	307,917
Apr	3,519	30,311	12,426	6,780	83,337	270,205
May	3,262	31,808	10,861	27,947	83,967	275,584
Jun	3,514	30,072	10,048	14,602	73,880	253,454
Jul	3,830	34,077	9,917	10,711	60,185	228,623
Aug	3,547	34,695	9,154	15,963	42,832	205,421
Sep	3,509	32,624	8,698	8,005	45,922	202,154
Oct	3,095	35,160	9,620	8,638	65,400	236,868
Nov	2,515	34,726	9,267	6,875	65,265	226,266
Dec	2,672	42,162	8,715	5,685	67,582	270,800
Total	39,743	413,995	122,563	126,719	919,958	3,141,444

See footnote(s) at end of table.

--continued

**Young Chickens Slaughtered: Number Condemned Post-Mortem by Cause,
by Month and Annual Total, by State and United States, 2004 (continued)**

State and Month	Tuber- culosis	Leukosis	Septicemia	Airsac- culitis	Synovitis	Tumors
	<i>Number of Head</i>	<i>Number of Head</i>	<i>Number of Head</i>	<i>Number of Head</i>	<i>Number of Head</i>	<i>Number of Head</i>
Indiana						
Jan		*	8,878	*	*	*
Feb		*	*	*	*	*
Mar		*	*	*	*	*
Apr		*	6,531	*	*	*
May		*	5,930	*	165	*
Jun		*	4,985	*	*	*
Jul		*	4,667	*	*	*
Aug		*	5,294	*	*	*
Sep		*	5,091	*	*	*
Oct		*	*	*	*	*
Nov		20	*	*	43	*
Dec		*	*	*	*	*
Total		524	70,663	75,453	1,258	1,321
Kentucky						
Jan		*	36,257	13,351	*	*
Feb		*	28,017	*	23	*
Mar		*	43,595	16,268	*	*
Apr		*	40,256	18,665	14	*
May		*	36,943	10,853	*	*
Jun		*	38,828	9,561	*	1,728
Jul		*	36,947	7,115	*	1,763
Aug		*	38,310	10,058	*	2,124
Sep		35	45,342	*	*	*
Oct		54	44,735	*	*	*
Nov		*	42,777	*	30	*
Dec		53	54,187	*	43	*
Total		573	486,194	370,696	350	25,902
Louisiana						
Jan		*	14,250	6,127	*	180
Feb		*	16,234	6,897	*	166
Mar		72	18,097	6,572	*	*
Apr		*	17,735	5,107	*	153
May		*	16,788	5,765	52	132
Jun		*	19,707	5,007	*	166
Jul		*	19,925	3,083	*	176
Aug		*	18,821	3,349	74	225
Sep		*	18,819	2,819	59	197
Oct		72	18,013	3,245	*	247
Nov		90	18,086	3,751	54	360
Dec		96	18,824	4,341	*	*
Total		966	215,299	56,063	774	2,876

See footnote(s) at end of table.

--continued

**Young Chickens Slaughtered: Number Condemned Post-Mortem by Cause,
by Month and Annual Total, by State and United States, 2004 (continued)**

State and Month	Bruises	Cadaver	Contami- nation	Overscald	Other	Total All Causes
	<i>Number of Head</i>	<i>Number of Head</i>	<i>Number of Head</i>	<i>Number of Head</i>	<i>Number of Head</i>	<i>Number of Head</i>
Indiana						
Jan	72	*	366	*	*	*
Feb	49	*	282	*	*	18,592
Mar	85	*	342	*	*	*
Apr	60	*	374	*	*	*
May	*	*	272	*	*	*
Jun	50	*	297	*	*	*
Jul	*	*	209	*	*	*
Aug	*	727	223	*	*	*
Sep	*	672	442	*	*	*
Oct	*	*	199	*	*	*
Nov	*	565	*	*	*	*
Dec	*	*	*	*	*	*
Total	846	13,911	3,500	547	21,966	189,989
Kentucky						
Jan	205	8,439	2,772	*	4,059	68,611
Feb	161	5,915	*	*	7,663	77,145
Mar	214	6,908	4,289	*	*	87,128
Apr	198	6,327	*	1,934	7,393	80,034
May	174	8,325	*	*	9,083	72,295
Jun	*	10,001	*	1,175	7,782	75,358
Jul	215	10,282	*	*	4,514	67,090
Aug	*	9,211	3,218	*	6,043	69,777
Sep	*	9,258	2,976	*	*	*
Oct	*	*	3,033	*	*	*
Nov	164	*	2,803	*	*	*
Dec	186	9,286	3,416	1,374	*	*
Total	2,242	105,236	43,411	16,581	85,424	1,136,609
Louisiana						
Jan	285	2,034	*	*	*	28,671
Feb	*	2,663	*	285	*	31,604
Mar	*	2,890	2,717	*	3,149	35,813
Apr	*	2,716	3,223	*	3,720	34,331
May	356	2,817	*	*	2,528	31,257
Jun	441	2,813	*	*	3,671	35,226
Jul	427	2,474	3,201	110	*	31,441
Aug	449	2,840	4,002	*	*	32,600
Sep	311	2,800	3,040	*	1,596	30,258
Oct	307	3,333	2,282	*	1,944	29,642
Nov	255	3,038	2,615	*	*	30,514
Dec	289	3,763	2,570	*	*	32,651
Total	4,465	34,181	33,513	7,672	28,199	384,008

See footnote(s) at end of table.

--continued

**Young Chickens Slaughtered: Number Condemned Post-Mortem by Cause,
by Month and Annual Total, by State and United States, 2004 (continued)**

State and Month	Tuber- culosis	Leukosis	Septicemia	Airsac- culitis	Synovitis	Tumors
	<i>Number of Head</i>	<i>Number of Head</i>	<i>Number of Head</i>	<i>Number of Head</i>	<i>Number of Head</i>	<i>Number of Head</i>
Maryland						
Jan		2,980	47,319	25,391	*	4,352
Feb		*	42,043	28,920	38	*
Mar		*	44,522	30,204	33	*
Apr		*	43,370	27,061	50	*
May		*	38,939	15,027	58	*
Jun		*	38,370	10,070	39	*
Jul		*	38,653	8,358	64	*
Aug		7,791	43,955	9,027	49	*
Sep		*	50,399	11,381	58	*
Oct		*	48,546	16,167	*	*
Nov		3,262	41,312	17,086	26	*
Dec		*	44,321	25,859	*	*
Total		78,741	521,749	224,551	706	41,463
Mississippi						
Jan		251	66,152	35,958	476	665
Feb		*	64,385	45,251	*	603
Mar		228	68,841	35,282	560	734
Apr		274	62,571	33,312	665	744
May		*	55,417	26,374	*	*
Jun		416	68,015	21,149	773	715
Jul		308	73,757	19,412	690	1,014
Aug		*	68,277	29,403	952	*
Sep		*	70,300	30,917	734	*
Oct		*	70,372	39,165	711	*
Nov		*	70,349	31,049	584	*
Dec		245	68,453	35,186	597	1,189
Total		4,298	806,889	382,458	7,790	13,099
Missouri						
Jan		1,024	78,356	26,710	*	2,050
Feb		1,009	78,331	31,523	463	1,901
Mar		1,643	90,358	30,828	454	2,079
Apr		1,643	75,015	21,477	440	*
May		1,263	64,395	12,385	278	*
Jun		1,259	67,811	11,311	*	*
Jul		1,254	68,306	12,936	436	*
Aug		1,325	81,776	13,101	300	2,218
Sep		1,387	66,762	11,893	*	2,071
Oct		1,411	70,818	10,680	*	2,040
Nov		1,093	73,301	14,255	371	*
Dec		1,196	95,365	25,135	*	2,390
Total		15,507	910,594	222,234	5,684	26,750

See footnote(s) at end of table.

--continued

**Young Chickens Slaughtered: Number Condemned Post-Mortem by Cause,
by Month and Annual Total, by State and United States, 2004 (continued)**

State and Month	Bruises	Cadaver	Contami- nation	Overscald	Other	Total All Causes
	<i>Number of Head</i>	<i>Number of Head</i>	<i>Number of Head</i>	<i>Number of Head</i>	<i>Number of Head</i>	<i>Number of Head</i>
Maryland						
Jan	*	14,328	*	*	15,668	132,066
Feb	*	11,274	*	529	*	151,663
Mar	*	8,830	*	*	*	149,349
Apr	*	8,124	*	549	*	137,702
May	*	7,854	*	634	*	117,129
Jun	*	*	*	794	*	102,321
Jul	*	8,734	*	1,805	*	112,421
Aug	*	9,498	*	839	*	110,430
Sep	*	8,994	*	*	*	123,887
Oct	*	9,096	*	2,378	*	133,917
Nov	*	*	*	*	*	*
Dec	*	8,497	*	*	*	*
Total	16,841	110,299	208,820	13,399	337,959	1,554,528
Mississippi						
Jan	2,601	21,088	10,618	279	47,668	185,756
Feb	2,479	17,362	11,176	669	65,783	209,493
Mar	2,553	17,935	10,904	531	62,120	199,688
Apr	2,711	15,288	10,435	659	59,864	186,523
May	2,291	12,023	8,188	1,013	47,942	155,557
Jun	2,387	12,583	9,093	740	38,845	154,716
Jul	2,458	13,317	9,774	802	36,661	158,193
Aug	2,521	13,386	10,394	1,517	37,996	166,064
Sep	2,326	13,221	13,350	455	33,833	167,049
Oct	2,288	14,168	10,369	609	42,183	181,635
Nov	2,007	14,602	12,637	1,064	36,333	170,289
Dec	1,708	16,399	11,936	1,962	38,296	175,971
Total	28,330	181,372	128,874	10,300	547,524	2,110,934
Missouri						
Jan	*	11,089	8,893	*	34,530	165,681
Feb	1,205	9,124	7,752	774	37,854	169,936
Mar	1,282	*	9,929	*	47,228	198,076
Apr	1,517	11,813	*	714	35,739	171,270
May	1,432	9,564	13,374	*	33,292	138,463
Jun	1,519	11,353	13,739	470	22,030	132,561
Jul	*	10,784	16,709	1,251	25,101	140,846
Aug	1,618	9,356	15,676	413	29,316	155,099
Sep	1,419	6,994	11,600	*	26,800	129,841
Oct	1,335	*	10,940	*	23,496	128,521
Nov	1,343	6,951	11,062	*	27,086	138,224
Dec	1,355	8,109	*	*	24,245	168,526
Total	16,928	115,551	150,272	6,807	366,717	1,837,044

See footnote(s) at end of table.

--continued

**Young Chickens Slaughtered: Number Condemned Post-Mortem by Cause,
by Month and Annual Total, by State and United States, 2004 (continued)**

State and Month	Tuber- culosis	Leukosis	Septicemia	Airsac- culitis	Synovitis	Tumors
	<i>Number of Head</i>	<i>Number of Head</i>	<i>Number of Head</i>	<i>Number of Head</i>	<i>Number of Head</i>	<i>Number of Head</i>
New York						
Jan		*	*	*	*	*
Feb		*	*	*	*	*
Mar		*	*	*	*	*
Apr		*	*	*	*	*
May		315	*	*	*	*
Jun		*	*	*	*	*
Jul		*	*	*	*	*
Aug		337	*	*	*	*
Sep		352	*	2,085	*	*
Oct		*	*	*	*	*
Nov		*	*	*	*	*
Dec		*	*	*	*	*
Total		4,466	44,093	25,882	3,205	4,845
North Carolina						
Jan		*	104,465	78,837	*	16,290
Feb		485	94,200	78,204	161	10,458
Mar		1,005	112,041	78,245	139	11,314
Apr		619	99,677	69,055	91	9,098
May		*	102,280	51,968	*	*
Jun		488	107,322	48,432	*	*
Jul		570	114,741	39,860	*	*
Aug		343	108,461	36,946	*	*
Sep		408	116,530	38,786	*	*
Oct		312	99,235	37,659	*	*
Nov		329	99,644	42,621	67	11,721
Dec		321	106,010	64,189	*	*
Total		6,066	1,264,606	664,802	1,990	126,362

See footnote(s) at end of table.

--continued

**Young Chickens Slaughtered: Number Condemned Post-Mortem by Cause,
by Month and Annual Total, by State and United States, 2004 (continued)**

State and Month	Bruises	Cadaver	Contami- nation	Overscald	Other	Total All Causes
	<i>Number of Head</i>	<i>Number of Head</i>	<i>Number of Head</i>	<i>Number of Head</i>	<i>Number of Head</i>	<i>Number of Head</i>
New York						
Jan	*	*	3,387	*	*	*
Feb	*	*	2,356	447	*	*
Mar	*	*	2,459	336	4,131	15,440
Apr	*	*	2,414	452	2,720	*
May	*	*	2,227	482	6,258	16,426
Jun	*	*	1,986	343	4,877	14,849
Jul	*	*	1,895	*	*	*
Aug	*	*	2,282	592	*	*
Sep	*	*	3,681	562	10,161	24,553
Oct	*	*	3,177	*	*	*
Nov	*	*	2,673	323	5,236	17,376
Dec	*	*	3,111	274	*	26,401
Total	10,398	9,490	31,648	6,733	80,381	221,141
North Carolina						
Jan	4,367	33,655	22,775	9,049	127,088	397,771
Feb	3,076	32,557	16,921	7,070	130,795	373,927
Mar	3,843	29,298	22,638	8,353	162,384	429,260
Apr	3,356	21,097	20,318	5,639	103,617	332,567
May	3,046	24,102	18,991	6,198	71,544	289,447
Jun	3,567	24,396	21,976	8,857	89,966	314,934
Jul	3,460	25,335	21,716	7,627	83,441	305,410
Aug	3,165	22,633	18,913	6,568	87,388	292,775
Sep	3,425	22,716	20,777	6,952	73,924	292,864
Oct	2,827	17,213	16,954	4,275	70,859	260,648
Nov	2,632	15,742	15,779	7,076	75,811	271,422
Dec	2,940	16,629	16,104	5,372	108,756	330,349
Total	39,704	285,373	233,862	83,036	1,185,573	3,891,374

See footnote(s) at end of table.

--continued

**Young Chickens Slaughtered: Number Condemned Post-Mortem by Cause,
by Month and Annual Total, by State and United States, 2004 (continued)**

State and Month	Tuber- culosis	Leukosis	Septicemia	Airsac- culitis	Synovitis	Tumors
	<i>Number of Head</i>	<i>Number of Head</i>	<i>Number of Head</i>	<i>Number of Head</i>	<i>Number of Head</i>	<i>Number of Head</i>
Ohio						
Jan		46	17,815	*	*	*
Feb		*	14,320	*	*	*
Mar		*	20,370	*	*	67
Apr		*	16,166	*	19	42
May		*	16,188	*	30	*
Jun		*	14,039	*	*	59
Jul		7	10,586	*	53	24
Aug		*	11,642	*	*	43
Sep		6	13,635	*	*	28
Oct		9	14,512	*	19	33
Nov		*	17,108	*	27	84
Dec		10	16,934	*	13	50
Total		235	183,315	26,015	485	839
Pennsylvania						
Jan		167	28,545	19,488	194	539
Feb		*	22,552	14,649	192	576
Mar		*	27,294	21,693	301	566
Apr		244	22,753	15,343	249	352
May		*	23,250	13,187	290	342
Jun		*	24,317	11,644	*	390
Jul		1,300	24,973	10,684	*	330
Aug		109	24,907	11,886	254	338
Sep		*	27,385	11,173	224	251
Oct		*	29,296	13,564	*	292
Nov		*	27,283	18,430	325	394
Dec		*	34,870	21,271	406	315
Total		8,960	317,425	183,012	3,711	4,685
South Carolina						
Jan		*	14,433	*	45	1,003
Feb		*	14,729	*	23	1,105
Mar		*	14,189	*	28	1,075
Apr		*	14,296	*	*	*
May		*	13,755	*	96	988
Jun		228	14,725	*	*	1,054
Jul		*	17,699	*	110	*
Aug		*	16,897	*	*	*
Sep		*	15,535	*	43	*
Oct		170	15,187	*	120	*
Nov		*	*	*	69	*
Dec		75	*	*	75	*
Total		1,686	177,132	142,444	873	11,382

See footnote(s) at end of table.

--continued

**Young Chickens Slaughtered: Number Condemned Post-Mortem by Cause,
by Month and Annual Total, by State and United States, 2004 (continued)**

State and Month	Bruises	Cadaver	Contami- nation	Overscald	Other	Total All Causes
	<i>Number of Head</i>	<i>Number of Head</i>	<i>Number of Head</i>	<i>Number of Head</i>	<i>Number of Head</i>	<i>Number of Head</i>
Ohio						
Jan	*	990	*	*	*	30,552
Feb	*	837	*	*	*	25,762
Mar	126	806	*	*	*	34,738
Apr	126	*	*	*	*	31,759
May	*	1,165	*	*	*	37,263
Jun	*	*	*	*	*	*
Jul	*	1,224	*	*	*	*
Aug	*	*	*	*	*	24,323
Sep	*	*	*	*	*	26,448
Oct	*	*	*	*	*	27,088
Nov	84	698	*	*	*	*
Dec	89	*	*	*	*	*
Total	1,420	11,826	15,039	539	161,447	401,160
Pennsylvania						
Jan	1,323	6,615	4,130	236	14,467	75,704
Feb	1,315	3,710	3,938	*	25,520	74,074
Mar	1,173	4,160	5,604	*	28,486	89,755
Apr	978	3,624	5,132	214	25,124	74,013
May	1,009	3,401	4,940	*	35,069	81,904
Jun	1,153	3,972	6,726	281	35,870	86,365
Jul	1,318	*	6,897	196	35,012	85,900
Aug	1,470	*	4,366	200	*	78,418
Sep	1,510	4,504	5,190	*	21,969	72,581
Oct	1,179	4,479	4,597	1,030	14,185	70,409
Nov	952	4,792	5,364	*	*	72,038
Dec	1,003	*	6,753	*	12,955	83,308
Total	14,383	53,538	63,637	4,715	290,403	944,469
South Carolina						
Jan	*	4,888	*	*	*	51,916
Feb	609	*	1,292	*	3,559	41,311
Mar	629	*	2,003	*	5,458	49,195
Apr	669	6,534	1,781	*	3,772	44,405
May	709	4,833	1,941	*	5,657	39,996
Jun	702	4,191	2,153	3,158	4,522	40,261
Jul	759	4,686	*	2,873	4,012	42,609
Aug	781	5,733	*	*	3,778	45,866
Sep	743	5,625	2,232	1,762	*	41,825
Oct	625	3,824	2,118	*	3,609	39,546
Nov	568	4,079	2,768	1,184	4,285	34,927
Dec	*	4,646	1,941	1,653	4,687	36,530
Total	7,771	62,041	25,269	25,616	54,173	508,387

See footnote(s) at end of table.

--continued

**Young Chickens Slaughtered: Number Condemned Post-Mortem by Cause,
by Month and Annual Total, by State and United States, 2004 (continued)**

State and Month	Tuber- culosis	Leukosis	Septicemia	Airsac- culitis	Synovitis	Tumors
	<i>Number of Head</i>	<i>Number of Head</i>	<i>Number of Head</i>	<i>Number of Head</i>	<i>Number of Head</i>	<i>Number of Head</i>
Tennessee						
Jan		*	44,960	17,248	156	*
Feb		109	44,059	17,158	291	945
Mar		*	43,768	15,054	186	715
Apr		*	46,181	9,619	135	548
May		148	43,502	8,464	*	434
Jun		*	47,551	9,707	144	376
Jul		*	44,342	*	150	*
Aug		120	49,299	*	162	310
Sep		*	47,675	10,262	122	329
Oct		127	46,115	7,628	*	373
Nov		140	53,433	9,240	73	480
Dec		161	52,791	11,543	125	529
Total		2,635	563,676	136,906	1,811	7,245
Texas						
Jan		*	109,374	*	327	3,261
Feb		*	116,886	*	497	2,878
Mar		74	120,473	91,264	368	2,575
Apr		*	104,795	70,514	*	1,885
May		99	86,457	42,616	*	1,475
Jun		*	86,467	33,895	212	1,547
Jul		*	79,861	*	228	1,361
Aug		*	80,486	29,089	*	1,577
Sep		*	72,508	29,901	*	1,553
Oct		*	85,565	44,706	*	1,790
Nov		154	93,208	50,658	171	1,683
Dec		272	88,219	45,680	105	1,715
Total		2,015	1,124,299	729,212	3,475	23,300
Virginia						
Jan		279	62,354	37,151	24	*
Feb		256	50,367	*	7	*
Mar		238	49,402	24,409	*	*
Apr		*	46,139	18,338	*	*
May		*	42,854	*	8	*
Jun		*	46,789	10,079	13	*
Jul		*	41,225	6,761	*	*
Aug		*	43,190	7,966	*	*
Sep		*	46,500	9,352	17	*
Oct		320	53,938	15,828	*	*
Nov		*	54,434	22,129	25	*
Dec		248	56,944	26,750	*	*
Total		4,432	594,136	225,933	624	40,514

See footnote(s) at end of table.

--continued

**Young Chickens Slaughtered: Number Condemned Post-Mortem by Cause,
by Month and Annual Total, by State and United States, 2004 (continued)**

State and Month	Bruises	Cadaver	Contami- nation	Overscald	Other	Total All Causes
	<i>Number of Head</i>	<i>Number of Head</i>	<i>Number of Head</i>	<i>Number of Head</i>	<i>Number of Head</i>	<i>Number of Head</i>
Tennessee						
Jan	1,068	10,712	*	754	12,359	93,699
Feb	1,203	9,886	4,646	*	*	97,641
Mar	970	8,857	4,403	564	*	87,643
Apr	1,148	7,442	5,073	*	*	96,921
May	1,118	7,751	5,715	*	*	81,988
Jun	1,325	7,195	6,454	2,038	*	96,234
Jul	1,424	9,466	*	*	*	98,807
Aug	1,300	12,099	7,069	*	*	105,469
Sep	1,187	11,055	7,340	*	20,637	100,833
Oct	*	9,357	4,931	1,728	*	94,030
Nov	1,037	9,186	4,904	*	*	104,912
Dec	*	11,734	4,623	*	*	126,664
Total	13,746	114,740	67,473	19,570	257,039	1,184,841
Texas						
Jan	1,100	7,917	8,311	797	15,073	253,096
Feb	881	7,919	7,077	1,950	18,239	311,336
Mar	1,090	8,307	9,583	805	24,519	259,058
Apr	1,103	8,188	8,492	460	16,301	212,116
May	995	6,739	7,587	*	11,348	159,253
Jun	1,324	7,745	7,760	*	11,268	151,580
Jul	1,428	7,009	8,402	1,801	10,316	139,580
Aug	1,354	7,693	8,919	1,103	9,612	140,304
Sep	1,055	6,521	7,828	938	10,569	131,380
Oct	1,100	5,805	7,418	1,171	11,409	159,686
Nov	1,007	7,117	7,823	1,378	15,475	178,674
Dec	811	7,278	7,838	1,615	16,764	170,297
Total	13,248	88,238	97,038	14,642	170,893	2,266,360
Virginia						
Jan	1,768	14,225	*	*	19,784	153,986
Feb	1,356	9,503	*	*	20,441	131,490
Mar	1,553	10,253	8,787	2,325	33,597	134,222
Apr	1,446	9,973	8,376	*	23,267	112,822
May	1,223	11,432	8,348	3,293	13,598	98,194
Jun	1,519	15,159	8,324	*	14,596	105,165
Jul	1,418	11,960	7,465	*	11,736	88,803
Aug	1,380	14,654	7,091	3,167	14,192	95,795
Sep	1,328	10,175	6,033	3,913	14,928	95,491
Oct	1,350	12,711	6,438	5,726	16,594	116,380
Nov	1,299	10,292	5,409	3,111	17,411	118,829
Dec	1,376	9,926	5,536	2,475	19,954	127,498
Total	17,016	140,263	93,558	42,101	220,098	1,378,675

See footnote(s) at end of table.

--continued

**Young Chickens Slaughtered: Number Condemned Post-Mortem by Cause,
by Month and Annual Total, by State and United States, 2004 (continued)**

State and Month	Tuberculosis	Leukosis	Septicemia	Airsacculitis	Synovitis	Tumors
	<i>Number of Head</i>	<i>Number of Head</i>	<i>Number of Head</i>	<i>Number of Head</i>	<i>Number of Head</i>	<i>Number of Head</i>
Other States ¹						
Jan		7,730	220,281	166,514	4,445	26,639
Feb		18,512	185,023	263,517	2,411	20,654
Mar		24,080	211,112	49,076	2,553	22,877
Apr		42,225	193,238	38,822	3,681	22,025
May		32,087	182,550	50,854	7,924	30,892
Jun		23,713	179,401	35,005	7,339	24,601
Jul		9,207	174,369	69,879	9,269	26,542
Aug		2,485	178,982	49,464	9,829	25,718
Sep		9,915	172,557	86,237	11,314	28,406
Oct		8,686	179,710	127,744	10,488	26,820
Nov		4,469	179,874	100,304	6,855	17,930
Dec		28,869	216,499	90,867	3,233	25,122
Total		211,978	2,273,596	1,128,283	79,341	298,226
United States						
Jan		14,285	1,370,278	716,883	11,197	63,638
Feb		21,613	1,257,837	809,106	8,476	50,451
Mar		30,038	1,373,371	689,276	8,846	49,819
Apr		47,042	1,259,949	580,194	9,037	41,089
May		34,254	1,179,455	465,349	9,176	40,707
Jun		26,504	1,229,431	395,389	10,114	39,365
Jul		18,265	1,199,495	365,777	11,191	37,135
Aug		18,153	1,230,927	352,262	12,415	39,082
Sep		15,982	1,235,743	405,631	12,613	42,253
Oct		16,301	1,239,067	483,568	11,570	44,067
Nov		18,077	1,217,430	487,272	9,123	45,665
Dec		33,878	1,334,711	635,012	9,204	46,293
Total		294,392	15,127,694	6,385,719	122,962	539,564

See footnote(s) at end of table.

--continued

**Young Chickens Slaughtered: Number Condemned Post-Mortem by Cause,
by Month and Annual Total, by State and United States, 2004 (continued)**

State and Month	Bruises	Cadaver	Contamination	Overscald	Other	Total All Causes ²
	<i>Number of Head</i>	<i>Number of Head</i>	<i>Number of Head</i>	<i>Number of Head</i>	<i>Number of Head</i>	<i>Number of Head</i>
Other States ¹						
Jan	8,792	21,863	67,353	12,441	47,653	205,285
Feb	6,218	25,257	56,389	10,061	122,987	208,660
Mar	5,030	33,129	46,697	12,499	125,141	227,939
Apr	4,763	10,024	59,846	13,271	113,832	203,954
May	3,967	14,806	41,043	12,062	86,901	182,227
Jun	4,082	15,936	45,025	13,782	98,246	217,104
Jul	5,457	12,345	48,230	15,898	117,316	332,226
Aug	4,488	14,075	38,322	10,855	172,440	356,502
Sep	4,558	14,477	41,016	14,333	99,094	426,302
Oct	5,161	32,031	45,436	15,020	129,487	374,418
Nov	3,331	30,067	43,440	11,973	156,799	492,135
Dec	5,100	21,554	53,902	6,043	191,990	677,643
Total	60,947	245,564	586,699	148,238	1,461,886	3,904,395
United States						
Jan	38,652	261,520	212,583	47,875	633,343	3,370,254
Feb	34,312	236,935	189,002	44,917	844,950	3,497,599
Mar	38,179	227,412	207,557	43,416	877,331	3,545,245
Apr	36,444	201,072	202,393	45,339	726,976	3,149,535
May	34,052	202,879	184,238	66,909	641,086	2,858,105
Jun	37,181	217,978	204,463	67,264	615,893	2,843,582
Jul	37,012	236,086	204,385	54,973	579,045	2,743,364
Aug	37,282	233,166	199,020	59,358	611,725	2,793,390
Sep	35,751	216,435	205,749	58,155	601,793	2,830,105
Oct	33,209	210,567	193,332	49,439	591,200	2,872,320
Nov	29,835	195,785	186,860	43,755	602,497	2,836,299
Dec	31,799	226,322	189,243	41,286	723,082	3,270,830
Total	423,708	2,666,157	2,378,825	622,686	8,048,921	36,610,628

* Included in "Other States" to avoid disclosing individual operations.

¹ Sum of confidential figures replaced by an asterisk (*) in the States listed above.

² The sum of the individual diseases does not add across to "Total All Causes" for Other States.

**Mature Chickens Slaughtered: Number Condemned Post-Mortem by Cause,
by Type, by Month and Annual Total, United States, 2004**

Type and Month	Tuber- culosis	Leukosis	Septicemia	Airsac- culitis	Synovitis	Tumors
	<i>Number of Head</i>	<i>Number of Head</i>	<i>Number of Head</i>	<i>Number of Head</i>	<i>Number of Head</i>	<i>Number of Head</i>
Light						
Jan	4	3,270	236,120	15,593	625	86,203
Feb		2,681	199,251	12,731	141	98,187
Mar		2,583	192,519	12,360	141	82,258
Apr		2,968	201,497	12,734	163	95,324
May		2,756	181,660	14,792	132	88,981
Jun		2,599	179,057	17,726	166	88,774
Jul		2,817	157,797	17,281	165	78,311
Aug		2,328	171,143	20,280	229	70,651
Sep		2,039	157,930	16,563	500	93,642
Oct		1,902	180,628	20,378	202	68,933
Nov		2,966	188,887	20,291	144	77,066
Dec	1	2,822	217,723	21,192	189	87,563
Total	5	31,731	2,264,212	201,921	2,797	1,015,893
Heavy						
Jan		740	62,970	2,738	353	9,386
Feb	258	773	47,307	2,825	266	7,409
Mar		684	61,143	3,529	222	10,953
Apr		870	65,864	3,522	273	9,360
May		605	52,747	3,751	168	7,981
Jun		655	60,024	5,120	141	8,803
Jul		725	60,076	2,778	125	9,026
Aug		814	62,145	2,439	242	9,983
Sep		1,313	54,141	2,427	177	10,347
Oct		1,499	51,615	2,772	126	10,113
Nov		678	48,779	1,767	107	9,062
Dec		3,439	61,792	2,443	85	10,322
Total	258	12,795	688,603	36,111	2,285	112,745
Total Mature						
Jan	4	4,010	299,090	18,331	978	95,589
Feb	258	3,454	246,558	15,556	407	105,596
Mar		3,267	253,662	15,889	363	93,211
Apr		3,838	267,361	16,256	436	104,684
May		3,361	234,407	18,543	300	96,962
Jun		3,254	239,081	22,846	307	97,577
Jul		3,542	217,873	20,059	290	87,337
Aug		3,142	233,288	22,719	471	80,634
Sep		3,352	212,071	18,990	677	103,989
Oct		3,401	232,243	23,150	328	79,046
Nov		3,644	237,666	22,058	251	86,128
Dec	1	6,261	279,515	23,635	274	97,885
Total	263	44,526	2,952,815	238,032	5,082	1,128,638

--continued

**Mature Chickens Slaughtered: Number Condemned Post-Mortem by Cause,
by Type, by Month and Annual Total, United States, 2004 (continued)**

Type and Month	Bruises	Cadaver	Contami- nation	Overscald	Other	Total All Causes
	<i>Number of Head</i>	<i>Number of Head</i>	<i>Number of Head</i>	<i>Number of Head</i>	<i>Number of Head</i>	<i>Number of Head</i>
Light						
Jan	6,918	13,599	121,556	575	65,382	549,845
Feb	4,638	6,804	131,695	956	126,371	583,455
Mar	6,528	9,668	137,748	1,269	79,370	524,444
Apr	6,923	8,332	120,196	1,447	93,058	542,642
May	6,466	7,460	104,679	1,289	90,750	498,965
Jun	6,431	3,829	100,376	2,360	76,054	477,372
Jul	10,315	5,086	97,345	949	71,943	442,009
Aug	7,643	5,412	105,259	1,536	67,023	451,504
Sep	6,547	7,179	98,823	1,640	74,977	459,840
Oct	9,507	5,666	128,560	1,308	72,694	489,778
Nov	7,684	6,411	112,770	577	63,184	479,980
Dec	7,854	6,499	128,530	2,170	67,379	541,922
Total	87,454	85,945	1,387,537	16,076	948,185	6,041,756
Heavy						
Jan	1,689	11,031	22,775	784	63,386	175,852
Feb	1,115	9,580	12,962	976	35,945	119,416
Mar	1,710	14,610	21,540	1,786	75,626	191,803
Apr	1,495	12,475	24,346	824	76,106	195,135
May	1,104	7,569	16,505	2,582	67,852	160,864
Jun	1,519	11,325	24,016	1,516	73,645	186,764
Jul	1,254	9,419	16,727	559	70,950	171,639
Aug	1,511	8,061	19,957	933	83,575	189,660
Sep	1,309	9,417	16,015	1,424	82,066	178,636
Oct	1,406	7,218	17,845	584	95,755	188,933
Nov	1,372	8,151	13,717	623	77,495	161,751
Dec	1,505	13,274	21,444	300	79,189	193,793
Total	16,989	122,130	227,849	12,891	881,590	2,114,246
Total Mature						
Jan	8,607	24,630	144,331	1,359	128,768	725,697
Feb	5,753	16,384	144,657	1,932	162,316	702,871
Mar	8,238	24,278	159,288	3,055	154,996	716,247
Apr	8,418	20,807	144,542	2,271	169,164	737,777
May	7,570	15,029	121,184	3,871	158,602	659,829
Jun	7,950	15,154	124,392	3,876	149,699	664,136
Jul	11,569	14,505	114,072	1,508	142,893	613,648
Aug	9,154	13,473	125,216	2,469	150,598	641,164
Sep	7,856	16,596	114,838	3,064	157,043	638,476
Oct	10,913	12,884	146,405	1,892	168,449	678,711
Nov	9,056	14,562	126,487	1,200	140,679	641,731
Dec	9,359	19,773	149,974	2,470	146,568	735,715
Total	104,443	208,075	1,615,386	28,967	1,829,775	8,156,002

**Young Turkeys (Mature) Slaughtered: Number, Live Weight, Average Live Weight,
Pounds Certified and Post-Mortem Condemnations, by Month
and Annual Total, by State, 2004**

State and Month	Number Slaughtered	Live Weight	Average Live Weight	Total Certified ¹	Post-Mortem Condemnations	
					NY Dressed Weight	Percent ²
	<i>1,000 Head</i>	<i>1,000 Pounds</i>	<i>Pounds</i>	<i>1,000 Pounds</i>	<i>1,000 Pounds</i>	<i>Percent</i>
Arkansas						
Jan	3,186	57,475	18.04	49,098	902	1.74
Feb	2,649	47,024	17.75	39,155	672	1.59
Mar	3,015	55,343	18.35	45,804	766	1.54
Apr	2,964	55,006	18.56	46,189	686	1.39
May	2,693	50,939	18.92	42,557	634	1.38
Jun	2,500	46,791	18.72	39,303	640	1.52
Jul	2,596	48,103	18.53	40,132	611	1.41
Aug	2,711	49,576	18.29	42,436	589	1.32
Sep	2,688	50,180	18.67	42,053	524	1.16
Oct	2,753	53,198	19.32	43,737	1,066	2.23
Nov	3,053	57,136	18.72	46,755	849	1.65
Dec	3,012	55,155	18.31	45,840	575	1.16
Total	33,820	625,926	18.51	523,059	8,514	1.51
California						
Jan	*	*	*	*	*	*
Feb	914	29,020	31.74	22,019	633	2.42
Mar	*	*	*	*	*	*
Apr	1,103	29,783	27.01	24,096	704	2.63
May	*	*	*	*	*	*
Jun	*	*	*	*	*	*
Jul	*	*	*	*	*	*
Aug	1,200	32,276	26.90	26,340	852	2.93
Sep	*	*	*	*	*	*
Oct	1,834	46,008	25.08	37,203	995	2.40
Nov	*	*	*	*	*	*
Dec	1,298	31,613	24.36	26,165	650	2.29
Total	15,111	397,830	26.33	321,952	9,172	2.56

See footnote(s) at end of table.

--continued

**Young Turkeys (Mature) Slaughtered: Number, Live Weight, Average Live Weight,
Pounds Certified and Post-Mortem Condemnations, by Month
and Annual Total, by State, 2004 (continued)**

State and Month	Number Slaughtered	Live Weight	Average Live Weight	Total Certified ¹	Post-Mortem Condemnations	
					NY Dressed Weight	Percent ²
	<i>1,000 Head</i>	<i>1,000 Pounds</i>	<i>Pounds</i>	<i>1,000 Pounds</i>	<i>1,000 Pounds</i>	<i>Percent</i>
Minnesota						
Jan	2,673	77,756	29.09	61,863	1,439	2.06
Feb	2,578	69,877	27.11	55,897	1,343	2.14
Mar	2,920	80,854	27.69	64,765	2,338	3.21
Apr	2,811	76,053	27.05	60,153	1,537	2.25
May	3,006	80,911	26.92	64,431	1,584	2.18
Jun	3,190	84,961	26.63	66,736	1,714	2.24
Jul	3,334	85,663	25.69	67,738	1,510	1.96
Aug	3,726	88,314	23.70	68,780	1,651	2.08
Sep	3,686	87,576	23.76	70,144	1,805	2.29
Oct	3,393	87,140	25.68	70,312	1,511	1.93
Nov	3,440	91,603	26.63	73,286	2,043	2.48
Dec	2,745	77,387	28.20	61,848	1,944	2.79
Total	37,502	988,095	26.35	785,953	20,419	2.30
Missouri						
Jan	1,494	45,996	30.80	35,971	997	2.41
Feb	1,456	49,027	33.66	34,927	976	2.21
Mar	1,551	45,498	29.34	34,787	1,000	2.44
Apr	1,497	46,426	31.01	36,407	1,021	2.44
May	1,502	45,964	30.60	36,338	860	2.08
Jun	1,604	49,479	30.86	39,007	1,023	2.30
Jul	1,580	49,500	31.33	38,159	1,042	2.34
Aug	1,715	52,648	30.70	41,097	993	2.09
Sep	1,555	47,890	30.80	36,831	930	2.16
Oct	1,572	49,280	31.34	38,405	967	2.18
Nov	1,458	44,884	30.78	35,621	849	2.10
Dec	1,460	46,725	32.00	36,602	848	2.02
Total	18,444	573,317	31.08	444,152	11,506	2.23
North Carolina						
Jan	2,982	80,222	26.90	64,002	904	1.25
Feb	2,703	75,466	27.92	56,729	835	1.23
Mar	3,359	88,282	26.28	68,664	1,069	1.34
Apr	3,097	88,097	28.44	68,946	1,178	1.49
May	3,025	86,193	28.49	68,644	1,113	1.43
Jun	3,254	90,060	27.68	71,293	1,256	1.55
Jul	3,285	84,796	25.82	68,639	1,259	1.65
Aug	3,419	88,764	25.96	69,963	2,070	2.59
Sep	3,285	89,341	27.20	71,870	1,277	1.59
Oct	3,204	87,297	27.24	70,270	957	1.22
Nov	*	*	*	*	*	*
Dec	*	*	*	*	*	*
Total	37,177	1,020,256	27.44	808,792	13,407	1.46

See footnote(s) at end of table.

--continued

**Young Turkeys (Mature) Slaughtered: Number, Live Weight, Average Live Weight,
Pounds Certified and Post-Mortem Condemnations, by Month
and Annual Total, by State, 2004 (continued)**

State and Month	Number Slaughtered	Live Weight	Average Live Weight	Total Certified ¹	Post-Mortem Condemnations	
					NY Dressed Weight	Percent ²
	<i>1,000 Head</i>	<i>1,000 Pounds</i>	<i>Pounds</i>	<i>1,000 Pounds</i>	<i>1,000 Pounds</i>	<i>Percent</i>
Other States ³						
Jan	9,611	287,687	29.93	224,553	5,195	2.01
Feb	8,035	241,405	30.04	187,049	4,736	2.18
Mar	10,934	320,974	29.36	252,530	6,306	2.18
Apr	8,993	266,484	29.63	209,361	4,648	1.94
May	10,008	294,670	29.44	233,349	5,142	1.94
Jun	10,736	314,082	29.26	246,821	5,476	1.94
Jul	10,954	311,450	28.43	241,772	5,635	2.01
Aug	9,565	275,837	28.84	215,114	4,570	1.84
Sep	10,104	292,192	28.92	230,923	5,684	2.16
Oct	8,769	258,369	29.46	201,608	4,182	1.80
Nov	15,000	410,982	27.40	323,955	5,966	1.61
Dec	11,126	333,484	29.97	263,989	4,985	1.66
Total	123,835	3,607,616	29.13	2,831,024	62,525	1.93

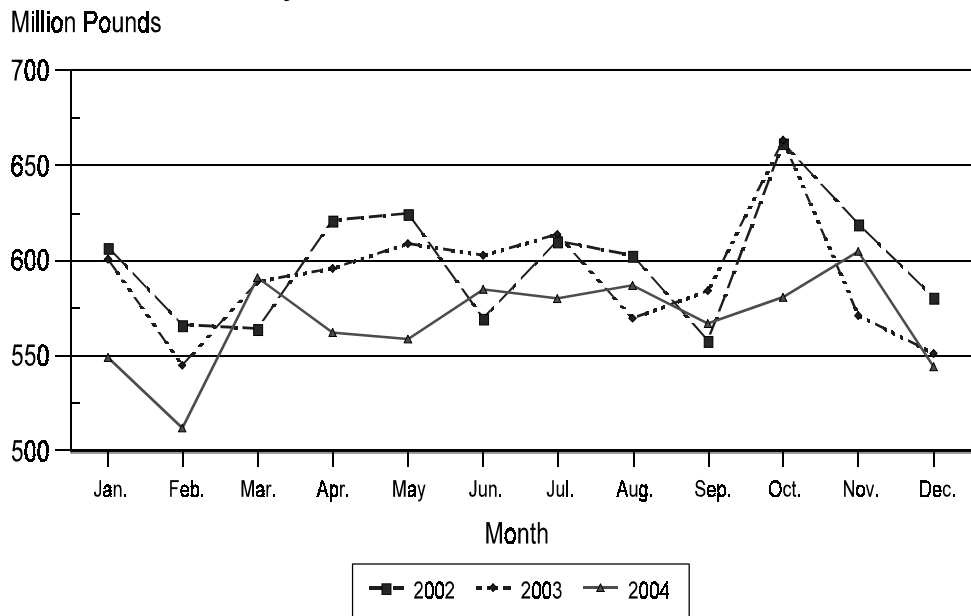
* Included in "Other States" to avoid disclosing individual operations.

¹ Ready-to-cook weights.

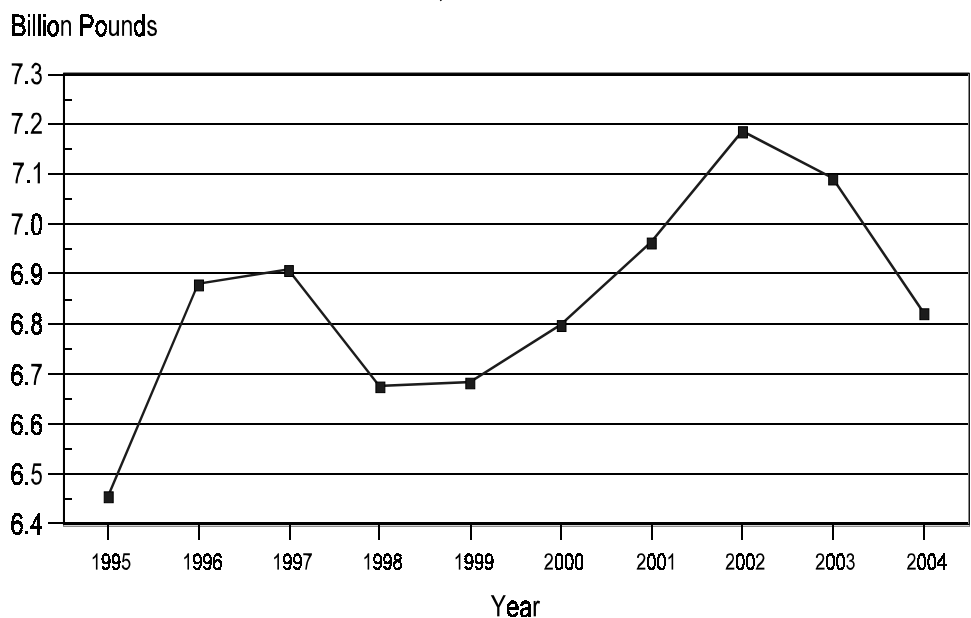
² Pounds condemned as a percent of equivalent N.Y. dressed weight of quantity inspected.

³ Sum of confidential figures replaced by an asterisk (*) in the States listed above.

Total Live Weight of Young Turkeys Slaughtered Under Federal Inspection, by Month, U.S., 2002-2004



Total Live Weight of Young Turkeys Slaughtered Under Federal Inspection, U.S., 1995-2004



**Young Turkeys (Mature) Slaughtered: Number Condemned Post-Mortem by Cause,
by Month and Annual Total, by State and United States, 2004**

State and Month	Tuber- culosis	Leukosis	Septicemia	Airsac- culitis	Synovitis	Tumors
	<i>Number of Head</i>	<i>Number of Head</i>	<i>Number of Head</i>	<i>Number of Head</i>	<i>Number of Head</i>	<i>Number of Head</i>
Arkansas						
Jan		*	12,287	*	20	*
Feb		*	*	926	16	*
Mar		2	6,551	*	*	*
Apr			5,428	*	*	*
May		*	5,077	*	19	11
Jun			4,615	*	*	*
Jul		*	*	*	*	2
Aug		*	4,230	511	25	10
Sep			4,297	637	30	*
Oct			5,586	730	40	7
Nov			7,175	*	35	*
Dec		*	6,504	669	*	9
Total		10	72,295	9,400	406	81
California						
Jan		*	4,696	*		*
Feb		*	*	*	*	9
Mar		*	*	41	*	*
Apr		*	6,758	55	*	*
May		5	5,084	*	*	*
Jun		*	6,829	*	*	*
Jul		*	5,496	*	7	*
Aug		*	6,140	226	*	*
Sep		*	*	*	*	*
Oct		*	*	*	*	*
Nov		*	7,212	484	*	4
Dec		*	4,545	*		*
Total		158	72,218	2,426	178	238
Iowa						
Jan			*	2,000	*	*
Feb			*	*	*	*
Mar			4,625	1,722	*	*
Apr			4,558	1,208	*	*
May			3,613	*	*	*
Jun			*	*	*	2
Jul			4,456	1,227	*	*
Aug			4,074	726	*	*
Sep			3,917	541	*	*
Oct			5,005	522	*	*
Nov			4,927	*	*	*
Dec			5,745	1,101	*	*
Total			57,687	14,951	22,129	18

See footnote(s) at end of table.

--continued

**Young Turkeys (Mature) Slaughtered: Number Condemned Post-Mortem by Cause,
by Month and Annual Total, by State and United States, 2004 (continued)**

State and Month	Bruises	Cadaver	Contami- nation	Overscald	Other	Total All Causes
	<i>Number of Head</i>	<i>Number of Head</i>	<i>Number of Head</i>	<i>Number of Head</i>	<i>Number of Head</i>	<i>Number of Head</i>
Arkansas						
Jan	*	1,032	*	586	*	18,691
Feb	*	694	*	*	1,374	*
Mar	*	626	*	*	1,480	11,047
Apr	*	796	*	*	1,034	*
May	*	568	*	*	779	*
Jun	*	*	*	*	1,218	*
Jul	32	605	*	*	1,232	*
Aug	24	913	*	*	1,407	8,579
Sep	15	649	*	*	*	10,078
Oct	*	*	*	*	*	13,194
Nov	*	*	*	*	*	15,243
Dec	*	1,170	*	*	2,487	*
Total	469	9,923	20,657	2,172	22,882	138,295
California						
Jan	34	*	*	*	*	5,937
Feb	*	*	*	231	*	*
Mar	50	*	*	224	*	*
Apr	55	*	*	*	*	7,603
May	*	*	*	*	*	6,246
Jun	*	191	137	*	331	8,064
Jul	15	*	78	*	590	6,918
Aug	*	207	117	6	*	8,081
Sep	22	240	*	*	*	*
Oct	*	535	224	*	1,157	11,087
Nov	*	709	170	25	1,188	9,857
Dec	*	184	116	*	*	6,086
Total	445	3,227	1,967	2,210	9,116	92,183
Iowa						
Jan	*	*	*	*	*	11,731
Feb	73	433	*	*	*	*
Mar	74	481	467	*	299	9,536
Apr	98	581	*	*	187	8,718
May	*	358	306	*	527	*
Jun	39	*	311	*	488	*
Jul	*	270	*	*	443	8,842
Aug	38	183	*	*	239	*
Sep	*	161	337	*	*	*
Oct	56	232	236	*	*	*
Nov	*	188	*	*	150	*
Dec	83	*	*	*	113	10,383
Total	684	3,950	4,913	2,318	3,456	110,106

See footnote(s) at end of table.

--continued

**Young Turkeys (Mature) Slaughtered: Number Condemned Post-Mortem by Cause,
by Month and Annual Total, by State and United States, 2004 (continued)**

State and Month	Tuber- culosis	Leukosis	Septicemia	Airsac- culitis	Synovitis	Tumors
	<i>Number of Head</i>	<i>Number of Head</i>	<i>Number of Head</i>	<i>Number of Head</i>	<i>Number of Head</i>	<i>Number of Head</i>
Minnesota						
Jan		*	16,807	*	*	20
Feb		*	17,234	2,286	*	*
Mar		*	19,749	*	*	*
Apr		*	17,845	2,170	*	9
May		*	15,627	*	*	*
Jun		*	16,614	*	899	*
Jul		*	15,235	*	*	*
Aug		*	19,613	*	1,153	*
Sep		*	19,005	*	*	*
Oct		*	20,493	*	*	*
Nov		*	24,358	*	975	*
Dec		*	21,768	*	*	4
Total		395	224,348	24,470	10,326	274
Missouri						
Jan			*	*		
Feb			10,127	*	*	*
Mar		*	11,247	*	*	
Apr			11,409	*		
May			*	*		*
Jun			9,242	*		*
Jul			9,100	*		
Aug			9,796	*		
Sep			11,664	*		*
Oct		*	10,309	*		*
Nov			10,953	*		*
Dec			9,405	*		*
Total		3	123,240	9,833	3	19
North Carolina						
Jan		*	*	*	*	*
Feb			*	*	*	*
Mar			*	*		*
Apr		*	*	*		*
May		*	*	*		2
Jun		*	*	*	4	4
Jul			*	*		
Aug			*	*		*
Sep			*	*		4
Oct		*	3,988	*		*
Nov		*	3,543	*		*
Dec		*	*	*		*
Total		10	41,172	10,312	17	43

See footnote(s) at end of table.

--continued

**Young Turkeys (Mature) Slaughtered: Number Condemned Post-Mortem by Cause,
by Month and Annual Total, by State and United States, 2004 (continued)**

State and Month	Bruises	Cadaver	Contami- nation	Overscald	Other	Total All Causes
	<i>Number of Head</i>	<i>Number of Head</i>	<i>Number of Head</i>	<i>Number of Head</i>	<i>Number of Head</i>	<i>Number of Head</i>
Minnesota						
Jan	*	*	436	*	*	22,490
Feb	*	*	529	*	2,259	23,675
Mar	*	652	595	*	1,749	28,356
Apr	*	*	668	*	2,397	24,681
May	144	*	682	100	*	23,038
Jun	92	544	740	*	2,992	23,760
Jul	88	425	601	*	2,703	21,925
Aug	*	557	564	41	3,166	27,216
Sep	88	641	547	*	2,937	25,983
Oct	*	494	610	*	2,462	27,166
Nov	137	568	623	*	2,275	31,610
Dec	*	395	440	*	1,985	27,102
Total	1,047	6,804	7,035	2,396	29,907	307,002
Missouri						
Jan	*	422	326	*	*	16,570
Feb	*	*	369	*	*	13,491
Mar	*	*	302	*	*	14,696
Apr	63	*	249	*	*	14,897
May	*	*	245	*	*	9,928
Jun	*	*	199	*	*	12,347
Jul	*	*	*	*	*	12,616
Aug	*	*	*	*	1,669	13,032
Sep	*	*	*	*	*	18,112
Oct	*	*	*	*	*	17,382
Nov	*	*	*	*	*	17,773
Dec	*	120	236	*	*	11,351
Total	444	4,939	2,982	592	30,140	172,195
North Carolina						
Jan	*	*	440	*	*	6,435
Feb	*	*	376	184	*	9,057
Mar	83	1,172	513	274	1,703	7,869
Apr	104	937	507	*	1,429	7,571
May	38	*	*	157	1,408	7,066
Jun	35	*	476	*	2,913	8,835
Jul	20	*	450	*	2,344	8,589
Aug	*	*	552	*	1,723	9,870
Sep	42	*	644	*	1,835	9,402
Oct	83	*	801	74	1,401	8,805
Nov	51	896	568	*	1,590	7,432
Dec	49	579	*	537	1,838	5,904
Total	699	14,020	6,073	2,589	21,900	96,835

See footnote(s) at end of table.

--continued

**Young Turkeys (Mature) Slaughtered: Number Condemned Post-Mortem by Cause,
by Month and Annual Total, by State and United States, 2004 (continued)**

State and Month	Tuber- culosis	Leukosis	Septicemia	Airsac- culitis	Synovitis	Tumors
	<i>Number of Head</i>	<i>Number of Head</i>	<i>Number of Head</i>	<i>Number of Head</i>	<i>Number of Head</i>	<i>Number of Head</i>
Ohio						
Jan		*	*	*	*	*
Feb		*	*	*	*	*
Mar		*	*	*	*	*
Apr		*	*	*	*	*
May		*	*	*	*	*
Jun		*	*	*	*	*
Jul		*	*	*	*	*
Aug		*	*	*	*	*
Sep		*	*	*	*	*
Oct		*	*	68	*	*
Nov		*	*	*	*	*
Dec		2	*	*	*	*
Total		19	16,384	1,125	541	15
Pennsylvania						
Jan		*	*	*	4	*
Feb		*	*	382	*	2
Mar		*	*	*	*	*
Apr			*	211	*	*
May			*	288		7
Jun			*	*	*	6
Jul		*	*	*	*	*
Aug		*	*	*	*	*
Sep			*	*	*	*
Oct		*	*	419	*	*
Nov		*	*	*	*	*
Dec		*	*	1,124	*	*
Total		53	49,678	7,854	67	44

See footnote(s) at end of table.

--continued

**Young Turkeys (Mature) Slaughtered: Number Condemned Post-Mortem by Cause,
by Month and Annual Total, by State and United States, 2004 (continued)**

State and Month	Bruises	Cadaver	Contami- nation	Overscald	Other	Total All Causes
	<i>Number of Head</i>	<i>Number of Head</i>	<i>Number of Head</i>	<i>Number of Head</i>	<i>Number of Head</i>	<i>Number of Head</i>
Ohio						
Jan	*	*	*	*	*	*
Feb	*	*	*	*	*	*
Mar	*	*	*	*	*	*
Apr	*	*	*	*	*	*
May	*	*	*	*	*	*
Jun	*	*	*	*	*	*
Jul	*	*	*	*	*	*
Aug	*	*	*	*	*	*
Sep	*	*	*	*	*	*
Oct	*	*	*	*	*	*
Nov	*	131	54	*	*	*
Dec	7	*	10	*	*	*
Total	102	1,391	308	2,835	3,740	26,460
Pennsylvania						
Jan	233	*	229	*	*	13,403
Feb	*	*	*		894	*
Mar	*	*	*	*	*	*
Apr	*	*	*	*	1,618	*
May	*	*	*	11	2,016	*
Jun	151	*	*	*	2,216	*
Jul	*	*	*	*	*	*
Aug	79	*	*	*	*	*
Sep	*	*	*		*	*
Oct	*	*	140	*	1,374	*
Nov	139	*	223	17	1,896	*
Dec	128	*	206	*	*	*
Total	1,511	8,342	1,695	409	23,047	92,700

See footnote(s) at end of table.

--continued

**Young Turkeys (Mature) Slaughtered: Number Condemned Post-Mortem by Cause,
by Month and Annual Total, by State and United States, 2004 (continued)**

State and Month	Tuber- culosis	Leukosis	Septicemia	Airsac- culitis	Synovitis	Tumors
	<i>Number of Head</i>	<i>Number of Head</i>	<i>Number of Head</i>	<i>Number of Head</i>	<i>Number of Head</i>	<i>Number of Head</i>
Other States ¹						
Jan		328	52,870	12,326	4,132	68
Feb		42	46,790	12,332	3,747	78
Mar		33	37,140	14,361	4,797	82
Apr		41	26,729	4,765	4,384	46
May		26	32,659	5,530	3,306	76
Jun		56	30,741	7,479	3,468	32
Jul		35	35,221	5,738	3,950	78
Aug		28	27,830	6,374	3,590	173
Sep		30	31,149	6,211	3,914	171
Oct		22	29,868	5,431	4,418	90
Nov		28	28,639	8,196	3,048	66
Dec		48	28,938	4,476	4,437	29
Total		717	408,574	93,219	47,191	989
United States						
Jan		328	86,660	14,326	4,156	88
Feb		42	74,151	15,926	3,763	89
Mar		35	79,312	16,124	4,797	82
Apr		41	72,727	8,409	4,384	55
May		31	62,060	5,818	3,325	96
Jun		56	68,041	7,479	4,371	44
Jul		35	69,508	6,965	3,957	80
Aug		28	71,683	7,837	4,768	183
Sep		30	70,032	7,389	3,944	175
Oct		22	75,249	7,170	4,458	97
Nov		28	86,807	8,680	4,058	70
Dec		50	76,905	7,370	4,437	42
Total		726	893,135	113,493	50,418	1,101

See footnote(s) at end of table.

--continued

**Young Turkeys (Mature) Slaughtered: Number Condemned Post-Mortem by Cause,
by Month and Annual Total, by State and United States, 2004 (continued)**

State and Month	Bruises	Cadaver	Contami- nation	Overscald	Other	Total All Causes ²
	<i>Number of Head</i>	<i>Number of Head</i>	<i>Number of Head</i>	<i>Number of Head</i>	<i>Number of Head</i>	<i>Number of Head</i>
Other States ¹						
Jan	455	7,434	4,098	1,489	10,865	38,380
Feb	819	5,693	3,647	1,982	9,447	76,752
Mar	564	3,104	2,692	682	8,915	55,547
Apr	476	3,187	3,216	1,668	5,264	46,680
May	401	4,436	2,939	1,348	8,390	49,905
Jun	240	5,841	2,459	1,471	5,148	55,217
Jul	309	5,311	3,194	2,695	11,181	54,241
Aug	347	4,749	3,008	778	8,870	46,958
Sep	290	3,274	2,943	1,620	22,539	56,819
Oct	514	3,830	3,190	2,218	17,386	46,379
Nov	343	2,901	3,829	1,671	17,403	55,473
Dec	378	2,305	3,689	1,731	12,267	59,031
Total	5,136	52,065	38,904	19,353	137,675	641,382
United States						
Jan	722	8,888	5,529	2,075	10,865	133,637
Feb	892	6,820	4,921	2,397	13,974	122,975
Mar	771	6,035	4,569	1,180	14,146	127,051
Apr	796	5,501	4,640	1,668	11,929	110,150
May	583	5,362	4,172	1,616	13,120	96,183
Jun	557	6,576	4,322	1,471	15,306	108,223
Jul	464	6,611	4,323	2,695	18,493	113,131
Aug	488	6,609	4,241	825	17,074	113,736
Sep	457	4,965	4,471	1,620	27,311	120,394
Oct	653	5,091	5,201	2,292	23,780	124,013
Nov	670	5,393	5,467	1,713	24,502	137,388
Dec	645	4,753	4,697	2,268	18,690	119,857
Total	7,698	72,604	56,553	21,820	209,190	1,426,738

* Included in "Other States" to avoid disclosing individual operations.

¹ Sum of confidential figures replaced by an asterisk (*) in the States listed above.

² The sum of the individual diseases does not add across to "Total All Causes" for Other States.

**Old Turkeys (Breeders) Slaughtered: Number Condemned Post-Mortem
by Cause, by Month and Annual Total, United States, 2004**

Month	Tuber- culosis	Leukosis	Septicemia	Airsac- culitis	Synovitis	Tumors
	<i>Number of Head</i>	<i>Number of Head</i>	<i>Number of Head</i>	<i>Number of Head</i>	<i>Number of Head</i>	<i>Number of Head</i>
Jan		43	2,920	427	23	232
Feb			3,626	351	23	89
Mar		1	8,287	486	28	84
Apr		1	5,776	835	18	94
May		2	7,727	581	23	91
Jun		6	4,919	639	32	206
Jul		1	4,917	733	20	175
Aug		7	3,801	727	18	144
Sep		21	4,097	831	12	139
Oct		4	2,744	455	15	137
Nov		2	3,814	611	6	70
Dec		6	4,287	904	12	166
Total		94	56,915	7,580	230	1,627

--continued

**Old Turkeys (Breeders) Slaughtered: Number Condemned Post-Mortem
by Cause, by Month and Annual Total, United States, 2004 (continued)**

Month	Bruises	Cadaver	Contami- nation	Overscald	Other	Total All Causes
	<i>Number of Head</i>	<i>Number of Head</i>	<i>Number of Head</i>	<i>Number of Head</i>	<i>Number of Head</i>	<i>Number of Head</i>
Jan	26	341	147	4	310	4,473
Feb	8	42	81	2	680	4,902
Mar	32	159	162	25	2,159	11,423
Apr	6	161	361	17	4,002	11,271
May	8	106	194	12	6,992	15,736
Jun	19	156	109	1	3,006	9,093
Jul	25	152	103	1	3,548	9,675
Aug	22	313	132	11	1,012	6,187
Sep	19	217	164	4	3,174	8,678
Oct	21	64	101	3	973	4,517
Nov	18	41	144	1	2,909	7,616
Dec	21	81	218	1	2,212	7,908
Total	225	1,833	1,916	82	30,977	101,479

Poultry Slaughter Estimates

Data Sources: Data for poultry slaughter estimates are obtained by inspectors of the Food Safety and Inspection Service (FSIS), USDA, for all Federally Inspected (FI) plants. Over 99 percent of the total U.S. slaughter for the major species is under FI. The number of head slaughtered daily, by species and class, as well as condemnations and total live and dressed weights are obtained by shift for each plant. Approximately 325 plants killed poultry under Federal inspection in 2004.

Revision Policy: The data in this report reflect any late reports received by FSIS or corrections which occurred after the monthly revisions were published. They are considered to be final and are not open to revision in the future.

Procedures and Reliability: Plant inspectors submit data electronically for each shift a plant operates. An edit provides checks for the detection of errors such as invalid plant information, duplication, and erroneous data. In addition, data are compared with historical data levels and averages for each plant.

Data for major slaughter plants with missing reports are adjusted to assure that all plants slaughtering a significant portion of a specific class are accounted for each week. Estimates for missing weeks are made only after verifying that the plant was in operation. Adjustments are based on either the previous week's information or a week determined to be similar to the one missing. Late reports replace imputed data as they become available. While there is a varying degree of incompleteness from month to month, it has only a minimal impact on the published totals.

Data are summarized weekly and accumulated to monthly totals. When a week extends into the following month, the reported data are allocated to the appropriate month.

Poultry slaughter estimates are based on a census of operating plants and, therefore, have no sampling error. However, they may be subject to errors such as omissions, duplications, and mistakes in reporting, recording, and processing the data. These errors are minimized through strict quality controls in the edit and summarization process, and a careful review of all reported data for consistency and reasonableness.

State data are published for selected states for young chicken and young turkeys. State data are not published if less than three plants operate for a species in a State, or if one plant has 60 percent or more of the total live weight for that species. Data for states not published are included in the "Other States" category. Also included in this category are data for published states that are confidential (denoted by an *). Data for all states are included in the U.S. totals. For 2004, young chickens were killed in 34 states, young turkeys in 22 states.

Definitions

Ante-Mortem Condemnations - Birds condemned prior to their entry into the slaughter plant.

Certified Ready-to-Cook - The weight of poultry certified wholesome by inspection after post-mortem condemnation pounds are removed. Ready-to-cook represents poultry meat ready for the marketing channel.

Ducks - Includes all ducks regardless of age and weight.

Fryer-Roaster Turkeys - Young immature birds, usually under 16 weeks of age. These are included with young turkeys as their numbers are too low to publish separately.

Mature Chickens - Fowl from breeder and market egg flocks and stags and cocks.

New York Dressed Weight - Carcass weight after only feathers and blood are removed. This weight is approximately 90% of live weight.

Old Turkeys (Breeders) - Fully matured birds held for egg production, usually over 15 months of age.

Other Poultry - Includes all other ready-to-cook products which bear the USDA Inspected for Wholesomeness legend.

Post-Mortem Condemnations - Carcasses or parts condemned by the inspector because of disease or mishandling and removed from the slaughter line and destroyed.

Young Chickens - Commercially grown broilers-fryers and other young immature birds such as roasters and capons.

Young Turkeys (Mature) - Young birds grown to a matured market age, about 5 months. Includes fryer roasters.

Released February 28, 2005, by the National Agricultural Statistics Service (NASS), Agricultural Statistics Board, U.S. Department of Agriculture. For information on *Poultry Slaughter 2004 Annual Summary* call John Lange at (202) 720-0585, office hours 7:00 a.m. to 4:30 p.m. ET.

ACCESS TO REPORTS!!

For your convenience, there are several ways to obtain NASS reports, data products, and services:

INTERNET ACCESS

All NASS reports are available free of charge on the worldwide Internet. For access, connect to the Internet and go to the NASS Home Page at: www.usda.gov/nass/. Select "Today's Reports" or Publications and then Reports Calendar or Publications and then Search, by Title or Subject.

E-MAIL SUBSCRIPTION

All NASS reports are available by subscription free of charge direct to your e-mail address. Starting with the NASS Home Page at www.usda.gov/nass/, click on **Publications**, then click on the **Subscribe by E-mail** button which takes you to the page describing e-mail delivery of reports. Finally, click on **Go to the Subscription Page** and follow the instructions.

PRINTED REPORTS OR DATA PRODUCTS

CALL OUR TOLL-FREE ORDER DESK: 800-999-6779 (U.S. and Canada)
Other areas, please call 703-605-6220 FAX: 703-605-6900
(Visa, MasterCard, check, or money order acceptable for payment.)

ASSISTANCE

For **assistance** with general agricultural statistics or further information about NASS or its products or services, contact the **Agricultural Statistics Hotline** at **800-727-9540**, 7:30 a.m. to 4:00 p.m. ET, or e-mail: nass@nass.usda.gov.

The United States Department of Agriculture (USDA) prohibits discrimination in all its programs on the basis of race, color, national origin, gender, religion, age, disability, political beliefs, sexual orientation, and marital or family status. (Not all prohibited bases apply to all programs.) Persons with disabilities who require alternative means for communication of program information (braille, large print, audiotape, etc.) should contact the USDA's TARGET Center at 202-720-2600 (voice and TDD).

To file a complaint of discrimination, write USDA, Director, Office of Civil Rights, Room 326-W, Whitten Building, 1400 Independence Avenue, SW, Washington, D.C., 20250-9410, or call 202-720-5964 (voice or TDD). USDA is an equal opportunity provider and employer.