



# North American Potatoes

ISSN: 2159-743X

Released January 23, 2013, by the National Agricultural Statistics Service (NASS), Agricultural Statistics Board, United States Department of Agriculture (USDA).

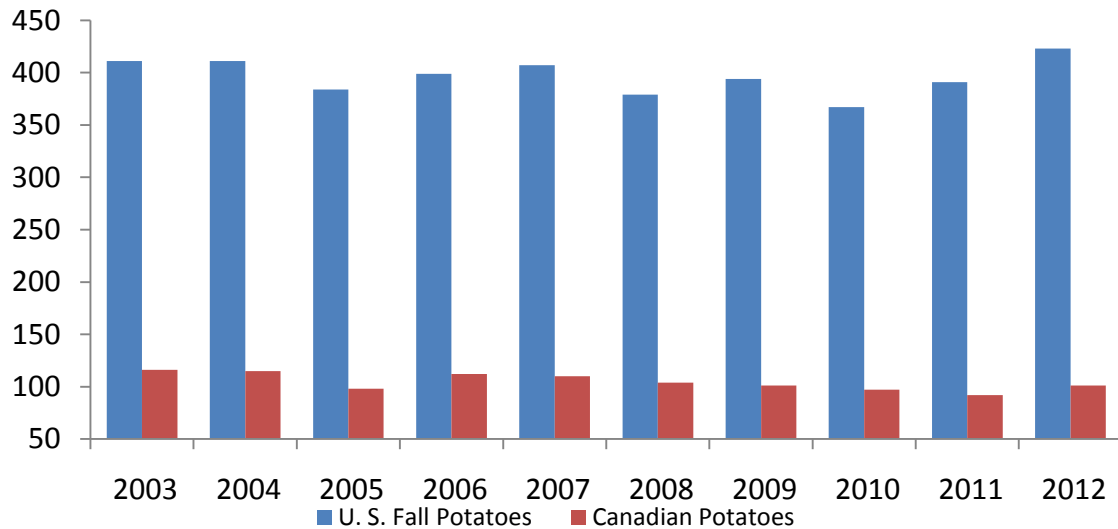
## Combined United States Fall Potato and Canadian Potato Production Up 8 Percent From 2011

This publication is the result of a joint effort by Statistics Canada and USDA's National Agricultural Statistics Service (NASS) to publish potato production for both countries in one report. United States 2012 fall potato production was released January 11, 2013 and Canadian production was released January 18, 2013.

The 2012 fall potato production for the United States and Canada combined is estimated at 524 million cwt, up 8 percent from 2011. The United States fall potato production is estimated at 423 million cwt, 8 percent above 2011. Canada's potato growers harvested 101 million cwt, up 10 percent from 2011.

## Potato Production - United States and Canada

Production (Million cwt)



## Fall Potato Area Planted, Harvested, Yield, Total Production, Utilized Production, Price, and Farm Value - United States: 2003-2012

[Blank cells indicate estimation period has not yet begun]

Crop year	Area		Yield per acre	Total production	Utilized production <sup>1</sup>	Price per cwt	Value of sales <sup>2</sup>
	Planted	Harvested					
	(1,000 acres)	(1,000 acres)	(cwt)	(1,000 cwt)	(1,000 cwt)	(dollars)	(1,000 dollars)
2003 .....	1,107.0	1,091.9	376	410,973	377,364	5.22	1,942,160
2004 .....	1,040.7	1,023.3	401	410,683	374,730	5.12	1,880,920
2005 .....	969.7	951.0	403	383,563	356,378	6.53	2,297,647
2006 .....	995.7	984.0	406	399,176	370,797	6.67	2,448,546
2007 .....	1,007.8	993.2	410	406,800	378,518	7.04	2,636,885
2008 .....	931.1	922.0	411	378,588	353,635	8.49	2,967,871
2009 .....	936.7	917.2	429	393,544	365,559	7.62	2,751,550
2010 .....	894.3	881.8	416	366,505	343,116	8.79	2,981,528
2011 .....	957.7	939.5	416	391,180	364,489	8.87	3,197,096
2012 .....	1,001.7	989.6	427	422,535			

<sup>1</sup> Includes potatoes sold and used on farm where grown for human consumption, seed, and livestock feed.

<sup>2</sup> Includes value of potatoes sold.

Source: National Agricultural Statistics Service.

## Potato Area Planted, Harvested, Yield, Total Production, Utilized Production, Price, and Farm Value - Canada: 2003-2012

[Blank cells indicate estimation period has not yet begun]

Crop year	Area		Yield per acre	Total production	Utilized production <sup>1</sup>	Price per cwt <sup>2</sup>	Farm value <sup>2,3</sup>
	Planted	Harvested					
	(1,000 acres)	(1,000 acres)	(cwt)	(1,000 cwt)	(1,000 cwt)	(dollars)	(1,000 dollars)
2003 .....	457.5	447.0	260.5	116,458	110,441	5.97	659,281
2004 .....	433.2	424.4	272.0	115,431	108,868	6.16	670,122
2005 .....	405.3	386.2	253.1	97,754	95,192	8.60	818,953
2006 .....	401.9	391.0	287.1	112,241	107,926	7.64	824,897
2007 .....	399.2	395.2	278.3	109,982	106,510	9.00	958,170
2008 .....	379.9	373.4	277.3	103,560	99,950	10.13	1,012,381
2009 .....	369.9	359.7	280.4	100,859	96,812	10.78	1,043,196
2010 .....	357.0	344.0	282.4	97,153	93,355	11.68	1,090,680
2011 .....	360.5	348.8	264.8	92,372	89,085	12.10	1,078,193
2012 .....	373.4	367.4	275.4	101,197			

<sup>1</sup> Includes potatoes sold and used on farm where grown for human consumption, seed, and livestock feed.

<sup>2</sup> Converted to United States dollars.

<sup>3</sup> Includes value of potatoes sold and used on farm where grown for human consumption, seed, and livestock feed.

Source: Agriculture Division, Statistics Canada

## Potato Area Planted, Harvested, Yield, Total Production, Utilized Production, Price, and Farm Value - United States and Canada: 2003-2012

[Fall potatoes only for the United States and all potatoes for Canada. Blank cells indicate estimation period has not yet begun]

Crop year	Area		Yield per acre	Total production	Utilized production <sup>1</sup>	Price per acre <sup>2</sup>	Value <sup>2 3</sup>
	Planted	Harvested					
	(1,000 acres)	(1,000 acres)	(cwt)	(1,000 cwt)	(1,000 cwt)	(dollars)	(1,000 dollars)
2003 .....	1,564.5	1,538.9	342.7	527,431	487,805	5.33	2,601,441
2004 .....	1,473.9	1,447.7	363.4	526,114	483,598	5.28	2,551,042
2005 .....	1,375.0	1,337.2	359.9	481,317	451,570	6.90	3,116,600
2006 .....	1,397.6	1,375.0	371.9	511,417	478,723	6.84	3,273,443
2007 .....	1,407.0	1,388.4	372.2	516,782	485,028	7.41	3,595,055
2008 .....	1,311.0	1,295.4	372.2	482,148	453,585	8.78	3,980,252
2009 .....	1,306.6	1,276.9	387.2	494,403	462,371	8.21	3,794,746
2010 .....	1,251.3	1,225.8	378.2	463,658	436,471	9.33	4,072,208
2011 .....	1,318.2	1,288.3	375.3	483,552	453,574	9.43	4,275,289
2012 .....	1,375.1	1,357.0	385.9	523,732			

<sup>1</sup> Includes potatoes sold and used on farm where grown for human consumption, seed, and livestock feed.

<sup>2</sup> Converted to United States dollars.

<sup>3</sup> Includes value of potatoes sold for the United States and value of potatoes sold and used on farm where grown for human consumption, seed, and livestock feed for Canada.

Source: National Agricultural Statistics Service and Agriculture Division, Statistics Canada

## Potato Area Planted and Harvested, Yield, Total Production, Utilized Production, Price, and Farm Value by Season - United States: 2011-2012

[Blank cells indicate estimation period has not yet begun]

Crop year and season	Area		Yield per acre	Total production	Utilized production <sup>1</sup>	Price per cwt	Value of sales <sup>2</sup>
	Planted	Harvested					
	(1,000 acres)	(1,000 acres)	(cwt)	(1,000 cwt)	(1,000 cwt)	(dollars)	(1,000 dollars)
2011							
Spring .....	93.3	91.5	279	25,573	24,876	15.89	391,321
Summer .....	48.2	46.0	280	12,894	12,527	12.37	154,594
Fall .....	957.7	939.5	416	391,180	364,489	8.87	3,197,096
United States .....	1,099.2	1,077.0	399	429,647	401,892	9.41	3,743,011
2012							
Spring .....	96.8	94.6	283	26,736			
Summer .....	49.8	48.5	368	17,855			
Fall .....	1,001.7	989.6	427	422,535			
United States .....	1,148.3	1,132.7	412	467,126			

<sup>1</sup> Includes potatoes sold and used on farm where grown for human consumption, seed, and livestock feed.

<sup>2</sup> Includes value of potatoes sold.

Source: National Agricultural Statistics Service.

## Statistical Methodology

**Survey Procedures:** Potato estimates are the results of a variety of surveys. Fall potatoes are included in the June and December Quarterly Agricultural Surveys, but also follow Grower Special Surveys. Telephone follow-up of mail survey non-respondents is used to ensure adequate coverage. Special grower disposition surveys are conducted at the end of each season to provide additional details about the crop.

**Estimating Procedures:** Information obtained from the special grower disposition surveys along with federal administrative data is used to establish estimates of acreage, production, and amount sold. These estimates are reviewed for errors, reasonableness, and consistency with historical estimates.

**Revision Policy:** All United States estimates in this report for the current year were carried forward from the latest forecast. End-of-season estimates of production are made following harvest and are subject to revision the following year based on a thorough review of all available data.

**Reliability:** Survey results are subject to non-sampling errors such as omission, duplication, imputation for missing data, and mistakes in reporting, recording, and processing the data. These errors cannot be measured directly, but they are minimized through rigid quality controls in the data collection process and a careful review of all reported data for consistency and reasonableness.

## Information Contacts

Listed below are the commodity statisticians in the Crops Branch of the National Agricultural Statistics Service to contact for additional information. E-mail inquiries may be sent to [nass@nass.usda.gov](mailto:nass@nass.usda.gov)

Lance Honig, Chief, Crops Branch .....	(202) 720-2127
Jorge Garcia-Pratts, Head, Fruits, Vegetables and Special Crops Section.....	(202) 720-2127
Debbie Flippin – Fresh and Processing Vegetables, Onions, Strawberries.....	(202) 720-2157
Fred Granja – Apples, Apricots, Cherries, Plums, Prunes, Tobacco .....	(202) 720-4288
Chris Hawthorn – Citrus, Coffee, Grapes, Sugar Crops, Tropical Fruits.....	(202) 720-5412
Dave Losh – Hops .....	(360) 709-2400
Dan Norris – Austrian Winter Peas, Dry Edible Peas, Lentils, Mint, Mushrooms, Peaches, Pears, Wrinkled Seed Peas, Dry Beans .....	(202) 720-3250
Daphne Schauber – Berries, Cranberries, Potatoes, Sweet Potatoes .....	(202) 720-4285
Erika White – Floriculture, Maple Syrup, Nursery, Tree Nuts .....	(202) 720-4215

## Access to NASS Reports

For your convenience, you may access NASS reports and products the following ways:

- All reports are available electronically, at no cost, on the NASS web site: <http://www.nass.usda.gov>
- Both national and state specific reports are available via a free e-mail subscription. To set-up this free subscription, visit <http://www.nass.usda.gov> and in the “Follow NASS” box under “Receive reports by Email,” click on “National” or “State” to select the reports you would like to receive.

For more information on NASS surveys and reports, call the NASS Agricultural Statistics Hotline at (800) 727-9540, 7:30 a.m. to 4:00 p.m. ET, or e-mail: [nass@nass.usda.gov](mailto:nass@nass.usda.gov).

The United States Department of Agriculture (USDA) prohibits discrimination in all its programs and activities on the basis of race, color, national origin, age, disability, and where applicable, sex, marital status, familial status, parental status, religion, sexual orientation, political beliefs, genetic information, reprisal, or because all or a part of an individual's income is derived from any public assistance program. (Not all prohibited bases apply to all programs.) Persons with disabilities who require alternative means for communication of program information (Braille, large print, audiotape, etc.) should contact USDA's TARGET Center at (202) 720-2600 (voice and TDD).

To file a complaint of discrimination, write to USDA, Assistant Secretary for Civil Rights, Office of the Assistant Secretary for Civil Rights, 1400 Independence Avenue, S.W., Stop 9410, Washington, DC 20250-9410, or call toll-free at (866) 632-9992 (English) or (800) 877-8339 (TDD) or (866) 377-8642 (English Federal-relay) or (800) 845-6136 (Spanish Federal-relay). USDA is an equal opportunity provider and employer.