



United States
Department of
Agriculture

National
Agricultural
Statistics
Service



Noncitrus Fruits and Nuts 2005 Summary

July 2006

Fr Nt 1-3 (06)

USDA



Contents

	Page
Noncitrus Fruits and Tree Nuts	
Bearing Acreage, U.S.	7
Bearing Acreage and Yield per Acre by Crop	4
Narrative	3
Price and Value by Crop	6
Production Utilization, U.S.	7
Total and Utilized Production by Crop.	5
Noncitrus Fruits	
Apples, Commercial Crop	10, 64, 68
Apricots	20, 26, 27, 66
Avocados	20
Bananas	62
Berries (excluding strawberries)	30, 67
California Dry Fruits	27
Cherries, Sweet	36, 40, 66
Cherries, Tart	38, 40, 65
Cranberries	42, 65
Dates	20
Figs	22, 26, 27
Grapes	27, 44, 66, 69
Guavas	62
Hawaii Crops	62
Kiwifruit	22, 66
Nectarines	22, 65
Olives	22, 26
Papayas	62
Peaches	27, 50, 65, 69
Pears	27, 58, 66, 69
Pineapples	62
Plums	22, 66
Prunes (dried basis)	24, 27, 66
Prunes and Plums	24, 26, 66
Strawberries	28
Unutilized Production	64
Tree Nuts	
Almonds	70
Hazelnuts	70
Macadamia Nuts	70
Pecans	72, 74
Pistachios	70
Walnuts	70
Definition of Terms	76
Information Contacts	81
Marketing Seasons	78
Reliability of Production Data in this Report	80
State Value of Utilized Production Computation	77
U.S. MYA Price Computation	77

This page intentionally left blank.

2005 Noncitrus Fruit Utilized Production Up 9 Percent, Value Up 11 Percent

In 2005, the Nation's utilized production of the leading noncitrus fruit crops totaled 18.3 million tons, up 9 percent from the comparable 2004 utilized production. Utilized production increased from 2004 for avocados, Hawaii bananas, Oregon blackberries, cultivated blueberries, Maine wild blueberries, Oregon black raspberries, red raspberries, tart cherries, cranberries, grapes, California kiwifruit, California olives, California plums, California prunes, and strawberries.

The value of utilized production for noncitrus fruit crops totaled 9.96 billion dollars, up 11 percent from 2004. The value of utilized production for Oregon black raspberries increased 94 percent, Maine wild blueberries increased 86 percent, California prunes increased 81 percent, nectarines increased 47 percent, Oregon loganberries increased 44 percent, California olives increased 31 percent, avocados increased 25 percent, while cultivated blueberries and California plums each increased 24 percent from the previous year. Also, grapes and apples, which are the top 2 commodities in value of production, each increased 15 percent. However, the value of utilized production for prunes and plums decreased 25 percent, red raspberries and California all raspberries each decreased 13 percent, Hawaii papayas decreased 9 percent, tart cherries decreased 8 percent, California dates are down 7 percent, while strawberries and Hawaii pineapples each decreased 5 percent from 2004.

Highlights

Utilized apple production for 2005 is estimated at 9.76 billion pounds, down 6 percent from the 2004 level. Utilized production for Washington decreased 6 percent from last year. New York's utilized production decreased 20 percent, while Michigan's utilized production increased 6 percent compared to the previous year. Washington's crop experienced mild temperatures during February and March but cold temperatures and frosts in April caused some producers to experience production losses. In New York, a spring frost during bloom, extreme heat during early summer, and heavy rains and winds during mid October reduced the 2005 crop. Below normal humidity levels in Michigan kept disease pressure low. The apple crop was ahead of normal development throughout the growing season and fruit quality was very good to excellent.

Utilized grape production for 2005 totaled 7.83 million tons, up 26 percent from the 2004 crop. The California crop, which accounts for 89 percent of the 2005 U.S. utilized grape production, is up 24 percent from the previous year. Also for California, wine type production increased 35 percent, while raisin type and table type production both rose 13 percent from 2004. Utilized production increased from 2004 in all grape estimating States except Arizona, Arkansas, and Texas.

Utilized peach production in 2005 is estimated at 1.15 million tons, down 7 percent from the previous year and 5 percent below 2003. The California crop, accounting for 76 percent of the U.S. utilized peach production, is down 6 percent from 2004. For California, the Clingstone peach estimate is down 10 percent and the Freestone estimate is down 1 percent from 2004.

Utilized pear production for 2005 is 823,670 tons, down 6 percent from the previous year. Washington, the top producing State, utilized 415,000 tons, up 13 percent from 2004. California, the second largest producer at 202,000 tons, is down 25 percent from the previous season. Utilized pear production in Oregon, the third largest producing State, is 191,000 tons, down 9 percent from 2004.

U.S. Nut Production Down 3 Percent, Value Up 12 Percent

The 2005 U.S. nut production is estimated at 1.48 million tons (in-shell basis), a 3 percent decrease from a year earlier. The almond crop totaled 788,800 tons, down 9 percent from 2004. Walnut production for 2005, at 355,000 tons, is up 9 percent from the previous year. The pistachio crop totaled 141,500 tons, 18 percent less than 2004. Pecan production for 2005 is estimated at 140,100 tons, a 51 percent increase from 2004. Macadamia production, at 30,000 tons, is up 6 percent. Hazelnut production, at 27,600 tons, is down 26 percent from the previous year.

The 2005 U.S. value of utilized nut production is estimated at 3.97 billion dollars, up 12 percent from the 2004 value. The almond crop is valued at 2.34 billion dollars, up 7 percent from 2004. Pistachio value for 2005, at 577 million dollars, is 24 percent greater than last year. Walnuts are valued at 540 million dollars, 19 percent more than 2004. The value of the pecan crop increased 24 percent to 407 million dollars. Hazelnut value, at 61.8 million dollars, is 14 percent higher than the previous year. The macadamia value, at 44.4 million dollars, is up 8 percent.

**Noncitrus Fruits and Nuts: Bearing Acreage and Yield per Acre
by Crop, United States, 2003-2005**

Crop	Bearing Acreage			Yield per Acre		
	2003 <i>Acres</i>	2004 <i>Acres</i>	2005 <i>Acres</i>	2003 <i>Tons</i>	2004 <i>Tons</i>	2005 <i>Tons</i>
Noncitrus Fruits						
Apples	390,450	384,460	378,860	11.30	13.60	13.00
Apricots	17,840	17,340	15,840	5.47	5.83	5.15
Avocados	66,900	68,670	67,600	3.49	2.61	4.18
Bananas (HI) ¹	1,350	1,000	980	8.35	8.25	10.70
Blackberries (OR) ^{1 2}	6,400	6,300	6,500	3.26	3.80	3.73
Blueberries						
Cultivated ¹	41,670	44,430	48,310	2.26	2.56	2.47
Wild (ME) ³						
Boysenberries ¹	1,000	1,050	910	2.15	2.95	2.80
Loganberries (OR) ¹	70	60	60	1.36	1.42	1.84
Raspberries ¹						
Black (OR)	1,100	1,100	1,300	1.05	1.08	1.63
Red	11,200	10,900	11,400	3.23	3.03	3.40
All (CA)	3,000	4,100	4,200	10.30	11.00	9.80
Cherries, Sweet	74,990	78,275	79,010	3.28	3.62	3.17
Cherries, Tart	36,970	36,950	37,050	3.06	2.88	3.65
Cranberries	39,600	39,200	39,100	7.82	7.88	7.99
Dates (CA)	5,200	5,500	5,300	3.46	3.13	3.02
Figs (CA)	13,000	12,800	12,300	3.73	3.99	4.14
Grapes	951,010	933,100	934,850	6.99	6.69	8.37
Guavas (HI) ¹	530	525	630	6.30	7.70	6.45
Kiwifruit (CA)	4,500	4,500	4,500	5.64	5.93	8.27
Nectarines	36,500	36,500	37,700	7.48	7.37	6.64
Olives (CA)	36,000	32,000	32,000	3.28	3.36	4.44
Papayas (HI) ¹	1,565	1,235	1,480	13.60	14.50	11.10
Peaches	145,530	146,070	140,160	8.65	8.95	8.45
Pears	64,150	63,950	62,150	14.60	13.70	13.30
Pineapples (HI) ⁴	16,000	13,000	14,000			
Plums (CA)	36,000	36,000	36,000	5.81	4.33	4.75
Prunes (CA)	72,000	70,000	67,000	8.02	2.06	4.09
Prunes & Plums ⁵	4,010	3,760	3,560	4.06	6.65	2.56
Strawberries ¹	48,400	51,400	52,200	22.30	21.50	22.20
Total	2,126,935	2,104,175	2,094,950			
Tree Nuts						
Almonds (CA) ⁶	550,000	570,000	580,000	1.58	1.52	1.36
Hazelnuts	28,000	28,400	28,300	1.35	1.32	0.98
Macadamias (HI)	17,800	17,800	18,000	1.49	1.59	1.67
Pecans ³						
Pistachios (CA)	88,000	93,000	105,000	0.68	1.87	1.35
Walnuts (CA)	213,000	214,000	215,000	1.53	1.52	1.65
Total	896,800	923,200	946,300			

¹ Harvested acreage. Yield based on utilized production.

² Cultivated.

³ Bearing acreage and yield not calculated.

⁴ Acreage is total acres in crop, not harvested acreage. Yield is not estimated.

⁵ ID, MI, OR, and WA.

⁶ Yield based on in-shell basis. Shelling ratios are: 2003 - 0.600; 2004 - 0.580; 2005 - 0.580.

**Noncitrus Fruits and Nuts: Total and Utilized Production
by Crop, United States, 2003-2005**

Crop	Total Production			Utilized Production		
	2003 <i>1,000 Tons Fresh Equivalent</i>	2004 <i>1,000 Tons Fresh Equivalent</i>	2005 <i>1,000 Tons Fresh Equivalent</i>	2003 <i>1,000 Tons Fresh Equivalent</i>	2004 <i>1,000 Tons Fresh Equivalent</i>	2005 <i>1,000 Tons Fresh Equivalent</i>
Noncitrus Fruits						
Apples	4,396.6	5,220.3	4,932.5	4,351.5	5,180.7	4,881.3
Apricots	97.6	101.1	81.7	97.6	92.6	76.6
Avocados	233.4	179.4	282.4	233.4	179.4	282.4
Bananas (HI) ¹				11.3	8.3	10.5
Blackberries (OR) ²	21.2	24.0	24.5	20.9	24.0	24.2
Blueberries						
Cultivated	94.8	114.4	119.3	94.0	113.8	119.1
Wild (ME)	40.2	23.0	29.8	40.2	23.0	29.8
Boysenberries	2.2	3.1	2.6	2.2	3.1	2.6
Loganberries (OR)	0.1	0.1	0.1	0.1	0.1	0.1
Raspberries						
Black (OR)	1.2	1.2	2.1	1.2	1.2	2.1
Red	36.5	33.1	38.8	36.2	33.1	38.8
All (CA)	30.8	45.0	41.3	30.8	45.0	41.3
Cherries, Sweet	245.7	283.1	250.8	243.6	279.2	243.6
Cherries, Tart	113.2	106.5	135.2	113.2	106.5	134.2
Cranberries	309.7	308.8	312.2	309.7	308.4	312.2
Dates (CA)	18.0	17.2	16.0	18.0	17.2	16.0
Figs (CA)	48.5	51.1	50.9	48.5	51.1	50.9
Grapes	6,643.5	6,240.0	7,828.7	6,489.6	6,229.9	7,825.5
Guavas (HI) ¹				3.4	4.1	4.1
Kiwifruit (CA)	25.4	26.7	37.2	24.0	24.7	36.2
Nectarines	273.0	269.0	250.5	273.0	252.0	250.5
Olives (CA)	118.0	107.5	142.0	118.0	107.5	142.0
Papayas (HI) ¹				21.3	17.9	16.5
Peaches	1,259.5	1,307.1	1,184.6	1,205.2	1,229.8	1,145.1
Pears	934.1	878.3	825.3	928.5	873.4	823.7
Pineapples (HI) ¹				300.0	220.0	212.0
Plums (CA)	209.0	156.0	171.0	209.0	144.0	171.0
Prunes (CA)	577.5	143.9	274.2	536.0	141.0	265.0
Prunes & Plums ³	16.3	25.0	9.1	14.9	18.9	9.1
Strawberries ¹				1,078.0	1,106.9	1,161.1
Total				16,853.3	16,836.8	18,327.5
	<i>1,000 Tons In-Shell Equivalent</i>	<i>1,000 Tons In-Shell Equivalent</i>	<i>1,000 Tons In-Shell Equivalent</i>	<i>1,000 Tons In-Shell Equivalent</i>	<i>1,000 Tons In-Shell Equivalent</i>	<i>1,000 Tons In-Shell Equivalent</i>
Tree Nuts ¹						
Almonds (CA)				866.7	866.4	788.8
Hazelnuts				37.9	37.5	27.6
Macadamias (HI)				26.5	28.3	30.0
Pecans				141.1	92.9	140.1
Pistachios (CA)				59.5	173.5	141.5
Walnuts (CA)				326.0	325.0	355.0
Total				1,457.7	1,523.6	1,483.0

¹ Only utilized production estimated.

² Cultivated.

³ ID, MI, OR, and WA.

**Noncitrus Fruits and Nuts: Price and Value
by Crop, United States, 2003-2005**

Crop	Unit ¹	Price			Value of Utilized Production		
		2003 <i>Dollars</i>	2004 <i>Dollars</i>	2005 <i>Dollars</i>	2003 <i>1,000 Dollars</i>	2004 <i>1,000 Dollars</i>	2005 <i>1,000 Dollars</i>
Noncitrus Fruits							
Apples	Lb	0.209	0.159	0.194	1,817,240	1,646,801	1,893,580
Apricots	Ton	356.00	378.00	520.00	34,702	35,012	39,880
Avocados	Ton	1,690.00	1,620.00	1,280.00	394,367	291,244	362,808
Bananas (HI)	Lb	0.410	0.490	0.439	9,225	8,085	9,175
Blackberries(OR) ²	Lb	0.695	0.711	0.762	28,986	34,057	36,867
Blueberries							
Cultivated	Lb	1.170	1.210	1.440	220,649	275,963	342,311
Wild (ME)	Lb	0.334	0.456	0.656	26,880	20,970	39,040
Boysenberries	Lb	0.866	1.160	1.400	3,725	7,168	7,158
Loganberries (OR)	Lb	0.990	0.771	0.855	189	131	188
Raspberries							
Black (OR)	Lb	1.360	2.250	2.460	3,132	5,357	10,418
Red	Lb	0.563	0.782	0.583	40,774	51,723	45,184
All (CA)	Lb	2.080	2.090	1.990	127,920	188,100	164,175
Cherries							
Sweet	Ton	1,400.00	1,570.00	1,990.00	342,113	437,133	484,348
Tart	Lb	0.354	0.328	0.239	80,210	69,941	64,232
Cranberries	Bbl	33.90	32.90	34.40	209,834	202,670	214,812
Dates (CA)	Ton	1,380.00	1,310.00	1,310.00	24,840	22,532	20,960
Figs (CA)	Ton	317.00	396.00	435.00	15,373	20,214	22,122
Grapes	Ton	402.00	483.00	442.00	2,609,289	3,010,958	3,459,407
Guavas (HI)	Lb	0.138	0.144	0.139	925	1,166	1,126
Kiwifruit (CA)	Ton	853.00	809.00	644.00	20,472	19,977	23,326
Nectarines	Ton	436.00	342.00	507.00	119,028	86,184	126,942
Olives (CA)	Ton	409.00	564.00	560.00	48,289	60,643	79,511
Papayas (HI)	Lb	0.307	0.345	0.342	13,069	12,361	11,241
Peaches	Ton	377.00	375.00	446.00	454,289	461,624	511,268
Pears	Ton	294.00	335.00	358.00	273,142	292,969	294,697
Pineapples (HI)	Ton	338.00	378.00	374.00	101,470	83,104	79,288
Plums (CA)	Ton	418.00	516.00	541.00	87,362	74,347	92,463
Prunes (CA)	Ton	772.00	1,500.00	1,500.00	129,696	72,000	130,500
Prunes & Plums ³	Ton	353.00	360.00	562.00	5,260	6,802	5,085
Strawberries	Cwt	63.80	66.00	59.60	1,375,142	1,460,077	1,383,064
Total					8,617,592	8,959,313	9,955,176
Almonds (CA) (Shelled)							
	Lb	1.570	2.210	2.600	1,600,144	2,189,005	2,337,140
Hazelnuts	Ton	1,030.00	1,440.00	2,240.00	39,037	54,000	61,824
Macadamias (HI)	Lb	0.610	0.730	0.740	32,330	41,245	44,400
Pecans	Lb	0.984	1.760	1.450	277,629	326,924	406,830
Pistachios (CA)	Lb	1.220	1.340	2.040	145,180	464,980	577,320
Walnuts (CA)	Ton	1,160.00	1,390.00	1,520.00	378,160	451,750	539,600
Total					2,472,480	3,527,904	3,967,114

¹ Ton refers to the 2,000 lb. short ton.

² Cultivated.

³ ID, MI, OR, and WA.

**Fruits and Nuts: Bearing Acreage,
United States, 2003-2005**

Year	Citrus Fruits ¹	Major Deciduous Fruits ²	Miscellaneous Noncitrus ³	Nuts ⁴	Total
	<i>Acres</i>	<i>Acres</i>	<i>Acres</i>	<i>Acres</i>	<i>Acres</i>
2003	1,031,900	1,829,450	297,485	896,800	4,055,635
2004	983,600	1,806,405	297,770	923,200	4,010,975
2005	939,000	1,792,180	302,770	946,300	3,980,250

¹ Grapefruit, lemons, oranges, tangelos, tangerines, and Temples.

² Commercial apples, apricots, cherries, grapes, nectarines, peaches, pears, plums, and prunes.

³ Avocados, bananas, berries, cranberries, dates, figs, guavas, kiwifruit, olives, papayas, pineapples, and strawberries.

⁴ Almonds, hazelnuts, macadamia nuts, pistachios, and walnuts.

**Noncitrus Fruits: Production Utilization,
United States, 2003-2005 ¹**

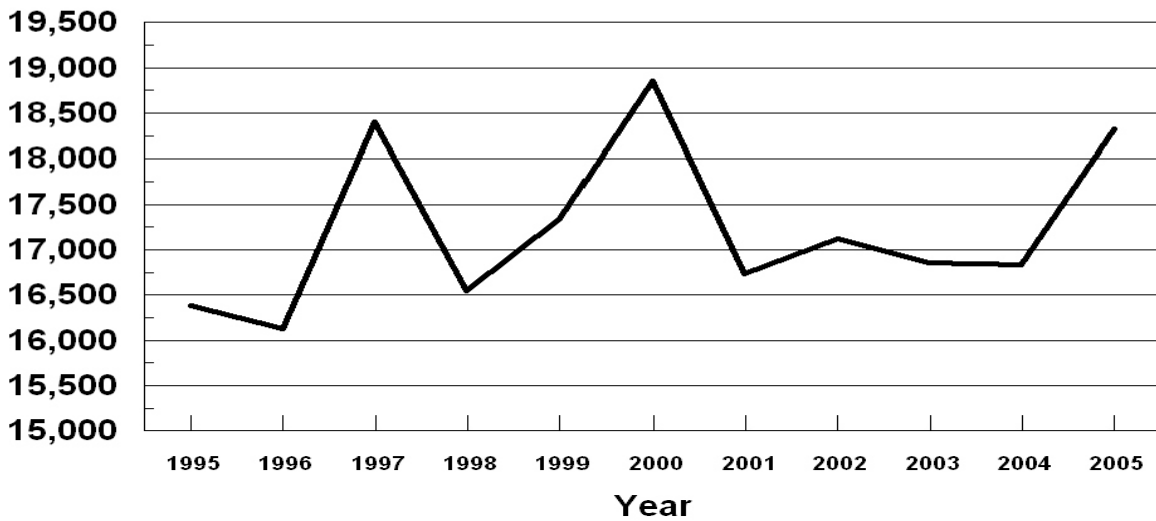
Year	Utilized Production <i>1,000 Tons</i>	Fresh <i>1,000 Tons</i>	Processed ²					Other <i>1,000 Tons</i>
			Canned <i>1,000 Tons</i>	Dried <i>1,000 Tons</i>	Juice <i>1,000 Tons</i>	Frozen <i>1,000 Tons</i>	Wine <i>1,000 Tons</i>	
2003	16,853.3	6,675.9	1,762.3	2,293.2	1,295.4	715.8	3,581.7	219.3
2004	16,836.8	7,177.3	1,710.9	1,424.6	1,421.4	685.4	3,818.5	290.3
2005	18,327.5	7,194.1	1,594.0	2,101.6	1,597.5	705.1	4,551.6	271.4

¹ Cranberry quantity included in utilized production, excluded from fresh and processed breakdown.

² Processed strawberries are included in frozen.

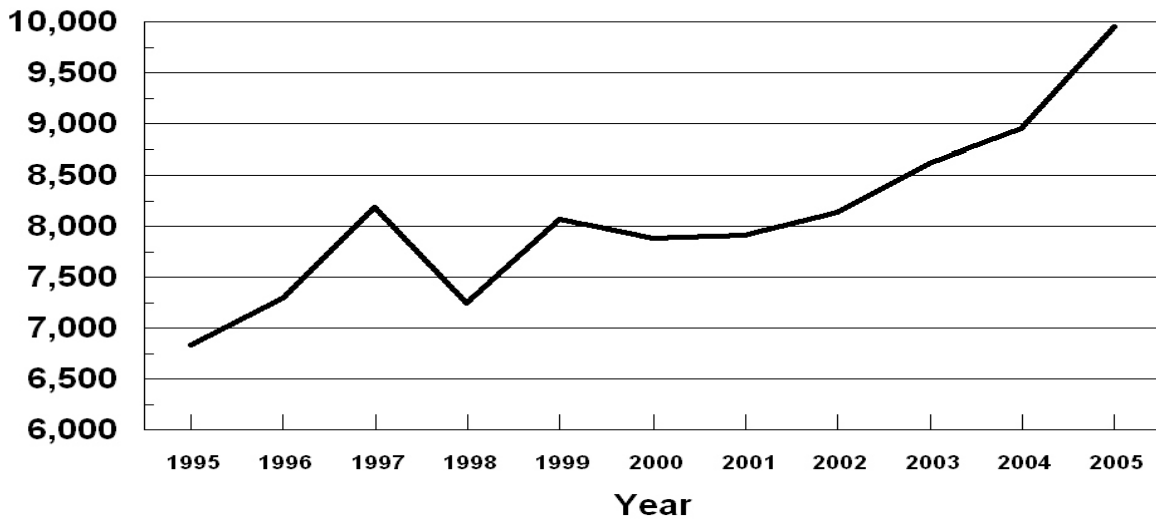
U.S. Noncitrus Fruits Utilized Production 1995 - 2005

1,000 Tons Fresh Equivalent



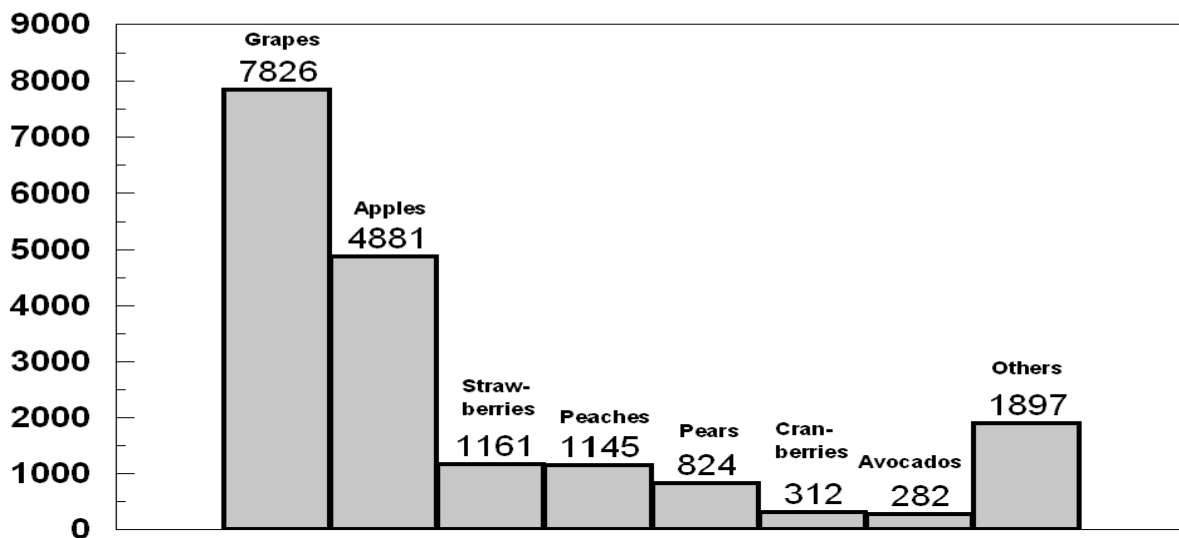
U.S. Noncitrus Fruits Value of Utilized Production 1995 - 2005

Million Dollars



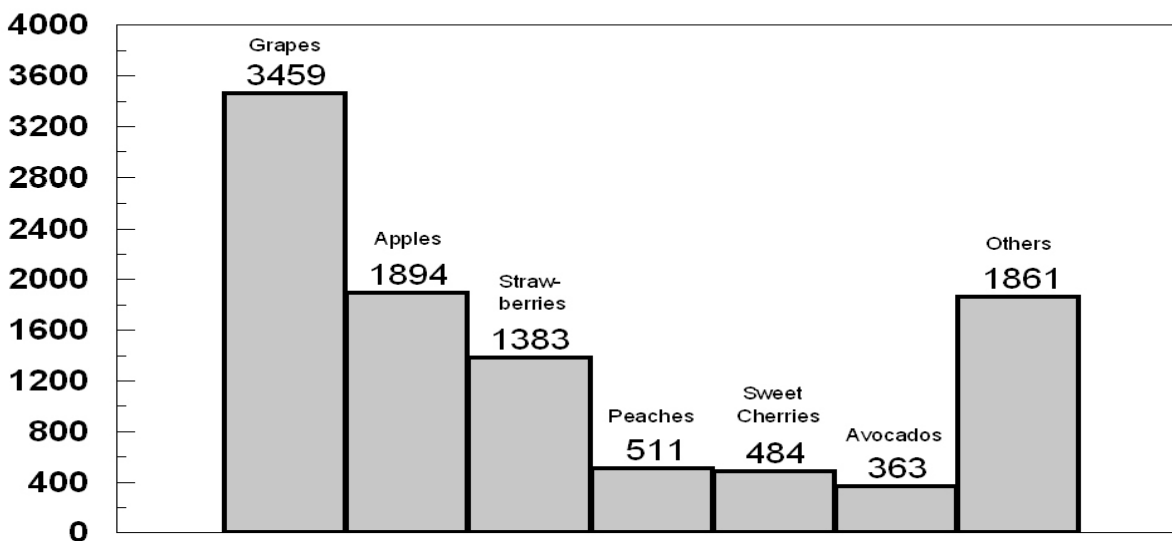
U.S. Noncitrus Fruits Utilized Production by Major Fruit, 2005

(000) Tons Fresh Equivalent



U.S. Noncitrus Fruits Value of Utilized Production by Major Fruit, 2005

Million Dollars



**Apples, Commercial: Bearing Acreage and Yield
by State and United States, 2003-2005**

State	Bearing Acreage			Yield per Acre ¹		
	2003 <i>Acres</i>	2004 <i>Acres</i>	2005 <i>Acres</i>	2003 <i>Pounds</i>	2004 <i>Pounds</i>	2005 <i>Pounds</i>
AZ	1,200	1,200	1,100	5,830	30,800	20,200
AR ²	600	550		4,000	3,450	
CA	28,000	26,000	25,000	16,100	13,700	14,200
CO	1,700	1,600	1,500	12,900	17,500	20,700
CT	2,200	2,200	2,200	9,770	8,860	7,050
GA	1,200	1,200	1,300	10,800	10,000	10,800
ID	3,400	3,400	3,400	20,600	23,500	20,600
IL	4,000	4,000	4,000	13,100	14,100	12,300
IN	4,000	4,000	4,000	12,800	15,000	12,500
IA	1,600	1,600	1,600	3,750	3,310	1,310
KS ²	300	290		11,300	9,660	
KY	950	920	860	7,890	8,370	6,400
ME	3,500	3,500	3,500	12,600	13,400	8,860
MD	2,400	2,400	2,400	16,700	14,200	17,100
MA	4,100	4,100	4,100	10,400	10,200	6,950
MI	41,500	40,500	40,500	21,400	18,000	19,300
MN	2,600	2,500	2,400	10,400	10,000	9,170
MO	3,900	3,900	4,100	10,300	12,300	12,000
NH	2,100	2,100	2,100	12,400	14,500	10,000
NJ	2,400	2,300	2,300	16,700	17,400	19,600
NM ²	1,500	1,500		1,330	3,070	
NY	45,000	45,000	45,000	23,800	28,400	23,100
NC	7,000	7,000	6,800	19,300	22,100	19,100
OH	7,600	7,300	7,300	11,800	12,300	13,600
OR	6,500	5,400	4,200	20,500	30,200	34,500
PA	22,000	22,100	21,800	20,100	18,300	23,600
RI	300	300	300	7,670	7,330	5,330
SC	1,200	1,000	700	5,000	6,000	5,710
TN	1,000	900	900	12,000	12,200	9,440
UT	2,000	2,000	2,000	14,000	16,000	19,000
VT	2,700	2,700	2,700	15,600	15,400	12,200
VA	15,000	15,000	15,000	18,000	20,000	18,700
WA	155,000	155,000	155,000	29,400	39,700	37,400
WV	6,000	5,000	5,000	14,500	16,200	17,400
WI	6,000	6,000	5,800	11,300	9,500	8,970
US	390,450	384,460	378,860	22,500	27,200	26,000

¹ Yield is based on total production, which includes unharvested production and fruit harvested but not sold due to market conditions.

² Estimates discontinued in 2005.

**Apples, Commercial: Total and Utilized Production
by State and United States, 2003-2005**

State	Total Production			Utilized Production		
	2003	2004	2005	2003	2004	2005
	<i>Million Pounds</i>	<i>Million Pounds</i>	<i>Million Pounds</i>	<i>Million Pounds</i>	<i>Million Pounds</i>	<i>Million Pounds</i>
AZ	7.0	37.0	22.2	7.0	37.0	22.0
AR ¹	2.4	1.9		2.3	1.1	
CA	450.0	355.0	355.0	440.0	355.0	355.0
CO	22.0	28.0	31.0	21.0	27.0	27.0
CT	21.5	19.5	15.5	20.0	18.5	15.0
GA	13.0	12.0	14.0	12.9	12.0	14.0
ID	70.0	80.0	70.0	70.0	80.0	70.0
IL	52.5	56.5	49.0	45.9	51.3	38.5
IN	51.0	60.0	50.0	48.0	58.0	40.0
IA	6.0	5.3	2.1	4.7	4.8	1.9
KS ¹	3.4	2.8		2.6	2.2	
KY	7.5	7.7	5.5	7.1	7.0	4.7
ME	44.0	47.0	31.0	40.0	43.0	29.0
MD	40.0	34.1	41.0	38.4	33.0	40.8
MA	42.5	42.0	28.5	37.0	37.0	26.0
MI	890.0	730.0	780.0	890.0	730.0	775.0
MN	27.0	25.0	22.0	19.8	19.9	16.0
MO	40.0	48.0	49.0	40.0	47.0	47.0
NH	26.0	30.5	21.0	24.5	28.0	19.5
NJ	40.0	40.0	45.0	40.0	38.0	44.0
NM ¹	2.0	4.6		1.8	2.5	
NY	1,070.0	1,280.0	1,040.0	1,060.0	1,280.0	1,030.0
NC	135.0	155.0	130.0	130.0	132.0	118.0
OH	90.0	90.0	99.0	88.0	90.0	98.0
OR	133.0	163.0	145.0	132.0	160.0	135.0
PA	442.0	405.0	515.0	442.0	400.0	510.0
RI	2.3	2.2	1.6	2.0	2.1	1.4
SC	6.0	6.0	4.0	4.5	3.0	2.5
TN	12.0	11.0	8.5	11.5	10.5	7.5
UT	28.0	32.0	38.0	27.5	31.4	35.7
VT	42.0	41.5	33.0	37.5	38.0	29.5
VA	270.0	300.0	280.0	262.0	297.0	277.0
WA	4,550.0	6,150.0	5,800.0	4,550.0	6,150.0	5,800.0
WV	87.0	81.0	87.0	85.0	80.0	83.0
WI	68.0	57.0	52.0	58.0	55.0	49.5
US	8,793.1	10,440.6	9,864.9	8,703.0	10,361.3	9,762.5

¹ Estimates discontinued in 2005.

**Apples, Commercial: Price and Value by State
by State and United States, 2003-2005**

State	Price per Pound			Value of Utilized Production		
	2003	2004	2005	2003	2004	2005
	<i>Dollars</i>	<i>Dollars</i>	<i>Dollars</i>	<i>1,000 Dollars</i>	<i>1,000 Dollars</i>	<i>1,000 Dollars</i>
AZ	0.078	0.153	0.240	549	5,656	5,275
AR ¹	0.235	0.355		540	390	
CA	0.178	0.149	0.210	78,190	52,975	74,718
CO	0.185	0.154	0.179	3,878	4,171	4,824
CT	0.371	0.395	0.462	7,420	7,310	6,930
GA	0.106	0.228	0.236	1,368	2,740	3,310
ID	0.202	0.118	0.179	14,133	9,464	12,503
IL	0.291	0.237	0.372	13,348	12,182	14,320
IN	0.263	0.219	0.294	12,609	12,686	11,770
IA	0.424	0.466	0.453	1,991	2,235	861
KS ¹	0.273	0.276		711	607	
KY	0.327	0.368	0.346	2,322	2,573	1,628
ME	0.298	0.320	0.341	11,935	13,740	9,900
MD	0.156	0.136	0.144	6,008	4,486	5,884
MA	0.346	0.381	0.448	12,803	14,108	11,659
MI	0.117	0.123	0.125	103,925	89,780	97,130
MN	0.436	0.468	0.535	8,624	9,307	8,563
MO	0.208	0.164	0.165	8,311	7,713	7,744
NH	0.279	0.301	0.310	6,835	8,420	6,045
NJ	0.146	0.151	0.313	5,840	5,740	13,779
NM ¹	0.307	0.418		553	1,045	
NY	0.145	0.151	0.165	154,030	193,560	169,990
NC	0.132	0.132	0.117	17,103	17,420	13,859
OH	0.274	0.276	0.286	24,130	24,831	28,069
OR	0.175	0.163	0.157	23,066	26,057	21,238
PA	0.103	0.101	0.100	45,425	40,353	50,928
RI	0.393	0.480	0.524	785	1,008	734
SC	0.219	0.108	0.172	985	323	430
TN	0.252	0.263	0.268	2,903	2,765	2,012
UT	0.230	0.268	0.159	6,317	8,415	5,671
VT	0.266	0.225	0.304	9,958	8,550	8,970
VA	0.096	0.149	0.122	25,066	44,226	33,830
WA	0.259	0.160	0.213	1,178,020	986,215	1,234,324
WV	0.097	0.091	0.084	8,214	7,250	7,010
WI	0.334	0.336	0.397	19,345	18,500	19,672
US	0.209	0.159	0.194	1,817,240	1,646,801	1,893,580

¹ Estimates discontinued in 2005.

**Apples, Commercial: Fresh Market Utilization and Price
by State and United States, 2003-2005**

State	Fresh Market					
	Quantity			Price per Pound ¹		
	2003 <i>Million Pounds</i>	2004 <i>Million Pounds</i>	2005 <i>Million Pounds</i>	2003 <i>Dollars</i>	2004 <i>Dollars</i>	2005 <i>Dollars</i>
AZ	0.1	3.0	5.0	0.700	0.560	0.630
CA	220.0	165.0	160.0	0.266	0.226	0.378
CO	13.0	18.0	14.0	0.261	0.197	0.271
CT	16.0	15.5	13.0	0.450	0.460	0.520
ID	45.0	40.0	35.0	0.290	0.210	0.340
IN	35.0	39.0	26.5	0.340	0.293	0.415
KY	7.0	6.7	4.3	0.330	0.380	0.372
ME	33.0	35.0	24.0	0.350	0.380	0.400
MD	16.7	10.5	17.8	0.258	0.265	0.241
MA	29.5	31.5	22.0	0.420	0.440	0.520
MI	310.0	240.0	265.0	0.195	0.202	0.210
MO	20.0	33.0	27.0	0.355	0.211	0.242
NH	14.5	18.0	12.5	0.430	0.440	0.450
NJ	24.0	28.0	33.0	0.195	0.180	0.393
NM ²	1.8	2.5		0.307	0.418	
NY	510.0	660.0	490.0	0.230	0.228	0.264
NC	40.0	47.0	35.0	0.256	0.229	0.229
OH	78.0	78.1	85.4	0.300	0.308	0.319
OR	90.0	110.0	95.0	0.234	0.222	0.209
PA	95.0	110.0	137.0	0.213	0.172	0.180
SC	3.0	1.2	1.2	0.269	0.199	0.264
UT	23.0	29.2	27.4	0.265	0.284	0.200
VT	32.0	33.0	24.0	0.300	0.250	0.360
VA	52.0	132.0	107.0	0.221	0.250	0.204
WA	3,600.0	4,600.0	4,400.0	0.314	0.206	0.274
WV	16.0	15.0	16.0	0.215	0.172	0.173
WI	48.0	47.0	42.0	0.390	0.380	0.450
Oth Sts	89.2	89.8	64.3	0.327	0.335	0.442
US	5,461.8	6,638.0	6,183.4	0.294	0.218	0.276

¹ Equivalent packinghouse door returns for CA, MI, NY, and WA; price at first sale for all other States.

² Estimates discontinued in 2005.

**Apples, Commercial: Value of Fresh Market Production
by State and United States, 2003-2005**

State	Fresh Market Value of Production		
	2003	2004	2005
	<i>1,000 Dollars</i>	<i>1,000 Dollars</i>	<i>1,000 Dollars</i>
AZ	70	1,680	3,150
CA	58,520	37,290	60,480
CO	3,393	3,546	3,794
CT	7,200	7,130	6,760
ID	13,050	8,400	11,900
IN	11,900	11,427	10,998
KY	2,310	2,546	1,600
ME	11,550	13,300	9,600
MD	4,309	2,783	4,290
MA	12,390	13,860	11,440
MI	60,450	48,480	55,650
MO	7,100	6,963	6,534
NH	6,235	7,920	5,625
NJ	4,680	5,040	12,969
NM ¹	553	1,045	
NY	117,300	150,480	129,360
NC	10,240	10,763	8,015
OH	23,400	24,055	27,243
OR	21,060	24,420	19,855
PA	20,235	18,920	24,660
SC	807	239	317
UT	6,095	8,293	5,480
VT	9,600	8,250	8,640
VA	11,492	33,000	21,828
WA	1,130,400	947,600	1,205,600
WV	3,440	2,580	2,768
WI	18,720	17,860	18,900
Oth Sts	29,131	30,108	28,424
US	1,605,630	1,447,978	1,705,880

¹ Estimates discontinued in 2005.

**Apples, Commercial: Processed Utilization and Price
by State and United States, 2003-2005**

State	Processed					
	Quantity			Price per Ton		
	2003 <i>Million Pounds</i>	2004 <i>Million Pounds</i>	2005 <i>Million Pounds</i>	2003 <i>Dollars</i>	2004 <i>Dollars</i>	2005 <i>Dollars</i>
AZ	6.9	34.0	17.0	139.00	234.00	250.00
CA	220.0	190.0	195.0	179.00	165.00	146.00
CO	8.0	9.0	13.0	121.00	139.00	158.00
CT	4.0	3.0	2.0	110.00	120.00	170.00
ID	25.0	40.0	35.0	86.60	53.20	34.50
IN	13.0	19.0	13.5	109.00	133.00	114.00
KY	0.1	0.3	0.4	240.00	180.00	140.00
ME	7.0	8.0	5.0	110.00	110.00	120.00
MD	21.7	22.5	23.0	157.00	151.00	139.00
MA	7.5	5.5	4.0	110.00	90.20	110.00
MI	580.0	490.0	510.0	150.00	169.00	163.00
MO	20.0	14.0	20.0	121.00	107.00	121.00
NH	10.0	10.0	7.0	120.00	100.00	120.00
NJ	16.0	10.0	11.0	145.00	140.00	147.00
NY	550.0	620.0	540.0	134.00	139.00	150.00
NC	90.0	85.0	83.0	153.00	157.00	141.00
OH	10.0	11.9	12.6	146.00	130.00	131.00
OR	42.0	50.0	40.0	95.50	65.50	69.20
PA	347.0	290.0	373.0	145.00	148.00	141.00
SC	1.5	1.8	1.3	237.00	93.30	174.00
UT	4.5	2.2	8.3	98.70	111.00	46.00
VT	5.5	5.0	5.5	130.00	120.00	120.00
VA	210.0	165.0	170.0	129.00	136.00	141.00
WA	950.0	1,550.0	1,400.0	100.00	49.80	41.00
WV	69.0	65.0	67.0	138.00	144.00	127.00
WI	10.0	8.0	7.5	125.00	160.00	206.00
Oth Sts	12.5	14.1	15.0	182.00	160.00	183.00
US	3,241.2	3,723.3	3,579.1	131.00	107.00	105.00

**Apples, Commercial: Value of Processed Production
by State and United States, 2003-2005**

State	Processed Value of Production		
	2003	2004	2005
	<i>1,000 Dollars</i>	<i>1,000 Dollars</i>	<i>1,000 Dollars</i>
AZ	479	3,976	2,125
CA	19,670	15,685	14,238
CO	485	625	1,030
CT	220	180	170
ID	1,083	1,064	603
IN	709	1,259	772
KY	12	27	28
ME	385	440	300
MD	1,699	1,703	1,594
MA	413	248	219
MI	43,475	41,300	41,480
MO	1,211	750	1,210
NH	600	500	420
NJ	1,160	700	810
NY	36,730	43,080	40,630
NC	6,863	6,657	5,844
OH	730	776	826
OR	2,006	1,637	1,383
PA	25,190	21,433	26,268
SC	178	84	113
UT	222	122	191
VT	358	300	330
VA	13,574	11,226	12,002
WA	47,620	38,615	28,724
WV	4,774	4,670	4,242
WI	625	640	772
Oth Sts	1,139	1,126	1,376
US	211,610	198,823	187,700

**Apples, Commercial: Processed Utilization, Use, and Price
by State and United States, 2003-2005¹**

Use and State	Processed Utilization					
	Quantity			Price per Ton		
	2003 <i>Million Pounds</i>	2004 <i>Million Pounds</i>	2005 <i>Million Pounds</i>	2003 <i>Dollars</i>	2004 <i>Dollars</i>	2005 <i>Dollars</i>
Canned						
CA	16.0			142.00		
MI	190.0	210.0	200.0	175.00	180.00	170.00
NY	270.0	340.0	310.0	150.00	156.00	160.00
NC	54.0	59.0	48.0	161.00	175.00	160.00
PA	263.0	230.0	267.0	160.00	160.00	160.00
VA	156.0	125.0	124.0	140.00	151.00	161.00
WA	190.0	190.0	160.0	142.00	74.00	71.50
WV	48.0	47.0	44.0	154.00	157.00	140.00
Oth Sts	48.6	56.7	49.0	162.00	162.00	154.00
US	1,235.6	1,257.7	1,202.0	154.00	149.00	149.00
Juice & Cider						
CA	190.0	170.0	180.0	178.00	164.00	149.00
MI	200.0	115.0	130.0	95.00	110.00	110.00
NY	200.0	200.0	160.0	104.00	96.00	92.00
NC	34.0	12.0	20.0	137.00	103.00	106.00
OR	22.0	27.0	21.0	65.00	37.00	26.00
PA	75.0	52.0	97.0	100.00	100.00	85.00
VA	47.0	24.0	30.0	101.00	99.00	92.00
WA	530.0	1,110.0	980.0	77.00	38.00	28.00
WV	14.0	13.0	19.0	104.00	104.00	101.00
Oth Sts	122.5	153.0	145.4	110.00	125.00	119.00
US	1,434.5	1,876.0	1,782.4	103.00	70.50	65.20

¹ Missing data included in Other States to avoid disclosure of individual operations.

**Apples, Commercial: Processed Utilization, Use, and Price
by State and United States, 2003-2005¹ (continued)**

Use and State	Processed Utilization					
	Quantity			Price per Ton		
	2003 <i>Million Pounds</i>	2004 <i>Million Pounds</i>	2005 <i>Million Pounds</i>	2003 <i>Dollars</i>	2004 <i>Dollars</i>	2005 <i>Dollars</i>
Frozen						
MI	180.0			185.00		
NY	50.0	50.0	30.0	164.00	228.00	168.00
Oth Sts	52.8	205.8	214.4	141.00	160.00	150.00
US	282.8	255.8	244.4	173.00	173.00	153.00
Dried						
US	182.2	200.8	201.1	107.00	73.60	58.90
Fresh Slices						
US ²		54.0	70.7		186.00	273.00
Other ³						
MI	10.0	8.0	8.0	140.00	180.00	180.00
NY	30.0	30.0	20.0	132.00	84.00	138.00
Oth Sts	66.1	41.0	50.5	164.00	118.00	148.00
US	106.1	79.0	78.5	152.00	112.00	149.00

¹ Missing data included in Other States to avoid disclosure of individual operations.

² Estimates initiated July 2005 for 2004 crop year.

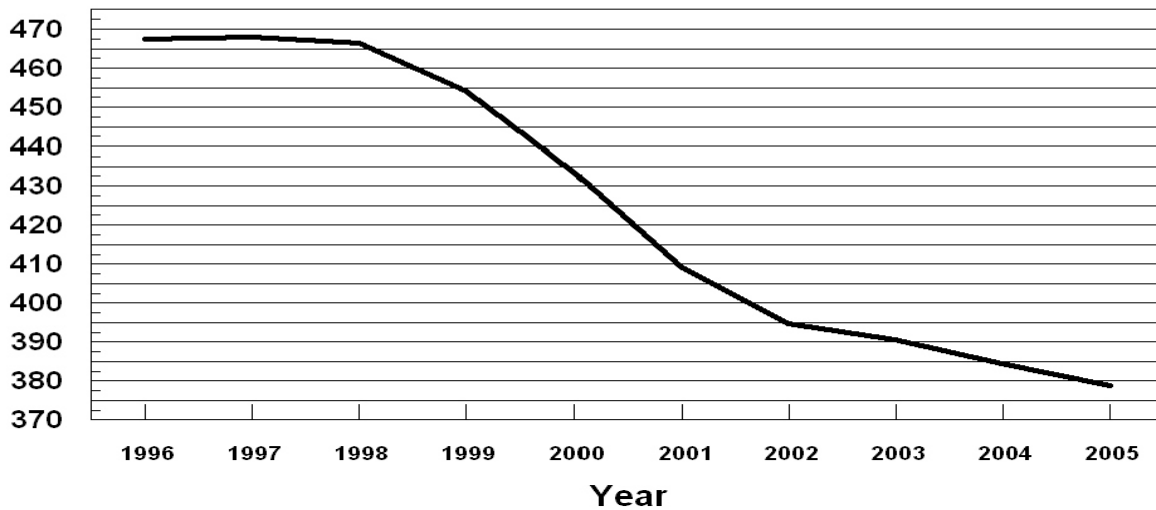
³ Includes vinegar, wine, and slices for pie making.

U. S. Apples

Bearing Acres

1996 - 2005

(000) Acres

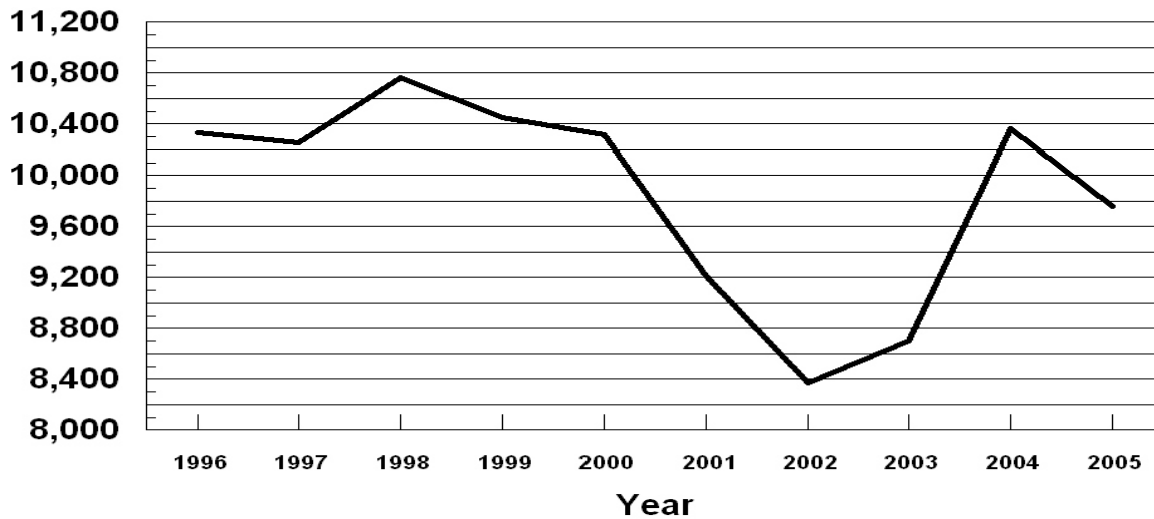


U. S. Apples

Utilized Production

1996 - 2005

Million Pounds



**Miscellaneous Fruits: Bearing Acreage, Yield, Production, and Utilization
by State and United States, 2003-2005**

Crop, State, and Season	Bearing Acreage <i>Acres</i>	Yield Per Acre ¹ <i>Tons</i>	Production		Utilization	
			Total <i>Tons</i>	Utilized <i>Tons</i>	Fresh <i>Tons</i>	Processed <i>Tons</i>
Apricots ²						
CA						
2003	16,500	5.61	92,500	92,500	22,000	70,500
2004	16,000	5.88	94,000	85,500	17,900	67,600
2005	14,500	5.21	75,500	70,500	18,500	52,000
UT						
2003			180	160		
2004			330	290		
2005			250	245		
WA						
2003			4,900	4,900		
2004			6,800	6,800		
2005			5,900	5,900		
US						
2003	17,840	5.47	97,580	97,560	26,250	71,310
2004	17,340	5.83	101,130	92,590	23,650	68,940
2005	15,840	5.15	81,650	76,645	23,645	53,000
Avocados						
CA						
2003-04	60,500	3.57	216,000	216,000	216,000	
2004-05	62,000	2.44	151,000	151,000	151,000	
2005-06	62,000	4.35	270,000	270,000	270,000	
FL						
2003-04	6,100	2.79	17,000	17,000	17,000	
2004-05	6,400	4.38	28,000	28,000	28,000	
2005-06	5,300	2.26	12,000	12,000	12,000	
HI						
2003-04	300	1.27	380	380	380	
2004-05	270	1.37	370	370	370	
2005-06	300	1.33	400	400	400	
US						
2003-04	66,900	3.49	233,380	233,380	233,380	
2004-05	68,670	2.61	179,370	179,370	179,370	
2005-06	67,600	4.18	282,400	282,400	282,400	
Dates						
CA						
2003	5,200	3.46	18,000	18,000	18,000	
2004	5,500	3.13	17,200	17,200	17,200	
2005	5,300	3.02	16,000	16,000	16,000	

¹ Yield is based on total production.

² Missing data not published to avoid disclosure of individual operations.

**Miscellaneous Fruits: Price and Value by State
and United States, 2003-2005 ¹**

Crop, State, and Season	Price per Ton			Value of Production		
	Fresh <i>Dollars</i>	Processed <i>Dollars</i>	All <i>Dollars</i>	Fresh <i>1,000 Dollars</i>	Processed <i>1,000 Dollars</i>	Total <i>1,000 Dollars</i>
Apricots ²						
CA						
2003	492.00	264.00	316.00	10,824	18,397	29,221
2004	538.00	283.00	334.00	9,630	18,945	28,575
2005	1,090.00	271.00	481.00	20,165	13,765	33,930
UT						
2003			588.00			94
2004			610.00			177
2005			959.00			235
WA						
2003			1,100.00			5,387
2004			921.00			6,260
2005			969.00			5,715
US						
2003	618.00	262.00	356.00	16,234	18,468	34,702
2004	672.00	279.00	378.00	15,897	19,115	35,012
2005	1,100.00	266.00	520.00	26,035	13,845	39,880
Avocados						
CA						
2003-04	1,760.00		1,760.00	380,160		380,160
2004-05	1,830.00		1,830.00	276,330		276,330
2005-06	1,300.00		1,300.00	351,000		351,000
FL						
2003-04	808.00		808.00	13,736		13,736
2004-05	516.00		516.00	14,448		14,448
2005-06	940.00		940.00	11,280		11,280
HI						
2003-04	1,240.00		1,240.00	471		471
2004-05	1,260.00		1,260.00	466		466
2005-06	1,320.00		1,320.00	528		528
US						
2003-04	1,690.00		1,690.00	394,367		394,367
2004-05	1,620.00		1,620.00	291,244		291,244
2005-06	1,280.00		1,280.00	362,808		362,808
Dates						
CA						
2003	1,380.00		1,380.00	24,840		24,840
2004	1,310.00		1,310.00	22,532		22,532
2005	1,310.00		1,310.00	20,960		20,960

¹ Missing data not published to avoid disclosure of individual operations.

² Apricot processed price excludes dried. Processing value includes dried.

**Miscellaneous Fruits: Bearing Acreage, Yield, Production, and Utilization
by State and United States, 2003-2005 ¹**

Crop, State, and Season	Bearing Acreage	Yield Per Acre ²	Production		Utilization	
			Total	Utilized	Fresh	Processed
			<i>Acres</i>	<i>Tons</i>	<i>Tons</i>	<i>Tons</i>
Figs						
CA ³						
2003	13,000	3.73	48,500	48,500	2,900	45,600
2004	12,800	3.99	51,100	51,100	4,300	46,800
2005	12,300	4.14	50,900	50,900	4,700	46,200
Kiwifruit						
CA						
2003	4,500	5.64	25,400	24,000	22,000	2,000
2004	4,500	5.93	26,700	24,700	22,500	2,200
2005	4,500	8.27	37,200	36,200	34,200	2,000
Nectarines ⁴						
CA						
2003	36,500	7.48	273,000	273,000	273,000	
2004	36,500	7.37	269,000	252,000	252,000	
2005	36,500	6.55	239,000	239,000	239,000	
WA ⁵						
2003						
2004						
2005	1,200	9.58	11,500	11,500	11,500	
US						
2003	36,500	7.48	273,000	273,000	273,000	
2004	36,500	7.37	269,000	252,000	252,000	
2005	37,700	6.64	250,500	250,500	250,500	
Olives						
CA						
2003	36,000	3.28	118,000	118,000	500	117,500
2004	32,000	3.36	107,500	107,500	500	107,000
2005	32,000	4.44	142,000	142,000	500	141,500
Plums						
CA						
2003	36,000	5.81	209,000	209,000		
2004 ⁶	36,000	4.33	156,000	144,000		
2005 ⁶	36,000	4.75	171,000	171,000		

¹ Missing data not published to avoid disclosure of individual operations.

² Yield is based on total production.

³ Small quantities of canned figs are included in fresh to avoid disclosure of individual operations.

⁴ Small quantities of processed nectarines are included in fresh to avoid disclosure of individual operations.

⁵ Washington estimates began in 2005.

⁶ Small quantities of processed plums are included in fresh to avoid disclosure of individual operations.

**Miscellaneous Fruits: Price and Value by State
and United States, 2003-2005 ¹**

Crop, State, and Season	Price per Ton			Value of Production		
	Fresh <i>Dollars</i>	Processed <i>Dollars</i>	All <i>Dollars</i>	Fresh <i>1,000 Dollars</i>	Processed <i>1,000 Dollars</i>	Total <i>1,000 Dollars</i>
Figs						
CA						
2003			317.00			15,373
2004			396.00			20,214
2005			435.00			22,122
Kiwifruit						
CA						
2003			853.00			20,472
2004			809.00			19,977
2005			644.00			23,326
Nectarines ²						
CA						
2003	436.00		436.00	119,028		119,028
2004	342.00		342.00	86,184		86,184
2005	504.00		504.00	120,456		120,456
WA ³						
2003						
2004						
2005	564.00		564.00	6,486		6,486
US						
2003	436.00		436.00	119,028		119,028
2004	342.00		342.00	86,184		86,184
2005	507.00		507.00	126,942		126,942
Olives						
CA						
2003	500.00	409.00	409.00	250	48,039	48,289
2004	500.00	564.00	564.00	250	60,393	60,643
2005	500.00	560.00	560.00	250	79,261	79,511
Plums						
CA						
2003			418.00			87,362
2004 ⁴			516.00			74,347
2005 ⁴			541.00			92,463

¹ Missing data not published to avoid disclosure of individual operations.

² Small quantities of processed nectarines are included in fresh to avoid disclosure of individual operations.

³ Washington estimates began in 2005.

⁴ Small quantities of processed plums are included in fresh to avoid disclosure of individual operations.

**Miscellaneous Fruits: Bearing Acreage, Yield, Production, and Utilization
by State and United States, 2003-2005 ¹**

Crop, State, and Season	Bearing Acreage <i>Acres</i>	Yield Per Acre ² <i>Tons</i>	Production		Utilization	
			Total <i>Tons</i>	Utilized <i>Tons</i>	Fresh <i>Tons</i>	Processed <i>Tons</i>
Prunes & Plums						
ID						
2003	510	4.90	2,500	2,480		
2004	510	7.84	4,000	3,920		
2005	510	3.92	2,000	1,950		
MI						
2003	800	4.50	3,600	3,600	1,100	2,500
2004	750	3.33	2,500	2,000	350	1,650
2005	750	2.67	2,000	2,000	450	1,550
OR						
2003	1,900	2.89	5,500	4,100	1,500	2,600
2004	1,700	7.65	13,000	7,500	3,000	4,500
2005	1,500	1.00	1,500	1,500	1,200	300
WA						
2003	800	5.88	4,700	4,700		
2004	800	6.88	5,500	5,500		
2005	800	4.50	3,600	3,600		
4-State Total						
2003	4,010	4.06	16,300	14,880	7,700	7,180
2004	3,760	6.65	25,000	18,920	10,350	8,570
2005	3,560	2.56	9,100	9,050	5,500	3,550
Prunes (Dried Basis)						
CA						
2003	72,000	2.51	181,000	168,000		168,000
2004	70,000	0.70	49,000	48,000		48,000
2005	67,000	1.34	90,000	87,000		87,000

¹ Missing data not published to avoid disclosure of individual operations.

² Yield is based on total production.

**Miscellaneous Fruits: Price and Value by State
and United States, 2003-2005 ¹**

Crop, State, and Season	Price per Ton			Value of Production		
	Fresh <i>Dollars</i>	Processed <i>Dollars</i>	All <i>Dollars</i>	Fresh <i>1,000 Dollars</i>	Processed <i>1,000 Dollars</i>	Total <i>1,000 Dollars</i>
Prunes & Plums						
ID						
2003			518.00			1,284
2004			613.00			2,401
2005			999.00			1,948
MI						
2003	480.00	300.00	355.00	528	750	1,278
2004	769.00	264.00	353.00	269	436	705
2005	760.00	245.00	361.00	342	380	722
OR						
2003	385.00	206.00	272.00	578	536	1,114
2004	537.00	228.00	352.00	1,611	1,026	2,637
2005	445.00	300.00	416.00	534	90	624
WA						
2003			337.00			1,584
2004			193.00			1,059
2005			498.00			1,791
4-State Total						
2003	446.00	254.00	353.00	3,434	1,826	5,260
2004	468.00	228.00	360.00	4,847	1,955	6,802
2005	759.00	257.00	562.00	4,172	913	5,085
Prunes (Dried Basis)						
CA						
2003		772.00	772.00		129,696	129,696
2004		1,500.00	1,500.00		72,000	72,000
2005		1,500.00	1,500.00		130,500	130,500

¹ Missing data not published to avoid disclosure of individual operations.

**Miscellaneous Fruits: Processed Utilization, Use, and Price
by State and United States, 2003-2005¹**

Crop, Use, and State	Processed Utilization					
	Quantity			Price per Ton		
	2003 <i>Tons</i>	2004 <i>Tons</i>	2005 <i>Tons</i>	2003 <i>Dollars</i>	2004 <i>Dollars</i>	2005 <i>Dollars</i>
Apricots						
Canned						
CA	30,000		23,500	298.00		285.00
Juice						
CA	9,200			210.00		
Frozen						
CA	11,000	9,700		313.00	308.00	
Dried (Fresh Basis)						
CA	6,800	11,800	11,500	233.00	269.00	244.00
Figs						
Dried (Fresh Basis)						
CA	45,600	46,800	46,200	276.00	299.00	286.00
Olives						
Canned						
CA	96,000	74,400	100,000	458.00	701.00	661.00
Crushed for Oil						
CA	7,500	11,500	14,000	238.00	361.00	527.00
Limited						
CA	10,500	16,100	21,200	215.00	252.00	271.00
Undersized						
CA	3,500	5,000	6,300	8.00	6.00	6.00
Prunes & Plums						
Canned						
4-State Total	3,100	3,140	2,450	255.00	196.00	262.00
Frozen						
4-State Total	1,300	1,040	420	339.00	289.00	250.00
Dried & Other						
4-State Total	2,780	4,390	680	214.00	237.00	244.00

¹ Missing data not published to avoid disclosure of individual operations.

**Olives: Variety and Total Production, California
2003-2005**

Variety	Total Production		
	2003 <i>Tons</i>	2004 <i>Tons</i>	2005 <i>Tons</i>
Manzanillo	102,000	80,000	116,000
Sevillano	13,000	24,000	20,000
All Other ¹	3,000	3,500	6,000
Total	118,000	107,500	142,000

¹ Includes production for varieties that were or will be used for canned, oil, and other specialty products.

California Dry Fruits: Production, Use, and Price, 2003-2005

Crop	Quantity			Price per Ton		
	2003 <i>Tons</i>	2004 <i>Tons</i>	2005 <i>Tons</i>	2003 <i>Dollars</i>	2004 <i>Dollars</i>	2005 <i>Dollars</i>
Fresh Basis						
Apricots	6,800	11,800	11,500	233.00	269.00	244.00
Figs	45,600	46,800	46,200	276.00	299.00	286.00
Grapes						
Raisin	1,578,000	1,094,000	1,625,000	124.00	303.00	196.00
Table	19,000	13,000	36,000	167.00	289.00	238.00
Peaches						
Freestone	10,150	10,400	12,700	47.00	32.00	46.00
Pears						
Bartlett	4,000	4,000	2,700	206.00	160.00	240.00
Prunes	536,000	141,000	265,000	242.00	511.00	492.00
Dried Basis						
Apricots ¹	900	1,630	1,360	1,760.00	1,950.00	2,060.00
Figs ²						
Standard	13,300	13,700	13,500	938.00	1,010.00	969.00
Sub-Std.	1,900	1,900	1,900	60.00	60.00	60.00
Grapes						
Raisin ^{3 4}	347,700	274,000	338,600	563.00	1,210.00	940.00
Table ⁵	4,200	3,300	7,400	757.00	1,140.00	1,160.00
Peaches ⁶						
Freestone	1,070	870	1,160	446.00	382.00	504.00
Pears ⁷						
Bartlett	610	620	400	1,350.00	1,030.00	1,620.00
Prunes ⁸	168,000	48,000	87,000	772.00	1,500.00	1,500.00

¹ Dried basis 1 ton of dried apricots equivalent to 7.56 for 2003, 7.24 tons for 2004, and 8.46 tons for 2005.

² Dried basis 1 ton of all figs equivalent to 3.00 tons for 2003, 2004, and 2005.

³ Includes substandard raisins diverted to other uses.

⁴ Dried basis 1 ton of raisins equivalent to 4.54 tons for 2003, 3.99 tons for 2004, and 4.80 tons for 2005.

⁵ Dried basis 1 ton of table type raisins equivalent to 4.52 tons for 2003, 3.94 tons for 2004, and 4.86 tons for 2005.

⁶ Dried basis 1 ton of Freestone peaches equivalent to 9.49 tons for 2003, 11.95 tons for 2004, and 10.95 tons for 2005.

⁷ Dried basis 1 ton of Bartlett pears equivalent to 6.56 tons for 2003, 6.45 tons for 2004, and 6.75 tons for 2005.

⁸ Dried basis 1 ton of dried prunes equivalent to 3.19 tons for 2003, 2.94 tons for 2004, and 3.05 tons for 2005.

**Strawberries for Fresh Market and Processing: Area Planted and Harvested,
Yield, Production, Price, and Value by State and United States, 2003-2005**

State	Area Planted			Area Harvested		
	2003	2004	2005	2003	2004	2005
	<i>Acres</i>	<i>Acres</i>	<i>Acres</i>	<i>Acres</i>	<i>Acres</i>	<i>Acres</i>
CA	29,600	33,200	34,300	29,600	33,200	34,300
FL	7,100	7,100	7,300	7,100	7,100	7,300
MI	1,200	1,100	1,100	1,100	900	1,000
NY	1,700	1,700	1,700	1,500	1,500	1,500
NC	1,800	1,700	1,600	1,700	1,600	1,500
OH	1,000	1,000	1,100	800	800	800
OR	3,500	3,300	3,100	2,600	2,400	2,200
PA	1,300	1,300	1,300	1,300	1,300	1,300
WA	1,800	1,700	1,500	1,800	1,700	1,500
WI	1,000	1,000	900	900	900	800
US	50,000	53,100	53,900	48,400	51,400	52,200
	Yield per Acre			Production		
	2003	2004	2005	2003	2004	2005
	<i>Cwt</i>	<i>Cwt</i>	<i>Cwt</i>	<i>1,000 Cwt</i>	<i>1,000 Cwt</i>	<i>1,000 Cwt</i>
CA	645	590	600	19,092	19,588	20,580
FL	220	230	245	1,562	1,633	1,789
MI	57	46	52	63	41	52
NY	33	43	35	50	65	52
NC	100	110	130	170	176	195
OH	48	48	53	38	38	42
OR	115	135	115	295	324	250
PA	64	61	54	83	79	70
WA	90	90	100	162	153	150
WI	50	46	51	45	41	41
US	445	431	445	21,560	22,138	23,221
	Value					
	Per Cwt			Total		
	2003	2004	2005	2003	2004	2005
	<i>Dollars</i>	<i>Dollars</i>	<i>Dollars</i>	<i>1,000 Dollars</i>	<i>1,000 Dollars</i>	<i>1,000 Dollars</i>
CA	61.40	61.50	53.90	1,172,537	1,205,513	1,110,174
FL	82.70	109.00	110.00	129,177	177,997	196,790
MI	100.00	97.70	93.80	6,320	4,005	4,878
NY	155.00	160.00	155.00	7,750	10,400	8,060
NC	90.00	90.00	95.00	15,300	15,840	18,525
OH	120.00	134.00	137.00	4,560	5,092	5,754
OR	49.70	48.90	54.70	14,675	15,839	13,680
PA	134.00	164.00	183.00	11,122	12,956	12,810
WA	52.10	47.80	46.30	8,436	7,310	6,940
WI	117.00	125.00	133.00	5,265	5,125	5,453
US	63.80	66.00	59.60	1,375,142	1,460,077	1,383,064

**Berries: Harvested Acreage, Yield, Production, and Utilization
by Crop, State, and United States, 2003-2005**

Crop, State, and Year	Area Harvested <i>Acres</i>	Yield Per Acre ¹ <i>Pounds</i>	Production		Utilization	
			Total	Utilized	Fresh	Processed
			<i>1,000 Pounds</i>	<i>1,000 Pounds</i>	<i>1,000 Pounds</i>	<i>1,000 Pounds</i>
Cultivated Blueberries						
AL ²						
2003	320	1,410	600	450	450	
2004	300	1,900	980	570	570	
2005	280	1,860	750	520	520	
AR ²						
2003	550	2,820	1,650	1,550	1,550	
2004	530	3,400	1,900	1,800	1,800	
2005	530	2,550	1,500	1,350	1,350	
CA ³						
2003						
2004						
2005 ²	1,800	5,060	9,100	9,100	9,100	
FL ²						
2003	1,900	1,840	3,800	3,500	3,500	
2004	2,300	2,430	6,000	5,600	5,600	
2005	2,500	2,080	5,200	5,200	5,200	
GA						
2003	4,500	3,780	17,000	17,000	8,000	9,000
2004	4,800	4,380	21,000	21,000	10,000	11,000
2005	6,000	4,330	26,000	26,000	12,000	14,000
IN						
2003	600	3,000	1,900	1,800	1,300	500
2004	600	5,000	3,100	3,000	1,500	1,500
2005	600	5,830	3,500	3,500	2,000	1,500
MI						
2003	15,900	3,900	62,000	62,000	24,000	38,000
2004	17,400	4,600	80,000	80,000	36,000	44,000
2005	16,800	3,930	66,000	66,000	25,000	41,000
NJ						
2003	7,500	5,330	41,000	40,000	33,000	7,000
2004	7,500	5,200	39,000	39,000	33,000	6,000
2005	7,500	6,000	45,000	45,000	33,000	12,000
NY						
2003	700	2,860	2,100	2,000	1,950	50
2004	700	2,430	2,000	1,700	1,400	300
2005	700	2,000	1,500	1,400	1,350	50
NC						
2003	4,200	5,360	22,500	22,500	16,100	6,400
2004	4,400	5,200	22,900	22,900	16,400	6,500
2005	5,000	5,200	26,000	26,000	16,100	9,900
OR						
2003	3,300	7,240	23,900	23,900	10,400	13,500
2004	3,500	9,710	34,000	34,000	13,400	20,600
2005	3,800	9,080	34,500	34,500	13,800	20,700
WA						
2003	2,200	6,000	13,200	13,200	3,400	9,800
2004	2,400	7,500	18,000	18,000	5,000	13,000
2005	2,800	7,000	19,600	19,600	3,900	15,700
US						
2003	41,670	4,510	189,650	187,900	103,620	84,280
2004	44,430	5,120	228,880	227,570	124,550	103,020
2005	48,310	4,930	238,650	238,170	123,100	115,070
Wild Blueberries						
ME						
2003			80,400	80,400	400	80,000
2004			46,000	46,000	300	45,700
2005			59,550	59,550	350	59,200

¹ Yield is based on utilized production.

² Small quantities of processed blueberries are included in fresh to avoid disclosure of individual operations.

³ Estimates began in 2005.

**Berries: Price and Value by Crop, State,
and United States, 2003-2005**

Crop, State and Year	Price per Pound			Value of Production		
	Fresh	Processed	All	Fresh	Processed	Total
	<i>Dollars</i>	<i>Dollars</i>	<i>Dollars</i>	<i>1,000 Dollars</i>	<i>1,000 Dollars</i>	<i>1,000 Dollars</i>
Cultivated Blueberries						
AL ¹						
2003	1.070		1.070	482		482
2004	1.230		1.230	699		699
2005	0.906		0.906	471		471
AR ¹						
2003	1.330		1.330	2,067		2,067
2004	1.230		1.230	2,216		2,216
2005	1.740		1.740	2,349		2,349
CA ²						
2003						
2004						
2005 ¹	4.460		4.460	40,583		40,583
FL ¹						
2003	5.200		5.200	18,200		18,200
2004	4.500		4.500	25,200		25,200
2005	6.300		6.300	32,760		32,760
GA						
2003	1.640	0.630	1.110	13,120	5,670	18,790
2004	1.640	0.670	1.130	16,400	7,370	23,770
2005	1.730	0.790	1.220	20,760	11,060	31,820
IN						
2003	1.320	0.780	1.170	1,716	390	2,106
2004	1.330	0.850	1.090	1,995	1,275	3,270
2005	1.410	0.970	1.220	2,820	1,455	4,275
MI						
2003	1.300	0.840	1.020	31,200	31,905	63,105
2004	1.600	0.900	1.220	57,600	39,610	97,210
2005	1.700	1.000	1.270	42,500	41,000	83,500
NJ						
2003	1.200	0.870	1.140	39,600	6,090	45,690
2004	1.210	0.950	1.170	39,930	5,700	45,630
2005	1.310	1.020	1.230	43,230	12,240	55,470
NY						
2003	1.300	0.860	1.290	2,535	43	2,578
2004	1.450	0.950	1.360	2,030	285	2,315
2005	1.420	0.920	1.400	1,917	46	1,963
NC						
2003	1.850	0.780	1.550	29,785	4,992	34,777
2004	1.700	0.670	1.410	27,880	4,355	32,235
2005	1.800	0.780	1.410	28,980	7,722	36,702
OR						
2003	1.090	0.700	0.870	11,336	9,450	20,786
2004	0.970	0.700	0.806	12,998	14,420	27,418
2005	1.210	0.800	0.964	16,698	16,560	33,258
WA						
2003	1.330	0.770	0.914	4,522	7,546	12,068
2004	1.250	0.750	0.889	6,250	9,750	16,000
2005	1.330	0.890	0.978	5,187	13,973	19,160
US						
2003	1.490	0.784	1.170	154,533	66,116	220,649
2004	1.550	0.805	1.210	193,058	82,905	275,963
2005	1.930	0.910	1.440	237,595	104,716	342,311
Wild Blueberries						
ME						
2003	1.200	0.330	0.334	480	26,400	26,880
2004	1.350	0.450	0.456	405	20,565	20,970
2005	1.600	0.650	0.656	560	38,480	39,040

¹ Small quantities of processed blueberries are included in fresh to avoid disclosure of individual operations.

² Estimates began in 2005.

**Berries: Harvested Acreage, Yield, Production, and Utilization
by Crop, State, and United States, 2003-2005**

Crop, State, and Year	Area Harvested <i>Acres</i>	Yield Per Acre ¹ <i>Pounds</i>	Production		Utilization	
			Total	Utilized	Fresh	Processed
			<i>1,000 Pounds</i>	<i>1,000 Pounds</i>	<i>1,000 Pounds</i>	<i>1,000 Pounds</i>
Boysenberries						
CA ²						
2003	200	6,000	1,200	1,200		
2004	300	10,000	3,000	3,000		
2005	310	9,030	2,800	2,800		
OR						
2003	800	3,880	3,100	3,100	200	2,900
2004	750	4,270	3,200	3,200	200	3,000
2005	600	3,830	2,330	2,300	200	2,100
US ²						
2003	1,000	4,300	4,300	4,300		
2004	1,050	5,900	6,200	6,200		
2005	910	5,600	5,130	5,100		
Loganberries						
OR						
2003	70	2,710	190	190	70	120
2004	60	2,830	180	170	20	150
2005	60	3,670	290	220	20	200
Black Raspberries						
OR						
2003	1,100	2,090	2,400	2,300	10	2,290
2004	1,100	2,160	2,380	2,380	10	2,370
2005	1,300	3,260	4,240	4,240	20	4,220
Red Raspberries						
OR						
2003	2,000	2,600	5,200	5,200	1,000	4,200
2004	1,900	3,530	6,700	6,700	1,100	5,600
2005	1,900	3,790	7,200	7,200	1,300	5,900
WA						
2003	9,200	7,300	67,700	67,200	1,400	65,800
2004	9,000	6,600	59,400	59,400	1,500	57,900
2005	9,500	7,400	70,300	70,300	1,400	68,900
US						
2003	11,200	6,460	72,900	72,400	2,400	70,000
2004	10,900	6,060	66,100	66,100	2,600	63,500
2005	11,400	6,800	77,500	77,500	2,700	74,800
All Raspberries						
CA ²						
2003	3,000	20,500	61,500	61,500		
2004	4,100	22,000	90,000	90,000		
2005	4,200	19,600	82,500	82,500		

¹ Yield is based on utilized production.

² No breakdown of utilization available.

**Berries: Price and Value by Crop, State,
and United States, 2003-2005**

Crop, State, and Year	Price per Pound			Value of Production		
	Fresh <i>Dollars</i>	Processed <i>Dollars</i>	All <i>Dollars</i>	Fresh <i>1,000 Dollars</i>	Processed <i>1,000 Dollars</i>	Total <i>1,000 Dollars</i>
Boysenberries						
CA ¹						
2003			0.891			1,069
2004			1.200			3,600
2005			1.330			3,724
OR						
2003	1.390	0.820	0.857	278	2,378	2,656
2004	1.490	1.090	1.120	298	3,270	3,568
2005	1.630	1.480	1.490	326	3,108	3,434
US ¹						
2003			0.866			3,725
2004			1.160			7,168
2005			1.400			7,158
Loganberries						
OR						
2003	1.330	0.800	0.990	93	96	189
2004	1.140	0.720	0.771	23	108	131
2005	1.420	0.800	0.855	28	160	188
Black Raspberries						
OR						
2003	1.820	1.360	1.360	18	3,114	3,132
2004	2.430	2.250	2.250	24	5,333	5,357
2005	1.870	2.460	2.460	37	10,381	10,418
Red Raspberries						
OR						
2003	1.280	0.700	0.812	1,280	2,940	4,220
2004	1.370	0.760	0.860	1,507	4,256	5,763
2005	1.550	0.660	0.821	2,015	3,894	5,909
WA						
2003	1.670	0.520	0.544	2,338	34,216	36,554
2004	1.690	0.750	0.774	2,535	43,425	45,960
2005	1.970	0.530	0.559	2,758	36,517	39,275
US						
2003	1.510	0.531	0.563	3,618	37,156	40,774
2004	1.550	0.751	0.782	4,042	47,681	51,723
2005	1.770	0.540	0.583	4,773	40,411	45,184
All Raspberries						
CA ¹						
2003			2.080			127,920
2004			2.090			188,100
2005			1.990			164,175

¹ No breakdown of utilization available.

Oregon Blackberries: Harvested Acreage, Yield, Production, and Utilization by Variety, 2003-2005

Variety and Year	Area Harvested <i>Acres</i>	Yield Per Acre ¹ <i>Pounds</i>	Production		Utilization	
			Total	Utilized	Fresh	Processed
			<i>1,000 Pounds</i>	<i>1,000 Pounds</i>	<i>1,000 Pounds</i>	<i>1,000 Pounds</i>
Cultivated Blackberries (OR)						
Marion						
2003	4,400	6,270	28,000	27,600	400	27,200
2004	4,300	6,580	28,300	28,300	300	28,000
2005	4,300	6,140	26,800	26,400	400	26,000
Evergreen						
2003	1,000	6,300	6,400	6,300	200	6,100
2004	900	6,440	5,800	5,800	300	5,500
2005	900	6,330	5,700	5,700	300	5,400
Other						
2003	1,000	7,800	7,900	7,800	1,500	6,300
2004	1,100	12,500	13,800	13,800	1,000	12,800
2005	1,300	12,500	16,400	16,300	1,500	14,800
All						
2003	6,400	6,520	42,300	41,700	2,100	39,600
2004	6,300	7,600	47,900	47,900	1,600	46,300
2005	6,500	7,450	48,900	48,400	2,200	46,200

¹ Yield is based on utilized production.

Oregon Blackberries: Price and Value by Variety, 2003-2005

Variety and Year	Price per Pound			Value of Production		
	Fresh <i>Dollars</i>	Processed <i>Dollars</i>	All <i>Dollars</i>	Fresh <i>1,000 Dollars</i>	Processed <i>1,000 Dollars</i>	Total <i>1,000 Dollars</i>
Cultivated Blackberries (OR)						
Marion						
2003	1.160	0.680	0.687	464	18,496	18,960
2004	1.220	0.740	0.745	366	20,720	21,086
2005	1.360	0.710	0.720	544	18,460	19,004
Evergreen						
2003	0.990	0.690	0.700	198	4,209	4,407
2004	1.020	0.590	0.612	306	3,245	3,551
2005	1.260	0.680	0.711	378	3,672	4,050
Other						
2003	1.100	0.630	0.720	1,650	3,969	5,619
2004	1.100	0.650	0.683	1,100	8,320	9,420
2005	1.710	0.760	0.847	2,565	11,248	13,813
All						
2003	1.100	0.674	0.695	2,312	26,674	28,986
2004	1.110	0.697	0.711	1,772	32,285	34,057
2005	1.590	0.723	0.762	3,487	33,380	36,867

**Sweet Cherries: Bearing Acreage, Yield, Production, and Utilization
by State and United States, 2003-2005 ¹**

State and Year	Bearing Acreage <i>Acres</i>	Yield Per Acre ² <i>Tons</i>	Production		Utilization	
			Total	Utilized	Fresh	Processed
			<i>Tons</i>	<i>Tons</i>	<i>Tons</i>	<i>Tons</i>
CA						
2003	25,000	2.62	65,600	63,900	51,600	12,300
2004	26,000	2.81	73,000	70,300	57,700	12,600
2005	27,000	1.95	52,700	48,600	35,600	13,000
ID						
2003			2,900	2,900		
2004			3,100	3,100		
2005	720	2.36	1,700	1,700		
MI						
2003	8,100	1.60	13,000	13,000	500	12,500
2004	8,100	3.05	24,700	24,700	500	24,200
2005	8,200	3.29	27,000	27,000	600	26,400
MT						
2003			2,060	1,850		
2004			2,360	2,220		
2005	740	1.66	1,230	1,180		
NY						
2003	700	0.86	600	590		
2004	700	1.29	900	890		
2005	700	1.14	800	740		
OR						
2003	12,000	3.42	41,000	41,000	22,000	19,000
2004	12,000	3.58	43,000	42,000	22,000	20,000
2005	12,000	2.38	28,600	25,600	14,000	11,600
PA						
2003			340	340	340	
2004			400	350	350	
2005 ³						
UT						
2003	650	3.38	2,200	2,000	1,000	1,000
2004	650	2.46	1,600	1,600	850	750
2005	650	2.77	1,800	1,750	980	770
WA						
2003	27,000	4.37	118,000	118,000	96,000	22,000
2004	29,000	4.62	134,000	134,000	99,000	35,000
2005	29,000	4.72	137,000	137,000	113,000	24,000
US						
2003	74,990	3.28	245,700	243,580	175,570	68,010
2004	78,275	3.62	283,060	279,160	185,050	94,110
2005	79,010	3.17	250,830	243,570	167,190	76,380

¹ Missing data not published to avoid disclosure of individual operations.

² Yield is based on total production.

³ Estimates discontinued in 2005.

**Sweet Cherries: Price and Value by State
and United States, 2003-2005¹**

State and Year	Price per Ton			Value of Production		
	Fresh <i>Dollars</i>	Processed <i>Dollars</i>	All <i>Dollars</i>	Fresh <i>1,000 Dollars</i>	Processed <i>1,000 Dollars</i>	All <i>1,000 Dollars</i>
CA						
2003	1,980.00	383.00	1,670.00	102,168	4,715	106,883
2004	2,020.00	524.00	1,750.00	116,554	6,602	123,156
2005	2,210.00	467.00	1,740.00	78,676	6,075	84,751
ID						
2003			1,400.00			4,056
2004			1,390.00			4,323
2005			1,950.00			3,313
MI						
2003	2,230.00	774.00	830.00	1,115	9,680	10,795
2004	2,020.00	632.00	660.00	1,010	15,301	16,311
2005	1,770.00	594.00	620.00	1,062	15,670	16,732
MT						
2003			1,710.00			3,163
2004			2,010.00			4,473
2005			3,530.00			4,165
NY						
2003			1,770.00			1,046
2004			1,400.00			1,245
2005			1,710.00			1,267
OR						
2003	1,320.00	811.00	1,080.00	29,040	15,410	44,450
2004	1,470.00	802.00	1,150.00	32,340	16,040	48,380
2005	1,930.00	876.00	1,450.00	27,020	10,166	37,186
PA						
2003	2,360.00		2,360.00	802		802
2004	2,980.00		2,980.00	1,043		1,043
2005 ²						
UT						
2003	1,200.00	600.00	900.00	1,200	600	1,800
2004	1,450.00	480.00	996.00	1,233	360	1,593
2005	2,000.00	600.00	1,380.00	1,960	462	2,422
WA						
2003	1,640.00	531.00	1,430.00	157,440	11,678	169,118
2004	2,220.00	481.00	1,770.00	219,780	16,829	236,609
2005	2,830.00	613.00	2,440.00	319,790	14,722	334,512
US						
2003	1,700.00	631.00	1,400.00	299,209	42,904	342,113
2004	2,060.00	597.00	1,570.00	380,972	56,161	437,133
2005	2,610.00	620.00	1,990.00	436,992	47,356	484,348

¹ Missing data not published to avoid disclosure of individual operations.

² Estimates discontinued in 2005.

**Tart Cherries: Bearing Acreage, Yield, Production, and Utilization
by State and United States, 2003-2005 ¹**

State and Year	Bearing Acreage <i>Acres</i>	Yield Per Acre ² <i>Pounds</i>	Production		Utilization	
			Total	Utilized	Fresh	Processed
			<i>Million Pounds</i>	<i>Million Pounds</i>	<i>Million Pounds</i>	<i>Million Pounds</i>
CO						
2003			0.4	0.4		
2004			0.2	0.2		
2005 ³						
MI						
2003	27,000	5,700	154.0	154.0	0.5	153.5
2004	27,000	5,520	149.0	149.0	0.5	148.5
2005	27,300	7,620	208.0	208.0	0.5	207.5
NY						
2003	2,000	3,600	7.2	7.2		
2004	2,000	5,350	10.7	10.7		
2005	2,000	3,750	7.5	7.5		
OR						
2003	800	1,750	1.4	1.4		
2004	800	4,880	3.9	3.9		
2005	750	400	0.3	0.3		
PA						
2003	800	4,880	3.9	3.9		
2004	800	3,750	3.0	3.0		
2005	800	3,250	2.6	2.6		
UT						
2003	2,800	9,290	26.0	26.0		26.0
2004	2,800	7,860	22.0	22.0		22.0
2005	2,800	10,000	28.0	26.0		26.0
WA						
2003			20.1	20.1		
2004			17.5	17.5		
2005	1,600	10,300	16.5	16.5		
WI						
2003	1,900	7,000	13.3	13.3	0.2	13.1
2004	1,900	3,530	6.7	6.7	0.1	6.6
2005	1,800	4,170	7.5	7.5	0.1	7.4
US						
2003	36,970	6,120	226.3	226.3	1.0	225.3
2004	36,950	5,760	213.0	213.0	1.3	211.7
2005	37,050	7,300	270.4	268.4	1.2	267.2

¹ Missing data not published to avoid disclosure of individual operations.

² Yield is based on total production.

³ Estimates discontinued in 2005.

**Tart Cherries: Price and Value by State
and United States, 2003-2005 ¹**

State and Year	Price per Pound			Value of Production		
	Fresh <i>Dollars</i>	Processed <i>Dollars</i>	All <i>Dollars</i>	Fresh <i>1,000 Dollars</i>	Processed <i>1,000 Dollars</i>	All <i>1,000 Dollars</i>
CO						
2003			0.380			152
2004			0.210			42
2005 ²						
MI						
2003	0.750	0.375	0.376	375	57,563	57,938
2004	0.800	0.333	0.335	400	49,461	49,861
2005	0.500	0.228	0.229	250	47,305	47,555
NY						
2003			0.314			2,262
2004			0.409			4,381
2005			0.432			3,243
OR						
2003			0.361			505
2004			0.369			1,439
2005			0.380			114
PA						
2003			0.434			1,694
2004			0.353			1,060
2005			0.315			819
UT						
2003		0.228	0.228		5,928	5,928
2004		0.238	0.238		5,236	5,236
2005		0.233	0.233		6,058	6,058
WA						
2003			0.323			6,492
2004			0.309			5,409
2005			0.239			3,951
WI						
2003	0.550	0.392	0.394	110	5,129	5,239
2004	0.710	0.370	0.375	71	2,442	2,513
2005	0.500	0.330	0.332	50	2,442	2,492
US						
2003	0.744	0.353	0.354	744	79,466	80,210
2004	0.915	0.325	0.328	1,190	68,751	69,941
2005	0.893	0.236	0.239	1,071	63,161	64,232

¹ Missing data not published to avoid disclosure of individual operations.

² Estimates discontinued in 2005.

**Sweet and Tart Cherries: Processed Utilization, Use,
and Price by State and United States, 2003-2005**

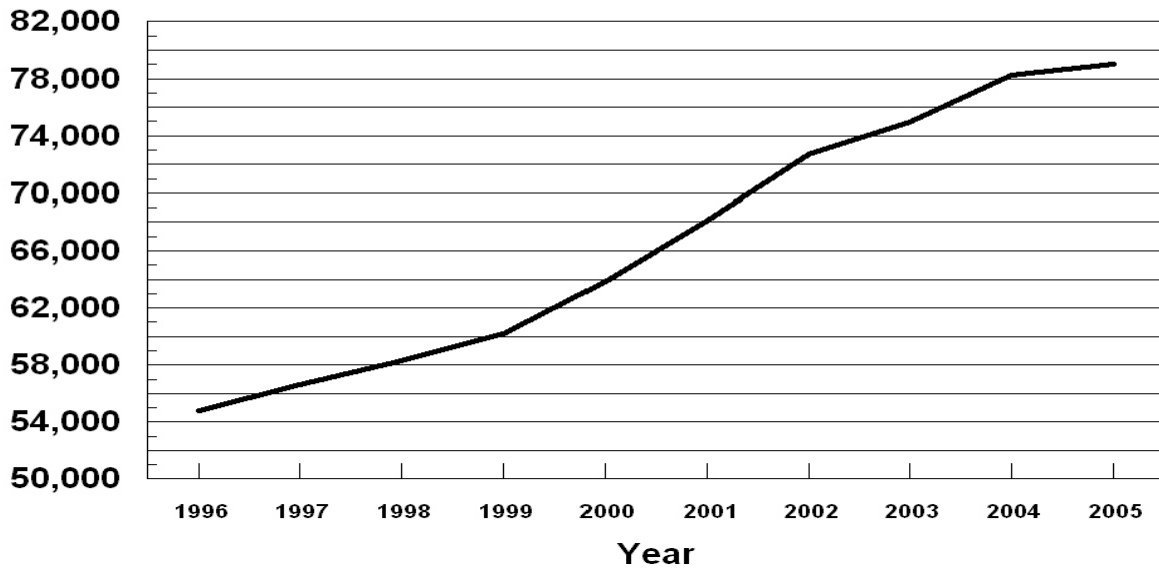
Crop, Use, and State	Processed Utilization					
	Quantity			Price per Unit		
	2003 <i>Tons</i>	2004 <i>Tons</i>	2005 <i>Tons</i>	2003 <i>Dollars per Ton</i>	2004 <i>Dollars per Ton</i>	2005 <i>Dollars per Ton</i>
Sweet Cherries						
Canned						
MI	1,500	2,870	4,350	920.00	640.00	630.00
OR	2,000	2,000	1,300	1,100.00	1,100.00	1,060.00
WA	5,500	4,500	4,000	810.00	798.00	810.00
US	9,000	9,370	9,650	893.00	814.00	763.00
Brined						
MI	8,000	18,100	17,800	675.00	617.00	550.00
OR	14,000	14,000	8,000	770.00	740.00	880.00
WA	10,000	18,000	13,000	420.00	541.00	719.00
Oth Sts	10,050	10,630	7,530	534.00	686.00	779.00
US	42,050	60,730	46,330	612.00	635.00	692.00
Other ¹						
MI	3,000	3,230	4,250	967.00	711.00	739.00
OR	3,000	4,000	2,300	810.00	870.00	760.00
WA	6,500	12,500	7,000	465.00	280.00	305.00
Oth Sts	4,460	4,280	6,850	170.00	159.00	137.00
US	16,960	24,010	20,400	537.00	415.00	390.00
	<i>Million Pounds</i>	<i>Million Pounds</i>	<i>Million Pounds</i>	<i>Dollars per Pound</i>	<i>Dollars per Pound</i>	<i>Dollars per Pound</i>
Tart Cherries						
Canned						
MI	53.0	39.5	51.0	0.390	0.340	0.240
Oth Sts	7.9	7.1	6.9	0.376	0.351	0.315
US	60.9	46.6	57.9	0.388	0.342	0.249
Frozen						
MI	95.0	103.0	146.0	0.370	0.340	0.230
Oth Sts	53.7	47.1	41.9	0.308	0.312	0.262
US	148.7	150.1	187.9	0.348	0.331	0.237
Other ²						
MI	5.5	6.0	10.5	0.317	0.169	0.141
Oth Sts	10.2	9.0	10.9	0.234	0.232	0.245
US	15.7	15.0	21.4	0.263	0.207	0.194

¹ Includes California canned utilization, and other processed utilizations (frozen, juice, etc.) from all States.

² Juice, wine, brined, and dried.

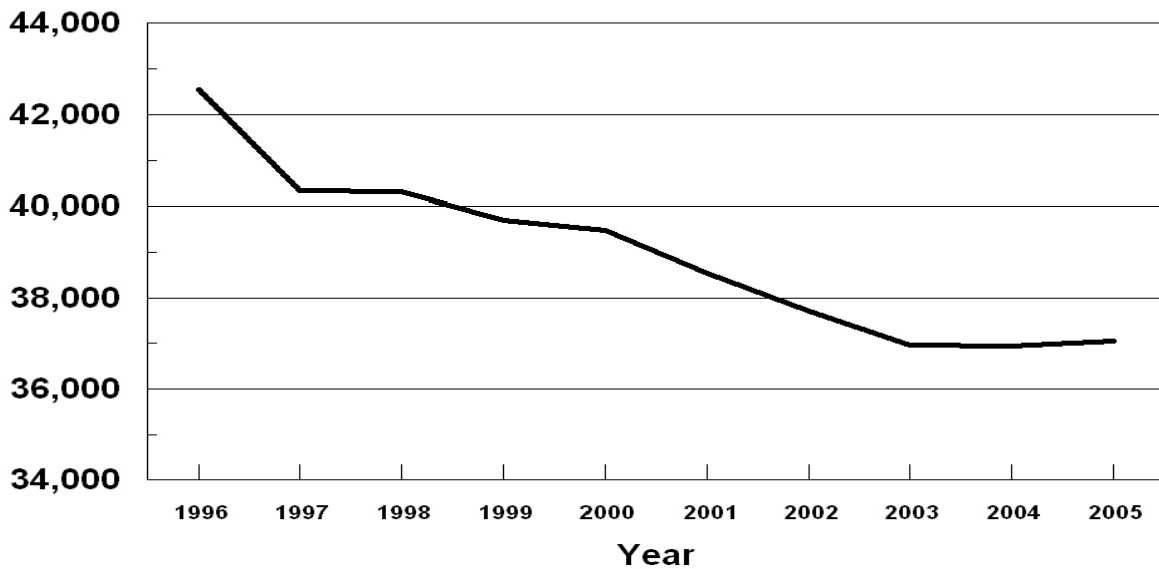
U. S. Sweet Cherries

Bearing Acres
1996 - 2005



U. S. Tart Cherries

Bearing Acres
1996 - 2005



**Cranberries: Area Harvested, Yield, Production and Utilization
by State and United States, 2003-2005**

Year and State	Area Harvested	Yield per Acre ¹	Production		Utilization	
			Total	Utilized	Fresh	Processed
	<i>Acres</i>	<i>Barrels</i> ²	<i>Barrels</i> ²	<i>Barrels</i> ²		
2003						
MA	14,400	97.6	1,406,000	1,406,000	107,000	1,299,000
NJ ³	3,200	150.0	480,000	480,000		480,000
OR	2,900	175.9	510,000	510,000	9,000	501,000
WA	1,700	111.8	190,000	190,000	30,000	160,000
WI	17,400	207.3	3,607,000	3,607,000	205,000	3,402,000
US	39,600	156.4	6,193,000	6,193,000	351,000	5,842,000
2004						
MA	14,100	128.2	1,808,000	1,808,000	152,000	1,656,000
NJ ³	3,100	129.7	402,000	394,000		394,000
OR	2,900	170.7	495,000	495,000	10,000	485,000
WA	1,700	100.0	170,000	170,000	30,000	140,000
WI	17,400	189.7	3,300,000	3,300,000	205,000	3,095,000
US	39,200	157.5	6,175,000	6,167,000	397,000	5,770,000
2005						
MA	14,200	100.2	1,423,000	1,423,000	124,000	1,299,000
NJ ³	3,100	171.9	533,000	533,000		533,000
OR	2,700	163.0	440,000	440,000	20,000	420,000
WA	1,700	110.0	187,000	187,000	18,000	169,000
WI	17,400	210.3	3,660,000	3,660,000	200,000	3,460,000
US	39,100	159.7	6,243,000	6,243,000	362,000	5,881,000

¹ Yield is based on total production.

² A barrel weighs 100 pounds.

³ Small quantities of fresh cranberries are included in processed to avoid disclosure of individual operations.

**Cranberries: Utilization, Price, and Value
by State and United States, 2003-2005**

Year and State	Price per Barrel ^{1 2}			Value of Utilized Production		
	Fresh <i>Dollars</i>	Processed <i>Dollars</i>	All <i>Dollars</i>	Fresh <i>1,000 Dollars</i>	Processed <i>1,000 Dollars</i>	All <i>1,000 Dollars</i>
2003						
MA	56.30	32.30	34.10	6,024	41,958	47,982
NJ ³		31.90	31.90		15,312	15,312
OR	55.80	33.70	34.10	502	16,884	17,386
WA	52.90	31.90	35.20	1,587	5,104	6,691
WI	51.40	32.90	34.00	10,537	111,926	122,463
US	53.10	32.70	33.90	18,650	191,184	209,834
2004						
MA	54.80	30.60	32.60	8,330	50,674	59,004
NJ ³		31.20	31.20		12,293	12,293
OR	55.30	32.60	33.10	553	15,811	16,364
WA	55.30	31.40	35.60	1,659	4,396	6,055
WI	54.40	31.60	33.00	11,152	97,802	108,954
US	54.60	31.40	32.90	21,694	180,976	202,670
2005						
MA	56.10	32.90	34.90	6,956	42,737	49,693
NJ ³		34.00	34.00		18,122	18,122
OR	48.70	34.40	35.10	974	14,448	15,422
WA	56.30	34.40	36.50	1,013	5,814	6,827
WI	56.30	32.80	34.10	11,260	113,488	124,748
US	55.80	33.10	34.40	20,203	194,609	214,812

¹ Weighted average of co-op and independent sales. Co-op prices represent pool proceeds less returns for processing non-cranberry products, capital stock dividends, capital stock retains, and other retains.

² A barrel weighs 100 pounds.

³ Small quantities of fresh cranberries are included in processed to avoid disclosure of individual operations.

**Grapes: Bearing Acreage and Yield by Type,
State, and United States, 2003-2005**

State and Type	Bearing Acreage			Yield per Acre ¹		
	2003	2004	2005	2003	2004	2005
	<i>Acres</i>	<i>Acres</i>	<i>Acres</i>	<i>Tons</i>	<i>Tons</i>	<i>Tons</i>
AZ	2,100	1,000	400	3.81	4.00	2.50
AR	1,100	900	750	2.18	3.33	2.53
CA						
All Types	819,000	800,000	800,000	7.16	7.03	8.72
Wine	479,000	473,000	477,000	6.07	5.95	7.98
Table	85,000	83,000	83,000	8.61	9.28	10.40
Raisin	255,000	244,000	240,000	8.71	8.35	9.61
GA	1,100	1,100	1,100	2.82	3.00	3.18
MI	13,200	13,900	14,200	7.16	4.50	7.23
MO	960	1,100	1,200	3.16	3.30	3.25
NY	31,000	31,000	31,000	6.39	4.58	5.74
NC	950	1,100	1,300	2.95	3.18	3.00
OH	2,100	2,100	2,200	3.86	2.29	3.86
OR	10,700	11,100	11,800	2.24	2.16	2.29
PA	12,000	12,000	12,000	7.08	7.23	7.50
TX	2,900	2,900	2,900	2.07	3.03	3.34
VA	1,900	1,900	2,000	1.89	1.95	2.80
WA						
All Types	52,000	53,000	54,000	6.62	5.04	7.69
Wine	27,000	27,000	28,000	4.15	3.96	3.93
Juice	25,000	26,000	26,000	9.28	6.15	11.70
US	951,010	933,100	934,850	6.99	6.69	8.37

¹ Yield is based on total production.

**Grapes: Total and Utilized Production, Price, and Value
by Type, State, and United States, 2003-2005**

State and Type	Total Production			Utilized Production		
	2003	2004	2005	2003	2004	2005
	<i>Tons</i>	<i>Tons</i>	<i>Tons</i>	<i>Tons</i>	<i>Tons</i>	<i>Tons</i>
AZ	8,000	4,000	1,000	8,000	4,000	1,000
AR	2,400	3,000	1,900	2,300	2,700	1,900
CA						
All Types	5,861,000	5,623,000	6,978,000	5,786,000	5,623,000	6,978,000
Wine	2,909,000	2,815,000	3,805,000	2,909,000	2,815,000	3,805,000
Table ¹	732,000	770,000	867,000	678,000	770,000	867,000
Raisin ¹	2,220,000	2,038,000	2,306,000	2,199,000	2,038,000	2,306,000
GA	3,100	3,300	3,500	2,800	3,200	3,500
MI	94,500	62,500	102,700	80,500	58,000	102,700
MO	3,030	3,630	3,900	3,030	3,630	3,900
NY	198,000	142,000	178,000	152,000	142,000	178,000
NC	2,800	3,500	3,900	2,800	3,500	3,900
OH	8,100	4,800	8,500	7,000	4,800	8,500
OR	24,000	24,000	27,000	24,000	19,400	25,000
PA	85,000	86,800	90,000	68,000	86,800	90,000
TX	6,000	8,800	9,700	5,800	8,500	8,500
VA	3,600	3,700	5,600	3,400	3,400	5,600
WA						
All Types	344,000	267,000	415,000	344,000	267,000	415,000
Wine	112,000	107,000	110,000	112,000	107,000	110,000
Juice	232,000	160,000	305,000	232,000	160,000	305,000
US	6,643,530	6,240,030	7,828,700	6,489,630	6,229,930	7,825,500
	Price per Ton			Value of Utilized Production		
	2003	2004	2005	2003	2004	2005
	<i>Dollars</i>	<i>Dollars</i>	<i>Dollars</i>	<i>1,000 Dollars</i>	<i>1,000 Dollars</i>	<i>1,000 Dollars</i>
AZ	1,030.00	334.00	550.00	8,204	1,335	550
AR	485.00	502.00	539.00	1,115	1,355	1,024
CA						
All Types	402.00	492.00	454.00	2,324,650	2,764,534	3,165,715
Wine	530.00	570.00	582.00	1,542,876	1,604,925	2,214,665
Table ¹	601.00	695.00	443.00	407,607	535,009	383,910
Raisin ¹	170.00	306.00	246.00	374,167	624,600	567,140
GA	978.00	1,160.00	1,390.00	2,738	3,724	4,850
MI	262.00	242.00	212.00	21,086	14,015	21,810
MO	610.00	720.00	774.00	1,849	2,612	3,017
NY	252.00	229.00	193.00	38,253	32,536	34,290
NC	1,070.00	962.00	937.00	2,989	3,366	3,653
OH	350.00	417.00	318.00	2,448	2,000	2,699
OR	1,510.00	1,660.00	1,680.00	36,240	32,204	42,000
PA	231.00	221.00	218.00	15,741	19,190	19,608
TX	900.00	919.00	1,250.00	5,220	7,812	10,625
VA	1,300.00	1,300.00	1,360.00	4,420	4,420	7,616
WA						
All Types	420.00	456.00	342.00	144,336	121,855	141,950
Wine	920.00	925.00	930.00	103,040	98,975	102,300
Juice ²	178.00	143.00		41,296	22,880	
US	402.00	483.00	442.00	2,609,289	3,010,958	3,459,407

¹ Fresh equivalent of dried and not dried.

² Official estimates of price and value for 2005 are not published.

**Grapes: Fresh and Processed Utilization, and Price
by Type, State and United States, 2003-2005**

Utilization, State, and Type	Fresh and Processed Utilization					
	Quantity			Price per Ton		
	2003 <i>Tons</i>	2004 <i>Tons</i>	2005 <i>Tons</i>	2003 <i>Dollars</i>	2004 <i>Dollars</i>	2005 <i>Dollars</i>
Fresh						
CA						
All Types ¹	792,000	876,000	988,000	683.00	764.00	567.00
Wine	45,000	40,000	50,000	300.00	510.00	510.00
Table	575,000	644,000	725,000	690.00	790.00	500.00
Raisin ¹	172,000	192,000	213,000	760.00	730.00	808.00
MI	500	500	700	800.00	800.00	800.00
MO	60	80	60	620.00	710.00	740.00
NY	3,000	2,000	3,000	714.00	678.00	680.00
NC	300	200	200	1,630.00	1,650.00	1,800.00
OH	100	100	100	580.00	1,040.00	820.00
PA	1,000	500	500	744.00	650.00	670.00
Oth Sts	8,500	3,200	2,810	1,190.00	1,080.00	1,420.00
US ¹	805,460	882,580	995,370	689.00	765.00	570.00
Processed						
CA						
All Types	4,994,000	4,747,000	5,990,000	357.00	441.00	435.00
Wine	2,864,000	2,775,000	3,755,000	534.00	571.00	583.00
Table	103,000	126,000	142,000	105.00	208.00	151.00
Raisin	2,027,000	1,846,000	2,093,000	120.00	262.00	189.00
MI	80,000	57,500	102,000	259.00	237.00	208.00
MO	2,970	3,550	3,840	610.00	720.00	774.00
NY	149,000	140,000	175,000	242.00	223.00	184.00
NC	2,500	3,300	3,700	1,000.00	920.00	890.00
OH	6,900	4,700	8,400	346.00	403.00	312.00
OR ²	24,000	19,400	25,000	1,510.00	1,660.00	1,680.00
PA	67,000	86,300	89,500	224.00	219.00	215.00
TX ²	5,800	8,500	8,500	900.00	919.00	1,250.00
VA	3,400	3,400	5,600	1,300.00	1,300.00	1,360.00
WA						
All Types	344,000	267,000	415,000	420.00	456.00	342.00
Wine	112,000	107,000	110,000	920.00	925.00	930.00
Juice ³	232,000	160,000	305,000	178.00	143.00	
Oth Sts	4,600	6,700	3,590	419.00	441.00	676.00
US	5,684,170	5,347,350	6,830,130	361.00	437.00	423.00

¹ Grapes canned are included in 2005 to avoid disclosure of individual operations.

² Includes small quantities sold fresh.

³ Official estimates of price for 2005 is not published.

**Grapes: Fresh and Processed Value by Type,
State and United States, 2003-2005**

Utilization, State, and Type	Fresh and Processed Utilization		
	Value of Utilized Production		
	2003 <i>1,000 Dollars</i>	2004 <i>1,000 Dollars</i>	2005 <i>1,000 Dollars</i>
Fresh			
CA			
All Types ¹	540,970	669,320	560,104
Wine	13,500	20,400	25,500
Table	396,750	508,760	362,500
Raisin ¹	130,720	140,160	172,104
MI	400	400	560
MO	37	57	44
NY	2,142	1,356	2,040
NC	489	330	360
OH	58	104	82
PA	744	325	335
Oth Sts	10,128	3,456	3,998
US ¹	554,968	675,348	567,523
Processed			
CA			
All Types	1,783,680	2,095,214	2,605,611
Wine	1,529,376	1,584,525	2,189,165
Table	10,857	26,249	21,410
Raisin	243,447	484,440	395,036
MI	20,686	13,615	21,250
MO	1,812	2,555	2,973
NY	36,111	31,180	32,250
NC	2,500	3,036	3,293
OH	2,390	1,896	2,617
OR ²	36,240	32,204	42,000
PA	14,997	18,865	19,273
TX ²	5,220	7,812	10,625
VA	4,420	4,420	7,616
WA			
All Types	144,336	121,855	141,950
Wine	103,040	98,975	102,300
Juice ³	41,296	22,880	
Oth Sts	1,929	2,958	2,426
US	2,054,321	2,335,610	2,891,884

¹ Grapes canned are included in 2005 to avoid disclosure of individual operations.

² Includes small quantities sold fresh.

³ Official estimate of value for 2005 is not published.

**Grapes: Processed Utilization, Use, and Price
by Type, State and United States, 2003-2005**

Use and State	Processed Utilization					
	Quantity			Price per Ton		
	2003 <i>Tons</i>	2004 <i>Tons</i>	2005 <i>Tons</i>	2003 <i>Dollars</i>	2004 <i>Dollars</i>	2005 <i>Dollars</i>
Canned ¹						
CA						
Raisin	27,000	25,000		280.00	300.00	
Juice ^{2 3 4}						
MI	78,000	54,300	97,400	242.00	198.00	
NY	106,000	103,000	135,000	221.00	191.00	
OH	5,400	3,200	7,000	252.00	198.00	
PA	56,500	73,000	73,200	216.00	185.00	
WA	232,000	160,000	305,000	178.00	143.00	
Oth Sts	850	3,720	310	319.00	290.00	
US	478,750	397,220	617,910	204.00	173.00	
Wine						
CA						
All Types	3,370,000	3,615,000	4,329,000	468.00	485.00	526.00
Wine	2,864,000	2,775,000	3,755,000	534.00	571.00	583.00
Table	84,000	113,000	106,000	91.40	199.00	121.00
Raisin	422,000	727,000	468,000	95.10	200.00	164.00
MI	2,000	3,200	4,600	905.00	895.00	1,020.00
MO	2,920	3,530	3,830	610.00	720.00	775.00
NY	43,000	37,000	40,000	295.00	311.00	219.00
NC	2,500	3,300	3,700	1,000.00	920.00	890.00
OH	1,500	1,500	1,400	686.00	841.00	959.00
OR ³	24,000	19,400	25,000	1,510.00	1,660.00	1,680.00
PA	10,500	13,300	16,300	266.00	403.00	410.00
TX ³	5,800	8,500	8,500	900.00	919.00	1,250.00
VA	3,400	3,400	5,600	1,300.00	1,300.00	1,360.00
WA	112,000	107,000	110,000	920.00	925.00	930.00
Oth Sts ⁵	3,800	3,000	3,290	444.00	631.00	692.00
US	3,581,420	3,818,130	4,551,220	489.00	504.00	543.00
Dried (Fr Basis)						
CA						
All Types	1,597,000	1,107,000	1,661,000	125.00	303.00	197.00
Table	19,000	13,000	36,000	167.00	289.00	238.00
Raisin	1,578,000	1,094,000	1,625,000	124.00	303.00	196.00

¹ Grapes canned are included with fresh in 2005 to avoid disclosure of individual operations.

² Includes small quantities of other processed (jam, jelly, etc.).

³ Includes small quantities for other uses.

⁴ Official estimates of prices for 2005 are not published.

⁵ AZ grapes dried for raisins in 2003 are included to avoid disclosure of individual operations. No AZ grapes dried for raisins in 2004 or 2005.

**Concord Grapes: Processed Utilization by State
and United States, 2003-2005**

State	Processed Utilization		
	2003 <i>Tons</i>	2004 <i>Tons</i>	2005 <i>Tons</i>
MI	51,000	34,900	66,500
NY	104,000	99,300	137,000
OH	5,100	3,000	6,800
PA	55,800	78,000	78,000
WA	212,000	140,000	275,000
Oth Sts	900	920	460
US	428,800	356,120	563,760

**Niagara Grapes: Processed Utilization by State
and United States, 2003-2005**

State	Processed Utilization		
	2003 <i>Tons</i>	2004 <i>Tons</i>	2005 <i>Tons</i>
MI	27,000	19,400	31,000
NY	18,000	19,800	18,000
OH	500	450	550
PA	6,200	3,600	6,000
WA	20,000	20,000	30,000
US	71,700	63,250	85,550

**Peaches: Bearing Acreage and Yield by Type,
State, and United States, 2003-2005**

State	Bearing Acreage			Yield per Acre ¹		
	2003 <i>Acres</i>	2004 <i>Acres</i>	2005 <i>Acres</i>	2003 <i>Tons</i>	2004 <i>Tons</i>	2005 <i>Tons</i>
AL	3,000	3,000	2,800	1.50	4.67	4.29
AR	1,600	1,400	1,500	2.78	3.21	3.30
CA						
Freestone	37,000	37,000	36,000	11.20	11.80	10.70
CO	1,900	2,000	2,100	5.53	6.50	5.71
CT	400	400	400	1.88	2.13	1.75
GA	12,000	12,000	11,500	4.58	4.38	3.48
ID	820	920	920	7.93	9.78	8.70
IL	1,600	1,600	1,600	6.41	6.63	7.00
IN ²	650	650		2.62	1.85	
KY	280	270	280	3.21	2.96	2.68
LA	290	280	270	2.76	3.04	2.41
MD	1,100	1,100	1,000	3.86	3.73	4.20
MA	380	380	380	3.95	2.53	2.63
MI	5,000	5,200	5,000	4.70	3.60	2.80
MO	1,600	1,600	1,500	3.13	2.81	3.87
NJ	8,000	7,600	7,400	4.38	4.28	4.73
NY	1,700	1,700	1,700	3.82	3.53	2.50
NC	1,200	1,200	1,200	2.50	2.92	5.00
OH	1,300	1,300	1,300	4.35	3.92	1.62
OK	850	840	900	1.76	2.38	2.22
OR	800	700	600	2.81	4.71	4.67
PA	4,500	4,500	4,500	8.11	5.11	5.91
SC	15,000	14,500	14,000	3.33	4.83	5.36
TN	500	500	500	3.50	3.90	4.00
TX	6,500	7,000	6,000	0.54	1.74	1.46
UT	1,300	1,300	1,300	3.46	3.85	3.62
VA	1,260	1,260	1,260	3.97	3.57	3.73
WA	2,900	2,900	2,900	6.72	7.41	7.21
WV	1,100	970	950	5.68	6.19	5.79
Total Above	114,530	114,070	109,760	6.32	6.73	6.38
CA						
Clingstone	31,000	32,000	30,400	17.30	16.80	15.90
US	145,530	146,070	140,160	8.65	8.95	8.45

¹ Yield is based on total production.

² Estimates discontinued in 2005.

**Peaches: Bearing Acreage and Yield by Type,
California, 2003-2005**

Type	Bearing Acreage			Yield per Acre ¹		
	2003 <i>Acres</i>	2004 <i>Acres</i>	2005 <i>Acres</i>	2003 <i>Tons</i>	2004 <i>Tons</i>	2005 <i>Tons</i>
Freestone	37,000	37,000	36,000	11.20	11.80	10.70
Clingstone	31,000	32,000	30,400	17.30	16.80	15.90
Total	68,000	69,000	66,400	14.00	14.10	13.10

¹ Yield is based on total production.

**Peaches: Total and Utilized Production, by Type,
State, and United States, 2003-2005**

State	Total Production			Utilized Production		
	2003	2004	2005	2003	2004	2005
	<i>Tons</i>	<i>Tons</i>	<i>Tons</i>	<i>Tons</i>	<i>Tons</i>	<i>Tons</i>
AL	4,500	14,000	12,000	3,850	10,000	10,000
AR	4,450	4,500	4,950	4,000	3,700	4,650
CA						
Freestone	413,000	436,000	385,000	413,000	390,000	385,000
CO	10,500	13,000	12,000	10,000	12,000	11,000
CT	750	850	700	750	850	700
GA	55,000	52,500	40,000	53,000	49,500	37,000
ID	6,500	9,000	8,000	6,300	8,500	8,000
IL	10,250	10,600	11,200	9,900	9,500	11,000
IN ¹	1,700	1,200		1,650	1,200	
KY	900	800	750	900	750	650
LA	800	850	650	750	800	650
MD	4,250	4,100	4,200	4,250	4,100	4,200
MA	1,500	960	1,000	1,350	950	990
MI	23,500	18,700	14,000	21,500	18,700	14,000
MO	5,000	4,500	5,800	5,000	4,500	5,800
NJ	35,000	32,500	35,000	31,000	30,500	33,700
NY	6,500	6,000	4,250	6,000	5,900	4,100
NC	3,000	3,500	6,000	3,000	3,500	6,000
OH	5,650	5,100	2,100	5,500	5,000	2,100
OK	1,500	2,000	2,000	1,400	2,000	1,860
OR	2,250	3,300	2,800	1,750	3,200	2,700
PA	36,500	23,000	26,600	35,500	22,700	26,600
SC	50,000	70,000	75,000	40,000	55,000	45,000
TN	1,750	1,950	2,000	1,600	1,800	1,800
TX	3,500	12,200	8,750	3,350	9,900	8,350
UT	4,500	5,000	4,700	4,350	4,550	4,420
VA	5,000	4,500	4,700	4,600	4,400	4,630
WA	19,500	21,500	20,900	19,500	21,500	20,900
WV	6,250	6,000	5,500	5,900	5,800	5,300
Total Above	723,500	768,110	700,550	699,650	690,800	661,100
CA						
Clingstone	536,000	539,000	484,000	505,500	539,000	484,000
US	1,259,500	1,307,110	1,184,550	1,205,150	1,229,800	1,145,100

¹ Estimates discontinued in 2005.

**Peaches: Total and Utilized Production, by Type,
California, 2003-2005**

Type	Total Production			Utilized Production		
	2003	2004	2005	2003	2004	2005
	<i>Tons</i>	<i>Tons</i>	<i>Tons</i>	<i>Tons</i>	<i>Tons</i>	<i>Tons</i>
Freestone	413,000	436,000	385,000	413,000	390,000	385,000
Clingstone	536,000	539,000	484,000	505,500	539,000	484,000
Total	949,000	975,000	869,000	918,500	929,000	869,000

**Peaches: Price and Value by Type, State,
and United States, 2003-2005**

State	Price per Ton			Value of Utilized Production		
	2003	2004	2005	2003	2004	2005
	<i>Dollars</i>	<i>Dollars</i>	<i>Dollars</i>	<i>1,000 Dollars</i>	<i>1,000 Dollars</i>	<i>1,000 Dollars</i>
AL	940.00	661.00	808.00	3,619	6,610	8,080
AR	942.00	842.00	1,100.00	3,769	3,117	5,130
CA						
Freestone	336.00	281.00	408.00	138,746	109,760	157,048
CO	1,220.00	944.00	1,080.00	12,160	11,328	11,880
CT	1,400.00	1,600.00	1,600.00	1,050	1,360	1,120
GA	559.00	667.00	743.00	29,642	33,017	27,476
ID	713.00	752.00	967.00	4,491	6,388	7,735
IL	1,020.00	770.00	1,250.00	10,138	7,315	13,780
IN ¹	1,430.00	1,380.00		2,363	1,656	
KY	1,110.00	1,290.00	1,000.00	1,003	968	650
LA	1,630.00	1,420.00	1,730.00	1,223	1,136	1,125
MD	947.00	558.00	919.00	4,024	2,289	3,860
MA	1,600.00	1,500.00	1,500.00	2,160	1,425	1,485
MI	362.00	549.00	570.00	7,790	10,274	7,982
MO	860.00	780.00	980.00	4,300	3,510	5,684
NJ	780.00	760.00	916.00	24,180	23,180	30,869
NY	703.00	717.00	690.00	4,218	4,232	2,828
NC	800.00	840.00	850.00	2,400	2,940	5,100
OH	996.00	1,000.00	1,100.00	5,478	5,000	2,310
OK	1,240.00	1,030.00	1,010.00	1,730	2,060	1,879
OR	1,120.00	867.00	966.00	1,957	2,774	2,608
PA	659.00	710.00	715.00	23,397	16,114	19,011
SC	723.00	557.00	703.00	28,925	30,623	31,641
TN	1,030.00	1,070.00	1,280.00	1,648	1,926	2,304
TX	1,460.00	1,520.00	1,680.00	4,891	15,097	14,047
UT	789.00	627.00	775.00	3,431	2,853	3,424
VA	756.00	660.00	800.00	3,478	2,904	3,704
WA	473.00	349.00	561.00	9,228	7,502	11,732
WV	740.00	478.00	724.00	4,366	2,772	3,837
Total Above	494.00	463.00	587.00	345,805	320,130	388,329
CA						
Clingstone	215.00	263.00	254.00	108,484	141,494	122,939
US	377.00	375.00	446.00	454,289	461,624	511,268

¹ Estimates discontinued in 2005.

**Peaches: Price and Value by Type,
California, 2003-2005**

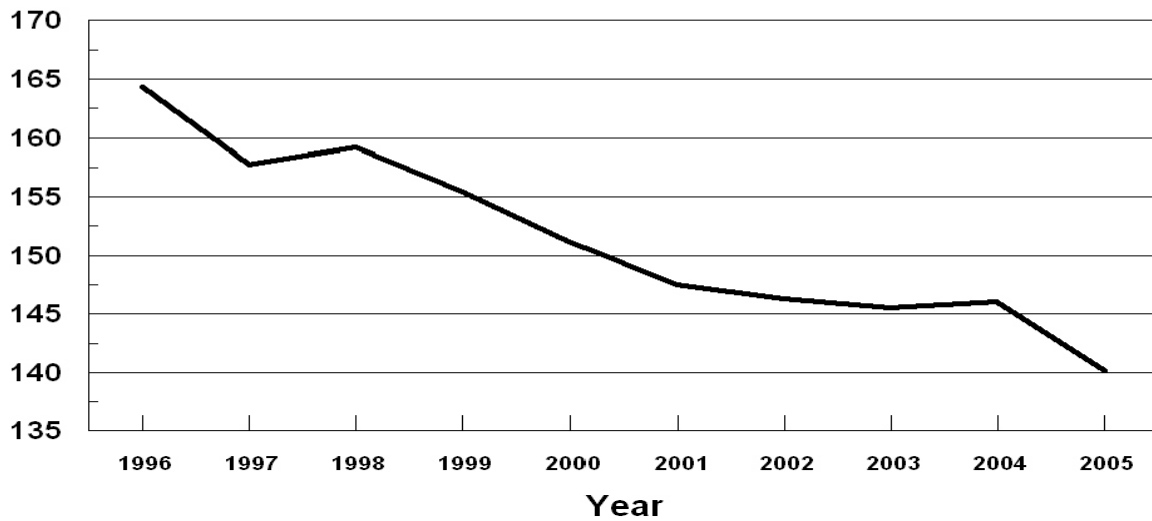
Type	Price per Ton			Value of Utilized Production		
	2003	2004	2005	2003	2004	2005
	<i>Dollars</i>	<i>Dollars</i>	<i>Dollars</i>	<i>1,000 Dollars</i>	<i>1,000 Dollars</i>	<i>1,000 Dollars</i>
Freestone	336.00	281.00	408.00	138,746	109,760	157,048
Clingstone	215.00	263.00	254.00	108,484	141,494	122,939
Total	269.00	270.00	322.00	247,230	251,254	279,987

U. S. Peaches

Bearing Acres

1996 - 2005

(000) Acres

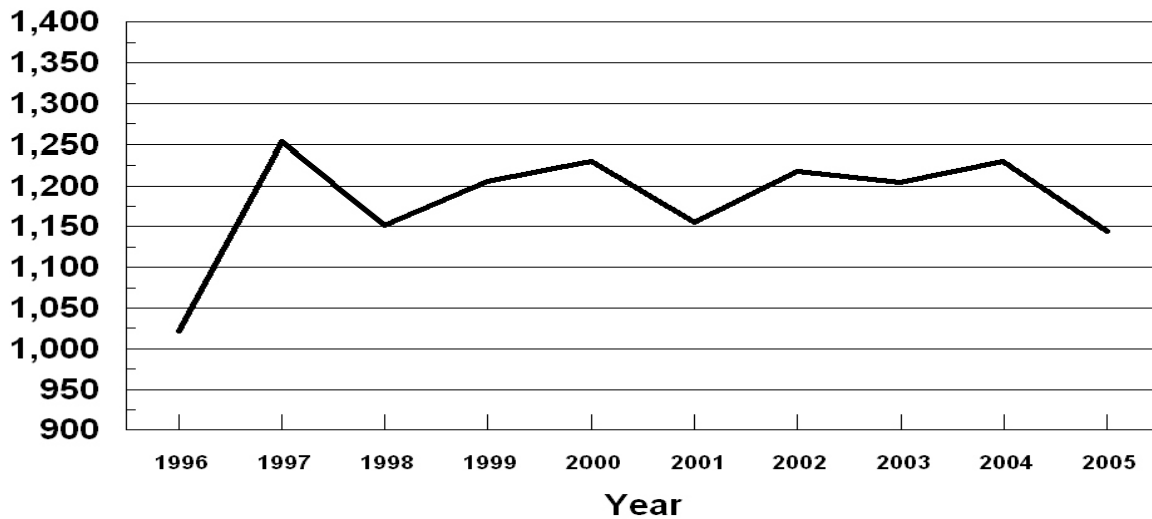


U. S. Peaches

Utilized Production

1996 - 2005

Tons



**Peaches: Fresh and Processed Utilization, and Price
by Type, State and United States, 2003-2005**

Use and State	Fresh and Processed Utilization					
	Quantity			Price per Ton		
	2003 <i>Tons</i>	2004 <i>Tons</i>	2005 <i>Tons</i>	2003 <i>Dollars</i>	2004 <i>Dollars</i>	2005 <i>Dollars</i>
Fresh						
AL	3,850	10,000	10,000	940.00	661.00	808.00
CA						
Freestone	282,300	259,000	252,000	406.00	341.00	540.00
CT	750	850	700	1,400.00	1,600.00	1,600.00
IL	9,900	9,500	10,800	1,020.00	770.00	1,250.00
IN ¹	1,650	1,200		1,430.00	1,380.00	
KY	900	750	650	1,110.00	1,290.00	1,000.00
LA	750	800	650	1,630.00	1,420.00	1,730.00
MD	4,200	4,050	4,000	956.00	563.00	950.00
MA	1,350	950	990	1,600.00	1,500.00	1,500.00
MI	12,500	12,500	7,000	400.00	660.00	780.00
MO	5,000	4,500	5,800	860.00	780.00	980.00
NY	4,250	3,600	1,950	840.00	920.00	900.00
OH	5,500	5,000	2,100	996.00	1,000.00	1,100.00
OK	1,400	2,000	1,860	1,240.00	1,030.00	1,010.00
SC	35,000	52,500	42,000	790.00	573.00	733.00
TN	1,600	1,800	1,800	1,030.00	1,070.00	1,280.00
TX	3,350	9,800	8,230	1,460.00	1,540.00	1,690.00
VA	4,600	4,400	4,630	756.00	660.00	800.00
WV	5,900	5,800	5,300	740.00	478.00	724.00
Oth Sts	158,000	146,600	141,590	716.00	733.00	867.00
US	542,750	535,600	502,050	581.00	548.00	718.00
Processed						
CA						
Clingstone	505,500	539,000	484,000	215.00	263.00	254.00
Freestone ²	130,700	131,000	133,000	185.00	164.00	158.00
MI	9,000	6,200	7,000	310.00	326.00	360.00
NY	1,750	2,300	2,150	370.00	400.00	499.00
SC	5,000	2,500	3,000	255.00	216.00	285.00
Oth Sts	10,450	13,200	13,900	144.00	133.00	189.00
US ³	662,400	694,200	643,050	210.00	242.00	235.00

¹ Estimates discontinued in 2005.

² CA Freestone quantity and value include dried, price excludes dried.

³ US quantity, price, and value include dried.

**Peaches: Fresh and Processed Value by State
and United States, 2003-2005**

Use and State	Fresh and Processed Utilization		
	Value of Utilized Production		
	2003 <i>1,000 Dollars</i>	2004 <i>1,000 Dollars</i>	2005 <i>1,000 Dollars</i>
Fresh			
AL	3,619	6,610	8,080
CA			
Freestone	114,614	88,319	136,080
CT	1,050	1,360	1,120
IL	10,138	7,315	13,500
IN ¹	2,363	1,656	
KY	1,003	968	650
LA	1,223	1,136	1,125
MD	4,015	2,280	3,800
MA	2,160	1,425	1,485
MI	5,000	8,250	5,460
MO	4,300	3,510	5,684
NY	3,570	3,312	1,755
OH	5,478	5,000	2,310
OK	1,730	2,060	1,879
SC	27,650	30,083	30,786
TN	1,648	1,926	2,304
TX	4,891	15,092	13,909
VA	3,478	2,904	3,704
WV	4,366	2,772	3,837
Oth Sts	113,162	107,466	122,817
US	315,458	293,444	360,285
Processed			
CA			
Clingstone	108,484	141,494	122,939
Freestone ²	24,132	21,441	20,968
MI	2,790	2,024	2,522
NY	648	920	1,073
SC	1,275	540	855
Oth Sts	1,502	1,761	2,626
US ³	138,831	168,180	150,983

¹ Estimates discontinued in 2005.

² CA Freestone quantity and value include dried, price excludes dried.

³ US quantity, price, and value include dried.

**Peaches: Processed Utilization, and Price by Use,
State, and United States, 2003-2005**

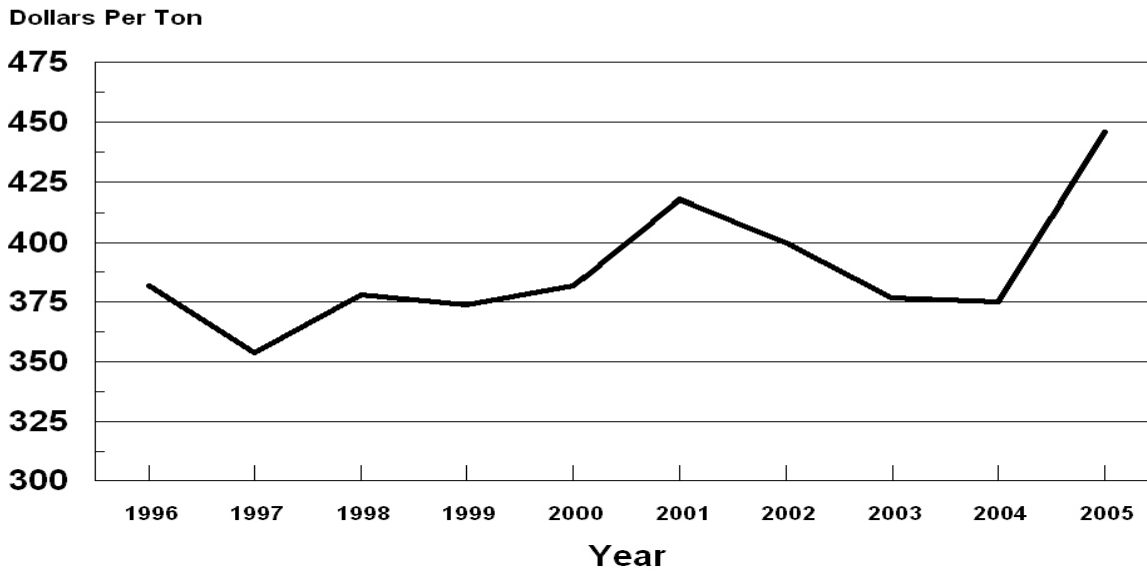
Use and State	Processed Utilization					
	Quantity			Price per Ton		
	2003 <i>Tons</i>	2004 <i>Tons</i>	2005 <i>Tons</i>	2003 <i>Dollars</i>	2004 <i>Dollars</i>	2005 <i>Dollars</i>
Canned						
CA						
Clingstone	478,500	505,000	459,000	217.00	270.00	256.00
NY						
Freestone	1,750	1,750	1,900	370.00	420.00	512.00
Oth Sts	18,250	17,190	18,760	234.00	234.00	276.00
US	498,500	523,940	479,660	218.00	269.00	258.00
Frozen						
CA						
Freestone	95,950	86,600	82,800	211.00	211.00	202.00
NY						
Freestone		550	250		336.00	400.00
Oth Sts	15,500	18,600	18,200	312.00	304.00	333.00
US	111,450	105,750	101,250	225.00	228.00	226.00
Dried						
CA						
Freestone	10,150	10,400	12,700	47.00	32.00	46.00
US	10,150	10,400	12,700	47.00	32.00	46.00
Other ¹						
Oth Sts	42,300	54,110	49,440	107.00	49.00	78.00
US	42,300	54,110	49,440	107.00	49.00	78.00

¹ Pickled, wine, brandy, juice, and baby food.

U.S. Peaches

Prices Received

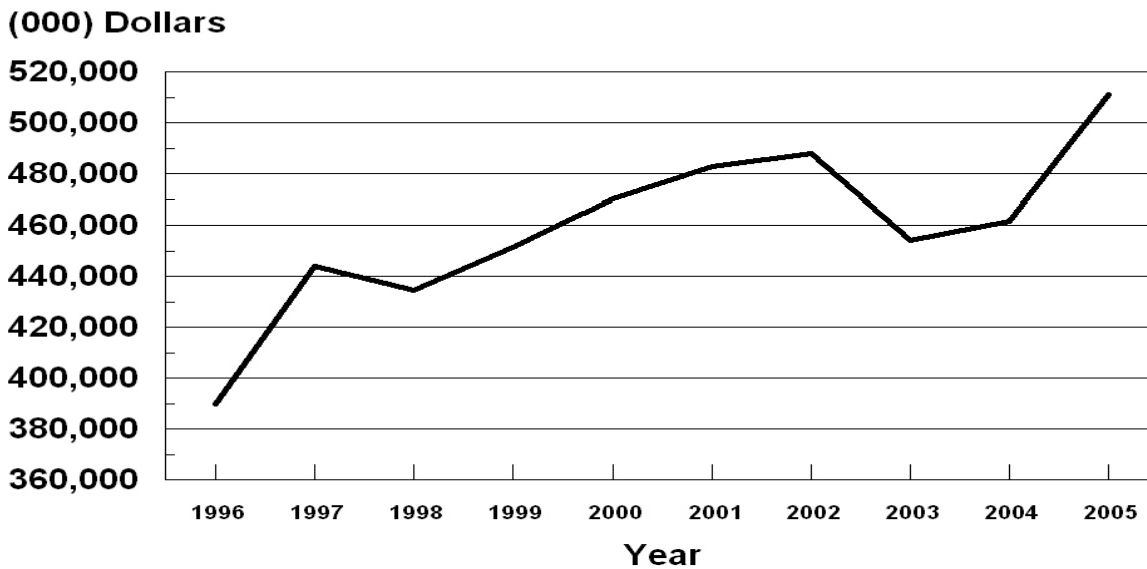
1996 - 2005



U.S. Peaches

Value of Utilized Production

1996 - 2005



**All Pears: Bearing Acreage, Yield, Production, and Utilization
by State and United States, 2003-2005 ¹**

State and Year	Bearing Acreage <i>Acres</i>	Yield Per Acre ² <i>Tons</i>	Production		Utilization	
			Total	Utilized	Fresh	Processed
			<i>Tons</i>	<i>Tons</i>	<i>Tons</i>	<i>Tons</i>
CA						
2003	17,300	15.70	272,000	272,000		
2004	17,000	15.90	271,000	271,000		
2005	16,000	12.60	202,000	202,000		
CO						
2003			2,800	2,800		
2004			2,600	2,500		
2005			2,500	2,200		
CT						
2003			1,300	1,270		
2004			900	900		
2005			1,000	1,000		
MI						
2003	800	6.00	4,800	4,300		
2004	800	4.33	3,460	3,400		
2005	800	2.50	2,000	1,970		
NY						
2003	1,400	11.10	15,500	14,800		
2004	1,400	11.80	16,500	13,900		
2005	1,400	6.07	8,500	8,200		
OR						
2003	17,600	11.90	210,000	206,000		
2004	16,900	12.60	213,000	211,000		
2005	16,200	11.90	192,000	191,000		
PA						
2003	900	5.78	5,200	4,900		
2004	900	5.00	4,500	4,400		
2005	800	2.63	2,100	2,100		
UT						
2003	130	3.46	450	380		
2004	130	2.31	300	300		
2005	130	1.73	225	200		
WA						
2003	25,500	16.50	422,000	422,000		
2004	26,300	13.90	366,000	366,000		
2005	26,300	15.80	415,000	415,000		
US ³						
2003	64,150	14.60	934,050	928,450	559,950	368,500
2004	63,950	13.70	878,260	873,400	514,270	359,130
2005	62,150	13.30	825,325	823,670	506,400	317,270

¹ Missing data not published to avoid disclosure of individual operations.

² Yield is based on total production.

³ Processed mostly canned, but includes small quantities dried and other uses not published separately to avoid disclosure of individual operations.

**All Pears: Price and Value by State
and United States, 2003-2005 ¹**

State and Year	Price per Ton			Value of Production		
	Fresh	Processed Exc. Dried	All	Fresh	Processed Inc. Dried	All
	<i>Dollars</i>	<i>Dollars</i>	<i>Dollars</i>	<i>1,000 Dollars</i>	<i>1,000 Dollars</i>	<i>1,000 Dollars</i>
CA						
2003			233.00			63,376
2004			297.00			80,432
2005			395.00			79,790
CO						
2003			600.00			1,679
2004			561.00			1,403
2005			455.00			1,002
CT						
2003			1,000.00			1,270
2004			800.00			720
2005			952.00			952
MI						
2003			259.00			1,112
2004			311.00			1,058
2005			423.00			834
NY						
2003			373.00			5,513
2004			386.00			5,370
2005			499.00			4,088
OR						
2003			327.00			67,328
2004			348.00			73,381
2005			334.00			63,808
PA						
2003			697.00			3,414
2004			564.00			2,482
2005			597.00			1,254
UT						
2003			784.00			298
2004			393.00			118
2005			645.00			129
WA						
2003			306.00			129,152
2004			350.00			128,005
2005			344.00			142,840
US ²						
2003	358.00	197.00	294.00	200,642	72,500	273,142
2004	430.00	201.00	335.00	221,023	71,946	292,969
2005	460.00	193.00	358.00	233,125	61,572	294,697

¹ Missing data not published to avoid disclosure of individual operations.

² Processed mostly canned, but includes small quantities dried and other uses not published separately to avoid disclosure of individual operations.

**Pears: Bearing Acreage, Yield, Production, and Utilization
by Type, State, and United States, 2003-2005 ¹**

Type, State and Year	Bearing Acreage <i>Acres</i>	Yield Per Acre ² <i>Tons</i>	Production		Utilization	
			Total <i>Tons</i>	Utilized <i>Tons</i>	Fresh <i>Tons</i>	Processed <i>Tons</i>
Bartlett ³						
CA						
2003	13,000	16.70	217,000	217,000	62,000	155,000
2004	13,000	17.20	223,000	223,000	68,000	155,000
2005	12,000	13.80	166,000	166,000	47,000	119,000
OR						
2003	4,600	11.70	54,000	54,000	27,000	27,000
2004	4,400	14.30	63,000	61,000	28,000	33,000
2005	4,200	13.80	58,000	57,000	28,000	29,000
WA						
2003	11,500	16.10	185,000	185,000	59,000	126,000
2004	11,800	14.50	171,000	171,000	51,000	120,000
2005	11,800	14.20	167,000	167,000	59,000	108,000
Total						
2003	29,100	15.70	456,000	456,000	148,000	308,000
2004	29,200	15.70	457,000	455,000	147,000	308,000
2005	28,000	14.00	391,000	390,000	134,000	256,000
Other ⁴						
CA						
2003	4,300	12.80	55,000	55,000		
2004	4,000	12.00	48,000	48,000		
2005	4,000	9.00	36,000	36,000		
OR						
2003	13,000	12.00	156,000	152,000		
2004	12,500	12.00	150,000	150,000		
2005	12,000	11.20	134,000	134,000		
WA						
2003	14,000	16.90	237,000	237,000		
2004	14,500	13.40	195,000	195,000		
2005	14,500	17.10	248,000	248,000		
Total						
2003	31,300	14.30	448,000	444,000	390,400	53,600
2004	31,000	12.70	393,000	393,000	348,000	45,000
2005	30,500	13.70	418,000	418,000	361,000	57,000

¹ Missing data not published to avoid disclosure of individual operations.

² Yield is based on total production.

³ Processed mostly canned, but includes small quantities dried and other uses not published separately to avoid disclosure of individual operations.

⁴ Processed mostly juice, but includes small quantities canned and other uses not published separately to avoid disclosure of individual operations.

**Pears: Price and Value by Type, State,
and United States, 2003-2005 ¹**

Type, State and Year	Price per Ton			Value of Production		
	Fresh	Processed Exc. Dried	All	Fresh	Processed Inc. Dried	All
	<i>Dollars</i>	<i>Dollars</i>	<i>Dollars</i>	<i>1,000 Dollars</i>	<i>1,000 Dollars</i>	<i>1,000 Dollars</i>
Bartlett ²						
CA						
2003	190.00	226.00	216.00	11,780	35,070	46,850
2004	261.00	251.00	252.00	17,748	38,540	56,288
2005	424.00	247.00	297.00	19,928	29,406	49,334
OR						
2003	457.00	211.00	334.00	12,339	5,707	18,046
2004	473.00	201.00	326.00	13,244	6,633	19,877
2005	485.00	213.00	347.00	13,580	6,176	19,756
WA						
2003	525.00	225.00	321.00	30,975	28,350	59,325
2004	530.00	196.00	296.00	27,030	23,505	50,535
2005	580.00	212.00	342.00	34,220	22,852	57,072
Total						
2003	372.00	224.00	272.00	55,094	69,127	124,221
2004	395.00	224.00	278.00	58,022	68,678	126,700
2005	505.00	228.00	323.00	67,728	58,434	126,162
Other ³						
CA						
2003			300.00			16,526
2004			503.00			24,144
2005			846.00			30,456
OR						
2003			324.00			49,282
2004			357.00			53,504
2005			329.00			44,052
WA						
2003			295.00			69,827
2004			397.00			77,470
2005			346.00			85,768
Total						
2003	343.00	34.70	305.00	133,777	1,858	135,635
2004	441.00	33.90	395.00	153,594	1,524	155,118
2005	439.00	33.70	383.00	158,355	1,921	160,276

¹ Missing data not published to avoid disclosure of individual operations.

² Processed mostly canned, but includes small quantities dried and other uses not published separately to avoid disclosure of individual operations.

³ Processed mostly juice, but includes small quantities canned and other uses not published separately to avoid disclosure of individual operations.

**Hawaii Crops: Acreage Harvested, Yield, Utilized
Production, and Utilization, 2003-2005**

Crop and Year	Acreage Harvested	Yield Per Acre	Utilized Production	Utilization	
				Fresh	Processed
	<i>Acres</i>	<i>1,000 Pounds</i>	<i>1,000 Pounds</i>	<i>1,000 Pounds</i>	<i>1,000 Pounds</i>
Bananas					
2003	1,350	16.7	22,500	22,500	
2004	1,000	16.5	16,500	16,500	
2005	980	21.3	20,900	20,900	
Guavas					
2003	530	12.6	6,700		6,700
2004	525	15.4	8,100		8,100
2005	630	12.9	8,100		8,100
Papayas					
2003	1,565	27.2	42,600	40,800	1,800
2004	1,235	29.0	35,800	34,100	1,700
2005	1,480	22.2	32,900	30,700	2,200
	<i>Acres</i>	<i>1,000 Pounds</i>	<i>Tons</i>	<i>Tons</i>	<i>Tons</i>
Pineapples ¹					
2003	16,000		300,000	130,000	170,000
2004	13,000		220,000	104,000	116,000
2005	14,000		212,000	106,000	106,000

¹ Acreage is total acres in crop, not harvested acreage. Yield is not estimated. Production and processed utilization on a fresh weight basis.

Hawaii Crops: Price and Value, 2003-2005

Crop and Year	Price			Value of Production		
	Fresh <i>Dollars per Pound</i>	Processed <i>Dollars per Pound</i>	All <i>Dollars per Pound</i>	Fresh <i>1,000 Dollars</i>	Processed <i>1,000 Dollars</i>	Total <i>1,000 Dollars</i>
Bananas						
2003	0.410		0.410	9,225		9,225
2004	0.490		0.490	8,085		8,085
2005	0.439		0.439	9,175		9,175
Guavas						
2003		0.138	0.138		925	925
2004		0.144	0.144		1,166	1,166
2005		0.139	0.139		1,126	1,126
Papayas						
2003	0.319	0.030	0.307	13,015	54	13,069
2004	0.361	0.030	0.345	12,310	51	12,361
2005	0.364	0.030	0.342	11,175	66	11,241
	<i>Dollars per Ton</i>	<i>Dollars per Ton</i>	<i>Dollars per Ton</i>			
Pineapples ¹						
2003	604.00	135.00	338.00	78,520	22,950	101,470
2004	634.00	148.00	378.00	65,936	17,168	83,104
2005	600.00	148.00	374.00	63,600	15,688	79,288

¹ Processed price is for fresh fruit delivered to processing plant door. Fresh price is for fruit at wholesale establishments for local sales and at shippers dock for mainland and foreign sales.

**Apples: Unutilized Production by State
and United States, 2003-2005**

Crop	Unharvested Production			Harvested Not Sold		
	2003	2004	2005	2003	2004	2005
	<i>Million Pounds</i>	<i>Million Pounds</i>	<i>Million Pounds</i>	<i>Million Pounds</i>	<i>Million Pounds</i>	<i>Million Pounds</i>
AZ			0.2			
AR ¹	0.1	0.7			0.1	
CA				10.0		
CO		1.0	4.0	1.0		
CT	1.5	0.5	0.5		0.5	
GA	0.1					
IL	4.9	4.9	9.9	1.7	0.3	0.6
IN	3.0	2.0	10.0			
IA	1.3	0.5	0.2			
KS ¹	0.7	0.5		0.1	0.1	
KY	0.3	0.6	0.7	0.1	0.1	0.1
ME	2.5	2.5	2.0	1.5	1.5	
MD	0.1	0.1	0.1	1.5	1.0	0.1
MA	4.0	3.5	2.5	1.5	1.5	
MI			5.0			
MN	6.2	4.1	4.6	1.0	1.0	1.4
MO			2.0		1.0	
NH	1.0	1.0	1.0	0.5	1.5	0.5
NJ		1.0	1.0		1.0	
NM ¹		1.3		0.2	0.8	
NY	10.0		10.0			
NC	5.0	23.0	12.0			
OH	2.0		1.0			
OR	1.0	3.0	10.0			
PA		5.0	5.0			
RI	0.3				0.1	0.2
SC	1.4	2.9	0.1	0.1	0.1	1.4
TN	0.4	0.5	1.0	0.1		
UT	0.5		1.9		0.6	0.4
VT	3.5	2.5	3.0	1.0	1.0	0.5
VA	8.0		3.0		3.0	
WV	2.0	1.0	3.0			1.0
WI	8.0	2.0	2.5	2.0		
US	67.8	64.1	96.2	22.3	15.2	6.2

¹ Estimates discontinued in 2005.

**Miscellaneous Crops: Unutilized Production
by State and United States, 2003-2005**

Crop and State	Unharvested Production			Harvested Not Sold		
	2003	2004	2005	2003	2004	2005
	<i>Tons</i>	<i>Tons</i>	<i>Tons</i>	<i>Tons</i>	<i>Tons</i>	<i>Tons</i>
Peaches						
AL	450	3,360	1,050	200	640	950
AR	350	650	150	100	150	150
CA						
Freestone		2,000			44,000	
Clingstone				30,500		
CO		500	500	500	500	500
GA	1,000	1,000		1,000	2,000	3,000
ID		500		200		
IL	150	1,000	20	200	100	180
IN ¹	50					
KY		50	100			
LA	50	50				
MA	150	10	10			
MI	1,000			1,000		
NJ	2,500	1,500	1,200	1,500	500	100
NY	500		150		100	
OH	150	100				
OK	50		140	50		
OR	500	100	100			
PA	1,000	300				
SC	3,500	2,500	25,000	6,500	12,500	5,000
TN	100	150	200	50		
TX	50	2,000	290	100	300	110
UT	50	450	170	100		110
VA	150	50	70	250	50	
WV				350	200	200
US	11,750	16,270	29,150	42,600	61,040	10,300
Nectarines						
CA		2,000			15,000	
	<i>Million Pounds</i>	<i>Million Pounds</i>	<i>Million Pounds</i>	<i>Million Pounds</i>	<i>Million Pounds</i>	<i>Million Pounds</i>
Cherries (Tart)						
UT			2.0			
	<i>Barrels²</i>	<i>Barrels²</i>	<i>Barrels²</i>	<i>Barrels²</i>	<i>Barrels²</i>	<i>Barrels²</i>
Cranberries						
NJ					8,000	

¹ Estimates discontinued in 2005.

² A barrel weighs 100 pounds.

**Miscellaneous Crops: Unutilized Production
by State and United States, 2003-2005**

Crop and State	Unharvested Production			Harvested Not Sold		
	2003	2004	2005	2003	2004	2005
	<i>Tons</i>	<i>Tons</i>	<i>Tons</i>	<i>Tons</i>	<i>Tons</i>	<i>Tons</i>
Apricots						
CA		8,500	5,000			
UT	20	40				5
US	20	8,540	5,000			5
Cherries (Sweet)						
CA				1,700	2,700	4,100
MT	60	70		150	70	50
NY	10	10	50			10
OR		1,000	2,000			1,000
PA ¹		50				
UT			30	200		20
US	70	1,130	2,080	2,050	2,770	5,180
Grapes						
AR	100	300				
CA	75,000					
GA	300	100				
MI	14,000	4,500				
NY	42,000			4,000		
OH	1,100					
OR		4,600	2,000			
PA	16,000			1,000		
TX	200	250	1,200		50	
VA				200	300	
US	148,700	9,750	3,200	5,200	350	
Kiwifruit						
CA				1,400	2,000	1,000
Pears						
CO		100	300			
CT	30					
MI	500	60	30			
NY	700	1,600	300		1,000	
OR	4,000	2,000	1,000			
PA	300	100				
UT			20	70		
US	5,530	3,860	1,650	70	1,000	
Prunes & Plums						
ID		80	50	20		
MI		470			30	
OR	1,400	5,500				
US	1,400	6,050	50	20	30	
Prunes						
CA ²				13,000	1,000	3,000
Plums						
CA		1,000			11,000	

¹ Estimates discontinued in 2005.

² CA prunes are on a dried basis.

**Berries: Unutilized Production by State
and United States, 2003-2005**

Crop and State	Unharvested Production			Harvested Not Sold		
	2003	2004	2005	2003	2004	2005
	<i>1,000 Pounds</i>	<i>1,000 Pounds</i>	<i>1,000 Pounds</i>	<i>1,000 Pounds</i>	<i>1,000 Pounds</i>	<i>1,000 Pounds</i>
Red Raspberries WA	500					
Cultivated Blueberries						
AL	140	410	140	10		90
AR	100	100	150			
FL	300	400				
IN	100	100				
NJ	1,000					
NY	100	300	100			
US	1,740	1,310	390	10		90
Boysenberries OR			30			
Black Raspberries OR	100					
Loganberries OR		10	70			
Cultivated Blackberries (OR)						
Marion	400		400			
Evergreen	100					
Other	100		100			
All	600		500			

**Apples for Fresh Use: Prices Received, by State, July 2003 - June 2006
and United States, July 2001 - June 2006 ¹**

State	2003						2004					
	Jul	Aug	Sep	Oct	Nov	Dec	Jan	Feb	Mar	Apr	May	Jun
	<i>Dollars per Pound</i>	<i>Dollars per Pound</i>	<i>Dollars per Pound</i>	<i>Dollars per Pound</i>	<i>Dollars per Pound</i>	<i>Dollars per Pound</i>	<i>Dollars per Pound</i>	<i>Dollars per Pound</i>	<i>Dollars per Pound</i>	<i>Dollars per Pound</i>	<i>Dollars per Pound</i>	<i>Dollars per Pound</i>
CA		0.402	0.226	0.227	0.266	0.266	0.271	0.183	0.267			
MI		0.200	0.235	0.210	0.190	0.185	0.185	0.185	0.190	0.190	0.180	0.180
NY			0.265	0.259	0.232	0.229	0.222	0.216	0.216	0.217	0.220	0.218
OH		0.320	0.324	0.321	0.278	0.298	0.279	0.276	0.278	0.273	0.278	
PA	0.208	0.214	0.214	0.220	0.215	0.215	0.202	0.202	0.202	0.202	0.202	
VA			0.230	0.225	0.225	0.220	0.215	0.210	0.210			
WA			0.301	0.297	0.320	0.310	0.330	0.329	0.328	0.320	0.313	0.309
State	2004						2005					
	Jul	Aug	Sep	Oct	Nov	Dec	Jan	Feb	Mar	Apr	May	Jun
	<i>Dollars per Pound</i>	<i>Dollars per Pound</i>	<i>Dollars per Pound</i>	<i>Dollars per Pound</i>	<i>Dollars per Pound</i>	<i>Dollars per Pound</i>	<i>Dollars per Pound</i>	<i>Dollars per Pound</i>	<i>Dollars per Pound</i>	<i>Dollars per Pound</i>	<i>Dollars per Pound</i>	<i>Dollars per Pound</i>
CA		0.241	0.222	0.250	0.160	0.213	0.154	0.285	0.335			
MI		0.220	0.225	0.215	0.215	0.210	0.190	0.190	0.185	0.185	0.185	0.175
NY			0.247	0.238	0.223	0.220	0.225	0.227	0.222	0.220	0.215	0.255
OH		0.320	0.320	0.315	0.310	0.315	0.295	0.290	0.290	0.255	0.240	
PA		0.175	0.171	0.170	0.172	0.173	0.175	0.175	0.175	0.175	0.171	
VA		0.270	0.280	0.270	0.260	0.250	0.240	0.230	0.220	0.200		
WA	0.300	0.282	0.297	0.272	0.254	0.222	0.213	0.198	0.176	0.163	0.170	0.158
State	2005						2006					
	Jul	Aug	Sep	Oct	Nov	Dec	Jan	Feb	Mar	Apr	May	Jun
	<i>Dollars per Pound</i>	<i>Dollars per Pound</i>	<i>Dollars per Pound</i>	<i>Dollars per Pound</i>	<i>Dollars per Pound</i>	<i>Dollars per Pound</i>	<i>Dollars per Pound</i>	<i>Dollars per Pound</i>	<i>Dollars per Pound</i>	<i>Dollars per Pound</i>	<i>Dollars per Pound</i>	<i>Dollars per Pound</i>
CA		0.385	0.371	0.391	0.311	0.380	0.476	0.449				
MI		0.220	0.235	0.225	0.210	0.210	0.195	0.195	0.200	0.205	0.205	0.190
NY			0.261	0.283	0.268	0.270	0.269	0.265	0.259	0.256	0.244	0.228
OH		0.330	0.330	0.338	0.324	0.316	0.315	0.304	0.269	0.245		
PA		0.190	0.180	0.175	0.175	0.180	0.180	0.190	0.190	0.200	0.210	
VA			0.205	0.203	0.207	0.206	0.206	0.207	0.206	0.190		
WA	0.157	0.171	0.331	0.297	0.310	0.261	0.263	0.258	0.252	0.244	0.247	0.279
	Jul	Aug	Sep	Oct	Nov	Dec	Jan ²	Feb	Mar	Apr	May	Jun
United States												
2001	0.151	0.167	0.213	0.247	0.235	0.231	0.218	0.216	0.220	0.218	0.215	0.204
2002	0.207	0.254	0.301	0.301	0.274	0.265	0.255	0.247	0.231	0.230	0.216	0.204
2003	0.208	0.346	0.270	0.278	0.305	0.288	0.297	0.300	0.304	0.298	0.296	0.296
2004	0.300	0.268	0.268	0.261	0.245	0.223	0.215	0.203	0.184	0.173	0.174	0.162
2005	0.157	0.211	0.309	0.288	0.294	0.258	0.260	0.255	0.249	0.242	0.246	0.277

¹ Equivalent packinghouse-door returns for CA, MI, NY, and WA; prices at point of first sale for other States.

² January of the following year.

**Grapes for Fresh Use: Monthly Average Prices Received,
United States, May 2001 - December 2005**

Year	May	Jun	Jul	Aug	Sep	Oct	Nov	Dec
	<i>Dollars Per Ton</i>	<i>Dollars Per Ton</i>	<i>Dollars Per Ton</i>	<i>Dollars Per Ton</i>	<i>Dollars Per Ton</i>	<i>Dollars Per Ton</i>	<i>Dollars Per Ton</i>	<i>Dollars Per Ton</i>
2001	790	1,190	630	600	670	640	640	850
2002	1,000	905	830	650	640	590	610	720
2003	930	970	760	650	620	600	660	730
2004	1,540	830	570	560	680	830	1,030	1,160
2005	1,020	920	530	530	620	610	490	390

**Peaches for Fresh Use: Monthly Average Prices Received,
United States, 2000-2005 ¹**

State	May	Jun	Jul	Aug	Sep
	<i>Dollars per Ton</i>	<i>Dollars per Ton</i>	<i>Dollars per Ton</i>	<i>Dollars per Ton</i>	<i>Dollars per Ton</i>
2001	790	676	576	420	594
2002	962	578	528	486	556
2003	945	509	524	455	489
2004	918	476	412	427	522
2005	756	596	576	743	622

¹ Equivalent packinghouse-door returns for CA and WA; price at point of first sale for other States.

**Pears for Fresh Use: Monthly Average Prices Received,
United States, July 2000 - June 2006 ¹**

Year	Jul	Aug	Sep	Oct	Nov	Dec	Jan ²	Feb	Mar	Apr	May	Jun
	<i>Dollars Per Ton</i>	<i>Dollars Per Ton</i>	<i>Dollars Per Ton</i>	<i>Dollars Per Ton</i>	<i>Dollars Per Ton</i>	<i>Dollars Per Ton</i>	<i>Dollars Per Ton</i>	<i>Dollars Per Ton</i>	<i>Dollars Per Ton</i>	<i>Dollars Per Ton</i>	<i>Dollars Per Ton</i>	<i>Dollars Per Ton</i>
2001	345	338	391	380	356	339	301	288	286	283	272	270
2002	322	316	366	419	402	398	333	322	318	316	319	(³)
2003	335	272	293	412	387	384	352	332	336	359	443	(³)
2004	325	381	390	432	434	437	445	465	458	465	482	513
2005	667	583	540	440	458	443	404	392	339	356	419	556

¹ Equivalent packinghouse-door returns for CA, NY, and WA; price at point of first sale for other States.

² January for the following year.

³ Insufficient sales to establish a price.

**Nut Crops: Bearing Acreage and Yield by Crop,
State, and United States, 2003-2005**

Crop and State	Bearing Acreage			Yield per Acre ¹		
	2003 <i>Acres</i>	2004 <i>Acres</i>	2005 <i>Acres</i>	2003 <i>Tons (In-Shell Basis)</i>	2004 <i>Tons (In-Shell Basis)</i>	2005 <i>Tons (In-Shell Basis)</i>
Hazelnuts OR	28,000	28,400	28,300	1.35	1.32	0.98
Walnuts (English) CA	213,000	214,000	215,000	1.53	1.52	1.65
				<i>Pounds (In-Shell Basis)</i>	<i>Pounds (In-Shell Basis)</i>	<i>Pounds (In-Shell Basis)</i>
Macadamia Nuts HI	17,800	17,800	18,000	2,980	3,170	3,330
Pistachios CA	88,000	93,000	105,000	1,350	3,730	2,700
				<i>Pounds (Shelled Basis)</i>	<i>Pounds (Shelled Basis)</i>	<i>Pounds (Shelled Basis)</i>
Almonds CA	550,000	570,000	580,000	1,890	1,760	1,580

¹ Yield is based on utilized production.

**Nut Crops: Production and Price by Crop,
State, and United States, 2003-2005**

Crop and State	Production			Price per Unit		
	2003 <i>Tons (In-Shell Basis)</i>	2004 <i>Tons (In-Shell Basis)</i>	2005 <i>Tons (In-Shell Basis)</i>	2003 <i>Dollars per Ton</i>	2004 <i>Dollars per Ton</i>	2005 <i>Dollars per Ton</i>
Hazelnuts OR	37,900	37,500	27,600	1,030.00	1,440.00	2,240.00
Walnuts (English) CA	326,000	325,000	355,000	1,160.00	1,390.00	1,520.00
	1,000 Pounds					
	<i>(In-Shell Basis)</i>	<i>(In-Shell Basis)</i>	<i>(In-Shell Basis)</i>	<i>Dollars per Pound</i>	<i>Dollars per Pound</i>	<i>Dollars per Pound</i>
Macadamia Nuts HI	53,000	56,500	60,000	0.610	0.730	0.740
Pistachios CA	119,000	347,000	283,000	1.220	1.340	2.040
	1,000 Pounds					
	<i>(Shelled Basis)</i>	<i>(Shelled Basis)</i>	<i>(Shelled Basis)</i>	<i>Dollars per Pound</i>	<i>Dollars per Pound</i>	<i>Dollars per Pound</i>
Almonds ¹ CA	1,040,000	1,005,000	915,000	1.570	2.210	2.600

¹ Price and value are based on the edible portion of the crop only. Production includes inedible quantities of no value as follows: 2003 - 20.8 million pounds; 2004 - 14.5 million pounds; and 2005 - 16.1 million pounds.

Nut Crops: Use by Crop, State, and United States, 2003-2005

Crop and State	Production					
	Sold In-Shell			Sold Shelled ¹		
	2003 <i>Tons</i>	2004 <i>Tons</i>	2005 <i>Tons</i>	2003 <i>Tons</i>	2004 <i>Tons</i>	2005 <i>Tons</i>
Hazelnuts OR	22,100	22,000	14,600	15,800	15,500	13,000
Walnuts (English) CA	81,000	75,000	82,000	245,000	250,000	273,000
	<i>1,000 Pounds</i>	<i>1,000 Pounds</i>	<i>1,000 Pounds</i>	<i>1,000 Pounds</i>	<i>1,000 Pounds</i>	<i>1,000 Pounds</i>
Pecans US	36,100	26,000	47,500	246,000	159,800	232,700
	<i>Marketable In-Shell</i>	<i>Marketable In-Shell</i>	<i>Marketable In-Shell</i>	<i>Shelling Stock ¹</i>	<i>Shelling Stock ¹</i>	<i>Shelling Stock ¹</i>
Pistachios CA	90,000	254,000	215,000	29,000	93,000	68,000

¹ In-shell basis.

**Nut Crops: Value and Meat Production by Crop,
State, and United States, 2003-2005**

Crop and State	Value of Utilized Production		
	2003 <i>1,000 Dollars</i>	2004 <i>1,000 Dollars</i>	2005 <i>1,000 Dollars</i>
Hazelnuts OR	39,037	54,000	61,824
Walnuts (English) CA	378,160	451,750	539,600
Macadamia Nuts HI	32,330	41,245	44,400
Pistachios CA	145,180	464,980	577,320
Almonds ¹ CA	1,600,144	2,189,005	2,337,140
	Meat Production of Nuts Sold Shelled		
	2003 <i>Tons</i>	2004 <i>Tons</i>	2005 <i>Tons</i>
Hazelnuts OR	6,300	5,900	4,900
Walnuts (English) CA	105,000	108,600	121,500
	<i>1,000 Pounds</i>	<i>1,000 Pounds</i>	<i>1,000 Pounds</i>
Pecans US	102,000	71,000	104,000
Pistachios CA	13,700	45,700	33,400

¹ Price and value are based on the edible portion of the crop only. Production includes inedible quantities of no value as follows: 2003 - 20.8 million pounds; 2004 - 14.5 million pounds; and 2005 - 16.1 million pounds.

**Pecans: Utilized Production and Price by Variety,
State, and United States, 2003-2005**

Variety and State	Utilized Production			Price per Pound		
	2003 <i>1,000 Pounds</i>	2004 <i>1,000 Pounds</i>	2005 <i>1,000 Pounds</i>	2003 <i>Dollars</i>	2004 <i>Dollars</i>	2005 <i>Dollars</i>
Improved Varieties ¹						
AL	7,000	1,000	3,200	0.940	1.210	1.160
AZ	22,500	14,000	22,000	1.040	1.850	1.600
AR	1,400	1,000	1,100	1.100	1.400	1.400
CA	3,700	3,500	3,900	1.420	2.210	1.800
FL	500	400	300	1.000	1.500	1.400
GA	60,000	42,000	72,000	1.000	1.770	1.320
LA	4,000	2,500	1,000	1.080	1.400	1.750
MS	4,800	700	800	0.860	1.300	1.900
MO ²			200			1.880
NM	55,000	39,000	65,000	1.280	2.280	1.700
NC	2,200	70	1,650	0.850	2.000	1.000
OK	1,500	6,000	6,000	1.120	1.600	1.900
SC	3,300	800	1,500	0.850	1.800	1.090
TX	37,000	28,000	50,000	1.110	1.840	1.590
US	202,900	138,970	228,650	1.100	1.920	1.540
Native and Seedling						
AL	1,000	100	800	0.690	0.840	0.840
AR	2,400	700	1,200	0.720	1.200	1.100
FL	1,600	100	700	0.600	0.950	0.850
GA	15,000	3,000	8,000	0.640	1.240	0.800
KS	2,000	1,800	3,200	0.870	1.750	1.300
LA	16,000	6,500	4,000	0.680	0.950	1.000
MS	2,200	300	200	0.500	0.800	1.200
MO ²			2,400			1.240
NC	300	30	350	0.500	1.500	0.800
OK	4,500	22,000	15,000	0.800	1.350	1.200
SC	1,200	300	700	0.720	1.400	0.820
TX	33,000	12,000	15,000	0.690	1.270	1.090
US	79,200	46,830	51,550	0.683	1.280	1.080
All Pecans						
AL	8,000	1,100	4,000	0.909	1.180	1.100
AZ	22,500	14,000	22,000	1.040	1.850	1.600
AR	3,800	1,700	2,300	0.860	1.320	1.240
CA	3,700	3,500	3,900	1.420	2.210	1.800
FL	2,100	500	1,000	0.695	1.390	1.020
GA	75,000	45,000	80,000	0.928	1.730	1.270
KS	2,000	1,800	3,200	0.870	1.750	1.300
LA	20,000	9,000	5,000	0.760	1.080	1.150
MS	7,000	1,000	1,000	0.747	1.150	1.760
MO ²			2,600			1.290
NM	55,000	39,000	65,000	1.280	2.280	1.700
NC	2,500	100	2,000	0.808	1.850	0.965
OK	6,000	28,000	21,000	0.880	1.400	1.400
SC	4,500	1,100	2,200	0.815	1.690	1.000
TX	70,000	40,000	65,000	0.912	1.670	1.470
US	282,100	185,800	280,200	0.984	1.760	1.450

¹ Budded, grafted, or topworked varieties.

² Estimates began in 2005.

**Pecans: Value of Production by Variety,
State, and United States, 2003-2005**

Variety and State	Value of Production		
	2003 <i>1,000 Dollars</i>	2004 <i>1,000 Dollars</i>	2005 <i>1,000 Dollars</i>
Improved Varieties ¹			
AL	6,580	1,210	3,712
AZ	23,400	25,900	35,200
AR	1,540	1,400	1,540
CA	5,254	7,735	7,020
FL	500	600	420
GA	60,000	74,340	95,040
LA	4,320	3,500	1,750
MS	4,128	910	1,520
MO ²			376
NM	70,400	88,920	110,500
NC	1,870	140	1,650
OK	1,680	9,600	11,400
SC	2,805	1,440	1,635
TX	41,070	51,520	79,500
US	223,547	267,215	351,263
Native and Seedling			
AL	690	84	672
AR	1,728	840	1,320
FL	960	95	595
GA	9,600	3,720	6,400
KS	1,740	3,150	4,160
LA	10,880	6,175	4,000
MS	1,100	240	240
MO ²			2,976
NC	150	45	280
OK	3,600	29,700	18,000
SC	864	420	574
TX	22,770	15,240	16,350
US	54,082	59,709	55,567
All Pecans			
AL	7,270	1,294	4,384
AZ	23,400	25,900	35,200
AR	3,268	2,240	2,860
CA	5,254	7,735	7,020
FL	1,460	695	1,015
GA	69,600	78,060	101,440
KS	1,740	3,150	4,160
LA	15,200	9,675	5,750
MS	5,228	1,150	1,760
MO ²			3,352
NM	70,400	88,920	110,500
NC	2,020	185	1,930
OK	5,280	39,300	29,400
SC	3,669	1,860	2,209
TX	63,840	66,760	95,850
US	277,629	326,924	406,830

¹ Budded, grafted, or topworked varieties.

² Estimates began in 2005.

Definition of Terms

Apples, Commercial Crop refers to orchards of 100 or more bearing age trees.

Bearing Acreage - An orchard, grove, or vineyard is considered bearing when it reaches an age when it can normally be expected to produce a commercially significant quantity of the crop. Bearing age is a function of many factors including variety, rootstock, year planted, etc. Bearing acreage is primarily based upon periodic orchard surveys. In non-survey years, bearing acreage is based on trends, county extension service data, end-of-year production surveys, and other indications.

Prices are a marketing year average for all methods of sale. For a crop sold for both fresh market and processing, the **Marketing Year Average Price (MYA)** is a weighted average of the fresh and processing price.

Prices for fresh fruit are the average prices producers receive at the point of first sale. This is commonly referred to as the **average price as sold**. Since the point of first sale is not the same for all producers, prices for the various methods of sale are weighted by the proportionate quantity sold. For example, if in a given State part of the fruit is sold F.O.B. packed by growers, part is sold as bulk fruit at the packinghouse door, and some is sold retail at roadside stands, the fresh fruit **average price as sold** is a weighted average of the average price for each method of sale. The exception is fresh fruit sales in California, Washington, and New York (apples only) which are equivalent returns at packinghouse door. The equivalent packinghouse returns represent adjusted prices.

F.O.B. packed prices are adjusted to an equivalent incoming packinghouse door price by subtracting all costs that accumulate between the incoming packinghouse door and the F.O.B. price. These costs include grading, packing, inspecting fees, selling, and other costs.

Prices for fruit sold for processing are equivalent returns for fruit delivered to the processing plant door except for cranberries, California olives, and clingstone peaches which are priced at the first delivery point.

Crop value estimates in this report cover the marketing season or crop year and should not be confused with cash receipts from these crops which are on a calendar year.

Total Production is the quantity actually harvested plus quantities which would have been acceptable for fresh market or processing but were not harvested because of economic or natural reasons.

Unutilized Production is the difference between total and utilized production which is marketable fruit not harvested for economic or natural reasons and harvested fruit not sold or utilized.

Harvested not sold is fruit of marketable quality that was picked but not sold for various reasons. Harvested not sold amounts up to 2 percent of total production are considered normal seasonal losses and are excluded from total production.

Unharvested Production is marketable fruit produced, but not harvested for various reasons. Unharvested amounts up to 2 percent of total production are considered normal seasonal losses and are excluded from total production.

Utilization refers to first utilization, not necessarily final utilization. For example, frozen fruit includes some fruit that may be later used for making preserves. Grade-outs for fresh market fruit which are processed are included in the processing quantity. Fruit graded-out from canning or freezing and utilized for juice is included with juice.

Utilized Production is the amount sold plus the quantities used at home or held in storage.

Yield per Acre is based on total production which includes unharvested production and fruit harvested but not sold due to marketing conditions.

State Value of Utilized Production and MYA Price Computations

The following procedure is used to compute State Values of Utilized Production and MYA Prices:

Fresh Market Value = Fresh Market MYA
 Times
 Fresh Market Utilization

Process Market Value = Process Market MYA
 Times
 Process Market Utilization

"All" Sales Value = Fresh Market Value
 Plus
 Process Market Value

"All" Sales MYA = "All" Sales Value
 Divided By
 "All" Sales Utilization

For commodities with components not identified by market channel, substitute breakdown name for fresh/processing market and use the same procedure.

U.S. MYA Price Computations

The following procedure is used to compute the U.S. MYA Prices:

Fresh Market MYA = Fresh Market Value For All States
 Divided By
 Fresh Market Utilization For All States

Process Market MYA = Process Market Value For All States
 Divided By
 Process Market Utilization For All States

"All" Sales MYA = Sales Value For All States
 Divided By
 Sales Utilization For All States

Marketing Seasons for Noncitrus Fruits ¹

Apples:

All South Atlantic States, plus AR, CA, IL, IN, KY, MO, NM, TN June - May
OR, WA August - July
All other States July - June

Apricots:

Fresh Fruit May 25 - August 20
Canning June 15 - August 15
Dried (CA) June 20 - August 20

Avocados:

CA November 1 through November 30 the following year
FL June 20 - February 28
HI January 1 - December 31 (peak harvest March 1 - April 30)

Bananas: January 1 - December 31

Cherries, Sweet: May 1 - August 15

Cherries, Tart: June 15 - August 20

Cranberries: September 5 - December 20

Dates: August 15 - March 15

Figs:

Fresh Fruit June 5 - October 31
Canning August 1 - October 15
Dried (CA) June 20 - October 31

Grapes:

Fresh (CA) May 25 - April 30
Fresh (AZ) June 5 - July 15
Fresh (All other States) July 10 - October 31
Crushed for Juice, Wine, or Brandy August 1 - December 15
Dried for Raisins (CA) September 1 - May 31

Guavas: January 1 - December 31 (peak harvest September 1 - October 31)

Kiwifruit: November 1 - April 30

Nectarines: June 10 - August 31

¹See footnote on next page.

Marketing Seasons for Noncitrus Fruits ¹ (continued)

Olives:	September 25 - March 15
Papayas:	January 1 - December 31
Peaches:	
Fresh (GA and SC)	May 20 - August 31
Fresh (Other South Atlantic States, South Central States, CA)	June 1 - September 30
Fresh(New England States, ID, MI, NY)	August 1 - September 30
Fresh (All other States)	July 1 - September 30
Canning (CA)	July 1 - September 10
Dried (CA)	August 1 - October 10
Pears:	
Fresh (CA)	July 1 - April 30
Fresh (WA and OR)	August 10 - July 31
Fresh (Other States)	July 1 - December 15
Canning and Dried (CA, OR, WA)	August 1 - November 30
Pineapples:	January 1 - December 31 (peak harvest March 1 - July 31)
Plums:	
Fresh (CA)	May 25 - September 30
Canning (CA)	June 1 - September 30
Prunes, Dried (CA):	August 1 - April 30
Prune and Plums:	
Fresh and Canning (ID, MI, OR, WA)	August 10 - October 20

Marketing Seasons for Tree Nuts ¹

Almonds:	August 5 - November 15
Hazelnuts (Filberts):	October 1 - September 30
Macadamia Nuts:	January 1 - December 31 (peak harvest August 1 - December 31)
Pecans:	September 30 - March 15
Pistachios:	September 1 - October 31
Walnuts:	September 15 - December 31

¹ For detail by States, see Agricultural Handbook No. 186, "Fruits and Tree Nuts, Blooming, Harvesting, and Marketing Dates," Dec 1975.

Reliability of July Noncitrus Fruit Production Estimates

Reliability: To assist users in evaluating the reliability of the July noncitrus fruit total production estimates, the "Root Mean Square Error," a statistical measure based on past performance, is computed. The deviation between the first July total production estimate and the final estimate is expressed as a percentage of the final estimate. The average of squared percentage deviations for the latest 20-year period is computed. The square root of the average becomes statistically the "Root Mean Square Error." Probability statements can be made concerning expected differences in the current estimate relative to the final end-of-season estimate, assuming that factors affecting this year's estimate are not different from those influencing recent years. For example, the "Root Mean Square Error" for the July apple total production estimate is 1.2 percent. This means that chances are 2 out of 3 that the current production estimate will not be above or below the final estimate by more than 1.2 percent. Chances are 9 out of 10 (90 percent confidence level) that the difference will not exceed 2.1 percent.

Also, shown in the following table is a 20-year record for selected crops of the differences between the first July total production estimate and the final estimate. Using apples again as an example, changes between the first July estimate and the final estimate during the last 20 years have averaged 50.3 thousand tons, ranging from 13.5 thousand tons to 129.5 thousand tons. The first July estimate has been below the final estimate 7 times and above 13 times. This does not imply that the July estimate this year is likely to understate or overstate the final production.

Reliability of Selected Noncitrus Fruit Estimates

Crop	Unit	Root Mean Square Error		20-Year Record of Differences Between Initial Estimate and Final Estimate					
		Percent	90 Percent Confidence Interval	Quantity			Years		
				Average	Smallest	Largest	Below Final	Above Final	
				<i>1,000</i>	<i>1,000</i>	<i>1,000</i>	<i>Number</i>	<i>Number</i>	
Apples	Tons	1.2	2.1	50.3	13.5	129.5	7	13	
Grapes	Tons	0.5	0.8	16.8	0.0	83.0	13	5	
Peaches	Tons	1.2	2.0	11.4	0.0	25.1	7	11	
Pears	Tons	1.4	2.4	8.2	0.2	35.0	7	13	

Information Contacts

Listed below are the commodity specialists in the Crops Branch of the National Agricultural Statistics Service to contact for additional information.

Greg Thessen, Acting Chief	(202) 720-2127
Field Crops Section	
Greg Thessen, Head	(202) 720-2127
Shiela Corley - Cotton, Cotton Ginnings	(202) 720-5944
Scott Cox - Wheat, Rye	(202) 720-8068
Ty Kalas - Corn, Proso Millet, Flaxseed	(202) 720-9526
Dennis Koong - Peanuts, Rice	(202) 720-7688
Jason Lamprecht - Soybeans, Sunflower, Other Oilseeds	(202) 720-7369
Travis Thorson - Hay, Oats, Sorghum	(202) 690-3234
Brian Young - Crop Weather, Barley, Sugar Crops	(202) 720-7621
Fruit, Vegetable & Special Crops Section	
Jim Smith, Head	(202) 720-2127
Leslie Colburn - Berries, Grapes, Maple Syrup, Tobacco	(202) 720-7235
Debbie Flippin - Fresh and Processing Vegetables, Onions, Strawberries	(202) 720-2157
Rich Holcomb - Citrus, Tropical Fruits	(202) 720-5412
Doug Marousek - Floriculture, Nursery, Nuts	(202) 720-4215
Dan Norris - Austrian Winter Peas, Dry Edible Peas, Lentils, Mint, Mushrooms, Peaches, Pears, Wrinkled Seed Peas	(202) 720-3250
Terry O'Connor - Apples, Apricots, Cherries, Cranberries, Plums, Prunes	(202) 720-4288
Kim Ritchie - Hops	(360) 902-1940
Cathy Scherrer - Dry Beans, Potatoes, Sweet Potatoes	(202) 720-4285

ACCESS TO REPORTS!!

For your convenience, there are several ways to obtain NASS reports, data products, and services:

INTERNET ACCESS

All NASS reports are available free of charge on the worldwide Internet. For access, connect to the Internet and go to the NASS Home Page at: www.nass.usda.gov.

E-MAIL SUBSCRIPTION

All NASS reports are available by subscription free of charge direct to your e-mail address. Starting with the NASS Home Page at www.nass.usda.gov, under the right navigation, *Receive reports by Email*, click on **National** or **State**. Follow the instructions on the screen.

PRINTED REPORTS OR DATA PRODUCTS

CALL OUR TOLL-FREE ORDER DESK: 800-999-6779 (U.S. and Canada)
Other areas, please call 703-605-6220 FAX: 703-605-6900
(Visa, MasterCard, check, or money order acceptable for payment.)

ASSISTANCE

For **assistance** with general agricultural statistics or further information about NASS or its products or services, contact the **Agricultural Statistics Hotline** at **800-727-9540**, 7:30 a.m. to 4:00 p.m. ET, or e-mail: nass@nass.usda.gov.

The U.S. Department of Agriculture (USDA) prohibits discrimination in all its programs and activities on the basis of race, color, national origin, age, disability, and where applicable, sex, marital status, familial status, parental status, religion, sexual orientation, genetic information, political beliefs, reprisal, or because all or part of an individual's income is derived from any public assistance program. (Not all prohibited bases apply to all programs.) Persons with disabilities who require alternative means for communication of program information (Braille, large print, audiotape, etc.) should contact USDA's TARGET Center at (202) 720-2600 (voice and TDD).

To file a complaint of discrimination, write to USDA, Director, Office of Civil Rights, 1400 Independence Avenue, S.W., Washington, D.C. 20250-9410, or call (800) 795-3272 (voice) or (202) 720-6382 (TDD). USDA is an equal opportunity provider and employer.