



United States
Department of
Agriculture

National
Agricultural
Statistics
Service



Noncitrus Fruits and Nuts 2006 Preliminary Summary

January 2007

Fr Nt 1-3 (07)

USDA



Contents

	Page
Noncitrus Fruits and Tree Nuts	
Bearing Acreage, U.S	7
Bearing Acreage and Yield per Acre by Crop	4
Narrative	3
Price and Value by Crop	6
Production Utilization, U.S.	7
Total and Utilized Production by Crop.	5
Noncitrus Fruits	
Apples, Commercial Crop	10, 64, 68
Apricots	20, 26, 27, 66, 70
Avocados	20
Bananas	62
Berries (excluding strawberries)	30, 67
California Dry Fruits	27
Cherries, Sweet	36, 40, 66
Cherries, Tart	38, 40, 65
Cranberries	42, 65
Dates	20
Figs	22, 26, 27, 70
Grapes	27, 44, 66, 69, 71
Guavas	62
Hawaii Crops	62
Kiwifruit	22, 66
Nectarines	22, 65
Olives	22, 26
Papayas	62
Peaches	27, 50, 65, 69, 71
Pears	27, 58, 66, 69, 70
Pineapples	62
Plums	22, 66, 70
Prunes (dried basis)	24, 27, 66
Prunes and Plums	24, 26, 66
Strawberries	28
Unutilized Production	64
Tree Nuts	
Almonds	72
Hazelnuts	72
Macadamia Nuts	72
Pecans	74, 76
Pistachios	72
Walnuts	72
Definition of Terms	78
Information Contacts	83
Marketing Seasons	80
Reliability of Production Data in this Report	82
State Value of Utilized Production Computation	79
U.S. MYA Price Computation	79

This page intentionally left blank.

2006 Noncitrus Fruit Utilized Production Down 7 Percent, Value Up 5 Percent

In 2006, the Nation's utilized production of the leading noncitrus fruit crops totaled 16.7 million tons, down 7 percent from the comparable 2005 utilized production. Utilized production increased from 2005 for prunes and plums (ID, MI, OR, and WA), California prunes, Maine wild blueberries, sweet cherries, cultivated blueberries, boysenberries, California all raspberries, cranberries, apples, strawberries, and pears.

The value of utilized production for noncitrus fruit crops totaled 10.3 billion dollars, up 5 percent from 2005. The value of utilized production for California prunes increased 74 percent, prunes and plums (ID, MI, OR, and WA) increased 72 percent, Maine wild blueberries are up 52 percent, cultivated blueberries increased 45 percent, apples are up 25 percent, and California all raspberries increased 24 percent. However, the utilized value of production for olives decreased 77 percent, loganberries are down 47 percent, red raspberries decreased 44 percent, apricots decreased 26 percent, and tart cherries are down 16 percent.

Highlights

Utilized apple production for 2006 is estimated at 9.98 billion pounds, up 4 percent from 2005. Utilized production for Washington was unchanged from last year's 5.70 billion pounds, while New York's and Michigan's utilized production increased 24 and 18 percent, respectively. Frost during bloom in Washington was a problem for some growers and protective measures were implemented in many areas. Hail, heavy rains, and high winds during early July caused major damage to the apple crop in north central Washington. In New York, abundant rainfall across the state increased disease pressure and severe weather during the fall caused significant losses to some orchards. These adverse weather conditions resulted in higher than normal unharvested production. In Michigan, freezing temperatures in the northwest during April and cold temperatures in the western part of the state during pollination greatly reduced fruit set. However, plentiful rain in August and September aided fruit sizing.

Utilized grape production for 2006 totaled 6.33 million tons, down 19 percent from the 2005 crop. The California crop, which accounts for 90 percent of the 2006 U.S. utilized grape production, is down 18 percent from the previous year. Also for California, wine type and table type production each decreased 20 percent, while raisin type production fell 14 percent from 2005. Utilized production decreased from 2005 in all grape estimating States except Arkansas, Missouri, North Carolina, Oregon, and Virginia. Spring freezes in the Midwest significantly lowered utilized production in the region.

Utilized peach production in 2006 is estimated at 987,080 tons, down 14 percent from the previous year and 20 percent below 2004. The California crop, accounting for 72 percent of the U.S. utilized peach production, is down 18 percent from 2005. For California, the Clingstone peach estimate is down 26 percent and the Freestone estimate is down 8 percent from 2005.

Utilized pear production for 2006 is 830,120 tons, up 1 percent from the previous year. Washington, the top producing State, utilized 367,000 tons, down 11 percent from 2005. California, the second largest producer at 229,000 tons, is up 13 percent from the previous season. Utilized pear production in Oregon, the third largest producing State, is 208,000 tons, up 9 percent from 2005.

2006 U.S. Nut Production Up 7 Percent, Value Down 14 Percent

The 2006 U.S. nut production is estimated at 1.56 million tons (in-shell basis), a 7 percent increase from 2005. The almond crop totaled 932,700 tons, up 20 percent from a year earlier. Walnut production for 2006, at 350,000 tons, is down 1 percent from the previous year. The pistachio crop totaled 119,000 tons, 16 percent less than 2005. Pecan production for 2006 is estimated at 94,450 tons, a 33 percent decrease from 2005. Hazelnut production, at 41,000 tons, is up 49 percent from the previous year. Macadamia nut production, at 27,500 tons, is up 2 percent.

The 2006 value of U.S. utilized nut production is estimated at 3.59 billion dollars, down 14 percent from the revised 2005 value. The almond crop is valued at 2.20 billion dollars, down 13 percent from 2005. Pistachio value for 2006, at 457 million dollars, is 21 percent less than last year. The value of the pecan crop decreased 26 percent, to 301 million dollars. Hazelnut value, at 45.1 million dollars, is 27 percent less than the previous year. The macadamia nut crop is valued at 38.5 million dollars, down 12 percent.

**Noncitrus Fruits and Nuts: Bearing Acreage and Yield per Acre
by Crop, United States, 2004-2006**

Crop	Bearing Acreage			Yield per Acre		
	2004	2005	2006	2004	2005	2006
	<i>Acres</i>	<i>Acres</i>	<i>Acres</i>	<i>Tons</i>	<i>Tons</i>	<i>Tons</i>
Noncitrus Fruits						
Apples	385,460	379,560	377,490	13.60	12.80	13.40
Apricots	17,340	15,840	15,540	5.83	5.15	2.88
Avocados ¹	68,670	67,600		2.61	4.62	
Bananas (HI) ²	1,000	980	1,000	8.25	10.70	8.50
Blackberries (OR) ^{2 3}	6,300	6,500	6,900	3.80	3.73	3.00
Blueberries						
Cultivated ²	44,430	48,710	52,820	2.56	2.45	2.61
Wild (ME) ⁴						
Boysenberries ²	1,050	910	920	2.95	2.80	3.23
Loganberries (OR) ²	60	60	60	1.42	1.84	1.00
Raspberries ²						
Black (OR)	1,100	1,300	1,500	1.08	1.63	1.34
Red	10,900	11,400	11,500	3.03	3.40	2.77
All (CA)	4,100	4,200	4,300	11.00	12.00	13.50
Cherries, Sweet	78,275	79,140	81,300	3.62	3.17	3.61
Cherries, Tart	36,950	37,050	37,200	2.88	3.65	3.55
Cranberries	39,200	39,000	38,900	7.88	8.01	8.82
Dates (CA)	5,500	5,800	5,400	3.13	3.07	3.15
Figs (CA)	12,800	12,800	11,500	3.99	3.84	3.63
Grapes	933,100	934,850	937,200	6.69	8.36	6.77
Guavas (HI) ^{2 5}	525	620		7.70	6.55	
Kiwifruit (CA)	4,500	4,500	4,000	5.93	8.27	5.85
Nectarines	36,500	37,900	36,900	7.37	6.61	6.46
Olives (CA)	32,000	32,000	31,000	3.36	4.44	0.76
Papayas (HI) ²	1,235	1,480	1,565	14.50	11.10	9.05
Peaches	145,710	139,630	134,460	8.97	8.48	7.51
Pears	63,150	60,550	59,850	13.90	13.60	14.10
Pineapples (HI) ⁶	13,000	14,000	13,900			
Plums (CA)	36,000	36,000	36,000	4.33	4.75	4.39
Prunes (CA)	70,000	67,000	67,000	2.06	4.42	7.94
Prunes & Plums ⁷	3,760	3,530	3,400	6.65	2.58	6.26
Strawberries ²	51,400	52,200	53,280	21.50	22.20	22.60
Total	2,104,015	2,095,110	2,024,885			
Tree Nuts						
Almonds (CA) ⁸	570,000	580,000	580,000	1.52	1.34	1.61
Hazelnuts (OR)	28,400	28,300	28,300	1.32	0.98	1.45
Macadamias	17,800	18,000	17,800	1.59	1.50	1.55
Pecans ⁴						
Pistachios	93,000	105,000	110,000	1.87	1.35	1.08
Walnuts (CA)	214,000	215,000	215,000	1.52	1.65	1.63
Total	923,200	946,300	951,100			

¹ Estimates for 2006 will be published on July 6, 2007.

² Harvested acreage. Yield based on utilized production.

³ Cultivated.

⁴ Bearing acreage and yield not calculated.

⁵ Estimates for 2006 will be published on May 11, 2007.

⁶ Acreage is total acres in crop, not harvested acreage. Yield is not estimated.

⁷ ID, MI, OR, and WA.

⁸ Yield based on in-shell basis. Shelling ratios are: 2004 - 0.580; 2005 - 0.590; 2006 - 0.587.

**Noncitrus Fruits and Nuts: Total and Utilized Production
by Crop, United States, 2004-2006**

Crop	Total Production			Utilized Production		
	2004	2005	2006	2004	2005	2006
	<i>1,000 Tons Fresh Equivalent</i>	<i>1,000 Tons Fresh Equivalent</i>	<i>1,000 Tons Fresh Equivalent</i>	<i>1,000 Tons Fresh Equivalent</i>	<i>1,000 Tons Fresh Equivalent</i>	<i>1,000 Tons Fresh Equivalent</i>
Noncitrus Fruits						
Apples	5,220.3	4,860.0	5,036.1	5,180.7	4,808.8	4,992.5
Apricots	101.1	81.7	44.7	92.6	76.6	44.7
Avocados ¹	179.4	312.4		179.4	312.4	
Bananas (HI) ²				8.3	10.5	8.5
Blackberries (OR) ³	24.0	24.5	20.8	24.0	24.2	20.7
Blueberries						
Cultivated	114.4	119.3	138.0	113.8	119.1	137.8
Wild (ME)	23.0	30.1	37.3	23.0	30.1	37.3
Boysenberries	3.1	2.6	3.0	3.1	2.6	3.0
Loganberries (OR)	0.1	0.1	0.1	0.1	0.1	0.1
Raspberries						
Black (OR)	1.2	2.1	2.0	1.2	2.1	2.0
Red	33.1	38.8	31.9	33.1	38.8	31.9
All (CA)	45.0	50.4	58.1	45.0	50.4	58.1
Cherries, Sweet	283.1	250.8	293.6	279.2	243.6	286.9
Cherries, Tart	106.5	135.2	131.9	106.5	134.2	125.2
Cranberries	308.8	312.2	342.9	308.4	312.2	337.6
Dates (CA)	17.2	17.8	17.0	17.2	17.8	17.0
Figs (CA)	51.1	49.2	41.7	51.1	49.2	41.7
Grapes	6,240.0	7,813.7	6,346.3	6,229.9	7,810.5	6,335.0
Guavas (HI) ^{2 4}				4.1	4.1	
Kiwifruit (CA)	26.7	37.2	23.4	24.7	36.2	22.8
Nectarines	269.0	250.5	238.3	252.0	250.5	238.3
Olives (CA)	107.5	142.0	23.5	107.5	142.0	23.5
Papayas (HI) ²				17.9	16.5	14.2
Peaches	1,307.1	1,184.6	1,010.1	1,229.8	1,145.1	987.1
Pears	878.3	823.3	841.0	873.4	821.7	830.1
Pineapples (HI) ²				220.0	212.0	188.0
Plums (CA)	156.0	171.0	158.0	144.0	171.0	158.0
Prunes (CA)	143.9	295.9	532.1	141.0	286.7	505.8
Prunes & Plums ⁵	25.0	9.1	21.3	18.9	9.1	19.0
Strawberries ²				1,106.9	1,161.1	1,202.0
Total				16,836.8	18,299.2	16,668.8
	<i>1,000 Tons In-Shell Equivalent</i>	<i>1,000 Tons In-Shell Equivalent</i>	<i>1,000 Tons In-Shell Equivalent</i>	<i>1,000 Tons In-Shell Equivalent</i>	<i>1,000 Tons In-Shell Equivalent</i>	<i>1,000 Tons In-Shell Equivalent</i>
Tree Nuts ²						
Almonds (CA)				866.4	775.4	932.7
Hazelnuts (OR)				37.5	27.6	41.0
Macadamias (HI)				28.3	27.0	27.5
Pecans				92.9	140.1	94.5
Pistachios (CA)				173.5	141.5	119.0
Walnuts (CA)				325.0	355.0	350.0
Total				1,523.6	1,466.6	1,564.7

¹ Estimates for 2006 will be published on July 6, 2007.

² Only utilized production estimated.

³ Cultivated.

⁴ Estimates for 2006 will be published on May 11, 2007.

⁵ ID, MI, OR, and WA.

**Noncitrus Fruits and Nuts: Price and Value
by Crop, United States, 2004-2006**

Crop	Unit ¹	Price			Value of Utilized Production		
		2004	2005	2006	2004	2005	2006
		<i>Dollars</i>	<i>Dollars</i>	<i>Dollars</i>	<i>1,000 Dollars</i>	<i>1,000 Dollars</i>	<i>1,000 Dollars</i>
Noncitrus Fruits							
Apples	Lb	0.135	0.175	0.210	1,403,001	1,680,747	2,099,129
Apricots	Ton	378.00	520.00	662.00	35,012	39,880	29,580
Avocados ²	Ton	1,620.00	1,120.00		291,244	350,808	
Bananas (HI)	Lb	0.490	0.439	0.490	8,085	9,175	8,330
Blackberries (OR) ³	Lb	0.711	0.762	0.857	34,057	36,867	35,380
Blueberries	Lb						
Cultivated	Lb	1.210	1.440	1.810	275,963	342,311	497,702
Wild (ME)	Lb	0.456	0.656	0.805	20,970	39,430	60,020
Boysenberries	Lb	1.160	1.400	1.200	7,168	7,158	7,128
Loganberries (OR)	Lb	0.771	0.855	0.833	131	188	100
Raspberries	Lb						
Black (OR)	Lb	2.250	2.460	2.440	5,357	10,418	9,780
Red	Lb	0.782	0.583	0.398	51,723	45,184	25,346
All (CA)	Lb	2.090	1.990	2.150	188,100	200,592	249,615
Cherries, Sweet	Ton	1,570.00	1,990.00	1,700.00	437,133	484,348	487,482
Cherries, Tart	Lb	0.328	0.238	0.213	69,941	63,936	53,453
Cranberries	Bbl	32.90	34.50	37.20	202,670	215,266	251,457
Dates (CA)	Ton	1,310.00	1,560.00	1,640.00	22,532	27,768	27,880
Figs (CA) ²	Ton	396.00	513.00		20,214	25,256	
Grapes	Ton	483.00	447.00	499.00	3,009,945	3,489,115	3,162,007
Guavas (HI) ²	Lb	0.144	0.139		1,166	1,126	
Kiwifruit (CA) ²	Ton	809.00	620.00		19,977	22,461	
Nectarines	Ton	342.00	507.00	521.00	86,184	126,942	124,200
Olives (CA)	Ton	564.00	564.00	773.00	60,643	80,097	18,174
Papayas (HI)	Lb	0.345	0.342	0.391	12,361	11,241	11,067
Peaches	Ton	375.00	447.00	520.00	461,624	511,520	513,438
Pears	Ton	335.00	358.00	391.00	292,969	293,863	324,885
Pineapples (HI)	Ton	378.00	374.00	402.00	83,104	79,288	75,542
Plums (CA)	Ton	516.00	541.00	698.00	74,347	92,463	110,217
Prunes (CA)	Ton	1,500.00	1,470.00	1,490.00	72,000	138,180	240,784
Prunes & Plums ⁴	Ton	360.00	562.00	461.00	6,802	5,085	8,763
Strawberries	Cwt	58.50	60.10	63.00	1,295,464	1,395,724	1,514,998
Total ⁵					8,549,887	9,826,437	10,333,919
Almonds (CA)							
(Shelled)	Lb	2.210	2.810	2.050	2,189,005	2,525,909	2,198,215
Hazelnuts (OR)	Ton	1,440.00	2,240.00	1,100.00	54,000	61,824	45,100
Macadamias (HI)	Lb	0.730	0.810	0.700	41,245	43,740	38,500
Pecans	Lb	1.760	1.450	1.590	326,924	406,920	301,242
Pistachios (CA)	Lb	1.340	2.050	1.920	464,980	580,150	456,960
Walnuts (CA) ²	Ton	1,390.00	1,570.00		451,750	557,350	
Total ⁵					3,527,904	4,175,893	3,589,517

¹ Ton refers to the 2,000 lb. short ton.

² Estimates for 2006 will be published on July 6, 2007.

³ Cultivated.

⁴ ID, MI, OR, and WA.

⁵ Includes estimated 2006 value of production for crops noted by footnote 2. Used 2005 price to compute the 2006 fig, kiwifruit, and walnut value. The 2005 values for avocados and guavas are carried forward.

**Fruits and Nuts: Bearing Acreage,
United States, 2004-2006**

Year	Citrus Fruits ¹	Major Deciduous Fruits ²	Miscellaneous Noncitrus ³	Nuts ⁴	Total
	<i>Acres</i>	<i>Acres</i>	<i>Acres</i>	<i>Acres</i>	<i>Acres</i>
2004	985,300	1,806,245	297,770	923,200	4,012,515
2005	945,700	1,791,050	304,060	946,300	3,987,110
2006 ⁵	877,700	1,786,340	238,545	951,100	3,853,685

¹ Grapefruit, lemons, oranges, tangelos, tangerines, and Temples.

² Commercial apples, apricots, cherries, grapes, nectarines, peaches, pears, plums, and prunes.

³ Avocados, bananas, berries, cranberries, dates, figs, guavas, kiwifruit, olives, papayas, pineapples, and strawberries.

⁴ Almonds, hazelnuts, macadamia nuts, pistachios, and walnuts.

⁵ Preliminary. Avocados and guavas not included.

**Noncitrus Fruits: Production Utilization,
United States, 2004-2006 ¹**

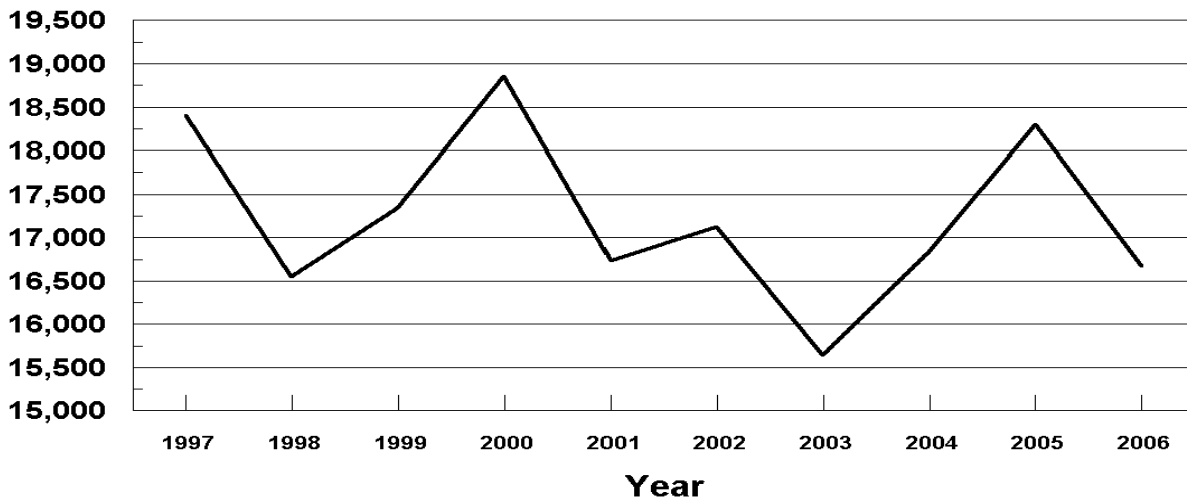
Year	Utilized Production	Fresh	Processed ²					
			Canned	Dried	Juice	Frozen	Wine	Other
	<i>1,000 Tons</i>	<i>1,000 Tons</i>	<i>1,000 Tons</i>	<i>1,000 Tons</i>	<i>1,000 Tons</i>	<i>1,000 Tons</i>	<i>1,000 Tons</i>	<i>1,000 Tons</i>
2004	16,836.8	7,177.3	1,710.9	1,424.6	1,421.4	685.4	3,818.5	290.3
2005	18,299.2	7,217.4	1,575.0	2,098.4	1,558.5	707.9	4,552.4	277.4
2006	16,668.8							

¹ 2006 is preliminary. Avocados and guavas not included. Fresh and processed tons will be published on July 6, 2007. Cranberry quantity included in utilized production, excluded from fresh and processed breakdown.

² Processed strawberries are included in frozen.

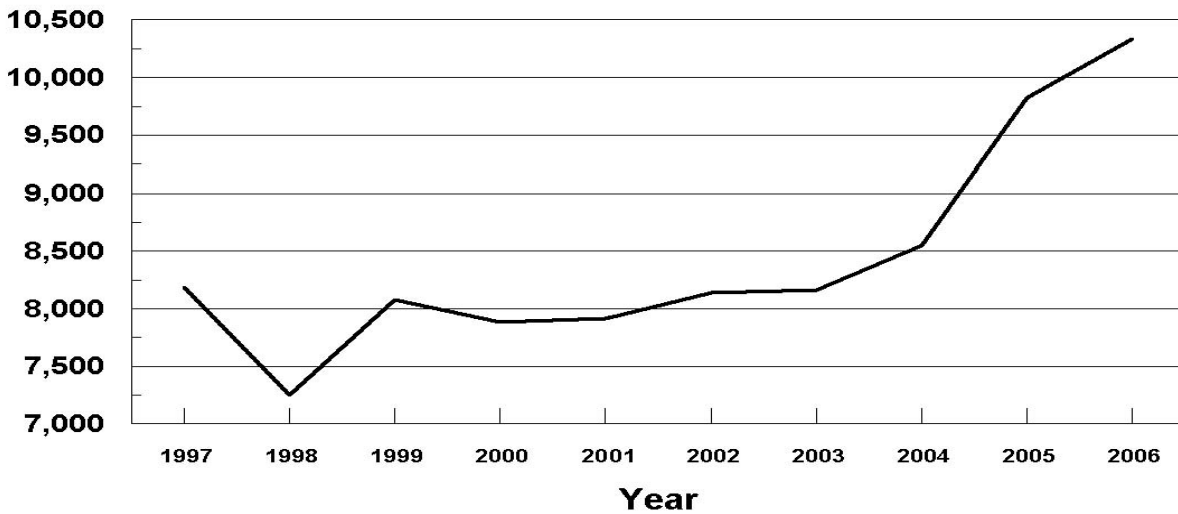
U.S. Noncitrus Fruits Utilized Production 1997-2006

(000) Tons Fresh Equivalent



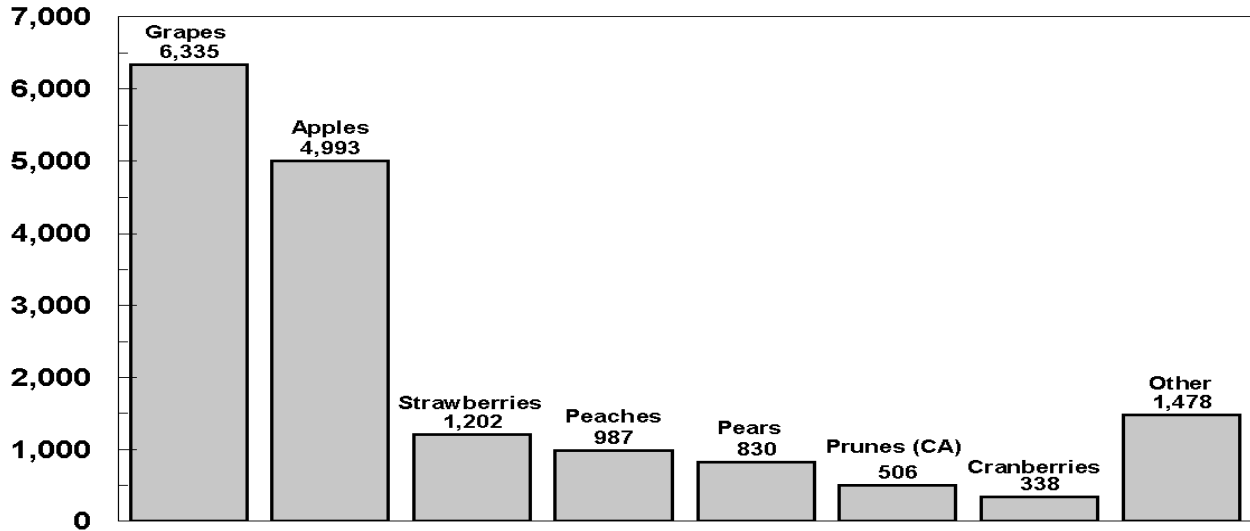
U.S. Noncitrus Fruits Value of Utilized Production 1997-2006

Million Dollars



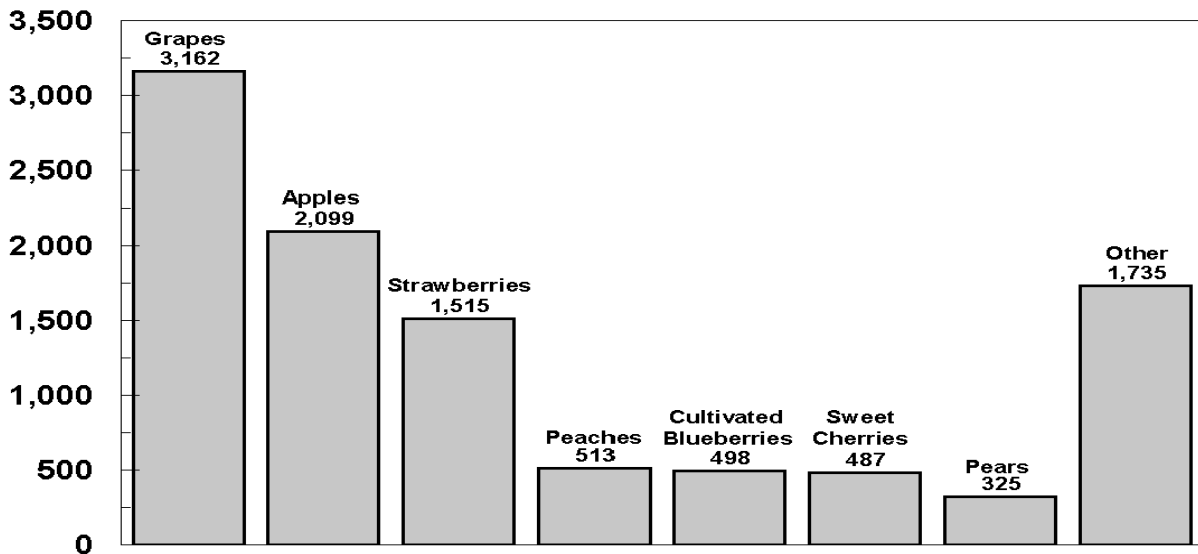
U.S. Noncitrus Fruits Utilized Production by Major Fruit, 2006

(000) Tons Fresh Equivalent



U.S. Noncitrus Fruits Value of Utilized Production by Major Fruit, 2006

Milion Dollars



**Apples, Commercial: Bearing Acreage and Yield
by State and United States, 2004-2006**

State	Bearing Acreage			Yield per Acre ¹		
	2004	2005	2006	2004	2005	2006
	<i>Acres</i>	<i>Acres</i>	<i>Acres</i>	<i>Pounds</i>	<i>Pounds</i>	<i>Pounds</i>
AZ	1,200	1,100	1,100	30,800	20,200	27,400
AR ²	550			3,450		
CA	26,000	24,000	23,000	13,700	14,800	14,100
CO	1,600	1,500	1,500	17,500	20,700	10,000
CT	2,200	2,200	2,200	8,860	7,050	7,500
GA	1,200	1,300	1,300	10,000	10,800	10,000
ID	3,400	3,100	2,800	23,500	22,600	21,400
IL	4,000	4,000	4,000	14,100	12,300	12,300
IN	4,000	4,000	4,000	15,000	12,500	13,800
IA	1,600	1,600	1,600	3,310	1,310	4,190
KS ²	290			9,660		
KY	920	860	790	8,370	6,400	8,730
ME	3,500	3,500	3,400	13,400	8,860	7,650
MD	2,400	2,400	2,400	14,200	17,100	14,200
MA	4,100	4,100	4,000	10,200	6,950	7,250
MI	40,500	40,500	40,000	18,000	18,800	22,500
MN	2,500	2,400	2,500	10,000	9,170	9,200
MO	3,900	4,100	4,100	12,300	12,000	12,900
NH	2,100	2,100	2,100	14,500	10,000	13,300
NJ	2,300	2,300	2,200	17,400	19,600	20,500
NM ²	1,500			3,070		
NY	45,000	45,000	45,000	28,400	22,900	28,400
NC	7,000	6,800	6,800	22,100	19,100	25,900
OH	7,300	7,300	7,300	12,300	13,600	14,000
OR	5,400	4,200	4,200	30,200	34,500	36,900
PA	22,100	21,800	21,000	18,300	22,900	21,900
RI	300	300	300	7,330	5,330	6,330
SC	1,000	700	600	6,000	5,710	5,000
TN	900	900	900	12,200	9,440	11,100
UT	2,000	2,000	2,000	16,000	19,000	5,000
VT	2,700	2,700	2,700	15,400	12,200	12,600
VA	15,000	15,000	15,000	20,000	18,700	18,000
WA	156,000	157,000	158,000	39,400	36,300	36,100
WV	5,000	5,000	5,000	16,200	17,400	18,000
WI	6,000	5,800	5,700	9,500	8,970	11,400
US	385,460	379,560	377,490	27,100	25,600	26,700

¹ Yield is based on total production, which includes unharvested production and fruit harvested but not sold due to market conditions.

² Estimates discontinued in 2005.

**Apples, Commercial: Total and Utilized Production
by State and United States, 2004-2006**

State	Total Production			Utilized Production		
	2004	2005	2006	2004	2005	2006
	<i>Million Pounds</i>	<i>Million Pounds</i>	<i>Million Pounds</i>	<i>Million Pounds</i>	<i>Million Pounds</i>	<i>Million Pounds</i>
AZ	37.0	22.2	30.1	37.0	22.0	30.0
AR ¹	1.9			1.1		
CA	355.0	355.0	325.0	355.0	355.0	325.0
CO	28.0	31.0	15.0	27.0	27.0	14.0
CT	19.5	15.5	16.5	18.5	15.0	16.5
GA	12.0	14.0	13.0	12.0	14.0	12.0
ID	80.0	70.0	60.0	80.0	70.0	60.0
IL	56.5	49.0	49.0	51.3	38.5	41.3
IN	60.0	50.0	55.0	58.0	40.0	48.5
IA	5.3	2.1	6.7	4.8	1.9	5.8
KS ¹	2.8			2.2		
KY	7.7	5.5	6.9	7.0	4.7	6.3
ME	47.0	31.0	26.0	43.0	29.0	25.5
MD	34.1	41.0	34.0	33.0	40.8	34.0
MA	42.0	28.5	29.0	37.0	26.0	28.0
MI	730.0	760.0	900.0	730.0	755.0	890.0
MN	25.0	22.0	23.0	19.9	16.0	17.0
MO	48.0	49.0	53.0	47.0	47.0	51.0
NH	30.5	21.0	28.0	28.0	19.5	27.5
NJ	40.0	45.0	45.0	38.0	44.0	45.0
NM ¹	4.6			2.5		
NY	1,280.0	1,030.0	1,280.0	1,280.0	1,020.0	1,260.0
NC	155.0	130.0	176.0	132.0	118.0	169.0
OH	90.0	99.0	102.0	90.0	98.0	101.0
OR	163.0	145.0	155.0	160.0	135.0	155.0
PA	405.0	500.0	460.0	400.0	495.0	457.0
RI	2.2	1.6	1.9	2.1	1.4	1.7
SC	6.0	4.0	3.0	3.0	2.5	2.0
TN	11.0	8.5	10.0	10.5	7.5	9.0
UT	32.0	38.0	10.0	31.4	35.7	9.3
VT	41.5	33.0	34.0	38.0	29.5	30.5
VA	300.0	280.0	270.0	297.0	277.0	265.0
WA	6,150.0	5,700.0	5,700.0	6,150.0	5,700.0	5,700.0
WV	81.0	87.0	90.0	80.0	83.0	88.0
WI	57.0	52.0	65.0	55.0	49.5	60.0
US	10,440.6	9,719.9	10,072.1	10,361.3	9,617.5	9,984.9

¹ Estimates discontinued in 2005.

**Apples, Commercial: Price and Value
by State and United States, 2004-2006**

State	Price per Pound			Value of Utilized Production		
	2004	2005	2006	2004	2005	2006
	<i>Dollars</i>	<i>Dollars</i>	<i>Dollars</i>	<i>1,000 Dollars</i>	<i>1,000 Dollars</i>	<i>1,000 Dollars</i>
AZ	0.153	0.240	0.192	5,656	5,275	5,773
AR ¹	0.355			390		
CA	0.149	0.210	0.235	52,975	74,718	76,485
CO	0.154	0.179	0.359	4,171	4,824	5,020
CT	0.395	0.462	0.463	7,310	6,930	7,633
GA	0.228	0.236	0.181	2,740	3,310	2,177
ID	0.118	0.179	0.223	9,464	12,503	13,400
IL	0.237	0.372	0.368	12,182	14,320	15,208
IN	0.219	0.294	0.271	12,686	11,770	13,137
IA	0.466	0.453	0.532	2,235	861	3,086
KS ¹	0.276			607		
KY	0.368	0.346	0.377	2,573	1,628	2,376
ME	0.320	0.341	0.364	13,740	9,900	9,270
MD	0.136	0.144	0.201	4,486	5,884	6,820
MA	0.381	0.448	0.437	14,108	11,659	12,235
MI	0.123	0.126	0.151	89,780	95,038	133,950
MN	0.468	0.535	0.543	9,307	8,563	9,228
MO	0.164	0.165	0.215	7,713	7,744	10,973
NH	0.301	0.310	0.338	8,420	6,045	9,300
NJ	0.151	0.313	0.310	5,740	13,779	13,949
NM ¹	0.418			1,045		
NY	0.151	0.164	0.210	193,560	167,400	264,900
NC	0.132	0.117	0.117	17,420	13,859	19,799
OH	0.276	0.286	0.316	24,831	28,069	31,932
OR	0.163	0.157	0.102	26,057	21,238	15,775
PA	0.101	0.100	0.117	40,353	49,550	53,409
RI	0.480	0.524	0.485	1,008	734	824
SC	0.108	0.172	0.186	323	430	371
TN	0.263	0.268	0.273	2,765	2,012	2,456
UT	0.268	0.159	0.267	8,415	5,671	2,487
VT	0.225	0.304	0.338	8,550	8,970	10,295
VA	0.149	0.108	0.112	44,226	29,877	29,555
WA	0.121	0.181	0.225	742,415	1,031,504	1,284,550
WV	0.091	0.084	0.084	7,250	7,010	7,360
WI	0.336	0.397	0.423	18,500	19,672	25,396
US	0.135	0.175	0.210	1,403,001	1,680,747	2,099,129

¹ Estimates discontinued in 2005.

**Apples, Commercial: Fresh Market Utilization and Price
by State and United States, 2004-2006¹**

State	Fresh Market					
	Quantity			Price per Pound ²		
	2004	2005	2006	2004	2005	2006
	<i>Million Pounds</i>	<i>Million Pounds</i>	<i>Million Pounds</i>	<i>Dollars</i>	<i>Dollars</i>	<i>Dollars</i>
AZ	3.0	5.0		0.560	0.630	
CA	165.0	160.0		0.226	0.378	
CO	18.0	14.0		0.197	0.271	
CT	15.5	13.0		0.460	0.520	
ID	40.0	35.0		0.210	0.340	
IN	39.0	26.5		0.293	0.415	
KY	6.7	4.3		0.380	0.372	
ME	35.0	24.0		0.380	0.400	
MD	10.5	17.8		0.265	0.241	
MA	31.5	22.0		0.440	0.520	
MI	240.0	265.0		0.202	0.210	
MO	33.0	27.0		0.211	0.242	
NH	18.0	12.5		0.440	0.450	
NJ	28.0	33.0		0.180	0.393	
NM ³	2.5			0.418		
NY	660.0	490.0		0.228	0.264	
NC	47.0	35.0		0.229	0.229	
OH	78.1	85.4		0.308	0.319	
OR	110.0	95.0		0.222	0.209	
PA	110.0	127.0		0.172	0.185	
SC	1.2	1.2		0.199	0.264	
UT	29.2	27.4		0.284	0.200	
VT	33.0	24.0		0.250	0.360	
VA	132.0	81.0		0.250	0.205	
WA	4,600.0	4,400.0		0.153	0.228	
WV	15.0	16.0		0.172	0.173	
WI	47.0	42.0		0.380	0.450	
Oth Sts	89.8	64.3		0.335	0.442	
US	6,638.0	6,147.4		0.181	0.244	

¹ Estimates for 2006 will be published on July 6, 2007.

² Equivalent packinghouse door returns for CA, MI, NY, and WA; price at first sale for all other States.

³ Estimates discontinued in 2005.

**Apples, Commercial: Value of Fresh Market Production
by State and United States, 2004-2006¹**

State	Fresh Market		
	Value of Production		
	2004	2005	2006
	<i>1,000 Dollars</i>	<i>1,000 Dollars</i>	<i>1,000 Dollars</i>
AZ	1,680	3,150	
CA	37,290	60,480	
CO	3,546	3,794	
CT	7,130	6,760	
ID	8,400	11,900	
IN	11,427	10,998	
KY	2,546	1,600	
ME	13,300	9,600	
MD	2,783	4,290	
MA	13,860	11,440	
MI	48,480	55,650	
MO	6,963	6,534	
NH	7,920	5,625	
NJ	5,040	12,969	
NM ²	1,045		
NY	150,480	129,360	
NC	10,763	8,015	
OH	24,055	27,243	
OR	24,420	19,855	
PA	18,920	23,495	
SC	239	317	
UT	8,293	5,480	
VT	8,250	8,640	
VA	33,000	16,605	
WA	703,800	1,003,200	
WV	2,580	2,768	
WI	17,860	18,900	
Oth Sts	30,108	28,424	
US	1,204,178	1,497,092	

¹ Estimates for 2006 will be published on July 6, 2007.

² Estimates discontinued in 2005.

**Apples, Commercial: Processed Utilization and Price
by State and United States, 2004-2006**¹

State	Processed					
	Quantity			Price per Ton		
	2004	2005	2006	2004	2005	2006
	<i>Million Pounds</i>	<i>Million Pounds</i>	<i>Million Pounds</i>	<i>Dollars</i>	<i>Dollars</i>	<i>Dollars</i>
AZ	34.0	17.0		234.00	250.00	
CA	190.0	195.0		165.00	146.00	
CO	9.0	13.0		139.00	158.00	
CT	3.0	2.0		120.00	170.00	
ID	40.0	35.0		53.20	34.50	
IN	19.0	13.5		133.00	114.00	
KY	0.3	0.4		180.00	140.00	
ME	8.0	5.0		110.00	120.00	
MD	22.5	23.0		151.00	139.00	
MA	5.5	4.0		90.20	110.00	
MI	490.0	490.0		169.00	161.00	
MO	14.0	20.0		107.00	121.00	
NH	10.0	7.0		100.00	120.00	
NJ	10.0	11.0		140.00	147.00	
NY	620.0	530.0		139.00	144.00	
NC	85.0	83.0		157.00	141.00	
OH	11.9	12.6		130.00	131.00	
OR	50.0	40.0		65.50	69.20	
PA	290.0	368.0		148.00	142.00	
SC	1.8	1.3		93.30	174.00	
UT	2.2	8.3		111.00	46.00	
VT	5.0	5.5		120.00	120.00	
VA	165.0	196.0		136.00	135.00	
WA	1,550.0	1,300.0		49.80	43.50	
WV	65.0	67.0		144.00	127.00	
WI	8.0	7.5		160.00	206.00	
Oth Sts	14.1	15.0		160.00	183.00	
US	3,723.3	3,470.1		107.00	106.00	

¹ Estimates for 2006 will be published on July 6, 2007.

**Apples, Commercial: Value of Processed Production
by State and United States, 2004-2006¹**

State	Processed		
	Value of Production		
	2004	2005	2006
	<i>1,000 Dollars</i>	<i>1,000 Dollars</i>	<i>1,000 Dollars</i>
AZ	3,976	2,125	
CA	15,685	14,238	
CO	625	1,030	
CT	180	170	
ID	1,064	603	
IN	1,259	772	
KY	27	28	
ME	440	300	
MD	1,703	1,594	
MA	248	219	
MI	41,300	39,388	
MO	750	1,210	
NH	500	420	
NJ	700	810	
NY	43,080	38,040	
NC	6,657	5,844	
OH	776	826	
OR	1,637	1,383	
PA	21,433	26,055	
SC	84	113	
UT	122	191	
VT	300	330	
VA	11,226	13,272	
WA	38,615	28,304	
WV	4,670	4,242	
WI	640	772	
Oth Sts	1,126	1,376	
US	198,823	183,655	

¹ Estimates for 2006 will be published on July 6, 2007.

**Apples, Commercial: Processed Utilization, Use, and Price
by State and United States, 2004-2006¹**

Use and State	Processed Utilization					
	Quantity			Price per Ton		
	2004	2005	2006	2004	2005	2006
	<i>Million Pounds</i>	<i>Million Pounds</i>	<i>Million Pounds</i>	<i>Dollars</i>	<i>Dollars</i>	<i>Dollars</i>
Canned						
MI	210.0	195.0		180.00	175.00	
NY	340.0	290.0		156.00	158.00	
NC	59.0	48.0		175.00	160.00	
PA	230.0	267.0		160.00	160.00	
VA	125.0	131.0		151.00	149.00	
WA	190.0	140.0		74.00	76.50	
WV	47.0	44.0		157.00	140.00	
Oth Sts	56.7	49.0		162.00	154.00	
US	1,257.7	1,164.0		149.00	150.00	
Juice & Cider						
CA	170.0	180.0		164.00	149.00	
MI	115.0	140.0		110.00	110.00	
NY	200.0	175.0		96.00	92.00	
NC	12.0	20.0		103.00	106.00	
OR	27.0	21.0		37.00	26.00	
PA	52.0	92.0		100.00	85.00	
VA	24.0	42.0		99.00	92.00	
WA	1,110.0	870.0		38.00	28.00	
WV	13.0	19.0		104.00	101.00	
Oth Sts	153.0	145.4		125.00	119.00	
US	1,876.0	1,704.4		70.50	68.20	

¹ Estimates for 2006 will be published on July 6, 2007.

**Apples, Commercial: Processed Utilization, Use, and Price
by State and United States, 2004-2006¹**

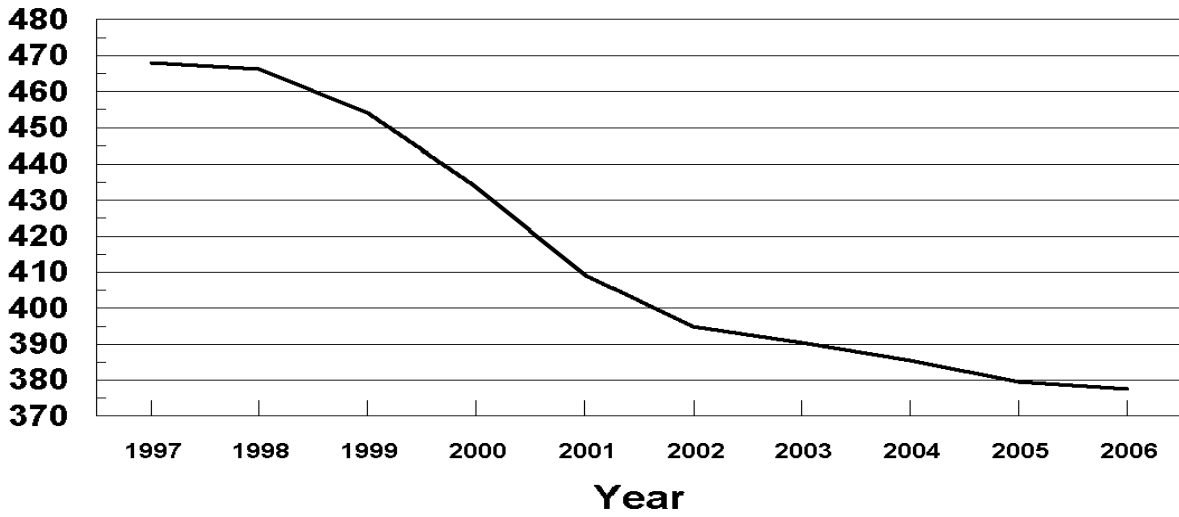
Use and State	Processed Utilization					
	Quantity			Price per Ton		
	2004	2005	2006	2004	2005	2006
	<i>Million Pounds</i>	<i>Million Pounds</i>	<i>Million Pounds</i>	<i>Dollars</i>	<i>Dollars</i>	<i>Dollars</i>
Frozen						
NY	50.0	30.0		228.00	168.00	
Oth Sts	205.8	219.4		160.00	126.00	
US	255.8	249.4		173.00	131.00	
Dried						
US	200.8	191.1		73.60	59.40	
Fresh Slices						
US	54.0	97.7		186.00	230.00	
Other ²						
MI	8.0	8.0		180.00	180.00	
NY	30.0	5.0		84.00	140.00	
Oth Sts	41.0	50.5		118.00	158.00	
US	79.0	63.5		112.00	160.00	

¹ Estimates for 2006 will be published on July 6, 2007.

² Includes vinegar, wine, and fresh slices for pie making.

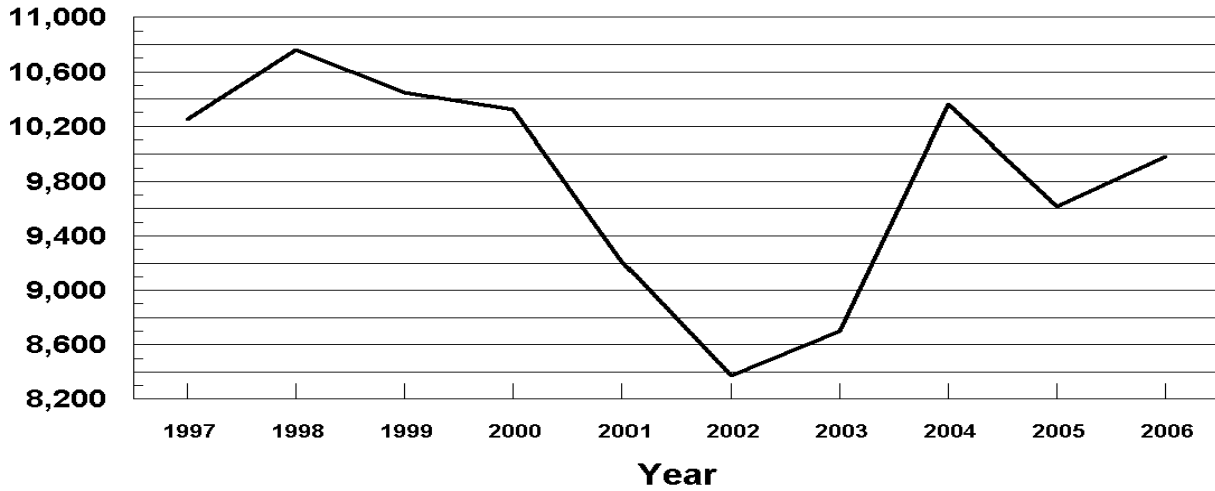
U.S. Apples Bearing Acres 1997-2006

(000) Acres



U.S. Apples Utilized Production 1997-2006

Million Pounds



**Miscellaneous Fruits: Bearing Acreage, Yield, Production, and Utilization
by State and United States, 2004-2006**

Crop, State, and Season	Bearing Acreage	Yield Per Acre ¹	Production		Utilization	
			Total	Utilized	Fresh	Processed
	<i>Acres</i>	<i>Tons</i>	<i>Tons</i>	<i>Tons</i>	<i>Tons</i>	<i>Tons</i>
Apricots ²						
CA						
2004	16,000	5.88	94,000	85,500	17,900	67,600
2005	14,500	5.21	75,500	70,500	18,500	52,000
2006	14,500	2.69	39,000	39,000	9,000	30,000
UT						
2004			330	290		
2005			250	245		
2006			280	255		
WA						
2004			6,800	6,800		
2005			5,900	5,900		
2006			5,400	5,400		
US						
2004	17,340	5.83	101,130	92,590	23,650	68,940
2005	15,840	5.15	81,650	76,645	23,645	53,000
2006	15,540	2.88	44,680	44,655	13,755	30,900
Avocados ³						
CA						
2004-05	62,000	2.44	151,000	151,000	151,000	
2005-06	62,000	4.84	300,000	300,000	300,000	
2006-07						
FL						
2004-05	6,400	4.38	28,000	28,000	28,000	
2005-06	5,300	2.26	12,000	12,000	12,000	
2006-07						
HI						
2004-05	270	1.37	370	370	370	
2005-06	300	1.33	400	400	400	
2006-07						
US						
2004-05	68,670	2.61	179,370	179,370	179,370	
2005-06	67,600	4.62	312,400	312,400	312,400	
2006-07						
Dates						
CA						
2004	5,500	3.13	17,200	17,200	17,200	
2005	5,800	3.07	17,800	17,800	17,800	
2006	5,400	3.15	17,000	17,000	17,000	

¹ Yield is based on total production.

² Missing data not published to avoid disclosure of individual operations.

³ Estimates for 2006-07 will be published on July 6, 2007.

**Miscellaneous Fruits: Price and Value by State
and United States, 2004-2006**¹

Crop, State, and Season	Price per Ton			Value of Production		
	Fresh	Processed	All	Fresh	Processed	Total
	<i>Dollars</i>	<i>Dollars</i>	<i>Dollars</i>	<i>1,000 Dollars</i>	<i>1,000 Dollars</i>	<i>1,000 Dollars</i>
Apricots ²						
CA						
2004	538.00	283.00	334.00	9,630	18,945	28,575
2005	1,090.00	271.00	481.00	20,165	13,765	33,930
2006	1,510.00	321.00	593.00	13,590	9,538	23,128
UT						
2004			610.00			177
2005			959.00			235
2006			1,000.00			255
WA						
2004			921.00			6,260
2005			969.00			5,715
2006			1,150.00			6,197
US						
2004	672.00	279.00	378.00	15,897	19,115	35,012
2005	1,100.00	266.00	520.00	26,035	13,845	39,880
2006	1,450.00	313.00	662.00	19,965	9,615	29,580
Avocados ³						
CA						
2004-05	1,830.00		1,830.00	276,330		276,330
2005-06	1,130.00		1,130.00	339,000		339,000
2006-07						
FL						
2004-05	516.00		516.00	14,448		14,448
2005-06	940.00		940.00	11,280		11,280
2006-07						
HI						
2004-05	1,260.00		1,260.00	466		466
2005-06	1,320.00		1,320.00	528		528
2006-07						
US						
2004-05	1,620.00		1,620.00	291,244		291,244
2005-06	1,120.00		1,120.00	350,808		350,808
2006-07						
Dates						
CA						
2004	1,310.00		1,310.00	22,532		22,532
2005	1,560.00		1,560.00	27,768		27,768
2006	1,640.00		1,640.00	27,880		27,880

¹ Missing data not published to avoid disclosure of individual operations.

² Apricot processed price excludes dried. Processing value includes dried.

³ Estimates for 2006-07 will be published on July 6, 2007.

**Miscellaneous Fruits: Bearing Acreage, Yield, Production, and Utilization
by State and United States, 2004-2006¹**

Crop, State, and Season	Bearing Acreage	Yield Per Acre ²	Production		Utilization	
			Total	Utilized	Fresh	Processed
	<i>Acres</i>	<i>Tons</i>	<i>Tons</i>	<i>Tons</i>	<i>Tons</i>	<i>Tons</i>
Figs ³						
CA						
2004	12,800	3.99	51,100	51,100	4,300	46,800
2005	12,800	3.84	49,200	49,200	6,900	42,300
2006	11,500	3.63	41,700	41,700	7,500	34,200
Kiwifruit						
CA						
2004	4,500	5.93	26,700	24,700	22,500	2,200
2005	4,500	8.27	37,200	36,200	34,200	2,000
2006	4,000	5.85	23,400	22,800	21,500	1,300
Nectarines ⁴						
CA						
2004	36,500	7.37	269,000	252,000	252,000	
2005	36,500	6.55	239,000	239,000	239,000	
2006	35,500	6.42	228,000	228,000	228,000	
WA ⁵						
2004						
2005	1,400	8.21	11,500	11,500	11,500	
2006	1,400	7.36	10,300	10,300	10,300	
US						
2004	36,500	7.37	269,000	252,000	252,000	
2005	37,900	6.61	250,500	250,500	250,500	
2006	36,900	6.46	238,300	238,300	238,300	
Olives						
CA						
2004	32,000	3.36	107,500	107,500	500	107,000
2005	32,000	4.44	142,000	142,000	500	141,500
2006	31,000	0.76	23,500	23,500	500	23,000
Plums						
CA ⁶						
2004	36,000	4.33	156,000	144,000		
2005	36,000	4.75	171,000	171,000		
2006	36,000	4.39	158,000	158,000		

¹ Missing data not published to avoid disclosure of individual operations.

² Yield is based on total production.

³ Small quantities of canned figs are included in fresh to avoid disclosure of individual operations.

⁴ Small quantities of processed nectarines are included in fresh to avoid disclosure of individual operations.

⁵ Washington estimates began in 2005.

⁶ Small quantities of processed plums are included in fresh to avoid disclosure of individual operations.

**Miscellaneous Fruits: Price and Value by State
and United States, 2004-2006**¹

Crop, State, and Season	Price per Ton			Value of Production		
	Fresh <i>Dollars</i>	Processed <i>Dollars</i>	All <i>Dollars</i>	Fresh <i>1,000 Dollars</i>	Processed <i>1,000 Dollars</i>	Total <i>1,000 Dollars</i>
Figs						
CA						
2004			396.00			20,214
2005			513.00			25,256
2006 ²						
Kiwifruit						
CA						
2004			809.00			19,977
2005			620.00			22,461
2006 ²						
Nectarines ³						
CA						
2004	342.00		342.00	86,184		86,184
2005	504.00		504.00	120,456		120,456
2006	517.00		517.00	117,876		117,876
WA ⁴						
2004						
2005	564.00		564.00	6,486		6,486
2006	614.00		614.00	6,324		6,324
US						
2004	342.00		342.00	86,184		86,184
2005	507.00		507.00	126,942		126,942
2006	521.00		521.00	124,200		124,200
Olives						
CA						
2004	500.00	564.00	564.00	250	60,393	60,643
2005	500.00	564.00	564.00	250	79,847	80,097
2006	500.00	779.00	773.00	250	17,924	18,174
Plums						
CA ⁵						
2004			516.00			74,347
2005			541.00			92,463
2006			698.00			110,217

¹ Missing data not published to avoid disclosure of individual operations.

² Estimates for 2006 will be published on July 6, 2007.

³ Small quantities of processed nectarines are included in fresh to avoid disclosure of individual operations.

⁴ Washington estimates began in 2005.

⁵ Small quantities of processed plums are included in fresh to avoid disclosure of individual operations.

**Miscellaneous Fruits: Bearing Acreage, Yield, Production, and Utilization
by State and United States, 2004-2006¹**

Crop, State, and Season	Bearing Acreage	Yield Per Acre ²	Production		Utilization	
			Total	Utilized	Fresh	Processed
	<i>Acres</i>	<i>Tons</i>	<i>Tons</i>	<i>Tons</i>	<i>Tons</i>	<i>Tons</i>
Prunes & Plums						
ID						
2004	510	7.84	4,000	3,920		
2005	480	4.17	2,000	1,950		
2006	450	4.44	2,000	1,900		
MI						
2004	750	3.33	2,500	2,000	350	1,650
2005	750	2.67	2,000	2,000	450	1,550
2006	700	5.14	3,600	3,400	1,800	1,600
OR						
2004	1,700	7.65	13,000	7,500	3,000	4,500
2005	1,500	1.00	1,500	1,500	1,200	300
2006	1,500	7.00	10,500	8,500	2,500	6,000
WA						
2004	800	6.88	5,500	5,500		
2005	800	4.50	3,600	3,600		
2006	750	6.93	5,200	5,200		
4-State Total						
2004	3,760	6.65	25,000	18,920	10,350	8,570
2005	3,530	2.58	9,100	9,050	5,500	3,550
2006	3,400	6.26	21,300	19,000	9,550	9,450
Prunes (Dried Basis)						
CA						
2004	70,000	0.70	49,000	48,000		48,000
2005	67,000	1.45	97,000	94,000		94,000
2006	67,000	2.54	170,000	161,600		161,600

¹ Missing data not published to avoid disclosure of individual operations.

² Yield is based on total production.

**Miscellaneous Fruits: Price and Value by State
and United States, 2004-2006**¹

Crop, State, and Season	Price per Ton			Value of Production		
	Fresh	Processed	All	Fresh	Processed	Total
	<i>Dollars</i>	<i>Dollars</i>	<i>Dollars</i>	<i>1,000 Dollars</i>	<i>1,000 Dollars</i>	<i>1,000 Dollars</i>
Prunes & Plums						
ID						
2004			613.00			2,401
2005			999.00			1,948
2006			887.00			1,686
MI						
2004	769.00	264.00	353.00	269	436	705
2005	760.00	245.00	361.00	342	380	722
2006	1,100.00	249.00	700.00	1,980	399	2,379
OR						
2004	537.00	228.00	352.00	1,611	1,026	2,637
2005	445.00	300.00	416.00	534	90	624
2006	496.00	274.00	339.00	1,240	1,645	2,885
WA						
2004			193.00			1,059
2005			498.00			1,791
2006			349.00			1,813
4-State Total						
2004	468.00	228.00	360.00	4,847	1,955	6,802
2005	759.00	257.00	562.00	4,172	913	5,085
2006	654.00	267.00	461.00	6,244	2,519	8,763
Prunes (Dried Basis)						
CA						
2004		1,500.00	1,500.00		72,000	72,000
2005		1,470.00	1,470.00		138,180	138,180
2006		1,490.00	1,490.00		240,784	240,784

¹ Missing data not published to avoid disclosure of individual operations.

**Miscellaneous Fruits: Processed Utilization, Use, and Price
by State and United States, 2004-2006¹**

Crop, Use, and State	Processed Utilization					
	Quantity			Price per Ton		
	2004	2005	2006	2004	2005	2006
	<i>Tons</i>	<i>Tons</i>	<i>Tons</i>	<i>Dollars</i>	<i>Dollars</i>	<i>Dollars</i>
Apricots						
Canned						
CA		23,500	14,900		285.00	359.00
Juice						
CA						
Frozen						
CA	9,700			308.00		
Dried (Fresh Basis)						
CA	11,800	11,500	5,500	269.00	244.00	303.00
Figs ²						
Dried (Fresh Basis)						
CA	46,800	42,300	34,200	299.00	287.00	
Olives						
Canned						
CA	74,400	100,000	17,000	701.00	667.00	929.00
Crushed for Oil						
CA	11,500	14,000	4,000	361.00	526.00	405.00
Limited						
CA	16,100	21,200	1,500	252.00	271.00	338.00
Undersized						
CA	5,000	6,300	500	6.00	6.00	7.00
Prunes & Plums						
Canned						
4-State Total	3,140	2,450	3,050	196.00	262.00	278.00
Frozen						
4-State Total	1,040	420	2,100	289.00	250.00	213.00
Dried & Other						
4-State Total	4,390	680	4,300	237.00	244.00	285.00

¹ Missing data not published to avoid disclosure of individual operations.

² Price estimates for 2006 will be published on July 6, 2007.

**Olives: Variety and Total Production, California
2004-2006**

Variety	Total Production		
	2004	2005	2006
	<i>Tons</i>	<i>Tons</i>	<i>Tons</i>
Manzanillo	80,000	116,000	16,000
Sevillano	24,000	20,000	5,500
All Other ¹	3,500	6,000	2,000
Total	107,500	142,000	23,500

¹ Includes production for varieties that were or will be used for canned, oil, and other specialty products.

California Dry Fruits: Production, Use, and Price, 2004-2006

Crop	Quantity			Price per Ton		
	2004	2005	2006	2004	2005	2006
	<i>Tons</i>	<i>Tons</i>	<i>Tons</i>	<i>Dollars</i>	<i>Dollars</i>	<i>Dollars</i>
Fresh Basis						
Apricots	11,800	11,500	5,500	269.00	244.00	303.00
Figs ¹	46,800	42,300	34,200	299.00	287.00	
Grapes						
Raisin	1,094,000	1,604,000	1,422,000	303.00	217.00	241.00
Table	13,000	41,000	22,000	289.00	239.00	246.00
Peaches						
Freestone	10,400	12,700	13,100	32.00	46.00	79.00
Pears						
Bartlett	4,000	2,700	1,500	160.00	240.00	234.00
Prunes	141,000	286,700	505,800	511.00	482.00	476.00
Dried Basis						
Apricots ²	1,630	1,360	640	1,950.00	2,060.00	2,600.00
Figs ^{1 3}						
Standard	13,700	12,300	9,700	1,010.00	977.00	
Sub-Std.	1,900	1,800	1,700	60.00	60.00	
Grapes						
Raisin ^{4 5}	274,000	348,600	309,200	1,210.00	1,000.00	1,110.00
Table ⁶	3,300	8,900	4,700	1,140.00	1,100.00	1,150.00
Peaches ⁷						
Freestone	870	1,160	1,290	382.00	504.00	802.00
Pears ⁸						
Bartlett	620	400	250	1,030.00	1,620.00	1,406.00
Prunes ⁹	48,000	94,000	161,600	1,500.00	1,470.00	1,490.00

¹ Price estimates for 2006 will be published on July 6, 2007.

² Dried basis 1 ton of apricots equivalent to 7.24 tons for 2004, 8.46 tons for 2005, and 8.59 tons for 2006.

³ Dried basis 1 ton of all figs equivalent to 3.00 tons for 2004, 2005, and 2006.

⁴ Includes substandard raisins diverted to other uses.

⁵ Dried basis 1 ton of raisins equivalent to 3.99 tons for 2004, 4.60 tons for 2005, and 4.60 tons for 2006.

⁶ Dried basis 1 ton of table type raisins equivalent to 3.94 tons for 2004, 4.61 tons for 2005, and 4.68 tons for 2006.

⁷ Dried basis 1 ton of Freestone peaches equivalent to 11.95 tons for 2004, 10.95 tons for 2005, and 10.16 tons for 2006.

⁸ Dried basis 1 ton of Bartlett pears equivalent to 6.45 tons for 2004, 6.75 tons for 2005, and 6.00 tons for 2006.

⁹ Dried basis 1 ton of dried prunes equivalent to 2.94 tons for 2004, 3.05 tons for 2005, and 3.13 tons for 2006.

**Strawberries for Fresh Market and Processing: Area Planted and Harvested,
Yield, Production, Price, and Value by State and United States, 2004-2006**

State	Area Planted			Area Harvested		
	2004	2005	2006	2004	2005	2006
	<i>Acres</i>	<i>Acres</i>	<i>Acres</i>	<i>Acres</i>	<i>Acres</i>	<i>Acres</i>
CA	33,200	34,300	35,800	33,200	34,300	35,800
FL	7,100	7,300	7,400	7,100	7,300	7,300
MI	1,100	1,100	1,000	900	1,000	850
NY	1,700	1,700	1,700	1,500	1,500	1,500
NC	1,700	1,600	1,700	1,600	1,500	1,600
OH	1,000	1,100	1,100	800	800	750
OR	3,300	3,100	3,100	2,400	2,200	2,100
PA	1,300	1,300	1,300	1,300	1,300	1,300
WA	1,700	1,500	1,400	1,700	1,500	1,400
WI	1,000	900	830	900	800	680
US	53,100	53,900	55,330	51,400	52,200	53,280
	Yield per Acre			Production		
	2004	2005	2006	2004	2005	2006
	<i>Cwt</i>	<i>Cwt</i>	<i>Cwt</i>	<i>1,000 Cwt</i>	<i>1,000 Cwt</i>	<i>1,000 Cwt</i>
CA	590	600	590	19,588	20,580	21,163
FL	230	245	280	1,633	1,789	2,044
MI	46	52	65	41	52	55
NY	43	35	29	65	52	44
NC	110	130	135	176	195	216
OH	48	53	57	38	42	43
OR	135	115	110	324	250	230
PA	61	54	57	79	70	74
WA	90	100	91	153	150	128
WI	46	51	63	41	41	43
US	431	445	451	22,138	23,221	24,040
	Value					
	Per Cwt			Total		
	2004	2005	2006	2004	2005	2006
	<i>Dollars</i>	<i>Dollars</i>	<i>Dollars</i>	<i>1,000 Dollars</i>	<i>1,000 Dollars</i>	<i>1,000 Dollars</i>
CA	53.10	54.60	56.40	1,040,900	1,122,834	1,194,379
FL	109.00	110.00	117.00	177,997	196,790	239,148
MI	97.70	93.80	114.00	4,005	4,878	6,285
NY	160.00	155.00	170.00	10,400	8,060	7,480
NC	90.00	95.00	90.00	15,840	18,525	19,440
OH	134.00	137.00	152.00	5,092	5,754	6,536
OR	48.90	54.70	69.10	15,839	13,680	15,882
PA	164.00	183.00	167.00	12,956	12,810	12,358
WA	47.80	46.30	60.40	7,310	6,940	7,728
WI	125.00	133.00	134.00	5,125	5,453	5,762
US	58.50	60.10	63.00	1,295,464	1,395,724	1,514,998

**Strawberries for Fresh Market and Processing: Production, Price, and Value
by Utilization, State, and United States, 2004-2006**

Utilization and State	Production					
	2004		2005		2006	
	<i>1,000 Cwt</i>		<i>1,000 Cwt</i>		<i>1,000 Cwt</i>	
Fresh Market						
CA		14,830		15,825		16,542
FL		1,633		1,789		2,044
MI		36		47		52
NY		65		52		44
NC		176		195		216
OH		38		42		43
OR		29		24		36
PA		79		70		74
WA		17		20		17
WI		41		41		43
US		16,944		18,105		19,111
Processing						
CA		4,758		4,755		4,621
MI		5		5		3
OR		295		226		194
WA		136		130		111
US		5,194		5,116		4,929
	Value					
	Per Unit			Total		
	2004	2005	2006	2004	2005	2006
	<i>Dollars Per Cwt</i>	<i>Dollars Per Cwt</i>	<i>Dollars Per Cwt</i>	<i>1,000 Dollars</i>	<i>1,000 Dollars</i>	<i>1,000 Dollars</i>
Fresh Market						
CA	62.20	62.60	64.80	922,426	990,645	1,071,922
FL	109.00	110.00	117.00	177,997	196,790	239,148
MI	105.00	99.00	118.00	3,780	4,653	6,136
NY	160.00	155.00	170.00	10,400	8,060	7,480
NC	90.00	95.00	90.00	15,840	18,525	19,440
OH	134.00	137.00	152.00	5,092	5,754	6,536
OR	124.00	118.00	134.00	3,596	2,832	4,824
PA	164.00	183.00	167.00	12,956	12,810	12,358
WA	110.00	113.00	91.50	1,870	2,260	1,556
WI	125.00	133.00	134.00	5,125	5,453	5,762
US	68.40	68.90	72.00	1,159,082	1,247,782	1,375,162
Processing						
CA	24.90	27.80	26.50	118,474	132,189	122,457
MI	45.00	45.00	49.50	225	225	149
OR	41.50	48.00	57.00	12,243	10,848	11,058
WA	40.00	36.00	55.60	5,440	4,680	6,172
US	26.30	28.90	28.40	136,382	147,942	139,836

**Berries: Harvested Acreage, Yield, Production, and Utilization
by Crop, State, and United States, 2004-2006**

Crop, State, and Year	Area Harvested	Yield Per Acre ¹	Production		Utilization	
			Total	Utilized	Fresh	Processed
	<i>Acres</i>	<i>Pounds</i>	<i>1,000 Pounds</i>	<i>1,000 Pounds</i>	<i>1,000 Pounds</i>	<i>1,000 Pounds</i>
Cultivated						
Blueberries						
AL ²						
2004	300	1,900	980	570	570	
2005	280	1,860	750	520	520	
2006	270	1,190	440	320	320	
AR ²						
2004	530	3,400	1,900	1,800	1,800	
2005	530	2,550	1,500	1,350	1,350	
2006	530	3,020	1,650	1,600	1,600	
CA ³						
2004						
2005 ²	2,000	4,550	9,100	9,100	9,100	
2006 ²	2,300	4,350	10,000	10,000	10,000	
FL ²						
2004	2,300	2,430	6,000	5,600	5,600	
2005	2,500	2,080	5,200	5,200	5,200	
2006	2,600	2,690	7,040	7,000	7,000	
GA						
2004	4,800	4,380	21,000	21,000	10,000	11,000
2005	6,000	4,330	26,000	26,000	12,000	14,000
2006	7,000	4,500	31,500	31,500	16,000	15,500
IN						
2004	600	5,000	3,100	3,000	1,500	1,500
2005	600	5,830	3,500	3,500	2,000	1,500
2006	620	5,480	3,400	3,400	1,900	1,500
MI						
2004	17,400	4,600	80,000	80,000	36,000	44,000
2005	16,800	3,930	66,000	66,000	25,000	41,000
2006	16,700	4,970	83,000	83,000	29,000	54,000
MS ⁴						
2004						
2005						
2006	2,000	2,300	4,600	4,600	2,600	2,000
NJ						
2004	7,500	5,200	39,000	39,000	33,000	6,000
2005	7,500	6,000	45,000	45,000	33,000	12,000
2006	7,600	6,840	52,000	52,000	40,000	12,000
NY						
2004	700	2,430	2,000	1,700	1,400	300
2005	700	2,000	1,500	1,400	1,350	50
2006	700	2,860	2,200	2,000	1,950	50
NC						
2004	4,400	5,200	22,900	22,900	16,400	6,500
2005	5,000	5,200	26,000	26,000	16,100	9,900
2006	4,700	5,430	25,500	25,500	17,900	7,600
OR						
2004	3,500	9,710	34,000	34,000	13,400	20,600
2005	4,000	8,630	34,500	34,500	13,800	20,700
2006	4,400	8,090	35,600	35,600	13,900	21,700
WA						
2004	2,400	7,500	18,000	18,000	5,000	13,000
2005	2,800	7,000	19,600	19,600	3,900	15,700
2006	3,400	5,590	19,000	19,000	4,500	14,500
US						
2004	44,430	5,120	228,880	227,570	124,550	103,020
2005	48,710	4,890	238,650	238,170	123,100	115,070
2006	52,820	5,220	275,930	275,520	146,130	129,390
Wild						
Blueberries						
ME						
2004			46,000	46,000	300	45,700
2005			60,150	60,150	350	59,800
2006			74,600	74,600	400	74,200

¹ Yield is based on utilized production.

² Small quantities of processed blueberries are included in fresh to avoid disclosure of individual operations.

³ Estimates began in 2005.

⁴ Estimates began in 2006.

**Berries: Price and Value by Crop, State,
and United States, 2004-2006**

Crop, State and Year	Price per Pound			Value of Production		
	Fresh	Processed	All	Fresh	Processed	Total
	<i>Dollars</i>	<i>Dollars</i>	<i>Dollars</i>	<i>1,000 Dollars</i>	<i>1,000 Dollars</i>	<i>1,000 Dollars</i>
Cultivated						
Blueberries						
AL ¹						
2004	1.230		1.230	699		699
2005	0.906		0.906	471		471
2006	1.380		1.380	442		442
AR ¹						
2004	1.230		1.230	2,216		2,216
2005	1.740		1.740	2,349		2,349
2006	1.550		1.550	2,486		2,486
CA ²						
2004						
2005 ¹	4.460		4.460	40,583		40,583
2006 ¹	3.280		3.280	32,800		32,800
FL ¹						
2004	4.500		4.500	25,200		25,200
2005	6.300		6.300	32,760		32,760
2006	4.700		4.700	32,900		32,900
GA						
2004	1.640	0.670	1.130	16,400	7,370	23,770
2005	1.730	0.790	1.220	20,760	11,060	31,820
2006	2.370	1.410	1.900	37,920	21,855	59,775
IN						
2004	1.330	0.850	1.090	1,995	1,275	3,270
2005	1.410	0.970	1.220	2,820	1,455	4,275
2006	1.600	1.320	1.480	3,040	1,980	5,020
MI						
2004	1.600	0.900	1.220	57,600	39,610	97,210
2005	1.700	1.000	1.270	42,500	41,000	83,500
2006	2.150	1.430	1.680	62,350	77,397	139,747
MS ³						
2004						
2005						
2006	1.400	1.200	1.310	3,640	2,400	6,040
NJ						
2004	1.210	0.950	1.170	39,930	5,700	45,630
2005	1.310	1.020	1.230	43,230	12,240	55,470
2006	1.640	1.510	1.610	65,600	18,120	83,720
NY						
2004	1.450	0.950	1.360	2,030	285	2,315
2005	1.420	0.920	1.400	1,917	46	1,963
2006	1.410	0.920	1.400	2,750	46	2,796
NC						
2004	1.700	0.670	1.410	27,880	4,355	32,235
2005	1.800	0.780	1.410	28,980	7,722	36,702
2006	2.150	1.350	1.910	38,485	10,260	48,745
OR						
2004	0.970	0.700	0.806	12,998	14,420	27,418
2005	1.210	0.800	0.964	16,698	16,560	33,258
2006	1.790	1.300	1.490	24,881	28,210	53,091
WA						
2004	1.250	0.750	0.889	6,250	9,750	16,000
2005	1.330	0.890	0.978	5,187	13,973	19,160
2006	2.380	1.340	1.590	10,710	19,430	30,140
US						
2004	1.550	0.805	1.210	193,058	82,905	275,963
2005	1.930	0.910	1.440	237,595	104,716	342,311
2006	2.170	1.400	1.810	316,690	181,012	497,702
Wild						
Blueberries						
ME						
2004	1.350	0.450	0.456	405	20,565	20,970
2005	1.600	0.650	0.656	560	38,870	39,430
2006	1.650	0.800	0.805	660	59,360	60,020

¹ Small quantities of processed blueberries are included in fresh to avoid disclosure of individual operations.

² Estimates began in 2005.

³ Estimates began in 2006.

**Berries: Harvested Acreage, Yield, Production, and Utilization
by Crop, State, and United States, 2004-2006**

Crop, State, and Year	Area Harvested	Yield Per Acre ¹	Production		Utilization	
			Total	Utilized	Fresh	Processed
	<i>Acres</i>	<i>Pounds</i>	<i>1,000 Pounds</i>	<i>1,000 Pounds</i>	<i>1,000 Pounds</i>	<i>1,000 Pounds</i>
Boysenberries						
CA ²						
2004	300	10,000	3,000	3,000		
2005	310	9,030	2,800	2,800		
2006	320	11,300	3,630	3,630		
OR						
2004	750	4,270	3,200	3,200	200	3,000
2005	600	3,830	2,330	2,300	200	2,100
2006	600	3,830	2,400	2,300	100	2,200
US ²						
2004	1,050	5,900	6,200	6,200		
2005	910	5,600	5,130	5,100		
2006	920	6,450	6,030	5,930		
Loganberries						
OR						
2004	60	2,830	180	170	20	150
2005	60	3,670	290	220	20	200
2006	60	2,000	125	120	10	110
Black Raspberries						
OR						
2004	1,100	2,160	2,380	2,380	10	2,370
2005	1,300	3,260	4,240	4,240	20	4,220
2006	1,500	2,670	4,010	4,010	10	4,000
Red Raspberries						
OR						
2004	1,900	3,530	6,700	6,700	1,100	5,600
2005	1,900	3,790	7,200	7,200	1,300	5,900
2006	1,900	3,240	6,200	6,150	950	5,200
WA						
2004	9,000	6,600	59,400	59,400	1,500	57,900
2005	9,500	7,400	70,300	70,300	1,400	68,900
2006	9,600	6,000	57,600	57,600	850	56,750
US						
2004	10,900	6,060	66,100	66,100	2,600	63,500
2005	11,400	6,800	77,500	77,500	2,700	74,800
2006	11,500	5,540	63,800	63,750	1,800	61,950
All Raspberries						
CA ²						
2004	4,100	22,000	90,000	90,000		
2005	4,200	24,000	100,800	100,800		
2006	4,300	27,000	116,100	116,100		

¹ Yield is based on utilized production.

² No breakdown of utilization available.

**Berries: Price and Value by Crop, State,
and United States, 2004-2006**

Crop, State, and Year	Price per Pound			Value of Production		
	Fresh	Processed	All	Fresh	Processed	Total
	<i>Dollars</i>	<i>Dollars</i>	<i>Dollars</i>	<i>1,000 Dollars</i>	<i>1,000 Dollars</i>	<i>1,000 Dollars</i>
Boysenberries						
CA ¹						
2004			1.200			3,600
2005			1.330			3,724
2006			1.070			3,868
OR						
2004	1.490	1.090	1.120	298	3,270	3,568
2005	1.630	1.480	1.490	326	3,108	3,434
2006	1.580	1.410	1.420	158	3,102	3,260
US ¹						
2004			1.160			7,168
2005			1.400			7,158
2006			1.200			7,128
Loganberries						
OR						
2004	1.140	0.720	0.771	23	108	131
2005	1.420	0.800	0.855	28	160	188
2006	1.320	0.791	0.833	13	87	100
Black Raspberries						
OR						
2004	2.430	2.250	2.250	24	5,333	5,357
2005	1.870	2.460	2.460	37	10,381	10,418
2006	1.980	2.440	2.440	20	9,760	9,780
Red Raspberries						
OR						
2004	1.370	0.760	0.860	1,507	4,256	5,763
2005	1.550	0.660	0.821	2,015	3,894	5,909
2006	1.730	0.610	0.783	1,644	3,172	4,816
WA						
2004	1.690	0.750	0.774	2,535	43,425	45,960
2005	1.970	0.530	0.559	2,758	36,517	39,275
2006	2.120	0.330	0.356	1,802	18,728	20,530
US						
2004	1.550	0.751	0.782	4,042	47,681	51,723
2005	1.770	0.540	0.583	4,773	40,411	45,184
2006	1.910	0.354	0.398	3,446	21,900	25,346
All Raspberries						
CA ¹						
2004			2.090			188,100
2005			1.990			200,592
2006			2.150			249,615

¹ No breakdown of utilization available.

Oregon Blackberries: Harvested Acreage, Yield, Production, and Utilization by Variety, 2004-2006

Variety and Year	Area Harvested	Yield Per Acre ¹	Production		Utilization	
			Total	Utilized	Fresh	Processed
	<i>Acres</i>	<i>Pounds</i>	<i>1,000 Pounds</i>	<i>1,000 Pounds</i>	<i>1,000 Pounds</i>	<i>1,000 Pounds</i>
Cultivated Blackberries (OR)						
Marion						
2004	4,300	6,580	28,300	28,300	300	28,000
2005	4,300	6,140	26,800	26,400	400	26,000
2006	4,500	5,090	22,900	22,900	900	22,000
Evergreen						
2004	900	6,440	5,800	5,800	300	5,500
2005	900	6,330	5,700	5,700	300	5,400
2006	800	5,000	4,000	4,000	200	3,800
Other						
2004	1,100	12,500	13,800	13,800	1,000	12,800
2005	1,300	12,500	16,400	16,300	1,500	14,800
2006	1,600	9,000	14,600	14,400	1,600	12,800
All						
2004	6,300	7,600	47,900	47,900	1,600	46,300
2005	6,500	7,450	48,900	48,400	2,200	46,200
2006	6,900	5,990	41,500	41,300	2,700	38,600

¹ Yield is based on utilized production.

Oregon Blackberries: Price and Value by Variety, 2004-2006

Variety and Year	Price per Pound			Value of Production		
	Fresh	Processed	All	Fresh	Processed	Total
	<i>Dollars</i>	<i>Dollars</i>	<i>Dollars</i>	<i>1,000 Dollars</i>	<i>1,000 Dollars</i>	<i>1,000 Dollars</i>
Cultivated Blackberries (OR)						
Marion						
2004	1.220	0.740	0.745	366	20,720	21,086
2005	1.360	0.710	0.720	544	18,460	19,004
2006	1.740	0.800	0.837	1,566	17,600	19,166
Evergreen						
2004	1.020	0.590	0.612	306	3,245	3,551
2005	1.260	0.680	0.711	378	3,672	4,050
2006	1.800	0.690	0.746	360	2,622	2,982
Other						
2004	1.100	0.650	0.683	1,100	8,320	9,420
2005	1.710	0.760	0.847	2,565	11,248	13,813
2006	1.310	0.870	0.919	2,096	11,136	13,232
All						
2004	1.110	0.697	0.711	1,772	32,285	34,057
2005	1.590	0.723	0.762	3,487	33,380	36,867
2006	1.490	0.812	0.857	4,022	31,358	35,380

**Sweet Cherries: Bearing Acreage, Yield, Production, and Utilization
by State and United States, 2004-2006¹**

State and Year	Bearing Acreage	Yield Per Acre ²	Production		Utilization	
			Total	Utilized	Fresh	Processed
	<i>Acres</i>	<i>Tons</i>	<i>Tons</i>	<i>Tons</i>	<i>Tons</i>	<i>Tons</i>
CA						
2004	26,000	2.81	73,000	70,300	57,700	12,600
2005	27,000	1.95	52,700	48,600	35,600	13,000
2006	28,000	1.50	42,100	40,200	32,400	7,800
ID						
2004			3,100	3,100		
2005	850	2.00	1,700	1,700		
2006	1,000	3.80	3,800	3,530		
MI						
2004	8,100	3.05	24,700	24,700	500	24,200
2005	8,200	3.29	27,000	27,000	600	26,400
2006	8,200	2.62	21,500	21,500	2,500	19,000
MT						
2004			2,360	2,220		
2005	740	1.66	1,230	1,180		
2006	750	3.20	2,400	580		
NY						
2004	700	1.29	900	890		
2005	700	1.14	800	740		
2006	700	1.37	960	860		
OR						
2004	12,000	3.58	43,000	42,000	22,000	20,000
2005	12,000	2.38	28,600	25,600	14,000	11,600
2006	12,000	4.17	50,000	47,500	29,500	18,000
PA ³						
2004			400	350	350	
2005						
2006						
UT						
2004	650	2.46	1,600	1,600	850	750
2005	650	2.77	1,800	1,750	980	770
2006	650	2.77	1,800	1,750	910	840
WA						
2004	29,000	4.62	134,000	134,000	99,000	35,000
2005	29,000	4.72	137,000	137,000	113,000	24,000
2006	30,000	5.70	171,000	171,000	136,000	35,000
US						
2004	78,275	3.62	283,060	279,160	185,050	94,110
2005	79,140	3.17	250,830	243,570	167,190	76,380
2006	81,300	3.61	293,560	286,920	205,170	81,750

¹ Missing data not published to avoid disclosure of individual operations.

² Yield is based on total production.

³ Estimates discontinued in 2005.

**Sweet Cherries: Price and Value by State
and United States, 2004-2006¹**

State and Year	Price per Ton			Value of Production		
	Fresh	Processed	All	Fresh	Processed	All
	<i>Dollars</i>	<i>Dollars</i>	<i>Dollars</i>	<i>1,000 Dollars</i>	<i>1,000 Dollars</i>	<i>1,000 Dollars</i>
CA						
2004	2,020.00	524.00	1,750.00	116,554	6,602	123,156
2005	2,210.00	467.00	1,740.00	78,676	6,075	84,751
2006	3,740.00	412.00	3,090.00	121,176	3,215	124,391
ID						
2004			1,390.00			4,323
2005			1,950.00			3,313
2006			1,110.00			3,922
MI						
2004	2,020.00	632.00	660.00	1,010	15,301	16,311
2005	1,770.00	594.00	620.00	1,062	15,670	16,732
2006	2,500.00	671.00	883.00	6,250	12,742	18,992
MT						
2004			2,010.00			4,473
2005			3,530.00			4,165
2006			1,850.00			1,071
NY						
2004			1,400.00			1,245
2005			1,710.00			1,267
2006			2,290.00			1,973
OR						
2004	1,470.00	802.00	1,150.00	32,340	16,040	48,380
2005	1,930.00	876.00	1,450.00	27,020	10,166	37,186
2006	1,047.00	719.00	923.00	30,887	12,936	43,823
PA ²						
2004	2,980.00		2,980.00	1,043		1,043
2005						
2006						
UT						
2004	1,450.00	480.00	996.00	1,233	360	1,593
2005	2,000.00	600.00	1,380.00	1,960	462	2,422
2006	2,320.00	700.00	1,540.00	2,111	588	2,699
WA						
2004	2,220.00	481.00	1,770.00	219,780	16,829	236,609
2005	2,830.00	613.00	2,440.00	319,790	14,722	334,512
2006	2,000.00	532.00	1,700.00	272,000	18,611	290,611
US						
2004	2,060.00	597.00	1,570.00	380,972	56,161	437,133
2005	2,610.00	620.00	1,990.00	436,992	47,356	484,348
2006	2,140.00	597.00	1,700.00	438,693	48,789	487,482

¹ Missing data not published to avoid disclosure of individual operations.

² Estimates discontinued in 2005.

**Tart Cherries: Bearing Acreage, Yield, Production, and Utilization
by State and United States, 2004-2006**¹

State and Year	Bearing Acreage	Yield Per Acre ²	Production		Utilization	
			Total	Utilized	Fresh	Processed
	<i>Acres</i>	<i>Pounds</i>	<i>Million Pounds</i>	<i>Million Pounds</i>	<i>Million Pounds</i>	<i>Million Pounds</i>
CO ³						
2004			0.2	0.2		
2005						
2006						
MI						
2004	27,000	5,520	149.0	149.0	0.5	148.5
2005	27,300	7,620	208.0	208.0	0.5	207.5
2006	27,700	6,860	190.0	180.3	0.5	179.8
NY						
2004	2,000	5,350	10.7	10.7		
2005	2,000	3,750	7.5	7.5		
2006	2,000	5,200	10.4	10.4		
OR						
2004	800	4,880	3.9	3.9		
2005	750	400	0.3	0.3		
2006	750	4,530	3.4	3.4		
PA						
2004	800	3,750	3.0	3.0		
2005	800	3,250	2.6	2.6		
2006	700	7,430	5.2	5.2		
UT						
2004	2,800	7,860	22.0	22.0		22.0
2005	2,800	10,000	28.0	26.0		26.0
2006	2,800	10,000	28.0	25.0		25.0
WA						
2004			17.5	17.5		
2005	1,600	10,300	16.5	16.5		
2006	1,550	14,400	22.3	21.7		
WI						
2004	1,900	3,530	6.7	6.7	0.1	6.6
2005	1,800	4,170	7.5	7.5	0.1	7.4
2006	1,700	2,650	4.5	4.4		4.4
US						
2004	36,950	5,760	213.0	213.0	1.3	211.7
2005	37,050	7,300	270.4	268.4	1.2	267.2
2006	37,200	7,090	263.8	250.4	1.4	249.0

¹ Missing data not published to avoid disclosure of individual operations.

² Yield is based on total production.

³ Estimates discontinued in 2005.

**Tart Cherries: Price and Value by State
and United States, 2004-2006¹**

State and Year	Price per Pound			Value of Production		
	Fresh	Processed	All	Fresh	Processed	All
	<i>Dollars</i>	<i>Dollars</i>	<i>Dollars</i>	<i>1,000 Dollars</i>	<i>1,000 Dollars</i>	<i>1,000 Dollars</i>
CO ²						
2004			0.210			42
2005						
2006						
MI						
2004	0.800	0.333	0.335	400	49,461	49,861
2005	0.500	0.228	0.229	250	47,305	47,555
2006 ³			0.188			33,909
NY						
2004			0.409			4,381
2005			0.432			3,243
2006			0.311			3,236
OR						
2004			0.369			1,439
2005			0.380			114
2006			0.276			938
PA						
2004			0.353			1,060
2005			0.315			819
2006			0.337			1,750
UT						
2004		0.238	0.238		5,236	5,236
2005		0.233	0.233		6,058	6,058
2006		0.265	0.265		6,625	6,625
WA						
2004			0.309			5,409
2005			0.239			3,951
2006			0.259			5,630
WI						
2004	0.710	0.370	0.375	71	2,442	2,513
2005	0.500	0.290	0.293	50	2,146	2,196
2006		0.310	0.310		1,365	1,365
US						
2004	0.915	0.325	0.328	1,190	68,751	69,941
2005	0.893	0.235	0.238	1,071	62,865	63,936
2006	0.990	0.209	0.213	1,392	52,061	53,453

¹ Missing data not published to avoid disclosure of individual operations.

² Estimates discontinued in 2005.

³ Estimates of price and value by utilization for 2006 will be published on July 6, 2007.

**Sweet and Tart Cherries: Processed Utilization, Use,
and Price by State and United States, 2004-2006**

Crop, Use, and State	Processed Utilization					
	Quantity			Price per Unit		
	2004	2005	2006	2004	2005	2006
	<i>Tons</i>	<i>Tons</i>	<i>Tons</i>	<i>Dollars per Ton</i>	<i>Dollars per Ton</i>	<i>Dollars per Ton</i>
Sweet Cherries						
Canned						
MI	2,870	4,350	670	640.00	630.00	800.00
OR	2,000	1,300	3,000	1,100.00	1,060.00	900.00
WA	4,500	4,000	5,500	798.00	810.00	1,130.00
US	9,370	9,650	9,170	814.00	763.00	1,030.00
Brined						
MI	18,100	17,800	12,200	617.00	550.00	550.00
OR	14,000	8,000	11,000	740.00	880.00	732.00
WA	18,000	13,000	9,500	541.00	719.00	669.00
Oth Sts	10,630	7,530	6,030	686.00	779.00	637.00
US	60,730	46,330	38,730	635.00	692.00	644.00
Other ¹						
MI	3,230	4,250	6,130	711.00	739.00	897.00
OR	4,000	2,300	4,000	870.00	760.00	546.00
WA	12,500	7,000	20,000	280.00	305.00	302.00
Oth Sts	4,280	6,850	3,720	159.00	137.00	178.00
US	24,010	20,400	33,850	415.00	390.00	425.00
	<i>Million Pounds</i>	<i>Million Pounds</i>	<i>Million Pounds</i>	<i>Dollars per Pound</i>	<i>Dollars per Pound</i>	<i>Dollars per Pound</i>
Tart Cherries						
Canned						
MI ²	39.5	51.0	39.0	0.340	0.240	
Oth Sts ²	7.1	6.9	10.8	0.351	0.315	
US	46.6	57.9	49.8	0.342	0.249	0.184
Frozen						
MI ²	103.0	146.0	114.0	0.340	0.230	
Oth Sts ²	47.1	41.9	43.8	0.312	0.255	
US	150.1	187.9	157.8	0.331	0.236	0.227
Other ³						
MI ²	6.0	10.5	26.8	0.169	0.141	
Oth Sts ²	9.0	10.9	14.6	0.232	0.250	
US	15.0	21.4	41.4	0.207	0.196	0.173

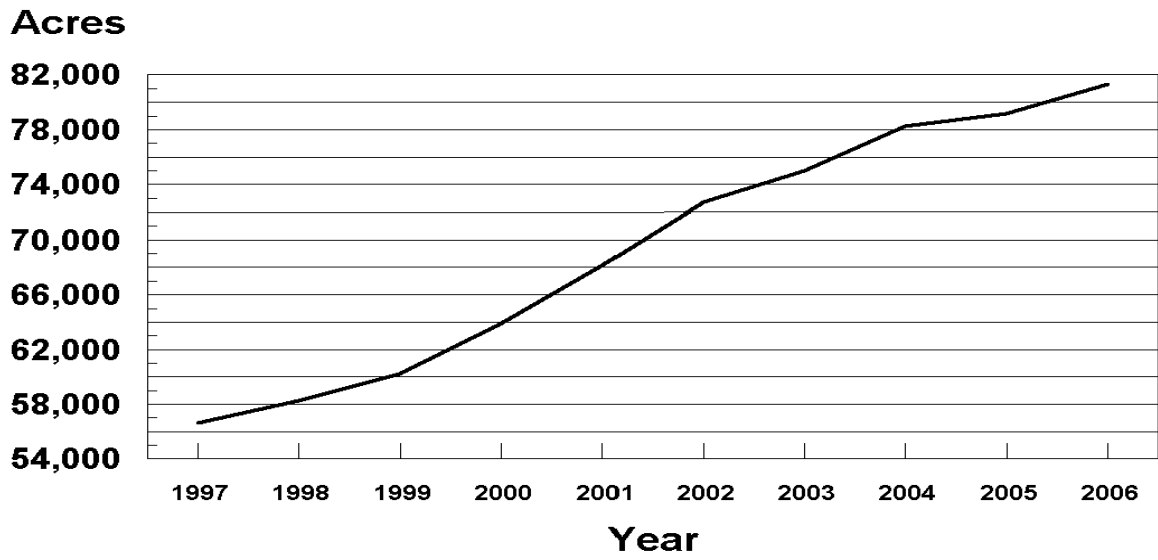
¹ Includes California canned utilization and other processed utilizations (frozen, juice, etc.) from all States.

² Price estimates for 2006 will be published on July 6, 2007.

³ Juice, wine, brined, and dried.

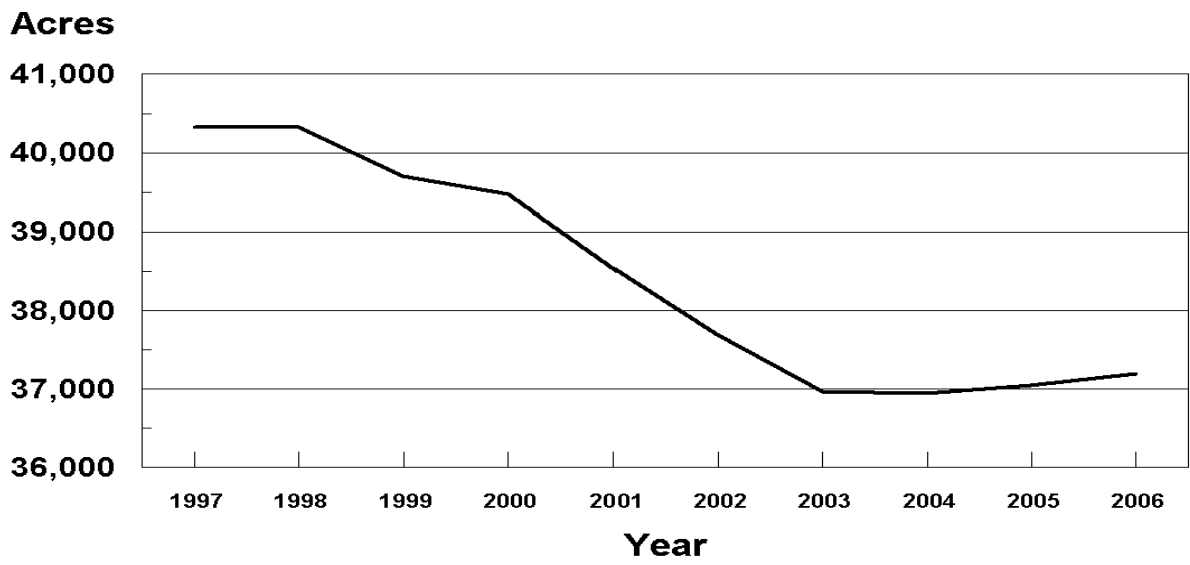
U.S. Sweet Cherries

Bearing Acres 1997-2006



U.S. Tart Cherries

Bearing Acres 1997-2006



**Cranberries: Area Harvested, Yield, Production and Utilization
by State and United States, 2004-2006**

Year and State	Area Harvested	Yield per Acre ¹	Production		Utilization	
			Total	Utilized	Fresh	Processed
	<i>Acres</i>	<i>Barrels ²</i>	<i>Barrels ²</i>	<i>Barrels ²</i>	<i>Barrels ²</i>	<i>Barrels ²</i>
2004						
MA	14,100	128.2	1,808,000	1,808,000	152,000	1,656,000
NJ ³	3,100	129.7	402,000	394,000		394,000
OR	2,900	170.7	495,000	495,000	10,000	485,000
WA	1,700	100.0	170,000	170,000	30,000	140,000
WI	17,400	189.7	3,300,000	3,300,000	205,000	3,095,000
US	39,200	157.5	6,175,000	6,167,000	397,000	5,770,000
2005						
MA	14,100	100.9	1,423,000	1,423,000	124,000	1,299,000
NJ ³	3,100	171.9	533,000	533,000		533,000
OR	2,700	163.0	440,000	440,000	5,000	435,000
WA	1,700	110.0	187,000	187,000	18,000	169,000
WI	17,400	210.3	3,660,000	3,660,000	200,000	3,460,000
US	39,000	160.1	6,243,000	6,243,000	347,000	5,896,000
2006						
MA	14,000	140.9	1,973,000	1,973,000	158,000	1,815,000
NJ ³	3,100	156.5	485,000	480,000		480,000
OR ³	2,600	167.3	435,000	435,000		435,000
WA	1,700	67.1	114,000	114,000	30,500	83,500
WI	17,500	220.0	3,850,000	3,750,000	150,000	3,600,000
US	38,900	176.3	6,857,000	6,752,000	338,500	6,413,500

¹ Yield is based on total production.

² A barrel weighs 100 pounds.

³ Small quantities of fresh cranberries are included in processed to avoid disclosure of individual operations.

**Cranberries: Utilization, Price, and Value
by State and United States, 2004-2006**

Year and State	Price per Barrel ^{1 2}			Value of Utilized Production		
	Fresh	Processed	All	Fresh	Processed	All
	<i>Dollars</i>	<i>Dollars</i>	<i>Dollars</i>	<i>1,000 Dollars</i>	<i>1,000 Dollars</i>	<i>1,000 Dollars</i>
2004						
MA	54.80	30.60	32.60	8,330	50,674	59,004
NJ ³		31.20	31.20		12,293	12,293
OR	55.30	32.60	33.10	553	15,811	16,364
WA	55.30	31.40	35.60	1,659	4,396	6,055
WI	54.40	31.60	33.00	11,152	97,802	108,954
US	54.60	31.40	32.90	21,694	180,976	202,670
2005						
MA	55.90	32.90	34.90	6,932	42,737	49,669
NJ ³		34.00	34.00		18,122	18,122
OR	48.70	34.40	34.60	244	14,964	15,208
WA	56.30	34.40	36.50	1,013	5,814	6,827
WI	56.30	33.00	34.30	11,260	114,180	125,440
US	56.00	33.20	34.50	19,449	195,817	215,266
2006						
MA	57.20	35.00	36.80	9,038	63,525	72,563
NJ ³		35.50	35.50		17,040	17,040
OR ³		48.30	48.30		21,011	21,011
WA	57.60	36.00	41.80	1,757	3,006	4,763
WI	57.60	35.40	36.30	8,640	127,440	136,080
US	57.40	36.20	37.20	19,435	232,022	251,457

¹ Weighted average of co-op and independent sales. Co-op prices represent pool proceeds less returns for processing non-cranberry products, capital stock dividends, capital stock retains, and other retains.

² A barrel weighs 100 pounds.

³ Small quantities of fresh cranberries are included in processed to avoid disclosure of individual operations.

**Grapes: Bearing Acreage and Yield by Type,
State, and United States, 2004-2006**

State and Type	Bearing Acreage			Yield per Acre ¹		
	2004	2005	2006	2004	2005	2006
	<i>Acres</i>	<i>Acres</i>	<i>Acres</i>	<i>Tons</i>	<i>Tons</i>	<i>Tons</i>
AZ	1,000	400	400	4.00	2.50	2.25
AR	900	750	700	3.33	2.53	3.29
CA						
All Types	800,000	800,000	800,000	7.03	8.70	7.12
Wine	473,000	477,000	477,000	5.95	7.98	6.37
Table	83,000	83,000	83,000	9.28	10.50	8.43
Raisin	244,000	240,000	240,000	8.35	9.52	8.15
GA	1,100	1,100	1,100	3.00	3.18	2.64
MI	13,900	14,200	14,200	4.50	7.23	2.29
MO	1,100	1,200	1,300	3.30	3.25	3.21
NY	31,000	31,000	31,000	4.58	5.74	5.00
NC	1,100	1,300	1,300	3.18	3.00	3.52
OH	2,100	2,200	2,200	2.29	3.86	1.41
OR	11,100	11,800	12,200	2.16	2.29	2.79
PA	12,000	12,000	12,100	7.23	7.50	6.78
TX	2,900	2,900	2,900	3.03	3.34	2.45
VA	1,900	2,000	2,300	1.95	2.80	2.91
WA						
All Types	53,000	54,000	55,500	5.04	7.69	5.69
Wine	27,000	28,000	29,500	3.96	3.93	4.07
Juice	26,000	26,000	26,000	6.15	11.70	7.54
US	933,100	934,850	937,200	6.69	8.36	6.77

¹ Yield is based on total production.

**Grapes: Total and Utilized Production, Price, and Value
by Type, State, and United States, 2004-2006**

State and Type	Total Production			Utilized Production		
	2004	2005	2006	2004	2005	2006
	<i>Tons</i>	<i>Tons</i>	<i>Tons</i>	<i>Tons</i>	<i>Tons</i>	<i>Tons</i>
AZ	4,000	1,000	900	4,000	1,000	900
AR	3,000	1,900	2,300	2,700	1,900	2,200
CA						
All Types	5,623,000	6,963,000	5,695,000	5,623,000	6,963,000	5,695,000
Wine	2,815,000	3,806,000	3,040,000	2,815,000	3,806,000	3,040,000
Table ¹	770,000	872,000	700,000	770,000	872,000	700,000
Raisin ¹	2,038,000	2,285,000	1,955,000	2,038,000	2,285,000	1,955,000
GA	3,300	3,500	2,900	3,200	3,500	2,900
MI	62,500	102,700	32,500	58,000	102,700	27,500
MO	3,630	3,900	4,170	3,630	3,900	4,170
NY	142,000	178,000	155,000	142,000	178,000	153,000
NC	3,500	3,900	4,580	3,500	3,900	4,480
OH	4,800	8,500	3,100	4,800	8,500	3,100
OR	24,000	27,000	34,000	19,400	25,000	34,000
PA	86,800	90,000	82,000	86,800	90,000	82,000
TX	8,800	9,700	7,100	8,500	8,500	3,200
VA	3,700	5,600	6,700	3,400	5,600	6,500
WA						
All Types	267,000	415,000	316,000	267,000	415,000	316,000
Wine	107,000	110,000	120,000	107,000	110,000	120,000
Juice	160,000	305,000	196,000	160,000	305,000	196,000
US	6,240,030	7,813,700	6,346,250	6,229,930	7,810,500	6,334,950
	Price per Ton			Value of Utilized Production		
	2004	2005	2006	2004	2005	2006
	<i>Dollars</i>	<i>Dollars</i>	<i>Dollars</i>	<i>1,000 Dollars</i>	<i>1,000 Dollars</i>	<i>1,000 Dollars</i>
AZ	334.00	538.00	832.00	1,335	538	749
AR	502.00	539.00	621.00	1,355	1,024	1,366
CA						
All Types	492.00	459.00	502.00	2,764,534	3,197,820	2,861,224
Wine	570.00	582.00	559.00	1,604,925	2,215,248	1,700,000
Table ¹	695.00	442.00	911.00	535,009	385,116	637,450
Raisin ¹	306.00	261.00	268.00	624,600	597,456	523,774
GA	1,160.00	1,390.00	1,270.00	3,724	4,850	3,690
MI	236.00	210.00	351.00	13,690	21,518	9,658
MO	720.00	774.00	698.00	2,612	3,017	2,912
NY	226.00	193.00	242.00	32,124	34,290	36,972
NC	962.00	937.00	1,030.00	3,366	3,653	4,624
OH	411.00	311.00	621.00	1,974	2,643	1,926
OR	1,660.00	1,680.00	1,790.00	32,204	42,000	60,860
PA	213.00	212.00	251.00	18,460	19,096	20,607
TX	919.00	1,250.00	1,200.00	7,812	10,625	3,855
VA	1,300.00	1,360.00	1,440.00	4,420	7,616	9,360
WA						
All Types	458.00	338.00	456.00	122,335	140,425	144,204
Wine	925.00	930.00	942.00	98,975	102,300	113,040
Juice ²	146.00	125.00		23,360	38,125	
US	483.00	447.00	499.00	3,009,945	3,489,115	3,162,007

¹ Fresh equivalent of dried and not dried.

² Official estimates of price and value for 2006 are not published.

**Grapes: Fresh and Processed Utilization, and Price
by Type, State, and United States, 2004-2006**

Utilization, State, and Type	Fresh and Processed Utilization					
	Quantity			Price per Ton		
	2004	2005	2006	2004	2005	2006
	<i>Tons</i>	<i>Tons</i>	<i>Tons</i>	<i>Dollars</i>	<i>Dollars</i>	<i>Dollars</i>
Fresh						
CA						
All Types ¹	876,000	988,000	776,000	764.00	567.00	988.00
Wine	40,000	50,000	40,000	510.00	510.00	500.00
Table	644,000	725,000	599,000	790.00	500.00	1,040.00
Raisin ¹	192,000	213,000	137,000	730.00	808.00	902.00
MI	500	700	100	800.00	800.00	1,600.00
MO	80	60	70	710.00	740.00	600.00
NY	2,000	3,000	3,000	678.00	680.00	720.00
NC	200	200	180	1,650.00	1,800.00	1,800.00
OH	100	100	100	1,040.00	820.00	760.00
PA	500	500	300	650.00	670.00	700.00
TX ²			100			1,350.00
Oth Sts	3,200	3,050	1,720	1,080.00	1,350.00	1,300.00
US ¹	882,580	995,610	781,570	765.00	570.00	988.00
Processed						
CA						
All Types	4,747,000	5,975,000	4,919,000	441.00	441.00	426.00
Wine	2,775,000	3,756,000	3,000,000	571.00	583.00	560.00
Table	126,000	147,000	101,000	208.00	154.00	143.00
Raisin	1,846,000	2,072,000	1,818,000	262.00	205.00	220.00
MI	57,500	102,000	27,400	231.00	205.00	347.00
MO	3,550	3,840	4,100	720.00	774.00	700.00
NY	140,000	175,000	150,000	220.00	184.00	232.00
NC	3,300	3,700	4,300	920.00	890.00	1,000.00
OH	4,700	8,400	3,000	398.00	305.00	617.00
OR ³	19,400	25,000	34,000	1,660.00	1,680.00	1,790.00
PA	86,300	89,500	81,700	210.00	210.00	250.00
TX ⁴	8,500	8,500	3,100	919.00	1,250.00	1,200.00
VA	3,400	5,600	6,500	1,300.00	1,360.00	1,440.00
WA						
All Types	267,000	415,000	316,000	458.00	338.00	456.00
Wine	107,000	110,000	120,000	925.00	930.00	942.00
Juice ⁵	160,000	305,000	196,000	146.00	125.00	
Oth Sts	6,700	3,350	4,280	441.00	685.00	835.00
US	5,347,350	6,814,890	5,553,380	437.00	429.00	430.00

¹ Grapes canned are included in fresh in 2005 to avoid disclosure of individual operations.

² Quantities sold fresh are included in processed in 2004 and 2005.

³ Includes small quantities sold fresh.

⁴ Includes small quantities sold fresh in 2004 and 2005.

⁵ Official estimate of price for 2006 is not published.

**Grapes: Fresh and Processed Value by Type,
State, and United States, 2004-2006**

Utilization, State, and Type	Fresh and Processed Utilization		
	Value of Utilized Production		
	2004	2005	2006
	<i>1,000 Dollars</i>	<i>1,000 Dollars</i>	<i>1,000 Dollars</i>
Fresh			
CA			
All Types ¹	669,320	560,104	766,534
Wine	20,400	25,500	20,000
Table	508,760	362,500	622,960
Raisin ¹	140,160	172,104	123,574
MI	400	560	160
MO	57	44	42
NY	1,356	2,040	2,160
NC	330	360	324
OH	104	82	76
PA	325	335	210
TX ²			135
Oth Sts	3,456	4,118	2,233
US ¹	675,348	567,643	771,874
Processed			
CA			
All Types	2,095,214	2,637,716	2,094,690
Wine	1,584,525	2,189,748	1,680,000
Table	26,249	22,616	14,490
Raisin	484,440	425,352	400,200
MI	13,290	20,958	9,498
MO	2,555	2,973	2,870
NY	30,768	32,250	34,812
NC	3,036	3,293	4,300
OH	1,870	2,561	1,850
OR ³	32,204	42,000	60,860
PA	18,135	18,761	20,397
TX ⁴	7,812	10,625	3,720
VA	4,420	7,616	9,360
WA			
All Types	122,335	140,425	144,204
Wine	98,975	102,300	113,040
Juice ⁵	23,360	38,125	
Oth Sts	2,958	2,294	3,572
US	2,334,597	2,921,472	2,390,133

¹ Grapes canned are included in fresh in 2005 to avoid disclosure of individual operations.

² Quantities sold fresh are included in processed in 2004 and 2005.

³ Includes small quantities sold fresh.

⁴ Includes small quantities sold fresh in 2004 and 2005.

⁵ Official estimate of value for 2006 is not published.

**Grapes: Processed Utilization, Use, and Price
by Type, State, and United States, 2004-2006**

Use and State	Processed Utilization					
	Quantity			Price per Ton		
	2004	2005	2006	2004	2005	2006
	<i>Tons</i>	<i>Tons</i>	<i>Tons</i>	<i>Dollars</i>	<i>Dollars</i>	<i>Dollars</i>
Canned ¹						
CA						
Raisin	25,000		21,000	300.00		303.00
Juice ^{2 3 4}						
MI	54,300	97,400	23,100	192.00	167.00	
NY	103,000	135,000	102,000	187.00	174.00	
OH	3,200	7,000	1,600	190.00	174.00	
PA	73,000	73,200	65,500	175.00	165.00	
WA	160,000	305,000	196,000	146.00	125.00	
Oth Sts ⁵	3,720	310		290.00	500.00	
US	397,220	617,910	388,200	170.00	148.00	
Wine						
CA						
All Types	3,615,000	4,330,000	3,454,000	485.00	526.00	504.00
Wine	2,775,000	3,756,000	3,000,000	571.00	583.00	560.00
Table	113,000	106,000	79,000	199.00	121.00	115.00
Raisin	727,000	468,000	375,000	200.00	164.00	135.00
MI	3,200	4,600	4,300	895.00	1,020.00	1,000.00
MO	3,530	3,830	4,100	720.00	775.00	700.00
NY	37,000	40,000	48,000	311.00	219.00	211.00
NC	3,300	3,700	4,300	920.00	890.00	1,000.00
OH	1,500	1,400	1,400	841.00	959.00	1,000.00
OR ³	19,400	25,000	34,000	1,660.00	1,680.00	1,790.00
PA	13,300	16,300	16,200	403.00	410.00	410.00
TX ⁶	8,500	8,500	3,100	919.00	1,250.00	1,200.00
VA	3,400	5,600	6,500	1,300.00	1,360.00	1,440.00
WA	107,000	110,000	120,000	925.00	930.00	942.00
Oth Sts ³	3,000	3,050	4,280	631.00	703.00	835.00
US	3,818,130	4,551,980	3,700,180	504.00	543.00	530.00
Dried (Fr Basis)						
CA						
All Types	1,107,000	1,645,000	1,444,000	303.00	218.00	241.00
Table	13,000	41,000	22,000	289.00	239.00	246.00
Raisin	1,094,000	1,604,000	1,422,000	303.00	217.00	241.00

¹ Grapes canned are included with fresh in 2005 to avoid disclosure of individual operations.

² Includes small quantities of other processed (jam, jelly, etc.).

³ Includes small quantities for other uses.

⁴ Official estimates of prices for 2006 are not published.

⁵ Grapes processed for juice in 2006 are included in Other States wine to avoid disclosure of individual operations.

⁶ Includes small quantities for other uses in 2004 and 2005.

**Concord Grapes: Processed Utilization by State
and United States, 2004-2006**

State	Processed Utilization		
	2004	2005	2006
	<i>Tons</i>	<i>Tons</i>	<i>Tons</i>
MI	34,900	66,500	15,350
NY	99,300	137,000	108,600
OH	3,000	6,800	1,600
PA	78,000	78,000	71,400
WA	140,000	275,000	175,000
Oth Sts	920	460	920
US	356,120	563,760	372,870

**Concord Grapes for Processing: Marketing Year Average Prices,
New York and Pennsylvania, 2004-2006 ¹**

State	2004	2005	2006
	<i>Dollars per Ton</i>	<i>Dollars per Ton</i>	<i>Dollars per Ton</i>
NY	189	170	
PA	184	170	

¹ Official estimates of price for 2006 are not published.

**Niagara Grapes: Processed Utilization by State
and United States, 2004-2006**

State	Processed Utilization		
	2004	2005	2006
	<i>Tons</i>	<i>Tons</i>	<i>Tons</i>
MI	19,400	31,000	8,100
NY	19,800	18,000	18,500
OH	450	550	200
PA	3,600	6,000	5,000
WA	20,000	30,000	21,000
US	63,250	85,550	52,800

**Peaches: Bearing Acreage and Yield by Type,
State, and United States, 2004-2006**

State	Bearing Acreage			Yield per Acre ¹		
	2004	2005	2006	2004	2005	2006
	<i>Acres</i>	<i>Acres</i>	<i>Acres</i>	<i>Tons</i>	<i>Tons</i>	<i>Tons</i>
AL	3,000	2,800	2,700	4.67	4.29	3.33
AR	1,400	1,500	1,400	3.21	3.30	3.00
CA						
Freestone	37,000	36,000	36,000	11.80	10.70	9.81
CO	2,000	2,100	2,300	6.50	5.71	6.09
CT	400	400	400	2.13	1.75	2.25
GA	12,000	11,500	11,500	4.38	3.48	3.57
ID	920	1,000	1,150	9.78	8.00	7.83
IL	1,600	1,600	1,600	6.63	7.00	7.11
IN ²	650			1.85		
KY	270	280	270	2.96	2.68	4.07
LA	280	270	260	3.04	2.41	2.12
MD	1,100	1,000	900	3.73	4.20	4.06
MA	380	380	380	2.53	2.63	3.68
MI	5,200	5,000	4,500	3.60	2.80	4.20
MO	1,600	1,500	1,500	2.81	3.87	4.26
NJ	7,600	7,400	7,200	4.28	4.73	4.72
NY	1,700	1,700	1,700	3.53	2.50	4.12
NC	1,200	1,200	1,200	2.92	5.00	4.69
OH	1,300	1,300	1,400	3.92	1.62	2.31
OK	840	900	900	2.38	2.22	2.00
OR	700	600	600	4.71	4.67	3.50
PA	4,500	4,500	4,300	5.11	5.91	5.02
SC	14,500	14,000	14,000	4.83	5.36	4.29
TN	500	500	500	3.90	4.00	3.80
TX	7,000	6,000	5,800	1.74	1.46	0.27
UT	1,300	1,300	1,300	3.85	3.62	4.31
VA	1,000	850	800	4.50	5.53	5.00
WA	2,800	2,700	2,650	7.68	7.74	8.68
WV	970	950	950	6.19	5.79	5.47
Total Above	113,710	109,230	108,160	6.75	6.41	6.02
CA						
Clingstone	32,000	30,400	26,300	16.80	15.90	13.70
US	145,710	139,630	134,460	8.97	8.48	7.51

¹ Yield is based on total production.

² Estimates discontinued in 2005.

**Peaches: Bearing Acreage and Yield by Type,
California, 2004-2006**

Type	Bearing Acreage			Yield per Acre ¹		
	2004	2005	2006	2004	2005	2006
	<i>Acres</i>	<i>Acres</i>	<i>Acres</i>	<i>Tons</i>	<i>Tons</i>	<i>Tons</i>
Freestone	37,000	36,000	36,000	11.80	10.70	9.81
Clingstone	32,000	30,400	26,300	16.80	15.90	13.70
Total	69,000	66,400	62,300	14.10	13.10	11.40

¹ Yield is based on total production.

**Peaches: Total and Utilized Production, by Type,
State, and United States, 2004-2006**

State	Total Production			Utilized Production		
	2004	2005	2006	2004	2005	2006
	<i>Tons</i>	<i>Tons</i>	<i>Tons</i>	<i>Tons</i>	<i>Tons</i>	<i>Tons</i>
AL	14,000	12,000	9,000	10,000	10,000	5,000
AR	4,500	4,950	4,200	3,700	4,650	3,850
CA						
Freestone	436,000	385,000	353,000	390,000	385,000	353,000
CO	13,000	12,000	14,000	12,000	11,000	13,000
CT	850	700	900	850	700	900
GA	52,500	40,000	41,000	49,500	37,000	37,000
ID	9,000	8,000	9,000	8,500	8,000	9,000
IL	10,600	11,200	11,370	9,500	11,000	10,740
IN ¹	1,200			1,200		
KY	800	750	1,100	750	650	1,000
LA	850	650	550	800	650	550
MD	4,100	4,200	3,650	4,100	4,200	3,630
MA	960	1,000	1,400	950	990	1,400
MI	18,700	14,000	18,900	18,700	14,000	18,700
MO	4,500	5,800	6,390	4,500	5,800	6,390
NJ	32,500	35,000	34,000	30,500	33,700	34,000
NY	6,000	4,250	7,000	5,900	4,100	6,730
NC	3,500	6,000	5,630	3,500	6,000	5,290
OH	5,100	2,100	3,240	5,000	2,100	3,000
OK	2,000	2,000	1,800	2,000	1,860	1,700
OR	3,300	2,800	2,100	3,200	2,700	2,000
PA	23,000	26,600	21,600	22,700	26,600	21,300
SC	70,000	75,000	60,000	55,000	45,000	50,000
TN	1,950	2,000	1,900	1,800	1,800	1,800
TX	12,200	8,750	1,590	9,900	8,350	750
UT	5,000	4,700	5,600	4,550	4,420	5,400
VA	4,500	4,700	4,000	4,400	4,630	3,950
WA	21,500	20,900	23,000	21,500	20,900	23,000
WV	6,000	5,500	5,200	5,800	5,300	5,000
Total Above	768,110	700,550	651,120	690,800	661,100	628,080
CA						
Clingstone	539,000	484,000	359,000	539,000	484,000	359,000
US	1,307,110	1,184,550	1,010,120	1,229,800	1,145,100	987,080

¹ Estimates discontinued in 2005.

**Peaches: Total and Utilized Production, by Type,
California, 2004-2006**

Type	Total Production			Utilized Production		
	2004	2005	2006	2004	2005	2006
	<i>Tons</i>	<i>Tons</i>	<i>Tons</i>	<i>Tons</i>	<i>Tons</i>	<i>Tons</i>
Freestone	436,000	385,000	353,000	390,000	385,000	353,000
Clingstone	539,000	484,000	359,000	539,000	484,000	359,000
Total	975,000	869,000	712,000	929,000	869,000	712,000

**Peaches: Price and Value by Type, State,
and United States, 2004-2006**

State	Price per Ton			Value of Utilized Production		
	2004	2005	2006	2004	2005	2006
	<i>Dollars</i>	<i>Dollars</i>	<i>Dollars</i>	<i>1,000 Dollars</i>	<i>1,000 Dollars</i>	<i>1,000 Dollars</i>
AL	661.00	808.00	1,030.00	6,610	8,080	5,142
AR	842.00	1,100.00	1,030.00	3,117	5,130	3,970
CA						
Freestone	281.00	408.00	469.00	109,760	157,048	165,562
CO	944.00	1,080.00	1,310.00	11,328	11,880	17,030
CT	1,600.00	1,600.00	1,800.00	1,360	1,120	1,620
GA	667.00	743.00	892.00	33,017	27,476	33,020
ID	752.00	967.00	655.00	6,388	7,735	5,899
IL	770.00	1,250.00	1,200.00	7,315	13,780	12,896
IN ¹	1,380.00			1,656		
KY	1,290.00	1,000.00	1,260.00	968	650	1,260
LA	1,420.00	1,730.00	1,730.00	1,136	1,125	952
MD	558.00	919.00	1,030.00	2,289	3,860	3,739
MA	1,500.00	1,500.00	1,940.00	1,425	1,485	2,716
MI	549.00	570.00	699.00	10,274	7,982	13,066
MO	780.00	980.00	880.00	3,510	5,684	5,623
NJ	760.00	916.00	1,050.00	23,180	30,869	35,700
NY	717.00	690.00	667.00	4,232	2,828	4,489
NC	840.00	850.00	967.00	2,940	5,100	5,115
OH	1,000.00	1,220.00	1,220.00	5,000	2,562	3,660
OK	1,030.00	1,010.00	1,100.00	2,060	1,879	1,870
OR	867.00	966.00	1,180.00	2,774	2,608	2,350
PA	710.00	715.00	917.00	16,114	19,011	19,529
SC	557.00	703.00	749.00	30,623	31,641	37,474
TN	1,070.00	1,280.00	1,410.00	1,926	2,304	2,538
TX	1,520.00	1,680.00	1,640.00	15,097	14,047	1,230
UT	627.00	775.00	672.00	2,853	3,424	3,627
VA	660.00	800.00	790.00	2,904	3,704	3,121
WA	349.00	561.00	544.00	7,502	11,732	12,504
WV	478.00	724.00	578.00	2,772	3,837	2,890
Total Above	463.00	588.00	651.00	320,130	388,581	408,592
CA						
Clingstone	263.00	254.00	292.00	141,494	122,939	104,846
US	375.00	447.00	520.00	461,624	511,520	513,438

¹ Estimates discontinued in 2005.

**Peaches: Price and Value by Type,
California, 2004-2006**

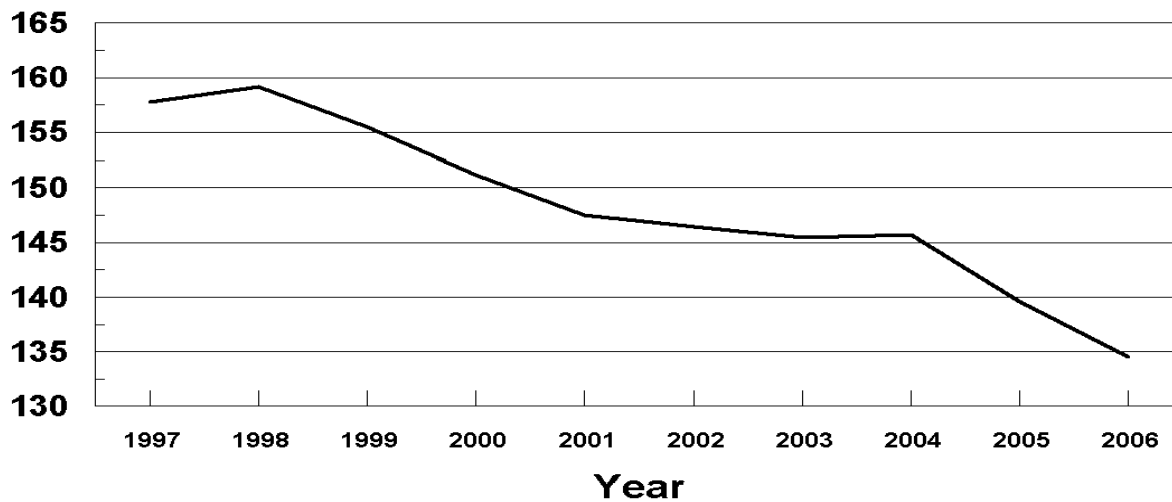
Type	Price per Ton			Value of Utilized Production		
	2004	2005	2006	2004	2005	2006
	<i>Dollars</i>	<i>Dollars</i>	<i>Dollars</i>	<i>1,000 Dollars</i>	<i>1,000 Dollars</i>	<i>1,000 Dollars</i>
Freestone	281.00	408.00	469.00	109,760	157,048	165,562
Clingstone	263.00	254.00	292.00	141,494	122,939	104,846
Total	270.00	322.00	380.00	251,254	279,987	270,408

U.S. Peaches

Bearing Acres

1997-2006

(000) Acres

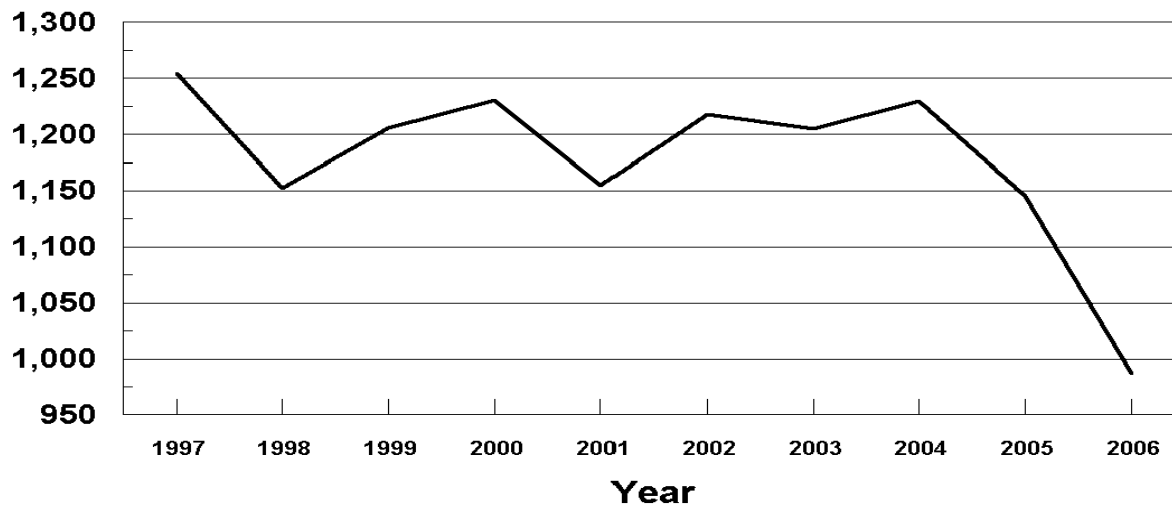


U.S. Peaches

Utilized Production

1997-2006

Tons



**Peaches: Fresh and Processed Utilization, and Price
by Type, State, and United States, 2004-2006**

Use and State	Fresh and Processed Utilization					
	Quantity			Price per Unit		
	2004	2005	2006	2004	2005	2006
	<i>Tons</i>	<i>Tons</i>	<i>Tons</i>	<i>Dollars per Ton</i>	<i>Dollars per Ton</i>	<i>Dollars per Ton</i>
Fresh						
AL	10,000	10,000	4,900	661.00	808.00	977.00
CA						
Freestone	259,000	252,000	242,000	341.00	540.00	597.00
CT	850	700	900	1,600.00	1,600.00	1,800.00
IL	9,500	10,800	10,700	770.00	1,250.00	1,200.00
IN ¹	1,200			1,380.00		
KY	750	650	1,000	1,290.00	1,000.00	1,260.00
LA	800	650	550	1,420.00	1,730.00	1,730.00
MD	4,050	4,000	3,630	563.00	950.00	1,030.00
MA	950	990	1,400	1,500.00	1,500.00	1,940.00
MI	12,500	7,000	11,350	660.00	780.00	860.00
MO	4,500	5,800	6,390	780.00	980.00	880.00
NY	3,600	1,950	3,050	920.00	900.00	784.00
OH	5,000	2,100	3,000	1,000.00	1,220.00	1,220.00
OK	2,000	1,860	1,700	1,030.00	1,010.00	1,100.00
SC	52,500	42,000	39,000	573.00	733.00	866.00
TN	1,800	1,800	1,800	1,070.00	1,280.00	1,410.00
TX	9,800	8,230	750	1,540.00	1,690.00	1,640.00
VA	4,400	4,630	3,950	660.00	800.00	790.00
WV	5,800	5,300	5,000	478.00	724.00	578.00
Oth Sts	146,600	141,590	140,380	733.00	867.00	970.00
US	535,600	502,050	481,450	548.00	718.00	780.00
	<i>Tons</i>	<i>Tons</i>	<i>Tons</i>	<i>Dollars per Ton</i>	<i>Dollars per Ton</i>	<i>Dollars per Ton</i>
Processed						
CA						
Clingstone	539,000	484,000	359,000	263.00	254.00	292.00
Freestone ²	131,000	133,000	111,000	164.00	158.00	190.00
MI	6,200	7,000	7,350	326.00	360.00	450.00
NY	2,300	2,150	3,680	400.00	499.00	570.00
SC	2,500	3,000	11,000	216.00	285.00	336.00
Oth Sts	13,200	13,900	13,600	133.00	189.00	220.00
US ³	694,200	643,050	505,630	242.00	235.00	273.00

¹ Estimates discontinued in 2005.

² CA Freestone quantity and value include dried, price excludes dried.

³ US quantity, price, and value include dried.

**Peaches: Fresh and Processed Value by State
and United States, 2004-2006**

Use and State	Fresh and Processed Utilization		
	Value of Utilized Production		
	2004	2005	2006
	<i>1,000 Dollars</i>	<i>1,000 Dollars</i>	<i>1,000 Dollars</i>
Fresh			
AL	6,610	8,080	4,787
CA			
Freestone	88,319	136,080	144,474
CT	1,360	1,120	1,620
IL	7,315	13,500	12,840
IN ¹	1,656		
KY	968	650	1,260
LA	1,136	1,125	952
MD	2,280	3,800	3,739
MA	1,425	1,485	2,716
MI	8,250	5,460	9,761
MO	3,510	5,684	5,623
NY	3,312	1,755	2,391
OH	5,000	2,562	3,660
OK	2,060	1,879	1,870
SC	30,083	30,786	33,774
TN	1,926	2,304	2,538
TX	15,092	13,909	1,230
VA	2,904	3,704	3,121
WV	2,772	3,837	2,890
Oth Sts	107,466	122,817	136,157
US	293,444	360,537	375,403
Processed			
CA			
Clingstone	141,494	122,939	104,846
Freestone ²	21,441	20,968	21,088
MI	2,024	2,522	3,305
NY	920	1,073	2,098
SC	540	855	3,700
Oth Sts	1,761	2,626	2,998
US ³	168,180	150,983	138,035

¹ Estimates discontinued in 2005.

² CA Freestone quantity and value include dried, price excludes dried.

³ US quantity, price, and value include dried.

**Peaches: Processed Utilization, and Price by Use,
State, and United States, 2004-2006**

Use and State	Processed Utilization					
	Quantity			Price per Ton		
	2004	2005	2006	2004	2005	2006
	<i>Tons</i>	<i>Tons</i>	<i>Tons</i>	<i>Dollars</i>	<i>Dollars</i>	<i>Dollars</i>
Canned						
CA						
Clingstone	505,000	459,000	344,000	270.00	256.00	295.00
NY						
Freestone	1,750	1,900		420.00	512.00	
Oth Sts	17,190	18,760	30,090	234.00	276.00	368.00
US	523,940	479,660	374,090	269.00	258.00	301.00
Frozen						
CA						
Freestone	86,600	82,800	84,100	211.00	202.00	209.00
NY						
Freestone	550	250		336.00	400.00	
Oth Sts	18,600	18,200	12,130	306.00	334.00	403.00
US	105,750	101,250	96,230	228.00	226.00	222.00
Dried						
CA						
Freestone	10,400	12,700	13,100	32.00	46.00	79.00
US	10,400	12,700	13,100	32.00	46.00	79.00
Other ¹						
Oth Sts	54,110	49,440	22,210	49.00	78.00	90.00
US	54,110	49,440	22,210	49.00	78.00	90.00

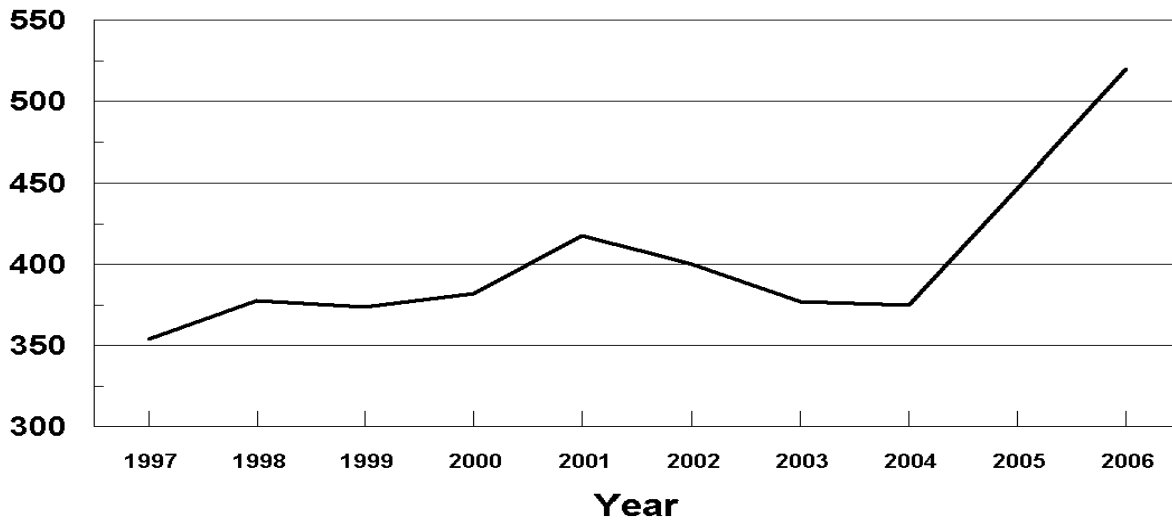
¹ Pickled, wine, brandy, juice, and baby food.

U.S. Peaches

Prices Received

1997-2006

Dollars Per Ton

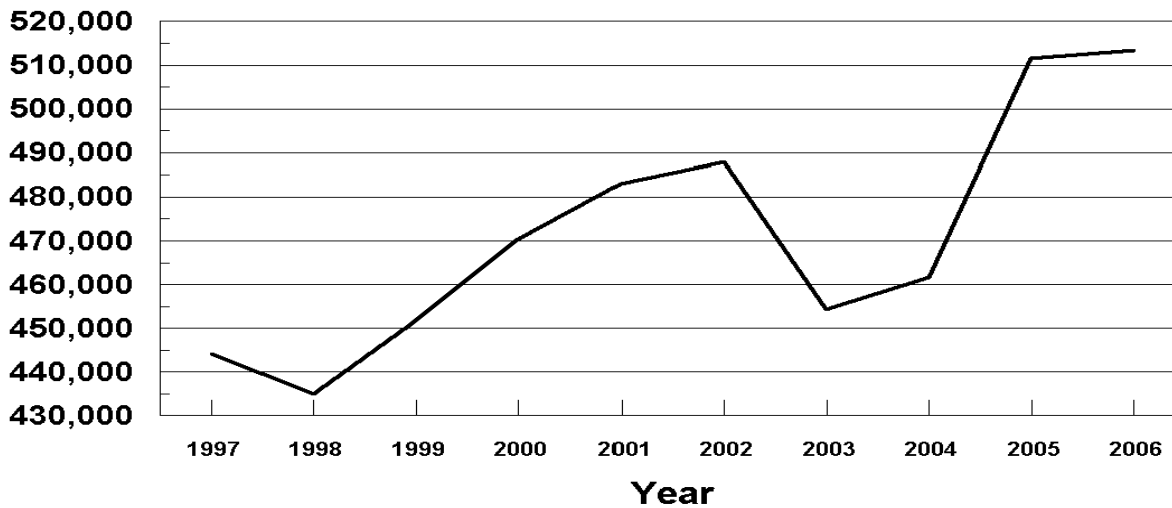


U.S. Peaches

Value of Utilized Production

1997-2006

(000) Dollars



**All Pears: Bearing Acreage, Yield, Production, and Utilization
by State and United States, 2004-2006¹**

State and Year	Bearing Acreage	Yield Per Acre ²	Production		Utilization	
			Total	Utilized	Fresh	Processed
	<i>Acres</i>	<i>Tons</i>	<i>Tons</i>	<i>Tons</i>	<i>Tons</i>	<i>Tons</i>
CA						
2004	17,000	15.90	271,000	271,000		
2005	16,000	12.60	202,000	202,000		
2006	16,000	14.90	239,000	229,000		
CO						
2004			2,600	2,500		
2005			2,500	2,200		
2006			2,300	2,000		
CT						
2004			900	900		
2005			1,000	1,000		
2006			1,000	1,000		
MI						
2004	800	4.33	3,460	3,400		
2005	800	2.50	2,000	1,970		
2006	800	4.50	3,600	3,500		
NY						
2004	1,400	11.80	16,500	13,900		
2005	1,400	6.07	8,500	8,200		
2006	1,400	11.40	16,000	15,600		
OR						
2004	16,900	12.60	213,000	211,000		
2005	16,200	11.90	192,000	191,000		
2006	16,200	12.80	208,000	208,000		
PA						
2004	900	5.00	4,500	4,400		
2005	800	2.63	2,100	2,100		
2006	800	4.88	3,900	3,800		
UT						
2004	130	2.31	300	300		
2005	130	1.69	220	200		
2006	130	1.81	235	220		
WA						
2004	25,500	14.40	366,000	366,000		
2005	24,700	16.70	413,000	413,000		
2006	24,000	15.30	367,000	367,000		
US ³						
2004	63,150	13.90	878,260	873,400	514,270	359,130
2005	60,550	13.60	823,320	821,670	504,400	317,270
2006	59,850	14.10	841,035	830,120	510,720	319,400

¹ Missing data not published to avoid disclosure of individual operations.

² Yield is based on total production.

³ Processed mostly canned, but includes small quantities dried and other uses not published separately to avoid disclosure of individual operations.

**All Pears: Price and Value by State
and United States, 2004-2006 ¹**

State and Year	Price per Ton			Value of Production		
	Fresh	Processed Exc. Dried	All	Fresh	Processed Inc. Dried	All
	<i>Dollars</i>	<i>Dollars</i>	<i>Dollars</i>	<i>1,000 Dollars</i>	<i>1,000 Dollars</i>	<i>1,000 Dollars</i>
CA						
2004			297.00			80,432
2005			395.00			79,790
2006			298.00			68,269
CO						
2004			561.00			1,403
2005			455.00			1,002
2006			543.00			1,085
CT						
2004			800.00			720
2005			952.00			952
2006			1,100.00			1,100
MI						
2004			311.00			1,058
2005			423.00			834
2006			320.00			1,120
NY						
2004			386.00			5,370
2005			499.00			4,088
2006			429.00			6,685
OR						
2004			348.00			73,381
2005			334.00			63,808
2006			378.00			78,558
PA						
2004			564.00			2,482
2005			597.00			1,254
2006			712.00			2,706
UT						
2004			393.00			118
2005			645.00			129
2006			636.00			140
WA						
2004			350.00			128,005
2005			344.00			142,006
2006			450.00			165,222
US ²						
2004	430.00	201.00	335.00	221,023	71,946	292,969
2005	461.00	193.00	358.00	232,291	61,572	293,863
2006	511.00	200.00	391.00	260,942	63,943	324,885

¹ Missing data not published to avoid disclosure of individual operations.

² Processed mostly canned, but includes small quantities dried and other uses not published separately to avoid disclosure of individual operations.

**Pears: Bearing Acreage, Yield, Production, and Utilization
by Type, State, and United States, 2004-2006 ¹**

Type, State and Year	Bearing Acreage	Yield Per Acre ²	Production		Utilization	
			Total	Utilized	Fresh	Processed
	<i>Acres</i>	<i>Tons</i>	<i>Tons</i>	<i>Tons</i>	<i>Tons</i>	<i>Tons</i>
Bartlett ³						
CA						
2004	13,000	17.20	223,000	223,000	68,000	155,000
2005	12,000	13.80	166,000	166,000	47,000	119,000
2006	12,000	16.60	199,000	189,000	59,000	130,000
OR						
2004	4,400	14.30	63,000	61,000	28,000	33,000
2005	4,200	13.80	58,000	57,000	28,000	29,000
2006	4,200	14.30	60,000	60,000	31,000	29,000
WA						
2004	11,500	14.90	171,000	171,000	51,000	120,000
2005	11,200	14.90	167,000	167,000	59,000	108,000
2006	11,000	15.20	167,000	167,000	56,000	111,000
Total						
2004	28,900	15.80	457,000	455,000	147,000	308,000
2005	27,400	14.30	391,000	390,000	134,000	256,000
2006	27,200	15.70	426,000	416,000	146,000	270,000
Other ⁴						
CA						
2004	4,000	12.00	48,000	48,000		
2005	4,000	9.00	36,000	36,000		
2006	4,000	10.00	40,000	40,000		
OR						
2004	12,500	12.00	150,000	150,000		
2005	12,000	11.20	134,000	134,000		
2006	12,000	12.30	148,000	148,000		
WA						
2004	14,000	13.90	195,000	195,000		
2005	13,500	18.20	246,000	246,000		
2006	13,000	15.40	200,000	200,000		
Total						
2004	30,500	12.90	393,000	393,000	348,000	45,000
2005	29,500	14.10	416,000	416,000	359,000	57,000
2006	29,000	13.40	388,000	388,000	345,000	43,000

¹ Missing data not published to avoid disclosure of individual operations.

² Yield is based on total production.

³ Processed mostly canned, but includes small quantities dried and other uses not published separately to avoid disclosure of individual operations.

⁴ Processed mostly juice, but includes small quantities canned and other uses not published separately to avoid disclosure of individual operations.

**Pears: Price and Value by Type, State,
and United States, 2004-2006**¹

Type, State and Year	Price per Ton			Value of Production		
	Fresh	Processed Exc. Dried	All	Fresh	Processed Inc. Dried	All
	<i>Dollars</i>	<i>Dollars</i>	<i>Dollars</i>	<i>1,000 Dollars</i>	<i>1,000 Dollars</i>	<i>1,000 Dollars</i>
Bartlett ²						
CA						
2004	261.00	251.00	252.00	17,748	38,540	56,288
2005	424.00	247.00	297.00	19,928	29,406	49,334
2006	210.00	249.00	237.00	12,390	32,319	44,709
OR						
2004	473.00	201.00	326.00	13,244	6,633	19,877
2005	485.00	213.00	347.00	13,580	6,176	19,756
2006	511.00	216.00	368.00	15,841	6,262	22,103
WA						
2004	530.00	196.00	296.00	27,030	23,505	50,535
2005	580.00	212.00	342.00	34,220	22,852	57,072
2006	652.00	202.00	353.00	36,512	22,454	58,966
Total						
2004	395.00	224.00	278.00	58,022	68,678	126,700
2005	505.00	228.00	323.00	67,728	58,434	126,162
2006	443.00	226.00	302.00	64,743	61,035	125,778
Other ³						
CA						
2004			503.00			24,144
2005			846.00			30,456
2006			589.00			23,560
OR						
2004			357.00			53,504
2005			329.00			44,052
2006			381.00			56,455
WA						
2004			397.00			77,470
2005			345.00			84,934
2006			531.00			106,256
Total						
2004	441.00	33.90	395.00	153,594	1,524	155,118
2005	439.00	33.70	383.00	157,521	1,921	159,442
2006	536.00	32.40	480.00	184,879	1,392	186,271

¹ Missing data not published to avoid disclosure of individual operations.

² Processed mostly canned, but includes small quantities dried and other uses not published separately to avoid disclosure of individual operations.

³ Processed mostly juice, but includes small quantities canned and other uses not published separately to avoid disclosure of individual operations.

**Hawaii Crops: Acreage Harvested, Yield, Utilized
Production, and Utilization, 2004-2006**

Crop and Year	Acreage Harvested	Yield Per Acre	Utilized Production	Utilization	
				Fresh	Processed
	<i>Acres</i>	<i>1,000 Pounds</i>	<i>1,000 Pounds</i>	<i>1,000 Pounds</i>	<i>1,000 Pounds</i>
Bananas					
2004	1,000	16.5	16,500	16,500	
2005	980	21.3	20,900	20,900	
2006	1,000	17.0	17,000	17,000	
Guavas					
2004	525	15.4	8,100		8,100
2005	620	13.1	8,100		8,100
2006 ¹					
Papayas					
2004	1,235	29.0	35,800	34,100	1,700
2005	1,480	22.2	32,900	30,700	2,200
2006	1,565	18.1	28,300	26,000	2,300
	<i>Acres</i>	<i>1,000 Pounds</i>	<i>Tons</i>	<i>Tons</i>	<i>Tons</i>
Pineapples ²					
2004	13,000		220,000	104,000	116,000
2005	14,000		212,000	106,000	106,000
2006	13,900		188,000	99,000	89,000

¹ Acreage, yield, and production estimates for 2006 will be published on May 11, 2007. Fresh and processed utilization estimates for 2006 will be published on July 6, 2007.

² Acreage is total acres in crop, not harvested acreage. Yield is not estimated. Production and processed utilization on a fresh weight basis.

Hawaii Crops: Price and Value, 2004-2006

Crop and Year	Price			Value of Production		
	Fresh	Processed	All	Fresh	Processed	Total
	<i>Dollars per Pound</i>	<i>Dollars per Pound</i>	<i>Dollars per Pound</i>	<i>1,000 Dollars</i>	<i>1,000 Dollars</i>	<i>1,000 Dollars</i>
Bananas						
2004	0.490		0.490	8,085		8,085
2005	0.439		0.439	9,175		9,175
2006	0.490		0.490	8,330		8,330
Guavas						
2004		0.144	0.144		1,166	1,166
2005		0.139	0.139		1,126	1,126
2006 ¹						
Papayas						
2004	0.361	0.030	0.345	12,310	51	12,361
2005	0.364	0.030	0.342	11,175	66	11,241
2006	0.423	0.030	0.391	10,998	69	11,067
	<i>Dollars per Ton</i>	<i>Dollars per Ton</i>	<i>Dollars per Ton</i>			
Pineapples ²						
2004	634.00	148.00	378.00	65,936	17,168	83,104
2005	600.00	148.00	374.00	63,600	15,688	79,288
2006	630.00	148.00	402.00	62,370	13,172	75,542

¹ Estimates for 2006 will be published on July 6, 2007.

² Processed price is for fresh fruit delivered to processing plant door. Fresh price is for fruit at wholesale establishments for local sales and at shippers dock for mainland and foreign sales.

**Apples: Unutilized Production by State
and United States, 2004-2006**

Crop and State	Unharvested Production			Harvested Not Sold		
	2004	2005	2006	2004	2005	2006
	<i>Million Pounds</i>	<i>Million Pounds</i>	<i>Million Pounds</i>	<i>Million Pounds</i>	<i>Million Pounds</i>	<i>Million Pounds</i>
Apples						
AZ		0.2	0.1			
AR ¹	0.7			0.1		
CO	1.0	4.0	1.0			
CT	0.5	0.5		0.5		
GA						1.0
IL	4.9	9.9	6.8	0.3	0.6	0.9
IN	2.0	10.0	6.5			
IA	0.5	0.2	0.9			
KS ¹	0.5			0.1		
KY	0.6	0.7	0.4	0.1	0.1	0.2
ME	2.5	2.0	0.5	1.5		
MD	0.1	0.1		1.0	0.1	
MA	3.5	2.5	1.0	1.5		
MI		5.0	10.0			
MN	4.1	4.6	4.8	1.0	1.4	1.2
MO		2.0	1.0	1.0		1.0
NH	1.0	1.0	0.5	1.5	0.5	
NJ	1.0	1.0		1.0		
NM ¹	1.3			0.8		
NY		10.0	20.0			
NC	23.0	12.0	4.0			3.0
OH		1.0	1.0			
OR	3.0	10.0				
PA	5.0	5.0	3.0			
RI			0.2	0.1	0.2	
SC	2.9	0.1	0.9	0.1	1.4	0.1
TN	0.5	1.0	1.0			
UT		1.9	0.7	0.6	0.4	
VT	2.5	3.0	3.5	1.0	0.5	
VA		3.0	5.0	3.0		
WV	1.0	3.0	2.0		1.0	
WI	2.0	2.5	5.0			
US	64.1	96.2	79.8	15.2	6.2	7.4

¹ Estimates discontinued in 2005.

**Miscellaneous Crops: Unutilized Production
by State and United States, 2004-2006**

Crop and State	Unharvested Production			Harvested Not Sold		
	2004	2005	2006	2004	2005	2006
	<i>Tons</i>	<i>Tons</i>	<i>Tons</i>	<i>Tons</i>	<i>Tons</i>	<i>Tons</i>
Peaches						
AL	3,360	1,050	2,000	640	950	2,000
AR	650	150	50	150	150	300
CA						
Freestone	2,000			44,000		
Clingstone						
CO	500	500	500	500	500	500
GA	1,000			2,000	3,000	4,000
ID	500					
IL	1,000	20	400	100	180	230
IN ¹						
KY	50	100	100			
LA	50					
MD			20			
MA	10	10				
MI			200			
NC			230			110
NJ	1,500	1,200		500	100	
NY		150	200	100		70
OH	100		240			
OK		140	100			
OR	100	100	100			
PA	300		100			200
SC	2,500	25,000	9,000	12,500	5,000	1,000
TN	150	200	100			
TX	2,000	290	830	300	110	10
UT	450	170	90		110	110
VA	50	70		50		50
WV			100	200	200	100
US	16,270	29,150	14,360	61,040	10,300	8,680
Nectarines						
CA	2,000			15,000		
	<i>Million Pounds</i>	<i>Million Pounds</i>	<i>Million Pounds</i>	<i>Million Pounds</i>	<i>Million Pounds</i>	<i>Million Pounds</i>
Cherries (Tart)						
MI						9.7
UT		2.0	3.0			
WA						0.6
WI						0.1
US		2.0	3.0			10.4
	<i>Barrels²</i>	<i>Barrels²</i>	<i>Barrels²</i>	<i>Barrels²</i>	<i>Barrels²</i>	<i>Barrels²</i>
Cranberries						
NJ				8,000		5,000
WI			100,000			
US			100,000	8,000		5,000

¹ Estimates discontinued in 2005.

² A barrel weighs 100 pounds.

**Miscellaneous Crops: Unutilized Production
by State and United States, 2004-2006**

Crop and State	Unharvested Production			Harvested Not Sold		
	2004	2005	2006	2004	2005	2006
	<i>Tons</i>	<i>Tons</i>	<i>Tons</i>	<i>Tons</i>	<i>Tons</i>	<i>Tons</i>
Apricots						
CA	8,500	5,000				
UT	40		15		5	10
US	8,540	5,000	15		5	10
Cherries (Sweet)						
CA				2,700	4,100	1,900
ID			40			230
MT	70		1,700	70	50	120
NY	10	50	90		10	10
OR	1,000	2,000	2,000		1,000	500
PA ¹	50					
UT		30	40		20	10
US	1,130	2,080	3,870	2,770	5,180	2,770
Grapes						
AR	300		100			
GA	100					
MI	4,500		5,000			
NY			2,000			
NC			100			
OR	4,600	2,000				
TX	250	1,200	3,900	50		
VA				300		200
US	9,750	3,200	11,100	350		200
Kiwifruit						
CA				2,000	1,000	600
Pears						
CA			10,000			
CO	100	300	300			
CT						
MI	60	30	100			
NY	1,600	300	400	1,000		
OR	2,000	1,000				
PA	100		100			
UT		20	15			
US	3,860	1,650	10,915	1,000		
Prunes & Plums						
ID	80	50	50			50
MI	470		200	30		
OR	5,500		2,000			
US	6,050	50	2,250	30		50
Prunes						
CA ²			2,800	1,000	3,000	5,600
Plums						
CA	1,000			11,000		

¹ Estimates discontinued in 2005.

² CA prunes are on a dried basis.

**Berries: Unutilized Production by State
and United States, 2004-2006**

Crop and State	Unharvested Production			Harvested Not Sold		
	2004	2005	2006	2004	2005	2006
	<i>1,000 Pounds</i>	<i>1,000 Pounds</i>	<i>1,000 Pounds</i>	<i>1,000 Pounds</i>	<i>1,000 Pounds</i>	<i>1,000 Pounds</i>
Red Raspberries OR			50			
Cultivated Blueberries						
AL	410	140	110		90	10
AR	100	150	50			
FL	400		40			
IN	100					
NY	300	100	200			
US	1,310	390	400		90	10
Boysenberries OR		30	100			
Loganberries OR	10	70	5			
Cultivated Blackberries (OR)						
Marion		400				
Evergreen						
Other		100	200			
All		500	200			

**Apples for Fresh Use: Prices Received, United States
July 2002 - December 2006¹**

Year	Jul	Aug	Sep	Oct	Nov	Dec	Jan ²	Feb	Mar	Apr	May	Jun
	<i>Dollars Per Pound</i>	<i>Dollars Per Pound</i>	<i>Dollars Per Pound</i>	<i>Dollars Per Pound</i>	<i>Dollars Per Pound</i>	<i>Dollars Per Pound</i>	<i>Dollars Per Pound</i>	<i>Dollars Per Pound</i>	<i>Dollars Per Pound</i>	<i>Dollars Per Pound</i>	<i>Dollars Per Pound</i>	<i>Dollars Per Pound</i>
2002	0.207	0.254	0.301	0.301	0.274	0.265	0.255	0.247	0.231	0.230	0.216	0.204
2003	0.208	0.346	0.270	0.278	0.305	0.288	0.297	0.300	0.304	0.298	0.296	0.296
2004	0.300	0.268	0.236	0.239	0.218	0.224	0.221	0.222	0.216	0.211	0.204	0.239
2005	0.098	0.165	0.259	0.256	0.260	0.217	0.217	0.206	0.198	0.193	0.189	0.229
2006	0.281	0.363	0.373	0.335	0.327	0.261						

¹ Equivalent packinghouse-door returns for CA, MI, NY, and WA; price at point of first sale for other States.

² January for the following year.

**Apples for Fresh Use: Monthly Average Prices, by State and United States,
July 2005 - August 2006^{1,2}**

State	2005						2006
	Jul	Aug	Sep	Oct	Nov	Dec	Jan
	<i>Dollars per Pound</i>	<i>Dollars per Pound</i>	<i>Dollars per Pound</i>	<i>Dollars per Pound</i>	<i>Dollars per Pound</i>	<i>Dollars per Pound</i>	<i>Dollars per Pound</i>
CA		0.385	0.371	0.391	0.311	0.380	0.476
MI		0.220	0.235	0.225	0.210	0.210	0.195
NY			0.261	0.283	0.268	0.270	0.269
OH		0.330	0.330	0.338	0.324	0.316	0.315
PA		0.190	0.185	0.185	0.180	0.180	0.180
VA			0.205	0.203	0.207	0.206	0.206
WA	0.098	0.111	0.253	0.249	0.266	0.206	0.207
US	0.098	0.165	0.259	0.256	0.260	0.217	0.217

State	2006						
	Feb	Mar	Apr	May	Jun	Jul	Aug
	<i>Dollars per Pound</i>	<i>Dollars per Pound</i>	<i>Dollars per Pound</i>	<i>Dollars per Pound</i>	<i>Dollars per Pound</i>	<i>Dollars per Pound</i>	<i>Dollars per Pound</i>
CA	0.449						0.473
MI	0.195	0.200	0.205	0.205	0.190		
NY	0.265	0.259	0.256	0.244	0.228		
OH	0.304	0.269	0.245				0.420
PA	0.190	0.190	0.200	0.200			0.307
VA	0.207	0.206	0.200				
WA	0.198	0.191	0.183	0.185	0.229	0.281	0.334
US	0.206	0.198	0.193	0.189	0.229	0.281	0.363

¹ Equivalent packinghouse-door returns for CA, MI, NY, and WA; price at point of first sale for other States.

² Prices for July and August 2006 are preliminary for all States and the U.S. except WA. These two months represent the start of the 2006 crop marketing season in most States, but in WA they are the final months of the 2005 crop marketing season.

**Peaches for Fresh Use: Monthly Prices Received,
United States, May 2002-September 2006¹**

State	May	Jun	Jul	Aug	Sep
	<i>Dollars per Ton</i>	<i>Dollars per Ton</i>	<i>Dollars per Ton</i>	<i>Dollars per Ton</i>	<i>Dollars per Ton</i>
2002	962	578	528	486	556
2003	945	509	524	455	489
2004	918	476	412	427	522
2005	756	596	576	743	622
2006	(²)	809	721	746	589

¹ Equivalent packinghouse-door returns for CA and WA; price at point of first sale for other States.

² Insufficient sales to establish a price.

**Pears for Fresh Use: Monthly Prices Received,
United States, July 2002 - December 2006¹**

Year	Jul	Aug	Sep	Oct	Nov	Dec	Jan ²	Feb	Mar	Apr	May	Jun
	<i>Dollars Per Ton</i>	<i>Dollars Per Ton</i>	<i>Dollars Per Ton</i>	<i>Dollars Per Ton</i>	<i>Dollars Per Ton</i>	<i>Dollars Per Ton</i>	<i>Dollars Per Ton</i>	<i>Dollars Per Ton</i>	<i>Dollars Per Ton</i>	<i>Dollars Per Ton</i>	<i>Dollars Per Ton</i>	<i>Dollars Per Ton</i>
2002	322	316	366	419	402	398	333	322	318	316	319	(³)
2003	335	272	293	412	387	384	352	332	336	359	443	(³)
2004	325	381	390	432	434	437	445	465	458	465	482	513
2005	667	583	541	440	451	423	404	392	339	356	419	596
2006	(³)	311	328	586	557	578						

¹ Equivalent packinghouse-door returns for CA, NY, and WA; price at point of first sale for other States.

² January for the following year.

³ Insufficient sales to establish a price.

**Grapes for Fresh Use: Monthly Prices Received,
United States, May 2002 - December 2006**

Year	May	Jun	Jul	Aug	Sep	Oct	Nov	Dec
	<i>Dollars Per Ton</i>	<i>Dollars Per Ton</i>	<i>Dollars Per Ton</i>	<i>Dollars Per Ton</i>	<i>Dollars Per Ton</i>	<i>Dollars Per Ton</i>	<i>Dollars Per Ton</i>	<i>Dollars Per Ton</i>
2002	1,000	905	830	650	640	590	610	720
2003	930	970	760	650	620	600	660	730
2004	1,540	830	570	560	680	830	1,030	1,160
2005	1,010	910	530	530	610	600	490	390
2006	(¹)	2,400	990	850	890	800	900	1,290

¹ Insufficient sales to establish a price.

**Pears: Equivalent On-tree Returns,
by State and United States, 2004-2006**

State and Variety	Fresh			Processed			All		
	2004	2005	2006	2004	2005	2006	2004	2005	2006
	<i>Dollars per Ton</i>	<i>Dollars per Ton</i>	<i>Dollars per Ton</i>	<i>Dollars per Ton</i>	<i>Dollars per Ton</i>	<i>Dollars per Ton</i>	<i>Dollars per Ton</i>	<i>Dollars per Ton</i>	<i>Dollars per Ton</i>
Bartlett									
CA	181	356	144	171	179	183	172	229	171
OR	403	425	431	131	153	136	256	287	288
WA	460	520	572	126	152	122	226	282	273
US	320	443	369	149	165	153	204	260	229
Other ¹									
US	379	333	449						

¹ Pears other than Bartlett; missing data unavailable or not published to avoid disclosure.

**Dried Figs: Equivalent Returns for Bulk Fruit at First Delivery Point,
by Utilization, California, 2004-2006**

	2004	2005	2006 ¹
	<i>Dollars per Ton</i>	<i>Dollars per Ton</i>	<i>Dollars per Ton</i>
Dried Figs			
Standard Grades (Dried Basis)	1,010	977	
Substandard Grades (Dried Basis)	60	60	
All Dried Figs (Dried Basis)	897	860	
All Dried Figs (Fresh Basis)	299	287	

¹ Price estimates for 2006 will be published on July 6, 2007.

**Apricots and Plums: Equivalent Returns,
California, 2004-2006**

	Equivalent First Delivery Point Returns			Equivalent On-tree Returns		
	2004	2005	2006	2004	2005	2006
	<i>Dollars per Ton</i>	<i>Dollars per Ton</i>	<i>Dollars per Ton</i>	<i>Dollars per Ton</i>	<i>Dollars per Ton</i>	<i>Dollars per Ton</i>
	Plums					
All Sales	516	553	701	433	470	618
	Apricots					
Fresh	538	1,090	1,510	438	923	1,343
Processing	280	265	318	218	134	187
All Sales	334	481	593	259	340	453

**Grapes: Equivalent First Delivery Point Returns,
by Utilization and Variety Group, California, 2004-2006** ¹

Variety and Utilization	2004	2005	2006
	<i>Dollars per Ton</i>	<i>Dollars per Ton</i>	<i>Dollars per Ton</i>
Raisin Varieties Dried by Variety or Type			
Natural Thompson Seedless	1,190	1,160	
Natural Muscats	(²)	(²)	
Natural Sultanas	880	1,040	
Natural Zante Currents	1,420	1,390	
Dehydrated, All Types	1,430	1,410	

¹ Missing data are not available.

² Insufficient sales to establish a price.

**Peaches for Fresh Use: Marketing Year Average Prices and Equivalent Returns
by State and United States, 2004-2006** ¹

State	Equivalent Packinghouse-door Returns ²			Equivalent On-tree Returns		
	2004	2005	2006	2004	2005	2006
	<i>Dollars per Ton</i>	<i>Dollars per Ton</i>	<i>Dollars per Ton</i>	<i>Dollars per Ton</i>	<i>Dollars per Ton</i>	<i>Dollars per Ton</i>
AL	661	808	977			
CA						
Freestone	341	540	597	287	471	528
CT	1,600	1,600	1,800			
GA				448	519	653
IL	770	1,250	1,200			
IN ³	1,380					
KY	1,290	1,000	1,260			
LA	1,420	1,730	1,730			
MD	563	950	1,030			
MA	1,500	1,500	1,940			
MI	660	780	860			
MO	780	980	880			
NY	920	900	784			
OH	1,000	1,220	1,220			
OK	1,030	1,010	1,100			
SC	573	733	866			
TN	1,070	1,280	1,410			
TX	1,540	1,690	1,640			
VA	660	800	790			
WV	478	724	578			
Oth Sts	733	867	970			
US	548	718	780			

¹ Some missing data are not published to avoid disclosure of individual operations.

² "Packinghouse-door" equivalents for CA; all other States are "As Sold."

³ Estimate discontinued in 2005.

**Nut Crops: Bearing Acreage and Yield by Crop,
State, and United States, 2004-2006**

Crop and State	Bearing Acreage			Yield per Acre ¹		
	2004	2005	2006	2004	2005	2006
	<i>Acres</i>	<i>Acres</i>	<i>Acres</i>	<i>Tons (In-Shell Basis)</i>	<i>Tons (In-Shell Basis)</i>	<i>Tons (In-Shell Basis)</i>
Hazelnuts OR	28,400	28,300	28,300	1.32	0.98	1.45
Walnuts (English) CA	214,000	215,000	215,000	1.52	1.65	1.63
				<i>Pounds (In-Shell Basis)</i>	<i>Pounds (In-Shell Basis)</i>	<i>Pounds (In-Shell Basis)</i>
Macadamia Nuts HI	17,800	18,000	17,800	3,170	3,000	3,090
Pistachios CA	93,000	105,000	110,000	3,730	2,700	2,160
				<i>Pounds (Shelled Basis)</i>	<i>Pounds (Shelled Basis)</i>	<i>Pounds (Shelled Basis)</i>
Almonds CA	570,000	580,000	580,000	1,760	1,580	1,890

¹ Yield is based on utilized production.

**Nut Crops: Production and Price by Crop,
State, and United States, 2004-2006**

Crop and State	Production			Price per Unit		
	2004	2005	2006	2004	2005	2006
	<i>Tons (In-Shell Basis)</i>	<i>Tons (In-Shell Basis)</i>	<i>Tons (In-Shell Basis)</i>	<i>Dollars per Ton</i>	<i>Dollars per Ton</i>	<i>Dollars per Ton</i>
Hazelnuts OR	37,500	27,600	41,000	1,440.00	2,240.00	1,100.00
Walnuts ¹ (English) CA	325,000	355,000	350,000	1,390.00	1,570.00	
	1,000 Pounds					
	<i>(In-Shell Basis)</i>	<i>(In-Shell Basis)</i>	<i>(In-Shell Basis)</i>	<i>Dollars per Pound</i>	<i>Dollars per Pound</i>	<i>Dollars per Pound</i>
Macadamia Nuts HI	56,500	54,000	55,000	0.730	0.810	0.700
Pistachios CA	347,000	283,000	238,000	1.340	2.050	1.920
	1,000 Pounds					
	<i>(Shelled Basis)</i>	<i>(Shelled Basis)</i>	<i>(Shelled Basis)</i>	<i>Dollars per Pound</i>	<i>Dollars per Pound</i>	<i>Dollars per Pound</i>
Almonds ² CA	1,005,000	915,000	1,095,000	2.210	2.810	2.050

¹ Price estimates for 2006 will be published on July 6, 2007.

² Price and value are based on the edible portion of the crop only. Production includes inedible quantities of no value as follows: 2004 - 14.5 million pounds, 2005 - 16.1 million pounds, and 2006 - 22.7 million pounds.

Nut Crops: Use by Crop, State, and United States, 2004-2006

Crop and State	Production					
	Sold In-Shell			Sold Shelled ¹		
	2004	2005	2006	2004	2005	2006
	<i>Tons</i>	<i>Tons</i>	<i>Tons</i>	<i>Tons</i>	<i>Tons</i>	<i>Tons</i>
Hazelnuts ² OR	22,000	14,600		15,500	13,000	
Walnuts ² (English) CA	75,000	82,000		250,000	273,000	
	<i>1,000 Pounds</i>	<i>1,000 Pounds</i>	<i>1,000 Pounds</i>	<i>1,000 Pounds</i>	<i>1,000 Pounds</i>	<i>1,000 Pounds</i>
Pecans ² US	26,000	47,550		159,800	232,700	
	<i>Marketable In-Shell</i>	<i>Marketable In-Shell</i>	<i>Marketable In-Shell</i>	<i>Shelling Stock ¹</i>	<i>Shelling Stock ¹</i>	<i>Shelling Stock ¹</i>
Pistachios CA	254,000	215,000	201,000	93,000	68,000	37,000

¹ In-shell basis.

² Estimates for 2006 will be published on July 6, 2007.

**Nut Crops: Value and Meat Production by Crop,
State, and United States, 2004-2006**

Crop and State	Value of Utilized Production		
	2004	2005	2006
	<i>1,000 Dollars</i>	<i>1,000 Dollars</i>	<i>1,000 Dollars</i>
Hazelnuts OR	54,000	61,824	45,100
Walnuts ¹ (English) CA	451,750	557,350	
Macadamia Nuts HI	41,245	43,740	38,500
Pistachios CA	464,980	580,150	456,960
Almonds ² CA	2,189,005	2,525,909	2,198,215
	Meat Production of Nuts Sold Shelled		
	2004	2005	2006
	<i>Tons</i>	<i>Tons</i>	<i>Tons</i>
Hazelnuts ¹ OR	5,900	4,900	
Walnuts ¹ (English) CA	108,600	121,500	
	<i>1,000 Pounds</i>	<i>1,000 Pounds</i>	<i>1,000 Pounds</i>
Pecans ¹ US	71,000	104,000	
Pistachios CA	45,700	33,400	18,000

¹ Estimates for 2006 will be published on July 6, 2007.

² Price and value are based on the edible portion of the crop only. Production includes inedible quantities of no value as follows: 2004 - 14.5 million pounds, 2005 - 16.1 million pounds and 2006 - 22.7 million pounds.

**Pecans: Utilized Production and Price by Variety,
State, and United States, 2004-2006**

Variety and State	Utilized Production			Price per Pound		
	2004	2005	2006	2004	2005	2006
	<i>1,000 Pounds</i>	<i>1,000 Pounds</i>	<i>1,000 Pounds</i>	<i>Dollars</i>	<i>Dollars</i>	<i>Dollars</i>
Improved Varieties ¹						
AL	1,000	3,200	5,100	1.210	1.160	1.540
AZ	14,000	22,000	14,000	1.850	1.600	1.700
AR	1,000	1,100	950	1.400	1.400	1.330
CA	3,500	3,950	3,700	2.210	1.800	1.600
FL	400	300	200	1.500	1.400	1.800
GA	42,000	72,000	36,000	1.770	1.320	1.620
LA	2,500	1,000	4,000	1.400	1.750	1.300
MS	700	800	2,000	1.300	1.900	1.300
MO ²		200	160		1.880	1.800
NM	39,000	65,000	46,000	2.280	1.700	1.850
NC	70	1,650	500	2.000	1.000	1.350
OK	6,000	6,000	5,000	1.600	1.900	2.100
SC	800	1,500	1,000	1.800	1.090	1.900
TX	28,000	50,000	25,000	1.840	1.590	2.020
US	138,970	228,700	143,610	1.920	1.540	1.770
Native and Seedling						
AL	100	800	900	0.840	0.840	1.070
AR	700	1,200	850	1.200	1.100	1.150
FL	100	700	300	0.950	0.850	1.500
GA	3,000	8,000	4,000	1.240	0.800	1.160
KS	1,800	3,200	2,000	1.750	1.300	1.370
LA	6,500	4,000	15,000	0.950	1.000	0.850
MS	300	200	500	0.800	1.200	1.100
MO ²		2,400	1,140		1.240	1.250
NC	30	350	100	1.500	0.800	0.750
OK	22,000	15,000	9,000	1.350	1.200	1.200
SC	300	700	500	1.400	0.820	1.400
TX	12,000	15,000	11,000	1.270	1.090	0.990
US	46,830	51,550	45,290	1.280	1.080	1.040
All Pecans						
AL	1,100	4,000	6,000	1.180	1.100	1.470
AZ	14,000	22,000	14,000	1.850	1.600	1.700
AR	1,700	2,300	1,800	1.320	1.240	1.250
CA	3,500	3,950	3,700	2.210	1.800	1.600
FL	500	1,000	500	1.390	1.020	1.620
GA	45,000	80,000	40,000	1.730	1.270	1.570
KS	1,800	3,200	2,000	1.750	1.300	1.370
LA	9,000	5,000	19,000	1.080	1.150	0.945
MS	1,000	1,000	2,500	1.150	1.760	1.260
MO ²		2,600	1,300		1.290	1.320
NM	39,000	65,000	46,000	2.280	1.700	1.850
NC	100	2,000	600	1.850	0.965	1.250
OK	28,000	21,000	14,000	1.400	1.400	1.520
SC	1,100	2,200	1,500	1.690	1.000	1.730
TX	40,000	65,000	36,000	1.670	1.470	1.710
US	185,800	280,250	188,900	1.760	1.450	1.590

¹ Budded, grafted, or topworked varieties.

² Estimates began in 2005.

**Pecans: Value of Production by Variety,
State, and United States, 2004-2006**

Variety and State	Value of Production		
	2004	2005	2006
	<i>1,000 Dollars</i>	<i>1,000 Dollars</i>	<i>1,000 Dollars</i>
Improved Varieties ¹			
AL	1,210	3,712	7,854
AZ	25,900	35,200	23,800
AR	1,400	1,540	1,264
CA	7,735	7,110	5,920
FL	600	420	360
GA	74,340	95,040	58,320
LA	3,500	1,750	5,200
MS	910	1,520	2,600
MO ²		376	288
NM	88,920	110,500	85,100
NC	140	1,650	675
OK	9,600	11,400	10,500
SC	1,440	1,635	1,900
TX	51,520	79,500	50,500
US	267,215	351,353	254,281
Native and Seedling			
AL	84	672	963
AR	840	1,320	978
FL	95	595	450
GA	3,720	6,400	4,640
KS	3,150	4,160	2,740
LA	6,175	4,000	12,750
MS	240	240	550
MO ²		2,976	1,425
NC	45	280	75
OK	29,700	18,000	10,800
SC	420	574	700
TX	15,240	16,350	10,890
US	59,709	55,567	46,961
All Pecans			
AL	1,294	4,384	8,817
AZ	25,900	35,200	23,800
AR	2,240	2,860	2,242
CA	7,735	7,110	5,920
FL	695	1,015	810
GA	78,060	101,440	62,960
KS	3,150	4,160	2,740
LA	9,675	5,750	17,950
MS	1,150	1,760	3,150
MO ²		3,352	1,713
NM	88,920	110,500	85,100
NC	185	1,930	750
OK	39,300	29,400	21,300
SC	1,860	2,209	2,600
TX	66,760	95,850	61,390
US	326,924	406,920	301,242

¹ Budded, grafted, or topworked varieties.

² Estimates began in 2005.

Definition of Terms

Apples, Commercial Crop refers to orchards of 100 or more bearing age trees.

Bearing Acreage - An orchard, grove, or vineyard is considered bearing when it reaches an age when it can normally be expected to produce a commercially significant quantity of the crop. Bearing age is a function of many factors including variety, rootstock, year planted, etc. Bearing acreage is primarily based upon periodic orchard surveys. In non-survey years, bearing acreage is based on trends, county extension service data, end-of-year production surveys, and other indications.

Prices are a marketing year average for all methods of sale. For a crop sold for both fresh market and processing, the **Marketing Year Average Price (MYA)** is a weighted average of the fresh and processing price.

Prices for fresh fruit are the average prices producers receive at the point of first sale. This is commonly referred to as the **average price as sold**. Since the point of first sale is not the same for all producers, prices for the various methods of sale are weighted by the quantity sold. For example, in a given State, part of the fruit is sold free on board (F.O.B.) packed by growers, part is sold as bulk fruit at the packinghouse door, and some is sold retail at roadside stands. The fresh fruit **average price as sold** is a weighted average of the average price for each method of sale. The exception is fresh fruit sales in California, Washington, and New York (apples only) which are equivalent returns at packinghouse door. The equivalent packinghouse returns represent adjusted prices.

F.O.B. packed prices are adjusted to an equivalent incoming packinghouse door price by subtracting all costs that accumulate between the incoming packinghouse door and the F.O.B. price. These costs include grading, packing, inspecting fees, selling, and other costs.

Prices for fruit sold for processing are equivalent returns for fruit delivered to the processing plant door except for cranberries, California olives, and clingstone peaches, which are priced at the first delivery point.

Crop value estimates in this report cover the marketing season or crop year and should not be confused with cash receipts from these crops which are on a calendar year.

Total Production is the quantity actually harvested plus quantities which would have been acceptable for fresh market or processing but were not harvested because of economic or natural reasons.

Unutilized Production is the difference between total and utilized production which is marketable fruit not harvested for economic or natural reasons and harvested fruit not sold or utilized.

Harvested not sold is fruit of marketable quality that was picked but not sold for various reasons. Harvested not sold amounts up to 2 percent of total production are considered normal seasonal losses and are excluded from total production. Reported values are above and beyond these normal seasonal losses.

Unharvested Production is marketable fruit produced, but not harvested for various reasons. Unharvested amounts up to 2 percent of total production are considered normal seasonal losses and are excluded from total production. Reported values are above and beyond these normal seasonal losses.

Utilization refers to first utilization, not necessarily final utilization. For example, frozen fruit includes some fruit that may be later used for making preserves. Grade-outs for fresh market fruit which are processed are included in the processing quantity. Fruit graded-out from canning or freezing and utilized for juice is included with juice.

Utilized Production is the amount sold plus the quantities used at home or held in storage.

Yield per Acre is based on total production which includes unharvested production and fruit harvested but not sold due to marketing conditions.

State Value of Utilized Production and MYA Price Computations

The following procedure is used to compute State Values of Utilized Production and MYA Prices:

Fresh Market Value =	Fresh Market MYA Times Fresh Market Utilization
Process Market Value =	Process Market MYA Times Process Market Utilization
"All" Sales Value =	Fresh Market Value Plus Process Market Value
"All" Sales MYA =	"All" Sales Value Divided By "All" Sales Utilization

For commodities with components not identified by market channel, substitute breakdown name for fresh/processing market and use the same procedure.

U.S. MYA Price Computations

The following procedure is used to compute the U.S. MYA Prices:

Fresh Market MYA =	Fresh Market Value For All States Divided By Fresh Market Utilization For All States
Process Market MYA =	Process Market Value For All States Divided By Process Market Utilization For All States
"All" Sales MYA =	Sales Value For All States Divided By Sales Utilization For All States

Marketing Seasons for Noncitrus Fruits ¹

Apples

Eastern States, excluding GA, NJ, and SC August - June
 Central States, excluding IA, KY, MN, MO, TN, and WI July - May
 Western States, excluding AZ August - June
 All Other States August - December

Apricots

CA May 15 - July 5
 UT June 10 - August 15
 WA June 20 - August 1

Avocados

CA November 1 - October 31
 FL June 20 - March 1
 HI January 1 - December 31

Bananas January 1 - December 31

Cherries, Sweet

CA April 25 - June 15
 MT July 20 - August 20
 All Other States June - July

Cherries, Tart June 25 - August 15

Cranberries September 15 - January 1

Dates August 15 - March 15

Figs June 5 - October 30

Grapes

Table (CA) May 25 - July 20
 Raisin (CA) June 5 - July 31
 Wine (CA and WA) August 15 - December 15
 Juice (WA) September 15 - November 1
 All Other States July - October

Guavas January 1 - December 31

Kiwifruit October 1 - May 31

¹See footnote on next page.

Marketing Seasons for Noncitrus Fruits ¹ (continued)

Nectarines	April 30 - October 15
Olives	
Fresh, Canned, and Other Processing	August 1 - July 31
Crushed for Oil	December 1 - November 30
Papayas	January 1 - December 31
Peaches	
Clingstone (CA)	July 10 - September 15
Freestone (CA)	April 20 - October 10
GA and SC	May - August
All Other States	July - September
Pears	
Bartlett (CA, OR, and WA)	July - December
Other (CA, OR, and WA)	July - June
All Other States	August - November
Pineapples	January 1 - December 31
Plums (CA)	May 15 - October 20
Prunes, Dried (CA)	August 20 - April 15
Prunes and Plums	
Fresh and Canning (ID, MI, OR, WA)	August 15 - October 15

Marketing Seasons for Tree Nuts ¹

Almonds	August 5 - November 15
Hazelnuts	October 1 - November 30
Macadamia Nuts	July 1 - June 30
Pecans	October 1 - March 31
Pistachios	September 30 - January 30
Walnuts	September 15 - November 10

¹For detail by States, see Agricultural Handbook No. 729, "Fruits and Tree Nuts: Blooming, Harvesting, and Marketing Dates," Dec 2006.

Reliability of January Noncitrus Fruit Production Estimates

Reliability: To assist users in evaluating the reliability of the January noncitrus fruit total production estimates, the "Root Mean Square Error," a statistical measure based on past performance, is computed. The deviation between the January preliminary total production estimate and the final estimate is expressed as a percentage of the final estimate. The average of squared percentage deviations for the latest 20-year period is computed. The square root of the average becomes statistically the "Root Mean Square Error." Probability statements can be made concerning expected differences in the current estimate relative to the final end-of-season estimate, assuming that factors affecting this year's estimate are not different from those influencing recent years. For example, the "Root Mean Square Error" for the January apple total production estimate is 3.0 percent. This means that chances are 2 out of 3 that the current production estimate will not be above or below the final estimate by more than 3.0 percent. Chances are 9 out of 10 (90 percent confidence level) that the difference will not exceed 5.2 percent.

Also, shown in the following table is a 20-year record for selected crops of the differences between the January preliminary total production estimate and the final estimate. Using apples again as an example, changes between the January preliminary estimate and the final estimate during the last 20 years have averaged 115.4 thousand tons, ranging from 6.1 thousand tons to 398.9 thousand tons. The January preliminary estimate has been below the final estimate 8 times and above 12 times. This does not imply that the January estimate this year is likely to understate or overstate the final production.

Reliability of Selected Noncitrus Fruit Estimates

Crop	Unit	Root Mean Square Error		20-Year Record of Differences Between Initial Estimate and Final Estimate				
		Percent	90 Percent Confidence Interval	Quantity			Years	
				Average	Smallest	Largest	Below Final	Above Final
				<i>1,000</i>	<i>1,000</i>	<i>1,000</i>	<i>Number</i>	<i>Number</i>
Apples	Tons	3.0	5.2	115.4	6.1	398.9	8	12
Grapes	Tons	4.2	7.3	211.3	8.6	838.8	17	3
Peaches	Tons	1.4	2.4	14.1	1.2	29.9	9	11
Pears	Tons	2.9	5.0	19.9	1.5	63.9	14	6

Information Contacts

Listed below are the commodity statisticians in the Crops Branch of the National Agricultural Statistics Service to contact for additional information.

Jeff Geuder, Chief	(202) 720-2127
Field Crops Section	
Greg Thessen, Head	(202) 720-2127
Shiela Corley - Cotton, Cotton Ginnings	(202) 720-5944
Todd Ballard - Wheat, Rye	(202) 720-8068
Ty Kalasus - Corn, Proso Millet, Flaxseed	(202) 720-9526
Dennis Koong - Peanuts, Rice	(202) 720-7688
Travis Thorson - Soybeans, Sunflower, Other Oilseeds	(202) 720-7369
King Whetstone - Hay, Oats, Sorghum	(202) 690-3234
Brian Young - Crop Weather, Barley, Sugar Crops	(202) 720-7621
Fruits, Vegetables & Special Crops Section	
Lance Honig, Head	(202) 720-2127
Leslie Colburn - Berries, Grapes, Maple Syrup, Tobacco	(202) 720-7235
Debbie Flippin - Fresh and Processing Vegetables, Onions, Strawberries	(202) 720-2157
Rich Holcomb - Citrus, Tropical Fruits	(202) 720-5412
Doug Marousek - Floriculture, Nursery, Tree Nuts	(202) 720-4215
Dan Norris - Austrian Winter Peas, Dry Edible Peas, Lentils, Mint, Mushrooms, Peaches, Pears, Wrinkled Seed Peas	(202) 720-3250
Faye Propsom- Apples, Apricots, Cherries, Cranberries, Plums, Prunes	(202) 720-4288
Kim Ritchie - Hops	(360) 902-1940
Cathy Scherrer - Dry Beans, Potatoes, Sweet Potatoes	(202) 720-4285

ACCESS TO REPORTS!!

For your convenience, there are several ways to obtain NASS reports, data products, and services:

INTERNET ACCESS

All NASS reports are available free of charge on the worldwide Internet. For access, connect to the Internet and go to the NASS Home Page at: www.nass.usda.gov.

E-MAIL SUBSCRIPTION

All NASS reports are available by subscription free of charge direct to your e-mail address. Starting with the NASS Home Page at www.nass.usda.gov, under the right navigation, *Receive reports by Email*, click on **National** or **State**. Follow the instructions on the screen.

PRINTED REPORTS OR DATA PRODUCTS

CALL OUR TOLL-FREE ORDER DESK: 800-999-6779 (U.S. and Canada)
Other areas, please call 703-605-6220 FAX: 703-605-6900
(Visa, MasterCard, check, or money order acceptable for payment.)

ASSISTANCE

For **assistance** with general agricultural statistics or further information about NASS or its products or services, contact the **Agricultural Statistics Hotline** at **800-727-9540**, 7:30 a.m. to 4:00 p.m. ET, or e-mail: nass@nass.usda.gov.

The U.S. Department of Agriculture (USDA) prohibits discrimination in all its programs and activities on the basis of race, color, national origin, age, disability, and where applicable, sex, marital status, familial status, parental status, religion, sexual orientation, genetic information, political beliefs, reprisal, or because all or a part of an individual's income is derived from any public assistance program. (Not all prohibited bases apply to all programs.) Persons with disabilities who require alternative means for communication of program information (Braille, large print, audiotape, etc.) should contact USDA's TARGET Center at (202) 720-2600 (voice and TDD).

To file a complaint of discrimination, write to USDA, Director, Office of Civil Rights, 1400 Independence Avenue, S.W., Washington, D.C. 20250-9410, or call (800) 795-3272 (voice) or (202) 720-6382 (TDD). USDA is an equal opportunity provider and employer.

Agriculture at the Crossroads: Energy, Farm & Rural Policy



March 1-2, 2007
Crystal Gateway
Marriott Hotel
Arlington, Virginia

The Forum will feature Secretary Mike Johanns, distinguished guest speakers, and a panel of America's leading CEOs focusing on the impact of bioenergy on agriculture. Attendees at the 83rd annual Outlook Forum will include top officials, industry analysts, business leaders, farmers and ranchers, and other experts in agriculture.

- \$300 if you register by Feb. 5, 2007
- \$350 if you register after Feb. 5, 2007

For a program preview & to register, go to:
www.usda.gov/oce/forum

- Topical sessions, including luncheon and dinner speakers
- Networking opportunities, 1,500 expected to attend

Find full program and registration details at agforum@oce.usda.gov or write to 2007 Outlook Forum, Room 4426 South Building, USDA, Washington, D.C. 20250-3812.