



United States
Department of
Agriculture

National
Agricultural
Statistics
Service



Noncitrus Fruits and Nuts 2009 Preliminary Summary

January 2010

Fr Nt 1-3 (10) a

USDA



Contents

	Page
Noncitrus Fruits and Tree Nuts	
Bearing Acreage, U.S.	7
Bearing Acreage and Yield per Acre by Crop	4
Narrative	3
Price and Value by Crop	6
Production Utilization, U.S.	7
Total and Utilized Production by Crop.	5
Noncitrus Fruits	
Apples, Commercial Crop	10, 64, 68
Apricots.....	20, 26, 27, 66, 70
Avocados	20
Bananas.....	62
Berries (excluding strawberries)	30, 67
California Dry Fruits.....	27
Cherries, Sweet	36, 40, 66
Cherries, Tart	38, 40, 65
Cranberries.....	42
Dates	20
Figs	22, 26, 27
Grapes	27, 44, 66, 69, 70
Guavas	62
Hawaii Crops	62
Kiwifruit	22, 66
Nectarines	22
Olives	22, 26
Papayas	62
Peaches	27, 50, 65, 69
Pears.....	58, 66, 69, 70
Pineapples	62
Plums	22, 70
Prunes (dried basis).....	24, 27, 66
Prunes and Plums.....	24, 26, 66
Strawberries	28
Unutilized Production	64
Tree Nuts	
Almonds.....	71, 72
Hazelnuts	72
Macadamia Nuts	72
Pecans	73, 74
Pistachios	72
Walnuts.....	71, 72
Definition of Terms	76
Information Contacts	81
Marketing Seasons	78
Reliability of Production Data in this Report	80
State Value of Utilized Production Computation	77
U.S. MYA Price Computation	77

This page intentionally left blank.

2009 Noncitrus Fruit Utilized Production Slightly Down, Value Slightly Down

In 2009, the Nation's utilized production of the leading noncitrus fruit crops totaled 17.6 million tons, slightly down from the 2008 utilized production. Utilized production increased from 2008 for sweet cherries, tart cherries, red raspberries, CA prunes, prunes and plums (ID, MI, OR, and WA), blackberries, strawberries, pears, CA dates, and apples. Utilized production decreased from 2008 for nectarines, CA olives, apricots, CA plums, cranberries, bananas, papayas, grapes, peaches, ME wild blueberries, and figs.

The value of utilized production for noncitrus fruit crops totaled 11.0 billion dollars, slightly down from 2008. The value of utilized production for nectarines increased 21 percent, CA plums were up 18 percent, and strawberries increased 12 percent. However, the value of utilized production for OR black raspberries decreased 80 percent, ME wild blueberries down 42 percent, red raspberries are down 36 percent, cranberries decreased 21 percent, CA olives decreased 13 percent, sweet cherries are down 12 percent, and pears decreased 11 percent.

Highlights

Utilized apple production for 2009 is estimated at 9.74 billion pounds, slightly up from 2008. Utilized production in Washington decreased 3 percent to 5.50 billion pounds from 2008. New York's utilized production increased 6 percent from 2008, and Michigan's utilized production increased 86 percent from 2008. Washington reported overall production that was lower than last year due to hot weather in late July and early August affecting the crop. Growers were concerned about sunburned fruit resulting from a two week period of extremely high temperatures. The major varieties showed the largest production decline due to the high volume produced last year. Light blooms, scattered frost and hail damage were also reported by some producers. New York's apple growers experienced a better growing season than last year. Despite a dry September, the Michigan apple yield will set a record high. Most of the Southeast and Midwest apple crop States have recovered from the 2007 frost, with yields and production amounts going above historic levels.

Utilized grape production for 2009 is estimated at 7.04 million tons, down 4 percent from the 2008 crop. The California crop, which accounts for 90 percent of the 2009 U.S. utilized grape production, is down 4 percent from the previous year. Also for California, wine type production increased 13 percent, while table type and raisin type production decreased 12 percent and 20 percent from 2008, respectively. Utilized production decreased from 2008 in all grape producing States except Georgia, Michigan, Oregon, Virginia, and Washington. The most notable decreases in utilized production were in New York and Pennsylvania where a hard freeze in May caused bud and leaf damage and lack of sun over the summer months resulted in low Brix levels.

Utilized peach production for 2009 is estimated at 1.08 million tons, down 3 percent from both the previous year and 2007. The California crop, accounting for 75 percent of the U.S. utilized peach production, is down 5 percent from 2008. For California, the Clingstone peach variety utilized production is up 10 percent, but the Freestone peach variety utilized production is down 19 percent from 2008. California experienced an adequate number of chilling hours, thus benefiting the crop. Freezing temperatures hit California in early March, which resulted in frost damage in some areas. Frost damage, along with a decrease in bearing acres, have resulted in lower production for the 2009 crop.

Utilized pear production for 2009 is estimated at 934,820 tons, up 8 percent from the previous year. Washington, the top producing State, utilized 440,000 tons, up 17 percent from 2008. California, the second largest producer at 255,000 tons, is up 5 percent from the previous season. Utilized pear production in Oregon, the third largest producing State at 220,000 tons, is down 5 percent from 2008.

U.S. Tree Nut Production Down 8 Percent, Value Down 6 Percent

U.S. tree nut production for crop year 2009 is 1.99 million tons (in-shell basis), 8 percent below the previous year. Almond crop production, at 1.16 million tons is down 18 percent from 2008. Walnut production in 2009, at 415,000 tons, is down 5 percent from the previous year. Pistachio production, at 193,000 tons is 39 percent more than 2008. Pecan production in 2009 totals 145,300 tons, a 50 percent increase from 2008. The hazelnut crop, at 47,000 tons, is 47 percent larger than the previous year. Macadamia nut production is 23,000 tons, down 8 percent.

Value of U.S. utilized nut production in 2009 is 3.60 billion dollars, down 6 percent from the 2008 value. The 2009 utilized almond crop is valued at 1.78 billion dollars, 24 percent less than the previous year. Pistachio utilized crop value for 2009, at 787 million dollars, is 38 percent more than 2008. The value of the 2009 utilized pecan crop increased 53 percent to 398 million dollars. Hazelnut utilized crop value, at 74.7 million dollars, is 44 percent above last year. The 2009 utilized macadamia nut crop is valued at 30.8 million dollars, down 8 percent from 2008.

**Noncitrus Fruits and Nuts: Bearing Acreage and Yield per Acre
by Crop, United States, 2007-2009**

Crop	Bearing Acreage			Yield per Acre		
	2007	2008	2009	2007	2008	2009
	<i>Acres</i>	<i>Acres</i>	<i>Acres</i>	<i>Tons Fresh Equivalent</i>	<i>Tons Fresh Equivalent</i>	<i>Tons Fresh Equivalent</i>
Noncitrus Fruits						
Apples	350,890	350,590	348,400	13.00	13.70	14.30
Apricots	12,650	12,450	12,350	6.99	6.56	5.53
Avocados ¹	73,350	72,830		2.63	1.59	
Bananas (HI) ²	1,300	1,100	1,100	9.85	7.90	7.00
Blackberries (OR) ^{2,3}	6,700	6,700	6,900	4.40	3.37	3.64
Blueberries						
Cultivated ²	53,420	60,180	63,170	2.69	2.90	2.86
Wild (ME) ⁴						
Boysenberries ²	810	770	600	3.13	2.08	2.67
Loganberries (OR) ⁵	40	30		1.13	1.00	
Raspberries ²						
Black (OR)	1,400	1,500	1,100	1.31	1.04	1.43
Red	11,200	11,100	11,100	2.69	2.71	3.21
All (CA)	3,500	3,400	3,400	11.30	8.00	8.50
Cherries, Sweet	81,670	82,610	85,310	3.80	3.00	5.04
Cherries, Tart	34,750	34,750	35,550	3.65	3.09	4.97
Cranberries	38,100	38,200	38,500	8.60	10.30	8.96
Dates (CA)	5,300	5,100	5,400	3.08	3.71	3.80
Figs (CA)	9,100	9,400	9,300	5.25	4.61	4.60
Grapes	936,500	935,950	940,700	7.54	7.82	7.51
Guavas (HI) ^{2,6}	170	160		12.70	11.00	
Kiwifruit (CA)	4,200	4,200	4,200	5.83	5.48	6.07
Nectarines	32,400	32,300	30,300	8.73	9.37	7.08
Olives (CA)	30,000	30,000	31,000	4.42	2.23	1.38
Papayas (HI) ²	1,310	1,380	1,325	12.80	12.20	11.80
Peaches	125,310	124,000	119,730	8.99	9.16	9.24
Pears	58,640	58,620	57,000	14.90	14.80	16.40
Plums (CA)	29,500	29,500	26,600	5.15	5.42	4.92
Prunes (CA)	64,000	64,000	64,000	3.76	5.75	7.33
Prunes & Plums ⁷	3,340	3,240	3,190	3.62	4.78	5.89
Strawberries ²	52,180	54,470	58,080	23.50	23.30	24.10
Total	2,021,730	2,033,730	1,958,305			
				<i>Tons In-Shell Equivalent</i>	<i>Tons In-Shell Equivalent</i>	<i>Tons In-Shell Equivalent</i>
Tree Nuts						
Almonds (CA) ⁸	640,000	680,000	710,000	1.89	2.08	1.64
Hazelnuts (OR)	28,600	28,400	28,400	1.29	1.13	1.65
Macadamias (HI)	15,000	15,000	15,000	1.37	1.67	1.54
Pecans ⁴						
Pistachios (CA)	115,000	118,000	126,000	1.81	1.18	1.53
Walnuts (CA)	218,000	223,000	223,000	1.50	1.96	1.86
Total	1,016,600	1,064,400	1,102,400			

¹ Estimates for 2009 will be published on July 7, 2010.

² Harvested acreage. Yield based on utilized production.

³ Cultivated.

⁴ Bearing acreage and yield not estimated.

⁵ Estimates discontinued in 2009.

⁶ Estimates for 2009 will be published on May 11, 2010.

⁷ ID, MI, OR, and WA.

⁸ Yield based on in-shell equivalent. Shelling ratios are: 2007 - 0.573; 2008 - 0.578; 2009 - 0.598.

**Noncitrus Fruits and Nuts: Total and Utilized Production
by Crop, United States, 2007-2009**

Crop	Total Production			Utilized Production		
	2007	2008	2009	2007	2008	2009
	<i>1,000 Tons Fresh Equivalent</i>	<i>1,000 Tons Fresh Equivalent</i>	<i>1,000 Tons Fresh Equivalent</i>	<i>1,000 Tons Fresh Equivalent</i>	<i>1,000 Tons Fresh Equivalent</i>	<i>1,000 Tons Fresh Equivalent</i>
Noncitrus Fruits						
Apples	4,544.7	4,804.7	4,976.8	4,522.7	4,757.9	4,869.6
Apricots	88.5	81.6	68.3	88.5	77.5	68.3
Avocados ¹	193.1	116.0		193.1	116.0	
Bananas (HI) ²				12.8	8.7	7.7
Blackberries (OR) ³	32.0	23.6	25.7	29.5	22.6	25.1
Blueberries						
Cultivated	143.6	174.5	182.1	143.4	174.3	180.7
Wild (ME)	38.6	45.0	44.3	38.6	45.0	44.3
Boysenberries	2.8	1.7	1.7	2.5	1.6	1.6
Loganberries (OR) ^{4 5}						
Raspberries						
Black (OR)	1.9	1.6	1.7	1.8	1.6	1.6
Red	30.1	30.0	35.6	30.1	30.0	35.6
All (CA)	39.4	27.2	28.9	39.4	27.2	28.9
Cherries, Sweet	310.7	248.1	429.9	306.2	240.7	375.6
Cherries, Tart	126.6	107.2	176.5	124.4	106.6	160.3
Cranberries	327.7	393.3	344.8	327.7	393.3	344.8
Dates (CA)	16.3	18.9	20.5	16.3	18.9	20.5
Figs (CA)	47.8	43.3	42.8	47.8	43.3	42.8
Grapes	7,057.3	7,319.3	7,067.6	7,056.3	7,305.6	7,040.1
Guavas (HI) ^{2 6}				2.2	1.8	
Kiwifruit (CA)	24.5	23.0	25.5	23.7	22.0	24.6
Nectarines	283.0	302.5	214.5	283.0	302.5	214.5
Olives (CA)	132.5	66.8	42.8	132.5	66.8	42.8
Papayas (HI) ²				16.7	16.8	15.7
Peaches	1,127.2	1,135.3	1,105.7	1,115.9	1,113.5	1,084.6
Pears	873.0	869.9	936.2	871.9	868.9	934.8
Plums (CA)	152.0	160.0	131.0	152.0	160.0	131.0
Prunes (CA)	240.8	368.0	469.0	234.9	368.0	469.0
Prunes & Plums ⁷	12.1	15.5	18.8	10.9	15.5	17.9
Strawberries ²				1,222.7	1,265.9	1,400.7
Total				17,047.5	17,649.5	17,583.1
	<i>1,000 Tons In-Shell Equivalent</i>	<i>1,000 Tons In-Shell Equivalent</i>	<i>1,000 Tons In-Shell Equivalent</i>	<i>1,000 Tons In-Shell Equivalent</i>	<i>1,000 Tons In-Shell Equivalent</i>	<i>1,000 Tons In-Shell Equivalent</i>
Tree Nuts ²						
Almonds (CA)				1,212.9	1,410.0	1,162.2
Hazelnuts (OR)				37.0	32.0	47.0
Macadamias (HI)				20.5	25.0	23.0
Pecans				193.7	97.0	145.3
Pistachios (CA)				208.0	139.0	193.0
Walnuts (CA)				328.0	436.0	415.0
Total				2,000.1	2,139.0	1,985.5

¹ Estimates for 2009 will be published on July 7, 2010.

² Only utilized production estimated.

³ Cultivated.

⁴ Production less than 0.1 thousand tons in 2007 and 2008.

⁵ Estimates discontinued in 2009.

⁶ Estimates for 2009 will be published on May 11, 2010.

⁷ ID, MI, OR, and WA.

**Noncitrus Fruits and Nuts: Price and Value
by Crop, United States, 2007-2009**

Crop	Unit ¹	Price			Value of Utilized Production		
		2007	2008	2009	2007	2008	2009
		<i>Dollars</i>	<i>Dollars</i>	<i>Dollars</i>	<i>1,000 Dollars</i>	<i>1,000 Dollars</i>	<i>1,000 Dollars</i>
Noncitrus Fruits							
Apples	Lb	0.288	0.232	0.228	2,608,220	2,205,974	2,222,759
Apricots	Ton	477.00	532.00	645.00	42,227	41,196	44,078
Avocados ²	Ton	1,770.00	1,850.00		341,239	214,546	
Bananas (HI)	Lb	0.410	0.460	0.550	10,496	8,004	8,470
Blackberries (OR) ³	Lb	0.486	0.616	0.566	28,597	27,773	28,434
Blueberries	Lb						
Cultivated	Lb	1.850	1.540	1.390	531,075	536,992	501,519
Wild (ME)	Lb	1.070	0.610	0.362	83,031	54,850	32,025
Boysenberries	Lb	0.602	0.729	0.657	3,051	2,334	2,102
Loganberries (OR) ⁴	Lb	0.978	1.050		88	63	
Raspberries	Lb						
Black (OR)	Lb	0.982	1.860	0.377	3,583	5,815	1,181
Red	Lb	0.538	1.670	0.902	32,320	100,177	64,110
All (CA)	Lb	2.880	3.000	2.900	226,800	163,200	167,620
Cherries, Sweet	Ton	1,820.00	2,390.00	1,340.00	557,056	575,314	504,879
Cherries, Tart	Lb	0.273	0.377	0.200	67,923	80,344	64,207
Cranberries	Bbl	50.70	57.80	52.40	332,092	454,981	361,375
Dates (CA)	Ton	2,290.00	1,530.00	1,450.00	37,327	28,917	29,725
Figs (CA) ²	Ton	401.00	599.00		19,145	25,954	
Grapes	Ton	489.00	460.00	451.00	3,453,124	3,358,578	3,171,814
Guavas (HI) ²	Lb	0.157	0.158		675	553	
Kiwifruit (CA) ²	Ton	950.00	888.00		22,517	19,545	
Nectarines	Ton	340.00	367.00	624.00	96,305	110,915	133,835
Olives (CA)	Ton	654.00	697.00	942.00	86,694	46,587	40,335
Papayas (HI)	Lb	0.392	0.430	0.443	13,094	14,393	13,869
Peaches	Ton	450.00	490.00	549.00	502,087	545,854	595,103
Pears	Ton	416.00	456.00	375.00	363,092	396,081	350,615
Plums (CA)	Ton	665.00	356.00	514.00	101,077	56,960	67,334
Prunes (CA) ⁵	Ton	1,450.00	1,500.00	1,200.00	117,450	193,500	188,400
Prunes & Plums ⁶	Ton	454.00	382.00	343.00	4,956	5,918	6,147
Strawberries	Cwt	71.60	75.00	75.80	1,751,108	1,898,868	2,123,735
Total ⁷					11,436,449	11,214,900	10,986,252
Tree Nuts							
Almonds (CA)	Lb	1.750	1.450	1.300	2,401,875	2,343,200	1,780,350
(Shelled)	Lb	1.750	1.450	1.300	2,401,875	2,343,200	1,780,350
Hazelnuts (OR)	Ton	2,040.00	1,620.00	1,590.00	75,480	51,840	74,730
Macadamias (HI)	Lb	0.600	0.670	0.670	24,600	33,500	30,820
Pecans	Lb	1.120	1.340	1.370	433,644	260,397	397,979
Pistachios (CA)	Lb	1.410	2.050	2.040	586,560	569,900	787,440
Walnuts (CA) ²	Ton	2,290.00	1,280.00		751,120	558,080	
Total ⁷					4,273,279	3,816,917	3,602,519

¹ Ton refers to the 2,000 lb. short ton.

² Estimates for 2009 will be published on July 7, 2010.

³ Cultivated.

⁴ Estimates discontinued in 2009.

⁵ Price is for dried basis.

⁶ ID, MI, OR, and WA.

⁷ Includes estimated 2009 value of production for crops noted by footnote 2. Used 2008 price to compute the 2009 fig, kiwifruit, and walnut value. The 2008 values for avocados and guavas are carried forward.

**Fruits and Nuts: Bearing Acreage,
United States, 2007-2009**

Year	Citrus Fruits ¹	Major Deciduous Fruits ²	Miscellaneous Noncitrus ³	Nuts ⁴	Total
	<i>Acres</i>	<i>Acres</i>	<i>Acres</i>	<i>Acres</i>	<i>Acres</i>
2007	866,200	1,729,650	292,080	1,016,600	3,904,530
2008	851,200	1,728,010	305,720	1,064,400	3,949,330
2009 ⁵	845,100	1,723,130	235,175	1,102,400	3,905,805

¹ Grapefruit, lemons, oranges, tangelos, tangerines, and Temples.

² Commercial apples, apricots, cherries, grapes, nectarines, peaches, pears, plums, and prunes.

³ Avocados, bananas, berries, cranberries, dates, figs, guavas, kiwifruit, olives, papayas, pineapples, and strawberries.

⁴ Almonds, hazelnuts, macadamia nuts, pistachios, and walnuts.

⁵ Preliminary. Avocados, guavas, and pineapples not included.

**Noncitrus Fruits: Production Utilization,
United States, 2007-2009 ¹**

Year	Utilized Production	Fresh	Processed ²					Other
			Canned	Dried	Juice	Frozen	Wine	
	<i>1,000 Tons</i>	<i>1,000 Tons</i>	<i>1,000 Tons</i>	<i>1,000 Tons</i>	<i>1,000 Tons</i>	<i>1,000 Tons</i>	<i>1,000 Tons</i>	<i>1,000 Tons</i>
2007	17,047.5	7,012.9	1,453.0	2,030.3	1,276.9	748.1	3,920.8	277.8
2008 ³	17,649.5	7,246.2	1,392.9	2,412.7	1,255.5	709.3	3,943.6	296.0
2009 ³	17,583.1							

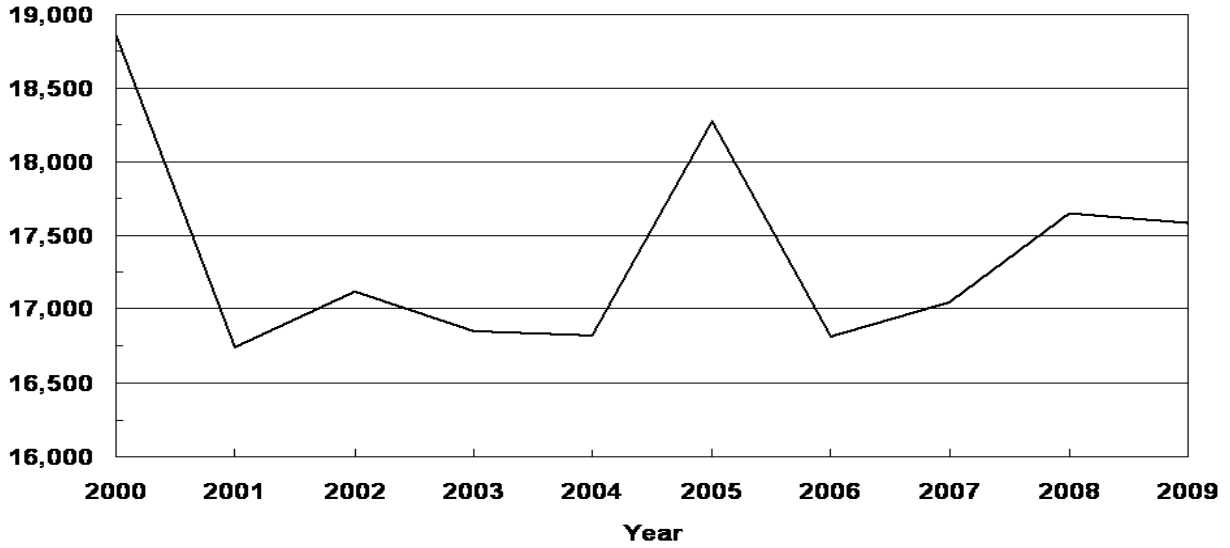
¹ 2009 is preliminary. Avocados and guavas not included. Fresh and processed tons will be published on July 7, 2010. Cranberry quantity included in utilized production, excluded from fresh and processed breakdown.

² Processed strawberries are included in frozen.

³ Pineapples not included.

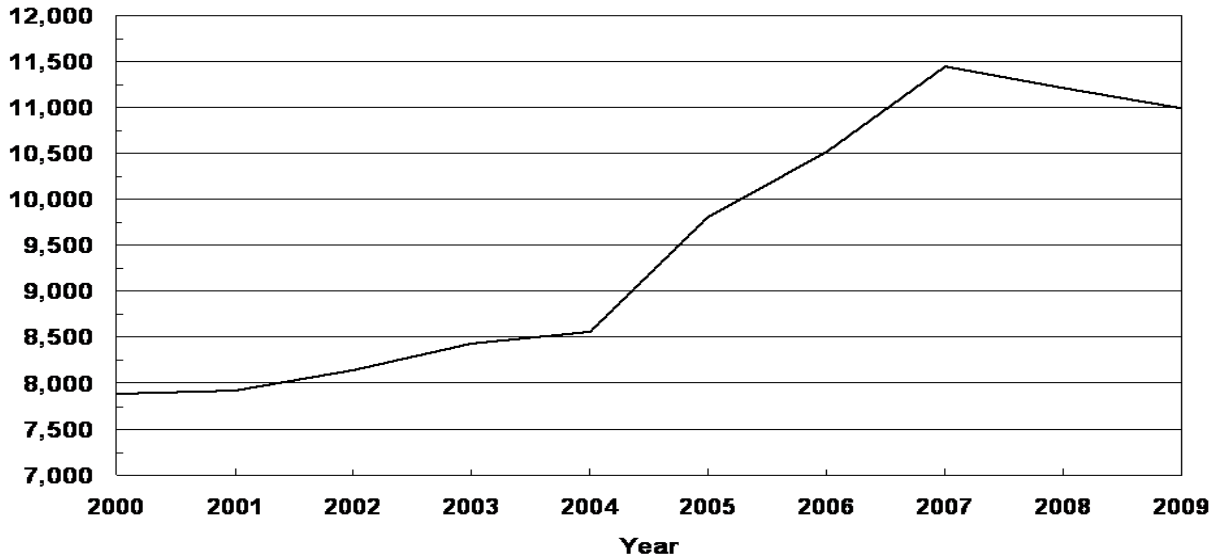
U.S. Noncitrus Fruits Utilized Production 2000-2009

(000) Tons Fresh
Equivalent



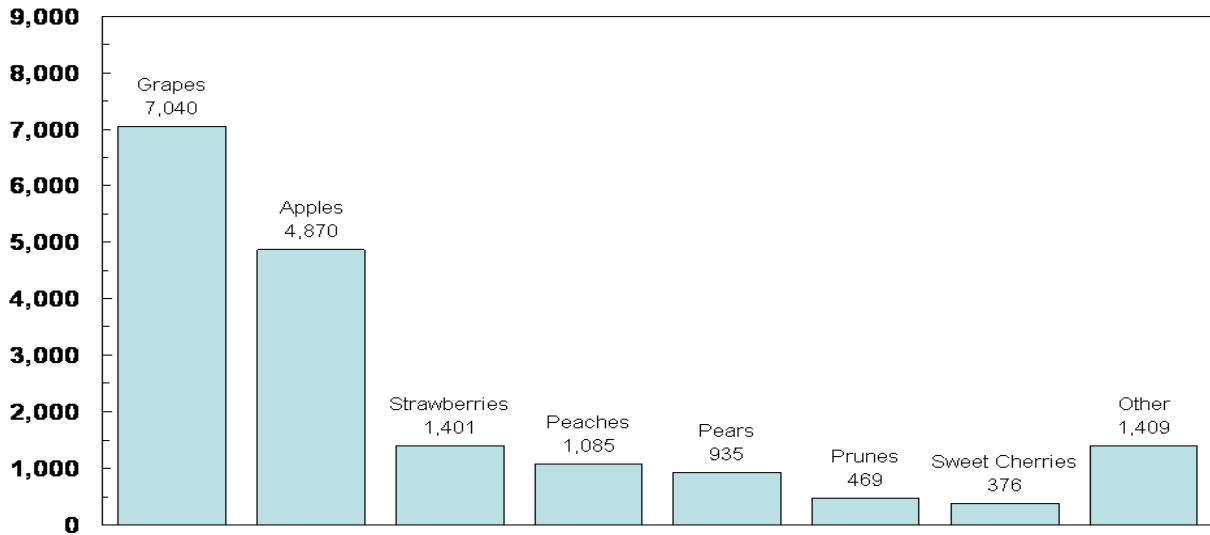
U.S. Noncitrus Fruits Value of Utilized Production 2000-2009

Million Dollars



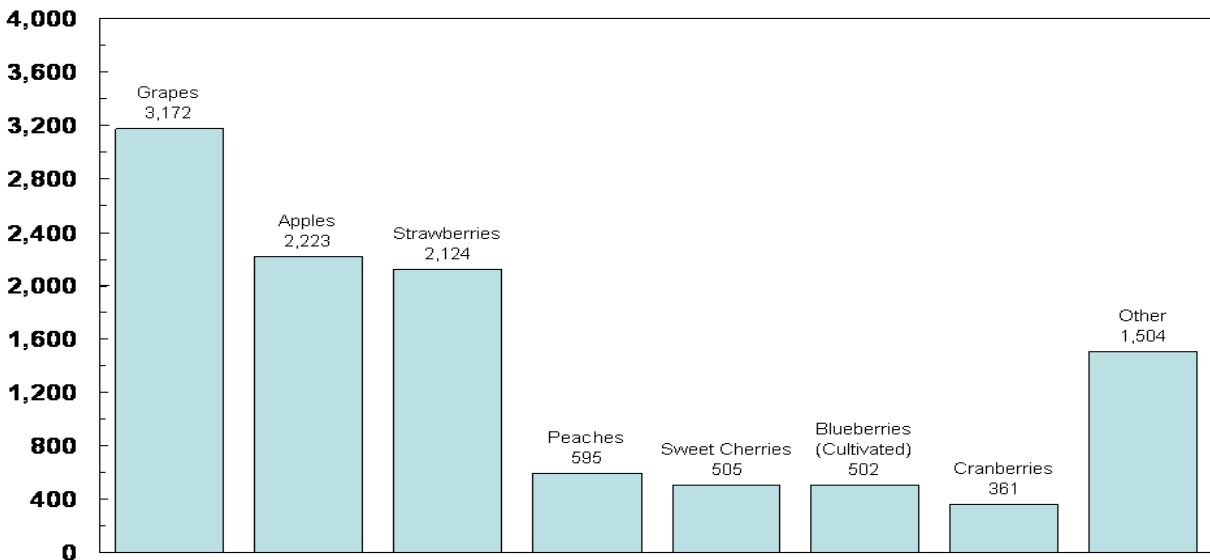
U.S. Noncitrus Fruits Utilized Production by Major Fruit, 2009

(000) Tons Fresh
Equivalent



U.S. Noncitrus Fruits Value of Utilized Production by Major Fruit, 2009

Milion Dollars



**Apples, Commercial: Bearing Acreage and Yield
by State and United States, 2007-2009**

State	Bearing Acreage			Yield per Acre ¹		
	2007	2008	2009	2007	2008	2009
	<i>Acres</i>	<i>Acres</i>	<i>Acres</i>	<i>Pounds</i>	<i>Pounds</i>	<i>Pounds</i>
AZ	1,200	1,200	1,200	19,200	15,000	4,580
CA	20,500	19,500	19,000	16,800	18,500	15,300
CO	1,600	1,400	1,400	8,130	12,900	11,400
CT	2,200	2,200	2,200	10,500	8,860	8,860
GA ²	600	600		3,330	20,000	
ID	2,800	2,600	2,600	12,500	32,700	19,200
IL	2,500	2,500	2,500	2,400	18,500	18,400
IN	2,100	2,100	2,000	9,520	11,000	15,000
IA	1,100	1,100	1,100	2,450	4,270	4,450
KY ²	790	790		759	9,750	
ME	3,100	3,100	3,100	12,900	12,400	11,100
MD	2,100	1,900	1,900	13,800	17,600	17,900
MA	4,000	4,000	4,000	9,630	10,300	10,500
MI	36,000	37,000	38,500	21,400	15,900	31,200
MN	3,000	3,000	3,000	8,670	9,030	7,730
MO	2,000	1,900	1,800	750	15,900	10,300
NH	2,100	2,100	1,900	16,400	17,400	15,500
NJ	2,000	2,000	2,000	21,000	21,500	22,500
NY	42,000	42,000	42,000	31,200	29,800	31,400
NC	6,800	6,800	6,800	8,820	24,300	17,600
OH	6,000	7,000	6,800	9,270	14,900	16,300
OR	4,800	4,200	4,200	28,100	28,300	31,000
PA	20,800	21,000	21,000	22,600	21,000	23,100
RI	300	300	300	8,670	8,000	8,000
SC ²	500	500		600	14,000	
TN	1,000	900	800	100	11,100	10,000
UT	1,400	1,400	1,400	13,600	8,570	12,900
VT	2,800	2,800	2,800	13,600	15,700	15,000
VA	12,000	12,000	12,000	17,900	19,200	16,700
WA	153,000	153,000	153,000	34,000	36,900	35,900
WV	5,000	5,000	4,900	16,000	17,000	17,300
WI	4,800	4,700	4,200	10,800	12,100	10,400
US	350,890	350,590	348,400	25,900	27,400	28,600

¹ Yield is based on total production, which includes unharvested production and fruit harvested but not sold due to market conditions.

² Estimates discontinued in 2009.

**Apples, Commercial: Total and Utilized Production
by State and United States, 2007-2009**

State	Total Production			Utilized Production		
	2007	2008	2009	2007	2008	2009
	<i>Million Pounds</i>	<i>Million Pounds</i>	<i>Million Pounds</i>	<i>Million Pounds</i>	<i>Million Pounds</i>	<i>Million Pounds</i>
AZ	23.0	18.0	5.5	23.0	18.0	5.5
CA	345.0	360.0	290.0	345.0	360.0	290.0
CO	13.0	18.0	16.0	13.0	17.0	15.0
CT	23.0	19.5	19.5	22.0	19.0	18.0
GA ¹	2.0	12.0		2.0	12.0	
ID	35.0	85.0	50.0	35.0	85.0	50.0
IL	6.0	46.2	46.0	4.9	39.6	39.6
IN	20.0	23.0	30.0	18.0	21.5	28.0
IA	2.7	4.7	4.9	1.7	3.6	4.0
KY ¹	0.6	7.7		0.4	6.9	
ME	40.0	38.5	34.5	36.0	35.0	32.0
MD	29.0	33.5	34.0	29.0	33.0	34.0
MA	38.5	41.0	42.0	36.5	38.5	40.0
MI	770.0	590.0	1,200.0	770.0	590.0	1,100.0
MN	26.0	27.1	23.2	20.1	24.3	20.3
MO	1.5	30.2	18.5	1.4	30.0	18.0
NH	34.5	36.5	29.5	33.0	35.0	28.0
NJ	42.0	43.0	45.0	42.0	39.0	44.0
NY	1,310.0	1,250.0	1,320.0	1,300.0	1,220.0	1,290.0
NC	60.0	165.0	120.0	60.0	165.0	105.0
OH	55.6	104.0	111.1	55.6	88.9	105.6
OR	135.0	119.0	130.0	135.0	119.0	130.0
PA	470.0	440.0	485.0	467.0	430.0	459.0
RI	2.6	2.4	2.4	2.4	2.3	2.3
SC ¹	0.3	7.0		0.3	6.3	
TN	0.1	10.0	8.0	0.1	8.7	7.8
UT	19.0	12.0	18.0	18.0	11.6	14.5
VT	38.0	44.0	42.0	33.0	41.0	38.0
VA	215.0	230.0	200.0	215.0	230.0	200.0
WA	5,200.0	5,650.0	5,500.0	5,200.0	5,650.0	5,500.0
WV	80.0	85.0	85.0	77.0	81.0	84.0
WI	52.0	57.0	43.5	49.0	54.5	36.5
US	9,089.4	9,609.3	9,953.6	9,045.4	9,515.7	9,739.1

¹ Estimates discontinued in 2009.

**Apples, Commercial: Price and Value
by State and United States, 2007-2009**

State	Price per Pound			Value of Utilized Production		
	2007	2008	2009	2007	2008	2009
	<i>Dollars</i>	<i>Dollars</i>	<i>Dollars</i>	<i>1,000 Dollars</i>	<i>1,000 Dollars</i>	<i>1,000 Dollars</i>
AZ	0.219	0.223	0.237	5,040	4,021	1,305
CA	0.263	0.305	0.293	90,769	109,708	85,025
CO	0.215	0.234	0.343	2,790	3,970	5,150
CT	0.489	0.507	0.556	10,766	9,631	10,008
GA ¹	0.500	0.373		1,000	4,470	
ID	0.252	0.220	0.235	8,820	18,663	11,750
IL	0.688	0.464	0.477	3,373	18,384	18,881
IN	0.280	0.378	0.322	5,045	8,133	9,018
IA	0.642	0.545	0.597	1,092	1,961	2,387
KY ¹	0.518	0.540		207	3,727	
ME	0.409	0.389	0.491	14,739	13,632	15,698
MD	0.196	0.239	0.224	5,697	7,896	7,599
MA	0.437	0.515	0.536	15,960	19,815	21,455
MI	0.169	0.200	0.113	130,325	118,063	124,600
MN	0.637	0.734	0.591	12,807	17,827	11,988
MO	0.213	0.253	0.266	298	7,600	4,789
NH	0.356	0.466	0.477	11,750	16,298	13,350
NJ	0.229	0.381	0.406	9,609	14,841	17,857
NY	0.222	0.207	0.173	288,260	252,970	223,630
NC	0.098	0.152	0.152	5,864	25,026	15,956
OH	0.435	0.423	0.366	24,159	37,575	38,602
OR	0.281	0.234	0.262	37,943	27,839	34,065
PA	0.142	0.180	0.172	66,489	77,364	78,856
RI	0.561	0.673	0.716	1,346	1,549	1,646
SC ¹	0.473	0.178		142	1,119	
TN	0.400	0.344	0.327	40	2,991	2,550
UT	0.329	0.286	0.233	5,916	3,315	3,384
VT	0.332	0.356	0.373	10,961	14,578	14,168
VA	0.121	0.164	0.160	26,122	37,712	31,950
WA	0.342	0.228	0.253	1,780,420	1,287,951	1,389,575
WV	0.098	0.115	0.149	7,557	9,277	12,528
WI	0.468	0.515	0.411	22,914	28,068	14,989
US	0.288	0.232	0.228	2,608,220	2,205,974	2,222,759

¹ Estimates discontinued in 2009.

**Apples, Commercial: Fresh Market Utilization and Price
by State and United States, 2007-2009 ¹**

State	Fresh Market					
	Quantity			Price per Pound ²		
	2007	2008	2009	2007	2008	2009
	<i>Million Pounds</i>	<i>Million Pounds</i>	<i>Million Pounds</i>	<i>Dollars</i>	<i>Dollars</i>	<i>Dollars</i>
AZ	4.0	2.0		0.560	0.750	
CA	155.0	160.0		0.431	0.522	
CO	6.0	10.0		0.360	0.320	
CT	19.5	16.0		0.535	0.580	
ID	20.0	50.0		0.375	0.340	
IN	10.0	15.0		0.450	0.500	
ME	28.5	26.5		0.490	0.480	
MD ⁴	15.0			0.307		
MA	30.5	30.0		0.510	0.630	
MI	265.0	165.0		0.290	0.355	
MO	0.7	20.0		0.328	0.335	
NH	21.0	22.5		0.520	0.670	
NJ	26.0	25.0		0.327	0.520	
NY	690.0	520.0		0.341	0.312	
NC	4.8	49.5		0.340	0.259	
OH	48.7	79.0		0.483	0.465	
OR	90.0	79.0		0.387	0.321	
PA	137.0	160.0		0.294	0.277	
SC ³	0.2	2.2		0.650	0.350	
UT	15.6	9.9		0.370	0.320	
VT	21.0	35.0		0.470	0.400	
VA	37.0	51.0		0.290	0.331	
WA	4,350.0	4,550.0		0.390	0.271	
WV	14.0	16.0		0.187	0.257	
WI	41.0	47.5		0.540	0.576	
Oth Sts	26.8	102.8		0.719	0.543	
US	6,077.3	6,243.9		0.383	0.302	

¹ Estimates for 2009 will be published on July 7, 2010.

² Equivalent packinghouse door returns for CA, MI, NY, and WA; price at first sale for all Other States.

³ Estimates discontinued in 2009.

⁴ Missing data not published to avoid disclosure of individual operations.

**Apples, Commercial: Value of Fresh Market Production
by State and United States, 2007-2009 ¹**

State	Fresh Market		
	Value of Production		
	2007	2008	2009
	<i>1,000 Dollars</i>	<i>1,000 Dollars</i>	<i>1,000 Dollars</i>
AZ	2,240	1,500	
CA	66,805	83,520	
CO	2,160	3,200	
CT	10,433	9,280	
ID	7,500	17,000	
IN	4,500	7,500	
ME	13,965	12,720	
MD	4,605		
MA	15,555	18,900	
MI	76,850	58,575	
MO	230	6,700	
NH	10,920	15,075	
NJ	8,502	13,000	
NY	235,290	162,240	
NC	1,632	12,821	
OH	23,522	36,735	
OR	34,830	25,359	
PA	40,278	44,320	
SC ²	130	770	
UT	5,772	3,168	
VT	9,870	14,000	
VA	10,730	16,881	
WA	1,696,500	1,233,050	
WV	2,618	4,112	
WI	22,140	27,360	
Oth Sts	19,273	55,806	
US	2,326,850	1,883,592	

¹ Estimates for 2009 will be published on July 7, 2010.

² Estimates discontinued in 2009.

**Apples, Commercial: Processed Utilization and Price
by State and United States, 2007-2009 ¹**

State	Processed					
	Quantity			Price per Ton		
	2007	2008	2009	2007	2008	2009
	<i>Million Pounds</i>	<i>Million Pounds</i>	<i>Million Pounds</i>	<i>Dollars</i>	<i>Dollars</i>	<i>Dollars</i>
AZ	19.0	16.0		295.00	315.00	
CA	190.0	200.0		252.00	262.00	
CO	7.0	7.0		180.00	220.00	
CT	2.5	3.0		266.00	234.00	
ID	15.0	35.0		176.00	95.00	
IN	8.0	6.5		136.00	195.00	
ME	7.5	8.5		206.00	215.00	
MD	14.0			156.00		
MA	6.0	8.5		135.00	215.00	
MI	505.0	425.0		212.00	280.00	
MO	0.7	10.0		194.00	180.00	
NH	12.0	12.5		138.00	196.00	
NJ	16.0	14.0		138.00	263.00	
NY	610.0	700.0		174.00	259.00	
NC	55.2	115.5		153.00	211.00	
OH	6.9	9.9		185.00	170.00	
OR	45.0	40.0		138.00	124.00	
PA	330.0	270.0		159.00	245.00	
SC ²	0.1	4.1		240.00	170.00	
UT	2.4	1.7		120.00	173.00	
VT	12.0	6.0		182.00	193.00	
VA	178.0	179.0		173.00	233.00	
WA	850.0	1,100.0		197.00	99.80	
WV	63.0	65.0		157.00	159.00	
WI	8.0	7.0		194.00	202.00	
Oth Sts	4.8	27.6		247.00	217.00	
US	2,968.1	3,271.8		190.00	197.00	

¹ Estimates for 2009 will be published on July 7, 2010.

² Estimates discontinued in 2009.

**Apples, Commercial: Value of Processed Production
by State and United States, 2007-2009 ¹**

State	Processed		
	Value of Production		
	2007	2008	2009
	<i>1,000 Dollars</i>	<i>1,000 Dollars</i>	<i>1,000 Dollars</i>
AZ	2,800	2,521	
CA	23,964	26,188	
CO	630	770	
CT	333	351	
ID	1,320	1,663	
IN	545	633	
ME	774	912	
MD	1,092		
MA	405	915	
MI	53,475	59,488	
MO	68	900	
NH	830	1,223	
NJ	1,107	1,841	
NY	52,970	90,730	
NC	4,232	12,205	
OH	637	840	
OR	3,113	2,480	
PA	26,211	33,044	
SC ²	12	349	
UT	144	147	
VT	1,091	578	
VA	15,392	20,831	
WA	83,920	54,901	
WV	4,939	5,165	
WI	774	708	
Oth Sts	592	2,999	
US	281,370	322,382	

¹ Estimates for 2009 will be published on July 7, 2010.

² Estimates discontinued in 2009.

**Apples, Commercial: Processed Utilization, Use, and Price
by State and United States, 2007-2009¹**

Use and State	Processed Utilization					
	Quantity			Price per Ton		
	2007	2008	2009	2007	2008	2009
	<i>Million Pounds</i>	<i>Million Pounds</i>	<i>Million Pounds</i>	<i>Dollars</i>	<i>Dollars</i>	<i>Dollars</i>
Canned						
MI	165.0	180.0		220.00	305.00	
NY	330.0	380.0		174.00	268.00	
NC	30.4	69.3		164.00	230.00	
PA	230.0	189.0		166.00	260.00	
VA	145.0	145.0		177.00	240.00	
WA	120.0	160.0		207.00	111.00	
WV	43.0	30.0		169.00	131.00	
Oth Sts	27.8	33.1		201.00	207.00	
US	1,091.2	1,186.4		184.00	240.00	
Juice & Cider						
CA ²						
MI	155.0	105.0		160.00	205.00	
NY	210.0	220.0		145.00	192.00	
NC	19.7	37.0		137.00	180.00	
OR	25.0	20.0		100.00	63.00	
PA	90.0	46.0		140.00	200.00	
VA	29.0	28.0		157.00	208.00	
WA	450.0	620.0		192.00	61.10	
WV	16.0	30.0		127.00	182.00	
Oth Sts	262.6	297.6		223.00	230.00	
US	1,257.3	1,403.6		179.00	141.00	

See footnote(s) at end of table.

--continued

**Apples, Commercial: Processed Utilization, Use, and Price
by State and United States, 2007-2009¹ (continued)**

Use and State	Processed Utilization					
	Quantity			Price per Ton		
	2007	2008	2009	2007	2008	2009
	<i>Million Pounds</i>	<i>Million Pounds</i>	<i>Million Pounds</i>	<i>Dollars</i>	<i>Dollars</i>	<i>Dollars</i>
Frozen NY ²	50.0			282.00		
Oth Sts	207.7	216.2		228.00	252.00	
US	257.7	216.2		238.00	252.00	
Dried US	203.7	212.7		182.00	75.60	
Fresh Slices US	98.3	127.8		286.00	486.00	
Other ³ NY	10.0	10.0		113.00	234.00	
Oth Sts	49.9	109.1		193.00	238.00	
US	59.9	125.1		189.00	226.00	

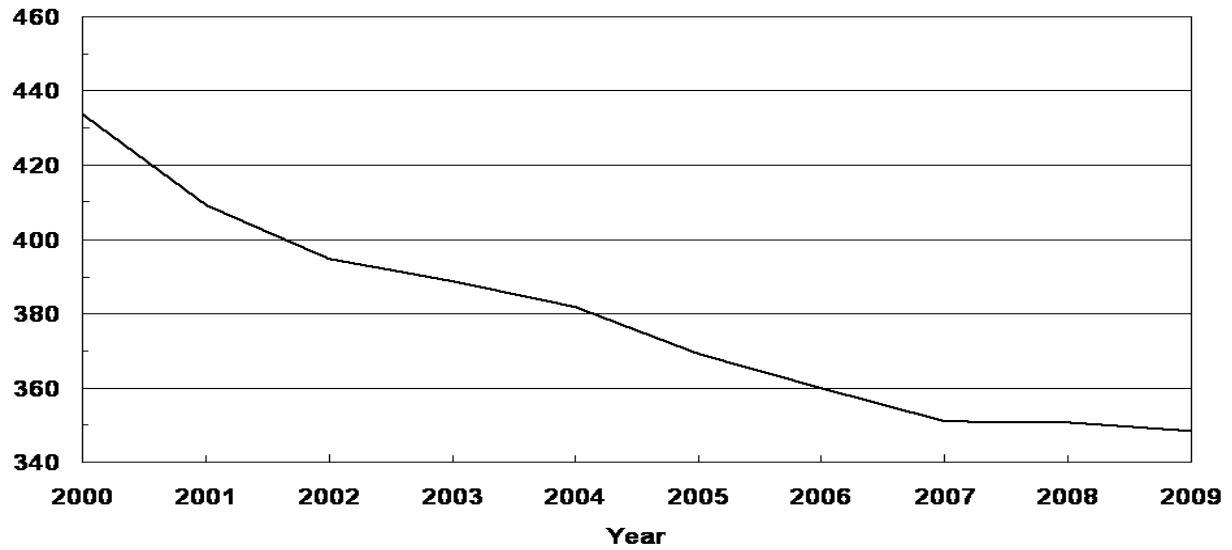
¹ Estimates for 2009 will be published on July 7, 2010.

² 2008 data included in Other States to avoid disclosure of individual operations.

³ Includes vinegar, wine, and slices for pie making.

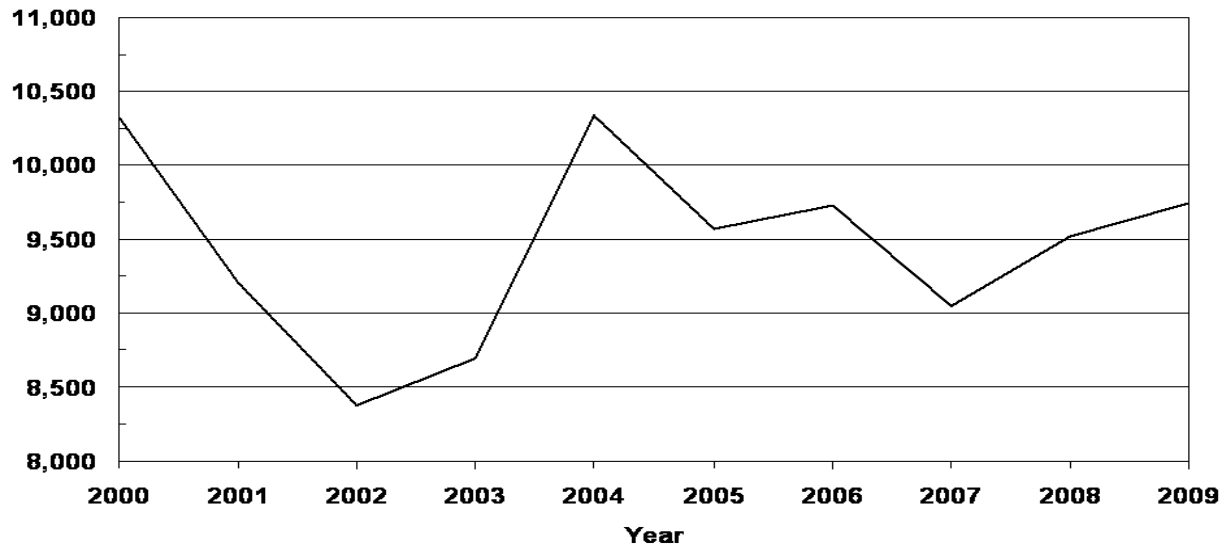
U.S. Apples Bearing Acres 2000-2009

(000) Acres



U.S. Apples Utilized Production 2000-2009

Million Pounds



**Miscellaneous Fruits: Bearing Acreage, Yield, Production, and Utilization
by State and United States, 2007-2009**

Crop, State, and Season	Bearing Acreage	Yield Per Acre ¹	Production		Utilization	
			Total	Utilized	Fresh	Processed
	<i>Acres</i>	<i>Tons</i>	<i>Tons</i>	<i>Tons</i>	<i>Tons</i>	<i>Tons</i>
Apricots ²						
CA						
2007	11,300	7.17	81,000	81,000	23,000	58,000
2008	11,100	6.94	77,000	72,900	22,000	50,900
2009	11,000	5.41	59,500	59,500	17,500	42,000
UT						
2007			260	260		
2008			410	380		
2009			320	290		
WA						
2007			7,200	7,200		
2008			4,200	4,200		
2009			8,500	8,500		
US						
2007	12,650	6.99	88,460	88,460	29,270	59,190
2008	12,450	6.56	81,610	77,480	25,760	51,720
2009	12,350	5.53	68,320	68,290	25,170	43,120
Avocados ³						
CA						
2007-08	66,000	2.50	165,000	165,000	165,000	
2008-09	65,000	1.35	88,000	88,000	88,000	
2009-10						
FL						
2007-08	7,000	3.93	27,500	27,500	27,500	
2008-09	7,500	3.66	27,450	27,450	27,450	
2009-10						
HI						
2007-08	350	1.66	580	580	580	
2008-09	330	1.52	500	500	500	
2009-10						
US						
2007-08	73,350	2.63	193,080	193,080	193,080	
2008-09	72,830	1.59	115,950	115,950	115,950	
2009-10						
Dates						
CA						
2007	5,300	3.08	16,300	16,300	16,300	
2008	5,100	3.71	18,900	18,900	18,900	
2009	5,400	3.80	20,500	20,500	20,500	

¹ Yield is based on total production.

² Missing data not published to avoid disclosure of individual operations.

³ Estimates for 2009-10 will be published on July 7, 2010.

**Miscellaneous Fruits: Price and Value by State
and United States, 2007-2009**

Crop, State, and Season	Price per Ton			Value of Production		
	Fresh	Processed	All	Fresh	Processed	Total
	<i>Dollars</i>	<i>Dollars</i>	<i>Dollars</i>	<i>1,000 Dollars</i>	<i>1,000 Dollars</i>	<i>1,000 Dollars</i>
Apricots ^{1 2}						
CA						
2007	742.00	330.00	431.00	17,066	17,812	34,878
2008	775.00	353.00	472.00	17,050	17,354	34,404
2009	1,390.00	373.00	672.00	24,325	15,646	39,971
UT						
2007			815.00			212
2008			468.00			178
2009			862.00			250
WA						
2007			991.00			7,137
2008			1,570.00			6,614
2009			888.00			7,551
US						
2007	829.00	325.00	477.00	24,261	17,966	42,227
2008	918.00	350.00	532.00	23,653	17,543	41,196
2009	1,270.00	375.00	700.00	32,042	15,730	47,772
Avocados ³						
CA						
2007-08	1,990.00		1,990.00	328,350		328,350
2008-09	2,280.00		2,280.00	200,640		200,640
2009-10						
FL						
2007-08	440.00		440.00	12,100		12,100
2008-09	480.00		480.00	13,176		13,176
2009-10						
HI						
2007-08	1,360.00		1,360.00	789		789
2008-09	1,460.00		1,460.00	730		730
2009-10						
US						
2007-08	1,770.00		1,770.00	341,239		341,239
2008-09	1,850.00		1,850.00	214,546		214,546
2009-10						
Dates						
CA						
2007	2,290.00		2,290.00	37,327		37,327
2008	1,530.00		1,530.00	28,917		28,917
2009	1,450.00		1,450.00	29,725		29,725

¹ Missing data not published to avoid disclosure of individual operations.

² Apricot processed price excludes dried. Processing value includes dried.

³ Estimates for 2009-10 will be published on July 7, 2010.

**Miscellaneous Fruits: Bearing Acreage, Yield, Production, and Utilization
by State and United States, 2007-2009 ¹**

Crop, State, and Season	Bearing Acreage	Yield Per Acre ²	Production		Utilization	
			Total	Utilized	Fresh	Processed
	<i>Acres</i>	<i>Tons</i>	<i>Tons</i>	<i>Tons</i>	<i>Tons</i>	<i>Tons</i>
Figs ³						
CA						
2007	9,100	5.25	47,800	47,800	4,300	43,500
2008	9,400	4.61	43,300	43,300	4,000	39,300
2009	9,300	4.60	42,800	42,800	3,850	38,950
Kiwifruit						
CA						
2007	4,200	5.83	24,500	23,700	21,700	2,000
2008	4,200	5.48	23,000	22,000	20,100	1,900
2009	4,200	6.07	25,500	24,600	22,600	2,000
Nectarines ⁴						
CA						
2007	31,000	8.68	269,000	269,000	269,000	
2008	31,000	9.52	295,000	295,000	295,000	
2009	29,000	7.10	206,000	206,000	206,000	
WA						
2007	1,400	10.00	14,000	14,000	14,000	
2008	1,300	5.77	7,500	7,500	7,500	
2009	1,300	6.54	8,500	8,500	8,500	
US						
2007	32,400	8.73	283,000	283,000	283,000	
2008	32,300	9.37	302,500	302,500	302,500	
2009	30,300	7.08	214,500	214,500	214,500	
Olives						
CA						
2007	30,000	4.42	132,500	132,500	500	132,000
2008	30,000	2.23	66,800	66,800		66,800
2009	31,000	1.38	42,800	42,800		42,800
Plums						
CA						
2007	29,500	5.15	152,000	152,000		
2008	29,500	5.42	160,000	160,000		
2009	26,600	4.92	131,000	131,000		

¹ Missing data not published to avoid disclosure of individual operations.

² Yield is based on total production.

³ Small quantities of canned figs are included in fresh to avoid disclosure of individual operations.

⁴ Small quantities of processed nectarines are included in fresh to avoid disclosure of individual operations.

**Miscellaneous Fruits: Price and Value by State
and United States, 2007-2009¹**

Crop, State, and Season	Price per Ton			Value of Production		
	Fresh	Processed	All	Fresh	Processed	Total
	<i>Dollars</i>	<i>Dollars</i>	<i>Dollars</i>	<i>1,000 Dollars</i>	<i>1,000 Dollars</i>	<i>1,000 Dollars</i>
Figs						
CA						
2007			401.00			19,145
2008			599.00			25,954
2009 ²						
Kiwifruit						
CA						
2007			950.00			22,517
2008			888.00			19,545
2009 ²						
Nectarines ³						
CA						
2007	331.00		331.00	89,039		89,039
2008	365.00		365.00	107,675		107,675
2009	630.00		630.00	129,780		129,780
WA						
2007	519.00		519.00	7,266		7,266
2008	432.00		432.00	3,240		3,240
2009	477.00		477.00	4,055		4,055
US						
2007	340.00		340.00	96,305		96,305
2008	367.00		367.00	110,915		110,915
2009	624.00		624.00	133,835		133,835
Olives						
CA						
2007	500.00	655.00	654.00	250	86,444	86,694
2008		697.00	697.00		46,587	46,587
2009		942.00	942.00		40,335	40,335
Plums						
CA						
2007			665.00			101,077
2008			356.00			56,960
2009			514.00			67,334

¹ Missing data not published to avoid disclosure of individual operations.

² Estimates for 2009 will be published on July 7, 2010.

³ Small quantities of processed nectarines are included in fresh to avoid disclosure of individual operations.

**Miscellaneous Fruits: Bearing Acreage, Yield, Production, and Utilization
by State and 4-State Total, 2007-2009**¹

Crop, State, and Year	Bearing Acreage	Yield Per Acre ²	Production		Utilization	
			Total	Utilized	Fresh	Processed
	<i>Acres</i>	<i>Tons</i>	<i>Tons</i>	<i>Tons</i>	<i>Tons</i>	<i>Tons</i>
Prunes & Plums						
ID						
2007	490	3.67	1,800	1,720		
2008	490	4.48	2,200	2,180		
2009	490	4.08	2,000	2,000		
MI						
2007	750	4.13	3,100	2,000	900	1,100
2008	650	3.54	2,300	2,300	700	1,600
2009	600	4.83	2,900	2,000	1,400	600
OR						
2007	1,500	2.00	3,000	3,000	1,800	1,200
2008	1,500	5.00	7,500	7,500	3,500	4,000
2009	1,500	6.26	9,400	9,400	4,200	5,200
WA						
2007	600	7.00	4,200	4,200		
2008	600	5.83	3,500	3,500		
2009	600	7.50	4,500	4,500		
4-State Total						
2007	3,340	3.62	12,100	10,920	6,420	4,500
2008	3,240	4.78	15,500	15,480	8,700	6,780
2009	3,190	5.89	18,800	17,900	10,150	7,750
Prunes (Dried Basis)						
CA						
2007	64,000	1.30	83,000	81,000		81,000
2008	64,000	2.01	129,000	129,000		129,000
2009	64,000	2.45	157,000	157,000		157,000

¹ Missing data not published to avoid disclosure of individual operations.

² Yield is based on total production.

**Miscellaneous Fruits: Price and Value by State
and 4-State Total, 2007-2009¹**

Crop, State, and Year	Price per Ton			Value of Production		
	Fresh	Processed	All	Fresh	Processed	Total
	<i>Dollars</i>	<i>Dollars</i>	<i>Dollars</i>	<i>1,000 Dollars</i>	<i>1,000 Dollars</i>	<i>1,000 Dollars</i>
Prunes & Plums						
ID						
2007			709.00			1,219
2008			585.00			1,275
2009			496.00			991
MI						
2007	765.00	173.00	440.00	689	190	879
2008	775.00	174.00	357.00	543	278	821
2009	890.00	220.00	689.00	1,246	132	1,378
OR						
2007	501.00	302.00	421.00	902	362	1,264
2008	407.00	165.00	278.00	1,425	658	2,083
2009	322.00	133.00	218.00	1,352	694	2,046
WA						
2007			380.00			1,594
2008			497.00			1,739
2009			385.00			1,732
4-State Total						
2007	622.00	213.00	454.00	3,996	960	4,956
2008	547.00	171.00	382.00	4,758	1,160	5,918
2009	489.00	152.00	343.00	4,967	1,180	6,147
Prunes (Dried Basis)						
CA						
2007		1,450.00	1,450.00		117,450	117,450
2008		1,500.00	1,500.00		193,500	193,500
2009		1,200.00	1,200.00		188,400	188,400

¹ Missing data not published to avoid disclosure of individual operations.

**Miscellaneous Fruits: Processed Utilization, Use, and Price
by State and United States, 2007-2009**

Crop, Use, and State	Processed Utilization					
	Quantity			Price per Ton		
	2007	2008	2009	2007	2008	2009
	<i>Tons</i>	<i>Tons</i>	<i>Tons</i>	<i>Dollars</i>	<i>Dollars</i>	<i>Dollars</i>
Apricots						
Canned						
CA	24,000	22,000	23,100	362.00	389.00	390.00
Dried (Fresh Basis)						
CA	13,000	14,000	9,000	229.00	309.00	328.00
Figs ¹						
Dried (Fresh Basis)						
CA	43,500	39,300	38,950	291.00	401.00	
Olives						
Canned						
CA	96,000	45,500	23,000	700.00	767.00	1,120.00
Crushed for Oil						
CA	12,000	14,000	18,000	775.00	670.00	779.00
Limited						
CA	20,000	6,000	1,500	496.00	382.00	367.00
Undersized						
CA	4,000	1,300	300	6.00	12.00	8.00
Prunes & Plums						
Canned						
4-State Total	2,550	2,130	1,930	217.00	182.00	193.00
Frozen						
4-State Total	650	1,110	780	200.00	207.00	204.00
Dried & Other						
4-State Total	1,300	3,540	5,040	213.00	153.00	129.00

¹ Price estimates for 2009 will be published on July 7, 2010.

**Olives: Variety and Total Production, California
2007-2009**

Variety	Total Production		
	2007	2008	2009
	<i>Tons</i>	<i>Tons</i>	<i>Tons</i>
Manzanillo	112,000	54,000	24,400
Sevillano	14,000	9,500	6,000
All Other ¹	6,500	3,300	12,400
Total	132,500	66,800	42,800

¹ Includes production for varieties that were or will be used for canned, oil, and other specialty products.

California Dry Fruits: Production, Use, and Price, 2007-2009

Crop	Quantity			Price per Ton		
	2007	2008	2009	2007	2008	2009
	<i>Tons</i>	<i>Tons</i>	<i>Tons</i>	<i>Dollars</i>	<i>Dollars</i>	<i>Dollars</i>
Fresh Basis						
Apricots	13,000	14,000	9,000	229.00	309.00	328.00
Figs ¹	43,500	39,300	38,950	291.00	401.00	
Grapes						
Raisin	1,593,000	1,838,000	1,508,000	231.00	244.00	258.00
Table	28,000	35,000	44,000	236.00	250.00	270.00
Peaches						
Freestone	12,700	9,500	7,100	57.00	50.00	43.00
Prunes	234,900	368,000	469,000	500.00	526.00	402.00
Dried Basis						
Apricots ²	1,970	1,830	1,100	1,510.00	2,364.00	2,680.00
Figs ^{1 3}						
Standard	11,100	11,800	11,650	1,120.00	1,330.00	
Sub-Std.	3,400	1,300	1,290	60.00	60.00	
All Dried	14,500	13,100	12,940	873.00	1,200.00	
Grapes						
Raisin ^{4 5}	354,000	383,000	335,000	1,040.00	1,170.00	1,160.00
Table ⁶	6,000	7,300	9,800	1,100.00	1,200.00	1,210.00
Peaches ⁷						
Freestone	1,365	1,050	850	530.00	452.00	359.00
Prunes ⁸	81,000	129,000	157,000	1,450.00	1,500.00	1,200.00

¹ Price estimates for 2009 will be published on July 7, 2010.

² Dried basis 1 ton of apricots equivalent to 6.60 tons for 2007, 7.65 tons for 2008, and 8.18 tons for 2009.

³ Dried basis 1 ton of all figs equivalent to 3.00 tons for 2007, 2008, and 2009.

⁴ Includes substandard raisins diverted to other uses.

⁵ Dried basis 1 ton of raisins equivalent to 4.50 tons for 2007, 4.80 tons for 2008, and 4.50 tons for 2009.

⁶ Dried basis 1 ton of table type raisins equivalent to 4.67 tons for 2007, 4.79 tons for 2008, and 4.49 tons for 2009.

⁷ Dried basis 1 ton of Freestone peaches equivalent to 9.30 tons for 2007, 9.05 tons for 2008, and 8.35 tons for 2009.

⁸ Dried basis 1 ton of dried prunes equivalent to 2.90 tons for 2007, 2.85 tons for 2008, and 2.99 tons for 2009.

**Strawberries for Fresh Market and Processing: Area Planted and Harvested,
Yield, Production, Price, and Value by State and United States, 2007-2009**

State	Area Planted			Area Harvested		
	2007	2008	2009	2007	2008	2009
	<i>Acres</i>	<i>Acres</i>	<i>Acres</i>	<i>Acres</i>	<i>Acres</i>	<i>Acres</i>
CA	35,500	37,600	39,800	35,500	37,600	39,800
FL	6,600	6,900	8,800	6,600	6,900	8,800
MI	1,000	950	950	850	800	800
NY	1,600	1,600	1,600	1,400	1,400	1,400
NC	1,700	1,700	1,600	1,500	1,600	1,500
OH	1,100	1,100	1,100	780	770	710
OR	2,200	2,100	2,200	1,900	1,800	1,700
PA	1,200	1,200	1,100	1,200	1,200	1,100
WA	1,600	1,600	1,500	1,600	1,600	1,500
WI	900	910	870	850	800	770
US	53,400	55,660	59,520	52,180	54,470	58,080
	Yield per Acre			Production		
	2007	2008	2009	2007	2008	2009
	<i>Cwt</i>	<i>Cwt</i>	<i>Cwt</i>	<i>1,000 Cwt</i>	<i>1,000 Cwt</i>	<i>1,000 Cwt</i>
CA	605	605	625	21,540	22,675	24,856
FL	320	260	270	2,112	1,794	2,376
MI	51	61	58	43	49	46
NY	33	32	31	46	45	44
NC	125	130	130	189	208	195
OH	49	55	42	38	42	30
OR	130	130	125	247	238	211
PA	47	61	59	56	73	65
WA	84	90	95	134	144	143
WI	56	61	61	48	49	47
US	469	465	482	24,453	25,317	28,013
	Value					
	Per Cwt			Total		
	2007	2008	2009	2007	2008	2009
	<i>Dollars</i>	<i>Dollars</i>	<i>Dollars</i>	<i>1,000 Dollars</i>	<i>1,000 Dollars</i>	<i>1,000 Dollars</i>
CA	65.50	69.60	69.40	1,410,652	1,578,175	1,725,232
FL	124.00	139.00	132.00	261,888	249,366	313,632
MI	117.00	119.00	144.00	5,028	5,846	6,615
NY	165.00	165.00	205.00	7,590	7,425	9,020
NC	95.00	100.00	105.00	17,955	20,800	20,475
OH	154.00	174.00	191.00	5,852	7,308	5,730
OR	66.30	70.50	65.80	16,378	16,768	13,888
PA	187.00	211.00	208.00	10,472	15,403	13,520
WA	65.40	70.10	58.30	8,765	10,092	8,338
WI	136.00	145.00	155.00	6,528	7,105	7,285
US	71.60	75.80	75.80	1,751,108	1,918,288	2,123,735

**Strawberries for Fresh Market and Processing: Production, Price, and Value
by Utilization, State, and United States, 2007-2009**

Utilization and State	Production					
	2007		2008		2009	
	<i>1,000 Cwt</i>		<i>1,000 Cwt</i>		<i>1,000 Cwt</i>	
Fresh Market						
CA	17,159		18,605		20,040	
FL	2,112		1,794		2,376	
MI	41		47		43	
NY	46		45		44	
NC	189		208		195	
OH	38		42		30	
OR	27		26		29	
PA	56		73		65	
WA	17		22		11	
WI	48		49		47	
US	19,733		20,911		22,880	
Processing						
CA	4,381		4,070		4,816	
MI	2		2		3	
OR	220		212		182	
WA	117		122		132	
US	4,720		4,406		5,133	
	Value					
	Per Unit			Total		
	2007	2008	2009	2007	2008	2009
	<i>Dollars Per Cwt</i>	<i>Dollars Per Cwt</i>	<i>Dollars Per Cwt</i>	<i>1,000 Dollars</i>	<i>1,000 Dollars</i>	<i>1,000 Dollars</i>
Fresh Market						
CA	75.70	77.30	79.00	1,298,936	1,438,167	1,583,160
FL	124.00	139.00	132.00	261,888	249,366	313,632
MI	120.00	122.00	150.00	4,920	5,734	6,450
NY	165.00	165.00	205.00	7,590	7,425	9,020
NC	95.00	100.00	105.00	17,955	20,800	20,475
OH	154.00	174.00	191.00	5,852	7,308	5,730
OR	134.00	172.00	140.00	3,618	4,472	4,060
PA	187.00	211.00	208.00	10,472	15,403	13,520
WA	146.00	172.00	158.00	2,482	3,784	1,738
WI	136.00	145.00	155.00	6,528	7,105	7,285
US	82.10	84.10	85.90	1,620,241	1,759,564	1,965,070
Processing						
CA	25.50	34.40	29.50	111,716	140,008	142,072
MI	54.00	56.00	55.00	108	112	165
OR	58.00	58.00	54.00	12,760	12,296	9,828
WA	53.70	51.70	50.00	6,283	6,308	6,600
US	27.70	36.00	30.90	130,867	158,724	158,665

**Berries: Harvested Acreage, Yield, Production, and Utilization
by Crop, State, and United States, 2007-2009**

Crop, State, and Year	Area Harvested	Yield Per Acre ¹	Production		Utilization	
			Total	Utilized	Fresh	Processed
	<i>Acres</i>	<i>Pounds</i>	<i>1,000 Pounds</i>	<i>1,000 Pounds</i>	<i>1,000 Pounds</i>	<i>1,000 Pounds</i>
Cultivated Blueberries						
AL ²						
2007	270	1,520	460	410	410	
2008	320	1,130	400	360	360	
2009	310	968	400	300	300	
AR ²						
2007	270	259	70	70	70	
2008	300	2,670	800	800	800	
2009	300	1,670	500	500	500	
CA						
2007	2,300	7,170	16,500	16,500	14,500	2,000
2008 ²	2,500	5,600	14,000	14,000	14,000	
2009 ²	2,700	8,520	23,000	23,000	23,000	
FL ²						
2007	2,600	3,000	7,800	7,800	7,800	
2008	3,000	3,270	9,800	9,800	9,800	
2009	3,200	4,220	14,100	13,500	13,500	
GA						
2007	4,800	2,290	11,000	11,000	9,000	2,000
2008	9,500	4,320	41,000	41,000	24,000	17,000
2009	10,500	4,100	43,000	43,000	23,000	20,000
IN						
2007	580	2,410	1,600	1,400	800	600
2008	660	5,760	3,800	3,800	2,200	1,600
2009	660	5,610	3,700	3,700	2,700	1,000
MI						
2007	18,500	5,030	93,000	93,000	30,000	63,000
2008	18,600	5,910	110,000	110,000	40,000	70,000
2009	18,500	5,350	99,000	99,000	49,000	50,000
MS						
2007	2,200	4,320	9,500	9,500	5,000	4,500
2008	2,700	1,480	4,000	4,000	2,600	1,400
2009	2,700	2,410	6,500	6,500	5,400	1,100
NJ						
2007	7,600	7,110	54,000	54,000	41,000	13,000
2008	7,600	7,760	59,000	59,000	46,000	13,000
2009	7,700	6,880	53,000	53,000	45,000	8,000
NY						
2007	900	2,560	2,500	2,300	2,250	50
2008	900	2,560	2,500	2,300	2,200	100
2009	900	2,330	2,400	2,100	2,050	50
NC						
2007	4,700	3,450	16,200	16,200	11,000	5,200
2008	4,800	5,940	28,500	28,500	20,000	8,500
2009	5,500	5,950	34,000	32,700	25,500	7,200
OR						
2007	5,000	9,000	45,000	45,000	16,800	28,200
2008	5,200	8,290	43,100	43,100	19,600	23,500
2009	5,700	8,420	48,500	48,000	23,000	25,000
WA						
2007	3,700	8,000	29,600	29,600	11,200	18,400
2008	4,100	7,800	32,000	32,000	12,000	20,000
2009	4,500	8,000	36,000	36,000	9,500	26,500
US						
2007	53,420	5,370	287,230	286,780	149,830	136,950
2008	60,180	5,790	348,900	348,660	193,560	155,100
2009	63,170	5,720	364,100	361,300	222,450	138,850

¹ Yield is based on utilized production.

² Small quantities of processed blueberries are included in fresh to avoid disclosure of individual operations.

**Berries: Price and Value by Crop, State,
and United States, 2007-2009**

Crop, State and Year	Price per Pound			Value of Production		
	Fresh	Processed	All	Fresh	Processed	Total
	<i>Dollars</i>	<i>Dollars</i>	<i>Dollars</i>	<i>1,000 Dollars</i>	<i>1,000 Dollars</i>	<i>1,000 Dollars</i>
Cultivated Blueberries						
AL ¹						
2007	1.590		1.590	652		652
2008	1.330		1.330	479		479
2009	1.640		1.640	492		492
AR ¹						
2007	1.640		1.640	115		115
2008	1.610		1.610	1,288		1,288
2009	1.720		1.720	860		860
CA						
2007	1.950	0.970	1.830	28,275	1,940	30,215
2008 ¹	3.470		3.470	48,580		48,580
2009 ¹	2.930		2.930	67,390		67,390
FL ¹						
2007	5.000		5.000	39,000		39,000
2008	5.300		5.300	51,940		51,940
2009	5.400		5.400	72,900		72,900
GA						
2007	3.100	1.420	2.790	27,900	2,840	30,740
2008	2.230	0.980	1.710	53,520	16,660	70,180
2009	2.000	0.480	1.290	46,000	9,600	55,600
IN						
2007	2.200	1.550	1.920	1,760	930	2,690
2008	2.000	0.890	1.530	4,400	1,424	5,824
2009	1.920	0.400	1.510	5,184	400	5,584
MI						
2007	2.050	1.650	1.780	61,500	103,956	165,456
2008	1.700	0.800	1.130	68,000	56,000	124,000
2009	1.650	0.420	1.030	80,850	21,000	101,850
MS						
2007	2.100	1.500	1.820	10,500	6,750	17,250
2008	2.400	1.200	1.980	6,240	1,680	7,920
2009	1.800	0.700	1.610	9,720	770	10,490
NJ						
2007	1.700	1.580	1.670	69,700	20,540	90,240
2008	1.480	1.070	1.390	68,080	13,910	81,990
2009	1.340	0.620	1.230	60,300	4,960	65,260
NY						
2007	1.470	1.300	1.470	3,308	65	3,373
2008	1.820	1.030	1.790	4,004	103	4,107
2009	2.210	0.540	2.170	4,531	27	4,558
NC						
2007	2.400	1.500	2.110	26,400	7,800	34,200
2008	2.100	0.700	1.680	42,000	5,950	47,950
2009	1.900	0.400	1.570	48,450	2,880	51,330
OR						
2007	1.600	1.440	1.500	26,880	40,608	67,488
2008	1.440	0.900	1.150	28,224	21,150	49,374
2009	1.110	0.470	0.777	25,530	11,750	37,280
WA						
2007	2.150	1.390	1.680	24,080	25,576	49,656
2008	2.280	0.800	1.360	27,360	16,000	43,360
2009	1.740	0.430	0.776	16,530	11,395	27,925
US						
2007	2.140	1.540	1.850	320,070	211,005	531,075
2008	2.090	0.857	1.540	404,115	132,877	536,992
2009	1.970	0.452	1.390	438,737	62,782	501,519

¹ Small quantities of processed blueberries are included in fresh to avoid disclosure of individual operations.

**Berries: Harvested Acreage, Yield, Production, and Utilization
by Crop, State, and United States, 2007-2009**

Crop, State, and Year	Area Harvested	Yield Per Acre ¹	Production		Utilization	
			Total	Utilized	Fresh	Processed
	<i>Acres</i>	<i>Pounds</i>	<i>1,000 Pounds</i>	<i>1,000 Pounds</i>	<i>1,000 Pounds</i>	<i>1,000 Pounds</i>
Wild						
Blueberries						
ME						
2007			77,250	77,250	450	76,800
2008			89,950	89,950	550	89,400
2009			88,500	88,500	500	88,000
Boysenberries						
CA						
2007 ²	110	10,600	1,170	1,170		
2008 ²	70	7,570	530	530		
2009 ⁴						
OR						
2007	700	5,570	4,400	3,900	100	3,800
2008	700	3,810	2,840	2,670	270	2,400
2009	600	5,330	3,400	3,200	100	3,100
US						
2007 ²	810	6,260	5,570	5,070		
2008 ²	770	4,160	3,370	3,200		
2009	600	5,330	3,400	3,200	100	3,100
Loganberries						
OR						
2007	40	2,250	90	90	10	80
2008 ³	30	2,000	60	60		
2009 ⁴						
Black						
Raspberries						
OR						
2007	1,400	2,610	3,700	3,650	50	3,600
2008 ³	1,500	2,080	3,120	3,120		
2009 ³	1,100	2,850	3,430	3,130		
Red						
Raspberries						
OR						
2007	1,700	2,940	5,000	5,000	900	4,100
2008	1,500	3,370	5,050	5,050	1,050	4,000
2009	1,400	3,860	5,400	5,400	1,100	4,300
WA						
2007	9,500	5,800	55,100	55,100	550	54,550
2008	9,600	5,730	55,000	55,000	550	54,450
2009	9,700	6,770	65,700	65,700	700	65,000
US						
2007	11,200	5,370	60,100	60,100	1,450	58,650
2008	11,100	5,410	60,050	60,050	1,600	58,450
2009	11,100	6,410	71,100	71,100	1,800	69,300
All						
Raspberries						
CA ²						
2007	3,500	22,500	78,750	78,750		
2008	3,400	16,000	54,400	54,400		
2009	3,400	17,000	57,800	57,800		

¹Yield is based on utilized production.

²No breakdown of utilization available.

³Missing data not published to avoid disclosure of individual operations.

⁴Estimates discontinued in 2009.

**Berries: Price and Value by Crop, State,
and United States, 2007-2009**

Crop, State, and Year	Price per Pound			Value of Production		
	Fresh	Processed	All	Fresh	Processed	Total
	<i>Dollars</i>	<i>Dollars</i>	<i>Dollars</i>	<i>1,000 Dollars</i>	<i>1,000 Dollars</i>	<i>1,000 Dollars</i>
Wild						
Blueberries						
ME						
2007	1.900	1.070	1.070	855	82,176	83,031
2008	2.200	0.600	0.610	1,210	53,640	54,850
2009	2.450	0.350	0.362	1,225	30,800	32,025
Boysenberries						
CA						
2007 ¹			0.722			845
2008 ¹			0.728			386
2009 ³						
OR						
2007	1.540	0.540	0.566	154	2,052	2,206
2008	1.080	0.690	0.730	292	1,656	1,948
2009	1.490	0.630	0.657	149	1,953	2,102
US						
2007			0.602			3,051
2008 ¹			0.729			2,334
2009 ¹	1.490	0.630	0.657	149	1,953	2,102
Loganberries						
OR						
2007	1.620	0.900	0.978	16	72	88
2008 ²			1.050			63
2009 ³						
Black						
Raspberries						
OR						
2007	1.810	0.970	0.982	91	3,492	3,583
2008 ²			1.860			5,815
2009 ²			0.377			1,181
Red						
Raspberries						
OR						
2007	1.510	0.750	0.887	1,359	3,075	4,434
2008	1.870	1.530	1.600	1,964	6,120	8,084
2009	1.750	1.170	1.290	1,925	5,031	6,956
WA						
2007	1.110	0.500	0.506	611	27,275	27,886
2008	2.110	1.670	1.670	1,161	90,932	92,093
2009	2.720	0.850	0.870	1,904	55,250	57,154
US						
2007	1.360	0.517	0.538	1,970	30,350	32,320
2008	1.950	1.660	1.670	3,125	97,052	100,177
2009	2.130	0.870	0.902	3,829	60,281	64,110
All						
Raspberries						
CA ¹						
2007			2.880			226,800
2008			3.000			163,200
2009			2.900			167,620

¹No breakdown of utilization available.

²Missing data not published to avoid disclosure of individual operations.

³Estimates discontinued in 2009.

Oregon Blackberries: Harvested Acreage, Yield, Production, and Utilization by Variety, 2007-2009

Variety and Year	Area Harvested	Yield Per Acre ¹	Production		Utilization	
			Total	Utilized	Fresh	Processed
	<i>Acres</i>	<i>Pounds</i>	<i>1,000 Pounds</i>	<i>1,000 Pounds</i>	<i>1,000 Pounds</i>	<i>1,000 Pounds</i>
Cultivated Blackberries (OR)						
Marion						
2007	4,400	6,660	32,300	29,300	300	29,000
2008	4,000	5,100	21,200	20,400	200	20,200
2009	4,000	5,800	23,400	23,200	200	23,000
Evergreen						
2007	600	10,500	6,300	6,300	400	5,900
2008	600	8,000	4,800	4,800	400	4,400
2009	500	6,800	3,400	3,400	200	3,200
Other						
2007	1,700	13,700	25,300	23,300	2,000	21,300
2008	2,100	9,480	21,200	19,900	2,600	17,300
2009	2,400	9,830	24,600	23,600	5,200	18,400
All						
2007	6,700	8,790	63,900	58,900	2,700	56,200
2008	6,700	6,730	47,200	45,100	3,200	41,900
2009	6,900	7,280	51,400	50,200	5,600	44,600

¹ Yield is based on utilized production.

**Oregon Blackberries: Price and Value
by Variety, 2007-2009**

Variety and Year	Price per Pound			Value of Production		
	Fresh	Processed	All	Fresh	Processed	Total
	<i>Dollars</i>	<i>Dollars</i>	<i>Dollars</i>	<i>1,000 Dollars</i>	<i>1,000 Dollars</i>	<i>1,000 Dollars</i>
Cultivated Blackberries (OR)						
Marion						
2007	1.330	0.490	0.499	399	14,210	14,609
2008	1.440	0.590	0.598	288	11,918	12,206
2009	1.650	0.530	0.540	330	12,190	12,520
Evergreen						
2007	1.490	0.340	0.413	596	2,006	2,602
2008	1.860	0.430	0.549	744	1,892	2,636
2009	1.690	0.250	0.335	338	800	1,138
Other						
2007	1.220	0.420	0.489	2,440	8,946	11,386
2008	1.580	0.510	0.650	4,108	8,823	12,931
2009	1.320	0.430	0.626	6,864	7,912	14,776
All						
2007	1.270	0.448	0.486	3,435	25,162	28,597
2008	1.610	0.540	0.616	5,140	22,633	27,773
2009	1.350	0.469	0.566	7,532	20,902	28,434

**Sweet Cherries: Bearing Acreage, Yield, Production, and Utilization
by State and United States, 2007-2009 ¹**

State and Year	Bearing Acreage	Yield Per Acre ²	Production		Utilization	
			Total	Utilized	Fresh	Processed
	<i>Acres</i>	<i>Tons</i>	<i>Tons</i>	<i>Tons</i>	<i>Tons</i>	<i>Tons</i>
CA						
2007	26,000	3.27	85,000	81,800	67,400	14,400
2008	27,000	3.18	86,000	82,800	67,400	15,400
2009	28,000	2.79	78,000	75,000	63,000	12,000
ID						
2007	900	1.67	1,500	1,500		
2008	1,000	1.90	1,900	1,800		
2009	900	6.67	6,000	2,700		
MI						
2007	7,300	3.74	27,300	27,300	800	26,500
2008	7,200	3.68	26,500	26,300	1,200	25,100
2009	7,000	4.10	28,700	28,600	800	27,800
MT						
2007	720	3.39	2,440	2,180		
2008	710	2.20	1,560	1,450		
2009	710	3.37	2,390	1,055		
NY						
2007	700	1.70	1,190	1,180		
2008	700	1.50	1,050	920		
2009	700	1.77	1,240	940		
OR						
2007	12,500	2.80	35,000	34,000	20,500	13,500
2008	12,500	2.48	31,000	27,400	17,900	9,500
2009	12,500	5.36	67,000	56,000	36,400	19,600
UT						
2007	550	2.27	1,250	1,250	900	350
2008	500	0.10	50	50	50	
2009	500	3.08	1,540	1,330	1,330	
WA						
2007	33,000	4.76	157,000	157,000	129,000	28,000
2008	33,000	3.03	100,000	100,000	85,000	15,000
2009	35,000	7.00	245,000	210,000	182,000	28,000
US						
2007	81,670	3.80	310,680	306,210	222,560	83,650
2008	82,610	3.00	248,060	240,720	175,320	65,400
2009	85,310	5.04	429,870	375,625	287,600	88,025

¹ Missing data not published to avoid disclosure of individual operations.

² Yield is based on total production.

**Sweet Cherries: Price and Value by State
and United States, 2007-2009¹**

State and Year	Price per Ton			Value of Production		
	Fresh	Processed	All	Fresh	Processed	All
	<i>Dollars</i>	<i>Dollars</i>	<i>Dollars</i>	<i>1,000 Dollars</i>	<i>1,000 Dollars</i>	<i>1,000 Dollars</i>
CA						
2007	2,250.00	234.00	1,900.00	151,650	3,366	155,016
2008	2,840.00	202.00	2,350.00	191,416	3,118	194,534
2009	2,900.00	214.00	2,470.00	182,700	2,565	185,265
ID						
2007			2,100.00			3,146
2008			3,120.00			5,622
2009			1,100.00			2,975
MI						
2007	2,060.00	606.00	649.00	1,648	16,061	17,709
2008	2,620.00	569.00	662.00	3,144	14,271	17,415
2009	2,390.00	423.00	478.00	1,912	11,754	13,666
MT						
2007			1,630.00			3,561
2008			2,730.00			3,958
2009			1,490.00			1,567
NY						
2007			2,980.00			3,518
2008			3,520.00			3,241
2009			2,440.00			2,295
OR						
2007	1,892.00	776.00	1,450.00	38,786	10,470	49,256
2008	2,690.00	983.00	2,100.00	48,151	9,335	57,486
2009	1,870.00	658.00	1,450.00	68,068	12,898	80,966
UT						
2007	1,680.00	600.00	1,380.00	1,512	210	1,722
2008	2,440.00		2,440.00	122		122
2009	2,280.00		2,280.00	3,032		3,032
WA						
2007	2,400.00	483.00	2,060.00	309,600	13,528	323,128
2008	3,350.00	546.00	2,930.00	284,750	8,186	292,936
2009	1,120.00	403.00	1,020.00	203,840	11,273	215,113
US						
2007	2,310.00	527.00	1,820.00	512,968	44,088	557,056
2008	3,080.00	538.00	2,390.00	540,161	35,153	575,314
2009	1,620.00	442.00	1,340.00	466,005	38,874	504,879

¹ Missing data not published to avoid disclosure of individual operations.

**Tart Cherries: Bearing Acreage, Yield, Production, and Utilization
by State and United States, 2007-2009 ¹**

State and Year	Bearing Acreage	Yield Per Acre ²	Production		Utilization	
			Total	Utilized	Fresh	Processed
	<i>Acres</i>	<i>Pounds</i>	<i>Million Pounds</i>	<i>Million Pounds</i>	<i>Million Pounds</i>	<i>Million Pounds</i>
MI						
2007	26,100	7,510	196.0	193.0	0.5	192.5
2008	25,900	6,370	165.0	165.0	0.5	164.5
2009	26,000	10,000	260.0	242.0	0.5	241.5
NY						
2007	1,600	7,060	11.3	11.3		
2008	1,600	6,000	9.6	9.4		
2009	1,600	7,000	11.2	10.1		
OR						
2007	650	769	0.5	0.5		
2008	650	4,310	2.8	2.8		
2009	650	4,920	3.2	3.2		
PA						
2007	600	5,830	3.5	3.5		
2008	600	6,500	3.9	3.9		
2009	600	6,500	3.9	3.9		
UT						
2007	2,800	7,140	20.0	19.0		19.0
2008	2,900	6,900	20.0	19.0		19.0
2009	3,300	14,200	47.0	34.0		34.0
WA						
2007	1,300	8,850	11.5	11.4		
2008	1,300	9,620	12.5	12.5		
2009	1,600	10,400	16.7	16.4		
WI						
2007	1,700	6,120	10.4	10.0	0.2	9.8
2008	1,800	333	0.6	0.6		0.6
2009	1,800	6,060	10.9	10.9	0.2	10.7
US						
2007	34,750	7,290	253.2	248.7	1.6	247.1
2008	34,750	6,170	214.4	213.2	1.0	212.2
2009	35,550	9,930	352.9	320.5	1.3	319.2

¹ Missing data not published to avoid disclosure of individual operations.

² Yield is based on total production.

**Tart Cherries: Price and Value by State
and United States, 2007-2009¹**

State and Year	Price per Pound			Value of Production		
	Fresh	Processed	All	Fresh	Processed	All
	<i>Dollars</i>	<i>Dollars</i>	<i>Dollars</i>	<i>1,000 Dollars</i>	<i>1,000 Dollars</i>	<i>1,000 Dollars</i>
MI						
2007	0.950	0.262	0.264	475	50,430	50,905
2008	1.100	0.380	0.382	550	62,480	63,030
2009	0.800	0.165	0.166	400	39,805	40,205
NY						
2007			0.343			3,871
2008			0.413			3,879
2009			0.243			2,459
OR						
2007			0.346			173
2008			0.419			1,172
2009			0.845			2,704
PA						
2007			0.398			1,392
2008			0.425			1,658
2009			0.191			746
UT						
2007		0.250	0.250		4,750	4,750
2008		0.330	0.330		6,270	6,270
2009		0.240	0.240		8,160	8,160
WA						
2007			0.350			3,990
2008			0.330			4,125
2009			0.468			7,670
WI						
2007	0.490	0.280	0.284	98	2,744	2,842
2008		0.350	0.350		210	210
2009	0.647	0.199	0.208	129	2,134	2,263
US						
2007	1.050	0.268	0.273	1,679	66,244	67,923
2008	1.390	0.372	0.377	1,388	78,956	80,344
2009	0.972	0.197	0.200	1,264	62,943	64,207

¹ Missing data not published to avoid disclosure of individual operations.

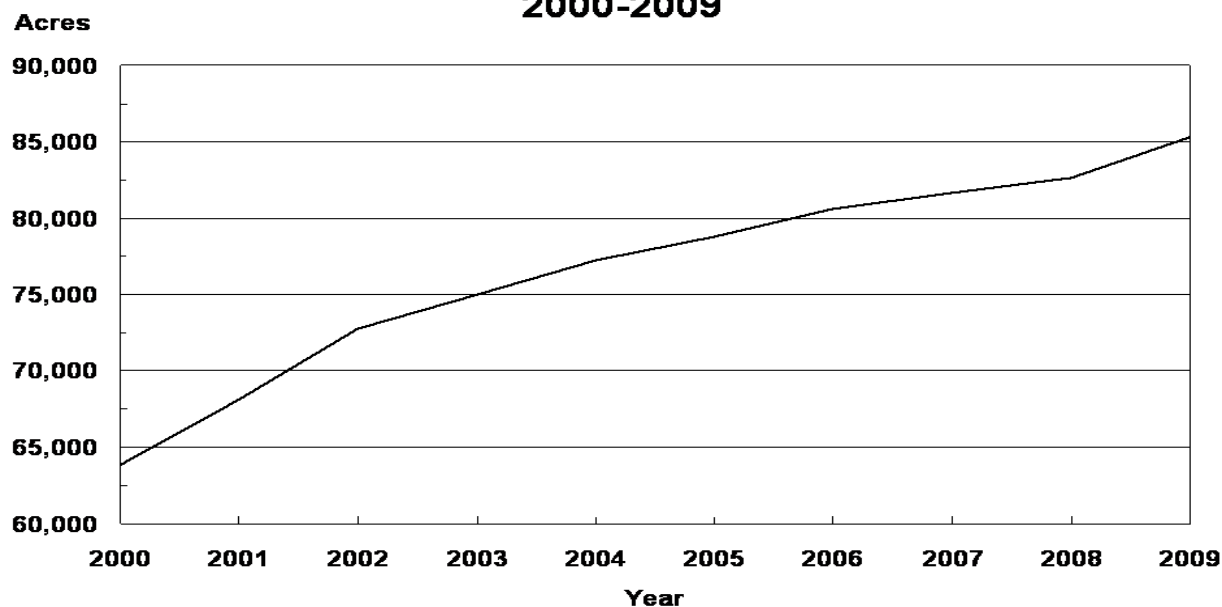
**Sweet and Tart Cherries: Processed Utilization, Use,
and Price by State and United States, 2007-2009**

Crop, Use, and State	Processed Utilization					
	Quantity			Price per Unit		
	2007	2008	2009	2007	2008	2009
	<i>Tons</i>	<i>Tons</i>	<i>Tons</i>	<i>Dollars per Ton</i>	<i>Dollars per Ton</i>	<i>Dollars per Ton</i>
Sweet Cherries						
Canned						
MI	1,060	1,830	1,250	730.00	460.00	590.00
OR	1,500	850	2,000	1,010.00	1,290.00	822.00
WA	4,000	2,000	4,000	1,170.00	1,390.00	653.00
US	6,560	4,680	7,250	1,062.00	1,008.00	689.00
Brined						
MI	17,400	14,100	17,750	440.00	540.00	410.00
OR	8,300	7,500	17,000	765.00	957.00	645.00
WA	13,000	8,000	12,500	508.00	502.00	450.00
Oth Sts	9,460	10,150	9,371	315.00	244.00	266.00
US	48,160	39,750	56,621	490.00	536.00	465.00
Other ¹						
MI	8,040	9,170	8,800	949.00	634.00	425.00
OR	3,700	1,150	600	704.00	922.00	482.00
WA	11,000	5,000	11,500	204.00	278.00	264.00
Oth Sts	6,190	5,650	3,254	169.00	153.00	143.00
US	28,930	20,970	24,154	468.00	435.00	312.00
	<i>Million Pounds</i>	<i>Million Pounds</i>	<i>Million Pounds</i>	<i>Dollars per Pound</i>	<i>Dollars per Pound</i>	<i>Dollars per Pound</i>
Tart Cherries						
Canned						
MI	39.0	39.0	43.0	0.270	0.435	0.130
Oth Sts	8.7	10.8	9.1	0.306	0.372	0.234
US	47.7	49.8	52.1	0.277	0.421	0.148
Frozen						
MI	143.0	117.0	175.0	0.265	0.370	0.180
Oth Sts	36.3	28.0	57.0	0.273	0.339	0.287
US	179.3	145.0	232.0	0.267	0.364	0.206
Other ²						
MI	10.5	8.5	23.5	0.191	0.262	0.116
Oth Sts	9.6	8.9	11.6	0.340	0.331	0.402
US	20.1	17.4	35.1	0.262	0.297	0.211

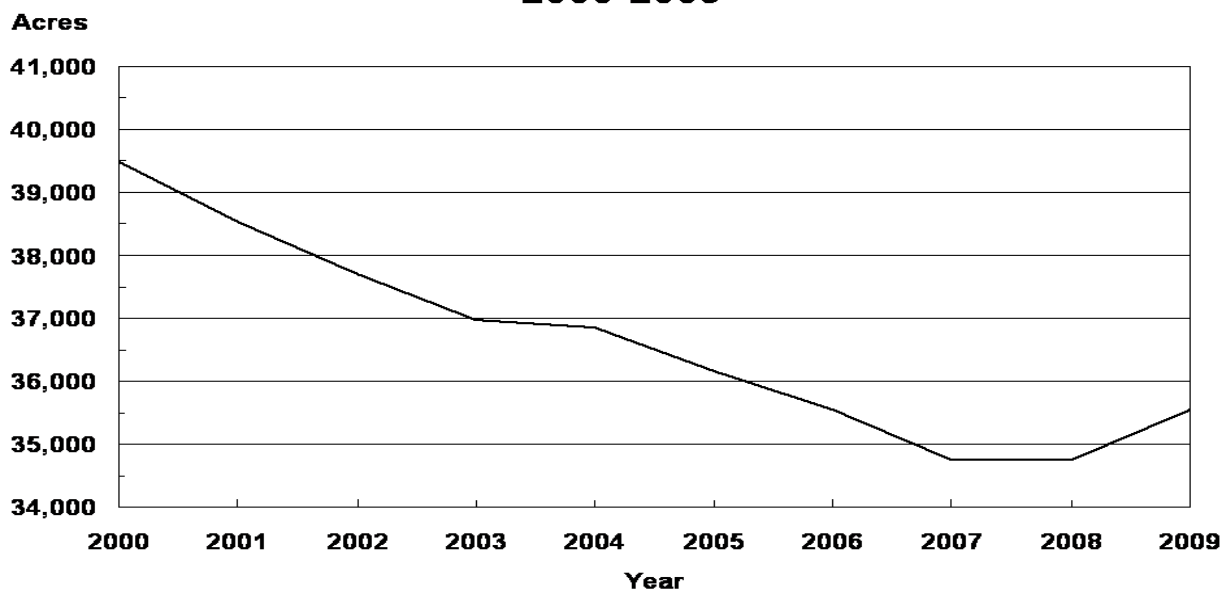
¹ Includes Montana canned utilization and other processed utilizations (frozen, juice, etc.) from all States.

² Juice, wine, brined, and dried.

U.S. Sweet Cherries Bearing Acres 2000-2009



U.S. Tart Cherries Bearing Acres 2000-2009



**Cranberries: Area Harvested, Yield, Production and Utilization
by State and United States, 2007-2009**

Year and State	Area Harvested	Yield per Acre ¹	Production		Utilization	
			Total	Utilized	Fresh	Processed
	<i>Acres</i>	<i>Barrels</i> ²	<i>Barrels</i> ²	<i>Barrels</i> ²	<i>Barrels</i> ²	<i>Barrels</i> ²
2007						
MA	13,000	117.1	1,522,000	1,522,000	101,000	1,421,000
NJ ³	3,100	171.0	531,000	531,000		531,000
OR ³	2,700	183.3	495,000	495,000		495,000
WA	1,700	103.5	176,000	176,000	29,000	147,000
WI	17,600	218.0	3,830,000	3,830,000	230,000	3,600,000
US	38,100	172.0	6,554,000	6,554,000	360,000	6,194,000
2008						
MA	13,000	182.6	2,374,000	2,374,000	128,000	2,246,000
NJ ³	3,100	165.2	512,000	512,000		512,000
OR ³	2,700	148.1	400,000	400,000		400,000
WA	1,700	64.1	109,000	109,000	23,000	86,000
WI	17,700	252.5	4,470,000	4,470,000	220,000	4,250,000
US	38,200	205.9	7,865,000	7,865,000	371,000	7,494,000
2009						
MA	13,000	138.7	1,803,000	1,803,000	83,000	1,720,000
NJ ³	3,100	179.0	555,000	555,000		555,000
OR ³	2,700	157.4	425,000	425,000		425,000
WA	1,700	95.3	162,000	162,000	28,000	134,000
WI	18,000	219.4	3,950,000	3,950,000	220,000	3,730,000
US	38,500	179.1	6,895,000	6,895,000	331,000	6,564,000

¹ Yield is based on total production.

² A barrel weighs 100 pounds.

³ Small quantities of fresh cranberries are included in processed to avoid disclosure of individual operations.

**Cranberries: Utilization, Price, and Value
by State and United States, 2007-2009**

Year and State	Price per Barrel ^{1 2}			Value of Utilized Production		
	Fresh	Processed	All	Fresh	Processed	All
	<i>Dollars</i>	<i>Dollars</i>	<i>Dollars</i>	<i>1,000 Dollars</i>	<i>1,000 Dollars</i>	<i>1,000 Dollars</i>
2007						
MA	70.10	48.40	49.80	7,080	68,776	75,856
NJ ³		46.10	46.10		24,479	24,479
OR ³		59.60	59.60		29,502	29,502
WA	66.60	46.30	49.60	1,931	6,806	8,737
WI	66.60	49.50	50.50	15,318	178,200	193,518
US	67.60	49.70	50.70	24,329	307,763	332,092
2008						
MA	74.00	57.10	58.00	9,472	128,247	137,719
NJ ³		52.50	52.50		26,880	26,880
OR ³		91.50	91.50		36,600	36,600
WA	71.30	52.00	56.10	1,640	4,472	6,112
WI	71.00	54.60	55.40	15,620	232,050	247,670
US	72.10	57.10	57.80	26,732	428,249	454,981
2009						
MA	74.50	47.60	48.80	6,184	81,872	88,056
NJ ³		55.60	55.60		30,858	30,858
OR ³		44.10	44.10		18,743	18,743
WA	77.70	56.00	59.80	2,176	7,504	9,680
WI	77.70	52.80	54.20	17,094	196,944	214,038
US	76.90	51.20	52.40	25,454	335,921	361,375

¹ Weighted average of co-op and independent sales. Co-op prices represent pool proceeds less returns for processing non-cranberry products, capital stock dividends, capital stock retains, and other retains.

² A barrel weighs 100 pounds.

³ Small quantities of fresh cranberries are included in processed to avoid disclosure of individual operations.

**Grapes: Bearing Acreage and Yield by Type,
State, and United States, 2007-2009**

State and Type	Bearing Acreage			Yield per Acre ¹		
	2007	2008	2009	2007	2008	2009
	<i>Acres</i>	<i>Acres</i>	<i>Acres</i>	<i>Tons</i>	<i>Tons</i>	<i>Tons</i>
AZ ²	250	250		3.60	3.20	
AR	750	700	600	0.67	2.43	3.17
CA						
All Types	789,000	786,000	786,000	7.90	8.33	8.03
Wine	480,000	482,000	482,000	6.85	6.34	7.14
Table	82,000	83,000	83,000	9.65	11.70	10.30
Raisin	227,000	221,000	221,000	9.48	11.40	9.12
GA	1,200	1,200	1,400	2.42	2.92	3.21
MI	14,100	14,200	14,200	7.10	5.19	6.80
MO	1,400	1,500	1,600	1.79	3.47	2.75
NY	37,000	37,000	37,000	4.86	4.65	3.59
NC	1,700	1,700	1,800	2.15	3.29	2.67
OH	1,900	1,900	1,900	4.00	2.98	3.02
OR	13,800	14,900	16,500	2.80	2.33	2.24
PA	13,600	13,600	13,600	6.18	7.88	4.71
TX	2,900	2,500	3,300	1.69	1.68	1.88
VA	2,400	2,500	2,800	2.33	2.80	3.07
WA						
All Types	56,500	58,000	60,000	7.01	6.03	6.50
Wine	30,500	32,000	34,000	4.16	4.53	4.85
Juice	26,000	26,000	26,000	10.30	7.88	8.65
US	936,500	935,950	940,700	7.54	7.82	7.51

¹ Yield is based on total production.

² Estimates discontinued in 2009.

**Grapes: Total and Utilized Production, Price, and Value
by Type, State, and United States, 2007-2009**

State and Type	Total Production			Utilized Production		
	2007	2008	2009	2007	2008	2009
	<i>Tons</i>	<i>Tons</i>	<i>Tons</i>	<i>Tons</i>	<i>Tons</i>	<i>Tons</i>
AZ ¹	900	800		900	800	
AR	500	1,700	1,900	500	1,700	1,790
CA						
All Types	6,230,000	6,548,000	6,311,000	6,230,000	6,548,000	6,311,000
Wine	3,288,000	3,055,000	3,440,000	3,288,000	3,055,000	3,440,000
Table ²	791,000	973,000	855,000	791,000	973,000	855,000
Raisin ²	2,151,000	2,520,000	2,016,000	2,151,000	2,520,000	2,016,000
GA	2,900	3,500	4,500	2,900	3,500	4,500
MI	100,100	73,700	96,500	100,100	73,700	78,400
MO	2,500	5,200	4,400	2,500	5,200	4,400
NY	180,000	172,000	133,000	180,000	172,000	130,000
NC	3,650	5,600	4,800	3,650	5,600	4,800
OH	7,600	5,660	5,740	7,600	5,350	5,180
OR	38,600	34,700	37,000	38,600	34,700	37,000
PA	84,000	107,200	64,000	84,000	94,200	62,000
TX	4,900	4,200	6,200	4,100	4,000	3,050
VA	5,600	7,000	8,600	5,400	6,800	7,980
WA						
All Types	396,000	350,000	390,000	396,000	350,000	390,000
Wine	127,000	145,000	165,000	127,000	145,000	165,000
Juice	269,000	205,000	225,000	269,000	205,000	225,000
US	7,057,250	7,319,260	7,067,640	7,056,250	7,305,550	7,040,100
	Price per Ton			Value of Utilized Production		
	2007	2008	2009	2007	2008	2009
	<i>Dollars</i>	<i>Dollars</i>	<i>Dollars</i>	<i>1,000 Dollars</i>	<i>1,000 Dollars</i>	<i>1,000 Dollars</i>
AZ ^{1 3}		775.00			620	
AR ³		1,080.00	753.00		1,844	1,347
CA						
All Types	494.00	449.00	435.00	3,075,614	2,937,838	2,743,356
Wine	564.00	609.00	502.00	1,855,120	1,859,150	1,726,880
Table ²	787.00	406.00	457.00	622,894	394,813	390,968
Raisin ²	278.00	271.00	310.00	597,600	683,875	625,508
GA	1,200.00	1,130.00	1,480.00	3,477	3,950	6,645
MI	280.00	369.00	352.00	28,044	27,197	27,586
MO	932.00	962.00	902.00	2,331	5,001	3,968
NY	296.00	342.00	372.00	53,303	58,846	48,336
NC	1,270.00	1,170.00	1,250.00	4,630	6,563	5,981
OH	390.00	356.00	973.00	2,962	1,902	5,040
OR	1,880.00	2,050.00	2,050.00	72,568	71,135	75,850
PA	266.00	296.00	299.00	22,362	27,874	18,563
TX	1,160.00	1,200.00	1,170.00	4,751	4,804	3,554
VA	1,400.00	1,530.00	1,600.00	7,560	10,404	12,768
WA						
All Types	440.00	573.00	561.00	174,420	200,600	218,820
Wine	954.00	1,030.00	988.00	121,158	149,350	163,020
Juice	198.00	250.00	248.00	53,262	51,250	55,800
Oth Sts	787.00			1,102		
US	489.00	460.00	451.00	3,453,124	3,358,578	3,171,813

¹ Estimates discontinued in 2009.

² Fresh equivalent of dried and not dried.

³ Missing estimates included in Other States to avoid disclosure of individual operations.

**Grapes: Fresh and Processed Utilization, and Price
by Type, State, and United States, 2007-2009**

Utilization, State, and Type	Fresh and Processed Utilization					
	Quantity			Price per Ton		
	2007	2008	2009	2007	2008	2009
	<i>Tons</i>	<i>Tons</i>	<i>Tons</i>	<i>Dollars</i>	<i>Dollars</i>	<i>Dollars</i>
Fresh						
CA						
All Types	913,000	976,000	939,000	870.00	506.00	607.00
Wine ¹	40,000	40,000	40,000	500.00	500.00	
Table	700,000	773,000	711,000	868.00	461.00	510.00
Raisin ¹	173,000	163,000	188,000	962.00	718.00	
MI	1,100	1,200	1,300	2,500.00	2,700.00	2,400.00
MO	60	70	60	1,040.00	1,080.00	1,040.00
NY	4,000	4,000	2,000	900.00	727.00	1,280.00
NC	250	350	430	2,200.00	2,250.00	2,730.00
OH	100	70	20	1,260.00	1,150.00	900.00
PA	500	1,500	200	850.00	700.00	900.00
TX	300	50	50	1,270.00	1,280.00	1,480.00
Oth Sts	1,020	1,960	2,950	1,330.00	1,310.00	1,780.00
US	920,330	985,200	946,010	873.00	512.00	616.00
Processed						
CA						
All Types	5,317,000	5,572,000	5,372,000	429.00	439.00	405.00
Wine	3,248,000	3,015,000	3,400,000	565.00	610.00	500.00
Table	91,000	200,000	144,000	168.00	192.00	197.00
Raisin	1,978,000	2,357,000	1,828,000	218.00	240.00	243.00
MI	99,000	72,500	77,100	255.00	330.00	317.00
MO	2,440	5,130	4,340	930.00	960.00	900.00
NY	176,000	168,000	128,000	282.00	333.00	358.00
NC	3,400	5,250	4,370	1,200.00	1,100.00	1,100.00
OH	7,500	5,280	5,160	378.00	345.00	973.00
OR ²	38,600	34,700	37,000	1,880.00	2,050.00	2,050.00
PA	83,500	92,700	61,800	263.00	289.00	297.00
TX	3,800	3,950	3,000	1,150.00	1,200.00	1,160.00
VA	5,400	6,800	7,980	1,400.00	1,530.00	1,600.00
WA						
All Types	396,000	350,000	390,000	440.00	573.00	561.00
Wine	127,000	145,000	165,000	954.00	1,030.00	988.00
Juice	269,000	205,000	225,000	198.00	250.00	248.00
Oth Sts	3,280	4,040	3,340	984.00	954.00	824.00
US	6,135,920	6,320,350	6,094,090	432.00	452.00	425.00

¹ Missing data not published to avoid disclosure of individual operations.

² Includes small quantities sold fresh.

**Grapes: Fresh and Processed Value by Type,
State, and United States, 2007-2009**

Utilization, State, and Type	Fresh and Processed Utilization		
	Value of Utilized Production		
	2007	2008	2009
	<i>1,000 Dollars</i>	<i>1,000 Dollars</i>	<i>1,000 Dollars</i>
Fresh			
CA			
All Types	794,026	493,387	570,158
Wine ¹	20,000	20,000	
Table	607,600	356,353	362,610
Raisin ¹	166,426	117,034	
MI	2,750	3,240	3,120
MO	62	76	62
NY	3,600	2,908	2,560
NC	550	788	1,174
OH	126	81	18
PA	425	1,050	180
TX	381	64	74
Oth Sts	1,351	2,558	5,239
US	803,271	504,152	582,585
Processed			
CA			
All Types	2,281,588	2,444,451	2,173,198
Wine	1,835,120	1,839,150	1,700,000
Table	15,294	38,460	28,358
Raisin	431,174	566,841	444,840
MI	25,294	23,957	24,466
MO	2,269	4,925	3,906
NY	49,703	55,938	45,776
NC	4,080	5,775	4,807
OH	2,836	1,821	5,022
OR ²	72,568	71,135	75,850
PA	21,937	26,824	18,383
TX	4,370	4,740	3,480
VA	7,560	10,404	12,768
WA			
All Types	174,420	200,600	218,820
Wine	121,158	149,350	163,020
Juice	53,262	51,250	55,800
Oth Sts	3,228	3,856	2,753
US	2,649,853	2,854,426	2,589,229

¹ Missing data not published to avoid disclosure of individual operations.

² Includes small quantities sold fresh.

**Grapes: Processed Utilization, Use, and Price
by Type, State, and United States, 2007-2009**

Use and State	Processed Utilization					
	Quantity			Price per Ton		
	2007	2008	2009	2007	2008	2009
	<i>Tons</i>	<i>Tons</i>	<i>Tons</i>	<i>Dollars</i>	<i>Dollars</i>	<i>Dollars</i>
Canned						
CA						
Raisin	21,000	25,000	20,000	314.00	323.00	337.00
Juice ^{1 2}						
MI	93,600	67,200	72,800	216.00	280.00	277.00
NY	135,000	123,000	84,000	223.00	266.00	271.00
OH	5,800	4,430	3,100	231.00	265.00	796.00
PA	69,000	79,500	53,400	216.00	270.00	273.00
WA	269,000	205,000	225,000	198.00	250.00	248.00
Oth Sts ³	1,000			747.00		
US	573,400	479,130	438,300	210.00	262.00	264.00
Wine						
CA						
All Types	3,675,000	3,674,000	3,800,000	517.00	539.00	465.00
Wine	3,248,000	3,015,000	3,400,000	565.00	610.00	500.00
Table	63,000	165,000	100,000	138.00	180.00	165.00
Raisin	364,000	494,000	300,000	155.00	224.00	165.00
MI	5,400	5,300	4,300	940.00	970.00	1,000.00
MO	2,440	5,130	4,340	930.00	960.00	900.00
NY	41,000	45,000	44,000	478.00	516.00	523.00
NC	3,400	5,250	4,370	1,200.00	1,100.00	1,100.00
OH	1,700	850	2,060	880.00	761.00	1,240.00
OR ²	38,600	34,700	37,000	1,880.00	2,050.00	2,050.00
PA	14,500	13,200	8,400	485.00	406.00	453.00
TX	3,800	3,950	3,000	1,150.00	1,200.00	1,160.00
VA	5,400	6,800	7,980	1,400.00	1,530.00	1,600.00
WA	127,000	145,000	165,000	954.00	1,030.00	988.00
Oth Sts ³	2,280	4,040	3,340	1,090.00	954.00	824.00
US	3,920,520	3,943,220	4,083,790	548.00	574.00	506.00
Dried (Fr Basis)						
CA						
All Types	1,621,000	1,873,000	1,552,000	231.00	244.00	258.00
Table	28,000	35,000	44,000	236.00	250.00	270.00
Raisin	1,593,000	1,838,000	1,508,000	231.00	244.00	258.00

¹ Includes small quantities of other processed (jam, jelly, etc.).

² Includes small quantities for other uses.

³ Grapes processed for juice in 2008 and 2009 are included in Other States wine to avoid disclosure of individual operations.

**Concord Grapes: Processed Utilization by State
and United States, 2007-2009**

State	Processed Utilization		
	2007	2008	2009
	<i>Tons</i>	<i>Tons</i>	<i>Tons</i>
MI	61,000	45,800	45,400
NY	131,000	127,000	84,900
OH	5,800	4,400	4,770
PA	71,500	81,500	55,800
WA	246,000	188,000	205,000
Oth.Sts	172	430	920
US	515,472	447,130	396,790

**Concord Grapes for Processing: Marketing Year Average Prices,
New York and Pennsylvania, 2007-2009**

State	2007	2008	2009
	<i>Dollars per Ton</i>	<i>Dollars per Ton</i>	<i>Dollars per Ton</i>
NY	220.00	256.00	264.00
PA	215.00	256.00	265.00

**Niagara Grapes: Processed Utilization by State
and United States, 2007-2009**

State	Processed Utilization		
	2007	2008	2009
	<i>Tons</i>	<i>Tons</i>	<i>Tons</i>
MI	33,500	22,000	27,500
NY	21,000	15,000	12,400
OH	500	190	450
PA	5,600	6,200	3,300
WA	23,000	17,000	20,000
US	83,600	60,390	63,650

**Peaches: Bearing Acreage and Yield by Type,
State, and United States, 2007-2009**

State	Bearing Acreage			Yield per Acre ¹		
	2007	2008	2009	2007	2008	2009
	<i>Acres</i>	<i>Acres</i>	<i>Acres</i>	<i>Tons</i>	<i>Tons</i>	<i>Tons</i>
AL	2,500	2,500	2,500	1.20	2.80	1.60
AR	1,300	1,300	1,200	0.01	3.38	1.25
CA						
Freestone	31,000	31,000	28,000	14.40	14.00	12.50
CO	2,300	2,300	2,600	5.65	6.09	5.00
CT	400	400	400	2.75	3.00	3.25
GA	9,500	9,500	10,500	1.37	2.95	3.05
ID	1,100	1,200	1,300	6.36	6.67	7.08
IL	1,600	1,600	1,600	0.06	5.46	5.13
KY ²	380	380		0.05	4.47	
LA ²	250	240		2.40	1.88	
MD	850	850	850	3.88	4.09	4.47
MA	430	430	430	3.84	3.84	4.19
MI	4,300	4,300	4,300	4.77	3.26	4.00
MO	1,700	1,700	1,700	0.01	3.59	2.82
NJ	6,300	6,200	6,200	5.08	5.48	5.65
NY	1,700	1,600	1,600	3.71	3.44	4.06
NC	1,200	1,200	1,100	0.54	4.67	3.82
OH	1,300	1,300	1,300	3.15	5.08	1.97
OK ²	800	800		1.13	1.25	
OR ²	650	650		4.62	2.46	
PA	4,400	4,400	4,400	4.41	4.82	6.33
SC	14,000	14,000	14,000	0.89	4.29	5.36
TN ^{2 3}	500	500			3.20	
TX	4,600	4,900	5,500	1.57	1.61	0.89
UT	1,500	1,500	1,500	3.00	3.33	3.87
VA	1,000	1,000	1,000	1.60	5.20	5.80
WA	2,300	2,300	2,300	8.04	7.30	7.83
WV	950	950	950	4.42	5.89	5.58
Total Above	98,810	99,000	95,230	6.32	7.16	6.69
CA						
Clingstone	26,500	25,000	24,500	19.00	17.00	19.10
US	125,310	124,000	119,730	8.99	9.16	9.24

¹ Yield is based on total production.

² Estimates discontinued in 2009.

³ No significant commercial production in 2007 due to freeze damage.

**Peaches: Bearing Acreage and Yield by Type,
California, 2007-2009**

Type	Bearing Acreage			Yield per Acre ¹		
	2007	2008	2009	2007	2008	2009
	<i>Acres</i>	<i>Acres</i>	<i>Acres</i>	<i>Tons</i>	<i>Tons</i>	<i>Tons</i>
Freestone	31,000	31,000	28,000	14.40	14.00	12.50
Clingstone	26,500	25,000	24,500	19.00	17.00	19.10
Total	57,500	56,000	52,500	16.50	15.30	15.60

¹ Yield is based on total production.

**Peaches: Total and Utilized Production, by Type,
State, and United States, 2007-2009**

State	Total Production			Utilized Production		
	2007	2008	2009	2007	2008	2009
	<i>Tons</i>	<i>Tons</i>	<i>Tons</i>	<i>Tons</i>	<i>Tons</i>	<i>Tons</i>
AL	3,000	7,000	4,000	2,500	6,000	3,000
AR	15	4,400	1,500	10	4,200	1,120
CA						
Freestone	446,000	433,000	349,000	446,000	433,000	349,000
CO	13,000	14,000	13,000	11,000	13,000	11,000
CT	1,100	1,200	1,300	1,100	1,200	1,200
GA	13,000	28,000	32,000	12,000	25,000	30,000
ID	7,000	8,000	9,200	6,860	7,420	8,300
IL	100	8,730	8,210	90	7,960	7,580
KY ¹	20	1,700		20	1,600	
LA ¹	600	450		600	450	
MD	3,300	3,480	3,800	3,200	3,470	3,800
MA	1,650	1,650	1,800	1,600	1,650	1,750
MI	20,500	14,000	17,200	19,100	13,700	16,700
MO	15	6,100	4,800	15	6,100	4,800
NJ	32,000	34,000	35,000	28,800	26,000	33,000
NY	6,300	5,500	6,500	6,300	5,200	6,400
NC	650	5,600	4,200	650	5,250	4,150
OH	4,100	6,600	2,560	4,000	6,500	2,410
OK ¹	900	1,000		800	800	
OR ¹	3,000	1,600		2,700	1,500	
PA	19,400	21,200	27,850	19,400	21,200	27,750
SC	12,500	60,000	75,000	12,000	57,000	66,000
TN ^{1 2}		1,600			1,600	
TX	7,200	7,900	4,900	5,700	6,300	3,800
UT	4,500	5,000	5,800	4,400	4,500	5,500
VA	1,600	5,200	5,800	1,550	5,100	5,010
WA	18,500	16,800	18,000	18,500	16,800	18,000
WV	4,200	5,600	5,300	4,000	5,000	5,290
Total Above	624,150	709,310	636,720	612,895	687,500	615,560
CA						
Clingstone	503,000	426,000	469,000	503,000	426,000	469,000
US	1,127,150	1,135,310	1,105,720	1,115,895	1,113,500	1,084,560

¹ Estimates discontinued in 2009.

² No significant commercial production in 2007 due to freeze damage.

**Peaches: Total and Utilized Production, by Type,
California, 2007-2009**

Type	Total Production			Utilized Production		
	2007	2008	2009	2007	2008	2009
	<i>Tons</i>	<i>Tons</i>	<i>Tons</i>	<i>Tons</i>	<i>Tons</i>	<i>Tons</i>
Freestone	446,000	433,000	349,000	446,000	433,000	349,000
Clingstone	503,000	426,000	469,000	503,000	426,000	469,000
Total	949,000	859,000	818,000	949,000	859,000	818,000

**Peaches: Price and Value by Type, State,
and United States, 2007-2009**

State	Price per Ton			Value of Utilized Production		
	2007	2008	2009	2007	2008	2009
	<i>Dollars</i>	<i>Dollars</i>	<i>Dollars</i>	<i>1,000 Dollars</i>	<i>1,000 Dollars</i>	<i>1,000 Dollars</i>
AL	1,050.00	1,030.00	1,250.00	2,625	6,184	3,750
AR	1,300.00	1,110.00	1,400.00	13	4,660	1,568
CA						
Freestone	402.00	339.00	479.00	179,175	146,692	167,316
CO	1,550.00	1,430.00	1,660.00	17,080	18,540	18,300
CT	1,800.00	2,000.00	1,800.00	1,980	2,400	2,160
GA	819.00	773.00	930.00	9,830	19,326	27,890
ID	1,150.00	681.00	877.00	7,879	5,050	7,280
IL	1,200.00	1,160.00	1,200.00	108	9,259	9,087
KY ¹	2,050.00	1,630.00		41	2,608	
LA ¹	1,900.00	2,310.00		1,140	1,040	
MD	1,170.00	1,150.00	1,120.00	3,744	3,977	4,260
MA	1,800.00	2,500.00	2,400.00	2,880	4,125	4,200
MI	853.00	661.00	723.00	16,298	9,052	12,075
MO	1,730.00	1,850.00	1,500.00	26	11,285	7,200
NJ	1,140.00	920.00	1,020.00	32,832	23,920	33,660
NY	634.00	922.00	845.00	3,995	4,796	5,406
NC	1,130.00	1,010.00	990.00	735	5,303	4,109
OH	1,510.00	1,370.00	1,640.00	6,040	8,905	3,952
OK ¹	1,590.00	1,600.00		1,272	1,280	
OR ¹	970.00	1,000.00		2,618	1,504	
PA	903.00	1,020.00	1,040.00	17,524	21,528	28,913
SC	1,130.00	874.00	977.00	13,616	49,831	64,488
TN ^{1 2}		1,580.00			2,528	
TX	1,950.00	2,100.00	1,900.00	11,115	13,230	7,220
UT	667.00	868.00	1,040.00	2,934	3,906	5,720
VA	1,040.00	1,070.00	1,250.00	1,618	5,457	6,263
WA	480.00	498.00	440.00	8,873	8,361	7,914
WV	858.00	650.00	741.00	3,431	3,250	3,920
Total Above	570.00	579.00	709.00	349,422	397,997	436,651
CA						
Clingstone	304.00	347.00	338.00	152,665	147,857	158,452
US	450.00	490.00	549.00	502,087	545,854	595,103

¹ Estimates discontinued in 2009.

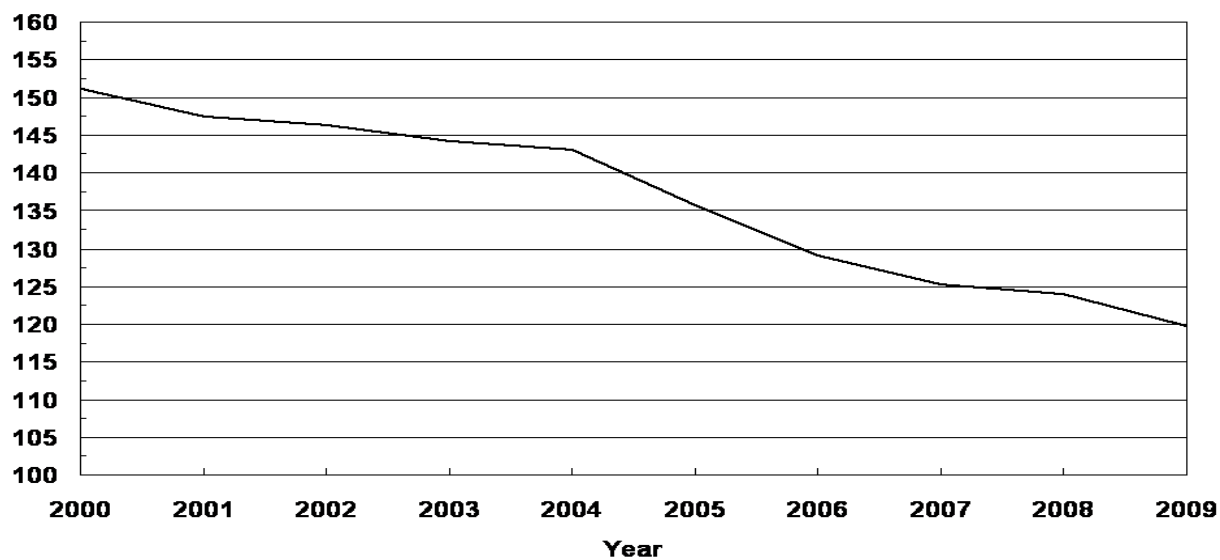
¹ No significant commercial production in 2007 due to freeze damage.

**Peaches: Price and Value by Type,
California, 2007-2009**

Type	Price per Ton			Value of Utilized Production		
	2007	2008	2009	2007	2008	2009
	<i>Dollars</i>	<i>Dollars</i>	<i>Dollars</i>	<i>1,000 Dollars</i>	<i>1,000 Dollars</i>	<i>1,000 Dollars</i>
Freestone	402.00	339.00	479.00	179,175	146,692	167,316
Clingstone	304.00	347.00	338.00	152,665	147,857	158,452
Total	350.00	343.00	398.00	331,840	294,549	325,768

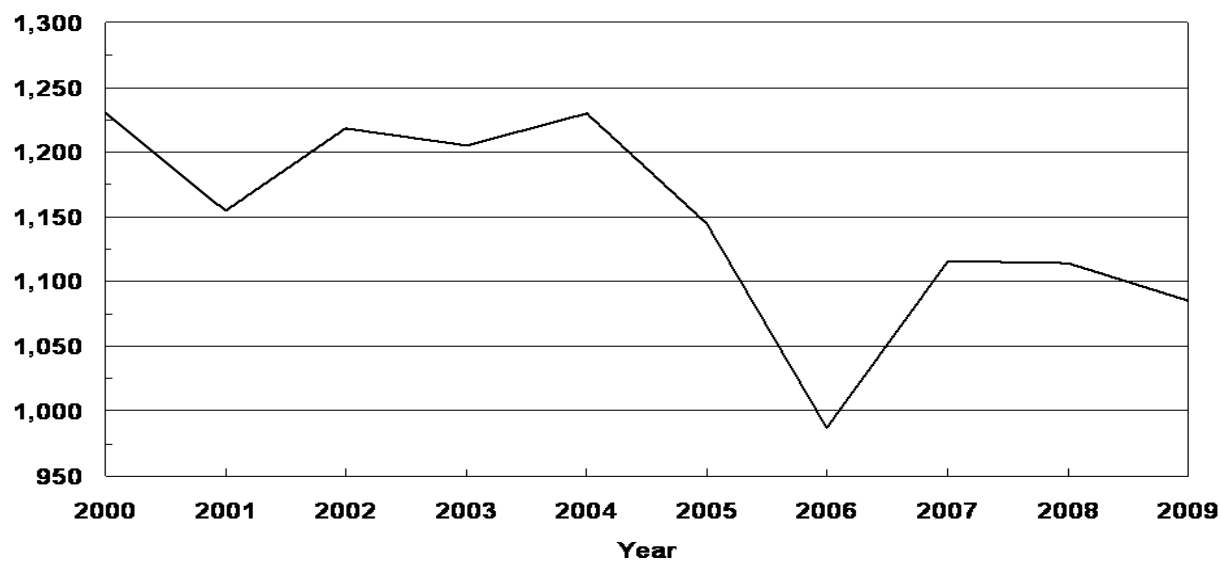
U.S. Peaches Bearing Acres 2000-2009

(000) Acres



U.S. Peaches Utilized Production 2000-2009

(000) Tons



**Peaches: Fresh and Processed Utilization, and Price
by Type, State, and United States, 2007-2009**

Use and State	Fresh and Processed Utilization					
	Quantity			Price per Unit		
	2007	2008	2009	2007	2008	2009
	<i>Tons</i>	<i>Tons</i>	<i>Tons</i>	<i>Dollars per Ton</i>	<i>Dollars per Ton</i>	<i>Dollars per Ton</i>
Fresh						
AL ¹	2,500			1,050.00		
CA						
Freestone	297,000	299,000	260,000	498.00	395.00	563.00
CT	1,100	1,200	1,200	1,800.00	2,000.00	1,800.00
GA	11,500	24,000	28,000	840.00	792.00	971.00
IL ¹	90			1,200.00		
KY ²	20	1,600		2,050.00	1,630.00	
LA ²	600	450		1,900.00	2,310.00	
MD ¹	3,200	3,360		1,170.00	1,170.00	
MA	1,600	1,650	1,750	1,800.00	2,500.00	2,400.00
MO	15	6,100	4,800	1,730.00	1,850.00	1,500.00
NY ¹	3,000			754.00		
OH	4,000	6,500	2,410	1,510.00	1,370.00	1,640.00
OK ²	800	800		1,590.00	1,600.00	
SC	11,000	53,000	63,000	1,200.00	915.00	1,010.00
TN ^{2,3}		1,600			1,580.00	
TX	5,700	6,300	3,800	1,950.00	2,100.00	1,900.00
VA	1,550	5,100	5,010	1,040.00	1,070.00	1,250.00
WV	4,000	5,000	5,290	858.00	650.00	741.00
Oth Sts	93,510	114,140	126,010	1,090.00	1,020.00	1,090.00
US	441,185	529,800	501,270	706.00	684.00	816.00
	<i>Tons</i>	<i>Tons</i>	<i>Tons</i>	<i>Dollars per Ton</i>	<i>Dollars per Ton</i>	<i>Dollars per Ton</i>
Processed						
CA						
Clingstone	503,000	426,000	469,000	304.00	347.00	338.00
Freestone ⁴	149,000	134,000	89,000	224.00	226.00	252.00
GA	500	1,000	2,000	340.00	318.00	351.00
MD ¹		110			418.00	
NY ¹	3,300			525.00		
SC	1,000	4,000	3,000	416.00	334.00	286.00
Oth Sts	17,910	18,590	20,290	250.00	297.00	256.00
US ⁵	674,710	583,700	583,290	283.00	315.00	319.00

¹ Missing data included in Other States to avoid disclosure of individual operations.

² Estimates discontinued in 2009.

³ No significant commercial production in 2007 due to freeze damage.

⁴ CA Freestone quantity and value include dried, price excludes dried.

⁵ US quantity, price, and value include dried.

**Peaches: Fresh and Processed Value by State
and United States, 2007-2009**

Use and State	Fresh and Processed Utilization		
	Value of Utilized Production		
	2007	2008	2009
	<i>1,000 Dollars</i>	<i>1,000 Dollars</i>	<i>1,000 Dollars</i>
Fresh			
AL ¹	2,625		
CA			
Freestone	147,906	118,105	146,380
CT	1,980	2,400	2,160
GA	9,660	19,008	27,188
IL ¹	108		
KY ²	41	2,608	
LA ²	1,140	1,040	
MD ¹	3,744	3,931	
MA	2,880	4,125	4,200
MO	26	11,285	7,200
NY ¹	2,262		
OH	6,040	8,905	3,952
OK ²	1,272	1,280	
SC	13,200	48,495	63,630
TN ^{2 3}		2,528	
TX	11,115	13,230	7,220
VA	1,618	5,457	6,263
WV	3,431	3,250	3,920
Oth Sts	102,317	116,547	136,854
US	311,365	362,194	408,967
Processed			
CA			
Clingstone	152,665	147,857	158,452
Freestone ⁴	31,269	28,587	20,936
GA	170	318	702
MD ¹		46	
NY ¹	1,733		
SC	416	1,336	858
Oth Sts	4,469	5,516	5,188
US ⁵	190,722	183,660	186,136

¹ Missing data included in Other States to avoid disclosure of individual operations.

² Estimates discontinued in 2009.

³ No significant commercial production in 2007 due to freeze damage.

⁴ CA Freestone quantity and value include dried, price excludes dried.

⁵ US quantity, price, and value include dried.

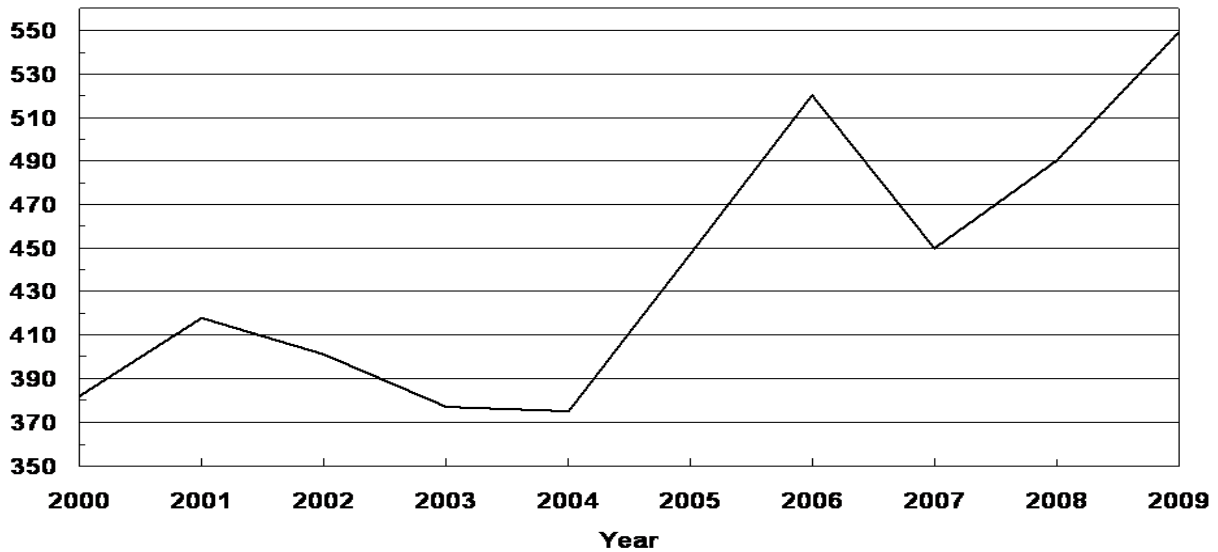
**Peaches: Processed Utilization, and Price by Use,
State, and United States, 2007-2009**

Use and State	Processed Utilization					
	Quantity			Price per Ton		
	2007	2008	2009	2007	2008	2009
	<i>Tons</i>	<i>Tons</i>	<i>Tons</i>	<i>Dollars</i>	<i>Dollars</i>	<i>Dollars</i>
Canned						
CA						
Clingstone	466,000	407,000	449,000	308.00	351.00	340.00
Oth Sts	18,820	19,280	14,740	352.00	336.00	288.00
US	484,820	426,280	463,740	310.00	350.00	338.00
Frozen						
CA						
Freestone	107,900	95,100	70,300	249.00	251.00	255.00
Oth Sts	27,500	16,320	21,700	322.00	380.00	339.00
US	135,400	111,420	92,000	264.00	270.00	275.00
Dried						
CA						
Freestone	12,700	9,500	7,100	57.00	50.00	43.00
US	12,700	9,500	7,100	57.00	50.00	43.00
Other ¹						
US	41,790	36,500	20,450	98.00	104.00	180.00

¹ Pickled, wine, brandy, juice, and baby food.

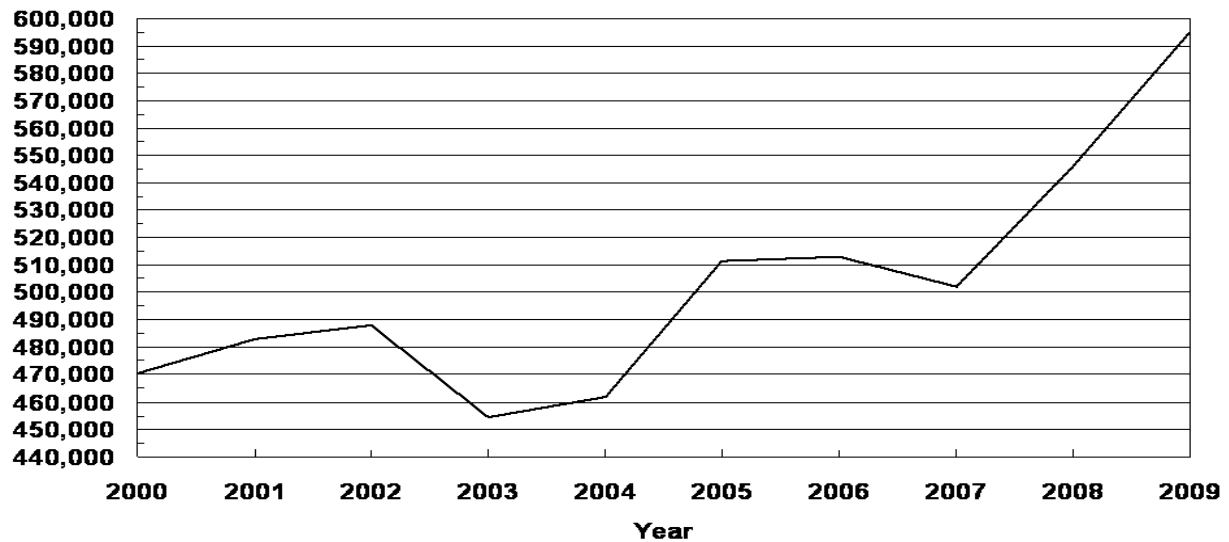
U.S. Peaches Prices Received 2000-2009

Dollars Per Ton



U.S. Peaches Value of Utilized Production 2000-2009

(000) Dollars



**All Pears: Bearing Acreage, Yield, Production, and Utilization
by State and United States, 2007-2009 ¹**

State and Year	Bearing Acreage	Yield Per Acre ²	Production		Utilization	
			Total	Utilized	Fresh	Processed
	<i>Acres</i>	<i>Tons</i>	<i>Tons</i>	<i>Tons</i>	<i>Tons</i>	<i>Tons</i>
CA						
2007	15,000	16.20	243,000	243,000		
2008	15,000	16.20	243,000	243,000		
2009	14,000	18.20	255,000	255,000		
CO ³						
2007			1,700	1,700		
2008			1,900	1,900		
2009						
CT ³						
2007			1,000	1,000		
2008			800	800		
2009						
MI						
2007	800	5.00	4,000	3,600		
2008	800	3.56	2,850	2,800		
2009	800	5.25	4,200	4,200		
NY						
2007	1,200	9.17	11,000	10,300		
2008	1,200	8.58	10,300	9,400		
2009	1,200	9.33	11,200	9,900		
OR						
2007	16,200	12.70	206,000	206,000		
2008	16,200	14.30	231,300	231,300		
2009	16,200	13.60	220,000	220,000		
PA						
2007	800	5.00	4,000	4,000		
2008	800	3.00	2,400	2,400		
2009	800	7.28	5,820	5,720		
UT ³						
2007	120	2.08	250	250		
2008	120	2.50	300	280		
2009						
WA						
2007	24,000	16.80	402,000	402,000		
2008	24,000	15.70	377,000	377,000		
2009	24,000	18.30	440,000	440,000		
US ⁴						
2007	58,640	14.90	872,950	871,850	551,960	319,890
2008	58,620	14.80	869,850	868,880	548,930	319,950
2009	57,000	16.40	936,220	934,820	604,800	330,020

¹ Missing data not published to avoid disclosure of individual operations.

² Yield is based on total production.

³ Estimates discontinued in 2009.

⁴ Processed mostly canned, but includes small quantities dried and other uses not published separately to avoid disclosure of individual operations.

**All Pears: Price and Value by State
and United States, 2007-2009¹**

State and Year	Price per Ton			Value of Production		
	Fresh	Processed Exc. Dried	All	Fresh	Processed Inc. Dried	All
	<i>Dollars</i>	<i>Dollars</i>	<i>Dollars</i>	<i>1,000 Dollars</i>	<i>1,000 Dollars</i>	<i>1,000 Dollars</i>
CA						
2007			340.00			82,691
2008			436.00			105,839
2009			366.00			93,329
CO ²						
2007			976.00			1,660
2008			602.00			1,144
2009						
CT ²						
2007			1,300.00			1,300
2008			1,340.00			1,073
2009						
MI						
2007			450.00			1,621
2008			414.00			1,158
2009			343.00			1,441
NY						
2007			497.00			5,120
2008			504.00			4,742
2009			490.00			4,854
OR						
2007			434.00			89,417
2008			473.00			109,401
2009			383.00			84,313
PA						
2007			717.00			2,869
2008			744.00			1,786
2009			711.00			4,066
UT ²						
2007			760.00			190
2008			729.00			204
2009						
WA						
2007			443.00			178,224
2008			453.00			170,734
2009			370.00			162,612
US ³						
2007	534.00	214.00	416.00	294,645	68,447	363,092
2008	589.00	227.00	456.00	323,571	72,510	396,081
2009	452.00	234.00	375.00	273,575	77,040	350,615

¹ Missing data not published to avoid disclosure of individual operations.

² Estimates discontinued in 2009.

³ Processed mostly canned, but includes small quantities dried and other uses not published separately to avoid disclosure of individual operations.

**Pears: Bearing Acreage, Yield, Production, and Utilization
by Type, State, and United States, 2007-2009 ¹**

Type, State and Year	Bearing Acreage	Yield Per Acre ²	Production		Utilization	
			Total	Utilized	Fresh	Processed
	<i>Acres</i>	<i>Tons</i>	<i>Tons</i>	<i>Tons</i>	<i>Tons</i>	<i>Tons</i>
Bartlett ³						
CA						
2007	11,000	18.30	201,000	201,000	64,000	137,000
2008	11,000	17.70	195,000	195,000	70,000	125,000
2009	10,000	20.00	200,000	200,000	70,000	130,000
OR						
2007	4,200	14.00	59,000	59,000	31,000	28,000
2008	4,200	13.40	56,300	56,300	30,000	26,300
2009	4,200	14.30	60,000	60,000	31,000	29,000
WA						
2007	11,000	14.80	163,000	163,000	66,000	97,000
2008	11,000	15.10	166,000	166,000	61,000	105,000
2009	11,000	16.60	183,000	183,000	73,000	110,000
Total						
2007	26,200	16.20	423,000	423,000	161,000	262,000
2008	26,200	15.90	417,300	417,300	161,000	256,300
2009	25,200	17.60	443,000	443,000	174,000	269,000
Other ⁴						
CA						
2007	4,000	10.50	42,000	42,000		
2008	4,000	12.00	48,000	48,000		
2009	4,000	13.80	55,000	55,000		
OR						
2007	12,000	12.30	147,000	147,000		
2008	12,000	14.60	175,000	175,000		
2009	12,000	13.30	160,000	160,000		
WA						
2007	13,000	18.40	239,000	239,000		
2008	13,000	16.20	211,000	211,000		
2009	13,000	19.80	257,000	257,000		
Total						
2007	29,000	14.80	428,000	428,000	375,500	52,500
2008	29,000	15.00	434,000	434,000	375,000	59,000
2009	29,000	16.30	472,000	472,000	415,000	57,000

¹ Missing data not published to avoid disclosure of individual operations.

² Yield is based on total production.

³ Processed mostly canned, but includes small quantities dried and other uses not published separately to avoid disclosure of individual operations.

⁴ Processed mostly juice, but includes small quantities canned and other uses not published separately to avoid disclosure of individual operations.

**Pears: Price and Value by Type, State,
and United States, 2007-2009¹**

Type, State and Year	Price per Ton			Value of Production		
	Fresh	Processed Exc. Dried	All	Fresh	Processed Inc. Dried	All
	<i>Dollars</i>	<i>Dollars</i>	<i>Dollars</i>	<i>1,000 Dollars</i>	<i>1,000 Dollars</i>	<i>1,000 Dollars</i>
Bartlett²						
CA						
2007	367.00	253.00	289.00	23,488	34,610	58,098
2008	532.00	285.00	373.00	37,240	35,508	72,748
2009	404.00	323.00	351.00	28,280	41,823	70,103
OR						
2007	517.00	219.00	375.00	16,027	6,120	22,147
2008	493.00	283.00	395.00	14,790	7,446	22,236
2009	338.00	219.00	281.00	10,478	6,360	16,838
WA						
2007	573.00	239.00	374.00	37,818	23,172	60,990
2008	598.00	234.00	368.00	36,478	24,596	61,074
2009	461.00	230.00	322.00	33,653	25,332	58,985
Total						
2007	480.00	244.00	334.00	77,333	63,902	141,235
2008	550.00	264.00	374.00	88,508	67,550	156,058
2009	416.00	273.00	329.00	72,411	73,515	145,926
Other³						
CA						
2007			586.00			24,593
2008			689.00			33,091
2009			422.00			23,226
OR						
2007			458.00			67,270
2008			498.00			87,165
2009			422.00			67,475
WA						
2007			491.00			117,234
2008			520.00			109,660
2009			403.00			103,627
Total						
2007	549.00	55.40	489.00	206,191	2,906	209,097
2008	603.00	62.80	530.00	226,213	3,703	229,916
2009	463.00	41.30	412.00	191,971	2,357	194,328

¹ Missing data not published to avoid disclosure of individual operations.

² Processed mostly canned, but includes small quantities dried and other uses not published separately to avoid disclosure of individual operations.

³ Processed mostly juice, but includes small quantities canned and other uses not published separately to avoid disclosure of individual operations.

**Hawaii Crops: Acreage Harvested, Yield, Utilized
Production, and Utilization, 2007-2009**

Crop and Year	Acreage Harvested	Yield Per Acre	Utilized Production	Utilization	
				Fresh	Processed
	<i>Acres</i>	<i>1,000 Pounds</i>	<i>1,000 Pounds</i>	<i>1,000 Pounds</i>	<i>1,000 Pounds</i>
Bananas					
2007	1,300	19.7	25,600	25,600	
2008	1,100	15.8	17,400	17,400	
2009	1,100	14.0	15,400	15,400	
Guavas					
2007	170	25.3	4,300		4,300
2008	160	21.9	3,500		3,500
2009 ¹					
Papayas					
2007	1,310	25.5	33,400	31,200	2,200
2008	1,380	24.3	33,500	31,500	2,000
2009	1,325	23.6	31,300	30,000	1,300

¹ Acreage, yield, and production estimates for 2009 will be published on May 11, 2010. Fresh and processed utilization estimates for 2009 will be published on July 7, 2010.

Hawaii Crops: Price and Value, 2007-2009

Crop and Year	Price			Value of Production		
	Fresh	Processed	All	Fresh	Processed	Total
	<i>Dollars per Pound</i>	<i>Dollars per Pound</i>	<i>Dollars per Pound</i>	<i>1,000 Dollars</i>	<i>1,000 Dollars</i>	<i>1,000 Dollars</i>
Bananas						
2007	0.410		0.410	10,496		10,496
2008	0.460		0.460	8,004		8,004
2009	0.550		0.550	8,470		8,470
Guavas						
2007		0.157	0.157		675	675
2008		0.158	0.158		553	553
2009 ¹						
Papayas						
2007	0.417	0.038	0.392	13,010	84	13,094
2008	0.455	0.030	0.430	14,333	60	14,393
2009	0.461	0.030	0.443	13,830	39	13,869

¹ Estimates for 2009 will be published on July 7, 2010.

**Apples: Unutilized Production by State
and United States, 2007-2009**

State	Unharvested Production			Harvested Not Sold		
	2007	2008	2009	2007	2008	2009
	<i>Million Pounds</i>	<i>Million Pounds</i>	<i>Million Pounds</i>	<i>Million Pounds</i>	<i>Million Pounds</i>	<i>Million Pounds</i>
AZ						
CO			1.0		1.0	
CT	1.0	0.5	1.5			
GA						
ID						
IL	1.0	4.9	3.1	0.1	1.7	3.3
IN	2.0	1.5				2.0
IA	1.0	1.0	0.8		0.1	0.1
KY	0.2	0.8				
ME	3.0	1.5	2.5	1.0	2.0	
MD		0.3			0.2	
MA	2.0	2.0	2.0		0.5	
MI			100.0			
MN	4.9	2.6	2.5	1.0	0.2	0.4
MO		0.1	0.4	0.1	0.1	0.1
NH	1.5	1.5	1.5			
NJ		4.0	1.0			
NY	10.0	30.0	30.0			
NC			15.0			
OH			2.5		15.1	3.0
PA	3.0	10.0	5.0			21.0
RI	0.2	0.1	0.1			
SC		0.6			0.1	
TN		1.1	0.2		0.2	
UT	1.0	0.4	3.5			
VT	5.0	3.0	4.0			
VA						
WV	3.0	3.0	1.0		1.0	
WI	2.0	2.5	5.0	1.0		2.0
US	40.8	71.4	182.6	3.2	22.2	31.9

**Miscellaneous Crops: Unutilized Production
by State and United States, 2007-2009**

Crop and State	Unharvested Production			Harvested Not Sold		
	2007	2008	2009	2007	2008	2009
	<i>Tons</i>	<i>Tons</i>	<i>Tons</i>	<i>Tons</i>	<i>Tons</i>	<i>Tons</i>
Peaches						
AL	400	300	800	100	700	200
AR		60	350	5	140	30
CO	2,000		1,000		1,000	1,000
CT			100			
GA		1,000	400	1,000	2,000	1,600
ID		160		140	420	900
IL	10	420	430		350	200
KY ¹		100				
MD	100	10				
MA	50		50			
MI	1,400	300	500			
NJ	3,200	6,500	2,000		1,500	
NY		200	100		100	
NC		300	40		50	10
OH	50	50	140	50	50	10
OK ¹	100	200				
OR ¹	300	100				
PA						100
SC	100	2,000	1,000	400	1,000	8,000
TX	1,350	1,430	800	150	170	300
UT	60	270	200	40	230	100
VA	50	100	290			500
WV	100	400		100	200	10
US	9,270	13,900	8,200	1,985	7,910	12,960
	<i>Million Pounds</i>	<i>Million Pounds</i>	<i>Million Pounds</i>	<i>Million Pounds</i>	<i>Million Pounds</i>	<i>Million Pounds</i>
Cherries (Tart)						
MI	3.0		15.0			3.0
NY		0.2	0.5			0.6
UT	1.0	1.0	12.1			0.9
WA				0.1		0.3
WI				0.4		
US	4.0	1.2	27.6	0.5		4.8

¹ Estimates discontinued in 2009.

**Miscellaneous Crops: Unutilized Production
by State and United States, 2007-2009**

Crop and State	Unharvested Production			Harvested Not Sold		
	2007	2008	2009	2007	2008	2009
	<i>Tons</i>	<i>Tons</i>	<i>Tons</i>	<i>Tons</i>	<i>Tons</i>	<i>Tons</i>
Apricots						
CA		4,100				
UT		10			20	10
US		4,110	20		20	10
Cherries (Sweet)						
CA				3,200	3,200	3,000
ID			2,500		100	800
MI		200	100			
MT	140	10	1,200	120	100	135
NY	10	130	250			50
OR	1,000	3,600	11,000			
UT			180			30
WA			35,000			
US	1,150	3,940	50,230	3,320	3,400	4,015
Grapes						
AR			100			10
MI			18,100			
NY			3,000			
OH		310	560			
PA		13,000	2,000			
TX	800	200	3,150			
VA		70	600	200	130	20
US	800	13,580	27,510	200	130	30
Kiwifruit						
CA				800	1,000	900
Pears						
MI	400	50				
NY	700	900	1,300			
PA						100
UT ¹		10			10	
US	1,100	960	1,300		10	100
Prunes & Plums						
ID	80				20	
MI	1,100		700			200
US	1,180		700		20	200
Prunes						
CA ²	500			1,500		

¹ Estimates discontinued in 2009.

² CA prunes are on a dried basis.

**Berries: Unutilized Production by State
and United States, 2007-2009**

Crop and State	Unharvested Production			Harvested Not Sold		
	2007	2008	2009	2007	2008	2009
	<i>1,000 Pounds</i>	<i>1,000 Pounds</i>	<i>1,000 Pounds</i>	<i>1,000 Pounds</i>	<i>1,000 Pounds</i>	<i>1,000 Pounds</i>
Black Raspberries OR	50		300			
Cultivated Blueberries						
AL	50	40	100			
FL			400			200
IN	200					
NY	200	200	200			100
NC			1,000			300
OR			500			
US	450	240	2,200			600
Boysenberries OR	500	170	200			
Cultivated Blackberries (OR)						
Marion	3,000	800	200			
Other	2,000	1,300	1,000			
All	5,000	2,100	1,200			

**Apples for Fresh Use: Prices Received, United States
July 2005 - December 2009¹**

Year	Jul	Aug	Sep	Oct	Nov	Dec	Jan ²	Feb	Mar	Apr	May	Jun
	<i>Dollars Per Pound</i>	<i>Dollars Per Pound</i>	<i>Dollars Per Pound</i>	<i>Dollars Per Pound</i>	<i>Dollars Per Pound</i>	<i>Dollars Per Pound</i>	<i>Dollars Per Pound</i>	<i>Dollars Per Pound</i>	<i>Dollars Per Pound</i>	<i>Dollars Per Pound</i>	<i>Dollars Per Pound</i>	<i>Dollars Per Pound</i>
2005	0.098	0.177	0.264	0.257	0.255	0.217	0.217	0.206	0.199	0.193	0.189	0.228
2006	0.283	0.360	0.382	0.347	0.348	0.287	0.286	0.285	0.284	0.284	0.294	0.292
2007	0.305	0.340	0.403	0.379	0.403	0.350	0.355	0.348	0.344	0.338	0.362	0.412
2008	0.446	0.537	0.506	0.425	0.360	0.293	0.272	0.237	0.215	0.204	0.187	0.181
2009	0.178	0.256	0.335	0.310	0.281	0.272						

¹ Equivalent packinghouse-door returns for CA, MI, NY, and WA; price at point of first sale for other States.

² January for the following year.

**Apples for Fresh Use: Monthly Average Prices, by State and United States,
July 2008 - August 2009^{1,2}**

State	2008						2009
	Jul	Aug	Sep	Oct	Nov	Dec	Jan
	<i>Dollars per Pound</i>	<i>Dollars per Pound</i>	<i>Dollars per Pound</i>	<i>Dollars per Pound</i>	<i>Dollars per Pound</i>	<i>Dollars per Pound</i>	<i>Dollars per Pound</i>
CA		0.560	0.501	0.222	0.185	0.227	
MI		0.490	0.500	0.445	0.370	0.325	0.290
NY			0.433	0.468	0.366	0.295	0.273
OH	0.430	0.520	0.480	0.600	0.510	0.450	0.390
PA		0.496	0.519	0.472	0.358	0.259	0.267
VA			0.350	0.340	0.330	0.330	0.320
WA	0.446	0.530	0.530	0.425	0.360	0.292	0.269
US	0.446	0.537	0.506	0.425	0.360	0.293	0.272
State	2009						
	Feb	Mar	Apr	May	Jun	Jul	Aug
	<i>Dollars per Pound</i>	<i>Dollars per Pound</i>	<i>Dollars per Pound</i>	<i>Dollars per Pound</i>	<i>Dollars per Pound</i>	<i>Dollars per Pound</i>	<i>Dollars per Pound</i>
CA							0.586
MI	0.285	0.280	0.260	0.245			
NY	0.263	0.258	0.242	0.239	0.238		
OH	0.425	0.410	0.425	0.460	0.500	0.390	0.520
PA	0.328	0.300	0.298				
VA	0.320	0.320	0.320				
WA	0.228	0.204	0.195	0.181	0.176	0.171	0.187
US	0.237	0.215	0.204	0.187	0.181	0.178	0.256

¹ Equivalent packinghouse-door returns for CA, MI, NY, and WA; price at point of first sale for Other States.

² Prices for July and August 2009 are preliminary for all States and the U.S. except WA. These two months represent the start of the 2009 crop marketing season in most States, but in WA they are the final months of the 2008 crop marketing season.

**Peaches for Fresh Use: Monthly Prices Received,
United States, May 2005-September 2009¹**

Year	May	Jun	Jul	Aug	Sep
	<i>Dollars per Ton</i>	<i>Dollars per Ton</i>	<i>Dollars per Ton</i>	<i>Dollars per Ton</i>	<i>Dollars per Ton</i>
2005	756	596	576	743	622
2006	(²)	809	721	746	589
2007	937	562	579	593	563
2008	960	537	485	510	468
2009	846	822	641	691	655

¹ Equivalent packinghouse-door returns for CA and WA; price at point of first sale for Other States.

² Insufficient sales to establish a price.

**Pears for Fresh Use: Monthly Prices Received,
United States, July 2005 - December 2009¹**

Year	Jul	Aug	Sep	Oct	Nov	Dec	Jan ²	Feb	Mar	Apr	May	Jun
	<i>Dollars Per Ton</i>	<i>Dollars Per Ton</i>	<i>Dollars Per Ton</i>	<i>Dollars Per Ton</i>	<i>Dollars Per Ton</i>	<i>Dollars Per Ton</i>	<i>Dollars Per Ton</i>	<i>Dollars Per Ton</i>	<i>Dollars Per Ton</i>	<i>Dollars Per Ton</i>	<i>Dollars Per Ton</i>	<i>Dollars Per Ton</i>
2005	639	583	541	440	451	423	404	392	339	355	419	596
2006	759	286	288	568	573	563	541	517	537	597	651	687
2007	584	374	380	526	514	557	560	552	537	527	525	654
2008	638	546	543	628	582	574	539	473	452	462	518	642
2009	531	430	408	504	449	416						

¹ Equivalent packinghouse-door returns for CA, NY, and WA; price at point of first sale for Other States.

² January for the following year.

**Grapes for Fresh Use: Monthly Prices Received,
United States, May 2005 - December 2009**

Year	May	Jun	Jul	Aug	Sep	Oct	Nov	Dec
	<i>Dollars Per Ton</i>	<i>Dollars Per Ton</i>	<i>Dollars Per Ton</i>	<i>Dollars Per Ton</i>	<i>Dollars Per Ton</i>	<i>Dollars Per Ton</i>	<i>Dollars Per Ton</i>	<i>Dollars Per Ton</i>
2005	1,010	910	530	530	610	600	490	390
2006	(¹)	2,420	1,030	880	910	830	930	1,310
2007	(¹)	770	660	680	790	940	1,200	1,710
2008	420	590	660	530	480	370	360	300
2009	1,720	1,400	740	390	580	840	800	1,320

¹ Insufficient sales to establish a price.

**Pears: Equivalent On-tree Returns,
by State and United States, 2007-2009**

State and Variety	Fresh			Processed			All		
	2007	2008	2009	2007	2008	2009	2007	2008	2009
	<i>Dollars per Ton</i>	<i>Dollars per Ton</i>	<i>Dollars per Ton</i>	<i>Dollars per Ton</i>	<i>Dollars per Ton</i>	<i>Dollars per Ton</i>	<i>Dollars per Ton</i>	<i>Dollars per Ton</i>	<i>Dollars per Ton</i>
Bartlett									
CA	301	466	340	184	218	258	221	307	287
OR	417	452	238	119	126	119	276	300	180
WA	473	481	361	139	137	130	274	263	222
US	394	469	331	160	175	191	249	289	246
Other ¹									
US	383	496	343						

¹ Pears other than Bartlett; missing data unavailable or not published to avoid disclosure.

**Apricots and Plums: Equivalent Returns,
California, 2007-2009**

	Equivalent First Delivery Point Returns			Equivalent On-tree Returns		
	2007	2008	2009	2007	2008	2009
	Plums					
	<i>Dollars per Ton</i>	<i>Dollars per Ton</i>	<i>Dollars per Ton</i>	<i>Dollars per Ton</i>	<i>Dollars per Ton</i>	<i>Dollars per Ton</i>
All Sales	668	356	514	585	273	394
	Apricots					
	<i>Dollars per Ton</i>	<i>Dollars per Ton</i>	<i>Dollars per Ton</i>	<i>Dollars per Ton</i>	<i>Dollars per Ton</i>	<i>Dollars per Ton</i>
Fresh	742	775	1,390	575	605	1,033
Processing	307	341	373	176	210	249
All Sales	431	472	672	290	329	481

**Grapes: Equivalent First Delivery Point Returns,
by Utilization and Variety Group, California, 2007-2009 ¹**

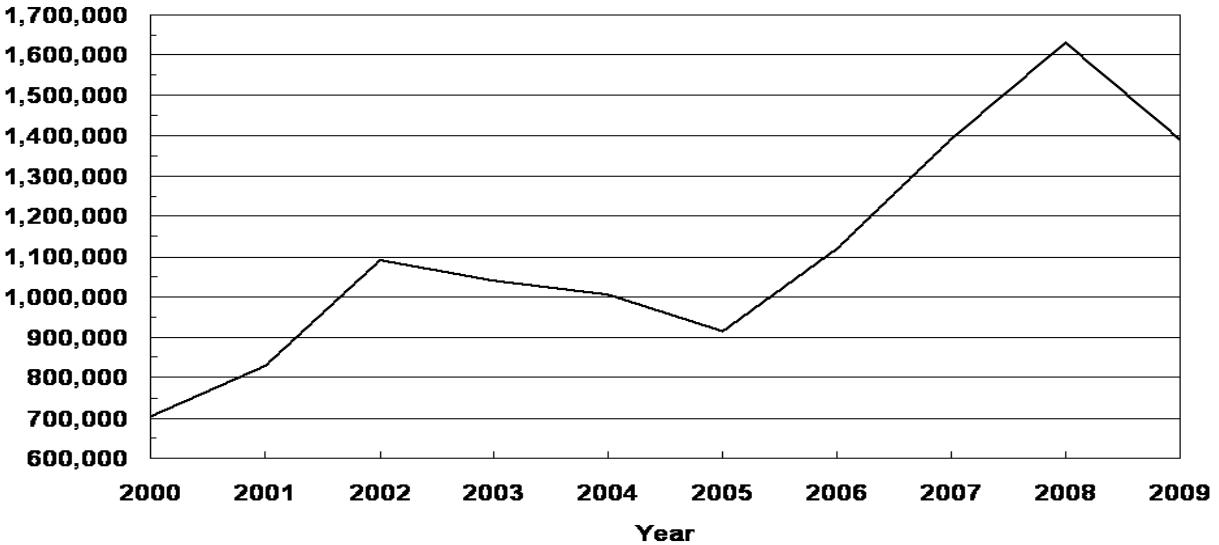
Variety and Utilization	2007	2008	2009
	<i>Dollars per Ton</i>	<i>Dollars per Ton</i>	<i>Dollars per Ton</i>
Raisin Varieties Dried by Variety or Type			
Natural Thompson Seedless	1,010	1,140	
Natural Muscats	(²)	(²)	
Natural Sultanas	930	1,070	
Natural Zante Currents	990	1,210	
Dehydrated, All Types	1,530	1,630	

¹ Missing data are not available.

² Insufficient sales to establish a price.

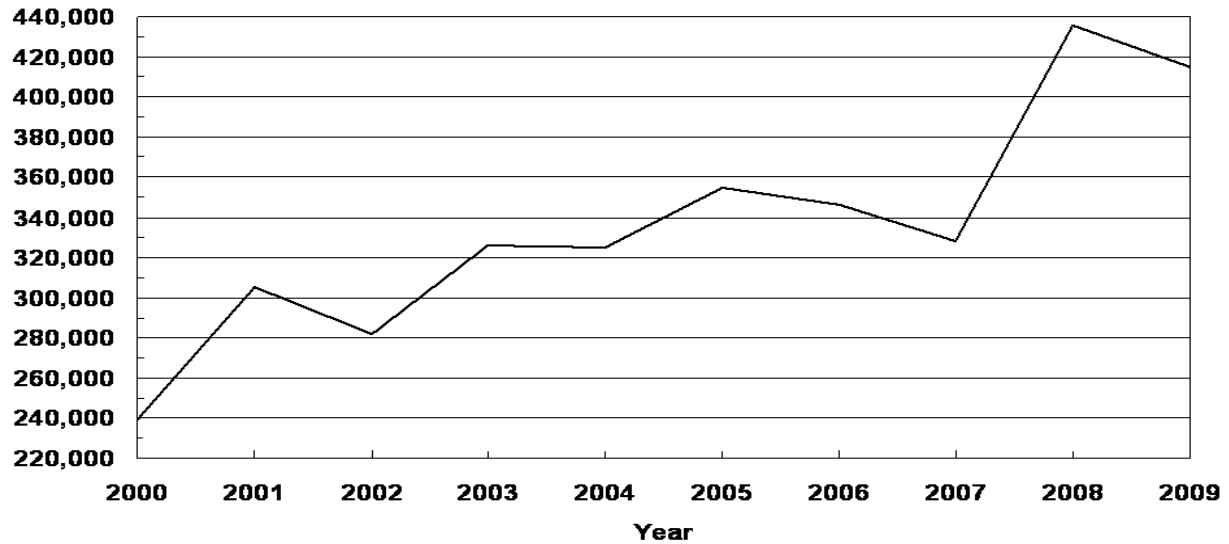
California Almonds Utilized Production 2000-2009

(000) Pounds
Shelled Basis



California Walnuts (English) Utilized Production 2000-2009

Tons
In-Shell Basis



**Tree Nuts: Acreage, Yield, Production, Price and Value
by Crop, and State 2007-2009**

Crop, State, and Year	Bearing Acreage	Yield per Acre ¹	Utilized Production	Price per Unit	Value of Utilized Production
	<i>Acres</i>	<i>Pounds</i>	<i>1,000 Pounds</i>	<i>Dollars per Pound</i>	<i>1,000 Dollars</i>
Almonds ² (Shelled Basis) ³					
CA					
2007	640,000	2,170	1,390,000	1.750	2,401,875
2008	680,000	2,400	1,630,000	1.450	2,343,200
2009	710,000	1,960	1,390,000	1.300	1,780,350
	<i>Acres</i>	<i>Tons</i>	<i>Tons</i>	<i>Dollars per Ton</i>	<i>1,000 Dollars</i>
Hazelnuts (In-Shell Basis)					
OR					
2007	28,600	1.29	37,000	2,040.00	75,480
2008	28,400	1.13	32,000	1,620.00	51,840
2009	28,400	1.65	47,000	1,590.00	74,730
	<i>Acres</i>	<i>Pounds</i>	<i>1,000 Pounds</i>	<i>Dollars per Pound</i>	<i>1,000 Dollars</i>
Macadamia Nuts (In-Shell Basis)					
HI					
2007	15,000	2,730	41,000	0.600	24,600
2008	15,000	3,330	50,000	0.670	33,500
2009	15,000	3,070	46,000	0.670	30,820
	<i>Acres</i>	<i>Pounds</i>	<i>1,000 Pounds</i>	<i>Dollars per Pound</i>	<i>1,000 Dollars</i>
Pistachios (In-Shell Basis)					
CA					
2007	115,000	3,620	416,000	1.410	586,560
2008	118,000	2,360	278,000	2.050	569,900
2009	126,000	3,060	386,000	2.040	787,440
	<i>Acres</i>	<i>Tons</i>	<i>Tons</i>	<i>Dollars per Ton</i>	<i>1,000 Dollars</i>
Walnuts (English) (In-Shell Basis)					
CA					
2007	218,000	1.50	328,000	2,290.00	751,120
2008	223,000	1.96	436,000	1,280.00	558,080
2009 ⁴	223,000	1.86	415,000		

¹ Yield is based on utilized production.

² Price and value are based on the edible portion of the crop only. Production includes inedible quantities of no value as follows: 2007 - 17.5 million pounds; 2008 - 14.0 million pounds; 2009 - 20.5 million pounds.

³ Shelling ratios are: 2007 - 0.573; 2008 - 0.578; 2009 - 0.598.

⁴ Price and value for 2009 will be published on July 7, 2010.

**Tree Nuts: Utilization and Meat Production
by Crop, State, and United States, 2007-2009**

Crop, State, and Year	Utilized Production		Meat Production of Nuts Sold Shelled
	Sold In-Shell	Sold Shelled ¹	
	<i>Tons</i>	<i>Tons</i>	<i>Tons</i>
Hazelnuts			
OR			
2007	24,900	12,100	4,800
2008	22,400	9,600	4,000
2009 ²			
	<i>1,000 Pounds</i>	<i>1,000 Pounds</i>	<i>1,000 Pounds</i>
Pecans			
US			
2007	69,305	318,000	148,000
2008	42,001	152,079	73,910
2009 ²			
	<i>1,000 Pounds</i>	<i>1,000 Pounds</i>	<i>1,000 Pounds</i>
Pistachios			
CA			
2007	333,000	83,000	41,300
2008	231,000	47,000	22,890
2009	320,000	66,000	31,700
	<i>1,000 Pounds</i>	<i>1,000 Pounds</i>	<i>1,000 Pounds</i>
Walnuts (English)			
CA			
2007	66,000	262,000	112,000
2008	95,000	341,000	155,000
2009 ²			

¹ In-shell basis.

² Estimates for 2009 will be published on July 7, 2010.

**Pecans: Production
by Variety, State, and United States, 2007-2009**

Variety and State	Utilized Production (In-Shell Basis)		
	2007	2008	2009
	<i>1,000 Pounds</i>	<i>1,000 Pounds</i>	<i>1,000 Pounds</i>
Improved Varieties ¹			
AL	10,000	7,400	8,600
AZ	23,000	17,500	20,000
AR	1,500	1,000	1,500
CA	4,400	3,750	3,840
FL	1,700	1,400	1,700
GA	135,000	66,000	82,000
LA	3,000	1,000	2,500
MS	2,200	900	2,000
MO	2	110	200
NM	74,000	43,000	70,000
NC ²	160	600	
OK	3,000	1,000	6,000
SC	1,500	3,000	3,300
TX	44,000	20,000	20,000
US	303,462	166,660	221,640
Native and Seedling			
AL	2,000	600	1,400
AR	800	500	800
FL	200	300	400
GA	15,000	4,000	3,000
KS	500	1,900	1,000
LA	11,000	4,000	5,500
MS	800	600	500
MO	3	1,020	1,560
NC ²	40	100	
OK	27,000	4,000	14,000
SC	500	400	700
TX	26,000	10,000	40,000
US	83,843	27,420	68,860
All Pecans			
AL	12,000	8,000	10,000
AZ	23,000	17,500	20,000
AR	2,300	1,500	2,300
CA	4,400	3,750	3,840
FL	1,900	1,700	2,100
GA	150,000	70,000	85,000
KS	500	1,900	1,000
LA	14,000	5,000	8,000
MS	3,000	1,500	2,500
MO	5	1,130	1,760
NM	74,000	43,000	70,000
NC ²	200	700	
OK	30,000	5,000	20,000
SC	2,000	3,400	4,000
TX	70,000	30,000	60,000
US	387,305	194,080	290,500

¹ Budded, grafted, or topworked varieties.

² Estimates discontinued in 2009.

**Pecans: Price and Value
by Variety, State, and United States, 2007-2009**

Variety and State	Price per Pound			Value of Utilized Production		
	2007	2008	2009	2007	2008	2009
	<i>Dollars</i>	<i>Dollars</i>	<i>Dollars</i>	<i>1,000 Dollars</i>	<i>1,000 Dollars</i>	<i>1,000 Dollars</i>
Improved Varieties ¹						
AL	0.890	1.270	1.070	8,900	9,398	9,202
AZ	1.600	1.450	1.900	36,800	25,375	38,000
AR	1.090	1.360	1.020	1,635	1,360	1,530
CA	1.780	1.310	1.450	7,832	4,913	5,568
FL	1.000	2.000	1.320	1,700	2,800	2,244
GA	1.100	1.470	1.340	148,500	97,020	109,880
LA	1.200	1.350	1.400	3,600	1,350	3,500
MS	1.150	1.300	1.200	2,530	1,170	2,400
MO	1.200	1.400	1.750	2	154	350
NM	1.300	1.450	1.900	96,200	62,350	133,000
NC ²	1.510	1.300		242	780	
OK	1.350	1.600	1.750	4,050	1,600	10,500
SC	1.160	1.210	1.450	1,740	3,630	4,785
TX	1.350	1.220	1.460	59,400	24,400	29,200
US	1.230	1.420	1.580	373,131	236,300	350,159
Native and Seedling						
AL	0.660	0.860	0.810	1,320	516	1,134
AR	0.760	1.020	0.930	608	510	744
FL	0.700	1.100	1.210	140	330	484
GA	0.720	1.000	0.840	10,800	4,000	2,520
KS	0.900	1.000	1.300	450	1,900	1,300
LA	0.700	0.850	0.750	7,700	3,400	4,125
MS	0.700	1.000	0.700	560	600	350
MO	1.000	1.050	1.050	3	1,071	1,638
NC ²	0.810	0.600		32	60	
OK	0.750	0.800	0.700	20,250	3,200	9,800
SC	0.900	0.650	0.750	450	260	525
TX	0.700	0.825	0.630	18,200	8,250	25,200
US	0.722	0.879	0.694	60,513	24,097	47,820
All Pecans						
AL	0.852	1.240	1.030	10,220	9,914	10,336
AZ	1.600	1.450	1.900	36,800	25,375	38,000
AR	0.975	1.250	0.989	2,243	1,870	2,274
CA	1.780	1.310	1.450	7,832	4,913	5,568
FL	0.968	1.840	1.300	1,840	3,130	2,728
GA	1.060	1.440	1.320	159,300	101,020	112,400
KS	0.900	1.000	1.300	450	1,900	1,300
LA	0.807	0.950	0.953	11,300	4,750	7,625
MS	1.030	1.180	1.100	3,090	1,770	2,750
MO	1.000	1.080	1.130	5	1,225	1,988
NM	1.300	1.450	1.900	96,200	62,350	133,000
NC ²	1.370			274	840	
OK	0.810	0.960	1.020	24,300	4,800	20,300
SC	1.100	1.140	1.330	2,190	3,890	5,310
TX	1.110	1.090	0.907	77,600	32,650	54,400
US	1.120	1.340	1.370	433,644	260,397	397,979

¹ Budded, grafted, or topworked varieties.

² Estimates discontinued in 2009.

Definition of Terms

Apples, Commercial Crop refers to orchards of 100 or more bearing age trees.

Bearing Acreage - An orchard, grove, or vineyard is considered bearing when it reaches an age when it can normally be expected to produce a commercially significant quantity of the crop. Bearing age is a function of many factors including variety, rootstock, year planted, etc. Bearing acreage is primarily based upon periodic orchard surveys. In non-survey years, bearing acreage is based on trends, county extension service data, end-of-year production surveys, and other indications.

Prices are a marketing year average for all methods of sale. For a crop sold for both fresh market and processing, the **Marketing Year Average Price (MYA)** is a weighted average of the fresh and processing price.

Prices for fresh fruit are the average prices producers receive at the point of first sale. This is commonly referred to as the **average price as sold**. Since the point of first sale is not the same for all producers, prices for the various methods of sale are weighted by the quantity sold. For example, in a given State, part of the fruit is sold free on board (F.O.B.) packed by growers, part is sold as bulk fruit at the packinghouse door, and some is sold retail at roadside stands. The fresh fruit **average price as sold** is a weighted average of the average price for each method of sale. The exception is fresh fruit sales in California, Washington, and New York (apples only) which are equivalent returns at packinghouse door. The equivalent packinghouse returns represent adjusted prices.

F.O.B. packed prices are adjusted to an equivalent incoming packinghouse door price by subtracting all costs that accumulate between the incoming packinghouse door and the F.O.B. price. These costs include grading, packing, inspecting fees, selling, and other costs.

Prices for fruit sold for processing are equivalent returns for fruit delivered to the processing plant door except for cranberries, California olives, and freestone peaches, which are priced at the first delivery point.

Crop value estimates in this report cover the marketing season or crop year and should not be confused with cash receipts from these crops which are on a calendar year.

Total Production is the quantity actually harvested plus quantities which would have been acceptable for fresh market or processing but were not harvested because of economic or natural reasons.

Unutilized Production is the difference between total and utilized production which is marketable fruit not harvested for economic or natural reasons and harvested fruit not sold or utilized.

Harvested not sold is fruit of marketable quality that was picked but not sold for various reasons. Harvested not sold amounts up to 2 percent of total production are considered normal seasonal losses and are excluded from total production. Reported values are above and beyond these normal seasonal losses.

Unharvested Production is marketable fruit produced, but not harvested for various reasons. Unharvested amounts up to 2 percent of total production are considered normal seasonal losses and are excluded from total production. Reported values are above and beyond these normal seasonal losses.

Utilization refers to first utilization, not necessarily final utilization. For example, frozen fruit includes some fruit that may be later used for making preserves. Grade-outs for fresh market fruit which are processed are included in the processing quantity. Fruit graded-out from canning or freezing and utilized for juice is included with juice.

Utilized Production is the amount sold plus the quantities used at home or held in storage.

Yield per Acre is based on total production which includes unharvested production and fruit harvested but not sold due to marketing conditions.

State Value of Utilized Production and MYA Price Computations

The following procedure is used to compute State Values of Utilized Production and MYA Prices:

Fresh Market Value = Fresh Market MYA
Times
Fresh Market Utilization

Process Market Value = Process Market MYA
Times
Process Market Utilization

"All" Sales Value = Fresh Market Value
Plus
Process Market Value

"All" Sales MYA = "All" Sales Value
Divided By
"All" Sales Utilization

For commodities with components not identified by market channel, substitute breakdown name for fresh/processing market and use the same procedure.

U.S. MYA Price Computations

The following procedure is used to compute the U.S. MYA Prices:

Fresh Market MYA = Fresh Market Value For All States
Divided By
Fresh Market Utilization For All States

Process Market MYA = Process Market Value For All States
Divided By
Process Market Utilization For All States

"All" Sales MYA = Sales Value For All States
Divided By
Sales Utilization For All States

Marketing Seasons for Noncitrus Fruits ¹

Apples

Eastern States, excluding GA, NJ, and SC	August - June
Central States, excluding IA, KY, MN, MO, TN, and WI	July - May
Western States, excluding AZ	August - June
All Other States	August - December

Apricots

CA	May 15 - July 5
UT	June 10 - August 15
WA	June 20 - August 1

Avocados

CA	November 1 - October 31
FL	June 20 - March 1
HI	January 1 - December 31

Bananas January 1 - December 31

Cherries, Sweet

CA	April 25 - June 15
MT	July 20 - August 20
All Other States	June - July

Cherries, Tart June 25 - August 15

Cranberries September 15 - January 1

Dates August 15 - March 15

Figs June 5 - October 30

Grapes

Table (CA)	May 25 - July 20
Raisin (CA)	June 5 - July 31
Wine (CA and WA)	August 15 - December 15
Juice (WA)	September 15 - November 1
All Other States	July - October

Guavas January 1 - December 31

Kiwifruit October 1 - May 31

¹See footnote on next page.

Marketing Seasons for Noncitrus Fruits ¹ (continued)

Nectarines	April 30 - October 15
Olives	
Fresh, Canned, and Other Processing	August 1 - July 31
Crushed for Oil	December 1 - November 30
Papayas January 1 - December 31	
Peaches	
Clingstone (CA)	July 10 - September 15
Freestone (CA)	April 20 - October 10
GA and SC	May - August
All Other States	July - September
Pears	
Bartlett (CA, OR, and WA)	July - December
Other (CA, OR, and WA)	July - June
All Other States	August - November
Pineapples	January 1 - December 31
Plums (CA)	May 15 - October 20
Prunes, Dried (CA)	August 20 - April 15
Prunes and Plums	
Fresh and Canning (ID, MI, OR, WA)	August 15 - October 15

Marketing Seasons for Tree Nuts ¹

Almonds	August 5 - November 15
Hazelnuts	October 1 - November 30
Macadamia Nuts	July 1 - June 30
Pecans	October 1 - March 31
Pistachios	September 30 - January 30
Walnuts	September 15 - November 10

¹ For detail by States, see Agricultural Handbook No. 729, "Fruits and Tree Nuts: Blooming, Harvesting, and Marketing Dates," Dec 2006.

Reliability of January Noncitrus Fruit Production Estimates

Reliability: To assist users in evaluating the reliability of the January noncitrus fruit total production estimates, the "Root Mean Square Error," a statistical measure based on past performance, is computed. The deviation between the first January total production estimate and the final estimate is expressed as a percentage of the final estimate. The average of squared percentage deviations for the latest 20-year period is computed. The square root of the average becomes statistically the "Root Mean Square Error." Probability statements can be made concerning expected differences in the current estimate relative to the final end-of-season estimate, assuming that factors affecting this year's estimate are not different from those influencing recent years. For example, the "Root Mean Square Error" for the January apple total production estimate is 2.9 percent. This means that chances are 2 out of 3 that the current production estimate will not be above or below the final estimate by more than 2.9 percent. Chances are 9 out of 10 (90 percent confidence level) that the difference will not exceed 4.9 percent.

Also, shown in the following table is a 20-year record for selected crops of the differences between the first January total production estimate and the final estimate. Using apples again as an example, changes between the first January estimate and the final estimate during the last 20 years have averaged 113.6 thousand tons, ranging from 6.1 thousand tons to 351.4 thousand tons. The first January estimate has been below the final estimate 6 times and above 14 times. This does not imply that the January estimate this year is likely to understate or overstate the final production.

Reliability of Selected Noncitrus Fruit Estimates

Crop	Unit	Root Mean Square Error		20-Year Record of Differences Between Initial Estimate and Final Estimate				
		Percent	90 Percent Confidence Interval	Quantity			Years	
				Average	Smallest	Largest	Below Final	Above Final
				<i>1,000</i>	<i>1,000</i>	<i>1,000</i>	<i>Number</i>	<i>Number</i>
Apples	Tons	2.9	4.9	113.6	6.1	351.4	6	14
Grapes	Tons	3.9	6.8	199.0	8.6	838.8	17	3
Peaches	Tons	1.4	2.4	13.8	0.2	29.9	11	9
Pears	Tons	3.1	5.4	21.6	1.0	63.9	14	6

Information Contacts

Listed below are the commodity statisticians in the Crops Branch of the National Agricultural Statistics Service to contact for additional information.

Lance Honig, Chief (202) 720-2127

Field Crops Section

Jacqueline Moore, Head (202) 720-2127
 Suzanne Avilla - Peanuts, Rice (202) 720-7688
 Shiela Corley - Cotton, Cotton Ginnings (202) 720-5944
 Bryan Durham - Hay, Oats, Sorghum (202) 690-3234
 Anthony Prillaman - Corn, Proso Millet, Flaxseed (202) 720-9526
 Nick Schauer - Wheat, Rye (202) 720-8068
 Julie Schmidt - Crop Weather, Barley, Sugar Crops (202) 720-7621
 Travis Thorson - Soybeans, Sunflower, Other Oilseeds (202) 720-7369

Fruits, Vegetables & Special Crops Section

Jorge Garcia-Pratts, Head (202) 720-2127
 Steve Maliszewski - Citrus, Coffee, Grapes, Tropical Fruits (202) 720-5412
 Debbie Flippin - Fresh and Processing Vegetables,
 Onions, Strawberries (202) 720-2157
 Fred Granja - Apples, Apricots, Cherries, Plums,
 Prunes, Tobacco (202) 720-4288
 Michael Jacobsen - Berries, Cranberries (202) 720-9085
 Dawn Keen - Floriculture, Maple Syrup, Nursery,
 Tree Nuts (202) 720-4215
 Tierra Mobley - Potatoes, Sweet Potatoes (202) 720-4285
 Dan Norris - Austrian Winter Peas, Dry Edible Peas,
 Lentils, Mint, Mushrooms, Peaches, Pears,
 Wrinkled Seed Peas, Dry Beans (202) 720-3250
 Kim Ritchie - Hops (360) 902-1940

ACCESS TO REPORTS!!

For your convenience, there are several ways to obtain NASS reports, data products, and services:

INTERNET ACCESS

All NASS reports are available free of charge. For free access, connect to the Internet and go to the NASS Home Page at: www.nass.usda.gov.

E-MAIL SUBSCRIPTION

All NASS reports are available by subscription free of charge direct to your e-mail address. Starting with the NASS Home Page at www.nass.usda.gov, under the right navigation, *Receive reports by Email*, click on **National** or **State**. Follow the instructions on the screen.

PRINTED REPORTS OR DATA PRODUCTS

CALL OUR TOLL-FREE ORDER DESK: 800-999-6779 (U.S. and Canada)
Other areas, please call 703-605-6220 FAX: 703-605-6880
(Visa, MasterCard, check, or money order acceptable for payment.)

ASSISTANCE

For **assistance** with general agricultural statistics or further information about NASS or its products or services, contact the **Agricultural Statistics Hotline** at **800-727-9540**, 7:30 a.m. to 4:00 p.m. ET, or e-mail: nass@nass.usda.gov.

The U.S. Department of Agriculture (USDA) prohibits discrimination in all its programs and activities on the basis of race, color, national origin, age, disability, and where applicable, sex, marital status, familial status, parental status, religion, sexual orientation, genetic information, political beliefs, reprisal, or because all or a part of an individual's income is derived from any public assistance program. (Not all prohibited bases apply to all programs.) Persons with disabilities who require alternative means for communication of program information (Braille, large print, audiotape, etc.) should contact USDA's TARGET Center at (202) 720-2600 (voice and TDD).

To file a complaint of discrimination, write to USDA, Director, Office of Civil Rights, 1400 Independence Avenue, S.W., Washington, D.C. 20250-9410, or call (800) 795-3272 (voice) or (202) 720-6382 (TDD). USDA is an equal opportunity provider and employer.



Sustainable Agriculture

The Key to Health and Prosperity

February 18 – 19, 2010

Crystal Gateway Marriott Hotel
1700 Jefferson Davis Highway
Arlington, Virginia

www.usda.gov/oce/forum

Early Bird Registration \$350 until January 15, 2010 * \$375 after January 15

Topical Sessions Cover:

- *Rural Communities
- *Nutrition
- *Risk Management
- *Conservation
- *Organics & Sustainability
- *Climate Change
- *Food Security & Safety
- *World Commerce
- * Energy

and the traditional Food Price, Farm Income, and Commodity Outlook Sessions