



United States
Department of
Agriculture

National
Agricultural
Statistics
Service



ISSN: 1948-2698

Noncitrus Fruits and Nuts 2013 Summary

July 2014

USDA



Contents

Noncitrus Fruit Highlights	6
Noncitrus Fruits and Nuts Bearing Acreage, Yield, Production, Price, and Value by Crop - United States: 2011-2013.....	8
Fruits and Nuts Bearing Acreage by Type – United States: 2011-2013	11
Noncitrus Fruits Utilized Production by Type of Utilization – United States: 2011-2013.....	11
Noncitrus Fruits Utilized Production – United States: 2004-2013 Chart.....	12
Noncitrus Fruits Value of Utilized Production – United States: 2004-2013 Chart.....	12
Noncitrus Fruits Utilized Production – United States: 2013 Chart.....	13
Noncitrus Fruits Value of Utilized Production – United States: 2013 Chart.....	13
Commercial Apple Bearing Acreage, Yield, Production, Price, and Value – States and United States: 2011-2013.....	14
Commercial Apple Fresh Market Utilization, Price, and Value – States and United States: 2011-2013	17
Commercial Apple Processed Utilization, Price, and Value – States and United States: 2011-2013.....	19
Commercial Apple Processed Utilization and Price by Use – States and United States: 2011-2013	21
Unutilized Apple Production – States and United States: 2011-2013	22
Commercial Apple Bearing Acreage – United States: 2004-2013 Chart.....	23
Commercial Apple Utilized Production – United States: 2004-2013 Chart	23
Other Fruit Bearing Acreage, Yield, Production, Utilization, Price, and Value by Crop – States and United States: 2011-2013.....	24
Other Unutilized Fruit Production by Crop – States and United States: 2011-2013	30
Other Processed Fruit Utilization and Price by Crop and Use – States and United States: 2011-2013.....	30
Olive Production by Variety – California: 2011-2013.....	31
Dry Fruit Production and Price by Use – California: 2011-2013	31
Fresh Basis Equivalentents for Selected Dry Fruits – California: 2011-2013	31
Strawberry Area Planted, Harvested, Yield, Production, Price, and Value – States and United States: 2011-2013.....	32
Strawberry Utilization, Price, and Value by Utilization – States and United States: 2011-2013	33
Berry Area Harvested, Yield, Production, Utilization, Price, and Value by Crop – States and United States: 2011-2013.....	34

Unutilized Berry Production – States and United States: 2011-2013	38
Unutilized Cranberry Production – States and United States: 2011-2013	38
Blackberry Area Harvested, Yield, Production, Utilization, Price, and Value by Variety – Oregon: 2011-2013	39
Unutilized Cultivated Blackberry Production by Variety – Oregon: 2011-2013	39
Sweet Cherry Bearing Acreage, Yield, Production, Utilization, Price, and Value – States and United States: 2011-2013	40
Tart Cherry Bearing Acreage, Yield, Production, Utilization, Price, and Value – States and United States: 2011-2013	42
Sweet and Tart Cherry Processed Utilization and Price by Use – States and United States: 2011-2013	44
Unutilized Cherry Production by Crop – States and United States: 2011-2013	45
Sweet Cherry Bearing Acreage – United States: 2004-2013 Chart	46
Tart Cherry Bearing Acreage – United States: 2004-2013 Chart.....	46
Cranberry Area Harvested, Yield, Production, Utilization, Price, and Value – States and United States: 2011-2013	47
Grape Bearing Acreage, Yield, Production, Price, and Value – States and United States: 2011-2013	48
Unutilized Grape Production – States and United States: 2011-2013.....	49
Grape Fresh and Processed Utilization, Price, and Value – States and United States: 2011-2013	50
Grape Processed Utilization and Price by Use – States and United States: 2011-2013	52
Grape Processed Utilization by Variety – States and United States: 2011-2013	53
Concord Grapes for Processing Marketing Year Average Prices – New York and Pennsylvania: 2011-2013	53
Peach Bearing Acreage, Yield, Production, Price, and Value – States and United States: 2011-2013.....	54
Peach Utilized Production, Price, and Value by Utilization – States and United States: 2011-2013	56
Peach Processed Utilization and Price by Use – States and United States: 2011-2013	58
Unutilized Peach Production – States and United States: 2011-2013	58
Peach Bearing Acreage – United States: 2004-2013 Chart.....	59
Peach Bearing Utilized Production – United States: 2004-2013 Chart.....	59
All Pear Bearing Acreage, Yield, Production, Utilization, Price, and Value – States and United States: 2011-2013	60
Unutilized Pear Production – States and United States: 2011-2013	61

Pear Bearing Acreage, Yield, Production, Utilization, Price, and Value by Type – States and United States: 2011-2013 62

Tropical Fruit Acreage Harvested, Yield, Utilized Production, Utilization, Price, and Value by Crop – Hawaii: 2011-2013..... 64

Apples for Fresh Use Monthly Average Prices Received – States: July 2011 - June 2014..... 66

Apples for Fresh Use Monthly Average Prices Received – United States: July 2009 - June 2014..... 66

Grapes for Fresh Use Monthly Average Prices Received – United States: May 2009 - December 2013 67

Peaches for Fresh Use Monthly Average Prices Received – United States: May 2009 - September 2013 67

Pears for Fresh Use Monthly Average Prices Received – United States: July 2009 - June 2014..... 67

Tree Nut Bearing Acreage, Yield, Production, Price, and Value by Crop – States: 2011-2013..... 68

Tree Nut Utilization and Meat Production by Crop – States and United States: 2011-2013..... 69

Pecan Production, Price, and Value by Variety – States and United States: 2011-2013 70

Crop Comments 71

Definition of Terms..... 73

Price and Value Definitions 74

State MYA Price and Value Computations 74

United States MYA Price and Value Computations 74

Marketing Seasons for Noncitrus Fruits 75

Marketing Seasons for Tree Nuts..... 76

Statistical Methodology 77

Reliability of Selected Noncitrus Fruit Estimates..... 77

Information Contacts 78

Update Alert – September 4, 2014

The following items have been corrected: 2013 U.S. apples, grapes and Maine wild blueberries items in pages 8-11. New York apples Yield Per Acre, Total Production, Utilized Production – page 14-15; Price Per Ton, Value of Utilized Production – page 16; Fresh Quantity, Price Per Ton, and Value of Production – page 17-18; Processed Quantity, Price Per Ton, and Value of Production – page 19-20; Canned – Quantity and Value– page 21; Juice and Cider– Quantity and Value– page 21; Harvested Not Sold – page 22.

2013 U.S. and New York grapes Yield Per Acre, Total Production, Utilized Production – page 48; Price Per Ton, Value of Utilized Production, Unharvested Production, Harvested Not Sold – page 49; Fresh and Processed Quantity and Price Per Ton – page 50; Fresh and Processed Value of Utilized Production – page 51; Juice and Wine Quantity and Price Per Ton – page 52; Concord and Niagara Processed Utilization and Concord Grapes Processing Marketing Year Average Prices – page 53.

2013 Maine Wild Blueberries Processed price per pound – page 37 All Price – page 37; Processed value – page 37; Total Value – page 37.

Noncitrus Fruit Highlights

In 2013, the Nation's utilized production of the leading noncitrus fruit crops totaled 19.4 million tons, up 10 percent from the 2012 utilized production. Utilized production increased from 2012 for apples, apricots, cultivated blueberries, boysenberries, black raspberries, red raspberries, tart cherries, cranberries, grapes, California kiwifruit, California olives, pears, and prunes and plums. Utilized production decreased from 2012 for, blackberries, Maine wild blueberries, all California raspberries, sweet cherries, California dates, California figs, nectarines, peaches, California plums, California prunes, and strawberries.

The value of utilized production for 2013 noncitrus fruit crops totaled 16.1 billion dollars, up 4 percent from 2012. The value of utilized production for apricots is up 10 percent, Oregon black raspberries are up 21 percent, grapes increased by 9 percent, cultivated blueberries are up 10 percent, boysenberries are up 22 percent, red raspberries increased 43 percent, tart cherries increased 107 percent, California Olives are up 5 percent, and strawberries are 6 percent above last year. However, the value of utilized production for apples decreased 5 percent, Oregon cultivated blackberries decreased 5 percent, sweet cherries are down 9 percent, cranberries are down 25 percent, California dates are down 8 percent, nectarines are down 16 percent, California plums decreased 14 percent, peaches decreased 13 percent, prunes and plums decreased 5 percent, Maine wild blueberries are down 4 percent and California prunes decreased 21 percent from the previous year.

This page intentionally left blank.

Noncitrus Fruits and Nuts Bearing Acreage, Yield, Production, Price, and Value by Crop - United States: 2011-2013

Crop	Bearing acreage			Yield per acre		
	2011 (acres)	2012 (acres)	2013 (acres)	2011 (tons fresh equivalent)	2012 (tons fresh equivalent)	2013 (tons fresh equivalent)
Noncitrus fruits						
Apples	330,600	326,300	328,024	14.30	13.80	15.90
Apricots	12,150	12,150	10,850	5.49	5.00	5.63
Avocados	59,950	(NA)	64,700	4.39	(NA)	2.99
Bananas (Hawaii) ¹	1,000	(NA)	900	8.70	(NA)	8.05
Blackberries, cultivated (Oregon) ¹	7,300	6,800	6,000	3.61	3.94	4.25
Blueberries						
Cultivated ¹	72,500	77,700	78,960	3.02	2.97	3.27
Wild (Maine)	(NA)	(NA)	(NA)	(NA)	(NA)	(NA)
Boysenberries ¹	500	400	500	2.60	2.44	2.30
Raspberries						
Black (Oregon)	1,100	900	1,000	1.02	1.20	1.33
Red	11,000	11,000	11,200	3.56	3.15	3.28
All (California)	5,400	5,400	5,600	10.00	9.00	8.40
Cherries, Sweet	85,820	86,790	90,100	3.90	4.89	3.69
Cherries, Tart	36,000	36,500	37,650	3.22	1.17	3.91
Cranberries	38,500	40,300	42,000	10.00	9.98	10.70
Dates (California)	8,400	8,400	6,100	3.96	3.70	3.93
Figs (California)	8,600	8,600	7,300	4.50	4.50	3.96
Grapes	960,100	957,100	987,120	7.76	7.86	8.72
Guavas (Hawaii) ¹	110	(NA)	100	8.65	(NA)	10.50
Kiwifruit (California)	4,200	4,200	3,700	8.98	7.05	8.14
Nectarines	27,900	26,400	19,600	8.07	7.16	8.27
Olives (California)	41,500	44,000	40,000	1.72	3.64	4.15
Papayas (Hawaii) ¹	1,300	(NA)	1,300	11.00	(NA)	9.30
Peaches	112,480	112,480	105,230	9.53	8.68	8.57
Pears	54,400	51,900	49,600	17.80	16.40	17.70
Plums (California)	25,500	25,000	20,000	6.27	4.60	5.25
Prunes (California)	58,000	55,000	50,000	2.36	2.51	1.70
Prunes and Plums ²	2,810	2,780	2,600	4.73	4.76	5.17
Strawberries ¹	57,420	55,840	58,190	25.30	27.00	25.80
Total	2,024,540	1,955,940	2,028,324	(X)	(X)	(X)
				(tons in-shell equivalent)	(tons in-shell equivalent)	(tons in-shell equivalent)
Tree nuts						
Almonds (California) ³	800,000	820,000	840,000	2.24	2.02	2.06
Hazelnuts (Oregon)	28,500	29,000	30,000	1.35	1.22	1.50
Macadamias (Hawaii)	15,000	15,000	16,000	1.64	1.47	1.28
Pecans	(NA)	(NA)	(NA)	(NA)	(NA)	(NA)
Pistachios (California)	153,000	182,000	203,000	1.45	1.52	1.16
Walnuts (California)	245,000	270,000	280,000	1.88	1.84	1.76
Total	1,241,500	1,316,000	1,369,000	(X)	(X)	(X)

See footnote(s) at end of table.

--continued

Noncitrus Fruits and Nuts Bearing Acreage, Yield, Production, Price, and Value by Crop - United States: 2011-2013 (continued)

Crop	Total production			Utilized production		
	2011 (1,000 tons fresh equivalent)	2012 (1,000 tons fresh equivalent)	2013 (1,000 tons fresh equivalent)	2011 (1,000 tons fresh equivalent)	2012 (1,000 tons fresh equivalent)	2013 (1,000 tons fresh equivalent)
Noncitrus fruits						
Apples	4,712.5	4,490.6	5,220.9	4,659.0	4,458.3	5,173.5
Apricots	66.7	60.8	61.0	66.6	60.8	61.0
Avocados	263.0	(NA)	193.5	263.0	(NA)	193.5
Bananas (Hawaii)	(NA)	(NA)	(NA)	8.7	(NA)	7.3
Blackberries, cultivated (Oregon) ¹	26.4	26.8	25.8	26.3	26.8	25.5
Blueberries						
Cultivated	221.6	236.7	265.6	218.5	230.9	257.7
Wild (Maine)	40.0	45.6	43.9	40.0	45.6	43.6
Boysenberries	1.3	1.0	1.2	1.3	1.0	1.2
Raspberries						
Black (Oregon)	1.1	1.1	1.3	1.1	1.1	1.3
Red	39.2	34.7	36.7	39.2	34.7	36.7
All (California)	54.0	48.6	47.1	54.0	48.6	47.1
Cherries, sweet	334.4	424.0	332.1	330.3	418.4	296.0
Cherries, tart	115.9	42.6	147.1	115.2	42.5	145.6
Cranberries ⁴	385.7	402.3	447.9	385.7	402.3	444.0
Dates (California)	33.3	31.1	24.0	33.3	31.1	24.0
Figs (California)	38.7	38.7	28.9	38.7	38.7	28.9
Grapes	7,447.7	7,527.4	8,605.5	7,440.4	7,521.0	8,591.5
Guavas (Hawaii)	(NA)	(NA)	(NA)	1.0	(NA)	1.1
Kiwifruit (California)	37.7	29.6	30.1	36.7	27.1	29.4
Nectarines	225.2	188.9	162.1	225.2	188.9	162.1
Olives (California)	71.2	160.0	166.0	71.2	160.0	166.0
Papayas (Hawaii)	(NA)	(NA)	(NA)	14.3	(NA)	12.1
Peaches	1,071.8	976.8	901.7	1,043.0	963.8	886.6
Pears	965.7	851.2	877.1	965.1	851.1	876.5
Plums (California)	160.0	115.0	105.0	160.0	115.0	103.0
Prunes (California)	444.0	436.1	255.0	444.0	436.1	255.0
Prunes and Plums ²	13.3	13.2	13.4	12.9	12.1	12.8
Strawberries	(NA)	(NA)	(NA)	1,452.0	1,505.9	1,500.1
Total	(NA)	(NA)	(NA)	18,146.7	17,621.8	19,383.1
	(1,000 tons in-shell equivalent)	(1,000 tons in-shell equivalent)	(1,000 tons in-shell equivalent)	(1,000 tons in-shell equivalent)	(1,000 tons in-shell equivalent)	(1,000 tons in-shell equivalent)
Tree nuts						
Almonds (California)	(NA)	(NA)	(NA)	1,703.0	1,655.0	1,732.8
Hazelnuts (Oregon)	(NA)	(NA)	(NA)	38.5	35.5	45.0
Macadamias (Hawaii)	(NA)	(NA)	(NA)	24.5	22.0	20.5
Pecans	(NA)	(NA)	(NA)	134.9	151.4	133.2
Pistachios (California)	(NA)	(NA)	(NA)	222.0	275.5	235.0
Walnuts (California)	(NA)	(NA)	(NA)	461.0	497.0	492.0
Total	(NA)	(NA)	(NA)	2,583.9	2,636.4	2,658.5

See footnote(s) at end of table.

--continued

Noncitrus Fruits and Nuts Bearing Acreage, Yield, Production, Price, and Value by Crop - United States: 2011-2013 (continued)

Crop	Price			Value of utilized production		
	2011 (dollars)	2012 (dollars)	2013 (dollars)	2011 (1,000 dollars)	2012 (1,000 dollars)	2013 (1,000 dollars)
Noncitrus fruits						
Apples pounds	0.303	0.371	0.305	2,823,401	3,307,635	3,154,673
Apricots tons	616.00	673.00	737.00	41,056	40,879	44,987
Avocados tons	1,540.00	(NA)	1,810.00	406,047	(NA)	350,077
Bananas (Hawaii) pounds	0.650	(NA)	0.900	11,310	(NA)	13,050
Blackberries, cultivated (Oregon) pounds	0.812	0.832	0.828	42,783	44,520	42,268
Blueberries						
Cultivated pounds	1.850	1.690	1.390	807,579	781,808	715,958
Wild (Maine) pounds	0.910	0.758	0.757	72,690	69,075	65,984
Boysenberries pounds	1.010	1.050	1.090	2,638	2,044	2,503
Raspberries						
Black (Oregon) pounds	2.470	2.650	2.590	5,510	5,689	6,866
Red pounds	0.648	0.642	0.867	50,736	44,515	63,656
All (California) pounds	2.070	2.470	2.540	223,200	239,820	239,020
Cherries, sweet tons	2,530.00	2,020.00	2,610.00	834,585	843,311	771,798
Cherries, tart pounds	0.300	0.594	0.359	69,072	50,520	104,395
Cranberries barrels	44.80	47.90	32.30	345,561	385,506	287,225
Dates (California) tons	1,320.00	1,340.00	1,600.00	43,956	41,674	38,400
Figs (California) tons	526.00	(NA)	537.00	20,336	(NA)	15,522
Grapes tons	577.00	752.00	717.00	4,290,127	5,657,109	6,157,521
Guavas (Hawaii) pounds	0.170	(NA)	0.170	323	(NA)	357
Kiwifruit (California) tons	775.00	(NA)	1,110.00	28,439	(NA)	32,595
Nectarines tons	582.00	767.00	754.00	130,973	144,906	122,155
Olives (California) tons	733.00	813.00	821.00	52,168	130,038	136,231
Papayas (Hawaii) pounds	0.340	(NA)	0.344	9,722	(NA)	8,316
Peaches tons	564.00	653.00	614.00	588,330	629,163	544,252
Pears tons	380.00	509.00	493.00	366,552	432,988	432,311
Plums (California) tons	402.00	695.00	665.00	64,320	79,940	68,475
Prunes (California) ⁵ tons	1,310.00	1,330.00	1,700.00	179,470	183,540	144,500
Prunes and Plums ² tons	370.00	540.00	485.00	4,767	6,552	6,200
Strawberries cwt	82.50	80.00	84.70	2,394,724	2,408,596	2,541,982
Total ⁶	(X)	(X)	(X)	13,910,375	15,529,828	16,111,277
Tree nuts						
Almonds, shelled (California) pounds	1.990	2.580	2.900	4,007,860	4,816,860	5,768,100
Hazelnuts (Oregon) tons	2,330.00	1,830.00	2,680.00	89,705	64,965	120,600
Macadamias (Hawaii) pounds	0.780	0.800	0.870	38,220	35,200	35,670
Pecans pounds	2.430	1.570	1.730	655,889	476,781	460,390
Pistachios (California) pounds	1.980	2.610	2.200	879,120	1,438,110	1,034,000
Walnuts (California) ¹ tons	2,900.00	3,030.00	3,650.00	1,336,900	1,505,910	1,795,800
Total	(X)	(X)	(X)	7,007,694	8,337,826	9,214,560

(NA) Not available.

(X) Not applicable.

¹ Harvested acreage. Yield based on utilized production.

² Idaho, Michigan, Oregon, and Washington.

³ Yield based on in-shell equivalent. Shelling ratios are: 2011 - 0.596; - 2012 - 0.571; 2013 - 0.580.

⁴ Production is rounded to the nearest 1,000 barrels prior to converting to tons fresh equivalent.

⁵ Price is for dried basis.

⁶ 2012 total value of utilized production excludes: avocados, bananas, figs, guavas, kiwifruit, and papayas.

Fruits and Nuts Bearing Acreage by Type – United States: 2011-2013

Year	Citrus fruits ¹	Major deciduous fruits ²	Miscellaneous noncitrus ^{3,4}	Nuts ⁵	Total
	(acres)	(acres)	(acres)	(acres)	(acres)
2011	811,300	1,705,760	318,780	1,241,500	4,077,340
2012	804,300	1,692,400	263,540	1,316,000	4,076,240
2013	797,300	1,700,774	327,550	1,369,000	4,194,624

¹ Grapefruit, lemons, oranges, tangelos, and tangerines.

² Commercial apples, apricots, cherries, grapes, nectarines, peaches, pears, plums, and prunes.

³ Avocados, bananas, berries, cranberries, dates, figs, guavas, kiwifruit, olives, papayas, and strawberries.

⁴ 2012 bearing acreage for avocados, bananas, figs, guavas, and papayas were excluded from miscellaneous noncitrus.

⁵ Almonds, hazelnuts, macadamia nuts, pistachios, and walnuts.

Noncitrus Fruits Utilized Production by Type of Utilization – United States: 2011-2013

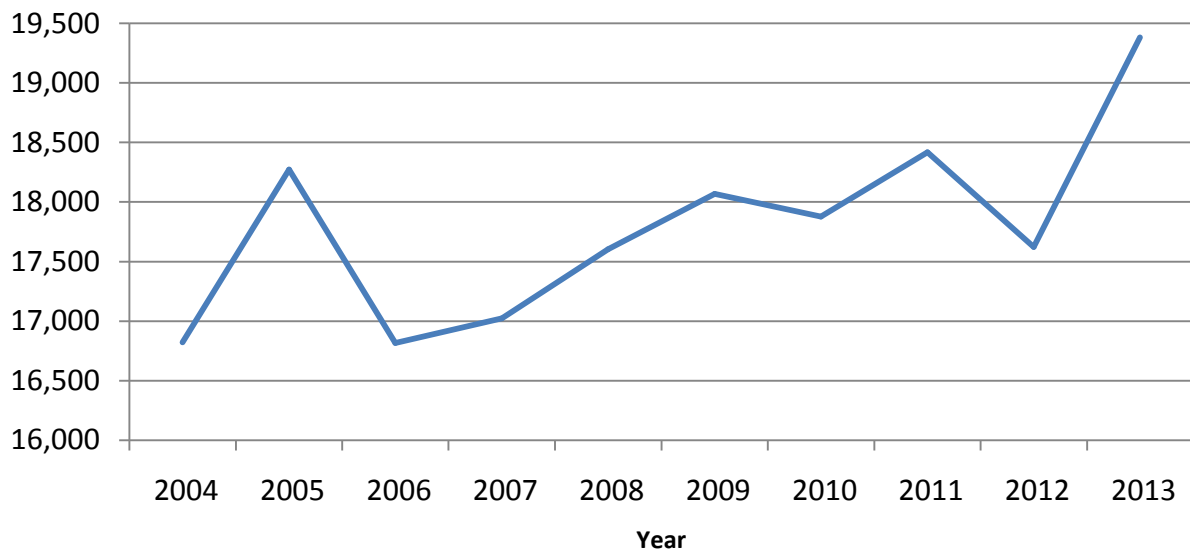
Year	Utilized production ¹	Fresh	Processed ²					
			Canned	Dried	Juice	Frozen	Wine	Other
	(1,000 tons)	(1,000 tons)	(1,000 tons)	(1,000 tons)	(1,000 tons)	(1,000 tons)	(1,000 tons)	(1,000 tons)
2011	18,146.7	7,701.9	1,300.5	2,398.6	1,153.2	736.6	4,154.3	315.9
2012	17,621.8	7,302.6	1,100.5	2,094.1	977.8	641.2	4,703.9	285.4
2013	19,383.1	7,731.8	1,345.2	2,296.5	1,338.3	788.9	5,066.2	372.2

¹ Cranberry quantity included in total utilized production, excluded from fresh and processed breakdowns.

² Processed strawberries are included in frozen.

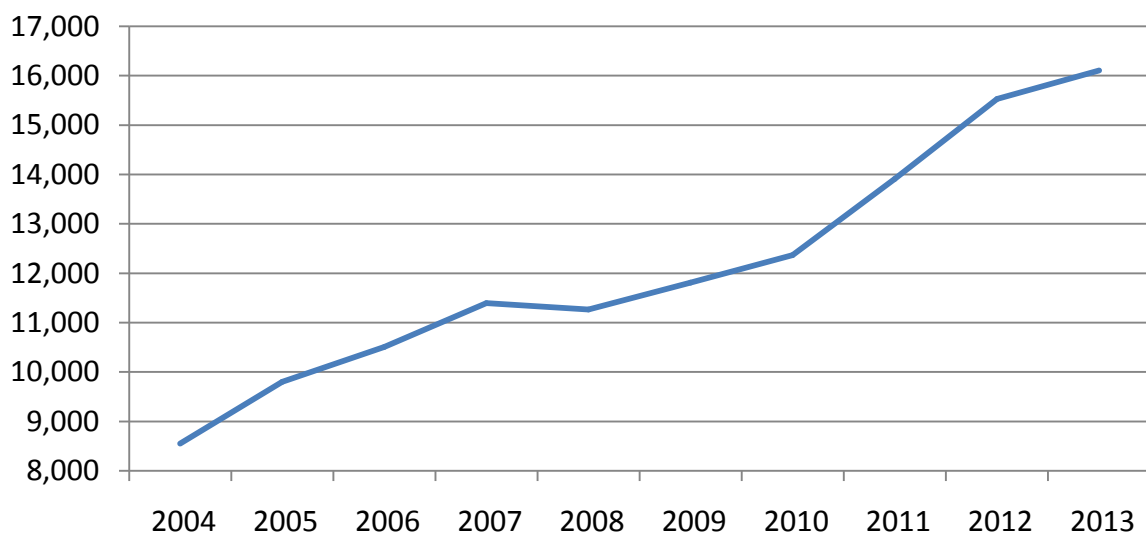
Noncitrus Fruits Utilized Production United States: 2004-2013

(000) Tons fresh equivalent



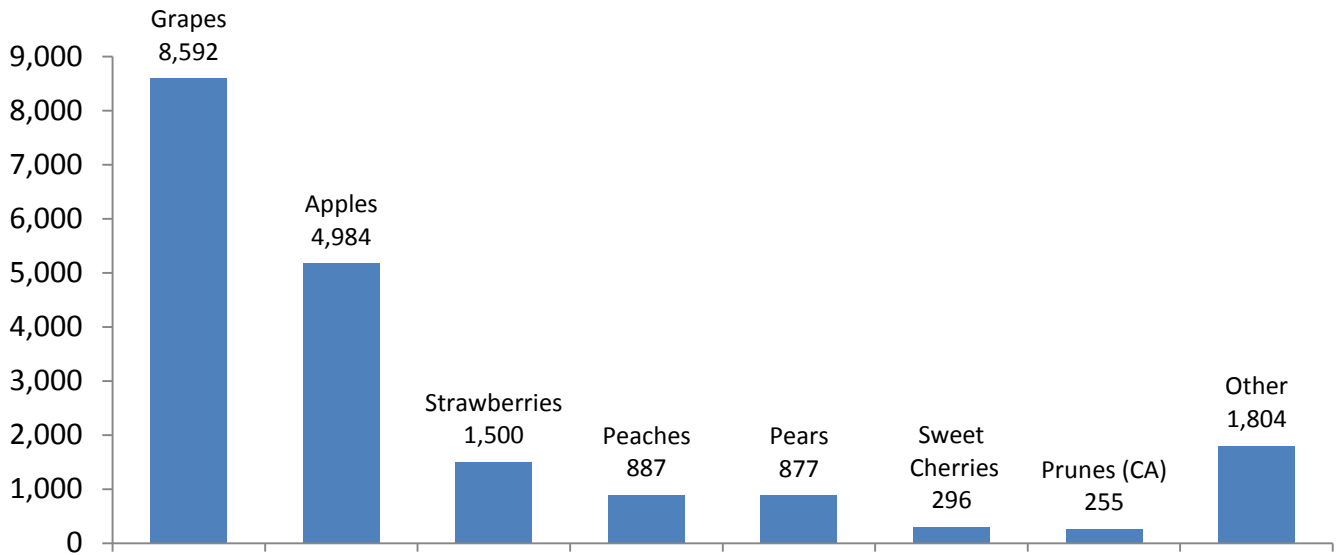
Noncitrus Fruits Value of Utilized Production United States: 2004-2013

Million dollars



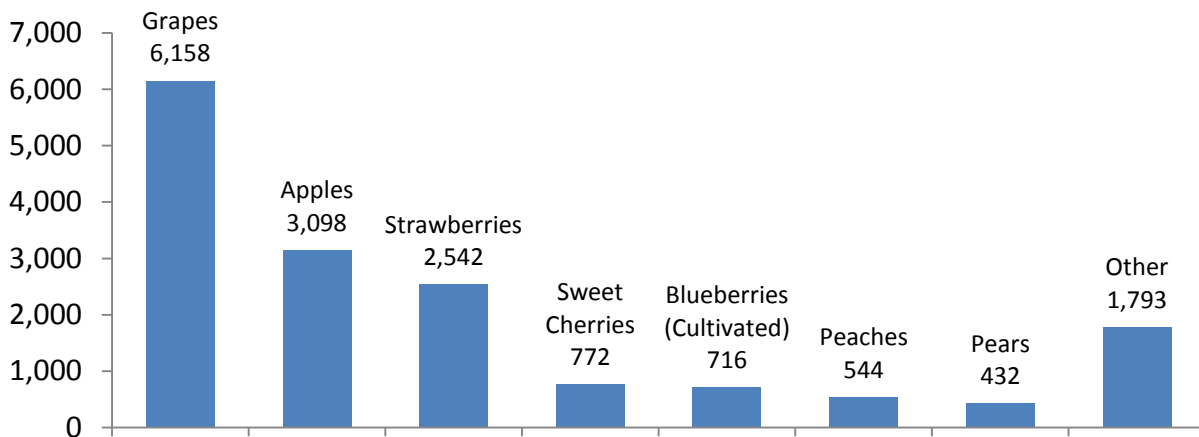
Noncitrus Fruits Utilized Production United States: 2013

(000) Tons fresh equivalent



Noncitrus Fruits Value of Utilized Production United States: 2013

Million dollars



Commercial Apple Bearing Acreage, Yield, Production, Price, and Value – States and United States: 2011-2013

State	Bearing acreage			Yield per acre ¹		
	2011 (acres)	2012 (acres)	2013 (acres)	2011 (pounds)	2012 (pounds)	2013 (pounds)
Arizona	1,200	1,000	1,000	9,170	8,000	16,500
California	17,500	16,000	15,200	16,000	16,900	17,800
Colorado	1,300	1,200	1,200	6,920	14,200	4,670
Connecticut	2,100	2,100	2,000	10,500	7,860	13,500
Idaho	2,600	2,600	2,700	23,100	28,800	26,700
Illinois	2,200	2,100	1,504	18,200	15,200	8,640
Indiana	1,700	1,500	1,400	11,800	3,000	20,700
Iowa	1,000	1,000	950	4,000	700	7,680
Maine	3,100	3,100	2,900	9,350	9,680	9,310
Maryland	1,750	1,800	1,700	22,900	19,400	19,400
Massachusetts	4,000	4,000	3,000	9,630	7,000	14,500
Michigan	34,000	34,200	36,500	28,800	3,360	34,500
Minnesota	2,450	2,400	2,200	9,590	4,670	8,740
Missouri	1,800	1,600	1,000	8,330	21,900	13,500
New Hampshire	1,900	1,900	1,400	9,470	8,160	18,200
New Jersey	1,900	1,900	1,700	18,900	18,400	17,100
New York	42,000	42,000	40,000	29,000	17,100	35,300
North Carolina	6,900	6,700	5,100	20,300	5,000	26,500
Ohio	4,300	4,000	3,800	15,500	8,250	14,200
Oregon	4,100	4,000	4,900	22,600	32,500	28,800
Pennsylvania	21,000	21,000	20,000	21,800	23,500	23,500
Rhode Island	300	300	220	8,330	5,670	11,400
Tennessee	800	700	650	10,600	9,140	10,600
Utah	1,400	1,400	1,300	13,600	10,000	12,700
Vermont	2,800	2,800	1,600	12,000	9,110	21,300
Virginia	11,800	11,800	10,700	18,600	19,500	18,200
Washington	146,000	146,000	156,000	37,100	44,200	38,100
West Virginia	4,900	4,000	4,300	13,700	22,800	22,100
Wisconsin	3,800	3,200	3,100	13,500	7,380	13,500
United States	330,600	326,300	328,024	28,500	27,500	31,800

See footnote(s) at end of table.

--continued

Commercial Apple Bearing Acreage, Yield, Production, Price, and Value – States and United States: 2011-2013 (continued)

State	Total production			Utilized production		
	2011	2012	2013	2011	2012	2013
	(million pounds)	(million pounds)	(million pounds)	(million pounds)	(million pounds)	(million pounds)
Arizona	11.0	8.0	16.5	11.0	8.0	16.3
California	280.0	270.0	270.0	270.0	270.0	270.0
Colorado	9.0	17.0	5.6	8.0	16.0	5.3
Connecticut	22.0	16.5	27.0	19.5	15.5	26.5
Idaho	60.0	75.0	72.0	60.0	75.0	70.0
Illinois	40.0	32.0	13.0	33.0	25.0	13.0
Indiana	20.0	4.5	29.0	18.0	4.5	26.0
Iowa	4.0	0.7	7.3	3.3	0.2	5.8
Maine	29.0	30.0	27.0	22.5	27.5	25.5
Maryland	40.0	35.0	33.0	39.0	34.7	32.6
Massachusetts	38.5	28.0	43.5	36.0	27.5	40.5
Michigan	980.0	115.0	1,260.0	975.0	115.0	1,250.0
Minnesota	23.5	11.2	19.2	19.4	9.4	14.1
Missouri	15.0	35.0	13.5	14.0	33.0	12.0
New Hampshire	18.0	15.5	25.5	17.0	13.5	24.5
New Jersey	36.0	35.0	29.0	35.0	34.0	28.5
New York	1,220.0	720.0	1,410.0	1,210.0	710.0	1,390.0
North Carolina	140.0	33.5	135.0	140.0	32.0	125.0
Ohio	66.6	33.0	54.0	59.4	26.0	51.0
Oregon	92.5	130.0	141.0	90.0	128.0	137.0
Pennsylvania	458.0	494.0	469.0	439.0	475.0	455.0
Rhode Island	2.5	1.7	2.5	2.2	1.6	2.3
Tennessee	8.5	6.4	6.9	8.2	6.0	6.3
Utah	19.0	14.0	16.5	18.3	13.8	15.8
Vermont	33.5	25.5	34.0	26.5	24.0	31.0
Virginia	220.0	230.0	195.0	220.0	230.0	190.0
Washington	5,420.0	6,450.0	5,950.0	5,420.0	6,450.0	5,950.0
West Virginia	67.0	91.0	95.0	65.0	90.0	95.0
Wisconsin	51.4	23.6	41.7	38.7	21.4	37.9
United States	9,425.0	8,981.1	10,441.7	9,318.0	8,916.6	10,346.9

See footnote(s) at end of table.

--continued

Commercial Apple Bearing Acreage, Yield, Production, Price, and Value – States and United States: 2011-2013 (continued)

State	Price per pound			Value of utilized production		
	2011 (dollars)	2012 (dollars)	2013 (dollars)	2011 (1,000 dollars)	2012 (1,000 dollars)	2013 (1,000 dollars)
Arizona	0.241	0.217	0.274	2,647	1,738	4,470
California	0.215	0.241	0.233	57,975	64,970	62,828
Colorado	0.293	0.304	0.363	2,340	4,860	1,923
Connecticut	0.539	0.654	0.741	10,507	10,130	19,630
Idaho	0.239	0.320	0.331	14,350	24,000	23,153
Illinois	0.575	0.557	0.364	18,989	13,928	4,738
Indiana	0.398	0.396	0.398	7,166	1,784	10,338
Iowa	0.663	0.675	0.697	2,187	135	4,040
Maine	0.474	0.560	0.516	10,676	15,388	13,155
Maryland	0.259	0.402	0.187	10,115	13,939	6,086
Massachusetts	0.603	0.623	0.520	21,690	17,123	21,044
Michigan	0.207	0.352	0.197	201,650	40,475	245,810
Minnesota	0.814	0.811	0.835	15,796	7,625	11,801
Missouri	0.313	0.471	0.365	4,379	15,554	4,380
New Hampshire	0.505	0.581	0.429	8,588	7,845	10,506
New Jersey	0.672	0.839	0.451	23,505	28,540	12,844
New York	0.202	0.352	0.171	244,000	249,790	237,233
North Carolina	0.192	0.313	0.201	26,863	10,016	25,113
Ohio	0.367	0.336	0.418	21,808	8,735	21,310
Oregon	0.221	0.250	0.364	19,861	32,018	49,829
Pennsylvania	0.182	0.281	0.186	79,739	133,595	84,655
Rhode Island	0.793	0.851	0.407	1,745	1,362	937
Tennessee	0.279	0.480	0.444	2,290	2,880	2,796
Utah	0.222	0.263	0.481	4,054	3,635	7,607
Vermont	0.304	0.434	0.451	8,044	10,405	13,970
Virginia	0.182	0.297	0.174	40,055	68,220	33,100
Washington	0.357	0.385	0.368	1,932,260	2,482,350	2,189,095
West Virginia	0.175	0.258	0.137	11,371	23,193	13,008
Wisconsin	0.485	0.626	0.509	18,751	13,402	19,274
United States	0.303	0.371	0.305	2,823,401	3,307,635	3,154,673

¹ Yield is based on total production, which includes unharvested production and fruit harvested but not sold due to market conditions.

Commercial Apple Fresh Market Utilization, Price, and Value – States and United States: 2011-2013

[Equivalent packinghouse door returns for California, Michigan, New York, and Washington; price at point of first sale for all other States]

State	Quantity			Price per pound		
	2011	2012	2013	2011	2012	2013
	(million pounds)	(million pounds)	(million pounds)	(dollars)	(dollars)	(dollars)
Arizona	1.0	1.1	(D)	0.780	0.921	(D)
California	125.0	(D)	(D)	0.325	(D)	(D)
Colorado	4.0	12.0	(D)	0.450	0.365	(D)
Connecticut	17.5	14.5	25.5	0.590	0.690	0.760
Idaho	35.0	55.0	50.0	0.335	0.400	0.425
Illinois	(D)	(D)	(D)	(D)	(D)	(D)
Indiana	13.0	3.0	17.0	0.507	0.537	0.550
Iowa	(D)	(D)	(D)	(D)	(D)	(D)
Maine	17.0	22.5	22.5	0.595	0.655	0.576
Maryland	18.0	16.7	11.6	0.460	0.570	0.333
Massachusetts	31.0	23.0	25.5	0.685	0.720	0.752
Michigan	350.0	45.0	480.0	0.350	0.480	0.345
Minnesota	(D)	(D)	(D)	(D)	(D)	(D)
Missouri	9.0	22.0	8.0	0.406	0.592	0.458
New Hampshire	13.0	10.5	(D)	0.630	0.710	(D)
New Jersey	25.0	24.0	19.0	0.907	1.150	0.591
New York	530.0	335.0	650.0	0.333	0.539	0.255
North Carolina	59.0	16.0	55.0	0.308	0.412	0.330
Ohio	43.4	17.8	37.0	0.460	0.420	0.540
Oregon	75.0	107.0	120.0	0.244	0.281	0.403
Pennsylvania	184.0	197.0	180.0	0.290	0.386	0.327
Rhode Island	(D)	(D)	(D)	(D)	(D)	(D)
Tennessee	(D)	(D)	(D)	(D)	(D)	(D)
Utah	17.5	13.5	(D)	0.228	0.267	(D)
Vermont	16.0	17.5	26.0	0.445	0.550	0.520
Virginia	60.0	120.0	80.0	0.364	0.385	0.280
Washington	4,550.0	5,350.0	4,850.0	0.402	0.446	0.430
West Virginia	19.0	13.0	20.0	0.365	0.478	0.276
Wisconsin	32.5	18.5	33.8	0.563	0.708	0.557
Other States ¹	57.2	130.4	176.0	0.699	0.500	0.458
United States	6,302.1	6,585.0	6,886.9	0.394	0.453	0.407

See footnote(s) at end of table.

--continued

**Commercial Apple Fresh Market Utilization, Price, and Value – States and United States:
2011-2013 (continued)**

[Equivalent packinghouse door returns for California, Michigan, New York, and Washington; price at point of first sale for all other States]

State	Value of production		
	2011	2012	2013
	(1,000 dollars)	(1,000 dollars)	(1,000 dollars)
Arizona	780	1,013	(D)
California	40,625	(D)	(D)
Colorado	1,800	4,380	(D)
Connecticut	10,325	10,005	19,380
Idaho	11,725	22,000	21,250
Illinois	(D)	(D)	(D)
Indiana	6,591	1,611	9,350
Iowa	(D)	(D)	(D)
Maine	10,115	14,738	12,960
Maryland	8,280	9,519	3,863
Massachusetts	21,235	16,560	19,176
Michigan	122,500	21,600	165,600
Minnesota	(D)	(D)	(D)
Missouri	3,654	13,024	3,664
New Hampshire	8,190	7,455	(D)
New Jersey	22,675	27,600	11,229
New York	176,490	180,565	165,750
North Carolina	18,172	6,592	18,150
Ohio	19,964	7,476	19,980
Oregon	18,300	30,067	48,360
Pennsylvania	53,360	76,042	58,860
Rhode Island	(D)	(D)	(D)
Tennessee	(D)	(D)	(D)
Utah	3,990	3,605	(D)
Vermont	7,120	9,625	13,520
Virginia	21,840	46,200	22,400
Washington	1,829,100	2,386,100	2,085,500
West Virginia	6,935	6,214	5,520
Wisconsin	18,298	13,098	18,827
Other States ¹	39,967	65,161	80,669
United States	2,482,031	2,980,250	2,804,008

(D) Withheld to avoid disclosing data for individual operations.

¹ Includes data withheld above and/or data for States not listed in this table.

Commercial Apple Processed Utilization, Price, and Value – States and United States: 2011-2013

State	Quantity			Price per ton		
	2011	2012	2013	2011	2012	2013
	(million pounds)	(million pounds)	(million pounds)	(dollars)	(dollars)	(dollars)
Arizona	10.0	6.9	12.9	373.00	210.00	(D)
California	145.0	(D)	(D)	239.00	(D)	(D)
Colorado	4.0	4.0	1.0	270.00	240.00	(D)
Connecticut	2.0	1.0	1.0	182.00	250.00	500.00
Idaho	25.0	20.0	20.0	210.00	200.00	190.00
Illinois	(D)	(D)	(D)	(D)	(D)	(D)
Indiana	5.0	1.5	9.0	230.00	231.00	220.00
Iowa	(D)	(D)	(D)	(D)	(D)	(D)
Maine	5.5	5.0	3.0	204.00	260.00	130.00
Maryland	21.0	18.0	21.0	175.00	491.00	212.00
Massachusetts	5.0	4.5	15.0	182.00	250.00	249.00
Michigan	625.0	70.0	770.0	253.00	539.00	208.00
Minnesota	(D)	(D)	(D)	(D)	(D)	(D)
Missouri	5.0	11.0	4.0	290.00	460.00	358.00
New Hampshire	4.0	3.0	11.0	199.00	260.00	(D)
New Jersey	10.0	10.0	9.5	166.00	188.00	340.00
New York	680.0	375.0	740.0	199.00	369.00	193.00
North Carolina	81.0	16.0	70.0	215.00	428.00	199.00
Ohio	16.0	8.2	14.0	231.00	307.00	190.00
Oregon	15.0	21.0	17.0	208.00	186.00	173.00
Pennsylvania	255.0	(D)	275.0	207.00	(D)	188.00
Rhode Island	(D)	(D)	(D)	(D)	(D)	(D)
Tennessee	(D)	(D)	(D)	(D)	(D)	(D)
Utah	0.8	(D)	(D)	160.00	(D)	(D)
Vermont	10.5	6.5	5.0	176.00	240.00	180.00
Virginia	160.0	110.0	110.0	228.00	400.00	195.00
Washington	870.0	1,100.0	1,100.0	237.00	175.00	188.00
West Virginia	46.0	77.0	75.0	193.00	441.00	200.00
Wisconsin	6.2	2.9	4.1	146.00	210.00	218.00
Other States ¹	8.9	460.1	172.5	234.00	362.00	359.00
United States	3,015.9	2,331.6	3,460.0	226.00	281.00	203.00

See footnote(s) at end of table.

--continued

**Commercial Apple Processed Utilization, Price, and Value – States and United States:
2011-2013 (continued)**

State	Value of production		
	2011 (1,000 dollars)	2012 (1,000 dollars)	2013 (1,000 dollars)
Arizona	1,867	725	(D)
California	17,350	(D)	(D)
Colorado	540	480	(D)
Connecticut	182	125	250
Idaho	2,625	2,000	1,903
Illinois	(D)	(D)	(D)
Indiana	575	173	988
Iowa	(D)	(D)	(D)
Maine	561	650	195
Maryland	1,835	4,420	2,223
Massachusetts	455	563	1,868
Michigan	79,150	18,875	80,210
Minnesota	(D)	(D)	(D)
Missouri	725	2,530	716
New Hampshire	398	390	(D)
New Jersey	830	940	1,615
New York	67,510	69,225	71,483
North Carolina	8,691	3,424	6,963
Ohio	1,844	1,259	1,330
Oregon	1,561	1,951	1,469
Pennsylvania	26,379	57,553	25,795
Rhode Island	(D)	(D)	(D)
Tennessee	(D)	(D)	(D)
Utah	64	(D)	(D)
Vermont	924	780	450
Virginia	18,215	22,020	10,700
Washington	103,160	96,250	103,595
West Virginia	4,436	16,979	7,488
Wisconsin	453	304	447
Other States ¹	1,040	25,769	30,977
United States	341,370	327,385	350,665

(D) Withheld to avoid disclosing data for individual operations.

¹ Includes data withheld above and/or data for States not listed in this table.

Commercial Apple Processed Utilization and Price by Use – States and United States: 2011-2013

Use and State	Quantity			Price per ton		
	2011	2012	2013	2011	2012	2013
	(million pounds)	(million pounds)	(million pounds)	(dollars)	(dollars)	(dollars)
Canned						
California	(D)	(D)	(D)	(D)	(D)	(D)
Maryland	11.0	9.0	13.0	198.00	525.00	240.00
Michigan	245.0	25.0	290.0	260.00	550.00	220.00
New York	330.0	190.0	325.0	212.00	540.00	197.00
North Carolina	54.3	16.0	46.0	220.00	428.00	185.00
Pennsylvania	177.0	186.0	187.0	225.00	420.00	201.00
Virginia	130.0	90.0	100.0	221.00	385.00	200.00
Washington	130.0	163.9	190.0	241.00	175.00	317.00
West Virginia	29.0	48.0	49.0	213.00	441.00	215.00
Other States ¹	17.4	21.0	19.1	233.00	252.00	291.00
United States	1,123.7	748.9	1,219.1	230.00	395.00	224.00
Juice and cider						
California	(D)	(D)	(D)	(D)	(D)	(D)
Maryland	9.0	8.0	6.0	157.00	491.00	195.00
Michigan	135.0	15.0	185.0	190.00	350.00	130.00
New York	270.0	155.0	340.0	170.00	170.00	140.00
North Carolina	23.5	-	21.0	200.00	-	230.00
Ohio	(D)	(D)	(D)	(D)	(D)	(D)
Oregon	6.0	15.0	7.5	170.00	150.00	100.00
Pennsylvania	68.0	82.0	81.0	160.00	400.00	127.00
Virginia	(D)	(D)	(D)	(D)	(D)	(D)
Washington	470.0	595.1	630.0	210.00	175.00	116.00
West Virginia	16.0	27.0	24.0	161.00	441.00	170.00
Other States ¹	210.9	215.0	222.7	229.00	277.00	277.00
United States	1,208.4	1,112.1	1,517.2	198.00	221.00	150.00
Frozen						
United States	190.5	66.6	244.2	246.00	328.00	244.00
Dried						
United States	183.5	223.0	171.0	214.00	176.00	200.00
Fresh slices						
United States	238.4	127.9	243.5	357.00	302.00	356.00
Other ²						
Maryland	1.0	1.0	2.0	78.00	185.00	78.00
Michigan	(D)	(D)	(D)	(D)	(D)	(D)
New York	(D)	(D)	(D)	(D)	(D)	(D)
Other States ¹	70.0	51.8	62.3	203.00	244.00	307.00
United States	71.0	52.8	64.3	201.00	249.00	303.00

- Represents zero.

(D) Withheld to avoid disclosing data for individual operations.

¹ Includes data withheld above and/or data for States not listed in this table.

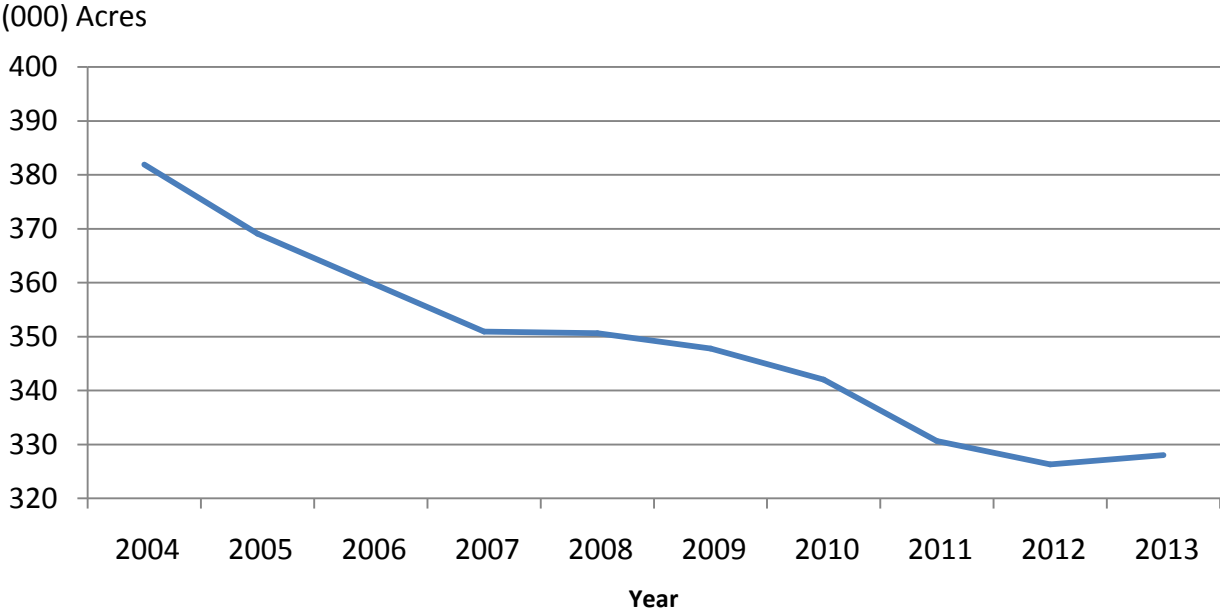
² Includes vinegar, wine, and slices for pie making.

Unutilized Apple Production – States and United States: 2011-2013

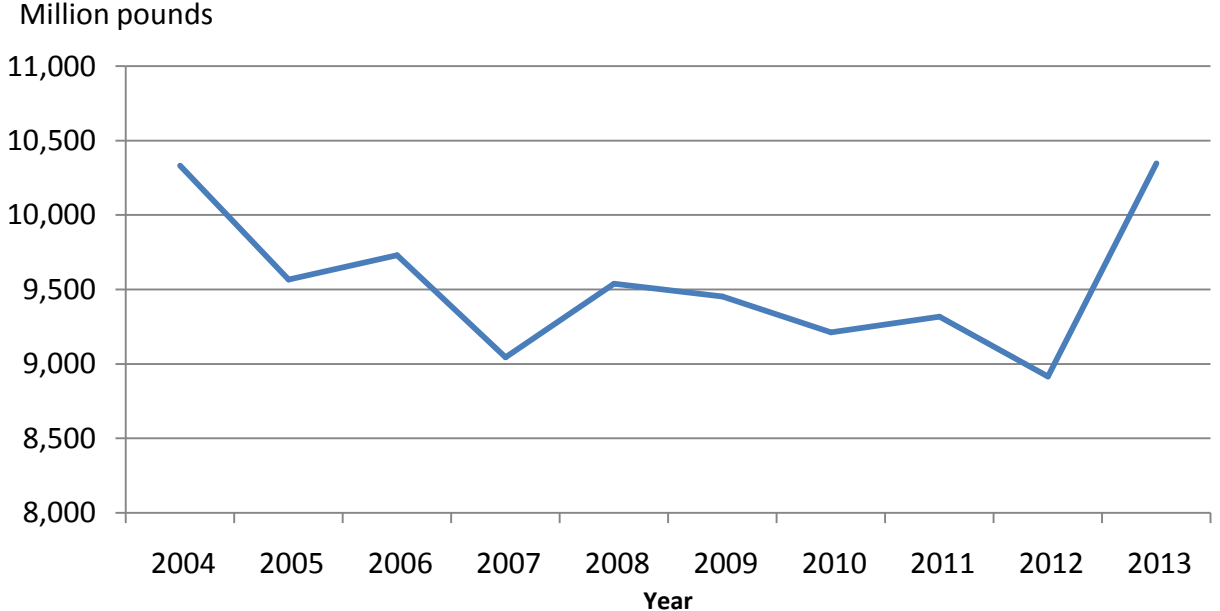
State	Unharvested production			Harvested not sold		
	2011 (million pounds)	2012 (million pounds)	2013 (million pounds)	2011 (million pounds)	2012 (million pounds)	2013 (million pounds)
Arizona	-	-	-	-	-	0.2
California	10.0	-	-	-	-	-
Colorado	1.0	1.0	0.2	-	-	0.1
Connecticut	2.0	1.0	0.5	0.5	-	-
Idaho	-	-	2.0	-	-	-
Illinois	5.0	5.0	-	2.0	2.0	-
Indiana	1.0	-	2.9	1.0	-	0.1
Iowa	0.5	0.5	1.1	0.2	-	0.4
Maine	1.5	1.5	0.5	5.0	1.0	1.0
Maryland	0.3	-	0.2	0.7	0.3	0.2
Massachusetts	2.0	0.5	2.0	0.5	-	1.0
Michigan	5.0	-	10.0	-	-	-
Minnesota	3.1	1.3	4.3	1.0	0.5	0.8
Missouri	0.7	1.4	0.4	0.3	0.6	1.1
New Hampshire	1.0	2.0	0.8	-	-	0.2
New Jersey	1.0	1.0	-	-	-	0.5
New York	10.0	10.0	15.0	-	-	5.0
North Carolina	-	1.5	6.0	-	-	4.0
Ohio	3.1	0.4	0.6	4.1	6.6	2.4
Oregon	2.0	1.5	2.0	0.5	0.5	2.0
Pennsylvania	9.0	8.0	3.0	10.0	11.0	11.0
Rhode Island	0.3	0.1	0.1	-	-	0.1
Tennessee	0.3	0.2	0.3	-	0.2	0.3
Utah	0.4	0.1	0.6	0.3	0.1	0.1
Vermont	6.5	1.5	0.5	0.5	-	2.5
Virginia	-	-	5.0	-	-	-
West Virginia	1.0	1.0	-	1.0	-	-
Wisconsin	10.4	1.7	2.4	2.3	0.5	1.4
United States	77.1	41.2	60.4	29.9	23.3	34.4

- Represents zero.

Commercial Apple Bearing Acreage United States: 2004-2013



Commercial Apple Utilized Production United States: 2004-2013



Other Fruit Bearing Acreage, Yield, Production, Utilization, Price, and Value by Crop – States and United States: 2011-2013

Crop, State, and season	Bearing acreage	Yield per acre ¹	Production		Utilization	
			Total	Utilized	Fresh	Processed
	(acres)	(tons)	(tons)	(tons)	(tons)	(tons)
Apricots						
California						
2011	10,800	5.79	62,550	62,550	20,500	42,050
2012	10,800	4.98	53,800	53,800	17,000	36,800
2013	9,500	5.73	54,400	54,400	20,000	34,400
Utah						
2011	(D)	(D)	200	170	(D)	(D)
2012	(D)	(D)	300	270	(D)	(D)
2013	(D)	(D)	135	128	(D)	(D)
Washington						
2011	(D)	(D)	3,900	3,900	(D)	(D)
2012	(D)	(D)	6,700	6,700	(D)	(D)
2013	(D)	(D)	6,500	6,500	(D)	(D)
United States						
2011	12,150	5.49	66,650	66,620	23,990	42,630
2012	12,150	5.00	60,800	60,770	23,130	37,640
2013	10,850	5.63	61,035	61,028	25,228	35,800
Avocados						
California						
2011-2012	52,200	4.43	231,500	231,500	231,500	(NA)
2012-2013	(NA)	(NA)	(NA)	(NA)	(NA)	(NA)
2013-2014	57,300	2.84	162,500	162,500	162,500	(NA)
Florida						
2011-2012	7,400	4.20	31,100	31,100	31,100	(NA)
2012-2013	(NA)	(NA)	(NA)	(NA)	(NA)	(NA)
2013-2014	7,000	4.39	30,700	30,700	30,700	(NA)
Hawaii						
2011-2012	350	1.00	350	350	350	(NA)
2012-2013	(NA)	(NA)	(NA)	(NA)	(NA)	(NA)
2013-2014	400	0.80	320	320	320	(NA)
United States						
2011-2012	59,950	4.39	262,950	262,950	262,950	(NA)
2012-2013	(NA)	(NA)	(NA)	(NA)	(NA)	(NA)
2013-2014	64,700	2.99	193,520	193,520	193,520	(NA)
Dates						
California						
2011	8,400	3.96	33,300	33,300	33,300	(NA)
2012	8,400	3.70	31,100	31,100	31,100	(NA)
2013	6,100	3.93	24,000	24,000	24,000	(NA)

See footnote(s) at end of table.

--continued

Other Fruit Bearing Acreage, Yield, Production, Utilization, Price, and Value by Crop – States and United States: 2011-2013 (continued)

Crop, State, and season	Price per ton			Value of production		
	Fresh (dollars)	Processed (dollars)	All (dollars)	Fresh (1,000 dollars)	Processed (1,000 dollars)	Total (1,000 dollars)
Apricots ²						
California						
2011	875.00	375.00	539.00	17,938	15,767	33,705
2012	1,050.00	392.00	600.00	17,850	14,410	32,260
2013	1,120.00	427.00	682.00	22,400	14,691	37,091
Utah						
2011	(D)	(D)	1,290.00	(D)	(D)	219
2012	(D)	(D)	919.00	(D)	(D)	248
2013	(D)	(D)	1,010.00	(D)	(D)	129
Washington						
2011	(D)	(D)	1,830.00	(D)	(D)	7,132
2012	(D)	(D)	1,250.00	(D)	(D)	8,371
2013	(D)	(D)	1,190.00	(D)	(D)	7,767
United States						
2011	1,050.00	372.00	616.00	25,198	15,858	41,056
2012	1,140.00	387.00	673.00	26,319	14,560	40,879
2013	1,190.00	415.00	737.00	30,128	14,859	44,987
Avocados						
California						
2011-2012	1,650.00	(X)	1,650.00	381,975	(X)	381,975
2012-2013	(NA)	(X)	(NA)	(NA)	(X)	(NA)
2013-2014	2,000.00	(X)	2,000.00	325,000	(X)	325,000
Florida						
2011-2012	756.00	(X)	756.00	23,512	(X)	23,512
2012-2013	(NA)	(X)	(NA)	(NA)	(X)	(NA)
2013-2014	796.00	(X)	796.00	24,437	(X)	24,437
Hawaii						
2011-2012	1,600.00	(X)	1,600.00	560	(X)	560
2012-2013	(NA)	(X)	(NA)	(NA)	(X)	(NA)
2013-2014	2,000.00	(X)	2,000.00	640	(X)	640
United States						
2011-2012	1,540.00	(X)	1,540.00	406,047	(X)	406,047
2012-2013	(NA)	(X)	(NA)	(NA)	(X)	(NA)
2013-2014	1,810.00	(X)	1,810.00	350,077	(X)	350,077
Dates						
California						
2011	1,320.00	(X)	1,320.00	43,956	(X)	43,956
2012	1,340.00	(X)	1,340.00	41,674	(X)	41,674
2013	1,600.00	(X)	1,600.00	38,400	(X)	38,400

See footnote(s) at end of table.

--continued

Other Fruit Bearing Acreage, Yield, Production, Utilization, Price, and Value by Crop – States and United States: 2011-2013 (continued)

Crop, State, and season	Bearing acreage (acres)	Yield per acre ¹ (tons)	Production		Utilization	
			Total (tons)	Utilized (tons)	Fresh (tons)	Processed (tons)
Figs ³						
California						
2011	8,600	4.50	38,660	38,660	3,960	34,700
2012	8,600	4.50	38,660	38,660	3,960	34,700
2013	7,300	3.96	28,900	28,900	1,000	27,900
Kiwifruit						
California						
2011	4,200	8.98	37,700	36,700	33,300	3,400
2012	4,200	7.05	29,600	27,100	26,600	500
2013	3,700	8.14	30,100	29,400	26,900	2,500
Nectarines ⁴						
California						
2011	26,500	8.15	216,000	216,000	216,000	(NA)
2012	25,000	7.20	180,000	180,000	180,000	(NA)
2013	18,000	8.33	150,000	150,000	150,000	(NA)
Washington						
2011	1,400	6.57	9,200	9,200	9,200	(NA)
2012	1,400	6.36	8,900	8,900	8,900	(NA)
2013	1,600	7.56	12,100	12,100	12,100	(NA)
United States						
2011	27,900	8.07	225,200	225,200	225,200	(NA)
2012	26,400	7.16	188,900	188,900	188,900	(NA)
2013	19,600	8.27	162,100	162,100	162,100	(NA)
Olives						
California						
2011	41,500	1.72	71,200	71,200	(NA)	71,200
2012	44,000	3.64	160,000	160,000	(NA)	160,000
2013	40,000	4.15	166,000	166,000	(NA)	166,000
Plums						
California						
2011	25,500	6.27	160,000	160,000	(D)	(D)
2012	25,000	4.60	115,000	115,000	114,000	1,000
2013	20,000	5.25	105,000	103,000	(D)	(D)

See footnote(s) at end of table.

--continued

Other Fruit Bearing Acreage, Yield, Production, Utilization, Price, and Value by Crop – States and United States: 2011-2013 (continued)

Crop, State, and season	Price per ton			Value of production		
	Fresh (dollars)	Processed (dollars)	All (dollars)	Fresh (1,000 dollars)	Processed (1,000 dollars)	Total (1,000 dollars)
Figs						
California						
2011	(D)	(D)	526.00	(D)	(D)	20,336
2012	(NA)	(NA)	(NA)	(NA)	(NA)	(NA)
2013	(D)	(D)	537.00	(D)	(D)	15,522
Kiwifruit						
California						
2011	(D)	(D)	775.00	(D)	(D)	28,439
2012	(NA)	(NA)	(NA)	(NA)	(NA)	(NA)
2013	(D)	(D)	1,110.00	(D)	(D)	32,595
Nectarines ⁴						
California						
2011	590.00	(X)	590.00	127,440	(X)	127,440
2012	777.00	(X)	777.00	139,860	(X)	139,860
2013	780.00	(X)	780.00	117,000	(X)	117,000
Washington						
2011	384.00	(X)	384.00	3,533	(X)	3,533
2012	567.00	(X)	567.00	5,046	(X)	5,046
2013	426.00	(X)	426.00	5,155	(X)	5,155
United States						
2011	582.00	(X)	582.00	130,973	(X)	130,973
2012	767.00	(X)	767.00	144,906	(X)	144,906
2013	754.00	(X)	754.00	122,155	(X)	122,155
Olives						
California						
2011	(X)	733.00	733.00	(X)	52,168	52,168
2012	(X)	813.00	813.00	(X)	130,038	130,038
2013	(X)	821.00	821.00	(X)	136,231	136,231
Plums						
California						
2011	(D)	(D)	402.00	(D)	(D)	64,320
2012	(D)	(D)	695.00	(D)	(D)	79,940
2013	(D)	(D)	665.00	(D)	(D)	68,475

See footnote(s) at end of table.

--continued

Other Fruit Bearing Acreage, Yield, Production, Utilization, Price, and Value by Crop – States and United States: 2011-2013 (continued)

Crop, State, and season	Bearing acreage	Yield per acre ¹	Production		Utilization	
			Total	Utilized	Fresh	Processed
	(acres)	(tons)	(tons)	(tons)	(tons)	(tons)
Prunes and plums						
Idaho						
2011	510	5.49	2,800	2,500	(D)	(D)
2012	480	5.63	2,700	2,300	(D)	(D)
2013	400	6.00	2,400	2,350	(D)	(D)
Michigan						
2011	500	3.20	1,600	1,600	(D)	(D)
2012	500	0.13	65	65	(D)	(D)
2013	500	3.78	1,890	1,890	(D)	(D)
Oregon						
2011	1,300	3.77	4,900	4,800	1,700	3,100
2012	1,300	5.52	7,170	6,470	3,220	3,250
2013	1,300	5.23	6,800	6,250	2,620	3,630
Washington						
2011	500	8.00	4,000	4,000	(D)	(D)
2012	500	6.60	3,300	3,300	(D)	(D)
2013	400	5.88	2,350	2,300	(D)	(D)
4-State total						
2011	2,810	4.73	13,300	12,900	7,030	5,870
2012	2,780	4.76	13,235	12,135	7,330	4,805
2013	2,600	5.17	13,440	12,790	6,690	6,100
Prunes (dried basis)						
California						
2011	58,000	2.36	137,000	137,000	-	137,000
2012	55,000	2.51	138,000	138,000	-	138,000
2013	50,000	1.70	85,000	85,000	-	85,000

See footnote(s) at end of table.

--continued

Other Fruit Bearing Acreage, Yield, Production, Utilization, Price, and Value by Crop – States and United States: 2011-2013 (continued)

Crop, State, and season	Price per ton			Value of production		
	Fresh (dollars)	Processed (dollars)	All (dollars)	Fresh (1,000 dollars)	Processed (1,000 dollars)	Total (1,000 dollars)
Prunes and plums						
Idaho						
2011	(D)	(D)	354.00	(D)	(D)	886
2012	(D)	(D)	700.00	(D)	(D)	1,609
2013	(D)	(D)	440.00	(D)	(D)	1,034
Michigan						
2011	(D)	(D)	700.00	(D)	(D)	1,120
2012	(D)	(D)	585.00	(D)	(D)	38
2013	(D)	(D)	510.00	(D)	(D)	964
Oregon						
2011	441.00	310.00	356.00	750	960	1,710
2012	813.00	265.00	538.00	2,618	860	3,478
2013	644.00	375.00	488.00	1,687	1,360	3,047
Washington						
2011	(D)	(D)	263.00	(D)	(D)	1,051
2012	(D)	(D)	432.00	(D)	(D)	1,427
2013	(D)	(D)	502.00	(D)	(D)	1,155
4-State total						
2011	482.00	235.00	370.00	3,389	1,378	4,767
2012	745.00	228.00	540.00	5,458	1,094	6,552
2013	612.00	345.00	485.00	4,097	2,103	6,200
Prunes (dried basis)						
California						
2011	(X)	1,310.00	1,310.00	(X)	179,470	179,470
2012	(X)	1,330.00	1,330.00	(X)	183,540	183,540
2013	(X)	1,700.00	1,700.00	(X)	144,500	144,500

- Represents zero.

(D) Withheld to avoid disclosing data for individual operations.

(NA) Not available.

(X) Not applicable.

¹ Yield is based on total production.

² Apricot processed price excludes dried. Processing value includes dried.

³ Small quantities of canned figs are included in fresh to avoid disclosure of individual operations.

⁴ Small quantities of processed nectarines are included in fresh to avoid disclosure of individual operations.

Other Unutilized Fruit Production by Crop – States and United States: 2011-2013

Crop and State	Unharvested production			Harvested not sold		
	2011	2012	2013	2011	2012	2013
	(tons)	(tons)	(tons)	(tons)	(tons)	(tons)
Apricots						
Utah	20	10	7	10	20	-
Kiwifruit						
California	-	-	-	1,000	2,500	700
Prunes and plums						
Idaho	300	400	40	-	-	10
Oregon	100	700	540	-	-	10
Washington	-	-	50	-	-	-
United States	400	1,100	630	-	-	20

- Represents zero.

Other Processed Fruit Utilization and Price by Crop and Use – States and United States: 2011-2013

Crop, use, and State	Quantity			Price per ton		
	2011	2012	2013	2011	2012	2013
	(tons)	(tons)	(tons)	(dollars)	(dollars)	(dollars)
Apricots (California)						
Canned	17,150	16,500	14,550	330.00	419.00	460.00
Dried, fresh basis	12,000	9,500	10,000	410.00	315.00	322.00
Figs (California)						
Dried, fresh basis	34,700	34,700	27,900	411.00	(NA)	501.00
Olives (California)						
Canned	26,500	78,500	78,800	1,060.00	1,110.00	1,110.00
Crushed for Oil	42,000	74,000	75,000	556.00	550.00	600.00
Limited	2,200	6,400	10,500	333.00	346.00	360.00
Undersized	500	1,100	1,700	-13.00	-10.00	-10.00
Prunes and plums ¹						
Canned	1,460	755	1,380	203.00	234.00	380.00
Frozen	560	550	740	280.00	265.00	400.00
Dried and Other	3,850	3,500	3,980	240.21	220.45	322.26

(NA) Not available.

¹ Idaho, Michigan, Oregon, and Washington.

Olive Production by Variety – California: 2011-2013

Variety	2011	2012	2013
	(tons)	(tons)	(tons)
Manzanillo	23,000	71,200	85,000
Sevillano	7,500	22,900	11,000
All other ¹	40,700	65,900	70,000
Total	71,200	160,000	166,000

¹ Includes production for varieties that were or will be used for canned, oil, and other specialty products.

Dry Fruit Production and Price by Use – California: 2011-2013

Crop	Quantity			Price per ton		
	2011	2012	2013	2011	2012	2013
	(tons)	(tons)	(tons)	(dollars)	(dollars)	(dollars)
Fresh basis						
Apricots	12,000	9,500	10,000	410.00	315.00	322.00
Figs	34,700	34,700	27,900	411.00	(NA)	501.00
Grapes						
Raisin	1,761,000	1,444,000	1,831,000	353.00	437.00	363.00
Table	46,000	44,000	53,000	306.00	383.00	319.00
Peaches						
Freestone	4,600	9,800	4,200	42.00	41.00	42.00
Prunes	444,000	436,100	255,000	404.00	421.00	567.00
Dried basis						
Apricots	1,810	1,210	1,080	2,720.00	2,470.00	2,980.00
Figs	11,560	11,560	9,300	1,230.00	(NA)	1,500.00
Standard	10,140	10,140	8,600	1,400.00	(NA)	1,620.00
Substandard	1,420	1,420	700	60.00	(NA)	115.00
Grapes						
Raisin ¹	374,600	335,700	398,000	1,660.00	1,880.00	1,670.00
Table	9,700	10,200	11,500	1,450.00	1,650.00	1,470.00
Peaches						
Freestone	470	1,230	420	411.00	327.00	420.00
Prunes	137,000	138,000	85,000	1,310.00	1,330.00	1,700.00

(NA) Not available.

¹ Includes substandard raisins diverted to other uses.

Fresh Basis Equivalents for Selected Dry Fruits – California: 2011-2013

[Based on 1 ton dry basis equivalent]

Crop	2011	2012	2013
	(tons)	(tons)	(tons)
Apricots	6.63	7.85	9.26
Figs	3.00	3.00	3.00
Grapes			
Raisin	4.70	4.30	4.60
Table	4.74	4.31	4.61
Peaches			
Freestone	9.79	7.97	10.00
Prunes	3.24	3.16	3.00

Strawberry Area Planted, Harvested, Yield, Production, Price, and Value – States and United States: 2011-2013

State	Area planted			Area harvested		
	2011	2012	2013	2011	2012	2013
	(acres)	(acres)	(acres)	(acres)	(acres)	(acres)
California	38,000	38,500	41,500	38,000	38,500	41,500
Florida	9,900	8,900	8,500	9,900	8,700	8,500
Michigan	850	750	850	700	650	750
New York	1,600	1,600	1,600	1,400	1,400	1,400
North Carolina	1,600	1,300	1,200	1,500	1,200	1,100
Ohio	1,100	740	660	730	660	590
Oregon	2,200	2,200	2,000	2,000	2,000	1,700
Pennsylvania	990	920	1,000	990	820	950
Washington	1,500	1,500	1,300	1,500	1,300	1,100
Wisconsin	820	720	700	700	610	600
United States	58,560	57,130	59,310	57,420	55,840	58,190

State	Yield per acre			Production		
	2011	2012	2013	2011	2012	2013
	(cwt)	(cwt)	(cwt)	(1,000 cwt)	(1,000 cwt)	(1,000 cwt)
California	680	720	665	25,846	27,646	27,573
Florida	250	210	220	2,475	1,827	1,870
Michigan	44	51	59	31	33	44
New York	26	23	27	36	32	38
North Carolina	130	135	100	195	162	110
Ohio	36	42	49	26	28	29
Oregon	115	105	98	226	213	167
Pennsylvania	40	51	54	40	42	51
Washington	83	79	79	125	103	87
Wisconsin	57	51	55	40	31	33
United States	506	539	516	29,040	30,117	30,002

State	Price per cwt			Value of production		
	2011	2012	2013	2011	2012	2013
	(dollars)	(dollars)	(dollars)	(1,000 dollars)	(1,000 dollars)	(1,000 dollars)
California	75.20	77.10	79.80	1,943,757	2,130,637	2,200,729
Florida	148.00	110.00	143.00	366,300	200,970	267,410
Michigan	146.00	146.00	161.00	4,522	4,826	7,095
New York	235.00	215.00	203.00	8,460	6,880	7,729
North Carolina	140.00	145.00	148.00	27,300	23,490	16,280
Ohio	210.00	168.00	209.00	5,460	4,704	6,061
Oregon	66.50	71.30	63.70	15,034	15,189	10,634
Pennsylvania	212.00	164.00	223.00	8,480	6,888	11,373
Washington	71.80	100.00	106.00	8,971	10,331	9,226
Wisconsin	161.00	151.00	165.00	6,440	4,681	5,445
United States	82.50	80.00	84.70	2,394,724	2,408,596	2,541,982

Strawberry Utilization, Price, and Value by Utilization – States and United States: 2011-2013

Utilization and State	Production		
	2011	2012	2013
	(1,000 cwt)	(1,000 cwt)	(1,000 cwt)
Fresh market			
California	20,462	21,936	22,398
Florida	2,475	1,827	1,870
Michigan	29	32	(D)
New York	36	32	38
North Carolina	195	162	110
Ohio	26	28	29
Oregon	28	35	22
Pennsylvania	40	42	51
Washington	17	24	(D)
Wisconsin	40	31	33
Other States	(X)	(X)	66
United States	23,348	24,149	24,617
Processing			
California	5,384	5,710	5,175
Michigan	2	1	(D)
Oregon	198	178	145
Washington	108	79	(D)
Other States	(X)	(X)	65
United States	5,692	5,968	5,385

Utilization and State	Price per unit			Value of production		
	2011	2012	2013	2011	2012	2013
	(dollars per cwt)	(dollars per cwt)	(dollars per cwt)	(1,000 dollars)	(1,000 dollars)	(1,000 dollars)
Fresh market						
California	86.10	88.80	90.40	1,761,778	1,947,917	2,024,779
Florida	148.00	110.00	143.00	366,300	200,970	267,410
Michigan	152.00	149.00	(D)	4,408	4,768	(D)
New York	235.00	215.00	203.40	8,460	6,880	7,729
North Carolina	140.00	145.00	148.00	27,300	23,490	16,280
Ohio	210.00	168.00	209.00	5,460	4,704	6,061
Oregon	148.00	139.00	167.00	4,144	4,865	3,674
Pennsylvania	212.00	164.00	223.00	8,480	6,888	11,373
Washington	231.00	177.00	(D)	3,927	4,248	(D)
Wisconsin	161.00	151.00	165.00	6,440	4,681	5,445
Other States	(X)	(X)	175.00	(X)	(X)	11,563
United States	94.10	91.50	95.60	2,196,697	2,209,411	2,354,314
Processing						
California	33.80	32.00	34.00	181,979	182,720	175,950
Michigan	57.00	58.00	(D)	114	58	(D)
Oregon	55.00	58.00	48.00	10,890	10,324	6,960
Washington	46.70	77.00	(D)	5,044	6,083	(D)
Other States	(X)	(X)	73.20	(X)	(X)	4,758
United States	34.80	33.40	34.90	198,027	199,185	187,668

(D) Withheld to avoid disclosing data for individual operations.

(X) Not applicable.

Berry Area Harvested, Yield, Production, Utilization, Price, and Value by Crop – States and United States: 2011-2013

Crop, State, and year	Area harvested (acres)	Yield per acre ¹ (pounds)	Production		Utilization		
			Total (1,000 pounds)	Utilized (1,000 pounds)	Fresh (1,000 pounds)	Processed (1,000 pounds)	
Cultivated blueberries							
Alabama ²							
2011	400	1,250	700	500	500	-	
2012	450	1,560	850	700	700	-	
2013	480	1,150	700	550	550	-	
Arkansas ²							
2011	250	1,600	500	400	400	-	
2012	250	1,600	500	400	400	-	
2013	230	1,570	400	360	360	-	
California ²							
2011	4,300	9,790	42,100	42,100	42,100	-	
2012	4,700	8,700	40,900	40,900	40,900	-	
2013	4,800	10,700	51,400	51,400	(D)	(D)	
Florida ²							
2011	3,800	5,630	23,400	21,400	21,400	-	
2012	4,500	3,800	18,100	17,100	17,100	-	
2013	4,300	4,530	21,500	19,500	19,500	-	
Georgia							
2011	12,000	5,170	65,000	62,000	39,000	23,000	
2012	15,000	4,670	77,000	70,000	37,000	33,000	
2013	13,500	4,370	68,000	59,000	29,000	30,000	
Indiana							
2011	650	2,460	1,600	1,600	1,300	300	
2012	400	3,750	1,500	1,500	1,000	500	
2013	550	5,820	3,200	3,200	(D)	(D)	
Michigan							
2011	19,200	3,750	72,000	72,000	34,000	38,000	
2012	19,700	4,420	87,000	87,000	33,000	54,000	
2013	19,000	6,000	114,000	114,000	48,000	66,000	
Mississippi							
2011	2,700	3,890	10,500	10,500	4,000	6,500	
2012	2,700	3,330	9,000	9,000	3,500	5,500	
2013	2,100	3,480	7,300	7,300	3,000	4,300	
New Jersey							
2011	7,700	8,050	62,000	62,000	47,000	15,000	
2012	7,500	6,870	54,000	51,500	43,000	8,500	
2013	8,800	5,450	50,160	47,940	43,500	4,440	
New York ²							
2011	900	2,000	1,900	1,800	1,800	-	
2012	900	1,890	2,000	1,700	1,700	-	
2013	900	1,100	1,110	990	990	-	
North Carolina							
2011	5,800	6,240	37,000	36,200	28,600	7,600	
2012	5,700	7,020	40,500	40,000	30,000	10,000	
2013	5,700	7,020	42,400	40,000	32,000	8,000	
Oregon							
2011	7,800	8,400	65,500	65,500	36,700	28,800	
2012	7,900	9,110	72,000	72,000	37,500	34,500	
2013	9,600	9,320	89,500	89,500	42,000	47,500	
Washington							
2011	7,000	8,710	61,000	61,000	30,500	30,500	
2012	8,000	8,750	70,000	70,000	35,000	35,000	
2013	9,000	9,070	81,600	81,600	23,600	58,000	
Other States							
2011	-	-	-	-	-	-	
2012	-	-	-	-	-	-	
2013	-	-	-	-	41,800	12,800	
United States							
2011	72,500	6,030	443,200	437,000	287,300	149,700	
2012	77,700	5,940	473,350	461,800	280,800	181,000	
2013	78,960	6,530	531,270	515,340	284,300	231,040	

See footnote(s) at end of table.

--continued

Berry Area Harvested, Yield, Production, Utilization, Price, and Value by Crop – States and United States: 2011-2013 (continued)

Crop, State, and year	Price per pound			Value of production		
	Fresh	Processed	All	Fresh	Processed	Total
	(dollars)	(dollars)	(dollars)	(1,000 dollars)	(1,000 dollars)	(1,000 dollars)
Cultivated blueberries						
Alabama ²						
2011	1.700	(X)	1.700	850	(X)	850
2012	2.120	(X)	2.120	1,484	(X)	1,484
2013	1.990	(X)	1.990	1,095	(X)	1,095
Arkansas ²						
2011	1.730	(X)	1.730	692	(X)	692
2012	1.650	(X)	1.650	660	(X)	660
2013	2.190	(X)	2.190	788	(X)	788
California ²						
2011	2.410	(X)	2.410	101,461	(X)	101,461
2012	3.270	(X)	3.270	133,743	(X)	133,743
2013	(D)	(D)	2.480	(D)	(D)	127,520
Florida ²						
2011	3.230	(X)	3.230	69,122	(X)	69,122
2012	3.630	(X)	3.630	62,073	(X)	62,073
2013	3.920	(X)	3.920	76,440	(X)	76,440
Georgia						
2011	1.850	0.920	1.510	72,150	21,160	93,310
2012	2.000	0.610	1.340	74,000	20,130	94,130
2013	2.280	0.570	1.410	66,120	17,100	83,220
Indiana						
2011	1.950	1.150	1.800	2,535	345	2,880
2012	2.320	1.000	1.880	2,320	500	2,820
2013	(D)	(D)	1.390	(D)	(D)	4,460
Michigan						
2011	2.150	1.200	1.650	73,100	45,600	118,700
2012	2.000	1.050	1.410	66,000	56,700	122,700
2013	1.700	0.600	1.060	81,600	39,600	121,200
Mississippi						
2011	2.000	1.350	1.600	8,000	8,775	16,775
2012	2.400	1.300	1.730	8,400	7,150	15,550
2013	2.100	1.050	1.480	6,300	4,515	10,815
New Jersey						
2011	1.600	1.300	1.530	75,200	19,500	94,700
2012	1.640	1.210	1.570	70,520	10,285	80,805
2013	1.220	0.840	1.180	53,070	3,730	56,800
New York ²						
2011	2.200	(X)	2.200	3,960	(X)	3,960
2012	2.290	(X)	2.290	3,893	(X)	3,893
2013	2.150	(X)	2.150	2,129	(X)	2,129
North Carolina						
2011	2.000	1.200	1.830	57,200	9,120	66,320
2012	2.100	0.800	1.780	63,000	8,000	71,000
2013	1.900	0.600	1.640	60,800	4,800	65,600
Oregon						
2011	1.990	1.520	1.780	73,033	43,776	116,809
2012	2.040	0.900	1.490	76,500	31,050	107,550
2013	1.330	0.810	1.050	55,860	38,475	94,335
Washington						
2011	2.560	1.440	2.000	78,080	43,920	122,000
2012	1.490	0.950	1.220	52,150	33,250	85,400
2013	1.410	0.660	0.877	33,276	38,280	71,556
Other States						
2011	-	-	-	-	-	-
2012	-	-	-	-	-	-
2013	2.940	0.710	-	122,900	9,080	-
United States						
2011	2.140	1.280	1.850	615,383	192,196	807,579
2012	2.190	0.923	1.690	614,743	167,065	781,808
2013	1.970	0.673	1.390	560,378	155,580	715,958

See footnote(s) at end of table.

--continued

Berry Area Harvested, Yield, Production, Utilization, Price, and Value by Crop – States and United States: 2011-2013 (continued)

Crop, State, and year	Area harvested	Yield per acre ¹	Production		Utilization	
			Total	Utilized	Fresh	Processed
	(acres)	(pounds)	(1,000 pounds)	(1,000 pounds)	(1,000 pounds)	(1,000 pounds)
Wild blueberries						
Maine						
2011	(X)	(X)	79,900	79,900	600	79,300
2012	(X)	(X)	91,100	91,100	500	90,600
2013	(X)	(X)	87,890	87,130	530	86,600
Boysenberries						
Oregon						
2011	500	5,200	2,625	2,600	100	2,500
2012	400	4,880	1,950	1,950	50	1,900
2013	500	4,600	2,300	2,300	(D)	(D)
Black raspberries						
Oregon						
2011	1,100	2,030	2,230	2,230	30	2,200
2012	900	2,390	2,150	2,150	50	2,100
2013	1,000	2,650	2,650	2,650	50	2,600
Red raspberries						
Oregon						
2011	1,200	5,000	6,000	6,000	1,000	5,000
2012	1,200	5,500	6,600	6,600	800	5,800
2013	1,300	4,120	5,350	5,350	650	4,700
Washington						
2011	9,800	7,380	72,300	72,300	400	71,900
2012	9,800	6,400	62,700	62,700	450	62,250
2013	9,900	6,880	68,100	68,100	750	67,350
United States						
2011	11,000	7,120	78,300	78,300	1,400	76,900
2012	11,000	6,300	69,300	69,300	1,250	68,050
2013	11,200	6,560	73,450	73,450	1,400	72,050
All raspberries						
California						
2011	5,400	20,000	108,000	108,000	(D)	(D)
2012	5,400	18,000	97,200	97,200	(D)	(D)
2013	5,600	16,800	94,100	94,100	(D)	(D)

See footnote(s) at end of table.

--continued

Berry Area Harvested, Yield, Production, Utilization, Price, and Value by Crop – States and United States: 2011-2013 (continued)

Crop, State, and year	Price per pound			Value of production		
	Fresh (dollars)	Processed (dollars)	All (dollars)	Fresh (1,000 dollars)	Processed (1,000 dollars)	Total (1,000 dollars)
Wild blueberries						
Maine						
2011	2.200	0.900	0.910	1,320	71,370	72,690
2012	2.250	0.750	0.758	1,125	67,950	69,075
2013	1.950	0.750	0.757	1,034	64,950	65,984
Boysenberries						
Oregon						
2011	1.880	0.980	1.010	188	2,450	2,638
2012	1.730	1.030	1.050	87	1,957	2,044
2013	1.280	1.070	1.090	(D)	(D)	2,503
Black raspberries						
Oregon						
2011	2.540	2.470	2.470	76	5,434	5,510
2012	2.480	2.650	2.650	124	5,565	5,689
2013	2.120	2.600	2.590	106	6,760	6,866
Red raspberries						
Oregon						
2011	1.800	0.920	1.070	1,800	4,600	6,400
2012	1.780	0.900	1.010	1,424	5,220	6,644
2013	2.120	1.060	1.190	1,378	4,982	6,360
Washington						
2011	2.990	0.600	0.613	1,196	43,140	44,336
2012	2.540	0.590	0.604	1,143	36,728	37,871
2013	1.860	0.830	0.841	1,395	55,901	57,296
United States						
2011	2.140	0.621	0.648	2,996	47,740	50,736
2012	2.050	0.616	0.642	2,567	41,948	44,515
2013	1.980	0.845	0.867	2,773	60,883	63,656
All raspberries						
California						
2011	(D)	(D)	2.070	(D)	(D)	223,200
2012	(D)	(D)	2.470	(D)	(D)	239,820
2013	(D)	(D)	2.540	(D)	(D)	239,020

(D) Withheld to avoid disclosing data for individual operations.

¹ Yield is based on utilized production.

² Small quantities of processed blueberries are included in fresh to avoid disclosure of individual operations.

Unutilized Berry Production – States and United States: 2011-2013

Crop and State	Unharvested production			Harvested not sold		
	2011	2012	2013	2011	2012	2013
	(1,000 pounds)	(1,000 pounds)	(1,000 pounds)	(1,000 pounds)	(1,000 pounds)	(1,000 pounds)
Cultivated blueberries						
Alabama	180	120	90	20	30	60
Arkansas	10	10	10	90	90	30
Florida	1,200	500	2,000	800	500	-
Georgia	3,000	6,000	9,000	-	1,000	-
New Jersey	-	2,500	2,220	-	-	-
New York	100	300	100	-	-	20
North Carolina	800	500	1,550	-	-	850
United States	5,290	9,930	14,970	910	1,620	960
Wild blueberries						
Maine	-	-	750	-	-	10
Boysenberries						
Oregon	25	-	-	-	-	-

- Represents zero.

Unutilized Cranberry Production – States and United States: 2011-2013

Crop and State	Unharvested production			Harvested not sold		
	2011	2012	2013	2011	2012	2013
	(barrels)	(barrels)	(barrels)	(barrels)	(barrels)	(barrels)
Cranberries						
Massachusetts	-	-	11,400	-	-	12,100
New Jersey	-	-	1,300	-	-	3,900
Wisconsin	-	-	14,000	-	-	34,000
United States	-	-	26,700	-	-	50,000

- Represents zero.

Blackberry Area Harvested, Yield, Production, Utilization, Price, and Value by Variety – Oregon: 2011-2013

Variety and year	Area harvested	Yield per acre ¹	Production		Utilization	
			Total	Utilized	Fresh	Processed
	(acres)	(pounds)	(1,000 pounds)	(1,000 pounds)	(1,000 pounds)	(1,000 pounds)
Cultivated blackberries						
Marion						
2011	4,000	6,730	27,100	26,900	900	26,000
2012	3,500	7,270	25,460	25,460	260	25,200
2013	3,200	8,500	27,400	27,200	400	26,800
Evergreen						
2011	400	7,200	2,880	2,880	30	2,850
2012	500	8,240	4,120	4,120	20	4,100
2013	400	7,300	2,920	2,920	20	2,900
Other						
2011	2,900	7,900	22,900	22,900	3,100	19,800
2012	2,800	8,550	23,940	23,940	2,640	21,300
2013	2,400	8,710	21,300	20,900	2,300	18,600
All						
2011	7,300	7,220	52,880	52,680	4,030	48,650
2012	6,800	7,870	53,520	53,520	2,920	50,600
2013	6,000	8,500	51,620	51,020	2,720	48,300

¹ Yield is based on utilized production.

Blackberry Price and Value by Variety – Oregon: 2011-2013

Variety and year	Price per pound			Value of production		
	Fresh	Processed	All	Fresh	Processed	Total
	(dollars)	(dollars)	(dollars)	(1,000 dollars)	(1,000 dollars)	(1,000 dollars)
Cultivated blackberries						
Marion						
2011	1.210	0.780	0.794	1,089	20,280	21,369
2012	1.130	0.800	0.803	294	20,160	20,454
2013	1.490	0.800	0.810	596	21,440	22,036
Evergreen						
2011	1.500	0.690	0.699	45	1,967	2,012
2012	1.300	0.700	0.703	26	2,870	2,896
2013	2.000	0.670	0.679	40	1,943	1,983
Other						
2011	1.660	0.720	0.847	5,146	14,256	19,402
2012	2.210	0.720	0.884	5,834	15,336	21,170
2013	1.950	0.740	0.873	4,485	13,764	18,249
All						
2011	1.560	0.750	0.812	6,280	36,503	42,783
2012	2.110	0.758	0.832	6,154	38,366	44,520
2013	1.880	0.769	0.828	5,121	37,147	42,268

Unutilized Cultivated Blackberry Production by Variety – Oregon: 2011-2013

Variety	Unharvested production			Harvested not sold		
	2011	2012	2013	2011	2012	2013
	(1,000 pounds)	(1,000 pounds)	(1,000 pounds)	(1,000 pounds)	(1,000 pounds)	(1,000 pounds)
Cultivated blackberries						
Marion	200	-	200	-	-	-
Other	-	-	400	-	-	-
All	200	-	600	-	-	-

- Represents zero.

Sweet Cherry Bearing Acreage, Yield, Production, Utilization, Price, and Value – States and United States: 2011-2013

State and year	Bearing acreage	Yield per acre ¹	Production		Utilization	
			Total	Utilized	Fresh	Processed
	(acres)	(tons)	(tons)	(tons)	(tons)	(tons)
California						
2011	30,000	2.27	68,000	66,000	57,000	9,000
2012	31,000	2.98	92,300	89,300	78,000	11,300
2013	33,000	2.48	82,000	78,500	70,000	8,500
Idaho						
2011	900	3.11	2,800	2,800	(D)	(D)
2012	900	4.00	3,600	3,300	(D)	(D)
2013	600	3.83	2,300	2,200	(D)	(D)
Michigan						
2011	6,500	2.86	18,600	18,600	2,200	16,400
2012	6,500	0.65	4,250	4,250	120	4,130
2013	6,600	3.47	22,900	21,800	1,200	20,600
Montana						
2011	720	2.80	2,015	1,650	(D)	(D)
2012	690	3.26	2,250	1,395	(D)	(D)
2013	700	2.88	2,015	1,785	(D)	(D)
New York						
2011	700	1.00	700	670	(D)	(D)
2012	700	0.43	300	290	(D)	(D)
2013	700	1.49	1,045	845	(D)	(D)
Oregon						
2011	12,500	3.64	45,500	43,800	29,600	14,200
2012	12,500	4.48	56,000	54,600	39,500	15,100
2013	13,000	4.00	52,000	46,000	32,000	14,000
Utah						
2011	500	1.60	800	770	330	440
2012	500	2.60	1,300	1,280	700	580
2013	500	1.66	830	820	610	210
Washington						
2011	34,000	5.76	196,000	196,000	165,000	31,000
2012	34,000	7.76	264,000	264,000	210,000	54,000
2013	35,000	4.83	169,000	144,000	110,000	34,000
Other States						
2011	(X)	(X)	(X)	(X)	4,790	330
2012	(X)	(X)	(X)	(X)	4,235	750
2013	(X)	(X)	(X)	(X)	4,140	690
United States						
2011	85,820	3.90	334,415	330,290	258,920	71,370
2012	86,790	4.89	424,000	418,415	332,555	85,860
2013	90,100	3.69	332,090	295,950	217,950	78,000

See footnote(s) at end of table.

--continued

Sweet Cherry Bearing Acreage, Yield, Production, Utilization, Price, and Value – States and United States: 2011-2013 (continued)

State and year	Price per ton			Value of production		
	Fresh (dollars)	Processed (dollars)	All (dollars)	Fresh (1,000 dollars)	Processed (1,000 dollars)	All (1,000 dollars)
California						
2011	3,430.00	193.00	2,990.00	195,510	1,740	197,250
2012	3,270.00	240.00	2,890.00	255,060	2,712	257,772
2013	3,730.00	572.00	3,390.00	261,100	4,866	265,966
Idaho						
2011	(D)	(D)	2,620.00	(D)	(D)	7,337
2012	(D)	(D)	2,640.00	(D)	(D)	8,706
2013	(D)	(D)	2,550.00	(D)	(D)	5,603
Michigan						
2011	2,410.00	777.00	970.00	5,302	12,740	18,042
2012	4,280.00	1,360.00	1,440.00	514	5,619	6,133
2013	2,290.00	887.00	964.00	2,748	18,264	21,012
Montana						
2011	(D)	(D)	2,470.00	(D)	(D)	4,068
2012	(D)	(D)	1,450.00	(D)	(D)	2,019
2013	(D)	(D)	2,070.00	(D)	(D)	3,702
New York						
2011	(D)	(D)	3,140.00	(D)	(D)	2,106
2012	(D)	(D)	3,700.00	(D)	(D)	1,073
2013	(D)	(D)	3,750.00	(D)	(D)	3,168
Oregon						
2011	2,240.00	800.00	1,770.00	66,304	11,360	77,664
2012	1,517.00	972.00	1,370.00	59,922	14,684	74,606
2013	2,500.00	805.00	1,980.00	80,000	11,272	91,272
Utah						
2011	2,760.00	502.00	1,470.00	911	221	1,132
2012	2,300.00	421.00	1,450.00	1,610	244	1,854
2013	(D)	(D)	2,490.00	1,915	126	2,041
Washington						
2011	3,120.00	393.00	2,690.00	514,800	12,186	526,986
2012	2,140.00	773.00	1,860.00	449,400	41,748	491,148
2013	3,190.00	827.00	2,630.00	350,900	28,134	379,034
Other States						
2011	2,790.00	412.00	(X)	13,375	136	(X)
2012	2,710.00	429.00	(X)	11,476	322	(X)
2013	2,910.00	593.00	(X)	12,064	409	(X)
United States						
2011	3,080.00	538.00	2,530.00	796,202	38,383	834,585
2012	2,340.00	761.00	2,020.00	777,982	65,329	843,311
2013	3,250.00	809.00	2,610.00	708,727	63,071	771,798

(D) Withheld to avoid disclosing data for individual operations.

(X) Not applicable.

¹ Yield is based on total production.

Tart Cherry Bearing Acreage, Yield, Production, Utilization, Price, and Value – States and United States: 2011-2013

State and year	Bearing acreage	Yield per acre ¹	Production		Utilization	
			Total	Utilized	Fresh	Processed
	(acres)	(pounds)	(million pounds)	(million pounds)	(million pounds)	(million pounds)
Michigan						
2011	26,700	5,900	157.5	156.7	0.2	156.5
2012	27,300	425	11.6	11.6	0.1	11.5
2013	28,000	7,810	218.7	215.8	0.3	215.5
New York						
2011	1,500	3,930	5.9	5.9	(D)	(D)
2012	1,500	1,800	2.7	2.7	(D)	(D)
2013	1,600	7,500	12.0	12.0	(D)	(D)
Oregon						
2011	650	3,850	2.5	2.5	(D)	(D)
2012	650	1,540	1.0	1.0	(D)	(D)
2013	650	6,620	4.3	4.3	(D)	(D)
Pennsylvania						
2011	550	5,820	3.2	3.1	(D)	(D)
2012	550	6,000	3.3	3.2	(D)	(D)
2013	500	4,420	2.2	2.2	(D)	(D)
Utah						
2011	3,300	10,600	35.0	34.5	-	34.5
2012	3,300	12,100	40.0	40.0	-	40.0
2013	2,800	9,570	26.8	26.8	-	26.8
Washington						
2011	1,600	13,100	20.9	20.9	(D)	(D)
2012	1,600	15,500	24.8	24.8	(D)	(D)
2013	2,100	8,520	17.9	17.9	(D)	(D)
Wisconsin						
2011	1,700	3,940	6.7	6.7	0.1	6.6
2012	1,600	1,060	1.7	1.7	0.1	1.6
2013	2,000	6,150	12.3	12.1	0.3	11.8
Other States						
2011	(X)	(X)	(X)	(X)	0.2	32.2
2012	(X)	(X)	(X)	(X)	0.2	31.5
2013	(X)	(X)	(X)	(X)	0.6	35.8
United States						
2011	36,000	6,440	231.7	230.3	0.5	229.8
2012	36,500	2,330	85.1	85.0	0.4	84.6
2013	37,650	7,810	294.2	291.1	1.2	289.9

See footnote(s) at end of table.

--continued

Tart Cherry Bearing Acreage, Yield, Production, Utilization, Price, and Value – States and United States: 2011-2013 (continued)

State and year	Price per pound			Value of production		
	Fresh (dollars)	Processed (dollars)	All (dollars)	Fresh (1,000 dollars)	Processed (1,000 dollars)	All (1,000 dollars)
Michigan						
2011	1.250	0.300	0.301	250	46,960	47,210
2012	2.400	1.100	1.110	240	12,640	12,880
2013	0.847	0.345	0.345	254	74,261	74,515
New York						
2011	(D)	(D)	0.242	(D)	(D)	1,426
2012	(D)	(D)	1.050	(D)	(D)	2,844
2013	(D)	(D)	0.358	(D)	(D)	4,295
Oregon						
2011	(D)	(D)	0.340	(D)	(D)	850
2012	(D)	(D)	0.951	(D)	(D)	951
2013	(D)	(D)	0.344	(D)	(D)	1,480
Pennsylvania						
2011	(D)	(D)	0.371	(D)	(D)	1,150
2012	(D)	(D)	1.110	(D)	(D)	3,560
2013	(D)	(D)	0.390	(D)	(D)	862
Utah						
2011	(X)	0.290	0.290	(X)	10,005	10,005
2012	(X)	0.510	0.510	(X)	20,400	20,400
2013	(X)	0.476	0.476	(X)	12,761	12,761
Washington						
2011	(D)	(D)	0.312	(D)	(D)	6,521
2012	(D)	(D)	0.323	(D)	(D)	8,000
2013	(D)	(D)	0.344	(D)	(D)	6,164
Wisconsin						
2011	0.646	0.280	0.285	65	1,845	1,910
2012	1.250	1.100	1.110	125	1,760	1,885
2013	1.570	0.326	0.357	471	3,847	4,318
Other States						
2011	1.370	0.300	(X)	273	9,674	(X)
2012	1.970	0.475	(X)	394	14,961	(X)
2013	2.060	0.323	(X)	1,234	11,567	(X)
United States						
2011	1.180	0.298	0.300	588	68,484	69,072
2012	1.900	0.588	0.594	759	49,761	50,520
2013	1.630	0.353	0.359	1,959	102,436	104,395

(D) Withheld to avoid disclosing data for individual operations.

(X) Not applicable.

¹ Yield is based on total production.

Sweet and Tart Cherry Processed Utilization and Price by Use – States and United States: 2011-2013

Crop, utilization, and State	Quantity			Price per unit		
	2011	2012	2013	2011	2012	2013
	(tons)	(tons)	(tons)	(dollars per ton)	(dollars per ton)	(dollars per ton)
Sweet cherries						
Canned						
Michigan	1,800	(D)	(D)	1,000.00	(D)	(D)
Oregon	1,450	(D)	(D)	1,100.00	(D)	(D)
Washington	3,000	3,000	2,000	968.00	1,100.00	1,160.00
Other States ¹	(X)	2,900	2,520	(X)	1,190.00	1,090.00
United States	6,250	5,900	4,520	1,010.00	1,150.00	1,120.00
Brined						
Michigan	9,150	1,350	13,100	600.00	1,050.00	730.00
Oregon	10,500	9,600	10,000	750.00	950.00	780.00
Utah	440	580	210	502.00	420.00	(D)
Washington	14,000	29,000	16,500	480.00	750.00	750.00
Other States ¹	5,535	6,535	5,135	241.00	244.00	788.00
United States	39,625	47,065	44,945	546.00	725.00	752.00
Other ²						
Michigan	5,450	2,780	7,500	1,000.00	1,510.00	1,160.00
Oregon	2,250	5,500	4,000	840.00	1,010.00	868.00
Washington	14,000	22,000	15,500	183.00	759.00	867.00
Other States ¹	3,795	2,615	1,535	138.00	252.00	299.00
United States	25,495	32,895	28,535	409.00	697.00	853.00
	(million pounds)	(million pounds)	(million pounds)	(dollars per pound)	(dollars per pound)	(dollars per pound)
Tart cherries						
Canned						
Michigan	34.0	3.0	36.3	0.340	1.160	0.360
Other States ¹	4.4	3.5	2.8	0.308	1.080	0.350
United States	38.4	6.5	39.1	0.336	1.120	0.359
Frozen						
Michigan	101.0	8.0	117.5	0.295	1.080	0.341
Utah	34.5	40.0	(D)	0.290	0.510	(D)
Other States ¹	18.6	11.8	40.9	0.260	0.533	0.401
United States	154.1	59.8	158.4	0.290	0.591	0.357
Other ³						
Michigan	21.5	0.5	10.6	0.261	1.040	0.310
Other States ¹	15.8	17.8	30.7	0.337	0.373	0.222
United States	37.3	18.3	41.3	0.293	0.392	0.250

(D) Withheld to avoid disclosing data for individual operations.

(X) Not applicable.

¹ Includes data withheld above and/or data for States not listed in this table.

² Includes California canned utilization and other processed utilizations (frozen, juice, etc.) from all States.

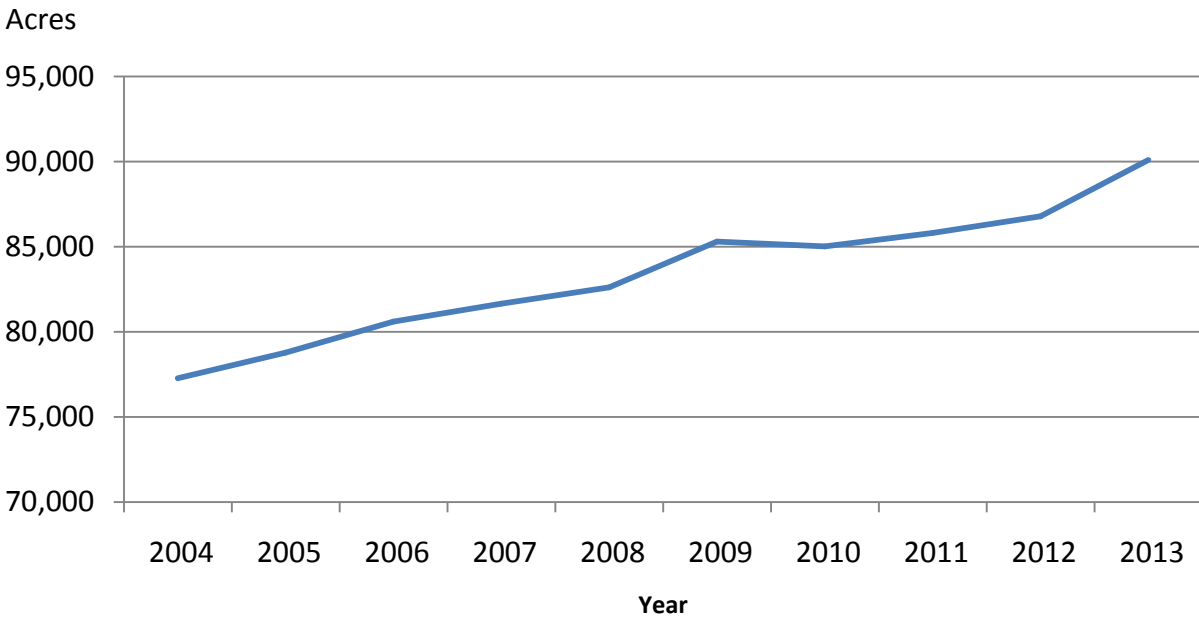
³ Juice, wine, brined, and dried.

Unutilized Cherry Production by Crop – States and United States: 2011-2013

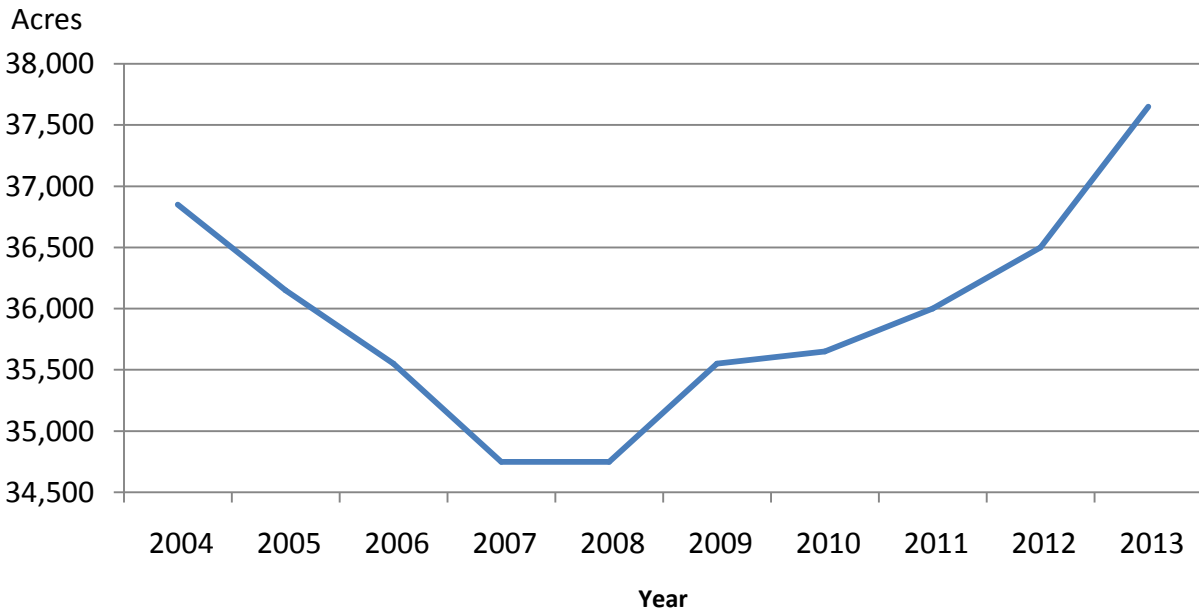
Crop and State	Unharvested production			Harvested not sold		
	2011 (tons)	2012 (tons)	2013 (tons)	2011 (tons)	2012 (tons)	2013 (tons)
Sweet Cherries						
California	-	-	-	2,000	3,000	3,500
Idaho	-	300	100	-	-	-
Michigan	-	-	600	-	-	500
Montana	200	650	160	165	205	70
New York	20	10	180	10	-	20
Oregon	1,500	800	6,000	200	600	-
Utah	10	10	10	20	10	-
Washington	-	-	22,000	-	-	3,000
United States	1,730	1,770	29,050	2,395	3,815	7,090
	(million pounds)	(million pounds)	(million pounds)	(million pounds)	(million pounds)	(million pounds)
Tart cherries						
Michigan	0.4	-	0.1	0.4	-	2.8
New York	-	-	-	-	-	-
Pennsylvania	-	-	-	0.1	0.1	-
Utah	-	-	-	0.5	-	-
Washington	-	-	-	-	-	-
Wisconsin	-	-	0.1	-	-	0.1
United States	0.4	-	0.2	1.0	0.1	2.9

- Represents zero.

Sweet Cherry Bearing Acreage United States: 2004-2013



Tart Cherry Bearing Acreage United States: 2004-2013



Cranberry Area Harvested, Yield, Production, Utilization, Price, and Value – States and United States: 2011-2013

[A barrel weighs 100 pounds]

Year and State	Area harvested	Yield per acre	Production		Utilization	
			Total	Utilized	Fresh	Processed
	(acres)	(barrels)	(barrels)	(barrels)	(barrels)	(barrels)
Massachusetts						
2011	13,000	178.2	2,317,000	2,317,000	110,000	2,207,000
2012	13,000	163.3	2,123,000	2,123,000	83,000	2,040,000
2013	13,200	138.5	1,852,300	1,828,800	88,800	1,740,000
New Jersey ¹						
2011	3,000	170.0	510,000	510,000	-	510,000
2012	3,000	183.3	550,000	550,000	-	550,000
2013	3,000	180.8	547,500	542,300	-	542,300
Oregon ¹						
2011	2,800	128.9	361,000	361,000	-	361,000
2012	2,900	139.7	405,000	405,000	-	405,000
2013	3,000	130.0	390,000	390,000	-	390,000
Washington						
2011	1,700	68.1	115,700	115,700	20,500	95,200
2012	1,700	80.6	137,000	137,000	41,000	96,000
2013	1,700	89.4	152,000	152,000	40,000	112,000
Wisconsin						
2011	18,000	245.0	4,410,000	4,410,000	110,000	4,300,000
2012	19,700	245.2	4,830,000	4,830,000	130,000	4,700,000
2013	21,100	282.8	6,015,600	5,967,600	192,600	5,775,000
United States						
2011	38,500	200.4	7,713,700	7,713,700	240,500	7,473,200
2012	40,300	199.6	8,045,000	8,045,000	254,000	7,791,000
2013	42,000	211.4	8,957,400	8,880,700	321,400	8,559,300
Year and State	Price per barrel ²			Value of utilized production		
	Fresh	Processed	All	Fresh	Processed	All
	(dollars)	(dollars)	(dollars)	(1,000 dollars)	(1,000 dollars)	(1,000 dollars)
Massachusetts						
2011	64.80	43.70	44.70	7,128	96,446	103,574
2012	69.90	46.10	47.00	5,802	94,044	99,846
2013	50.60	30.60	31.60	4,493	53,244	57,737
New Jersey ¹						
2011	(X)	51.00	51.00	(X)	26,010	26,010
2012	(X)	54.40	54.40	(X)	29,920	29,920
2013	(X)	37.50	37.50	(X)	20,336	20,336
Oregon ¹						
2011	(X)	39.50	39.50	(X)	14,260	14,260
2012	(X)	40.40	40.40	(X)	16,362	16,362
2013	(X)	30.60	30.60	(X)	11,934	11,934
Washington						
2011	71.60	51.40	55.00	1,468	4,893	6,361
2012	82.40	55.50	63.50	3,378	5,328	8,706
2013	56.80	38.10	43.00	2,272	4,267	6,539
Wisconsin						
2011	71.60	43.60	44.30	7,876	187,480	195,356
2012	82.40	46.80	47.80	10,712	219,960	230,672
2013	78.50	30.40	32.00	15,119	175,560	190,679
United States						
2011	68.50	44.00	44.80	16,472	329,089	345,561
2012	78.30	46.90	47.90	19,892	365,614	385,506
2013	68.10	31.00	32.30	21,884	265,341	287,225

- Represents zero.

(D) Withheld to avoid disclosing data for individual operations.

(X) Not applicable.

¹ Small quantities of fresh cranberries are included in processed to avoid disclosure of individual operations.

² Weighted average of co-op and independent sales. Co-op prices represent pool proceeds less returns for processing non-cranberry products, capital stock dividends, capital stock retains, and other retains.

Grape Bearing Acreage, Yield, Production, Price, and Value – States and United States: 2011-2013

State and type	Bearing acreage			Yield per acre ¹		
	2011	2012	2013	2011	2012	2013
	(acres)	(acres)	(acres)	(tons)	(tons)	(tons)
Arkansas	600	600	720	2.00	2.17	2.50
California	796,000	793,000	820,000	8.39	8.64	9.41
Wine	506,000	508,000	525,000	6.69	7.91	8.09
Table	85,000	85,000	95,000	12.10	12.00	12.90
Raisin	205,000	200,000	200,000	11.00	9.05	11.20
Georgia	1,500	1,800	1,600	2.33	2.61	2.88
Michigan	14,500	14,700	14,700	6.51	2.60	6.39
Missouri	1,700	1,700	1,700	3.06	2.71	3.55
New York	37,000	37,000	37,000	5.08	3.11	5.62
North Carolina	1,800	1,800	2,300	2.89	2.75	2.26
Ohio	1,900	1,900	1,900	3.94	2.81	3.42
Oregon	17,500	18,000	18,500	2.37	2.56	2.65
Pennsylvania	13,600	13,600	13,000	6.69	4.49	8.54
Texas	4,400	3,400	3,500	1.21	2.18	1.66
Virginia	2,600	2,600	3,200	2.65	2.65	2.06
Washington	67,000	67,000	69,000	4.72	5.67	5.65
Wine	41,000	43,000	45,000	3.46	4.37	4.67
Juice	26,000	24,000	24,000	6.69	8.00	7.50
United States	960,100	957,100	987,120	7.76	7.86	8.72
State and type	Total production			Utilized production		
	2011	2012	2013	2011	2012	2013
	(tons)	(tons)	(tons)	(tons)	(tons)	(tons)
Arkansas	1,200	1,300	1,800	1,100	1,100	1,640
California	6,682,000	6,852,000	7,717,000	6,682,000	6,852,000	7,717,000
Wine	3,387,000	4,018,000	4,245,000	3,387,000	4,018,000	4,245,000
Table ²	1,032,000	1,024,000	1,226,000	1,032,000	1,024,000	1,226,000
Raisin ²	2,263,000	1,810,000	2,246,000	2,263,000	1,810,000	2,246,000
Georgia	3,500	4,700	4,600	3,300	4,000	3,300
Michigan	94,400	38,200	94,000	93,400	38,200	94,000
Missouri	5,200	4,600	6,040	5,200	4,600	5,970
New York	188,000	115,000	208,000	188,000	112,000	202,000
North Carolina	5,200	4,950	5,200	4,980	4,800	4,700
Ohio	7,480	5,335	6,490	7,330	5,293	6,160
Oregon	41,500	46,000	49,000	41,500	46,000	49,000
Pennsylvania	91,000	61,000	111,000	87,000	59,000	106,000
Texas	5,330	7,420	5,800	4,610	7,300	5,590
Virginia	6,900	6,900	6,600	6,020	6,700	6,100
Washington	316,000	380,000	390,000	316,000	380,000	390,000
Wine	142,000	188,000	210,000	142,000	188,000	210,000
Juice	174,000	192,000	180,000	174,000	192,000	180,000
United States	7,447,710	7,527,405	8,605,530	7,440,440	7,520,993	8,591,460

See footnote(s) at end of table.

--continued

Grape Bearing Acreage, Yield, Production, Price, and Value – States and United States: 2011-2013 (continued)

State and type	Price per ton			Value of utilized production		
	2011 (dollars)	2012 (dollars)	2013 (dollars)	2011 (1,000 dollars)	2012 (1,000 dollars)	2013 (1,000 dollars)
Arkansas	982.00	1,160.00	1,010.00	1,080	1,281	1,663
California	578.00	756.00	724.00	3,859,202	5,182,968	5,585,584
Wine	638.00	773.00	753.00	2,160,519	3,105,914	3,196,485
Table ²	809.00	1,220.00	1,260.00	834,967	1,250,728	1,540,879
Raisin ²	382.00	457.00	378.00	863,716	826,326	848,220
Georgia	1,280.00	1,410.00	1,150.00	4,230	5,624	3,782
Michigan	364.00	464.00	389.00	33,957	17,738	36,552
Missouri	831.00	725.00	728.00	4,323	3,334	4,345
New York	373.00	467.00	386.00	70,056	52,252	78,051
North Carolina	1,030.00	931.00	843.00	5,105	4,469	3,961
Ohio	398.00	686.00	599.00	2,916	3,631	3,691
Oregon	1,950.00	2,050.00	2,190.00	80,925	94,300	107,310
Pennsylvania	305.00	348.00	330.00	26,507	20,555	34,983
Texas	1,520.00	1,450.00	1,560.00	6,987	10,564	8,711
Virginia	1,540.00	1,630.00	1,680.00	9,271	10,921	10,248
Washington	587.00	657.00	714.00	185,568	249,472	278,640
Wine	987.00	1,040.00	1,110.00	140,154	195,520	233,100
Juice	261.00	281.00	253.00	45,414	53,952	45,540
United States	577.00	752.00	717.00	4,290,127	5,657,109	6,157,521

¹ Yield is based on total production.

² Fresh equivalent of dried and not dried.

Unutilized Grape Production – States and United States: 2011-2013

State	Unharvested production			Harvested not sold		
	2011 (tons)	2012 (tons)	2013 (tons)	2011 (tons)	2012 (tons)	2013 (tons)
Arkansas	90	190	150	10	10	10
Georgia	200	700	1,300	-	-	-
Michigan	1,000	-	-	-	-	-
Missouri	-	-	-	-	-	70
New York	-	3,000	4,000	-	-	2,000
North Carolina	170	150	500	50	-	-
Ohio	150	42	330	-	-	-
Pennsylvania	4,000	2,000	4,000	-	-	1,000
Texas	640	100	200	80	20	10
Virginia	880	200	500	-	-	-
United States	7,130	6,382	10,980	140	30	3,090

- Represents zero.

Grape Fresh and Processed Utilization, Price, and Value – States and United States: 2011-2013

Utilization, State, and type	Quantity			Price per ton		
	2011 (tons)	2012 (tons)	2013 (tons)	2011 (dollars)	2012 (dollars)	2013 (dollars)
Fresh						
California	975,000	957,000	1,111,000	974.00	1,370.00	1,430.00
Wine	40,000	(NA)	(NA)	712.00	(NA)	(NA)
Table	831,000	881,000	1,046,000	947.00	1,370.00	1,430.00
Raisin	104,000	76,000	65,000	1,290.00	1,330.00	1,390.00
Michigan	1,100	450	1,100	2,400.00	2,450.00	2,450.00
Missouri	60	50	70	950.00	1,150.00	1,220.00
New York	5,000	3,000	3,000	1,800.00	1,690.00	1,900.00
North Carolina	380	380	330	2,540.00	2,455.00	2,733.00
Ohio	80	53	60	738.00	1,773.00	1,730.00
Pennsylvania	400	300	800	1,500.00	1,500.00	1,400.00
Texas	810	100	100	1,870.00	1,240.00	1,470.00
Other States ¹	1,850	2,050	1,640	1,940.00	2,040.00	1,560.00
United States	984,680	963,383	1,118,100	983.00	1,370.00	1,430.00
Processed						
California	5,707,000	5,895,000	6,606,000	510.00	657.00	605.00
Wine	3,347,000	4,018,000	4,245,000	637.00	773.00	753.00
Table	201,000	143,000	180,000	239.00	306.00	251.00
Raisin	2,159,000	1,734,000	2,181,000	338.00	418.00	347.00
Michigan	92,300	37,750	92,900	339.00	441.00	364.00
Missouri	5,140	4,550	5,900	830.00	720.00	722.00
New York	183,000	109,000	199,000	334.00	433.00	364.00
North Carolina	4,600	4,420	4,370	900.00	800.00	700.00
Ohio	7,250	5,240	6,100	394.00	675.00	588.00
Oregon ²	41,500	46,000	49,000	1,950.00	2,050.00	2,190.00
Pennsylvania	86,600	58,700	105,200	299.00	343.00	322.00
Texas	3,800	7,200	5,490	1,440.00	1,450.00	1,560.00
Virginia	6,020	6,700	6,100	1,540.00	1,630.00	1,680.00
Washington	316,000	380,000	390,000	587.00	657.00	714.00
Wine	142,000	188,000	210,000	987.00	1,040.00	1,110.00
Juice	174,000	192,000	180,000	261.00	281.00	253.00
Other States ¹	2,550	3,050	3,300	675.00	895.00	874.00
United States	6,455,760	6,557,610	7,473,360	515.00	661.00	610.00

See footnote(s) at end of table.

--continued

**Grape Fresh and Processed Utilization, Price, and Value – States and United States:
2011-2013 (continued)**

Utilization, State, and type	Value of utilized production		
	2011 (1,000 dollars)	2012 (1,000 dollars)	2013 (1,000 dollars)
Fresh			
California	949,597	1,308,050	1,586,130
Wine	28,480	(NA)	(NA)
Table	786,957	1,206,970	1,495,780
Raisin	134,160	101,080	90,350
Michigan	2,640	1,103	2,695
Missouri	57	58	85
New York	9,000	5,070	5,700
North Carolina	965	933	902
Ohio	59	94	104
Pennsylvania	600	450	1,120
Texas	1,515	124	147
Other States ¹	3,590	4,175	2,562
United States	968,023	1,320,057	1,599,445
Processed			
California	2,909,605	3,874,918	3,999,454
Wine	2,132,039	3,105,914	3,196,485
Table	48,010	43,758	45,099
Raisin	729,556	725,246	757,870
Michigan	31,317	16,635	33,857
Missouri	4,266	3,276	4,260
New York	61,056	47,182	72,351
North Carolina	4,140	3,536	3,059
Ohio	2,857	3,537	3,587
Oregon ²	80,925	94,300	107,310
Pennsylvania	25,907	20,105	33,863
Texas	5,472	10,440	8,564
Virginia	9,271	10,921	10,248
Washington	185,568	249,472	278,640
Wine	140,154	195,520	233,100
Juice	45,414	53,952	45,540
Other States ¹	1,720	2,730	2,883
United States	3,322,104	4,337,052	4,558,076

(NA) Not available.

¹ Includes data withheld above and/or data for States not listed in this table.

² Includes small quantities sold fresh.

Grape Processed Utilization and Price by Use – States and United States: 2011-2013

Utilization, State, and type	Quantity			Price per ton		
	2011 (tons)	2012 (tons)	2013 (tons)	2011 (dollars)	2012 (dollars)	2013 (dollars)
Canned						
California						
Raisin	25,000	20,000	22,000	355.00	400.00	435.00
Juice ^{1 2}						
Michigan	85,500	30,800	85,300	278.00	284.00	290.00
New York	130,000	69,000	149,000	265.00	318.00	299.00
Ohio	5,800	2,190	3,160	280.00	314.00	295.00
Pennsylvania	74,800	52,500	84,000	270.00	305.00	283.00
Washington	174,000	192,000	180,000	261.00	281.00	253.00
United States ³	470,100	346,490	501,560	267.00	292.00	278.00
Wine						
California	3,875,000	4,387,000	4,700,000	584.00	734.00	704.00
Wine	3,347,000	4,018,000	4,245,000	637.00	773.00	753.00
Table	155,000	99,000	127,000	219.00	272.00	222.00
Raisin	373,000	270,000	328,000	265.00	319.00	255.00
Michigan	6,800	6,950	7,600	1,110.00	1,135.00	1,200.00
Missouri	5,140	4,550	5,900	830.00	720.00	722.00
New York	53,000	40,000	50,000	502.00	631.00	556.00
North Carolina	4,600	4,420	4,370	900.00	800.00	700.00
Ohio	1,450	3,050	2,940	850.00	934.00	903.00
Oregon ²	41,500	46,000	49,000	1,950.00	2,050.00	2,190.00
Pennsylvania	11,800	6,200	21,200	484.00	660.00	476.00
Texas	3,800	7,200	5,490	1,440.00	1,450.00	1,560.00
Virginia	6,020	6,700	6,100	1,540.00	1,630.00	1,680.00
Washington	142,000	188,000	210,000	987.00	1,040.00	1,110.00
Other States ^{3 4}	2,550	3,050	3,200	675.00	895.00	870.00
United States	4,153,660	4,703,120	5,065,800	614.00	761.00	736.00
Dried (fresh basis)						
California	1,807,000	1,488,000	1,884,000	352.00	435.00	362.00
Table	46,000	44,000	53,000	306.00	383.00	319.00
Raisin	1,761,000	1,444,000	1,831,000	353.00	437.00	363.00

¹ Includes small quantities of other processed utilizations (jam, jelly, etc.).

² Includes small quantities for other uses.

³ Includes data withheld above and/or data for States not listed in this table.

⁴ Grapes processed for juice are included in Other States wine to avoid disclosure of individual operations.

Grape Processed Utilization by Variety – States and United States: 2011-2013

Variety and State	2011	2012	2013
	(tons)	(tons)	(tons)
Concord			
Michigan	55,100	21,000	52,000
New York	124,700	64,600	148,000
Ohio	6,210	4,430	4,530
Pennsylvania	74,500	45,500	82,600
Washington	156,000	174,000	165,000
Other States ¹	490	580	420
United States	417,000	310,110	452,550
Niagara			
Michigan	31,000	10,800	32,900
New York	20,300	11,400	20,000
Ohio	630	450	450
Pennsylvania	6,800	9,500	9,300
Washington	18,000	18,000	15,000
United States	76,730	50,150	77,650

¹ Includes data withheld above and/or data for States not listed in this table.

Concord Grapes for Processing Marketing Year Average Prices – New York and Pennsylvania: 2011-2013

State	2011	2012	2013
	(dollars per ton)	(dollars per ton)	(dollars per ton)
New York	262.00	316.00	298.00
Pennsylvania	268.00	301.00	282.00

Peach Bearing Acreage, Yield, Production, Price, and Value – States and United States: 2011-2013

State	Bearing acreage			Yield per acre ¹		
	2011 (acres)	2012 (acres)	2013 (acres)	2011 (tons)	2012 (tons)	2013 (tons)
Alabama	2,200	2,400	1,500	2.59	2.29	2.76
Arkansas	1,200	1,200	650	1.50	2.50	2.00
California	47,500	47,000	46,000	16.30	15.20	14.10
Freestone	25,000	24,000	24,000	15.20	14.30	11.70
Clingstone	22,500	23,000	22,000	17.50	16.00	16.70
Colorado	2,400	2,500	2,500	5.00	6.80	2.93
Connecticut	400	400	400	3.00	3.38	3.38
Georgia	10,200	9,900	11,400	3.53	3.36	3.09
Idaho	1,300	1,300	1,100	5.85	5.85	5.55
Illinois	1,600	1,600	840	5.80	4.61	3.13
Maryland	800	800	850	4.86	5.43	4.55
Massachusetts	430	430	340	4.07	3.60	4.12
Michigan	3,700	3,600	3,300	4.50	0.55	6.24
Missouri	1,500	1,500	1,000	3.40	2.40	3.17
New Jersey	5,500	5,300	4,500	5.82	5.66	4.03
New York	1,600	1,600	1,600	4.25	1.63	4.84
North Carolina	1,100	1,100	1,100	4.82	4.82	5.45
Ohio	1,200	1,000	1,000	5.03	3.54	5.37
Pennsylvania	4,400	4,400	4,000	4.02	4.73	4.88
South Carolina	15,500	17,000	14,000	6.13	4.41	4.98
Texas	4,300	4,000	3,300	1.23	2.75	2.50
Utah	1,500	1,500	1,300	2.87	3.53	4.17
Virginia	1,000	1,000	1,200	6.50	6.50	6.45
Washington	2,200	2,200	2,400	6.00	5.91	5.46
West Virginia	950	750	950	6.00	5.60	6.00
United States	112,480	112,480	105,230	9.53	8.68	8.57
State	Total production			Utilized production		
	2011 (tons)	2012 (tons)	2013 (tons)	2011 (tons)	2012 (tons)	2013 (tons)
Alabama	5,700	5,500	4,140	5,300	4,000	3,840
Arkansas	1,800	3,000	1,300	1,760	2,790	1,130
California	773,000	713,000	648,000	773,000	713,000	648,000
Freestone	380,000	344,000	280,000	380,000	344,000	280,000
Clingstone	393,000	369,000	368,000	393,000	369,000	368,000
Colorado	12,000	17,000	7,330	11,200	16,000	7,080
Connecticut	1,200	1,350	1,350	1,100	1,300	1,330
Georgia	36,000	33,300	35,250	33,600	31,100	34,810
Idaho	7,600	7,600	6,100	6,700	6,800	5,500
Illinois	9,280	7,380	2,627	7,890	6,970	2,360
Maryland	3,890	4,340	3,870	3,880	4,260	3,590
Massachusetts	1,750	1,550	1,400	1,750	1,500	1,300
Michigan	16,650	1,980	20,600	16,400	1,980	19,790
Missouri	5,100	3,600	3,170	5,100	3,600	3,170
New Jersey	32,000	30,000	18,120	30,000	30,000	18,000
New York	6,800	2,600	7,740	6,750	2,550	7,050
North Carolina	5,300	5,300	6,000	5,150	5,100	5,200
Ohio	6,030	3,540	5,370	5,840	3,310	4,960
Pennsylvania	17,690	20,800	19,500	17,290	20,350	18,300
South Carolina	95,000	75,000	69,650	77,600	70,250	64,150
Texas	5,300	11,000	8,250	4,650	10,200	7,500
Utah	4,300	5,300	5,421	4,100	5,200	5,141
Virginia	6,500	6,500	7,740	5,220	6,430	6,040
Washington	13,200	13,000	13,100	13,200	13,000	12,900
West Virginia	5,700	4,200	5,700	5,500	4,100	5,460
United States	1,071,790	976,840	901,728	1,042,980	963,790	886,601

See footnote(s) at end of table.

--continued

**Peach Bearing Acreage, Yield, Production, Price, and Value – States and United States:
2011-2013 (continued)**

State	Price per ton			Value of utilized production		
	2011 (dollars)	2012 (dollars)	2013 (dollars)	2011 (1,000 dollars)	2012 (1,000 dollars)	2013 (1,000 dollars)
Alabama	1,050.00	1,240.00	1,170.00	5,565	4,960	4,493
Arkansas	1,550.00	1,650.00	1,610.00	2,728	4,604	1,819
California	374.00	464.00	429.00	289,197	330,694	278,283
Freestone	447.00	588.00	516.00	170,019	202,297	144,418
Clingstone	303.00	348.00	364.00	119,178	128,397	133,865
Colorado	2,000.00	1,580.00	1,870.00	22,400	25,280	13,263
Connecticut	2,100.00	2,300.00	2,770.00	2,310	2,990	3,684
Georgia	930.00	961.00	826.00	31,260	29,892	28,768
Idaho	1,160.00	1,340.00	945.00	7,800	9,098	5,196
Illinois	1,260.00	1,390.00	1,130.00	9,918	9,672	2,667
Maryland	1,220.00	1,190.00	1,060.00	4,735	5,078	3,804
Massachusetts	3,140.00	3,200.00	2,770.00	5,495	4,800	3,601
Michigan	731.00	1,330.00	706.00	11,995	2,624	13,972
Missouri	1,200.00	1,200.00	1,850.00	6,120	4,320	5,865
New Jersey	1,220.00	1,320.00	1,510.00	36,600	39,600	27,180
New York	1,240.00	1,580.00	815.00	8,352	4,022	5,748
North Carolina	1,000.00	1,220.00	1,150.00	5,150	6,222	5,980
Ohio	1,640.00	1,710.00	1,480.00	9,578	5,646	7,364
Pennsylvania	1,360.00	1,060.00	1,030.00	23,462	21,653	18,926
South Carolina	970.00	1,050.00	1,070.00	75,247	74,023	68,375
Texas	2,000.00	1,850.00	2,570.00	9,300	18,870	19,275
Utah	1,010.00	1,080.00	1,080.00	4,144	5,633	5,542
Virginia	858.00	933.00	926.00	4,479	5,999	5,596
Washington	592.00	627.00	770.00	7,809	8,153	9,937
West Virginia	852.00	1,300.00	900.00	4,686	5,330	4,914
United States	564.00	653.00	614.00	588,330	629,163	544,252

¹ Yield is based on total production.

Peach Utilized Production, Price, and Value by Utilization – States and United States: 2011-2013

Use and State	Quantity			Price per unit		
	2011 (tons)	2012 (tons)	2013 (tons)	2011 (dollars per ton)	2012 (dollars per ton)	2013 (dollars per ton)
Fresh						
California, Freestone	282,000	250,000	174,000	525.00	726.00	670.00
Connecticut	1,100	1,300	1,330	2,100.00	2,300.00	2,770.00
Massachusetts	(D)	1,500	1,300	(D)	3,200.00	2,770.00
Missouri	5,100	3,600	3,170	1,200.00	1,200.00	1,850.00
Ohio	5,840	(D)	(D)	1,640.00	(D)	(D)
South Carolina	74,900	69,700	63,200	980.00	1,060.00	1,070.00
Texas	4,650	10,200	7,500	2,000.00	1,850.00	2,570.00
Virginia	5,220	6,430	(D)	858.00	933.00	(D)
West Virginia	5,500	4,100	5,460	852.00	1,300.00	900.00
Other States ¹	147,380	141,820	138,930	1,230.00	1,260.00	1,110.00
United States	531,690	488,650	394,890	826.00	974.00	952.00
Processed						
California						
Clingstone	393,000	369,000	368,000	303.00	348.00	364.00
Freestone ²	98,000	94,000	106,000	233.00	242.00	272.00
South Carolina	2,700	550	950	683.00	256.00	791.00
Other States ¹	17,590	11,590	16,761	346.00	342.00	359.00
United States ³	511,290	475,140	491,711	292.00	323.00	343.00

See footnote(s) at end of table.

--continued

**Peach Utilized Production, Price, and Value by Utilization – States and United States:
2011-2013 (continued)**

Use and State	Value of utilized production		
	2011 (1,000 dollars)	2012 (1,000 dollars)	2013 (1,000 dollars)
Fresh			
California, Freestone	148,050	181,500	116,580
Connecticut	2,310	2,990	3,684
Massachusetts	(D)	4,800	3,601
Missouri	6,120	4,320	5,865
Ohio	9,578	(D)	(D)
South Carolina	73,402	73,882	67,624
Texas	9,300	18,870	19,275
Virginia	4,479	5,999	(D)
West Virginia	4,686	5,330	4,914
Other States ¹	181,332	178,175	154,237
United States	439,257	475,866	375,780
Processed			
California			
Clingstone	119,178	128,397	133,865
Freestone ²	21,969	20,797	27,838
South Carolina	1,845	141	751
Other States ¹	6,081	3,962	6,018
United States ³	149,073	153,297	168,472

(D) Withheld to avoid disclosing data for individual operations.

¹ Includes data withheld above and/or data for States not listed in this table.

² California Freestone quantity and value include dried, price excludes dried.

³ United States quantity, price, and value include dried.

Peach Processed Utilization and Price by Use – States and United States: 2011-2013

Use and State	Quantity			Price per ton		
	2011	2012	2013	2011	2012	2013
	(tons)	(tons)	(tons)	(dollars)	(dollars)	(dollars)
Canned						
California						
Clingstone	377,000	352,000	353,000	307.00	347.00	365.00
Other States ¹	10,190	12,640	16,751	401.00	275.00	323.00
United States	387,190	364,640	369,751	310.00	345.00	363.00
Frozen						
California						
Freestone	84,600	75,200	88,100	240.00	245.00	283.00
Other States ¹	16,000	15,010	15,640	402.00	408.00	387.00
United States	100,600	90,210	103,740	266.00	272.00	299.00
Dried						
California						
Freestone	4,600	9,800	4,200	42.00	41.00	42.00
United States	4,600	9,800	4,200	42.00	41.00	42.00
Other ²						
United States	18,900	10,490	14,020	124.00	264.00	220.00

¹ Includes data withheld above and/or data for States not listed in this table.

² Pickled, wine, brandy, juice, and baby food.

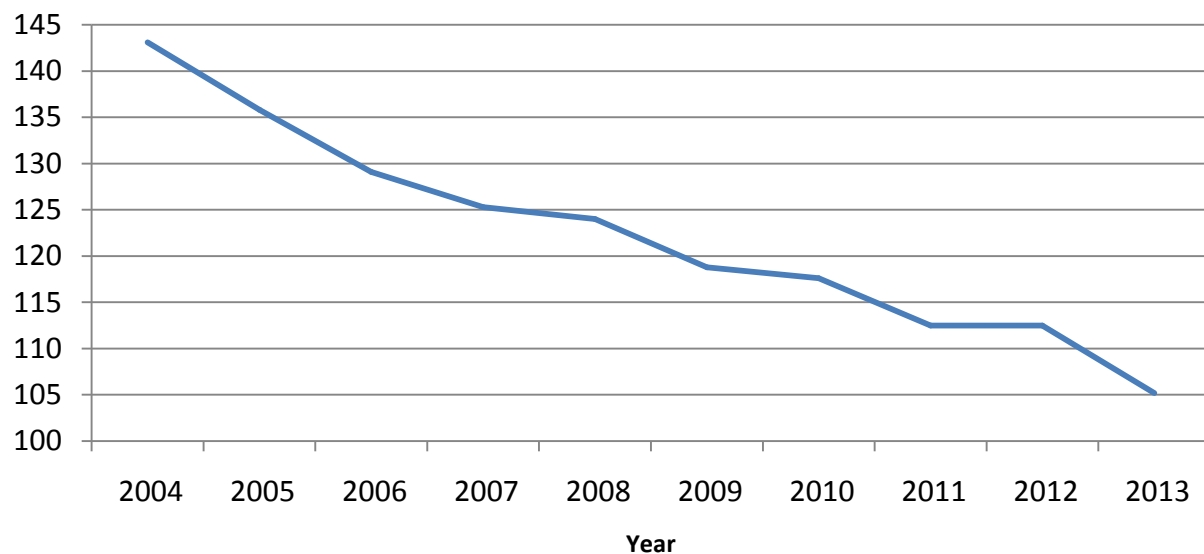
Unutilized Peach Production – States and United States: 2011-2013

State	Unharvested production			Harvested not sold		
	2011	2012	2013	2011	2012	2013
	(tons)	(tons)	(tons)	(tons)	(tons)	(tons)
Alabama	300	1,450	200	100	50	100
Arkansas	20	130	140	20	80	30
Colorado	-	1,000	20	800	-	230
Connecticut	100	50	10	-	-	10
Georgia	300	200	100	2,100	2,000	340
Idaho	-	-	-	900	800	600
Illinois	330	190	160	1,060	220	107
Maryland	-	30	80	10	50	200
Massachusetts	-	50	70	-	-	30
Michigan	250	-	520	-	-	290
New Jersey	2,000	-	120	-	-	-
New York	-	-	140	50	50	550
North Carolina	50	150	510	100	50	290
Ohio	130	180	130	60	50	280
Pennsylvania	400	210	700	-	240	500
South Carolina	4,400	3,700	2,500	13,000	1,050	3,000
Texas	370	360	400	280	440	350
Utah	160	60	260	40	40	20
Virginia	500	70	740	780	-	960
Washington	-	-	150	-	-	50
West Virginia	150	10	100	50	90	140
United States	9,460	7,840	7,050	19,350	5,210	8,077

- Represents zero.

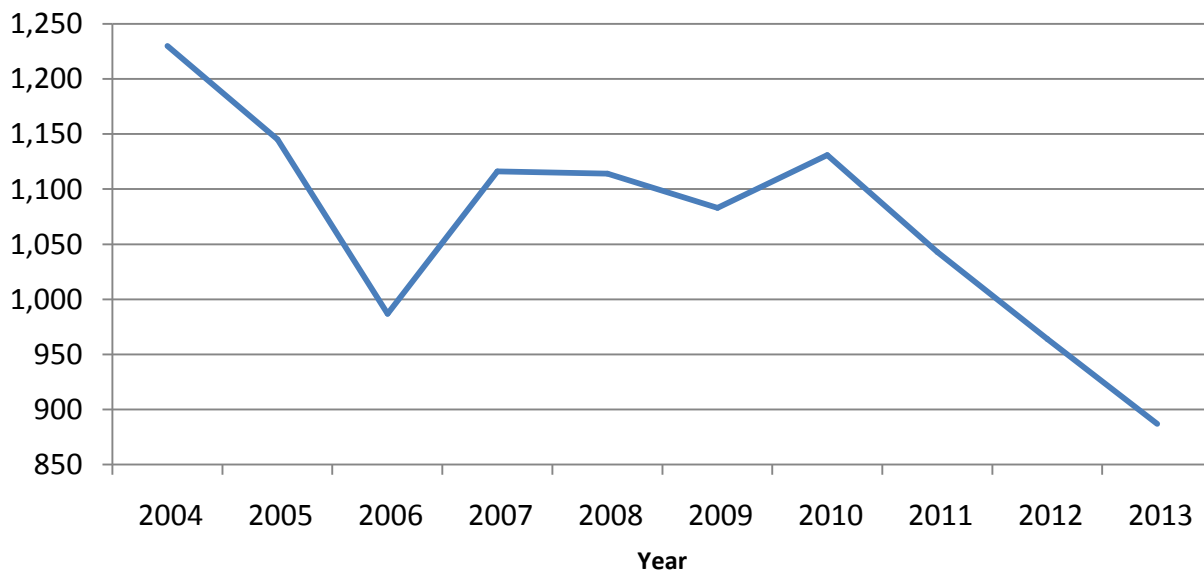
Peach Bearing Acreage United States: 2004-2013

(000) Acres



Peach Utilized Production United States: 2004-2013

(000) Tons



All Pear Bearing Acreage, Yield, Production, Utilization, Price, and Value – States and United States: 2011-2013

State and year	Bearing acreage	Yield per acre ¹	Production		Utilization	
			Total	Utilized	Fresh	Processed
	(acres)	(tons)	(tons)	(tons)	(tons)	(tons)
California						
2011	14,000	18.00	252,000	252,000	(D)	(D)
2012	11,500	18.10	208,000	208,000	(D)	(D)
2013	11,600	19.00	220,000	220,000	(D)	(D)
Michigan						
2011	700	6.29	4,400	4,400	(D)	(D)
2012	700	0.06	40	40	(D)	(D)
2013	700	7.64	5,350	5,180	(D)	(D)
New York						
2011	1,200	10.10	12,100	11,600	(D)	(D)
2012	1,200	2.58	3,100	3,100	(D)	(D)
2013	1,000	9.20	9,200	9,100	(D)	(D)
Oregon						
2011	16,200	14.00	227,000	227,000	(D)	(D)
2012	16,200	15.30	248,000	248,000	(D)	(D)
2013	14,600	14.20	207,000	207,000	(D)	(D)
Pennsylvania						
2011	800	2.78	2,220	2,110	(D)	(D)
2012	800	1.38	1,100	990	(D)	(D)
2013	800	1.98	1,580	1,240	(D)	(D)
Washington						
2011	21,500	21.80	468,000	468,000	(D)	(D)
2012	21,500	18.20	391,000	391,000	(D)	(D)
2013	20,900	20.80	434,000	434,000	(D)	(D)
United States ²						
2011	54,400	17.80	965,720	965,110	643,710	321,400
2012	51,900	16.40	851,240	851,130	551,820	299,310
2013	49,600	17.70	877,130	876,520	584,730	291,790

See footnote(s) at end of table.

--continued

All Pear Bearing Acreage, Yield, Production, Utilization, Price, and Value – States and United States: 2011-2013 (continued)

State and year	Price per ton			Value of production		
	Fresh	Processed excludes dried	All	Fresh	Processed includes dried	All
	(dollars)	(dollars)	(dollars)	(1,000 dollars)	(1,000 dollars)	(1,000 dollars)
California						
2011	(D)	(D)	388.00	(D)	(D)	97,805
2012	(D)	(D)	432.00	(D)	(D)	89,852
2013	(D)	(D)	399.00	(D)	(D)	87,709
Michigan						
2011	(D)	(D)	275.00	(D)	(D)	1,209
2012	(D)	(D)	625.00	(D)	(D)	25
2013	(D)	(D)	348.00	(D)	(D)	1,805
New York						
2011	(D)	(D)	600.00	(D)	(D)	6,956
2012	(D)	(D)	758.00	(D)	(D)	2,350
2013	(D)	(D)	565.00	(D)	(D)	5,144
Oregon						
2011	(D)	(D)	341.00	(D)	(D)	77,406
2012	(D)	(D)	541.00	(D)	(D)	134,241
2013	(D)	(D)	537.00	(D)	(D)	111,117
Pennsylvania						
2011	(D)	(D)	995.00	(D)	(D)	2,100
2012	(D)	(D)	794.00	(D)	(D)	786
2013	(D)	(D)	923.00	(D)	(D)	1,144
Washington						
2011	(D)	(D)	387.00	(D)	(D)	181,076
2012	(D)	(D)	526.00	(D)	(D)	205,734
2013	(D)	(D)	519.00	(D)	(D)	225,392
United States ²						
2011	451.00	237.00	380.00	290,233	76,319	366,552
2012	656.00	238.00	509.00	361,916	71,072	432,988
2013	599.00	282.00	493.00	349,998	82,313	432,311

(D) Withheld to avoid disclosing data for individual operations.

¹ Yield is based on total production.

² Processed mostly canned, but includes small quantities dried and other uses not published separately to avoid disclosure of individual operations.

Unutilized Pear Production – States and United States: 2011-2013

State	Unharvested production			Harvested not sold		
	2011	2012	2013	2011	2012	2013
	(tons)	(tons)	(tons)	(tons)	(tons)	(tons)
Michigan	-	-	(D)	-	-	(D)
New York	500	-	(D)	-	-	(D)
Pennsylvania	10	20	120	100	90	220
United States	510	20	310	100	90	300

- Represents zero.

(D) Withheld to avoid disclosing data for individual operations.

Pear Bearing Acreage, Yield, Production, Utilization, Price, and Value by Type – States and United States: 2011-2013

Type, State and year	Bearing acreage	Yield per acre ¹	Production		Utilization	
			Total	Utilized	Fresh	Processed
	(acres)	(tons)	(tons)	(tons)	(tons)	(tons)
Bartlett ²						
California						
2011	10,000	19.50	195,000	195,000	64,000	131,000
2012	8,700	18.70	163,000	163,000	53,000	110,000
2013	8,800	20.10	177,000	177,000	57,000	120,000
Oregon						
2011	4,200	11.20	47,000	47,000	29,000	18,000
2012	4,200	14.50	61,000	61,000	30,000	31,000
2013	3,800	14.50	55,000	55,000	37,000	18,000
Washington						
2011	9,500	19.80	188,000	188,000	68,000	120,000
2012	9,500	19.10	181,000	181,000	76,000	105,000
2013	8,900	20.80	185,000	185,000	78,000	107,000
United States						
2011	23,700	18.10	430,000	430,000	161,000	269,000
2012	22,400	18.10	405,000	405,000	159,000	246,000
2013	21,500	19.40	417,000	417,000	172,000	245,000
Other ³						
California						
2011	4,000	14.30	57,000	57,000	(D)	(D)
2012	2,800	16.10	45,000	45,000	(D)	(D)
2013	2,800	15.40	43,000	43,000	(D)	(D)
Oregon						
2011	12,000	15.00	180,000	180,000	(D)	(D)
2012	12,000	15.60	187,000	187,000	(D)	(D)
2013	10,800	14.10	152,000	152,000	(D)	(D)
Washington						
2011	12,000	23.30	280,000	280,000	(D)	(D)
2012	12,000	17.50	210,000	210,000	(D)	(D)
2013	12,000	20.80	249,000	249,000	(D)	(D)
United States						
2011	28,000	18.50	517,000	517,000	469,000	48,000
2012	26,800	16.50	442,000	442,000	389,000	53,000
2013	25,600	17.30	444,000	444,000	405,000	39,000

See footnote(s) at end of table.

--continued

Pear Bearing Acreage, Yield, Production, Utilization, Price, and Value by Type – States and United States: 2011-2013 (continued)

Type, State and year	Price per ton			Value of production		
	Fresh	Processed excludes dried	All	Fresh	Processed includes dried	All
	(dollars)	(dollars)	(dollars)	(1,000 dollars)	(1,000 dollars)	(1,000 dollars)
Bartlett ²						
California						
2011	340.00	298.00	311.00	21,760	38,949	60,709
2012	470.00	322.00	370.00	24,910	35,332	60,242
2013	384.00	345.00	357.00	21,888	41,279	63,167
Oregon						
2011	495.00	248.00	400.00	14,355	4,461	18,816
2012	671.00	245.00	455.00	20,130	7,606	27,736
2013	623.00	280.00	511.00	23,051	5,038	28,089
Washington						
2011	544.00	242.00	351.00	36,992	29,082	66,074
2012	656.00	235.00	412.00	49,856	24,668	74,524
2013	644.00	282.00	435.00	50,232	30,215	80,447
United States						
2011	454.00	270.00	339.00	73,107	72,492	145,599
2012	597.00	275.00	401.00	94,896	67,606	162,502
2013	553.00	313.00	412.00	95,171	76,532	171,703
Other ³						
California						
2011	(D)	(D)	651.00	(D)	(D)	37,096
2012	(D)	(D)	658.00	(D)	(D)	29,610
2013	(D)	(D)	571.00	(D)	(D)	24,542
Oregon						
2011	(D)	(D)	326.00	(D)	(D)	58,590
2012	(D)	(D)	570.00	(D)	(D)	106,505
2013	(D)	(D)	546.00	(D)	(D)	83,028
Washington						
2011	(D)	(D)	411.00	(D)	(D)	115,002
2012	(D)	(D)	625.00	(D)	(D)	131,210
2013	(D)	(D)	582.00	(D)	(D)	144,945
United States						
2011	444.00	52.60	408.00	208,165	2,523	210,688
2012	679.00	63.60	605.00	263,955	3,370	267,325
2013	616.00	74.00	569.00	249,629	2,886	252,515

(D) Withheld to avoid disclosing data for individual operations.

¹ Yield is based on total production.

² Processed mostly canned, but includes small quantities dried and other uses not published separately to avoid disclosure of individual operations.

³ Processed mostly juice, but includes small quantities canned and other uses not published separately to avoid disclosure of individual operations.

Tropical Fruit Acreage Harvested, Yield, Utilized Production, Utilization, Price, and Value by Crop – Hawaii: 2011-2013

Crop and year	Acreage harvested (acres)	Yield per acre (1,000 pounds)	Utilized production (1,000 pounds)	Utilization		
				Fresh (1,000 pounds)	Processed (1,000 pounds)	
Bananas						
2011	1,000	17.4	17,400	17,400	(NA)	
2012	(NA)	(NA)	(NA)	(NA)	(NA)	
2013	900	16.1	14,500	14,500	(NA)	
Guavas						
2011	110	17.3	1,900	(NA)	1,900	
2012	(NA)	(NA)	(NA)	(NA)	(NA)	
2013	100	21.0	2,100	(NA)	2,100	
Papayas						
2011	1,300	22.0	28,600	27,700	900	
2012	(NA)	(NA)	(NA)	(NA)	(NA)	
2013	1,300	18.6	24,200	23,000	1,200	
Crop and year	Price			Value of production		
	Fresh (dollars per pound)	Processed (dollars per pound)	All (dollars per pound)	Fresh (1,000 dollars)	Processed (1,000 dollars)	Total (1,000 dollars)
Bananas						
2011	0.650	(X)	0.650	11,310	(X)	11,310
2012	(NA)	(X)	(NA)	(NA)	(X)	(NA)
2013	0.900	(X)	0.900	13,050	(X)	13,050
Guavas						
2011	(X)	0.170	0.170	(X)	323	323
2012	(X)	(NA)	(NA)	(X)	(NA)	(NA)
2013	(X)	0.170	0.170	(X)	357	357
Papayas						
2011	0.350	0.030	0.340	9,695	27	9,722
2012	(NA)	(NA)	(NA)	(NA)	(NA)	(NA)
2013	0.360	0.030	0.344	8,280	36	8,316

(NA) Not available.
(X) Not applicable.

This page intentionally left blank.

Apples for Fresh Use Monthly Average Prices Received – States: July 2011 - June 2014

[Equivalent packinghouse door returns for California, Michigan, New York, and Washington; prices at point of first sale for other States]

State	2011						2012					
	Jul	Aug	Sep	Oct	Nov	Dec	Jan	Feb	Mar	Apr	May	Jun
California	(\$/lb)	(\$/lb)	(\$/lb)	(\$/lb)	(\$/lb)	(\$/lb)	(\$/lb)	(\$/lb)	(\$/lb)	(\$/lb)	(\$/lb)	(\$/lb)
California	(NA)	0.634	(S)	0.481	(S)	(NA)	(NA)	(NA)	(NA)	(NA)	(NA)	(NA)
Michigan	(NA)	(NA)	0.420	0.385	0.350	0.350	0.320	0.320	0.320	0.300	0.300	(NA)
New York	(NA)	(NA)	0.393	0.376	0.363	0.359	0.314	0.300	0.298	0.285	0.285	0.323
Ohio	0.640	0.510	0.490	0.490	0.430	0.420	0.450	0.400	0.470	0.520	0.520	0.670
Pennsylvania ...	(NA)	(NA)	(S)	(S)	0.306	0.285	(S)	0.288	0.402	(NA)	(NA)	(NA)
Virginia	(NA)	(NA)	0.430	0.400	0.400	0.330	0.320	0.350	0.350	(NA)	(NA)	(NA)
Washington	0.330	0.422	0.524	0.444	0.453	0.380	0.373	0.355	0.338	0.329	0.351	0.390
State	2012						2013					
	Jul	Aug	Sep	Oct	Nov	Dec	Jan	Feb	Mar	Apr	May	Jun
California	(\$/lb)	(\$/lb)	(\$/lb)	(\$/lb)	(\$/lb)	(\$/lb)	(\$/lb)	(\$/lb)	(\$/lb)	(\$/lb)	(\$/lb)	(\$/lb)
California	(NA)	0.529	0.408	0.314	(NA)	(NA)	(NA)	(NA)	(NA)	(NA)	(NA)	(NA)
Michigan	(NA)	(NA)	0.615	0.650	0.545	(NA)	(NA)	(NA)	(NA)	(NA)	(NA)	(NA)
New York	(NA)	(NA)	0.556	0.553	0.514	0.501	0.476	0.461	0.452	(NA)	(NA)	(NA)
Ohio	0.610	0.590	0.720	0.700	0.760	0.600	0.580	0.720	0.760	(NA)	(NA)	(NA)
Pennsylvania ...	(NA)	0.526	(S)	0.624	0.575	0.558	(S)	(S)	0.492	(NA)	(NA)	(NA)
Virginia	(NA)	(NA)	0.360	0.370	0.410	0.610	(S)	0.560	0.540	(NA)	(NA)	(NA)
Washington	0.419	0.490	0.638	0.535	0.529	0.455	0.439	0.417	0.396	(NA)	(NA)	(NA)
State	2013						2014					
	Jul	Aug	Sep	Oct	Nov	Dec	Jan	Feb	Mar	Apr	May	Jun
California	(\$/lb)	(\$/lb)	(\$/lb)	(\$/lb)	(\$/lb)	(\$/lb)	(\$/lb)	(\$/lb)	(\$/lb)	(\$/lb)	(\$/lb)	(\$/lb)
California	(NA)	(NA)	(NA)	(NA)	(NA)	(NA)	(NA)	(NA)	(NA)	(NA)	(NA)	(NA)
Michigan	(NA)	(NA)	(NA)	(NA)	(NA)	(NA)	(NA)	(NA)	(NA)	0.330	0.325	(NA)
New York	(NA)	(NA)	(NA)	(NA)	(NA)	(NA)	(NA)	(NA)	(NA)	0.240	0.260	0.260
Ohio	(NA)	(NA)	(NA)	(NA)	(NA)	(NA)	(NA)	(NA)	(NA)	(NA)	(NA)	(NA)
Pennsylvania ...	(NA)	(NA)	(NA)	(NA)	(NA)	(NA)	(NA)	(NA)	(NA)	(NA)	(NA)	(NA)
Virginia	(NA)	(NA)	(NA)	(NA)	(NA)	(NA)	(NA)	(NA)	(NA)	(NA)	(NA)	(NA)
Washington	(NA)	(NA)	(NA)	(NA)	(NA)	(NA)	(NA)	(NA)	(NA)	0.600	0.413	0.356

(NA) Not available.

(S) Insufficient number of reports to establish an estimate.

Apples for Fresh Use Monthly Average Prices Received – United States: July 2009 - June 2014

[Equivalent packinghouse door returns for California, Michigan, New York, and Washington]

Year	Jul	Aug	Sep	Oct	Nov	Dec	Jan ¹	Feb	Mar	Apr	May	Jun
	(\$/lb)	(\$/lb)	(\$/lb)	(\$/lb)	(\$/lb)	(\$/lb)	(\$/lb)	(\$/lb)	(\$/lb)	(\$/lb)	(\$/lb)	(\$/lb)
2009	0.172	0.237	0.337	0.274	0.256	0.227	0.218	0.243	0.220	0.209	0.229	0.208
2010	0.299	0.291	0.324	0.332	0.303	0.268	0.251	0.238	0.268	0.269	0.277	0.278
2011	0.358	0.634	0.421	0.431	0.344	0.302	0.320	0.306	0.332	0.300	0.300	0.384
2012	0.419	0.494	0.506	0.478	0.495	0.474	0.442	0.435	0.404	(NA)	(NA)	(NA)
2013	(NA)	(NA)	(NA)	(NA)	(NA)	(NA)	(NA)	(NA)	(NA)	0.316	0.384	0.352

(NA) Not available.

¹ January of the following year.

Grapes for Fresh Use Monthly Average Prices Received – United States: May 2009 - December 2013

[Equivalent packinghouse door returns]

Year	May	June	July	August	September	October	November	December
	(dollars per ton)	(dollars per ton)	(dollars per ton)	(dollars per ton)	(dollars per ton)	(dollars per ton)	(dollars per ton)	(dollars per ton)
2009	1,380	1,120	610	310	470	630	630	1,220
2010	(S)	650	460	430	420	430	500	750
2011	(S)	1,460	1,480	960	820	790	980	1,040
2012	2,640	1,550	1,030	980	1,130	1,540	1,770	1,780
2013	(NA)	(NA)	(NA)	(NA)	(NA)	(NA)	(NA)	(NA)

(NA) Not available.

(S) Insufficient number of reports to establish an estimate.

Peaches for Fresh Use Monthly Average Prices Received – United States: May 2009 - September 2013

[Equivalent packinghouse door returns for California and Washington; price at point of first sale for other States]

State	May	June	July	August	September
	(dollars per ton)	(dollars per ton)	(dollars per ton)	(dollars per ton)	(dollars per ton)
2009	846	794	644	676	655
2010	1,080	587	573	568	506
2011	1,290	661	662	711	564
2012	1,100	836	790	737	689
2013	(NA)	(NA)	(NA)	(NA)	(NA)

(NA) Not available.

Pears for Fresh Use Monthly Average Prices Received – United States: July 2009 - June 2014

[Equivalent packinghouse-door returns for California, New York, and Washington; price at point of first sale for other States]

Year	Jul	Aug	Sep	Oct	Nov	Dec	Jan ¹	Feb	Mar	Apr	May	Jun
	(\$/ton)	(\$/ton)	(\$/ton)	(\$/ton)	(\$/ton)	(\$/ton)	(\$/ton)	(\$/ton)	(\$/ton)	(\$/ton)	(\$/ton)	(\$/ton)
2009	537	424	383	481	449	398	381	368	350	426	533	640
2010	719	555	550	622	548	587	639	636	625	599	571	565
2011	561	576	483	511	494	453	428	386	301	286	353	594
2012	687	585	610	696	677	713	(NA)	(NA)	(NA)	(NA)	(NA)	(NA)
2013	(NA)	(NA)	(NA)	(NA)	(NA)	(NA)	(NA)	(NA)	(NA)	(NA)	686	893

(NA) Not available.

¹ January of the following year.

Tree Nut Bearing Acreage, Yield, Production, Price, and Value by Crop – States: 2011-2013

Crop, State, and year	Bearing acreage	Yield per acre ¹	Utilized production	Price per unit	Value of utilized production
	(acres)	(tons)	(tons)	(dollars per ton)	(1,000 dollars)
English walnuts, in-shell					
California					
2011	245,000	1.88	461,000	2,900	1,336,900
2012	270,000	1.84	497,000	3,030	1,505,910
2013	280,000	1.76	492,000	3,650	1,795,800
Hazelnuts, in-shell					
Oregon					
2011	28,500	1.35	38,500	2,330	89,705
2012	29,000	1.22	35,500	1,830	64,965
2013	30,000	1.50	45,000	2,680	120,600
	(acres)	(pounds)	(1,000 pounds)	(dollars per pound)	(1,000 dollars)
Almonds, shelled ^{2 3}					
California					
2011	800,000	2,540	2,030,000	1.990	4,007,860
2012	820,000	2,300	1,890,000	2.580	4,816,860
2013	840,000	2,390	2,010,000	2.900	5,768,100
Macadamia nuts, in-shell					
Hawaii					
2011	15,000	3,270	49,000	0.780	38,220
2012	15,000	2,930	44,000	0.800	35,200
2013	16,000	2,560	41,000	0.870	35,670
Pistachios, in-shell					
California					
2011	153,000	2,900	444,000	1.980	879,120
2012	182,000	3,030	551,000	2.610	1,438,110
2013	203,000	2,320	470,000	2.200	1,034,000

¹ Yield is based on utilized production.

² Price and value are based on the edible portion of the crop only. Production includes inedible quantities of no value as follows: 2011 - 16.0 million pounds; 2012 - 23.0 million pounds; 2013 - 21.0 million pounds.

³ Shelling ratios are: 2011 - .596; 2012 - .571; 2013 - .580.

Tree Nut Utilization and Meat Production by Crop – States and United States: 2011-2013

Crop, State, and year	Utilized production		Meat production of nuts sold shelled
	Sold in-shell	Sold shelled ¹	
	(tons)	(tons)	(tons)
English walnuts			
California			
2011	125,000	336,000	146,000
2012	153,000	344,000	153,000
2013	177,000	315,000	140,000
Hazelnuts			
Oregon			
2011	29,300	9,200	3,730
2012	28,000	7,500	3,000
2013	37,200	7,800	3,200
	(1,000 pounds)	(1,000 pounds)	(1,000 pounds)
Pecans			
United States			
2011	220,345	49,335	101,799
2012	(NA)	(NA)	(NA)
2013	48,285	217,045	106,569
Pistachios			
California			
2011	341,000	103,000	51,500
2012	464,000	87,000	43,935
2013	379,000	91,000	46,000

(NA) Not available.
¹ In-shell basis.

Pecan Production, Price, and Value by Variety – States and United States: 2011-2013

Variety and State	Utilized production (In-shell basis)			Price per pound			Value of utilized production		
	2011 (1,000 pounds)	2012 (1,000 pounds)	2013 (1,000 pounds)	2011 (dollars)	2012 (dollars)	2013 (dollars)	2011 (1,000 dollars)	2012 (1,000 dollars)	2013 (1,000 dollars)
Improved varieties ¹									
Alabama	13,000	3,400	2,500	1.830	1.400	1.940	23,790	4,760	4,850
Arizona	18,500	20,000	22,500	2.800	1.600	1.900	51,800	32,000	42,750
Arkansas	1,300	1,600	2,000	1.980	1.540	1.600	2,574	2,464	3,200
California	3,700	4,800	5,000	2.670	1.580	2.060	9,879	7,584	10,300
Florida	1,400	1,100	700	1.850	1.100	1.720	2,590	1,210	1,204
Georgia	92,000	96,000	83,000	2.650	1.940	1.960	243,800	186,240	162,680
Louisiana	2,500	5,000	1,500	2.200	1.300	1.400	5,500	6,500	2,100
Mississippi	3,400	2,000	3,800	1.800	1.250	1.230	6,120	2,500	4,674
Missouri	190	200	500	1.900	1.450	1.340	361	290	670
New Mexico	61,000	65,000	72,000	2.670	1.700	1.900	162,870	110,500	136,800
Oklahoma	2,000	5,000	3,000	2.400	1.550	2.050	4,800	7,750	6,150
South Carolina	2,040	1,500	1,500	2.000	1.750	2.000	4,080	2,625	3,000
Texas	26,000	42,000	22,000	2.650	1.520	1.790	68,900	63,840	39,380
United States	227,030	247,600	220,000	2.590	1.730	1.900	587,064	428,263	417,758
Native and seedling									
Alabama	6,000	600	770	1.310	0.830	1.020	7,860	498	785
Arkansas	1,200	600	700	1.580	0.850	0.830	1,896	510	581
Florida	2,600	900	(D)	1.400	0.750	(D)	3,640	675	(D)
Georgia	10,000	4,000	6,000	2.080	1.220	1.240	20,800	4,880	7,440
Kansas	1,500	3,000	(D)	1.800	1.350	(D)	2,700	4,050	(D)
Louisiana	7,500	10,000	9,500	1.400	0.700	0.860	10,500	7,000	8,170
Mississippi	1,600	500	1,700	1.400	0.850	0.950	2,240	425	1,615
Missouri	1,310	2,300	2,240	1.750	0.950	1.010	2,293	2,185	2,262
Oklahoma	4,000	20,000	17,000	1.650	0.850	0.801	6,600	17,000	13,617
South Carolina	960	300	60	1.350	1.250	1.500	1,296	375	90
Texas	6,000	13,000	6,000	1.500	0.840	0.900	9,000	10,920	5,400
Other States	-	-	2,360	-	-	1.130	-	-	2,672
United States	42,670	55,200	46,330	1.610	0.879	0.920	68,825	48,518	42,632
All pecans									
Alabama	19,000	4,000	3,270	1.670	1.310	1.720	31,650	5,258	5,635
Arizona	18,500	20,000	22,500	2.800	1.600	1.900	51,800	32,000	42,750
Arkansas	2,500	2,200	2,700	1.790	1.350	1.400	4,470	2,974	3,781
California	3,700	4,800	5,000	2.670	1.580	2.060	9,879	7,584	10,300
Florida	4,000	2,000	(D)	1.560	0.943	(D)	6,230	1,885	(D)
Georgia	102,000	100,000	89,000	2.590	1.910	1.910	264,600	191,120	170,120
Kansas	1,500	3,000	(D)	1.800	1.350	(D)	2,700	4,050	(D)
Louisiana	10,000	15,000	11,000	1.600	0.900	0.934	16,000	13,500	10,270
Mississippi	5,000	2,500	5,500	1.670	1.170	1.140	8,360	2,925	6,289
Missouri	1,500	2,500	2,740	1.770	0.990	1.070	2,654	2,475	2,932
New Mexico	61,000	65,000	72,000	2.670	1.700	1.900	162,870	110,500	136,800
Oklahoma	6,000	25,000	20,000	1.900	0.990	0.988	11,400	24,750	19,767
South Carolina	3,000	1,800	1,560	1.790	1.670	1.980	5,376	3,000	3,090
Texas	32,000	55,000	28,000	2.430	1.360	1.600	77,900	74,760	44,780
Other States	-	-	3,060	-	-	1.270	-	-	3,876
United States	269,700	302,800	266,330	2.430	1.570	1.730	655,889	476,781	460,390

- Represents zero.

(D) Withheld to avoid disclosing data for individual operations.

¹ Budded, grafted, or topworked varieties.

Crop Comments

Apples: Utilized apple production for 2013 is estimated at 10.3 billion pounds, up 16 percent from 2012. Washington apple growers reported favorable weather conditions resulting in another good crop, following the record high crop of 2013. New York's apple growers reported excellent growing conditions characterized by dry and sunny weather late in the growing season, which allowed plenty of high quality fruit to be harvested. The Michigan apples recovered from the weather induced crop disaster of 2012. Warm weather near the end of the spring season brought phenological development to near normal levels.

Grapes: Utilized grape production for 2013 is estimated at 8.59 million tons, up 14 percent from 2012. The California crop, which accounts for 90 percent of the 2013 United States utilized grape production, is up 13 percent from the previous year. In New York, the utilized production rebounded after having a relatively bad year in 2012.

The grape crop in California developed well in 2013 due to the warm spring temperatures. Table grapes experienced the highest production on record.

Peaches: Utilized peach production for 2013 is estimated at 886,601 tons, down 8 percent from the previous year. The California crop, accounting for 73 percent of the United States utilized peach production, is down 9 percent from 2012.

In California, the Freestone peaches received sufficient chilling hours that benefited the crop. Bloom was late, but warm temperatures accelerated crop development which resulted in an early harvest. Good quality and sugar were reported.

The Clingstone peach crop experienced sufficient chilling hours and ideal weather conditions during bloom. Full bloom occurred five days ahead of the previous year. Weather conditions following bloom were generally mild and dry, which allowed growers sufficient time for disking, chopping, and strip-spraying activities. Fruit sizes were small in the Extra Early varieties due to extreme heat in late-June, however yield improved considerably for the Late and Extra-Late varieties. Harvest ended during the first part of September.

In South Carolina, unseasonably cold weather prevailed during early harvest and excessive rainfall hindered the later stages of harvest. Some farms reported losing some of their early varieties to freezing temperatures in late-March. However, peaches remained in fair to excellent condition during most of growing season. Harvest wrapped up by mid-September.

In New Jersey, Hurricane Sandy damaged orchards in the fall of 2012. The lingering effect was lower bearing acreage and production, as orchardists pruned heavily and cleaned up crop acres.

In Georgia, a colder spring delayed harvest and some early varieties were hurt by frost. As harvest continued, crop conditions improved and overall good weather resulted in increased production from last season. Peaches rated in fair to excellent condition during most of growing season. Harvest was complete around mid-August.

Pears: Utilized pear production for 2013 is estimated at 876,520 tons, up 3 percent from the 2012 estimate. Five of the six estimating States (California, Michigan, New York, Pennsylvania, and Washington) showed increased production from last season.

Growers in Oregon and Washington experienced excellent growing conditions in 2013 with no significant frost damage in the spring. There was good crop pollination and the hot summer weather helped produce fruit of excellent size and quality. Some growers experienced labor shortages during peak harvest and both States reported bearing acreage decreases from a year ago.

In California, an early season heat wave in July negatively impacted yields, after a favorable spring and pollination period. Harvest began in July and continued into October. Crop quality was rated as good.

In Michigan, the winter of 2013 was relatively mild with only a few cold snaps and little damage to tree fruits. The slow, spring warm-up kept growing degree day totals slightly behind season norms. Several large rains throughout April kept

soil moisture at field capacity. Warmer weather in early May dried out soils and brought growing degree days back to normal. A late spring frost occurred on the morning of May 13, where temperatures fell to the upper 20's in many areas. Frost damage to flower blossoms and fire blight infection in pear trees were reported in some parts of the State. Despite these shortcomings, 2013 was a relatively good year for pear production.

Tree nuts: Utilized tree nut production for crop year 2013 is 2.66 million tons (in-shell basis), 1 percent above the previous year. Almond utilized production, at 1.73 million tons is up 5 percent from 2012. Walnut utilized production in 2013, at 492,000 tons, is down 1 percent from the previous year. Pistachio utilized production, at 235,000 tons is 15 percent less than 2012. Pecan utilized production in 2013 is estimated at 133,165 tons, a 12 percent decrease from 2012. The hazelnut crop, at 45,000 tons, is 27 percent above the previous year. Macadamia nut production is 20,500 tons, down 7 percent from 2012.

Value of United States utilized nut production in 2013 is 9.21 billion dollars, up 11 percent from the 2012 value. The 2013 utilized almond crop is valued at 5.77 billion dollars, 20 percent more than the previous year. Pistachio utilized crop value for 2013, at 1.03 billion dollars, is down 28 percent from previous year. The value of the 2013 utilized pecan crop decreased 3 percent to 460 million dollars. Hazelnut utilized crop value, at 121 million dollars, is 86 percent above last year. The 2013 utilized macadamia nut crop is valued at 35.7 million dollars, down 1 percent from 2012.

Definition of Terms

Bearing acreage: An orchard, grove, or vineyard is considered to be of bearing age when it can normally be expected to produce a commercially significant quantity of the crop. Bearing age is a function of many factors including variety, rootstock, year planted, etc.

Apple crop: Apple production estimates are published only for commercial orchards, according to the laws governing crop production reports (7 U.S.C 411b). Commercial orchards, under these laws, are defined as orchards of 100 or more bearing trees.

Harvested not sold: Fruit of marketable quality that was picked but not sold for various reasons up to 2 percent of total production is considered normal seasonal loss and is excluded from total production. Reported values are above and beyond these normal seasonal losses.

Total production: The quantity of a crop actually harvested plus quantities which would have been acceptable for fresh market or processing but were not harvested because of economic or natural reasons are included in production estimates.

Unutilized production: The difference between total and utilized production, which is marketable fruit not harvested for economic or natural reasons and harvested fruit not sold or utilized, is unutilized production.

Unharvested production: Marketable fruit produced, but not harvested for various reasons, is unharvested production. Unharvested amounts up to 2 percent of total production are considered normal seasonal losses and are excluded from total production. Published estimates of unharvested production represent quantities above and beyond these normal seasonal losses.

Utilization: These estimates refer to the first utilization, not necessarily the final utilization of a crop. For example, frozen fruit includes some fruit that may be later used for making preserves. Grade-outs for fresh market fruit which are processed are included in the processing quantity. Fruit graded-out from canning or freezing and utilized for juice is included with juice.

Utilized production: The amount of a crop sold plus the quantities used at home or held in storage represents utilized production.

Yield per acre: Unless otherwise stated, yield per acre is based on total production.

Price and Value Definitions

Price: Except where specified as monthly, prices in this report represent the Market Year Average (MYA) price. For a crop sold for both fresh market and processing, the total crop MYA is a weighted average of the fresh and processing prices.

Prices for fresh fruit represent the average price producers receive at the point of first sale. This is commonly referred to as the average price as sold. The exception is fresh fruit sales in California, Michigan (apples only), New York (apples only), and Washington which are equivalent returns at packinghouse door.

Prices for fruit sold for processing are equivalent returns for fruit delivered to the processing plant door except for cranberries, California olives, and freestone peaches, which are priced at the first delivery point.

Value: Crop value estimates in this report cover the marketing season or crop year and should not be confused with cash receipts which are based on a calendar year.

State MYA Price and Value Computations

Fresh Market Value

Fresh Market MYA * Fresh Market Utilization

Processed Value

Processed MYA * Processed Utilization

"All" Value

Fresh Market Value + Processed Value

"All" MYA

"All" Value / "All" Utilization

For commodities with components not identified by market channel, substitute breakdown name for fresh market/processed and use the same procedure.

United States MYA Price and Value Computations

Fresh Market MYA

$$\frac{\sum(\text{Fresh Market Value For All States})}{\sum(\text{Fresh Market Utilization For All States})}$$

Processed MYA

$$\frac{\sum(\text{Processed Value For All States})}{\sum(\text{Processed Utilization For All States})}$$

"All" MYA

$$\frac{\sum(\text{Value For All States})}{\sum(\text{Utilization For All States})}$$

Marketing Seasons for Noncitrus Fruits

Apples: August to June for Eastern States, excluding Georgia, New Jersey, and South Carolina; July to May for Central States, excluding Iowa, Kentucky, Minnesota, Missouri, Tennessee, and Wisconsin; August to June for Western States, excluding Arizona; August to December for all other states.

Apricots: May 15 to July 5 for California; June 10 to August 15 for Utah; June 20 to August 1 for Washington.

Avocados: November 1 to October for California; June 20 to March 1 for Florida; January 1 to December 31 for Hawaii.

Bananas: January 1 to December 31

Cherries, sweet: April 25 to June 15 for California; July 20 to August 20 for Montana; June to July for all other States.

Cherries, tart: June 25 to August 15

Cranberries: September 15 to January 1

Dates: August 15 to March 15

Figs: June 5 to October 30

Grapes: May 25 to July for Table (California); June 5 to July 31 for Raisin (California); August 15 to December 15 for Wine (California and Washington); September 15 to November 1 for Juice (Washington); July to October for all other States.

Guavas: January 1 to December 31

Kiwifruit: October 1 to May 31

Nectarines: April 30 to October 15

Olives: August 1 to July 31 for Fresh, Canned, and other processing; December 1 to November 30 for Crushed for Oil

Papayas: January 1 to December 31

Peaches: July 10 to September 15 for Clingstone (California); April 20 to October 10 for Freestone (California); May to August for Georgia and South Carolina; July to September for all other States.

Pears: July to December for Bartlett (California, Oregon, and Washington); July to June for other (California, Oregon, and Washington); August to November for all other States.

Plums: May 15 to October 20 for California

Prunes, dried: August 20 to April 15 for California

Prunes and plums: August 15 to October 15 for Fresh and Canning (Idaho, Michigan, Oregon, and Washington)

Marketing Seasons for Tree Nuts

Almonds: August 5 to November 15

Hazelnuts: October 1 to November 30

Macadamia nuts: July 1 to June 30

Pecans: October 1 to March 31

Pistachios: September 30 to January 30

Walnuts: September 15 to November 10

For detail by States, see Agricultural Handbook No. 729, *Fruits and Tree Nuts: Blooming, Harvesting, and Marketing Dates*, December 2006.

Statistical Methodology

Survey Procedures: Non-probability monthly grower surveys are used to collect crop condition, yield, acreage, and production data. These fruit inquiries are generally mailed surveys during the growing season. Telephone follow-up of mail survey non-respondents is used to ensure adequate coverage. Special grower disposition surveys are conducted at the end of each season to provide additional details about the crop. They provide indications of the quantity used on farms, the quantity sold directly to consumers, unharvested production, and production not sold or utilized. All fruit and nut processors or shellers are also surveyed annually to determine quantity handle, utilization, and the origin of the commodity.

Estimating Procedures: Information obtained from the non-citrus fruits and nuts grower surveys along with federal administrative data is used to establish estimates of bearing acres, yield, total production, utilized production, price, and value. These estimates are reviewed for errors, reasonableness, and consistency with historical estimates.

Revision Policy: Final survey indications and check data for most non-citrus fruits and nuts are available prior to submitting utilization estimates. As a result revisions are allowed for a few crops in the spring. End-of-season estimates of production are made following harvest and are subject to revision the following year based on a thorough review of all available data.

Reliability: To assist users in evaluating the reliability of the July noncitrus fruit total production estimates, the "Root Mean Square Error," a statistical measure based on past performance, is computed. The deviation between the first July total production estimate and the final estimate is expressed as a percentage of the final estimate. The average of squared percentage deviations for the latest 20-year period is computed. The square root of the average becomes statistically the "Root Mean Square Error." Probability statements can be made concerning expected differences in the current estimate relative to the final end-of-season estimate, assuming that factors affecting this year's estimate are not different from those influencing recent years. For example, the "Root Mean Square Error" for the July apple total production estimate is 1.3 percent. This means that chances are 2 out of 3 that the current production estimate will not be above or below the final estimate by more than 1.3 percent. Chances are 9 out of 10 (90 percent confidence level) that the difference will not exceed 2.2 percent.

The following table is included with a 20-year record for selected crops of the differences between the first July total production estimate and the final estimate. Using apples again as an example, changes between the first July estimate and the final estimate during the last 20 years have averaged 51.0 thousand tons, ranging from 0.7 thousand tons to 129.5 thousand tons. The first July estimate has been below the final estimate 5 times and above 15 times. This does not imply that the July estimate this year is likely to understate or overstate the final production.

Reliability of Selected Noncitrus Fruit Estimates

[Comparisons for 2012 have been excluded]

Crop	Root mean square error		20-year record of differences between initial estimate and final estimate				
	Percent	90 percent confidence interval	Quantity			Years	
			Average	Smallest	Largest	Below final	Above final
			(1,000)	(1,000)	(1,000)	(number)	(number)
Apples tons	1.3	2.2	51.0	(Z)	129.5	5	15
Grapes tons	0.5	0.9	22.6	(Z)	83.0	13	6
Peaches tons	1.0	1.7	8.2	(Z)	25.1	8	10
Pears tons	1.4	2.4	7.8	(Z)	35.0	6	10

(Z) Less than half of the unit shown.

Information Contacts

Listed below are the commodity statisticians in the Crops Branch of the National Agricultural Statistics Service to contact for additional information. E-mail inquiries may be sent to nass@nass.usda.gov

Lance Honig, Chief, Crops Branch	(202) 720-2127
Jorge Garcia-Pratts, Head, Fruits, Vegetables and Special Crops Section.....	(202) 720-2127
Vincent Davis – Fresh and Processing Vegetables, Onions, Strawberries, Cherries	(202) 720-2157
Fred Granja – Apples, Apricots, Plums, Prunes, Tobacco	(202) 720-9085
LaKeya Jones – Citrus, Coffee, Grapes, Sugar Crops, Tropical Fruits.....	(202) 720-5412
Greg Lemmons – Berries, Cranberries, Potatoes, Sweet Potatoes	(202) 720-4285
Dave Losh – Hops	(360) 709-2400
Dan Norris – Austrian Winter Peas, Dry Edible Peas, Lentils, Mint, Mushrooms, Peaches, Pears, Wrinkled Seed Peas, Dry Beans	(202) 720-3250
Daphne Schaubert – Floriculture, Maple Syrup, Nursery, Tree Nuts	(202) 720-4215

Access to NASS Reports

For your convenience, you may access NASS reports and products the following ways:

- All reports are available electronically, at no cost, on the NASS web site: <http://www.nass.usda.gov>
- Both national and state specific reports are available via a free e-mail subscription. To set-up this free subscription, visit <http://www.nass.usda.gov> and in the “Follow NASS” box under “Receive reports by Email,” click on “National” or “State” to select the reports you would like to receive.

For more information on NASS surveys and reports, call the NASS Agricultural Statistics Hotline at (800) 727-9540, 7:30 a.m. to 4:00 p.m. ET, or e-mail: nass@nass.usda.gov.

The U.S. Department of Agriculture (USDA) prohibits discrimination against its customers, employees, and applicants for employment on the basis of race, color, national origin, age, disability, sex, gender identity, religion, reprisal, and where applicable, political beliefs, marital status, familial or parental status, sexual orientation, or all or part of an individual's income is derived from any public assistance program, or protected genetic information in employment or in any program or activity conducted or funded by the Department. (Not all prohibited bases will apply to all programs and/or employment activities.)

If you wish to file a Civil Rights program complaint of discrimination, complete the [USDA Program Discrimination Complaint Form](#) (PDF), found online at http://www.ascr.usda.gov/complaint_filing_cust.html, or at any USDA office, or call (866) 632-9992 to request the form. You may also write a letter containing all of the information requested in the form. Send your completed complaint form or letter to us by mail at U.S. Department of Agriculture, Director, Office of Adjudication, 1400 Independence Avenue, S.W., Washington, D.C. 20250-9410, by fax (202) 690-7442 or email at program.intake@usda.gov.