

# Police & Suicide Prevention: SANE-SupportLink Outreach Partnership

Conference on Law Enforcement and Public Health  
Melbourne  
13 November 2012

# Presentation Outline

- SANE overview
- Suicide Data
- Childhood Sexual Abuse, Mental Illness & Suicide
- SANE-SupportLink Partnership
- Story of Police & Suicide

# SANE Australia

- Mission:
  - To help all Australians affected by mental illness lead a better life
- Values:
  - Respect
  - Responsibility
  - Innovation
  - Collaboration
  - Celebration
- Activities
  - Education, Advocacy, HelpLine, Suicide Prevention, Stigma Reduction, Emergency Services, Mental Health at Work, Mind & Body, Speakers

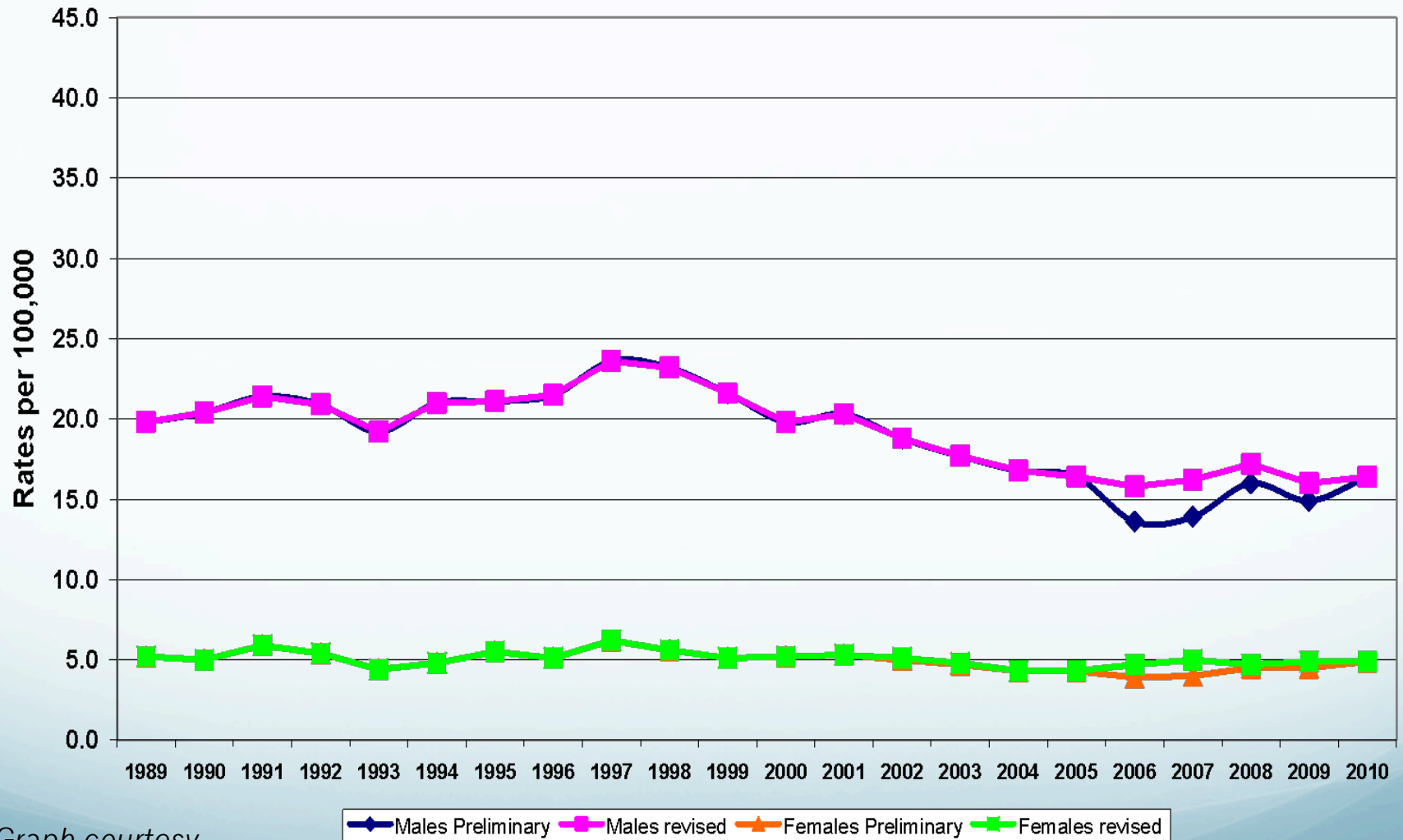
# SANE History

- 26 years championing a better life for Australians affected by mental illness in all its forms
  - working directly with people affected by mental illness, including family, carers and friends
  - a provider of clear, concise and authoritative information about mental illness and where to get help;
  - a leader in practical research with people directly affected by mental illness on issues critical to their wellbeing, including accommodation, employment and emergency services;
  - an independent and respected voice in the MH sector

# SANE Vision

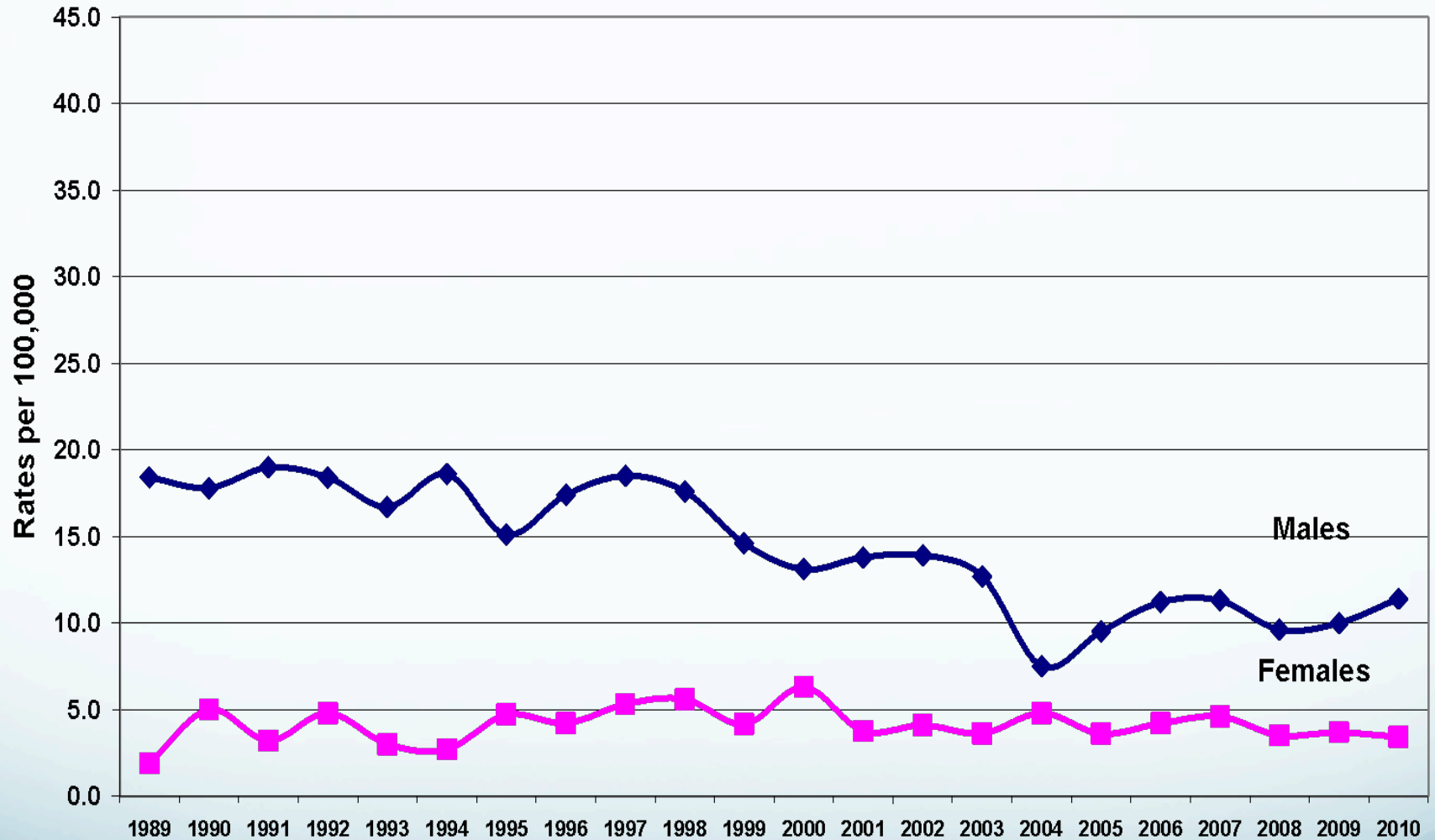
- For Australia to lead the world in mental health services, programs and outcomes by 2022
  - Needs specific measurable goals
- First Goal
  - Reduce the suicide rate by 50% over next ten years
    - Member of the Suicide Prevention Coalition

## Suicide Rates, All Ages, 1989-2010, by Sex

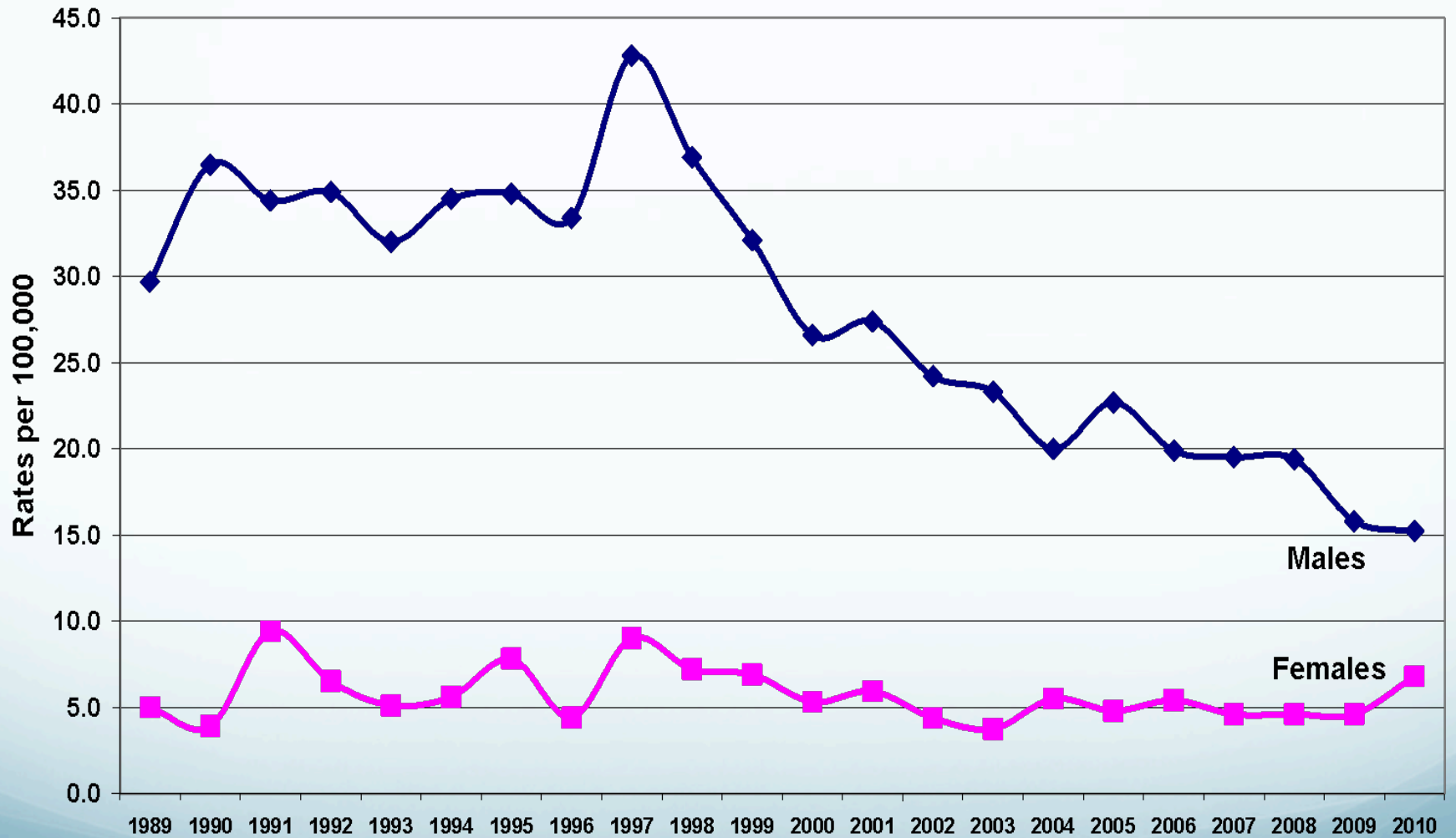


(Graph courtesy  
of MH)

## Suicide Rates, 15-19 Years, 1989-2010, by Sex

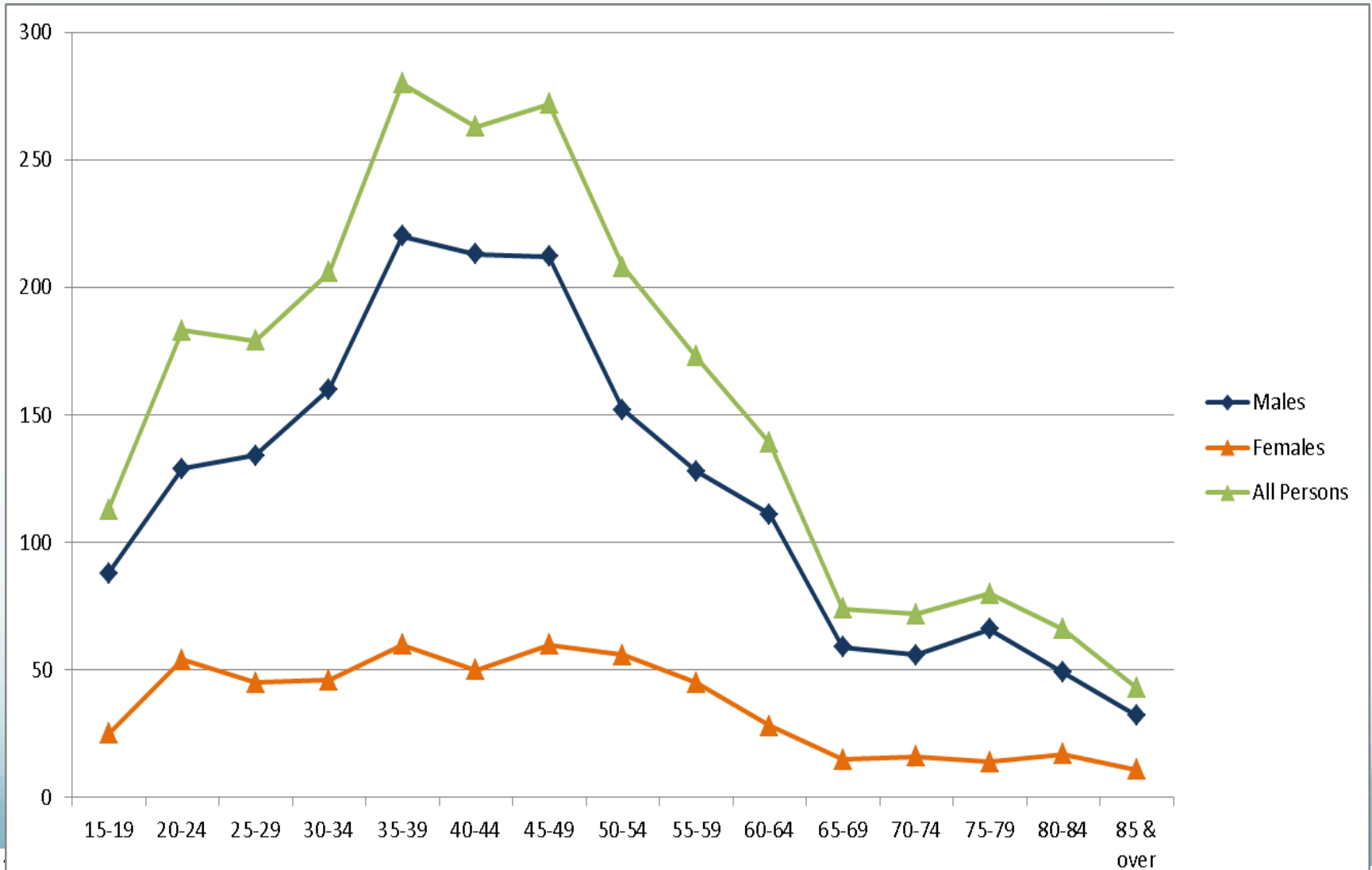


### Suicide Rates, 20-24 Years, 1989-2010, by Sex





# Number of Suicides 2010, Preliminary: By Sex by 5-Yr Age Group



# Childhood Sexual Abuse, Mental Illness & Suicide

- Survey of 782 people with schizophrenia – 29% men encountered childhood sexual abuse and 49% women
- Some forms of CSA 8.6x diagnosis of schizophrenia & 17x psychosis
- Higher rates of PTSD for US men from CSA (54%) than combat (39%) 1995
- CSA 4x more likely to attempt suicide
- Australian survey young survivors of CSA had suicide rate 10.7-13.0x national average
- 2010 Victorian study found CSA 18x likely to die by suicide

# Helping Police

- First on scene of trauma or suicide
  - 2300 suicides in 2010
- Deal with horror
- Families after suicide traumatised and in need of support
- SupportLink works to help police help others

# SANE-SupportLink Partnership

- SupportLink partners with police and emergency services and provides referrals to SANE
- SANE reaches out to people in psycho-social crisis, and their families, to provide information, advice and referrals for ongoing treatment support
- Operating since Aug 2010 with 2,800 referrals
  - Queensland – 1839
    - Substantial outreach to rural communities
  - ACT – 145
  - Victoria – 752
- 120% growth 2012 (50 per week) on 2011
- 7% suicide-related to SANE + Suicide Call Back Service

