



# NASS

FACT FINDERS FOR AGRICULTURE  
UNITED STATES DEPARTMENT OF AGRICULTURE

Washington, D.C.

# Turkeys Raised

---

Released August 23, 2007, by the National Agricultural Statistics Service (NASS), Agricultural Statistics Board, U.S. Department of Agriculture. For information on *Turkeys Raised* call Toby Paterson at 202-720-0585, office hours 7:30 a.m. to 4:00 p.m. ET.

## Turkeys Raised Up 4 Percent from 2006

The preliminary estimate of turkeys raised in the United States during 2007 is 272 million, up 4 percent from the number raised during 2006.

The following six States are expected to account for about two-thirds of the turkeys produced in the United States during 2007: **Minnesota**, at 46.0 million turkeys, is up 2 percent from last year; **North Carolina**, at 39.0 million turkeys, is up 4 percent from last year; **Arkansas**, at 31.0 million turkeys, is up 3 percent from a year ago; **Virginia**, at 21.5 million turkeys, is unchanged from 2006; **Missouri**, at 21.0 million turkeys, is up 5 percent from last year; and **California**, at 16.8 million turkeys, is up 6 percent from last year.

**Number Raised by State and United States, 2006-2007**

State	Number Raised <sup>1</sup>		2007 as % of 2006
	2006 <sup>2</sup>	2007	
	<i>1,000 Head</i>	<i>1,000 Head</i>	<i>Percent</i>
AR	30,000	31,000	103
CA	15,800	16,800	106
IL	2,700	2,800	104
IN	13,800	15,400	112
IA	8,200	7,800	95
MD	730	800	110
MA	62	62	100
MI	4,600	4,200	91
MN	45,000	46,000	102
MO	20,000	21,000	105
NJ	33	34	103
NY	630	620	98
NC	37,500	39,000	104
ND	1,800	2,000	111
OH	5,100	5,100	100
PA	10,500	10,500	100
SC	9,600	10,500	109
SD	4,200	4,600	110
VT	55	60	109
VA	21,500	21,500	100
WV	3,600	3,700	103
Oth Sts <sup>3</sup>	27,050	28,200	104
US <sup>4</sup>	262,460	271,676	104

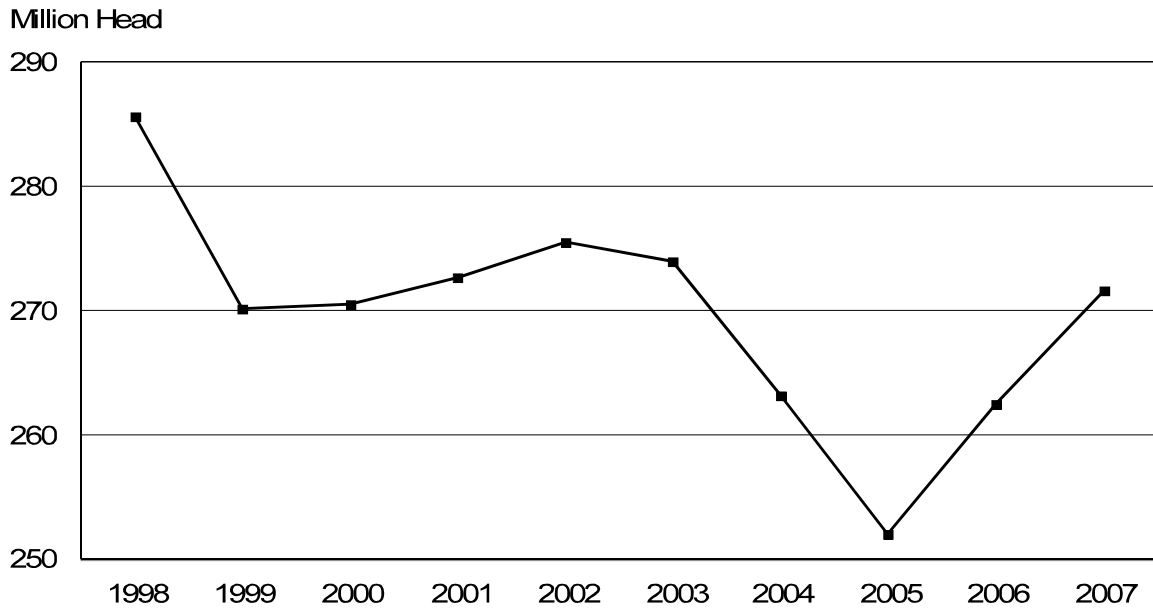
<sup>1</sup> Excludes young turkeys lost.

<sup>2</sup> Revised.

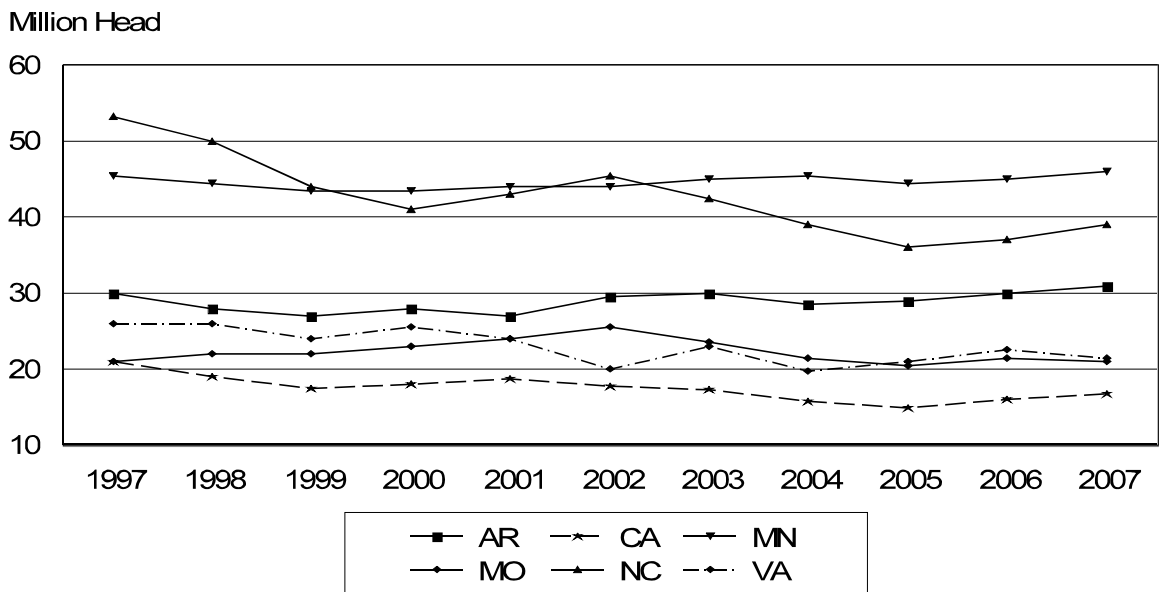
<sup>3</sup> CO, KS, NE, OK, TX, UT, and WI combined to avoid disclosing individual operations.

<sup>4</sup> 28 State total.

## Number of Turkeys Raised United States, 1998-2007



## Number of Turkeys Raised Major States, 1997-2007



## Turkeys Raised Estimates

**Data Sources:** The monthly Turkey Hatchery Survey provides the basis for the preliminary turkeys raised estimates published in August. Turkey hatchery estimates are made in 18 States each month and provide the number of eggs in incubators, poults hatched, and net poults placed in production. United States import and export data are included in the preliminary estimates for turkeys raised.

**Estimation Procedures:** Turkeys raised preliminary estimates include young turkeys intended for meat production, as well as breeder turkeys which reach maturity during the calendar year. These estimates exclude turkeys lost to disease or those destroyed. Placement of turkey poults from the monthly Turkey Hatchery Survey provide the basis for the preliminary estimates published in August. Final estimates, published in January, use indications from the December Growers Survey in addition to updated hatchery data. Other indications for the final estimates are obtained from monthly slaughter totals and check-off data provided by individual State turkey or poultry associations.

**Revision Policy:** Estimates for the previous year are subject to revision when preliminary raised estimates are made in August. Revisions are primarily based on updated hatchery and slaughter data, and at the U.S. level, are usually less than one-half of one percent of the final estimate published in January. Estimates are also reviewed after data from the five-year Census of Agriculture are available. No revisions are made after five-year census data revisions have been published.

**Reliability:** Turkeys raised preliminary estimates are based on a census of known active hatcheries and, therefore, have no sampling variability. However, estimates may be subject to errors such as omissions, duplication, and mistakes in reporting, recording, and processing of the data. These errors are minimized through strict quality controls in the edit and summarization process, and a careful review of all reported data for consistency and reasonableness.

To assist in evaluating the reliability of the estimates in this report, the “Root Mean Square Error” is shown for selected items in the following table. The “Root Mean Square Error” is a statistical measure based on past performance and is computed using the differences between first and final estimates. The “Root Mean Square Error” for number of turkeys raised over the past 10 years is 0.9 percent. This means that chances are 2 out of 3 that the final estimate will not be above or below the current estimate of 272 million turkeys by more than 0.9 percent. Chances are 9 out of 10 that the difference will not exceed 1.7 percent.

**Reliability of Turkeys Raised Estimates <sup>1</sup>**

Item	Root Mean Square Error	90 Percent Confidence Level		Difference Between First and Latest Estimates			Number of Years	
				Average	Smallest	Largest	First Above Latest	First Below Latest
				<i>1,000</i>	<i>1,000</i>	<i>1,000</i>	<i>Number</i>	<i>Number</i>
Number Raised	0.9	1.7	4,412	1,794	0	4,848	4	5

<sup>1</sup> Based on data for the past 10 years.

## Information Contacts

Listed below are the commodity specialists in the Livestock Branch of the National Agricultural Statistics Service to contact for additional information.

Dan Kerestes, Chief, Livestock Branch ..... (202) 720-3570

Darin Jantzi, Head, Poultry and Specialty Commodities Section ..... (202) 720-3570

David Colwell - Cold Storage ..... (202) 720-8784

Fleming Gibson - Egg Products, Poultry Slaughter, Catfish Processing, Mink ..... (202) 690-3237

Darin Jantzi - Layers, Eggs ..... (202) 720-3570

Sharyn Lavender - Broiler Hatchery, Chicken Hatchery, Honey ..... (202) 720-3244

Toby Paterson - Catfish Production, Trout Production, Census of Aquaculture,  
Turkey Hatchery, Turkeys Raised ..... (202) 720-0585

## ACCESS TO REPORTS!!

---

For your convenience, there are several ways to obtain NASS reports, data products, and services:

### INTERNET ACCESS

All NASS reports are available free of charge on the worldwide Internet. For access, connect to the Internet and go to the NASS Home Page at: [www.nass.usda.gov](http://www.nass.usda.gov).

### E-MAIL SUBSCRIPTION

All NASS reports are available by subscription free of charge direct to your e-mail address. Starting with the NASS Home Page at [www.nass.usda.gov](http://www.nass.usda.gov), under the right navigation, *Receive reports by Email*, click on **National** or **State**. Follow the instructions on the screen.

-----

### PRINTED REPORTS OR DATA PRODUCTS

**CALL OUR TOLL-FREE ORDER DESK: 800-999-6779 (U.S. and Canada)**  
**Other areas, please call 703-605-6220      FAX: 703-605-6900**  
**(Visa, MasterCard, check, or money order acceptable for payment.)**

-----

### ASSISTANCE

For **assistance** with general agricultural statistics or further information about NASS or its products or services, contact the **Agricultural Statistics Hotline** at **800-727-9540**, 7:30 a.m. to 4:00 p.m. ET, or e-mail: [nass@nass.usda.gov](mailto:nass@nass.usda.gov).

The U.S. Department of Agriculture (USDA) prohibits discrimination in all its programs and activities on the basis of race, color, national origin, age, disability, and where applicable, sex, marital status, familial status, parental status, religion, sexual orientation, genetic information, political beliefs, reprisal, or because all or a part of an individual's income is derived from any public assistance program. (Not all prohibited bases apply to all programs.) Persons with disabilities who require alternative means for communication of program information (Braille, large print, audiotape, etc.) should contact USDA's TARGET Center at (202) 720-2600 (voice and TDD).

To file a complaint of discrimination, write to USDA, Director, Office of Civil Rights, 1400 Independence Avenue, S.W., Washington, D.C. 20250-9410, or call (800) 795-3272 (voice) or (202) 720-6382 (TDD). USDA is an equal opportunity provider and employer.

## **USDA Data Users' Meeting**

**October 29, 2007**

**Crowne Plaza Chicago O'Hare**

**Rosemont, Illinois**

**(847) 671-6350**

The USDA's National Agricultural Statistics Service will be organizing an open forum for data users. The purpose will be to provide updates on pending changes in the various statistical and information programs and seek comments and input from data users. Other USDA agencies to be represented will include the Agricultural Marketing Service, the Economic Research Service, the Foreign Agricultural Service, and World Agricultural Outlook Board. The Foreign Trade Division from the Census Bureau will also be included in the meeting.

For registration details or additional information for the Data Users' Meeting, see the NASS homepage at [www.nass.usda.gov/forum/](http://www.nass.usda.gov/forum/) or contact Marjorie Taylor (NASS) at (202) 690-8141 or at [marjorie\\_taylor@nass.usda.gov](mailto:marjorie_taylor@nass.usda.gov).

This Data Users' Meeting precedes an Industry Outlook meeting that will be held at the same location on October 30, 2007. The Outlook meeting brings together analysts from various commodity sectors to discuss the outlook situation. For registration details or additional information for the Industry Outlook Meeting see the Livestock and Marketing Information Center (LMIC) homepage at [www.lmic.info](http://www.lmic.info) or contact Jim Robb at (720) 544-2941 or at [robb@lmic.info](mailto:robb@lmic.info).