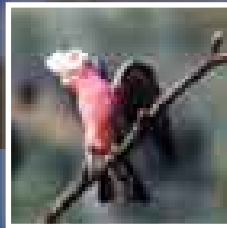
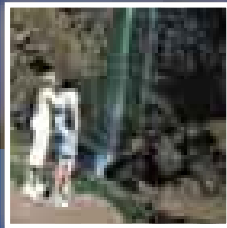


Heart of the Scenic Rim

BOONAH SHIRE, QUEEN MARY FALLS, RATHDOWNEY,
MT BARNEY AND BEYOND



www.boonahtourism.org.au



Police, Fire & Ambulance	000
Boonah Police	5463 3999
Kalbar Police	5463 7201
Fire Station	5541 4827
Boonah Hospital	5463 3300
Boonah Medical Centre	5463 1200
Leonard St Medical Centre	5463 2266
Kalbar Medical Centre	5463 1200
Boonah Pharmacy	5463 1542
Boonah Veterinary Clinic	5463 1339
Kalbar Veterinary Clinic	5463 7260
Local Newspaper "Fassifern Guardian"	5463 1888

Service Clubs

ROTARY Each Thursday	5463 1024
QUOTA 2nd & 4th Wednesday	5463 1615
LIONS 1st & 3rd Monday	5463 1530
PROBUS 3rd Wednesday	5463 1300

Church Services

(Please phone for times)

ANGLICAN

Boonah, Harrisville & Kalbar	5463 1879
Rathdowney	5541 1015

UNITING CHURCH

Boonah & Kalbar	5463 1052
Barney View & Rathdowney	5541 1018

CHURCH OF CHRIST

Boonah	5463 0999
--------------	-----------

FASSIFERN LUTHERAN CHURCH

Boonah, Harrisville & Kalbar	5463 1194
------------------------------------	-----------

CATHOLIC

Rathdowney	5541 1068
Boonah	5463 1057

BAPTIST

Boonah	5463 7671
Kalbar	5463 7045

SALVATION ARMY

Boonah	5463 1282
--------------	-----------

ATMs

Commercial Hotel	39 High St, Boonah
Commonwealth Bank	15 High St, Boonah
Bendigo Bank	High St, Boonah
Kalbar Fruit & Veg	(in store)
Kalbar General Store	(in store)
Rathdowney Hotel	(in hotel)
Rathdowney News	(in store)

Visitor Information Centres

BOONAH SHIRE VISITOR INFORMATION CENTRE

Bicentennial Park, Boonah-
Fassifern Rd, Boonah Q 4310
Phone (07) 5463 2233
Email: vic@boonah.qld.gov.au

RATHDOWNEY VISITOR INFORMATION CENTRE

Mt Lindesay Hwy,
Rathdowney Q 4287
Phone (07) 5544 1222
Email: info@rathdowney.org.au

For further information contact:

BOONAH SHIRE TOURISM INC.

PO Box 184
Boonah Q 4310
www.boonah tourism.org.au

This publication has been compiled by Boonah Shire Tourism Inc. Every effort has been made to ensure the accuracy and reliability of the information contained in this publication. Boonah Shire Tourism Inc. accepts no responsibility or liability for the accuracy of the information presented. © Boonah Shire Tourism Inc.



The vibrant and sustainable rural townships of the Scenic Rim offer diverse growth, business, employment and lifestyle opportunities.

From tourism to manufacturing, agriculture and wine industries, the Scenic Rim is an innovative region for those with vision and enterprise. With all the amenities of its city counterparts teamed with strong community spirit, the Scenic Rim really is a great place to visit, but an even better place to live.

FOR MORE INFORMATION VISIT...

www.boonah.qld.gov.au



Contents

Boonah Shire Services Information	2	Historic Cemeteries	21
Boonah Shire & What's On	4	National Parks	22
Kalbar	8	Rathdowney & Mt Barney Region	26
Aratula	10	The Falls Drive - Queen Mary Falls	31
Food & Wine	12	Accommodation	33
Art & Culture	15	Fishing	40
Things To Do	17	Pamper Yourself	41
		Scenic Rim Map	42



Boonah Shire

Located in the heart of the Scenic Rim of South East Queensland, Boonah Shire is only one hour's drive south west of Brisbane and one and a half hours' drive west of the Gold Coast.

Covering an area of 1921 square kilometres, Boonah is home to approximately 8,600 residents. Situated 80 metres above sea level, Boonah boasts a sub-tropical climate of warm wet summers and mild dry winters.

The beautiful Boonah Shire is a premier area for agricultural and horticultural production. Food processing is also an important

industry and our products can be found in the nearby cities.

The Shire is nestled among World Heritage-listed country and boasts a great range of recreation activities to suit all. With numerous award-winning products from wine and olives to local jams and natural

cosmetics, there is something for everyone to sample, taste and take away. The country markets

showcase local produce and wares while traditional skills are utilised in the renovation of many old hotels, houses and cottages around the district.

With all its natural beauty Boonah has emerged as one of South East Queensland's primary tourism destinations offering a vast range of activities and sight-seeing for the tourist not only looking for a day trip but those seeking a short break or longer term holiday. From its spectacular scenery to the charm of its country towns there is something to suit everyone's aspirations.

Lake Moogerah and Lake Maroon are popular places for sailing, water skiing, fishing and for those just wanting to relax over a picnic lunch in beautiful surroundings.

Browse on further to discover for yourself what the Heart of the Scenic Rim has to offer.

What's On... EVENTS

January

Rathdowney Rodeo 5544 3174
Australia Day Celebrations
5463 3000

February

Jazz & Classical Music Picnic at
Zengarra 5463 5600

April

Moogerah Passion Play
5463 5591

Rathdowney Heritage Festival
5544 1222

Rathdowney Easter Bush Dance
5544 1222

Rathdowney Campdraft
5544 3174

May

Boonah Show 5463 1427

June

Discover Mount Barney
Passport Tour 5544 3233

Queensland Day – Templin
Museum 5463 1970

Kalbar Show 5463 7630

August

Seniors' Week activities
5463 3000

September

Art Collective Festival, Boonah

October

Boonah Orchid Show

Annual Rathdowney Bowls
Carnival 5544 1156

Boonah Campdraft & Rodeo
5463 5228

November

Australian Open Garden
"Discover Mt Barney" 5544 3285
Kalbar Country Day 5463 7551

December

Boonah Christmas Street Party
5463 0016

Boonah Carols by Candlelight
5463 0016



Boonah, the main town of the region, is the hub for business, commerce and local government. A visit to the Cultural Centre and Regional Art Gallery is recommended. There is a busy shopping area with a wide range of shops, cafés, historic pubs, art galleries, antique and craft shops. You can easily spend a few hours enjoying the laid-back country town atmosphere.

- 19 Art & Soul Gallery Café**
Advertisement page 16
- Antiques on Railway**
Advertisement page 20
- Boonah Automatics**
Advertisement page 7
- Boonah Boots & Saddles**
Advertisement page 6
- Boonah Cultural Centre**
Advertisement page 16
- Boonah Jewellery & Gifts**
Advertisement page 6
- Commerical Hotel**
Advertisement Back Cover
- Flavours Café**
Advertisement page 13
- The Full Boonah**
Advertisement page 16
- Glens Diner**
Advertisement page 13
- Jon King Real Estate**
Advertisement page 6
- Maynards Store**
Advertisement page 20
- Outdoors & More**
Advertisement page 20
- Scenic Rim Tyres**
Advertisement page 6
- Simon's Tavern**
Advertisement page 13
- Valley Fresh Fine Foods**
Advertisement page 6
- Wybellina's Coffee Shop**
Advertisement page 12



ValleyFresh
Fine Foods

Tony and Lois Richardson and staff invite you to come in and see their large range of quality fruit and vegetables at value for money prices. Also available are certified organic produce, deli lines and a large range of gourmet foods. Wholesale produce and free home delivery available.

Ph: 5463 1695
15 High Street, Boonah

Jon King Pty Ltd
Real Estate Agents
& Auctioneers

Specialists in all types of Real Estate in the beautiful Boonah Shire. Talk to anyone of our efficient team for friendly down to earth service and honest approach with NO pressure.

07 5463 2700 Jason 0438 631 959
Carl 0407 177 948 Jon 0409 051 008

Local Skills - Local Knowledge




BOONAH REAL ESTATE PTY LTD

Sales & Rentals
07 5463 1455

14 Coronation Drive BOONAH
www.boonahrealestate.com.au

Boonah Jewellery & Gifts

Extensive range of jewellery, crystals and gift items.
Quality watch and clock repairs, trophies and engraving.
Baubles, watch and jewellery repairs.

2A Church Street, Boonah Qld 4310
Phone: (07) 5463 1347

Robert Dimeo J.L.L.L.
Jackie Curran

one stop shop



Boonah
Boots & Saddlery

2 Church St Boonah Q 4310
(07) 5463 1650

New, used, custom & repaired boots & saddlery
All your Equestrian Needs

SCENIC RIM TYRES



12 Railway St (behind OPP's)

4 Wheel Laser Alignment
Computer Balancing
Suspension
Steering
and Brake Specialist

Big City Service at small town prices

5463 4438

BOONAH HARDWARE MITRE 10:

Hardware, building supplies and gift lines. Open 7 days a week.

Yeates Ave, Boonah Q 4310

Ph: (07) 5463 1805 Fax: (07) 5463 2099

BOONAH NEWSAGENCY: Lotto, stationery & gifts. Open Mon

- Fri 6am to 5.15pm, Sat 6.30am to 12 noon & Sun 6.30am to

11.30am. 43 High St, Boonah Q 4310 Ph: (07) 5463 1105

Email: bnews@ozsell.com**CONCEPT PRO:** Mortgage broking, investment choices, real estate agency, financial advice. 72 High St, Boonah Q 4310

Ph: 1300 551 998 Mobile: 0405 495 787

Email: conceptpro@msn.com**INTERNET CAFÉ AND ONE HOUR PHOTOS:** Computer repairs, broadband and dialup internet provider, all photo processing and passport photos. 80 High St, Boonah Q 4310Ph: (07) 5463 1168 Email: webmaster@ozsell.com**THE FULL BOONAH:**

Dig up your past. Over a million family histories! Certified authentic. Future family heirlooms. Authentic Aboriginal art and didgeridoos always available. Specialist photography including macro and panoramas. Open weekdays 9.30am to 5.30pm, weekends 10am to 2pm.

64 High St, Boonah Q 4310

Ph: (07) 5463 2020 Email: orders@fullboonah.com

For all the latest information, visit
www.boonah tourism.org.au

BOONAH AUTOMATICS



4 GRADE MECHANICAL REPAIRS

AUTOMATIC TRANSMISSION SPECIALISTS

FUEL INJECTION REPAIRS

ROADWORTHY INSPECTION STATION

AUTHORISED VEHICLE MODIFICATION INSPECTIONS

12 Railway St behind OPP's **5463 2450**

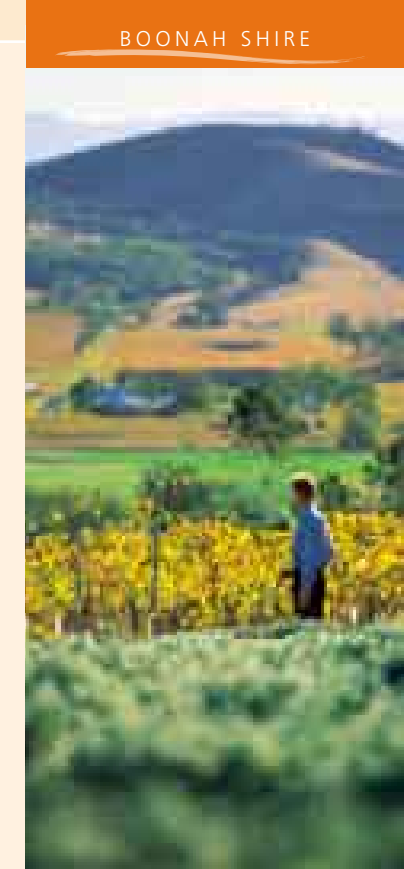
BOONAH CARRYING Co.

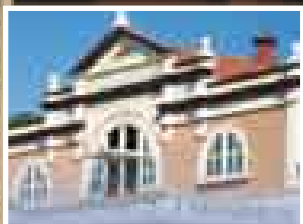
BRISBANE - BOONAH - TOOWOOMBA
DAILY SERVICE (07) 5463 1086

- General Freight Carriers
- Furniture Removal
- Licensed Drinking Water Carrier
- Parcel Service
- Crane Truck Hire

Boonah Depot:
9 Mt French Rd, Boonah Q 4310
Fax: (07) 5463 2866

Brisbane Depot:
44 Shettleston St, Rocklea Q 4106
Ph: 0409 052 718





Kalbar is one of the oldest settlements in Fassifern. It was originally called Engelsburg after one of the earliest settlers but was changed to Kalbar around World War 1. There are many historic buildings in the town and it is worth stopping here for a look around, perhaps check out the art & craft shops, have a meal or a coffee or treat yourself to a night in one of the B&B's.

Kalbar

The town of Kalbar is situated in the fertile Fassifern Valley with magnificent views of the Scenic Rim.

Kalbar has a rich German history which is reflected in many historic sites around town.

churches, a retirement village, parks and gardens.

Attractions include heritage-listed buildings Wiss Emporium, Wiss House and other magnificent houses, a café and Art gallery, all of bygone days which reflect the heritage of the town.

As a secondary commercial and service centre in the Shire, Kalbar offers shopping facilities, a civic centre, hotel, showgrounds, school, historical

- 1 Police
- 2 Post Office
- 3 Fire Station
- 4 Primary School
- 5 Kalbar Real Estate
- 6 Fassifern Hair, Beauty & Massage
Advertisement page 41
- 7 Kalbar Newsagency

- 8 Art Café du Kalbar
Advertisement page 12
- 9 Kalbar Supermarket
- 10 The Rug Maker
- 11 Caring Massage
Advertisement page 41
- 12 Kalbar Fruit and Veges
- 13 Wiss House B&B
- 14 Stark House B&B
Advertisement page 37



KALBAR REAL ESTATE

Specialising in Homes, Residential Land, Acreage and Farms

07 5463 7555

105 George Street KALBAR
www.kalbarrealestate.com.au

Kalbar NEWSAGENCY

Newsprint • Home delivery
Magazines • Cold coffee
Large range of gifts and holiday items

Ph: (07) 5463 9955
73 Edward St Kalbar Qld 4309

Kalbar Supermarket

Ph: (07) 5463 7328
79 Edward St Kalbar 4309

The Rug Maker

Kalbar Qld 4309

Custom fit Horse Rugs & Combos
Endurance Saddle Blankets
Mail Order Welcome

Ph: 07 5463 5360
Mob: 0416 268 586

DAWN'S A NEW BEGINNING: Ladies' fashions, lingerie and accessories sizes 8 - 30. Also selling pre loved kids' stuff. Open Tues - Fri 9am - 4.30pm and Sat 9am - 11.30am.
97 George St, Kalbar Ph/fax: (07) 5463 7328

ART CAFÉ DU KALBAR Page 12

For all the latest information, visit
www.boonah tourism.org.au

KALBAR FRUIT & VEGES

Takeaways • Videos • Groceries
• Fruit • Vegetables

Open 7 days
Monday to Thursday 8am to 5pm
Friday to Saturday 8am to 7pm
Sunday 8am to 1pm

Call (07) 5463 7511
59 George St. Kalbar Q 4309

Aratula

The village of Aratula is located on the Cunningham Highway at the foot of Cunningham's Gap, serving the local rural community as well as passing traffic.

Aratula offers commercial services, arts & crafts, cafés, a bakery, service stations, a school and School of Arts hall, a hotel, a motel, a caravan park and camping grounds.



Situated on the Cunningham Highway, Aratula is the gateway to many of South East Queensland's national parks. It is a popular place to stop for a break with a good selection of eating places, a large fresh food market where you can stock up on supplies and antique shops to browse through.

- 1 Shell Aratula Road House
- 2 Aratula Markets
- 3 Aratula Traders
- 4 Aratula Café and Antiques
- 5 Overland Spare Parts



1

SHELL Aratula Road House




24 hrs truck fuel • Tasty food
Convenience store • Phone orders welcome

CALL (07) 5463 8182
Cunningham Highway
Aratula Q 4309

2

Aratula Markets
Open 7 days 7am to 6pm
Cunningham Highway, Aratula
Ph: (07) 5463 8144

- Full range of fresh fruit & veg
- Fresh roasted & raw nuts
 - Icy cold drinks
 - Icecreams
- Prepacked confectionery
- Homemade jams & preserves
 - Greek yogurt
 - Wheat & smallgoods
 - plus much more

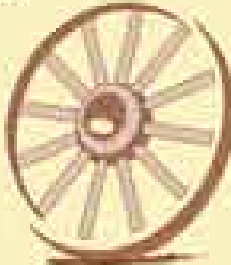
3

Aratula Traders
Buying & Selling

OPEN 7 DAYS

Tel: 0404 772 282
After Hours: 5463 0109

Harry & Lorraine Muller
Elizabeth Street Aratula Q4309



Heritage collectables
Everything old
Furniture - Tools
Toys - Bric a Brac
Books - Old wares
Antique treasures
Hard to find items

4

ARATULA CAFE & ANTIQUES



• Burns welcome • Devonshire Tea
• Burgers • Capoccinos • Craft Shop

OPEN 7 DAYS

Make sure you stop in for our famous burgers and capoccinos!

Lewis and Julie Swann
Cunningham Highway, Aratula Q 4309
Ph (07) 5463 8232

5

OVERLAND SPARE PARTS



Toyota 4WD Specialists
4WD and Car
PARTS AND ACCESSORIES

Large range of quality brand products
Open 6 days
Mon-Fri 8am - 5pm Sat 8am - 4pm
For friendly service and good prices
Ph: (07) 5463 8522
Fax: (07) 5463 8533
EFTPOS and C/Card
6728 Cunningham Hwy, ARATULA

Food & Wine

How far would you go to enjoy some of the best country cuisine on offer? From the traditional country pub to clubs, cafés, wineries and restaurants, it's all here in the Heart of the Scenic Rim.

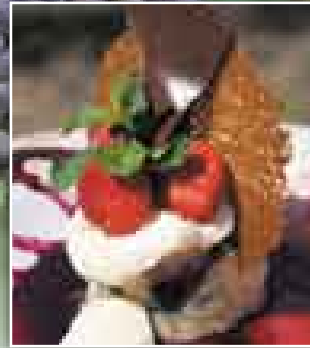
Country dining is still one of the most pleasant experiences available, and even more so after a day of sightseeing and activities.

Picture yourself sitting on a verandah overlooking a beautiful valley with the occasional cloud rolling off the mountain, sipping on a morning cappuccino or enjoying an elegant afternoon tea. How about a decadent dessert? And why not take home your favourite

coffee beans along with a selection of other gourmet products on sale from our many cafés.

Breathe truly fresh air, take in some of the best views around, snuggle up beside a cosy warm fire in winter - a visit to the Scenic Rim is a memorable country culinary experience!

If the romance of wine is more your calling, you will not be disappointed. Just ponder browsing through a leafy vineyard



and then sampling the produce at the cellar door. Award-winning wines abound and you can also enjoy a barbecue or picnic at some wineries.

From a hearty breakfast or relaxing morning tea, to a lunch in a landscaped setting, an afternoon coffee surrounded by artworks, or a romantic candle-lit dinner, it's all here in the Scenic Rim for you to explore and indulge.

ART & SOUL GALLERY CAFÉ Page 16

RESTAURANT ZEST Back Cover

VUE RESTAURANT Page 34

Fine dining in one of Boonah's beautifully restored historic buildings.

Wide variety of cuisine and coffees. Fully licensed & air conditioned. Open seven days. Motorbikes welcome.

PH: (07) 5463 2699 RAILWAY ST, BOONAH Q 4310

Where the bloody hell's Roadvale!

Simply a great place to be, come and see
Great meals • 7 Days • Lunch & Dinner
Entertainment every second Friday night
SLIPDRAWY win up to \$10,000 Friday nights
ROADVALE HOTEL part of the Great South East
Ph (07) 5463 5702

SIMON'S TAVERN

- Meals 7 days
- Extras catered for
- Filter machines & Keros
- Wheelchair access
- Free & Car parking

Your hosts
June and Murray Schneider
88 High Street, Boonah Q 4310
Ph (07) 5463 1007

Wybellina's Coffee Shop

'Beside the Flame Tree'
1/24 High Street
Boonah Q 4310
PH. 5463 2687

ART CAFÉ "DU KALBAR"

NICE FOOD & FINE ART
Open Tues to Sat 10am - 4:00pm, Sun 10:00am - 1:00pm
Join us for breakfast every Sunday 10:00am - 12:00pm
By our famous Sydney coffee, purchase a gift certificate
at home or handmade the finest sausage sizzlers
77 Edward St, Kalbar QLD 4309 Ph (07) 5463 9265
www.pricedirect.com.au www.walbar.com.au/artcafe/dukalbar.html

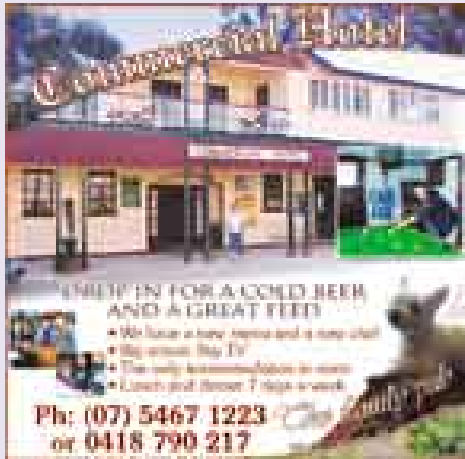
Dugandan Hotel Boonah

Australian Owned & Operated
16 Beers on Tap
Functions catered for
Meals (Lunch & Dinner) 7 Days
Gary & Winnie Parker
Ph: (07) 5463 1948 Fax: (07) 5463 4242
Email dugandan@bigpond.com

Gilroy's Diner

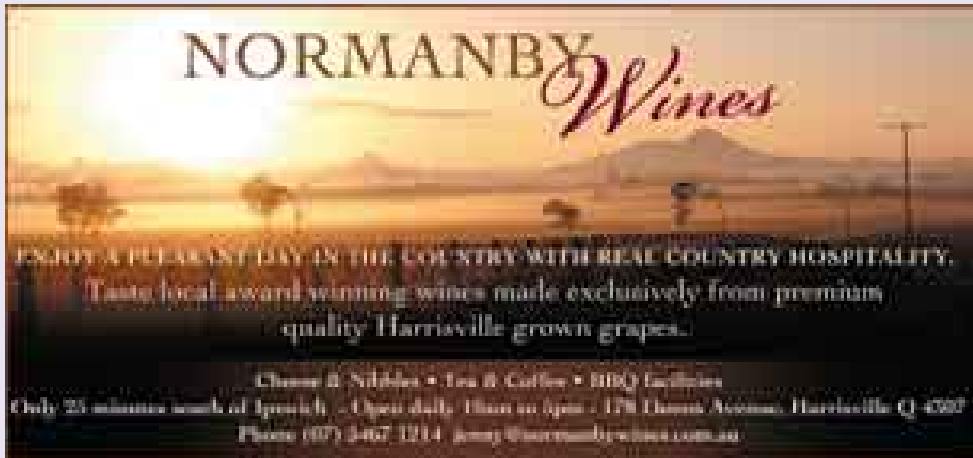
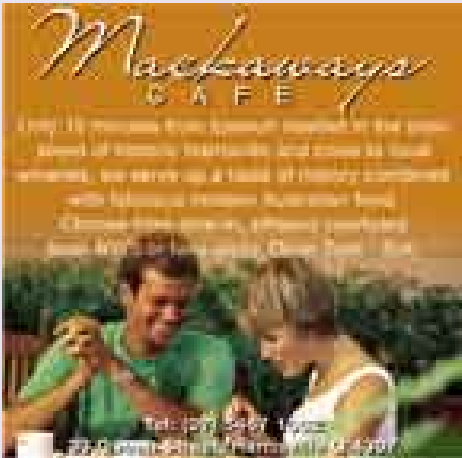
66-68 High Street, Boonah Q4310
Ph (07) 5463 1488
Open Mon to Thurs 7am - 6pm
Fri & Sat 7am - 7pm Sun 8am - 6pm
Closed Wed, Tues & 31st

- Sit in or take-away
- Espresso coffee
- Fast food
- Salad bar
- Golden fried chicken



HARRISVILLE NEWS & GENERAL STORE
Magazines, groceries, drinks, ice cream and cakes. Open 7 days 6am - 6pm. **37 Queen St, Harrisville Q 4307 Ph/fax: (07) 5467 1255 Email: ekmiles@bigpond.com.au**

For all the latest information, visit www.boonah tourism.org.au



Art & Culture

Pastor Armin Bode was an amateur photographer who lived in Boonah Shire at the turn of the 20th century. Due to his enthusiasm, a period of history has been captured in a priceless collection of photographs depicting everyday life in a rural Queensland town.

An experimental photographer, several works show his successful attempts at double and triple exposures. In one example, the pastor is playing chess with himself while in another his cousin, Walter Sturrick, is seen pushing, pulling and sitting on a motor bike! His photographs provide a comprehensive picture of a community at work, at play and in repose, a fitting testimony to a

unique - and until now - unsung photographic talent.

Today, the Shire is home to many artists and craftspeople from across all disciplines. There are photographers, visual artists, sculptors, textile workers, quilters, wood turners, glass workers, jewellery makers, writers, film makers, multi-media artists, dancers, actors, musicians and singer/songwriters. Their talents are on display in parks, art galleries, local businesses and also feature at local festivals, country markets and events.

The Boonah Shire has a tradition of arts and cultural events. The Boonah Art Collective is a group of professional artists and lovers of art whose members organise an annual arts festival which culminates in a street arts spectacular, a free staged event featuring the talents of local artists and the Boonah community. The event is a celebration of song, dance, drama, lantern sculptures,

fire performers and pyrotechnics. Other events include the Creative Community Symposium, Calico on the Catwalk - a wearable art competition - and the Scenic Rim Art Awards.

Art and craft are a part of the scenery so it is not unusual to walk into a hotel, café, book shop, beauty salon or dress shop and find original works of art on display and for sale.

Story by freelance writer Hilary Beaton



'With an Eye on the Sky' by Catherine Anderson

Boonah & District CULTURAL CENTRE

Movies, Live Performances and more...



Ph (07) 5463 1524 Email: bcccoordinator@boonah.qld.gov.au

MOVIES SCREENING MOST THURSDAYS, FRIDAYS & SATURDAYS. INTERNATIONAL AND NATIONAL PERFORMERS. LIVE MUSIC & MORE.

The Boonah & District Cultural Centre offers a wide range of conference and exhibition facilities all within the one state-of-the-art complex.

Boonah & District
Cultural Centre



Boonah Arts Collective Inc

Our Artists! Our Community!

JOIN NOW!

Whether you are a practising professional, an aspiring artist, or just enjoy being creative the Boonah Arts Collective is for you!

Boonah Arts Collective Inc
PO Box 57, Boonah Q 4310
artscollective@westnet.com.au

THE FULL BOONAH

Art and Photography

Aboriginal Art & Didgeridoos
from NT, WA and Qld
Indigenous artists.

THE FULL BOONAH
2 CHURCH ST
BOONAH

Photographic Art
Displays including
macro photography,
panoramic landscapes,
photos on fabrics,
canvas, metal and wood.
Limited edition prints.

(07) 54638000

www.fullboonah.com

artandsoulgallerycafe



- ♥ As seen on TV's "The Great South-East"
- ♥ Devonshire Teas, Delicious Lunches
- ♥ Wickedly Decadent Desserts
- ♥ Dine in Air-Conditioned Comfort
- ♥ Fine Art & Gifts by Local Artists
- ♥ Watch artists in action on a big screen

Open Wed, to Sun. Bookings Appreciated (BYO)
Phone: 07 5463 2003

Centrally located at the entrance to Boonah
www.artandsoulgallery.com.au



Things to do

Lakes

Lakes Moogerah and Maroon are ideal spots for fishing, water skiing, sailing or canoeing and both have excellent picnic facilities.

Scenic Drives

Driving in the Boonah region you will witness areas of outstanding beauty. Be it the magnificent mountain peaks or the vast fertile areas of the Fassifern Valley you will be inspired by the rich surroundings. Allow time to visit the antique shops in Boonah and Aratula. Try a lakeside drive along the 30km Lake Moogerah Road, which has beautiful views, the dam and gorge, or drive to the end of Mt French Road and take the 200m walk to Mt French lookout. The view is worth every step you take.

Bushwalking

The Scenic Rim is a bushwalker's paradise, with some of the best bushwalking tracks so near Brisbane and the Gold Coast. The widely known Mt Barney region, Mt Maroon, Mt Greville,

Mt French, Spicer's Gap and Lake Moogerah offer walks and climbs of varying levels and distances. Both bushwalkers and mountain climbers alike are rewarded with breathtaking views whilst others feature wildlife and birdwatching.

A Bushwalking Challenge – Mount Greville

Close to Boonah, Kalbar and Aratula lies the Moogerah Peaks National Park, part of the chain of five National Parks. Mount Greville, to the west and south of Lake Moogerah, features the famous Palm Gorge.

This is a steep bushwalk (class 5) but well worth the effort. Mt Greville is 770m and situated in the Moogerah National Park. The bushwalk, starting from Mount Greville Road, encompasses the magnificent Waterfall Gorge and leads to an open area where you have great views of Moogerah Dam and Mt Moon. Grass trees are abundant in this area. On the way down look at the spectacular Palm Gorge, populated with palms, staghorn, elkhorn,

mosses and lichens and with sheer cliff faces on either side.

Wineries and Pubs

With the growing popularity of the wines from the area, winery and pub trails lead you to areas of unspoiled natural beauty. Decide on a driver for the day and head round the wine trail before settling in for dinner and the night in your chosen accommodation – ranging from luxury country houses, bed & breakfasts, motels or a lakeside camp site.

Templin Historical Village

Situated on the road from Boonah to Aratula, before the turnoff onto Lake Moogerah Road is a piece of old Queensland. Templin is a complete early settler's village featuring an interesting collection of relics and records from yesteryear. Sit in a desk and think of the differences in learning from today. Step back in time; learn about our forbears' lifestyles and cultures. There are hundreds of artefacts, memorabilia,

photographs and newspapers to be viewed. Opening hours are Sun 9.30am – 1.30pm; Thurs 10am – noon; other times by appointment. Contact the Fassifern Historical Society on (07) 5463 1970.

Gliders & Ultralights

Experience a flight with a qualified instructor and take in some breathtaking scenery of the Scenic Rim from the air. The Boonah Airfield is approximately 3km from the town along the Boonah-Rathdowney Road. Flights are available weekends and public holidays with other days by prior arrangement.

Golf

Enjoy a round of golf at the Boonah Golf Club. Make an early start and you may find yourself a partner with one of the many kangaroos regularly found feeding on the fairway.

Birdwatching

Our region is particularly well endowed with birdlife. The Fassifern Field Naturalist Club has listed 318 species of birds of which around 158 are commonly seen.

The birds are most active from dawn to mid morning so it is wise to overnight in the Shire to ensure you are in the best vantage points close to dawn, although many birds can still be seen throughout the day. Don't forget to bring your binoculars and your field guide for identifying birds.

Live Music

Boonah is especially blessed when it comes to music. There are choirs, formal and informal music groups who perform regularly throughout the year. A renowned classical pianist plays several times per week, information can be found on the Boonah Shire Tourism website www.boonah tourism.org.au or enquire at the Boonah Shire Visitor Information Centre.

Cultural Centre Boonah

Since its opening, the Cultural Centre has successfully featured many live shows. Details can be found on the Boonah Shire Tourism website www.boonah tourism.org.au which includes upcoming movies and special events.

Call at Boonah Visitor Information Centre to collect brochures on our Heritage Trails

Feathered Friends Trail:

Designed for birdlovers, this trail introduces the abundant and interesting birdlife of Boonah Shire. The map gives the best locations to see birds and likely species to be found.

Colourful Character Trail:

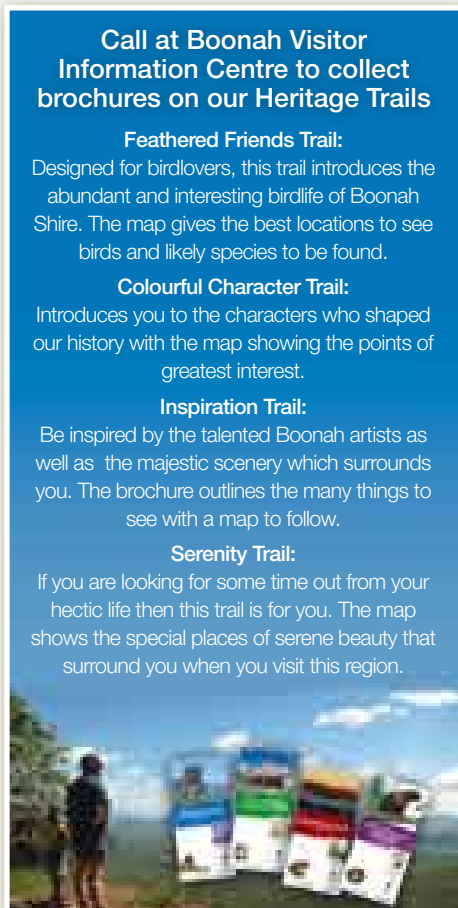
Introduces you to the characters who shaped our history with the map showing the points of greatest interest.

Inspiration Trail:

Be inspired by the talented Boonah artists as well as the majestic scenery which surrounds you. The brochure outlines the many things to see with a map to follow.

Serenity Trail:

If you are looking for some time out from your hectic life then this trail is for you. The map shows the special places of serene beauty that surround you when you visit this region.



Search our extensive database for your family name history and coat of arms!

Australia's largest range of authentic FAMILY HISTORY products made in store.

Family heirlooms for multicultural Australia

THE FULL BOONAH
 2 Church Street, Boonah (near to Village)

www.fullboonah.com Phone orders welcome. (07) 54632020

FLOATING IMAGES
 Hot Air Balloon Flights

Experience SE Qld's only City & Country balloon flight
 The Scenic Rim region's only balloon operator.
 1 Hour Flight & Restaurant Champagne Breakfast.
 Accommodation Packages, Group Discount & Gift Certificates available.
 Will travel & fly over your region.
 Multi Award Winners & Finalists

Call to book or for a brochure
Ph (07) 3294 8770
www.floatingimages.com.au

UNIQUE COUNTRY GOLFING AT ITS BEST

BOONAH Golf Club

Great value at \$15 for 9 holes \$20 for 18 holes
 VISITORS & SOCIETY CLUB WELCOME

Fully covered facilities. Friday Night dining
 Appealing Function Room - weddings are our specialty. From \$27.85 per head (woodrooms apply)

Call us for all your golfing and function needs

Ph (07) 5463 1470
 Email: boonahgolfclub@bigpond.com
 Breaker Hill Road, Boonah Q 4310

Bartons Rose Farm
 Rose Specialist

Display Gardens & Devonshire Tea.
 Potted Roses for sale all year

541 Kent Lagoon Rd, Kallar
 Ph: (07) 5463 8029
 Open Wednesday to Sunday & Public Holidays
www.bartonsrosefarm.com.au

Wharkuroogma
 BOUTIQUE BAKERY - BREADS & WILDLIFE SANCTUARY

Trees / Shrubs / Palms / Ferns / Fruit & Nut Trees / Grasses / Climbers / Ground Covers / Waterwise Plants / Wildlife Species

LANDSCAPE DESIGN & PERMACULTURE ASSISTANCE AVAILABLE
 High experience with local vegetation

By groups welcome - bookings essential - tables & picnic tables in restaurant setting - wheelchair access
 Bird watching - self guided walks - dry weather view
 120+ identified species

Admission to Wetlands*
 \$5.00 - Adults
 \$2.00 - children under 18
 Bookings essential

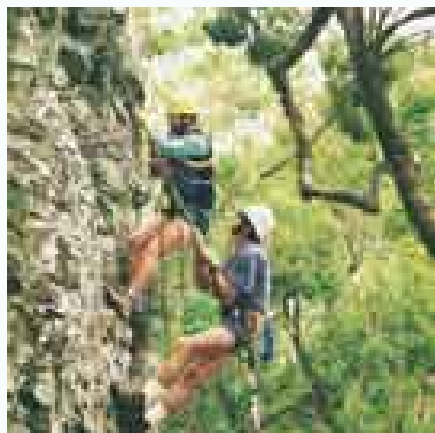
T 07 5463 5887
 F 07 5463 5881
 open 7 days 9am - 5pm
www.wharkuroogma.com.au

DONKEY FARM ESELSBURG

Training, rescuing & rehoming of donkeys.
 Ph: (07) 5463 2643 or 0405 495 797
 Email: heikemackbehle@hotmail.com

HALL OF FRAMES Custom framing, paintings, prints and interesting gift items.
 55 High St, Boonah Q 4310 Ph/Fax: (07) 5463 1366 Email: jsipp@eq.edu.au

SCENIC RIM AVIATION Boonah. Flights from \$50. Open 7 days, bookings essential.
 Ph/Fax: (07) 5463 1933
 Email: scenicrimaviation@bigpond.com



OUTDOORS & MORE
 CAMPING • CLIMBING • CANOEING

HIKING • SWAGS • MAPS
 12 High Street, Boonah (07) 54634114

Stop back in time at
MAYNARDS STORE
 for good old fashioned country charm and service
 We stock: Shoes, Clothing, Patchwork
 Materials, plus much more!
 We look forward to serving you soon!

44 High Street, Boonah Q 4310 Ph/Fax: (07) 5463 1326
 Email: maynards@bigpond.net.au

Antiques on Railway

- Beautiful Antique Furniture
- Charming Collectables
- Quality China & Glassware
- Locally-Made Arts & Crafts

Railway Street, Boonah
 Ph: (07) 5463 1788



Historic Cemeteries

This area was first settled by Europeans in the 1840's. In the early days when people died they were buried on their properties.

The earliest recorded grave is that of Mrs Margaret Coulson who died in 1846 and was buried on her brother's property, "Fassifern".

Another example is the grave of baby Edith McMullen which is situated at Templin just off the main road near the water tower. She died, aged 6 weeks, in August 1886.

From the 1870's cemeteries and churches were built in the area and many of these are worth a visit. Boonah Shire Council has a list of burials in the Shire but some details are missing as there are many lost graves and some cemetery record books are incomplete. Many genealogists have also recorded grave sites and published their records.

The earliest general cemetery near Boonah was the Teviotville Cemetery which opened in 1886 – it was later renamed Coulson Cemetery. The Boonah General Cemetery opened in 1912, Harrisville in 1875, Kalbar in 1921, Maroon in 1895 and Milbong in 1888.

Church Cemeteries are located at:

Aratula	Lutheran	1916 – 1945
Dugandan	Lutheran	1901 –
Hoya	Baptist	1894 - ?
	Lutheran	1883 – 1964
Kalbar	Baptist	1885 – 1919
	Catholic	1888 –
	Lutheran St Mark's	1883 - ?
	Lutheran St John's	1890 –
	Methodist	1898 – 1950
	Salvation Army	1890 – 1901
Milbong	Lutheran	1886 –
Mt Alford	Anglican	1946 – 1981

Boonah Shire Visitor Information Centre has a full list of cemeteries. For further information refer to C. K. Pfeffer "The Fassifern Story" 1991 p. 345, or to genealogical societies, their websites and publications.

National Parks

A landscape of rugged escarpments, hidden passes and spectacular peaks towering over valleys and plains entice the interest of travellers and local residents to the Scenic Rim - a semi-circle of mountains about 110km south west of Brisbane. The seemingly impassable ranges and imposing peaks remain mostly in their natural state. The area has something for everyone: it might be a 10 minute breather from a long drive, a leisurely walk, a challenging hiking experience or a day or two camping in the bush.

There are three main National Parks in the area - Moogerah Peaks National Park; World Heritage-listed Main Range National Park; and Mount Barney National Park. Queensland Parks and Wildlife Service protects and presents these areas to you with pride.

Main Range National Park

Cunningham's Gap lies between the landmark peaks of Mt Cordeaux in the north and Mt Mitchell in the south on the Cunningham Hwy between Boonah and Warwick. The Crest Car Park at the top of the range, where there are toilet facilities, is

the starting point of eight walks. The popular Fassifern Lookout Track (500m) has been improved and provides an opportunity to experience the park's World Heritage values including its magnificent rainforest and spectacular views across the Fassifern Valley. On the south

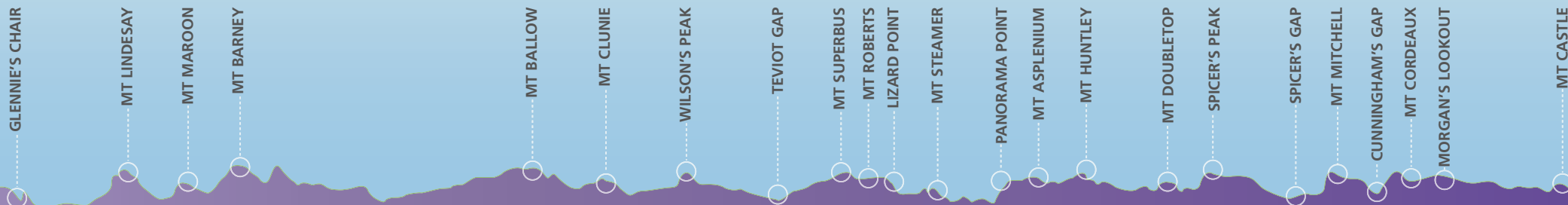
side of the highway is the Mt Mitchell track offering spectacular 360 degree views. A large picnic area is situated a short distance further along the highway with toilet and picnic facilities. Spicer's Gap is accessed by turning south off the highway 5km west of Aratula. The camping area has toilets and picnic tables. Walk or drive on a little to the Pioneer picnic area and graves, Moss's Well or the last carpark close to the Governor's Chair lookout. The 1.6km heritage trail to the west across the range reveals the features of an historic through road built for teams and drays in the early 1860's. Queen Mary Falls has long been a popular day-visit destination for its interesting forest and wildlife. Where Spring Creek flows over a basalt ledge it forms a 40m perennial waterfall. The picnic area has tables, shelter shed, toilets and wood barbecues with firewood. The Cliff Walk (400m) leads to the top of the falls. The Queen Mary Falls Circuit (2km - 40mins) is a leisurely stroll revealing changes in vegetation from the open forest to rainforest.



Moogerah Peaks National Park

Four in a series of craggy volcanic peaks rise above the scenic Fassifern Valley. These are Mt Moon, Mt Greville, Mt Edwards and Mt French. Mt French, a world renowned rock climbing area, is 9km west of the signposted turnoff just south of Boonah. There are two short tracks to lookouts with spectacular views over the Fassifern Valley, both are suitable for strollers with North Cliff track suitable for wheelchairs. There are picnic facilities with toilets and also a camping area. Enjoy the

wildflowers in spring and summer or go birdwatching or spotlighting. Mt Edwards, situated on the northern end of Lake Moogerah, has excellent picnic facilities beside the lake with toilets, shelter sheds and barbecues. Mt Edwards track (6km - 3 hrs) starts by crossing the Moogerah Dam wall then climbing 1.1km up steep steps and along a rough trail to the Gorge Lookout. You have spectacular views over Reynolds Creek and the lake. At the top of Mt Edwards there are 360 degree views over the Fassifern Valley and to the Scenic Rim.





Mount Barney National Park

The park can be accessed off the Boonah-Rathdowney Road or Mt Lindesay Highway. There are various camping grounds within the park and for further information contact QPWS. The climb to Mt Barney summit is for experienced walkers only and takes a minimum of 8 hours. Picnic at Yellow Pinch where there are tables, barbecues, toilets and a QPWS information

display. Cronan Creek track is a pleasant walk along the fire trail, past the base of South Ridge into cool green rainforest. The very popular Lower Portals Track leads from the carpark and passes through open forest with grasstrees and casuarinas. It has moderate to steep gradients and leads to the Lower Portals, a beautiful pool along a gorge on Mt Barney Creek. The Upper Portals Track leads from the

Cleared Ridge carpark which is accessed from Burnett Creek Rd at Maroon. It leads to the Upper Portals on Mt Barney Creek and has some steep gradients.

For further information please refer to QPWS walking track guides or relevant bushwalking books. This information has been supplied with the kind permission of Queensland and Wildlife Service.

a way of seeing... a way of doing things...



a way of life!

The loops and trails of the **rainforest way** touring route let you explore the spectacular World Heritage **rainforests** of the NSW Northern Rivers and South East Queensland at your own pace.

The Rainforest Way makes it easy to access these hidden wonders from the **Mount Lindesay, Bruxner and Pacific Highways** and the **Summerland Way**

Take a day trip along part of the route and enjoy leisurely **bushwalks**, a picnic by a waterfall or lunch in a **rainforest café**. Or take your time, get off the beaten track staying in friendly **B&Bs** and cottages, luxurious **rainforest retreats** or **camping** out under the stars.



rainforest way
 1300 661 594
 07 8443 2303
 02 8662 2646
 1300 309 440
 02 6632 2700
 1300 299 718
 maroon@nsw.gov.au

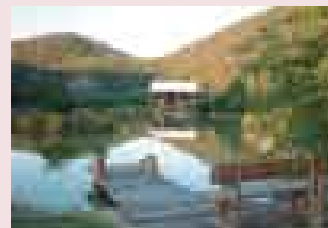


For information and maps, call into one of the **Way** Information Centres along the way or visit

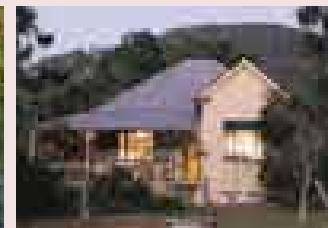
rainforestway.com.au

Discover Mt Barney

SURROUNDED by the majestic and widely recognisable mountains of the McPherson Ranges is an unspoilt and undiscovered area that begs to be explored. To really absorb the quiet serenity, sweeping views and activities on offer, you really do need to put aside a couple of days or more, to encapsulate the vast region of the World Heritage-listed Mount Barney National Park.



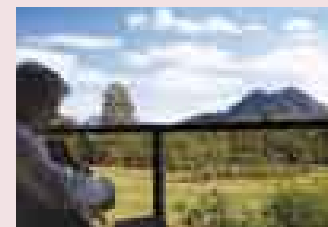
Barney Creek Vineyard Cottages
www.barneycreekcottages.com
info@barneycreekcottages.com
 Ph/fax: 07 5544 3285



Mt Barney Lodge Country Retreat
www.mtbarneylodge.com.au
mtbarneylodge@bigpond.com
 Ph/fax: 07 5544 3233



Lillydale Hostfarm
www.lillydale.com.au
lillydalehostfarm@bigpond.com.au
 Ph/fax: 07 5544 3131



Tuckeroo Cottages & Gardens
www.tuckeroocottages.com.au
barneys_backyard@bigpond.com
 Ph: 07 5463 6263



Thistledown Cottage
www.thistledowncottage.net.au
info@thistledowncottage.net.au
 Ph/Fax: 07 5544 3232



There are a number of walks in the Mt Barney National Park to explore, both tracked and untracked for all ability levels. In winter, the peaks and ridges of the craggy mountains beckon, while in summer the shaded cool of the freshwater creeks and welcoming swimming holes is as far as you should need to venture.

You can choose to stay at a number of venues, each with inspiring mountain views and equally inspiring and unique services on offer.

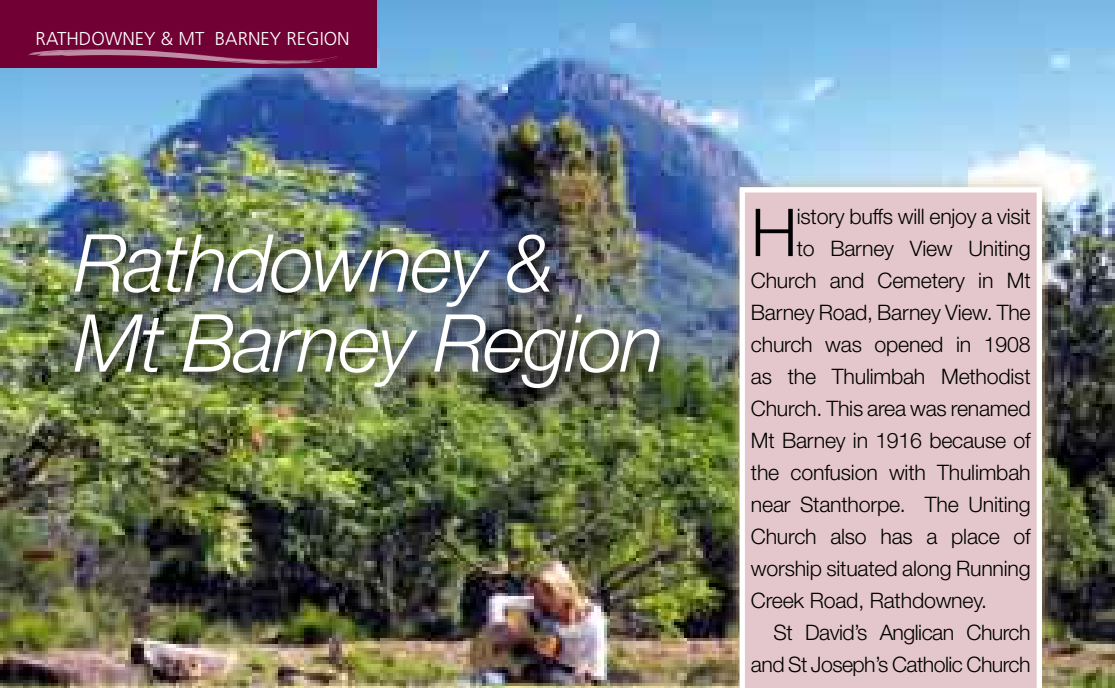
- Stay in a lakeside bungalow surrounded by productive vineyards and sample the wine selection at the source.
- Be challenged by adventure activities at an eco certified lodge. You can choose to camp or stay in a cabin or Queenslander homestead. Larger groups,

weddings and functions are a speciality.

- Stay on a AAA 4½ star rated working cattle farm with 4th and 5th generation farmers and participate in some of the farm activities.
- A Scottish-themed cottage with its "old world charm" may be more to your liking.
- Experience a tranquil and uncrowded destination staying in cottages especially designed for couples. Enjoy leisurely walks along private bush tracks.
- Be tempted by silver service dinners, home-style meals and country cuisine, DIY wood-fired pizzas or camp oven cooking.

With so much available there is every reason to come and *Discover Mt Barney*.

Rathdownney & Mt Barney Region



History buffs will enjoy a visit to Barney View Uniting Church and Cemetery in Mt Barney Road, Barney View. The church was opened in 1908 as the Thulimbah Methodist Church. This area was renamed Mt Barney in 1916 because of the confusion with Thulimbah near Stanthorpe. The Uniting Church also has a place of worship situated along Running Creek Road, Rathdownney.

St David's Anglican Church and St Joseph's Catholic Church is situated on Mt Lindesay Highway, Rathdownney. Both places of worship were opened in 1929. St James Catholic Church and Cemetery is situated at Palen Creek.

A Lutheran church monument remains in Abode Park which was named after Pastor Armin Bode. The church was built in 1910 and closed in 1966.

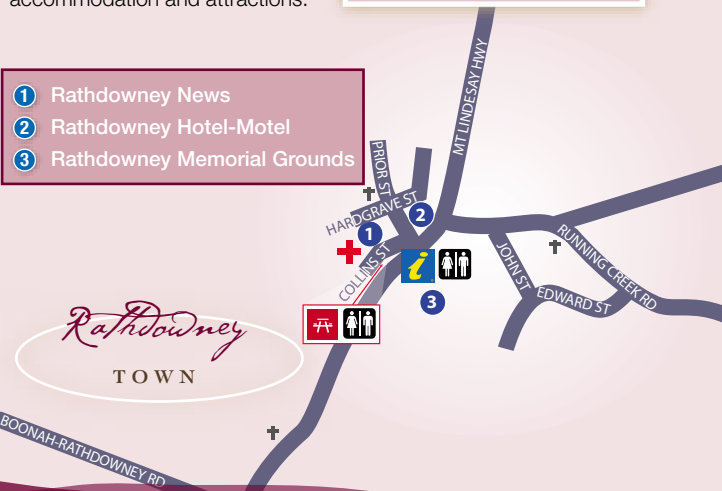
dairy and pioneering heritage of the Rathdownney region.

Stop at the Rathdownney Visitor Information Centre to uncover a wealth of historical information about the region, or find out about bushwalking trails into the mountains. The friendly staff can also help you find local accommodation and attractions.

Set at the base of the Scenic Rim, surrounded by magnificent peaks and rugged mountains, Rathdownney is a spectacular gateway to World-Heritage-listed Mt Barney National Park, the Lions Road tourist drive, wilderness adventures, camping, bushwalking and bird-watching.

Rathdownney was first explored by Captain Patrick Logan in 1828 and opened for settlement in 1842. Rich in history, the once thriving dairy and timber milling town of Rathdownney grew with the arrival of the tramway in 1911 to cart timber and cream.

In April, Rathdownney hosts the Annual Heritage Festival which draws thousands of visitors to this charming country town. The Rathdownney Heritage Festival is a celebration of timber,



Rathdownney Hotel-Motel



Mt Lindesay Hwy, Rathdownney Q 4287
Bookings & enquiries, phone (07) 5544 1121

Queensland's first and last hotel on the Mount Lindesay Highway

Great Country Cooked Meals

Lunch 12 noon - 2pm 7 days
Dinner 6pm - 8pm except Sundays

Comfortable Modern Accommodation

Public Bar
Lounge Bar
Beer Garden

Rathdownney Town

With a population of around 350 the township boasts a police station, Voluntary Fire Brigade and Voluntary Ambulance Service.

Many caravan clubs make regular visits to the Rathdownney & District Memorial Grounds. The grounds were established in the late 1940's as a memorial to those who lost their lives in the World Wars. The Rathdownney Hotel, originally built by the Stretton family in 1911, is a popular meeting place for locals and visitors alike. Call in, have a meal and find out about their Social Fishing Club. The Rathdownney Newsagency keeps you in touch with the outside world, serves take-away foods and has a good range of supplies in store.



Rathdownney Heritage Festival
Sunday April 1, 2007
www.rathdownney.org.au 5544 1222



Rathdownney Information Centre and Historical Museum
Mt Lindesay Highway Rathdownney
www.rathdownney.org.au 5544 1222

Explore the Scenic Rim from Boonah Park - there's something for everyone!

BOONAH PARK

BIGRIGGEN PARK

For more information visit us at www.bigriggenpark.com.au

FLANAGAN RESERVE
RIVER COUNTRY

Look out Gazing - Fishing - Swimming
Rock Pools - On-site management
Dog-friendly - Modern amenities - Wheel-
Easy access for vans and motorhomes

At the foot of Mt Marion
and Mt Barney National Park
Ph: 07 5544 3126 www.flanaganreserve.com.au

RATHDOWNNEY NEWS

CONVENIENCE & TAKEAWAY

YOUR ONE STOP SHOP
IN THE HEART OF THE SCENIC RIM

GROCERY
NEWSPAPERS
MAGAZINES
TAKEAWAY
COLD DRINKS
TEA/COFFEE
ICE
BAIT & TACKLE

Ph: 5544 1142

Rathdownney
MEMORIAL GROUNDS

Crested Hares and wallabies are happy to enjoy the beautiful, unspoiled country atmosphere of our grounds and only a short drive to Boonah, Burnt Oak, Urumbidgee Centre and Boonah Post Office.

PHONE 07 5544 3174
FOR MORE INFORMATION



The Falls Drive

Commencing on Boonah-Rathdownney Road, 15km from Boonah, this drive is well signposted and easy to follow. Although it is fully sealed there are some narrow, steep sections so it is designated unsuitable for buses, trucks and caravans.

The first section takes you past mainly dairy farms with a backdrop of mountains. As the road starts to wind up to the top of the range you will come to Teviot Falls Lookout. It is well worth stopping for the spectacular view back towards Boonah. Interestingly one of Australia's longest river systems has its origins in these mountains.

The Condamine River starts in the area known as The Head before winding its way through western Queensland, into the Murray-Darling River and finally reaching the sea at Goolwa in South Australia.

Take a breather at Carr's Lookout to enjoy the spectacular mountain view and look at the plaque naming all the mountains. The drive continues through

rainforest to Queen Mary Falls National Park. Dags and Browns Falls can be visited on the way to Killarney.

There are many alternative ways home. You can follow the road into Killarney then proceed either to Warwick or via Yangan onto the Cunningham Highway. For 4WD enthusiasts there is the drive up Condamine Gorge, then onto White Swamp Road and back via Burnett Creek. You can take the road which skirts Woodenbong, passing through rainforest and joining the Mt Lindesay Highway to either Kyogle or Rathdowney. Whichever route you choose, an enjoyable day out is assured.

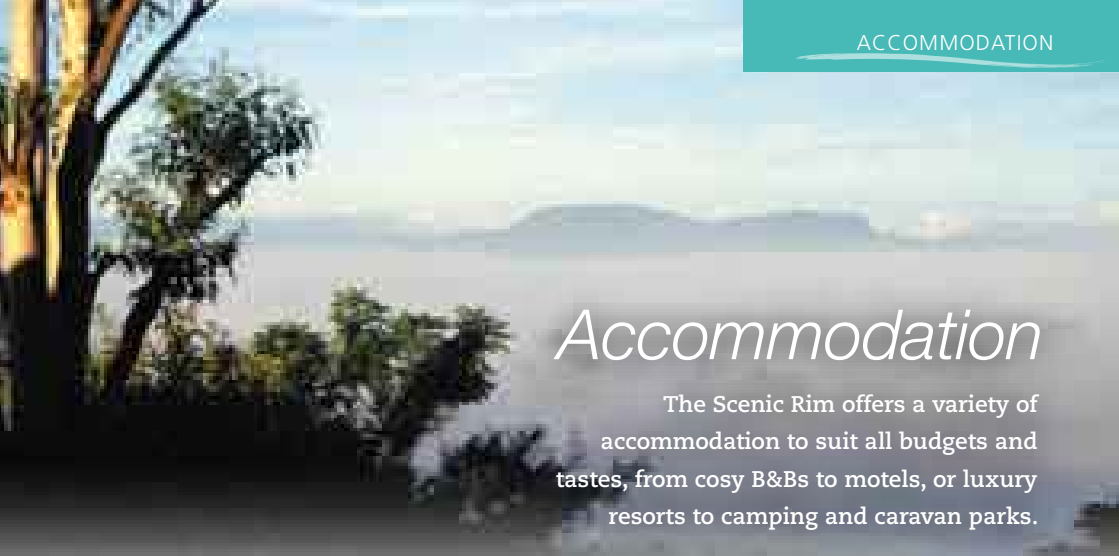
The Head and Queen Mary Falls

Whether you are looking for a day trip or want to spend a few days relaxing you will really enjoy this region.

Queen Mary Falls National Park is a popular destination with excellent picnic facilities or perhaps you would prefer to eat at one of the local cafés which

are open for breakfast, lunch or dinner depending on the day. The King Parrots and Crimson Rosellas can be fed at the kiosk and you are sure to see many different birds and native animals if you look carefully. Don't forget to bring your camera and binoculars. For the 4WD enthusiasts why not explore the Condamine Gorge with its 14 river crossings.

This is an ideal base from which to explore the area and its national parks with birdwatching, bushwalking and scenic country drives. Why not come and stay for a few days, escape from the busy world and relax and rejuvenate yourself? There is a wide range of accommodation from camping to bed & breakfasts and self contained cottages.



Accommodation

The Scenic Rim offers a variety of accommodation to suit all budgets and tastes, from cosy B&Bs to motels, or luxury resorts to camping and caravan parks.

Queen Mary Falls Caravan Park
 Your nearest falls in comfort!
 immediate retreat:

- Bird feeding daily
- Book open 7 days
- Saturday night dining
- Luxury spa cabin
- Luxury family cabins
- Basic bush cabins
- Powered sites • Tent sites
- Splaynets • Bushwalking
- Aerial swing
- Coffee machine

Queen Mary Falls, Inglewood Q 4373
 Ph: (07) 4664 7131 Fax: (07) 4664 7132
 Email: queenmaryfalls@queenmaryfalls.com.au
www.queenmaryfalls.com.au

OAKLEA B&B & COTTAGES

A 4th generation working farm in the Scenic Rim mountains. Enjoy the birds, bushwalks, cook clean air and stargazing. Cottage or homestead accommodation - old fashioned Country Hospitality 2 hours from Brisbane and Gold Coast.
AWT ★★☆☆

Ph: (07) 4664 7161 Fax: (07) 4664 7163
 Email: oaklea@oaklea.com.au
www.oaklea.com.au/oaklea
 1966 Condamine River Rd. The Head QLD 4373

BOONAH MOTEL ★★★☆

'GETAWAY RETREAT'
 Situated next to Bicentennial Park at the roundabout, the Boonah Motel offers air conditioned and heated units with TV, Video/DVD players, microwave, pool and barbecue facilities, all within walking distance of the town centre and the showground.

1 Mount Carmel Road, Boonah Qld 4310
 Phone (07) 5463 1944 Fax (07) 5463 4332
 Email boonahmotel@bigpond.com Web www.boonahmotel.com

Spring Creek Mountain CAFE & COTTAGES

Scenic Rim view of the lake (unobscured) from 6-8pm daily food and drinks, weekends from 10am-10pm. Full 500m² covered cottage or caravans. 2000m² landscaped lawn and BBQ area. My house, wood and decking, full and kitchen, indoor pool and spa, bar, view and accommodation. 2 hrs. unobscured lake view, 2000m² landscaped lawn, 2 bedrooms, full bath, kitchen and 2 car spaces for private guests. This is the Great Way. Call 1300 466 466. Spring Creek Cottages & Cafe
 Condamine, Queensland

Tel: (07) 4664 7111 Fax: (07) 4664 7121
 Email: springcreek@springcreekcottages.com.au
www.springcreekcottages.com.au
 1100 Spring Creek Road, Inglewood Q 4373

Bilyana Cottages

Self-contained cottages with a touch of history. A magical bush setting with spectacular views - mountains by day, stars by night. A short drive to Lake Haroon & Arnie's Film. AAA ★★☆☆

Your hosts: Dawn & Bill Miller

BOONAH BATHDOWNNEY RD, BOONAH Q 4310
 Ph/Fax 07 5463 6249
www.bilyanacottages.com



COFFEE | COCKTAILS | LUNCH | DINNER

Dine in casual elegance and savour our sweeping valley views.

VUE RESTAURANT

Open from 10am Wednesday to Sunday
Coffee and Cakes, A La Carté and Light Lunches, Fireside Dinners

PHONE (07) 5463 4738

3908 Boonah-Ipswich Rd, Boonah Q 4310 Email: info@boonahvalleymotel.com.au

www.boonahvalleymotel.com.au

THE BOONAH VALLEY MOTEL



Ipswich-Boonah Road, Boonah

Ph (07) 5463 4738

info@boonahvalleymotel.com.au www.boonahvalleymotel.com.au

- 1st class accommodation and restaurant
- individually designed rooms with views, space and privacy
 - honeymoon suite
- class artwork in rooms and restaurant
- modern design restaurant suitable for 1 to 100 - perfect function venue
 - fully stocked wine bar
- situated on acreage on edge of Boonah

★★★★

FREE COFFEE • DINNER • LUNCH



THE ULTIMATE ESCAPE

BOONAH VALLEY'S PREMIER HONEYMOON RETREAT

These three luxury fire view cottages and private cottages are the perfect honeymoon escape. Fully equipped and indulgent in privacy, we feature an idyllic restaurant. Located in a rural bush setting, the cottages are private, peaceful and secluded. Easy road access, air conditioning, spa, elegant decor, full gourmet fare, indulgent pool and superior service ensure a romantic atmosphere for you to enjoy the intimate company of your loved ones. All meals are served for lunch or a romantic dinner, wine and champagne are served in the privacy of your cottage. A great selection of local wines are also available. Take in the beauty of the National Parks in the heart of the Scenic Rim.

200 GIFFEN STAN D TIMES
IPSWICH & GULLY TOURISM
AWARDS WINNER

Member of the Scenic Rim Regional Council



Bookings at Boonah
Ipswich & Gully

Call (07) 5463 4738

www.scenicrimcottages.com.au

3908 BOONAH-IPSWICH ROAD, BOONAH, QLD 4310 • AUSTRALIA

The Cottage at Lavender Hill Farm



Escape warm country hospitality to our modern self contained country cottage. Beautiful, secluded setting on 40 acres. Easy wood fire. Close to wineries, lavender farms, lakes and mountains. Children welcome. Pet friendly.

BACQ ♦♦♦♦ Ph: (07) 5463 0004
Email: bookings@lavenderhillfarm.com.au
www.lavenderhillfarm.com.au

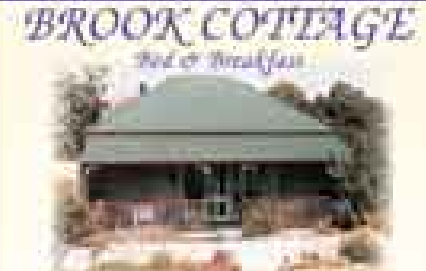
A PERFECT COUNTRY EXPERIENCE JUST FOR TWO

VANBERY COTTAGE

Hide away in a superbly decorated, 100-year old cottage on a secluded estate. It is surrounded by spectacular views, manicured walks and complete serenity. Fully self-contained and air-conditioned, the cottage offers modern comfort with a touch of luxury. Bedcover, hair price and privacy.

Contact David Hall: 583 Easthaze Road
(Corner of Bussell & 111), Phone: (07) 54610514
4/919 117 117 www.vanberycottage.com.au

BROOK COTTAGE
Bed & Breakfast



- Self-Contained Rooms
- Full air conditioning
- Kitchen
- Wine &
- Easy wood fire
- 5 Queen's Double
- TV DVD/CD
- Walk to shops, schools, bus stop
- Breakfast lounge included
- Internet access
- Not suitable for children

4 Brook Street, Bussell T 07 5466 1700
4 0822 506 507 www.brookcottagebussell.com.au

MIRABEL COTTAGES



- 1 hour from Brisbane – self contained cottage accommodation on a working farm
- Close to lakes and mountains of the Scenic Rim
- Catering for romantic weekends, family getaways and special occasions

177 Redford Road, Harroville Q 4207
Ph/Fax (07) 5467 1238 www.mirabelcottage.com.au


Wiss House

HERITAGE BED & BREAKFAST
LUXURY COUNTRY HOMES



Located in a peaceful picturesque valley, featuring a high level of contemporary comfort with many of the original features, the Wiss House and grounds have been lovingly maintained. The four guest bedrooms are fully air-conditioned and furnished to elegant and luxury bedding. Every attention is paid to the smallest detail including the extensive views. Take a dip in the poolside or relax in the mature gardens. Dinner is served prepared by our Chef/Host. Be prepared with an afternoon nap, or take a hike through the picturesque valley amongst country trees. TV, DVD, Stereo and all guest parking is provided.


THE OUTLOOK



Heart of the Fassifern Valley
Our conference facility and country retreat can offer you:

- Comfortable Accommodation • Modern Conference Facilities
- Information Technology Training Facility
- Friendly Attentive and Qualified Staff • Time to Reflect
- Views of the Scenic Rim • Adventure Activities
- Group and Coach Bookings

Ph: Roxanne Sly at The Outlook, Boonah (07) 5463 1900
Fax: (07) 5463 1185



Stark House

HERITAGE BED & BREAKFAST



103 KALBAR CONNECTION ROAD, KALBAR QLD 4307
TELEPHONE (07) 5463 1185 www.starkhouse.com.au

- Four Luxury Bedrooms
- Air-Conditioned
- Full Bathing Amenities
- Easy Wood Fire
- Claw Foot Baths
- Open Verandah
- DVD/CD/TV/Aircon
- Internet Available

Enjoy the elegance and charm of this gracious late Victorian Queenslander. The magnificent views, the relaxed atmosphere and our attention to detail offers the perfect setting for your special occasion. Experience the grandeur of one of Bunnah Shire's most stately homes.

Spoil yourself.

In one of the most unspoilt places in Australia.



Surrounded by spectacular Mt Seng National Park, the Peppers Spicers Peak Lodge is one of Australia's newest.

Many gourmet, heated spa, vineyard & a half hour from Brisbane. Enjoy luxurious accommodation, delicious food and wine and a level of service to match the city locations.



Every one's unique

A MEMBER OF HILL MANAGEMENT

With only 13 bedrooms, it's the perfect place for those with a passion for food and wine who want to truly escape them all. The lodge is open to outdoor dining for those wishing to enjoy a long leisurely lunch. Bookings essential. Call 07-5466 1665 or visit www.peppers.com.au

www.peppers.com.au

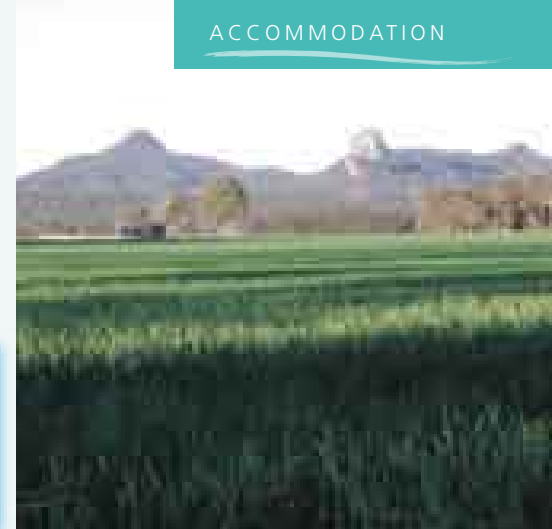
Spicers Peak Lodge, Brisbane QLD 4101
 Peppers.com.au/spicerspeak

COMMERCIAL HOTEL Outside Back Cover

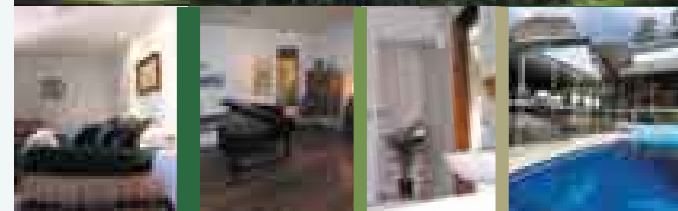
LAKE MAROON HOLIDAY PARK: Ideal getaway for family or group bookings. **535 Burnett Creek Rd, Maroon Q 4310** Ph/Fax: (07) 5463 6256 Email: lake.maroon@optusnet.com.au

LAKE MOGERAH CARAVAN PARK Page 40

For all the latest information, visit www.boonahatourism.org.au



real seclusion
really close by



In the heart of the Scenic Rim

Phone (07) 5463 5600

2225 Lake Moogerah Road
Moogerah Q 4309

www.zengarra.com

what's on

Visit our website to preview regular events and activities open to non-residents.

Understated luxury bounded by almost deserted country creates an atmosphere of tranquillity. Set in 75 acres amongst dramatic mountain landscapes, relish your privacy or enjoy the nearby country wineries, restaurants and adventure destinations. Offering bed and breakfast style accommodation for a perfect weekend escape, Zengarra can also cater for your next function or an intimate romantic wedding.

- music pavilion with superb grand piano
- fresh homemade food
- beautifully appointed separate suites with private bathrooms
- bushwalking on property or neighboring National Park
- large solar heated swimming pool

Fishing at Lake Maroon & Lake Moogerah

The species which are available in these dams are Golden Perch, Australian Bass, Silver Perch, Mary River cod, cat fish and eels.

Lake Maroon, situated about 20 minutes south of Boonah, is a relatively small dam which can be fished from the bank or by boat depending on the water levels and weed growth. Maroon is renowned for its Bass sportfishing fishing with catches in excess of 50 fish caught and released in a day.

Lake Moogerah is about the same distance to the west of Boonah. In its heyday it was widely written about for its trophy size Bass, Golden Perch and Mary River cod. This dam is easily fished from a boat or the shore while the water levels are low and still produces trophy fish of all species.

Recommended baits for these lakes are worms, live shrimps, crayfish, grubs or meat. As far as lures go, Jackall lures (TN60) will catch you most species in both dams. Spinnerbaits, soft plastics, surface lures and bibbed minnows all work at times.

Written by local resident, Harry Watson. Catch him on Channel 10's Australian Fishing Championships

The Boonah Shire has two great fishing impoundments for local and tourists to explore and fish.



BP Boonah
OPEN 7 DAYS

Full
Drinks, Ice, Cigs, Sweets, Milk,
Lures, Live Worms, Fishing Permits,
Tackle Plus
EFTPOS facilities
Friendly country service
Ph (07) 5463 1566
43 Walter Street, Boonah

LAKE MOOGERAH
CURRYAN PARK

- Powered & Unpowered Sites
- Cabin Accommodation
- Campfires Permitted
- 2 Boat Ramps
- Fishing, Waterskiing, Sailing, Canoeing
- Close to National Parks & Bushwalking

Twenty trails all year round. Come and enjoy the best of the Scenic Rim - your next holiday destination!

Muller Park Road, Moogerah Queensland 4309
Ph 07 5463 0141 Fax 5463 0197
robymason1@bigpond.com www.moogerah.com

Pamper Yourself

While you're on holiday give yourself a treat and rejuvenate your mind and body. The Scenic Rim is the ideal place to relax and refresh.

HAIR SHINE HAIR FASHIONS: Ladies' & men's. Mon to Fri 8.30am-5pm, Sat 8.30am-12 noon. After hours by appointment. **16a High St, Boonah Q 4310 Ph/Fax: (07) 5463 1917**

OCHRE ESSENCE OF EARTH Natural skin care, make-up, gifts. Thurs & Fri 10am - 4.30pm, Sat 9am - 2pm. Sun by appt. **Shop 3/62 High St, Boonah Q 4310 Mobile: 0433 808 240**

The Lilac Room
Skincare • Beauty • Nails

Internationally Qualified Beauty Therapist and Nail Technician

Phone Jenny on 07 5463 7172
Mobile 0427 749 631
Shop 1/167 George St Kalbar Q61 4309

The ultimate treatments for both face & body...
Experience the difference

MRS P'S PLACE

Experience the real "Country Culture" all under the one roof!

- Hair and Body Care
- Muscle Therapy
- Natural Products
- Jewellery and Giftware

Great your rootesses. Lounge and life. We look forward to welcoming you.

30 Queen St, Harrisville Q 4307
Ph: (07) 5467 3999 or 5467 1385

CARING MASSAGE

- * Living Essential Oils
- * Align Joints and Spine
- * Correct Muscles and Tendons
- * Balance Emotions/Stress
- * Come Alive - Call Les

07 5463 7050
mob: 0408 499 240
89 George Street KALBAR

Fassifern Hair, Beauty and Massage
PHONE: (07) 5463 7677

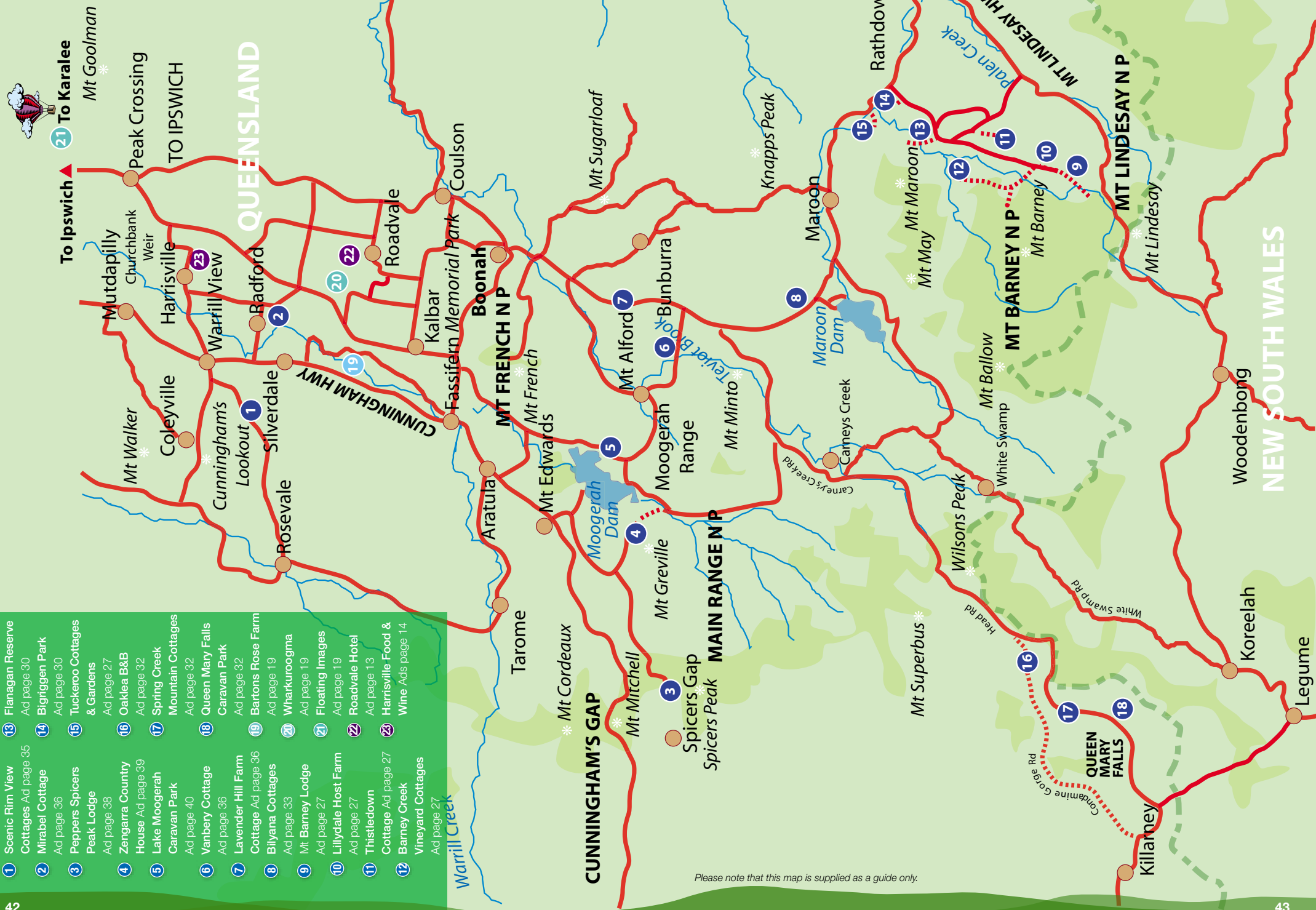
- Hairdressing
- Colouring
- Permanent Hair Colour
- Waxing
- Makeup for all occasions
- Special treatment hands & feet
- Eyebrow and eyelash tinting

Remedial Massage Therapist

- Deep tissue
- Reflexology
- Sports
- Swedish
- Acupuncture
- Facial and body treatments

188 Edwards St, Kalbar 4309
Monday - Friday 8.30am - 5.30pm - Saturday 9.00am - 1.00pm
Remedial massage Monday - Friday after hours by appointment

- 1 Scenic Rim View Cottages Ad page 35
- 2 Mirabel Cottage Ad page 36
- 3 Peppers Spicers Peak Lodge Ad page 38
- 4 Zengarra Country House Ad page 39
- 5 Lake Moogerah Caravan Park Ad page 40
- 6 Vanbery Cottage Ad page 36
- 7 Lavender Hill Farm Cottage Ad page 36
- 8 Bilyana Cottages Ad page 33
- 9 Mt Barney Lodge Ad page 27
- 10 Lillydale Host Farm Ad page 27
- 11 Thistledown Cottage Ad page 27
- 12 Barney Creek Vineyard Cottages Ad page 27
- 13 Flanagan Reserve Ad page 30
- 14 Bigtuggen Park Ad page 30
- 15 Tuckeroo Cottages & Gardens Ad page 27
- 16 Oaklea B&B Ad page 32
- 17 Spring Creek Mountain Cottages Ad page 32
- 18 Queen Mary Falls Caravan Park Ad page 32
- 19 Bartons Rose Farm Ad page 19
- 20 Wharkuroogma Ad page 19
- 21 Floating Images Ad page 19
- 22 Roadvale Hotel Ad page 13
- 23 Harristville Food & Wine Ad page 14



Please note that this map is supplied as a guide only.

COMMERCIAL

07 5463 1024

HOTEL BOONAH



ACCOMMODATION | LOG FIRE | BOTTLE SHOP | GAMING
RESTAURANT | TAB | ARTWORKS

RESTAURANT

ZEST

07 5463 8930

39 HIGH STREET

BOONAH QLD 4310

amophie@bigpond.com