

WEST WALLSEND UNDERGROUND

GLENCORE

FAST FACTS

Ownership

West Wallsend Underground and the Macquarie Coal Preparation Plant are operated by Oceanic Coal Australia Limited (OCAL) on behalf of Macquarie Coal Joint Venture. OCAL is the majority shareholder in the Macquarie Coal Joint Venture with 70% ownership. Other shareholders include Marubeni Coal Pty Ltd (17%), OCAL Macquarie Pty Ltd (10%) and JFE Minerals (Australia) Pty Ltd (3%). OCAL, which also owns OCAL Macquarie Pty Ltd, is wholly owned by Glencore Coal (Australia) Pty Limited.

Location



West Wallsend Underground is an underground coal mining operation located in the Newcastle Coalfields, near Lake Macquarie. Our pit top is located approximately 1km east of Killingworth and approximately 1.25km south-west of Barnsley, in the north-western area of Lake Macquarie City Council.

Our Employees

221
STAFF



Our History





Environmental Management

The West Wallsend Underground Environmental Management System aims to:

- implement responsible environmental management;
- engage with the community in which we operate;
- undertake proactive and strategic sustainable development and environmental and community management planning and control;
- meet ongoing compliance with legal obligations;
- facilitate continuous improvement; and
- meet internal Glencore standards.

Annual Production for West Wallsend

2015 SALEABLE COAL

1.5 million tonnes

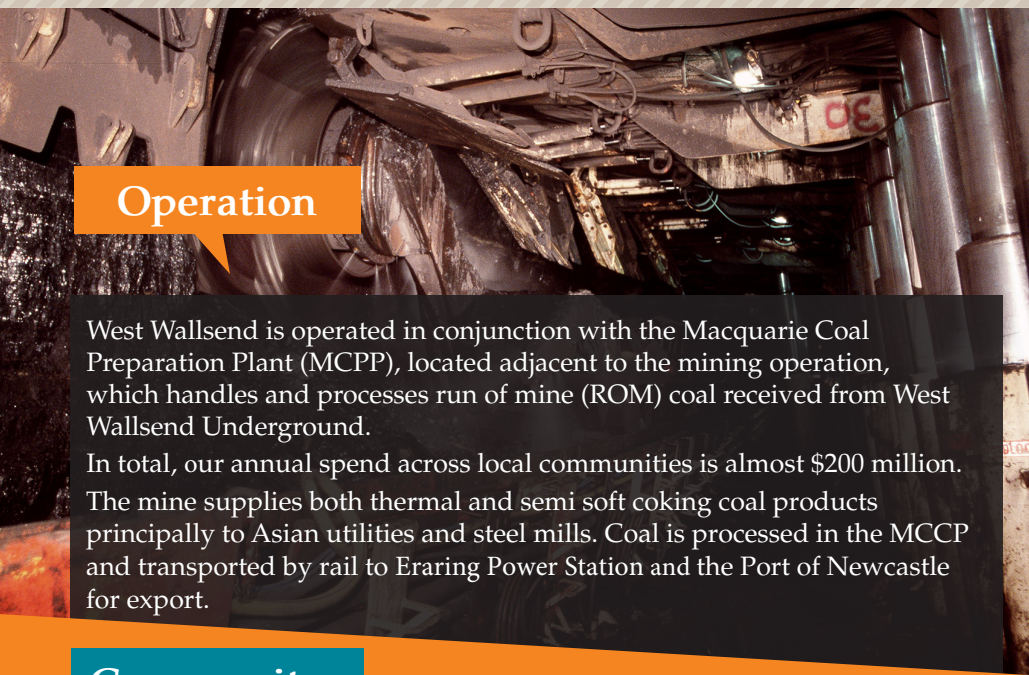
WEST WALLSEND
~ **ACHIEVEMENTS** ~

NSW Mineral Council Annual Innovation Awards:

- Finalist 2006 (x2)
- Finalist 2009
- Finalist 2010 – People’s Choice Award

Coal Services Coal Industry First Aid Competition:

- Winner 2015

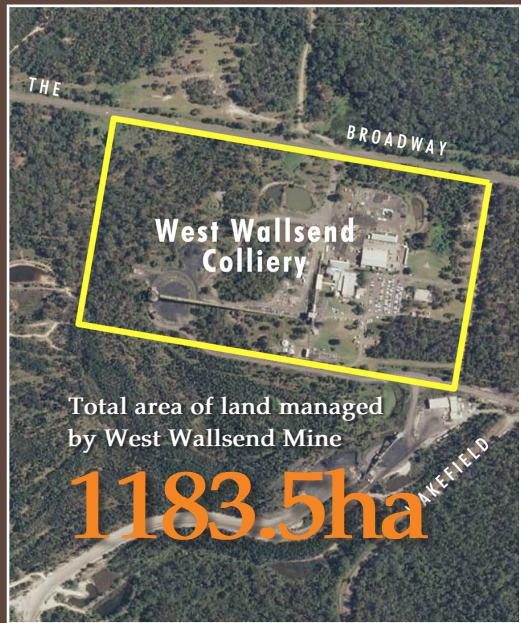


Operation

West Wallsend is operated in conjunction with the Macquarie Coal Preparation Plant (MCCPP), located adjacent to the mining operation, which handles and processes run of mine (ROM) coal received from West Wallsend Underground.

In total, our annual spend across local communities is almost \$200 million.

The mine supplies both thermal and semi soft coking coal products principally to Asian utilities and steel mills. Coal is processed in the MCCPP and transported by rail to Eraring Power Station and the Port of Newcastle for export.



Community

West Wallsend Underground aims to identify projects and partnerships that directly benefit the local community.

Where possible these support programs are designed to allow the value of the program to continue to be sustainable after our operations have ceased. This includes but is not limited to support for local schools, community groups and research programs (LMCC).

