



Poultry Slaughter

Released March 1, 2002, by the National Agricultural Statistics Service (NASS), Agricultural Statistics Board, U.S. Department of Agriculture. For information on "Poultry Slaughter" call John Lange at 202-720-0585, office hours 7:00 a.m. to 4:30 p.m. ET.

Ready-to-Cook Weight Up 5 Percent

Poultry certified wholesome during January 2002 (ready-to-cook weight) totaled 3.31 billion pounds, up 5 percent from the amount certified in January 2001. Updated totals for December 2001 show that 2.93 billion pounds were certified.

The preliminary total live weight of poultry inspected during January 2002 was 4.45 billion pounds, up 5 percent from a year ago. Young chickens inspected totaled 3.75 billion pounds, up 5 percent from January 2001, and mature chickens totaled 79.8 million pounds, up 11 percent. Turkey inspections totaled 611 million pounds, up 5 percent, while ducks totaled 14.1 million pounds, a 9 percent decrease.

Young chickens slaughtered during January 2002 averaged 5.12 pounds per bird, up 2 percent from January 2001. The average live weight of mature chickens was 5.06 pounds per bird, down 2 percent from a year ago. Turkeys slaughtered during January 2002 averaged 28.2 pounds per bird, up 4 percent from January 2001.

Ante-mortem condemnations during January 2002 totaled 19.2 million pounds. Condemnations were 0.43 percent of the live weight inspected, compared with 0.47 percent a year earlier. Post-mortem condemnations, at 53.3 million pounds (N.Y. dressed weight), were 1.33 percent of quantities inspected, compared with 1.67 percent a year earlier.

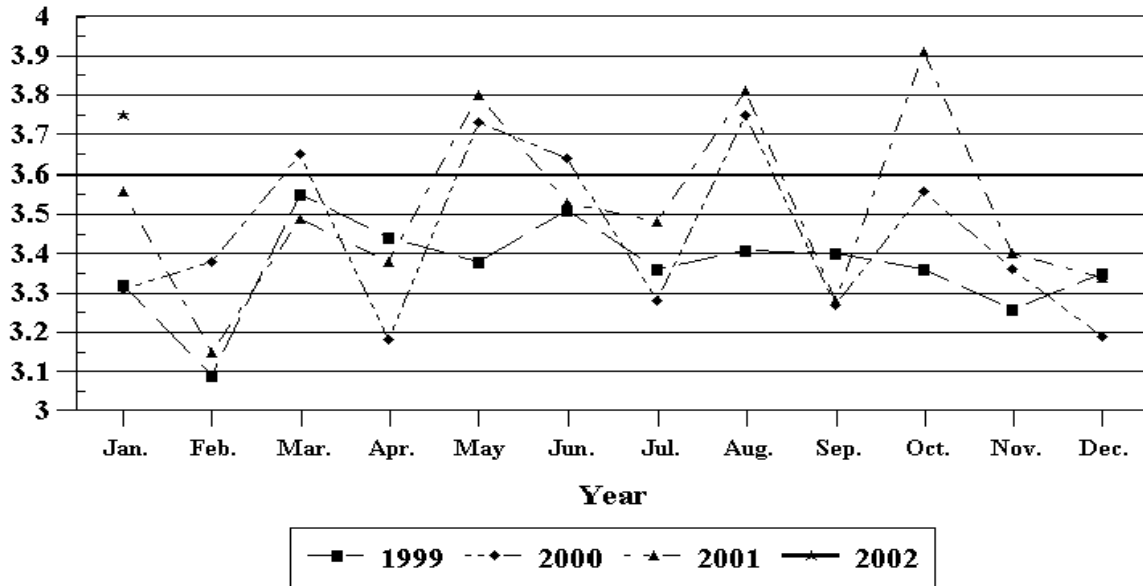
January 2002 contained 23 weekdays (including two holidays) and four Saturdays, the same as January 2001.

Contents

	Page
Poultry Slaughter: Number, Live Weight, and Average Live Weight by Type, United States, January 2002	4
Poultry Slaughter: Chilled and Frozen, Pounds Certified by Type, United States, January 2002	6
Poultry Slaughter: Ante-Mortem Condemnations by Type, United States, January 2002	8
Poultry Slaughter: Post-Mortem Condemnations by Type, United States, January 2002	9
Young Chickens Slaughtered: Number, Live Weight, and Average Live Weight, by State and United States, January 2002	10
Young Chickens Slaughtered: Pounds Certified and Post-Mortem Condemnations, by State and United States, January 2002	11
Young Chickens Slaughtered: Number Condemned Post-Mortem by Cause, by Type, by State and United States, January 2002	12
Young Turkeys (Mature) Slaughtered: Number, Live Weight, and Average Live Weight, by State and United States, January 2002	14
Young Turkeys (Mature) Slaughtered: Pounds Certified and Post-Mortem Condemnations, by State and United States, January 2002	14
Young Turkeys Slaughtered: Number Condemned Post-Mortem by Cause, by Type, by State and United States, January 2002	15
Reliability Statement	16
Definitions	17

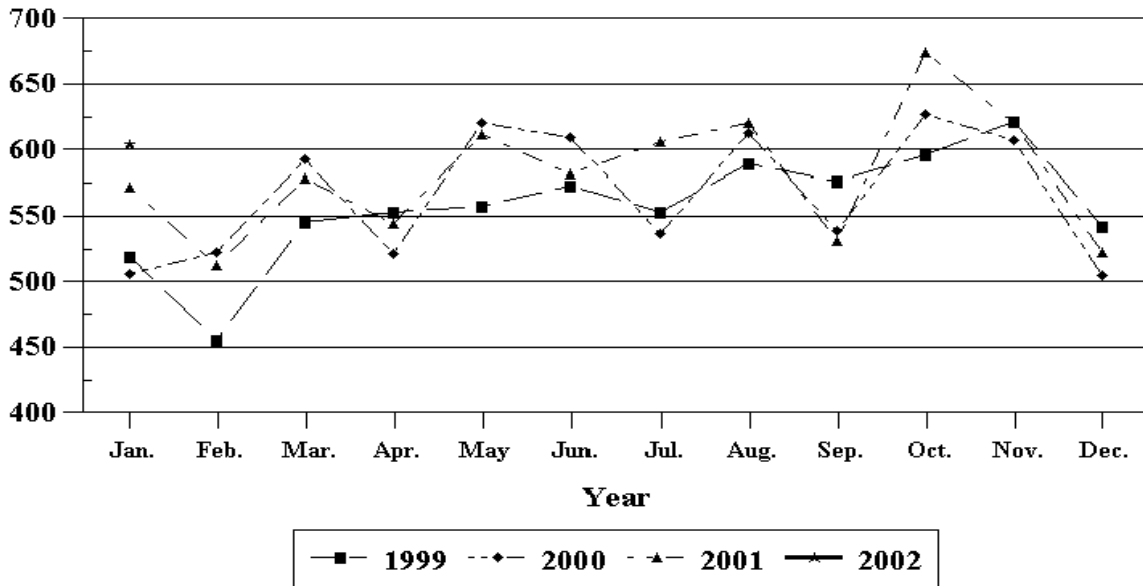
Young Chickens: Live Weight Slaughtered, by Month, 1999-2002

Billion Pounds



Young Turkeys: Live Weight Slaughtered, by Month, 1999-2002

Million Pounds



**Poultry Slaughter: Number, Live Weight, and Average Live Weight by Type,
United States, January 2002¹**

Commodity	Jan 2001	Dec 2001	Jan 2002	Percent of	
				Jan 2001	Dec 2001
	<i>1,000 Head</i>	<i>1,000 Head</i>	<i>1,000 Head</i>	<i>Percent</i>	<i>Percent</i>
Number Slaughtered					
Chickens					
Young	710,683	650,725	732,372	103	113
Mature	13,999	13,060	15,762	113	121
Light	8,379	7,791	9,810	117	126
Heavy	5,620	5,269	5,952	106	113
Total	724,682	663,785	748,134	103	113
Turkeys					
Young	21,171	19,594	21,420	101	109
Old	133	231	229	172	99
Total	21,304	19,825	21,649	102	109
Ducks	2,325	1,998	2,063	89	103
	<i>1,000 pounds</i>	<i>1,000 pounds</i>	<i>1,000 pounds</i>	<i>Percent</i>	<i>Percent</i>
Live Weight					
Chickens					
Young	3,571,736	3,336,797	3,746,771	105	112
Mature	72,084	68,166	79,814	111	117
Light	29,091	26,773	33,551	115	125
Heavy	42,993	41,393	46,263	108	112
Total	3,643,820	3,404,963	3,826,585	105	112
Turkeys					
Young	575,976	522,575	604,018	105	116
Old	3,643	6,645	6,495	178	98
Total	579,619	529,220	610,513	105	115
Ducks	15,406	13,404	14,088	91	105
Other Poultry	808	585	620	77	106
Total Poultry	4,239,653	3,948,172	4,451,806	105	113
	<i>Pounds</i>	<i>Pounds</i>	<i>Pounds</i>	<i>Percent</i>	<i>Percent</i>
Average Live Weight					
Chickens					
Young	5.03	5.13	5.12	102	100
Mature	5.15	5.22	5.06	98	97
Light	3.47	3.44	3.42	99	99
Heavy	7.65	7.86	7.77	102	99
Total	5.03	5.13	5.11	102	100
Turkeys					
Young	27.20	26.67	28.20	104	106
Old	27.64	28.65	28.33	102	99
Total	27.21	26.69	28.20	104	106
Ducks	6.63	6.71	6.83	103	102

See footnote(s) at end of table.

--continued

**Poultry Slaughter: Number, Live Weight, and Average Live Weight by Type,
United States, January 2002¹ (continued)**

Commodity	January to Date			Percent of	
	2000	2001	2002	2000	2001
	<i>1,000 Head</i>	<i>1,000 Head</i>	<i>1,000 Head</i>	<i>Percent</i>	<i>Percent</i>
Number Slaughtered					
Chickens					
Young	655,879	710,683	732,372	112	103
Mature	13,756	13,999	15,762	115	113
Light	8,452	8,379	9,810	116	117
Heavy	5,304	5,620	5,952	112	106
Total	669,635	724,682	748,134	112	103
Turkeys					
Young	19,037	21,171	21,420	113	101
Old	146	133	229	157	172
Total	19,183	21,304	21,649	113	102
Ducks	2,103	2,325	2,063	98	89
	<i>1,000 pounds</i>	<i>1,000 pounds</i>	<i>1,000 pounds</i>	<i>Percent</i>	<i>Percent</i>
Live Weight					
Chickens					
Young	3,306,963	3,571,736	3,746,771	113	105
Mature	70,133	72,084	79,814	114	111
Light	28,677	29,091	33,551	117	115
Heavy	41,456	42,993	46,263	112	108
Total	3,377,096	3,643,820	3,826,585	113	105
Turkeys					
Young	505,848	575,976	604,018	119	105
Old	3,850	3,643	6,495	169	178
Total	509,698	579,619	610,513	120	105
Ducks	14,020	15,406	14,088	100	91
Other Poultry	1,001	808	620	62	77
Total Poultry	3,901,815	4,239,653	4,451,806	114	105
	<i>Pounds</i>	<i>Pounds</i>	<i>Pounds</i>	<i>Percent</i>	<i>Percent</i>
Average Live Weight					
Chickens					
Young	5.04	5.03	5.12	102	102
Mature	5.10	5.15	5.06	99	98
Light	3.39	3.47	3.42	101	99
Heavy	7.82	7.65	7.77	99	102
Total	5.04	5.03	5.11	101	102
Turkeys					
Young	26.57	27.21	28.20	106	104
Old	26.37	27.39	28.36	108	104
Total	26.57	27.21	28.20	106	104
Ducks	6.67	6.63	6.83	102	103

¹ Federally inspected only.

**Poultry Slaughter: Chilled and Frozen, Pounds Certified by Type,
United States, January 2002 ¹**

Commodity	Jan 2001	Dec 2001	Jan 2002	Percent of	
				Jan 2001	Dec 2001
	<i>1,000 Pounds</i>	<i>1,000 Pounds</i>	<i>1,000 Pounds</i>	<i>Percent</i>	<i>Percent</i>
Chilled					
Chickens					
Young	2,403,066	2,235,144	2,513,531	105	112
Mature	41,737	39,683	46,534	111	117
Light	13,988	12,677	16,461	118	130
Heavy	27,749	27,006	30,073	108	111
Total	2,444,803	2,274,827	2,560,065	105	113
Turkeys					
Young	225,413	209,935	236,084	105	112
Old	2,553	4,111	4,225	165	103
Total	227,966	214,046	240,309	105	112
Ducks	4,229	4,457	4,154	98	93
Other Poultry	208	162	145	70	90
Total Poultry	2,677,206	2,493,492	2,804,673	105	112
Frozen					
Chickens					
Young	219,140	228,462	254,043	116	111
Mature	939	1,185	1,294	138	109
Light	714	978	1,110	155	113
Heavy	225	207	184	82	89
Total	220,079	229,647	255,337	116	111
Turkeys					
Young	232,903	204,058	241,071	104	118
Old	317	1,116	594	187	53
Total	233,220	205,174	241,665	104	118
Ducks	6,752	5,047	6,557	97	130
Other Poultry	296	198	226	76	114
Total Poultry	460,347	440,066	503,785	109	114
Total Chilled and Frozen					
Chickens					
Young	2,622,206	2,463,606	2,767,574	106	112
Mature	42,676	40,868	47,828	112	117
Light	14,702	13,655	17,571	120	129
Heavy	27,974	27,213	30,257	108	111
Total	2,664,882	2,504,474	2,815,402	106	112
Turkeys					
Young	458,316	413,993	477,155	104	115
Old	2,870	5,227	4,819	168	92
Total	461,186	419,220	481,974	105	115
Ducks	10,981	9,504	10,711	98	113
Other Poultry	504	360	371	74	103
Total Poultry	3,137,553	2,933,558	3,308,458	105	113

See footnote(s) at end of table.

--continued

**Poultry Slaughter: Chilled and Frozen, Pounds Certified by Type,
United States, January 2002 ¹ (continued)**

Commodity	January to Date			Percent of	
	2000	2001	2002	2000	2001
	<i>1,000 Pounds</i>	<i>1,000 Pounds</i>	<i>1,000 Pounds</i>	<i>Percent</i>	<i>Percent</i>
Chilled					
Chickens					
Young	2,218,909	2,403,066	2,513,531	113	105
Mature	38,634	41,737	46,534	120	111
Light	12,748	13,988	16,461	129	118
Heavy	25,886	27,749	30,073	116	108
Total	2,257,543	2,444,803	2,560,065	113	105
Turkeys					
Young	195,919	225,413	236,084	121	105
Old	2,157	2,553	4,225	196	165
Total	198,076	227,966	240,309	121	105
Ducks	3,750	4,229	4,154	111	98
Other Poultry	323	208	145	45	70
Total Poultry	2,459,692	2,677,206	2,804,673	114	105
Frozen					
Chickens					
Young	208,653	219,140	254,043	122	116
Mature	3,401	939	1,294	38	138
Light	2,031	714	1,110	55	155
Heavy	1,370	225	184	13	82
Total	212,054	220,079	255,337	120	116
Turkeys					
Young	201,123	232,903	241,071	120	104
Old	679	317	594	87	187
Total	201,802	233,220	241,665	120	104
Ducks	6,201	6,752	6,557	106	97
Other Poultry	283	296	226	80	76
Total Poultry	420,340	460,347	503,785	120	109
Total Chilled and Frozen					
Chickens					
Young	2,427,562	2,622,206	2,767,574	114	106
Mature	42,035	42,676	47,828	114	112
Light	14,779	14,702	17,571	119	120
Heavy	27,256	27,974	30,257	111	108
Total	2,469,597	2,664,882	2,815,402	114	106
Turkeys					
Young	397,042	458,316	477,155	120	104
Old	2,836	2,870	4,819	170	168
Total	399,878	461,186	481,974	121	105
Ducks	9,951	10,981	10,711	108	98
Other Poultry	606	504	371	61	74
Total Poultry	2,880,032	3,137,553	3,308,458	115	105

¹ Ready-to-cook weights.

**Poultry Slaughter: Ante-Mortem Condemnations by Type,
United States, January 2002 ¹**

Commodity	Jan 2001	Dec 2001	Jan 2002	Percent of		January to Date		Percent of 2001
				Jan 2001	Dec 2001	2001	2002	
				<i>1,000 Pounds</i>	<i>1,000 Pounds</i>			
Live Weight				<i>Percent</i>	<i>Percent</i>			<i>Percent</i>
Chickens								
Young	16,588	12,309	15,728	95	128	16,588	15,728	95
Mature	1,236	947	1,288	104	136	1,236	1,288	104
Light	604	471	639	106	136	604	639	106
Heavy	632	476	649	103	136	632	649	103
Total	17,824	13,256	17,016	95	128	17,824	17,016	95
Turkeys								
Young	2,044	1,310	2,008	98	153	2,044	2,008	98
Old	61	53	72	118	136	61	72	118
Total	2,105	1,363	2,080	99	153	2,105	2,080	99
Ducks	24	23	68	283	296	24	68	283
Other Poultry	6					6		
Total Poultry	19,959	14,642	19,164	96	131	19,959	19,164	96
	<i>Percent</i>	<i>Percent</i>	<i>Percent</i>	<i>Percent</i>	<i>Percent</i>	<i>Percent</i>	<i>Percent</i>	<i>Percent</i>
Percent of Total Weight Condemned ²								
Chickens								
Young	0.46	0.37	0.42	91	114	0.46	0.42	91
Mature	1.71	1.39	1.61	94	116	1.71	1.61	94
Light	2.08	1.76	1.91	92	109	2.08	1.91	92
Heavy	1.47	1.15	1.40	95	122	1.47	1.40	95
Total	0.49	0.39	0.44	90	113	0.49	0.44	90
Turkeys								
Young	0.36	0.25	0.33	92	132	0.36	0.33	92
Old	1.70	0.82	1.10	65	134	1.70	1.10	65
Total	0.36	0.26	0.34	94	131	0.36	0.34	94
Ducks	0.15	0.17	0.49	327	288	0.15	0.49	327
Other Poultry	0.73	0.13	0.06	8	46	0.73	0.06	8
Total Poultry	0.47	0.37	0.43	91	116	0.47	0.43	91

¹ Federally inspected only.

² Pounds condemned as a percent of live weight pounds inspected.

**Poultry Slaughter: Post-Mortem Condemnations by Type,
United States, January 2002 ¹**

Commodity	Jan 2001	Dec 2001	Jan 2002	Percent of		January to Date		Percent of 2001
				Jan 2001	Dec 2001	2001	2002	
				<i>1,000 Pounds</i>				
	<i>1,000 Pounds</i>	<i>1,000 Pounds</i>	<i>1,000 Pounds</i>	<i>Percent</i>	<i>Percent</i>	<i>1,000 Pounds</i>	<i>1,000 Pounds</i>	<i>Percent</i>
N.Y. Dressed Weight								
Chickens								
Young	46,919	30,873	36,967	79	120	46,919	36,967	79
Mature	3,747	3,925	4,281	114	109	3,747	4,281	114
Light	2,244	2,096	2,450	109	117	2,244	2,450	109
Heavy	1,503	1,829	1,831	122	100	1,503	1,831	122
Total	50,666	34,798	41,248	81	119	50,666	41,248	81
Turkeys								
Young	12,572	9,370	11,352	90	121	12,572	11,352	90
Old	242	373	441	182	118	242	441	182
Total	12,814	9,743	11,793	92	121	12,814	11,793	92
Ducks	389	238	263	68	111	389	263	68
Other Poultry	8	11	7	88	64	8	7	88
Total Poultry	63,877	44,790	53,311	83	119	63,877	53,311	83
	<i>Percent</i>	<i>Percent</i>	<i>Percent</i>	<i>Percent</i>	<i>Percent</i>	<i>Percent</i>	<i>Percent</i>	<i>Percent</i>
Percent of Total Weight Condemned ²								
Chickens								
Young	1.46	1.03	1.10	75	107	1.46	1.10	75
Mature	5.78	6.40	5.96	103	93	5.78	5.96	103
Light	8.58	8.71	8.12	95	93	8.58	8.12	95
Heavy	3.89	4.92	4.40	113	89	3.89	4.40	113
Total	1.55	1.14	1.20	77	105	1.55	1.20	77
Turkeys								
Young	2.42	1.99	2.09	86	105	2.42	2.09	86
Old	7.34	6.23	7.55	103	121	7.34	7.55	103
Total	2.46	2.05	2.15	87	105	2.46	2.15	87
Ducks	2.81	1.99	2.07	74	104	2.81	2.07	74
Other Poultry	1.15	2.02	1.25	109	62	1.15	1.25	109
Total Poultry	1.67	1.26	1.33	80	106	1.67	1.33	80

¹ Federally inspected only.

² Pounds condemned as a percent of live weight pounds inspected.

**Young Chickens Slaughtered: Number, Live Weight, and Average Live Weight,
by State and United States, January 2002**

State	Number Slaughtered		Live Weight		Average Live Weight	
	2001	2002	2001	2002	2001	2002
	<i>1,000 Head</i>	<i>1,000 Head</i>	<i>1,000 Pounds</i>	<i>1,000 Pounds</i>	<i>Pounds</i>	<i>Pounds</i>
AL	80,295	85,747	405,756	434,168	5.05	5.06
AR	102,687	103,425	506,396	508,063	4.93	4.91
CA	*	*	*	*	*	*
DE	22,425	22,471	129,297	136,979	5.77	6.10
FL	10,219	11,038	54,287	64,590	5.31	5.85
GA	98,541	104,937	492,952	521,312	5.00	4.97
KY	18,277	20,356	94,691	106,133	5.18	5.21
LA	14,549	15,909	68,456	79,217	4.71	4.98
MD	16,591	16,802	77,811	79,832	4.69	4.75
MS	58,955	65,674	288,437	328,703	4.89	5.01
MO	31,856	31,921	146,176	152,496	4.59	4.78
NJ	*	*	*	*	*	*
NY	*	*	*	*	*	*
NC	58,240	59,523	335,198	364,444	5.76	6.12
OH	3,913	3,273	17,022	18,821	4.35	5.75
PA	9,420	9,778	49,105	52,228	5.21	5.34
SC	20,069	19,515	106,831	110,489	5.32	5.66
TN	19,175	20,940	88,709	100,035	4.63	4.78
TX	50,859	51,355	244,237	250,297	4.80	4.87
VA	30,415	29,613	149,563	147,284	4.92	4.97
WA	*	4,815	*	25,918	*	5.38
Oth Sts	64,197	55,280	316,812	265,762	4.93	4.81
US	710,683	732,372	3,571,736	3,746,771	5.03	5.12

* Included in "Other States" to avoid disclosing individual operations.

**Young Chickens Slaughtered: Pounds Certified and Post-Mortem Condemnations
by State and United States, January 2002**

State	Total Chilled and Frozen Pounds Certified ¹		Post-Mortem Condemnations			
			N.Y. Dressed Weight		Percent ²	
	2001	2002	2001	2002	2001	2002
	<i>1,000 Pounds</i>	<i>1,000 Pounds</i>	<i>1,000 Pounds</i>	<i>1,000 Pounds</i>	<i>Percent</i>	<i>Percent</i>
AL	299,028	321,788	5,769	4,413	1.58	1.13
AR	362,514	359,578	7,892	6,487	1.73	1.42
CA	*	*	*	*	*	*
DE	92,813	98,974	2,475	2,489	2.13	2.02
FL	38,781	43,824	832	830	1.70	1.43
GA	361,310	376,799	6,070	4,186	1.37	0.89
KY	70,830	78,618	431	690	0.51	0.72
LA	48,213	55,395	689	521	1.12	0.73
MD	55,489	56,983	1,190	1,128	1.70	1.57
MS	219,731	252,702	2,523	2,011	0.97	0.68
MO	107,213	111,131	1,738	1,258	1.32	0.92
NJ	*	*	*	*	*	*
NY	*	*	*	*	*	*
NC	252,515	288,852	5,246	3,897	1.74	1.19
OH	12,151	13,498	262	323	1.71	1.91
PA	34,062	35,912	1,225	1,313	2.77	2.79
SC	77,897	81,508	1,507	898	1.57	0.90
TN	63,732	73,075	796	777	1.00	0.86
TX	188,538	194,077	2,844	2,107	1.29	0.94
VA	105,165	106,940	1,467	1,427	1.09	1.08
WA	*	19,351	*	370	*	1.59
Oth Sts	232,224	198,569	3,963	1,842	1.39	0.77
US	2,622,206	2,767,574	46,919	36,967	1.46	1.10

* Included in "Other States" to avoid disclosing individual operations.

¹ Ready-to-cook weights.

² Pounds condemned as percent of equivalent N.Y. dressed weight of quantity inspected.

**Chickens Slaughtered: Number Condemned Post-Mortem by Cause, by Type,
by State and United States, January 2002**

State	Tuber- culosis	Leukosis	Septicemia	Airsac- culitis	Synovitis	Tumors
	<i>Number of Head</i>	<i>Number of Head</i>	<i>Number of Head</i>	<i>Number of Head</i>	<i>Number of Head</i>	<i>Number of Head</i>
Young Birds						
AL		802	130,332	103,004	2,395	7,711
AR		7,395	310,331	170,950	8,519	3,168
CA		*	*	*	287	1,859
DE		2,833	118,935	80,081	*	*
FL		170	*	*	*	*
GA		913	106,957	124,777	542	5,188
IN		*	*	*	*	*
KY		*	28,570	*	*	*
LA		114	21,537	13,492	*	828
MD		2,786	64,617	46,009	*	*
MS		452	67,239	50,076	*	1,736
MO		*	84,293	*	*	4,512
NJ		*	*	*	*	*
NY		405	*	*	338	*
NC		1,237	129,981	86,964	103	16,336
OH		*	17,654	2,255	*	*
PA		710	39,166	32,762	330	*
SC		105	21,707	*	*	1,157
TN		1,021	43,629	20,606	*	772
TX		203	125,532	72,088	291	1,844
VA		*	65,675	52,077	*	*
WA		*	26,224	2,139	*	*
Oth Sts		9,930	175,262	125,182	6,571	22,028
US		29,076	1,577,641	982,462	19,376	67,139
Mature Birds						
Light	7	1,520	288,324	15,858	151	155,355
Heavy		1,025	81,804	2,563	271	10,524
US	7	2,545	370,128	18,421	422	165,879

See footnote(s) at end of table.

--continued

**Chickens Slaughtered: Number Condemned Post-Mortem by Cause, by Type,
by State and United States, January 2002 (continued)**

	Bruises	Cadaver	Contam-ination	Overscald	Other	Total
	<i>Number of Head</i>	<i>Number of Head</i>	<i>Number of Head</i>	<i>Number of Head</i>	<i>Number of Head</i>	<i>Number of Head</i>
Young Birds						
AL	6,255	24,406	29,357	8,561	96,214	409,037
AR	8,142	41,705	32,996	3,377	67,993	654,576
CA	372	*	1,263	608	*	114,117
DE	2,807	10,436	10,220	6,022	28,833	266,113
FL	887	4,505	3,333	*	12,275	*
GA	6,410	39,148	21,875	5,132	163,301	474,243
IN	*	*	*	*	*	*
KY	330	11,368	5,046	1,382	6,223	73,369
LA	571	4,492	5,240	*	*	54,225
MD	*	*	*	958	29,047	199,957
MS	3,710	13,182	11,636	*	47,738	197,103
MO	1,782	11,701	10,081	*	25,603	186,115
NJ	*	*	*	*	*	*
NY	629	*	*	309	*	*
NC	5,541	35,412	26,268	9,157	68,017	379,016
OH	282	*	1,437	*	*	32,640
PA	1,909	5,076	6,363	*	57,145	144,903
SC	*	*	2,513	3,570	10,157	75,363
TN	1,698	9,804	5,849	483	*	106,582
TX	1,271	8,929	13,804	565	16,286	240,813
VA	1,833	8,005	*	*	20,671	167,731
WA	*	*	*	18	*	*
Oth Sts	6,516	45,520	70,310	7,279	85,280	264,220
US	50,945	273,689	257,591	47,421	734,783	4,040,123
Mature Birds						
Light	27,699	16,777	179,709	1,149	52,734	739,283
Heavy	1,823	18,153	16,645	1,386	39,510	173,704
US	29,522	34,930	196,354	2,535	92,244	912,987

* Included in "Other States" to avoid disclosing individual operations.

Young Turkeys (Mature) Slaughtered: Number, Live Weight, and Average Live Weight, by State and United States, January 2002

State	Number Slaughtered		Live Weight		Average Live Weight	
	2001	2002	2001	2002	2001	2002
	<i>1,000 Head</i>	<i>1,000 Head</i>	<i>1,000 Pounds</i>	<i>1,000 Pounds</i>	<i>Pounds</i>	<i>Pounds</i>
AR	2,281	2,769	39,718	48,654	17.41	17.57
CA	*	1,070	*	27,629	*	25.82
IA	1,347	1,327	42,851	45,209	31.82	34.08
MN	2,915	2,686	78,821	76,781	27.04	28.59
MO	2,187	1,862	58,765	51,677	26.87	27.76
NC	*	2,770	*	85,077	*	30.71
OH	*	*	*	*	*	*
PA	*	*	*	*	*	*
VA	3,111	3,346	69,038	78,436	22.19	23.44
Oth Sts	9,330	5,590	286,783	190,555	30.74	34.09
US	21,171	21,420	575,976	604,018	27.20	28.20

* Included in "Other States" to avoid disclosing individual operations.

Young Turkeys (Mature) Slaughtered: Pounds Certified and Post-Mortem Condemnations, by State and United States, January 2002

State	Total Chilled and Frozen Pounds Certified ¹		Post-Mortem Condemnations			
			N.Y. Dressed Weight		Percent ²	
	2001	2002	2001	2002	2001	2002
	<i>1,000 Pounds</i>	<i>1,000 Pounds</i>	<i>1,000 Pounds</i>	<i>1,000 Pounds</i>	<i>Percent</i>	<i>Percent</i>
AR	33,235	40,299	678	702	1.90	1.60
CA	*	24,212	*	441	*	1.78
IA	33,862	35,025	1,297	1,257	3.36	3.09
MN	62,499	60,942	2,180	2,040	3.07	2.95
MO	47,705	39,747	1,319	1,099	2.49	2.36
NC	*	67,256	*	1,505	*	1.96
OH	*	*	*	*	*	*
PA	*	*	*	*	*	*
VA	53,512	60,324	898	1,066	1.45	1.51
Oth Sts	227,503	149,350	6,200	3,242	2.40	1.89
US	458,316	477,155	12,572	11,352	2.42	2.09

* Included in "Other States" to avoid disclosing individual operations.

¹ Ready-to-cook weights.

² Pounds condemned as percent of equivalent N.Y. dressed weight of quantity inspected.

**Turkeys Slaughtered: Number Condemned Post-Mortem by Cause, by Type,
by State and United States, January 2002**

State	Tuber- culosis	Leukosis	Septicemia	Airsac- culitis	Synovitis	Tumors
	<i>Number of Head</i>	<i>Number of Head</i>	<i>Number of Head</i>	<i>Number of Head</i>	<i>Number of Head</i>	<i>Number of Head</i>
Young (Mature)						
AR			6,688	*	5	2
CA		*	3,887	*	*	*
IA			6,281	2,886	*	*
MN		*	18,697	*	*	*
MO			14,132	*	*	*
NC		3	*	*	*	*
OH		*	*	*	*	*
PA		*	*	*	*	*
VA		82	3,776	210	*	*
Other States		97	34,292	13,482	5,737	163
US		182	87,753	16,578	5,742	165
Old (Breeders)						
US		213	6,140	1,419	113	336
	Bruises	Cadaver	Contam- ination	Overscald	Other	Total
	<i>Number of Head</i>	<i>Number of Head</i>	<i>Number of Head</i>	<i>Number of Head</i>	<i>Number of Head</i>	<i>Number of Head</i>
Young (Mature)						
AR	*	645	*	*	*	*
CA	19	*	66	*	136	4,562
IA	50	*	478	*	*	13,507
MN	177	455	*	*	1,585	30,941
MO	51	409	697	4	*	17,783
NC	133	1,225	*	126	*	13,675
OH	*	*	*	*	*	*
PA	*	*	*	*	*	*
VA	*	1,870	390	*	*	8,300
Other States	336	3,920	10,033	1,820	12,073	58,350
US	766	8,524	11,664	1,950	13,794	147,118
Old (Breeders)						
US	14	300	264	36	792	9,627

* Included in "Other States" to avoid disclosing individual operations.

Poultry Slaughter Estimates

Data Sources: Primary data for poultry slaughter estimates are obtained from the Poultry Inspection Form (FSIS 6000-21). This form is completed by inspectors of the Food Safety and Inspection Service (FSIS), USDA for all Federally Inspected (FI) plants. Over 99 percent of the total U.S. slaughter for any species is under FI. The FSIS 6000-21 forms collect number of head slaughtered daily under FI by species and class as well as condemnations and total live and dressed weights. Approximately 350 plants in the U.S. are operated under Federal Inspection.

Revision Policy: Revisions are generally the result of late reports received by FSIS from plants and are usually less than one-half of 1 percent of the preliminary totals. Revisions for the previous month and year-to-date totals are published in each monthly release. Final data are published in the annual summary released in April and reflect any late reports or corrections which occurred after the monthly revision were published.

Procedures and Reliability: Plant inspectors submit forms (FSIS 6000-21) weekly summarizing the plant's activity. When inconsistencies in the data are detected, the reports are returned to the inspectors for correction. Inspectors correct or validate the report and resubmit it. The reports cover weekly activities through Saturday night and reported data are allocated to the appropriate month as it enters the database.

A NASS computer program provides a review of current data with historical data for each plant. An edit provides checks for the detection of errors such as invalid plant information, duplication, and erroneous data. Data are summarized weekly and accumulated to monthly totals for this release.

Data for major slaughter plants with missing reports are adjusted prior to publication to assure that all plants slaughtering a significant portion of a specific class are accounted for each week. Estimates for missing weeks are made only after verifying that the plant was in operation. Adjustments are based on either the previous week's information or a week determined to be similar to the one missing. Late reports replace imputed data as they become available. While there is a varying degree of incompleteness from month to month, it has only a minimal impact on the published totals.

Poultry slaughter estimates are based on a census of operating plants and, therefore, have no sampling error. However, they may be subject to errors such as omissions, duplications, and mistakes in reporting, recording, and processing the data. These errors are minimized through strict quality controls in the edit and summarization process, and a careful review of all reported data for consistency and reasonableness.

State data are published for selected states for young chickens and young turkeys. State data are not published if less than three plants operate for a species in a State, or if one plant has 60 percent or more of the total live weight for that species. Data for all states not published are included in the "Other States" category. Also included in this category are data for published states that are confidential (denoted by an *). Data for all states are included in the U.S. totals. For 2001, young chickens were killed in 31 states, young turkeys in 21 states.

Definitions

Ante-Mortem Condemnations - Birds condemned prior to their entry into the slaughter plant.

Certified Ready-to-Cook - The weight of poultry certified wholesome by inspection after post-mortem condemnation pounds are removed. Ready-to-cook represents poultry meat ready for the marketing channel.

Ducks - Includes all ducks regardless of age and weight.

Fryer-Roaster Turkeys - Young immature birds, usually under 16 weeks of age. Included with young turkeys.

Mature Chickens - Fowl from breeder and market egg flocks and stags and cocks.

New York Dressed Weight - Carcass weight after only feathers and blood are removed. This weight is approximately 90% of live weight.

Old Turkeys (Breeders) - Fully matured birds held for egg production, usually over 15 months of age.

Other Poultry - Includes all other ready-to-cook products which bear the USDA Inspected for Wholesomeness legend.

Post-Mortem Condemnations - Carcasses or parts condemned by the inspector because of disease or mishandling and removed from the slaughter line and destroyed.

Young Chickens - Commercially grown broilers-fryers and other young immature birds such as roasters and capons.

Young Turkeys (Mature) - Young birds grown to a matured market age, about 5 months.

The next "Poultry Slaughter" report will be released at 3 p.m. ET on April 5, 2002.

The United States Department of Agriculture (USDA) prohibits discrimination in all its programs on the basis of race, color, national origin, gender, religion, age, disability, political beliefs, sexual orientation, and marital or family status. (Not all prohibited bases apply to all programs.) Persons with disabilities who require alternative means for communication of program information (braille, large print, audiotape, etc.) should contact the USDA's TARGET Center at 202-720-2600 (voice and TDD).

To file a complaint of discrimination, write USDA, Director, Office of Civil Rights, Room 326-W, Whitten Building, 1400 Independence Avenue, SW, Washington, D.C., 20250-9410, or call 202-720-5964 (voice or TDD). USDA is an equal opportunity provider and employer.

ACCESS TO REPORTS!!

For your convenience, there are several ways to obtain NASS reports, data products, and services:

INTERNET ACCESS

All NASS reports are available free of charge on the worldwide Internet. For access, connect to the Internet and go to the NASS Home Page at: <http://www.usda.gov/nass/>. Select "Today's Reports" or Publications and then Reports by Calendar or Publications and then Search, by Title or Subject.

E-MAIL SUBSCRIPTION

There are two options for subscribing via e-mail. All NASS reports are available by subscription free of charge direct to your e-mail address. 1) Starting with the NASS Home Page at <http://www.usda.gov/nass/>, click on **Publications**, then click on the **Subscribe by E-mail** button which takes you to the page describing e-mail delivery of reports. Finally, click on **Go to the Subscription Page** and follow the instructions. 2) If you do NOT have Internet access, send an e-mail message to: usda-reports@usda.mannlib.cornell.edu. In the body of the message type the word: **list**.

AUTOFAX ACCESS

NASSFax service is available for some reports from your fax machine. Please call 202-720-2000, using the handset attached to your fax. Respond to the voice prompts. Document 0411 is a list of available reports.

PRINTED REPORTS OR DATA PRODUCTS

CALL OUR TOLL-FREE ORDER DESK: 800-999-6779 (U.S. and Canada)
Other areas, please call 703-605-6220 FAX: 703-605-6900
(Visa, MasterCard, check, or money order acceptable for payment.)

ASSISTANCE

For **assistance** with general agricultural statistics or further information about NASS or its products or services, contact the **Agricultural Statistics Hotline** at **800-727-9540**, 7:30 a.m. to 4:00 p.m. ET, or e-mail: nass@nass.usda.gov.
