



NASS

FACT FINDERS FOR AGRICULTURE
UNITED STATES DEPARTMENT OF AGRICULTURE

Washington, D.C.

Poultry Slaughter

Released June 30, 2006, by the National Agricultural Statistics Service (NASS), Agricultural Statistics Board, U.S. Department of Agriculture. For information on *Poultry Slaughter* call John Lange at 202-720-0585, office hours 7:00 a.m. to 4:30 p.m. ET.

Ready-to-Cook Weight Up 6 Percent From Last Year

Poultry certified wholesome during May 2006 (ready-to-cook weight) totaled 3.76 billion pounds, up 6 percent from the amount certified in May 2005. Totals for April 2006 were unchanged with 3.31 billion pounds certified.

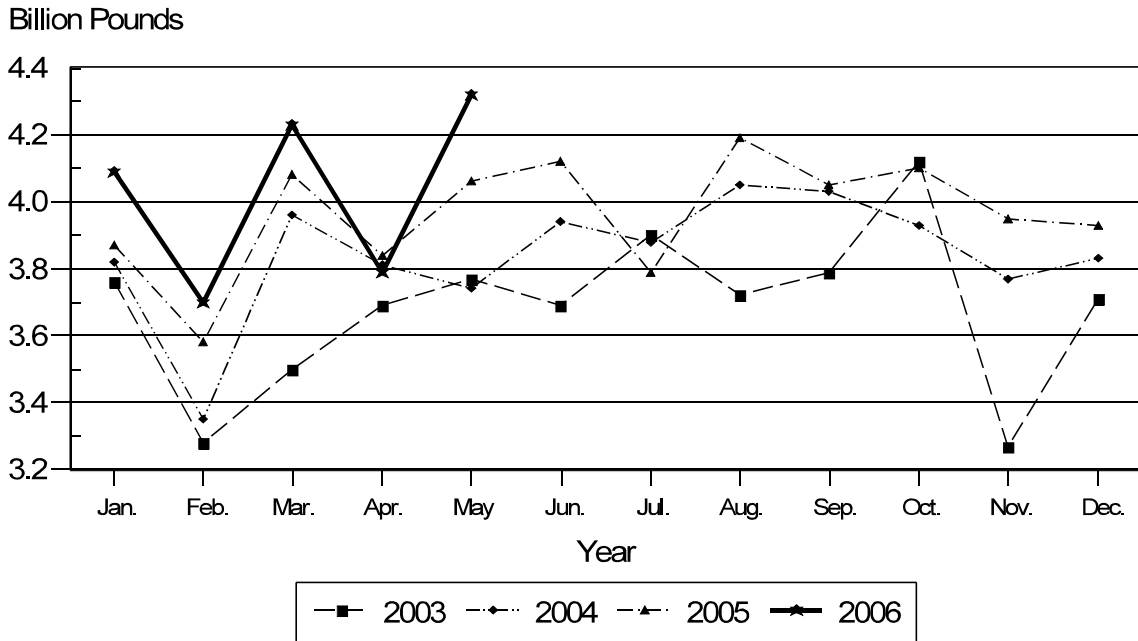
The preliminary total live weight of poultry inspected during May 2006 was 5.03 billion pounds, up 6 percent from 4.73 billion pounds a year ago. Young chickens inspected totaled 4.32 billion pounds, up 6 percent from May 2005. Mature chickens, at 72.3 million pounds, were down slightly from the previous year. Turkey inspections totaled 625 million pounds, an increase of 7 percent from a year ago. Ducks totaled 17.1 million pounds, up 10 percent from last year.

Young chickens slaughtered during May 2006 averaged 5.49 pounds per bird, up 2 percent from May 2005. The average live weight of mature chickens was 6.11 pounds per bird, up 9 percent from a year ago. Turkeys slaughtered during May 2006 averaged 28.6 pounds per bird, 1 percent above May 2005.

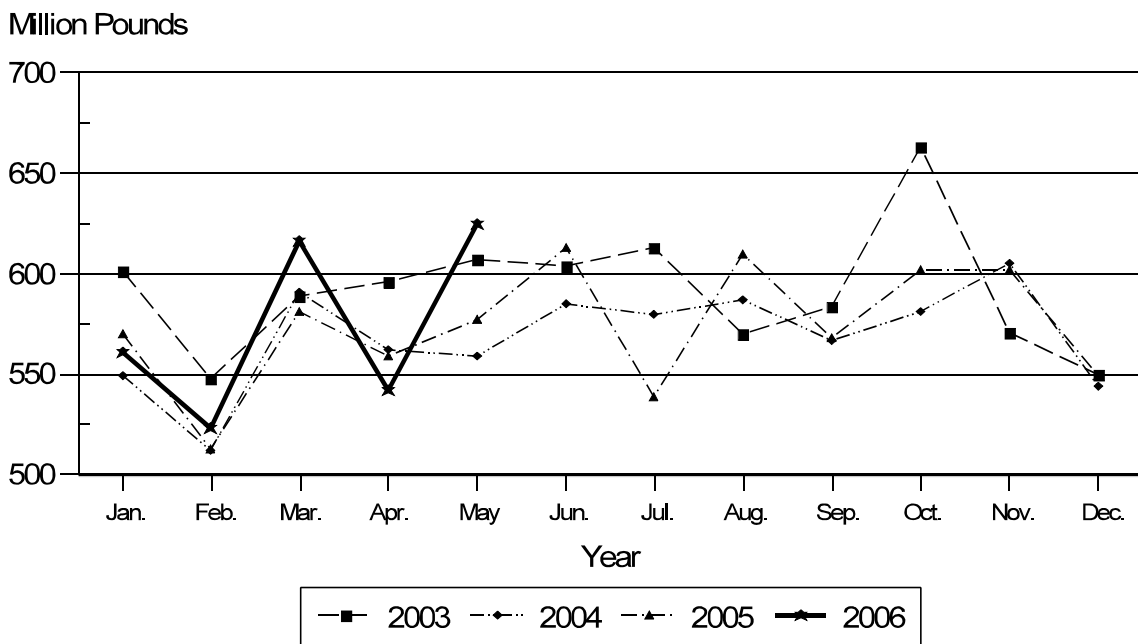
Ante-mortem condemnations during May 2006 totaled 16.7 million pounds. Condemnations were 0.33 percent of the live weight inspected, as compared with 0.32 a year earlier. Post-mortem condemnations, at 49.9 million pounds (N.Y. dressed weight), were 1.10 percent of quantities inspected, compared with 1.14 percent a year earlier.

May 2006 contained 23 weekdays (including one holiday) and four Saturdays, while May 2005 had 22 weekdays (including one holiday) and four Saturdays.

Young Chickens: Live Weight Slaughtered, by Month, 2003-2006



Young Turkeys: Live Weight Slaughtered, by Month, 2003-2006



Contents

| | Page |
|--|-------------|
| Poultry Slaughter | 4 |
| Young Chickens Slaughtered | 10 |
| Chickens Slaughtered: Number Condemned Post-Mortem | 12 |
| Young Turkeys (Mature) Slaughtered | 16 |
| Turkeys Slaughtered: Number Condemned Post-Mortem | 17 |
| Reliability Statement | 18 |
| Definitions | 19 |
| Information Contacts | 19 |

**Poultry Slaughter: Number, Live Weight, and Average Live Weight by Type,
United States, May 2006¹**

| Commodity | May 2005 | Apr 2006 | May 2006 | Percent of | |
|---------------------|---------------------|---------------------|---------------------|----------------|----------------|
| | | | | May 2005 | Apr 2006 |
| | <i>1,000 Head</i> | <i>1,000 Head</i> | <i>1,000 Head</i> | <i>Percent</i> | <i>Percent</i> |
| Number Slaughtered | | | | | |
| Chickens | | | | | |
| Young | 758,078 | 694,110 | 786,854 | 104 | 113 |
| Mature | 12,977 | 10,698 | 11,834 | 91 | 111 |
| Light | 6,829 | 4,647 | 4,953 | 73 | 107 |
| Heavy | 6,148 | 6,051 | 6,881 | 112 | 114 |
| Total | 771,055 | 704,808 | 798,688 | 104 | 113 |
| Turkeys | | | | | |
| Young | 20,296 | 19,141 | 21,689 | 107 | 113 |
| Old | 203 | 240 | 129 | 64 | 54 |
| Total | 20,499 | 19,381 | 21,818 | 106 | 113 |
| Ducks | 2,321 | 2,289 | 2,523 | 109 | 110 |
| | <i>1,000 pounds</i> | <i>1,000 pounds</i> | <i>1,000 pounds</i> | <i>Percent</i> | <i>Percent</i> |
| Live Weight | | | | | |
| Chickens | | | | | |
| Young | 4,060,294 | 3,786,441 | 4,319,094 | 106 | 114 |
| Mature | 72,568 | 64,476 | 72,267 | 100 | 112 |
| Light | 22,648 | 15,512 | 16,369 | 72 | 106 |
| Heavy | 49,920 | 48,964 | 55,898 | 112 | 114 |
| Total | 4,132,862 | 3,850,917 | 4,391,361 | 106 | 114 |
| Turkeys | | | | | |
| Young | 576,830 | 542,249 | 621,081 | 108 | 115 |
| Old | 5,381 | 6,117 | 3,484 | 65 | 57 |
| Total | 582,211 | 548,366 | 624,565 | 107 | 114 |
| Ducks | 15,567 | 15,967 | 17,108 | 110 | 107 |
| Other Poultry | 422 | 294 | 381 | 90 | 130 |
| Total Poultry | 4,731,062 | 4,415,544 | 5,033,415 | 106 | 114 |
| | <i>Pounds</i> | <i>Pounds</i> | <i>Pounds</i> | <i>Percent</i> | <i>Percent</i> |
| Average Live Weight | | | | | |
| Chickens | | | | | |
| Young | 5.36 | 5.46 | 5.49 | 102 | 101 |
| Mature | 5.59 | 6.03 | 6.11 | 109 | 101 |
| Light | 3.32 | 3.34 | 3.30 | 99 | 99 |
| Heavy | 8.12 | 8.09 | 8.12 | 100 | 100 |
| Total | 5.36 | 5.46 | 5.50 | 103 | 101 |
| Turkeys | | | | | |
| Young | 28.42 | 28.33 | 28.64 | 101 | 101 |
| Old | 26.51 | 25.49 | 27.01 | 102 | 106 |
| Total | 28.40 | 28.29 | 28.63 | 101 | 101 |
| Ducks | 6.70 | 6.98 | 6.78 | 101 | 97 |

See footnote(s) at end of table.

--continued

**Poultry Slaughter: Number, Live Weight, and Average Live Weight by Type,
United States, May 2006¹ (continued)**

| Commodity | January to Date | | | Percent of | |
|----------------------------|---------------------|---------------------|---------------------|----------------|----------------|
| | 2004 | 2005 | 2006 | 2004 | 2005 |
| | <i>1,000 Head</i> | <i>1,000 Head</i> | <i>1,000 Head</i> | <i>Percent</i> | <i>Percent</i> |
| Number Slaughtered | | | | | |
| Chickens | | | | | |
| Young | 3,574,647 | 3,633,890 | 3,681,629 | 103 | 101 |
| Mature | 56,934 | 61,936 | 56,717 | 100 | 92 |
| Light | 29,478 | 32,738 | 25,144 | 85 | 77 |
| Heavy | 27,456 | 29,198 | 31,573 | 115 | 108 |
| Total | 3,631,581 | 3,695,826 | 3,738,346 | 103 | 101 |
| Turkeys | | | | | |
| Young | 100,759 | 96,502 | 98,474 | 98 | 102 |
| Old | 947 | 914 | 894 | 94 | 98 |
| Total | 101,706 | 97,416 | 99,368 | 98 | 102 |
| Ducks | 10,545 | 11,228 | 11,827 | 112 | 105 |
| | <i>1,000 pounds</i> | <i>1,000 pounds</i> | <i>1,000 pounds</i> | <i>Percent</i> | <i>Percent</i> |
| Live Weight | | | | | |
| Chickens | | | | | |
| Young | 18,676,232 | 19,427,125 | 20,128,752 | 108 | 104 |
| Mature | 317,944 | 345,593 | 336,873 | 106 | 97 |
| Light | 98,949 | 108,548 | 83,713 | 85 | 77 |
| Heavy | 218,995 | 237,045 | 253,160 | 116 | 107 |
| Total | 18,994,176 | 19,772,718 | 20,465,625 | 108 | 104 |
| Turkeys | | | | | |
| Young | 2,772,432 | 2,800,452 | 2,862,413 | 103 | 102 |
| Old | 25,686 | 24,609 | 23,747 | 92 | 96 |
| Total | 2,798,118 | 2,825,061 | 2,886,160 | 103 | 102 |
| Ducks | 70,729 | 75,791 | 80,649 | 114 | 106 |
| Other Poultry | 1,559 | 1,768 | 1,535 | 98 | 87 |
| Total Poultry | 21,864,582 | 22,675,338 | 23,433,969 | 107 | 103 |
| | <i>Pounds</i> | <i>Pounds</i> | <i>Pounds</i> | <i>Percent</i> | <i>Percent</i> |
| Average Live Weight | | | | | |
| Chickens | | | | | |
| Young | 5.22 | 5.35 | 5.47 | 105 | 102 |
| Mature | 5.58 | 5.58 | 5.94 | 106 | 106 |
| Light | 3.36 | 3.32 | 3.33 | 99 | 100 |
| Heavy | 7.98 | 8.12 | 8.02 | 101 | 99 |
| Total | 5.23 | 5.35 | 5.47 | 105 | 102 |
| Turkeys | | | | | |
| Young | 27.52 | 29.02 | 29.07 | 106 | 100 |
| Old | 27.12 | 26.92 | 26.56 | 98 | 99 |
| Total | 27.51 | 29.00 | 29.05 | 106 | 100 |
| Ducks | 6.71 | 6.75 | 6.82 | 102 | 101 |

¹ Federally inspected only.

**Poultry Slaughter: Chilled and Frozen, Pounds Certified by Type,
United States, May 2006 ¹**

| Commodity | May 2005 | Apr 2006 | May 2006 | Percent of | |
|---------------------------------|---------------------|---------------------|---------------------|----------------|----------------|
| | | | | May 2005 | Apr 2006 |
| | <i>1,000 Pounds</i> | <i>1,000 Pounds</i> | <i>1,000 Pounds</i> | <i>Percent</i> | <i>Percent</i> |
| Chilled | | | | | |
| Chickens | | | | | |
| Young | 2,743,732 | 2,557,752 | 2,916,351 | 106 | 114 |
| Mature | 44,396 | 40,128 | 44,981 | 101 | 112 |
| Light | 11,836 | 7,876 | 8,376 | 71 | 106 |
| Heavy | 32,560 | 32,252 | 36,605 | 112 | 113 |
| Total | 2,788,128 | 2,597,880 | 2,961,332 | 106 | 114 |
| Turkeys | | | | | |
| Young | 250,637 | 240,667 | 268,988 | 107 | 112 |
| Old | 3,448 | 3,874 | 2,439 | 71 | 63 |
| Total | 254,085 | 244,541 | 271,427 | 107 | 111 |
| Ducks | 5,827 | 6,043 | 6,208 | 107 | 103 |
| Other Poultry | 232 | 158 | 202 | 87 | 128 |
| Total Poultry | 3,048,272 | 2,848,622 | 3,239,169 | 106 | 114 |
| Frozen | | | | | |
| Chickens | | | | | |
| Young | 279,507 | 261,734 | 293,693 | 105 | 112 |
| Mature | 706 | 312 | 398 | 56 | 128 |
| Light | | 57 | | | |
| Heavy | 706 | 255 | 398 | 56 | 156 |
| Total | 280,213 | 262,046 | 294,091 | 105 | 112 |
| Turkeys | | | | | |
| Young | 206,387 | 189,663 | 223,814 | 108 | 118 |
| Old | 547 | 806 | 152 | 28 | 19 |
| Total | 206,934 | 190,469 | 223,966 | 108 | 118 |
| Ducks | 5,392 | 5,395 | 6,082 | 113 | 113 |
| Other Poultry | 28 | 29 | 41 | 146 | 141 |
| Total Poultry | 492,567 | 457,939 | 524,180 | 106 | 114 |
| Total Chilled and Frozen | | | | | |
| Chickens | | | | | |
| Young | 3,023,239 | 2,819,486 | 3,210,044 | 106 | 114 |
| Mature | 45,102 | 40,440 | 45,379 | 101 | 112 |
| Light | 11,836 | 7,933 | 8,376 | 71 | 106 |
| Heavy | 33,266 | 32,507 | 37,003 | 111 | 114 |
| Total | 3,068,341 | 2,859,926 | 3,255,423 | 106 | 114 |
| Turkeys | | | | | |
| Young | 457,024 | 430,330 | 492,802 | 108 | 115 |
| Old | 3,995 | 4,680 | 2,591 | 65 | 55 |
| Total | 461,019 | 435,010 | 495,393 | 107 | 114 |
| Ducks | 11,219 | 11,438 | 12,290 | 110 | 107 |
| Other Poultry | 260 | 187 | 243 | 93 | 130 |
| Total Poultry | 3,540,839 | 3,306,561 | 3,763,349 | 106 | 114 |

See footnote(s) at end of table.

--continued

**Poultry Slaughter: Chilled and Frozen, Pounds Certified by Type,
United States, May 2006¹ (continued)**

| Commodity | January to Date | | | Percent of | |
|---------------------------------|---------------------|---------------------|---------------------|----------------|----------------|
| | 2004 | 2005 | 2006 | 2004 | 2005 |
| | <i>1,000 Pounds</i> | <i>1,000 Pounds</i> | <i>1,000 Pounds</i> | <i>Percent</i> | <i>Percent</i> |
| Chilled | | | | | |
| Chickens | | | | | |
| Young | 12,583,795 | 13,137,167 | 13,576,980 | 108 | 103 |
| Mature | 196,303 | 211,479 | 209,249 | 107 | 99 |
| Light | 49,671 | 56,167 | 42,870 | 86 | 76 |
| Heavy | 146,632 | 155,312 | 166,379 | 113 | 107 |
| Total | 12,780,098 | 13,348,646 | 13,786,229 | 108 | 103 |
| Turkeys | | | | | |
| Young | 1,178,320 | 1,256,994 | 1,265,927 | 107 | 101 |
| Old | 16,118 | 15,865 | 15,203 | 94 | 96 |
| Total | 1,194,438 | 1,272,859 | 1,281,130 | 107 | 101 |
| Ducks | 33,033 | 27,767 | 29,663 | 90 | 107 |
| Other Poultry | 856 | 960 | 830 | 97 | 86 |
| Total Poultry | 14,008,425 | 14,650,232 | 15,097,852 | 108 | 103 |
| Frozen | | | | | |
| Chickens | | | | | |
| Young | 1,196,409 | 1,329,897 | 1,389,479 | 116 | 104 |
| Mature | 1,720 | 2,035 | 1,831 | 106 | 90 |
| Light | 274 | 5 | 99 | 36 | 1,980 |
| Heavy | 1,446 | 2,030 | 1,732 | 120 | 85 |
| Total | 1,198,129 | 1,331,932 | 1,391,310 | 116 | 104 |
| Turkeys | | | | | |
| Young | 1,009,964 | 959,210 | 1,000,464 | 99 | 104 |
| Old | 2,778 | 2,583 | 2,718 | 98 | 105 |
| Total | 1,012,742 | 961,793 | 1,003,182 | 99 | 104 |
| Ducks | 21,285 | 26,555 | 28,070 | 132 | 106 |
| Other Poultry | 177 | 134 | 141 | 80 | 105 |
| Total Poultry | 2,232,333 | 2,320,414 | 2,422,703 | 109 | 104 |
| Total Chilled and Frozen | | | | | |
| Chickens | | | | | |
| Young | 13,780,204 | 14,467,064 | 14,966,459 | 109 | 103 |
| Mature | 198,023 | 213,514 | 211,080 | 107 | 99 |
| Light | 49,945 | 56,172 | 42,969 | 86 | 76 |
| Heavy | 148,078 | 157,342 | 168,111 | 114 | 107 |
| Total | 13,978,227 | 14,680,578 | 15,177,539 | 109 | 103 |
| Turkeys | | | | | |
| Young | 2,188,284 | 2,216,204 | 2,266,391 | 104 | 102 |
| Old | 18,896 | 18,448 | 17,921 | 95 | 97 |
| Total | 2,207,180 | 2,234,652 | 2,284,312 | 103 | 102 |
| Ducks | 54,318 | 54,322 | 57,733 | 106 | 106 |
| Other Poultry | 1,033 | 1,094 | 971 | 94 | 89 |
| Total Poultry | 16,240,758 | 16,970,646 | 17,520,555 | 108 | 103 |

¹ Ready-to-cook weights.

**Poultry Slaughter: Ante-Mortem Condemnations by Type,
United States, May 2006 ¹**

| Commodity | May 2005 | Apr 2006 | May 2006 | Percent of | | January to Date | | Percent of 2005 |
|---|---------------------|---------------------|---------------------|---------------------|----------------|---------------------|---------------------|-----------------------|
| | | | | May 2005 | Apr 2006 | 2005 | 2006 | |
| | | | | <i>1,000 Pounds</i> | | | | |
| | <i>1,000 Pounds</i> | <i>1,000 Pounds</i> | <i>1,000 Pounds</i> | <i>Percent</i> | <i>Percent</i> | <i>1,000 Pounds</i> | <i>1,000 Pounds</i> | <i>Percent</i> |
| Live Weight | | | | | | | | |
| Chickens | | | | | | | | |
| Young | 12,695 | 11,430 | 13,958 | 110 | 122 | 64,883 | 64,084 | 99 |
| Mature | 984 | 865 | 996 | 101 | 115 | 4,411 | 4,059 | 92 |
| Light | 347 | 295 | 283 | 82 | 96 | 1,667 | 1,230 | 74 |
| Heavy | 637 | 570 | 713 | 112 | 125 | 2,744 | 2,829 | 103 |
| Total | 13,679 | 12,295 | 14,954 | 109 | 122 | 69,294 | 68,143 | 98 |
| Turkeys | | | | | | | | |
| Young | 1,426 | 1,593 | 1,662 | 117 | 104 | 7,997 | 8,515 | 106 |
| Old | 32 | 83 | 59 | 184 | 71 | 241 | 290 | 120 |
| Total | 1,458 | 1,676 | 1,721 | 118 | 103 | 8,238 | 8,805 | 107 |
| Ducks | 33 | 27 | 37 | 112 | 137 | 149 | 152 | 102 |
| Other Poultry | | | 1 | | | 1 | 1 | 100 |
| Total Poultry | 15,170 | 13,998 | 16,713 | 110 | 119 | 77,682 | 77,101 | 99 |
| | <i>Percent</i> | <i>Percent</i> | <i>Percent</i> | <i>Percent</i> | <i>Percent</i> | <i>Percent</i> | <i>Percent</i> | <i>Percent</i> |
| Percent of Total Weight Condemned ² | | | | | | | | |
| Chickens | | | | | | | | |
| Young | 0.31 | 0.30 | 0.32 | 103 | 107 | 0.33 | 0.32 | 97 |
| Mature | 1.36 | 1.34 | 1.38 | 101 | 103 | 1.28 | 1.20 | 94 |
| Light | 1.54 | 1.90 | 1.73 | 112 | 91 | 1.54 | 1.47 | 95 |
| Heavy | 1.28 | 1.16 | 1.28 | 100 | 110 | 1.16 | 1.12 | 97 |
| Total | 0.33 | 0.32 | 0.34 | 103 | 106 | 0.35 | 0.33 | 94 |
| Turkeys | | | | | | | | |
| Young | 0.25 | 0.29 | 0.27 | 108 | 93 | 0.29 | 0.30 | 103 |
| Old | 0.58 | 1.36 | 1.69 | 291 | 124 | 0.98 | 1.22 | 124 |
| Total | 0.25 | 0.31 | 0.28 | 112 | 90 | 0.29 | 0.31 | 107 |
| Ducks | 0.21 | 0.17 | 0.22 | 105 | 129 | 0.20 | 0.19 | 95 |
| Other Poultry | | | 0.26 | | | 0.06 | 0.07 | 117 |
| Total Poultry | 0.32 | 0.32 | 0.33 | 103 | 103 | 0.34 | 0.33 | 97 |

¹ Federally inspected only.

² Pounds condemned as a percent of live weight pounds inspected.

**Poultry Slaughter: Post-Mortem Condemnations by Type,
United States, May 2006 ¹**

| Commodity | May 2005 | Apr 2006 | May 2006 | Percent of | | January to Date | | Percent of 2005 |
|---|---------------------|---------------------|---------------------|---------------------|----------------|---------------------|---------------------|-----------------------|
| | | | | May 2005 | Apr 2006 | 2005 | 2006 | |
| | | | | <i>1,000 Pounds</i> | | | | |
| | <i>1,000 Pounds</i> | <i>1,000 Pounds</i> | <i>1,000 Pounds</i> | <i>Percent</i> | <i>Percent</i> | <i>1,000 Pounds</i> | <i>1,000 Pounds</i> | <i>Percent</i> |
| N.Y. Dressed Weight | | | | | | | | |
| Chickens | | | | | | | | |
| Young | 36,278 | 34,194 | 37,320 | 103 | 109 | 179,944 | 182,997 | 102 |
| Mature | 3,249 | 2,785 | 3,045 | 94 | 109 | 15,808 | 14,643 | 93 |
| Light | 1,774 | 1,273 | 1,321 | 74 | 104 | 8,119 | 6,633 | 82 |
| Heavy | 1,475 | 1,512 | 1,724 | 117 | 114 | 7,689 | 8,010 | 104 |
| Total | 39,527 | 36,979 | 40,365 | 102 | 109 | 195,752 | 197,640 | 101 |
| Turkeys | | | | | | | | |
| Young | 8,362 | 8,078 | 8,936 | 107 | 111 | 43,745 | 42,981 | 98 |
| Old | 399 | 294 | 196 | 49 | 67 | 1,598 | 1,186 | 74 |
| Total | 8,761 | 8,372 | 9,132 | 104 | 109 | 45,343 | 44,167 | 97 |
| Ducks | 374 | 396 | 399 | 107 | 101 | 1,922 | 2,035 | 106 |
| Other Poultry | 5 | 3 | 5 | 100 | 167 | 23 | 17 | 74 |
| Total Poultry | 48,667 | 45,750 | 49,901 | 103 | 109 | 243,040 | 243,859 | 100 |
| | <i>Percent</i> | <i>Percent</i> | <i>Percent</i> | <i>Percent</i> | <i>Percent</i> | <i>Percent</i> | <i>Percent</i> | <i>Percent</i> |
| Percent of Total Weight Condemned ² | | | | | | | | |
| Chickens | | | | | | | | |
| Young | 0.99 | 1.00 | 0.96 | 97 | 96 | 1.03 | 1.01 | 98 |
| Mature | 4.97 | 4.80 | 4.68 | 94 | 98 | 5.08 | 4.83 | 95 |
| Light | 8.70 | 9.12 | 8.97 | 103 | 98 | 8.31 | 8.80 | 106 |
| Heavy | 3.29 | 3.43 | 3.43 | 104 | 100 | 3.60 | 3.52 | 98 |
| Total | 1.06 | 1.07 | 1.02 | 96 | 95 | 1.10 | 1.07 | 97 |
| Turkeys | | | | | | | | |
| Young | 1.61 | 1.66 | 1.60 | 99 | 96 | 1.74 | 1.67 | 96 |
| Old | 8.26 | 5.36 | 6.25 | 76 | 117 | 7.22 | 5.55 | 77 |
| Total | 1.67 | 1.70 | 1.63 | 98 | 96 | 1.78 | 1.70 | 96 |
| Ducks | 2.68 | 2.76 | 2.59 | 97 | 94 | 2.82 | 2.80 | 99 |
| Other Poultry | 1.04 | 1.13 | 1.46 | 140 | 129 | 1.45 | 1.23 | 85 |
| Total Poultry | 1.14 | 1.15 | 1.10 | 96 | 96 | 1.19 | 1.16 | 97 |

¹ Federally inspected only.

² Pounds condemned as a percent of N.Y. dressed weight of quantity inspected.

**Young Chickens Slaughtered: Number, Live Weight, and Average Live Weight,
by State and United States, May 2006**

| State | Number Slaughtered | | Live Weight | | Average Live Weight | |
|---------|--------------------|-------------------|---------------------|---------------------|---------------------|---------------|
| | April | May | April | May | April | May |
| | <i>1,000 Head</i> | <i>1,000 Head</i> | <i>1,000 Pounds</i> | <i>1,000 Pounds</i> | <i>Pounds</i> | <i>Pounds</i> |
| AL | 84,551 | 96,706 | 454,613 | 519,472 | 5.38 | 5.37 |
| AR | 92,678 | 100,947 | 482,496 | 530,432 | 5.21 | 5.25 |
| CA | * | * | * | * | * | * |
| DE | 22,520 | 26,769 | 151,577 | 181,096 | 6.73 | 6.77 |
| FL | * | * | * | * | * | * |
| GA | 101,962 | 115,407 | 525,244 | 594,429 | 5.15 | 5.15 |
| KY | 20,372 | 24,424 | 111,903 | 136,047 | 5.49 | 5.57 |
| LA | 15,497 | 18,063 | 88,780 | 102,838 | 5.73 | 5.69 |
| MD | 10,544 | 11,917 | 49,766 | 57,572 | 4.72 | 4.83 |
| MS | 58,649 | 67,835 | 337,378 | 391,217 | 5.75 | 5.77 |
| MO | 33,696 | 36,612 | 154,918 | 169,940 | 4.60 | 4.64 |
| NJ | * | * | * | * | * | * |
| NY | * | * | * | * | * | * |
| NC | 54,943 | 62,374 | 373,589 | 430,091 | 6.80 | 6.90 |
| OH | 3,430 | 3,959 | 18,401 | 21,406 | 5.36 | 5.41 |
| PA | 8,949 | 10,500 | 49,038 | 58,565 | 5.48 | 5.58 |
| SC | 22,059 | 24,573 | 136,810 | 153,565 | 6.20 | 6.25 |
| TN | 21,156 | 24,836 | 106,345 | 127,265 | 5.03 | 5.12 |
| TX | 53,020 | 58,197 | 278,806 | 307,935 | 5.26 | 5.29 |
| VA | 25,487 | 28,760 | 133,932 | 148,910 | 5.25 | 5.18 |
| WA | * | * | * | * | * | * |
| Oth Sts | 64,597 | 74,975 | 332,845 | 388,314 | 5.15 | 5.18 |
| US | 694,110 | 786,854 | 3,786,441 | 4,319,094 | 5.46 | 5.49 |

* Included in "Other States" to avoid disclosing individual operations.

**Young Chickens Slaughtered: Pounds Certified and Post-Mortem Condemnations
by State and United States, May 2006**

| State | Total Chilled and Frozen Pounds Certified ¹ | | Post-Mortem Condemnations | | | |
|---------|--|---------------------|---------------------------|---------------------|----------------------|----------------|
| | | | N.Y. Dressed Weight | | Percent ² | |
| | April | May | April | May | April | May |
| | <i>1,000 Pounds</i> | <i>1,000 Pounds</i> | <i>1,000 Pounds</i> | <i>1,000 Pounds</i> | <i>Percent</i> | <i>Percent</i> |
| AL | 339,442 | 387,176 | 4,185 | 4,550 | 1.02 | 0.97 |
| AR | 356,285 | 392,425 | 5,093 | 5,126 | 1.17 | 1.07 |
| CA | * | * | * | * | * | * |
| DE | 109,293 | 130,941 | 2,485 | 2,927 | 1.82 | 1.80 |
| FL | * | * | * | * | * | * |
| GA | 390,848 | 441,819 | 3,182 | 3,506 | 0.67 | 0.66 |
| KY | 82,273 | 99,508 | 623 | 848 | 0.62 | 0.69 |
| LA | 65,161 | 75,279 | 592 | 568 | 0.74 | 0.61 |
| MD | 35,775 | 41,657 | 643 | 574 | 1.44 | 1.11 |
| MS | 260,135 | 300,598 | 3,366 | 3,649 | 1.11 | 1.04 |
| MO | 114,153 | 124,765 | 1,134 | 1,116 | 0.81 | 0.73 |
| NJ | * | * | * | * | * | * |
| NY | * | * | * | * | * | * |
| NC | 285,289 | 324,259 | 3,798 | 4,249 | 1.13 | 1.10 |
| OH | 13,684 | 15,915 | 186 | 229 | 1.13 | 1.19 |
| PA | 35,306 | 42,092 | 679 | 899 | 1.54 | 1.71 |
| SC | 102,106 | 114,354 | 661 | 871 | 0.54 | 0.63 |
| TN | 77,786 | 92,983 | 816 | 960 | 0.85 | 0.84 |
| TX | 214,421 | 237,009 | 2,487 | 2,425 | 0.99 | 0.87 |
| VA | 93,946 | 104,654 | 855 | 970 | 0.71 | 0.72 |
| WA | * | * | * | * | * | * |
| Oth Sts | 243,583 | 284,610 | 3,409 | 3,853 | 1.14 | 1.10 |
| US | 2,819,486 | 3,210,044 | 34,194 | 37,320 | 1.00 | 0.96 |

* Included in "Other States" to avoid disclosing individual operations.

¹ Ready-to-cook weights.

² Pounds condemned as percent of equivalent N.Y. dressed weight of quantity inspected.

**Chickens Slaughtered: Number Condemned Post-Mortem by Cause, by Type,
by State and United States, April 2006**

| State | Tuber- culosis | Leukosis | Septicemia | Airsac- culitis | Synovitis | Tumors |
|--------------|-----------------------|-----------------------|-----------------------|-----------------------|-----------------------|-----------------------|
| | <i>Number of Head</i> | <i>Number of Head</i> | <i>Number of Head</i> | <i>Number of Head</i> | <i>Number of Head</i> | <i>Number of Head</i> |
| Young Birds | | | | | | |
| AL | | * | 95,388 | 59,600 | * | 4,671 |
| AR | | 1,334 | 170,052 | 71,542 | 1,856 | 3,921 |
| CA | | * | * | * | * | * |
| DE | | * | 107,635 | 41,401 | * | 6,716 |
| FL | | * | * | * | * | * |
| GA | | 475 | 70,827 | 55,955 | 187 | 6,027 |
| IN | | * | * | * | * | * |
| KY | | * | 30,046 | 11,518 | 22 | * |
| LA | | * | 18,558 | 8,430 | 70 | 365 |
| MD | | * | 30,566 | * | * | * |
| MS | | * | 62,842 | 59,322 | 164 | 1,022 |
| MO | | 601 | 79,723 | 12,028 | 250 | 1,259 |
| NJ | | * | * | * | * | * |
| NY | | * | * | * | * | * |
| NC | | * | 85,153 | 42,199 | * | 7,229 |
| OH | | * | 5,179 | * | * | 64 |
| PA | | 151 | 21,356 | 16,980 | * | 401 |
| SC | | * | * | * | 12 | * |
| TN | | 351 | 55,644 | 23,925 | 122 | 807 |
| TX | | * | 66,355 | 40,407 | 106 | 1,381 |
| VA | | 323 | 43,533 | 24,264 | * | * |
| WA | | * | * | * | * | * |
| Oth Sts | | 49,848 | 212,590 | 79,384 | 3,106 | 17,245 |
| US | | 53,083 | 1,155,447 | 546,955 | 5,895 | 51,108 |
| Mature Birds | | | | | | |
| Light | | 1,812 | 158,762 | 27,487 | 132 | 68,037 |
| Heavy | | 532 | 43,731 | 1,524 | 34 | 6,393 |
| US | | 2,344 | 202,493 | 29,011 | 166 | 74,430 |

See footnote(s) at end of table.

--continued

**Chickens Slaughtered: Number Condemned Post-Mortem by Cause, by Type,
by State and United States, April 2006 (continued)**

| | Bruises | Cadaver | Contam-ination | Overscald | Other | Total ¹ |
|--------------|-----------------------|-----------------------|-----------------------|-----------------------|-----------------------|-----------------------|
| | <i>Number of Head</i> | <i>Number of Head</i> | <i>Number of Head</i> | <i>Number of Head</i> | <i>Number of Head</i> | <i>Number of Head</i> |
| Young Birds | | | | | | |
| AL | 2,541 | 11,658 | 14,708 | 8,916 | 148,558 | 347,506 |
| AR | 4,872 | 16,387 | 31,997 | 6,330 | 139,849 | 448,140 |
| CA | * | * | * | * | * | * |
| DE | 2,163 | 8,129 | 8,464 | * | 38,683 | 260,175 |
| FL | * | * | * | * | * | * |
| GA | 1,843 | 23,083 | 9,593 | 3,096 | 85,313 | 256,399 |
| IN | * | * | * | * | * | * |
| KY | * | 2,926 | 5,280 | * | * | 59,252 |
| LA | 308 | 2,309 | 2,143 | * | 3,759 | 36,020 |
| MD | * | 4,519 | * | * | * | * |
| MS | 1,629 | 4,674 | 4,677 | * | 106,562 | 242,739 |
| MO | 920 | 2,618 | 7,573 | * | * | 163,352 |
| NJ | * | * | * | * | * | * |
| NY | * | * | * | * | * | * |
| NC | 1,826 | 16,064 | 10,977 | 5,989 | 94,502 | 264,631 |
| OH | * | 437 | * | * | * | 14,342 |
| PA | 717 | 2,665 | 6,829 | * | 10,106 | 59,916 |
| SC | 583 | * | * | 2,453 | * | 60,837 |
| TN | 593 | 3,840 | 4,151 | 986 | 9,059 | 99,478 |
| TX | 637 | 2,993 | 6,982 | * | 37,194 | 158,150 |
| VA | 842 | 3,257 | 4,416 | 1,554 | * | 100,953 |
| WA | * | * | * | * | * | * |
| Oth Sts | 4,205 | 15,674 | 37,441 | 13,821 | 281,764 | 539,235 |
| US | 23,679 | 121,233 | 155,231 | 43,145 | 955,349 | 3,111,125 |
| Mature Birds | | | | | | |
| Light | 10,916 | 3,192 | 88,959 | 1,973 | 66,191 | 427,461 |
| Heavy | 957 | 10,200 | 8,157 | 163 | 80,075 | 151,766 |
| US | 11,873 | 13,392 | 97,116 | 2,136 | 146,266 | 579,227 |

* Included in "Other States" to avoid disclosing individual operations.

¹ The sum of the individual diseases does not add across to the total for "Other States".

**Chickens Slaughtered: Number Condemned Post-Mortem by Cause, by Type,
by State and United States, May 2006**

| State | Tuber- culosis | Leukosis | Septicemia | Airsac- culitis | Synovitis | Tumors |
|--------------|-----------------------|-----------------------|-----------------------|-----------------------|-----------------------|-----------------------|
| | <i>Number of Head</i> | <i>Number of Head</i> | <i>Number of Head</i> | <i>Number of Head</i> | <i>Number of Head</i> | <i>Number of Head</i> |
| Young Birds | | | | | | |
| AL | | 236 | 99,985 | 51,728 | 1,055 | 4,961 |
| AR | | * | 182,589 | 66,100 | * | 3,469 |
| CA | | * | * | * | * | * |
| DE | | * | 130,002 | 38,455 | * | 8,738 |
| FL | | * | * | * | * | * |
| GA | | 479 | 77,059 | 51,639 | 284 | 7,409 |
| IN | | * | * | * | * | * |
| KY | | 68 | 39,246 | * | * | * |
| LA | | * | 21,373 | 6,519 | 85 | 537 |
| MD | | 5,392 | 35,688 | * | 40 | * |
| MS | | * | 64,061 | 38,829 | 417 | 929 |
| MO | | 695 | 77,851 | 10,104 | * | 1,321 |
| NJ | | * | * | * | * | * |
| NY | | * | * | * | * | * |
| NC | | * | 88,156 | 40,107 | * | 7,622 |
| OH | | * | 6,706 | * | * | 70 |
| PA | | * | 26,288 | 17,615 | 125 | 352 |
| SC | | 90 | 10,208 | * | 10 | * |
| TN | | * | 56,467 | 22,580 | * | 871 |
| TX | | * | 62,684 | 27,665 | 164 | 1,338 |
| VA | | * | 44,792 | 21,479 | * | * |
| WA | | * | * | * | * | * |
| Oth Sts | | 62,914 | 237,353 | 86,572 | 6,222 | 16,609 |
| US | | 69,874 | 1,260,508 | 479,392 | 8,402 | 54,226 |
| Mature Birds | | | | | | |
| Light | | 1,399 | 161,484 | 28,312 | 76 | 76,805 |
| Heavy | | 625 | 46,644 | 1,729 | 48 | 6,827 |
| US | | 2,024 | 208,128 | 30,041 | 124 | 83,632 |

See footnote(s) at end of table.

--continued

**Chickens Slaughtered: Number Condemned Post-Mortem by Cause, by Type,
by State and United States, May 2006 (continued)**

| | Bruises | Cadaver | Contam-ination | Overscald | Other | Total ¹ |
|--------------|-----------------------|-----------------------|-----------------------|-----------------------|-----------------------|-----------------------|
| | <i>Number of Head</i> | <i>Number of Head</i> | <i>Number of Head</i> | <i>Number of Head</i> | <i>Number of Head</i> | <i>Number of Head</i> |
| Young Birds | | | | | | |
| AL | 2,735 | 13,534 | 17,351 | 14,172 | 162,237 | 367,994 |
| AR | 5,559 | 18,218 | 35,672 | 5,832 | 108,708 | 430,312 |
| CA | * | * | * | * | * | * |
| DE | 2,515 | 7,688 | 9,516 | 3,989 | 38,383 | 292,556 |
| FL | * | * | * | * | * | * |
| GA | 2,268 | 21,518 | 11,191 | 7,661 | 89,599 | 269,107 |
| IN | * | * | * | * | * | * |
| KY | * | 3,102 | 6,005 | 839 | * | 85,331 |
| LA | 358 | 2,296 | 2,440 | * | 2,398 | 36,116 |
| MD | * | 4,659 | * | 390 | * | * |
| MS | 1,895 | 5,637 | 5,754 | * | 97,278 | 216,305 |
| MO | 1,253 | 2,329 | 8,218 | 371 | * | 156,146 |
| NJ | * | * | * | * | * | * |
| NY | * | * | * | * | * | * |
| NC | 1,865 | 16,285 | 11,018 | 8,012 | 111,488 | 285,215 |
| OH | * | * | * | * | * | 17,407 |
| PA | 896 | 3,147 | 7,089 | * | 10,107 | 70,970 |
| SC | 724 | * | * | 4,177 | 43,583 | 76,304 |
| TN | 600 | 4,552 | 4,312 | 1,125 | 7,006 | 97,951 |
| TX | 662 | 2,942 | 7,182 | * | 28,602 | 133,765 |
| VA | 896 | 3,778 | 6,515 | 3,732 | 23,831 | 110,334 |
| WA | * | * | * | * | * | * |
| Oth Sts | 5,096 | 18,393 | 41,162 | 15,406 | 222,368 | 566,708 |
| US | 27,322 | 128,078 | 173,425 | 65,706 | 945,588 | 3,212,521 |
| Mature Birds | | | | | | |
| Light | 10,393 | 4,705 | 94,362 | 916 | 71,860 | 450,312 |
| Heavy | 947 | 9,051 | 7,594 | 369 | 88,807 | 162,641 |
| US | 11,340 | 13,756 | 101,956 | 1,285 | 160,667 | 612,953 |

* Included in "Other States" to avoid disclosing individual operations.

¹ The sum of the individual diseases does not add across to the total for "Other States".

Young Turkeys (Mature) Slaughtered: Number, Live Weight, and Average Live Weight, by State and United States, May 2006

| State | Number Slaughtered | | Live Weight | | Average Live Weight | |
|---------|--------------------|-------------------|---------------------|---------------------|---------------------|---------------|
| | April | May | April | May | April | May |
| | <i>1,000 Head</i> | <i>1,000 Head</i> | <i>1,000 Pounds</i> | <i>1,000 Pounds</i> | <i>Pounds</i> | <i>Pounds</i> |
| AR | 2,478 | 2,812 | 49,102 | 56,048 | 19.82 | 19.93 |
| MN | 2,578 | 3,293 | 70,695 | 90,036 | 27.43 | 27.34 |
| MO | 1,395 | 1,501 | 45,359 | 49,198 | 32.52 | 32.78 |
| Oth Sts | 12,690 | 14,083 | 377,093 | 425,799 | 29.72 | 30.23 |
| US | 19,141 | 21,689 | 542,249 | 621,081 | 28.33 | 28.64 |

Young Turkeys (Mature) Slaughtered: Pounds Certified and Post-Mortem Condemnations, by State and United States, May 2006

| State | Total Chilled and Frozen Pounds Certified ¹ | | Post-Mortem Condemnations | | | |
|---------|--|---------------------|---------------------------|---------------------|----------------------|----------------|
| | | | N.Y. Dressed Weight | | Percent ² | |
| | April | May | April | May | April | May |
| | <i>1,000 Pounds</i> | <i>1,000 Pounds</i> | <i>1,000 Pounds</i> | <i>1,000 Pounds</i> | <i>Percent</i> | <i>Percent</i> |
| AR | 40,372 | 46,095 | 737 | 661 | 1.67 | 1.31 |
| MN | 56,441 | 72,056 | 1,338 | 1,659 | 2.10 | 2.05 |
| MO | 35,841 | 38,665 | 749 | 845 | 1.84 | 1.91 |
| Oth Sts | 297,676 | 335,986 | 5,254 | 5,771 | 1.55 | 1.51 |
| US | 430,330 | 492,802 | 8,078 | 8,936 | 1.66 | 1.60 |

¹ Ready-to-cook weights.

² Pounds condemned as percent of equivalent N.Y. dressed weight of quantity inspected.

**Turkeys Slaughtered: Number Condemned Post-Mortem by Cause, by Type,
United States, April 2006**

| State | Tuber- culosis | Leukosis | Septicemia | Airsac- culitis | Synovitis | Tumors |
|----------------------|-----------------------|-----------------------|----------------------------|-----------------------|-----------------------|-----------------------|
| | <i>Number of Head</i> | <i>Number of Head</i> | <i>Number of Head</i> | <i>Number of Head</i> | <i>Number of Head</i> | <i>Number of Head</i> |
| Young (Mature) US | | 33 | 56,351 | 8,596 | 3,923 | 69 |
| Old (Breeders) US | | 6 | 3,453 | 550 | 2 | 125 |
| | Bruises | Cadaver | Contam- ination | Overscald | Other | Total |
| | <i>Number of Head</i> | <i>Number of Head</i> | <i>Number of Head</i> | <i>Number of Head</i> | <i>Number of Head</i> | <i>Number of Head</i> |
| Young (Mature) US | 531 | 3,415 | 4,344 | 1,713 | 19,680 | 98,655 |
| Old (Breeders) US | 15 | 61 | 213 | 4 | 1,856 | 6,285 |

**Turkeys Slaughtered: Number Condemned Post-Mortem by Cause, by Type,
United States, May 2006**

| State | Tuber- culosis | Leukosis | Septicemia | Airsac- culitis | Synovitis | Tumors |
|----------------------|-----------------------|-----------------------|----------------------------|-----------------------|-----------------------|-----------------------|
| | <i>Number of Head</i> | <i>Number of Head</i> | <i>Number of Head</i> | <i>Number of Head</i> | <i>Number of Head</i> | <i>Number of Head</i> |
| Young (Mature) US | | 68 | 61,280 | 9,720 | 3,638 | 107 |
| Old (Breeders) US | | | 2,873 | 258 | 10 | 80 |
| | Bruises | Cadaver | Contam- ination | Overscald | Other | Total |
| | <i>Number of Head</i> | <i>Number of Head</i> | <i>Number of Head</i> | <i>Number of Head</i> | <i>Number of Head</i> | <i>Number of Head</i> |
| Young (Mature) US | 553 | 4,835 | 4,087 | 2,835 | 24,975 | 112,098 |
| Old (Breeders) US | 41 | 70 | 78 | 32 | 183 | 3,625 |

Poultry Slaughter Estimates

Data Sources: Data for poultry slaughter estimates are collected by inspectors of the Food Safety and Inspection Service (FSIS), USDA for all Federally Inspected (FI) plants. Over 99 percent of the total U.S. slaughter for any species is under FI. The number of head slaughtered daily, by species and class, as well as condemnations and total live and dressed weights are obtained by shift for each plant. Approximately 320 plants slaughtered poultry in the U.S. under Federal Inspection in 2005. Young chickens were killed in 35 states, young turkeys in 24 states.

Revision Policy: Revisions are generally the result of late reports received by FSIS from plants and are usually less than one-half of 1 percent of the preliminary totals. Revisions for the previous month and year-to-date totals are published in each monthly release. Final data are published in the annual summary released in February and reflect any late reports or corrections which occurred after the monthly revisions were published.

Procedures and Reliability: Plant inspectors submit data electronically for each shift a plant operates. An edit provides checks for the detection of errors such as invalid plant information, duplication, and erroneous data. Data are accumulated to monthly totals for this release.

Data for major slaughter plants with missing reports are adjusted prior to publication to assure that all plants slaughtering a significant portion of a specific class are accounted for. Estimates for missing shifts are made only after verifying that the plant was in operation. Adjustments are based on a shift determined to be similar to the one missing. Late reports replace imputed data as they become available. While there is a varying degree of incompleteness from month to month, it has only a minimal impact on the published totals.

Poultry slaughter estimates are based on a census of operating plants and, therefore, have no sampling error. However, they may be subject to errors such as omissions, duplications, and mistakes in reporting, recording, and processing the data. These errors are minimized through strict quality controls in the edit and summarization process, and a careful review of all reported data for consistency and reasonableness.

State data are published for selected states for young chickens and young turkeys. State data are not published if less than three plants operate for a species in a State, or if one plant has 60 percent or more of the total live weight for that species. Data for all states not published are included in the "Other States" category. Also included in this category are data for published states that are confidential (denoted by an *). Data for all states are included in the U.S. totals.

Definitions

Ante-Mortem Condemnations - Birds condemned prior to their entry into the slaughter plant.

Certified Ready-to-Cook - The weight of poultry certified wholesome by inspection after post-mortem condemnation pounds are removed. Ready-to-cook represents poultry meat ready for the marketing channel.

Ducks - Includes all ducks regardless of age and weight.

Fryer-Roaster Turkeys - Young immature birds, usually under 16 weeks of age. Included with young turkeys.

Mature Chickens - Fowl from breeder and market egg flocks and stags and cocks.

New York Dressed Weight - Carcass weight after only feathers and blood are removed. This weight is approximately 90% of live weight.

Old Turkeys (Breeders) - Fully matured birds held for egg production, usually over 15 months of age.

Other Poultry - Includes all other ready-to-cook products which bear the USDA Inspected for Wholesomeness legend.

Post-Mortem Condemnations - Carcasses or parts condemned by the inspector because of disease or mishandling and removed from the slaughter line and destroyed.

Young Chickens - Commercially grown broilers-fryers and other young immature birds such as roasters and capons.

Young Turkeys (Mature) - Young birds grown to a matured market age, about 5 months.

Information Contacts

Listed below are the commodity specialists in the Livestock Branch of the National Agricultural Statistics Service to contact for additional information.

| | |
|--|----------------|
| Dan Kerestes, Chief, Livestock Branch | (202) 720-3570 |
| Darin Jantzi, Head, Poultry and Specialty Commodities Section | (202) 720-3570 |
| David Colwell - Cold Storage | (202) 720-8784 |
| Fleming Gibson - Egg Products, Poultry Slaughter, Catfish Processing, Mink | (202) 690-3237 |
| John Lange - Turkeys Raised, Turkey Hatchery, Catfish Production, Trout Production, Census of Aquaculture | (202) 720-0585 |
| Sharyn Lavender - Layers, Eggs | (202) 720-3244 |
| Jody Roberts - Broiler Hatchery, Chicken Hatchery, Honey | (202) 690-8632 |

ACCESS TO REPORTS!!

For your convenience, there are several ways to obtain NASS reports, data products, and services:

INTERNET ACCESS

All NASS reports are available free of charge on the worldwide Internet. For access, connect to the Internet and go to the NASS Home Page at: www.nass.usda.gov.

E-MAIL SUBSCRIPTION

All NASS reports are available by subscription free of charge direct to your e-mail address. Starting with the NASS Home Page at www.nass.usda.gov, under the right navigation, *Receive reports by Email*, click on **National** or **State**. Follow the instructions on the screen.

PRINTED REPORTS OR DATA PRODUCTS

CALL OUR TOLL-FREE ORDER DESK: 800-999-6779 (U.S. and Canada)
Other areas, please call 703-605-6220 FAX: 703-605-6900
(Visa, MasterCard, check, or money order acceptable for payment.)

ASSISTANCE

For **assistance** with general agricultural statistics or further information about NASS or its products or services, contact the **Agricultural Statistics Hotline** at **800-727-9540**, 7:30 a.m. to 4:00 p.m. ET, or e-mail: nass@nass.usda.gov.

The U.S. Department of Agriculture (USDA) prohibits discrimination in all its programs and activities on the basis of race, color, national origin, age, disability, and where applicable, sex, marital status, familial status, parental status, religion, sexual orientation, genetic information, political beliefs, reprisal, or because all or part of an individual's income is derived from any public assistance program. (Not all prohibited bases apply to all programs.) Persons with disabilities who require alternative means for communication of program information (Braille, large print, audiotape, etc.) should contact USDA's TARGET Center at (202) 720-2600 (voice and TDD).

To file a complaint of discrimination, write to USDA, Director, Office of Civil Rights, 1400 Independence Avenue, S.W., Washington, D.C. 20250-9410, or call (800) 795-3272 (voice) or (202) 720-6382 (TDD). USDA is an equal opportunity provider and employer.