

BLACK SWAN STATE THEATRE COMPANY

# WHEN THE RAINSTOPS FALLING BY ANDREW BOVELL



*When The Rain Stops Falling* was originally commissioned and first produced by Brink Productions in February 2008.

YOUR GATEWAY TO NEW WORLDS



## 29 OCTOBER - 13 NOVEMBER

HEATH LEDGER THEATRE, STATE THEATRE CENTRE OF WA

DURATION: APPROX 1 HR 50 MINS [NO INTERVAL]

Warning: *When the Rain Stops Falling* contains occasional coarse language and adult themes.



**black swan**  
STATE THEATRE COMPANY  
[www.bsstc.com.au](http://www.bsstc.com.au)



Government of Western Australia  
Department of Culture and the Arts



**mix94.5**

**The West Australian**

FRANKLAND ESTATE  
WESTERN AUSTRALIA



Woolworths  
Private Partner

HOLLYWOOD PRIVATE HOSPITAL

PRINCIPAL PARTNER

**RioTinto**

# CAST & CREATIVES

## FEATURING

**Vivienne Garrett** Gabrielle York 50s

**Julia Moody** Elizabeth Law 60s

**Fiona Pepper** Gabrielle York 20s

**Igor Sas** Joe Ryan

**Scott Sheridan** Gabriel Law/Andrew Price

**Steve Turner** Gabriel York/Henry Law

**Alison van Reeken** Elizabeth Law 30s

## DIRECTOR

Adam Mitchell

## ASSISTANT DIRECTOR

Matt Longman

## SET & COSTUME DESIGNER

Bryan Woltjen

## LIGHTING DESIGNER

Trent Suidgeest

## SOUND DESIGNER

Ben Collins

## AUDIO VISUAL DESIGNER

Mia Holton

## MOVEMENT DIRECTOR

Claudia Alessi

## STAGE MANAGER

Anna Dymitr Hawkes

## ASSISTANT STAGE MANAGER

Louise Wardel

## HEAD CUTTER

Mandy Elmitt

## WARDROBE ASSISTANT & DRESSER

Danni Miller

## SET CONSTRUCTION

Artsworkshop

## ASSISTANT STAGE MANAGER SECONDMENT

Natasha Deacon

If you would like to find out more about Black Swan State Theatre Company, visit [www.bsstc.com.au](http://www.bsstc.com.au) and sign up to the mailing list, become our fan on Facebook or follow us on Twitter @BlackSwanSTC.



## THE PLAY OPENS IN ALICE SPRINGS IN THE YEAR 2039, WHERE A FISH FALLS FROM THE SKY AND LANDS AT THE FEET OF GABRIEL YORK.

The fish still smells of the sea. It's been raining for days and Gabriel York is awaiting the arrival of his grown son, Andrew Price whom he hasn't seen since he was seven.

Eighty years earlier his grandfather Henry Law predicted that, in 2039, fish would fall from the sky heralding a great flood that would overcome the human race.

The story takes place between the worlds of Henry Law and Gabriel York - between a prediction in 1959 and its outcome eighty years later. Through four generations of interconnected stories, a multi-layered tale of one family's past, present and future is told. Set in a small claustrophobic 1950s London flat we meet Henry Law, his wife Elizabeth and their son Gabriel Law.

We follow the central journey of Gabriel Law as he leaves London for the windswept and dangerous coast of South Australia's Coorong and into the heart of the Australian desert. He is determined to retrace his father Henry's footsteps in an attempt to solve the mystery of his disappearance when he was only a boy.

At a roadhouse in the Coorong, Gabriel meets a young, vulnerable woman named Gabrielle York. Two damaged souls, sharing the same name, in a wild landscape; their connection is instant and powerful. Gabrielle York joins Gabriel Law on this journey to uncover his father's past.

The young lovers open up to one another and their individual stories unfold. Amidst their blossoming relationship, there are the interweaving narratives of their ancestors and descendants, and we are led back to 2039, to Gabriel York. He arrives home, where he waits with the fish for the arrival of his estranged son. A son who wants to visit him, to know his father and to seek answers on his abandonment and love. A son he knows will want to learn of the past.

But for Gabriel York the past is as mysterious and unexplainable as the fish that fell from the sky.

# Join us for our 2012 Season



Subscribe now for great theatre in 2012 in the Heath Ledger Theatre at the State Theatre Centre of WA! Exclusive subscription booking period open until 6 November 2011. General ticket sales open on 7 November.

Subscribe or request a brochure by phone on (08) 6212 9300 or online at [www.bsstc.com.au](http://www.bsstc.com.au) or pick one up in the State Theatre Centre box office and foyers.

## ANDREW BOVELL PLAYWRIGHT



Andrew Bovell writes for both stage and screen. His plays have won numerous awards in Australia and overseas including the Victorian Green Room, State Premier's and AWGIE Awards. Andrew adapted his stage play *Speaking in Tongues* into the feature film, *Lantana* which premiered at the Sydney Film Festival in 2001 and went on to screen at numerous international film festivals including the Toronto International Film Festival and won awards including Best Screenplay at the London Critics' Circle Film Awards, Best Screenplay Durban International Film Festival, 5 Film Critics' Circle of Australia Awards, including Best Screenplay and

7 AFI Awards including Best Screenplay from an Adapted Source and the Harper's Bazaar Screenwriting Award.

Andrew's other screenwriting credits include: the feature films *Edge of Darkness*, which is a shared writing credit with William Monahan; *Head On*, which he co-wrote with Ana Kokkinos and Mira Robertson and premiered at the 1998 Cannes Film Festival; the original screenplay of *Strictly Ballroom*; the feature film *The Book of Revelation*, which he co-wrote with Ana Kokkinos and premiered at the 2006 Melbourne International Film Festival and also screened at the 2006 Toronto International Film Festival (Visions Section). *Blessed*, which was adapted from the stage play *Who's Afraid of the Working Class?*; *The Fisherman's Wake*, a telemovie in the Naked series for ABC TV in 1996 which was nominated for a 1996 AFI Award and shortlisted in 1997 for Chesterfield Award in the USA and co-winner of an ATOM Award for best Television drama. *Lust*, a telemovie in the Seven Deadly Sins series for ABC TV in 1993; *Piccolo Mondo*, a telemovie in the Six Pack series for SBS TV in 2002 which was nominated for both AFI and AWGIE Awards and *Dogwoman*, a telemovie for Channel 9 in 2000. Andrew is currently adapting John Le Carré's novel *A Most Wanted Man* for director Anton Corbijn and producers Gail Egan and Andrea Calderwood in the UK.

Andrew's plays include: *Holy Day*, which won the Louis Esson prize for Drama at the Victorian Premier's Literary Awards and the AWGIE Award for Best Stage Play in 2002; *Who's Afraid of the Working Class?* (written with Christos Tsiolkas, Melissa Reeves and Patricia Cornelius and Irine Vela). The play was produced by Melbourne Worker's Theatre in 1998 and toured Australia in 1999 and won the major AWGIE Award in 1999 as well as Best Stage Play and the Jill Blewitt Award in 2000, the 1999 Victorian Green Room Award and the QLD Premier's Award for Drama in 1999. *Speaking In Tongues* which has been produced by numerous theatre companies in Australia and a national tour in 2003, 3 seasons in the UK including the West End in 2009, 4 seasons in the US including the Roundabout Theatre in New York and over 40 productions throughout Europe. Andrew's radio adaptation of *Distant Lights From Dark Places* won the Gold Medal for Drama at the New York Radio and Television Festival and the AWGIE Award for Best Radio Adaptation.

***When the Rain Stops Falling*** was a commission by Brink Productions and premiered at the 2008 Adelaide Festival of the Arts, the production transferred to Sydney Theatre Company and Melbourne Theatre Company in 2009 and Queensland Theatre Company in 2010. The play won both Queensland and Victorian Premier's Literary Awards for Best Play and the Adelaide Critics Circle - Individual Award, the 2009 AWGIE for Best Stage Play, Best New Australian Work at the 2009 Sydney Theatre Awards and the Greenroom Award for New Writing for the Australian Stage. The Almeida Theatre in London presented a new production in 2009 and The Lincoln Center in New York presented their own production in 2009 which received 5 Lucille Lortel Awards.

Andrew is currently writing a joint commission for the Steppenwolf Theatre Company in Chicago and The National Theatre in London and has a commission with the Sydney Theatre Company.



## ADAM MITCHELL **DIRECTOR**

**Black Swan:** The HotBed Ensemble: *Yellow Moon: The Ballad Of Leila and Lee, The Shape of Things, pool (no water), The Dark Room, Portraits of Modern Evil, The Caucasian Chalk Circle, The Laramie Project, Falling Petals.* Be Active BSX Theatre: *Heart's Desire.* **Other Theatre:** WAAPA: *The 25th Annual Putnam County Spelling Bee, Beauty and the Beast.* Damage Theatre: *The Brick*

*and the Rose, Kitchen, A Change in the Weather.* Artrage: *Loving the Alien.* Lyons Productions: *The Messenger.* The Cabaret Soiree Series Downstairs at the Maj: *Damaged and Ramblings of a Random Redhead.* The Hayman Theatre: *Away, Attempts on her Life.* **As Assistant Director: Black Swan:** *Uncle Vanya.* **Other Theatre:** Sydney Theatre Company: *True West,* Melbourne Theatre Company: *The Pillowman.* **As Performer:** The Cabaret Soiree Series Downstairs at the Maj: *You Oughta Know.* Edinburgh Festival: *From Sondheim to Sinatra.* Chaplins: *Dick Whittington* (UK National Tour). Artrage: *Lost Hellfire.* Entrophy/Deckchair Theatre: *Under Milk Wood.* **Positions:** Adam was Black Swan's Associate Director from 2007-2010 and the Director of the HotBed Ensemble from 2008-2010. He is a member of the Lincoln Center Theater Directors Lab (New York). **Awards:** 2010 Equity Guild Award for Best Direction and Best Production for *The Shape of Things,* 2008 Equity Guild Award for Best Director for *The Caucasian Chalk Circle* and the 2003 Blue Room Award for Best Independent Production for *The Brick and the Rose.*



We're there  
when you get  
your big break.

Proudly supporting the arts  
in Western Australia

*amazing*

HOLLYWOOD PRIVATE HOSPITAL | ARTS

# A WORD FROM THE DIRECTOR

I FIRST MET PLAYWRIGHT ANDREW BOVELL OVER A COFFEE AT THE END OF LAST YEAR. AT THE TIME I WAS JUST BEGINNING TO INVESTIGATE THE POSSIBILITIES FOR HIS PLAY, AND THERE WERE MANY.

What struck me most about our conversation was how passionately Andrew still felt about his play, even after a long national tour, successful premiere, and numerous productions at the most respected theatre houses internationally, he still cared deeply. Usually a new toy loses its shine after you've played with it for a while.

I can unashamedly say after taking much time and care with our production of *When The Rain Stops Falling*, I feel exactly the same way. The people in this play grow on you. Their honesty and complications are intricate and messy, though it's hard not to get involved.

In the same way, your experience tonight is not straightforward, neat or tidy. It's unruly; it wildly traverses more than 80 years, from London in the 1950s to Alice Springs in the year 2039.

You may not immediately be able to piece together the family tree on display here; certainly the multiple characters of Gabriel and Gabrielle (both younger and older) may keep you busy, though tracking the descendants back and forth in time may be less important than it first seems.

I would like to thank everyone involved in bringing *When The Rain Stops Falling* to life. From the initial experimentations with Set and Costume Designer Bryan Woltjen, to Kate Cherry and Black Swan, to the stage management team and my creatives - all have been stellar. Finally, thank you to my fearless cast, who day after day arrived at rehearsal, stepped up to the edge and threw themselves fearlessly into the maelstrom.

It has been a delirious joy.

**Adam Mitchell**



# THE FAMILY TREE



**HENRY LAW**  
(1928 - ?)



**ELIZABETH PERRY**  
(1932 - 2009)



**GABRIEL LAW**  
(1960 - 1988)





Costume sketches provided by Bryan Woltjen, Set and Costume Designer for *When The Rain Stops Falling*.

**PETER YORK**  
(1939 - 1982)

**GEORGIA BRAY**  
(1940 - 1975)

**GLEN YORK**  
(1960 - 1968)

**GABRIELLE YORK**  
(1963 - 2013)

**JOE RYAN**  
(1963 - ?)

**GABRIEL YORK**  
(1989 - )

**ELIZA PRICE**  
(1994 - )

**ANDREW PRICE**  
(2011 - )



# CAUGHT BETWEEN THE LAND AND THE SEA, IT BELONGS TO NEITHER

Written by Jordan Nix

*“Dear Gabriel, the Coorong is a dangerous place. Caught between the land and the sea it belongs to neither. I miss you. Dad.”*  
– Henry Law

A simple letter sent from Australia reaches a young boy on the other side of the world. Years later that boy will make the same trip his father did in hope of piecing together the missing answers to his life. His experience in the Coorong is as remote, beautiful and dangerous as the place itself.

No deeper than two to three metres, just 5 kilometres wide at the most, but over 100 kilometres long, the Coorong exists as a diverse, yet fragile lagoon ecosystem caught between the land and the sea.

The Coorong National Park is situated 156km southeast of Adelaide. The lagoon is separated from the Southern Ocean by the narrow Younghusband Peninsula, just 350 metres wide at some points. Its name is a corruption of kurangh, a local Aboriginal word meaning long neck which refers to the shape of the lagoon. The major towns in the region include Meningie, Tailem Bend and Tintinara.

*“You know that if you don’t leave here soon you will marry a farmer from Salt Creek.”* – Gabrielle York

In the most isolated and unfamiliar land that Gabriel Law has travelled, he finds a woman desperate to escape a life in the Coorong and Salt Creek. In reality, the blink-and-you’ll-miss-it town of Salt Creek is just two service stations that stand before the most remote southern parts of the Coorong National Park.

The ecosystem depends on both the freshwater from the Murray River and seawater from the ocean. The waters are popular amongst fishers, with species such as the Coorong Mullet and School Mullaway. Rare migratory species such as

the Red-necked Stint have been spotted in the area. The Red-necked Stint weighs about 30g and is small enough to fit into a wineglass. In their lifetime they will fly further than the distance between the earth and the moon.

The Coorong plays host to more than 250 species of birds that migrate from far off places such as Siberia, Alaska and Japan. Yet with such an array of wildlife and beauty, one cannot help but feel overwhelmed by the stillness and isolation of the Coorong. One travel directory lists it as “a place that calms the mind, soothes the soul and appeases the senses”.

*“You can be standing on solid ground then without even noticing, it turns to water beneath you. And if you don’t move, you’ll drown”* – Gabrielle York

The Coorongs original formation dates back 120,000 years but conservative estimates of the modern sand dune system suggest between 6,000 and 20,000 years. Sea levels rose to form an island around the dunes and produce the lagoon.

The last decade has seen a drier climate and climate-change hit the Coorong hard. Water levels dropped and salt levels rose to 6 times that of the ocean. Locals started referring to the area as the Dead Sea. But recently, as if setting the scene for **When the Rain Stops Falling**, heavy rain started to fall and inject new hope into the future of the Coorong.



# ABOUT THE PLAYWRIGHT **ANDREW BOVELL**

Written by Jordan Nix

Andrew Bovell is undeniably one of Australia's most acclaimed and successful contemporary playwrights. His back catalogue proudly lists individual successes such as *Speaking in Tongues*, the collaborative efforts of *Who's Afraid of the Working Class?*, the film adaptations of both of these plays and a co-writing credit for *Strictly Ballroom*.

Born in Kalgoorlie as the only boy among three sisters, the isolation and emptiness of the outback meant Bovell developed a great sense of imagination to pass the time. Growing up with strong and loving females also certainly helped to shape his point of view. It wasn't until he went to university that Bovell went to his first play, Arthur Miller's *The Crucible*.

**When The Rain Stops Falling**, first performed in 2008, is Bovell's latest work in the theatre and one created through an intense collaboration with contemporary artist Hossein Valamanesh, composer Quincy Grant and director Chris Drummond. Titled *The Extinction Project* in its formative stages, it took almost two years of discussion and three full weeks of workshops for Bovell to discover characters, build patterns in narrative, seek out the

truth of the play and push through difficult times.

Bovell was inspired by several outside sources during the creation of this work.

An exhibition in Paris led him to question if the melancholy and sense of despair so strongly felt in the post 9/11 world was in fact a passage to a new way of thinking, a new age of enlightenment. Drummond and Bovell were both fascinated with the pattern of human movement discussed in Tim Flannery's book *The Future Eaters*, describing the ecological history of the Australian continent, but also with what happens if we can't move anymore.

Mentioned in the play, but also part of the larger development of the piece, Spanish artist Goya's painting *Saturn Devouring his Children* which depicts the Greek myth of the Titan Cronus who, fearing that he would be overthrown by his children, ate each one upon their birth, led to a single question: What is the relationship between the past, present and future?

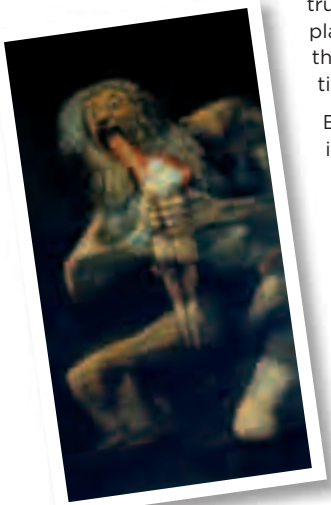
**When The Rain Stops Falling** is Bovell's answer. That answer is a bold piece of theatre that seeks to understand humanity's destructive nature, but also to celebrate strength and compassion.

Two of the play's strongest themes that resonate for Bovell are family and the question of inheriting legacy. And despite a strong sense of self-destruction, troubled legacy and despair, **When The Rain Stops Falling** holds a strong beacon of light. Bovell says no matter how bad the past is, we can leave it behind and change the future.

## References taken from:

[http://www.mtc.com.au/uploadedFiles/Plays\\_and\\_Tickets/%28Reviews%29/Rain%20Essay%20HR%281%29.pdf](http://www.mtc.com.au/uploadedFiles/Plays_and_Tickets/%28Reviews%29/Rain%20Essay%20HR%281%29.pdf)

<http://www.smh.com.au/news/entertainment/arts/it-never-rains-it-pours/2009/04/17/1239475045177.html?page=fullpage#contentSwap2>

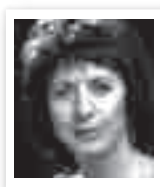


Goya, *Saturn Devouring his Children*, 1819-1823



## VIVIENNE GARRETT **GABRIELLE YORK 50s**

**Black Swan:** *The Clean House, Life x 3, Live Acts on Stage, Black Rock, Burning Time, Darling Oscar.* **Other Theatre:** Perth Theatre Company: *The Vagina Monologues, An Oak Tree, Equus, Brilliant Lies, The Popular Mechanicals.* The Brainbox Project/Downstairs at His Maj: *Lebensraum, Maj Monologues.* Deckchair Theatre: *Emma, Checklist for an Armed Robber, The Lonely Hearts Club.* West Australian Theatre Company: *Europe, Rough Crossing* and many more. Malthouse/Darlinghurst Theatre: *Necessary Targets.* Wilton Morley/MTC: *Dusa, Fish Stas and Vi* (Australian tour). Sydney Theatre Company: *The Crucible, Lady of the Camellias, Extremities.* Nimrod Theatre: *On Our Selection, Top Girls, A Servant of Two Masters.* Jane Street Theatre: *As You Like It, The Dybukk, Mariner, Muriel.* Vivienne has worked extensively throughout Australia in many Shakespearean productions such as *Measure For Measure, The Taming of the Shrew, Hamlet* and was a member of The Performance Syndicate devising original work, where she performed in *Shakuntala* for the Adelaide Arts Festival. **TV:** *No 96, Homicide, Matlock Police, Mother and Son, The Norman Gunstan Show, Bodyline, Street Smartz, Haydaze, Ship to Shore, Minty.* **Positions:** Has taught Acting at WAAPA, ECU, Notre Dame, NIDA and TAFTA. **Other:** Directed 26 short stories for ABC Radio National and *The Spook* at PICA. Performed two one woman shows, *Death of Minnie* and *Witchplay.* Vivienne is a voice-over artist and a proud member of Equity. **Awards:** NIDA awards, Swan Gold Award for Best female actor for *Dead Funny.*



## JULIA MOODY **ELIZABETH LAW 60s**

**Black Swan:** *The Memory of Water.* **Other Theatre:** Onward Production: *The Deep Blue Sea.* Melbourne Theatre Company: *Educating Rita.* Company B: *Pallas, Walking Long Country.* Deckchair Theatre: *The Removalists.* Theatre South: *Europe, Daylight Savings.* Perth Theatre Company: *The Mule's Foal, Soul Mates.* WA State Theatre Company: *Sweeney Todd, The Last Wake at Sheoak Creek.* Hole in the Wall Theatre Company: *Educating Rita, Virginia, Approaching Simone, Visions.* **TV:** *Rafferty's Rules, Sons and Daughters.* **As Voice Dialect Coach:** **Black Swan:** *Madagascar, The Clean House, The Glass Menagerie, The Laramie Project.* **Other Theatre:** Perth Theatre Company: *The Matchmaker.* Julia also works as a voice consultant for SBS TV and Radio, and many other corporations, organisations and individuals. **Positions:** Head of Voice in the Acting Department at WAAPA. Board member of the Australian Voice Association. Associate teacher at Fitzmaurice Voicework. **Other:** Julia is a proud member of Equity. **Training:** Bristol Old Vic Theatre School, and NIDA (Grad Dip in Voice Studies).



## FIONA PEPPER **GABRIELLE YORK 20s**

**Black Swan:** *When The Rain Stops Falling* marks Fiona's debut with the Company. **Other Theatre:** Mess Hall: *Sweet Bird and Soforth.* Perth Theatre Company: *The Removalists.* Bell Shakespeare: *Actors at Work.* New Theatre: *The Herbal Bed.* PIAF: *Don't Look Back.* **Film:** *Go the Highway* (short film), *Problems with a Girl and a Unicorn* (short film), *Macadamia* (short film), *Background Noise* (short film). **Training:** WAAPA graduate (Acting). Ecole Philippe Gaulier.



## IGOR SAS **JOE RYAN**

**Black Swan:** *The Female of the Species, Zastrozzi - Master of Discipline, Art, A Man With Five Children.* Black Swan/Melbourne Theatre Company: *The Swimming Club.* Black Swan/Hothouse: *The Web.* Black Swan/Thinlice: *The Gathering.* **Other Theatre:** Thinlice: *The Red Shoes.* Thinlice/Malthouse/Sydney Theatre Company: *The Trial.* Perth Theatre Company: *Soulmates, Stories from Suburban Road.* Effie Crump Theatre: *Below.*

State Theatre Company of Western Australia: *The Voyage of Vasco Pyjama, Man, Beast and Virtue.* State Theatre Company of South Australia: *The Blind Giant is Dancing, The Conquest of Carmen Miranda, Golden Valley.* **TV:** *Lockie Leonard, Three Acts of Murder, Parallax, Ship to Shore.* **Film:** *Drift, Needle, Japanese Story, Teesh and Trude, Justice.* **Other:** Igor is a proud member of Equity.



## SCOTT SHERIDAN **GABRIEL LAW/ANDREW PRICE**

**Black Swan:** *A Midsummer Night's Dream.* **Other Theatre:** Darlinghurst Theatre: *Drake the Amazing.* Bell Shakespeare: *Actors at Work.* PIAF: *Don't Look Back.* **TV:** *AE2 Gallipoli Submarine.* **Film:** *Careless Love, Sorrento, What You Are Missing.* **Other:** Scott was involved in various script developments with Bell Shakespeare and Deckchair Theatre. Scott has been a proud member of Equity since 2009. **Training:** WAAPA graduate, 2009.



## STEVE TURNER **GABRIEL YORK/HENRY LAW**

**Black Swan:** *Twelfth Night, Much Ado About Nothing, The Glass Menagerie, The Crucible, The Carnivores.* Black Swan/Happy Dagger Theatre: *Cyrano de Bergerac.* Black Swan/Bunuba Films: *Jandamarra.* **Other Theatre:** Kay and McLean Productions: *The Graduate.* Perth Theatre Company: *Speed-the-Plow, The Turning, Tango, Talk About The Passion, Relatively Speaking, Italian American Reconciliation.*

Deckchair Theatre: *Modern International Dead, Grace, Much Ado About Nothing, The Comedy of Errors, Twelfth Night, Bell in the Storm.* company M: *The Gun, Luv Struk, Bone Dry, Road Train, Jeepers Creepers.* The Blue Room: *October, Killer Joe.* **Positions:** Founding member of company M. **Other:** Steve has been a proud member of Equity since 1987. **Awards:** 2001 WA Equity Guild Award for Best Actor for *To Whom It May Concern* and the 2002 WA Equity Guild Award for Best Actor for *Below.* In 2007 Steve was given WA Equity Guild Award Members Choice for *The Crucible.*



## ALISON VAN REEKEN **ELIZABETH LAW 30s**

**Black Swan:** *A Midsummer Night's Dream, The Female of the Species, Life x 3, The Crucible, Woyzeck, The Carnivores, A Man with Five Children.* **Other Theatre:** Metcalfe Playhouse: *When Dad Married Fury.* Onward Production: *The Deep Blue Sea, Seven Deadly Sins, Four Deadly Sinners.* Kay and McLean Productions: *The Graduate.* Perth Theatre Company: *An Oak Tree, The Turning,*

*Charitable Intent.* Red Ryder Productions: *Dying City, A Moment on the Lips.* Class

Act: *Twelfth Night*. Renstar: *She Told Me So*. Darlinghurst Theatre: *Five Stories High*, *The Treatment*, *Etta Jenks*. Old Fitzroy Theatre: *Dogs Barking*, *Paradise*. Belvoir St Theatre Downstairs: *Chambres*, *An Idiot Amongst Us*, *Edmund*. **TV:** *Three Acts of Murder*, *Sleepover Club*, *Murder Call*, *All Saints*, *Water Rats*. **Film:** *Middle Children*, *All the Way*. **As Producer:** *Dealer's Choice*, *The Mozart Faction*, *Loveplay*, *Looming the Memory*, *Dying City*. **Other:** Alison has been a proud member of Equity since 1996. **Awards:** Best Supporting Actor (Female) 2006 Equity Guild Award. **Training:** Diploma of Performance Studies (Theatre) from WAAPA and Curtin University.



## MATT LONGMAN ASSISTANT DIRECTOR

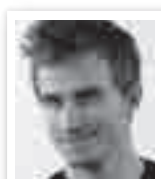
**As Actor:** **Black Swan:** Be Active BSX Theatre: *A Heart's Desire*. **Other Theatre:** Class Act: *Romeo and Juliet*. Playlovers: *The Talented Mr Ripley*. GRADs: *A Winter's Tale*, *Three Sisters*, *The Merchant of Venice*. The Old Mill: *Hamlet*. Deckchair Theatre/Longwood: *Forget Me Not*. **As Director:** Playlovers: *The Pillowman*. Blakyak: *A Lie of the Mind*. The Old Mill: *After Dinner*. **As Assistant Director:** The Old Mill: *Hamlet*. Barking Gecko: *Aesop's Fables*. **Training:** WAAPA graduate (Acting).



## BRYAN WOLTJEN SET & COSTUME DESIGNER

**Black Swan:** *Ninety*, *Cyrano de Bergerac*, *Far Away*, *Who's Afraid Of Virginia Woolf?*, *The Messiah*, *The Lady Aoi*, *Accidental Death of an Anarchist*, *X-Stacy*. Be Active BSX: *Striptease/Mountain Language*, *The Visit*. Black Swan/Hothouse: *The Web*. **Other Theatre:** PIAF: *The Flowering Tree*. Barking Gecko: *Fatty Wombat*, *The Littlest Bird*, *Trains of Thought*, *The Lost Girl*. Deckchair Theatre: *The Modern International*

*Dead*, *Twelfth Night*, *Wonderlands*. Thinlce: *Antigone*, *Bed*, *The Gathering*. Gossips' Feast: *Construction of the Human Heart*. **Design and Puppetry Design:** Spare Parts Puppet Theatre: *Grendel and the Gladiator*, *Muttaborrasaurus*, *The Mary Surefoot's Shoe Collection*. **Other:** Creative Development Facilitator. Sessional Lecturer in Design at WAAPA since 2007. Asia-Link Residency in India, 2007-2008. **Awards:** 2009 Equity Guild Award Best Designer for *Far Away*, 2005 WA Equity Guild Award Best Designer for *The Visit*, 2002 WA Fringe Festival Award for Best Visual Design for *Return to Sender*, 1993 Mary Durack Award for Young Writers. **Training:** Bryan is a 1998 WAAPA graduate in Production and Design (Design).



## TRENT SUIDGEEST LIGHTING DESIGNER

**Black Swan:** *Ninety*, *A Midsummer Night's Dream* (with Graham Walne), *The Sapphires*. The HotBed Ensemble: *pool (no water)*, *The Dark Room*.

**Other Theatre:** Yirra Yaakin: *Waltzing The Wilarra*. The Production Company: *Kismet*, *The King and I*. Barking Gecko: *The Amber Amulet*, *Fatty Wombat*. Steps Youth Dance: *Compact Dance*, *moonwebs* & *scorched thongs*. Perth Theatre Company: *An Oak Tree*. JANUS

Entertainment: *When Dad Married Fury*, *Oklahoma!*, *Her Holiness*. MS Society of WA: *Puss In Boots*, *The Sound of Music*. Buzz Dance Theatre: *Genie(us)*. Crow Crow Productions: *Flightfall*. Prickly Pear Ensemble: *The Enchanters*, *R+J*. **Secondments:** *Billy Elliot The Musical* (Broadway), *High School Musical* (Australian Tour), *Wicked* (Australia). **Workshops:** A conversation about Light with Rick Fisher. **Positions:** WA Department of Culture and the Arts Young People and the Arts Funding Panelist 2009-2011, YCulture Metro Funding Panelist 2009, WAAPA Board 2007-2008. **Training:** WAAPA graduate, 2008.



## BEN COLLINS **SOUND DESIGNER**

**Black Swan:** *Cat on a Hot Tin Roof, Ninety, Madagascar.* The HotBed Ensemble: *pool (no water), The Dark Room.* Black Swan/Onward Production: *Seven Deadly Sins, Four Deadly Sinners.* **Other Theatre:** The Hayman Theatre: *Attempts on Her Life.* **As Sound Editor:** **Black Swan:** *The Swimming Club.* **Film:** *The Expert, Happy Haven, Eternus, DOX, Miss Coolbaroo, Time Enough, The Adjuster.* **Other:** Ben has composed for

the West Australian Youth Jazz Orchestra, Mace Francis Orchestra and St Hilda's Concert Orchestra and played Saxophone in Black Swan's production, *The Sapphires*. Mixed Media Dance Project: *Reality In a Box.* Buzz Dance: *Behind the Veneer.* Ben has performed with many artists including James Morrison, Don Burrows, Tommy Tycho, Ben Folds, Peter Farnan, Rob Guest, Anthony Warlow, Lesley Garrett, Grace Knight, Pete Murray, Christine Anu and Casey Donovan. **Awards:** 2008 WA Screen Award for Best Original Score for *Dox*, 2004 WA Youth Jazz Orchestra Award for Scholarship for Contribution, 2004 Jaxter Artist Award in the Jazz Category for *Big Mama Nelson.* **Training:** WAAPA graduate, 2003.



## MIA HOLTON **AUDIO VISUAL DESIGNER**

**Black Swan:** *The Damned.* The HotBed Ensemble: *Yellow Moon: The Ballad of Leila and Lee, The Shape of Things.* **Other Theatre:** State Theatre Centre of WA: *Gala Opening.* Metro Arts, Brisbane Festival: *Under the Radar.* Yirra Yaakin: *If I Drown I Can Swim.* Deckchair Theatre: *The Bridging Project.* The World Expo in Spain: *Bridging Puentes 2008.* PICA: *Phaedra's Love.* The Bakery, Artrage: *Corazon*

*de Vaca (A Cow's Heart).* Spectrum Project Space: *The Riddle of the Sphinx, Urban Dreaming, Tears of Blood.* **As Editor:** **Film:** *Strapped* (short film). **Other:** Artist in residence at Rorelson choreographic centre Malmö, Sweden 2010. Founding member of CdV (Corazon de Vaca), a contemporary theatre company formed in 2005. **Awards:** Best Electronic Artist, SoCA 2006. **Training:** SoCA Graduate 2006. B.A. in Visual Arts at Edith Cowan University, 2004.



## CLAUDIA ALESSI **MOVEMENT DIRECTOR**

**Black Swan:** *The Clean House, The Swimming Club, The Lady Aoi, The Crucible.* The HotBed Ensemble: *Yellow Moon: The Ballad of Leila and Lee, pool (no water), The Caucasian Chalk Circle.* **As Choreographer and/or Performer:** Claudia has worked with Chrissie Parrott Dance Company, skadada, Sydney Theatre Company, West Australian Opera and in collaboration with Leigh Warren's

Australian Dance Theatre, Foundation Jean-Pierre Perreault of Canada, Fieldworks Performance Group, Shadow Industries Theatre, Spare Parts Puppet Theatre, Media Lab France, Thwack Dance Company, Co Loaded, Plasticien Volants of France, Legs On The Wall, Australian Dance Theatre, STRUT dance and Steamworks. Has produced and performed in her own works, *Point of Entry, 4by2 A Series of Encounters and Twisting the straight line.* **Positions:** Lectures at WAAPA and choreographs, conducts master classes and directs for various institutions, events and festivals throughout Australia. Claudia is currently co-vice president for Ausdance National.

# ABOUT BLACK SWAN STATE THEATRE COMPANY



**black swan**  
STATE THEATRE COMPANY

BLACK SWAN STATE THEATRE  
COMPANY IS WESTERN  
AUSTRALIA'S FLAGSHIP  
THEATRE COMPANY AND ONE  
OF AUSTRALIA'S FOREMOST  
THEATRE COMPANIES.

Since its inception in 1991, Black Swan has earned both critical and popular acclaim for its world premiere productions and highly distinctive (re)interpretations of international theatre classics – all of which are infused with the unique culture of Western Australia. These have included such landmark productions as *Bran Nue Dae*, *Sistergirl*, *Tourmaline*, *Corrugation Road* (winner of the prestigious The Age Critics' Award), *The Merry-Go-Round in the Sea*, *Cloudstreet* (Perth, Sydney, London and Dublin seasons) *The Odyssey*, and most recently *Boundary Street* and *Rising Water*.

As State Flagship Theatre Company, Black Swan presents a broad ranging programme including the creation of new work, contemporary international works and reinterpretations of classic plays that reflect life in Western Australia. Our vision is for Black Swan to be at the forefront of Australian theatre, earning critical acclaim, attracting capacity audiences and offering our diverse community rich, meaningful theatre experiences. Black Swan aims to produce theatre of exceptional quality that celebrates life, while entertaining and enriching the hearts and minds of Australians.

Under the leadership of Artistic Director, Kate Cherry, Black Swan has also created the Rio Tinto Black Swan Commissions, a new commissioning program investing into WA's creative future and showcasing Western Australian stories. The Rio Tinto Black Swan Commissions is an initiative that is unique amongst Australian state theatre companies.

The Company also runs a professional development program for emerging Western Australian artists.

Black Swan State Theatre Company has been a Resident Company in the new State Theatre Centre of Western Australia for almost a year now. In 2011 we opened your gateway to other worlds, with new works and classics. The season began with the world premiere of ***Boundary Street*** by Reg Cribb. Then came the enchanting and fantastical world of William Shakespeare's ***Midsummer Night's Dream***. Another world premiere followed with Tim Winton's first work written for the stage, ***Rising Water*** and next was Tennessee Williams' American classic ***Cat on a Hot Tin Roof***. Concluding the mainhouse season is Andrew Bovell's epic and spellbinding, ***When the Rain Stops Falling***.

The Studio Underground season kicked off with the West Australian premiere of Joanna Murray-Smith's intimate, moving and witty play ***Ninety***. Following this was ***The Damned*** by Reg Cribb, a new play exploring youth alienation.

2012 will be Black Swan's 21st Birthday, and we have chosen to celebrate our coming of age. We look forward to sharing more exciting theatre with you in 2012! For more information, visit [www.bsstc.com.au](http://www.bsstc.com.au).



# BLACK SWAN'S EMERGING ARTISTS PROGRAM

OVER THE PAST YEARS, BLACK SWAN'S EMERGING ARTIST DEVELOPMENT PROGRAM HAS BEEN HIGHLY SUCCESSFUL IN PRESENTING CUTTING-EDGE EXTANT WORK AND ATTRACTING YOUNGER AUDIENCES TO THE STUDIO SPACE AT PICA.

The program has also been highly successful in identifying talented designers that have subsequently made the leap to work on Black Swan's mainstage productions.

In 2011, Black Swan expanded its emerging artist development program to operate across studio and mainstage productions, enabling the Company to work with a growing number of emerging artists and offer them a broader learning experience.

All emerging artists became Associate Artists of Black Swan State Theatre Company for the calendar year, highlighting the importance of these artists to Black Swan.

Associate Artists included emerging designers, directors, writers and actors who will work closely with each other and more experienced artists throughout the year,

giving them an opportunity to experiment and develop their skills. Workshops run by established creatives, performers or visiting artists were offered to Associate Artists several times throughout the year. Black Swan will also assist in establishing mentoring relationships.

The majority of Associate Artists in each year will be under the age of 30 or in their first five years of practice. In 2011, twenty Associate Artists participated in the program, three of which are involved in ***When The Rain Stops Falling***.

For more information, visit [www.bsstc.com.au](http://www.bsstc.com.au).

The Associate Artists program is supported in part by the **McCusker Charitable Foundation**.



**WorleyParsons**

resources & energy

Playing a leading role in  
engineering and project  
delivery services around  
the globe

Proud Cast Partner to Black Swan State Theatre Company for 2011

# RIO TINTO BLACK SWAN COMMISSIONS



PART OF BLACK SWAN STATE THEATRE COMPANY'S ROLE AS WESTERN AUSTRALIA'S FLAGSHIP THEATRE COMPANY IS TO ENGAGE AUDIENCES ON A PROFOUND LEVEL BY CELEBRATING AND PROMOTING WESTERN AUSTRALIA'S CULTURAL IDENTITY.

Black Swan aspires to create beautifully crafted stories that matter to Western Australians and are seen throughout Australia. Our brand of dynamic contemporary theatre aspires to promote Western Australian theatre artists as an integral part of the national cultural agenda through co-productions, tours and the creation of new work. Our commissioning program enables us to contribute to the national canon through plays we have developed and produced at Black Swan State Theatre Company.

The Rio Tinto Black Swan Commissions are unique in Australia. Through collaboration with our Principal Partner, Black Swan has created a research and development wing of the company that offers commissions, dramaturgy and workshops for new work. The new work that is created through the commissioning program takes various forms. Sometimes writers are offered a commission because we would like to see how they intend to develop an idea that intrigues us or because we would like to foster an ongoing relationship with the playwright and we want them to continue writing. Occasionally, Black Swan offers a substantial commission to a writer of national stature to deliver a script that we are convinced, based on the writer's track record, will go straight to the main stage.

So far the Rio Tinto Black Swan Commissions have produced two mainstage works: Kate Mulvany's *The Web* (2009) and *The Swimming Club* by Hannie Rayson (2010). A third commissioned play, *The Damned* by Reg Cribb, received its world premiere in October in the Studio Underground. Writers currently under commission include Reg Cribb, Matt Dyktynski, Aidan Fennessy, Hellie Turner and Hilary Bell. We look forward to sharing the fruits of their work with you over the coming years!

*Kate Cherry*



# PRIVATE GIVING 2011

## PATRONS

Founding Patron, **Janet Holmes à Court AC** has played a significant role in assisting young Western Australians by giving annually to support Black Swan's commissioning program which helps promote its educational activities. Her generosity and support over many years is highly appreciated and has provided a platform for the future development of Black Swan and the overall theatre experience.



Patron **Sally Burton** is passionate about the arts and by supporting Black Swan, plays an important role in securing the future of theatre in WA. She appreciates that the creative vision of WA talent can only be brought to life with support from the generous people of Western Australia.



The generous contribution of **Andrew and Nicola Forrest** to Black Swan is assisting our future development and security as Western Australia's State Theatre Company. Their support will underpin the future growth and development of Black Swan's core artistic program and help retain our local artists in WA.

## BLACK SWAN'S BOARD

Black Swan wishes to thank the following Board members, who have generously committed to donating and showing outstanding leadership in their commitment to private giving to the performing arts.

Andrew Drayton & Alecia Benzie  
Alan Cransberg  
Rob McKenzie  
Kate O'Hara

Vicki Robinson  
Alan Robson AM  
Sam & Leanne Walsh  
Craig Yaxley

## FOUNDATIONS

### McCusker Charitable Foundation

Black Swan is extremely grateful to the McCusker Charitable Foundation for their generous gift towards a new program in 2011, providing the opportunity for emerging artists to develop their careers in WA.

### McCusker Charitable Foundation

#### Sidney Myer Fund

Black Swan would also like to acknowledge the generosity of the Sidney Myer Fund in supporting the Emerging Artists program in 2011.



## LOCAL LARRIKINS

Local Larrikins is an initiative founded by Janet Holmes à Court AC supporting a Western Australian focused production each year. The group also aims to engage young Western Australians with the theatre. In 2011, Local Larrikins contributed towards Tim Winton's debut play, *Rising Water*.

## WHITE SWANS

The White Swans group has been developed by Michela Fini, Sandy Honey and Sallie-Anne Manford in order to support a high profile artist being involved with a production in Perth. White Swans have the chance to enrich Perth's growing enthusiasm for the arts by highlighting the great level of talent, excitement and potential of WA theatre. The inaugural members are:

- The inaugural members are:
- Janet Holmes à Court AC
  - Geoff & Allison Barr
  - Peter & Sue Blackmore
  - Doug & Dallas Buckley
  - Bill Bloking & Debbie Cozart
  - Tim & Ella Dachs
  - Peter & Benita Dowding
  - Maggie Down & David Cruise
  - Mariella Harvey-Hanrahan & Paul Hanrahan

- Stephen & Kelly Maloney
- John McGlue & Sharon Dawson
- Kate O'Hara
- John Poynton & Dianne Bain
- Tim & Chris Ungar
- Cally Unsworth & Rolly Hill
- Sandy White & Chris Binks
- Terri-ann White
- Tony Wilkie

- Katrina & Craig Burton
- Mary & John Caporale
- Debbie & Peter Chappell
- Linda & Warren Coli
- Joanne & Camillo Della Maddalena
- Ash & Clive Donner
- Marco D-Orsogna
- Sally & Giles Everist
- Michela & Adrian Fini
- Annie & Brett Fogarty
- Nicola & Andrew Forrest
- Janine & Richard Goyder
- Sandy & Peter Honey
- Christine & John Hedges
- Stephanie & Peter James
- Peter Lee & Shareen Traub

- Heather Lyons & Marijana Ravlich
- Sandy & Michelle Mackellar
- Sallie-Anne & Michael Manford
- Dr Toby and Tony Manford
- Sue McDonald & Mike Westbrook
- Chris & Bruce McLeod
- Rose & Tim Moore
- Mimi & Willy Packer
- Phillipa & Ron Packer
- Ingrid & Mark Puzey
- Veronique & Kim Ramen
- Wiggy Saunders & Mark English
- The Hon. Linda Savage MLC
- Dee & Gary Seabrook
- Natasha & Ross Taylor
- Debbie & Joe Throsby
- Julie & Eddie Van Beem

## ENCORE!

Encore! is Black Swan's general giving program. Encore! gives you the opportunity to help Black Swan deliver high quality productions in 2012.

Thank you to the following people who have kindly donated to Black Swan's giving program - Encore! to support the 2011 season.

### Encore! \$10,000 and above

- Janet Holmes à Court AC
- Sally Burton
- McCusker Charitable Foundation
- Sidney Myer Fund

- Paul Mar
- Michael Murphy & Craig Merrey
- Veronica & Michael Nicholls
- PwC
- Thurston Saulsman
- The Hon. Linda Savage MLC

- Kaye Dransfield
- Shirley Egan
- Des Gurry
- N. Hansen
- Pam Harling
- Joscelyn Leatt-Hayter
- Margot Lipa
- Deborah Luke
- Margaret McKenna
- Ross McLennan
- Margaret Medcalf
- Terence Middleton
- Frances Moon
- Roger Mullen
- Anthony Munro
- Delys Newman
- James Pearson
- Jennifer Rove
- Sandra Napier & Michael Ryan
- Carol Shannon
- Geoffrey Shaw
- Lindsay Silbert
- Jeffrey Skates
- Maureen Smith
- Ross Symonds
- Challis Tilbrook
- Joy Wearne
- Charlotte Welton
- Christopher Wray
- Don Young
- David Zalsman

### Applause \$5,000

- The Stan Perron Charitable Trust

### Opening Act \$2,500

- Walter Millstead
- Natasha & Ross Taylor
- Rick Crabb

### First Call \$1,000 to \$2,499

- Shane Colquhoun & Leigh Cathcart
- Paul Chapman
- Andrew Crocker
- David Doepel
- Trevor & Judy Eastwood
- Sally & Giles Everist
- Warwick Hemsley

### Behind The Scenes \$500 to \$999

- Sue Boyd
- Keith & Frauke Chambers
- Gordon & Nena Johnston
- Fred & Berryl Lawrence
- Zoe Lenard
- Gary Marsh
- Andrée McIntrye
- Graeme Murphy
- Garnett Skuthorpe
- Peter Watson

### \$50 to \$499

- Phillipa Barnard
- Cameron Blythe
- Elsje Burggraaf
- Katherine Cheng
- Peter & Lesley Davies
- Stephen Dennis

To become part of Encore! please visit our website at [www.bsstc.com.au](http://www.bsstc.com.au)

# PRIVATE GIVING 2011

## BEQUESTS

Leaving a bequest marks your meaningful bond to the theatre, and your belief in the future of Western Australian art and culture. Your bequest is a truly enduring way to ensure that younger generations are able to experience and enjoy the thrill of stage performance.

## PLAYING YOUR PART

If you are interested in supporting Black Swan, please contact our Fundraising Manager, Andree McIntyre on [andree@bsstc.com.au](mailto:andree@bsstc.com.au) or (08) 6212 9300.

Donations are tax deductible and you can remain anonymous and/or keep your gift amount undisclosed.

## ACKNOWLEDGEMENTS

Black Swan State Theatre Company would like to acknowledge the Wadjuk people from the Noongar nation who are the traditional owners and custodians of this land. We pay respect to the Elders; for they hold the history, the cultural practice and traditions of their people. It is a privilege to be together on Noongar country.

Black Swan State Theatre Company would like to thank Artsworkshop, Brian Heller and The Arts Angels, Jordan Nix, Andrew Hill and Cathy Penglis. Black Swan greatly appreciates the help of Malthouse Brew Supplies.

Black Swan would also like to thank Brendon Ellmer, Alice Jorgensen and all staff at the State Theatre Centre of Western Australia for their support and assistance during 2011.

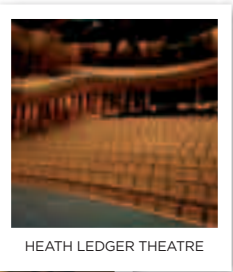


# GET ACQUAINTED WITH YOUR STATE THEATRE CENTRE!

THE STATE THEATRE CENTRE OF WESTERN AUSTRALIA IS AN ARCHITECTURAL DELIGHT LOCATED IN THE HEART OF PERTH. AS A NEW VENUE, WE WOULD LIKE TO PROVIDE YOU WITH SOME INFORMATION TO BECOME BETTER ACQUAINTED WITH IT.

## BOX OFFICE

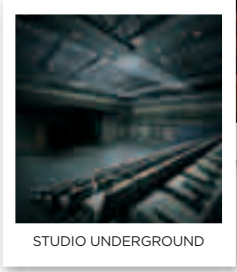
The State Theatre Centre is also a BOCS Ticketing outlet. The box office is located on the ground floor and is open from 10am to 6pm Monday to Friday, 10am to 4pm on Saturdays and is closed on Sundays except on performance days. The box office is also open one hour prior to performances for collection of pre-purchased tickets.



HEATH LEDGER THEATRE



HEATH LEDGER THEATRE FOYER



STUDIO UNDERGROUND



THE COURTYARD

Venues with a difference



HIS MAJESTY'S THEATRE ■ PERTH CONCERT HALL  
STATE THEATRE CENTRE OF WA ■ SUBIACO ARTS CENTRE  
ALBANY ENTERTAINMENT CENTRE

## LICENSED BAR AND FUNCTION FACILITIES

The Centre features a number of licensed bar and function facilities. The Heath Ledger Theatre has two bars, the Heath Ledger Theatre Main Bar and the smaller D-Bar. The Studio Underground features one bar. Bars open 1 hour before, during interval and after each major performance.

To save time and skip the queues, you can even pre-order your interval drinks before the show so you can relax and enjoy the whole interval. To pre-order interval drinks, ask any of the Centre's bar staff to complete a form at the venue.

## ACCESSIBILITY

Wheelchair seating is available in the Heath Ledger Theatre and the Studio Underground. Lifts at the rear end of the Centre service both the Heath Ledger Theatre and Studio Underground. The Centre is equipped with an infrared hearing system for deaf and hearing impaired patrons. An Audio Description Service for blind or vision impaired patrons is also offered for certain performances. Please inform BOCS Ticketing or the Centre's box office staff if any assistance is required.

## GETTING TO THE VENUE

### PARKING

There are several car parking locations in close proximity to The Centre. These include:

- State Library Car Park, 15 Francis Street. 7 ACROD bays. Prepaid parking is available after 6pm.
- Cultural Centre Car Park, 2 Roe Street. 4 ACROD bays. Prepaid parking is available after 6pm. The car park will be opened late on performance nights.
- Roe Street Car Park, 68 Roe Street. 5 ACROD bays
- Wilson Parking, 18 Roe Street.

Visit the City of Perth website for more information on rates and opening and closing times.

## RAIL & BUS

The State Theatre Centre is directly opposite and easily accessed from the Perth train station.

Transperth's Blue CAT buses travel from the Barrack St Jetty to Northbridge. The closest pick-up and drop-off points to the State Theatre Centre are Beaufort Street (stop 7) and James Street (stop 14).

For more information on routes, timetables and services contact Transperth's InfoLine on 13 62 13 or visit the Transperth website, [www.transperth.wa.gov.au](http://www.transperth.wa.gov.au).

## TAXIS

Pick up and set down only points are available outside the State Theatre Centre on William Street. This area is also classed as a Taxi Zone when not being used for parking.

Further taxi ranks are situated at:

- Perth City Rail Station (Wellington Street)
- William Street Supervised Rank (located between Roe and James Streets, supervised taxi rank Fri & Sat nights, 12am to 4am)
- James Street (near corner of Lake Street)
- Milligan Street (alongside Rosie O'Grady's towards Roe Street. Fri & Sat nights, 11pm to 5am only).

If you would like to have a taxi pre-ordered for you, please contact the Front of House Manager before or after the performance. For the most up to date information on the State Theatre Centre, go to:

[www.statetheatrecentrewa.com.au](http://www.statetheatrecentrewa.com.au) or [www.bsstc.com.au](http://www.bsstc.com.au).

## BLACK SWAN STATE THEATRE COMPANY

**PO Box 337  
Northbridge WA 6865**

**TELEPHONE:** (08) 6212 9300

**FAX:** (08) 6212 9318

**EMAIL:** information@bsstc.com.au

**WEB:** www.bsstc.com.au, Facebook  
or twitter @BlackSwanSTC

**FOUNDING PATRON:** Janet Holmes à Court AC

**PATRON:** Sally Burton

**CHAIR:** Sam Walsh AO

**DEPUTY CHAIRS:** Andrew Drayton & Kate O'Hara

**TREASURER:** Craig Yaxley

**DIRECTORS:** Dr Kenneth Chern,  
Alan Cransberg, Rob McKenzie,  
Vicki Robinson & Prof Alan Robson AM

**ARTISTIC DIRECTOR:** Kate Cherry

**GENERAL MANAGER:** Shane Colquhoun

**PRODUCTION MANAGER:** Garry Ferguson

**STAGE MANAGER:** Anna Dymitr Hawkes

**ARTISTIC COORDINATOR:** Chantelle Iemma

**WARDROBE MANAGER:** Lynn Ferguson

**FINANCE MANAGER:** Amanda Luke

**TICKETING & ADMINISTRATION  
OFFICER:** Sandi Buckley

**EDUCATION & COMMUNITY ACCESS  
MANAGER:** Alena Tompkins

**FUNDRAISING MANAGER:** Andree McIntyre

**MARKETING & SPONSORSHIP MANAGER:**  
Nancy Hackett

**MARKETING COORDINATOR:** Kerry Miller

**MARKETING ASSISTANT:** Shona Saxton

**PHOTOGRAPER:** Gary Marsh

**COVER IMAGE:** Robert Frith

**OVERSEAS REPRESENTATIVES:** *London:*  
Diana Franklin and Yolande Bird, *New  
York:* Stuart Thompson



The State Theatre Centre  
of WA is managed by AEG  
Ogden (Perth) Pty Ltd

**VENUE MANAGER FOR THE PERTH  
THEATRE TRUST VENUES:** Perth  
Theatre Trust

**CHAIRMAN:** Dr Saliba Sassine

**TRUSTEES:** Peter Alexander, Rob  
Butler, Helen Cook, Janet Davidson,  
Max Kay AM & Sandra Liu

**TRUSTEE/DIRECTOR GENERAL  
DEPARTMENT OF CULTURE AND  
THE ARTS:** Allanah Lucas

**GENERAL MANAGER:** Alan Ferris

## AEG OGDEN (PERTH) PTY LTD

**CHIEF EXECUTIVE:** Rodney M Phillips



STATE THEATRE CENTRE  
OF WESTERN AUSTRALIA

## STATE THEATRE CENTRE OF WESTERN AUSTRALIA

**GENERAL MANAGER:** Brendon Ellmer

**DEPUTY GENERAL MANAGER:**  
Alice Jorgensen

**TECHNICAL MANAGER:** Graham Piper

**OPERATIONS MANAGER:** Lorraine Rice

**HEAD FLYMAN:** Boyd Midgely

**ASSISTANT TECHNICAL MANAGER:** Ashley Page

**VENUE TECHNICIAN:** Chris Hastie

**ACCOUNTS AND ADMINISTRATION OFFICER:**  
Jessica McCallum

ipads, ipods, cameras and other recording devices are strictly forbidden. Patrons are requested to switch off mobile phones and watches with digital alarms prior to commencement of the performance. Latecomers may not be given access to the auditorium until there is a convenient break in the program. Food and drink is not to be consumed inside the auditorium, with exception of plastic bottled water. Smoking is not permitted.

### Change of Artist

Black Swan reserves the right to withdraw or substitute artists as necessary.

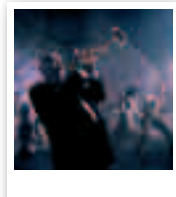
### Privacy Policy

Black Swan respects the privacy of individuals in accordance with the Privacy Act.





2011



## BOUNDARY STREET

**FEATURING** Adriane Daff, Rebecca Davis, Matt Dyktynski, Luke Hewitt, Christopher Kirby, Damon Lockwood, Clare Moss, Emma Pask, Kenneth Ransom, Gina Williams, Terry Yeboah

**DIRECTOR**  
Kate Cherry

**COMPOSER AND MUSICAL DIRECTOR**  
James Morrison

**SET DESIGNER**  
Michael Scott-Mitchell

**COSTUME DESIGNER**  
Teresa Negroponte

**LIGHTING DESIGNER**  
David Murray

**SOUND DESIGNER**  
Peter Dawson

**CHOREOGRAPHERS**  
Mary Beth Cavanaugh & Shane McCarthy

**FIGHT COORDINATOR**  
Andy Fraser

**ASSISTANT DIRECTOR**  
Luke Hewitt

**ASSISTANT SET DESIGNER**  
David Fleischer

**DRAMATURG**  
Hilary Bell

**BAND - SAX**  
Roger Garrood

**BAND - BASS**  
Harry Morrison

**BAND - DRUMS**  
John Morrison

**BAND - GUITAR**  
Raymond Walker

**ASSISTANT STAGE MANAGER**  
Jason Thelwell

**SUPERNUMERARY**  
Simon Stokes

**COSTUME TECHNICIANS**  
Mandy Elmitt & Penny Mazzuchelli

**WARDROBE ASSISTANT/DRESSER**  
Kristy Armstrong

**WARDROBE ASSISTANT**  
Laura Gray

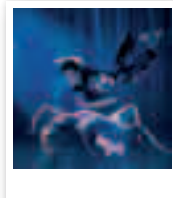
**HAIR/MAKE-UP CONSULTANT** Peta Hastings

**TECHNICAL COORDINATOR**  
Collin Best

**ARMORER**  
Dave Norton-Wood

**SET CONSTRUCTION**  
Artsworkshop

**WARDROBE SECONDMENT (WAAPA)**  
April Richards



## A MIDSUMMER NIGHT'S DREAM

**FEATURING** James Beck, Elizabeth Blackmore, Benj D'Addario, Adriane Daff, Arielle Gray, Stuart Halusz,

Brendan Hanson, Luke Hewitt, Natalie Holmwood, Michael Loney, Sam Longley, Kelton Pell, Myles Pollard, Kenneth Ransom, Scott Sheridan, Alison van Reeken, Shubhadra Young

**DIRECTOR**  
Kate Cherry

**SET DESIGNER**  
Christina Smith

**COSTUME DESIGNER**  
Alicia Clements

**LIGHTING DESIGNER**  
Graham Walne & Trent Suidgeest

**SOUND DESIGNER**  
Ash Gibson Greig

**MOVEMENT DIRECTOR**  
Lisa Scott-Murphy

**FIGHT COORDINATOR**  
Andy Fraser

**VOICE COACH**  
Julia Moody

**ASSISTANT DIRECTOR** Jeffrey Jay Fowler

**ASSISTANT SET DESIGNER**  
Fiona Bruce

**ASSISTANT STAGE MANAGERS**  
Rebecca Gibbs & Amy Suart

**CUTTER**  
Mandy Elmitt

**COSTUME TECHNICIANS**  
Cathryn Ashton, Alan Brown, Sue Kerr & Penny Mazzuchelli

**WARDROBE ASSISTANT**  
Kristy Armstrong

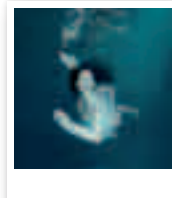
**DRESSER**  
Danni Miller

**MILLINER**  
Caitlin Ryan

**MAKE UP/HAIR CONSULTANT**  
Peta Hastings

**SET CONSTRUCTION**  
Artsworkshop

**WARDROBE SECONDMENTS**  
Sophie Mathers & Shelbe Shaw



## RISING WATER

**FEATURING**  
Kai Arbuckle, Callum Fletcher, Stuart Halusz, John Howard, Geoff Kelso, Claire Lovering, Alison Whyte

**DIRECTOR**  
Kate Cherry

**SET & COSTUME DESIGNER**  
Christina Smith

**LIGHTING DESIGNER**  
Matt Scott

**SOUND DESIGNER/COMPOSER**  
Iain Grandage

**MOVEMENT DIRECTOR**  
Lisa Scott-Murphy

**ASSOCIATE DIRECTOR**  
Stuart Halusz

**ASSISTANT SET & COSTUME DESIGNER**  
Fiona Bruce

**DRAMATURG**  
Polly Low

**ASSISTANT STAGE MANAGER**  
Karla Nessfield

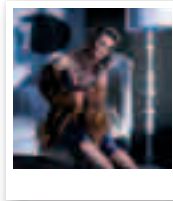
**COSTUME TECHNICIAN**  
Mandy Elmitt

**WARDROBE ASSISTANT**  
Danni Miller

**SET CONSTRUCTION**  
Artsworkshop

**PRODUCTION  
SECONDMENT**  
Erin Coubrough

**WARDROBE  
SECONDMENT**  
Sophie Mathers



## CAT ON A HOT TIN ROOF

**FEATURING**  
Caitlin Beresford-Ord, Carol Burns, Cheree Cassidy, Damon Lockwood, Daniel Murphy, Tom O'Sullivan, Hugh Parker, John Stanton & Gina Williams, Holly Barrett, Bailey Burgess, Daniel Mattock Collins, Max Collins, Alison Deal, Meg Emslie, Charlie Ramsay & Hannah Rutherford.

**DIRECTOR**  
Kate Cherry

**SET & COSTUME  
DESIGNER**  
Bruce McKinven

**LIGHTING DESIGNER**  
David Murray

**SOUND DESIGNER**  
Ben Collins

**DIALECT COACH**  
Melissa Agnew

**STAGE MANAGER**  
Jodie Roche

**ASSISTANT STAGE  
MANAGER**  
Genevieve Jones

**CHILDREN'S  
CHAPERONE**  
Whitney Richards

**MOVEMENT  
CONSULTANT**  
Scott Witt

**HAIR/WIG  
MAINTENANCE**  
Milli Landreord

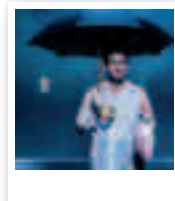
**WARDROBE DRESSER/  
MAINTENANCE**  
Sophie Mathers

**HEAD MECHANIC**  
Richard Aishford

**HEAD OF AUDIO**  
Tony Brumpton

**PRODUCTION  
ELECTRICIAN**  
Scott Klupfel

**TECHNICAL  
COORDINATORS**  
Collin Best,  
Daniel Maddison &  
Jason Thelwell



## WHEN THE RAIN STOPS FALLING

**FEATURING**  
Vivienne Garrett,  
Julia Moody, Fiona  
Pepper, Igor Sas,  
Scott Sheridan,  
Steve Turner,  
Alison van Reeken

**DIRECTOR**  
Adam Mitchell

**ASSISTANT DIRECTOR**  
Matt Longman

**SET & COSTUME  
DESIGNER**  
Bryan Woltjen

**LIGHTING DESIGNER**  
Trent Suidgeest

**SOUND DESIGNER**  
Ben Collins

**AUDIO VISUAL  
DESIGNER**  
Mia Holton

**MOVEMENT DIRECTOR**  
Claudia Alessi

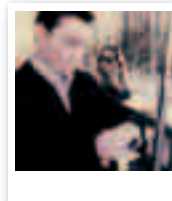
**ASSISTANT STAGE  
MANAGER**  
Louise Wardel

**HEAD CUTTER**  
Mandy Elmitt

**WARDROBE ASSISTANT  
& DRESSER**  
Danni Miller

**SET CONSTRUCTION**  
Artsworkshop

**ASSISTANT  
STAGE MANAGER  
SECONDMENT**  
Natasha Deacon



## STUDIO UNDERGROUND

**NINETY**  
**FEATURING**  
Paul English, Kirsty  
Hillhouse.

**DIRECTOR**  
Marcelle Schmitz

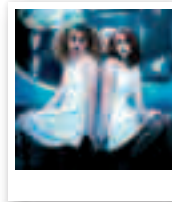
**SET & COSTUME  
DESIGNER**  
Bryan Woltjen

**LIGHTING DESIGNER**  
Trent Suidgeest

**SOUND DESIGNER**  
Ben Collins

**PRODUCTION  
ASSISTANT**  
Erin Coubrough

**SET CONSTRUCTION**  
Artsworkshop



## THE DAMNED

**FEATURING**  
Wade Briggs, Sage  
Douglas, Claire  
Lovering, Polly Low,  
Greg McNeill,  
Amanda Woodhams

**DIRECTOR**  
Andrew Lewis

**SET & COSTUME  
DESIGNER**  
Alicia Clements

**LIGHTING DESIGNER**  
Joseph Mercurio

**SOUND DESIGNER**  
James Luscombe

**AUDIO VISUAL  
DESIGNER**  
Mia Holton

**VOCAL COACH**  
Luzita Fereday

**STAGE MANAGER**  
Rebecca Gibbs

**ASSISTANT STAGE  
MANAGER**  
Whitney Richards

**SET CONSTRUCTION**  
Artsworkshop

**ASSISTANT DIRECTOR  
SECONDMENT**  
Tanya Mitford

## YOUNG WRITERS PROGRAM

**DIRECTOR**  
Adam Mitchell

Gita Bezard, Sandi  
Buckley, Nate  
Doherty, Alexander  
Fisher, Jeffrey Jay  
Fowler, Chris Isaacs,  
Daniel Kershaw,  
Steve McCall,  
Nathanial Moncrief,  
Jordan Nix, Jane  
Rait, Demelza  
Rogers

## PRODUCTION

**TECHNICAL**  
Colli Best &  
Jason Thelwell

**ELECTRICS**  
Erryn Hanson

**DRIVER**  
Kim Westbrook

**STAGING**  
Alex Giles

## ARTSWORKSHOP

Ian Parsons  
(Director), Rod  
Jones (Director), Les  
Hickford, Alison  
Little, Marek Szlyer

# BLACK SWAN STATE THEATRE COMPANY GRATEFULLY ACKNOWLEDGES THE SUPPORT OF OUR PARTNERS:

## Principal Partner

# RioTinto

## Government Partners



Black Swan State Theatre Company is assisted by the Australian Government through the Australia Council, its arts funding and advisory body.



Government of Western Australia  
Department of Culture and the Arts



## Staging Partner



## Cast Partner



**WorleyParsons**  
resources & energy

## Production Partners



BOUNDARY STREET



RISING WATER



CAT ON A HOT TIN ROOF

## Associate Partners



A MIDSUMMER NIGHT'S DREAM



WHEN THE RAIN STOPS FALLING



RISING WATER

## Associate and Touring Partner

## Season Partners



## Relocation Partner



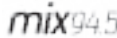
## Education Partner



## Research Partner



## Media Partner



## Technology Partner



## Print Media Partner



## Design Partner



## Online Partner



## Infrastructure Partner



## Legal Advisors



## Wine Partner



## Sparkling Wine Partner



## Beer Partner



## Hospitality Partner



No Healthy's Choice | Perth Concert Hall  
Sakoo Arts Centre | Swan Theatre Centre

## Foundation Partners



McCusker Charitable Foundation



*Coming of age in a new home*

As Black Swan State Theatre Company celebrates a new chapter in a new home, Rio Tinto is proud to be part of their future.

[www.ciwa.riotinto.com](http://www.ciwa.riotinto.com)

**RioTinto**



**black swan**  
STATE THEATRE COMPANY